

Annexure-1

(Referred to in paragraphs 1.2, 1.5 and 1.16)

Statement showing particulars of up to date paid-up capital, budgetary outgo, loans given out of budget and loans outstanding as on 31 March 2008 in respect of Government Companies and Statutory Corporations

(Figures in Column 3(a) to 4(f) are Rupees in lakh)

Sl. No.	Sector and name of the Public Sector Undertaking	Paid Up Capital as at the end of the Current Year					Equity/loans received out of Budget during the year		Other loans received during the year	Loans* outstanding at the close of 2007-08			Debt equity ratio for 2007-08 (Previous Year) 4(f)/3(e)	
		State Government	Central Government	Holding Companies	Others	Total	Equity	Loans		Government	Others	Total		
		(1)	(2)	3(a)	3(b)	3(c)	3(d)	3(e)	4(a)	4(b)	4(c)	4(d)	4(e)	4(f)
A. Working Government Companies														
AGRICULTURE AND ALLIED SECTORS														
1	Rajasthan Jal Vikas Nigam Limited	127.00	-	-	-	127.00	-	-	-	-	-	-	-	-
2	Rajasthan State Seeds Corporation Limited	633.00	103.93	-	21.20	758.13	-	-	-	-	-	-	-	-
Sector Wise Total		760.00	103.93		21.20	885.13	-	-		-	-	-		
INDUSTRIES SECTOR														
3	Rajasthan State Industrial Development and Investment Corporation Limited	20820.25	-	-	-	20820.25 (100)	250.00	-	-	740.62	1839.64	2580.26	0.12:1 (0.15:1)	
4	Rajasthan Small Industries Corporation Limited	514.39	27.00	-	5.01	546.40	-	-	-	115.66	-	115.66	0.21:1 (0.10:1)	
Sector Wise Total		21334.64	27.00		5.01	21366.65 (100)	250.00			856.28	1839.64	2695.92	-	
HANDLOOM AND HANDICRAFTS SECTOR														
5	Rajasthan State Handloom Development Corporation Limited	560.00	-	-	55.00	615.00	-	-	-	1619.18	86.06	1705.24	2.77:1 (2.63:1)	
Sector Wise Total		560.00	-	-	55.00	615.00	-	-	-	1619.18	86.06	1705.24		
MINING SECTOR														
6	Rajasthan State Mines and Minerals Limited	7754.15	-	-	1.00	7755.15	-	-	-	-	2050.59	2050.59	0.26:1 (0.37:1)	
7	Barmer Lignite Mining Company Limited (Subsidiary joint Company of Sr.A(6))			1020.00	980.00	2000.00	-		275.10	-	2597.75	2597.75	1.30:1	
Sector Wise Total		7754.15		1020.00	981.00	9755.15			275.10		4648.34	4648.34		

(1)	(2)	3(a)	3(b)	3(c)	3(d)	3(e)	4(a)	4(b)	4(c)	4(d)	4(e)	4(f)	5
CONSTRUCTION													
8	Rajasthan State Road Development and Construction Corporation Limited	1000.00	-	-	-	1000.00	-	-	-	-	2517.75	2517.75	2.52:1 (5.90:1)
9	Rajasthan Urban Infrastructure Finance and Development Corporation Limited	300.00	-	-	-	300.00	-	-	-	-	-	-	-
Sector Wise Total		1300.00				1300.00					2517.75	2517.75	
STATE EXCISE													
10	Rajasthan State Ganganagar Sugar Mills Limited	360.33	-	-	4.40	364.73	-	-	-	-	-	-	-
11	Rajasthan State Beverages Corporation Limited	200.00	-	-	-	200.00	-	-	-	-	-	-	-
Sector Wise Total		560.33			4.40	564.73							
TOURISM													
12	Rajasthan State Hotels Corporation Limited	162.22	-	-	-	162.22	16.00	-	-	10.00	-	10.00	0.06:1 (0.07:1)
13	Rajasthan Tourism Development Corporation Limited	1845.49	-	-	-	1845.49	-	-	-	-	1000.00	1000.00	0.54:1 (0.02:1)
Sector Wise Total		2007.71				2007.71	16.00			10.00	1000.00	1010.00	
POWER													
14	Rajasthan Renewable Energy Corporation Limited	1294.11	-	-	-	1294.11	-	-	-	-	9098.70	9098.70	7.03:1 (7.82:1)
15	Rajasthan Rajya Vidyut Utpadan Nigam Limited	311659.00	-	-	-	311659.00	65800.00	-	198849.51	13807.00	552525.43	566332.43	1.82:1 (1.35:1)
16	Rajasthan Rajya Vidyut Prasaran Nigam Limited	93900.00	-	-	-	93900.00	12500.00	-	49575.00	31349.00	247599.00	278948.00	2.97:1 (3.21:1)
17	Jaipur Vidyut Vitran Nigam Limited	47800.00	-	-	-	47800.00	8000.00	56353.44	48081.00	24147.50	234090.13	258237.63	5.40:1 (4.16:1)
18	Jodhpur Vidyut Vitran Nigam Limited	43800.00	-	-	-	43800.00	8000.00	4200.00	47639.38	41173.42	136723.02	177896.44	4.06:1 (3.88:1)
19	Ajmer Vidyut Vitran Nigam Limited	51550.00	-	-	-	51550.00	12000.00	6290.38	3000.00	47861.34	139148.85	187010.19	3.63:1 (3.22:1)
20	Chhabra Power Limited (Subsidiary of Sl. A (15))		-	5.00	-	5.00	-	-	-	-	-	-	-

(1)	(2)	3(a)	3(b)	3(c)	3(d)	3(e)	4(a)	4(b)	4(c)	4(d)	4(e)	4(f)	5
21	Giral Lignite Power Limited (Subsidiary of SI. A (15))		-	5.00	-	5.00	-	-	-	-	-	-	-
22	Dholpur Gas Power Limited (Subsidiary of SI. A (15))		-	5.00	-	5.00	-	-	-	-	-	-	-
	Sector Wise Total	550003.11		15.00		550018.11	106300.00	66843.82	347144.89	158338.26	1319185.13	1477523.39	
TRANSPORT AND CIVIL AVIATION													
23	Rajasthan Civil Aviation Corporation Limited	5.00	-	-	-	5.00	5.00	-	39.82	40.81	-	40.81	8.16:1
24	Jaipur City Transport Services Limited	15.00	-	-	-	15.00 (15.00)	-	-	-	-	-	-	-
25	Kota City Transport Services Limited	10.00	-	-	-	10.00	-	-	-	-	-	-	-
	Sector Wise Total	30.00	-	-	-	30.00 (15.00)	5.00	-	39.82	40.81	-	40.81	-
	Total-A Working Govt. Companies	584309.94	130.93	1035.00	1066.61	586542.48 (115.00)	106571.00	66843.82	347459.81	160864.53	1329276.92	1490141.45	
B. Working Statutory Corporations													
TRANSPORT													
1	Rajasthan State Road Transport Corporation	19323.5	2682.75	-	-	22006.25	-	-	-	-	14920.96	14920.96	0.68:1 (0.74:1)
	Sector Wise Total	19323.5	2682.75	-	-	22006.25	-	-	-	-	14920.96	14920.96	
FINANCING													
2	Rajasthan Financial Corporation	6370.60	-	-	2281.85	8652.45	500.00	-	-	3110.10	72215.38	75325.48	8.71:1 (8.97:1)
	Sector Wise Total	6370.60	-	-	2281.85	8652.45	500.00	-	-	3110.10	72215.38	75325.48	
AGRICULTURE AND ALLIED													
3	Rajasthan State Warehousing Corporation	392.63	-	-	392.63	785.26	-	-	-	-	-	-	-
	Sector Wise Total	392.63	-	-	392.63	785.26	-	-	-	-	-	-	-
	Total-B Working Statutory Corporations	26086.73	2682.75	-	2674.48	31443.96	500.00	-	-	3110.10	87136.34	90246.44	
	Grand Total (A+B)	610396.67	2813.68	1035.00	3741.09	617986.44 (115.00)	107071.00	66843.82	347459.81	163974.63	1416413.26	1580387.89	

C. Non Working Government Companies													
AGRICULTURE AND ALLIED SECTOR													
1	Rajasthan State Agro Industries Corp. Limited	600.73	-	-	-	600.73	-	-	-	39.42	200.00	239.42	0.40:1 (0.39:1)
2	Rajasthan State Dairy Development Corp. Limited	15.69	271.90	-	-	287.59	-	-	-	-	-	-	-
Sector Wise Total		616.42	271.90			888.32				39.42	200.00	239.42	
ENGINEERING SECTOR													
3	Hi-Tech Precision Glass Limited	7.60	-	-	0.05	7.65	-	-	-	11.08	-	11.08	1.45:1 (1.45:1)
Sector Wise Total		7.60	-	-	0.05	7.65	-	-	-	11.08	-	11.08	
ELECTRONIC SECTOR													
4	Rajasthan Electronics Limited (Subsidiary of Sl. A(3))	-	-	30.00	-	30.00	-	-	-	-	187.88	187.88	6.26:1 (6.26:1)
Sector Wise Total		-	-	30.00	-	30.00	-	-	-	-	187.88	187.88	
Grand Total		624.02	271.90	30.00	0.05	925.97				50.50	387.88	438.38	
Grand Total (A+B+C)		611020.69	3085.58	1065.00	3741.14	618912.41 (115.00)	107071.00	66843.82	347459.81	164025.13	1416801.14	1580826.27	

* Loans outstanding at the close of 2007-08 represent long-term loans only.

Note:- 1. Figures are provisional and as given by the Companies/Corporations.

2. State Government investments in working PSU's was Rs. 7743.71 crore (Others Rs. 14240.03 crore). Figures as per finance account 2007-08 are Rs. 8341.22 crore. The difference is under reconciliation.

3. Figures in brackets in column no. 5 are for previous year.

4. Figures in brackets in column no. 3(e) represents share application money.

Annexure-2

(Referred to in paragraphs 1.6, 1.7, 1.8, 1.13, 1.19 and 1.20)

Summarised Financial Results of Government Companies and Statutory Corporations for the latest year for which accounts were finalised

(Figures in column 7 to 12 and 15 are Rupees in lakh)

Sl. No	Sector and Name of the Public Sector Undertaking	Name of Department	Date of Incorporation	Period of Accounts	Year in Which Accounts Finalised	Net Profit(+)/ Net Loss(-)	Net Impact of Audit Comments	Paid Up Capital	Accumulated Profit(+)/Loss(-)	Capital Employed	Total Return on capital employed	Percentage of total return on capital employed	Arrears of accounts in term of years	Turnover	Man-Power
(1)	(2)	(3)	(4)	(5)	(6)	(7)	(8)	(9)	(10)	(11)	(12)	(13)	(14)	(15)	(16)
A. Working Government Companies															
AGRICULTURE AND ALLIED SECTOR															
1	Rajasthan Jal Vikas Nigam Limited	Ground Water Department	25 January 1984	2007-08	2008-09	(-6.87)	-	127.00	62.70	195.26	(-6.87)	-	-	419.63	36
2	Rajasthan State Seeds Corporation Limited	Agriculture	28 March 1978	2007-08	2008-09	814.05	Comments under finalisation	758.13	3293.89	4447.33	914.38	20.56	-	10245.70	240
Sector Wise Total						807.18		885.13	3356.59	4642.59	907.51			10665.33	276
INDUSTRIES SECTOR															
3	Rajasthan State Industrial Development & Investment Corporation Limited	Industries	28 March 1969	2007-08	2008-09	18157.58	Over statement of profit by Rs.8.71 crore	20820.25	14244.34	53515.92	18478.28	34.53	-	73700.70	NA
4	Rajasthan Small Industries Corporation Limited	Industries	3 June 1961	2007-08	2008-09	(-51.25)	-	546.40	(-51.25)	1487.79	(-28.06)	-	-	18807.48	302
Sector Wise Total						18106.33		21366.65	14193.09	55003.71	18450.22			92508.18	302
HANDLOOM AND HANDICRAFTS SECTOR															
5	Rajasthan State Handloom Development Corporation Limited	Industries	3 March 1984	2006-07	2007-08	(-250.87)	-	615	(-4501.14)	(-2185.31)	(-51.21)	-	1	858.04	NA
Sector Wise Total						(-250.87)		615	(-4501.14)	(-2185.31)	(-51.21)			858.04	
MINING SECTOR															
6	Rajasthan State Mines and Minerals Limited	Mines	07 May 1947 (Govt. Company since June 1973)	2007-08	2008-09	18344.54	Comments under finalisation	7755.15	46825.64	63502.76	18514.64	29.16	-	63641.22	1915
7	Barmer Lignite Mining Company Limited (Subsidiary joint Company of S.I.A(6))	Mines	19 January 2007	2007-08	2008-09	-	-	2000.00	-	4597.75	-	-	-	-	NA
Sector Wise Total						18344.54		9755.15	46825.64	68100.51	18514.64			63641.22	1915

Audit Report (Commercial) for the year ended 31 March 2008

(1)	(2)	(3)	(4)	(5)	(6)	(7)	(8)	(9)	(10)	(11)	(12)	(13)	(14)	(15)	(16)
CONSTRUCTION SECTOR															
8	Rajasthan State Road Development and Construction Corporation Limited	Construction	8 February 1979	2006-07	2007-08	82.20	-	1000	-	9204.09	311.90	3.39	1	2549.73	333
9	Rajasthan Urban Infrastructure Finance and Development Corporation Limited	Local self Government	1 December 2004	2006-07	2007-08	2.48	-	300	(-0.92)	290.71	2.48	0.85	1	9.28	NA
Sector Wise Total						84.68		1300	(-0.92)	9494.80	314.38			2559.01	333
STATE EXCISE SECTOR															
10	Rajasthan State Ganganagar Sugar Mills Ltd.	Finance	1 July 1956	2007-08	2008-09	196.52	-	364.73	0.60	1648.38	197.56	11.99	-	24771.04	NA
11	Rajasthan State Beverage Corporation Limited	Finance	24 February 2005	2007-08	2008-09	68.23	-	200	24.65	225.23	69.21	30.73	-	130272.38	NA
Sector Wise Total						264.75		564.73	25.25	1873.61	266.77			155043.42	
TOURISM SECTOR															
12	Rajasthan State Hotels Corporation Limited	Tourism	7 June 1965	2006-07	2007-08	10.48	-	146.22	(-265.72)	(-10.24)	15.98	-	1	235.54	81
13	Rajasthan Tourism Development Corporation Limited	Tourism	24 November 1978	2006-07	2007-08	82.76	Over statement of profit by Rs.11.85 crore	1845.49	(-5.39)	3745.78	85.25	2.28	1	4242.03	1215
Sector Wise Total						93.24		1991.71	(-271.11)	3735.54	101.23			4477.57	1296
POWER SECTOR															
14	Rajasthan Renewable Energy Corporation Ltd.	Energy	6 April 1995	2007-08	2008-09	1364.54	Comments under finalisation	1294.11	1733.32	14180.92	2387.29	16.83	-	2436.64	64
15	Rajasthan Rajya Vidyut Utpadan Nigam Ltd.	Energy	19 June 2000	2007-08	2008-09	-	NA*	311659.00	-	1012417.64	37423.68	3.70	-	387599.36	3298
16	Rajasthan Rajya Vidyut Prasaran Nigam Ltd.	Energy	19 June 2000	2007-08	2008-09	-	NA*	93900.00	-	455599.17	20313.25	4.46	-	87663.72	8392
17	Jaipur Vidyut Vitran Nigam Ltd.	Energy	19 June 2000	2007-08	2008-09	-	NA*	47800.00	-	632867.43	34080.43	5.39	-	320058.49	16964
18	Jodhpur Vidyut Vitran Nigam Ltd.	Energy	19 June 2000	2007-08	2008-09	-	NA*	43800.00	-	549404.51	31482.24	5.73	-	213926.16	10762
19	Ajmer Vidyut Vitran Nigam Ltd.	Energy	19 June 2000	2006-07	2007-08	-	NA*	39550.00	-	370416.65	24128.86	6.51	1	211189.29	12499
20	Chhabra Power Limited (Subsidiary of SI.A (15))	Energy	22 November 2006	2007-08	2008-09	-	-	5.00	-	2.55	-	-	-	-	NA
21	Giral Lignite Power Limited (Subsidiary of SI.A (15))	Energy	23 November 2006	2007-08	2008-09	-	-	5.00	-	2.56	-	-	-	-	NA
22	Dholpur Gas Power Limited (Subsidiary of SI.A (15))	Energy	22 November 2006	2007-08	2008-09	-	-	5.00	-	2.55	-	-	-	-	NA
Sector Wise Total						1364.54		538018.11	1733.32	3034893.98	149815.75			1222873.66	51979

(1)	(2)	(3)	(4)	(5)	(6)	(7)	(8)	(9)	(10)	(11)	(12)	(13)	(14)	(15)	(16)
TRANSPORT AND CIVIL AVIATION SECTOR															
23	Rajasthan Civil Aviation Corporation Limited	Tourism and Civil Aviation	20 December 2006	#	-	-	-	5.00	-	-	-	-	2	-	NA
24	Jaipur City Transport Services Limited	Local Self Government	6 February 2008	#	-	-	-	15.00	-	-	-	-	-	-	NA
25	Kota City Transport Services Limited	Local Self Government	22 December 2006	#	-	-	-	10.00	-	-	-	-	2	-	NA
Sector Wise Total								30.00							
Total-A Working Govt. Companies						38814.39		574526.48	61360.72	3175559.43	188319.29			1552626.43	56101
B. Working Statutory Corporations															
TRANSPORT SECTOR															
1	Rajasthan State Road Transport Corporation	Transport	1 October 1964	2006-07	2007-08	(-)1914.05	Loss understated by Rs.3.43 crore	22006.25	(-)39470.40	(-)353.76	(-)311.61	-	1	97850.21	21798
Sector Wise Total						(-)1914.05		22006.25	(-)39470.40	(-)353.76	(-)311.61	-		97850.21	21798
FINANCING SECTOR															
2	Rajasthan Financial Corporation	Industries	17 January 1955	2007-08	2008-09	549.43	Comments under finalisation	8652.45	(-)5394.92	83625.29	7093.72	8.48	-	11695.30	864
Sector Wise Total						549.43	-	8652.45	(-)5394.92	83625.29	7093.72			11695.30	864
AGRICULTURE AND ALLIED SECTOR															
3	Rajasthan State Warehousing Corporation	Agriculture	30 December 1957	2007-08	2008-09	625.00	-	785.26	-	7087.25	625.05	8.82	-	2272.80	489
Sector Wise Total						625.00	-	785.26	-	7087.25	625.05			2272.80	489
Total-B Working Statutory Corporations						(-)739.62		31443.96	(-)44865.32	90358.78	7407.16			111818.31	23151
Grand Total (A+B)						38074.77		605970.44	16495.40	3265918.21	195726.45			1664444.74	79252
C. Non Working Govt. Companies															
AGRICULTURE AND ALLIED SECTOR															
1	Rajasthan State Agro Industries Corporation Ltd.	Agriculture	1 August 1969	2006-07	2008-09	(-)130.22	-	600.73	(-)4352.14	(-)2271.58	(-)9.20	-	1	-	NA
2	Rajasthan State Dairy Development Corp. Ltd.	Dairy	31 March 1975	2007-08	2008-09	(-)0.26	-	287.59	(-)19.63	267.95	(-)0.26	-	-	-	NA
Sector Wise Total						(-)130.48		888.32	(-)4371.77	(-)2003.63	(-)9.46			-	-

(1)	(2)	(3)	(4)	(5)	(6)	(7)	(8)	(9)	(10)	(11)	(12)	(13)	(14)	(15)	(16)
ENGINEERING SECTOR															
3	Hi-Tech Precision Glass Ltd.	Finance	18 March 1963	2007-08	2008-09	0.02	-	7.65	(-)19.40	(-)0.47	0.98	-	-	-	NA
Sector Wise Total						0.02	-	7.65	(-)19.40	(-)0.47	0.98				
ELECTRONIC SECTOR															
4	Rajasthan Electronics Ltd.(Subsidiary of Sl. A(3))	Electronics	23 January 1985	2007-08	2008-09	(-)0.19	-	30.00	(-)305.85	(-)78.01	(-)0.19	-	-	-	NA
Sector Wise Total						(-)0.19	-	30.00	(-)305.85	(-)78.01	(-)0.19	-	-	-	
Total-C Non Working Government Companies						(-)130.65		925.97	(-)4697.02	(-)2082.11	(-)8.67				
Grand Total (A+B+C)						37944.12		606896.41	11798.38	3263836.10	195717.78			1664444.74	79252

A. Capital employed represents net fixed assets (including capital works-in-progress) plus working capital except in case of finance Companies/Corporations where the capital employed is worked out as a mean of aggregate of the opening and closing balances of paid-up-capital, free reserves, bonds, deposits and borrowings (including refinance).

* Not applicable as accounts of these Companies are prepared on no profit no loss basis as per financial restructuring plan.

First accounts have not been finalised.

Annexure-3

(Referred to in paragraph 1.5)

Statement showing subsidy received, guarantees received, waiver of dues, loans on which moratorium allowed and loans converted into equity during the year and subsidy receivable and guarantees outstanding at the end of March 2008

(Figures in column 3(a) to 7 are Rupees in lakh)

Sl. No.	Name of the Public Sector Undertaking	Subsidy received during the year				Guarantees received during the year and outstanding at the end of the year					Waiver of dues during the year				Loans on which moratorium allowed	Loans Converted into Equity during the Year
		Central Govt.	State Govt.	Others	Total	Cash credit from Banks	Loans from Other Sources	Letters of credit Opened by banks in respect of imports	Payment obligation under agreement with foreign consultant or contracts	Total	Loan Repayment written off	Interest Waived	Penal interest Waived	Total		
(1)	(2)	3(a)	3(b)	3(c)	3(d)	4(a)	4(b)	4(c)	4(d)	4(e)	5(a)	5(b)	5(c)	5(d)	(6)	(7)
A. Working Government Companies																
1	Rajasthan State Seeds Corporation Limited	222.57	2352.74	-	2575.31	-	-	-	-	-	-	-	-	-	-	-
2	Rajasthan State Industrial Development and Investment Corporation Limited	2117.26	220.00	-	2337.26	-	(1702.25)	-	-	(1702.25)	-	-	-	-	-	-
3	Rajasthan Small Industries Corporation Limited	3.75	121.78	-	125.53	-	-	-	-	-	-	-	-	-	-	-
4	Rajasthan Renewable Energy Corporation Limited	-	100.00	-	100.00	-	-	-	-	-	-	-	-	-	-	-
5	Rajasthan State Handloom Development Corporation Limited	-	59.99	-	59.99	-	-	-	-	-	-	-	-	-	-	-
6	Rajasthan Rajya Vidyut Utpadan Nigam Limited	-	0.93	-	0.93	-	143500.00 (406402.64)	-	-	143500.00 (406402.64)	-	-	-	-	-	-
7	Rajasthan Rajya Vidyut Prasaran Nigam Limited	-	373.77	-	373.77	-	294555.07 (275865.25)	-	-	294555.07 (275865.25)	-	-	-	-	-	-

Audit Report (Commercial) for the year ended 31 March 2008

(1)	(2)	3(a)	3(b)	3(c)	3(d)	4(a)	4(b)	4(c)	4(d)	4(e)	5(a)	5(b)	5(c)	5(d)	(6)	(7)
8	Jaipur Vidyut Vitran Nigam Limited	-	45275.84	-	45275.84	-	285438.74 (384482.38)	-	-	285438.74 (384482.38)	-	-	-	-	4000.00	-
9	Jodhpur Vidyut Vitran Nigam Limited	-	37484.44	-	37484.44	-	203121.66 (338990.74)	-	-	203121.66 (338990.74)	-	-	-	-	-	-
10	Ajmer Vidyut Vitran Nigam Limited	-	65702.10	-	65702.10	-	343915.47 (394122.50)	-	-	343915.47 (394122.50)	-	-	-	-	-	-
	Total – A	2343.58	151691.59	-	154035.17	-	1270530.94 (1801565.76)	-	-	1270530.94 (1801565.76)	-	-	-	-	4000.00	0.00
B. Working Statutory Corporations																
1	Rajasthan Financial Corporation	-	-	-	-	-	- (13817.50)	-	-	- (13817.50)	-	-	-	-	-	-
	Total B	0.00	0.00	0.00	0.00	0.00	- (13817.50)	0.00	0.00	- (13817.50)	0.00	0.00	0.00	0.00	0.00	0.00
	Grand Total (A+B)	2343.58	151691.59	-	154035.17	0.00	1270530.94 (1815383.26)	0.00	0.00	1270530.94 (1815383.26)	0.00	0.00	0.00	0.00	4000.00	0.00

Note 1. Figures in brackets indicate guarantees outstanding at the end of the year.

2. Figures are provisional and as given by the Companies.

Annexure-4
(Referred to in paragraph 1.7)
Statement showing financial position of Statutory Corporations

Working Statutory corporations				
(Amount: Rupees in crore)				
Sl. No.	Particulars	2005-06	2006-07	2007-08 (Provisional)
1	Rajasthan State Road Transport Corporation			
A.	<u>Liabilities</u>			
	Capital (including capital loan and equity capital)	220.06	220.06	220.06
	Borrowings:			
	(Government)	-	-	-
	(Others)	173.44	163.67	149.21
	Funds *	4.89	4.99	5.03
	Trade dues and other current liabilities (including provisions)	295.45	301.26	299.89
	Total A	693.84	689.98	674.19
B.	<u>Assets</u>			
	Gross Block	472.23	492.51	480.92
	Less: Depreciation	241.82	267.89	285.65
	Net fixed assets	230.41	224.62	195.27
	Capital works-in-progress (including cost of chassis)	1.49	1.23	0.17
	Investment	0.32	6.55	0.49
	Current assets, loans and advances	86.06	62.88	60.13
	Accumulated losses	375.56	394.70	418.13
	Total B	693.84	689.98	674.19
C.	Capital employed**	30.01	(-)3.54	33.82

* Excluding depreciation funds.

** Capital employed represents net fixed assets (including works-in-progress) plus working capital.

(Amount: Rupees in crore)				
Sl. No.	Particulars	2005-06	2006-07	2007-08 (Provisional)
2	Rajasthan Financial Corporation			
A.	<u>Liabilities</u>			
	Paid-up-capital	81.52	81.52	86.52
	Share application money	-	-	-
	Reserve fund and other reserves and surplus	51.15	54.65	58.70
	Borrowings:			
	(i) Bonds and debentures	210.53	157.18	138.18
	(ii) Fixed deposits	-	-	-
	(iii) Industrial Development Bank of India and Small Industries Development Bank of India	454.32	466.26	496.13
	(iv) Reserve Bank of India	-	-	-
	(v) Loan towards Share capital:			
	(a) State Government	13.95	13.95	13.95
	(b) Industrial Development Bank of India	9.60	9.60	9.60
	(vi) Others (including State Government)	64.65	104.17	95.41
	Other liabilities and provisions	209.58	219.55	234.90
	Total A	1095.30	1106.88	1133.39
B.	<u>Assets</u>			
	Cash and Bank balances	47.35	45.46	74.85
	Investment	0.06	1.06	1.06
	Loans and advances	906.50	929.61	929.83
	Net fixed assets	4.09	3.48	3.47
	Other assets	47.55	44.56	42.96
	Miscellaneous expenditure	89.75	82.71	81.22
	Total B	1095.30	1106.88	1133.39
C.	Capital employed[@]	829.19	833.62	836.25

[@] Capital employed represents the mean of the aggregate of opening and closing balances of paid-up capital, loans in lieu of capital, seed money, debentures, reserves (other than those which have been funded specifically and backed by investment outside), bonds deposits and borrowings (including refinance). The free reserves and surplus have been reduced to the extent of debit balance of profit and loss account.

(Amount: Rupees in crore)				
Sl. No.	Particulars	2005-06	2006-07	2007-08 (Provisional)
3	Rajasthan State Warehousing Corporation			
A.	<u>Liabilities</u>			
	Paid-up-capital	7.85	7.85	7.85
	Reserves and Surplus	85.43	95.01	60.45
	Borrowings:			
	(Government)	-	-	-
	(Others)	-	-	-
	Trade dues and other current liabilities (including provisions)	14.14	27.66	68.40
	Total A	107.42	130.52	136.70
B.	<u>Assets</u>			
	Gross Block	63.01	67.79	75.41
	Less: Depreciation	22.54	24.67	27.06
	Net fixed assets	40.47	43.12	48.35
	Capital works-in-progress	1.47	3.78	1.14
	Current assets, loans and advances	65.48	83.62	87.21
	Profit and loss account	-	-	-
	Total B	107.42	130.52	136.70
C.	Capital employed[@]	93.28	108.83	70.87

[@] Capital employed represents net fixed assets (including works-in-progress) plus working capital (excluding provision for gratuity Rs. 96.70 lakh for 2007-08).

Annexure-5
(Referred to in paragraph 1.7)
Statement showing working results of Statutory Corporations

Working Statutory corporations				
(Amount: Rupees in crore)				
Sl. No.	Particulars	2005-06	2006-07	2007-08 (Provisional)
1	<u>Rajasthan State Road Transport Corporation</u>			
(1)	Operating:			
(a)	Revenue	851.40	944.34	975.09
(b)	Expenditure	904.26	996.81	1025.90
(c)	Surplus(+)/deficit(-)	(-52.86)	(-52.47)	(-50.81)
(2)	Non-operating:			
(a)	Revenue	25.35	34.16	27.04
(b)	Expenditure*	2.57	0.83	0.35
(c)	Surplus(+)/deficit(-)	22.78	33.33	26.69
(3)	Total:			
(a)	Revenue	876.75	978.50	1002.13
(b)	Expenditure	906.83	997.64	1025.55
(c)	Net Profit(+)/loss(-)	(-30.08)	(-19.14)	(-23.42)
(4)	Interest on Capital and loans	13.64	16.02	17.26
(5)	Total return on capital employed	(-16.43)	(-3.12)	(-6.16)

* In the accounts of RSRTC operating and non-operating expenditure is not shown separately. Hence only prior period adjustments have been shown under non-operating expenditure.

(Amount: Rupees in crore)				
Sl. No.	Particulars	2005-06	2006-07	2007-08 (Provisional)
2	Rajasthan Financial Corporation			
(1)	Income:			
(a)	Interest on loans	168.23	200.28	103.06
(b)	Other Income	8.36	10.08	8.23
	Total Income	176.59	210.36	111.29
(2)	Expenses:			
(a)	Interest on long term loans	70.44	70.22	65.34
(b)	Other expenses	94.7	128.90	34.36
	Total Expenditure	165.14	199.12	99.70
(3)	Profit before tax	11.45	11.24	11.59
(4)	Provision for tax	0.50	0.10	0.10
(5)	Other appropriations	0.6	0.6	6.00
(6)	Amount available for dividend [@]	10.35	10.54	5.49
(7)	Dividend	-	-	-
(8)	Total return on capital employed	81.29	80.75	70.94
(9)	Percentage of return on capital employed	9.80	9.69	8.48

[@] Represents profit of current year available for dividend after considering the specific reserves and provisions for taxation.

(Amount: Rupees in crore)				
Sl. No.	Particulars	2005-06	2006-07	2007-08 (Provisional)
3	Rajasthan State Warehousing Corporation			
(1)	Income:			
(a)	Warehousing charges	45.24	43.87	22.73
(b)	Other income	3.19	4.32	4.92
	Total Income	48.43	48.19	27.65
(2)	Expenses:			
(a)	Establishment charges	8.78	14.28	14.54
(b)	Other expenses	11.94	11.58	6.59
	Total Expenditure	20.72	25.86	21.13
(3)	Profit(+)/loss(-) before tax (1-2)	27.71	22.33	6.52
(4)	Other appropriations	7.30	11.14	4.22
(5)	Amount available for dividend	2.75	1.96	0.79
(6)	Dividend for the year	2.75	1.96	0.79
(7)	Total return on capital employed	27.51	21.88	6.25
(8)	Percentage of return on capital employed	29.49	20.11	8.82

Annexure-6
(Referred to in paragraph 1.12)
Statement showing Operational Performance of Statutory Corporations

Working Statutory Corporations				
1. Rajasthan State Road Transport Corporation				
Sl. No.	Particulars	2005-06	2006-07	2007-08 (Provisional)
1	Average number of vehicles held	4373	4389	4306
2	Average number of vehicles on road	4207	4237	4135
3	Percentage of utilisation of vehicles	96	97	96
4	Number of employees	22369	21798	20961
5	Employee vehicle ratio	5.12:1	4.97:1	4.86:1
6	Number of routes operated at the end of the year	2780	2715	2537
7	Routes kilometres	515457	520463	504110
8	Kilometres operated (in lakh)			
(a)	Gross	5793.62	6029.68	6010.08
(b)	Effective	5629.74	5870.47	5842.44
(c)	Dead	163.88	159.21	167.64
9	Percentage of dead kilometres to gross kilometres	2.83	2.64	2.79
10	Average kilometres covered per bus per day	367	380	387
11	Average operating revenue per kilometre	1394	1507	1605
12	Average operating revenue per kilometre (paise) over previous year's income (<i>per cent</i>)	6.74	8.11	6.50
13	Average expenditure per kilometre (paise)	1492	1601	1712
14	Increase in operating expenditure per kilometre over previous year's expenditure (<i>per cent</i>)	4.40	7.31	6.93
15	Loss per kilometre (paise)	(-)0.98	(-)0.94	(-)1.07
16	Number of operating depots	48	49	48
17	Average number of break down per lakh kilometers	1	1	1
18	Average number of accidents per lakh kilometres	0.11	0.11	0.11
19	Passenger kilometres operated (in crore)	2079.71	2122.45	2165.49
20	Occupy ratio	67.40	70.10	72.00
21	Kilometres obtained per litre of:			
(a)	Diesel oil	5.09	5.00	4.97
(b)	Engine oil	3208	3496	3408

2. Rajasthan Financial Corporation							
(Rupees in crore)							
Sl. No.	Particulars	2005-06		2006-07		2007-08	
		Number	Amount	Number	Amount	Number	Amount
1	Applications pending at the beginning of the year	23	21.45	53	54.23	63	105.65
2	Applications received	1404	667.30	1592	1308.75	1381	987.05
3	Total	1427	688.75	1645	1362.98	1444	1092.70
4	Applications sanctioned	771	344.27	729	368.44	856	438.21
5	Applications cancelled/ withdrawn/ rejected/reduced	603	290.25	853	888.89	533	538.54
6	Applications pending at the end of the year	53	54.23	63	105.65	55	115.95
7	Loans disbursed	647	265.94	723	261.53	726	266.92
8	Loans outstanding at the close of the year	-	906.50	-	929.61	-	929.83
9	Amount overdue for recovery at the close of the year						
	(a) Principal	-	44.82	-	33.15	-	31.63
	(b) Interest	-	155.63	-	143.39	-	138.68
	Total	-	200.45	-	176.54	-	170.31
10	Amount involved in recovery certificate cases	NA	NA	NA	NA		-
11	Percentage of default to total loans outstanding	-	12.81	-	NA		-

3. Rajasthan State Warehousing Corporation				
Sl. No.	Particulars	2005-06	2006-07	2007-08 (Provisional)
1	Number of stations covered	91	90	89
2	Storage capacity created up to the end of year (tonne in lakh)			
(a)	Owned	6.88	7.21	7.44
(b)	Hired	4.77	1.38	0.20
	Total	11.65	8.59	7.64
3	Average capacity utilised during the year (tonne in lakh)	11.66	11.64	7.92
4	Percentage of utilisation	102	93	62
5	Average revenue per metric tonne per year (Rupees)	409	443	560
6	Average expenses per metric tonne per year (Rupees)	175	238	428

Annexure-7
(Referred to in paragraph 1.27)
Statement showing comments/recommendations of Statutory Auditors on
Internal Audit System

Sl. No.	Name of Company/Statutory Corporation	Recommendations/major comments by the Statutory Auditors on "Internal Audit" in the supplementary reports u/s 619(3) (a) of the Companies Act, 1956
A	Government Companies	
1	Rajasthan Jal Vikas Nigam Limited	The Company is not having any Internal Audit System.
2	Rajasthan State Seeds Corporation Limited	Internal Audit has been carried out by the independent firm of Chartered Accountants which commensurate with the size of the Company and nature of its business, However, it needs further improvement.
3	Rajasthan State Industrial Development and Investment Corporation Limited	The internal audit for infrastructure activity has been carried out by the outside agencies, however, the same is not functioning effectively in some units mainly due to non-adherence with the scope of reporting and non-compliance with the system/circulars/rules issued by the Company.
4	Rajasthan Small Industries Corporation Limited	The Company's Internal Audit system is grossly deficient looking to the size and nature of its business. No Internal Audit has been done during the year.
5	Rajasthan State Handloom Development Corporation Limited	No Internal Audit System existed during the year 2006-07.
6	Rajasthan State Mines and Mineral Limited	The Company has an Internal Audit system commensurate with its size and nature of its business. However, the system of Internal Audit needs to be strengthened in terms of its scope, timely completion and prompt remedial action.
7	Rajasthan State Road Development and Construction Corporation Limited	The Company's internal audit system is grossly deficient looking to the size and nature of its business. The scope of work given to Internal Auditor and its follow up needs to be strengthened.
8	Rajasthan State Ganganagar Sugar Mills Limited	The Company has an Internal Audit system commensurate with its size and nature of its business, however, it requires improvement particularly with regard to scope of area to be covered, frequency and submission of reports.
9	Rajasthan State Hotels Corporation Limited	The Internal Audit has been carried out by the outside agency after the close of the year. The present system of Internal Audit does not commensurate with the size and nature of the business of the Company.
10	Rajasthan Raja Vidyut Utpadan Nigam Limited	The area of the Internal Audit System should be increased to make it more effective.
11	Rajasthan Raja Vidyut Prasaran Nigam Limited	The Company has made arrangements regarding internal audit of most of its units but keeping in view the size and nature of its business, internal audit system of the Company still needs to be strengthened.
12	Jaipur Vidyut Vitran Nigam Limited	The Company has its own internal audit department for conducting Internal Audit. The Internal Audit System is not commensurate with the size of the Company and nature of its business and needs to be further strengthened.
13	Jodhpur Vidyut Vitran Nigam Limited	The Company has in-house Internal Audit Wing to carry out internal audit, however, Internal audit is not adequate/commensurate with the size of the Company and nature of its business.
B	Statutory Corporations	
1.	Rajasthan Financial Corporation	The Corporation is having a system of Internal Audit, however, the same needs further strengthening so as to be commensurate with the nature and size of the business and to be more effective.
2.	Rajasthan State Warehousing Corporation	Internal Audit System is not commensurate with the size of the business and nature of activity of the Corporation.

Annexure-8
(Referred to in paragraphs 1.6 and 1.19)
Statement showing investments made by State Government in PSUs accounts of which are in arrears

(Rs. in lakh)

S. No.	Name of PSU	Year upto which accounts finalised	Paid up capital as per latest accounts finalised	Investment made by State Government during the year 2007-08 for which accounts are in arrears			
				Equity	Loans	Subsidy	Others to be specified
Working Companies							
1.	Rajasthan State Handloom Development Corporation Limited	2006-07	615.00	-	39.07	59.99	
2.	Rajasthan State Hotels Corporation Limited	2006-07	146.22	16.00	-	-	
3.	Ajmer Vidyut Vitran Nigam Limited	2006-07	39550.00	12000.00	11830.91	65702.10	
4.	Rajasthan Civil Aviation Corporation Limited (Date of incorporation 20 December 2006)	Ist accounts have not been finalised	5.00	5.00			
5.	Kota City Transport Corporation Limited (Date of incorporation 22 December 2006)	- do -	10.00	10.00	-	-	
		Total	40326.22	12031.00	11869.98	65762.09	
Non-working Companies							
1.	Rajasthan State Agro Industries Corporation Limited	2006-07	600.73	-	6.02	-	-
		Total	600.73	-	6.02	-	-

ANNEXURE -9
(Referred to paragraphs 2.1.13 and 2.1.25)
STATEMENT SHOWING THE GOALS AND ACHIEVEMENTS OF ELECTRIFICATION OF VILLAGES, DHANIS AND RURAL HOUSE HOLDS

Particulars	As per census 2001	Electrified upto 31 March 2005 i.e. before commencement of RGGVY	Balance Electrification to be covered under RGGVY/other schemes (as on 1 April 2005)	Goals (per cent)	Planned to goal (per cent)	Sanctioned to planned (per cent)	Achievement to sanctioned (per cent)	Cumulative achievement to census 2001 as of March 2008 (per cent)	Sanctioned to balance electrification (per cent)
Villages*	14131	12171	1420 [@]	1420 (100)	1420 (100)	363 (25.56)	363 (100)	12534 (88.70)	25.56
Dhanis*	27142	13339	13803	13803 (100)	2406 (17.43)	1706 (70.91)	961 (56.33)	14300 (52.69)	12.36
BPL RHHs*	923657	106829	816828	816828 (100)	816828 (100)	284901 (34.88)	99528 (34.93)	206357 (22.34)	34.88
APL RHHs	1748632	1062312	686320	686320 (100)	111197 (16.20)	88408 (79.51)	49803 (56.33)	1112115 (63.60)	12.88
TOTAL RHHs*	2672289	1169141	1503148	1503148 (100)	928025 (61.74)	373309 (40.23)	149331 (40.00)	1318472 (49.34)	24.84

* Villages/dhanis were to be electrified by March 2007 and Access of electricity to all RHHs to be provided by March 2009 as per RGGVY and REP.

@ Excluding 194 villages to be electrified by RREC and 346 villages were unpopulated.

Source: Records of Superintending Engineer (Plan), Ajmer Discom.

ANNEXURE -10
(Referred to paragraph 2.1.17)
STATEMENT SHOWING THE FUNDS POSITION OF AVVNL

(Rupees in crore)

Year	Loan amount		Capital grant/subsidy			Total amount	
	RGVY	FRP	KJP	AREP	RGVY	Loan	Subsidy
2003-04	--	--	0.46	--	--	--	0.46
2004-05	0.09*	--	1.94	0.85	--	0.09	2.79
2005-06	--	174.41	0.33	--	--	174.41	0.33
2006-07	2.84	49.37	--	--	48.91	52.21	48.91
2007-08	5.68	398.65	--	--	47.76	404.33	47.76
Total	8.61	622.43	2.73	0.85	96.67	631.04	100.25

* Related to AREP

Source: Records from Accounts/Finance wing of Ajmer Discom

ANNEXURE-11

(Referred to paragraph 2.1.40)

STATEMENT SHOWING THE EXTRA EXPENDITURE DUE TO NON-OBSERVATION OF REASONABILITY OF PRICES

(Amount in Rs.)

SI No	Name of the item	Material cost / TN 102		Material cost / TN 104			Material cost / TN: 105			Material cost / TN: 107			Material cost / TN: 108		
		Quantity	Ex-works Rate	Quantity	Ex-works	Difference 102-104	Quantity	Ex-works	Difference 105-104	Quantity	Ex-works	Difference 107-104	Quantity	Ex-works	Difference 108-104
1	2	3	4	5	6	7 (4-6x3)	8	9	10(9-6x8)	11	12	13(12-6x11)	14	15	16 (15-6x14)
1(a)	Pcc pole-9 mtrs	802	2510.81	1201	2289.20	177731.22	886	2292.90	3278.20	804	2454.80	133142.40	458	2410	55326.40
(b)	Pcc pole 8 mtrs	25341	1490.99	18062	1359.39	3334875.60	25817	1361.59	56797.40	15114	1457.72	1486159.62	10928	1431.12	783865.44
2	11kv top hamper	14428	152.53	11235	139.07	194200.88	5972	139.30	1373.56	7139	149.13	71818.34	3243	146.40	23771.19
	clamp	14428	49.60	11235	45.22	63194.64	5972	45.30	477.76	7139	48.49	23344.53	3243	47.61	7750.77
	Nuts & bolts	14428	17.09	11235	15.59	21642	5972	15.61	119.44	7139	16.71	7995.68	3243	16.40	2626.83
3	11kv pin insulator	14428	41.24	11235	37.61	52373.64	5972	37.66	298.60	9417	40.32	25520.07	3243	39.59	6421.14
	Pins	14428	80.38	11235	73.29	102294.52	5972	73.41	716.64	9417	78.58	49815.93	3243	77.16	12550.41
4	Disc Insulator	6060	275.86	4720	251.50	147621.60	2508	251.92	1053.36	3204	269.71	58344.84	1362	264.78	18087.36
	Hardware of T & C	6060	150.48	4720	137.19	80537.40	2508	137.41	551.76	3204	147.12	31815.72	1362	144.44	9874.50
5	LT-Pin insulator	14428	8.13	11235	7.41	10388.16	5972	7.42	59.72	6684	7.93	3475.68	3243	7.81	1297.20
	pins	14428	31.28	11235	28.52	39821.28	5972	28.58	358.32	6684	30.59	13835.88	3243	30.03	4896.93
6	Shackle insulators	6060	8.08	4720	7.36	4363.20	2508	7.36	0	2520	7.88	1310.40	1362	7.75	531.18
	Hardware of shackle insu	6060	47.80	4720	43.58	25573.20	2508	43.65	175.56	2520	46.73	7938	1362	45.87	3118.98
7	Stay set	21300	629.83	16012	574.24	1184067	17154	575.17	15953.22	11085	615.79	460581.75	7680	604.55	232780.80
	Guy insulator	21300	10.60	16012	9.66	20022	17154	9.68	343.08	11085	10.36	7759.50	7680	10.17	3916.80
	Stay wire	21300	296.71	16012	270.52	557847	17154	270.96	7547.76	11085	290.09	216933.45	7680	284.80	109670.40
	stay clamps	21300	85.01	16012	77.50	159963	17154	77.62	2058.48	11085	83.11	62186.85	7680	81.59	31411.20
	Nuts & bolts	21300	25.64	16012	23.39	47925	17154	23.42	514.62	11085	25.07	18622.80	7680	24.62	9446.40
8	ACSR Weasel Conductor	2100	21320.95	1636	19439.07	3951948	870	19522.80	72862.50	1000	20845.28	1406210	473	20464.90	485217.59

9	MS channel-structure	729	2201.85	1124	2007.50	141681.15	805	2010.75	2616.25	731	2152.73	106163.13	416	2113.44	44071.04
	Nuts & bolts	729	113.97	1124	103.91	7333.74	805	104.09	144.90	731	111.42	5489.81	416	109.41	2288
10	16 kva distribution transformer	729	33348.36	1124	31316.64	1481123.88	805	31367.20	40724.95	731	33582.06	1656022.02	416	32969.27	687494.08
11	11kv single phase switch fuse unit	729	5828.56	1124	5314.11	375034.05	805	5322.69	6906.90	731	5698.52	281003.71	416	5594.54	116658.88
12	XLPE Rabit conductor	10	65407.39	8	59794.81	56125.80	4.18	59891	402.0324	10	63948.18	41533.70	2.25	62781.26	6719.5125
13	PG Clamps	12120	67.05	9438	61.13	71750.40	5016	61.24	551.76	5040	65.56	22327.20	2724	64.36	8798.52
14	ABC-1c*25*25sq m	450	39333.83	302	35862.08	1562287.50	780.02	35920	45139.757	343	38456.31	889820.89	307	37754.57	580994.43
	suspension clamps	10350	280.11	6948	255.38	255955.50	17941	255.80	7535.22	7887	273.85	145672.89	7047	268.86	94993.56
	dead end clamps	4140	295.01	2316	268.96	107847	7177	269.39	3086.11	3155	288.43	61427.85	2819	283.15	40001.61
	LT insulation connector	4140	88.64	2316	80.83	32333.40	7177	80.96	933.01	3155	86.67	18425.20	2819	85.09	12008.94
	LT connectors	99056	67.05	222546	61.13	586411.52	62446	61.23	6244.60	47340	65.55	209242.80	39394	64.36	127242.62
15	Earthing set	729	1695.09	1124	1545.48	109065.69	805	1547.98	2012.50	731	1657.28	81725.80	416	1627.03	33924.80
	GI Wire	729	201.48	1124	183.70	12961.62	805	184	241.50	731	196.99	9714.99	416	193.39	4031.04
	Nuts & bolts	729	54.69	1124	49.87	3513.78	805	49.94	56.35	731	53.48	2638.91	416	52.50	1094.08
16	2c*2.5sqm almn. cable	1238	28491.41	2782	26046.58	3026699.54	936.69	26088.50	39266.045	711	27855.79	1286348.31	590	27347.47	767525.10
17	Energy meters	49528	499.01	111273	455.04	2177746.16	31223	455.77	22792.79	23670	487.97	779453.10	19697	479.06	473121.94
18	Angle	49528	317.14	111273	289.15	1386288.72	31223	289.62	14674.81	23670	310.08	495413.10	19697	304.41	300576.22
	Nuts & bolts	49528	39.90	111273	36.38	174338.56	31223	36.44	1873.38	23670	39.01	62252.10	19697	38.30	37818.24
19	Fabricated steel item	4.3	51135.47	8	46747.55	18868.056	3.43	46822.60	257.4901	20	49994.66	64942.20	1.50	49082.37	3502.23
20	MS nut bolts	1	56989.36	1.50	51959.23	5030.13	0.80	52046	69.416	1	55717.94	3758.71	0.50	54701.23	1371

21	11 kv earthing set	3030	565	2360	515.16	151015.20	1254	516	1053.36	1260	552.43	46960.20	681	542.35	18516.39
	GI Wire 8 SWG	3030	67.16	2360	61.23	17967.90	1254	61.34	137.94	1260	65.64	5556.60	681	64.47	2206.44
	Nuts & bolts	3030	18.23	2360	16.63	4848	1254	16.64	12.54	1260	17.83	1512	681	17.50	592.47
22	8 SWG GI Wire (4mm)	1040	5044.62	810	4599.36	463070.40	430.54	4606.80	3203.2176	433	4932.07	144063.43	234	4842.08	56796.48
23	LT cross arms-600 mm	14428	153.92	11235	140.33	196076.52	5972	140.56	1373.56	7975	150.49	81026	3243	147.74	24030.63
	clamo	14428	49.60	11235	45.22	63194.64	5972	45.30	477.76	7975	48.349	24953.775	3243	47.61	7750.77
	Nuts & bolts	14428	17.10	11235	15.59	21786.28	5972	15.62	179.16	7975	16.71	8932	3243	16.40	2626.83
24	11 kv bracket for dead end	802	919.38	1202	838.24	65074.28	886	839.60	1204.96	805	898.87	48807.15	458	882.47	20257.34
	Nuts & bolts	802	113.96	1202	103.91	8060.10	886	104.07	141.76	805	111.43	6053.60	458	109.38	2505.26
25	11kv bracket for T-OFF1*1.4m	505	459.68	394	419.12	20482.80	209	419.79	140.03	210	449.43	6365.10	114	441.24	2521.68
	Clamps	505	49.60	394	45.22	2211.90	209	45.30	16.72	210	48.49	686.70	114	47.61	272.46
	Nuts & bolts	505	17.10	394	15.59	762.55	209	15.61	4.18	210	16.71	235.20	114	16.40	92.34
26	Guard bracket-MS angle	1010	1067.71	786	973.47	95182.40	418	975.05	660.44	420	1043.89	29576.40	227	1024.84	11660.99
	clamp	1010	99.20	786	90.44	8847.60	418	90.59	62.70	420	96.98	2746.80	227	95.22	1085.06
	GI Wire	1010	343.04	786	312.76	30582.80	418	313.26	209	420	335.37	9496.20	227	329.26	3745.50
	Eye Bolts	1010	113.96	786	104.18	9877.80	418	104.34	66.88	420	111.43	3045	227	109.39	1182.67
	MS Nuts & bolts	1010	34.18	786	31.25	2959.30	418	31.30	20.90	420	33.42	911.40	227	32.82	356.39
	Total					22930786.00			369034.86			10731115.42			5302997.10
Total of (7+10+13+16): Rs.39333933															

Source: Turnkey work orders and Letter of intents

ANNEXURE -12

(Referred to in paragraph 2.1.41)

STATEMENT SHOWING THE DETAILS OF NON LEVY OF PENALTY

(Rupees in crore)

Name of the District/ scheme	Name of the Contractor	TN/ Order Date	Work commencement Date	Schedule Completion Date	Value of contract	Value of work actually completed up to March 2008	Delayed period up to March 2008	Amount of penalty @ 5%
Jhunjhunu	M/sAngelique International Limited	108/28.06.06	04.09.06	04.09.07	12.76	7.58	27 weeks	0.64
Sikar	M/sAngelique International Limited	107/28.06.06	04.09.06	04.09.07	19.00	9.60	27 weeks	0.95
Ajmer	M/sAngelique International Limited	105/05.06.06	11.08.06	11.08.07	24.19	13.98	30 weeks	1.21
Rajsamand	M/s Kalpataru Power Transformers limited	102/02.06.06	08.08.06	08.08.07	32.75	19.63	30 weeks	1.64
Dungarpur	M/sAngelique International Limited	104/23.05.06	29.07.06	29.07.07	38.95	14.46	32 weeks	1.94
Total								6.38

Source: Turnkey work orders and records of Central Payment Cell of Ajmer Discom

Annexure-13

(Referred to in paragraph 2.2.9)

Statement showing circle wise position of complaints received, redressed within time and beyond time for the last three years ending March 2007

Year /Circle		Total complaints received	Complaints redressed within time	Percentage of complaints redressed within time to total complaints	Complaints redressed beyond time	Percentage of complaints redressed beyond time to total complaints	Pending complaints
2004-05	JCC	239915	231121	96.33	8438	3.52	356
	JPDC	24951	23589	94.54	1126	4.51	236
	Alwar	33547	33495	99.84	43	0.13	9
	Kota	43838	40860	93.21	2748	6.27	230
2005-06	JCC	211183	201635	95.48	5409	2.56	4139
	JPDC	23950	22970	95.91	883	3.69	97
	Alwar	31099	31095	99.99	0	0	4
	Kota	47690	41596	87.22	3060	6.42	3034
2006-07	JCC	19403	17714	91.30	1689	8.70	0
	JPDC	19863	19031	95.81	832	4.19	0
	Alwar	28387	28291	99.66	92	0.32	4
	Kota	NA	NA	NA	NA	NA	NA
Total		723826	691397		24320		8109

Source: Return submitted by circle offices.

Note: JCC: Jaipur City Circle
JPDC: Jaipur District Circle

Annexure-14

(Referred to in paragraph 2.2.13)

Statement showing circle wise position of number of stopped/defective meters more than two months and their percentage to total consumer for the last three years ending March 2007

Circle/Month		Total Consumers	Total stopped/ defective meters	Stopped/ defective meters more than 2 months	Percentage of stopped meters unreplaced for more than 2 months to total consumer	Stopped meters lying unreplaced for more than 12 months
JCC	April 2006	497310	4320	1408	0.28	45
	March 2007	527806	10569	6172	1.17	340
JPDC	April 2006	228450	22606	17143	7.50	3360
	March 2007	247176	38687	32481	13.14	11960
Alwar	April 2006	224085	24872	29131	13.00	13738
	March 2007	237453	43274	38198	16.09	19961
Kota	April 2006	266584	14582	8794	3.30	3698
	March 2007	279472	24089	17610	6.30	6220

Source: Management Information System of Revenue section of JVVNL

Annexure-15
(Refer paragraph 2.2.17)

Statement showing the position of category wise Demand Notice not issued and connection not released within stipulated time in selected four circles for the year from 2002-03 to 2005-06

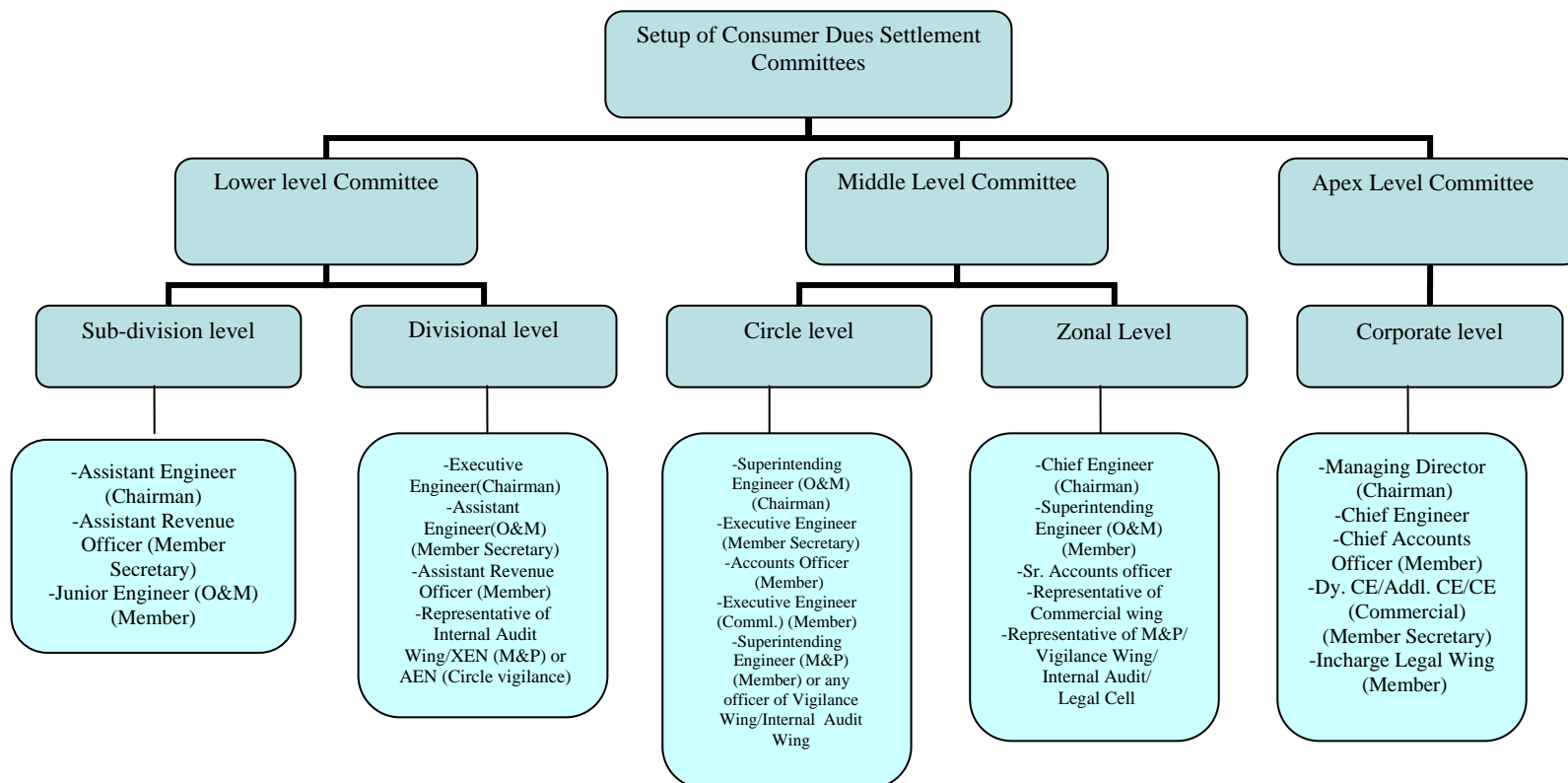
Sl no.	Year	Particulars		JCC	JPDC		Alwar		Kota		Total	
				Urban	Urban	Rural	Urban	Rural	Urban	Rural	Urban	Rural
1.	2002-03	DNs not issued within time	Domestic	31	23	687	25	1143	59	81	138	1911
			NDS	9	6	39	24	29	7	8	46	76
			Industrial	1	15	1	0	4	0	0	16	5
		Connection not released within time	Domestic	184	25	660	185	3293	127	71	521	4024
			NDS	15	1	84	5	47	3	1	24	132
			Industrial	11	2	7	1	4	0	0	14	11
2.	2003-04	DNs not issued within time	Domestic	51	26	753	71	885	0	36	148	1674
			NDS	12	1	67	18	42	0	0	31	109
			Industrial	1	2	6	0	5	1	11	4	22
		Connection not released within time	Domestic	202	63	583	201	2360	16	33	482	2976
			NDS	18	6	48	7	28	4	3	35	79
			Industrial	1	2	6	1	1	0	1	4	8
3.	2004-05	DNs not issued within time	Domestic	0	46	1161	0	2338	0	60	46	3559
			NDS	0	9	98	0	57	0	0	9	155
			Industrial	0	5	4	2	2	0	0	7	6
		Connection not released within time	Domestic	19	71	649	25	1769	0	52	115	2470
			NDS	2	13	31	0	16	1	3	16	50
			Industrial	13	0	8	2	6	0	1	15	15
4.	2005-06	DNs not issued within time	Domestic	0	45	2017	1	2988	0	0	46	5005
			NDS	0	17	120	0	54	0	0	17	174
			Industrial	0	7	18	3	12	0	0	10	30
		Connection not released within time	Domestic	14	77	890	44	2432	78	95	213	3417
			NDS	3	23	79	4	27	5	8	35	114
			Industrial	12	1	1	6	0	3	4	22	5
Total (2002-03 to 2005-06)		DNs not issued within time	Domestic	82	140	4618	97	7354	59	177	378	12149
			NDS	21	33	324	42	182	7	8	103	514
			Industrial	2	29	29	5	23	1	11	37	63
		Connection not released within time	Domestic	419	236	2782	455	9854	221	251	1331	12887
			NDS	38	43	242	16	118	13	15	110	375
			Industrial	37	5	22	10	11	3	6	55	39

Source: Monthly D.O. letters

Annexure-16

(Referred to paragraph 2.2.24)

Statement showing composition of consumer dues settlement committees



Annexure-17
(Referred to in paragraph 2.3.8)
Statement showing original, revised estimates of GLTPP and actual expenditure their
against up to March 2008

(Rs. in crore)

Sl. No.	Particulars	Original estimates (May 2002)	Revised estimates (December 2005)	Actual Expenditure Up to March 2008 (Provisional)
1.	Preliminary Investigation	0.30	0.20	0.35
2.	Land & site development	1.50	1.50	1.47
3.	Steam Generator Island	226.00	222.00	222.51
4.	Turbine generator Island			
5.	BALANCE OF PLANT			
(i)	Mechanical			
	(a) Lignite handling plant	18.00	56.89	56.03
	(b) Ash handling plant	6.00	10.34	10.23
	(c) Circulation water system & cooling Tower	8.50	8.91	10.79
	(d) other works & plant facilities	12.00	23.42	25.37
(ii)	Electrical			
	(a) Generator transformers	4.00	4.57	5.37
	(b) Switchyard	5.00	3.60	3.82
	(c) Other works including LT Transformers cable etc	12.00	23.40	29.43
(iii)	Control & Instrumentation	12.00	8.50	8.96
6.	External water supply system	83.00	64.56	65.02
7.	Initial Spares	1.00	1.00	0.00
8.	Civil Works			
(i)	Access and diversion of Roads	1.50	1.50	0.92
(ii)	Dry Ash Disposal Area Development	0.65	0.65	0.00
(iii)	Township colony	4.50	1.48	1.31
(iv)	Temporary construction Enabling work	1.00	1.10	1.97
(v)	Plant civil structural & other	39.00	94.00	67.10
(vi)	Circulating water system & cooling tower	0.00	0.00	4.08
9.	Erecting testing & commissioning	25.00	21.00	20.83
10.	Freight taxes & duties, Insurance & Price variation of main equipment.	72.50	70.50	93.04
11.	Development expenditure, legal & establishment, contingencies, audit and accounts expenditure	6.25	4.25	36.89
12.	Consultancy & Engineering	3.00	1.40	0.53
13.	Pre-operative expenditure	1.75	1.77	10.51
14.	IDC & Finance cost	73.45	73.45	79.96
15.	Advances	0.00	0.00	7.77
	Total project cost	617.90	699.99	764.26

Annexure-18
(Referred to in paragraph 2.3.12)
Statement showing delay in execution as compared to PERT Chart

S. No.	Name of Item/Activity	Tendering starts			Tendering finished			Ordering			Completion of works		
		Stipulate Date of start as per PERT chart	Actual finish date	Delay in month	Stipulate Date of finish as per PERT chart	Actual finish date	Delay in month	Stipulate Date of finish as per PERT chart	Actual finish date	Delay in month	Stipulate Date of finish as per PERT chart	Actual finish date	Delay in months
1	6.6 KV Switchgear	11.3.04	25.11.03	0	19.05.04	26.02.04	0	23.06.04	24.03.04	0	01.11.05	24.05.06	6
2	St. Transformer	15.04.04	02.09.03	0	23.06.04	14.11.03	0	28.07.04	30.01.04	0	30.09.05	24.05.06	7
3	LT Transformer	20.5.04	25.11.03	0	28.07.04	31.01.04	0	01.09.04	09.03.04	0	31.01.06	07.05.07	15
4	Bus ducting	20.5.04	25.11.03	0	28.07.04	03.02.04	0	01.09.04	09.03.04	0	30.12.05	24.05.06	4
5	LT Switchgear	20.5.04	26.11.03	0	28.07.04	01.03.04	0	01.09.04	19.04.04	0	31.01.06	31.10.07	21
6	MCC, ACDB	20.5.04	26.11.03	0	28.07.04	01.03.04	0	01.09.04	19.04.04	0	31.01.05	31.10.07	24
7	DG Set	24.6.04	10.01.04	0	01.09.04	16.04.04	0	06.10.04	17.05.04	0	21.03.06	25.06.07	15
	Civil Works												
1	Chimney	05.02.04	20.07.03	0	27.03.04	20.10.03	0	26.04.04		0	29.12.05	12.04.06	4
2	RW Treatment System	-	-	-	1.12.03	NA	0	02.02.04	11.12.03	0	03.08.05	30.06.06	10
3	Intake pumping Station	-	--	-	30.08.04	02.02.04	0	30.08.04	24.04.04	0	17.01.05	14.04.06	14
4	RW treatment plant	-	-	--	15.03.04	21.09.03	0	26.06.04	27.01.04	0	03.01.06	25.06.05	0
5	DM plant Basic	-	-	-	15.03.04	21.09.03	0	26.06.04	20.12.03	0	28.02.06	15.03.06	1
6	Super structure	-	-	-	01.03.04	NA	0	02.06.04	01.03.05	8	NA	NA	0

	Mechanical												
1	Lignite handling system	02.08.04	31.01.04	0	28.09.04	09.03.05	5	02.11.04	07.04.05	5	28.04.06	15.11.07	19
2	Ash handling system	02.08.04	31.01.04	0	28.09.04	04.06.05	8	02.11.04	13.07.05	8	28.04.06	01.01.08	20
3	EOT crane	19.01.04	09.01.04	0	27.03.04	17.04.04	1	05.06.04	27.04.07	-	31.05.05	05.04.05	-
4	Cooling Tower	05.02.04	25.11.03	0	14.04.04	31.01.04	-	19.05.04	27.02.04	-	04.01.06	01.02.06	1
5	Misc. pumps & tank	30.06.04	31.01.04	0	26.08.04	-	-	30.09.04	23.11.04	2	09.03.06	09.03.06	-
6	Air Compressor	21.07.04.	02.10.04	2	28.09.04	25.06.05	9	02.11.04	29.07.05	9	13.03.06	23.11.06	8
7	LP piping	08.09.04	02.10.04	1	16.11.04	11.07.05	-	21.12.04	03.08.05	7	11.03.06	17.03.07	12
8	Misc. valves & RE JTS	23.03.04	20.05.05	14	25.05.04	15.07.05	14	29.06.04	09.08.05	13	02.01.06	31.08.06	8
9	Fire Protection system	29.07.04			06.10.04	12.04.05	6	10.11.04	10.05.05	6	25.04.06	31.03.06	-
10	Lime stone handling plant	02.08.04	05.2.04	0	28.09.04	15.07.05	10	02.11.04	29.07.05	9	28.04.06	26.12.06	-

Annexure-19
(Referred to in paragraphs 3.1 and 3.9.2)
Passenger amenities to be provided on bus stands

Category	A	B	C
City/town	Big cities	Cities	Small City/ town
No. of BS	6	21	40
Amenities	AC waiting hall Platform Adequate chairs with fan and light Desert coolers Urinal and Toilets for men and women Drinking water Enquiry window Ticket reservation Complaint and suggestion box Time table and fare list Public address system Weighing machine Food stall Public telephone Cloak room Bank and Post Office Police Post Porter	Waiting room Sufficient chairs with fan and light Urinal and toilets for men and women Enquiry and ticket window Public address system Ticket reservation Complaint and suggestion box Time table and fare list Drinking water Food stall Book shop Public telephone Porter	Waiting shed Sufficient chairs with fan and light Enquiry and Ticket window Food stall Water booth Urinal and Toilets for men and women. Complaint and suggestion box Time table and fare list Public address system

Source: 1. Annual Reports of the Roadways for 2004-05 and onwards.
2. Circulars issued from time to time including Circular dated 26 July 2007.

Annexure - 20

(Referred to in Paragraph 4.22)

Statement showing lack of responsiveness to Inspection Reports

Sl. No.	Name of Department	Outstanding Inspection Reports and Paragraphs				1 st compliance not received				Compliance not received for more than two years			
		No. of PSUs	No. of outstanding IRs	No. of outstanding paragraphs	Monetary value (Rs. in lakh)	No. of PSUs	No. of outstanding IRs	No. of outstanding paragraphs	Monetary value (Rs. in lakh)	No. of PSUs	No. of outstanding IRs	No. of outstanding paragraphs	Monetary value (Rs. in lakh)
1.	2.	3.	4.	5.	6.	7.	8.	9.	10.	11.	12.	13.	14.
(A) Government companies													
1.	Agriculture and allied	3	17	45	1227.98	1	1	4	13.01	-	-	-	-
2.	Industries	2	88	334	13904.34	-	-	-	-	-	-	-	-
3.	Handloom and Handicrafts	1	4	8	216.99	-	-	-	-	-	-	-	-
4.	Mining	1	13	48	3326.72	1	2	11	75.12	-	-	-	-
5.	Construction	2	23	88	2505.73	-	-	-	-	-	-	-	-
6.	State Excise	2	9	22	1847.41	-	-	-	-	-	-	-	-
7.	Tourism	2	48	133	1435.57	1	1	3	0.47	-	-	-	-
8.	Power	6	173	506	52096.16	1	2	7	230.78	-	-	-	-
Total		19	375	1184	76560.90	4	6	25	319.38	-	-	-	-
(B) Statutory corporations													
1.	Finance	1	91	264	87352.69	-	-	-	-	-	-	-	-
2.	Agriculture	1	30	33	213.80	-	-	-	-	-	-	-	-
3.	Transport	1	56	113	2283.99	-	-	-	-	---	---	-	-
Total		3	177	410	89850.48	-	-	-	-	-	--	--	-
Grand Total (A+B)		22	552	1594	166411.38	4	6	25	319.38	-	-	-	-

Annexure-21
(Referred to in Paragraph 4.22)
Statement showing the department wise draft paragraphs/reviews
replies to which were awaited

Sl. No.	Name of the Department	No. of draft paragraphs	Period/date of issue
1.	Energy	3	July to September 2008
2.	Mines	3	July 2008
3.	Tourism	1	September 2008
4.	Industries	1	July 2008
Total		8	