

## **APPENDIX - 1.1**

### **PART A: STRUCTURE AND FORM OF GOVERNMENT ACCOUNTS**

*(Reference: Paragraph 1.1)*

**Structure of Government Accounts:** The accounts of the State Government are kept in three parts (i) Consolidated Fund, (ii) Contingency Fund and (iii) Public Account.

#### **Part I: Consolidated Fund**

All revenues received by the State Government, all loans raised by issue of treasury bills, internal and external loans and all moneys received by the Government in repayment of loans shall form one consolidated fund entitled 'The Consolidated Fund of State' established under Article 266(1) of the Constitution of India.

#### **Part II: Contingency Fund**

Contingency Fund of State established under Article 267(2) of the Constitution is in the nature of an imprest placed at the disposal of the Governor to enable him to make advances to meet urgent unforeseen expenditure, pending authorisation by the Legislature. Approval of the Legislature for such expenditure and for withdrawal of an equivalent amount from the Consolidated Fund is subsequently obtained, whereupon the advances from the Contingency Fund are recouped to the Fund.

#### **Part III: Public Account**

Receipts and disbursements in respect of certain transactions such as small savings, provident funds, reserve funds, deposits, suspense, remittances etc., which do not form part of the Consolidated Fund, are kept in the Public Account set up under Article 266(2) of the Constitution and are not subject to vote by the State legislature.

**APPENDIX - 1.1**  
**PART B: LAYOUT OF FINANCE ACCOUNTS**  
*(Reference: Paragraph 1.1)*

Statement	Layout
Statement No.1	Presents the summary of transactions of the State Government – receipts and expenditure, revenue and capital, public debt receipts and disbursements etc., in the Consolidated Fund, Contingency Fund and Public Account of the State.
Statement No.2	Contains the summarized statement of capital outlay showing progressive expenditure to the end of 2007-08.
Statement No.3	Gives financial results of irrigation works, their revenue receipts, working expenses and maintenance charges, capital outlay, net profit or loss, etc.
Statement No.4	Indicates the summary of debt position of the State which includes borrowing from internal debt, Government of India, other obligations and servicing of debt.
Statement No.5	Gives the summary of loans and advances given by the State Government during the year, repayments made, recoveries in arrears etc.
Statement No.6	Gives the summary of guarantees given by the Government for repayment of loans etc. raised by the statutory corporations, local bodies and other institutions.
Statement No.7	Gives the summary of cash balances and investments made out of such balances.
Statement No.8	Depicts the summary of balances under Consolidated Fund, Contingency Fund and Public Account as on 31 March 2008.
Statement No.9	Shows the revenue and expenditure under different heads for the year 2007-08 as a percentage of total revenue/expenditure.
Statement No.10	Indicates the distribution between the charged and the voted expenditure incurred during the year.
Statement No.11	Indicates the detailed account of revenue receipts by minor heads.
Statement No.12	Provides accounts of revenue expenditure by minor heads under non-plan and plan separately and capital expenditure by major headwise.
Statement No.13	Depicts the detailed capital expenditure incurred during and to the end of 2007-08.
Statement No.14	Shows the details of investment of the State Government in statutory corporations, Government companies, other joint stock companies, co-operative banks and societies etc., upto the end of 2007-08.
Statement No.15	Depicts the capital and other expenditure to the end of 2007-08 and the principal sources from which the funds were provided for that expenditure.
Statement No.16	Gives the detailed account of receipts, disbursements and balances under heads of account relating to Debt, Contingency Fund and Public Account.
Statement No.17	Presents detailed account of debt and other interest bearing obligations of the Government of Goa.
Statement No.18	Provides the detailed account of loans and advances given by the Government of Goa, the amount of loan repaid during the year, the balance as on 31 March 2008.
Statement No.19	Gives the details of earmarked balances of reserve funds.

**APPENDIX - 1.1**

**PART C: LIST OF TERMS USED IN THE CHAPTER I AND BASIS OF THEIR CALCULATION**

*(Reference: Paragraph 1.2)*

<b>Terms</b>	<b>Basis of calculation</b>
Buoyancy of a parameter	Rate of Growth of the parameter/ GSDP Growth
Buoyancy of a parameter (X) With respect to another parameter (Y)	Rate of Growth of parameter (X)/ Rate of Growth of parameter (Y)
Rate of Growth (ROG)	$[(\text{Current year Amount} / \text{Previous year Amount}) - 1] * 100$
Development Expenditure	Social Services + Economic Services
Average interest paid by the State	$\text{Interest payment} / [(\text{Amount of previous year's Fiscal Liabilities} + \text{Current year's Fiscal Liabilities}) / 2] * 100$
Weighted Interest Rate (Average interest paid by the states)	$\text{Interest Payment} / \{(\text{Amount of previous year's Fiscal Liabilities} + \text{Current year's Fiscal Liabilities}) / 2\} * 100$
Interest spread	GSDP growth – Average Interest Rate
Quantum spread	Debt stock * Interest spread
Interest received as <i>per cent</i> to Loans Outstanding	$\text{Interest Received} / [(\text{Opening balance} + \text{Closing balance of Loans and Advances}) / 2] * 100$
Revenue Deficit	Revenue Receipt – Revenue Expenditure
Fiscal Deficit	Revenue Expenditure + Capital Expenditure + Net Loans and Advances – Revenue Receipts – Miscellaneous Capital Receipts
Primary Deficit	Fiscal Deficit – Interest payments
Balance from Current Revenue (BCR)	Revenue Receipts <b>minus</b> all Plan grants and Non-plan Revenue Expenditure excluding expenditure recorded under the major head 2048 – Appropriation for reduction of Avoidance of debt

**APPENDIX-1.2**  
(Referred to in paragraph 1.5.5)

**DEPARTMENT-WISE AND YEAR-WISE BREAK UP OF OUTSTANDING  
UTILISATION CERTIFICATES AS ON 30 JUNE 2008**

Sr. No.	Name of the Department	No. of utilization certificates	Amount (Rupees in crore)
1.	<b>Education</b> Directorate of Education	284	10.48
2.	Directorate of Technical Education	3	0.83
3.	Directorate of Higher Education	26	9.73
4.	<b>Sports</b> Director of Sports & Youth Affairs	180	30.42
5.	Town and Country Planning Department	32	13.23
6.	<b>Urban Development</b> Directorate of Municipal Administration	452	94.80
7.	<b>Social Welfare</b> i) Directorate of Women and Child Welfare ii) Directorate of Social Welfare	72 76	2.61 2.52
8.	<b>Science, Technology &amp; Environment</b> Directorate of Science, Technology & Environment	39	10.04
9.	<b>Panchayati Raj</b> i) Directorate of Panchayat (South), ii) Directorate of Panchayat (North)	1202 955	10.90 47.43
10.	i) GAD Secretariat ii) Directorate of Official Language	13 18	2.66 2.07
11.	<b>Health</b> i) Directorate of Health Services ii) Institute of Psychiatry & Human Behaviour	15 1	3.06 0.01
12.	<b>Home Department</b> Director General of Police	1	0.02
13.	<b>Finance Department</b> Directorate of Small Savings	5	5.00
14.	Directorate of Art & Culture	470	16.17
15.	Directorate of Agriculture	129	0.85
16.	<b>Law Department</b> Goa Legal Services Authority	4	0.60
<b>TOTAL</b>		<b>3977</b>	<b>263.43</b>

**APPENDIX - 1.3***(Referred to in paragraph 1.5.6)***STATEMENT SHOWING NON-SUBMISSION OF ACCOUNTS BY  
DEPARTMENTS FOR FINANCIAL ASSISTANCE GIVEN TO  
VARIOUS INSTITUTIONS**

<b>Sr. No.</b>	<b>Name of the Department</b>	<b>No. of institutions under the Department</b>
1.	Directorate of Higher Education	8
2.	Directorate of Agriculture	1
3.	Chief Town Planner	2
4.	Directorate of Panchayat	1
5.	Directorate of Municipal Administration	7
6.	Directorate of Technical Education	1
7.	Directorate of Industries	1
8.	Directorate of Social Welfare	1
9.	Directorate of Education	79
	<b>TOTAL</b>	<b>101</b>

## APPENDIX - 1.4

*(Referred to in paragraph 1.5.7)*

### ABSTRACT OF PERFORMANCE OF AUTONOMOUS BODIES

The status of submission of accounts by the autonomous bodies and submission of Audit Reports thereon to the State Legislature as of June 2008 is given below.

Sr. No.	Name of the Body/Authority	Entrustment of audit	Year for which Accounts due	Year upto which Accounts received	Year upto which Audit Report issued	Year upto which Audit Report laid in the legislature
1.	Goa Tillari Irrigation Development Corporation	1.4.2008 to 31.3.2012	2006-07 2007-08	2005-06	2005-06	2004-05
2.	Goa State Commission for Backward Classes	1.4.2004 to 31.3.2009	2007-08	2006-07	2006-07	2005-06
3.	Goa University	1.4.2005 to 31.3.2010	2006-07 2007-08	2005-06	2005-06	2005-06
4.	Goa Khadi & Village Industries Board	1.4.2008 to 31.3.2013	2006-07	2005-06	2005-06	2004-05
5.	Goa Housing Board	1.4.2007 to 31.3.2012	2006-07	2006-07	2006-07	2004-05

**APPENDIX – 1.5**  
(Referred to in paragraph 1.6)

**DEPARTMENT WISE AND CATEGORY WISE DETAILS OF MISAPPROPRIATION, LOSSES ETC. REPORTED UPTO 31 MARCH 2008  
PENDING FINALISATION AT THE END OF JUNE 2008**

Sr. No.	Name of the Department	Awaiting Dept. criminal investigation		Departmental action started but not finalised		Criminal proceedings finalized but execution of certificate cases for recovery of the amount pending		Awaiting orders for recovery or write off		Pending in the courts of law		Total	
		No. of items	Amount	No. of items	Amount	No. of items	Amount	No. of items	Amount	No. of items	Amount	No. of items	Amount
(1)	(2)	(3)	(4)	(5)	(6)	(7)	(8)	(9)	(10)	(11)	(12)	(13)	(14)
<i>(Rupees in lakh)</i>													
1.	<b>Panchayati Raj</b> Director of Panchayat, Panaji	--	--	--	--	--	--	2	0.79	--	--	2	0.79
2.	<b>Home</b> a) Deputy Commandant General, Home Guards b) Director General of Police	--	--	--	--	--	--	--	--	1	4.95	1	4.95
		--	--	--	--	--	--	--	--	2*	1.38	2	1.38
3.	<b>Civil Supplies</b>	--	--	2	2.89	--	--	--	--	--	--	2	2.89
4.	<b>Forest</b> Conservator of Forest	--	--	1	0.67	--	--	--	--	--	--	1	0.67

\* In 1 case money value is not determined

5.	<b>Power Department</b> Chief Electrical Engineer	2	57.94	1	40.24	--	--	--	--	--	--	3	98.18
6.	<b>Public Works Department</b> Chief Engineer, PWD	--	--	1	38.60	--	--	--	--	1	0.20	2	38.80
7.	Goa Medical College	1	2.39	--	--	--	--	--	--	--	--	1	2.39
8.	<b>Education</b> Director of Education, Panaji	--	--	--	--	--	--	--	--	1	0.77	1	0.77
9.	<b>E. S. I. Scheme</b>	--	--	--	--	--	--	1	1.85	--	--	1	1.85
10.	<b>Technical Education</b> Govt. Polytechnic Mayem, Bicholim	1	0.40	--	--	--	--	--	--	--	--	1	0.40
<b>TOTAL</b>		<b>4</b>	<b>60.73</b>	<b>5</b>	<b>82.40</b>	<b>--</b>	<b>--</b>	<b>3</b>	<b>2.64</b>	<b>5</b>	<b>7.30</b>	<b>17</b>	<b>153.07</b>



## APPENDIX - 1.6

(Referred to in paragraph 1.6.1)

### DEPARTMENT-WISE DETAILS OF WRITE-OFF AND WAIVER OF RECOVERY

Sr. No.	Name of Department	Write off	
		No. of Cases	Amount (in Rupees)
1.	<b>TECHNICAL EDUCATION</b> Goa College of Art	31	11444
2.	<b>ANIMAL HUSBANDRY &amp; VETERINARY SERVICES</b> Director of Animal Husbandry & Veterinary Services	34	18365
3.	<b>FINANCE DEPARTMENT</b> Directorate of Accounts	1	12120
4.	<b>HEALTH DEPARTMENT</b> Directorate of Health Services	8	91723
5.	<b>AGRICULTURE DEPARTMENT</b> Directorate of Agriculture	38	82559
	<b>Total</b>	<b>112</b>	<b>216211</b>

**APPENDIX - 1.7**

(Referred to in paragraph 1.7.1)

**SUMMARISED FINANCIAL POSITION OF THE GOVERNMENT OF GOA**

(Rupees in crore)

As on 31 March 2007		Liabilities	As on 31 March 2008	
<b>1224.49</b>		<b>Internal Debt</b>		<b>1587.06</b>
	1107.68	Market Loans bearing interest	1477.36	
	26.68	Loans from LIC	24.69	
	70.76	Loans from other institutions	71.66	
	18.18	Loans from NABARD	12.35	
	1.19	Loans from National Co-operatives Development Corporation	1.00	
	-	Ways and Means Advances /overdraft	-	
<b>3465.51</b>		<b>Loans and Advances from Central Government</b>		<b>3539.42</b>
	2682.60	Non-Plan Loans	2778.54	
	772.88	Loans for State Plan Schemes	750.34	
	0.09	Loans for Central Plan Schemes	0.07	
	9.94	Loans for Centrally Sponsored Plan Schemes	10.47	
<b>30.00</b>		<b>Contingency Fund</b>		<b>200.00</b>
<b>632.79</b>		<b>Small savings, Provident Fund etc.</b>		<b>721.95</b>
<b>371.32</b>		<b>Deposits</b>		<b>440.28</b>
<b>139.65</b>		<b>Reserve Funds</b>		<b>174.55</b>
<b>28.07</b>		<b>Remittances</b>		<b>79.00</b>
<b>(-) 29.19</b>		<b>Suspense and Miscellaneous</b>		<b>60.50</b>
<b>5862.64</b>				<b>6802.76</b>
As on 31 March 2007		Assets	As on 31 March 2008	
<b>4289.48</b>		<b>Gross Capital Outlay on Fixed Assets</b>		<b>4978.01</b>
	266.06	Investment in shares of Companies, Corporation etc.	299.17	
	4023.42	Other Capital Outlay	4678.84	
<b>52.74</b>		<b>Loans and Advances</b>		<b>71.16</b>
	38.44	Other Development Loans	48.26	
	14.30	Loans to Government Servants	22.90	
<b>0.74</b>		<b>Advances</b>		<b>0.70</b>
<b>-</b>		<b>Remittances</b>		<b>--</b>
<b>-</b>		<b>Suspense &amp; Miscellaneous Balances</b>		
<b>495.79</b>		<b>Cash</b>		<b>725.13</b>
		Cash in Treasuries		
	1.45	Departmental Cash Balances	1.45	
	0.12	Permanent Advances	0.12	
	355.50	Cash Balance Investment	655.46	
	132.62	Earmarked Fund Investment	167.96	
	6.10	Deposits with Reserve Bank	(-) 99.86	
<b>1016.49</b>		<b>Deficit in Government Accounts</b>		
	(-) 141.45	Revenue Deficit of the current year	(-) 166.13	<b>850.36</b>
	1157.94	Accumulated deficit as on 31 March 2007	1016.49	
		Appropriation to Contingency Fund		<b>170.00</b>
<b>7.40</b>		<b>Net effect of Balances taken over</b>		<b>7.40</b>
	(-) 431.66	Balances taken over on 30 May 1987 under capital	(-) 431.66	
	424.26	Net result of allocation of Capital Expenditure	424.26	
<b>5862.64</b>				<b>6802.76</b>

**APPENDIX - 1.8**  
(Referred to in paragraph 1.7.1)

**TIME SERIES DATA ON STATE GOVERNMENT FINANCES**

(Rupees in crore)

	2003-04	2004-05	2005-06	2006-07	2007-08
<b>Part A. Receipts</b>					
<b>1. Revenue Receipts</b>	<b>1623</b>	<b>1820</b>	<b>2169</b>	<b>2610</b>	<b>2944</b>
<b>(i) Tax Revenue</b>	<b>710(44)</b>	<b>857(47)</b>	<b>1096(51)</b>	<b>1292(50)</b>	<b>1359(46)</b>
Sales Tax	502(71)	567(66)	743(68)	845(65)	879(64)
State Excise	53(7)	56(7)	55(5)	57(4)	76(6)
Taxes on Vehicles	51(7)	59(7)	64(6)	75(6)	82(6)
Stamps duty and Registration fees	29(4)	36(4)	60(5)	116(9)	118(9)
Land Revenue	5(1)	5(1)	5(1)	6(1)	7(1)
Taxes on goods and passengers	41(6)	103(12)	131(12)	138(11)	113(8)
Other Taxes	29(4)	31(3)	38(3)	55(4)	84(6)
<b>(ii) Non-Tax Revenue</b>	<b>725(45)</b>	<b>729(40)</b>	<b>761(35)</b>	<b>918(35)</b>	<b>1043(36)</b>
<b>(iii) State's share in Union taxes and duties</b>	<b>136(8)</b>	<b>162(9)</b>	<b>245(11)</b>	<b>312(12)</b>	<b>394(13)</b>
<b>(iv) Grants-in-aid from Government of India</b>	<b>52(3)</b>	<b>72(4)</b>	<b>67(3)</b>	<b>88(3)</b>	<b>148(5)</b>
<b>2. Misc. Capital Receipts</b>	<b>-</b>	<b>-</b>	<b>-</b>	<b>-</b>	<b>-</b>
<b>3. Total Revenue and Non debt capital receipt (1+2)</b>	<b>1623</b>	<b>1820</b>	<b>2169</b>	<b>2610</b>	<b>2944</b>
<b>4. Recoveries of Loans and Advances</b>	<b>7</b>	<b>6</b>	<b>6</b>	<b>6</b>	<b>6</b>
<b>5. Public Debt Receipts</b>	<b>792</b>	<b>702</b>	<b>698</b>	<b>639</b>	<b>505</b>
Internal Debt (excluding Ways & Means Advances and Overdrafts)	273	151	186	100	414
Net transactions under Ways and Means Advances and Overdraft	-	-	-	-	-
Loans and Advances from Government of India	519	551	512	539	91
<b>6. Total Receipts in the Consolidated Fund (3+4+5)</b>	<b>2422</b>	<b>2528</b>	<b>2873</b>	<b>3255</b>	<b>3455</b>
<b>7. Contingency Fund Receipts</b>	<b>-</b>	<b>1</b>	<b>-</b>	<b>-</b>	<b>170</b>
<b>8. Public Accounts receipts</b>	<b>3239</b>	<b>3157</b>	<b>3285</b>	<b>3611</b>	<b>4038</b>
<b>9. Total receipts of the State (6+7+8)</b>	<b>5661</b>	<b>5686</b>	<b>6158</b>	<b>6866</b>	<b>7663</b>
<b>Part B. Expenditure</b>					
<b>10. Revenue Expenditure</b>	<b>1764(85)</b>	<b>1943(82)</b>	<b>2191(79)</b>	<b>2469(80)</b>	<b>2778(80)</b>
Plan	284(16)	365(19)	415(19)	484(20)	566(20)
Non-plan	1480(84)	1578(82)	1776(81)	1985(80)	2212(80)
General Services (including Interests payments)	582(33)	633(33)	743(34)	786(32)	837(30)
Economic Services	618(35)	642(34)	711(32)	852(34)	1010(36)
Social Services	564(32)	668(34)	737(34)	831(34)	931(34)
Grants-in-aid and contributions	214	219	296	309	333
<b>11. Capital Expenditure</b>	<b>301(15)</b>	<b>426(18)</b>	<b>580(21)</b>	<b>626(20)</b>	<b>688(20)</b>
Plan	301(100)	425(100)	579(100)	622(99)	683(99)
Non-plan	-	1	1	4(1)	5(1)
General Services	28(9)	70(17)	95(16)	83(13)	96(14)
Economic Services	184(61)	265(62)	389(67)	421(67)	450(68)
Social Services	89(30)	91(21)	96(17)	122(19)	142(21)
<b>12. Disbursement of Loans and Advances</b>	<b>10</b>	<b>7</b>	<b>7</b>	<b>8</b>	<b>25</b>
<b>13. Total (10+11+12)</b>	<b>2075</b>	<b>2376</b>	<b>2778</b>	<b>3103</b>	<b>3491</b>

**Audit Report for the year ended 31 March 2008**

<b>14. Repayments of Public Debt</b>	<b>363</b>	<b>230</b>	<b>71</b>	<b>73</b>	<b>68</b>
Internal Debt (excluding Ways and Means Advances and Overdrafts)	34	38	40	42	51
Net transactions under Ways and Means Advances and Overdraft	21	66	-	-	-
Loans and Advances from Government of India	308	126	31	31	17
<b>15. Appropriation to Contingency Fund</b>	<b>-</b>	<b>-</b>	<b>-</b>	<b>-</b>	<b>170</b>
<b>16. Total disbursement out of Consolidated Fund (13+14+15)</b>	<b>2416</b>	<b>2606</b>	<b>2849</b>	<b>3176</b>	<b>3729</b>
<b>17. Contingency Fund disbursements</b>	<b>1.17</b>	<b>0.22</b>	<b>-</b>	<b>-</b>	<b>170</b>
<b>18. Public Accounts disbursements</b>	<b>3218</b>	<b>2971</b>	<b>3134</b>	<b>3519</b>	<b>3704</b>
<b>19. Total disbursement by the State (16+17+18)</b>	<b>5635</b>	<b>5577</b>	<b>5983</b>	<b>6695</b>	<b>7603</b>
<i>Part C. Deficits</i>					
<b>20. Revenue Deficit (1-10)</b>	<b>141</b>	<b>123</b>	<b>22</b>	<b>(-) 141</b>	<b>(-) 166</b>
<b>21. Fiscal Deficit (3+4-13)</b>	<b>445</b>	<b>550</b>	<b>603</b>	<b>487</b>	<b>541</b>
<b>22. Primary Deficit (-)/surplus (+) (21-23))</b>	<b>124</b>	<b>227</b>	<b>203</b>	<b>60</b>	<b>94</b>
<i>Part D. Other data</i>					
<b>23. Interest Payments (included in revenue expenditure)</b>	<b>321</b>	<b>323</b>	<b>400</b>	<b>427</b>	<b>447</b>
<b>24. Arrears of Revenue (Percentage of Tax &amp; non-tax Revenue Receipts)</b>	<b>321</b>	<b>322</b>	<b>425</b>	<b>532</b>	<b>460</b>
<b>25. Financial Assistance to local bodies etc.</b>	<b>214</b>	<b>219</b>	<b>297</b>	<b>309</b>	<b>333</b>
<b>26. Ways and Means Advances (WMA)/Overdraft availed (days)</b>	<b>249/21</b>	<b>221/12</b>	<b>-</b>	<b>-</b>	<b>-</b>
<b>27. Interest on WMA/Overdraft</b>	<b>1.34/0.23</b>	<b>1.13/0.05</b>	<b>-</b>	<b>-</b>	<b>-</b>
<b>28. Gross State Domestic Product (GSDP)*</b>	<b>9290</b>	<b>10219</b>	<b>11685</b>	<b>13796</b>	<b>15176</b>
<b>29. Outstanding Debt (year end)</b>	<b>3838</b>	<b>4350</b>	<b>5018</b>	<b>5694</b>	<b>6289</b>
<b>30. Outstanding guarantees including interest (year end)</b>	<b>491</b>	<b>621</b>	<b>631</b>	<b>624</b>	<b>311*</b>
<b>31. Maximum amount guaranteed (year end)</b>	<b>628</b>	<b>719</b>	<b>709</b>	<b>715</b>	<b>528</b>
<b>32. Number of incomplete projects</b>	<b>17</b>	<b>12</b>	<b>55</b>	<b>11</b>	<b>2</b>
<b>33. Capital blocked in incomplete projects</b>	<b>466.93</b>	<b>464.18</b>	<b>532.88</b>	<b>568.02</b>	<b>609</b>

Note: Figures in brackets represent percentages (rounded) to total of each sub heading

\* Source of GSDP – Budget at a glance of the Govt. of Goa.

\* Excluding the information awaited from Goa, Daman & Diu KVIB, Vausmach Industries, Margao Industrial Estate, Goa Construction Corporation Ltd. and Goa State Scheduled Caste and OBC Finance Development Corporation Ltd.

**APPENDIX - 1.9***(Referred to in Paragraph 1.7.2.3)***POSITION OF ARREARS AS ON 30TH JUNE 2008 IN PREPARATION OF  
PROFORMA ACCOUNTS**

<b>Department</b>	<b>No. of undertakings under the Department</b>	<b>Accounts not finalized (name of undertakings)</b>	<b>Year upto which accounts finalised</b>	<b>Investment as per last accounts (Rupees in crore)</b>
Inland Water Transport	1	River Navigation Department	2003-04	92.57
Power	1	Chief Electrical Engineer	2005-06	536.97
<b>Total</b>				<b>629.54</b>

**APPENDIX - 2.1**

*(Referred to in paragraph 2.3.1)*

**AREAS IN WHICH MAJOR SAVINGS OCCURRED**

<b>Grant No./Major Head</b>	<b>Areas in which major savings occurred</b>	<b>Savings (Rupees in crore)</b>
<b>8</b>	<b>Treasury and Accounts Administration North Goa (Revenue Voted)</b>	
2071	Pension and other retirement benefits	47.15
<b>19</b>	<b>Industries Trade and Commerce (Revenue Voted)</b>	
2851	Village and Small Industries	10.84
<b>21</b>	<b>Public Works (Capital Voted)</b>	
4215	Water Supply & Sanitation	69.93
<b>30</b>	<b>Lotteries (Revenue Voted)</b>	
2075	State Lotteries	683.41
<b>55</b>	<b>Municipal Administration (Revenue Voted)</b>	
2217	Urban development	59.74

**APPENDIX – 2.2**  
(Referred to in paragraph 2.3.1)

**SAVINGS IN EXCESS OF RUPEES TWO CRORE AND ALSO BY  
MORE THAN 10 PER CENT OF THE TOTAL PROVISION**

*(Rupees in crore)*

Sr. No.	Grant/ Appropriation	Total Provision	Actual Expenditure	Savings
<b>Revenue (Voted)</b>				
1.	07 - Settlement and Land Records	7.22	3.28	3.94
2.	31 - Panchayats	46.46	39.65	6.81
3.	35 – Higher Education	58.11	47.72	10.39
4.	43 - Art & Culture	15.88	12.51	3.37
5.	58 - Women and Child Development	19.11	16.72	2.39
6.	65 - Animal Husbandry and Veterinary Services	19.03	16.54	2.49
7.	71 - Cooperation	6.86	4.67	2.19
<b>Capital (Voted)</b>				
8.	8 - Treasury and Accounts Administration (South Goa)	15.19	12.77	2.42
9.	18 - Jails	7.49	1.94	5.55
10.	19 - Industries Trade and Commerce	4.00	1.00	3.00
11.	45 - Archives and Archaeology	5.50	0.46	5.04
12.	47 - Goa Medical College	10.74	7.46	3.28
13.	67 - Ports Administration	4.50	1.62	2.88
14.	70 - Civil Supplies	33.20	26.18	7.02
<b>Capital (Charged)</b>				
15.	Appropriation Debt Services	205.85	68.30	137.55
<b>TOTAL</b>		<b>459.14</b>	<b>260.82</b>	<b>198.32</b>

**APPENDIX - 2.3**

*(Referred to in paragraph 2.3.2)*

**STATEMENT SHOWING EXCESS OVER PROVISION RELATING TO PREVIOUS YEARS REQUIRING REGULARISATION**

<b>Year</b>	<b>No. of grants/ Appropriation in the year</b>	<b>Grant/ Appropriation No.</b>	<b>Excess amount (Rupees in crore)</b>	<b>Remarks</b>
1998-1999	10	7, 32, 33, 34, 35, 36, 37, 46, 53 and 59	1.35	Public Accounts Committee recommended for regularisation. Report of regularisation awaited
1999-2000	6	9, 27, 40, 42, 46, 58	0.39	
2000-2001	5	8, 37, 44, 58 and Public Debt	14.79	
2001-2002	3	44, 58 and Public Debt	307.91	
2002-2003	2	50, Appropriation Debt Services	675.33	
2003-2004	2	2, Appropriation Debt Services	549.59	--
2004-2005	2	8, Appropriation Debt Services	293.85	--
2005-2006	2	38, Appropriation Debt Services	17.68	--
2006-2007	2	1, 21	0.09	--
<b>TOTAL</b>			<b>1860.98</b>	



## APPENDIX - 2.4

(Referred to in paragraph 2.3.4)

STATEMENT SHOWING CASES WHERE SUPPLEMENTARY  
GRANTS PROVED UNNECESSARY

(Rupees in crore)

Sr. No.	Grant/Appropriation	Original	Amount of grants/appropriation		
			Supplementary	Actual expenditure	Savings
<b>Revenue (Voted)</b>					
1.	1- Legislature Secretariat	7.42	0.30	7.16	0.56
2.	10 – Notary Services	2.89	0.09	2.57	0.41
3.	11 – Excise	3.77	0.04	3.76	0.05
4.	13- Transport	14.90	0.05	14.05	0.90
5.	23 – Home	1.33	0.30	1.15	0.48
6.	40 – Goa College of Engineering	9.15	0.02	8.20	0.97
7.	44 – Goa College of Art	1.09	0.02	1.04	0.07
8.	48 – Health Services	72.82	2.50	71.17	4.15
9.	61 – Craftsmen Training	13.48	0.34	13.10	0.72
10.	65 - Animal Husbandry and Veterinary Services	18.83	0.20	16.54	2.49
11.	71 - Cooperation	6.46	0.40	4.67	2.19
12.	72 - Science, Technology and Environment	4.33	0.50	3.89	0.94
13.	77 - River Navigation	12.54	0.63	12.52	0.65
14.	5 - Prosecution	1.47	0.04	1.11	0.40
<b>Capital (Voted)</b>					
15.	26 – Fire and Emergency Services	1.03	0.14	1.02	0.15
16.	31 - Panchayats	1.96	0.40	0.56	1.80
17.	35 – Higher Education	7.17	0.14	6.92	0.39
18.	Food and Drugs Administration	0.13	0.05	0.09	0.09
19.	65 - Animal Husbandry and Veterinary Services	0.68	0.67	0.44	0.91
	<b>Total</b>	<b>181.45</b>	<b>6.83</b>	<b>169.96</b>	<b>18.32</b>

**APPENDIX – 2.5**

*(Referred to in paragraph 2.3.4)*

**STATEMENT SHOWING CASES WHERE SUPPLEMENTARY PROVISION  
WAS EXCESSIVE**

*(Rupees in crore)*

<b>Sr. No.</b>	<b>Number and name of Grant</b>	<b>Original Provision</b>	<b>Supplementary Provision</b>	<b>Total Provision</b>	<b>Expenditure</b>	<b>Savings</b>
<b>Revenue (Charged)</b>						
1.	1- Legislature Secretariat	0.30	0.15	0.45	0.32	0.13
2.	A1- Raj Bhavan	2.65	0.36	3.01	2.85	0.16
<b>Revenue (Voted)</b>						
3.	2 - General Administration and Coordination	18.07	4.15	22.22	22.07	0.15
4.	6 - Election Office	4.76	3.05	7.81	7.40	0.41
5.	26 – Fire and Emergency Services	6.49	0.63	7.12	6.92	0.20
6.	34 - School Education	281.32	14.25	295.57	292.37	3.20
7.	52 - Labour	8.88	0.51	9.39	9.24	0.15
8.	56 – Information and Publicity	10.60	6.60	17.20	15.35	1.85
9.	57 - Social Welfare	90.95	66.61	157.56	151.10	6.46
10.	64 - Agriculture	24.64	1.00	25.64	24.93	0.71
11.	66 - Fisheries	14.70	1.15	15.85	15.62	0.23
12.	68 - Forests	16.69	3.68	20.37	19.82	0.55
13.	74 - Water Resources	34.73	3.55	38.28	37.04	1.24
<b>Capital (Voted)</b>						
14.	8 - Treasury and Accounts Administration (South Goa)	2.19	13.00	15.19	12.77	2.42
	<b>TOTAL</b>	<b>516.97</b>	<b>118.69</b>	<b>635.66</b>	<b>617.80</b>	<b>17.86</b>

**APPENDIX – 2.6**  
(Referred to in paragraph 2.3.5)

**UNUTILISED PROVISIONS NOT SURRENDERED**

*(Rupees in crore)*

Sr. No.	Grant No.	Total Grant	Total Expenditure	Savings available
<b>Revenue (Voted)</b>				
1.	32 – Finance	3.55	2.44	1.11
<b>Capital (Voted)</b>				
2.	10 – Notary Services	0.76	--	0.76
3.	34 - School Education	12.47	12.05	0.42
4.	62 – Law	1.50	0.52	0.98
	<b>TOTAL</b>	<b>18.28</b>	<b>15.01</b>	<b>3.27</b>

**APPENDIX – 2.7**  
*(Referred to in paragraph 2.3.5)*

**SAVINGS PARTIALLY SURRENDERED**

*(Rupees in crore)*

<b>Sr. No.</b>	<b>Number and Name of Grant</b>	<b>Total Grant</b>	<b>Expenditure</b>	<b>Savings</b>	<b>Savings surrendered</b>	<b>Savings remaining unsundered</b>
<b>Capital (Charged)</b>						
1.	Appropriation Debt Services	205.85	68.30	137.55	36.09	101.46
<b>Revenue (Charged)</b>						
2.	1- Legislature Secretariat	0.45	0.32	0.13	0.02	0.11
3.	Appropriation Debt Services	517.00	466.86	50.14	40.11	10.03
<b>Revenue (Voted)</b>						
4.	8 - Treasury and Accounts Administration (South Goa)	201.85	153.40	48.45	42.57	5.88
5.	23 – Home	1.63	1.15	0.48	0.08	0.40
6.	31 – Panchayats	46.46	39.65	6.81	6.63	0.18
7.	42 – Sports	20.42	18.86	1.56	1.09	0.47
<b>Capital (Voted)</b>						
8.	47 – Goa Medical College and Hospital	10.74	7.46	3.28	3.14	0.14
	<b>TOTAL</b>	<b>1004.40</b>	<b>756.00</b>	<b>248.40</b>	<b>129.73</b>	<b>118.67</b>

### Appendix 3.1

(Referred to in paragraph 3.1.8.2)

#### AVOIDABLE EXTRA BURDEN ON 9315 NON-GENUINE CASES

Categories	Number of non genuine cases	Number deleted	Number of non genuine cases continued	Rs 500 p.m from 2/04 to 10/05 (21 months)	Rs 750 p.m from 11/05 to 3/07 (17 months)	Rs 1000 p.m from 4/07 to 3/08 (12 months)	Total (in rupees)
Doubtful	4584	192	4392	46116000	55998000	52704000	154818000
Migrated	866	0	866	9093000	11041500	10392000	30526500
Husband/ wife	881	349	532	5586000	6783000	6384000	18753000
Expired	1631	1191	440	4620000	5610000	5280000	15510000
Not found	3877	792	3085	32392500	39333750	37020000	108746250
<b>Total</b>	<b>11839</b>	<b>2524</b>	<b>9315</b>	<b>97807500</b>	<b>118766250</b>	<b>111780000</b>	<b>328353750</b>

#### Avoidable extra burden on 3656 cases

Categories	Number of non genuine cases	Deleted	Not deleted	Rs 500 p.m from 2/05 to 10/05 (9 months)	Rs 750 p.m from 11/05 to 3/07 (17 months)	Rs 1000 p.m from 4/07 to 3/08 (12 months)	Total (in rupees)
Doubtful	2011	258	1753	7888500	22350750	21036000	51275250
Migrated	612	96	516	2322000	6579000	6192000	15093000
Husband/ wife	164	88	76	342000	969000	912000	2223000
Expired	1125	1077	48	216000	612000	576000	1404000
Not found	1481	251	1230	5535000	15682500	14760000	35977500
Double	88	55	33	148500	420750	396000	965250
<b>Total</b>	<b>5481</b>	<b>1825</b>	<b>3656</b>	<b>16452000</b>	<b>46614000</b>	<b>43872000</b>	<b>106938000</b>

**APPENDIX 3.2**

*(Referred to in paragraph 3.1.10.1)*

**DETAILS OF ADDITIONAL INTEREST PAID TO LIC OVER NORMAL INTEREST PAYABLE**

*(Amount in Rupees)*

Date of sanction	Number of pensioners	Purchase price payable	1/5 th of purchase price	Interest on balance @ 13% per annum on each installments				Total
				second	third	fourth	fifth	
1-1-2002	1671	95568820	19113764	9939157	7454368	4969579	2484789	24847893
1-2-2002	2131	121716005	24343201	12658465	9493848	6329232	3164616	31646161
1-3-2002	1933	112034895	22406979	11651629	8738722	5825815	2912907	29129073
1-4-2002	5249	306104070	61220814	31834823	23876117	15917412	7958706	79587058
1-5-2002	1213	71750795	14350159	7462083	5596562	3731041	1865521	18655207
1-10-2002	8916	513243985	102648797	53377374	40033031	26688687	13344344	133443436
<b>Total</b>	<b>21113</b>	<b>1220418570</b>	<b>244083714</b>	<b>126923531</b>	<b>95192648</b>	<b>63461766</b>	<b>31730883</b>	<b>317308828</b>

Interest payable in case of regular payment of five installments	31,73,08,828
Interest actually paid	48,64,30,928*
Interest on delayed payment	16,91,22,100

\*

- A Total amount paid to LIC = 1650009244  
 B Less purchase price payable after deleting 1333 cases = 1163578316 (1220418570 – 56840254)  
 C Total interest paid 486430928 (A-B)

**APPENDIX 4.1**  
(Referred to in paragraph 4.3.1)

**STATEMENT SHOWING YEAR-WISE POSITION OF INSPECTION REPORTS AND PARAGRAPHS  
PENDING SETTLEMENT**

Sr. No.	Name of the Department	Up to 2002-03		2003-04		2004-05		2005-06		2006-07		2007-08		Total	
		IR	Para	IR	Para	IR	Para	IR	Para	IR	Para	IR	Para	IR	Para
1	Agriculture Department	1	1	--	--	--	--	2	5	1	2	6	16	10	24
2	Animal Husbandry & Veterinary Services Department	--	--	--	--	--	--	--	--	--	--	3	7	3	7
3	Archives, Archaeology & Museum	--	--	--	--	--	--	--	--	--	--	1	5	1	5
4	Art & Culture Department	--	--	--	--	--	--	1	1	1	3	2	6	4	10
5	Civil Supplies Department	--	--	--	--	--	--	--	--	--	--	1	1	1	1
6	Co-operative Department	--	--	--	--	--	--	--	--	1	3	--	--	1	3
7	Education Department	--	--	--	--	--	--	1	1	1	9	7	13	9	23
8	Finance Department	--	--	1	4	--	--	--	--	1	1	--	--	2	5
9	Fisheries Department	--	--	1	2	--	--	--	--	1	2	1	3	3	7
10	Forest Department	--	--	--	--	--	--	--	--	4	10	3	14	7	24
11	Governor's office, Raj Bhavan	--	--	--	--	--	--	--	--	1	4	--	--	1	4
12	General Administration Department	--	--	--	--	--	--	1	2	1	4	2	10	4	16
13	Housing Department	--	--	--	--	1	3	--	--	1	5	--	--	2	8
14	Health Department	--	--	2	3	--	--	1	2	4	16	6	41	13	62
15	Higher Education	2	2	--	--	1	1	2	4	1	2	2	5	8	14
16	Home Department	--	--	--	--	2	3	--	--	3	3	7	16	12	22
17	Industries Department	--	--	--	--	1	2	1	3	1	1	2	9	5	15
18	Information & Publicity	--	--	--	--	--	--	1	1	--	--	2	8	3	9
19	Inland Water Transport	--	--	--	--	--	--	--	--	1	2	2	2	3	4
20	Irrigation Department	2	2	--	--	1	1	2	4	3	5	5	17	13	29

*Audit Report for the year ended 31 March 2008*

21	Labour Department	--	--	--	--	1	2	--	--	1	1	4	16	6	19
22	Law Department	1	1	--	--	1	1	--	--	1	2	4	6	7	10
23	Legislature Department	--	--	--	--	--	--	1	1	--	--	1	1	2	2
24	Panchayati Raj	--	--	--	--	3	8	2	8	2	11	2	23	9	50
25	Planning Department	2	3	--	--	--	--	1	1	--	--	2	4	5	8
26	Printing & Stationary Dept.	--	--	--	--	--	--	--	--	--	--	1	7	1	7
27	Provedoria Department	--	--	--	--	--	--	--	--	--	--	1	7	1	7
28	Public Works Department	10	13	3	5	4	4	11	31	10	43	10	46	48	142
29	Revenue Department	1	1	--	--	2	3	10	33	9	56	12	86	34	179
30	Rural Development Department	--	--	--	--	1	1	2	4	2	10	--	--	5	15
31	Science Technology & Environment Department	--	--	1	2	1	2	--	--	--	--	--	--	2	4
32	Social Welfare Department	1	1	--	--	1	1	--	--	--	--	3	12	5	14
33	Sports & Youth Affairs	--	--	1	4	--	--	--	--	2	5	--	--	3	9
34	Technical Education	--	--	--	--	1	3	2	2	1	2	5	13	9	20
35	Transport Department	--	--	--	--	1	1	--	--	1	1	--	--	2	2
36	Tourism Department	--	--	1	1	1	2	1	2	--	--	--	--	3	5
37	Urban Development Department	2	2	--	--	1	4	3	10	6	64	8	98	20	178
38	Women & Child Development	--	--	--	--	--	--	--	--	3	11	1	2	4	13
<b>Total</b>		<b>22</b>	<b>26</b>	<b>10</b>	<b>21</b>	<b>24</b>	<b>42</b>	<b>45</b>	<b>115</b>	<b>64</b>	<b>278</b>	<b>106</b>	<b>494</b>	<b>271</b>	<b>976</b>



## APPENDIX 4.2

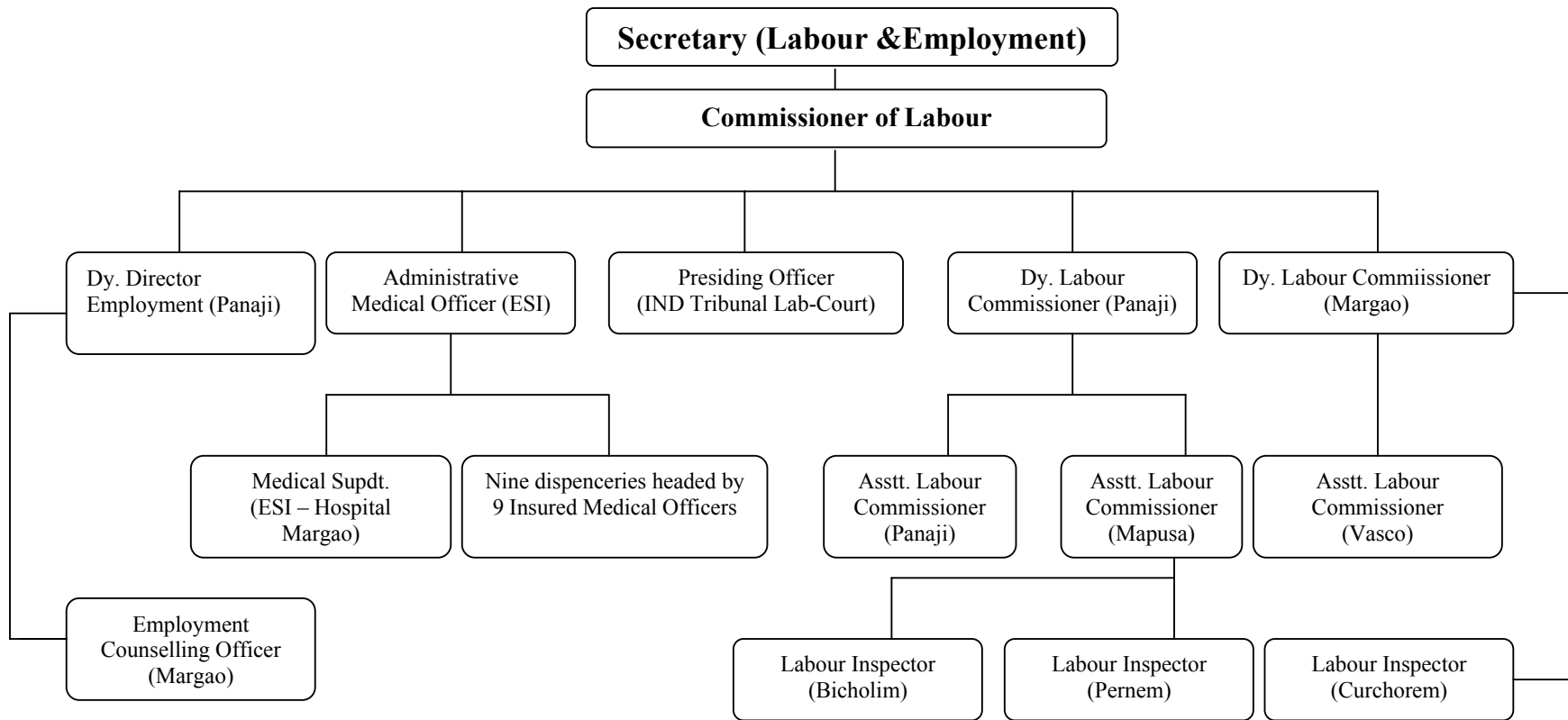
*(Referred to in paragraph 4.3.2)*

### STATEMENT SHOWING NUMBER OF PARAGRAPHS/REVIEWS IN RESPECT OF WHICH GOVERNMENT EXPLANATORY MEMORANDA HAD NOT BEEN RECEIVED

Sr. No.	Name of Department	2003-04	2004-05	2005-06	2006-07	Total
(1)	(2)	(3)	(4)	(5)	(6)	(7)
1	Water Resources	-	-	1	1	2
2	Education	-	1	-	2	3
3	Tourism	-	-	-	1	1
4	Public Works	-	1	4	1	6
5	Finance	-	-	-	2	2
6	Social Welfare	1	-	-	1	2
7	Home	-	3	1	-	4
8	Civil Supplies	-	1	-	-	1
9	Information & Publicity	-	1	1	1	3
10	Rural Development	-	-	1	-	1
11	Women and Child Development	-	-	-	1	1
12	Housing	-	-	-	2	2
13	Town and Country Planning	-	-	-	2	2
<b>Total</b>		<b>1</b>	<b>7</b>	<b>8</b>	<b>14</b>	<b>30</b>

**APPENDIX 5.1**  
*(Referred to in paragraph 5.1.2)*

**ORGANIZATION CHART OF LABOUR AND EMPLOYMENT DEPARTMENT**



## APPENDIX 5.2

*(Referred to in paragraph 5.1.7.1)*

### STATEMENT SHOWING NUMBER OF INSPECTIONS CARRIED OUT DURING THE YEAR 2003-07

Sr. No.	Inspections carried out	2003	2004	2005	2006	2007
1	Shops and Establishment Act	3627	1682	2117	1084	2026
2	Minimum Wages Act	769	1242	935	480	929
3	Payment of Wages Act	75	85	72	20	114
4	Motor Transport Workers Act	26	4	12	23	11
5	Contract Labour Act	321	424	259	106	232
6	Payment of Bonus Act	94	79	134	30	55
7	Equal Remuneration Act	84	125	180	62	224
8	Inter State Migrant Workmen's Act	50	18	03	03	21
9	Child Labour Act	178	225	309	108	1085
10	Labour Welfare Fund Act	292	462	806	217	56
11	Goa Employment Conditions of Services and Retirement Benefit Act 2001	-	683	330	113	351
12	Working journalist and other newspaper Act	02	01	01	-	-
	<b>Total</b>	<b>5518</b>	<b>5030</b>	<b>5158</b>	<b>2246</b>	<b>5104</b>

### APPENDIX 7.1

Statement showing particulars of up to date capital, equity/loans received out of budget and loans outstanding as on 31 March 2008 in respect of Government Companies and Statutory Corporation  
(Referred to in paragraphs 7.1.3, 7.1.4 and 7.1.5)

(Figures in column 3(a) to 4(f) are Rupees in lakh)

Sl. No.	Sector and Name of the Company	Paid up capital as at the end of current year (2007-08)					Equity / Loans received out of budget during the year		Other loans received during the year*	Loans <sup>#</sup> outstanding at the close of 2007-08			Debt-Equity ratio for 2007-08 (previous year) 4(f) / 3(e)
		State Government	Central Government	Holding Company	Others	Total	Equity	Loans		Government	Others	Total	
1	2	3(a)	3(b)	3(c)	3(d)	3(e)	4(a)	4(b)	4(c)	4(d)	4(e)	4(f)	5
<b>A Government Companies</b>													
<b>AGRICULTURE &amp; ALLIED</b>													
1.	Goa Meat Complex Limited	25.00	23.96	--	12.86	61.82	--	--	--	--	--	--	--
2.	Goa State Horticultural Corporation Limited	499.50	--	--	--	499.50	--	--	--	124.00	--	124.00	0.25:1 (0.12:1)
<b>TOTAL</b>		<b>524.50</b>	<b>23.96</b>	<b>--</b>	<b>12.86</b>	<b>561.32</b>	<b>--</b>	<b>--</b>	<b>--</b>	<b>124.00</b>	<b>--</b>	<b>124.00</b>	<b>0.22:1 (0.11:1)</b>
<b>INDUSTRIES</b>													
3.	Goa Auto Accessories Limited	--	--	559.00	--	559.00	--	--	--	--	45.63	45.63	0.08:1 (0.16:1)
4.	Goa Handicrafts, Rural and Small Scale Industries Development Corporation Limited	733.01	17.00	--	--	750.01	100.00	--	--	--	--	--	--
<b>TOTAL</b>		<b>733.01</b>	<b>17.00</b>	<b>559.00</b>	<b>--</b>	<b>1309.01</b>	<b>100.00</b>	<b>--</b>	<b>--</b>	<b>--</b>	<b>45.63</b>	<b>45.63</b>	<b>0.03:1 (0.07:1)</b>

\* Includes bonds, debentures, inter corporate deposits etc.

# Loans outstanding at the close of 2007-08 represents long-term loan only.

1	2	3(a)	3(b)	3(c)	3(d)	3(e)	4(a)	4(b)	4(c)	4(d)	4(e)	4(f)	5
<b>ELECTRONICS</b>													
5.	Goa Electronics Limited	--	--	180.00	--	180.00	--	--	--	--	987.46	987.46	5.49:1 (5.59:1)
	<b>TOTAL</b>	--	--	<b>180.00</b>	--	<b>180.00</b>	--	--	--	--	<b>987.46</b>	<b>987.46</b>	<b>5.49:1 (5.59:1)</b>
<b>FOREST</b>													
6.	Goa Forest Development Corporation Limited	268.91	--	--	--	268.91	18.91	--	--	--	--	--	--
	<b>TOTAL</b>	<b>268.91</b>	--	--	--	<b>268.91</b>	<b>18.91</b>	--	--	--	--	--	--
<b>AREA DEVELOPMENT</b>													
7.	EDC Limited	5620.26 ▲1000.00	--	--	1472.22	7092.48 ▲1000.00	1500.00	--	--	--	3500.00	3500.00	0.43:1 (0.82:1)
8.	Goa State Infrastructure Development Corporation Limited	305.00	--	5.00	--	310.00	--	--	4770.00	--	13019.38	13019.38	42.00:1 (46.95:1)
9.	Info Tech Corporation of Goa Limited	1314.56	--	318.90	--	1633.46	--	--	--	--	--	--	--
10.	Sewage and Infrastructural Development Corporation Limited	480.00	--	--	5.00	485.00	280.00	--	--	--	--	--	--
	<b>TOTAL</b>	<b>7719.82 ▲ 1000.00</b>	--	<b>323.90</b>	<b>1477.22</b>	<b>9520.94 ▲ 1000.00</b>	<b>1780.00</b>	--	<b>4770.00</b>	--	<b>16519.38</b>	<b>16519.38</b>	<b>1.57:1 (2.28:1)</b>
<b>DEVELOPMENT OF ECONOMICALLY WEAKER SECTIONS</b>													
11.	Goa State Scheduled Caste and Other Backward Classes Finance and Development Corporation Limited	184.67	158.21	--	--	342.88	5.00	--	50.04	--	244.79	244.79	0.71:1 (0.74:1)
12.	Goa State Scheduled Tribes Finance and Development Corporation Limited	350.00	--	--	--	350.00	100.00	--	--	25.00	--	25.00	0.07:1 (0.10:1)
	<b>TOTAL</b>	<b>534.67</b>	<b>158.21</b>	--	--	<b>692.88</b>	<b>105.00</b>	--	<b>50.04</b>	<b>25.00</b>	<b>244.79</b>	<b>269.79</b>	<b>0.39:1 (0.47:1)</b>

1	2	3(a)	3(b)	3(c)	3(d)	3(e)	4(a)	4(b)	4(c)	4(d)	4(e)	4(f)	5
<b>TOURISM</b>													
13.	Goa Tourism Development Corporation Limited	2035.39	--	--	--	2035.39	--	--	--	100.00	--	100.00	0.05:1 (0.05:1)
	<b>TOTAL</b>	<b>2035.39</b>	<b>--</b>	<b>--</b>	<b>--</b>	<b>2035.39</b>	<b>--</b>	<b>--</b>	<b>--</b>	<b>100.00</b>	<b>--</b>	<b>100.00</b>	<b>0.05:1 (0.05:1)</b>
<b>DRUGS, CHEMICALS AND PHARMACEUTICALS</b>													
14.	Goa Antibiotics and Pharmaceuticals Limited	--	--	1902.00	--	1902.00	--	--	--	--	700.00	700.00	0.37:1 (0.37:1)
	<b>TOTAL</b>	<b>--</b>	<b>--</b>	<b>1902.00</b>	<b>--</b>	<b>1902.00</b>	<b>--</b>	<b>--</b>	<b>--</b>	<b>--</b>	<b>700.00</b>	<b>700.00</b>	<b>0.37:1 (0.37:1)</b>
<b>TRANSPORT</b>													
15.	Kadamba Transport Corporation Limited	2890.96	--	--	--	2890.96	600.00	--	--	--	2908.09	2908.09	0.68:1 (0.93:1)
		♣ 1368.37				♣ 1368.37							
	<b>TOTAL</b>	<b>2890.96</b>	<b>--</b>	<b>--</b>	<b>--</b>	<b>2890.96</b>	<b>600.00</b>	<b>--</b>	<b>--</b>	<b>--</b>	<b>2908.09</b>	<b>2908.09</b>	<b>0.68:1 (0.93:1)</b>
		♣ 1368.37				♣ 1368.37							
	<b>TOTAL - A</b>	<b>14707.26</b>	<b>199.17</b>	<b>2964.90</b>	<b>1490.08</b>	<b>19361.41</b>	<b>2603.91</b>	<b>--</b>	<b>4820.04</b>	<b>249.00</b>	<b>21405.35</b>	<b>21654.35</b>	<b>0.99:1 (1.33:1)</b>
		♣ 2368.37				♣ 2368.37							
<b>B STATUTORY CORPORATIONS</b>													
1.	Goa Industrial Development Corporation	1802.18	1000.00	--	--	2802.18	--	--	--	--	--	--	--
2	Goa Information Technology Development Corporation <sup>⊗</sup>	--	--	--	--	--	--	--	--	--	--	--	--
	<b>TOTAL - B</b>	<b>1802.18</b>	<b>1000.00</b>	<b>--</b>	<b>--</b>	<b>2802.18</b>	<b>--</b>	<b>--</b>	<b>--</b>	<b>--</b>	<b>--</b>	<b>--</b>	<b>--</b>
	<b>TOTAL - A + B</b>	<b>16509.44</b>	<b>1199.17</b>	<b>2964.90</b>	<b>1490.08</b>	<b>22163.59</b>	<b>2603.91</b>	<b>--</b>	<b>4820.04</b>	<b>249.00</b>	<b>21405.35</b>	<b>21654.35</b>	<b>0.88:1 (1.16:1)</b>
		♣ 2368.37				♣ 2368.37							

Note: 1. Figures in brackets represent figures for previous years.

2. Except in respect of companies which finalised their accounts for 2006-07, figures are provisional and as given by companies / corporation.

3. Investment by way of equity and share application money in working PSUs by State Government is Rs 187.78 crore as per data furnished by the PSUs (Column 3(a)); whereas the amount as per Finance Accounts 2007-08 is Rs 167.19 crore. The difference is under reconciliation.

<sup>⊗</sup> No investment by Government till 31 March 2008 and information on investment by 'Others' was not available; Corporation was yet to start the activities.

♣ Share Application Money

**APPENDIX 7.2**

**Summarised financial results of Government companies and Statutory Corporation for the latest years for which accounts were finalised**

*(Referred to in paragraphs 7.1.6, 7.1.7, 7.1.8 and 7.1.11)*

*(Figures in columns 7 to 12 and 15 are Rupees in lakh)*

Sl. No.	Sector and Name of the Company	Name of Department	Year of Incorporation	Period of accounts	Year in which finalised	Net Profit / loss (-)	Net Impact of Audit comments	Paid up capital	Accumulated Profit / Loss (-)	Capital employed	Total Return on Capital employed	Percentage of total return on capital employed	Arrears of accounts in terms of years	Turn-over	Man power
1	2	3	4	5	6	7	8	9	10	11	12	13	14	15	16
<b>A WORKING GOVERNMENT COMPANIES</b>															
<b>AGRICULTURE &amp; ALLIED</b>															
1.	Goa Meat Complex Limited	Animal Husbandry	1971	2006-07	2007-08	-81.11		61.82	215.77	609.50	-81.11	-13.31	1	127.67	74
2.	Goa State Horticultural Corporation Limited	Agriculture	1993	2004-05	2006-07	-19.04		496.50	-126.01	498.39	-19.04	-3.82	3	96.59	35
<b>TOTAL</b>						<b>-100.15</b>		<b>558.32</b>	<b>89.76</b>	<b>1107.89</b>	<b>-100.15</b>			<b>224.26</b>	<b>109</b>
<b>INDUSTRIES</b>															
3.	Goa Auto Accessories Limited	Finance	1976	2007-08	2008-09	-24.50		559.00	-524.01	242.94	-11.06	-4.55	--	832.78	84
4.	Goa Handicrafts, Rural and Small Scale Industries Development Corporation Limited	Industries and Labour	1980	2007-08	2008-09	48.54		750.01	26.41	1011.21	48.54	4.80	--	3354.92	62
<b>TOTAL</b>						<b>2404</b>		<b>1309.01</b>	<b>-497.60</b>	<b>1254.15</b>	<b>37.48</b>			<b>4187.70</b>	<b>146</b>
<b>ELECTRONICS</b>															
5.	Goa Electronics Limited	Finance	1976	2007-08	2008-09	74.81		180.00	-1977.63	-778.02	91.01	--	--	402.52	9
<b>TOTAL</b>						<b>74.81</b>		<b>180.00</b>	<b>-1977.63</b>	<b>-778.02</b>	<b>91.01</b>	<b>-</b>		<b>402.52</b>	<b>9</b>

1	2	3	4	5	6	7	8	9	10	11	12	13	14	15	16
<b>FOREST</b>															
6.	Goa Forest Development Corporation Limited	Forest	1997	2006-07	2007-08	-23.42	2.75 Over-statement of Loss	268.91	381.47	739.41	-23.42	-3.17	1	168.42	91
	<b>TOTAL</b>					<b>-23.42</b>		<b>268.91</b>	<b>381.47</b>	<b>739.41</b>	<b>-23.42</b>	<b>--</b>		<b>168.42</b>	<b>91</b>
<b>AREA DEVELOPMENT</b>															
7.	EDC Limited	Finance	1975	2006-07	2007-08	4818.49	-	6592.48	-6699.52	29114.33	6292.56	23.37	1	9891.83	94
8.	Goa State Infrastructure Development Corporation Limited	Finance	2001	2006-07	2007-08	213.42	4.25 Under statement of Profit)	310.00	234.26	15307.14	1686.65	11.02	1	10294.06	60
9.	Info Tech Corporation of Goa Limited	Information Technology	1990	2005-06	2007-08	-39.03		1633.46	-195.56	1449.19	-39.03	-2.69	2	230.00	43
10.	Sewage and Infrastructural Development Corporation Limited	Public Works	2001	2002-03	2005-06	--		205.00	--	--	--	--	5	--	14
	<b>TOTAL</b>					<b>4992.88</b>		<b>8740.94</b>	<b>-6660.82</b>	<b>45870.66</b>	<b>7940.18</b>			<b>20415.89</b>	<b>211</b>



1	2	3	4	5	6	7	8	9	10	11	12	13	14	15	16
<b>DEVELOPMENT OF ECONOMICALLY WEAKER SECTIONS</b>															
11.	Goa State Scheduled Caste and Other Backward Classes Finance and Development Corporation Limited	Social Welfare	1990	2000-01	2006-07	-3.07		226.76	-15.61	89.01	3.97	1.02	7	26.93	13
12.	Goa State Scheduled Tribes Finance and Development Corporation Limited	Social Welfare	2004	2006-07	2008-09	-37.29		250.00	-54.50	250.00	-37.29	-12.81	1	14.06	7
<b>TOTAL</b>						<b>-40.36</b>		<b>476.76</b>	<b>-70.11</b>	<b>339.01</b>	<b>-33.32</b>			<b>40.99</b>	<b>20</b>
<b>TOURISM</b>															
13.	Goa Tourism Development Corporation Limited	Tourism	1982	2006-07	2007-08	23.21		2035.39	-68.00	2126.20	28.07	1.32	1	1477.97	366
<b>TOTAL</b>						<b>23.21</b>		<b>2035.39</b>	<b>-68.00</b>	<b>2126.20</b>	<b>28.07</b>			<b>1477.97</b>	<b>366</b>
<b>DRUGS, CHEMICALS AND PHARMACEUTICALS</b>															
14.	Goa Antibiotics and Pharmaceuticals Limited	Finance	1980	2006-07	2007-08	-213.13		1902.00	-2685.59	688.13	-104.47	-15.18	1	1093.62	225
<b>TOTAL</b>						<b>-213.13</b>		<b>1902.00</b>	<b>-2685.59</b>	<b>688.13</b>	<b>-104.47</b>			<b>1093.62</b>	<b>225</b>

1	2	3	4	5	6	7	8	9	10	11	12	13	14	15	16
<b>TRANSPORT</b>															
15.	Kadamba Transport Corporation Limited	Transport	1980	2006-07	2008-09	-556.35		3659.33	-7146.75	1785.17	-246.90	-8.27	1	4758.77	1914
	<b>TOTAL</b>					<b>-556.35</b>		<b>3659.33</b>	<b>-7146.75</b>	<b>1785.17</b>	<b>-246.90</b>			<b>4758.77</b>	<b>1914</b>
	<b>TOTAL – A</b>					<b>4181.53</b>		<b>19130.66</b>	<b>-18635.27</b>	<b>53132.60</b>	<b>7588.48</b>			<b>32770.14</b>	<b>3091</b>
<b>B. STATUTORY CORPORATIONS</b>															
1.	Goa Industrial Development Corporation	Industries	1966	2006-07	2008-09	1080.27	57.83 (Under-statement of loss)	2802.18	1465.65	3796.40	1080.27	28.46	1	2316.31	225
2	Goa Information Technology Development Corporation	Information Technology	2006	First accounts awaited											
	<b>TOTAL - B</b>					<b>1080.27</b>		<b>2802.18</b>	<b>1465.65</b>	<b>3796.40</b>	<b>1080.27</b>			<b>2316.31</b>	<b>225</b>
	<b>TOTAL-A + B</b>					<b>5261.80</b>		<b>21932.84</b>	<b>-17169.62</b>	<b>56929.00</b>	<b>8668.75</b>			<b>35086.45</b>	<b>3316</b>

Note: Capital employed represents net fixed assets (including capital work-in-progress) plus working capital except in case of finance companies where the capital employed is worked out as a mean of the aggregate of the opening and closing balances of (i) paid-up capital, (ii) bonds and debentures, (iii) free reserves and surplus, (iv) borrowings (including refinance) and deposits.

**APPENDIX 7.3**

**Statement showing grants and subsidy received/receivable, guarantees received, waiver of dues, loans on which moratorium allowed and loans converted into equity during the year and guarantees outstanding at the end of March 2008**

*(Referred to in paragraph 7.1.5)*

*(Figures in columns 3(a) to 7 are Rupees in lakh)*

Sl. No.	Name of the Company	Central Government		State Government		Others		Total		Guarantees received during the year and outstanding at the end of the year					Waiver of dues during the year				Loans on which moratorium allowed	Loans converted into equity during the year
		G	S	G	S	G	S	G	S	Cash credit from banks	Loans from other source	Letters of credit opened by banks in respect of imports	Payment obligations under agreement with foreign consultants or contracts	Total	Loans repayment written off	Interest waived	Penal interest waived	Total		
1	2	3(a)		3(b)		3(c)		3(d)		4(a)	4(b)	4(c)	4(d)	4(e)	5(a)	5(b)	5(c)	5(d)	6	7
1.	Goa State Infrastructure Development Corporation Limited	-	-	7600.00	-	-	-	7600.00	-	-	(85.32)	-	-	(85.32)	-	-	-	-	-	-
2.	EDC Limited	-	-	-	-	-	-	-	-	(2400.00)	(3220.00)	-	-	(5620.00)	-	-	-	-	-	-
3.	Kadamba Transport Corporation Limited	-	-	-	800.00	-	-	800.00	-	(30.00)	(3000.00)	-	-	(3030.00)	-	-	-	-	-	-
4.	Goa Meat Complex Limited	-	-	132.00	-	-	-	132.00	-	-	-	-	-	-	-	-	-	-	-	-
5.	Goa State Horticultural Corporation Limited	-	-	35.00	-	-	-	35.00	-	-	-	-	-	-	-	-	-	-	-	-
6.	Goa Handicrafts, Rural and Small Scale Industries Development Corporation Limited	-	-	65.00	-	-	-	65.00	-	-	-	-	-	-	-	-	-	-	-	-
7.	Goa Forest Development Corporation Limited	-	-	-	-	16.32	-	16.32	-	-	-	-	-	-	-	-	-	-	-	-
	<b>Total</b>	-	-	<b>7832.00</b>	<b>800.00</b>	-	<b>16.32</b>	<b>7832.00</b>	<b>816.32</b>	<b>(2430.00)</b>	<b>(6305.32)</b>	-	-	<b>(8735.32)</b>	-	-	-	-	-	-

G - Grants S - Subsidy

Note: Figures in brackets indicate guarantees outstanding at the end of the year.

**APPENDIX 7.4**

**Statement showing investments made by State Government in PSUs whose accounts are in arrears as on 30 September 2008  
(Referred to in paragraph 7.1.6)**

(Amount: Rs. in Lakh)

Sl. No	Name of PSU	Year upto which Accounts finalised	Paid up capital as per latest finalised accounts	Investment made by State Government during the years for which accounts are in arrears				
				Year	Equity	Loans	Grants	Subsidy
1.	2.	3.	4.	5.	6.	7.	8.	9.
	<b>Working Companies</b>							
1.	Goa State Scheduled Caste and Other Backward Classes Finance and Development Corporation Limited	2000-01	226.76	2001-02	5.00	148.82	-	-
				2002-03	31.67	-	-	-
				2003-04	5.00	-	-	-
				2004-05	5.00	-	-	0.29
				2005-06	5.00	-	-	0.26
				2006-07	5.00	-	-	-
				2007-08	5.00	-	-	-
2.	Sewage and Infrastructural Development Corporation Limited	2002-03	205.00	2007-08	280.00	-	-	-
3.	Goa State Horticultural Corporation Limited	2004-05	496.50	2005-06	3.00	-	-	-
				2006-07	-	-	50.00	-
				2007-08	-	-	35.00	-
4.	Goa Meat Complex Limited	2006-07	61.82	2007-08	-	-	132.00	-
5.	Goa Forest Development Corporation Limited	2006-07	268.91	2007-08	18.91	-	-	-
6.	EDC Limited	2006-07	6592.48	2007-08	1500.00	-	-	-
7.	Goa State Infrastructure Development Corporation Limited	2006-07	310.00	2007-08	-	-	7600.00	-
1.	2.	3.	4.	5.	6.	7.	8.	9.
8.	Goa State Scheduled Tribes Finance and Development Corporation Limited	2006-07	250.00	2007-08	100.00	-	-	-
9.	Kadamba Transport Corporation Limited	2006-07	3659.33	2007-08	600.00	-	-	800.00
	<b>Total</b>		<b>12070.80</b>		<b>2563.58</b>	<b>148.82</b>	<b>7817.00</b>	<b>800.55</b>

## APPENDIX 7.5

## Statement showing the financial position and working results of the Statutory Corporation during the three years 2004-05 to 2006-07

(Referred to in paragraph 7.1.7)

## Goa Industrial Development Corporation

(Rupees in crore)

<b>A. Financial Position</b>				
<b>Particulars</b>		<b>2004-05</b>	<b>2005-06</b>	<b>2006-07</b>
<b>LIABILITIES</b>				
A	Amount payable to Government	28.02	28.02	28.02
B	Reserves and Surplus	4.98	3.89	14.66
C	Deposits			
i	From Govt. for Schemes undertaken and/or on behalf of Govt. and others	0.01	0.01	0.01
ii	From private parties (for lease of plots etc.)	5.83	6.75	8.80
D	Current Liabilities, provisions and refunds	128.28	157.76	318.87
<b>TOTAL</b>		<b>167.12</b>	<b>196.43</b>	<b>370.36</b>
<b>ASSETS</b>				
A	Fixed Assets	4.83	5.51	5.76
	<u>Less</u> : Depreciation (Cumulative)	3.60	3.96	4.37
	Net Fixed Assets	1.23	1.55	1.39
B	Work in progress	12.18	12.35	7.28
C	Development of Industrial areas / Estates	97.72	104.54	114.02
	<u>Less</u> : Depreciation	23.74	26.84	30.65
	Net development of Industrial areas/ Estates	73.98	77.70	83.37
D	Investments	3.87	4.24	4.71
E	Cash at Bank / in hand	56.94	73.07	150.26
F	Other current assets, loans and advances	18.92	27.52	123.35
<b>TOTAL</b>		<b>167.12</b>	<b>196.43</b>	<b>370.36</b>
	Capital employed*	29.13	27.67	37.96
	Net worth*	33.00	31.91	42.68

\* Capital employed represents Net Fixed Assets plus capital work-in progress plus working capital.

\* Net worth represents share capital (Amount payable to Government is treated as share capital) plus reserves and surplus.

(Rupees in crore)

<b>B.WORKING RESULTS</b>				
		<b>2004-05</b>	<b>2005-06</b>	<b>2006-07</b>
<b>A</b>	<b>Income</b>			
	a. Rent	2.19	3.06	4.59
	b. Interest	5.50	4.66	15.98
	c. Other charges	0.77	1.75	2.59
	<b>Total</b>	<b>8.46</b>	<b>9.47</b>	<b>23.16</b>
<b>B</b>	<b>Expenditure</b>			
	a. Executive / Administrative	4.51	5.25	6.52
	b. Depreciation	3.04	3.68	4.22
	c. Maintenance and repairs	2.34	1.63	1.62
	<b>Total</b>	<b>9.89</b>	<b>10.56</b>	<b>12.36</b>
	Surplus (+) /Deficit (-)	(-) 1.43	(-) 1.09	(+)10.80
	Prior period Adjustments (Dr.)	--	--	(-) 0.03
	Net surplus (+) / Deficit (-) after prior period adjustment.	(-) 1.43	(-) 1.09	10.77
	Total interest charged to Income and Expenditure account.	--	--	--
	Accumulated surplus	4.98	3.89	14.66
	Return on capital employed <sup>@</sup>	(-) 1.43	(-) 1.08	10.77
	Percentage of return on capital employed	--	--	28.36

<sup>@</sup> Return on capital employed represents net surplus after prior period adjustments plus total interest charges to Income and Expenditure Account.

## APPENDIX – 7.6

### Statement showing the department wise outstanding Inspection Reports (IRs)

*(Referred to in paragraph 7.1.23)*

Sl. No.	Name of the Department	No. of PSUs	No. of outstanding Inspection reports	No. of outstanding paragraphs	Years from which paragraphs outstanding
1.	Industries	1	2	12	2002-04
2.	Agriculture	1	1	1	2004-06
3.	Social Welfare	1	1	4	2003-05
4.	Finance	5	7	36	2001-02
5.	Transport	1	1	3	2004-05
6.	Information Technology	1	1	4	2004-06
7.	Electricity	1*	12	74	2004-05
8.	River Navigation Department	1	1	5	2007-08
9.	Statutory Corporation	1	2	9	2003-04
	<b>Total</b>	<b>13</b>	<b>28</b>	<b>148</b>	

\* Includes Inspection Reports and Paras in respect of 11 divisions

## APPENDIX 7.7

### Summarised financial results of Departmentally managed commercial undertakings as per their latest proforma accounts

*(Referred to in Paragraph 7.1.24)*

#### I. Electricity Department

Sl. No.	Particulars	Year of commencement: 1962-63		
		Period of accounts		
		2003-04	2004-05	2005-06
		<i>(Rupees in lakh)</i>		
1	Government capital	34788.65	43569.24	53696.88
2	Block assets at depreciated cost	16397.92	16136.00	17263.90
3	Cumulative depreciation	5403.60	6323.11	7456.21
4	Net loss (-) / Net profit (+)	(+)18706.55	(+)15580.80	(+)9442.55
5	Interest on capital	685.09	–	–
6	Total returns (5 + 4)	19391.64	(+)15580.80	(+)9442.55
7	Percentage of returns on mean capital	60.13	39.77	19.41

#### II. River Navigation Department

Sl. No.	Particulars	Year of commencement: 1965-66		
		Period of accounts		
		2001-02	2002-03	2003-04
		<i>(Rupees in lakh)</i>		
1	Government capital	7452.44	8343.55	9257.46
2	Block assets at depreciated cost	775.13	827.75	879.61
3	Depreciation	87.75	92.84	98.36
4	Net loss (-) / Net profit (+)	(-) 1004.10	(-) 905.71	(-) 937.00
5	Interest on capital	37.26	38.83	39.91
6	Total returns (5 + 4)	(-) 966.84	(-) 866.88	(-) 897.09
7	Percentage of returns on mean capital	Nil	Nil	Nil



## APPENDIX 7.8

**Financial Position of Goa Industrial Development Corporation**  
(Referred to in Paragraph 7.2.24)

(Rupees in crore)

	Particulars	2003-04	2004-05	2005-06	2006-07	2007-08*
<b>LIABILITIES</b>						
A	Amount payable to Government	27.64	28.02	28.02	28.02	28.02
B	Reserves and Surplus	6.41	4.98	3.89	14.66	37.90
C	Deposits					
i	From Govt. for Schemes undertaken and/or on behalf of Govt. and others	0.01	0.01	0.01	0.01	0.01
ii	From private parties (for lease of plots etc)	5.86	5.83	6.75	8.80	8.94
D	Current Liabilities, provisions and refunds	116.38	128.28	157.76	318.87	335.37
	<b>TOTAL</b>	<b>156.30</b>	<b>167.12</b>	<b>196.43</b>	<b>370.36</b>	<b>410.24</b>
<b>ASSETS</b>						
A	Fixed Assets	4.25	4.83	5.51	5.76	7.22
	Less : Depreciation (Cumulative)	3.35	3.60	3.96	4.37	4.77
	Net Fixed Assets	0.90	1.23	1.55	1.39	2.45
B	Work in progress	10.71	12.18	12.35	7.28	11.09
C	Development of Industrial areas/Estates	91.06	97.72	104.54	114.02	136.53
	Less : Depreciation	21.02	23.74	26.84	30.65	34.80
	Net development of Industrial areas/ Estates	70.04	73.98	77.70	83.37	101.73
D	Investments	3.33	3.87	4.24	4.71	6.55
E	Cash at Bank / in hand	51.32	56.94	73.07	150.26	196.63
F	Other current assets, loans and advances	20.00	18.92	27.52	123.35	91.79
	<b>TOTAL</b>	<b>156.30</b>	<b>167.12</b>	<b>196.43</b>	<b>370.36</b>	<b>410.24</b>
	Capital employed*	30.72	29.13	27.67	37.96	59.38
	Net worth*	34.05	33.00	31.91	42.68	65.92

\* Provisional

\* Capital employed represents Net Fixed Assets plus capital work-in progress plus net development cost of industrial areas plus working capital.

\* Net worth represents share capital (Amount payable to Government is treated as share capital) plus reserves and surplus.

## APPENDIX 7.9

### Working Results of Goa Industrial Development Corporation

(Referred to in Paragraph 7.2.25)

(Rupees in crore)

	Particulars	2003-04	2004-05	2005-06	2006-07	2007-08*
<b>A</b>	<b>INCOME</b>					
	a. Rent	2.04	2.19	3.06	4.59	4.40
	b. Interest	5.12	5.50	4.66	15.98	29.74
	c. Other charges	1.38	0.77	1.75	2.59	2.31
	<b>Total</b>	<b>8.54</b>	<b>8.46</b>	<b>9.47</b>	<b>23.16</b>	<b>36.45</b>
<b>B</b>	<b>EXPENDITURE</b>					
	a. Executive/Administrative	6.00	4.51	5.25	6.52	6.60
	b. Depreciation	2.66	3.04	3.68	4.22	4.54
	c. Maintenance and repairs	0.20	0.22	0.26	0.41	0.70
	d. Water Supply & Electricity charges	2.41	2.12	1.37	1.21	1.27
	<b>Total</b>	<b>11.27</b>	<b>9.89</b>	<b>10.56</b>	<b>12.36</b>	<b>13.11</b>
	Surplus / Deficit (-)	<b>-2.73</b>	<b>-1.43</b>	<b>-1.09</b>	<b>10.80</b>	<b>23.34</b>
	Net Surplus / Deficit (-) after prior period adjustment	-2.73	-1.43	-1.09	10.77	23.24
	<b>Accumulated Surplus</b>	<b>6.41</b>	<b>4.98</b>	<b>3.89</b>	<b>14.66</b>	<b>37.90</b>

\* Provisional

## APPENDIX 7.10

**Instances of other items discussed with permission of Chairman without circulating agenda notes in advance (Goa Industrial Development Corporation)**

*(Referred to in Paragraph 7.2.33)*

Board Meeting No	Date	Addl. Item No.	Resolution no.	Subject
282	01/08/05	3	60/2005	Allotment of land to GCCI at concessional rate
284	22/11/05	1	96/2005	To surrender 50,000 sqm land in favour of Village Panchayat Verna
284	22/11/05	3	98/2005	To allot 40,000 sqm land to Goa Formulation Limited at reduced rate.
285	07/02/06	6	18/2006	To allot 75,475 sqm land to CIPLA as per formula for fixing rate for special acquisition
286	28/03/06	10	43/2006	Allotment of fourth floor of the office building to GSIA at concessional rate
290	28/09/06	3		Deferment of revision of lease rent
292	06/12/06	6	151/2006	To accept rate of interest at rate of six <i>per cent</i> instead of 15 <i>per cent</i> from comunidade of Nagao on the excess payment made to them
295	09/03/07	4	58/2007	To allot open area and area provided for road to four SEZs at Rs 100 per sqm
297	04/10/07	1	102/2007	Decided for inter corporate deposit of Rs 20 crore with GSIDC
301	25/04/08	8	77/2008	To make available Rs 10 crore to KTC by hypothecating FD receipt