

Annexure - 1

**Statement of particulars of up-to-date paid-up capital, budgetary outgo, loans given out of budget and loans outstanding as on
31 March 2007 in respect of Government companies and Statutory corporations
(Figures in brackets indicate share application money pending allotment)
(Referred to in paragraphs 1.3, 1.4, 1.5 & 1.16)**

(Figures in column 3(a) to 4(g) are Rupees in lakh)

Sl. No.	Sector and name of the company.	Paid up capital at the end of the current year.					Equity /loans received out of budget during the year.		Other loans received during the year.	Loans outstanding at the close of 2006-07.				Debt equity ratio for 2006-07 (Previous year) 4(g)/3(e)
		State Govt.	Central Govt.	Holding Companies	Others	Total	Equity	Loans		State Govt.	Central Govt.	Others.	Total.	
1	2	3(a)	3(b)	3(c)	3(d)	3(e)	4(a)	4(b)	4(c)	4(d)	4(e)	4(f)	4(g)	5
A	Working Companies													
	Agriculture and allied													
1.	Bihar Rajya Beej Nigam Ltd.	162.46 (65.20)		---	138.94 (4.24)	301.40 (69.44)	--	--	--	2,792.55	--	--	2,792.55	7.53:1 (7.53:1)
2.	Bihar Rajya Matasya Vikas Nigam Ltd.	174.75 (125.25)	---	---	---	174.75 (125.25)	--	49.28	--	263.12	2.50	--	265.62	0.89:1 (0.72:1)
	Sector-wise total	337.21 (190.45)		---	138.94 (4.24)	476.15 (194.69)	--	49.28	--	3,055.67	2.50	--	3,058.17	4.56:1 (4.48:1)
	Electronics													
3	Bihar State Electronics Development Corporation Ltd.	407.77 (159.14)	---	---	---	407.77 (159.14)	--	--	--	593.48	--	--	593.48	1.05:1 (1.05:1)
	Sector-wise total	407.77 (159.14)		---	---	407.77 (159.14)	--	--	--	593.48	--	--	593.48	1.05:1 (1.05:1)
	Forest													
4	Bihar State Forest Development Corporation Limited	175.08	54.00	---	---	229.08	--	--	--	--	--	--	--	--
	Sector wise total	175.08	54.00	---	---	229.08	--	--	--	--	--	--	--	--
	Mining													
5	Bihar State Mineral Development Corporation Ltd.	997.35	---	---	---	997.35	--	--	--	--	--	--	--	--
	Sector wise total	997.35	---	---	---	997.35	--	--	--	--	--	--	--	--
	Construction													
6	Bihar Police Building Construction Corporation Ltd.	10.00	---	---	---	10.00	--	--	--	42.90	--	--	42.90	4.29:1 (4.29:1)
7	Bihar Rajya Pul Nirman Nigam Ltd.	350.00	---	---	---	350.00	--	--	--	--	--	--	--	--
	Sector wise total	360.00	---	---	---	360.00	--	--	--	42.90	--	--	42.90	4.29:1 (4.29:1)
	Development of Economically Weaker Section													
8	Bihar State Minorities Finance Corporation Ltd.	475.00 (420.00)	---	---	900.04	1,375.04 (420.00)	420.00	--	--	--	--	2,118.11	2,118.11	1.18:1 (1.80:1)

Audit Report (Commercial) for the year ended 31 March 2007

Sl. No.	Sector and name of the company.	Paid up capital at the end of the current year.					Equity /loans received out of budget during the year.		Other loans received during the year.	Loans outstanding at the close of 2006-07.				Debt equity ratio for 2006-07 (Previous year) 4(g)/3(e)
		State Govt.	Central Govt.	Holding Companies	Others	Total	Equity	Loans		State Govt.	Central Govt.	Others.	Total.	
1	2	3(a)	3(b)	3(c)	3(d)	3(e)	4(a)	4(b)	4(c)	4(d)	4(e)	4(f)	4(g)	5
9	Bihar State Backward Classes Finance & Development Corporation Ltd.	1,336.00	---	---	---	1,336.00	---	---	47.50	---	1,879.13	---	1,879.13	1.41:1 (1.37:1)
	Sector wise total	1,811.00 (420.00)	---	---	900.04	2,711.04 (420.00)	420.00	---	47.50	---	1,879.13	2,118.11	3,997.24	1.28:1 (1.57:1)
	Public Distribution													
10	Bihar State Food & Civil Supplies Corporation Ltd.	526.58	---	---	---	526.58	---	---	---	11,864.01	194.06	---	12,058.07	22.9:1 (22.9:1)
	Sector wise total	526.58	---	---	---	526.58	---	---	---	11,864.01	194.06	---	12,058.07	22.9:1 (22.9:1)
	Tourism													
11	Bihar State Tourism Development Corporation Ltd.	500.00	---	---	---	500.00	---	---	---	---	---	---	---	---
	Sector wise total	500.00	---	---	---	500.00	---	---	---	---	---	---	---	---
	Power													
12	Bihar State Hydro Electric Power corporation Ltd.	9,904.00	---	---	---	9,904.00	---	5,059.60	498.00	15,698.84	---	3,138.00	18,836.84	1.90:1 (1.34:1)
13	Tenughat Vidyut Nigam Ltd.	10,000.00	---	---	---	10,000.00	---	---	---	60,889.00	---	4,145.00	65,034.00	6.5:1 (6.5:1)
	Sector wise total	19,904.00	---	---	---	19,904.00	---	5,059.60	498.00	76,587.84	---	7,283.00	83,870.84	4.21:1 (3.93:1)
	Financing													
14	Bihar State Credit & Investment Corporation Ltd.	1,500.00 (12.35)	---	---	---	1,500.00 (12.35)	---	---	---	2,047.34	---	3,811.58	5,858.92	3.87:1 (3.93:1)
	Sector wise total	1,500.00 (12.35)	---	---	---	1,500.00 (12.35)	---	---	---	2,047.34	---	3,811.58	5,858.92	3.87:1 (3.93:1)
	Miscellaneous Sector													
15	Bihar State Text- Book Publishing Corporation Ltd.*	35.75	---	---	11.92	47.67	---	---	585.41	---	---	585.41	585.41	12.28:1
16	Bihar State Film Development and Finance Corporation Ltd.	100.00	---	---	---	100.00	---	---	---	14.80	---	---	14.80	0.15:1 (0.15:1)
17	Bihar State Beverages Corporation Ltd.	500.00	---	---	---	500.00	500.00	---	---	---	---	---	---	---
	Sector wise total	635.75	---	---	11.92	647.67	500.00	---	585.41	14.80	---	585.41	600.21	0.93:1 (0.1:1)
	TOTAL (A)	27,154.74 (781.94)	54.00		1,050.90 (4.24)	28,259.64 (786.18)	920.00	5,108.88	1,130.91	94,206.04	2,075.69	13,798.10	1,10,079.83	3.79:1 (3.72:1)
B	Working Statutory Corporations													

Sl. No.	Sector and name of the company.	Paid up capital at the end of the current year.					Equity /loans received out of budget during the year.		Other loans received during the year.	Loans outstanding at the close of 2006-07.				Debt equity ratio for 2006-07 (Previous year) 4(g)/3(e)
		State Govt.	Central Govt.	Holding Companies	Others	Total	Equity	Loans		State Govt.	Central Govt.	Others.	Total.	
1	2	3(a)	3(b)	3(c)	3(d)	3(e)	4(a)	4(b)	4(c)	4(d)	4(e)	4(f)	4(g)	5
Power														
1.	Bihar State Electricity Board	---	---	---	---	---	---	13,155.38	12,908.80	5,47,312.79	---	49,635.49	5,96,948.28	
	Sector wise total	---	---	---	---	---	---	13,155.38	12,908.80	5,47,312.79	---	49,635.49	5,96,948.28	
Transport														
2.	Bihar State Road Transport Corporation.	7,475.57	2,651.78	---	---	10,127.35	---	---	---	8,102.22	---	---	8,102.22	0.8:1 (0.8:1)
	Sector wise total	7,475.57	2,651.78	---	---	10,127.35	---	---	---	8,102.22	---	---	8,102.22	0.8:1 (0.8:1)
Financing														
3.	Bihar State Financial Corporation.	3,994.77	---	---	3,788.94	7,783.71	---	7,100.00	---	19,851.42	---	10,067.50	29,918.92	3.84:1 (3.68:1)
	Sector wise total	3,994.77	---	---	3,788.94	7,783.71	---	7,100.00	---	19,851.42	---	10,067.50	29,918.92	3.84:1 (3.68:1)
Miscellaneous														
4.	Bihar State Ware-housing Corporation.	68.55 (200.00)	---	---	68.55	137.10 (200.00)	200.00	---	---	---	---	647.98	647.98	1.92:1 (5.29:1)
	Sector wise total	68.55 (200.00)	---	---	68.55	137.10 (200.00)	200.00	---	---	---	---	647.98	647.98	1.92:1 (5.29:1)
	TOTAL (B)	11,538.89 (200.00)	2,651.78	---	3,857.49	18,048.16 (200.00)	200.00	20,255.38	12,908.80	5,75,266.43	---	60,350.97	6,35,617.40	34.83:1 (34.01:1)
	Grand Total (A+B)	38,693.63 (981.94)	2,705.78	---	4,908.39 (4.24)	46,307.80 (986.18)	1,120.00	25,364.26	14,039.71	6,69,472.47	2,075.69	74,149.07	7,45,697.23	15.77:1 (15.62:1)
C Non-working Companies														
Agriculture and Allied														
1.	Bihar State Water Development Corporation Ltd.	1,000.00	---	---	---	1,000.00	---	---	---	4,967.89	---	---	4,967.89	4.97:1 (4.97:1)
2.	Bihar State Dairy Corporation Ltd.	672.36	---	---	---	672.36	---	---	---	175.35	---	---	175.35	0.26:1 (0.26:1)
3.	Bihar Hill Area Lift Irrigation Corporation Ltd.	1,000.00	---	---	---	1,000.00	---	---	---	855.42	---	---	855.42	0.86:1 (0.86:1)
4.	Bihar State Agro Industries Development Corporation Ltd. Ltd.	756.52 (7.00)	---	---	---	756.52 (7.00)	---	---	---	1,259.99	---	---	1,259.99	1.65:1 (1.65:1)
5.	Bihar Fruit & Vegetables Development Corporation Ltd.	161.37	49.00	---	---	210.37	---	---	---	41.81	70.00	---	111.81	0.77:1 (0.77:1)
6.	Bihar Insecticides Ltd.	---	---	57.03 (238.90)	---	57.03 (238.90)	---	---	---	---	---	154.10	154.10	0.52:1 (0.52:1)
	Sector-wise total	3,590.25 (7.00)	49.00	57.03 (238.90)	---	3,696.28 (245.90)	---	---	---	7,300.46	70.00	154.10	7,524.56	1.9:1 (1.9:1)
Industries (miscellaneous)														

Sl. No.	Sector and name of the company.	Paid up capital at the end of the current year.					Equity /loans received out of budget during the year.		Other loans received during the year.	Loans outstanding at the close of 2006-07.				Debt equity ratio for 2006-07 (Previous year) 4(g)/3(e)
		State Govt.	Central Govt.	Holding Companies	Others	Total	Equity	Loans		State Govt.	Central Govt.	Others.	Total.	
1	2	3(a)	3(b)	3(c)	3(d)	3(e)	4(a)	4(b)	4(c)	4(d)	4(e)	4(f)	4(g)	5
7.	Bihar State Small Industries Corporation Ltd.	718.48	---	---	---	718.48	---	---	---	1,040.00	---	183.00	1,223.00	1.70:1 (1.70:1)
8.	Bihar State Industrial Development Corporation Ltd.	1,404.00	---	---	---	1,404.00	---	---	---	6,702.00	---	217.95	6,919.95	4.93:1 (4.93:1)
9.	Bihar Scooters Ltd.	---	---	163.00	---	163.00	---	---	---	609.34	---	---	609.34	3.74:1 (3.74:1)
10.	Bihar Paper Mills Ltd.	---	---	776.92	---	776.92	---	---	---	---	---	1,071.61	1,071.61	1.38:1 (1.38:1)
11.	Bihar State Finished leathers Corporation Limited	---	---	88.00	59.00	147.00	---	---	---	918.00	---	---	918.00	6.24:1 (6.24:1)
12.	Bihar State glazed Tiles & Ceramics Ltd.	---	---	115.00 (25.00)	---	115.00 (25.00)	---	---	---	---	---	366.33	366.33	2.62:1 (2.62:1)
13.	Vishwamitra Paper Industries Ltd.	---	---	114.57 (59.72)	---	114.57 (59.72)	---	---	---	---	---	81.15	81.15	0.47:1 (0.47:1)
14.	Jhanjharpur Paper Industries Ltd.	---	---	107.35 (41.55)	---	107.35 (41.55)	---	---	---	---	---	46.16	46.16	0.31:1 (0.31:1)
15.	Bihar State Tannin Extract Ltd.	---	---	107.35	50.00	157.35	---	---	---	---	---	213.84	213.84	1.36:1 (1.36:1)
16.	Bihar solvent & Chemicals Ltd.	20.00	---	68.15	20.07	108.22	---	---	---	---	---	88.69	88.69	0.82:1 (0.82:1)
17.	Synthetic Resins (Eastern) Ltd.	---	---	21.47	9.52 (78.69)	30.99 (78.69)	---	---	---	---	---	105.08	105.08	0.95:1 (0.95:1)
18.	Magadh Minerals Ltd.	---	---	0.07 (36.15)	---	0.07 (36.15)	---	---	---	---	---	46.58	46.58	1.29:1 (1.29:1)
19.	Bhavani Active Carbon Ltd.	---	---	9.43	---	9.43	---	---	---	---	---	---	---	---
20.	Bihar State Leather Industries Development Corporation Ltd.	1,000.00	---	---	---	1,000.00	---	---	---	1,242.55	---	170.00	1,412.55	1.41:1 (1.41:1)
21.	Bihar State Construction corporation Ltd.	700.00	---	---	---	700.00	---	---	---	105.10	---	---	105.10	0.15:1 (0.15:1)
	Sector wise total	3,842.48	-	1,571.31 (162.42)	138.59 (78.69)	5,552.38 (241.11)	---	---	---	10,616.99	---	2,590.39	13,207.38	2.28:1 (2.28:1)
	Engineering													
22.	Kumardhubi Metal Casting & Engineering Ltd.	---	---	110.00	107.00	217.00	---	---	---	---	---	663.44	663.44	3.06:1 (3.06:1)
	Sector wise total	---	---	110.00	107.00	217.00	---	---	---	---	---	663.44	663.44	3.06:1 (3.06:1)
	Electronics													
23.	Beltron Video Systems Ltd.	---	---	504.71	---	504.71	---	---	---	---	---	450.87	450.87	0.89:1

Sl. No.	Sector and name of the company.	Paid up capital at the end of the current year.					Equity /loans received out of budget during the year.		Other loans received during the year.	Loans outstanding at the close of 2006-07.				Debt equity ratio for 2006-07 (Previous year) 4(g)/3(e)
		State Govt.	Central Govt.	Holding Companies	Others	Total	Equity	Loans		State Govt.	Central Govt.	Others.	Total.	
1	2	3(a)	3(b)	3(c)	3(d)	3(e)	4(a)	4(b)	4(c)	4(d)	4(e)	4(f)	4(g)	5
														(0.89:1)
24	Beltron Mining System Ltd.	---	---	248.24	---	248.24	---	---	---	---	---	---	---	---
25	Beltron Informatics Ltd.	---	---	0.28	---	0.28	---	---	---	---	---	---	---	---
	Sector-wise total	---	---	753.23	---	753.23	---	---	---	---	---	450.87	450.87	0.60:1 (0.60:1)
	Textiles													
26	Bihar State Textile Corporation Ltd.	536.85	---	---	---	536.85	---	---	---	224.66	---	---	224.66	0.42:1 (0.42:1)
	Sector wise total	536.85	---	---	---	536.85	---	---	---	224.66	---	---	224.66	0.42:1 (0.42:1)
	Handloom and Handicrafts.													
27	Bihar State Handloom & Handicrafts Corporation Ltd.	999.98	---	---	---	999.98	---	---	---	115.78	---	---	115.78	0.12:1 (0.12:1)
	Sector-wise total	999.98	---	---	---	999.98	---	---	---	115.78	---	---	115.78	0.12:1 (0.12:1)
	Sugar													
28	Bihar State Sugar Corporation Ltd.	2,000.00	---	---	---	2,000.00	---	888.56	---	32,294.83	---	---	32,294.83	16.15:1 (15.7:1)
	Sector wise total	2,000.00	---	---	---	2,000.00	---	888.56	---	32,294.83	---	---	32,294.83	16.15:1 (15.7:1)
	Cement													
29	Bihar State Cement Corporation Ltd.	---	---	0.07	---	0.07	---	---	---	3.17	---	---	3.17	45.29:1 (45.29:1)
	Sector wise total	---	---	0.07	---	0.07	---	---	---	3.17	---	---	3.17	45.29:1 (45.29:1)
	Drugs Chemicals and Pharmaceuticals													
30	Bihar State Pharmaceuticals and Chemicals Development Corporation Ltd.	1,500.00 (77.88)	---	---	---	1,500.00 (77.88)	---	---	---	427.91	---	---	427.91	0.27:1 (0.27:1)
31	Bihar Maize Product Ltd.	---	---	0.07 (73.68)	---	0.07 (73.68)	---	---	---	---	---	2.16	2.16	0.03:1 (0.03:1)
32	Bihar Drugs & Chemicals Ltd.	---	---	400.00	---	400.00	---	---	---	127.99	---	---	127.99	0.32:1 (0.32:1)
	Sector wise total	1,500.00 (77.88)	---	400.07 (73.68)	---	1,900.07 (151.56)	---	---	---	555.90	---	2.16	558.06	0.27:1 (0.27:1)
	Financing													

Sl. No.	Sector and name of the company.	Paid up capital at the end of the current year.					Equity /loans received out of budget during the year.		Other loans received during the year.	Loans outstanding at the close of 2006-07.				Debt equity ratio for 2006-07 (Previous year) 4(g)/3(e)
		State Govt.	Central Govt.	Holding Companies	Others	Total	Equity	Loans		State Govt.	Central Govt.	Others.	Total.	
1	2	3(a)	3(b)	3(c)	3(d)	3(e)	4(a)	4(b)	4(c)	4(d)	4(e)	4(f)	4(g)	5
33.	Bihar Panchayati Raj Finance Corporation Ltd.	106.51 (37.69)	---	---	---	106.51 (37.69)	---	---	---	---	---	---	---	---
	Sector wise total	106.51 (37.69)	---	---	---	106.51 (37.69)	---	---	---	---	---	---	---	---
	Miscellaneous Sector													
34	Bihar State Export Corporation Ltd.	200.00	---	---	---	200.00	---	---	---	121.77	---	---	121.77	0.61:1 (0.61:1)
	Sector wise total	200.00	---	---	---	200.00	---	---	---	121.77	---	---	121.77	0.61:1 (0.61:1)
	Total (C)	12,776.07 (122.57)	49.00	2,891.71 (475.00)	245.59 (78.69)	15,962.37 (676.26)	---	888.56	---	51,233.56	70.00	3,860.96	55,164.52	3.32:1 (3.26:1)
	GRAND TOTAL (A +B+C)	51,469.70 (1,104.51)	2,754.78	2,891.71 (475.00)	5,153.98 (82.93)	62270.17 (1,662.44)	1,120.00	26,252.82	14,039.71	7,20,706.03	2,145.69	78,010.03	8,00,861.75	12.53:1 (12.33:1)

Source: As per information provided by the PSUs.

Notes:-

1. Loans outstanding at the close of 2006-2007 represent long term loans only.
2. Figures are provisional and as given by the companies and corporations.
3. The Companies at Sl. No. C-10 and C-27 have been ordered to be wound up by the Patna High Court.
4. * The Paid up capital of Company at Sl No. 14 of Rs 47.67 has been bifurcated between Bihar (35.75) and Jharkhand (11.92).
5. The Company at Sl. No. A-17 is a New Company.

Annexure - 2

**Summarised Financial results of Government companies and Statutory corporations for the latest year for which accounts were finalised
(Referred to in paragraph 1.6, 1.7, 1.13, 1.18 & 1.19)**

(Figures in columns 7 to 12 and 15 are Rupees in lakh)

Sl. No.	Sector and Name of Company	Name of Department	Date of Incorporation	Period of Accounts	Year in which accounts finalised	Net Profit (+)/ Loss(-)	Net impact of Audit comments	Paid up capital	Accumulated profit(+)/loss(-)	Capital employed (A)	Total Return on capital employed (B)	Per centage of total return on capital employed	Arrears of accounts in terms of years	Turnover	Man Power
1	2	3	4	5	6	7	8	9	10	11	12	13	14	15	16
A. Working Companies															
Agriculture and Allied															
1.	Bihar Rajya Beej Nigam Ltd.	Agriculture	18.7.1977	1995-96	2005-06	(-)408.02	---	370.84	(-)3,873.29	924.34	(-)129.02	--	11	944.46	129
2.	Bihar Rajya Matsya Vikas Nigam Ltd.	Animal Husbandry & Fisheries	23.3.1980	1992-93	1996-97	(-)22.16	---	174.75	(-)191.54	174.19	(-)4.77	--	14		42
Sector wise total						(-)430.18	---	545.59	(-)4,064.83	1,098.53	(-)133.79	--	25		172
Electronics															
3.	Bihar State Electronics Development Corporation Ltd.	Industry	21.2.1978	1998-99	2006-07	(-)118.19	Understatement of loss by Rs 13.31 lakh	565.50	(-) 1,027.87	417.70	(-) 25.94	--	8	359.22	60
Sector wise total						(-)118.19	---	565.50	(-) 1,027.87	417.70	(-) 25.94	--	8	359.22	60
Forest															
4	Bihar State Forest Development Corporation Ltd.	Forest & Environment	10.2.1975	2000-01	2005-06	27.63	Understatement of loss by Rs 39.67 lakh	229.08	31.61	117.29	27.63	23.56	6	2,281.02	698
Sector wise total						27.63	---	229.08	31.61	117.29	27.63	23.56	6	2,281.02	698

Sl. No.	Sector and Name of Company	Name of Department	Date of Incorporation	Period of Accounts	Year in which accounts finalised	Net Profit (+)/ Loss(-)	Net impact of Audit comments	Paid up capital	Accumulated profit(+)/loss(-)	Capital employed (A)	Total Return on capital employed (B)	Per centge of total return on capital employed	Arrears of accounts in terms of years	Turnover	Man Power
1	2	3	4	5	6	7	8	9	10	11	12	13	14	15	16
Mining															
5.	Bihar State Mineral Development Corporation Ltd.	Mines & Geology	12.6.1972	2000-01	2004-05	929.04		997.35	703.82	2,067.55	929.04	44.93	6	3,154.58	1
Sector wise total						929.04		997.35	703.82	2,067.55	929.04	44.93	6	3,154.58	1
Construction															
6.	Bihar Police Building Construction Corporation Ltd.	Home (Police)	26.6.1974	1989-90	2004-05	(-)101.87	Understatement of loss by Rs 14.20 lakh	10.00	(-)153.35	(-)100.95	(-)101.87	--	17	30.27	408
7.	Bihar Rajya Pul Nirman Nigam Ltd.	Road Construction	11.6.1975	1995-96	2006-07	(-)127.62	---	350.00	(-)1,017.61	1097.01	(-)127.62	--	11	173.58	512
Sector wise total						(-)229.49	---	360.00	(-)1,170.96	996.06	(-)229.49	--	28	203.85	920
Development of Economically Weaker Section															
8.	Bihar State Minorities Finance Corporation Ltd.	Minority Welfare	22.3.1984	2001-02	2004-05	(-)25.13	---	1,280.00	(-)189.64	2,039.88	(-)25.13		5	30.84	21
9.	Bihar State Backward Classes Finance and Development Corporation.	Welfare	17.6.1993	1997-98	2006-07	(-)29.42	---	362.00	52.86	386.06	38.22	9.9	9	63.89	16
Sector wise total						(-)54.55		1,642.00	(-)242.40	2,425.94	13.09	9.9	14	94.73	37
Public Distribution															
10.	Bihar State Food and Civil Supplies Corporation Ltd.	Food & Civil Supplies	22.4.1973	1987-88	2006-07	488.22		455.99	(-)2,544.53	3,855.27	1,086.66	28.19	19	20,237.52	1,500
Sector wise total						488.22	---	455.99	(-)2,544.53	3,855.27	1,086.66	28.19	19	20,237.52	1,500
Tourism															
11.	Bihar State Tourism Development Corporation Ltd.	Tourism	28.11.1980	1995-96	2005-06	82.81	Profit overstated by Rs. 2.80 lakh	295.00	184.61	553.46	82.81	14.96	11	115.18	215
Sector wise total						82.81		295.00	184.61	553.46	82.81	14.96	11	115.18	215
Power															
12.	Bihar State Hydro Electric Power Corporation Ltd.	Energy	31.3.1982	1995-96	2004-05	(-)1,430.44	Understatement of loss by Rs 26.06 crore	8,926.00	(-)548.07	12,833.65	(-)878.82	--	11	296.06	144

Sl. No.	Sector and Name of Company	Name of Department	Date of Incorporation	Period of Accounts	Year in which accounts finalised	Net Profit (+)/ Loss(-)	Net impact of Audit comments	Paid up capital	Accumulated profit(+)/loss(-)	Capital employed (A)	Total Return on capital employed (B)	Per centage of total return on capital employed	Arrears of accounts in terms of years	Turnover	Man Power
1	2	3	4	5	6	7	8	9	10	11	12	13	14	15	16
13	Tenughat Vidyut Nigam Ltd.	Energy	26.11.1987	1993-94	2000-01	--		10,000.00		58,852.10		--	13		NA
	Sector wise total					(-1,430.44)		18,926.00	(-548.07)	71,685.75	(-878.82)	--	24	296.06	144
	Financing														
14	Bihar State Credit and Investment Corporation Ltd.	Industry	30.1.1975	2001-02	2006-07	(-903.36)	Understatement of loss by Rs. 2.19 crore	1512.35	(-12,648.62)	1,566.48	76.26	4.87	5	566.30	67
	Sector wise total					(-903.36)		1,512.35	(-12,648.62)	1,566.48	76.26	4.87	5	566.30	67
	Miscellaneous														
15.	Bihar State Text Book Publishing Corporation Ltd.	Education	2.4.1985	1996-97	2006-07	(-455.62)	Understatement of loss by Rs 81.39 lakh	47.67	161.94	(-144.22)	(-427.12)	--	10	812.71	240
16.	Bihar State Film Development and Finance Corporation Ltd.	Industry	6.3.1983	1991-92	2000-01	1.87	---	94.50	(-11.56)	88.33	1.87	2.12	15		8
17	Bihar State Beverages Corporation Ltd.	Excise	25.5.2006	---	---	---	---	---	---	---	---	---	1		144
	Sector wise total					(-453.75)	---	142.17	150.38	(-55.89)	(-425.25)	2.12	26	--	392
	Total (A)					(-2,092.69)		25,671.03	(-21,071.24)	84,728.14	522.20		172		4,206
B	Statutory Corporations														
	Power														
1.	Bihar State Electricity Board.	Energy Department.	1.4.1958	2004-05	2006-07	(-6,751.69)	---	---	(-24,067.07)	1,66,652.72	46933.00	27.37	2	1,00,048.64	14,589
	Sector wise total					(-6,751.69)			(-24,067.07)	1,66,652.72	46,933.00	27.37	2	1,00,048.64	14,589
	Transport														
2.	Bihar State Road Transport Corporation.	Transport Department.	1.5.1959	2001-02	2004-05	(-5,085.59)		10,127.35	(-62,443.17)	(-38,546.00)	(-2,346.08)		5	1,292.25	4,730
	Sector wise total					(-5,085.59)		10,127.35	(-62,443.17)	(-38,546.00)	(-2,346.08)		5	1,292.25	4,730

Audit Report (Commercial) for the year ended 31 March 2007

Sl. No.	Sector and Name of Company	Name of Department	Date of Incorporation	Period of Accounts	Year in which accounts finalised	Net Profit (+)/ Loss(-)	Net impact of Audit comments	Paid up capital	Accumulated profit(+)/loss(-)	Capital employed (A)	Total Return on capital employed (B)	Per centage of total return on capital employed	Arrears of accounts in terms of years	Turnover	Man Power
1	2	3	4	5	6	7	8	9	10	11	12	13	14	15	16
Financing															
3.	Bihar State Financial Corporation.	Industry Department	2.11.1954	2005-06	2006-07	1,734.13		7,783.71	(-)43,753.32	39,305.67	2,600.75	6.62	1	1,513.05	367
Sector-wise total						1,734.13		7,783.71	(-)43,753.32	39,305.67	2,600.75	6.62	1	1,513.05	367
Miscellaneous															
4.	Bihar State Ware-housing Corporation.	Co-operative	29.3.1957	2003-04	2006-07	28.97	Profit overstated by Rs. 7.19 lakh	137.10	383.32	1,498.56	30.93	2.06	3	1,809.61	305
Sector-wise total						28.97		137.10	383.32	1,498.56	30.93	2.06	3	1,809.61	305
Total (B)						(-)10,074.18		18,048.16	(-)1,29,880.24	1,68,910.95	47,218.60		11		19,991
Grand Total (A+B)						(-)12,166.44		43,719.19	(-)1,50,951.48	2,53,639.09	47,740.80		183		24,197
C Non-working Companies															
Agriculture and Allied															
1.	Bihar State Water Development Corporation. Ltd.	Water Resources	12.4.1973	1978-79	1997-98	216.84	---	500.00	(-)1,119.69	2,670.29	242.30	9.07	28		15
2.	Bihar State Dairy Corporation Ltd.	Animal Husbandry & Fisheries	13.3.1972	1991-92	2001-02	4.39	---	672.36	(-)900.07	568.69	4.39	0.77	15		
3.	Bihar Hill Area Lift Irrigation Corporation Ltd.	Minor Irrigation	3.6.1975	1982-83	1993-94	(-)26.39	---	560.00	(-)85.78	953.41	(-)13.27	---	24	0.52	
4.	Bihar State Agro Industries Development Corporation Ltd.	Agriculture	28.4.1966	1986-87	1995-96	(-)192.79	---	741.52	(-)1,416.00	510.80	(-)142.86	---	20		
5.	Bihar Fruit and Vegetables Development Corporation Ltd.	Agriculture	8.10.1980	1991-92	2005-06	(-)95.84	---	201.74	(-)512.54	62.45	(-)37.38	---	15	0.33	48
6.	Bihar Insecticides Ltd.	Industry	27.2.1983	1986-87	1991-92	(-)103.12	---	57.03	(-)103.12	234.98	(-)86.74	---	20		69
Sector wise total						(-)196.91	---	2,732.65	(-)4,137.20	5,000.62	(-)33.56	---	122		132
Industries (miscellaneous)															
7.	Bihar State Small Industries Corporation Ltd.	Industry	29.10.1961	1990-91	2005-06	(-)141.93	Understatement of loss by Rs 52.60 lakh	718.48	(-)1,655.56	185.69	(-)27.42	---	16	1,521.65	89
8.	Bihar State Industrial Development Corporation Ltd.	Industry	5.11.1960	1986-87	-	(-)588.92		1,404.00	(-)2,290.78	2,724.94	(-)317.13	-	20		

Sl. No.	Sector and Name of Company	Name of Department	Date of Incorporation	Period of Accounts	Year in which accounts finalised	Net Profit (+)/ Loss(-)	Net impact of Audit comments	Paid up capital	Accumulated profit(+)/loss(-)	Capital employed (A)	Total Return on capital employed (B)	Per centage of total return on capital employed	Arrears of accounts in terms of years	Turnover	Man Power
1	2	3	4	5	6	7	8	9	10	11	12	13	14	15	16
9.	Bihar Scooters Ltd.	Industry	19.1.1978	----	----	---	---	--	---	---	---	----	30		
10.	Bihar Paper Mills Ltd.	Industry	08.07.1977	1985-86	1997-98	(-)6.09	---	156.12	(-)31.06	143.61	(-)6.09	----	The company is under liquidation since April 04		
11.	Bihar State Finished Leather Corporation Ltd.	Industry	20.4.1982	1983-84	1986-87	(-)149.39	---	146.59	(-)213.06	615.00	(-)76.48	---	23		252
12.	Bihar State Glazed Tiles and Ceramics Industries Ltd.	Industry	2.4.1984	1985-86	1997-98	(-)8.48	---	15.52	(-)51.08	350.00	(-)17.60	---	20		38
13.	Vishwamitra Paper Industries Ltd.	Industry	18.6.1983	1984-85	1988-89	(-)0.91	---	40.37	(-)1.45	69.00	---	---	22		16
14.	Jhanjharpur Paper Industries Ltd.	Industry	27.2.1982	1985-86	1991-92	(-)1.33	---	42.41	(-)2.09	59.32	(-)1.33	---	21		14
15.	Bihar State Tannin Extracts Ltd.	Forest & Environment	27.1.1984	1988-89	1993-94	(-)31.56	---	103.30	(-)66.59	249.15	(-)15.86	---	18		
16.	Bihar Solvent and Chemical Ltd.	Forest & Environment	August 1979	1986-87	1995-96	(-)32.31	---	66.22	(-)32.31	167.23	(-)25.86	---	20		
17.	Synthetic Resins (Eastern) Ltd.	Industry	14.12.1982	1983-84	1987-88	(-)0.69	---	9.00	(-)0.73	17.41	(-)0.69	---	23		12
18.	Magadh Minerals Ltd.	Industry	22.11.1984	----	----	----	---	----	----	---	---	----	23		05
19.	Bhawani Active Carbon Ltd.	Industry	26.3.1985	1985-86	1989-90	(-)1.38	---	2.39	(-)1.38	1.05	(-)1.38	---	21		
20.	Bihar State Leather Industries Development Corporation Ltd.	Industry	23.3.1974	1982-83	2004-05	(-)37.09	Understatement of loss by Rs 0.57 lakh	514.00	(-)291.89	256.19	(-)37.09	---	24		419
21.	Bihar State Construction Corporation Ltd.	Water Resources	22.8.1974	1986-87	2004-05	125.38	---	700.00	(-)278.67	(-)1,026.64	125.49	---	20	1,870.12	1,479
	Sector wise total					(-)874.70	---	3,918.40	(-)4,916.65	3,811.95	(-)401.44	---	301		2,324
	Engineering														
22.	Kumardhubi Metal Casting and Engineering Ltd.	Industry	25.10.1983	1994-95	1995-96	(-)238.84	---	217.00	(-)815.97	91.13	(-)151.00	---	12	1,089.25	
	Sector wise total					(-)238.84	---	217.00	(-)815.97	91.13	(-)151.00	---	12		
	Electronics														
23.	Beltron Video System Ltd.	Industry	19.9.1984	1987-88	1998-99	(-)54.51	---	121.45	(-)21.77	101.98	(-)9.57	---	19	75.46	

Audit Report (Commercial) for the year ended 31 March 2007

Sl. No.	Sector and Name of Company	Name of Department	Date of Incorporation	Period of Accounts	Year in which accounts finalised	Net Profit (+)/ Loss(-)	Net impact of Audit comments	Paid up capital	Accumulated profit(+)/loss(-)	Capital employed (A)	Total Return on capital employed (B)	Per centage of total return on capital employed	Arrears of accounts in terms of years	Turnover	Man Power
1	2	3	4	5	6	7	8	9	10	11	12	13	14	15	16
24.	Beltron Mining System Ltd.	Industry	30.1.1986	1989-90	2002-03	(-)9.57	---	125.84	(-)49.33	52.48	(-)9.57	---	17	41.38	
25.	Beltron Informatics Ltd.	Industry	1.3.1988	---	---	---	---	---	---	---	---	---	20		
	Sector wise total					(-)64.08	---	247.29	(-)71.10	154.46	(-)19.14		56		
	Textiles														
26	Bihar State Textile Corporation Ltd.	Industry	21.2.1978	1987-88	1995-96	(-)9.18	---	498.05	(-)32.22	372.35	(-)9.18	---	19		40
	Sector wise total					(-)9.18	---	498.05	(-)32.22	372.35	(-)9.18	---	19		40
	Handloom and Handicrafts														
27	Bihar State Handloom and Handicrafts Corporation Ltd.	Industry	21.5.1974	1983-84	1996-97	(-)9.52	---	627.98	(-)43.81	707.51	1.46	0.21	Under liquidation since March 04		
	Sector wise total					(-)9.52	---	627.98	(-)43.81	707.51	1.46	0.21			
	Sugar														
28.	Bihar State Sugar Corporation Ltd.	Sugar Cane	26.12.1974	1984-85	1996-97	(-)919.85	---	997.00	(-)7231.46	(-)1,023.69	(-)320.24	---	22		
	Sector wise total					(-)919.85	---	997.00	(-)7,231.46	(-)1,023.69	(-)320.24		22		
	Cement														
29.	Bihar State Cement Corporation Ltd.	Industry	17.10.1981		---	---	---	---	---	---	---	---	26		
	Sector wise total					-	---	-	-	-	-	-	26		
	Drugs, Chemicals & Pharmaceuticals														
30.	Bihar State Pharmaceuticals and Chemicals Development Corporation Ltd.	Industry	22.2.1978	1985-86	1992-93	(-)16.83	---	361.62	(-)73.84	687.48	(-)16.83	---	21		78
31.	Bihar Maize Products Ltd.	Industry	2.9.1982	1983-84	1987-88	(-)2.70	---	66.59	(-)6.14	80.11	---	---	23		
32.	Bihar Drugs and Chemicals Ltd.	Industry	12.8.1983	1985-86	1991-92	(-)3.02	---	93.67	(-)16.09	115.65	(-)3.02	---	21		48
	Sector wise total					(-)22.55	---	521.88	(-)96.07	883.24	(-)19.85		65		126

Sl. No.	Sector and Name of Company	Name of Department	Date of Incorporation	Period of Accounts	Year in which accounts finalised	Net Profit (+)/ Loss(-)	Net impact of Audit comments	Paid up capital	Accumulated profit(+)/loss(-)	Capital employed (A)	Total Return on capital employed (B)	Per centage of total return on capital employed	Arrears of accounts in terms of years	Turnover	Man Power
1	2	3	4	5	6	7	8	9	10	11	12	13	14	15	16
Financing															
33.	Bihar Panchayati Raj Financial Corporation Ltd.	Panchayati Raj	20.4.1974	1984-85	1991-92	(-)1.19	---	144.20	(-)2.69	585.60	22.52	3.85	22		129
Sector wise total						(-)1.19	---	144.20	(-)2.69	585.60	22.52	3.85	22		129
Miscellaneous															
34	Bihar State Export Corporation Ltd.	Industry	29.12.1974	1991-92	1999-00	(-)10.50	---	200.00	(-)0.95	375.36	0.93	0.25	15	494.35	54
Sector wise total.						(-)10.50	---	200.00	(-)0.95	375.36	0.93	0.25	15	494.35	54
Total(C)						(-)2,347.32	---	10,104.45	(-) 17,348.12	10,958.53	(-) 929.50		681		
Grand Total(A+B+C)						(-)14,513.76	---	53,682.76	(-) 1,68,405.22	2,64,709.40	46,811.30		864		

Source: As per accounts submitted by the PSUs

Notes: 1. Capital employed represents net fixed assets (including capital works-in-progress) plus working capital except in finance companies and corporations where it represents a mean of aggregate of opening and closing balances of paid-up capital, free reserve, bonds, deposits and borrowings (including refinance).

2. The Companies at Sl. No. C-10 and C-27 have been ordered to be wound up by the Patna High Court.

Annexure – 3

**Statement of subsidy received, guarantees received, waivers of dues, loans on which moratorium allowed and loans converted into equity during the year and subsidy receivable and guarantees outstanding at the end of March 2007*.
(Referred to in paragraph 1.5 & 1.16)**

(Amount: Rupees in lakh)

Sl. No	Name of the Public Sector Undertaking	Subsidy received during the year				Guarantees received during the year and outstanding at the end of the year					Waiver of dues during the year				Loans on which moratorium allowed	Loan converted in equity during the year
		Central Govt.	State Govt.	Others	Total	Cash credit from banks	Loans from other sources	Letters of credits opened by banks	Payment obligation	Total	Loans repayment written off	Interest waived	Penal interest waived	Total		
1	2	3(a)	3(b)	3(c)	3(d)	4(a)	4(b)	4(c)	4(d)	4(e)	5(a)	5(b)	5(c)	5(d)	6	7
A	Working Companies															
1	Bihar State Backward Classes Finance Development Corporation Ltd.						47.50 (1,879.13)			47.50 (1,879.13)						
2	Bihar State Minorities finance corporation Ltd.	-	-	-	-	-	(2,000.00)			(2,000.00)	--	--	--	--	--	--
3	Bihar State Text Book Publishing corporation Ltd.	-	-	-	-	-	585.41 (585.41)			585.41 (585.41)	--	--	--	--	--	--
	Total- A	-	-	-	-	-	632.91 (4,464.54)			632.91 (4,464.54)	--	--	--	--	--	--
B	Working Statutory Corporations															
1	Bihar State Electricity Board	-	-	-	-	-	(13,862.50)	-	-	(13,862.50)	--	--	--	--	--	--
2	Bihar State Financial Corporation Ltd.	-	-	-	-	-	(8752.50)	-	-	(8,752.50)	--	31,879.50	--	--	--	--
	Total B.	-	-	-	-	-	(22,615.00)			(22,615.00)	--	31,879.50	--	--	--	--
	Grand Total (A+B).		-	-	-	-	632.91 (27,079.54)			632.91 (27,079.54)		31,879.50				
C	Non-Working Companies															
1	Bihar State Leather Industries Development Corporation Ltd.						(62.48)			(62.48)						
2	Bihar state Agro Industries development corporation limited.						(145.00)			(145.00)						
	Total C	-	-	-	-	-	(207.48)	-	-	(207.48)		--	--	--	--	--
	Grand Total (A+B+C)	-	-	-	-	-	632.91 (27,079.54)			632.91 (27,287.02)	--	3,1879.50	--	--	--	--

Source: As per information provided by the PSUs

* Figures as per information provided by the Companies/Corporations
Figures in brackets represent guarantees outstanding at the end of the year.

Annexure - 4
Statement of financial position of Statutory corporations
(Referred to in paragraph 1.7)

(Amount: Rupees in crore)

1. Bihar State Electricity Board			
Particulars	2003-04	2004-05	2005-06[^]
A Liabilities			
Equity Capital	---	---	---
Loans from Govt.	3,437.27	4,326.86	6,340.54
Reserves and Surplus(excluding depreciation reserve)	---	---	---
Current Liabilities and provisions	3,649.12	3,543.41	3,854.35
Capital liabilities	1,134.34	1,796.83	745.04
Total – A	8,220.73	9,667.10	11,218.65
B Assets			
Gross fixed assets	2,290.37	2,409.64	2,521.85
Less depreciation	1,592.00	1,708.91	1,822.99
Net fixed assets	698.37	700.73	698.85
Capital work-in- progress	271.06	464.57	620.26
Current assets	3,849.82	4,044.63	9,188.45
Investments	185.96	383.74	352.28
Subsidy receivable from Govt.	3,025.55	3,829.15	
Assets not in use	3.61	3.61	3.61
Miscellaneous expenditure			
Deficits	186.36	240.67	355.20
Total – B	8,220.73	9,667.10	11,218.65
C Capital employed*	1,170.14	1,666.53	7,014.49
2. Bihar State Road Transport Corporation[^]			
Particulars	2001-02	2002-03	2003-04
A Liabilities			
Capital (including capital loan & equity capital)	101.27	101.27	101.27
Borrowings (Govt.)	65.66	77.11	72.41
(Others)	2.87	-	-
Funds**	0.30	0.30	0.30
Trade dues and other current liabilities (including provisions)	492.08	684.28	723.39
Total – A	662.19	862.96	904.37
B Assets			
Gross Block	68.58	74.65	111.37
Less depreciation	52.18	54.12	59.70
Net fixed assets	16.40	20.53	51.67

[^] Figures are provisional and as per information provided by the Corporation.

*Capital employed represents net fixed assets (including Capital Work-in-Progress) plus working capital. While working out working Capital the element of deferred cost and investments are excluded from the current assets.

** Excluding depreciation funds.

Capital works in progress (including cost of chassis)	-	-	-
Investments	-	-	-
Current Assets, loans and advances	90.22	229.59	192.87
Accumulated Losses	555.56	612.84	659.83
Total – B	662.19	862.96	904.37
C. Capital employed[#]	(-)385.46	(-) 434.16	(-)478.85
3. Bihar State Financial Corporation			
Particulars	2004-05	2005-06	2006-07
A Liabilities			
Paid-up capital*	77.84	77.84	77.84
Reserve fund, other reserves	10.05	10.05	10.05
Borrowings	235.14	200.16	211.67
Bonds and Debentures	87.52	87.52	87.52
Others paid by State Govt.	0.14	--	--
Current liabilities and provisions	351.35	360.76	305.79
Total – A	762.04	736.33	692.87
B Assets			
Cash and Bank balance	13.40	13.58	69.13
Investments	0.05	0.05	0.05
Loans and advances	285.49	277.49	237.94
Net fixed assets	0.55	0.51	0.69
Current assets	6.66	443.69	385.06
Dividend deficit account	1.01	1.01	--
Deficit	454.88	--	--
Total – B	762.04	736.33	692.87
C. Capital employed**	404.60	393.06	381.32
4. Bihar State Warehousing Corporation[▲]			
Particulars	2004-05	2005-06	2006-07
A. Liabilities			
Paid-up capital	1.37	1.37	1.37
Reserves and surplus	9.39	9.39	10.39
Trade dues and other liabilities (including provisions)	13.62	18.99	15.99
Total -A	24.38	29.05	27.75
B Assets			
Gross block	7.78	14.33	20.87
Less depreciation	3.12	3.58	4.18
Net fixed assets	4.66	10.75	16.69
Capital work-in-progress	7.78	6.54	4.18
Current assets, loans and advances	11.94	11.76	6.87
Profit and loss Account			
Total – B	24.38	29.05	27.75
C. Capital employed[#]	10.76	10.06	11.76

Source: As per information provided by the PSUs

[#] Capital employed represents net fixed assets (including capital work-in-progress) plus working capital.

*Paid-up capital includes share application money.

**Capital employed represents the mean of the aggregate of opening and closing balances of paid-up capital, reserves (Other than those which have been funded specifically and backed by investment outside) bond, deposits and borrowings (including refinance).

[▲] Figures are provisional and as per information provided by the Corporation.

Annexure - 5
Statement of working results of Statutory corporations
(Referred to in paragraph 1.7)

(Amount: Rupees in crore)

1. Bihar State Electricity Board				
Sl. No	Particulars	2003-04	2004-05	2005-06
1	(a) Revenue Receipts	1,507.37	1,631.45	1,853.36
	(b) Subsidy from the Government	668.40	803.60	910.70
	Total	2,175.77	2,435.05	2,764.06
2	Revenue Expenditure (net of expenses capitalised) including write off of intangible assets but excluding depreciation and Interest	1,711.07	1,861.66	2,041.81
3	Gross Surplus/(-)deficit for the year (1-2)	464.70	573.39	722.25
4	Adjustment relating to previous years	22.74	13.21	23.51
5	Final Gross Surplus/(-)deficit for the year (3+4)	487.44	586.60	745.76
6	Appropriation			
(a)	Depreciation (less capitalised)	120.75	117.27	117.76
(b)	Interest on capital loans	179.24	286.22	581.90
(c)	Interest on other loans, bonds, advances etc.	220.84	252.54	59.46
(d)	Total Interest on loans and finance charges (b+c)	400.08	538.76	641.36
(e)	Less : Interest capitalised	10.86	15.13	19.00
(f)	Net Interest Charged to revenue (d-e)	389.22	523.63	622.36
(g)	Total appropriation (a+f)	509.97	640.90	740.12
7	Surplus (+) /deficit (-) before accountal of subsidy from State Government (5-6(g) -1(b))	(-)690.93	(-)857.90	(-)905.06
8	Net surplus/(-) deficit 5-6(g)	(-)22.53	(-)54.30	5.64
9	Total return on Capital employed*	366.69	469.33	628.00
10	Percentage of return on Capital employed	31.34	28.16	8.95
2 Bihar Road Transport Corporation[▲]				
	Particulars	2004-05	2005-06	2006-07
	Operating			
(a)	Revenue	51.51	58.48	53.92
(b)	Expenditure	71.33	74.21	78.85
(c)	Surplus (+)/Deficit(-)	(-)19.82	(-)15.73	(-)24.93
	Non-operating			
(a)	Revenue	3.23	2.25	0.98
(b)	Expenditure	37.73	36.53	30.07
(c)	Surplus (+)/Deficit (-)	(-)34.50	(-)34.28	29.09
	Revenue	54.74	60.73	53.92
	Expenditure	109.06	110.74	108.92
	Net Profit (+)/ Loss (-)	(-)54.32	(-)50.01	(-)55.11
	Interest on capital and loans	18.53	18.53	18.53
	Total return on Capital employed	(-) 35.79	(-) 31.48	(-)36.58

*Total return on capital employed represents Net surplus/deficit plus total interest charged to profit and loss account (less interest capitalised).

3. Bihar State Financial Corporation ▼				
	Particulars	2004-05	2005-06	2006-07
1	Income			
i)	Interest on loans	7.53	15.13	16.59
ii)	Other income	1.05	1.25	2.56
	Total - 1	8.58	16.38	19.15
2.	Expenses*			
i)	(a) Interest on long term loans and short term loans	17.47	8.67	12.37
	(b) Provision for non-performing assets	0.00	--	--
	(c) Other Expenses	7.56	11.16	10.57
	Total - 2	25.03	19.83	22.93
3.	Profit (+)/Loss (-) before tax (1-2)	16.45	3.45	3.78
4.	Provision for tax	-	0.02	0.01
5.	Other appropriations	16.98	20.81	64.99
6.	Amount available for dividend #	0.53	--	--
7.	Dividend	--	--	--
8.	Total return on capital employed	53.47	26.01	61.19
9.	<i>Per centage</i> of return on capital employed	4.45	6.62	16.05
4. Bihar State Warehousing Corporation ▼				
	Particulars	2004-05	2005-06	2006-07
1.	Income			
(a)	Ware housing charges	4.93	5.32	7.50
(b)	Other income	16.31	19.06	22.10
	Total - 1	21.24	24.38	29.60
2.	Expenses			
(a)	Establishment Charges	3.48	3.60	3.82
(b)	Other Expenses	17.19	19.71	23.72
	Total - 2	20.67	23.31	27.54
3	Profit (+)/Loss (-) before tax	0.57	1.07	2.06
4.	Prior period adjustment	0.06	--	--
5.	Other appropriation	--	--	--
6.	Amount available for dividend	Nil	0.20	0.40
7.	Dividend for the year	--	--	0.08
8.	Total return on Capital employed	0.57	1.07	2.46
9.	<i>Per centage of return on Capital employed</i>	5.30	9.94	32.46

Source: As per information provided by the PSUs

▼ Figures are provisional and as provided by the Corporation.

* Provision for Non-Performing Assets for the year may be distinctly shown under the head Expenses.

Represents profit of current year available for dividend after considering the specific reserve.

Annexure - 6
Statement showing operational performance of Statutory corporations
(Referred to in paragraph 1.12)

1. Bihar State Electricity Board[◊]

Particulars	2004-05	2005-06	2006-07
Installed capacity			
(a) Thermal	540	540	540
(b) Hydro	--	--	--
(c) Gas	--	--	--
(d) Other	--	--	--
Total	540	540	540
Normal maximum demand			
Power generated: (MKWH)			
(a) Thermal	153.49	120.95	167.00
(b) Hydro	--	--	--
(c) Gas	--	--	--
(d) Other	--	--	--
Total	153.49	120.95	167.00
Less: Auxiliary consumption			
(a) Thermal (percentage)	30.79 (20.06)	25.13 (20.78)	25.05 (15.00)
(b) Hydro (percentage)	--	--	--
(c) Gas (percentage)	--	--	--
(d) other (percentage)	--	--	--
Total (percentage)	30.79 (20.06)	25.13 (20.78)	25.05 (15.00)
Net power generated	122.70	95.82	141.95
Power purchased:	6,432.42	7,498.75	7,858.81
Total power available for sale	6,555.12	7,594.57	8,000.76
Power sold: (MU)	4,101.85	4,710.35	4,369.37
Transmission and distribution losses	2,453.27	2,884.22	3,631.39
Plant Load factor (Percentage)			
Percentage of transmission and distribution losses to total power available for sale	37.43	37.97	45.38
Number of villages/towns electrified	20,006	20,610	20,626
Number of pump sets/wells energised	1,71,107	1,71,884	1,73,048
Number of sub-stations: 220&132/83KV			
Transmission/distribution lines (in kms)			
(a) High/medium voltage: 220KV			
(b) Low voltage:132KV			

[◊] Figures are provisional and as provided by the Board.

Connected load (in MVA)			
Number of consumers (in lakh)	22.61	24.27	Under Compilati on
Number of employees	16,182	15,722	14,589
Consumer/employees Ratio	1:131	1:143	-
Total expenditure on staff during the year (Rs in crore)	541.87	573.48	528.80
Percentage of expenditure on staff to total revenue expenditure	19.02	18.92	18.92
Units sold			
(a) Agriculture	1,129.32	1,255.89	NA
(Percentage share to total units sold)	27.53	28.27	NA
(b) Industrial	724.46	786.06	NA
(Percentage share to total units sold)	17.66	16.91	NA
(c) Commercial	285.11	313.33	NA
(Percentage share to total units sold)	6.95	7.05	NA
(d) Domestic	1,161.68	1,303.89	NA
(Percentage share to total units sold)	28.32	29.35	NA
(e) Others	801.28	1051.18	NA
(Percentage share to total units sold)	19.54	18.41	NA
Total	4,101.85	4,710.35	NA
Particulars			
(a) Revenue (excluding subsidy from Government) (Rs. in crore)	1,631.45	1,853.36	NA
(b) Expenditure* (Rs. in crore)	1,963.80	2,159.57	NA
(c) Profit (+)/Loss (-) (Rs. in crore)	(-)332.35	(-)306.21	NA
(d) Average subsidy claimed from Government (in Rupees)	803.60	910.70	NA
(e) Average interest charges (in Rupees)	538.76	641.36	NA

- Revenue expenditure includes depreciation but excludes interest on long term loans.

2. Bihar State Road Transport Corporation^o

Particulars	2004-05	2005-06	2006-07
Average number of vehicles held	605	637	637
Average number of vehicles on road	463	455	386
Percentage of utilisation of vehicles	77	71	61
Number of employees	4,367	4,367	4,171
Employee vehicle ratio	1:9	1:10	1:11
Number of routes operated at the end of the year	212	212	239
Route kilometers	198	198	198
Kilometers operated (in lakh)			

^o Figures are as per information provided by the corporation.

(a) Gross	393.60	391.53	347.05
(b) Effective	380.13	381.97	340.28
(c) Dead	12.76	9.56	6.77
Percentage of dead kilometers to gross kilometers	3.24	2.44	1.95
Average kilometers covered per bus per day	226.00	230	242
Average Operating revenue per kilometers (Paise)	13.55	15.30	14.94
Increase(+) / Decrease(-) in operating revenue over previous year's income (percentage)	(-)7.32	(+)12.91	(-)2.35
Average expenditure per kilometer (Paise)	26.70	28.99	23.17
Increase(+) / Decrease(-) in operating expenditure over previous year's expenditure (percentage)	(-)30.01	(+)8.58	(-)20.08
Profit(+)/Loss(-) per kilometer (Paise)			
Number of operating depots	32	29	29
Average number of break-down per lakh kilometers	0.006	0.001	0.004
Average number of accidents per lakh kilometers	0.03	0.14	0.01
Passenger kilometer operated (in crore)	--	1.16	1.03
Occupancy ratio	66	65	65
Kilometers obtained per litre of			
(a) Diesel Oil	3.94	3.88	3.93
(b) Engine Oil	NA	NA	NA

3. Bihar State Warehousing Corporation*

Particulars	2004-05	2005-06	2006-07
Numbers of the centres covered	46	46	46
Storage capacity created upto the end of the year (tonnes in lakh)	--	0.20	0.20
Owned godowns	12.60	15.01	17.35
Hired godowns	13.26	12.02	12.70
Total	25.86	27.03	30.05
Average capacity utilised during the years (in lakh tonnes)	20.33	21.58	24.96
Per centage of utilisation	80	80	83
(a) Average revenue per tonne per year (rupees)	104.47	122.97	118.59
(b) Average expenditure per tonne per year (rupees)	101.67	108.02	110.33

4. Bihar State Financial Corporation[■]

(Amount: Rupees in lakh)

Particulars	2004-05		2005-06		2006-07	
	No.	Amount	No.	Amount	No.	Amount
Applications pending at the beginning of the year	--	--	--	--	--	--
Applications received	--	--	--	--	--	--
Total	--	--	--	--	--	--
Applications sanctioned	--	--	--	--	--	--
Applications cancelled/ Withdrawn/rejected	--	--	--	--	--	--
Application pending at the close of the year	--	--	--	--	--	--
Loans disbursed during the year	--	--	--	--	--	--

* Figures are as provided by the Corporation

■ Figures are as provided by the Corporation.

Loans outstanding at the close of the year	--	2,66,700.77	--	2,96,941.05		3,08,569.59
Amount over dues for recovery at the close of the year	--	--	--	--	--	--
a) Principal	--	25,725.69	--	24,949.99	--	21,138.29
b) Interest	--	2,50,734.61	--	2,71,243.31	--	2,86,259.44
Total	--	2,76,460.30	--	2,96,193.30	--	3,07,397.73
Amount involved in recoveries certificate cases	--	--	--	--	--	--
Percentage of default to total loan outstanding	--	--	--	99.74		99.62

Source: As per information provided by the PSUs

Annexure - 7
Names of the Government Companies of Bihar which are to be wound up.
(Referred to in paragraph 1.21)

(Amount: Rupees in lakh)

Sl. No.	Name of the Company	Paid-up Capital	Loans and advances given by Govt. of Bihar
1	Bihar State Leather Industries Development Corporation Limited.	1,000.00	1,242.55
2	Bihar State Handloom and Handicrafts Corporation Limited.	999.98	115.78
3	Bihar State Pharmaceuticals and Chemical Development Corporation Limited.	1,577.88	427.91
4	Bihar State Small Industries Corporation Limited.	718.48	1,040.00
5	Bihar State Sugar Corporation Limited	2,000.00	31,406.27
6	Bihar State Agro Industries Development Corporation Limited.	763.52	1,259.99
7	Bihar State Textile Corporation Limited.	537.00	223.66
8	Bihar State Fruit and Vegetables Development Corporation Limited.	210.37	41.80
9	Bihar State Forest Development Corporation Limited.	229.08	0.00
10	Bihar Panchayati Raj Finance Corporation Limited.	144.20	0.00
11	Bihar State Film Development and Finance Corporation Limited.	100.00	14.80
12	Bihar State Electronic Development Corporation Limited.	566.91	593.48
13	Bihar State Industrial Development Corporation Limited.	1,404.00	6,702.00
14	Bihar State Construction Corporation Limited.	700.00	105.10
15	Bihar State Police Building Construction Corporation Limited.	10.00	42.90
16	Bihar Rajya Pul Nirman Nigam Limited.	350.00	0.00
17	Bihar State Export Corporation Limited.	200.00	121.77
Total		11,511.42	43,338.01

Source: As per Resolution No. 2538 dated 19.06.2003 of the Government of Bihar.

Names of the Government Companies of Bihar which have filed petition for winding up in the Patna High Court.

Sl. No.	Name of the Company
1	Bihar State Leather Industries Development Corporation Limited.
2	Bihar State Handloom and Handicrafts Corporation Limited.*
3	Bihar State Pharmaceuticals and Chemical Development Corporation Limited.
4	Bihar State Small Industries Corporation Limited.
5	Bihar State Sugar Corporation Limited
6	Bihar State Agro Industries Development Corporation Limited.
7	Bihar State Textile Corporation Limited.
8	Bihar Finished Leather Limited.
9	Bihar State Film Development and Finance Corporation Limited.
10	Bihar Paper Mills Limited.*
11	Beltron Video Systems Limited.
12	Beltron Mining Systems Limited.
13	Bihar Fruits & Vegetables Development Corporation Ltd.

Source: As per information provided by Deputy Registrar, High Court of Judicature at Patna.

*Companies ordered to be wound up by the Patna High Court

Annexure - 8
Statement of names of the Companies for which decision for division of Assets, Liabilities and Management
has been taken
(Referred to in paragraph 1.23)

Sl. No.	Name of the Company/Corporation	Basis of reconstruction for Assets and Liabilities and its Management.	Implementation of the decision
1	Bihar Rajya Beej Nigam Ltd.	78:22 (Bihar: Jharkhand)	Decision implemented
2	Bihar State Mineral Development Corporation Ltd	Division on the basis of the profit of the Corporation, in its operation in the areas of Bihar and Jharkhand for the nine years preceding the division	Decision not yet implemented
3	Bihar State Credit and Investment Corporation Ltd.	Division on the basis of outstanding loans in the respective areas.	Decision not yet implemented
4	Bihar State Warehousing Corporation	98:2 (Bihar: Jharkhand)	Decision implemented
5	Bihar State Tourism Development Corporation Ltd.	(i) The share, assets and liabilities (including Hotel Ranchi Ashok) should be divided in the ratio of 3:1 (Bihar: Jharkhand) (ii) Immoveable property on "as is where is" basis.	Decision not yet implemented
6	Bihar State Minorities Finance Corporation Ltd.	Division on the basis of outstanding loans in respective areas.	Decision not yet implemented
7	Bihar State Backward Classes Development Corporation.	Division on the basis of outstanding loans in the respective areas.	Decision taken, if any, not available
8	Bihar State Hydro Electric Power Corporation Ltd.	69:31 (Bihar: Jharkhand)	Decision implemented
9	Bihar State Text Book Publishing Corporation Ltd.	Division of shares on the basis of population.	Decision implemented
10	Bihar State Financial Corporation.	Division on the basis of outstanding loans in the respective areas.	Decision not yet implemented
11	Bihar Hill Area Lift Irrigation Corporation	No consensus was reached between the two Governments for its Division.	Decision taken, if any, not available
12	Bihar State Food and Civil Supplies Corporation	3:1 (Bihar: Jharkhand)	Decision not yet implemented

Source: As per information provided by the PSUs

Annexure – 9
Observations of the Statutory Auditors on` the Internal Audit / Internal Control of the Companies
(Referred to in paragraph 1.28)

Sl No.	Name of the Company	Year of accounts	Observation
1	Bihar State Food and Civil Supplies Corporation Ltd.	1984-85, 1985-86, 1986-87, 1987-88.	The internal control procedures relating to purchase of stores, raw materials including components, plant and machinery, equipment and other assets, are deficient and are not commensurate with the size of the company and nature of business. There was no follow up of the reports submitted by internal auditor.
2	Bihar State Text Book Publishing Corporation Ltd.	1996-97.	The internal control procedures are generally adequate but need to be further strengthened to make it commensurate with the nature and size of business of the company for purchase of stores, raw materials, plant & machinery, equipments and other similar assets and for the sale of goods. Internal Audit has been conducted by a firm of Chartered Accountants after expiry of financial year. The accounts authenticated by the internal auditors differ from the accounts under audit and adopted by the Board of Directors.
3	Bihar State Electronic Development Corporation Ltd	1996-97, 1997-98, 1998-99.	Internal Audit System needs to be strengthened keeping in view the size and nature of its business
4	Bihar State Pul Nirman Nigam Ltd.	1994-95&1995-96	Internal control procedure regarding utilization of plant & machinery/ equipment needs to be further strengthened. The system of internal audit needs to be further strengthened.
5	Bihar State Backward Classes Finance and Development Corporation Ltd.	1999-2000 & 2000-01	The scope of nature of work of internal auditor is not laid down. The major shortcomings in the system are not reported / identifies by the internal audit. The preparation of District wise/ borrower wise loan ledger, the position of recovery, exact amount of interest and penalty to be charged on borrowers and maintenance of fixed assets register should also be brought under the scope of internal audit.

Source: Supplementary Report u/s 619 (3)(a) of the Companies Act, 1956 issued by Statutory Auditors on the accounts of the PSUs

Annexure-10
Statement of paid-up capital, investment and summarised working results of 619 (B) companies as per their latest finalised accounts
(Referred to in paragraph 1.30)

(Figures in column 5 to 19 are in Rupees lakh)

SL.N o.	Name of company	Status (working/non-working)	Year of account	Paid-up capital	Equity by			Loans by			Grants by			Total investment by way of equity, loans and grants			Profit(+)/loss(-)	Accumulated profit(+)/accumulated loss (-)
					State Govt.	State Govt. companies	Central govt. and their companies	State Govt.	State Govt. companies	Central govt. and their companies	State Govt.	State Govt. companies	Central govt. and their companies	State Govt.	State Govt. companies	Central govt. and their companies		
1	2	3	4	5	6	7	8	9	10	11	12	13	14	15	16	17	18	19
1	Bihar Air Products Ltd.	Working	1992-93	79.99	-	79.99	-	-	11.25	48.85	-	-	-	-	91.24	48.85	5.53	(-) 102.68
2	SCADA [▲] Agro Business Co. Ltd.	Working	2002-03	05.00	-	05.00	-	-	302.78	-	-	-	-	-	-	-	(-)6.87	(-)185.96
3	SCADA Agro Business Co. Khagaul Ltd.	Non-working**	Accounts not finalised since inception	-	-	-	-	-	-	-	-	-	-	-	-	-	-	-
4	SCADA Agro Business Ltd. Dehri	Non working	Accounts not finalised since inception	-	-	-	-	-	-	-	-	-	-	-	-	-	-	-
5	SCADA Agro Business Ltd. Arrah	Non working	Accounts not finalised since inception	-	-	-	-	-	-	-	-	-	-	-	-	-	-	-
6	SCADA Agro Business Ltd Aurangabad	Non working	Accounts not finalised since inception	-	-	-	-	-	-	-	-	-	-	-	-	-	-	-
7	SCADA Agro Business Ltd Mohaniyan	Non working	Accounts not finalised since inception	-	-	-	-	-	-	-	-	-	-	-	-	-	-	-
8	SCADA Agro Forestry Co. khagaul	Non working	Accounts not finalised since inception	-	-	-	-	-	-	-	-	-	-	-	-	-	-	-

Source: As per information provided by the PSUs

**Companies at serial nos 3 to 8 have filed petition for winding up, in the Patna High Court.

▲ Sone Command Area Development Agency (SCADA)

Annexure – 11
Statement showing Budgeted and Actual revenue and capital receipt and expenditure
(Referred to in paragraph No. 2.1.8)

Rupees in crore

Year	Revenue Receipt					Revenue Expenditure			
	Budgeted	Percentage increase (+) or decrease(-) to previous years	Actual Receipts	percentages of actual receipt to budgeted receipt	outstanding	Budgeted	Percentage increase (+)or decrease(-) to previous years	Actual expenditure	Percentage of actual expenditure to budgeted expenditure
2002-03	42.00	(+) 16.47	23.56	56.09	18.44	10.68	(+)4.40	4.96	46.44
2003-04	41.12	(-) 2.09	17.23	41.90	23.89	8.49	(-)20.51	4.36	51.35
2004-05	41.14	(+) 0.05	5.30	12.88	35.84	7.55	(-)11.07	3.57	47.28
2005-06	16.29	(-) 60.40	14.79	90.79	1.50	14.20	(+)88.08	7.42	52.25
2006-07	21.00	(+) 28.91	7.50	35.71	13.50	18.54	(+)30.56	9.42	50.81

Source : Annual Budget

Rupees in crore

Year	Capital Receipt					Capital Expenditure			
	Budgeted	Percentage increase (+)or decrease(-) to previous years	Actual Receipts	Percentage of actual receipt to budgeted receipt	outstanding	Budgeted	Percentage increase (+)or decrease(-) to previous years	Actual expenditure	Percentage of actual expenditure to budgeted expenditure
2002-03	36.10	(+)32.96	5.86	16.23	30.24	67.41	(+)20.38	9.35	13.87
2003-04	58.18	(+)61.16	29.23	50.24	28.95	90.80	(+)34.70	14.57	16.04
2004-05	55.12	(-)5.26	3.46	6.27	51.66	116.63	(+)28.45	16.28	13.95
2005-06	115.48	(+)109.51	29.09	25.19	86.39	115.48	(-)0.98	12.83	11.11
2006-07	122.37	(+)16.01	75.20	61.45	47.17	122.37	(+)5.96	32.02	26.17

Source : Annual Budget

Annexure –12
Status of the NABARD projects (as of 31.03.2007)
(Referred to in paragraph No. 2.1.9, 2.1.11, 2.1.13 and 2.1.14)

(Rupee in crore)

Sl. No.	Projects	Installed capacity (MW)	Initial Estimated cost as per DPR	Revised Estimated cost	Cumulative Progress up to 31.03.2007				scheduled date of completion	Revised date of completion	Actual date of completion
					Physical (in percentage)		Financial				
					Civil works	E/M works	Percentage in respect of revised cost				
							Expenditure	Percentage			
1	Amethi	0.50	3.24	4.87	43.29	28.77	1.15	23.62	31.03.2005	31.03.2008	N/A
2	Arwal	0.50	3.18	4.60	76.68	53.37	2.04	44.36		31.12.2007	N/A
3	Belsar	1.00	5.70	8.35	57.73	34.97	2.54	30.42		31.03.2008	N/A
4	Dehra	1.00	5.84	6.70	6.06	-	0.15	2.24		31.12.2008	N/A
5	Dhelabagh	1.50	7.20	7.20	100	100	7.20	100		Completed	8/2006
6	Jainagara	1.00	5.77	5.77	90	85	5.05	87.50		31.12.2007	N/A
7	Nasariganj	1.00	6.07	6.07	100	100	6.08	100		31.12.2007	N/A
8	Natwar	0.40	2.14	3.51	26.81	11.98	0.43	12.24		31.03.2008	N/A
9	Paharma	1.00	5.55	6.50	21.96	18.47	1.11	17.08		31.03.2008	N/A
10	Rajapur	0.70	3.46	9.19	55.03	29.18	1.40	15.22		31.03.2008	N/A
11	Rampur	0.25	2.22	3.51	75.16	36.50	1.30	37.01		31.12.2007	N/A
12	Sebari	1.00	5.68	5.68	88.32	62.12	4.17	73.38		31.12.2007	N/A
13	Shirkhinda	0.70	4.95	4.95	90.83	66.96	3.72	75.28		31.12.2007	N/A
14	Sipaha	1.00	5.43	6.40	6.32	-	0.15	2.34		31.12.2008	N/A
15	Tejpura	1.50	7.18	7.18	88.50	58.80	4.21	58.69		31.12.2007	N/A
16	Triveni	3.00	13.46	13.47	95	96	13.46	99.88		31.12.2007	N/A
17	Walidad	0.70	3.72	4.44	38.90	35.11	1.37	30.74		31.03.2008	N/A
	Total	16.75	90.79	108.39							

Source : Progress Report

Annexure-13
Status of the Jharkhand projects (as on 31.03.2007)
(Referred to in paragraph No.2.1.9 and 2.1.31)

(Amount: Rs in crore)

Sl. No.	Name of the Project	Installed capacity (MW)	Initial Estimated cost (year) as per DPR	Revised cost (year)	Cumulative Progress up to 31.03.2007			Scheduled date of completion	Revised date of completion	
					Physical (in percentage)	Financial				
						Civil works & E/M works	Percentage in respect of revised cost			
							Expenditure			Percentage
1	Chandil	8.00	12.95(1987)	40.49(1998)	85	30.67	75.75	March 1994	July 2001	
2	Tenu Bokaro	1.00	2.25(1984)	3.86(1999)	90	3.20	83.00	January 1993	December 2001	
3	Sadani	1.00	4.11(1994)	6.00(1999)	55	3.06	81.00	July 1999	July 2002	
4	Lower Ghaghri	0.40	2.59(1994)	4.00 (1999)	50	2.08	52.00	July 1999	September 2002	
5	Netarhat	0.05	0.24(1994)	0.60 (1999)	20	0.05	8.30	January 2000	July 2001	
6	Nindighagh	0.20	1.11(1997)	1.50(1999)	20	0.09	6.20	May 2001	March 2002	
7	Jalimghagh	0.20	1.31(1997)	2.00 (1999)	30	4.11	20.60	May 2001	March 2002	
8	Mandal	24.00	21.94(1984)	47.34(1996)	75	35.83	75.70	December 1992	N/A	
	Total	34.85	46.50	105.79		79.09				

Source : Progress Report

Annexure-14
Statement showing details of DPR, tenders and agreements of NABARD projects
(Referred to in paragraph No.2.1.14)

Sl .No.	Name of the Project	Date of preparation of DPR	Date of proposal sent to NABARD	Date of sanction by NABARD	Date of NIT	Date of finalization of tender	Date of agreement	Total delay in months	
								In inviting tender (f-e)	In signing agreement (h-f)
(a)	(b)	(c)	(d)	(e)	(f)	(g)	(h)	(i)	
1	Amethi	April 1999	March 2001	May 2003	11.11.2003	21.07.2004	18.09.2004(C) 12.07.2006(E/M)	5 5	9 31
2	Arwal	April 2000	March 2001	May 2003	11.11.2003	12.06.2004	28.08.2004(C) 12.07.2006(E/M)	5 5	8 31
3	Belsar	August 1999	March 2001	May 2003	11.03.2004	31.10.2005	03.04.2006(E/M)	9	24
4	Dehra	April 2000	March 2001	May 2003	18.04.2001	16.05.2006	LoI cancelled Fresh tender invited in March 2007.	-	-
5	Dhelabagh	April 2000	March 2001	May 2003	03.01.2001	25.02.2002	19.04.2002	-	14
6	Jainagara	March 1999	March 2001	May 2003	03.01.2001	25.02.2002	13.04.2002	-	14
7	Nasariganj	March 2000	March 2001	May 2003	03.01.2001	25.02.2002	13.04.2002	-	14
8	Natwar	May 1999	March 2001	May 2003	11.11.2003	29.06.2004	11.08.2006(C)	5	32
9	Paharma	March 2000	March 2001	May 2003	18.04.2001	26.10.2006(C) 22.11.2006(E/M)	31.01.2007(C) 29.12.2006(E/M)	-	68 67
10	Rajapur	August 1999	March 2001	May 2003	24.01.2006	16.05.2006	13.10.2006(C)	31	8
11	Rampur	May 1999	March 2001	May 2003	11.11.2003	21.07.2004	07.10.2004(C)	5	10

Audit Report (Commercial) for the year ended 31 March 2007

							29.06.2006(E/M)	5	30
12	Sebari	March 2000	March 2001	May 2003	18.04.2001	16.06.2004	06.09.2004(C) 08.10.2004(E/M)	- -	40 41
13	Shirkhinda	April 1999	March 2001	May 2003	18.04.2001	18.06.2004	27.06.2005(C) 06.06.2005(E/M)	- -	49 49
14	Sipaha	September 1999	March 2001	May 2003	18.04.2001	16.05.2006	LoI cancelled .Fresh tender invited in March 2007.	-	-
15	Tejpura	March 2000	March 2001	May 2003	14.11.2003	18.06.2004	09.10.2004(C) 06.06.2005(E/M)	5 5	10 18
16	Triveni	June 1986	March 2001	May 2003	24.09.1999	28.04.2001	27.06.2001	-	20
17	Walidad	October 1999	March 2001	May 2003	11.11.2003	12.06.2004	24.08.2004	5	8

Source : Files and Report regarding NABARD

Annexure –15

**Statement showing estimates, actual cost of constructions, scheduled/actual date of commissioning and projected/actual generation of electricity
(Referred to in paragraph No. 2.1.32)**

Project (capacity in KW)	Agnoor (2X500)	Barun (2X1650)	Dehri (4X1650)	Dhelabagh (2X500)	Kataiya* (4 X 4800)	Valmikinagar (3X5000)
Estimated (Initial) Cost (Rs in lakh)	245 (6/86)	626	1,300	687.5	-	1,740
Actual cost (Rs in lakh)	1,080.7 ⁺	1,605	3474	788.51 ⁺	-	6327
Cost per KW of capacity (Rs in lakh)	1.08	0.49	0.53	0.79	-	0.42
Cost overrun (Rs in lakh)	835.7	979	2,174	101.01	-	4587
Scheduled date of commissioning	5/2000	6/1988	3/1988	6/2004	-	9/1988
Actual date of commissioning	1/2006	3-7/1996	1 to 6/1993	8/2006	-	9/95 to 11/97
Time overrun (in months)	67	97	63	25	-	109
Actual period of generation of electricity	1 year	11 years	14 years	8 month	-	11.5 years
Generation of electricity during the period of operation						
Estimated	(In Million Units)					
2002-03	--	19.447	43.106	--	-	98.700
2003-04	--	19.447	43.106	--	-	98.700
2004-05	--	19.447	43.106	--	99.720	98.700
2005-06	--	19.447	43.106	--	99.720	98.700
2006-07	4.485	19.447	43.106	5.297 [▲]	99.720	98.700
Actual	(In Million Units)					
2002-03	-	8.552	15.095	-	-	22.485
2003-04	-	10.732	15.887	-	-	18.272
2004-05	-	11.637	15.316	-	3.472	24.962
2005-06	-	10.134	17.973	-	15.467	27.846

* Transferred from Bihar State Electricity Board in June 2003.

⁺ Final bill is yet to be finalised.

[▲] Proportionate estimated generation for 8 months.

Audit Report (Commercial) for the year ended 31 March 2007

2006-07	0.759	8.888	16.707	0.558	16.861	25.330
Range of generation	0.759	8.552 to 11.637	15.095 to 17.973	0.558	3.472 to 16.861	18.272 to 27.846
Percentage of actual generation to estimated generation						
2002-03	-	43.97	35.02	-	-	22.78
2003-04	-	55.18	36.85	-	-	18.51
2004-05	-	59.84	35.53	-	3.48	25.29
2005-06	-	52.11	41.69	-	15.51	28.21
2006-07	16.92	45.70	38.75	10.53	16.91	25.66

Source : DPRs of the SHPPs and concerned Generation Reports

Annexure-16
Statement showing outages of the units in operation
(Referred to in paragraph No.2.1.33)

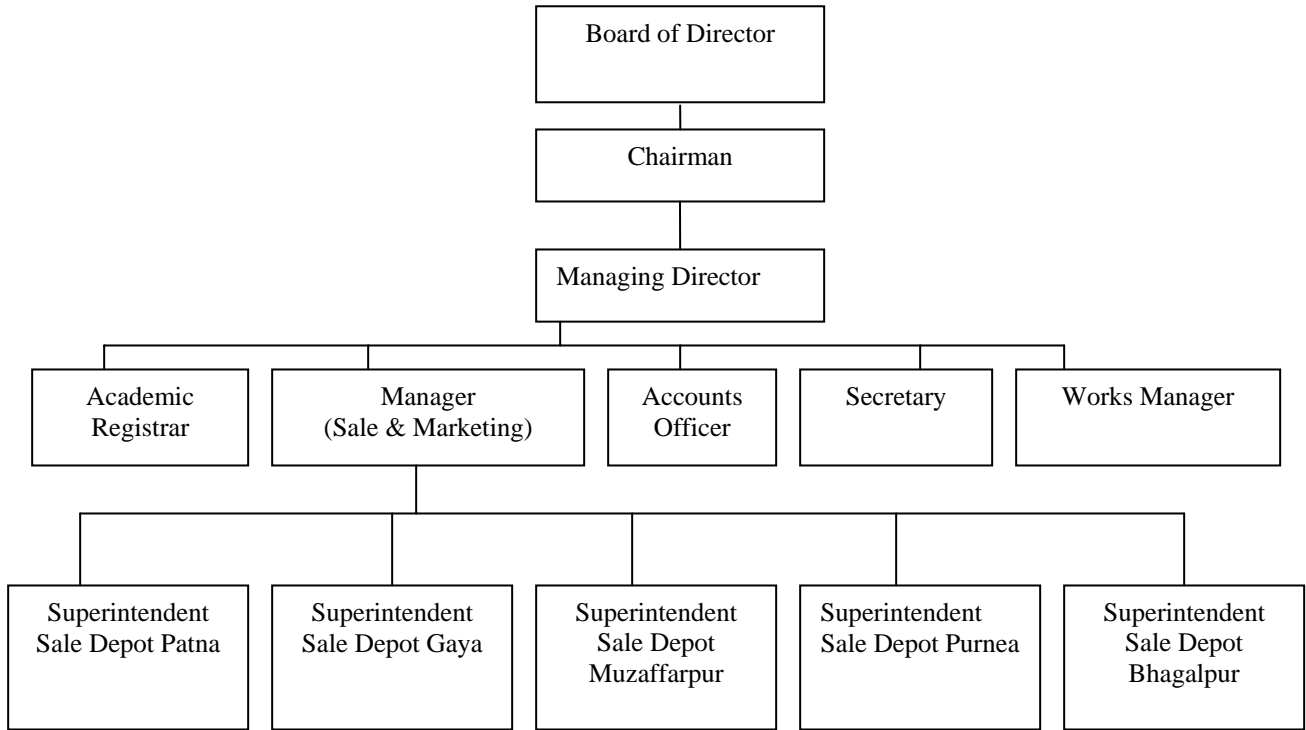
Year	Project/ installed capacity	Available Hours	Operational Hours	Outages	Percentag e of outages to Available Hours	Nature of outages								
						Unavoidable		Avoidable						
						No discharge of water	Break down /shutdown	Low discharge of water	Power tripping/ failure	Canal closure/no irrigation demand	Trash rack cleaning	Major break down	Total of avoidable outages	Percentag e of avoidable outages to available Hrs
2002-03	Barun/ 2X1.65 MW	17,520	6,481.33	11,038.27	63.00	2,592.00	-	3520.43	459.04	4,464.00	2.40	-	8,446.27	48.21
	Dehri/ 4X1.65 MW	35,040	12,686.20	22,353.40	63.79	5,088.00	20.45	10784.42	1,019.15	5,280.00	160.58	-	17,244.55	49.21
	Valmikinagar/ 3X5 MW	26,280	5,899.25	20,380.35	77.55	5,346.00	40.40	9155.00	425.20	7,207.45	5.50	-	16,793.55	63.90
2003-04	Barun/ 2X1.65 MW	17,568	7,878.09	9,689.51	55.15	1,440.00	-	2777.14	1,293.17	4,176.00	3.20	-	8,249.51	46.95
	Dehri/ 4X1.65 MW	35,136	13,136.06	21,999.54	62.61	2,400.00	3.39	11023.06	375.45	7,968.00	229.24	-	19,596.15	55.77
	Valmikinagar/ 3X5 MW	36,352	5,496.40	20,855.20	57.37	1,073.30	6.20	8651.35	748.05	10,371.30	4.20	-	19,775.30	54.40
2004-05	Barun/ 2X1.65 MW	17,520	7,475.06	10,044.54	57.33	2,592.00	-	2565.52	1,093.32	3,792.00	1.30	-	7,452.54	42.54
	Dehri/ 4X1.65 MW	35,040	13,807.14	21,232.46	60.59	960.00	16.04	14949.45	292.31	4,896.00	118.26	-	20,256.42	57.81
	Kataiya/ 4X4.8 MW	17,520	1,478.10	16,041.50	91.56	8,804.10	78.00	6147.30	31.59	960.00	20.11	-	7,159.40	40.87
	Valmikinagar/ 3X5 MW	26,280	6,958.20	19,321.40	73.52	1,563.00	21.45	12723.10	591.10	4,412.15	10.20	-	17,736.55	60.49
2005-06	Barun/ 2X1.65 MW	17,520	7,933.06	9,586.54	54.71	3,504.00	-	3791.44	849.55	1,440.00	1.15	-	6,082.54	34.72
	Dehri/ 4X1.65 MW	35,040	13,611.02	21,428.58	61.15	3,360.00	3.37	12684.50	223.09	4,992.00	165.22	-	18,065.21	51.56
	Kataiya/ 4X4.8 MW	17,520	4,777.09	12,742.51	72.73	5,199.31	54.10	5074.05	188.46	2,208.00	18.19	-	7,489.10	42.75
	Valmikinagar/ 3X5 MW	26,280	7,087.40	19,192.20	73.03	116.30	67.20	14332.25	308.05	4,355.30	12.30	-	19,008.30	72.33
2006-07	Agnoor/ 2X500 KW	14,592	2,511.01	12,080.59	82.79	4,848.00	3.18	882.28	4,852.09	1,488.00	7.04	-	7,229.41	49.55
	Barun/ 2X1.65 MW	17,520	6,479.22	11,040.38	63.01	3,888.00	1.30	2865.20	1,351.50	2,928.00	5.58	-	7,151.08	40.82

Audit Report (Commercial) for the year ended 31 March 2007

	Dehri/ 4X1.65 MW	35,040	13,972.03	21,067.57	60.12	-	63.45	10,888.34	356.15	9,408.00	351.23	-	21,004.12	59.54
	Dhelabagh/ 2X500 KW	10,272	1,850.20	8,421.40	81.98	768.00	46.53	559.27	5271.20	1,776.00	-	-	7,606.47	74.05
	Kataiya/ 4X4.8 MW	17,520	5,675.27	11,844.33	67.60	1,232.19	199.30	4,438.15	64.11	5,760.00	150.18	-	10,412.44	59.43
	Valmikinagar/ 3X5 MW	26,280	6,761.20	19,518.40	74.27	166.15	9.10	1,4805.10	319.00	4,209.30	9.35	-	19,343.15	73.61

Source : Generation/Outages Report

Annexure-17
ORGANISATION CHART
(Referred to in paragraph 2.2.1)



Annexure – 18

Statement showing amount less realised due to under billing of books.

(Referred to in paragraph 2.2.15)

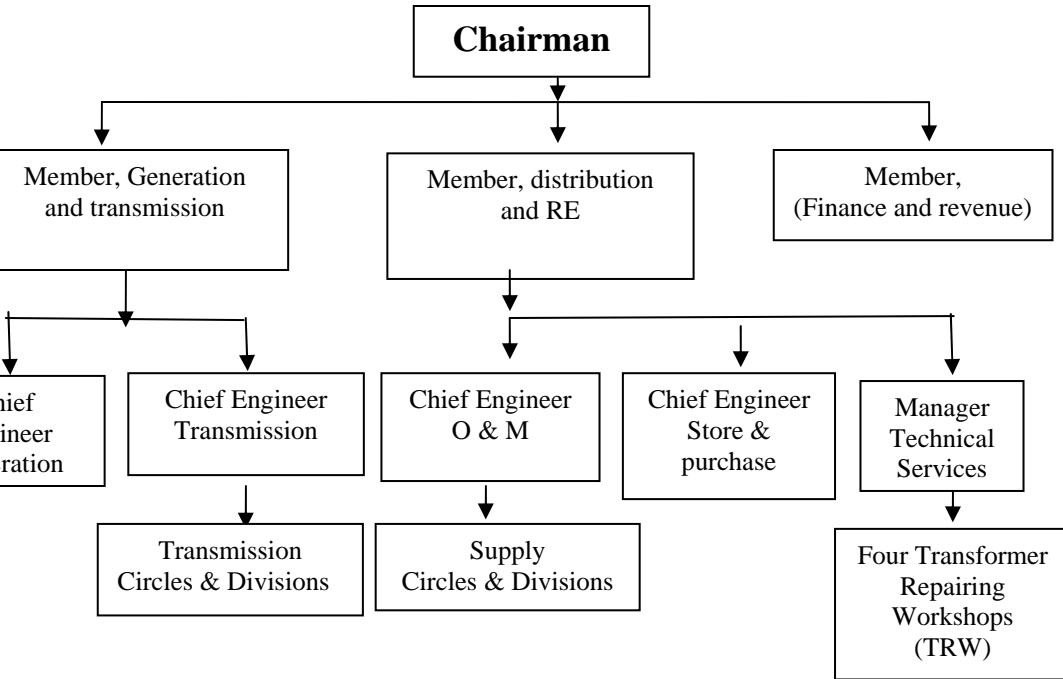
(Amount in rupees)

Sarva Shiksha Abhiyan										
Name of Books	Class	Year	Total number of books supplied	Chargeable rate	Chargeable amount	Charged rate	Charged amount	Difference of rate	Amounts of loss	
Aao Hisab Shikhein	5 (Urdu)	2002	14,885	30.50	4,53,992.50	21.20	3,15,562.00	9.30	1,38,430.50	
Aao Hisab Shikhein	5 (Urdu)	2003	21,466	30.50	6,54,713.00	21.20	4,55,079.20	9.30	1,99,633.80	
Aao Hisab Shikhein	5 (Urdu)	2004	15,854	30.50	4,83,547.00	21.20	3,36,104.80	9.30	1,47,442.20	
Aao Hisab Shikhein	5 (Urdu)	2005	12,021	30.50	3,66,640.50	21.20	2,54,845.20	9.30	1,11,795.30	
DPEP										
Hisab-III	3(Urdu)	2002	45,180	23.10	10,43,658.00	18.80	8,49,384.00	4.30	1,94,274.00	
Hisab-IV	4 (Urdu)	2002	41,900	40.70	17,05,330.00	28.20	11,81,580.00	12.50	5,23,750.00	
Aao Hisab Shikhein	5 (Urdu)	2002	46,140	30.50	1,40,7270.00	21.20	9,78,168.00	9.30	4,29,102.00	
Aao Hisab Shikhein	5 (Urdu)	2004	13,994	30.50	4,26,817.00	21.20	2,96,672.80	9.30	1,30,144.20	
	Total		2,11,440		65,41,968.00		46,67,396.00		18,74,572.00	

Source : Sales statement and files of the Company.

Annexure-19

Organizational set up of the Bihar State Electricity Board (Board) dealing with procurement, performance, maintenance and repair of transformers
(Referred to in paragraph 3.1)



Annexure-20
Statement of department wise outstanding Inspection Reports (IRs)
(Referred to in paragraph 4.13)

Name of Department	No. of PSUs	No. of outstanding IRs	No. of outstanding paragraphs	Year from which paragraphs outstanding
Industry	28	127	641	1990-91
Forest & Environment	3	53	332	1990-91
Agriculture	3	43	242	1990-91
Energy	3	1,136	3,459	N.A.
Animal Husbandry	2	14	46	1990-91
Water Resources	2	10	59	1990-91
Sugar Cane	1	28	198	1990-91
Food, Supply & Commerce	2	94	537	1990-91
Tourism	1	17	55	1990-91
Human Resources	1	6	18	1990-91
Road Construction	1	37	197	1990-91
Home	1	13	48	1990-91
Welfare	2	7	58	1990-91

Panchayati Raj	1	4	7	1990-91
Mines and Geology	1	28	135	1990-91
Minor Irrigation	1	6	33	1990-91
Transport	1	61	382	1990-91
Co-operative	1	24	91	1990-91
total	55	1,708	6,538	

Information available with the PAG office.

Annexure - 21

**Statement of department wise draft paragraphs/reviews, reply to which are awaited
(Referred to in paragraph 4.13)**

Sl. No.	Name of Department	No. of draft paragraphs	No. of reviews	Periods of issue
1.	Energy	8	2	May 2007-October 2007
2.	Industry	2	-	June 2007
3.	Welfare	2	-	June 2007
4.	Education	-	1	July 2007

Source: Information available with the PAG office.