

Annexure 1

(Referred to in paragraph 1.2, 1.4, 1.5 and 1.6)

Statement showing particulars of up-to-date paid-up capital, budgetary outgo, loans given out of budget and loans outstanding as on 31 March 2007 in respect of Government companies and Statutory corporations

(Figures in column 3(a) to 4(f) are Rupees in lakh)

1	2	Paid-up capital as at the end of the current year (Figures in brackets indicate share application money)					Equity/loans received out of budget during the year		Other loans received during the year	Loans @ outstanding at the close of 2006-07 \$			Debt-equity ratio for 2006-2007 (Previous year) 4(f)/3(e)
		State Government	Central Government	Holding Company	Others	Total#	Equity	Loans		Govt.	Others	Total	
1	2	3(a)	3(b)	3(c)	3(d)	3(e)	4(a)	4(b)	4(c)	4(d)	4(e)	4(f)	5
A	Working Government companies												
	AGRICULTURE AND ALLIED												
1	Andhra Pradesh State Agro Industries Development Corporation Limited	1881.02	269.02			2150.04				2427.18		2427.18	1.13:1 (1.13:1)
2	Andhra Pradesh State Irrigation Development Corporation Limited	11747.90 (1538.00)	95.00			11842.90 (1538.00)				4819.99		4819.99	0.36:1 (0.35:1)
3	Andhra Pradesh Meat Development Corporation Limited	545.93 (2356.00)	141.00			686.93 (2356.00)				209.14		209.14	0.07:1 (0.00:0.00)
	Total	14174.85 (3894.00)	505.02			14679.87 (3894.00)				7456.31		7456.31	0.40:1 (0.38:1)
	INDUSTRY												
4	Andhra Pradesh Industrial Development Corporation Limited	9519.00 (3496.00)	104.00			9623.00 (3496.00)	(31.89)	300.00	3000.00	1402.88	2313.23	3716.11	0.28:1 (0.62:1)
5	Andhra Pradesh Industrial Infrastructure Corporation Limited	1632.75				1632.75							
6	Leather Industries Development Corporation of Andhra Pradesh Limited	390.35 (335.00)				390.35 (335.00)				546.79		546.79	0.75:1 (0.75:1)
7	Andhra Pradesh Beverages Corporation Limited	832.96 (1.00)				832.96 (1.00)							
8	Vizag Apparel Park for Export**	5.00				5.00							

Audit Report (Commercial) for the year ended 31 March 2007

1	2	3(a)	3(b)	3(c)	3(d)	3(e)	4(a)	4(b)	4(c)	4(d)	4(e)	4(f)	5
9	Infrastructure Corporation of Andhra Pradesh Limited	500.00				500.00				375.00		375.00	0.75:1 (-)
	Total	12880.06 (3832.00)	104.00			12984.06 (3832.00)	31.89	300.00	3000.00	2324.67	2313.23	4637.90	0.28:1 (0.52:1)
	ENGINEERING												
10	Andhra Pradesh Heavy Machinery and Engineering Limited (S)	14.90		1408.27	304.01	1727.18				100.00	478.00	578.00	0.33:1 (0.44:1)
	Total	14.90		1408.27	304.01	1727.18				100.00	478.00	578.00	0.33:1 (0.44:1)
	HANDLOOM AND HANDICRAFTS												
11	Andhra Pradesh Handicrafts Development Corporation Limited	150.36	50.00			200.36				49.24		49.24	0.25:1 (0.25:1)
	Total	150.36	50.00			200.36				49.24		49.24	0.25:1(0.25:1)
	FOREST												
12	Andhra Pradesh Forest Development Corporation Limited	2020.95	50.00			2070.95		480.00	265.00	2298.97	5745.00	8043.97	3.88:1 (3.65:1)
	Total	2020.95	50.00			2070.95		480.00	265.00	2298.97	5745.00	8043.97	3.88:1 (3.65:1)
	MINING												
13	Andhra Pradesh Mineral Development Corporation Limited	630.62				630.62							
14	Damodar Minerals Private Limited(S)			1.89	1.82	3.71							
15	Wolkem Andhra Mining Private Limited(S)			1.05	1.01	2.06							
16	The Singareni Collieries Company Limited	88559.91	84756.00		3.90	173319.81					66333.00	66333.00	0.38:1(0.38:1)
	Total	89190.53	84756.00	2.94	6.73	173956.20					66333.00	66333.00	0.38:1(0.38:1)
	CONSTRUCTION												
17	Andhra Pradesh State Police Housing Corporation Limited	180.74				180.74			1000.00		9374.36	9374.36	51.87:1 (63.64:1)
18	Andhra Pradesh State Housing Corporation Limited	25.00				25.00		76672.78	31500.00	317393.14	221962.87	539356.01	21574.24:1(17622.70:1)
19	Andhra Pradesh Urban Finance and Infrastructure Development Corporation Limited	15.00				15.00				4367.46	30440.52	34807.98	2320.53:! (2505.43:1)
	Total	220.74				220.74		76672.78	32500.00	321760.60	261777.75	583538.35	2643.53:1 (2218.23:1)

1	2	3(a)	3(b)	3(c)	3(d)	3(e)	4(a)	4(b)	4(c)	4(d)	4(e)	4(f)	5
	DEVELOPMENT OF ECONOMICALLY WEAKER SECTION												
20	Andhra Pradesh State Minorities Finance Corporation Limited	500.00 (12485.00)				500.00 (12485.00)	1410.00	700.00		2700.39		2700.39	0.21:1 (0.20:1)
	Total	500.00 (12485.00)				500.00 (12485.00)	1410.00	700.00		2700.39		2700.39	0.21:1 (0.20:1)
	PUBLIC DISTRIBUTION SYSTEM												
21	Andhra Pradesh State Civil Supplies Corporation Limited	300.00				300.00							
	Total	300.00				300.00							
	SUGAR												
22	The Nizam Sugars Limited	3349.00			51.00	3400.00				4277.00	5.00	4282.00	1.26:1 (1.36:1)
	Total	3349.00			51.00	3400.00				4277.00	5.00	4282.00	1.26:1 (1.36:1)
	TOURISM												
23	Andhra Pradesh Tourism Development Corporation Limited	376.13				376.13			250.00		1866.89	1866.89	4.96:1 (6.03:1)
	Total	376.13				376.13			250.00		1866.89	1866.89	4.96:1 (6.03:1)
	POWER												
24	Andhra Pradesh Power Generation Corporation Limited	210680.01				210680.01			142518.70	3431.89	567492.17	570924.06	2.71:1 (2.15:1)
25	Transmission Corporation of Andhra Pradesh Limited	77921.76				77921.76		1917.09	32286.66	3794.06	186673.41	190467.47	2.44:1 (2.24:1)
26	Eastern Power Distribution Company of Andhra Pradesh Limited	12122.53				12122.53			17088.09	5306.75	65465.93	70772.68	5.84:1 (7.30:1)
27	Southern Power Distribution Company of Andhra Pradesh Limited	35871.53				35871.53		1524.00	33500.00	5349.00	130474.00	135823.00	3.79:1 (3.12:1)
28	Central Power Distribution Company of Andhra Pradesh Limited	72847.96				72847.96			38844.00	5744.26	118503.17	124247.43	1.71:1(1.40:1)
29	Northern Power Distribution Company of Andhra Pradesh Limited	27476.39				27476.39		109.77	15269.07	3412.44	79699.43	83111.87	3.02:1(2.82:1)
30	Andhra Pradesh Power Finance Corporation Limited	2900.21				2900.21			25000.00		539024.00	539024.00	185.86:1 (227.53:1)
	Total	439820.39				439820.39		3550.86	304506.52	27038.40	1687332.11	1714370.51	3.90:1 (3.79:1)

Audit Report (Commercial) for the year ended 31 March 2007

1	2	3(a)	3(b)	3(c)	3(d)	3(e)	4(a)	4(b)	4(c)	4(d)	4(e)	4(f)	5
	FINANCING												
31	Andhra Pradesh State Film Television and Theatre Development Corporation Limited	622.05				622.05				74.04		74.04	0.12:1 (0.15:1)
	Total	622.05				622.05				74.04		74.04	0.12:1 (0.15:1)
	MISCELLANEOUS												
32	Non Conventional Energy Development Corporation of Andhra Pradesh Limited	19.13			2.82	21.95					305.07	305.07	13.90:1 (17.42:1)
33	Andhra Pradesh Technology Services Limited	20.00				20.00							
34	Andhra Pradesh State Trading Corporation Limited	85.01			1.00	86.01							
35	Overseas Manpower Company Andhra Pradesh Limited	21.49				21.49							
	Total	145.63			3.82	149.45					305.07	305.07	2.04:1 (2.88:1)
	Total: A	563765.59 (20211.00)	85465.02	1411.21	365.56	651007.38 (20211.00)	1441.89 (31.89)	81703.64	340256.52	368079.62	2026156.05	2394235.67	3.37:1 (2.57:1)
B.	Working Statutory Corporations												
	TRANSPORT												
1	Andhra Pradesh State Road Transport Corporation	14020.39	6107.00			20127.39			30973.00	10600.00	98968.65	109568.65	5.44:1 (5.35:1)
	Total	14020.39	6107.00			20127.39			30973.00	10600.00	98968.65	109568.65	5.44:1 (5.35:1)
	FINANCING												
2	Andhra Pradesh State Financial Corporation	6307.46	2887.36		27.17	9221.99			25757.74	194.00	114040.96	114234.96	12.39:1 (11.55:1)
	Total	6307.46	2887.36		27.17	9221.99			25757.74	194.00	114040.96	114234.96	12.39:1 (11.55:1)
	AGRICULTURE AND ALLIED												
3	Andhra Pradesh State Warehousing Corporation	380.70	380.70			761.40					133.61	133.61	0.18:1 (0.18:1)
	Total	380.70	380.70			761.40					133.61	133.61	0.18:1 (0.18:1)
	Total: B	20708.55	9375.06		27.17	30110.78			56730.74	10794.00	213143.22	223937.22	7.05:1 (6.88:1)
	Total: (A+B)	584474.14 (20211.00)	94840.08	1411.21	392.73	681118.16 (20211.00)	1441.89 (31.89)	81703.64	396987.26	378873.62	2239299.27	2618172.89	3.53 :1 (2.73:1)

1	2	3(a)	3(b)	3(c)	3(d)	3(e)	4(a)	4(b)	4(c)	4(d)	4(e)	4(f)	5
C	Non-working Government companies												
	AGRICULTURE AND ALLIED												
1	Andhra Pradesh Fisheries Corporation Limited	467.17				467.17				867.30		867.30	1.86:1 (1.86:1)
2	Proddutur Milk Foods Limited	196.10				196.10							
3	Andhra Pradesh Dairy Development Corporation Limited	1499.76 (372.00)				1499.76 (372.00)							
	Total	2163.03 (372.00)				2163.03 (372.00)				867.30		867.30	0.34:1(1.80:1)
	INDUSTRY												
4	AP Small Scale Industries Development Corporation Limited	961.96				961.96				581.36		581.36	0.60:1(0.60:1)
	Total	961.96				961.96				581.36		581.36	0.60:1(0.60:1)
	ENGINEERING												
5	Southern Transformers and Electricals Limited (S)			29.63	28.00	57.63				78.42		78.42	1.36:1 (1.36:1)
6	Allwyn Watches Limited	15.01				15.01				6493.03		6493.03	432.58:1 (3893.90:1)
7	Allwyn Auto Limited	15.01				15.01				1445.00		1445.00	96.27:1 (96:1)
8	Republic Forge Company Limited	707.00			70.00	777.00				5477.00		5477.00	7.05:1 (7:1)
9	Andhra Pradesh Steels Limited (S)			130.23	73.25	203.48				212.00		212.00	1.04:1 (1.04:1)
10	Andhra Pradesh Scooters Limited	647.00			464.19	1111.19				558.95	559.52	1118.47	1.01:1 (1.01:1)_
	Total	1384.02		159.86	635.44	2179.32				14264.40	559.52	14823.92	6.55:1 (30.64:1)
	ELECTRONICS												
11	Marine and Communication Electronics (India) Limited (S)			147.00	42.00	189.00				477.00		477.00	2.52:1 (2.52:1)
12	Andhra Pradesh Electronics Development Corporation Limited (S)	1262.42			10.00	1272.42				69.76	10.00	79.76	0.06:1 (0.06:1)
13	Apronix Communications Limited (S)**												
	Total	1262.42		147.00	52.00	1461.42				546.76	10.00	556.76	0.38:1 (0.38:1)
	TEXTILES												
14	Andhra Pradesh State Textile Development Corporation Limited	377.35	2.53			379.88				810.73		810.73	2.13:1[2.07:1]
	Total	377.35	2.53			379.88				810.73		810.73	2.13:1(2.07:1)

1	2	3(a)	3(b)	3(c)	3(d)	3(e)	4(a)	4(b)	4(c)	4(d)	4(e)	4(f)	5
	PUBLIC DISTRIBUTION SYSTEM												
15	Andhra Pradesh Essential Commodities Corporation Limited	112.50				112.50							
	Total	112.50				112.50							
	DRUGS, CHEMICALS AND PHARMACEUTICALS												
16	Hyderabad Chemicals and Fertilizers Limited (S)	25.55		41.50	11.93	78.98				825.00		825.00	10.45:1 (10.45:1)
	Total	25.55		41.50	11.93	78.98				825.00		825.00	10.45:1 (10.45:1)
	FINANCING												
17	Andhra Pradesh Tourism Finance Limited	2.91				2.91							
	Total	2.91				2.91							
	MISCELLANEOUS												
18	Andhra Pradesh State Non Resident Indian Investment Corporation Limited	156.63				156.63							
	Total	156.63				156.63							
	Total - C	6446.37 (372.00)	2.53	348.36	699.37	7496.63 (372.00)				17895.55	569.52	18465.07	2.35:1 (8.95:1)
	GRAND TOTAL (A+B+C)	590920.51 (20583.00)	94842.61	1759.57	1092.10	688614.79 (20583.00)	1441.89 (31.89)	81703.64	396987.26	396769.17	2239868.79	2636637.96	3.93:1 (3.52:1)

Notes:

#Except in respect of companies and corporations which finalise their accounts for 2006-07 (SI No.A-3,10,12,14,16,24,25,26,27,28,29 and 30 and SI No B-1 and 2) figures are provisional and as given by the companies and corporations.

@ Includes bonds, debentures, inter corporate deposits etc.

\$Loans outstanding at the close of 2006-07 represent long term loans only

**No activity since inception and first account not finalised

State Government investment (working PSUs: Rs.9835.59 crore, non-working PSUs: Rs.247.14 crore) was Rs.10082.73 crore; Others: Rs.23375.63 crore. Figure as per Finance Accounts 2006-07 is Rs. 9091.14 crore (Working PSUs Rs: 8944.96 crore, non-working PSUs: Rs.146.18 crore). The difference is under reconciliation.

(s) represents Subsidiary Company

Annexure - 2
(Referred to in paragraphs 1.7, 1.8, 1.14, 1.21 and 1.22)
**Summarised financial results of Government companies and Statutory corporations for the latest year
for which accounts were finalised**

(Figures in column 7 to 12 and 15 are Rupees in lakh)

Sl. No.	Sector and name of Company	Name of Department	Date of incorporation	Period of accounts	Year in which accounts finalised	Net Profit or Loss-	Net impact of Audit comments@		Paid-up capital	Accumulated profit/loss	Capital employed #	Total Return on capital employed	Percentage of total return on capital employed	Arrears of accounts in terms of years	Turn-over	Man power (Nos)
							On profit	On loss								
1	2	3	4	5	6	7	8(a)	8(b)	9	10	11	12	13	14	15	16
A.	Working Government companies															
	AGRICULTURE AND ALLIED															
1	Andhra Pradesh State Agro Industries Development Corporation Limited	Agriculture and Co-operation	05.03.1968	2005-06	2006-07	275.26	0.00	0.00	2150.04	-1773.21	3730.00	275.60	7.39	1	12982.11	284
2	Andhra Pradesh State Irrigation Development Corporation Limited	Irrigation and CAD	07.09.1974	2003-04	2006-07	-557.35	0.00	49.00	12180.90	-6649.52	13275.90	-154.75	0.00	3	409.04	593
3	Andhra Pradesh Meat Development Corporation Limited	Animal Husbandry, Dairy Development and Fisheries	31.10.1977	2006-07	2007-08	-95.46	0.00	0.00	3042.93	-2363.82	1718.31	-62.81	0.00	0	18.08	8
	Total					-377.55	0.00	49.00	17373.87	-10786.55	18724.21	58.04			13409.23	885
	INDUSTRY															
4	Andhra Pradesh Industrial Development Corporation Limited	Industry and Commerce	16.12.1960	2004-05	2007-08	22.84	-4702.00	0.00	12857.84	1696.53	12000.41	758.15	6.32	2	1592.47	99
5	Andhra Pradesh Industrial Infrastructure Corporation Limited	Industry and Commerce	26.09.1973	2005-06	2007-08	635.82	0.00	-40.00	1632.75	0.00	36236.05	4310.82	11.90	1	4347.48	529
6	Leather Industries Development Corporation of Andhra Pradesh Limited	Industry and Commerce	04.10.1973	1999-2000	2007-08	-130.41	0.00	0.00	725.35	-1865.21	-415.72	-97.21	0.00	7	97.45	140

Audit Report (Commercial) for the year ended 31 March 2007

1	2	3	4	5	6	7	8(a)	8(b)	9	10	11	12	13	14	15	16
7	Andhra Pradesh Beverages Corporation Limited	Revenue	23.07.1986	2005-06	2007-08	40.15	0.00	0.00	833.96	48.56	7596.50	40.15	0.53	1	536895.60	917
8	Vizag Apparel Park for Exports*	Industry and Commerce	31.03.2001	First account not finalised					0.00		0.00	0.00	0.00	6	0.00	2
9	Infrastructure Corporation of Andhra Pradesh Limited*	Infrastructure and Investment	31.05.2005	2005-06	2007-08	-106.32	0.00	0.00	500.00	-107.30	-577.05	-106.32	0.00	1	0.00	6
TOTAL						462.08	-4702.00	-40.00	16549.90	36008.63	22914.96	606.67			539114.52	1709
ENGINEERING																
10	Andhra Pradesh Heavy Machinery and Engineering Limited (S)	Energy	01.09.1976	2006-07	2007-08	854.86	-300.72	0.00	1727.18	-408.95	2107.65	916.37	43.48	0	5661.95	561
Total						854.86	-300.72	0.00	1727.18	-408.95	2107.65	916.37	43.48		5661.95	561
HANDLOOM AND HANDICRAFTS																
11	Andhra Pradesh Handicrafts Development Corporation Limited	Industry and Commerce	10.11.1981	2005-06	2007-08	52.96	0.00	0.00	200.36	134.72	490.46	52.96	10.80	1	4280.23	181
Total						52.96	0.00	0.00	200.36	134.72	490.46	52.96	10.80		4280.23	181
FOREST																
12	Andhra Pradesh Forest Development Corporation Limited	Forest, Environment Science and Technology	16.06.1975	2006-07	2007-08	3336.43	0.00	0.00	2070.95	5509.19	19408.56	3627.59	18.69	0	6416.69	921
Total						3336.43	0.00	0.00	2070.95	5509.19	19408.56	3627.59	18.69		6416.69	921
MINING																
13	Andhra Pradesh Mineral Development Corporation Limited	Industry and Commerce	24.02.1961	2004-05	2007-08	2025.50	-339.00	0.00	630.62	4533.79	5100.46	2025.50	39.71	2	5973.61	365
14	Damodar Minerals Private Limited(S)	Industry and Commerce	28-01-2000	2006-07	2007-08	-1.43	0.00	0.00	3.71	-2.09	1.09	-1.43	0.00	0	0.24	8
15	Wolkem Andhra Mining Private Limited(S)	Industry and Commerce	29-11-2000	2003-04	2005-06	0.00	0.00	0.00	2.06	0.00	1.48	0.00	0.00	3	0.00	0
16	The Singareni Collieries Company Limited	Energy	18.11.1920	2006-07	2007-08	11719.94	0.00	0.00	173319.81	11588.91	253942.49	12353.20	4.86	0	441631.92	82224
Total						13744.01	-339.00	0.00	173956.20	16120.61	259045.52	14377.27	44.57		447605.77	82597

1	2	3	4	5	6	7	8(a)	8(b)	9	10	11	12	13	14	15	16
	CONSTRUCTION															
17	Andhra Pradesh State Police Housing Corporation Limited	Home	20.05.1971	2005-06	2006-07	0.00	0.00	0.00	180.74	0.00	0.00	0.00	0.00	1	8475.26	261
18	Andhra Pradesh State Housing Corporation Limited	Housing	05.07.1979	2001-02	2007-08	-28237.61	0.00	1136.00	25.00	-	76786.38	-1375.70	0.00	5	1600.40	3469
19	Andhra Pradesh Urban Finance and Infrastructure Development Corporation Limited	Municipal Administration and Urban Development	12.01.1993	1996-97	2002-03	-6.28	0.00	0.00	15.00	-11.18	2.82	0.00	0.00	10	0.00	4
	Total					-28243.89	0.00	1136.00	220.74	-	76789.20	-1375.70	13.00		10075.66	3734
	DEVELOPMENT OF ECONOMICALLY WEAKER SECTION															
20	Andhra Pradesh State Minorities Finance Corporation Limited	Minorities Welfare	19.01.1985	2001-02	2007-08	-118.85	0.00	0.00	6445.00	-754.17	6126.73	-87.30	0.00	5	86.1	96
	Total					-118.85	0.00	0.00	6445.00	-754.17	6126.73	-87.30	0.00		86.1	96
	PUBLIC DISTRIBUTION SYSTEM															
21	Andhra Pradesh State Civil Supplies Corporation Limited	Food, Civil Supplies and Consumer Affairs	31.12.1974	2004-05	2007-08	773.70	-758.00	0.00	300.00	7849.12	14735.07	774.39	5.26	2	163984.61	1267
	Total					773.70	-758.00	0.00	300.00	7849.12	14735.07	774.39	5.26		163984.61	1267
	SUGAR															
22	The Nizam Sugars Limited	Public Enterprise	17.04.1937	October 2002 to September 2003	2006-07	536.39	286.00	0.00	3400.16	-17857.21	3733.41	2929.49	78.47	4	6398.39	0
	Total					536.39	286.00	0.00	3400.16	-17857.21	3733.41	2929.49	78.47		6398.39	0
	TOURISM															
23	Andhra Pradesh Tourism Development Corporation Limited	Tourism and Culture	18.02.1976	2004-05	2005-06	20.01	0.00	0.00	376.13	-394.33	6697.43	116.94	1.75	2	5728.92	1764
	Total					20.01	0.00	0.00	376.13	-394.33	6697.43	116.94	1.75		5728.92	1764
	POWER															
24	Andhra Pradesh Power Generation Corporation Limited	Energy	29.12.1998	2006-07	2007-08	15215.06	246.00	0.00	210680.01	1018.85	1188328.42	57396.56	4.83	0	419999.51	10804
25	Transmission Corporation of Andhra Pradesh Limited	Energy	29.12.1998	2006-07	2007-08	3566.48	-796.00	0.00	77921.76	23919.09	309804.13	19708.23	6.36	0	61950.42	3718
26	Eastern Power Distribution Company of Andhra Pradesh Limited	Energy	30.03.2000	2006-07	2007-08	1071.98	0.00	0.00	12122.53	2664.22	131023.52	638.99	4.87	0	223639.23	8180

Audit Report (Commercial) for the year ended 31 March 2007

1	2	3	4	5	6	7	8(a)	8(b)	9	10	11	12	13	14	15	16	
27	Southern Power Distribution Company of Andhra Pradesh Limited	Energy	30.03.2000	2006-07	2007-08	5692.25	0.00	0.00	35871.53	7138.25	247807.49	20599.13	8.31	0	245605.78	11429	
28	Central Power Distribution Company of Andhra Pradesh Limited	Energy	30.03.2000	2006-07	2007-08	1259.84	-18463.00	0.00	72847.96	-23556.27	246295.25	9719.86	3.95	0	504760.17	12949	
29	Northern Power Distribution Company of Andhra Pradesh Limited	Energy	30.03.2000	2006-07	2007-08	800.14	0.00	0.00	27476.39	-3660.78	131992.64	9138.34	6.92	0	127924.30	7391	
30	Andhra Pradesh Power Finance Corporation Limited	Energy	12.07.2000	2005-06	2006-07	0.00	0.00	0.00	2900.21	0.00	0.00	0.00	0.00	1	13.52	3	
Total						27605.75	-19013.00	0.00	439820.39	7523.36	2255251.45	117201.11	6.25		1583892.93	54474	
FINANCING																	
31	Andhra Pradesh State Film Television and Theatre Development Corporation Limited	General Administration	10.10.1975	2005-06	2006-07	12.06	0.00	0.00	622.05	150.69	962.09	47.77	4.97	1	936.40	41	
Total						12.06	0.00	0.00	622.05	150.69	962.09	47.77	4.97		936.40	41	
MISCELLANEOUS																	
32	Non Conventional Energy Development Corporation of Andhra Pradesh Limited	Energy	20.10.1969	2003-04	2006-07	0.00	0.00	0.00	21.95	-6.60	0.00	0.00	0.00	3	1565.01	169	
33	Andhra Pradesh Technology Services Limited	Finance and Planning	17.01.1985	2005-06	2006-07	449.91	0.00	0.00	20.00	773.87	806.30	449.91	55.80	1	936.36	116	
34	Andhra Pradesh State Trading Corporation Limited	Industries and Commerce	05.06.1970	2004-05	2007-08	-199.33	0.00	0.00	86.01	-370.73	1454.83	148.26	10.19	2	3108.61	83	
35	Overseas Manpower Company of Andhra Pradesh Limited*	Employment and Training	10.01.2006	First account not finalised							0.00	0.00	0.00	0.00	2	0	12
Total						250.58	0.00	0.00	127.96	396.54	2261.13	598.17	16.55		5609.98	380	
Total: A						18908.54	-24826.72	1145.00	663190.89	-75154.12	2689247.87	139843.77	5.20		2793201.38	148610	
B.	Working Statutory Corporations																
TRANSPORT																	
1	Andhra Pradesh State Road Transport Corporation	Transport, Roads and Buildings	11.01.1958	2006-07	2007-08	-11182.45	0.00	15121.00	20127.39	-139829.34	8775.60	-3548.49	0.00	0	365793.55	115529	
Total						-11182.45	0.00	15121.00	20127.39	-139829.34	8775.60	-3548.49	0.00		365793.55	115529	
FINANCING																	
2	Andhra Pradesh State Financial Corporation	Industries and Commerce	01.11.1956	2006-07	2007-08	815.25	0.00	0.00	9221.99	-8432.41	121691.73	11523.54	9.47	0	14477.41	516	
Total						815.25	0.00	0.00	9221.99	-8432.41	121691.73	11523.54	9.47		14477.41	516	

1	2	3	4	5	6	7	8(a)	8(b)	9	10	11	12	13	14	15	16
	AGRICULTURE AND ALLIED															
3	Andhra Pradesh State Warehousing Corporation Limited	Agriculture and Cooperation	05.08.1958	2003-04	2005-06	988.81	0.00	0.00	761.40	0.34	6056.64	988.91	16.33	3	6215.58	426
	Total					988.81	0.00	0.00	761.40	0.34	6056.64	988.91	16.33		6215.58	426
	Total: B					-9378.39	0.00	15121.00	30110.78	-148261.41	136523.97	8963.96	6.56		386486.54	116471
	Grand Total: A+B					9530.15	-24826.72	16266.00	693301.67	-223415.53	2825771.84	148807.73	5.48		3179687.92	265081
C	Non-working Government companies															
	AGRICULTURE AND ALLIED															
1	Andhra Pradesh Fisheries Corporation Limited	Animal Husbandry Dairy Development and Fisheries	5/7/1974	1-4-02 to 9-5-02	2003-04	0.00	0.00	0.00	467.17	-2174.95	-723.93	-12.52	0.00	Under liquidation since May 2002	0.00	0
2	Proddutur Milk Foods Limited	Animal Husbandry Dairy Development and Fisheries	23.10.1978	1983-84	1990-91	0.00	0.00	0.00	196.10	0.00	0.00	0.00	0.00	23	0.00	0
3	Andhra Pradesh Dairy Development Corporation Limited	Animal Husbandry Dairy Development and Fisheries	07.02.1974	2001-02	2006-07	-0.01	0.00	0.00	1871.76	-522.80	2051.3	-0.01	0.00	5	0.00	0
	Total					-0.01	0.00	0.00	2535.03	-2697.75	1327.37	-12.53	0.00		0.00	0
	INDUSTRY															
4	A.P Small Scale Industrial Development Corporation Limited	Industry and Commerce	18.03.1961	2001-02	2003-04	218.04	0.00	0.00	961.96	-2002.94	292.59	324.50	110.91	Under liquidation since January 2002	2.16	0
	Total					218.04	0.00	0.00	961.96	-2002.94	292.59	324.50	110.91		2.16	0
	ENGINEERING															
5	Southern Transformers and Electricals Limited(S)	Industry and Commerce	21.09.1976	1993-94	1996-97	-56.82	0.00	0.00	57.63	-578.07	-145.48	-20.64	0	13	0.00	0
6	Allwyn Watches Limited	Industry and Commerce	19.03.1993	1998-99	2002-03	-7068.89	0.00	0.00	15.01	-24870.26	9574.51	-3002.61	0	Under liquidation since December 2006	1300.27	0

Audit Report (Commercial) for the year ended 31 March 2007

1	2	3	4	5	6	7	8(a)	8(b)	9	10	11	12	13	14	15	16
7	Allwyn Auto Limited	Industry and Commerce	31.05.1993	1994-95	1997-98	-645.65	0.00	0.00	15.01	-1353.79	-296.68	-523.53	0	12	0.00	0
8	Republic Forge Company Limited	Industry and Commerce	15.04.1957	1991-92	1993-94	-334.00	0.00	0.00	777.00	-2341.00	882.00	-26.00		Under liquidation since April 1998	0.00	0
9	Andhra Pradesh Steels Limited (S)	Industry and Commerce	16.11.1973	1991-92	1993-94	-208.55	0.00	0.00	203.48	-650.69	-251.47	-168.19		Under liquidation since April 1996	0	0
10	Andhra Pradesh Scooters Limited	Industry and Commerce	21.08.1974	1992-93	1993-94	-370.02	0.00	0.00	1111.19	-3449.34	-379.06	-225.78		Under liquidation since August 1994	0.00	0
Total						-8683.93	0.00	0.00	2179.32	-33243.15	9383.82	-3966.75			1300.27	0
ELECTRONICS																
11	Marine and Communication Electronics (India) Limited (S)	Industry and Commerce	29.08.1974	1992-93	1994-95	-470.00	0.00	0.00	189.00	-421.00	723.00	-329.00		Under liquidation since November 1996	0.00	0
12	Andhra Pradesh Electronics Development Corporation Limited	Industry and Commerce	21.11.1980	2002-03	2006-07	-74.81	0.00	0.00	1272.42	-1073.74	367.99	-74.81	0	Under liquidation since September 2002	0	0
13	Apronix Communications Limited (S)*	Industry and Commerce	27.02.1984			0.00	0.00	0.00	0	0	0	0		23	0.00	0
Total						-544.81	0.00	0.00	1461.42	-1494.74	1090.99	-403.81			0.00	0
TEXTILES																
14	Andhra Pradesh State Textile Development Corporation Limited	Industry and Commerce	31.05.1974	1993-94	2007-08	48.12	0.00	0.00	377.95	-517.68	559.78	62.07	11.09	Under Liquidation since February 2002	381.29	0
Total						48.12	0.00	0.00	377.95	-517.68	559.78	62.07			381.29	0

1	2	3	4	5	6	7	8(a)	8(b)	9	10	11	12	13	14	15	16
PUBLIC DISTRIBUTION SYSTEM																
15	Andhra Pradesh Essential Commodities Corporation Ltd.	Food, Civil Supplies and Consumer Affairs	21.04.1984	2002-03	2007-08	-2.25	0.00	0.68	112.50	957.67	1071.67	-2.25	0	under merger with APSCSC Ltd.	0	0
Total						-2.25	0.00	0.68	112.50	957.67	1071.67	-2.25	0.00		0.00	0
DRUGS, CHEMICALS AND PHARMACEUTICALS																
16	Hyderabad Chemicals and Fertilizers Limited (S)	Agriculture and Co-operation	September, 1942	1984-85	1986-87	61.92	0.00	0.00	78.48	-63.23	-133.55	-27.67		Under liquidation since June 1987	0.00	0
Total						61.92	0.00	0.00	78.48	-63.23	-133.55	-27.67	0.00		0.00	0
FINANCING																
17	Andhra Pradesh Torisum Finance Limited	Youth advancement, Tourism & Culture	07.03.2001	2002-03	2004-05	10.60	0	0.00	200.00	6.60	205.20	10.60	5.17	3	10.80	0
Total						10.60	0.00	0.00	200.00	6.60	205.20	10.60	5.17		10.80	0
MISCELLANEOUS																
18	Andhra Pradesh Non Resident Indian Investment Corporation Ltd.	Industries and Commerce	18.03.1981	2002-03	2006-07	-0.10	0	0.00	156.63	-353.39	-215.67	-0.10		Under Liquidation since May 2002	0.00	0
Total						-0.10	0.00	0.00	156.63	-353.39	-215.67	-0.10	-	-	0	0
Total: C						-8926.59	0.00	0.68	8063.29	-39408.61	13582.20	-4015.94	-	-	1694.52	0
GRAND Total A+B+C						637.73	-24826.72	16266.68	701364.96	-26282.14	2839354.04	144781.79	5.33	-	3181382.44	265081

@ Net impact of comments on the accounts on profit/loss (-) indicates decrease (+) indicates increase in profit and loss of the respective PSUs.

Capital employed represents net fixed assets (including capital work in progress) plus working capital except in case of finance companies/corporations where the capital employed is worked out as a mean of aggregate of the opening and closing balances of paid up capital, free reserves, bonds, deposits and borrowings (including refinance).

* First account not finalised.

Companies at Sl.No. C-1,4,6,8,9,10,11,12,14,16 and 18 are under liquidation, Sl.No. C-5,7 and 17 are under closure and Sl.No. C-15 is under merger.

Companies at Sl.No. A-17,30 and 32 are working on 'no profit no loss' basis.

(S) Represents subsidiary company.

Annexure – 3

(Referred to in paragraph 1.6)

Statement showing subsidy/grants received, guarantees received, waiver of dues, loans on which moratorium allowed and loans converted into equity during the year and subsidy receivable and guarantees outstanding at the end of March 2007

(Figures in columns 3(a) to 7 are Rupees in lakh)

Sl. No	Name of the Public Sector Undertaking sector-wise	Subsidy and grants received during the year				Guarantees received during the year and outstanding at the end of the year**					Waiver of dues during the year				Loans on which moratorium allowed during the year	Loans converted into equity during the year
		Central Government	State Government	Others	Total	Cash credit from banks	Loans from other sources	Letters of credit opened by banks in respect of imports	Payment obligation under agreement with foreign consultants or contracts	Total	Loans repayment written off	Interest waived	Penal interest waived	Total		
(1)	(2)	3(a)	3(b)	3(c)	3(d)	4(a)	4(b)	4(c)	4(d)	4(e)	5(a)	5(b)	5(c)	5(d)	(6)	(7)
A.	A. Working Government Companies															
	Agriculture and Allied															
1.	Andhra Pradesh State Irrigation Development Corporation Limited	--	10326.75	--	10326.75	--	--	--	--	--	--	--	--	--	--	--
	Sector Wise Total	--	10326.75	--	10326.75	--	--	--	--	--	--	--	--	--	--	--
	Industry															
2.	Andhra Pradesh Industrial Development Corporation Limited	--	--	--	--	--	Nil (2313.23)	--	--	Nil (2313.23)	--	--	--	--	--	--

Annexure

(1)	(2)	3(a)	3(b)	3(c)	3(d)	4(a)	4(b)	4(c)	4(d)	4(e)	5(a)	5(b)	5(c)	5(d)	(6)	(7)
3.	Andhra Pradesh Industrial Infrastructure Corporation Limited	--	400.00	--	400.00	--	Nil (392.75)	--	--	Nil (392.75)	--	--	--	--	--	--
4.	Leather Industries Development Corporation of Andhra Pradesh Limited	126	167.25	--	293.25	--	--	--	--	--	--	--	--	--	--	--
5.	Andhra Pradesh Beverages Corporation Limited	--	--	--	--	-- (10000.00)	--	--	--	-- (10000.00)	--	--	--	--	--	--
6.	Vizag Apparal Park for Exports	66.73	100.00	--	166.73	--	--	--	--	--	--	--	--	--	--	--
	Sector Wise Total	192.73	667.25	--	859.98	-- (10000.00)	Nil (2705.98)	--	--	Nil (12705.98)	--	--	--	--	--	--
Engineering																
7.	Andhra Pradesh Heavy Machinery and Engineering Limited (S)	--	--	--	--	Nil (318.87)	--	148.77 (65.66)	--	148.77 (384.53)	--	--	--	--	--	--
	Sector Wise Total	--	--	--	--	Nil (318.87)	--	148.77 (65.66)	--	148.77 (384.53)	--	--	--	--	--	--
Handloom and Handicrafts																
8.	Andhra Pradesh Handicrafts Development Corporation Limited	70.97	--	--	70.97	--	--	--	--	--	--	--	--	--	--	--
	Sector-wise total	70.97	--	--	70.97	--	--	--	--	--	--	--	--	--	--	--

Audit Report (Commercial) for the year ended 31 March 2007

(1)	(2)	3(a)	3(b)	3(c)	3(d)	4(a)	4(b)	4(c)	4(d)	4(e)	5(a)	5(b)	5(c)	5(d)	(6)	(7)
	Forest															
9.	Andhra Pradesh Forest Development Corporation Limited.	171.53	--	--	171.53	--	--	--	--	--	--	--	--	--	--	--
	Sector- wise Total	171.53	--	--	171.53	--	--	--	--	--	--	--	--	--	--	--
	Mining															
10.	The Singareni Collieries company Limited	3088.49	--	--	3088.49	--	--	--	--	--	--	--	--	--	--	--
	Sector-wise total	3088.49	--	--	3088.49	--	--	--	--	--	--	--	--	--	--	--
	Construction															
11.	Andhra Pradesh State Police Housing Corporation	--	518.61	--	518.61	--	-- (570.28)	--	--	-- (570.28)	--	--	--	--	--	--
12.	Andhra Pradesh State Housing Corporation	32171.07	52146.73	--	84317.80	24000 -	(166301.03)	--	--	24000.00 (166301.03)	--	--	--	--	--	--
13.	Andhra Pradesh Urban Finance and Infrastructure Development Corporation Limited	8837.00	5751.52	--	14588.52	--	-- (55864.96)	--	--	-- (55864.96)	--	--	--	--	--	--
	Sector-wise total	41008.06	58416.86	--	99424.93	24000	-- (222736.27)	--	--	24000.00 (222736.27)	--	--	--	--	--	--
	Development of Economically Weaker Section															
14.	Andhra Pradesh State Minorities Finance Corporation Limited	--	3425.00	--	3425.00	--	Nil (2000.00)	--	--	Nil (2000.00)	--	--	--	--	--	--
	Sector-wise total	--	3425.00	--	3425.00	--	Nil (2000.00)	--	--	Nil (2000.00)	--	--	--	--	--	--

Annexure

(1)	(2)	3(a)	3(b)	3(c)	3(d)	4(a)	4(b)	4(c)	4(d)	4(e)	5(a)	5(b)	5(c)	5(d)	(6)	(7)
Public Distribution System																
15.	Andhra Pradesh State Civil Supplies Limited	538.41	71627.00	--	72165.41	--	--	--	--	--	--	--	--	--	--	--
Sector-wise total		538.41	71627.00	--	72165.41	--	--	--	--	--	--	--	--	--	--	--
Sugar																
16.	The Nizam Sugars Limited	--	--	--	--	--	(5.00)	--	--	(5.00)	--	--	--	--	--	--
Sector-wise total		--	--	--	--	--	(5.00)	--	--	(5.00)	--	--	--	--	--	--
Tourism																
17.	Andhra Pradesh Tourism Development Corporation Limited	454.18	1151.32	--	1605.50	--	--	--	--	--	--	--	--	--	--	--
Sector-wise total		454.18	1151.32	--	1605.50	--	--	--	--	--	--	--	--	--	--	--
Power																
18.	Andhra Pradesh Power Generation Corporation Limited	--	--	--	--	(36000.00)	(707961.00)	--	--	(743961.00)	--	--	--	--	75000.00	--
19.	Transmission Corporation of Andhra Pradesh Limited	--	--	--	--	--	23719.17 (159620.22)	--	--	23719.17 (159620.22)	--	--	--	--	58793.21	--
20.	Eastern Power Distribution Company of Andhra Pradesh Limited	--	827.20	--	827.20	--	--	--	--	--	--	--	--	--	8928.60	--

Audit Report (Commercial) for the year ended 31 March 2007

(1)	(2)	3(a)	3(b)	3(c)	3(d)	4(a)	4(b)	4(c)	4(d)	4(e)	5(a)	5(b)	5(c)	5(d)	(6)	(7)
21.	Southern Power Distribution Company of Andhra Pradesh Limited	--	61192.80	--	61192.80	--	38428.80 (37255.86)	--	--	38428.80 (37255.86)	--	--	--	--	26856.10	--
22.	Central Power Distribution Company of Andhra Pradesh Limited	--	49865.20	--	49865.20	--	--	--	--	--	--	--	--	--	--	--
23.	Northern Power Distribution Company of Andhra Pradesh Limited	--	83887.60	--	83887.60	--	8793.30 (25308.20)	--	--	8793.30 (25308.20)	--	--	--	--	26489.23	--
24.	Andhra Pradesh Power Finance Corporation Limited	--	69139.00	--	69139.00	--	50000.00 (589024.00)	--	--	50000.00 (589024.00)	--	--	--	--	--	--
	Sector-wise total	--	239595.00	--	239595.00		120941.27 (36000) (1519169.28)	--	--	120941.27 (1555169.28)	--	--	--	--	196067.14	--
Financing																
25.	Andhra Pradesh State Film, Television and Theatre Development Corporation Limited	--	20.88	--	20.88	--	--	--	--	--	20.41	76.17	--	96.58	--	--
	Sector-wise total	--	20.88	--	20.88	--	--	--	--	--	20.41	76.17	--	96.58	--	--
Miscellaneous																
26.	Non Conventional Energy Development Corporation of Andhra Pradesh Limited Limited	546.00	388.94	--	934.94	--	--	--	--	--	--	--	--	--	--	--

Annexure

(1)	(2)	3(a)	3(b)	3(c)	3(d)	4(a)	4(b)	4(c)	4(d)	4(e)	5(a)	5(b)	5(c)	5(d)	(6)	(7)
27.	Overseas Manpower Corporation Andhra Pradesh Limited	50.00	--	--	50.00	--	--	--	--	--	--	--	--	--	--	--
	Sector-wise total	596.00	438.94		984.94				--			--	--	--	--	--
	Total A	46120.38	410935.80		457056.18	24000 (46318.87)	120941.27 (1746616.53)	148.77 (65.66)		145090.04 (1793001.06)	20.41	76.17	--	96.58	196067.14	--
B	Working Statutory Corporations															
28.	Andhra Pradesh State Road Transport Corporation	--	40535.00	--	40535.00	--	--	--	--	--	--	--	--	--	--	--
	Sector-wise total	--	40535.00	--	40535.00	--	--	--	--	--	--	--	--	--	--	--
	Financing															
29.	Andhra Pradesh State Financial Corporation	--	--	--	--	--	6315.53 (34862.33)	--	--	6315.53 (34862.33)	--	--	--	--	--	--
	Sector-wise total	--	--	--	--	--	6315.53 (34862.33)	--	--	6315.53 (34862.33)	--	--	--	--	--	--
	Total B	--	40535.00		40535.00	--	6315.53 (34862.33)	--	--	6315.53 (34862.33)	--	--	--	--	--	--
	Grand Total A+B	46120.38	451470.80		497591.18	24000 (46318.87)	127256.80 (1781478.86)	148.77 (65.66)	--	151405.57 (1827863.39)	20.41	76.17	--	96.58	196067.14	--

**** Figures in bracket indicate guarantees outstanding at the end of the year**

Annexure – 4

(Referred to in paragraph 1.8)

Financial position of statutory corporations

(Rupees in crore)

1. Andhra Pradesh State Road Transport Corporation			
Particulars	2004-05	2005-06	2006-07
A. Liabilities			
Capital (including capital loan and equity capital)	201.27	201.27	201.27
Borrowings –Government	106.00	106.00	106.00
Others	1219.89	1051.00	989.68
Funds [@] (including expenditure from betterment fund)	237.30	210.29	189.71
Trade dues and other current liabilities (including provisions)	609.38	617.51	1134.92
Total-A	2373.84	2186.07	2621.58
B. Assets			
Gross block	2059.74	2133.15	2231.29
Less: Depreciation	1426.90	1558.82	1667.12
Net fixed assets	632.84	574.33	564.17
Capital works-in-progress (including cost of chassis)	41.62	5.32	24.50
Investments	0.62	0.62	0.62
Current assets, loans and advances	455.08	319.33	634.00
Accumulated loss	1243.68	1286.47	1398.29
Total-B	2373.84	2186.07	2621.58
C. Capital employed[#]	520.15	281.47	87.75

[@] Excluding depreciation funds.

[#] Capital employed represents net fixed assets (including works-in-progress) plus working capital. While working out working capital, the element of interest on loans is included in Current Liabilities.

(Rupees in crore)

2. Andhra Pradesh State Financial Corporation			
Particulars	2004-05	2005-06	2006-07
A. Liabilities			
Paid-up capital	92.22	92.22	92.22
Reserve fund and other reserves and surplus	20.15	20.15	21.57
Borrowings:			
(i) Bonds and Debentures	269.19	187.42	180.27
(ii) Fixed Deposits	70.95	73.16	46.58
(iii) SIDBI	624.38	741.40	761.65
(iv) State Government	1.94	1.94	1.94
(v) Industrial Development Bank of India	11.40	11.40	11.40
(vi) Others	-	50.00	140.50
Other liabilities and provisions	102.58	106.77	163.30
Total-A	1192.81	1284.46	1419.43
B. Assets			
Cash and bank balances	54.85	90.12	101.38
Investments	0.54	0.54	1.14
Loans and advances	932.35	1012.65	1159.28
Net fixed assets	19.91	20.84	20.78
Other assets	50.46	50.20	52.53
Accumulated loss	134.70	110.11	84.32
Total-B	1192.81	1284.46	1419.43
C. Capital employed[@]	1105.70	1149.43	1216.91

[@] Capital employed represents a mean of aggregate of opening and closing balances of paid up capital, reserves (other than those which have been funded specially and backed by investments outside), bonds, deposits and borrowings(including refinance).

(Rupees in crore)

3. Andhra Pradesh Warehousing Corporation			
Particulars	2001-02	2002-03	2003-04
A. Liabilities			
Paid-up capital	7.61	7.61	7.61
Reserves and surplus (incl. Subsidy)	50.64	48.56	51.62
Borrowings (Others)	--	1.76	1.34
Trade dues and current liabilities (including provision)	8.95	21.35	26.35
Total-A	67.20	79.28	86.92
B. Assets			
Gross block	27.40	34.90	37.50
Less: Depreciation	10.97	18.32	23.00
Net fixed assets	16.43	16.58	14.50
Current assets, loans and advances	50.77	62.70	72.42
Total-B	67.20	79.28	86.92
C. Capital employed[@]	58.25	57.93	60.57

[@] Capital employed represents the net fixed assets (including capital works in progress) plus working capital.

Annexure – 5

(Referred to in paragraph 1.8)

Statement showing working results of statutory corporations

(Rupees in crore)

1. Andhra Pradesh State Road Transport Corporation				
	Particulars	2004-05	2005-06	2006-07
1	Operating:			
	(a) Revenue	2936.64	3192.45	3657.94
	(b) Expenditure	3376.87	3655.74	4068.56
	(c) Surplus(+)/Deficit(-)	(-) 440.23	(-) 463.29	(-)410.62
2	Non-operating:			
	(a) Revenue	275.73	482.08	528.27
	(b) Expenditure	104.95	86.49	77.06
	(c) Surplus (+)/ Deficit (-)	(+) 170.78	395.59	451.21
3	Total			
	(a) Revenue	3212.37	3674.53	4186.21
	(b) Expenditure	3481.82	3742.23	4145.62
	(c) Net of prior period adjustments	44.60	24.92	(-)152.41
	(d) Net Profit (+)/Loss(-)*	(-) 224.85	(-) 42.78	(-)111.82
4	Interest on capital and loans	102.95	84.60	76.34
5	Total return on Capital employed[@]	(-) 121.90	41.82	(-)35.48
6	Percentage of return on capital employed	--	14.86	--

* Excluding prior period adjustments.

[@] Total return on capital employed represents net surplus/deficit plus total interest charged to Profit and Loss Account (less interest capitalised).

(Rupees in crore)

2. Andhra Pradesh State Financial Corporation				
	Particulars	2004-05	2005-06	2006-07
1	Income			
	(a) Interest on loans	120.29	129.95	144.77
	(b) Other income	9.76	8.56	13.84
	Total-1	130.05	138.51	158.61
2	Expenses			
	(a) Interest on long term and short term loans	95.50	81.57	80.64
	(b) Other expenses	27.64	49.11	69.82
	Total -2	123.14	130.68	150.46
3	Profit before tax (1-2)	6.91	7.83	8.15
4	Prior period adjustments	(+) 182.09	(-) 0.36	--
5	Provision for tax	0.54	0.79	1.66
6	Profit (+)/Loss (-) after tax	(+) 8.07	(+) 6.68	6.49
7	Other appropriations	(-) 5.08	(+) 17.90	20.72
8	Profit (+)/Loss (-) after other appropriation	(+) 13.15	(+) 24.58	27.21
9	Total return on capital employed^{***}	102.40	112.31	115.24
10	Percentage of return on capital employed	9.26	9.77	9.47

*** Total return on capital employed represents net surplus/deficit plus total interest charged to Profit and Loss Account (less interest capitalised).

(Rupees in crore)

3. Andhra Pradesh State Warehousing Corporation				
	Particulars	2001-02	2002-03	2003-04
1	Income			
	(a) Warehousing charges	35.11	47.28	62.16
	(b) Other income	3.11	3.87	4.73
	Total-1	38.22	51.15	66.89
2	Expenses			
	(a) Establishment charges	5.75	7.30	9.59
	(b) Other expenses	10.34	36.83	47.41
	Total -2	16.09	44.13	57.00
3	Profit (+)/Loss (-) before tax	22.13	7.02	9.89
4	Provision for tax	--	2.32	3.62
5	Prior period adjustments	--	(-) 0.42	(+) 0.15
6	Other appropriations	--	(Cr.)1.45	4.89
7	Amount available for dividend	--	5.73	1.53
8	Dividend for the year	--	5.71	1.52
9	Total return on capital employed*	22.13	7.07	9.89
10	Percentage of return on capital employed	38.00	12.11	16.33

* Total return on capital employed represents net surplus/deficit plus total interest charged to Profit and Loss Account (less interest capitalised).

Annexure – 6

(Referred to in paragraph 1.13)

Statement showing operational performance of Statutory corporations

Andhra Pradesh State Road Transport Corporation			
Particulars	2004-05	2005-06	2006-07
Average number of vehicles held	19208	19499	19350
Average number of vehicles on road	19105	19357	19232
Percentage of utilisation of vehicles	99.42	99.27	99.39
Number of employees	117400	115946	115529
Employee-vehicle ratio	6.14:1	5.09:1	6.00:1
Number of routes operated at the end of the year	8045	7641	7363
Route kilometers (in Crore)	9.02	9.03	9.78
Kilometers operated (in Crore)			
(a) Gross	233.00	238.61	245.37
(b) Effective	232.50	238.08	244.73
(c) Dead	0.50	0.53	0.64
Percentage of dead kilometers to gross kilometers	0.21	0.22	0.26
Average kilometers covered per bus per day	332	335.00	347
Average operating revenue per kilometer (paise)	1383	1544	1714
Average operating revenue per kilometer over previous year's income (per cent)	100.44	103.75	111.64
Average expenditure per kilometer (paise)	1480	1562	1678
Increase in operating expenditure per kilometer over previous year's expenditure (per cent)	6.02	1.06	1.07
Profit (+)/Loss (-) per kilometer (paise)	(-) 97	(-) 18	36
Number of operating Depots	212	212	204
Average number of break-downs per lakh kilometers	1.20	1.28	1.33
Average number of accidents per lakh kilometers	0.10	0.11	0.12
Passenger kilometers operated (in crore)	7680.95	8204.59	8785.57
Occupancy ratio	62	65	68
Kilometers obtained per liter of:			
(a) Diesel oil	5.29	5.27	5.26
(b) Engine oil	4238	4540	43.91

(Rupees in crore)

2. Andhra Pradesh State Financial Corporation						
Particulars	2004-05		2005-06		2006-07	
	Number	Amount	Number	Amount	Number	Amount
Applications pending at the beginning of the year	28	55.20	46	62.81	20	53.33
Applications received	1241	614.96	1180	667.10	1267	877.00
Total	1269	670.16	1226	729.91	1287	930.33
Applications sanctioned	1156	464.69	1150	585.97	1200	704.75
Applications cancelled/withdrawn/ rejected/reduced	67	131.30	56	90.61	53	160.86
Applications pending at the close the year	46	62.81	20	5.33	34	59.93
Loans disbursed	--	348.87	--	421.72	-	523.14
Loans outstanding at the close of the year	--	1244.95	--	1278.70	-	1400.32
Amount overdue for recovery at the close of the year						
(a) Principal	--	310.65	--	260.32	-	213.92
(b) Interest	--	123.13	--	88.52	-	70.62
Total	--	433.78	--	348.84	-	284.54
Amount involved in recovery certificate cases	---	111.28	--	113.70	-	109.40
Percentage of default to the total loans outstanding	--	34.84	--	27.28	-	20.32

3. Andhra Pradesh Warehousing Corporation			
Particulars	2001-02	2002-03	2003-04
Number of stations covered	86	131	142
Storage capacity created up to the end of the year (tonnes in lakh)	131	206	250
(a) Owned	4.20	4.64	4.82
(b)Hired	6.72	12.55	16.84
Total	10.92	17.19	21.66
Average capacity utilised during the year (tonnes in lakh)	10.19	15.14	19.12
Percentage of utilisation	93	88	88
Average revenue per tonne	375.00	338.00	362.00
Average expenses per tonne	157.80	291.44	262.00
Profit(+)/Loss(-) per tonne (Rupees)	(+) 217.20	(+) 46.56	(+) 99.40

Annexure - 7

(Referred to in paragraph 1.15)

Statement showing status of implementation of reform programme against each commitment made in the MoU

Sl No.	Commitment as per MOU	Targeted completion Schedule	Status (As on 30 September 2007)
	Commitments made by the State Government		
1.	Reduction in Transmission and Distribution losses	From 29.6 per cent to 19.5 per cent by 2006-2007	Reduced to 18.67 per cent
2.	100 per cent electrification of all villages		Achieved
3.	(a) 100 per cent metering of all distribution feeders (b) 100 per cent metering of 11 KV feeders	December 2001 March 2001	11214 numbers 11KV distribution feeders have been metered.
4.	100 per cent metering of all consumers	March 2002	All the 163,02,242 numbers non agricultural services have been metered. 3,36,102 numbers agricultural service out of total agricultural services of 25,51,389 have been metered.
5.	Others		
	(i) Conversion of distribution companies into Joint Venture Companies	June 2002	Not yet done
	(ii) Energy Audit at all Levels	December 2001	
	(a) 220 KV/132 KV boundary metering points between AP GENCO and AP TRANSCO		85 Numbers 0.2 class accuracy meters have been installed.
	(b) at 485 inter - face points between AP TRANSCO and DISCOMS		439 Numbers of 0.2 class accuracy and 561 Numbers 0.5 class accuracy meters have been installed.
	(c) at LT side of Agricultural transformers		Meters provided to 53307 Numbers agricultural transformers.
	Commitments made by the Central Government		
6.	Securities outstanding dues of CPSUs	Government of Andhra Pradesh has issued Notification for issuance of Bonds to the tune of Rs.2436.09 crore through RBI to CGS vide GOAP Lr No:3321/706/A2/W&M/2003 dated 18.08.2003	RBI has to issued bonds to CGS through DMA For Rs. 2436.09 crore.
7.	Supply of additional power	GOI will allocate additional 140 MW of power on completion of three transmission lines namely (1) 400-KV Khammam-Hyderabad double circuit Line, (2) 220 KV Nidadavolu-Bhimadolu and (3) Lower Sileru-Bommuru Double Circuit Lines	(1.) Commissioned on 29-09-2001 (2.) Charged on 27-01-2002 (3.) Charged on 31-03-2003
	Others		
8.	Allocation of additional power from new central generation stations to Discoms directly	After achieving financial capability	All PPAs including those of CGS allocated to Dicoms from June 2006.
	General		
9.	Monitoring of MoU	Once in 3 months	Distribution Reforms Committee was constituted to conduct the meetings once in every three months. The Committee so far held ten meetings on 20-12-2002, 07-04-2003, 06-08-2003, 10-11-2003, 17-09-2004 , 20-09-2005, 24-02-2006, 19-06-2006, 18.11.06 and 18.4.2006. T&D losses are being monitored monthly.

Annexure – 8

(Referred to in paragraph 1.31)

**Statement showing paid-up capital, investment and summarised working results of 619-B companies as per their latest finalised accounts
(Figures in column 5 to 21 are Rupees in lakh)**

SLNo.	Name of the Company	Status Working (W)/ nonworking (NW)	Year of account	Paid up capital	Equity by				Loans by			Grants by			Total investment by way of equity, loans and grants				Profit (+)/ loss (-)	Accumulated profit (+)/ accumulated loss (-)
					State Govt.	State Govt. Companies	Central Govt and their Companies	Others	State Govt.	State Govt. Companies	Central Govt and their companies	State Govt.	State Govt. Companies	Central Govt and their companies	State Govt.	State Govt. Companies	Central Govt and their companies	Others		
(1)	(2)	(3)	(4)	(5)	(6)	(7)	(8)	(9)	(10)	(11)	(12)	(13)	(14)	(15)	(16)	(17)	(18)	(19)	(20)	(21)
1.	Suganthi Alloy Castings Ltd.	NW	1983-84	20.00	--	10.00 (50)	4.00 (20)	6.00 (30)	--	--	--	--	--	--	--	10.00	4.00	6.00	(-)16.00	(-) 26.00
2.	P.J.Chemicals Ltd.	NW	1989-90	38.00	--	16.00 (42)	22.00 (58)	--	--	--	--	--	--	--	--	16.00	22.00	--	(-)51.00	(-) 356.00
3.	Andhra Pradesh Automobile Tyres and Tubes Ltd.	NW	1992-93	75.00	--	73.00 (97)	--	2.00 (3)	--	--	--	--	--	--	--	73.00	--	2.00	(-)2.00	(-)77.00
4.	Krishi Engines Ltd.	NW	1984-85	52.00	--	29.00 (56)	10.00 (19)	13.00 (25)	--	--	--	--	--	--	--	29.00	10.00	13.00	(-)52.00	(-) 354.00
5.	Vidyuth Steels Ltd.	NW	1985-86	88.00	--	29.00 (33)	31.00 (35)	28.00 (32)	--	--	--	--	--	--	--	29.00	31.00	28.00	(-)40.00	(-) 155.00
6.	Golkonda Abrasives Ltd.	NW	1997-98	55.00	--	38.00 (69)	--	17.00 (31)	--	--	--	--	--	--	--	38.00	--	17.00	(-)1.00	(-)744.00
7.	Andhra Pradesh State Seeds Development Corporation Ltd.	W	2006-07	277.30	107.51 (39)	--	90.00 (32)	79.79 (29)	13362.07	--	--	--	--	--	13469.58	--	90.00	79.79	191.47	175.00
8.	Hyderabad Information Technology Venture Enterprises Limited	W	2006-07	25.00	--	12.50 (50)	12.50 (50)	--	--	--	--	--	--	--	--	12.50	12.50	--	11.41	44.92
9.	Cyberabad Trustee Company Pvt Limited	W	2006-07	5.00	--	2.50 (50)	2.50 (50)	--	--	--	--	--	--	--	--	2.50	2.50	--	(-)0.11	(-)0.01
	TOTAL			635.30	107.51	210.00	172.00	145.79	13362.07			-			13469.58	210.00	172.00	145.79		

Figures in brackets indicate the percentage of equity contribution with reference to total equity capital.

Annexure-9
(Referred to in paragraph 2.1.8)
Statement showing the details of capital outlay and actual expenditure
incurred in respect of Projects executed by the Company during 2002-07

(Rupees in crore)

Sl No	Project	Date of Approval of Projects	Implementation period.	Original Project cost	Revised Project cost.	Actual expenditure incurred as at 31.3.2007	Land acquired (in acres)	Financial Progress (vii/vi* 100) percentage
(i)	(ii)	(iii)	(iv)	(v)	(vi)	(vii)	(viii)	(ix)
1.	Growth Center, Bobbili.	30.3.1992	15 years	25.89	35.76	10.62	1239.33	30.00
2.	Growth Center, Hindupur	30.3.1992	15 years	27.28	27.28	3.80	733.26	13.92
3.	Growth Center, Ongole	30.3.1992	15 years	26.22	27.87	17.01	1307.00	56.40
4.	Growth Center, Jedcherla	20.9.2003	15 years	30.05	30.05	7.21	954.22	23.99
5.	IIDC Tada, Nellore.	9.11.1998	8 years	4.05	4.05	1.94	138.07	47.90
6.	IIDC Nandyal, Kurnool.	2.7.1994	8 years	4.77	2.36	1.75	68.55	74.15
7.	Food Processing Industrial Park, Kuppam.	Sept.2000	8 years	9.59	13.88	5.89	182.41	30.33
8.	AP Special Economic Zone Vishakapatnam.	September 2000	N.A	1850.00	1850.00	271.19	9113.00	14.66
9.	Vizag Apparel Park	Sept.2004	18 months	27.53	26.42	4.89	145.60	18.50
10	Apparel Export park, Gundlapochampalli	1995	2 years	14.08	14.08	10.30	171.40	73.15
11	Textile Park, Pashamylaram	August 2000	18 months	13.37	13.37	4.23	50.00	31.64
12	Gangavaram Port Vishakapatnam	6.9.2000	N.A	N.A	N.A	N.A	N.A	N.A
13	Hyderabad Gems SEZ Hyderabad	N.A	N.A	--	N.A	--	200.00	N.A
14	Hardware Park, Hyderabad	22.4.2000	N.A	N.A	N.A	8.67	2090.32	N.A
15	Pharma City, Vizag	10.9.2001	N.A	161.84	161.84		2255.93	N.A
16	Visakhapatnam Industrial Water Supply Scheme, Vizag	August 1995	N.A	611.26	439.26	N.A	1011.44	N.A
17	Hitec City Layout, Hyderabad	30.11.1996	N.A	N.A	N.A	24.13	149.07	N.A
18	IT Park Nanakramguda Hyderabad	16.8.2001	N.A	N.A	N.A	18.20	180.50	N.A
19	IT Park Manikonda, Hyderabad	18.12.2000	N.A	N.A	N.A	1.65	147.69	N.A
20	Integrated convention Centre and Township Project, Hyderabad	Sept 2002	N.A	N.A	N.A	--	531.98	N.A
	Total			2805.93	2646.22	391.48	20669.77	

Annexure- 10
(Referred to in paragraph 2.1.10)
Statement showing the details of allotments made to IT units

Sl. No.	Name of the Unit	Name of the Project	Area Allotted (in acres)	Rate Applicable per acre (Rs in lakh)	Rate charged per acre (Rs in Lakh)	Benefit passed on to the allottees [(V) (VI)] (IV) (Rs.in lakh)
(i)	(ii)	(iii)	(iv)	(v)	(vi)	(vii)
Allotments made with State Government						
1.	Indu Tech zone (P) Ltd. Hyderabad	Hardware Park Hyderabad	250.00	48.56	20.00	7140.00
2.	Brahmani Infra Tech (p) Ltd. Hyderabad	-do-	250.00	48.56	20.00	7140.00
3.	Stargage Properties (p) Ltd. Hyderabad.	-do-	250.00	48.56	20.00	7140.00
4.	Ananth Technologies Hyderabad	-do-	25.00	24.28	4.95	483.25
5.	Hyderabad Gems Special Economic Zone	-do-	75.00	12.00	5.00	525.00
6.	Kanbay Soft Ware India (P) Ltd Hyderabad	-do-	15.00	35.00	29.00	90.00
7.	Visual Soft Technologies Ltd. Hyderabad	-do-	15.00	35.00	29.00	90.00
8.	Amazon IT Services(India) Ltd. Hyderabad.	-do-	10.56	202.34	60.00	1503.11
9.	Microsoft India (R&D) (P) Limited Hyderabad	IT Park Manikonda	12.72	60.00	29.00	394.32
	-do-	-do-	11.48	202.35	29.00	1990.05
	-do-	-do-	5.50	202.35	29.00	953.42
	-do-	-do-	7.05	202.35	29.00	1222.11
10.	Divyasree Holdings (P) Ltd. Bangalore.	Hitec City Layout Madhapur	2.69	505.87	80.00	1145.59
11.	Tourism Dept. Govt. of AP Hyderabad	-do-	14.94	127.50	85.00	634.95
Allotments made as per date of application etc.						
12.	Sri Kiran Technologies Hyderabad	-do-	2.74	60.70	40.47	55.43
13.	Info Vision Technologies Hyderabad	-do-	1.00	60.70	40.47	20.23
14.	Analogic Technomatics (P) Ltd. Hyderabad	-do-	0.82	60.70	40.47	16.58
15.	Padma Power Loom Textile Park, Sholapur	Pashamylaram Textile Park	7.93	16.592	4.048	99.47
Allotments made as per industrial category instead of commercial category						
16	M/s. Varun Motors (p) Ltd, Hyderabad	IT Park Nanakramguda	1.00	404.70	202.35	202.35
		Total	958.43			30845.96

Annexure- 11
(Referred to in paragraph 2.1.26)
Scope of work entrusted to IL&FS and other Consultants.

(I) AP SEZ, Visakhapatnam

IL &FS (Agreement –December, 2000)	KPMG India Pvt Ltd, Chennai. Agreement –October 2000 & 2002
i) Project frame Work -- Establishing strategic and implementation structure of the project.	i) Project conceptualization -- Developing the Road Map for the project development activities. Broad timetable for carrying out the project development activities.
ii) Procurement strategy of Investors. - Assist in project marketing in selecting investor - and developer of the project	ii) Identification of suitable Private Sector infrastructure development partner.
iii) Preparation and implementation of market strategy plans. - Guide the marketing strategy for induction of Investor	iii) Consultancy assignment of for procurement of strategic partner. -- Project Marketing.
iv) Policy and regulatory framework. - Formulation of frame work for regulation and legal reforms and other policy structures	Policy & Regularities frame work Providing suggestions on board policy and legislative framework needed for the project.
v) Project development funding. - To access funding from the India Project Development Fund after strategic investor is identified.	----

(II) Gangavaram Port

IL & FS (Agreements.dt28.12.1999 and 29-11-2000)	L&T Ram boll Consultants (Agreement. July 2002)
Project identification and screening	Phase-I Initial screening and feasibility studies
II. Project development including technical and financial closure	Phase-II Project structuring and procurement of developer
iii) Policy and legislative recommendations	Phase-III Assistance during technical and financial closure.

(III) Pharma City Visakhapatnam

IL & FS (Agreement. Dtd 30th July 2003)	L & T (Feasibility Report July 2002)
Assist in managing the process of induction of technical and other consultants	APIIC selected L & T
Liaison with consultants for assessing the demand	L&T were the consultants. There was no liaison from IL & FS with L&T
Planning and Layout	Planning and layout
Structuring the project and financial analysis	Structuring and financial analysis
Assist APIIC in identifying and interacting with potential private sector participants	Scope of L& T and RPCIL
Legal, technical and investment framework	These functions were carried out by RPCIL
Incorporating SPC	-do-
Marketing	-do-
Environmental and social issues	-do-
Mobilisation of financial closure	-do-

(IV) Integrated convention Centre and township

IL&FS Agreement dated 29-11-2000	Horwath & Ferguson Report (Report dated. 31-5-2002)
Procurement Strategy	Feasibility study and operational reviews.
Legal structure of the project	Financial projections strategic planning, identification of franchise, structuring and negotiating
Approvals	Reports, Market and financial feasibility

Annexure 12
(Referred to in paragraph 2.2.1)
Statement showing the working results of the company

(Rupees in lakh)

	2002-03	2003-04	2004-05	2005-06
A. INCOME				
a) Sales	3634.59	4146.76	5973.61	5834.95
b) Consideration from Raising cum Sale Contract	56.46	57.66	60.54	54.16
c) Other income	417.24	215.74	391.42	263.22
d) Profit on sale of assets	0	0	0.73	0
e) Increase (+) / Decrease (-) in Stock & WIP	-89.00	-293.32	51.07	36.82
f) Prior Period Adjustment	4.41	-24.76	-1.52	-0.4
g) Provision written back	3.07	35.73	74.08	57.73
TOTAL	4026.77	4137.81	6549.93	6246.48
B. EXPENDITURE				
a) Manufacturing & Other expenses				
Personnel cost	582.52	666.59	603.26	732.06
Operational expenses	2618.44	1933.98	3297.95	3080.30
Repairs & Maintenance	25.30	28.84	38.81	38.39
Other Expenses	411.40	1149.94	480.38	483.22
b) Depreciation	35.46	32.10	31.47	38.97
c) Loss on sale of asses	0.32	0.32	0	0
Total	3673.44	3811.77	4451.87	4372.94
Profit Before Tax	353.33	326.04	2098.06	1873.54
Less: Provision for Tax	111.80	106.21	751.66	630.63
Total	241.53	219.83	1346.40	1242.91
Deferred Tax Asset A/c	0	15.81	-30.99	0
Profit After Tax	241.53	235.64	1315.41	1242.91

Annexure 13

(Referred to in paragraphs 2.2.7, 2.2.18 and 2.2.19)

Details of Mining and Quarrying Leases held by A.P.M.D.C.L.

Name of the Mineral	Operating		Non Operating		Total	
	No. of Leases	Area (Ha)	No. of Leases	Area (Ha)	No. of Leases	Area (Ha)
Mining Leases						
1.Barytes	8	163.71	-	-	8	163.71
2.Ball clay	1	14.67	-	-	1	14.67
3.Limestone	2	220.51	-	-	2	220.51
4.Calcite	-	-	2	46.62	2	46.62
5.Moulding sand	1	13.19	-	-	1	13.19
Sub-total	12	412.08	2	46.62	14	458.70
Quarrying Leases						
6.Black Granite	2	13.34	-	-	2	13.34
7.Blue Granite	1	4.00	-	-	1	4.00
8. Black Galaxy Granite	-	-	5	81.66	5	81.66
9.Marble	-	-	1	2.40	1	2.40
10. White Granite	-	-	1	1.00	1	1.00
Sub-total	3	17.34	7	85.06	10	102.40
Total	15	429.42	9	131.68	24	561.10

Annexure 14

(Referred to in paragraph 2.2.8)

Statement showing comparison of targeted and actual production of Barytes between 2002-03 and 2006-07

Year and details	A Grade & A Mixed	B Grade	C+D Waste	Total	Over-burden
1	2	3	4	5	6
2002-03					
1.As per Mining Plan	456000	155000	392000	1003000	8755000
2.As per Annual Plan	480000	144000	336000	960000	6336000
3.Actual Production	378139	67872	208149	654160	5936362
4. Percentage to Mining Plan	82.9	43.8	53.1	65.2	67.8
5. Percentage to Annual Plan	78.8	47.1	61.9	68.1	93.7
6.Difference w.r.t sl.1.	(77861)	(87128)	(183851)	(348840)	(2818638)
7.Difference w.r.t sl.2.	(101861)	(76128)	(127851)	(305840)	(399638)
2003-04					
1.As per Mining Plan	824000	120000	68000	1012000	6685000
2.As per Annual Plan	480000	120000	200000	800000	4400000
3.Actual Production	405017	105787	190360	701164	3951371
4. Percentage to Mining Plan	49.2	88.2	279.9	69.3	59.1
5. Percentage to Annual Plan	84.4	88.2	95.2	87.6	89.8
6.Difference w.r.t sl.1.	(418983)	(14213)	122360	(310836)	(2733629)
7.Difference w.r.t sl.2.	(74983)	(14213)	(9640)	(98836)	(448629)
2004-05					
1.As per Mining Plan	817000	0	246000	1063000	6984000
2.As per Annual Plan	440000	120000	240000	800000	4400000
3.Actual Production	697878	134913	301743	1134534	6496003
4. Percentage to Mining Plan	85.4	0.0	122.7	106.7	93.0
5. Percentage to Annual Plan	158.6	112.4	125.7	141.8	147.6
6.Difference w.r.t sl.1.	(119122)	134913	55743	71534	(487997)
7.Difference w.r.t sl.2.	257878	14913	61743	334534	2096003

1	2	3	4	5	6
2005-06					
1.As per Mining Plan	583000	80000	339000	1002000	6493000
2.As per Annual Plan	720000	180000	300000	1200000	7920000
3.Actual Production	437692	142294	507630	1087616	6596213
4. Percentage to Mining Plan	75.1	177.9	149.7	108.5	101.6
5. Percentage to Annual Plan	60.8	79.1	169.2	90.6	83.3
6.Difference w.r.t sl.1.	(145308)	62294	168630	85616	103213
7.Difference w.r.t sl.2.	(282308)	(37706)	207630	(112384)	(1323787)
2006-07					
1.As per Mining Plan	698000	37000	379000	1114000	2730000
2.As per Annual Plan	675000	202500	472500	1350000	8910000
3.Actual Production	723136	227667	683947	1634750	8599678
4. Percentage to Mining Plan	103.6	615.3	180.5	146.7	315.0
5. Percentage to Annual Plan	107.1	112.4	144.8	121.1	96.5
6.Difference w.r.t sl.1.	25136	190667	304947	520750	5869678
7.Difference w.r.t sl.2.	48136	25167	211447	284750	(310322)
Total					
1.As per Mining Plan	3378000	392000	1424000	5194000	31647000
2.As per Annual Plan	2795000	766500	1548500	5110000	31966000
3.Actual Production	2641862	678533	1891829	5212224	31579627
4. Percentage to Mining Plan	78.2	173.1	132.9	100.4	99.8
5. Percentage to Annual Plan	94.5	88.5	122.2	102.0	98.8
6.Difference w.r.t sl.1.	(736138)	286533	467829	18224	(67373)
7.Difference w.r.t sl.2.	(153138)	(87967)	343329	102224	(386373)

**Mining Plan means the approved mining plan for the relevant period.
Annual Plan means the budgeted plan as per the approval of the board.
Figures shown in brackets represent the shortfall in production.**

Annexure 15
(Referred to in paragraph 2.2.9)

Statement showing difference of margin due to variation in production during 2002-03 and 2006-07

Year and details	A Grade	B Grade	C+D+W	Total-ROM	OB	Total
1	2	3	4	5	6	7
2002-03						
1.Production planned	480000	144000	336000	960000	2880000	
2.Actual Production	378138	67871	208152	654161	2698346	
3.Difference (1-2)	101862	76129	127848	305839	181654	
4.Exp.for actual prodn	275224464	28186917				303411381
5.Excavation Exp for actual prodn				17130814	218806412	235937226
6.Other Exp.for actual prodn(4-5)						67474155
7.Cost per MT for actual prodn(4/2)	727.84	415.3				
8.Excavation Exp.for planned prodn				25139960	233536569	258676529
9.Other Exp.for actual prodn(6)						67474155
10.Total Exp.for planned prodn(8+9)	295851285	30299399				326150684
11.Cost per MT for planned prodn(10/1)	616.36	210.41				
12.Difference in cost (11-7)	111.48	204.89				
13.Average Sale Price	763.83	435.65				
14.Margin for actual production(13-7)	35.99	20.35				
15.Margin for planned prodn(13-11)	147.47	225.24				
16.Difference in Margin (15-14)	111.48	204.89				
17.Actual Qty Sold	395264	81438.94				
18.Total difference for actual qty sold (16x17)	44064031	16686024				60750055
2003-04						
1.Production planned	480000	120000	200000	800000	2000000	
2.Actual Production	405013	102787	190360	698160	1794735	
3.Difference (1-2)	74987	17213	9640	101840	205265	
4.Exp.for actual prodn	257115275	35728392				292843667
5.Excavation Exp for actual prodn				18741765	147250578	165992343
6.Other Exp.for actual prodn(4-5)						126851324
7.Cost per MT for actual prodn(4/2)	634.83	347.59				
8.Excavation Exp.for planned prodn				21475610	164091722	185567332
9.Other Exp.for actual prodn(6)						126851324
10.Total Exp.for planned prodn(8+9)	273335082	39083574				312418656
11.Cost per MT for planned prodn(10/1)	569.45	325.70				
12.Difference in cost (11-7)	65.38	21.89				
13.Average Sale Price	763.64	430.30				
14.Margin for actual production(13-7)	128.81	82.71				
15.Margin for planned prodn(13-11)	194.19	104.60				
16.Difference in Margin (15-14)	65.38	21.89				
17.Actual Qty Sold	442962	106099				
18.Total difference for actual qty sold (16x17)	28960855	2322507				31283362

1	2	3	4	5	6	7
2004-05						
1.Production planned	440000	120000	240000	800000	2000000	
2.Actual Production	697861	134905	301752	1134518	2110222	
3.Difference (1-2)	-257861	-14905	-61752	-334518	-110222	
4.Exp.for actual prodn	343117783	36983893				380101676
5.Excavation Exp for actual prodn				35869554	277204256	313073810
6.Other Exp.for actual prodn(4-5)						67027866
7.Cost per MT for actual prodn(4/2)	491.67	274.15				
8.Excavation Exp.for planned prodn				25293246	262725207	288018453
9.Other Exp.for actual prodn(6)						67027866
10.Total Exp.for planned prodn(8+9)	320500313	34546007				355046319
11.Cost per MT for planned prodn(10/1)	728.41	287.90				
12.Difference in cost (11-7)	-236.74	-13.74				
13.Average Sale Price	763.69	426.00				
14.Margin for actual production(13-7)	272.02	151.85				
15.Margin for planned prodn(13-11)	35.28	138.12				
16.Difference in Margin (15-14)	-236.74	-13.74				
17.Actual Qty Sold	570503	122233				
18.Total difference for actual qty sold (16x17)	-135060880	-1679481				-136740361
2005-06						
1.Production planned	720000	180000	300000	1200000	3600000	
2.Actual Production	438063	142380	507630	1088073	3008183	
3.Difference (1-2)	281937	37620	(207630)	111927	591817	
4.Total Exp.for actual prodn	271114173	64922234				336036407
5.Excavation Exp for actual prodn				50769103	216303779	267072882
6.Other Exp.for actual prodn(4-5)						68963525
7.Cost per MT for actual prodn(4/2)	618.89	455.98				
8.Excavation Exp.for planned prodn				55991577	258858455	314850033
9.Other Exp.for actual prodn(6)						68963525
10.Total Exp.for planned prodn(8+9)	309660778	74152779				383813558
11.Cost per MT for planned prodn (10/1)	430.08	411.96				
12.Difference in cost (11-7)	-188.81	-44.02				
13.Average Sale Price	1003.83	739.39				
14.Margin for actual production(13-7)	384.94	283.41				
15.Margin for planned prodn(13-11)	573.75	327.43				
16.Difference in Margin (15-14)	188.81	44.02				
17.Actual Qty Sold	435100	99161				
18.Total difference for actual qty sold (16x17)	82151208	4365048				86516257

1	2	3	4	5	6	7
2006-07						
1.Production planned	675000	202500	472500	1350000	4050000	
2.Actual Production	723126	227667	683947	1634740	8599678	
3.Difference (1-2)	-48126	-25167	-211447	-284740	-4549678	
4.Total Exp.for actual prodn	484824138	108813842				593637980
5.Excavation Exp for actual prodn				79001039	298395317	377396356
6.Other Exp.for actual prodn(4-5)						216241624
7.Cost per MT for actual prodn(4/2)	670.46	477.95				
8.Excavation Exp.for planned prodn				65240590	140528638	205769228
9.Other Exp.for actual prodn(6)						216241624
10.Total Exp.for planned prodn(8+9)	344656263	77354589				422010852
11.Cost per MT for planned prodn(10/1)	510.60	382.00				
12.Difference in cost (11-7)	-159.85	-95.95				
13.Average Sale Price	1106.52	788.64				
14.Margin for actual production(13-7)	436.06	310.69				
15.Margin for planned prodn(13-11)	595.92	406.64				
16.Difference in Margin (15-14)	159.85	95.95				
17.Actual Qty Sold	643795	159498				
18.Total difference for actual qty sold (16x17)	102910631	15303833				118214464

**Production in MTs.
Amount in Rupees.**

Annexure 16

(Referred to in paragraph 2.2.10)

Statement showing the details for levy of penalty in respect of Ramakrishna Reddy, Contractor (Barytes)

2005-06

Month	Target		Production		Variation		Percentage of variation		Qty. for penalty		Amount of Penalty		
	ROM(MTs)	OB(Cum)	ROM(MTs)	OB(Cum)	ROM(MTs)	OB(Cum)	ROM (MTs)	OB (Cum)	ROM(MTs)	OB(Cum)	ROM(MTs)	OB(Cum)	Total
1	2	3	4	5	6	7	8	9	10	11	12	13	14
April	125000.000	375000.000	94820.340	68294.000	30179.660	306706.000	24	82	5179.660	231706.000	51796.60	5097532.00	5149328.60
May	125000.000	375000.000	109208.940	133509.000	15791.060	241491.000	13	64	0.000	166491.000	0.00	3662802.00	3662802.00
June	125000.000	375000.000	99787.840	256134.000	25212.160	118866.000	20	32	212.160	43866.000	2121.60	965052.00	967173.60
July	125000.000	375000.000	106947.240	325172.000	18052.760	49828.000	14	13	0.000	0.000	0.00	0.00	0.00
August	125000.000	375000.000	142569.100	328993.000	(17569.100)	46007.000	(14)	12	0.000	0.000	0.00	0.00	0.00
September	125000.000	375000.000	87053.700	371094.000	37946.300	3906.000	30	1	12946.300	0.000	129463.00	0.00	129463.00
October	125000.000	375000.000	73887.720	285044.000	51112.280	89956.000	41	24	26112.280	14956.000	261122.80	329032.00	590154.80
November	125000.000	375000.000	22224.410	184422.000	102775.590	190578.000	82	51	77775.590	115578.000	777755.90	2542716.00	3320471.90
December	125000.000	375000.000	22861.230	210880.000	102138.770	164120.000	82	44	77138.770	89120.000	771387.70	1960640.00	2732027.70
January	125000.000	375000.000	38029.960	280431.000	86970.040	94569.000	70	25	61970.040	19569.000	619700.40	430518.00	1050218.40
February	125000.000	375000.000	137347.440	241185.000	(12347.440)	133815.000	(10)	36	0.000	58815.000	0.00	1293930.00	1293930.00
March	125000.000	375000.000	151032.520	323024.170	(26032.520)	51975.830	(21)	14	0.000	0.000	0.00	0.00	0.00
Total(1)	1500000.000	4500000.000	1085770.440	3008182.170	414229.560	1491817.830	28	33	114229.560	591817.830	1142295.60	13019992.26	14162287.86
Total (2)	1500000.000	4500000.000	1085770.440	3008182.170	414229.560	1491817.830			261334.800	740101.000	2613348.00	16282222.00	18895570.00

2006-07

1	2	3	4	5	6	7	8	9	10	11	12	13	14
April	125000.000	375000.000	113153.260	444516.830	11846.740	(69516.830)	9	(19)	0.000	0.000	0.00	0.00	0.00
May	125000.000	375000.000	131868.670	227916.000	(6868.670)	147084.000	(5)	39	0.000	109584.000	0.00	2410848.00	2410848.00
June	150000.000	375000.000	185337.420	230890.000	(35337.420)	144110.000	(24)	38	0.000	106610.000	0.00	2345420.00	2345420.00
July	150000.000	375000.000	124039.460	351887.170	25960.540	23112.830	17	6	10960.540	0.000	109605.40	0.00	109605.40
August	150000.000	375000.000	108445.710	401626.000	41554.290	(26626.000)	28	(7)	26554.290	0.000	265542.90	0.00	265542.90
September	150000.000	375000.000	82682.420	434369.000	67317.580	(59369.000)	45	(16)	52317.580	0.000	523175.80	0.00	523175.80
October	150000.000	375000.000	102409.800	0.000	47590.200	375000.000	32	100	32590.200	337500.000	325902.00	7425000.00	7750902.00
November	150000.000	375000.000	60113.360	504686.000	89886.640	(129686.000)	60	(35)	74886.640	0.000	748866.40	0.00	748866.40
December	150000.000	375000.000	84943.790	384831.000	65056.210	(9831.000)	43	(3)	50056.210	0.000	500562.10	0.00	500562.10
January	150000.000	375000.000	210730.860	492038.000	(60730.860)	(117038.000)	(40)	(31)	0.000	0.000	0.00	0.00	0.00
February	150000.000	375000.000	215809.410	333765.000	(65809.410)	41235.000	(44)	11	0.000	3735.000	0.00	82170.00	82170.00
March	150000.000	375000.000	216208.360	294060.000	(66208.360)	80940.000	(44)	22	0.000	43440.000	0.00	955680.00	955680.00
Total(1)	1750000.000	4500000.000	1635742.520	4100585.000	114257.480	399415.000	7	9	(60742.520)	(50585.000)	(607425.200)	(1112870.000)	(1720295.200)
Total (2)	1750000.000	4500000.000	1635742.520	4100585.000	114257.480	399415.000			247365.460	600869.000	2473654.60	13219118.00	15692772.60

Total (1) represents the total of penalty to be levied on shortfall on annual review

Total (2) represents the total of penalty to be levied on a month to month basis

ROM – Run of Mine

Cum – Cubic Meters

OB - Overburden

Annexure - 17

(Referred to in paragraph 2.2.17)

Statement showing the loss of margin on the short procured order from ONGC

Year (No. of Months)	Orders from ONGC			Price		Margin (Rs)	Value of orders lost (Rs)
	To be procured (MTs)	Procured (MTs)	Less procured (MTs)	Sale (Rs)	Cost (Rs)		
2005-06 (Six)	30000	8000	22000	2016	1471 ⁺	545	1,19,90,000
2006-07 (Twelve)	60000	14982	45018	2175	1471 ⁺	704	3,16,92,672
2007-08 (one)	5000	Nil	5000	2175*	1471 ⁺	704	35,20,000
Total (Nineteen)	95000	22982	72018	--	--	--	4,72,02,672

* adopted the rate of 2006-07

+ adopted the rate of 2005-06 since rates for other years are not available.

Annexure - 18

(Referred to in paragraph 2.2.22)

Statement showing payment of Dead Rent

(Rupees in lakh)

Sl. No.	Extent of area in Acre/Ha.	Date of Execution of QL	Dead Rent (Upto 2006-07)	Advance Dead Rent (2007-08)	Deposit
1	89.06/36.042	20-6-2003	50.73	18.02	14.42
2	31.37/12.695	20-6-2003	22.38	6.35	5.08
3	2.44/0.988	13-5-2003	1.78	0.49	0.40
4	i) 46.50/18.89 ii) 48.00/19.433	3-2-2005 4-4-2006	19.13	9.72	9.41
5	30.91/12.514	27-6-2006	5.22	5.81	6.25
		Total	99.24	40.39	35.56

Annexure – 19

(Referred to in paragraph 2.3.7)

Analysis of sub-transmission/distribution capacity during the years 2002-03 to 2005-06 in four DISCOMS

	CPDCL	EPDCL	SPDCL	NPDCL
Average STC (in MVA)	7216.07	2344.32	4412.12	3719.49
Average DTC (in MVA)	8644.42	2931.50	5321.40	4263.97
(in MW)	6915.53	2345.20	4523.23	3411.17
Average connected load (in MW)	7211.14	4302.11	7189.73	4478.11
Average percentage of DTC in excess of STC	19.79	25.04	20.60	14.63
Average percentage of connected load in excess DTC	4.27	83.44	58.95	31.27

Growth of sub-transmission /Distribution capacity during the years 2002-03 to 2005-06 in four DISCOMS

Sl. No	APCPDCL	2002-03	2003-04	2004-05	2005-06
1.	Sub-power transformation capacity MVA	6086.4	7151.05	7679.5	7947.35
	MW	4869.12	5720.84	6143.6	6357.80
2.	Div. Transformation capacity MVA	7347.35	8168.15	9178.07	9884.12
	MW	5877.88	6534.52	7342.45	7907.29
3.	Connected Load MW	6262.00	6538.67	6785.318	9258.603
	MVA	7827.5	8173.33	8481.64	11573.25
4.	Percentage of DTC in excess of STCC (MVA)	20.71	14.22	19.51	24.37
5.	Connected load in excess DTC (MW)	384.12	4.15	-557.13	1351.31
6.	Excess load in percentage	6.53	0.06	--	17.08
7.	Sub power transmission capacity per MVA of connected load	0.77	0.87	0.90	0.68
8.	Distribution transformation capacity per MW of connected load	0.93	0.99	1.08	0.85

Sl.No	APEPDCL	2002-03	2003-04	2004-05	2005-06
1.	Sub power transformation capacity MVA MW	2091.85 1673.48	2222.68 1778.14	2333.60 1866.88	2729.15 2183.32
2.	Distribution transformation capacity MVA MW	2537.15 2029.72	2732.30 2185.84	3132.93 2506.34	3323.65 2658.92
3.	Connected Load MVA MW	4704.66 3763.72	5184.33 4147.46	5869.18 4695.34	5752.43 4601.94
4.	Percentage of DTC in excess of STC (MVA)	21.28	22.92	34.25	21.78
5.	Connected load in excess of DTC (MW)	1734.00	1961.62	2189.00	1943.02
6.	Excess load in percentage	85.43	89.71	87.33	73.07
7.	Sub power transformation capacity pr MVA of connected load	0.44	0.42	0.39	0.47
8.	Distribution transformation capacity per MW of connected load	0.53	0.52	0.53	0.57

Sl.No	APNPDCL	2002-03	2003-04	2004-05	2005-06
1.	Sub power transformation capacity MVA MW	3360.65 2688.52	3588.55 2870.84	3854.00 3083.20	4074.75 3259.80
2.	Distribution transformation capacity MVA MW	3664.00 2931.20	4030.63 3224.50	4476.89 3581.51	4884.36 3907.48
3.	Connected Load MVA MW	4919.80 3935.84	5128.75 4103.00	5825.60 4460.48	6516.43 5213.15
4.	Percentage of DTC in excess of STC (MVA)	9.02	12.31	16.16	19.86
5.	Connected load in excess of DTC (MW)	1004.64	878.50	878.97	1305.67
6.	Excess load in percentage	34.27	27.24	24.54	33.41
7.	Sub power transformation capacity pr MVA of connected load	0.68	0.69	0.66	0.62
8.	Distribution transformation capacity per MW of connected load	0.74	0.78	0.80	0.74

Sl.No	APSPDCL	2002-03	2003-04	2004-05	2005-06
1.	Sub power transformation capacity MVA MW	4006.85 3205.48	4333.65 3466.92	4544.45 3635.56	4763.55 3810.84
2.	Distribution transformation capacity MVA MW	4210.83 3579.35	5045.62 4288.77	5637.74 4792.08	6391.42 5432.71
3.	Connected Load MVA MW	7001.07 5600.86	9185.97 7348.78	9642.90 7714.32	10118.70 8094.96
4.	Percentage of DTC in excess of STC (MVA)	5.09	16.42	24.05	34.17
5.	Connected load in excess of DTC (MW)	2021.51	3060.01	2922.24	2662.25
6.	Excess load in percentage	56.47	71.34	60.98	49.00
7.	Sub power transformation capacity pr MVA of connected load	0.57	0.47	0.47	0.47
8.	Distribution transformation capacity per MW of connected load	0.63	0.58	0.62	0.67

Annexure – 20

(Referred to in paragraph 2.3.8)

Targets and Achievements of power sector companies of AP during the years
2002-03 to 2006-07

APTRANSCO

Year	Target (Physical and Financial)		Achievement (Physical and Financial)		Percentage of Achievement	Funding arrangements in respect of substations commissioned	
	No. of substations proposed	Amount involved (Rs. in lakh)	No. of substations	Amount involved (Rs. in lakh)		Against Target	REC
2002-03	18	NA	12	NA	66.66	NA	NA
2003-04	33	12101.36	25	9021.95	75.75	13	12
2004-05	25	9053.62	21	7605.15	84.00	14	7
2005-06	25	12129.89	18	7778.46	72.00	11	7
2006-07	15	9193.87	12	7270.23	80.00	7	5

APCPDCL

Year	Target (Physical and Financial)		Achievement (Physical and Financial)		Percentage of Achievement	Funding arrangements in respect of substations commissioned	
	No. of substations proposed	Amount involved (Rs. in lakh)	No. of substations	Amount involved (Rs. in lakh)		Against Target	REC
2002-03	70	5369	70	5369	100	19	51
2003-04	105	8679	89	7319	84.76	40	49
2004-05	68	5867	39	3337	57.35	27	12
2005-06	82	6774	53	4244	64.63	43	10
2006-07	65	8130	53	7300	81.53	38	15

APEPDCL

Year	Target (Physical and Financial)		Achievement (Physical and Financial)		Percentage of Achievement	Funding arrangements in respect of substations commissioned	
	No. of substations proposed	Amount involved (Rs. in lakh)	No. of substations	Amount involved (Rs. in lakh)		Against Target	REC
2002-03	53	4864	46	NIL	86.79	39	7
2003-04	31	Not Available	20	NA	64.51	16	4
2004-05	44	Not available	21	NA	47.72	9	12
2005-06	43	Not available	29	NA	67.44	5	24
2006-07	71	Not available	20	NA	28.16	2	18

APNPDCL

Year	Target (Physical and Financial)		Achievement (Physical and Financial)		Percentage of Achievement against Target	Funding arrangements in respect of substations commissioned	
	No. of substations proposed	Amount involved (Rs. in lakh)	No. of substations	Amount involved (Rs. in lakh)		REC	PFC & Others
2002-03	38	1050	21	886.50	55.26	21	--
2003-04	51	3363.50	32	2390	62.74	20	12
2004-05	78	4543.50	38	3432.10	48.71	21	17
2005-06	74	3100.40	39	3042.30	52.70	35	4
2006-07	43	2298.10	39	2259.60	90.69	36	3

APSPDCL

Year	Target (Physical and Financial)		Achievement (Physical and Financial)		Percentage of Achievement Against Target	Funding arrangements in respect of substations commissioned	
	No. of substations proposed	Amount involved (Rs. in lakh)	No. of substations	Amount involved (Rs. in lakh)		REC	PFC & Others
2002-03	56	2884	45	2317.50	80.35	43	2
2003-04	69	3753.60	65	3536	94.20	61	4
2004-05	91	5250.70	47	2711.90	51.64	46	1
2005-06	73	4547.9	47	2928.10	64.38	43	4
2006-07	85	5652.50	67	4455.50	78.82	58	9

Annexure – 21

(Referred to in paragraph 2.3.19)

Table showing details of DTRs failed and the expenditure incurred on repairs by all Discoms for five years ending 2006-07

(Expenditure: Rupees in crore)

Name of Discom	Details	2002-03	2003-04	2004-05	2005-06	2006-07
CPDCL	Existing	88519	118573	147314	164687	173795
	Failure	14399	14072	13962	21139	19314
	Norm percentage	15	12	12	12	12
	Percentage of failure	16.27	11.87	9.48	12.84	11.11
	Excess failure percentage over norm	1.27	--	--	0.84	--
	Expenditure on repair	29.91	20.59	18.94	13.03	34.28
NPDCL	Existing	53989	66674	86842	102177	110688
	Failure	10168	10543	10177	9275	9079
	Norm percentage	15	12	12	12	12
	Percentage of failure	18.83	15.81	11.72	9.08	8.20
	Excess failure percentage over norm	3.83	3.81	--	--	--
	Expenditure on repair	16.11	12.24	11.47	12.74	13.66
SPDCL	Existing	59732	93996	115205	139016	158160
	Failure	8458	8702	14797	16642	14780
	Norm percentage	15	12	12	12	12
	Percentage of failure	15.16	9.26	12.84	11.97	9.34
	Excess failure percentage over norm	0.16	--	0.84	--	--
	Expenditure on repair	19.65	14.38	15.64	12.06	12.92
EPDCL	Existing	40428	46195	56576	69079	76722
	Failure	5298	5771	6097	6091	6115
	Norm percentage	13	7	7	3	3
	Percentage of failure	13.1	12.49	10.77	8.81	7.8
	Excess failure percentage over norm	0.10	5.49	3.77	5.81	4.8
	Expenditure on repair	4.10	3.14	6.15	5.67	4.43

Annexure – 22
(Referred to in paragraph 2.3.20)
Details showing cause-wise failures of distribution transformers

Discom & Year	Manufacturing defects	Repairing Defects	Lightening	Short Circuit	Improper Earthing	Over-Loaded	Unbalanced load	Low oil	Internal defects
2002-03									
CPDCL	358	1652	847	595	1015	3360	-	-	2179
NPDCL	674	796	2401	2148	1080	2986	-	-	1340
SPDCL	694	1721	599	702	266	4705	-	286	1368
EPDCL	296	284	198	921	666	1599	99	531	457
Total	2022	4453	4045	4366	3027	12650	99	817	5344
2003-04									
CPDCL	319	1696	854	537	1734	4169	-	-	2321
NPDCL	573	801	2253	2197	1056	2735	-	-	1608
SPDCL	590	1378	578	965	239	5704	-	379	1305
EPDCL	214	351	228	1055	622	1572	50	667	530
Total	1696	4226	3913	4754	3651	14180	50	1046	5764
2004-05									
CPDCL	478	2048	875	328	1455	367	-	-	2505
NPDCL	618	993	2743	1206	764	2513	-	-	2447
SPDCL	768	1559	790	826	233	6666	-	55	787
EPDCL	351	358	211	1138	555	1585	43	797	561
Total	2215	4958	4619	3498	3007	11131	43	852	6300
2005-06									
CPDCL	346	1721	1114	653	2139	5897	-	-	3497
NPDCL	1157	593	2235	1802	1054	2927	-	-	1674
SPDCL	938	1138	583	1511	274	8601	-	2	1024
EPDCL	1148	211	189	466	786	1082	32	781	700
Total	3589	3663	4121	4432	4253	18507	32	783	6895
2006-07									
CPDCL	195	1532	1045	624	1880	3764	-	-	2382
NPDCL	838	158	1137	1107	389	931	-	-	607
SPDCL	825	860	535	1105	253	6437	-	17	1042
EPDCL	1751	241	155	1100	519	631	38	437	561
Total	3609	2791	2872	3936	3041	11763	38	454	4592

Statement showing percentage of failure of distribution transformers due to over loading

Year	Total No. of failures (except manufacturing, repairing and internal defects)	No. of failures due to over loading	Percentage of failure due to over loading
2002-03	25004	12650	50.59
2003-04	27594	14180	51.38
2004-05	26480	14461	54.61
2005-06	32128	18507	57.60
2006-07	22104	11763	53.21

Annexure – 23

(Referred to in paragraph 2.3.27)

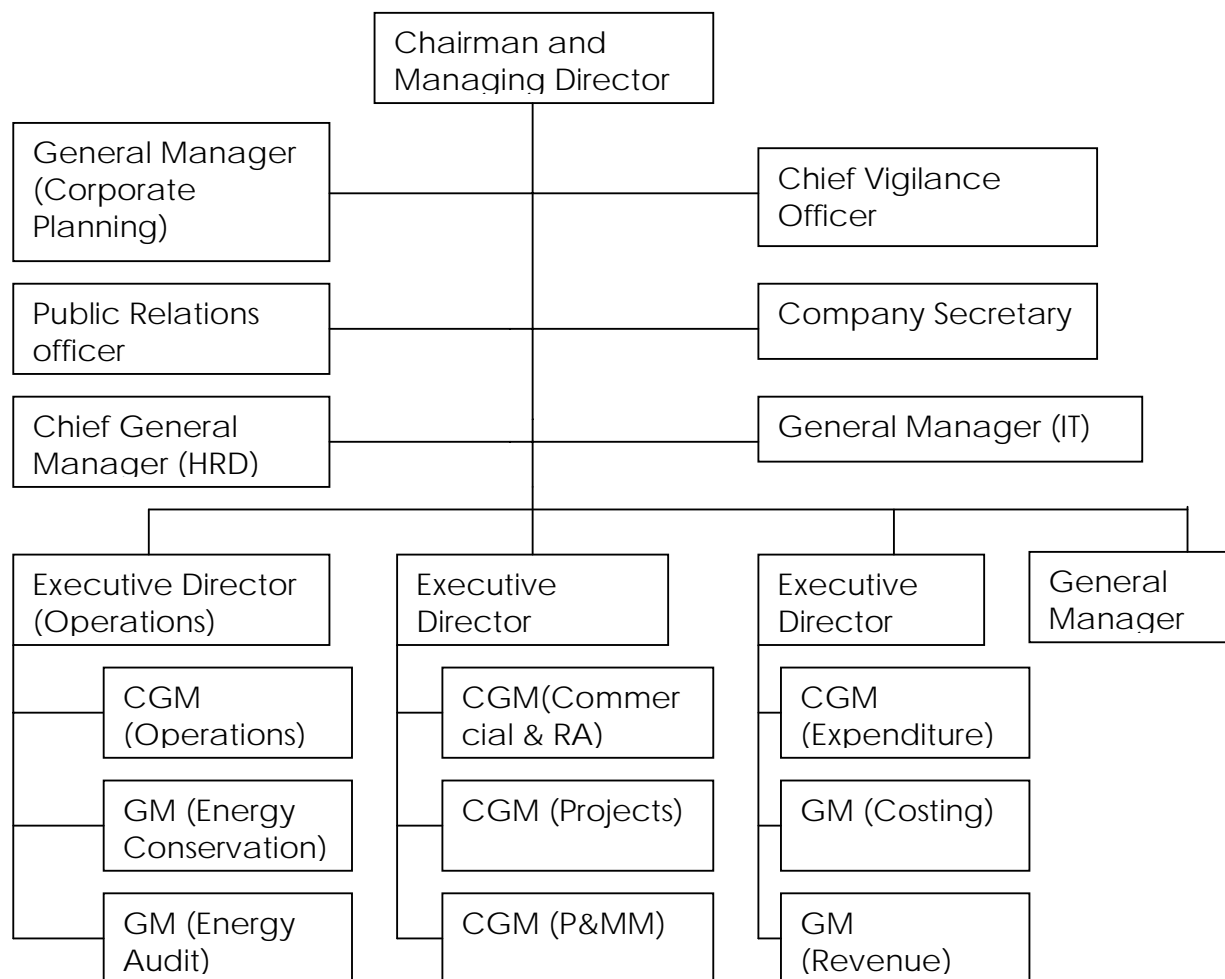
Details of rolling stock as per norm vis-à-vis actual for five years up to 2006-07

Discom/Year	DTRs existing	Rolling stock as per norm	Actual rolling stock	Short fall
NPDCL				
2002-03	53989	2159	1608	551
2003-04	66674	2667	1740	927
2004-05	86842	3474	1593	1881
2005-06	102177	4087	2457	1630
2006-07	113646	4545	3219	1326
SPDCL				
2002-03	NA	NA	NA	NA
2003-04	93841	3754	1699	2055
2004-05	115205	4608	2448	2160
2005-06	129016	5161	3373	1788
2006-07	154997	6200	4953	1247
CPDCL				
2002-03 to 2005-06	NA	NA	NA	NA
2006-07	172974	6919	4000	2919
EPDCL				
2002-03 to 2005-06	NA	NA	NA	NA
2006-07	75632	3025	2471	554

Annexure – 24

(Referred to in paragraph 2.4.7)

**Organisation Chart of
Central Power Distribution Company of Andhra Pradesh Limited**



Annexure - 25
(Referred to in paragraph 2.4.7)

Details of cadre-wise outsourced appointments

Sl. No.	Name of the cadre recruited	Name of the Appointee	Date of Joining	Contract period	Activities/Services of the out sourced employees
1	Chief General Manager (HRD)	M.Sanjeeva Rao	04-08-2003 F.N	3 years upto 03-08-2006 A.N	The main responsibility to look after the HR issues of the Company and to guide the existing staff in compliance of HR Issues.
		P.V.R. Prasad	05-10-2006 F.N	3 years Resigned from the post on 03-01-07	
		Vacant as on date			
2	General Manager(IT)	Uday Shankar	05-12-2003 F. N	3 Years - Resigned on 13-06-2005 A. N	The main responsibility to improve the efficiency of the business through implementation of IT & Software solutions, with specific responsibilities of planning, developing and implementing and overall IS plan integrating all IT related initiatives in APCPDCL
		V.Sivaji (on deputation basis)	11-11-2004 F.N (Continuing as on date)	Extendable on year to year basis	
3	General Manager (Customer Services) Post is not sanctioned - Counted against the vacant post of General Manager (Energy Conservation).	S.Subrahmanyam	04-02-2004 F.N (Contract period was extended for further 2 more years duly renewing the agreement year by year)	2 years	The main responsibility to improve the efficiency of business through effective handling and management of customer related issues and related initiatives. Besides the above, the incumbent will also have overall responsibility for formulating and implementing the policies of APCPDCL
4	General Manager (Accounts) Post is not sanctioned - Counted against the vacant post of General Manager (Costing)	H.Sangeetha Gupta	03-06-2004 F.N.- Extension was given for a further period of 2 years from 03-06-2006	2 years (extendable on year to year basis)	The main responsibility to supervise the activity of maintenance of Accounts of the Company and to guide the existing staff in compliance of Accounting Standards and day-to day accounting requirements and must able to analytically examined the accounts and solve problems related to staff.
5	General Manager (Costing)	K. V Murali	31-10-2003 F.N	3 Years - resigned on 17-01-2005 A.N	The main responsibility to establish and maintain appropriate costing procedures, standards and controls for the efficient operations of the utility. The person will report to the Director (Finance & IT) with specific responsibilities

Annexure 26

(Referred to in paragraph 2.4.11)

Statement showing the total irregular expenditure

Particulars	Typists/C.O	House Keeping	O&M	Total
(1)	(2)	(3)	(4)	(5)
2002-03				
a) Sanctioned	253	533	11428	12214
b) Men in Position	131	457	8176	8764
c) Vacancies	122	76	3252	3450
d) Contract Labour Engaged				7099
e) Excess Contract Labour Engaged (d-c)				3649
f) Average Rate per month per labour	2500(S)+1800(SS)+1500(US)/3			1933
Amount of Irregular Expenditure 'A' (f x e x 12)				84642204
2003-04				
Sanctioned	253	534	11535	12322
Men in Position	135	464	8881	9480
Vacancies	118	70	2654	2842
Contract Labour Engaged				7099
Excess Contract Labour Engaged				4257
Average Rate per month per labour	3400(S)+2810(SS)+2220(US)/3			2810
Amount of Irregular Expenditure 'B'				143546040
2004-05				
Sanctioned	255	539	11771	12565
Men in Position	143	469	8672	9284
Vacancies	112	70	3099	3281
Contract Labour Engaged				7099
Excess Contract Labour Engaged				3818
Average Rate per month per labour	3400(S)+2810(SS)+2220(US)/3			2810

(1)	(2)	(3)	(4)
Amount of Irregular Expenditure			128742960
2005-06 (01.04.2005 to 30.09.2005)			
Sanctioned	255	539	11774
Men in Position	124	489	8430
Vacancies	131	50	3344
Contract Labour Engaged			7099
Excess Contract Labour Engaged			3574
Average Rate per month per labour	3654(S)+3020(SS)+2386(US)/3		3020
Amount of Irregular Expenditure 'C'			64760880
2005-06 (01.10.2005 to 31.03.2006)			
Sanctioned	255	539	11774
Men in Position	124	489	8430
Vacancies	131	50	3344
Contract Labour Engaged			4931
Excess Contract Labour Engaged			1406
Average Rate per month per labour	3654(S)+3020(SS)+2386(US)/3		3020
Amount of Irregular Expenditure 'D'			25476720
2006-07			
Sanctioned	255	539	11774
Men in Position	119	506	7879
Vacancies	136	33	3895
Contract Labour Engaged			4931
Excess Contract Labour Engaged			867
Average Rate per month per labour	3654(S)+3020(SS)+2386(US)/3		3020
Amount of Irregular Expenditure 'E'			31420080
Total Irregular Expenditure A+B+C+D+E			478588884
(-) expenditure on drivers			5108400
Net irregular expenditure			473480484

Annexure 27

(Referred to in paragraph 2.4.13)

Statement showing the extra expenditure due to unnecessary outsourcing of DTRS repairs

Year	Staff available	No. of DTRs can be repaired as per norms (@ 50 per month)	DTRs received for repairs	No of DTRs Repaired by SPM	Remaining Capacity of Dept SPM Centre	No of DTRs Repaired by Private Agencies	Average Material and Winding Labour Charges per DTR of Departmental Repairs (Variable Cost)	Average Cost per DTR of Private Agencies	Average Difference	Extra Expenditure due to Outsourcing of DTRs Repairs (10 x 6)
1	2	3	4	5	6	7	8	9	10	11
HYDERABAD SOUTH										
2002-03	11	600	476	188	412	288	2352.41	13864.93	11512.52	3315606
2003-04	12	600	336	123	477	212	3595.55	13922.64	10327.09	2189343
2004-05	12	600	387	170	430	217	2601.49	11053.92	8452.43	1834177
2005-06	11	600	492	199	401	293	2222.38	9166.57	6944.20	2034651
2006-07	11	600	456	201	399	255	2200.26	10113.45	7913.19	2017863
Total		3000	2146	881	2119	1265				11391638
HYDERABAD NORTH										
2002-03	20	600	480	205	395	275	1659.26	11974.61	10315.35	2836721
2003-04	17	600	352	243	357	109	1468.08	15873.01	14404.93	1570137
2004-05	15	600	409	194	406	215	2422.81	14872.52	12449.71	2676688
2005-06	13	600	239	110	490	129	4929.85	11442.30	6512.45	840106
2006-07	13	600	373	210	390	163	2739.68	12822.51	10082.83	1643501
Total		3000	1853	962	2038	891				9567153
Grand Total		6000	3999	1843	4157	2156				20958791

Annexure 28**(Referred to in paragraph 2.4.15)****Extra payment made to spot billing agencies****(in rupees)**

Circle/Particulars	2005-06	2006-07
A. HYDERABAD/North		
No of billed services	2412875	2695563
Actually Billed rate	1.95	1.95
Lowest rate	1.43	1.43
Rate difference	0.52	0.52
Extra Payment	1254695	1401693
Hyderabad South		
B. Karvey & KPR		
No of billed services	1070191	800139
Actually Billed rate	1.95	1.95
Lowest rate	1.43	1.43
Rate difference	0.52	0.52
Extra Payment	556499	416072
C. Karvey III		
No of billed services	451015	0
Actually Billed rate	1.78	0
Lowest rate	1.43	0
Rate difference	0.35	0
Extra Payment	157855	0
D. Ranga Reddy/South		
No of billed services	970126	1111712
Actually Billed rate	1.95	1.95
Lowest rate	1.43	1.43
Rate difference	0.52	0.52
Extra Payment	504466	578090
Total (A + B + C + D)	2473515	2395855
Grand Total	4869370	

Note: Lowest Rate compared is of Hyderabad/South

Annexure –29

(Referred to in paragraph 2.4.16)

Statement showing avoidable payment made to PAAs due to delay in revision of rates.

(in rupees)

Circle	Year			Total
	2002-03	2003-04	2004-05	
Ananthapur	--	--	3397802	3397802
Kurnool	--	--	443178	443178
Mahaboobnagar	--	--	1298018	1298018
Nalgonda	--	--	1571816	1571816
Medak	--	--	1415163	1415163
Ranga Reddy (N)	--	2982849	2048142	5030991
Ranga Reddy (S)	501518	816529	900352	2218399
Hyderabad (N)	1429761	2302222	2439056	6171039
Hyderabad (S)	1269637	1715417	1916974	4902028
Hyderabad (C)	207282	216573	222001	645856
Total number of bills issued				27094290
Difference of rate				x 0.15
Total				4064144

Annexure – 30**(Referred to in paragraph 2.4.17)****Statement showing the penalty leviable for delayed remittance on AP Online for the period from April 2006 to March 2007**

Sl.No.	Month	Amount (Rs.)
1	April 2006	11,089
2	May 2006	86,078
3	June 2006	98,431
4	July 2006	1,35,436
5	August 2006	1,60,725
6	September 2006	1,05,977
7	October 2006	96,255
8	November 2006	70,564
9	December 2006	52,385
10	January 2007	58,576
11	February 2007	67,212
12	March 2007	77,006
Total		10,19,734

Annexure – 31**(Referred to in paragraph 3.16.1 and 3.17)****List of Companies selected for review of Corporate Governance and placement of Annual Reports**

S.No	Name of the company
1	Andhra Pradesh State Agro Industries Development Corporation Limited (APSAIDC)
2	Andhra Pradesh state Irrigation Development corporation limited (APSIDC)
3	Andhra Pradesh Meat Development Corporation Limited (APMDC)
4	Andhra Pradesh Industrial Infrastructure Corporation Limited (APIIC)
5	Leather Industrial Development Corporation of Andhra Pradesh Limited (LIDCAP)
6	Andhra Pradesh Beverages Corporation Limited (APBCL)
7	Andhra Pradesh Heavy Machinery and Engineering Corporation Limited (APHMEL)
8	Andhra Pradesh Handicrafts Development Corporation Limited (APHDC)
9	Andhra Pradesh Forest Development Corporation Limited (APFDC)
10	Andhra Pradesh Mineral Development Corporation Limited (APMDCL)
11	The Singareni Collaries Company limited (SCCL)
12	Andhra Pradesh State Police Housing Corporation Limited (APSPHC)
13	Andhra Pradesh State housing Corporation Limited (APSHC)
14	Andhra Pradesh State Minorities Finance Corporation Limited (APSMFC)
15	Andhra Pradesh State Civil supplies Corporation Limited (APSCSC)
16	The Nizam Sugars Limited (NSF)
17	Andhra Pradesh Tourism Development Corporation Limited (APTDC)
18	Andhra Pradesh Power Generation Corporation Limited (APGENCO)
19	Transmission corporation of Andhra Pradesh (APTRANSCO)
20	Eastern Power Distributing Company of Andhra Pradesh Limited (EPDCL)
21	Southern Power Distributing Company of Andhra Pradesh Limited (SPDCL)
22	Central Power Distributing Company of Andhra Pradesh Limited (CPDCL)
23	Northern Power Distributing Company of Andhra Pradesh Limited (NPDCL)
24	Andhra Pradesh Power finance Corporation Limited (APPFC)
25	Andhra Pradesh State Film, Television and Theater development corporation limited (APFTTDC)
26	Non Conventional Energy Development Corporation of Andhra Pradesh limited. (NEDCAP)
27	Andhra Pradesh Technology Services Limited (APTS)
28	Andhra Pradesh State Trading Corporation Limited (APSTC)

Annexure-32
(Referred to in paragraph 3.24.1)

Statement showing paragraphs/reviews for which explanatory notes were not received (as on 30 September 2007)

Sl. No	Name of the Department	1992-93		1993-94		1995-96		1996-97		1997-98		1998-99		1999-00		2000-01		2001-02		2002-03		2003-04		2004-05		2005-06		Total	
		R	P	R	P	R	P	R	P	R	P	R	P	R	P	R	P	R	P	R	P	R	P	R	P	R	P	R	P
1	Industries & Commerce	1	0			1	4	1	1	1	4	0	1	1	6	1	1	0	6	0	2	0	2	0	2	1	2	7	31
2	Agriculture & Cooperation																		0	1							0	1	
3	Irrigation & CAD			1	0	0	1			0	1	1	0														2	2	
4	Food, Civil Supplies & Consumer Affairs			1	0							0	1			0	1	0	1					0	1		1	4	
5	Housing					1	0																				1	0	
6	Energy									0	4	0	5	2	1	1	0	1	1			2	5	2	2	2	3	10	21
7	Forest, Environment Science & Technology														1	0											1	0	
8	Transport Roads & Buildings																								0	2	0	2	
9	Revenue														0	1											0	1	
10	General Administration																				0	3	0	1	0	2	0	6	
11	Tourism																						0	3			0	3	
	Total	1	0	2	0	2	5	1	1	1	9	1	7	3	7	3	3	1	8	0	3	2	10	2	9	3	9	22	71

Note : R stands for Reviews
P stands for Paragraphs

Annexure - 33

(Referred to in paragraph 3.24.3)

Statement showing Department-wise break-up of outstanding Inspection Reports (IRs)

Sl. No.	Name of Department	No. of PSUs	No. of outstanding IRs	No. of outstanding paragraphs	Year from which paragraphs outstanding
1.	Animal Husbandry, Dairy Development and Fisheries	1	3	6	2002-03
2.	Agriculture and Co-operation #	3	9	39	2000-01
3.	Energy	10	850	2407	1992-93
4.	Food, Civil Supplies and Consumer Affairs	1	16	51	2004-05
5.	Information Technology and Communication	1	2	2	2003-04
6.	Forest, Environment, Science and Technology	1	3	13	2003-04
7.	General Administration	1	--	--	--
8.	Home	1	3	4	2003-04
9.	Housing	1	17	59	1995-96
10.	Irrigation and Command Area Development	1	5	26	2000-01
11.	Industry and Commerce #	8	32	133	1996-97
12.	Municipal Administration and Urban Development	1	6	34	1999-2000
13.	Minorities Welfare	1	6	7	2001-02
14.	Public Enterprise	1	2	4	1998-99
15.	Revenue	1	5	13	2001-02
16.	Transport, Roads and Buildings	1	225	716	1999-2000
17.	Tourism and Culture	1	4	46	2002-03
	Total	35	1188	3560	

includes 619 (B) companies

Annexure- 34
(Referred to in paragraph 3.24.3)

Statement showing the department wise draft paragraphs and Reviews to which replies are awaited

Sl.No.	Name of the Department	No. of draft Paragraphs	No. of Reviews	Period of issue
1.	Industries & Commerce	4	-	April 2007 September 2007
2.	Energy	8	2	April 2007 to September 2007
3.	Transport, Roads and Buildings	2	-	December 2006 to May 2007
4.	Agriculture & Co-operative	2	-	April 2007
5.	Department of Public Enterprises	2	-	April 2007
6.	Tourism	1	-	April 2007
	Total	19	2	