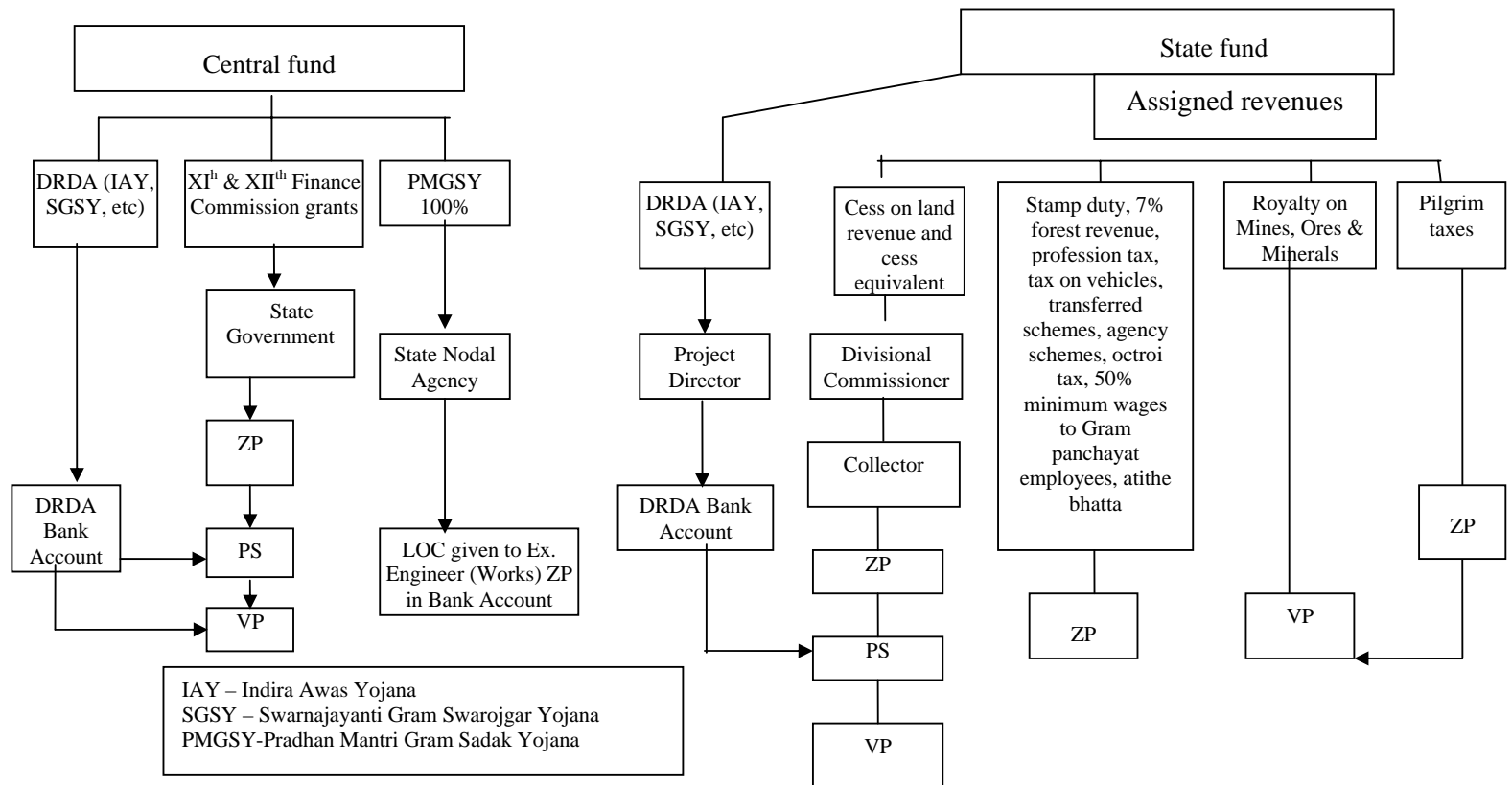


## APPENDIX I

(Reference: Paragraph 1.4.4; Page 3)

### FUND FLOW STATEMENT



## APPENDIX II

(Reference : Paragraph 1.7.5; Page 9)

**Details of expenditure on transferred schemes, agency schemes and Zilla Parishads  
Own schemes for the year 2007-08**

(Rupees in crore)

Sr. No.	Name of Zilla Parishad	Expenditure on Transferred Schemes	Expenditure on Agency Schemes	Expenditure on ZPs own Schemes	Total expenditure
1.	Ahmednagar	439.13	34.01	19.49	492.63
2.	Akola	311.83	47.71	6.70	366.24
3	Amravati	285.67	39.21	8.68	333.56
4	Aurangabad	242.50	46.09	3.37	291.96
5	Bhandara	155.92	33.26	0.09	189.27
6	Beed	514.57	94.21	14.02	622.80
7	Buldhana	262.94	36.54	51.64	351.12
8	Chandrapur	236.95	24.65	13.67	275.27
9	Dhule	172.28	38.00	18.66	228.94
10	Gadchiroli	153.43	23.63	6.50	183.56
11	Gondia	162.69	32.09	13.45	208.23
12	Hingoli	261.96	31.26	5.05	298.27
13	Jalgaon	321.11	90.05	11.03	422.19
14	Jalna	340.32	72.84	4.05	417.21
15	Kolhapur	340.07	33.95	23.75	397.77
16	Latur	434.40	64.21	6.97	505.58
17	Nagpur	479.97	87.84	17.92	585.73
18	Nanded	342.97	56.55	5.92	405.44
19	Nandurbar	160.45	42.61	3.02	206.08
20	Nashik	437.52	46.17	8.08	491.77
21	Osmanabad	358.71	43.73	4.36	406.80
22	Parbhani	304.54	41.30	0.33	346.17
23	Pune	411.25	50.10	41.29	502.64
24	Ratnagiri	485.64	55.17	4.43	545.24
25	Raigad	227.98	22.79	20.84	271.61
26	Sangli	262.31	46.80	5.14	314.25
27	Satara	325.23	42.26	69.00	436.49
28	Sindhudurg	170.59	19.66	1.98	192.23
29	Solapur	712.18	104.41	57.39	873.98
30	Thane	356.67	54.95	14.64	426.26
31	Wardha	157.04	19.90	5.45	182.39
32	Washim	129.42	26.44	3.63	159.49
33	Yavatmal	331.19	53.67	12.90	397.76
	<b>Total</b>	<b>10289.43</b>	<b>1556.06</b>	<b>483.44</b>	<b>12328.93</b>

(As per information received from CAFOs of respective ZPs)

### APPENDIX III

(Reference: Paragraph 1.14.3 ; Page 13)

#### Outstanding Inspection Reports and Paras from Chief Auditor, Local Fund Accounts Report

Year of the Report	Number of outstanding Paras		Objected Amount (Rupees in crore)	
	Government Funds	ZPs Own funds	Government Funds	ZPs Own funds
1962-63 to 1997-98	36796	20169	894.31	206.24
1998-99	4610	2254	187.88	42.59
1999-00	5023	2760	248.09	63.96
2000-01	4799	2115	157.31	37.71
2001-02	5665	2295	189.03	50.81
2002-03	7136	3029	497.71	75.15
2003-04	6599	3356	450.67	69.83
2004-05	9500	4592	395.98	96.44
2005-06	12971	3994	523.70	135.75
2006-07	13354	3559	1253.94	157.92
<b>Total</b>	<b>106453</b>	<b>48123</b>	<b>4798.62</b>	<b>936.40</b>

(Source: As per CALFA report 2006-07)

## APPENDIX IV

(Reference : Paragraph 2.3; Page 20)

### List of selected Gram Panchayats

Sr. No.	Gram Panchayat	Panchayat Samiti	Zilla Parishad	Sr. No.	Gram Panchayat	Panchayat Samiti	Zilla Parishad
1	Bharatpur	<i>Balapur</i>	<b>Akola</b>	41	Alore	<i>Chiplun</i>	<b>Ratnagiri</b>
2	Gaigaon			42	Mandki		
3	Kazikhed			43	Talsar		
5	Malwade			44	Terav		
4	Sangi (Jomdeo)			45	Vehale		
6	Borta	<i>Murtizapur</i>		46	Dandeadam	<i>Ratnagiri</i>	
7	Goregaon			47	Gaokhadi		
8	Paradh			48	Kasarveli		
9	Umri Arab			49	Tonade		
10	Virwada			50	Ukshi		
11	Borgaonbuti	<i>Chimur</i>	<b>Chandrapur</b>	51	Bholewadi	<i>Karad</i>	<b>Satara</b>
12	Chincholi			52	Burbushi		
13	Kotgaon			53	Dushare		
14	Masal			54	Tembha		
15	Sonegaon Van			55	Umbraj		
16	Arjuni	<i>Warora</i>		56	Dabhedabhekar	<i>Mahabaleshwar</i>	
17	Barwha			57	Kharoshi		
18	Chargaon			58	Moleshwar		
19	Dadapur			59	Niwali		
20	Mesa			60	Uchat		
21	Antarwada	<i>Jalna</i>	<b>Jalna</b>	61	Askot	<i>Murbad</i>	<b>Thane</b>
22	Dahiphal			62	Kisol		
23	Malegaon			63	Korwale		
24	Manegaon			64	Songaon		
25	Mirkheda			65	Tulai		
26	Babultara	<i>Partur</i>		66	Chinchoti	<i>Vasai</i>	
27	Deola			67	Dhaniv		
28	Dolhara			68	Khaniwade		
29	Phulwadi			69	Mardesh		
30	Salegaon			70	Sativali		
31	Dongargaon	<i>Deola</i>	<b>Nasik</b>	71	Bramhangaon	<i>Pusad</i>	<b>Yavatmal</b>
32	Khalap			72	Londari		
33	Meshi			73	Pokhari		
34	Subhashnagar			74	Selu (Bk)		
35	Vijaynagar			75	Warud		
36	Devergaon	<i>Nasik</i>		76	Bramhni	<i>Wani</i>	
37	Hinganvede			77	Gowari (P)		
38	Lakhalgaon			78	Kurai		
39	Ozarkhede			79	Maregaon		
40	Palse			80	Mungoli		

## Appendix V

(Reference : Paragraph 2.7.5.1; Page 37)

### Submission of annual accounts by Gram Panchayats

Sr. No.	Gram Panchayat	2003-04	2004-05	2005-06	2006-07	2007-08
1	Borta	N	N	N	N	N
2	Bramhangaon	N	N	N	N	N
3	Chicholi	N	N	Y	Y	Y
4	Chargaon	N	N	N	Y	Y
5	Goregaon	N	N	N	Y	Y
6	Gaokhadi	N	N	N	Y	Y
7	Hinganwede	N	N	N	N	Y
8	Kasarveli	Y	Y	Y	Y	N
9	Khanivade	N	N	N	N	N
10	Masal	Y	N	N	N	N
11	Palase	N	N	N	N	N
12	Paradh	N	N	N	N	N
13	Shelu (BK)	N	N	N	N	N
14	Tembhu	N	N	N	N	N
15	Umri Arab	N	N	N	N	Y
16	Ukshi	N	Y	Y	Y	Y
17	Virvada	N	N	N	N	N

**Note: - N= No, Y= Yes**

## Appendix VI

(Reference : Paragraph 2.7.5.5; Page 38)

### Maintenance of account in prescribed forms

Sr. No.	Number of Gram Panchayats	Form Number not maintained
1	6	3
2	6	4
3	13	6
4	1	8
5	22	11
6	6	15
7	9	16
8	21	17
9	7	18
10	6	19
11	14	20
12	58	21
13	1	22
14	5	23
15	10	25
16	9	26
17	10	27

## Appendix-VII

(Reference: Paragraph 4.4.5; Page 64)

### Overall financial position of Municipal Corporations for 2007-08

(Rupees in crore)

Sr.No	Name of the Corporations	Receipts	Expenditure
1	Ahmednagar	97	95
2	Akola	138	136
3	Amravati	86	87
4	Aurangabad	221	224
5	Bhivandi	197	196
6	BMC	10075	7528
7	Dhule	77	84
8	Jalgaon	107	105
9	Kalyan-Dombivli	270	278
10	Kolhapur	201	197
11	Malegaon	94	69
12	Mira Bhayender	214	201
13	Nagpur	471	424
14	Nanded Waghela	146	227
15	Nashik	577	541
16	Navi Mumbai	578	530
17	Pimpri Chinchwad	1304	1275
18	Pune	3573	3506
19	Sangli	111	180
20	Solapur	151	151
21	Thane	754	612
22	Ulhasnagar	139	133
	<b>Grand Total</b>	<b>19581</b>	<b>16779</b>

## Appendix VIII

(Reference: Paragraph 4.4.6 : Page 65)

### Statement of Arrears in Water Tax Collection

(Rupees in crore)

Name of Municipal Corporation	Opening Balance as on 1 April 2007	Demand for the year	Total Receivable	Recovery		Closing Balance as on 31 March 2008
				Current Year	Previous Year	
Ahmednagar	7.75	8.83	16.58	2.43	2.23	11.92
Akola	30.37	1.54	31.91	6.77	12.50	12.64
Amravati	0.00	0.00	0.00	0.00	0.00	0.00
Aurangabad	16.87	10.98	27.85	7.78	4.56	15.51
Bhivandi	19.12	5.59	24.71	2.24	1.83	20.64
BMC	308.76	1049.47	1358.23	613.06	0.00	745.17
Dhule	0.03	0.03	0.06	0.01	0.01	0.04
Jalgaon	0.71	1.12	1.83	0.75	0.66	0.42
Kalyan Dombivali	17.65	31.68	49.33	30.10	0.00	19.23
Kolhapur	6.29	17.92	24.21	16.27	0.00	7.94
Malegaon	3.95	4.58	8.53	2.08	1.40	5.05
Mira Bhayander	0.02	0.21	0.23	0.19	0.01	0.03
Nagpur	19.54	48.41	67.95	46.96	0.00	20.99
Nanded waghala	6.73	4.99	11.72	2.52	3.53	5.67
Nasik	5.61	23.74	29.35	4.11	19.69	5.55
Navi Mumbai	21.44	49.32	70.76	48.61	4.18	17.97
Pimpri Chinchwad	22.90	26.44	49.34	23.92	0.00	25.42
Pune	219.89	60.43	280.32	39.21	21.22	219.89
Sangli-Miraj-Kupwad	1.80	3.60	5.40	3.04	1.18	1.18
Solapur	22.84	13.57	36.41	9.96	2.46	23.99
Thane	34.56	54.29	88.85	36.60	13.96	38.29
Ulhasnagar	30.98	3.01	33.99	2.14	0.00	31.85
<b>TOTAL</b>	<b>797.81</b>	<b>1419.75</b>	<b>2217.56</b>	<b>898.75</b>	<b>89.42</b>	<b>1229.39</b>



## Appendix IX

(Reference: Paragraph 4.4.6 : Page 65 )

### Statement of Arrears in Property Tax Collection

(Rupees in crore)

Name of Municipal Corporation	Opening Balance as on 1 April 2007	Demand for the year	Total Receivable	Recovery		Closing Balance as on 31 March 2008
				Current Year	Previous Year	
Ahmednagar	64.55	18.46	83.01	4.31	7.41	71.29
Akola	14.04	9.95	23.99	4.86	7.43	11.70
Amravati	11.22	16.27	27.49	12.81	3.46	11.22
Aurangabad	19.78	19.25	39.03	11.26	11.90	15.87
Bhivandi	27.33	14.03	41.36	7.38	5.80	28.18
BMC	2768.05	2877.29	5645.34	1681.09	253.4	3710.85
Dhule	0.05	0.03	0.08	0.03	0.02	0.03
Jalgaon	11.22	20.28	31.50	16.66	3.91	10.93
Kalyan Dombivali	35.13	60.19	95.32	44.85	10.26	40.21
Kolhapur	4.05	17.95	22.00	15.37	2.87	3.76
Malegaon	6.36	5.91	12.27	3.22	2.06	6.99
Mira-Bhayander	23.03	46.92	69.95	40.60	12.20	17.15
Nagpur	74.29	62.86	137.15	48.99	42.88	45.28
Nanded-Waghala	12.99	10.54	23.53	5.76	7.95	9.82
Nasik	34.35	24.81	59.16	29.25	13.47	16.44
Navi Mumbai	54.90	137.46	192.36	107.16	45.23	39.97
Pimpri Chinchwad	15.21	40.10	55.31	34.91	14.02	6.38
Pune	27.40	30.87	58.27	19.43	65.78	-26.94
Sangli	5.46	9.57	15.03	2.06	6.89	6.08
Solapur	20.05	17.76	37.81	13.47	4.49	19.85
Thane	68.42	135.10	203.52	103.54	25.98	74.00
Ulhasnagar	93.07	35.74	128.81	11.77	13.70	103.34
<b>TOTAL</b>	<b>3390.95</b>	<b>3611.34</b>	<b>7002.29</b>	<b>2218.78</b>	<b>561.11</b>	<b>4222.40</b>