

# **Appendices**

**Appendix 1.1**  
**(Reference: Paragraph 1.1; Page 1)**  
**Details of Departments, Public Sector Undertakings and Autonomous Bodies**

Departments	Public Sector Undertaking	Autonomous Bodies
1. Health and Family Welfare	1. Haryana Medical Service Corporation Limited	1. Haryana State Commission for Child Rights
2. Medical Education & Research Department	2. Haryana Backward Classes and Economically Weaker Section Kalyan Nigam Limited	2. Haryana Building & Other Construction Workers Welfare Board, Panchkula
3. Saimik and Ardh Saimik Welfare Department	3. Haryana Schedule Caste Financial Development Corporation Limited	3. Haryana Labour Welfare Board, Panchkula
4. Social Justice & Empowerment Department	4. Haryana Women Development Corporation Limited	4. Haryana State Agriculture Marketing Board
5. Welfare of SC & BC Department	5. Haryana State Financial Services Limited	5. Haryana Electricity Regulatory Commission
6. Women and Child Development	6. Haryana Agro Industries Corporation Limited	6. Haryana Khadi & Village Industries Board Panchkula
7. Higher Education Department	7. Haryana Land Reclamation and Development Corporation Limited	7. Haryana Shehri Vikas Pradhikaran Panchkula (HSVP)
8. Labour Department	8. Haryana Seeds Development Corporation Limited	8. Haryana Real Estate Regulatory Authority, Panchkula
9. School Education Department	9. Haryana State Warehousing Corporation	9. Haryana Real Estate Regulatory Authority, Gurugram
10. Skill Development & Industrial Training Department	10. Haryana International Horticulture Marketing Corporation Limited	10. Gurugram Metropolitan Development Authority
11. Sports and Youth Department Affairs	11. Haryana Minor Irrigation and Tubewells Corporation Limited	11. Housing Board Haryana, Panchkula
12. Technical Education Department	12. Haryana Power Generation Corporation Limited	12. State Compensatory Afforestation Management and Planning authority
13. Employment Department	13. Haryana Vidyut Prasaran Nigam Limited	13. Haryana State Biodiversity Board
14. Excise and Taxation Department	14. Uttar Haryana Biji Vitran Nigam Limited	14. District Legal Service Authority, Ambala
15. Finance Department	15. Dakshin Haryana Biji Vitran Nigam Limited	15. District Legal Service Authority, Kurukshetra
16. Rural Development Department	16. Haryana State Industrial and Infrastructure Development Corporation Limited	16. District Legal Service Authority, Karnal
17. Agriculture & Farmers' Welfare Department	17. Panipat Plastic Park Haryana Limited	17. District Legal Service Authority, Narnaul
18. Animal Husbandry & Dairying Department	18. Haryana State Housing Finance Corporation Limited (Non-Working)	18. District Legal Service Authority, Fatehabad
19. Cooperation Department	19. Haryana Concast Limited (Non-Working)	19. District Legal Service Authority, Jind
20. Fisheries Department	20. Haryana Minerals Limited (Non-Working)	20. District Legal Service Authority, Kaithal
21. Food, Civil Supplies & Consumer Affairs Department	21. Haryana Financial Corporation Limited	21. District Legal Service Authority, Hisar
22. Horticulture Department	22. Haryana Roadways Engineering Corporation Limited	22. District Legal Service Authority, Sirsa
23. Irrigation & Water Resources Department	23. Haryana Mass Rapid Transport Limited	23. District Legal Service Authority, Yamuna Nagar
24. New and Renewable Energy	24. Gurgaon Technology Park Limited	24. District Legal Service Authority, Faridabad
25. Power Department	25. Gurugram Metropolitan City Bus Limited	25. District Legal Service Authority, Panipat



Departments	Public Sector Undertaking	Autonomous Bodies
26. Industry and Commerce	26. Faridabad Smart City Limited	26. District Legal Service Authority, Bhiwani
27. Mines and Geology	27. Faridabad City Transport Services Limited	27. District Legal Service Authority, Panchkula
28. Civil Aviation	28. Karnal Smart City Limited	28. District Legal Service Authority, Rewari
29. Transport Department	29. Haryana Forest Development Corporation Limited	29. District Legal Service Authority, Gurugram
30. Town and Country Planning	30. Haryana State Roads and Bridges Development Corporation Limited	30. District Legal Service Authority, Mewat
31. Urban Local Bodies	31. Haryana Orbital Rail Corporation Limited	31. District Legal Service Authority, Palwal
32. Housing for All	32. Haryana Rail Infrastructure Development Corporation Limited	32. District Legal Service Authority, Rohtak
33. Environment & Climate Department	33. Haryana State Electronics Development Corporation Limited	33. District Legal Service Authority, Sonapat
34. Forest Department	34. HARTRON Informatics Limited	34. District Legal Service Authority, Jhajjar
35. Science and Technology Department	35. Haryana Police Housing Corporation Limited	35. District Legal Service Authority, Charkhi Dadri
36. Public Health Engineering Department	36. Haryana Tourism Corporation Limited	36. Haryana State Legal Services Authority, Panchkula
37. PWD (Buildings and Roads)	37. Drone Imaging and Information Services of Haryana Limited	37. Haryana Waqf Board, Ambala Cantt.
38. Information and Technology		38. Haryana Human Rights Commission
39. Home		
40. Art and Culture		
41. Archives		
42. Archaeology and Museum		
43. Tourism		
44. Principal Secretary to Election Department		
45. Citizen Resource Information Department		
46. General Administration		
47. State Election Commission		
48. Secretary to Haryana Vidhan Sabha		
49. Revenue And Disaster Management Department		
50. Printing and Stationery		
51. Secretary to Governor		
52. Information, Public Relations and Language		
53. Department of International Cooperation		

## Appendix 1.2

(Reference: Paragraph 1.6; Page 4)

**Statement showing details of category-wise amount of outstanding paragraphs**

(₹ in crore)

Sr. No.	Category/Nature of Irregularities	Number of Paragraphs	Money Value
1.	Loss due to theft, fire, misappropriation	318	103.73
2.	Recoverable amount	2,361	1,26,776.81
3.	Non-compliance of rules	5,308	18,855.18
4.	Avoidable/irregular/excess expenditure	3,153	15,196.66
5.	Unfruitful/wasteful expenditure	867	2,578.36
6.	Shortcoming in implementation of scheme/execution of work	1,836	8,717.84
7.	Non-utilisation/blockade of funds	1,169	10,082.44
8.	Non-verification of store/stock	1,937	1,123.55
9.	Loss of revenue due to non-utilisation of means	2,774	27,970.07
10.	Miscellaneous	4,639	12,001.55
	<b>Total</b>	<b>24,362</b>	<b>2,23,406.19</b>

**Appendix 1.3**

**(Reference: Paragraph 1.7.2; Page 5)**

**List of paragraphs where recovery has been pointed out but no action has been taken by the Administrative Departments as on 31 March 2024**

Sr. No.	Name of Administrative Department	Year of Audit Report	Paragraph Number	Amount (₹ in lakh)
1.	Agriculture	2015-16	2.1.7.5	12,644.00
			2.1.9.3	21.41
		2017-18	2.1.6.3	2,222.00
2.	Animal Husbandry	2000-01	3.4	21.96
3.	Food and Supplies	2014-15	3.6.2	2,446.00
			3.6.3	240.00
		2017-18	3.4	2,404.00
		2018-19	3.5	299.00
4.	Town and Country Planning (HUDA)	2000-01	3.16	15,529.00
		2001-02	6.1	4,055.00
		2011-12	2.3.10.8	16,700.00
		2013-14	2.3.10.6	1,266.00
			2.3.10.11	37,386.00
			3.2	84.64
		2015-16	3.18 (a)	41,715.00
			3.18 (b)	1,077.00
		2017-18	3.17 A	16,086.00
			3.17 B	1,972.00
			3.18.7 (ii)	1,955.00
			3.18.10	4,678.00
			3.18.11 (i)	342.00
			3.18.11 (ii)	2,025.00
			3.18.11 (iii)	2,690.00
		2018-19	3.14.3.3	3,189.00
			3.14.3.4	713.00
			3.14.3.8	1,314.00
			3.14.3.11	96.00
			3.14.4.3	1,122.00
3.14.4.5	72.00			
2019-20	3.15	561.00		
	2.4	295.00		
	2.5	161.00		
5.	Social Justice and Empowerment (District Red Cross Society)	2011-12	3.3.5.1	1,572.00
6.	PWD (Irrigation Branch)	2010-11	3.1.2	62.25
7.	Labour and Employment	2011-12	2.1.9.4	79.95
		2019-20	2.6	154.00
8.	Urban Local Bodies	2012-13	2.2.8.6	10,182.00
9.	Cooperation	2012-13	2.5.7.4	494.00
			2.5.9.3	767.00
10.	Health and Family Welfare	2012-13	3.6	125.00
11.	School Education	2017-18	3.16.2.5	12.30
		2018-19	3.3	469.00
12.	Public Works Department (B&R)	2015-16	3.12.4.1	53.00
13.	Higher Education Department	2016-17	2.1.7.3	118.00
			2.1.8 (b)	2,631.00

Sr. No.	Name of Administrative Department	Year of Audit Report	Paragraph Number	Amount (₹ in lakh)
14.	Home (Jail) Department	2016-17	2.2.7.3	112.00
15.	Housing	2018-19	3.9	41.00
16.	Forest	2018-19	3.7.4 (ii)	274.00
17.	Welfare of SC & BC	2018-19	2.1.8.1	1,898.00
			2.1.8.2	965.00
			2.1.8.3	11.56
			2.1.8.4 (i)	48.47
			2.1.8.4 (ii)	1.57
			2.1.8.5 (i)	6.36
			2.1.8.5 (ii)	14.89
			2.1.8.6	78.91
			2.1.8.7	474.00
			2.1.8.8	85.86
			2.1.8.10	1.52
		2.1.8.11	2.54	
<b>Total</b>				<b>1,96,117.19</b>

## Appendix 1.4

(Reference: Paragraph 1.7.3; Page 6)

## List of PAC and COPU reports and the number of pending recommendations on CAG Report as on 31 March 2024

Sr. No.	PAC			COPU		
	PAC Report No.	Year of PAC report	Pending Recommendations	COPU Report Number	No. of COPU Paras	Year of COPU report
1.	16 <sup>th</sup>	1979-80	1	16 <sup>th</sup>	1	1983-84
2.	22 <sup>nd</sup>	1984-85	1	19 <sup>th</sup>	1	1984-85
3.	23 <sup>rd</sup>	1985-86	1	23 <sup>rd</sup>	3	1986-87
4.	26 <sup>th</sup>	1987-88	1	35 <sup>th</sup>	1	1992-93
5.	32 <sup>nd</sup>	1990-91	1	38 <sup>th</sup>	1	1994-95
6.	34 <sup>th</sup>	1991-92	5	41 <sup>st</sup>	1	1996-97
7.	36 <sup>th</sup>	1992-93	3	42 <sup>nd</sup>	1	1996-97
8.	38 <sup>th</sup>	1993-94	2	43 <sup>rd</sup>	3	1997-98
9.	40 <sup>th</sup>	1994-95	3	45 <sup>th</sup>	14	2000-01
10.	42 <sup>nd</sup>	1995-96	1	47 <sup>th</sup>	14	2000-01
11.	44 <sup>th</sup>	1996-97	6	48 <sup>th</sup>	10	2000-01
12.	46 <sup>th</sup>	1997-98	3	49 <sup>th</sup>	6	2001-02
13.	50 <sup>th</sup>	2000-01	16	50 <sup>th</sup>	4	2002-03
14.	52 <sup>nd</sup>	2001-02	5	51 <sup>st</sup>	3	2003-04
15.	54 <sup>th</sup>	2002-03	7	52 <sup>nd</sup>	4	2005-06
16.	56 <sup>th</sup>	2003-04	11	53 <sup>rd</sup>	15	2006-07
17.	58 <sup>th</sup>	2005-06	13	55 <sup>th</sup>	6	2008-09
18.	60 <sup>th</sup>	2006-07	18	56 <sup>th</sup>	3	2009-10
19.	61 <sup>st</sup>	2007-08	5	57 <sup>th</sup>	5	2010-11
20.	62 <sup>nd</sup>	2007-08	8	58 <sup>th</sup>	5	2011-12
21.	63 <sup>rd</sup>	2008-09	12	59 <sup>th</sup>	10	2012-13
22.	64 <sup>th</sup>	2009-10	7	60 <sup>th</sup>	5	2013-14
23.	65 <sup>th</sup>	2010-11	12	61 <sup>st</sup>	10	2014-15
24.	67 <sup>th</sup>	2011-12	4	62 <sup>nd</sup>	13	2015-16
25.	68 <sup>th</sup>	2012-13	11	63 <sup>rd</sup>	15	2016-17
26.	70 <sup>th</sup>	2013-14	15	64 <sup>th</sup>	18	2017-18
27.	71 <sup>st</sup>	2014-15	3	65 <sup>th</sup>	7	2018-19
28.	72 <sup>nd</sup>	2015-16	26	66 <sup>th</sup>	9	2019-20
29.	73 <sup>rd</sup>	2016-17	37	67 <sup>th</sup>	18	2020-21
30.	74 <sup>th</sup>	2016-17	35	68 <sup>th</sup>	19	2021-22
31.	75 <sup>th</sup>	2017-18	32	69 <sup>th</sup>	22	2022-23
32.	77 <sup>th</sup>	2017-18	22	70 <sup>th</sup>	12	2023-24
33.	79 <sup>th</sup>	2018-19	32	<b>Total</b>	<b>259</b>	
34.	80 <sup>th</sup>	2019-20	22			
35.	81 <sup>st</sup>	2020-21	36			
36.	82 <sup>nd</sup>	2021-22	66			
37.	83 <sup>rd</sup>	2022-23	25			
38.	88 <sup>th</sup>	2023-24	34			
39.	89 <sup>th</sup>	2023-24	89			
		<b>Total</b>	<b>631</b>			

## Appendix 1.5

(Reference: Paragraph 1.7.3; Page 6)

## Department/PSU-wise pending recommendations of PAC and COPU on CAG Reports as on 31 March 2024

Public Accounts Committee			Committee on Public Undertakings		
Sr. No	Name of Department	PR	Sr. No	Name of Department	PR
1.	Administration of Justice	1	1.	Power Department	67
2.	Agriculture and Farmer Welfare	30	2.	Haryana State Industrial and Infrastructure Development Corporation	25
3.	Animal Husbandry	14	3.	Haryana Financial Corporation	13
4.	Archeology and Museum	1	4.	Haryana Agro Industries Corporation Limited	46
5.	Architecture	1	5.	Haryana Agro Industries Corporation Limited & Haryana Warehousing Corporation Limited	9
6.	Civil Aviation	1	6.	Haryana Land Reclamation & Development Corporation Limited	1
7.	Civil Secretariate, General Administration	3	7.	Haryana Warehousing Corporation Limited	20
8.	Commissioner Hisar	7	8.	Haryana Seeds Development Corporation Limited	4
9.	Co-operative	12	9.	Haryana Tourism Corporation Limited	3
10.	Development & Panchayats	9	10.	Haryana Forest Development Corporation Limited	2
11.	District Gurgaon	8	11.	Haryana Schedule Castes Finance and Development Corporation Limited	2
12.	Education including HSSPP, Elementary, School Education, Higher Education	32	12.	Haryana State Roads and Bridges Development Corporation Limited	14
13.	Environment and climate change	23	13.	Haryana Police Housing Corporation Limited	3
14.	Excise and Taxation including Commercial Taxes, Prohibition & Excise	1	14.	Haryana Women Development Corporation Limited	1
15.	Finance including Lotteries, Justice, Finance, Treasury & Accounts	22	15.	Haryana Backward Classes and Economically Weaker Section Kalyan Nigam Private Limited	6
16.	Food, Civil supplies and Consumer Affairs	35	16.	Haryana State Electronics Development Corporation Limited	1
17.	Forest and Wildlife	9	17.	Haryana State Small Minor Irrigation and Tubewells Corporation Limited	3
18.	General	13	18.	Haryana State Small Industries Export Corporation Limited	5
19.	Health including Food and Drug Administration, Family Welfare	43	19.	Haryana Mineral Limited	18
20.	Home	12	20.	Haryana Urban Development Authority	15
			21.	Haryana Medical Services Corporation Limited	1
21.	Housing	2		<b>Total</b>	<b>259</b>
22.	Skill Development and Industrial Training	8			
23.	Industries & Commerce including MSME, Supplies & Disposal	10			
24.	Information, Public Relation and cultural Affairs	2			
25.	Irrigation	23			
26.	Labour and Employment	12			
27.	Medical Education and Research	6			
28.	P.W.D. (B&R)	16			
29.	Other Administrative Services	2			
30.	Printing & Stationery	3			
31.	PWD (Public Health)	24			
32.	Renewable Energy	2			
33.	Revenue and Disaster Management	22			
34.	Rural Development	19			

Public Accounts Committee			Committee on Public Undertakings		
Sr. No	Name of Department	PR	Sr. No	Name of Department	PR
35.	Social Welfare, Social Justice and Empowerment	33			
36.	Sports and Youth Affairs	6			
37.	Technical Education	4			
38.	Town & Country Planning	89			
39.	Transport	31			
40.	Urban local bodies, Urban Development, Colonization, Local Self Govt	14			
41.	Welfare of SC & BC	24			
42.	Women and child development	2			
	<b>Total</b>	<b>631</b>			

**PR: Pending recommendation**

### Appendix 2.1

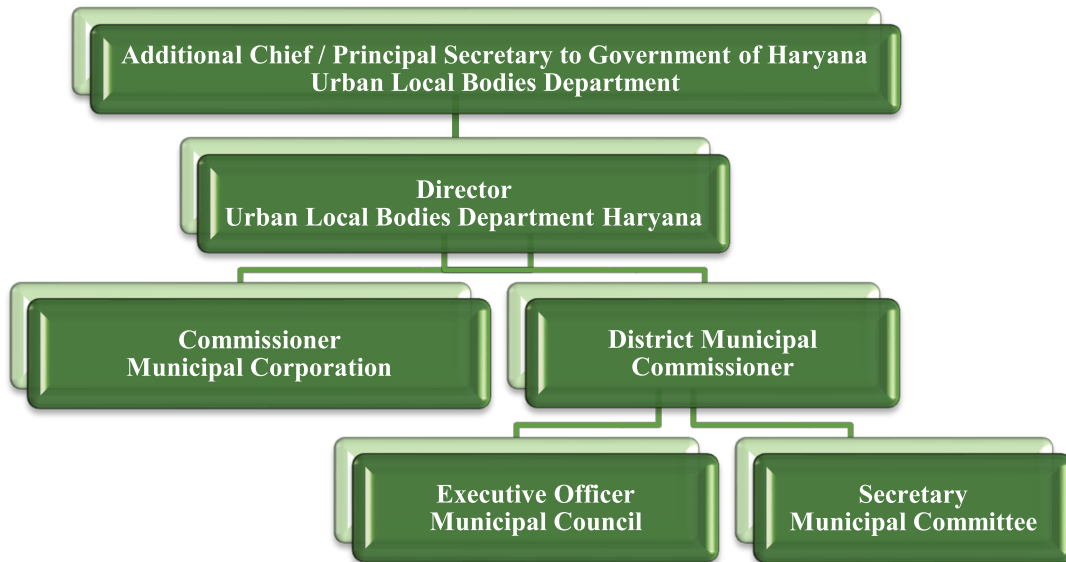
(Reference: Paragraph 2.1.3; Page 8)

#### Regulatory framework governing the management of different types of waste

S. No	Type of waste	Regulatory framework
1	Municipal solid waste	<ul style="list-style-type: none"> <li>MSW (Management and Handling) Rules, 2000</li> <li>MSW Management Manual, 2016</li> <li>National Environment Policy, 2006</li> <li>Solid Waste Management Rules, 2016</li> </ul>
2	Plastic waste	<ul style="list-style-type: none"> <li>Plastic Waste (Management &amp; Handling) Rules, 2011</li> <li>Plastic Waste Management Rules, 2016</li> </ul>
3	Hazardous waste	<ul style="list-style-type: none"> <li>Solid Waste Management Rules, 2016</li> </ul>
4	Construction and Demolition waste	<ul style="list-style-type: none"> <li>Construction and Demolition Waste Management Rules, 2016</li> </ul>
5	Slaughter House Waste	<ul style="list-style-type: none"> <li>Prevention of Cruelty to Animals (Slaughterhouse) Rules, 2001</li> <li>Water (Prevention and Control of Pollution) Act, 1974</li> </ul>
6	Sanitary Waste	<ul style="list-style-type: none"> <li>Solid Waste Management Rules, 2016</li> </ul>



**Appendix 2.2**  
**(Reference: Paragraph 2.1.4; Page 8)**  
**Organisational structure**



(Source: Information furnished by DULB)

## Appendix 2.3

(Reference: Paragraph 2.4; Page 10)

## List of 18 selected ULBs

Sl. No.	Name of ULB
<b>Municipal Corporations</b>	
1	Hisar
2	Panipat
3	Gurugram
4	Faridabad
5	Sonipat
6	Panchkula
<b>Municipal Councils</b>	
7	Kalka
8	Kaithal
9	Tohana
10	Bahadurgarh
11	Narnaul
12	Palwal
<b>Municipal Committees</b>	
13	Nilokheri
14	Shahabad
15	Uklana
16	Beri
17	Punhana
18	Hailymandi

### Appendix 2.4

(Reference: Paragraph 2.6.4; Page 13)

**Statement showing status of demarcation of separate space in the development plan for group housing or commercial, institutional or any other non-residential complex exceeding 200 dwelling or having a plot area exceeding 5,000 square meters**

Sl. No	Name of group housing, commercial, institutional complex	Date Sanction of development plan	Total area exceeding 5,000 square meters
1.	M/s Abhinav Project Private Limited	30 September 2021	16,718.57
2.	Finest Promoters Private Limited	31 March 2021	5,597.974
3.	M/s Kapoor Industries LLP	15 April 2022	11,735.836
4.	M/s Ninaniya Estate Limited	20 April 2017	17,455.66
5.	M/s Sona Foundation Gurugram	27 September 2022	16,414.99
6.	M/s Rajendra Kumar Sharma	27 September 2021	8,346.66
7.	M/s Pickwell	31 March 2022	5,601.45
8.	M/s Kapoor Industries LLP	13 September 2019	9,257.14
9.	M/s Indian Transformers & Electricals	06 December 2021	5,253.78
10.	M/s Edexperiential & Infraservices LLP	11 November 2021	12,317.56
11.	M/s Rajshri Yadav and Smt Gitanjali Yadav	29 November 2019	8,574.24
12.	M/s Vera Edu Infra Private Limited	18 October 2019	13,253.34
13.	Sh Satbir Singh Punia	17 December 2021	24,029.00
14.	M/s Jubilant Malls Private Limited New Delhi	06 July 2022	15,904.10

(Source: Information furnished by ULBs and DULB)

## Appendix 2.5

(Reference: Paragraph 2.6.6; Page 14)

## Statement showing framing of Solid Waste Management byelaws by test checked ULBs

Sl. No.	Name of ULB	Due date of byelaws	Actual date of notification	Total delay (in days)	Delay <sup>1</sup> attributable to ULB (in days)
<b>Municipal Corporations</b>					
1	Hisar	9 April 2017	19 July 2019	831	106
2	Panipat	9 April 2017	1 September 2019	875	150
3	Gurugram	9 April 2017	Not yet framed	-	-
4	Faridabad	9 April 2017	1 January 2021	1,363	638
5	Sonipat	9 April 2017	Not yet framed	-	-
6	Panchkula	9 April 2017	24 June 2019	806	81
<b>Municipal Councils</b>					
7	Kalka	17 September 2020	17 December 2021	456	61
8	Kaithal	9 April 2017	1 September 2019	875	150
9	Tohana	9 April 2017	1 August 2019	844	119
10	Bahadurgarh	9 April 2017	1 August 2019	844	119
11	Narnaul	9 April 2017	1 October 2019	905	180
12	Palwal	9 April 2017	1 August 2019	844	119
<b>Municipal Committees</b>					
13	Nilokheri	9 April 2017	1 July 2019	813	88
14	Shahabad	9 April 2017	Not yet framed	-	-
15	Uklana	9 April 2017	5 July 2019	817	92
16	Beri	9 April 2017	1 August 2019	844	119
17	Punhana	9 April 2017	20 August 2019	863	138
18	Hellymandi	9 April 2017	1 July 2019	813	88

(Source: Information furnished by ULBs)

<sup>1</sup> Delay was calculated from the date (5 March 2019) of issue of SWM byelaws by DULB and date of byelaws issued by concerned ULBs after allowing the 30 days for notifying the same.

**Appendix 2.6**  
**(Reference: Paragraph 2.6.9; Page 16)**

**Status of Service Level Benchmarks achievement in 18 test checked ULBs**

Particular	Year	Corporations						Councils						Committees					
		Hisar	Panipat	Faridabad	Gurugram*	Sonapat	Panchkula*	Kalka	Kaithal	Tohana	Bahadurgarh	Narnaul	Palwal	Nilokheri	Shahabad	Uklana	Beri	Punhana	Helly Mandi
Household level coverage of solid waste management services	2017-18	50	38	70	-	100	-	NA	10	65	85	30	32	100	50	30	80	32	30
	2018-19	50	100	88	-	100	-	NA	10	70	90	50	32	100	60	40	100	47	30
	2019-20	50	100	90	-	100	-	NA	100	85	95	70	32	100	100	50	100	47	30
	2020-21	80	100	92	-	100	-	80	100	85	100	80	75	100	100	60	100	47	55
	2021-22	90	100	94	-	100	-	80	100	95	100	100	90	100	100	80	100	47	70
Efficiency of collection of municipal solid waste	2017-18	50	100	70	-	100	-	NA	10	65	85	30	32	100	60	30	80	33	30
	2018-19	50	100	88	-	100	-	NA	10	70	90	50	32	100	80	40	100	46	30
	2019-20	50	100	90	-	100	-	NA	100	85	95	70	32	100	100	50	100	46	30
	2020-21	80	100	92	-	100	-	100	100	85	100	80	75	100	100	60	100	46	55
	2021-22	90	100	94	-	100	-	100	100	95	100	100	90	100	100	80	100	46	70
Extent of segregation of municipal solid waste	2017-18	50	0	22	-	40	-	NA	0	65	30	0	32	90	30	40	0	0	30
	2018-19	50	40	34	-	60	-	NA	0	70	40	0	32	90	40	20	0	0	30
	2019-20	50	40	55	-	80	-	NA	70	85	50	40	32	90	60	50	20	0	30
	2020-21	80	100	60	-	100	-	80	80	85	60	70	74	90	100	60	30	0	55
	2021-22	90	100	66	-	100	-	80	20	95	70	70	74	100	100	80	50	0	65
Extent of municipal solid waste recovered	2017-18	50	80	12	-	20	-	NA	0	65	10	10	32	80	10	5	0	0	30
	2018-19	50	80	12	-	40	-	NA	0	70	20	10	32	80	10	10	0	0	30
	2019-20	50	80	35	-	60	-	NA	70	85	30	30	32	80	30	10	0	0	30
	2020-21	60	80	47	-	80	-	NA	80	85	40	50	32	80	50	10	0	0	30
	2021-22	80	80	52	-	100	-	NA	20	95	60	60	90	80	70	80	20	0	70
Extent of scientific disposal of municipal solid waste	2017-18	50	0	0	-	0	-	NA	0	65	30	0	32	0	0	5	0	0	30
	2018-19	50	0	0	-	0	-	NA	0	70	40	0	32	0	0	10	0	0	30
	2019-20	50	0	0	-	0	-	NA	0	85	55	0	32	0	0	50	30	0	30
	2020-21	60	0	0	-	100	-	60	100	85	65	0	32	0	0	60	40	0	30
	2021-22	80	80	0	-	100	-	90	100	95	85	0	90	100	0	80	50	0	70
Efficiency in redressal of customer complaints	2017-18	50	80	100	-	100	-	NA	100	65	40	70	100	80	30	30	75	100	100
	2018-19	50	80	100	-	100	-	NA	100	70	50	70	100	80	40	40	75	100	100
	2019-20	50	80	100	-	100	-	NA	100	85	60	90	100	80	50	50	78	100	100
	2020-21	60	80	100	-	100	-	80	100	85	80	100	100	80	60	70	78	100	100
	2021-22	80	80	100	-	100	-	80	100	95	80	100	100	80	80	80	80	78	100

Particular	Year	Corporations						Councils						Committees					
		Hisar	Panipat	Faridabad	Gurugram*	Sompat	Panchkula*	Kalka	Kaithal	Tohana	Bahadurgarh	Narnaul	Palwal	Nilokheri	Shahabad	Uklana	Beri	Punhana	Helly Mandi
Extent of cost recovery in SWM services	2017-18	50	0	0	-	20	-	NA	0	65	0	0	0	0	0	30	0	0	0
	2018-19	50	0	0	-	20	-	NA	0	70	0	0	0	0	0	40	10	0	0
	2019-20	60	0	0	-	40	-	NA	0	85	0	0	0	0	0	60	20	0	0
	2020-21	80	0	0	-	60	-	0	0	85	0	0	0	0	0	60	20	0	0
	2021-22	90	0	0	-	70	-	0	0	95	0	0	0	90	0	80	30	0	0
Efficiency in collection of SWM charges	2017-18	50	0	9	-	20	-	NA	0	65	0	0	0	0	30	0	0	0	0
	2018-19	50	0	12	-	20	-	NA	0	70	0	0	0	0	40	20	0	0	0
	2019-20	60	0	21	-	40	-	NA	0	85	0	0	0	0	60	30	0	0	0
	2020-21	70	0	0	-	60	-	0	0	85	0	0	0	0	60	30	0	0	0
	2021-22	80	0	0	-	60	-	0	0	85	0	0	80	0	80	40	0	0	0

\* The information was not provided by MC Panchkula and MC Gurugram.

(Source: Information furnished by ULBs)

Appendix 2.7

(Reference: Paragraphs 2.7.1 and 2.7.5; Page 20, 23)

Statement showing the percentage of segregation at source and percentage of door-to-door collection in 18 test checked ULBs

Particular	Year	Corporations						Councils						Committees					
		Hisar	Panipat	Faridabad	Gurugram	Sonapat	Panchkula	Kalka	Kaithal	Tohana	Bahadurgarh	Narnaul	Palwal	Nilokheri	Shahabad	Uklana	Beri	Punhana	HellyMandi
Efficiency of collection of municipal solid waste	2017-18	50	100	70	Not provided	100	Not provided	NA	10	65	85	30	32	100	60	30	80	33	30
	2018-19	50	100	88	Not provided	100	Not provided	NA	10	70	90	50	32	100	80	40	100	46	30
	2019-20	50	100	90	Not provided	100	Not provided	NA	100	85	95	70	32	100	100	50	100	46	30
	2020-21	80	100	92	Not provided	100	Not provided	100	100	85	100	80	75	100	100	60	100	46	55
	2021-22	90	100	94	Not provided	100	Not provided	100	100	95	100	100	90	100	100	80	100	46	70
	2017-18	50	0	22	Not provided	40	Not provided	NA	0	65	30	0	32	90	30	30	40	0	30
Extent of segregation of municipal solid waste	2018-19	50	40	34	Not provided	60	Not provided	NA	0	70	40	0	32	90	40	40	20	0	30
	2019-20	50	40	55	Not provided	80	Not provided	NA	70	85	50	40	32	90	60	50	20	0	30
	2020-21	80	100	60	Not provided	100	Not provided	80	80	85	60	70	74	90	100	60	30	0	55
	2021-22	90	100	66	Not provided	100	Not provided	80	20	95	70	70	74	100	100	80	50	0	65

(Source: Information furnished by ULBs)

**Appendix 2.8**  
**(Reference: Paragraph 2.7.6; Page 24)**  
**Status of MRFs in 18 test checked ULBs**

Particular	Year	Corporations						Councils						Committees						Total
		Hisar	Panipat	Faridabad	Gurugram	Sonapat	Panchkula	Kalka	Kaithal	Tohana	Bahadurgarh	Narnaul	Palwal	Nilokheri	Shahabad	Uklana	Beri	Punhana	Helly/Mandi	
Number of MRFs required	2017-18	10	NA	7	35	1	1	0	0	1	1	2	1	1	0	10	1	1	1	73
	2018-19	10	2	7	35	2	1	0	0	1	1	2	1	1	1	10	1	1	1	77
	2019-20	10	2	7	35	2	1	0	0	1	1	2	1	1	1	2	1	1	1	69
	2020-21	10	2	7	35	2	1	2	2	1	1	2	1	1	1	2	1	1	1	73
	2021+22	10	2	6	35	0	1	2	2	1	1	2	1	1	1	2	1	1	1	70
Number of available MRFs	2017-18	0	NA	6	0	1	1	0	0	0	1	0	0	1	0	0	0	0	0	11
	2018-19	1	2	6	0	2	1	0	0	0	1	0	0	1	1	1	0	0	1	17
	2019-20	3	2	6	5	2	1	0	0	0	1	0	0	1	1	0	0	0	1	23
	2020-21	7	2	7	4	2	1	1	0	0	1	3	1	1	1	1	1	0	1	34
	2021+22	7	2	6	5	0	1	1	1	1	1	0	3	1	1	1	1	0	1	33
Short fall in MRFs	2017-18	10	NA	1	35	0	0	0	0	1	0	2	0	0	10	1	1	0	62	
	2018-19	9	0	1	35	0	0	0	0	1	0	2	0	0	9	1	1	0	60	
	2019-20	7	0	1	30	0	0	0	0	1	0	2	0	0	2	1	1	0	46	
	2020-21	3	0	0	31	0	0	1	1	1	0	1	0	0	1	0	1	0	0	40
	2021+22	3	0	0	30	0	0	1	1	0	0	1	0	0	1	0	1	0	0	38

(Source: Information furnished by ULBs)



**Appendix 2.9**  
**(Reference: Paragraph 2.7.7; Page 25)**

**Status of Sweepers in 18 test checked ULBs**

Particular	Year	Corporations						Councils						Committees						Total
		Hisar	Panipat	Faridabad	Gurugram	Sonapat	Panchkula	Kalka	Kaithal	Tohana	Bahadurgarh	Narnaul	Palwal	Nilokheri	Shahabad	Uklana	Beri	Punhana	Helly/Mandi	
Number of Sweepers required	2017-18	657	1,784	4,250	2,850	850	1,190	NA	100	163	510	185	453	45	107	40	48	62	52	13,346
	2018-19	730	1,784	4,425	3,100	850	1,190	NA	100	171	525	186	453	45	107	43	49	62	52	13,872
	2019-20	811	1,784	4,475	3,702	1,068	1,190	NA	105	178	541	190	453	45	107	46	50	62	52	14,859
	2020-21	901	1,784	4,538	4,736	1,068	1,190	373	110	181	557	261	453	45	107	52	52	62	52	16,522
	2021-22	919	2,250	4,625	6,033	1,068	794	373	110	184	749	265	566	45	107	52	54	62	52	18,309
Number of Sweepers available	2017-18	705	NA	3,150	NA	432	963	NA	80	127	274	174	270	35	89	20	35	60	39	6,453
	2018-19	732	250	3,078	NA	418	960	NA	80	154	271	167	265	35	104	20	35	43	54	6,666
	2019-20	714	250	2,988	NA	685	958	NA	150	149	263	199	260	35	98	20	35	43	54	6,901
	2020-21	695	250	2,930	6,586	673	686	147	150	143	248	194	263	35	98	25	31	41	53	13,248
	2021-22	751	250	2,905	6,586	659	652	147	150	144	238	202	260	35	96	35	31	40	51	13,232
Shortage of Sweepers	2017-18	-	-	1,100	-	418	227	-	20	36	236	11	183	10	18	20	13	2	18	6,893
	2018-19	-	1,534	1,347	-	432	230	-	20	17	254	19	188	10	3	23	14	19	3	7,206
	2019-20	97	1,534	1,487	-	383	232	-	-	29	278	-	193	10	9	26	15	19	3	7,958
	2020-21	206	1,534	1,608	-	395	504	226	-	38	309	67	190	10	9	27	21	21	4	3,274
	2021-22	168	2,000	1,720	-	409	142	226	-	40	511	63	306	10	11	17	23	22	6	5,077

(Source: Information furnished by ULBs)

**Appendix 2.10**  
**(Reference: Paragraph 2.7.9; Page 26)**  
**Status of Vehicles in 14 test checked ULBs**

Particular	Year	Corporations		Councils							Committees					Total
		Hisar	Panchkula	Kalka	Kaithal	Tohana	Bahadurgarh	Narnaul	Palwal	Nilokheri	Shahabad	Uklana	Beri	Punhana	Helly Mandi	
Number of Vehicles required	2017-18	62	103	0	0	6	16	31	45	10	-	5	3	7	6	294
	2018-19	62	103	0	0	6	16	31	45	10	37	6	3	7	6	332
	2019-20	83	103	0	30	6	22	33	45	10	21	7	3	7	6	376
	2020-21	191	103	20	20	6	22	33	45	10	20	8	3	7	6	494
	2021-22	191	84	20	20	6	25	33	82	10	20	8	3	7	6	515
Number of Vehicles available	2017-18	31	103	0	0	6	16	13	22	10	-	2	3	3	6	215
	2018-19	31	103	0	0	6	16	13	22	10	21	2	3	3	6	236
	2019-20	62	103	0	14	6	22	23	22	10	21	4	3	3	6	299
	2020-21	95	103	14	20	6	22	33	20	10	20	5	3	3	6	360
	2021-22	95	84	13	20	6	25	33	82	10	20	5	3	3	6	405
Shortage of Vehicles	2017-18	31	0	0	0	0	0	18	23	0	-	3	0	4	0	79
	2018-19	31	0	0	0	0	0	18	23	0	16	4	0	4	0	96
	2019-20	21	0	0	16	0	0	10	23	0	0	3	0	4	0	77
	2020-21	96	0	6	0	0	0	0	25	0	0	3	0	4	0	134
	2021-22	96	0	7	0	0	0	0	0	0	0	3	0	4	0	110

(Source: Information furnished by ULBs)

**Appendix 2.11**  
**(Reference: Paragraph 2.7.11.1; Page 30)**

**Status of facilities at dump site in 13 test checked ULBs**

Sl No	Particular	Municipal Corporations				Municipal Councils			Municipal Committees			Total				
		Hisar	Panipat	Gurugram	Sonipat	Panchkula	Kaithal	Tohana	Bahadurgarh	Narnaul	Nilokheri	Shahabad	Uklana	Beri	Available	Not Available
1	Drinking Water	No	No	Yes	Yes	No	No	Yes	Yes	No	No	No	No	Yes	5	8
2	Toilet	No	No	Yes	Yes	No	No	Yes	Yes	No	Yes	No	No	No	5	8
3	Lighting	No	No	Yes	Yes	No	No	Yes	Yes	No	No	No	No	Yes	5	8
4	Fire protection Equipment	No	No	Yes	Yes	No	No	Yes	No	Yes	No	No	No	No	4	9
5	Weightbridge	No	No	Yes	Yes	No	No	Yes	Yes	No	No	No	No	No	4	9
6	Shelter for equipment & machinery	No	No	Yes	Yes	No	No	No	No	No	No	No	No	No	2	11
7	Watchman shed	No	Yes	Yes	Yes	Yes	Yes	Yes	No	No	Yes	No	No	No	7	6
8	Office Facility	No	No	Yes	Yes	Yes	No	Yes	Yes	No	No	No	No	No	5	8
9	Waste inspection facility	No	No	No	Yes	No	No	Yes	Yes	No	Yes	No	No	No	4	9
10	Vegetative covering and plantation	No	No	No	Yes	No	No	No	No	Yes	No	No	No	No	2	11
11	Storm water drains	No	No	Yes	No	Yes	No	No	No	No	No	No	No	No	3	10
12	Internal roads	No	Yes	Yes	Yes	No	No	No	No	No	No	No	No	No	4	9
13	Approach roads	Yes	Yes	Yes	Yes	No	No	Yes	Yes	No	Yes	No	No	Yes	8	5
14	Compound wall and Gate	No	No	Yes	Yes	Yes	No	Yes	No	Yes	Yes	No	No	No	7	6
15	Windrow platforms	No	No	Yes	No	No	No	No	Yes	No	No	No	No	No	2	11

(Source: Information furnished by ULBs)

Appendix 2.12

(Reference: Paragraph 2.7.11.3; Page 32)

Statement showing the Environmental Compensation on basis of "polluter pays principle" due to non-processing solid waste by ULBs in Haryana

Sl. No.	Name of MC	Waste generation (TPD)	Waste disposal (TPD)	Waste management capacity gap	Capital Cost		Per day O&M Cost		Per day Environmental externalities Cost						
					Marginal capital cost factor (₹ in lakh)	Capital cost (₹ in lakh)	Factor for O&M cost	No of days	O&M component (₹ in lakh)	Marginal cost of environmental externality per day	Actual Factor	Waste Management Capacity * Actual Factor	Applicable factor within Min-Max range	No of days	Environmental externality (₹ in lakh per day)
A	B	C	D	E=C-D	F	G=E*F	H	I	J=H*E*I	K	L=K*E/100000	M=L*E	N	O	P=N*O
1	Hisar	180	95	85	2.4	204	0.02	1	1.7	15	0.0128	1.08	0.05	1	0.05
2	Panipat	350	50	300	2.4	720	0.02	1	6.0	30	0.0900	27.00	0.15	1	0.15
3	Faridabad	800	734	66	2.4	158	0.02	1	1.3	15	0.0099	0.65	0.05	1	0.05
4	Gurugram	1,138	390	748	2.4	1,795	0.02	1	15.0	35	0.2618	195.83	0.35	1	0.35
5	Panchkula	90	68	22	2.4	53	0.02	1	0.4	15	0.0033	0.07	0.50	1	0.50
6	Kalka	30	27	3	2.4	7	0.02	1	0.1	15	0.0005	0.0014	0.01	1	0.01
7	Tohana	28.31	8	20.31	2.4	49	0.02	1	0.4	15	0.0030	0.06	0.05	1	0.05
8	Bahadurgarh	112	50	62	2.4	149	0.02	1	1.2	15	0.0093	0.58	0.05	1	0.05
9	Narnaul	28	6	22	2.4	53	0.02	1	0.4	15	0.0033	0.07	0.05	1	0.05
10	Palwal	100	80	20	2.4	48	0.02	1	0.4	15	0.0030	0.06	0.05	1	0.05
11	Shahabad	25	23.4	1.6	2.4	4	0.02	1	0.0	15	0.0002	0.0004	0.01	1	0.01
12	Uklana	9	3	6	2.4	14	0.02	1	0.1	15	0.0009	0.01	0.01	1	0.01
13	Beri	9	5	4	2.4	10	0.02	1	0.1	15	0.0006	0.002	0.01	1	0.01
14	Punhana	10	2	8	2.4	19	0.02	1	0.2	15	0.0012	0.01	0.02	1	0.02
15	Helly Mandi	10	0	10	2.4	24	0.02	1	0.2	15	0.0015	0.02	0.02	1	0.02
16	Ambala Sadhar	110	0	110	2.4	264	0.02	1	2.2	15	0.0165	1.82	0.05	1	0.05
17	Ambala	180	170	10	2.4	24	0.02	1	0.2	15	0.0015	0.02	0.02	1	0.02
18	Loharu	6.4	0	6.4	2.4	15	0.02	1	0.1	15	0.0010	0.01	0.01	1	0.01
19	Charkhidabri	22	16	6	2.4	14	0.02	1	0.1	15	0.0009	0.01	0.01	1	0.01
20	Fatehabad	31.38	10	21.38	2.4	51	0.02	1	0.4	15	0.0032	0.07	0.05	1	0.05
21	Ratia	16	0	16	2.4	38	0.02	1	0.3	15	0.0024	0.04	0.04	1	0.04
22	Bhuna	13.34	0	13.34	2.4	32	0.02	1	0.3	15	0.0020	0.03	0.03	1	0.03
23	Jakkhal Mandi	5.25	0	5.25	2.4	13	0.02	1	0.1	15	0.0008	0.00	0.01	1	0.01
24	Sohna	40.33	0	40.33	2.4	97	0.02	1	0.8	15	0.0060	0.24	0.05	1	0.05
25	Hansi	38	0	38	2.4	91	0.02	1	0.8	15	0.0057	0.22	0.05	1	0.05
26	Sisai	11.25	0	11.25	2.4	27	0.02	1	0.2	15	0.0017	0.02	0.02	1	0.02
27	Narnaund	8	3	5	2.4	12	0.02	1	0.1	15	0.0008	0.00	0.01	1	0.01
28	Julana	7	0	7	2.4	17	0.02	1	0.1	15	0.0011	0.01	0.01	1	0.01

Sl. No.	Name of MC	Waste generation (TPD)	Waste disposal (TPD)	Waste management capacity gap	Capital Cost		Per day O&M Cost		Per day Environmental externalities Cost				Environmental externality (₹ in lakh per day)		
					Marginal capital cost factor	Capital cost (₹ in lakh)	Factor for O&M cost	No of days	O&M component (₹ in lakh)	Marginal cost of environmental externality per day	Actual Factor	Waste Management Capacity Gap * Actual Factor		Applicable factor within Min-Max range	No of days
A	B	C	D	E=C-D	F	G=E*F	H	I	J=H*E*I	K	L=K*E/100000	M=L*E	N	O	P=N*O
29	Narwana	26	14	12	2.4	29	0.02	1	0.2	15	0.0018	0.02	0.02	1	0.02
30	Jhajjar	26	18	8	2.4	19	0.02	1	0.2	15	0.0012	0.01	0.01	1	0.01
31	Thanesar	80.2	56.15	24.05	2.4	58	0.02	1	0.5	15	0.0036	0.09	0.05	1	0.05
32	Ladwa	9.2	1.4	7.8	2.4	19	0.02	1	0.2	15	0.0012	0.01	0.01	1	0.01
33	Ismailabad	7.25	3.9	3.35	2.4	8	0.02	1	0.1	15	0.0005	0.00	0.01	1	0.01
34	Karnal	180	129	51	2.4	122	0.02	1	1.0	15	0.0077	0.39	0.05	1	0.05
35	Taraori	14.5	12.5	2	2.4	5	0.02	1	0.0	15	0.0003	0.00	0.01	1	0.01
36	Gharaunda	21.85	9.85	12	2.4	29	0.02	1	0.2	15	0.0018	0.02	0.02	1	0.02
37	Indri	8.51	0	8.51	2.4	20	0.02	1	0.2	15	0.0013	0.01	0.01	1	0.01
38	Atelmandi	6	0	6	2.4	14	0.02	1	0.1	15	0.0009	0.01	0.01	1	0.01
39	Nuh	9	0	9	2.4	22	0.02	1	0.2	15	0.0014	0.01	0.01	1	0.01
40	Ferozpur Jhinka	12	0	12	2.4	29	0.02	1	0.2	15	0.0018	0.02	0.02	1	0.02
41	Tauru	11.43	0	11.43	2.4	27	0.02	1	0.2	15	0.0017	0.02	0.02	1	0.02
42	Rohtak	160	130	30	2.4	72	0.02	1	0.6	15	0.0045	0.14	0.05	1	0.05
43	Rewari	86	70	16	2.4	38	0.02	1	0.3	15	0.0024	0.04	0.04	1	0.04
44	Bawal	6	3	3	2.4	7	0.02	1	0.1	15	0.0005	0.00	0.01	1	0.01
45	Gohana	32	2	30	2.4	72	0.02	1	0.6	15	0.0045	0.14	0.05	1	0.05
46	Kharakhoda	20	16.8	3.2	2.4	8	0.02	1	0.1	15	0.0005	0.00	0.01	1	0.01
47	Kundli	16.5	0	16.5	2.4	40	0.02	1	0.3	15	0.0025	0.04	0.04	1	0.04
48	Ellenabad	14	0	14	2.4	34	0.02	1	0.3	15	0.0021	0.03	0.03	1	0.03
49	Yamunanagar	272	125	147	2.4	353	0.02	1	2.9	15	0.0221	3.24	0.05	1	0.05
50	Sadhura	4.35	0	4.35	2.4	10	0.02	1	0.1	15	0.0007	0.00	0.01	1	0.01
<b>Total</b>					<b>Capital Cost</b>		<b>5,038</b>	<b>O&amp;M Cost</b>	<b>41.98</b>	<b>Environmental externalities Cost</b>				<b>2.28</b>	

(Source: Information furnished by HSPCB)

**Appendix 2.13**  
**(Reference: Paragraph 2.7.12; Page 34)**  
**Status of Legacy Waste in 18 test checked ULBs**

Sl No	Particular	Corporations					Councils					Committees					Total	
		Hisar	Panipat	Gurugram Faridabad	Sonipat	Panchkula-Kalka	Kaithal	Tohana	Bahadurgarh	Narnaul	Palwal	Nilokheri	Shahabad	Uklana	Beri	Punhana		Helly Mandi
1	Total quantity of Legacy Waste estimated (MT)	1,30,000	4,09,200	32,00,000	3,00,000	3,96,000	98,800	12,000	2,50,000	58,291	21,000	11,000	12,795	6,400	3,800	20,000	0	49,29,286
2	Revised quantity of Legacy waste (MT)	2,00,000	4,09,200	40,50,000	3,00,000	4,16,788	1,68,000	12,700	4,30,000	1,88,000	21,000	11,000	743	6,400	10,000	20,000	300	62,44,131
3	Whether work order for processing placed (Yes or No)	Yes	Yes	Yes	No	Yes	Yes	No	Yes	Yes	Yes	Yes	No	No	Yes	No	Yes	11 (cases work order placed)
4	Work completed or not (Yes or No)	No	No	No	No	No	No	No	No	No	Yes	Yes	No	No	No	No	Yes	3 (completed)
5	Quantity of legacy waste processed (In MT)	1,12,000	3,80,000	17,96,487	0	1,22,500	85,300	0	2,10,000	1,85,000	21,000	11,000	0	0	6,009	0	0	29,29,296
6	Quantity of legacy waste un-processed (In MT)	88,000	29,200	22,53,513	3,00,000	2,94,288	82,700	12,700	2,20,000	3,000	0	0	743	6,400	3,991	20,000	300	33,14,835

**(Source: Information furnished by ULBs)**

**Appendix 2.14**  
**(Reference: Paragraph 2.7.16.1; Page 37)**  
**Status of Challans issued in 16 test checked ULBs**

Particular	Year	Corporations						Councils						Committees						Total
		Hisar	Panipat	Faridabad	Gurugram	Sonapat	Panchkula	Kalka	Kaithal	Bahadurgarh	Narnaul	Palwal	Nilokheri	Shahabad	Uklana	Beri	Punhana			
No. of challans issued	2017-18	0	53	0	102	1	140	0	0	6	0	0	0	0	0	6	0	308		
	2018-19	10	86	0	123	10	285	0	0	6	0	0	0	30	3	4	0	557		
	2019-20	25	117	468	613	173	364	0	22	8	0	0	62	35	8	6	27	1,928		
	2020-21	13	40	47	954	40	60	4	0	18	13	47	73	2	10	8	0	1,329		
	2021-22	22	0	3,630	1,850	40	10	32	0	10	2	9	64	34	10	10	2	5,725		
	Penalty imposed (amount in ₹)		0	1,55,000	0	65,000	5,000	70,000	0	0	3,000	0	0	0	0	0	10,500	0	3,08,500	
Penalty amount recovered (amount in ₹)	2018-19	1,04,500	1,61,000	0	72,500	50,000	1,42,500	0	0	3,000	0	0	0	15,000	1,500	2,500	0	5,52,500		
	2019-20	1,12,000	94,000	9,000	12,71,000	1,73,500	1,82,000	0	11,000	8,000	0	0	42,500	17,500	3,200	3,500	21,500	19,48,700		
	2020-21	43,460	47,000	30,500	7,04,500	30,000	24,600	2,000	0	10,000	1,34,000	34,100	22,900	1,000	4,200	4,500	0	10,92,760		
	2021-22	31,800	0	45,35,500	16,30,000	44,000	5,000	11,900	0	10,000	4,000	4,000	16,250	42,500	4,200	5,500	1,000	63,45,650		
	2017-18	0	0	0	40,000	5,000	70,000	0	0	3,000	0	0	0	0	0	10,500	0	1,28,500		
	2018-19	5,500	0	0	52,500	50,000	1,42,500	0	0	3,000	0	0	0	15,000	1,500	2,500	0	2,72,500		
Percentage of amount recovered	2019-20	4,500	0	9,000	4,44,000	1,73,500	1,82,000	0	11,000	8,000	0	0	19,250	14,500	3,200	3,500	21,500	8,93,950		
	2020-21	11,960	0	30,500	2,52,000	30,000	24,600	2,000	0	10,000	3,000	34,100	14,600	1,000	4,200	4,500	0	4,22,460		
	2021-22	31,800	0	2,49,000	10,03,500	44,000	5,000	11,900	0	10,000	1,200	4,000	12,900	22,000	4,200	5,000	1,000	14,05,500		
	2017-18	0	0	0	62	100	100	0	0	100	0	0	0	0	0	100	0	-		
	2018-19	5	0	0	72	100	100	0	0	100	0	0	0	100	100	100	0	-		
	2019-20	4	0	100	35	100	100	0	100	100	0	0	45	83	100	100	100	-		
2020-21	28	0	100	36	100	100	100	0	100	2	100	64	100	100	100	100	0			
2021-22	100	0	5	62	100	100	100	0	100	30	100	79	52	100	91	100	-			

(Source: Information furnished by ULBs)

## Appendix 2.15

(Reference: Paragraph 2.8.1; Page 41)

## Detail of clusters formed in Haryana for Integrated Solid Waste Management

Sr. No.	Name of cluster	No. of ULBs in the Cluster	Name of ULBs Covered under cluster	Status	Technology Adopted for processing of SWM
1	Sonipat-Panipat	4	Gannuar, Samalkha, Panipat & Sonipat	Commissioned (August 2021)	Waste to Energy
2	Faridabad-Gurugram	2	Faridabad & Gurugram	Awarded (August 2017) - not yet Commissioned	Waste to Energy
3	Bhiwani	5	Bhiwani, Bawani Khara, Charkhi Dadri, Loharu & Badhra	Awarded (December 2022) - not yet Commissioned	Waste to Compost
4	Sirsa	5	Sirsa, Rania, Ellenabad, Kalanwali & Mandi Dabwali	Awarded (November 2022) - not yet Commissioned	Waste to Compost
5	Karnal-Kaithal-Kurukshetra	18	Indri, Nilokheri, Tarori, Karnal, Gharaunda, Nissing, Assandh, Thanesar, Shahbad, Ladwa, Kaithal, Kalayat, Rajound, Cheeka, Pundri, Pehowa, Ismailabad & Siwan	Awarded (November 2022) - not yet Commissioned	Waste to Compost
6	Ambala-Yamunanagar	6	Ambala, Naraingarh, Yamuna Nagar, Radaur, Barara & Sadhura	Not yet awarded	Open technology
7	Rohtak-Bahadurgarh-Jhajjar	13	Kalanaur, Meham, Rohtak, Gohana, Bahadurgarh, Kharkhoda, Julana, Jhajjar, Sampala, Beri, Badli, Ateimandi & Kundli	Not yet awarded	Open technology
8	Panchkula	2	Panchkula & Kalika	Not yet awarded	Open technology
9	Hisar- Fatehabad	11	Hisar, Barwala, Hansi, Siwani, Fatehabad, Buna, Uklana Mandi, Ratia, Tohana, Jhaka Mandi & Adampur	Not yet awarded	Open technology
10	Jind	7	Jind, Narwana, Safidon, Uchana, Namaund, Sisai & Bass	Not yet awarded	Open technology
11	Manesar-Rewari	6	Bawal, Dharuhera, Rewari, Mahendergarh, Kanina & Manesar	Not yet awarded	Open technology
12	Palwal- Puhana	8	Punhana, F/Jhirkha, Hathin, Hodal, Palwal, Sohna, Nuh & Tauru	Not yet awarded	Open technology
13	Farukhnagar	3	Farukh Nagar, Haily Mandi & Pataudi	Not yet awarded	Open technology

(Source: Information furnished by DULB)



### Appendix 3.1

(Reference: Paragraph 3.1.1; Page 56)

#### Agencies involved in procurement of wheat and their main functions

**Food, Civil Supplies & Consumer Affairs Department (FSD):-** Additional Chief Secretary, Government of Haryana, FSD is the administrative head at Government level and is responsible for policy decisions, programmes and schemes *etc.* The Director, FSD is responsible for issuing RMS policy and directions to State Procurement Agencies (SPAs) for overall management of procurement, storage and delivery operations. At district level, District Food Civil Supply & Consumer Affairs Controllers (DFSCs) are responsible for the procurement of foodgrains, its storage and final delivery to FCI. In addition to procurement functions, the DFSCs are also responsible for overall supervision of all the SPAs at the district level. In addition to the above, the FSD also make procures wheat and had procured 29.70 *per cent* of total wheat procured in the State during 2017-22.

**Haryana State Co-operative Supply and Marketing Federation Limited (HAFED):** HAFED is an apex co-operative federation established under Co-operative Societies Act, 1984 and acts as an agency for procurement of foodgrains. HAFED had procured 40.34 *per cent* of the total wheat procured in the State during 2017-22. It has seventeen field circles offices each headed by a District Manager (DM). DMs are responsible for the procurement of wheat, its storage and final delivery to FCI.

**Haryana State Warehousing Corporation (HSWC):-** The HSWC was established with the objective to construct and maintain godowns and warehouses for storage of foodgrains, fertilizers, seeds, etc. The HSWC also acts as an agency for procurement of foodgrains. The HSWC had procured 17.66 *per cent* of the total wheat procured during 2017-22. The HSWC has ten field circle offices each headed by a DM responsible for the procurement of wheat, its storage and final delivery to FCI.

**Haryana Agro Industries Corporation Limited (HAIC):-** HAIC provides diversified services in the agro based industry in the State including manufacturing and trading of agricultural equipment, pesticides, fertilizers, cattle feed, seeds, etc and was a procurement agency for foodgrains at MSP. The HAIC has discontinued procurement operations since 2018.

**Agriculture and Farmers' Welfare Department (A&FWD):** - This Department is the executive agency for Web portal "*Meri Fasal Mera Byora*" wherein each farmer is required to submit details of land under wheat cultivation and other details.

**Haryana State Agricultural Marketing Board (HSAMB)** is responsible for *mandi* arrangements before start of the procurement season and providing basic amenities to farmers in the *mandis* during procurement season.

## Appendix 3.2

(Reference: Paragraph 3.4.4; Page 64)

## Statement showing excess expenditure on wheat stored in mandi premises after weighment done outside mandi

RMS	Contractor name	Cartage of wheat bags from/to	Bags (in Nos.)	Distance (In Kms)	Rates paid (₹ per bag)	Amount Paid (in ₹)	Rates for minimum distance per bag (1 km)	Excess expenditure (in ₹)
2017-18	Jagdish Yadav & Company	Samalkha Mandi to MB plinth Samalkha	53,782	5.5	4.84	2,60,305	2.37	1,32,842
2020-21	Chaudhry roadlines	Samalkha Mandi to MB plinth Samalkha	1,41,603	11	10.27	14,53,829	1.79	12,00,793
2020-21	Rathee Transport Co.	Samalkha Mandi to MB plinth Samalkha	1,42,024	11	4.65	6,60,496	0.81	5,45,372
2018-19	Jagdish Yadav & Company	Samalkha Mandi to MB plinth Samalkha	1,26,497	13.6	6.97	8,81,862	1.16	7,34,948
2021-22	Poonam Transport Company	Samalkha Mandi to MB plinth Samalkha	3,20,733	5.3	9.76	31,29,713	4.78	15,97,250
2021-22	Shiva Transport Company	Samalkha Mandi to MB plinth Samalkha	2,16,598	12.9	20.21	43,77,662	3.87	35,39,211
<b>Total Panipat (A)</b>			<b>10,01,237</b>					<b>77,50,416</b>
2018-19	Pandit Road carrier	Sadhura Mandi to MB Godown Sadhura Via Ashutosh Dharam Kanta (D.K.)	64,435	6	8.77	5,65,224	6.95	1,17,272
2018-19	Pandit Road carrier	Sadhura Mandi to Hafed Complex Sadhura Via Ashutosh D.K.	39,692	2.6	6.12	2,42,923	5.3	32,547
2018-19	Maresh Kumar	Chhachrauli Mandi to Open Plinth Chhachrauli Mandi	2,49,668		6.29	15,69,363	4.12	5,41,780
2018-19	Pandit Road carrier	Sadhura Mandi to Mandi shed Sadhura Via Hafed D.K.	35,300	4	6.96	2,45,522	3.48	1,22,844
2018-19	Pandit Road carrier	Sadhura Mandi to Mandi shed Sadhura Via Hafed D.K.	53,996	4	6.96	3,75,558	3.48	1,87,906
2019-20	Suresh Kumar Sharma	Khizrabad Mandi to Open Plinth Khizrabad Mandi	2,06,516	5	10.03	20,72,202	4.42	11,58,555
2019-20	Suresh Kumar Sharma	Khizrabad Mandi to MB Godown Khizrabad Mandi	43,106	5	10.03	4,32,530	4.42	2,41,825
2019-20	Radhey Shyam	Chhachrauli Mandi to Open Plinth Chhachrauli Mandi via Shree Krishna D.K.	1,01,286	1.6	5.83	5,90,365	3.82	2,03,585
2019-20	Radhey Shyam	Chhachrauli Mandi to Open Plinth New Mandi Chhachrauli Mandi via Shree Krishna D.K.	20,043	1.8	5.83	1,16,824	3.82	40,286
2019-20	Suresh Kumar Sharma	Sadhura Mandi to Mandi open plinth Sadhura Via Hafed D.K.	89,609	3.6	7.84	7,02,580	3.92	3,51,267
2019-20	Suresh Kumar Sharma	Sadhura Mandi to Mandi shed Sadhura Via Hafed D.K.	36,999	3.6	7.84	2,90,091	3.92	1,45,036
2019-20	Ramesh Kumar	Mustafabad Mandi to Mustafabad Mandi plinth via Hafed D.K.	3,22,155	3	5.69	18,33,159	3.23	7,92,501
2019-20	The Laxmi Co-op Society	Ranjeeptur Mandi to Ranjееptur Mandi plinth via Kishan D.K.	1,87,574	1.7	5.51	10,32,686	3.8	3,20,752
2019-20	Suresh Kumar Sharma	Sadhura Mandi to Mandi plinth Sadhura Via Hafed D.K.	13,260	3.6	7.84	1,03,965	3.92	51,979
2019-20	Suresh Kumar Sharma	Sadhura Mandi to Mandi shed Sadhura Via Hafed D.K.	18,081	3.6	7.84	1,41,765	3.92	70,878
2019-20	The Laxmi Co-op Society	Bilaspur Mandi to Bilaspur Mandi plinth via Aggrawal D.K.	57,248	1.7	5.51	3,15,162	3.61	1,08,771
2020-21	Rana Transport Co	Ranjееptur Mandi to Ranjееptur Mandi plinth via Kishan D.K.	1,30,648	1.7	5.17	6,75,123	3.39	2,32,553
2020-21	Radhey Shyam	Radaur Mandi to Open plinth Radaur Mandi	2,11,558	1.7	4.93	10,43,150	3.23	3,59,649
2020-21	Maresh Kumar	Chhachrauli Mandi to Open Plinth Chhachrauli Mandi via Shree Krishna D.K.	99,401	1.6	4.86	4,83,486	3.19	1,66,000

RMS	Contractor name	Cartage of wheat bags from/to	Bags (in Nos.)	Distance (In Kms)	Rates paid (₹ per bag)	Amount Paid (in ₹)	Rates for minimum distance per bag (1 km)	Excess expenditure (in ₹)
2020-21	Suresh Kumar Sharma	Sadhura Mandi to Mandi plinth Sadhura Via Hafed D.K.	24,320	3.7	5.74	1,39,594	2.87	69,798
2020-21	Suresh Kumar Sharma	Sadhura Mandi to Mandi shed Sadhura Via Hafed D.K.	17,219	3.6	5.74	98,835	2.87	49,419
2020-21	Suresh Kumar Sharma	Pratap nagar Mandi to Mandi Godown Pratap Nagar via Bains D.K.	34,246	5	7.86	2,69,115	3.46	1,50,682
2020-21	Suresh Kumar Sharma	Pratap nagar Mandi to Mandi plinth Pratap Nagar via Bains D.K.	76,601	5	7.86	6,01,954	3.46	3,37,044
2020-21	Radhey Shyam	Saraswati Nagar Mandi to Mandi open plinth Saraswati Nagar Mandi	1,65,410	2.9	5.45	9,01,087	3.09	3,90,368
2020-21	Mahesh Kumar	Kharwan Mandi to Open Plinth Kharwan Mandi	37,023	5.8	8.05	2,97,887	3.19	1,79,932
2021-22	Mohinder Pal	Radaur Mandi to Open plinth Radaur Mandi	57,091	1.7	6.76	3,85,650	4.43	1,33,022
2021-22	Mohinder Pal	Radaur Mandi to Open plinth Radaur Mandi	54,357	1.7	6.76	3,67,182	4.43	1,26,652
2021-22	Mohinder Pal	Radaur Mandi to MB Godown Radaur Mandi	17,777	1.7	6.76	1,20,084	4.43	41,420
<b>Total Yamunanagar (B)</b>			<b>24,64,619</b>					<b>67,24,323</b>
2017-18	Ram Murti Ravi Kumar	Ambala City	2,44,529	3.3	6.27	15,34,298	2.66	8,82,750
2017-18	Jagjevan Pal Singh	Ambala Cantt.	85,392	4.1	10.81	9,22,977	4.52	5,37,116
2018-19	Rajan & Brother	Ambala City	6,64,353	3.2	6.83	45,36,268	2.9	26,10,907
2018-19	Baldev Singh	Ambala Cantt.	2,37,019	4.1	10.41	24,67,557	4.35	14,36,335
2019-20	Baldev Singh	Ambala City	7,79,344	3.3	8	62,38,259	3.39	35,92,776
2019-20	Jagjevan Pal Singh	Ambala Cantt.	2,85,195	4.1	13.08	37,28,925	5.48	21,67,482
2020-21	Jagjevan Pal Singh	Ambala Cantt.	2,26,346	4.1	13.08	29,59,474	5.48	17,20,230
2021-22	Baldev Singh	Ambala City	2,95,227	3.3	11.2	33,08,018	4.75	19,04,214
<b>Total Ambala (C)</b>			<b>28,17,405</b>					<b>1,48,51,809</b>
<b>Grand Total (A+B+C)</b>			<b>62,83,261</b>					<b>2,93,26,548</b>

**Appendix 3.3**  
**(Reference: Paragraph 3.5.1.1; Page 68)**  
**Statement showing difference between Auction rates of damaged wheat amongst SPAs (FSD, HAFED & HSWC)**

Crop year	Category of wheat	Quantity allotted (In MT)	FSD rates	Quantity lifted (in MT)	HSWC minimum rates (Per MT)	HAFED minimum rates (₹ per MT)	Realisation by FSD	Realisation By HSWC	Realisation by HAFED	Difference of HSWC & FSD	Difference of HAFED & FSD
									(₹ in lakh)		
2019-20	Feed-I	8,579	12,910	7,220	17,370	13,494	932.11	1,254.11	974.28	322	42.17
2018-19	Feed-I	244	12,000	156	17,370	13,494	18.75	27.1	21.09	8.35	2.33
2019-20	Feed-I	5,843	13,000	5,465	17,370	13,494	710.45	949.27	737.45	238.82	27.00
2019-20	Feed-II	6,169	10,810	4,982	14,370	12,660	538.60	715.91	630.77	177.31	92.17
2018-19	Feed-II	205	10,150	102	14,370	12,660	10.36	14.66	12.92	4.3	2.56
2019-20	Feed-II	8,115	10,810	6,644	14,370	12,660	718.17	954.74	841.08	236.57	122.91
2019-20	Feed-II	2,912	8,691	3,871	14,390	14,190	336.45	557.04	549.33	220.59	212.88
2019-20	Feed-III	5,629	8,691	3,055	8,500	14,190	265.51	259.68	433.50	0	167.99
2018-19	Feed-III	449	8,121	203	8,500	14,190	16.48	17.26	28.79	0.78	12.31
2019-20	Ind. use	1,052	5,731	2,234	11,900	10,160	128.04	265.85	226.99	137.81	98.95
2019-20	Ind. use	1,950	5,731	0	11,900	10,160	0.00	0	0.00	0	0.00
2018-19	Ind. use	113	5,401	60	11,900	10,160	3.25	7.14	6.11	3.89	2.86
2019-20	Manure	296	2,110	571	6,300	11,130	12.05	35.97	63.56	23.92	51.51
2019-20	Manure	2,276	2,110	1,049	6,300	11,130	22.14	66.09	116.80	43.95	94.66
<b>Total</b>		<b>43,834</b>		<b>35,613</b>			<b>3,712.36</b>	<b>4,854.06</b>	<b>4,642.67</b>	<b>1,418.29</b>	<b>930.30</b>

## Appendix 3.4

(Reference: Paragraph 3.6.1; Page 71)

## Brief description of incidentals and method of fixation

Incidentals	Brief description	Method of fixation
MSP	Minimum Support Price to be paid to the farmers	MSP is decided by GoI each year before crop sowing season on the basis of recommendations of Commission of Agricultural Costs and Prices (CACP).
Statutory taxes	GoH levy different taxes and cess like Market Fee, Rural Development Fee	Tax rates are notified by GoH as a percentage of sale price i.e. MSP in case of wheat.
<i>Arthiya</i> Commission/ Dami charges	<i>Arthiyas</i> function as immediate intermediaries and aggregators in the process of procurement for which they charge their commission	Charges were fixed as 2.50 per cent of MSP upto RMS 2019 and fixed as ₹ 46 per quintal from RMS 2020 onwards by GoI.
<i>Mandi</i> Labour Charges	Charges incurred in the <i>mandi</i> for engaging the labour to perform various activities like cleaning, weighing, stitching, etc.	Charges are fixed by GoH under the Agricultural Produce Market Committee Act.
Transportation and handling charges	Charges incurred for transportation and handling	Charges are fixed by State level committee headed by ACS, GoH, FSD
Storage charges	To compensate expenditure incurred by SPA for custody and maintenance of wheat stock during procurement period.	Charges are provided separately for CAP & covered storage at Central Warehousing Corporation (CWC) rates for the storage period
Carryover charges (interest charges and storage charges)	To compensate expenditure incurred by SPA for custody and maintenance of wheat stock after procurement period till its delivery to FCI.	Interest charges were allowed on MSP, statutory charges, <i>mandi</i> labour charges, transportation charges, etc., at the rates given in the PCS of respective year and storage charges at rates of central warehousing corporation (CWC).

**Appendix 4.1**  
**(Reference: Paragraph 4.9.1; Page 86)**  
**Non-registration of establishments of 60 construction sites in selected 12 Divisions**

Sr. No.	Name of work	Administratively approved cost	Tendered Cost	Expenditure incurred upto February 2023 (in lakh)	Cess deducted	Cess transferred to the Board
<b>1. Electrical Division, B&amp;R, Gurugram</b>						
1	Construction of Judicial Complex (Tower of Justice) at Gurugram (Providing Heating, Ventilation and Air Conditioning (HVAC) System only)	13,352.00	784.99	865.55	8.66	0.00
2	Construction of Distt Head Quarter office building Excise & Taxation Gurugram (Providing HVAC System only)	5,748.52	435.72	413.82	4.14	0.00
3	Construction of Distt Head Quarter office building Excise & Taxation Gurugram (Providing LAN, EPBAX & CCTV)	5,748.42	448.59	446.71	2.39	0.00
4	Construction of Judicial Complex (Tower of Justice) at Gurugram (Providing Parking Management system & RFID Vehicle Access Automatic Bollard only)	13,352.00	177.67	142.14	1.42	0.00
5	Upkeepment Electrical Hazard (EH) in under Electrostatic Discharge (ESD) Gurugram	-	-	184.45	0.00	0.00
<b>2. Electrical Division, B&amp;R, Karnal</b>						
6	Supply, Erection, Testing, and Commissioning of liquid oxygen tank central medical gas pipeline system and 1 No. Super speciality Operation Theatre 200 bedded Hospital Panipat	1,436.58	497.97	712.85	7.13	7.13
7	Four Lanning Kamal Kaithal Khanauri road (SH-08) Km 17.10 to 69.400 except 54.400 to 57.400 (section Chirao Mor to Kaithal making 2 lane to 4 lane) in the State of Haryana (Shifting of High Tension & Low Tension (HT&LT) lines under the Jurisdiction of Provl. Division No.1, Karnal)	3,934.00	516.62	509.37	5.09	5.09
8	Construction of 6 Lanning of Kamal Meerut Road up to Sugar Mill RD 0 to 2800 and 4 Lanning from Sugar Mill RD 2800 to 14670 i.e up to Haryana- UP Border in District Karnal (Hon'ble Chief Minister announcement code 20093) (Providing shifting of 11 KV, HT & LT line)	10,549.00	518.52	621.42	6.22	6.22
9	Construction of 500 bedded Temporary COVID Hospital Distt. Panipat (Providing 250 KVA transformer, Feeder electrical services, Fire suspension system, consultancy and supply of materials at site) Labour charges	5,777.40	6.73	6.73	0.07	0.07
10	Four Lanning Kamal Kaithal Khanauri road (SH-08) Km 17.10 to 69.400 except 54.400 to 57.400 (section Chirao Mor to Kaithal making lane to 4 lane) in the State of Haryana (Shifting of HT & LT lines under the Jurisdiction of Provincial Division No.1, Kaithal)	3,934.00	144.45	277.39	2.77	2.77
<b>3. Public Health Engineering Department (PHED) Division No 2, Panipat</b>						
11	Detailed Project Report for providing sewerage system in village Sewah District Panipat	1,063.15	1,017.90	900.00	9.00	9.00
12	Providing Sewerage System in village Bapoli District Panipat	1,099.30	728.25	489.16	4.89	4.89
13	Dadlana Village-Providing Sewerage System	644.16	429.48	388.49	3.88	3.88



Sr. No.	Name of work	Administratively approved cost	Tendered Cost	Expenditure incurred upto February 2023 (in lakh)	Cess deducted	Cess transferred to the Board
14	Providing Sewerage System in village Rana Majra District Panipat.	687.25	516.81	278.56	2.79	2.79
15	Augmentation of Water Supply Scheme for Village Chulkana District. Panipat	979.35	836.85	97.27	0.97	0.97
<b>4.</b>	<b>Provincial Division No 1, Buildings &amp; Roads (B&amp;R), Gurugram</b>					
16	Rough Cost estimate for the Construction of New Judicial Complex at Gurgaon (Justice of tower) (MIS No. C05/2014/23045)	13,352.00	7,886.78	9,312.76	95.57	95.57
17	District revenue officer-cum-Land Acquisition Collector, Gurugram for purchase of land measuring 32 kanal 04 marla belonging to Haryana Vidyut Prasaran Nigam Limited Sohna	805.00	0.00	805.00	0.00	0.00
18	Construction of Elevated walkway and Surface Road at Mahavir Chowk (Opposite Police Line) in Gurugram, Haryana (MIS No C05/2020/42673)	5,600.00	2,591.88	1,739.10	17.70	17.70
19	Construction of Houses / Flats for officers / official in Gurugram District. (including Electrical Installation Works) (MIS No. C05/2019/39011)	2,304.00	1,867.80	2,011.41	18.68	18.68
20	Construction of 56 Nos Multi storey Government House /flats for the residence of Judicial officer posted in Gurgaon Sector-52A & 53 in Gurgaon District (MIS No.C05/2016/28290)	4,692.00	2,658.41	3,868.95	29.31	29.31
<b>5.</b>	<b>Provincial Division 1 (B&amp;R), Hisar</b>					
21	Construction of Southern peripheral road along with balsam and LEX	4,923.00	3,221.00	5,416.73	42.95	42.95
22	Maintenance of road for three years by way of pothole filling & patchwork repair by jet patcher/Dura patcher machines of Public Works Department (B&R) HSAMB. Urban LB HUDA & HSIIDC # 37894 (Jet Patcher)	3,682.21	9,816.00	3,911.79	24.17	24.17
23	Construction of Road Over Bridge at Level Crossing (ROBLC) -B on Hisar Mangali Sharwa Road MS #40548	4,781.78	2,312.00	4,590.88	20.91	20.91
24	Construction of ROB LC 89-60 on Rawari Bhatinda Railway line # 28836	5,966.00	4,727.00	4,947.80	7.57	7.57
25	Construction of 2-Lane ROB at LC 4 on Hisar Sadalpur Railway Line Km. 3/7- 8 xing Southern Periphery Road along Balsam and distributary MIS No. 28835	3,069.00	1,681.00	2,772.68	17.37	17.37
<b>6.</b>	<b>Provincial Division No 2, Buildings &amp; Roads, Karnal</b>					
26	C03/2021/44363 Strengthening of road from Panipat to Munak road via Indian Oil Corporation Limited in Karnal District	1,383.76	1,242.25	1,376.38	1.96	1.96
27	C03/2019/37743 Four Lanning of Road from Gharanda to Phurlak Km. 0.00 to 4.00 (Road ID 7495) in Karnal District (Chief Minister Announcement Code 22901)	932.45	752.51	955.20	7.73	7.73
28	C03/2021/44183 Construction of New Road from Kutail to Pandit Deen Dayal Upadhyaya Health Science University upto Ucha Samana Ganjo Garhi road in Karnal District (Back side of University Gate Km. 0.00 to 3.05)	1,322.25	401.14	643.20	5.89	5.89
29	C03/2019/38906 Upgradation of 50 Bedded Hospital at Nilokheri in Karnal District (Chief Minister Announcement Code 19966)	1,783.98	677.23	749.76	7.63	7.63

Sr. No.	Name of work	Administratively approved cost	Tendered Cost	Expenditure incurred upto February 2023 (in lakh)	Cess deducted	Cess transferred to the Board
30	C03/2021/46364 Construction of Box Type Bridge on New Road from Kutail to Pandit Deen Dayal Upadhyay Health Science University upto Ucha Samana Ganjo Garhi road in Karnal District (Eastern Side) Km. 0.00 to 3.05	1,322.25	682.46	371.42	5.16	0.00
7.	<b>Provincial Division, Public Works Department Buildings &amp; Roads, Panipat</b>					
31	Construction of High Level Bridge on Yamuna River connecting Bilaspur to Khojkipur of District Panipat including guide bund and improvement & construction of 15.387 km. road in Haryana. Job No. CRF-HR-2016-17-130.	8,708.00	8,436.01	6,786.22	67.86	67.18
32	Construction of 500 Oxygenated bedded temporary hospital at Panipat	2,888.70	2,435.00	2,438.25	24.38	24.14
33	Construction of Road Over Bridge/Road Under Bridge at Level Crossing no. 47 on Jind Panipat (Delhi-Ambala) line at Railway Km. 62/6-7 on Assan More Majra Goli Road in Panipat District.	2,981.51	1,632.82	1,451.29	14.51	14.37
34	Construction of road at Drain No. 2 from Barsat Road to Sanoli road (SH-16) in Panipat District.	4,885.88	2,157.12	2,383.39	23.83	23.60
35	4 lanning Panipat (Grand Trunk Road National Highway - 44) Dahar up to National Highway-709 (Section Grand Trunk Road upto Canal) (Carrier lined channel) (Road ID 9962) (Hon'ble Chief Minister Announcement No. 22985 dated 28.08.2018) in Panipat District	1,755.80	1,337.39	1,131.64	11.32	11.20
8.	<b>Provincial Division No 3, Buildings &amp; Roads, Hisar</b>					
36	Construction of integrated complex, special home, place of safety and children home at village Beed Hisar	3,434.76	2,330.94	2,418.47	23.63	23.39
37	Construction of Road Over Bridge at Level Crossing-88 at KM 134/4-5 on south run periphery road along Balsam and Distributary Hisar	4,361.26	3,010.30	1,246.93	12.38	12.26
38	Special repair of Civil Hospital at Hisar.	269.59	181.45	217.03	2.17	2.15
39	Construction of Burjs and Bar Bed Wire Fencing for land at Airport Hisar.	247.66	211.24	200.62	1.97	1.95
40	Establishment of Modern Revenue record Room in Mini Secretariat at Hisar	40.87	17.19	15.58	0.15	0.15
9.	<b>Water Service Division, Irrigation, Faridabad</b>					
41	Constructing of 04. No. bridges on left side of Agra Canal at X-ing point of Buriya Nailah at km 13.000 & Mawai escape at km 14.960 & Faridabad drain at km 14.590 & Chhainsa Minor at km 15.290.	1,692.03	1,692.03	1,692.03	0.00	0.00
42	Reconstruction of 6 Lane Single span Bridge at RD 4115 of Gurgaon Canal Connecting Sector 6,7,8, to Sector 3 & 4 Ballabhgarh City	700.00	764.56	731.06	7.24	7.24
43	Reconstruction of VR Bridge at RD 24177 of Gurgaon Canal	-	135.18	116.59	1.15	1.15
44	Reconstruction of VR Bridge at R.D. 39800 on Gurgaon Canal	164.78	128.21	117.79	1.14	1.14
45	Restoration of internal section of Agra canal from km. 4.350 to 7.100 By UP Irrigation	143.21	143.21	143.21	0.00	0.00
10.	<b>Provincial Division (B&amp;R), Faridabad</b>					
46	Rough cost estimate for Procurement of Land (Phase-II) for widening of existing road and Construction of Bye pass and approaches to Yamuna bridge on Faridabad lassana Chirsi Manjhawali road in Faridabad District	601.29	-	294.62	0.00	0.00



Sr. No.	Name of work	Administratively approved cost	Tendered Cost	Expenditure incurred upto February 2023 (in lakh)	Cess deducted	Cess transferred to the Board
47	Construction of New Building of Government College (Pandit Jawahar Lal Nehru) Sector-16A, Faridabad Phase-1 (MIS/CO5/2019/39031)	4,643.85	2,575.54	3,396.26	32.55	32.55
48	Construction of 30 Nos. Multi-storied Judicial Houses in Sector-8, Faridabad (MIS. No/COS/2019/38500)	2,218.72	1,197.34	1,708.62	14.26	14.26
49	Special repair of Government Medical College at Chhainsa for establishment of covid-19	940.74	380.10	1,299.25	8.31	8.31
50	Construction of Observation Home in National Institute of Technology, Faridabad	1,044.51	782.52	1,843.38	16.94	16.94
<b>11.</b>	<b>Provincial Division (B&amp;R), Narwana, Jind</b>					
51	Special repair widening strengthening. of road from Baroda to Naguran	2,229.30	1,441.10	1,786.68	17.87	17.87
52	Construction of Sub Divisional Officer (Civil) Complex at Kalayat	1,777.58	857.27	1,262.63	12.63	12.63
53	Construction of Road Over Bridge on Narwana Samain road	2,500.00	1,259.55	1,160.25	11.60	11.60
54	Special repair by Providing widening strengthening on Alewa to Rajound road	784.22	760.64	846.13	8.46	8.46
55	Special repair by Providing widening strengthening on Narwana Tohana road	1,132.29	769.28	576.92	5.77	5.77
<b>12.</b>	<b>Water Service Division, Irrigation, Saffidon, Jind</b>					
56	Rehabilitation of Hansi Branch from RD 30000 to 45000 by providing concrete lining including remodelling of structure	5,712.00	2,182.63	2,231.33	21.46	21.46
57	Rehabilitation of Hansi Branch from R.D 45000 to 58310 by Providing Concrete lining Including Remodelling of Structure		1,797.10	2,405.04	18.37	18.37
58	Rehabilitation of Hansi branch from RD 15000 to 30000 by providing concrete lining including remodelling of structure under head the National Bank for Agriculture and Rural Development's (NABARD) Rural Infrastructure Development Fund (RIDF) XXVI	5,642.00	2,289.62	2,225.98	22.42	22.42
59	Rehabilitation of Hansi branch from RD 0 to 15000 by providing concrete lining including remodelling of structure under head the National Bank for Agriculture and Rural Development's (NABARD) Rural Infrastructure Development Fund (RIDF) XXVI		1,912.73	1,666.12	16.49	16.49
60	Estimate for providing brick side lining from RD 0 to 8950 including reconstruction of 3 Nos. bridges at RD 2076, RD 4010, RD 6500 Padana Drain	720.00	612.10	637.52	6.31	6.31
	<b>Total</b>	<b>1,86,445.36</b>	<b>91,008.18</b>	<b>94,237.80</b>	<b>767.19</b>	<b>743.61</b>

## Appendix 4.2

(Reference: Paragraph 4.14; Page 100)

## List of accident sites selected for scrutiny

Name of District	Sr. No.	Name of establishment	No. of deceased worker
Faridabad	1	M/s Pebble Downtown Private Limited	1
	2	M/s Asian Fidelis Private Limited	1
	3	M/s G.D Buildtech Private Limited C/o M/s Mata Amrita Institute of Medical Sciences & Research Centre	1
	4	M/s B L Kashyap & Son Limited	2
Gurugram	5	M/s Al Abbar Metal & Glass Private Limited C/o IREO Mixed used land Project	2
	6	M/s Ahluwalia Contracts (India) Limited C/o M/s Advance India Projects Limited (AIPL) Joy Central Project.	2
	7	M/s EMAAR India Limited Project Palm Hills	4
	8	M/s Citra Properties Limited	2
Hisar	9	Construction Site of M/s Shree Shyam Snacks Food Private Limited	4
	10	GSSS Girls School, Pabra*	2
Jind	11	Residential work*	1
	12	Residential work*	1
Karnal	13	M/s Kunal construction Company C/o Construction of S.E. Office, Madhuban, Karnal	0
	14	M/s Garg and Company C/o Construction of Government College Building, Asandh, Karnal	1
	15	M/s B.S. Construction Company- Community Health Centre (CHC) Nilokheri	1
Panipat	16	M/s HR Commercial Private Limited (Thermal Power Panipat)	1
	17	<i>(Accident occurred two times)</i>	1
	18	M/s WG construction, Panipat in February 2021	1
	19	M/s Om Enterprises, Mehrana	1
<b>Total</b>			<b>29</b>

\* Works not covered in the Act

**Appendix 4.3**  
**(Reference: Paragraph 4.15; Page 103)**  
**Joint inspection of sampled selected registered/unregistered/accidental establishments**

Sr. No.	Name of establishment	District	Date of completion of work	Date of inspection by Board, if any	Date of joint inspection	Whether on going work/ completed work
<b>Registered establishments</b>						
1	M/s B L Kashyap & Sons Limited C/o M/s IREO Grace Realtech Private Limited	Gurugram	31 March 2023	NA	21 February 2023	Completed
2	M/s Simplex Infrastructure Limited C/o Puri "Emerald-Bay" Housing Project, Sector 104, Gurugram	Gurugram	30 April 2020	NA	23 February 2023	Completed
3	M/s Heritage Max Realtech Private Limited Project Elevate	Gurugram	31 December 2023	NA	21 February 2023	On going work
4	M/s Instakart Services Private Limited	Gurugram	31 March 2024	06 January 2022	23 February 2023	On going work
5	M/s Nestle India Limited unit I & II	Panipat	30 June 2019	No	26 October 2022	Completed
6	M/s Emperium Realty Private Limited, Emperium Happy homes, Virat Nagar bypass road, Sector-1A, Panipat	Panipat	12 February 2022	10 February 2021	19 October 2022	Completed
7	M/s WG construction C/O Indraprastha G.E & R.F	Panipat	31 March 2023	No	27 October 2022	On going work
8	M/s ELDECO Estate One (A unit of ELDECO Infrastructure & Properties Limited)	Panipat	17 July 2022	No	16 November 2022	Completed
9	Civil work for supply of material testing and commissioning of 01 no. 33 KV sub-station Anchrakalan, Jind	Jind	10 October 2021	No	30 January 2023	Completed
10	M/s Oriental Sales Corporation C/o Dakshin Haryana Bijli Vitran Nigam Limited (DHBVNL)	Jind	3 October 2022	No	31 January 2023	Completed
11	Contract Civil Works 33 KVS/Station	Jind	31 December 2022	No	30 January 2023	Completed
12	M/s L&T Construction C/o Government Medical College	Jind	30 September 2023	No	24 January 2023	On-going work
13	M/s LC Infra Project Private Limited	Hisar	06 March 2021	29 May 2019	05 January 2023	Completed
14	Construction Site of Maintenance Yard C/o M/s The E5 Company	Hisar	31 December 2020	30 September 2020	04 January 2023	Completed
15	Contract for Civil work for Supply of Material Erection Testing and Commissioning of 01 no. 33 KV to MNC Electrical Private Limited C/o DHBVNL	Hisar	31 December 2022	No	10 January 2023	Completed
16	M/s VLCOM Healthcare Private Limited	Hisar	31 October 2024 (Due)	No	28 December 2022 and 03 January 2023	On-going work
17	M/s Rose Building Solutions Private Limited Karnal	Karnal	31 March 2021	25 June 2019 (Before registration) & 22 January 2021	14 March 2023	Completed
18	M/s Maa Vaishno Net Tech Private Limited, Karnal	Karnal	30 September 2021	No inspection report produced	06 March 2023	Completed
19	M/s Fantabulous Town Developers Private Limited, Karnal	Karnal	30 September 2024	No inspection report produced	06 March 2023	Ongoing work
20	M/s AEGIS VALUE HOMES Limited, Karnal	Karnal	30 June 2023	Yes on 29 July 2021	15 March 2023	Ongoing work
21	M/s G.D Buildtech Private Limited C/o M/s Mata Amrita Institute of Medical Sciences & Research Centre	Faridabad	15 July 2022	No	11 April 2023	Completed
22	M/s Larsen & Toubro Limited -Construction	Faridabad	28 February 2023	No	20 April 2023	Completed
23	M/s Mata Amrita Institute of medical Sciences & Research Centre	Faridabad	31 March 2021	No	11 April 2023	Completed

Sr. No.	Name of establishment	District	Date of completion of work	Date of inspection by Board, if any	Date of joint inspection	Whether on going work/ completed work
<b>Unregistered establishments</b>						
24	M/s AARVY Health Care Private Limited	Gurugram	30 June 2019	12 August 2019	04 January 2023	Completed
25	M/s Raheja Navodya	Gurugram	NA	No	04 January 2023	Completed
26	Chander Kanta	Gurugram	NA	No	04 January 2023	Completed
27	The Ram Shanti Cooperative Group Housing Society (CGHS) Limited	Gurugram	August 2013	No	04 January 2023	Completed
28	M/s Grasim Industries Limited, Birla Paint Division	Panipat	31 July 2024	No	16 November 2022	Ongoing work
29	M/s Ram Kumar S/o Krishan Chand	Panipat	NA	No	22 November 2022	Ongoing work
30	Gobind Ram, M/s RKGCOY Yarns, Private Limited	Panipat	NA	No	24 November 2022	Ongoing work
31	Sant Nirankari Mandal	Panipat	NA	No	27 October 2022	Completed
32	Surender Daksh Photostate opposite SP Office Mini Secretariat Jind	Jind	June 2022	No	27 January 2023	Completed
33	Deepak Kumar Contractor Work of railway under Bridge on Jind Panipat Line, Jind	Jind	NA	No	25 January 2023	Completed
34	Sumil Jindal Sh. Sanatan Dharm Ramliya Primary School, Jind	Jind	June 2022	No	25 January 2023	Completed
35	Surender Kumar Sector 26 A Green City Safidon Road, Jind	Jind	10 April 2022	No	27 January 2023	Completed
36	M/s HKSD Sarvodya Health Care, Hisar	Hisar	31 December 2023	11 February 2021	06 January 2023	Ongoing work
37	M/s RVS Hotels and Resorts Private Limited, Hisar	Hisar	NA	No	28 December 2022 and 02 January 2023	Ongoing work
38	Rajbir Singh, Plot no. 2047, Sector 16-17, Near Main Road, Hisar	Hisar	NA	NA	03 January 2023	Site was a residential site and the owner of the house refused entry
39	Partap Jain, 70 Professor Colony, Opposite Hanuman Mandir, Hisar	Hisar	NA	NA	03 January 2023 and 06 January 2023	Team visited the site twice but no person was found at the site
40	RDC India Projects, Signature Global City, Karnal	Karnal	NA	No	15 March 2023	Ongoing work
41	M/s Parsav Nath Developers, Sector 35 Karnal	Karnal	NA	No	21 March 2023	Completed
42	M/s NKG Infra Structure Limited, Kutail, Karnal	Karnal	NA	No	14 March 2023	Ongoing work
43	Kalpna Chawala Government Medical College & Hospital Karnal (JMCP Limited), Karnal	Karnal	NA	No	11 April 2023	Completed
44	M/s. Habitat residence, Sector 78, Village Faridpur	Faridabad	31 December 2023	No	10 April 2023	Ongoing work
45	Sector 86, Greater Faridabad, Adore Chowk, Bhudena	Faridabad	NA	No	10 April 2023	Ongoing work
46	World street commercial colony under mix land use policy sector 79	Faridabad	NA	No	12 April 2023	Ongoing work
<b>Accidental establishments</b>						
47	M/s Ahluwalia Contracts (India) Limited. C/O AIPL Joy Central Sector-65, Gurugram	Gurugram	31 December 2022	Accidental enquiry on 10 June 2022, 20 June 2022, 30 June 2022 and 08 July 2022	24 February 2023	Ongoing work
48	M/s Emaar Palm Hills, Sector-77, Gurugram	Gurugram	31 December 2022	Inspection on 23 February 2013 & 27 June 2019 and Accidental Enquiry on 11 October 2022 and 09 August 2022	23 January 2023	Ongoing work
49	M/s OM Enterprise, VPO Mehrana, District Panipat	Panipat	NA	Accidental enquiry on 12 August 2022	27 October 2022	Prohibited

Sr. No.	Name of establishment	District	Date of completion of work	Date of inspection by Board, if any	Date of joint inspection	Whether on going work/ completed work
50	M/s WG Construction Medical College Building	Panipat	NA	Inspection on 26 June 2019 and 13 January 2020 and accidental enquiry on 12 February 2021	22 September 2022	Completed
51	M/s HR Commercial Private Limited (Panipat Thermal Plant)	Paniapt	NA	Accidental enquiry on 14 January 2021 and 18 January 2021	22 September 2022	Completed
52	Residential House Owner- Sh. Suresh (Narwana)	Jind	NA	Accidental Enquiry on 12 August 2021	31 January 2023	Completed
53	Residential House Owner- Sh. Naresh	Jind	NA	Accidental Enquiry on 13 May 2022	31 January 2023	Completed
54	M/s Shree Shyam Snacks Food Private Limited.	Hisar	31 December 2020	Accidental Enquiry on 20 March 2020 and 29 May 2020	10 January 2023	Completed
55	GSSS Girls School, Pabda	Hisar	NA	Accidental enquiry on 18 February 2020	04 January 2023	Completed
56	M/s Kunal construction Company C/o Construction of S.E. Office, Madhuban, Karnal	Karnal	NA	Accidental enquiry on 05 November 2018	21 March 2023	Completed
57	M/s Garg and Company C/o Construction of Government College Building, Asandh, Karnal	Karnal	31 October 2018	Accidental enquiry on 04 January 2019 and 18 January 2019	01 February 2023	Completed
58	BS Construction Company – Community Health Centre (CHC) Nilokheri	Karnal	Work stopped	Accidental enquiry on 07 April 2021 and 09 April 2021	17 March 2023	Prohibited
59	M/s. Pebble Downtown India Private Limited	Faridabad	31 March 2021	Accidental Enquiry on 24 December 2019, 31 December 2019, 06 January 2020, 03 March 2020	11 April 2023	Completed
60	M/s G.D Buildtech Private Limited C/o M/s Mata Amrita Institute of Medical Sciences & Research Centre	Faridabad	15 July 2022	Accidental Enquiry on 31 January 2020, 02 February 2020, 15 February 2020, 03 March 2020	11 April 2023	Completed

## Appendix 4.4

(Reference: Paragraph 4.16; Page 105)

**District-wise details on the number of beneficiaries/ benefits disbursed on welfare schemes**

Name of District	Establishments registered <sup>1</sup>	District wise number of beneficiaries	Number of benefits disbursed	Amount disbursed (₹ in crore)
Gurugram	2,786	3,408	8,814	9.94
Faridabad	433	1,151	1,975	4.36
Jhajjar	202	1,406	3,191	4.96
Rewari	151	4,257	12,114	19.04
Palwal	109	2,011	3,875	6.61
Sonipat	60	3,689	10,002	19.40
Rohtak	52	3,015	6,703	16.36
Hisar	42	49,148	1,68,004	243.52
Mewat	36	23,664	76,010	78.15
Panipat	31	12,938	37,308	51.26
Karnal	26	3,795	8,118	24.04
Kurukshetra	25	662	1,197	5.65
Panchkula	26	303	656	4.18
Sirsa	13	17,882	55,432	61.05
Bhiwani	11	16,954	54,915	91.69
Yamuna Nagar	11	5,824	13,228	38.50
Mahendragarh	10	7,162	19,403	27.82
Ambala	9	6,737	14,725	37.24
Jind	8	27,074	79,879	118.85
Fatehabad	6	13,233	43,113	58.21
Kaithal	5	11,805	28,509	71.08
Charkhi Dadri	1	2,783	9,326	15.65
<b>Grand Total</b>	<b>4,053</b>	<b>2,18,901</b>	<b>6,56,497</b>	<b>1,007.56</b>

Source: Data obtained from the portal of Labour Department (<http://hrylabour.gov.in>)<sup>1</sup> The data of benefits availed in the portal was from 29 January 2018.

**Appendix 4.5**  
**(Reference: Paragraph 4.18.1; Page 110)**

**Survey of registered workers**

Sr. No	Abstract of beneficiary survey Nature of work	No. of workers									Total
		Gurugram	Panipat	Hisar	Faridabad	Karnal	Jind	Total			
1	Total number of workers	96	80	210	86	126	201	799			
2	Non traceable	26	9	21	12	44	76	188			
3	No. of workers surveyed	70	71	189	74	82	125	611			
4	Domicile of Haryana	70	71	189	74	82	125	611			
5	Worked at registered establishment	1	1	0	0	0	0	2			
6	Individual residential house	47	35	185	62	82	123	534			
7	Construction worker (Road, Park, Wall, Bhatta)	3	3	0	0	0	0	6			
8	Death cases in which not responded by family person	5	6	3	11	0	0	25			
9	Agricultural wages (Ineligible)	3	3	0	0	0	2	8			
10	Factory worker (Ineligible)	0	5	0	0	0	0	5			
11	Home maker/ Housewife (Ineligible)	0	4	0	0	0	0	4			
12	Other than construction workers (Ineligible)	6	13	1	0	0	0	20			
13	Not a construction worker from more than one year (Ineligible)	5	1	0	1	0	0	7			

**Appendix 4.6**  
**(Reference: Paragraph 4.18.2; Page 111)**  
**Survey of unregistered workers**

Sr. No	Particulars	Gurugram	Panipat	Hisar	Faridabad	Karnal	Jind	Total
1	Number of work sites jointly inspected	10	11	10	8	11	10	60
2	Number of on-going work sites where survey was conducted out of 21 on-going sites	4	4	3	2	3	1	17
3	Total workers surveyed	<b>28</b>	<b>29</b>	<b>15</b>	<b>24</b>	<b>19</b>	<b>10</b>	<b>125</b>
4	Number of Migrant workers.	28	28	12	23	18	10	119
5	Number of workers engaged in construction work for more than 90 days	23	4	4	23	8	10	72
6	Number of workers not applied for registration	23	3	4	17	8	10	65
7	Number of workers who did not know about the process of registration, Board and its welfare schemes.	28	29	4	17	19	10	107
8	Number of workers who were not provided with temporary living accommodation.	0	0	0	0	11	0	11
9	Canteen facility was not being provided at construction site	25	0	0	0	0	0	25
10	Drinking water facility was not provided at construction site	5	0	0	0	0	0	5



**Appendix 5.1**  
**(Reference: Paragraph 5.2; Page 115)**

**Statement showing department/unit-wise details of test-checked works where enhancement/variation in scope of work was more than 20 per cent**

Sr. No.	Name of Work	Agreement Amount (₹ in crore)	Date of allotment	Time limit in months	Payment made (₹ in crore)	Date of last payment	Enhanced to (₹ in crore)	Percentage of enhancement
<b>Public Works Department (Buildings and Roads) {PWD (B&amp;R)}</b>								
1.	Construction of 4 lane ROB on Delhi Ambala Railway line at LC No. 61 at railway Km 99/21-23 crossing Kond-Munak- Salwan Assandh road (MDR 114) in Karnal District	21.93	31 January 2019	24	37.36	18 October 2024	37.33	70.22
2.	Construction of HL Bridge over Dhanuara Escape in place of vented causeway on Newal Gheer Garhi Birbal Road to Japati Chhapra Via Randoli Road	1.56	01 January 2020	6	4.19	03 September 2021	4.19	168.59
3.	Construction of Girls Hostel, Boys Hostel, Mess Block, Admn/Guest House, Amenities Block, Boundary wall, Road/Parking & Elect works of Building of NCC Academy Gharaunda in Karnal District	17.91	02 July 2018	24	42.17	12 November 2020	42.17	135.46
4.	Construction of 7 feet 6 inch Boundary Wall around Kalpana Chawla Medical University at village Kutail (Karnal)	3.76	15 June 2018	15	36.96	12 July 2020	36.96	882.98
5.	Construction of Govt. College at Jundla in Karnal District	10.85	28 July 2017	21	15.40	24 June 2022	15.40	41.94
6.	Strengthening of road from Panipat Safidon road to Assandh section Khukhrana, Assan Mor Majra Goli road upto district Boundary (RD 0 to 15.240) in Panipat District	2.15	09 December 2019	6	2.82	23 January 2020	2.82	31.16
7.	Up-gradation of Stadium (Construction Stadium, IAAF approved synthetic track, FIFA approved artificial Football Turf) in War Heroes Memorial Stadium at Ambala Cantt	40.49	20 March 2017	24	114.03	22 May 2021	114.03	181.63
8.	Strengthening of link road from Jagadhri Ambala Road to Munnerheri in Ambala District (KM 0.00 to KM 3.040)	1.14	12 September 2019	6	4.53	01 May 2024	4.63	306.14
9.	Construction of Administrative Block in SDO Civil Complex at Ambala Cantt. (Excluding E.I. Works)	15.59	02 June 2019	21	34.52	05 July 2023	34.80	123.22
10.	Construction of all-weather swimming pool in sports complex at Ambala Cantt.	8.29	06 March 2019	18	31.35	09 September 2024	31.38	278.53
11.	Construction of War Memorial at Ambala Cantt in the Honour of Martyrs of the First War of India's Independence 1857	189.41	22 June 2018	24	292.31	11 November 2024	326.56	72.41
12.	Construction of Kabaddi Hall with facilities of Kabaddi Academy in Village Pai in Kaithal District	3.65	13 September 2019	12	5.00	16 July 2021	5.00	36.99
13.	Special Repair of Dhand Pundri Rajound Alewa road (MDR 113) km. 22.10 to 39.96 in Kaithal Distt. (Road ID 6887 & 6918)	2.20	03 August 2019	4	3.55	19 March 2021	3.55	61.36

Sr. No.	Name of Work	Agreement Amount (₹ in crore)	Date of allotment	Time limit in months	Payment made (₹ in crore)	Date of last payment	Enhanced to (₹ in crore)	Percentage of enhancement
14.	Special Repair by providing widening and strengthening of Baroda to Nagura Road in Jind District (ID 6797)	14.41	30 September 2021	12	17.87	16 November 2022	17.87	24.01
15.	Construction of 50 Bedded Hospital at Kalayat in Kaithal District	5.88	01 December 2018	18	7.99	12 September 2021	7.99	35.88
16.	Construction of SDO (C) Complex Building at Kalayat in Kaithal District	8.57	19 September 2019	18	11.03	01 May 2022	12.63	47.37
17.	Construction of Bus stand and Workshop at Pandu Pindara, Jind District	20.00	04 June 2018	24	26.57	09 February 2021	26.57	32.85
18.	Construction of Community Health Centre, Muana, Jind	4.07	30 May 2019	18	7.16	22 July 2021	7.16	75.92
19.	Construction of various buildings of RVDEC i.e. Technical-cum-administrative block, postmortem block and outdoor clinic block at village Keorak in Kaithal District.	4.98	01 November 2019	18	5.83	22 September 2022	13.41	169.28
20.	Construction of New Sports Stadium at Samaspur, Charkhi Dadri	10.85	02 October 2020	18	11.10	06 June 2024	19.77	82.21
21.	Widening and strengthening & CCP on Badhra to Berla Road from km 0.00 to 8.10 (Road ID 2429)	3.20	29 August 2019	9	6.23	30 September 2021	6.23	94.69
22.	Construction of Govt. Sr. Sec. School at Dhigawa Jattan in Bhiwani District	3.62	13 September 2017	15	5.00	17 December 2019	5.00	38.12
23.	Construction of Workshop Block Haryana Roadways at Loharu	2.38	13 June 2017	12	4.16	29 September 2021	4.16	74.79
24.	Construction of a new link road from Barwa to Talwandi from KM 0.00 to 7.00 in Bhiwani district	4.75	28 September 2021	6	6.12	12 August 2021	6.12	28.84
25.	Special repair due to road cut made by Municipal Council, Bhiwani against AMRUT Yojna Project on various roads in Bhiwani city	0.76	29 December 2020	6	1.70	11 February 2021	1.70	123.68
26.	Construction of library and workshop block in the campus of Ch. Bansil Lal Govt. Polytechnic at Bhiwani	5.75	24 March 2017	18	8.04	21 January 2021	8.32	44.70
<b>Total (26)</b>		<b>408.15</b>			<b>742.99</b>		<b>795.75</b>	<b>94.97</b>
<b>Public Health Engineering Department (PHED)</b>								
27.	Augmentation & Repair of structures of W/S scheme Dhabli Kalan	0.47	10 September 2018	6	0.90	11 November 2019	0.90	91.49
28.	Augmentation W/S scheme Sirsa Town "Laying of various sizes of DI pipeline"	1.92	14 August 2019	12	4.12	22 December 2020	4.12	114.58
29.	Augmentation W/S scheme Sirsa Town "Laying of various sizes of DI pipeline"	0.70	11 April 2018	6	1.84	02 May 2019	1.84	162.86
30.	Providing and laying of 250 mm SW pipe sewer due to construction of RUB in Ellenabad town	0.04	20 December 2017	2	0.38	05 July 2019	0.38	850.00
31.	Augmentation W/S scheme to village Masitan	1.06	25 July 2018	12	1.76	24 May 2022	1.81	70.75
32.	Renovation of Water Works Niyana, Distt. Hisar	0.40	30 August 2017	6	0.65	22 October 2019	0.65	62.50
33.	Upgradation & Renovation of water works at village Badchhappar, Distt. Hisar	0.43	16 July 2018	3	0.65	27 June 2022	0.68	58.14

Sr. No.	Name of Work	Agreement Amount (₹ in crore)	Date of allotment	Time limit in months	Payment made (₹ in crore)	Date of last payment	Enhanced to (₹ in crore)	Percentage of enhancement
34.	Renovation of water supply scheme village Singhwa Ragho, Distt. Hisar	0.45	15 May 2018	6	0.99	17 February 2022	1.02	126.67
35.	Providing Independent Canal based WW to village Mehrara, Tehsil Julana, Distt. Jind	1.15	26 October 2018	12	1.77	28 July 2021	2.00	73.91
36.	Augmentation of 11 no. rural W/S schemes (Canal based) covered 15 no. villages in Julana constituency of district Jind "Construction of RCC Pipe inlet channel silt catch pit sump well after commissioning 4 No. WW covering 6 no. Village and all other work contingent thereto"	1.54	27 March 2018	9	2.27	22 November 2021	2.52	63.64
<b>Total (10)</b>		<b>8.16</b>			<b>15.33</b>		<b>15.92</b>	<b>95.10</b>
<b>Irrigation and Water Resources Department (I&amp;WRD)</b>								
37.	Construction of V.R bridge at RD 118500 of chautang Nallah	0.81	04 September 2019	6	1.30	24 September 2021	1.30	60.49
38.	Increasing capacity of WJC(MLL) from reach Rd 81500 to RD 96000	5.48	18 May 2018	9	8.36	06 August 2021	8.36	52.55
39.	Increasing capacity of WJC(MLL) from reach Rd 68220 to RD 81400	4.91	01 June 2018	9	9.27	30 November 2021	9.27	88.80
40.	Separation of village pond from flood & wastewater in idiyana link drain and protection to village abadi in village idyana	0.55	11 September 2019	6	0.82	02 December 2021	0.82	49.09
<b>Total (4)</b>		<b>11.75</b>			<b>19.75</b>		<b>19.75</b>	<b>68.09</b>
<b>Haryana State Agriculture Marketing Board (HSAMB)</b>								
41.	S/R of link road from village Chang to Kharak Kalan in Bawani Khera Constituency.	0.73	29 June 2017	6	2.48	November 2019	2.48	239.73
42.	S/R of L/R in Tosham Constituency G-06 (Work Plan 2020-21)	1.04	15 September 2020	10	2.46	15 February 2022	2.46	136.54
43.	S/R of link roads in Bhiwani Constituency Group-I (Work Plan 2018-19)	1.08	04 September 2018	6	2.48	November 2020	2.48	129.63
44.	S/R of various L/R Safidon constituency G-1	1.88	22 September 2020	10	4.25	March 2022	4.25	126.06
45.	Construction of 3 Nos. Gate with re-construction of Boundary wall and Nallah and repair of service road in NGM at Bhiwani in Bhiwani Constituency.	1.07	27 November 2018	9	2.10	November 2020	2.10	96.26
46.	Widening & Stg. Of L/R bhukhapuri to Budehra	0.49	20 February 2020	6	0.81	24 February 2022	0.81	65.31
47.	S/R of internal road, road and parking area in NGM Julana	3.81	06 August 2019	8	6.33	06 May 2024	6.33	66.14
48.	Widening & Stg. Of L/R from village butana to Sandhir	0.67	03 June 2019	8	0.91	June 2021	0.91	35.82
49.	Const. of Road from Farmana Gohana Road to Farmana Guhna Road in Sonipat	0.81	14 February 2017	6	1.21	June 2021	1.21	49.38
50.	Const. of L/R from village Morkhi to Bhagkhera Shivanamal Road	0.87	18 March 2020	6	1.32	03 January 2025	1.32	51.72
51.	S/R of L/R (1) Katwal to Bali Engineering College (ID-2641) (2) Mahra to Sikandrapur Majra (ID-4959) (3) Ishapur Kheri to Siwana Mall (ID-4950) in Distt. Sonipat G-5	0.96	07 August 2018	10	1.04	04 November 2020	1.41	46.88

Sr. No.	Name of Work	Agreement Amount (₹ in crore)	Date of allotment	Time limit in months	Payment made (₹ in crore)	Date of last payment	Enhanced to (₹ in crore)	Percentage of enhancement
52.	Const. of Shahid Samarak of Late Sh. Pankaj Sangwan in village Kohla in the MC Baroda	0.15	14 February 2020	2	0.24	January 2024	0.24	60.00
53.	S/R of various L/R of Safidon constituency (G-4)	1.58	14 August 2018	6	2.24	July 2021	2.24	41.77
54.	S/R for 3 No L/R in notified area of MC kamal and Taraori (G-2)	2.26	03 August 2018	6	3.01	26 November 2020	3.01	33.19
55.	S/R of various L/R of Narwana Constituency	1.89	14 August 2018	6	2.52	November 2019	2.52	33.33
56.	S/R of 3 no L/R of MC Bhattu Kalan G-A	1.24	19 October 2020	9	1.58	November 2021	1.58	27.42
57.	Const. of L/R plateform in New Grain market Jundla Mandi	7.06	22 June 2018	12	8.53	September 2021	8.53	20.82
58.	Construction of road from Purani Chundipur to Dhakwal Rodan	0.68	05 April 2018	6	0.76	12 November 2020	0.76	11.76
59.	S/R of various L/R of Dabwali constituency in Sirsa G-2	0.80	22 October 2020	4	0.98	April 2022	0.98	22.50
60.	Widening & Stg. Of L/R from village Bastara to NGM Ghraunda	1.03	24 July 2019	8	1.12	02 November 2020	1.12	8.74
<b>Total (20)</b>		<b>30.10</b>			<b>46.37</b>		<b>46.74</b>	<b>55.28</b>
<b>Executive Engineer, Panchayati Raj Division (EE, PRI)</b>								
61.	Construction of Block Office Building Nagpur Distt Fatehabad	1.24	03 November 2017	12	1.58.	16 June 2021	1.58	27.42
62.	Construction of VKC Khereri Rohtak	0.22	11 February 2020	6	0.27	22 December 2021	0.27	22.73
63.	Construction of Ayurvedic Dispensary Ugalan Hisar	0.27	09 October 2019	4	0.32	31 January 2022	0.32	18.52
64.	Construction of VKC at Indergarh (Rohtak)	0.22	19 February 2020	6	0.27	31 December 2021	0.27	22.73
<b>Total (04)</b>		<b>1.95</b>			<b>2.44</b>		<b>2.44</b>	<b>25.13</b>
<b>Haryana Police Housing Corporation (HPHC) *</b>								
65.	Upgradation of 2 <sup>nd</sup> and 3 <sup>rd</sup> floor for CID in Sector 6, Panchkula	0.79	30 March 2018	6	3.19	November 2019	3.19	303.80
66.	Up-gradation of Police Head Quarter Building Sec-6 Panchkula	1.28	03 April 2018	8	3.77	October 2019	3.79	196.09
67.	Construction work of UHBVN Head office	29.64	12 April 2017	36	72.07	August 2023	72.07	143.15
68.	Construction of National Institutes of Fashion Technology (NIFT) at Sector - 23 Panchkula	72.03	15 May 2018	24	97.39	March 2022	97.39	35.21
69.	Extension of administrative block for HAP in Madhuban, District Kamal	1.20	02 May 2017	12	1.60	May 2019	1.60	33.33
70.	Balance work of Police Public School Bhondsi Distt. Gurugram	3.78	01 August 2017	15	4.78	September 2020	4.78	26.46
71.	Special repair 357 Type-II and Type III houses in PTC Sunarian, District Rohtak	1.19	10 January 2018	9	1.50	May 2020	1.50	26.05
72.	Construction of Women Police Station at Ambala.	1.80	03 May 2017	12	2.27	April 2022	2.29	27.22
73.	Construction of State Vigilance Building at Rohtak,	4.02	13 November 2018	15	4.97	August 2021	4.97	23.63
74.	Construction of office building of District Forum Rohtak in District Administration Complex at Rohtak,	1.10	30 August 2018	12	1.34	June 2020	1.35	22.73
75.	Special repair of 23 Officer Residences in Police Lines and Sushant Lok Gurugram	1.21	26 December 2018	12	1.47	June 2020	1.57	29.75
<b>Total (11)</b>		<b>118.04</b>			<b>194.35</b>		<b>194.50</b>	<b>64.77</b>

Sr. No.	Name of Work	Agreement Amount (₹ in crore)	Date of allotment	Time limit in months	Payment made (₹ in crore)	Date of last payment	Enhanced to (₹ in crore)	Percentage of enhancement
<b>Haryana State Industrial Infrastructure Development Corporation (HSIIDC)</b>								
76.	Construction of Community Center Building at Residential Sector-I Manesar Distt. Gurugram	11.12	08 October 2018	18	14.68	-	14.76	32.73
<b>Total (01)</b>		<b>11.12</b>			<b>14.68</b>		<b>14.76</b>	<b>32.73</b>
<b>Haryana Shehri Vikas Pradhikaran (HSVP)</b>								
77.	Providing and laying of 500 mm i/d RCC NP3 pipeline, construction of manhole chamber etc. from Sec-17 (Pocket-C) to leg no. II Sector dividing road 14/17, Gurugram.	0.23	30 November 2018	3	2.94	06 October 2021	3.05	1226.09
78.	Annual maintenance of staff quarter in Sector 15-II Gurugram.	0.09	20 September 2019	2	0.48	19 June 2020	0.48	433.33
79.	Construction of outfall drains Master SWD leg No. I & II, fixing of SFRC main-hole heavy duty cover, etc.	298.48	24 December 2014	18	349.24	13 January 2020	483.20	61.89
80.	Construction of footpath along both sides of master road between Sector 49/50, Gurugram.	0.40	20 May 2016	1	0.87	30 July 2018	0.95	137.50
81.	Construction of Southern Peripheral Master Road from Sohna Road to NH-8 Gurugram	2.65	09 September 2013	4	9.63	22 April 2019	18.09	582.64
82.	Providing External Storm Water Drainage Scheme of Sec-81 to 98, Gurugram	226.93	25 March 2013	18	375.52	December 2019	378.16	66.64
<b>Total (06)</b>		<b>528.78</b>			<b>738.68</b>		<b>883.93</b>	<b>67.16</b>
<b>Urban Local Bodies (Municipal Corporation Karnal, Ambala &amp; Gurugram)</b>								
83.	Construction of Kalpana Chawla Dwar on Munak Road under Municipal Corporation Karnal	0.46	29 January 2021	4	0.56	16 June 2022	0.56	21.74
84.	Construction work for interior fit-out of office building of Municipal Corporation Karnal	9.92	20 August 2020	9	11.3	19 September 2022	11.3	13.91
85.	Construction of storm water nala from Kasturba Gandhi Chowk to Banoori Naka ward 3 & 4	1.44	06 November 2017	15	1.99	26 May 2022	1.99	38.19
86.	Construction of storm water nala from Jalbera Chowk to Session drain and Session drain to Zandu Tyre ward 7	0.62	01 January 2018	9	1.64	02 November 2021	1.64	164.52
87.	Supplying and fixing of Children playing equipment's and works in various parks of ward no. 1 to 11 Ambala City	0.29	08 March 2019	6	0.47	07 November 2020	0.47	62.07
88.	Construction of parking in Sector I market, ward no. 11	0.25	28 December 2018	6	0.35	04 October 2019	0.35	40.00
89.	Renovation/Repair/maintenance of office of Commissioner and Chief Engineer in the office complex Municipal Complex	0.26	08 October 2021	3	0.37	08 February 2022	0.37	42.31
90.	Construction of storm water nala from Chowki no. 4 Nahana House to Banoori naka via Miri Piri Chowk and Ghaas mandi Chowk RH side ward no. 3 & 4	1.25	06 November 2017	12	2.45	28 June 2022	2.45	96.00

Sr. No.	Name of Work	Agreement Amount (₹ in crore)	Date of allotment	Time limit in months	Payment made (₹ in crore)	Date of last payment	Enhanced to (₹ in crore)	Percentage of enhancement
91.	Construction of storm water nala from Jalbera Chowk to Radha Swami Satsang Bhawan via East Durga Nagar RH side 11	1.18	12 October 2017	15	2.54	26 May 2022	2.54	115.25
92.	Providing and laying 80 mm thick interlocking tiles in Kirti Nagar and Friends Colony ward no. 19 under Municipal Corporation Gurugram	0.07	27 September 2018	2	0.15	18 August 2020	0.15	114.29
93.	Repairing of water supply pipeline leakage/contaminated water problem in ward no. 19 in zone 2 under Municipal Corporation Gurugram	0.05	28 June 2019	1	0.11	11 May 2020	0.11	120.00
94.	Boundary wall at Dundaheera Border opposite market Sector-21 under Municipal Corporation Gurugram	0.10	24 June 2020	1	0.29	11 November 2021	0.29	190.00
95.	Repair and maintenance of shamshan ghat at village tikri, ward no. 29 in zone IV under Municipal Corporation Gurugram	0.14	01 May 2018	4	0.27	05 March 2020	0.27	92.86
96.	Providing and laying of 200 mm sewer line at Dundhera School wali gali to Sector 21 Shiv Mandir ward no. 4 in zone II under Municipal Corporation Gurugram	0.06	04 September 2019	3	0.24	22 May 2020	0.24	300.00
97.	Construction/Renovation of Community Centre Sector 39 under Municipal Corporation Gurugram	0.20	31 August 2018	2	0.36	03 June 2020	0.36	80.00
98.	Providing and making BM and BC slip road from NH-08 to Jhasra road red light ward no. 19 under Municipal Corporation Gurugram	0.19	05 August 2019	2	0.40	13 May 2020	0.40	110.53
<b>Total (16)</b>		<b>16.48</b>			<b>23.49</b>		<b>23.49</b>	<b>42.54</b>
<b>Grand Total (98)</b>		<b>1,134.53</b>			<b>1,798.08</b>		<b>1,997.28</b>	<b>76.04</b>

\*Date of last payment is taken as date of approval



**Appendix 5.2**  
**(Reference: Paragraphs 5.2 and 5.6; Pages 115, 137)**

**List of works wherein variations were made during execution due to significant changes in items of works**

Sr. No.	Name of Work	Agreement amount (₹ in crore)	Date of allotment	Time limit in months	Payment made (₹ in crore)
<b>Public Works Department (Buildings and Roads) {PWD (B&amp;R)}</b>					
1.	Construction of 4 Veterinary Hospitals at (i) Atta, (ii) Bapoli, (iii) Naultha (iv) Panipat	1.27	18 May 2018	12	0.30
2.	Construction of 5 Veterinary Dispensaries at (i) Adhmi, (ii) Kurar, (iii) Nohra, (iv) Passina Kalan, (v) Sitana	1.49	18 May 2018	12	1.48
3.	Improvement of road by providing four lanning of Ladwa Shahbad Road (SH-07) from km 43.10 to 45.50 (2.40 km) in Babain town	5.63	24 January 2018	06	3.28
4.	Four lanning of road from km 11.95 to 15.40 and strengthening from km 11.45 to 15.40 Dhand Pundri Rajound Alewa Road	22.42	30 January 2017	18	19.68
<b>Total (04)</b>		<b>30.81</b>			<b>24.74</b>
<b>Haryana State Agriculture Marketing Board (HSAMB)</b>					
5.	Special Repair of 6 link road in the notified area of MC Nissing, Nigdhu and Asandh	2.01	24 August 2020	06	2.90
<b>Total (01)</b>		<b>2.01</b>			<b>2.90</b>
<b>Haryana Police Housing Corporation (HPHC)</b>					
6.	Construction of new Hostel Block in Govt. College for Women in Sector -14, Gurugram	3.62	20 April 2020	15	3.50
7.	Construction of 96 Type-II houses in Police Lines, Gurugram (HPHC Gurugram)	16.37	26 June 2017	21	16.40
8.	Special Repair of 72 No. Houses in Police Colony at Sector 5, Panchkula	1.12	15 March 2021	06	0.79
9.	Construction of 48 Type-II and 12 Type-I houses in Police Lines, Rewari Group-III	7.43	15 May 2017	18	6.92
10.	Construction of welfare centre in Police line, Nuh	2.53	08 July 2019	12	2.14
11.	Construction of 12 Type-I, 96 Type-II, 24 Type-III and 12 Type-IV houses in Police Line, Sonapat	24.16	11 September 2019	24	23.61
12.	Construction of Mitra Kaksh Sadar Police Station, women station and police station Bawani Khera in district Bhiwani	0.91	17 February 2020	08	0.87
13.	Construction of 96 Type-II, 12 Type-III and 12 Type-IV houses in Police Lines, Karnal	20.46	16 September 2019	24	19.50
14.	Construction of 18 Type-II and 2 Type-III houses in Women police station at Ambala City	3.39	25 November 2019	15	3.08
15.	Construction of Police Station at Barara Distt. Ambala	2.26	04 September 2018	12	2.05
<b>Total (10)</b>		<b>82.25</b>			<b>78.86</b>
<b>Haryana State Industrial Infrastructure Development Corporation (HSIIDC)</b>					
16.	Civil Foundations for Silos in Mega Food park at Industrial Estate, Barhi Sonipat	2.21	13 April 2017	02	2.09
17.	Construction of Sector Road (60 mtr. Wide) between Sector M-14 & M-15 and part portion of 75 mtr. Wide Sector Road in Sector-16 at IMT Manesar	6.79	24 July 2019	06	5.79
18.	Upgradation of infrastructure facilities in old Industrial Area (Near Assandh Road), Panipat	16.94	01 March 2019	12	12.38
19.	Construction of two bay fire station building in Ph-1 Sec-38 at Industrial Estate, Rai Distt Sonipat	1.88	08 March 2019	08	1.95
<b>Total (04)</b>		<b>27.82</b>			<b>22.21</b>
<b>Grand Total (19)</b>		<b>142.89</b>			<b>128.71</b>

## Appendix 5.3

(Reference: Paragraphs 5.5 and 5.9.1; Page 118, 142)

## List of works wherein expenditure was incurred without getting enhancement approved from the competent authority

(₹ in crore)

Sr. No.	Sr. No. in Appendix 5.1	Name of work	Agreement amount	Payment made
<b>Public Works Department (Buildings and Roads)</b>				
1.	3	NCC Academy Gharaunda in Karnal District	17.91	42.17
2.	4	Boundary Wall around Kalpana Chawla Medical University at village Kutail (Karnal)	3.76	36.96
3.	5	Construction of Govt. College at Jundla in Karnal District	10.85	15.40
4.	7	War Heroes Memorial Stadium at Ambala Cantt	40.49	114.03
5.	12	Kabaddi Hall in Village Pai in Kaithal District	3.65	5.00
6.	19	RVDEC at village Keorak in Kaithal District.	4.98	5.83
7.	20	New Sports Stadium at Samaspur, Charkhi Dadri	10.85	11.10
8.	21	Badhra to Berla Road from km 0.00 to 8.10	3.20	6.23
9.	22	Govt. Sr. Sec. School at Dhigawa Jattan in Bhiwani District	3.62	5.00
10.	23	Construction of Workshop Block Haryana Roadways at Loharu	2.38	4.16
11.	26	Construction of library and workshop block in the campus of Ch. Bansilal Govt. Polytechnic at Bhiwani	5.75	8.04
<b>Haryana State Agriculture Marketing Board</b>				
12.	51	Special Repair of three link roads in Sompat i.e. Katwal to Bali Engineering College, Mahra to Sikandrapur Majra and Isharpur Kheri to Siwana Mall	0.96	1.04
<b>Executive Engineer, Panchayati Raj</b>				
13.	64	Construction of VKC at Village Indergarh (Rohtak)	0.22	0.27
<b>Municipal Corporation, Ambala</b>				
14.	87	Supplying and fixing of Children playing equipment's and works in various parks of ward no. 1 to 11 Ambala City	0.29	0.47
<b>Total</b>			<b>108.91</b>	<b>255.70</b>



**Appendix 5.4**  
**(Reference: Paragraph 5.6 (ii); Page 138)**

**List of works wherein variations occurred due to change in quantities of various items during execution of work**

Sr. No	Name of the work	Agreement amount	Payment upto last paid bill	Items executed beyond DNIT		Non-execution of DNIT items		More than 20 per cent variations		Total amount of Variation	Percentage to Agreement amount
				Items	Amount	Items	Amount	Items	Amount		
<b>Haryana Police Housing Corporation</b>											
1	Construction of new Hostel Block in Government College for Women in Sector -14, Gurugram	361.85	349.47	38	22.10	20	73.10	53	83.24	178.44	49.31
2	Construction of 96 Type-II houses in Police Lines, Gurugram (HPHC Gurugram)	1,637.00	1,640.00	42	144.44	31	43.16	50	478.96	666.56	40.72
3	Special Repair of 72 No. Houses in Police Colony at Sector 5, Panchkula	111.88	78.46	12	9.46	16	8.46	0	0.00	17.92	16.02
4	Construction of 48 Type-II and 12 Type-I houses in Police Lines, Rewari Group-III	743.00	692.00	19	59.44	26	76.26	26	35.23	170.93	23.01
5	Construction of welfare centre in Police line, Nuh	253.00	213.67	20	24.45	36	39.69	28	60.03	124.17	49.08
6	Construction of 12 Type-1, 96 Type-II, 24 Type-III and 12 Type-IV houses in Police Line, Sonapat	2,416.00	2,361.00	19	34.00	0	0.00	73	276.00	310.00	12.83
7	Construction of Mitra Kaksh Sadar Police Station, women station and police station Bawani Khera in district Bhiwani	90.45	86.61	64	15.70	22	8.05	25	12.07	35.82	39.60
8	Construction of 96 Type-II, 12 Type-III and 12 Type-IV houses in Police Lines, Karnal	2,046.00	1,950.00	16	32.2	42	337.08	75	431.77	801.05	39.15
9	Construction of 18 Type-II and 2 Type-III houses in Women police station at Ambala City	338.08	308.00	16	12.14	77	31.29	65	92.32	135.75	40.15
10	Construction of Police Station at Barara Distt. Ambala	225.80	205.29	65	54.25	42	27.68	64	66.94	148.87	65.93

Sr. No	Name of the work	Agreement amount	Payment upto last paid bill	Items executed beyond DNIT		Non-execution of DNIT items		More than 20 per cent variations		Total amount of Variation	Percentage to Agreement amount
				Items	Amount	Items	Amount	Items	Amount		
<b>Haryana State Industrial Infrastructure Development Corporation</b>											
11	Civil Foundations for Silos in Mega Food park at Industrial Estate, Barhi Sonipat	220.98	209.46	7	22.03	4	1.59	6	60.99	84.61	38.29
12	Construction of Sector Road (60 mtr. Wide) between Sector M-14 & M-15 and part portion of 75 mtr. Wide Sector Road in Sector-16 at IMT Manesar	678.88	578.83	7	19.23	11	6.08	22	198.69	224.00	33.00
13	Upgradation of infrastructure facilities in old Industrial Area (Near Assandh Road), Panipat	1693.62	1134	7	39.18	4	186.33	5	287.59	513.10	30.30
14	Construction of two bay fire station building in Ph-1 Sec-38 at Industrial Estate, Rai District Sonipat	188.32	178.62	31	7.54	28	5.36	36	26.76	39.66	21.06
<b>Total</b>		<b>11,004.86</b>	<b>9,910.41</b>	<b>363</b>	<b>496.16</b>	<b>359</b>	<b>844.13</b>	<b>528</b>	<b>2,110.59</b>	<b>3,450.88</b>	<b>31.36</b>
<b>Total ₹ in crore</b>		<b>110.05</b>	<b>99.10</b>	<b>363</b>	<b>4.96</b>	<b>359</b>	<b>8.44</b>	<b>528</b>	<b>21.11</b>	<b>34.51</b>	<b>31.36</b>

**Appendix 5.5**  
**(Reference: Paragraph 5.8.2; Page 141)**

**Detail of works wherein time and cost overrun occurred due to enhancement and variation in agreement**

Sr. No.	Sr. No. in Appendix 5.1	Name of work	Initial agreement amount (₹ in crore)	Payment made (₹ in crore)	Running Bill and date	Scheduled completion period (in months)	Scheduled date of completion	Date of completion/ Date of last bill paid	Time overrun (in months)
1.	1	Construction of 4 lane ROB on Delhi Ambala Railway line at LC No. 61 at railway Km 99/21-23 crossing Kond-Munak- Salwan Assandh road (MDR 114) in Kamal District	21.93	37.36	15 <sup>th</sup> & R. Bill date 18 October 2024	24	January 2021	October 2024	45
2.	2	HL Bridge over Dhanuara Escape	1.56	4.19	5 <sup>th</sup> & F. Bill date 3 September 2021	6	August 2020	June 2021	10
3.	5	Govt. College at Jundla in Kamal District	10.85	15.40	19 <sup>th</sup> & R. Bill date 24 June 2022	21	April 2019	June 2022	38
4.	8	Link road from Jagadhri Ambala Road to Munnerheri in Ambala District (KM 0.00 to KM 3.040), Road ID-178	1.14	4.53	4 <sup>th</sup> & F. Bill date 01 May 2024	6	March 2020	June 2021	15
5.	10	All-weather swimming pool in sports complex at Ambala Cantt.	8.29	31.35	19 <sup>th</sup> & F. Bill date 09 September 2024	18	September 2020	December 2021	15
6.	15	50 Bedded Hospital at Kalayat in Kaithal District	5.88	7.99	8 <sup>th</sup> F. Bill date 9 December 2021	18	September 2019	July 2020	10
7.	16	SDO (C) Complex Building at Kalayat in Kaithal District	8.57	12.63	16 <sup>th</sup> F. Bill date 17 July 2023	9	March 2021	January 2022	9
8.	18	Construction of Community Health Centre, Muana, Jind	4.07	7.16	6 <sup>th</sup> F. Bill date 22 July 2021	18	January 2021	May 2021	4
9.	21	Widening and strengthening & CCP on Badhra to Berla Road from km 0.00 to 8.10 (Road ID 2429)	3.02	6.23	4 <sup>th</sup> R. Bill, 30 September 2021	9	June 2020	September 2021	15
10.	23	Workshop Block Haryana Roadways at Loharu	2.38	4.16	3 <sup>rd</sup> R. Bill date 29 September 2021	12	June 2018	December 2020	27
11.	26	Library and workshop block in the campus of Ch. Bansri Lal Govt. Polytechnic at Bhiwani	5.75	8.04	9 <sup>th</sup> R. Bill date 21 January 2021	18	October 2018	September 2021	35
		<b>Total</b>	<b>73.44</b>	<b>139.04</b>					
		<b>Sr. No. in Appendix 5.2</b>							
12.	3.	Four lanning of Ladwa Shahbad Road (SH-07) from km 43.10 to 45.50 (2.40 km) in Babain	5.63	3.28	3 <sup>rd</sup> R. Bill date 7 December 2020	6	November 2018	November 2020	24
13.	4.	Four lanning of road from km 11.95 to 15.40 and strengthening from km 11.45 to 15.40 Dhand Pundri Rajound Alewa Road	22.42	19.68	15 <sup>th</sup> R. Bill date 23 October 2019	18	August 2018	September 2019	12
		<b>Total</b>	<b>28.05</b>	<b>22.96</b>					
		<b>Grand Total</b>	<b>102.49</b>	<b>162.00</b>					

<sup>1</sup> The work was under progress on date of audit i.e. September 2022.

**Appendix 6.1**  
**(Reference: Paragraph 6.1; Page 148)**

**Details of total beneficiaries and multiple payments to single beneficiary**

Sr. No.	Name of District	No. of total Beneficiaries	Total No. of beneficiaries overpaid	Payments made to each beneficiary	2015	2016	2017	2018	2019	2020	2021	2022	Total extra payments	Total extra payments district wise
1	Sonipat	22,742	558	double	27	62	341	93	27	7	1	0	558	566
			4	triple	0	1	2	0	1	0	0	0	8	
2	Panipat	15,765	336	double	2	7	19	194	59	52	3	0	336	342
			3	triple	0	0	0	3	0	0	0	0	6	
3	Ambala	24,624	111	double	3	3	8	27	33	30	7	0	111	115
			2	triple			1	1					4	
4	Bhiwani	27,813	95	double	2	4	9	15	42	20	3	0	95	95
5	Fatehabad	13,615	261	double	10	48	23	21	53	64	42	0	261	263
			1	triple						1			2	
6	Hisar	26,346	559	double	105	62	145	197	27	20	3	0	559	569
			5	triple	1			3		1			10	
7	Jhajjar	13,354	96	double	8	67	4	7	4	4	2	0	96	96
8	Jind	25,719	946	double	37	175	288	294	74	69	9	0	946	1,338
			193	triple			8	168	17				386	
			2	four				2					6	
9	Kaithal	22,275	777	double	88	134	79	121	180	142	33	0	777	913
			65	triple	29	14	1	9	7	4	1		130	
			2	four					1	1			6	
10	Kurukshetra	18,872	272	double	85	9	24	43	72	38	1	0	272	282
			5	triple	1			1	3				10	
11	Mewat	17,530	492	double	72	63	102	144	67	34	10	0	492	522
			12	triple	2	1		3	2	3	1		24	
			2	four				1	1				6	
12	Yamunanagar	25,540	74	double	4	13	11	31	12	3	0	0	74	74

Sr. No.	Name of District	No. of total Beneficiaries	Total No. of beneficiaries overpaid	Payments made to each beneficiary	2015	2016	2017	2018	2019	2020	2021	2022	Total extra payments	Total extra payments district wise
13	Narnaul	14,737	981	double	189	237	153	350	42	6	3	1	981	1,186
			26	triple	14	1	7	3	1				52	
			32	four	27	2		3					96	
			11	five	11								44	
			1	six	1								5	
			1	nine	1								8	
14	Panchkula	5,489	69	double	1	2	4	11	13	21	17	0	69	69
15	Rohtak	16,692	176	double	8	64	21	19	20	36	8	0	176	178
			1	triple				1					2	
16	Sirsa	16,560	530	double	6	17	37	118	82	98	172	0	530	613
			20	triple		2	3		1	5	9		40	
			13	four				2		3	8		39	
			1	five							1		4	
17	Faridabad	4,962	59	double	21	21	9	8	0	0	0	0	59	63
			2	triple			1	1					4	
18	Gurugram	10,976	46	double	18	20	2	5	1	0	0	0	46	46
19	Karnal	24,886	750	double	54	131	272	267	18	8	0	0	750	801
			24	triple	1	3	17	2	1				48	
			1	four			1						3	
20	Rewari	11,691	105	double	4	11	14	33	18	15	10	0	105	107
			1	triple				1					2	
		<b>3,60,188</b>	<b>7,723</b>		<b>832</b>	<b>1,174</b>	<b>1,606</b>	<b>2,202</b>	<b>879</b>	<b>685</b>	<b>343</b>	<b>1</b>	<b>8,238</b>	<b>8,238</b>

Extra payment of ₹ 17,29,98,000 = 8,238 cases x ₹ 21,000

Say ₹ 17.30 crore

**Appendix 6.2**  
**(Reference: Paragraph 6.5; Page 156)**  
**Cases of avoidable payment of interest made to landowners in Gurugram**

Sr. No	LAC No.	Village	Award No	Date of award	Name of court	Date of Decision of Court	Interest paid upto	delay of days from date of judgement of court to date of interest paid after deduction of grace period 90/120 days	Principal	Extra Panel Interest @ 15 per cent of delay of date
1	1448/10	Chauna	66	23 December 2009	ADJ	30 May 2018	30 September 2022	1464	10,59,27,298	6,37,30,506
2	1450/2010	Chauna	66	23 December 2009	ADJ	30 May 2018	30 September 2022	1464	15,17,97,601	9,13,28,091
3	426/10	Harsuru	18	26 September 2008	SC	5 September 2017	07 April 2021	1190	7,43,09,389	3,63,40,345
4	422/10	Harsuru	18	26 September 2008	SC	5 September 2017	26 May 2019	508	1,33,25,574	27,81,942
5	427/10	Harsuru	18	26 September 2008	SC	5 September 2017	26 May 2019	508	4,26,41,838	89,02,214
6	716/10	Harsuru	18	26 September 2008	SC	5 September 2017	27 March 2018	83	12,03,74,355	41,05,920
7	665/10	Sihi	17	26 September 2008	SC	5 September 2017	08 September 2018	248	1,64,93,885	16,81,021
8	540/10	Sihi	17	26 September 2008	SC	5 September 2017	30 April 2022	1578	5,10,58,280	3,31,10,945
9	539/10	Sihi	17	26 September 2008	SC	5 September 2017	30 April 2022	1578	5,45,14,718	3,53,52,421
10	100/12	Pawala Khursapur	75	31 March 2010	HC	23 October 2019	30 September 2022	983	4,36,37,778	1,76,28,467
11	78/12	Pawala Khursapur	75	31 March 2010	HC	23 October 2019	30 September 2022	983	12,74,797	5,14,983
12	93/12	Pawala Khursapur	75	31 March 2010	HC	23 October 2019	30 September 2022	983	39,21,441	15,84,155
13	55/13	Pawala Khursapur	75	31 March 2010	HC	23 October 2019	30 September 2022	983	38,68,804	15,62,891
14	95/12	Pawala Khursapur	75	31 March 2010	HC	23 October 2019	30 September 2022	983	49,71,709	20,08,434
15	79/12	Pawala Khursapur	75	31 March 2010	HC	23 October 2019	30 September 2022	983	4,18,13,355	1,68,91,450
16	23/16	Wazirabad	45	22 February 2007	ADJ	20 March 2018	31 January 2022	1323	9,41,09,510	5,11,67,212
17	224/08	Rewari	25	07 December 2006	HC	29 January 2016	27 November 2017	578	3,99,90,984	94,99,228
18	296/11	Dhankot	82	31 March 2010	HC	23 October 2019	11 July 2022	902	5,22,11,145	1,93,53,885
19	312/11	Dhankot	82	31 March 2010	HC	23 October 2019	11 July 2022	902	2,72,68,494	1,01,08,020
20	1512/10	Dhankot	82	31 March 2010	HC	23 October 2019	11 July 2022	902	1,64,41,296	60,94,541
21	333/11	Bajghera	72	31 March 2010	HC	1 November 2019	30 September 2022	974	5,44,47,820	2,17,94,045
22	338/11	Bajghera	72	31 March 2010	HC	1 November 2019	30 September 2022	974	7,82,68,741	3,13,28,940
23	335/11	Bajghera	72	31 March 2010	HC	1 November 2019	30 September 2022	974	1,22,88,571	49,18,795
24	331/11	Bajghera	72	31 March 2010	HC	1 November 2019	30 September 2022	974	81,86,025	32,76,653
25	352/11	Bajghera	72	31 March 2010	HC	1 November 2019	30 September 2022	974	31,38,312	12,56,185
26	346/11	Bajghera	72	31 March 2010	HC	1 November 2019	30 September 2022	974	3,42,18,942	1,36,96,952
27	353/11	Bajghera	72	31 March 2010	HC	1 November 2019	30 September 2022	974	5,25,57,270	2,10,37,307
28	349/11	Bajghera	72	31 March 2010	HC	1 November 2019	30 September 2022	974	60,49,757	24,21,560
29	345/11	Bajghera	72	31 March 2010	HC	1 November 2019	30 September 2022	974	39,22,889	15,70,230
30	339/11	Bajghera	72	31 March 2010	HC	1 November 2019	30 September 2022	974	1,87,16,438	74,91,703
31	332/11	Bajghera	72	31 March 2010	HC	1 November 2019	30 September 2022	974	90,74,637	36,32,341
32	341/11	Bajghera	72	31 March 2010	HC	1 November 2019	30 September 2022	974	6,39,00,566	2,55,77,733
									<b>Total</b>	<b>55,17,49,113</b>

**Appendix 6.3**  
**(Reference: Paragraph 6.5; Page 156)**  
**Cases of avoidable payment of interest made to landowners in Faridabad**

Sr. No.	Lac no.	Name of village	Award No	Award Date	Name of Court	Date of Judgement of Court	Interest paid upto	Delay (in days) from Date of Judgement of Court to interest paid excluding 90 days grace period	Principal Enhanced Amount	Interest Paid on Principal Enhanced Amount from Date of Judgement of Court to payment @ 15 per cent (14*H4*15/36500)
1	250/11	Baselwa	1	27 August 2010	SC	14 July 2021	30 April 2022	200	5,15,35,594	42,35,802
2	250/11	Baselwa	1	27 August 2010	SC	14 July 2021	30 April 2022	200	6,01,51,608	49,43,968
3	62/14	FM Neemka	11	27 August 2010	ADJ	18 March 2015	30 November 2021	2359	77,70,515	75,33,142
4	62/14	FM Neemka	11	27 August 2010	ADJ	18 March 2015	09 June 2021	2185	51,38,652	46,14,228
5	62/14	FM Neemka	11	27 August 2010	ADJ	10 June 2021	30 November 2021	83	25,69,326	1,81,613
6	62/14	FM Neemka	11	27 August 2010	HC	31 May 2019	09 June 2021	650	1,99,36,234	53,25,432
7	62/14	FM Neemka	11	27 August 2010	HC	10 June 2021	30 November 2021	83	99,68,117	7,04,595
8	62/14	FM Neemka	11	27 August 2010	HC	31 May 2019	09 June 2021	650	1,31,83,856	35,21,715
9	62/14	FM Neemka	11	27 August 2010	HC	10 June 2021	30 November 2021	83	65,91,928	2,24,848
10	62/14	FM Neemka	11	27 August 2010	SC	14 July 2021	30 November 2021	49	2,32,58,937	4,68,365
11	62/14	FM Neemka	11	27 August 2010	SC	14 July 2021	30 November 2021	49	1,53,81,165	3,09,730
12	1328/11	FM Neemka	27	04 February 2011	ADJ	08 May 2014	28 May 2015	295	40,16,094	4,86,883
13	1328/11	FM Neemka	27	04 February 2011	SC	14 July 2021	30 April 2022	200	6,35,22,810	52,21,053
14	320/11	Bhotala	24	04 February 2011	S C	14 July 2021	12 June 2022	243	8,00,95,522	79,98,580
15	254/11	Basela	1	27 August 2010	S C	14 July 2021	30 April 2022	200	8,95,79,672	73,62,713
16	254/11	Basela	1	27 August 2010	S C	14 July 2021	30 April 2022	200	5,12,74,609	42,14,351
17	865/11	Pehldpur	3	27 August 2010	ADJ	24 March 2014	11 November 2014	142	80,36,451	4,68,976
19	857/11	Palwali	7	27 August 2010	SC	14 July 2021	30 April 2022	200	1,73,04,842	14,22,316
20	858/11	Palwali	7	27 August 2010	SC	31 January 2022	30 July 2022	90	1,32,78,816	4,91,134
21	858/11	Palwali	7	27 August 2010	SC	31 January 2022	30 July 2022	90	46,97,028	1,73,726
22	86/13	Palwali	7	27 August 2010	SC	14 July 2021	30 April 2022	200	58,14,091	4,77,870
23	295/11	Bhatola	24	04 February 2011	SC	14 July 2021	30 April 2022	200	5,37,60,955	44,18,709
24	1282/11	Faridpur	25	04 February 2011	SC	30 September 2021	30 April 2022	122	1,48,83,463	7,46,212
25	98/15	Faridpur	25	04 February 2011	SC	14 July 2021	30 April 2022	200	3,56,74,406	29,32,143
26	98/15	Faridpur	25	04 February 2011	ADJ	06 April 2015	30 April 2022	2491	90,52,818	92,67,357
27	1222/11	FM Neemka	27	04 February 2011	SC	18 February 2022	30 June 2022	42	2,80,77,996	4,84,634
28	1133/11	FM Neemka	27	04 February 2011	ADJ	22 January 2013	14 November 2014	571	9,77,732	2,29,432
29	1133/11	FM Neemka	27	04 February 2011	SC	14 July 2021	30 April 2022	200	77,32,418	6,35,541
30	1173/11	F M Neemka	27	04 February 2011	SC	14 July 2021	30 April 2022	200	1,96,69,222	16,16,648
31	839/11	Baselwa	1	27 August 2010	SC	14 July 2021	30 April 2022	200	1,27,87,854	10,51,056
32	67/10	Baroli	1	24 April 2009	SC	14 July 2021	31 August 2022	323	6,93,738	92,087



Sr. No.	Lac no.	Name of village	Award No	Award Date	Name of Court	Date of Judgement of Court	Interest paid upto	Delay (in days) from Date of Judgement of Court to interest paid excluding 90 days grace period	Principal Enhanced Amount	Interest Paid on Principal Enhanced Amount from Date of Judgement of Court to payment @ 15 per cent (14*H4*15/36500)
33	372/10	Sihi	4	24 April 2009	SC	14 July 2021	15 June 2022	246	5,16,81,120	52,24,749
34	1273/11	Faridpur	25	04 February 2011	SC	14 July 2021	30 April 2022	200	2,46,59,333	20,26,794
35	377/11	Firojpur	10	09 June 2009	ADJ	24 December 2011	08 September 2012	169	9,15,023	63,550
36	377/11	Firojpur	10	09 June 2009	HC	10 December 2015	05 April 2019	1122	53,07,138	24,47,100
37	377/11	Firojpur	10	09 June 2009	SC	02 November 2017	28 September 2018	240	86,92,726	8,57,365
38	261/11	Palwal	7	09 June 2009	ADJ	24 July 2013	08 May 2014	198	99,006	8,056
39	261/11	Palwal	7	09 June 2009	SC	08 November 2017	12 November 2018	279	75,760	8,686
40	300/10	Palwal	7	09 June 2009	SC	08 November 2017	30 April 2022	1544	2,23,08,207	1,41,55,016
41	1152/11	FM Neemka	27	04 February 2011	ADJ	22 January 2013	04 July 2015	803	29,46,100	9,72,213
42	187/10	Firoz Pur	10	09 June 2009	ADJ	30 November 2012	08 March 2015	738	97,927	29,700
43	187/10				HC	13 February 2017	30 April 2022	1812	5,67,979	4,22,950
44	187/10				SC	07 May 2019	30 April 2022	999	9,30,308	3,81,936
45	93/99	Ajrondha	13	29 June 1998	SC	11 March 2019	31 December 2020	571	85,35,622	20,02,948
46	35/12	Bhatola	18	27 August 2010	SC	14 July 2021	30 April 2022	200	1,09,64,778	9,01,215
47	807/11	Faridpur	9	27 August 2010	SC	14 July 2021	30 April 2022	200	2,58,70,070	21,26,307
48	1089/11	Bhatola	24	04 February 2011	SC	14 July 2021	30 April 2022	200	2,12,01,425	17,42,583
49	91/99	Ajrondha	15	29 June 1998	SC	11 March 2019	31 December 2020	571	2,69,92,841	63,34,074
50	424/11	Bhatola	18	27 August 2010	SC	14 July 2021	30 April 2022	200	1,21,08,343	9,95,206
51	1130/11	FM Neemka	27	04 February 2011	ADJ	22 January 2013	15 September 2014	511	12,11,185	2,54,349
52					ADJ	22 January 2013	15 January 2014	268	20,34,052	2,24,024
53					SC	14 July 2021	30 April 2022	200	2,56,65,045	21,09,456
54	326/10	Palwal	7	09 June 2009	ADJ	16 January 2014	08 December 2014	236	20,93,702	2,03,060
55					SC	08 November 2017	28 March 2019	415	16,02,129	2,73,240
56	68/14	Neemka	10	27 August 2010	SC	06 September 2021	30 April 2022	146	51,37,732	3,08,264
57	523/11	Kheri Khurd	8	27 August 2010	ADJ	18 March 2013	27 March 2015	649	14,20,260	3,78,801
58					ADJ	18 March 2013	31 July 2022	3332	14,20,260	19,44,783
59					SC	14 July 2021	30 April 2022	200	1,92,52,264	15,82,378
60	1159/11	FM Neemka	27	04 February 2011	ADJ	22 January 2013	10 June 2014	414	6,19,460	1,05,393
61					SC	14 July 2021	30 April 2022	200	48,99,025	4,02,660
63	67/16	Kheri Kalan	10	09 August 2012	SC	14 July 2021	30 April 2022	200	7,61,85,853	62,61,851
64	1204/11	F M Neemka	27	04 February 2011	SC	14 July 2021	30 April 2022	200	1,61,59,472	13,28,176
65	427/11	Bhatola	18	27 August 2010	SC	14 July 2021	30 April 2022	200	1,29,82,835	10,67,082
66	479/11	Fajipur	11	27 August 2010	SC	14 July 2021	30 April 2022	200	5,00,99,253	41,17,747
67	621/11	Neemka	10	27 August 2010	SC	14 July 2021	30 April 2022	200	98,28,499	8,07,822
68	540/11	Kheri Kalan	16	27 August 2010	SC	30 September 2021	30 April 2022	122	1,01,17,380	5,07,255
69	252/11	Baselwa	1	27 August 2010	SC	14 July 2021	30 April 2022	200	1,81,51,477	14,91,902



Sr. No.	Lac no.	Name of village	Award No	Award Date	Name of Court	Date of Judgement of Court	Interest paid upto	Delay (in days) from Date of Judgement of Court to interest paid excluding 90 days grace period	Principal Enhanced Amount	Interest Paid on Principal Enhanced Amount from Date of Judgement of Court to payment @ 15 per cent (14*H4*15/36500)
70	655/11	Neemka	10	27 August 2010	SC	14 July 2021	30 April 2022	200	46,12,133	3,79,079
71	445/11	F M Neemka	11	27 August 2010	SC	31 January 2022	30 June 2022	60	2,36,52,565	5,83,214
72	729/11	Bhudena	17	27 August 2010	ADJ	16 October 2015	30 April 2022	2298	5,20,98,013	4,92,00,507
73		Bhudena	17	27 August 2010	SC	14 July 2021	30 April 2022	200	4,93,72,564	40,58,019
74	237/11	Wazirpur	4	27 August 2010	SC	14 July 2021	30 April 2022	200	1,04,19,603	8,56,406
75	599/11	Mutrzapur	15	27 August 2010	ADJ	24 August 2013	17 September 2014	299	16,89,116	2,07,553
76					SC	14 July 2021	30 April 2022	200	2,03,86,052	16,75,566
77	1037/11	Bhatola	18	27 August 2010	SC	14 July 2021	15 May 2022	215	1,80,68,640	15,96,476
78	473/11	F.M. Neemka	11	27 August 2010	ADJ	07 November 2013	27 September 2014	234	18,29,388	1,75,922
79						07 November 2013	27 September 2014	234	18,29,388	1,75,922
80					SC	14 July 2021	30 April 2022	200	2,03,38,602	16,71,666
81	533/11	Kheri Kalan	16	27 August 2010	ADJ	27 May 2013	26 June 2014	305	8,76,704	1,09,888
82						27 May 2013	26 June 2014	305	8,76,704	1,09,888
83					SC	30 September 2021	30 April 2022	122	1,08,40,050	5,43,487
84	545/11	Kheri Kalan	11	27 August 2010	ADJ	27 May 2013	17 June 2014	296	9,35,151	1,13,755
85					ADJ	27 May 2013	17 June 2014	296	9,35,151	1,13,755
86					SC	13 November 2021	30 April 2022	78	1,15,62,720	3,70,641
87	169/12	Neemak	1	22 May 2012	ADJ	07 May 2014	22 June 2015	321	12,47,899	1,64,620
88					SC	14 July 2021	30 April 2022	200	65,83,877	5,41,141
89	870/11	Pahladpur	3	27 August 2010	SC	14 July 2021	30 April 2022	200	3,10,45,125	25,51,654
90	239/11	Wazirpur	4	27 August 2010	SC	14 July 2021	30 April 2022	200	1,52,32,718	12,52,004
91	720/11	Budhena	17	27 August 2010	SC	14 July 2021	30 April 2022	200	5,83,58,458	47,96,586
92	476/11	F M Neemka	11	27 August 2010	SC	14 July 2021	30 April 2022	200	1,99,02,775	16,35,845
93	551/11	Kheri Kalan	16	27 August 2010	SC	13 November 2021	30 April 2022	78	1,18,78,575	3,80,765
94	615/11	Badshahpur	6	27 August 2010	SC	14 July 2021	30 April 2022	200	2,15,89,849	17,74,508
95	1102/11	Neemka	1	22 May 2012	SC	14 July 2021	30 April 2022	200	2,09,869	17,250
96	59/14	Chandawali	6	07 September 2001	HC	19 November 2015	15 October 2022	2432	11,23,115	11,22,500
97	91/01	Ajronda	13	29 June 1998	SC	11 March 2019	31 December 2020	571	3,12,279	73,279
98	803/11	Kheri Khurd	8	27 August 2010	SC	14 July 2021	30 April 2022	200	37,23,689	3,06,057
99		Kheri Khurd	8	27 August 2010	SC	14 July 2021	30 April 2022	200	76,85,059	6,31,649
100	685/11	Neemka	10	27 August 2010	ADJ	27 February 2013	20 October 2013	145	1,55,858	9,287
101					ADJ	27 February 2013	20 October 2013	145	1,55,858	9,287
102					SC	31 January 2022	31 July 2022	91	13,30,423	49,754
103	157/11 wrongly mentioned 1057/11 in dump data	Riwazpur	14	27 August 2010	SC	14 July 2021	30 April 2022	200	1,09,48,964	8,99,915

Sr. No.	Lac no.	Name of village	Award No	Award Date	Name of Court	Date of Judgement of Court	Interest paid upto	Delay (in days) from Date of Judgement of Court to interest paid excluding 90 days grace period	Principal Enhanced Amount	Interest Paid on Principal Enhanced Amount from Date of Judgement of Court to payment @ 15 per cent (14*H4*15/36500)
104	197/99	Ajronda	15	29 June 1998	HC	06 October 2010	29 October 2011	298	1,01,14,049	12,38,625
105					HC	06 October 2010	29 October 2011	298	8,25,635	1,01,112
106					SC	11 March 2019	31 December 2020	571	21,25,229	4,98,701
107					SC	11 March 2019	31 December 2020	571	42,50,461	9,97,403
108					SC	11 March 2019	31 December 2020	571	3,46,976	81,421
109					SC	11 March 2019	31 December 2020	571	1,73,487	40,710
110					SC	11 March 2019	31 December 2020	571	3,46,976	81,421
111					SC	11 March 2019	31 December 2020	571	42,50,461	9,97,403
112	116/2000	Ajronda	15	29 June 1998	HC	06 October 2010	17 October 2011	286	16,84,298	1,97,963
113					SC	11 March 2019	31 December 2020	571	17,69,581	4,15,246
114	567/11	Kheri Kalan	10	09 August 2012	SC	14 July 2021	30 April 2022	200	2,22,63,844	18,29,905
115	254/2000	Tilori Banger	16	29 June 1998	HC	06 October 2010	29 September 2011	268	15,85,222	1,74,592
116					SC	11 March 2019	31 December 2020	571	8,32,743	1,95,409
117	255/11	Basliwa	1	27 August 2010	SC	14 July 2021	30 April 2022	200	5,12,74,609	42,14,351
118	130/13 wrongly mentioned 130/11	Kheri Kalan	10	09 August 2012	SC	14 July 2021	30 April 2022	200	1,05,84,893	8,69,991
119	317/11	Riwajpur	14	27 August 2010	SC	14 July 2021	30 April 2022	200	10,04,05,352	82,52,495
120	312/2k	Ajronda	13	29 June 1998	SC	11 March 2019	31 December 2020	571	73,55,904	17,26,118
121	694/11	Budena	17	27 August 2010	SC	14 July 2021	30 April 2022	200	9,58,67,660	78,79,534
122	440/11	Neemka	10	27 August 2010	SC	14 July 2021	30 April 2022	200	98,70,542	8,11,277
123	275/99	Ajronda	13	29 June 1998	SC	11 March 2019	31 December 2020	571	48,95,837	11,48,845
124	103/13	Kheri Kalan	10	09 August 2012	SC	13 November 2021	30 April 2022	78	3,81,70,831	12,23,558
125	129/13	Kheri Kalan	10	09 August 2012	SC	30 September 2021	30 April 2022	122	4,06,06,673	20,35,896
126	830/11	Faridpur	9	27 August 2010	SC	14 July 2021	30 April 2022	200	11,84,208	97,332
127	628/11	Neemka	10	27 August 2010	SC	31 January 2022	15 May 2022	14	49,56,205	28,515
128	287/11	Takawali	5	27 August 2010	HC	31 May 2019	15 October 2022	1143	1,54,58,719	72,61,363
129	648/2K	Ajronda	13-15	29 June 1998	SC	11 March 2019	31 December 2020	571	5,13,510	1,20,499
130	369/2k	Ajronda	13-15	29 June 1998	SC	11 March 2019	31 December 2020	571	2,69,60,072	63,26,384
131	299/2k	Ajronda	13-15	29 June 1998	SC	11 March 2019	31 December 2020	571	12,90,749	3,02,884
132	498/2K	Ajrondha	13	29 June 1998	SC	11 March 2019	31 December 2020	571	95,76,552	22,47,210
133	59/99	Ajrondha	13	29 June 1998	SC	11 March 2019	31 December 2020	571	70,52,295	16,54,874
134	179/98	Ajronda	13	29 June 1998	HC	06 October 2010	29 November 2011	329	70,83,960	9,57,790
135					SC	11 March 2019	31 December 2020	571	24,80,879	5,82,157
									<b>Total</b>	<b>27,86,72,378</b>