

Appendix 1.1

(Refer Paragraph 1.1)

Medical Colleges and Hospitals in the State at the end of 2022-23

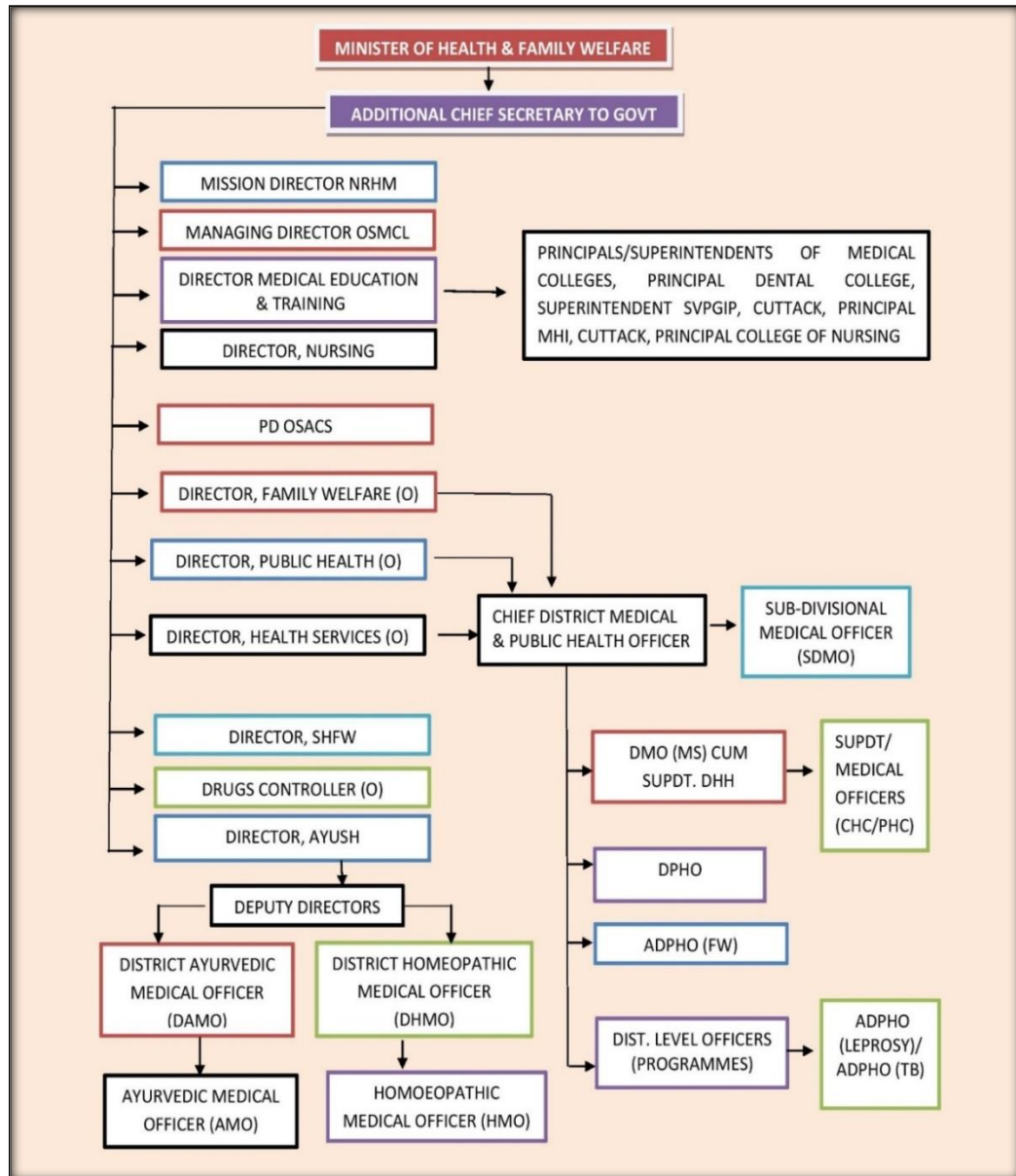
Sl. No.	Name of the medical college & hospitals	Year of establishment	Type of institute
1.	Srirama Chandra Bhanja Medical College and Hospital, Cuttack	1944	State Government
2.	Maharaja Krishna Chandra Gajapati Medical College & Hospital, Berhampur	1962	State Government
3.	Veer Surendra Sai Institute of Medical Sciences and Research (VIMSAR), Burla	1959	State Government
4.	Pandit Raghunath Murmu Medical College, Baripada	2017	State Government
5.	Saheed Laxman Nayak Medical College and Hospital, Koraput	2017	State Government
6.	Fakir Mohan Medical College and Hospital, Balasore	2018	State Government
7.	Bhima Bhoi Medical College and Hospital, Bolangir	2018	State Government
8.	Shri Jagannath Medical College and Hospital, Puri	2021	State Government
9.	Dharanidhar Medical College and Hospital, Keonjhar	2022	State Government
10.	Government Medical College and Hospital, Sundargarh	2022	State Government
11.	Government Medical College and Hospital, Kalahandi	2023	State Government
12.	Institute of Medical Science, Bhubaneswar	2007	Private
13.	Kalinga Institute of Medical Science, Bhubaneswar	2007	Private
14.	Hi-Tech Medical College and Hospital, Bhubaneswar	2005	Private
15.	Hi-Tech Medical College and Hospital, Rourkela	2012	Private
16.	All India Institute of Medical Science, Bhubaneswar	2012	Central Government

(Source: Data obtained from DMET, Odisha)

Appendix 1.2

(Refer Paragraph 1.2)

Organisational structure of the Health and Family Welfare Department



Appendix 1.3

(Refer Paragraph 1.6)

Sampling of units for the Performance Audit

Level of Offices	Total Units	Units selected	Name of the auditee units selected	Remarks
State level offices (Department, Directorates and Controlling offices)	9	9	H&FW Department, Director of Health Services, Director of Family Welfare, Director of Public Health, Director of Medical Education and Training, Director of Nursing, Odisha State Medical Corporation Limited, Drug Controller, Odisha; National Health Mission	All the State level offices selected
Government Medical College Hospitals	7	2	1. MKCG Medical College and Hospital, Berhampur 2. PRM Medical College and Hospital, Baripada (Mayurbhanj)	One out of three Old MCHs and one out of four new MCHs selected, using random sampling method.
Districts (for District Headquarter Hospitals)	30	7	Central Division: (1) Bhadrak, (2) Puri Northern Division: (3) Dhenkanal, (4) Sundargarh Southern Division: (5) Kandhamal, (6) Nabarangpur (7) Nuapada	2 Districts out of 10 selected, each from Central and Northern Division Districts, and 3 Districts out of 10 selected from Southern Division Districts, using random sampling method
Block Level (CHCs)	374	14	Bhadrak: (1) Basudevpur, (2) Barapada; Puri: (3) Nimapara, (4) Bangurigaon; Dhenkanal: (5) Khajuriakata, (6) Sriramchandrapur, Sundargarh: (7) Lahuniapara, (8) Kuarmunda; Kandhamal: (9) Raikia, (10) Tikabali, Nabarangpur: (11) Kosagumuda, (12) Papadahandi, Nuapada: (13) Khariar Road, (14) Komana	Two CHCs under each sampled DHH selected using random sampling method.
Primary Health Centres	1375	14	Selected at field level	One, under each sampled CHC selected on judgmental basis.

Appendix 2.1
(Refer Paragraph 2.1)

District-wise sanctioned strength and persons-in-position of doctors, nurses and paramedics

Sl. No.	Districts	Specialist Doctors				Doctors				Staff Nurses/ Nursing officers				Paramedics			
		Sanctioned Strength	Persons-in-position	Shortage	percentage of shortage	Sanctioned Strength	Persons-in-position	Shortage	percentage of shortage	Sanctioned Strength	Persons-in-position	Shortage	percentage of shortage	Sanctioned Strength	Persons-in-position	Shortage	percentage of shortage
1	Angul	86	48	38	44	242	128	114	47	398	283	115	29	158	104	54	34
2	Balasore	108	60	48	44	373	239	134	36	772	563	209	27	309	230	79	26
3	Bargarh	86	37	49	57	301	144	157	52	393	300	93	24	168	103	65	39
4	Bhadrak	57	43	14	25	215	133	82	38	337	245	92	27	129	95	34	26
5	Bolangir	104	50	54	52	338	204	134	40	516	396	120	23	309	185	124	40
6	Boudh	43	19	24	56	120	68	52	43	253	95	158	62	59	39	20	34
7	Cuttack	125	81	44	35	411	334	77	19	1973	1567	406	21	581	443	138	24
8	Deogarh	39	13	26	67	106	35	71	67	134	76	58	43	53	26	27	51
9	Dhenkanal	81	41	40	49	244	116	128	52	346	205	141	41	152	95	57	38
10	Gajapati	56	37	19	34	177	155	22	12	229	159	70	31	92	50	42	46
11	Ganjam	161	90	71	44	567	322	245	43	1541	1134	407	26	481	293	188	39
12	Jagatsinghpur	58	36	22	38	220	150	70	32	499	159	340	68	125	80	45	36
13	Jajpur	74	41	33	45	264	196	68	26	472	344	128	27	170	115	55	32
14	Jharsuguda	45	32	13	29	143	97	46	32	290	141	149	51	80	61	19	24
15	Kalahandi	106	42	64	60	339	199	140	41	452	362	90	20	185	124	61	33
16	Kandhamal	95	30	65	68	285	222	63	22	478	376	102	21	168	96	72	43
17	Kendrapara	57	28	29	51	224	147	77	34	306	200	106	35	147	111	36	24
18	Keonjhar	112	64	48	43	359	187	172	48	587	418	169	29	224	162	62	28
19	Khurda	157	133	24	15	422	372	50	12	649	516	133	20	274	210	64	23
20	Koraput	106	23	83	78	338	227	111	33	1110	496	614	55	288	178	110	38
21	Malkangiri	55	19	36	65	197	120	77	39	294	207	87	30	119	86	33	28
22	Mayurbhanj	175	61	114	65	549	281	268	49	1087	782	305	28	419	296	123	29
23	Nabarangpur	58	22	36	62	253	89	164	65	330	243	87	26	135	85	50	37

Sl. No.	Districts	Specialist Doctors				Doctors				Staff Nurses/ Nursing officers				Paramedics			
		Sanctioned Strength	Persons-in-position	Shortage	percentage of shortage	Sanctioned Strength	Persons-in-position	Shortage	percentage of shortage	Sanctioned Strength	Persons-in-position	Shortage	percentage of shortage	Sanctioned Strength	Persons-in-position	Shortage	percentage of shortage
24	Nayagarh	79	32	47	59	248	102	146	59	323	227	96	30	145	86	59	41
25	Nuapada	48	28	20	42	154	82	72	47	219	185	34	16	83	55	28	34
26	Puri	98	50	48	49	320	209	111	35	456	333	123	27	189	139	50	26
27	Rayagada	77	24	53	69	249	175	74	30	368	254	114	31	153	88	65	42
28	Sambalpur	85	54	31	36	257	136	121	47	1268	1066	202	16	309	238	71	23
29	Subarnapur	53	45	8	15	152	78	74	49	211	146	65	31	89	50	39	44
30	Sundargarh	155	67	88	57	471	209	262	56	636	455	181	28	272	206	66	24
31.	State Headquarter	-	-	-	-	191	62	129	68	-	-	-	-	-	-	-	-
32.	Other sectors	-	-	-	-	21	17	4	19	-	-	-	-	-	-	-	-
Total		2,639	1,350	1,289	49	8,750	5,235	3,515	40	16,927	11,933	4,994	30	6,065	4,129	1,936	32

(Source: Data furnished by DHS, Odisha)

Appendix 2.2
(Refer Paragraph 2.1.1, Paragraph 2.1.3 and Paragraph 2.1.4.1)
Manpower availability in the DHHs of the State, as on 31 March 2022

Sl. No.	DHHs	Specialists		Excess (+)/ Shortages (-)	Doctors		Excess (+)/ Shortages (-)	Nurse		Excess (+)/ Shortages (-)	Paramedics*		Excess (+)/ Shortages (-)
		SS	PIP		SS	PIP		SS	PIP		SS	PIP	
1	Angul	20	16	-4	50	32	-18	246	106	-140	30	46	16
2	Balasore	30	22	-8	88	56	-32	61	61	0	11	11	0
3	Bargarh	20	10	-10	63	44	-19	91	88	-3	26	21	-5
4	Bhadrak	27	21	-6	76	46	-30	107	58	-49	20	16	-4
5	Bolangir	25	14	-11	61	37	-24	90	57	-33	26	14	-12
6	Boudh	23	13	-10	47	22	-25	97	16	-81	18	13	-5
7	Cuttack	20	19	-1	59	58	-1	49	35	-14	30	21	-9
8	Deogarh	23	9	-14	48	17	-31	31	29	-2	0	0	0
9	Dhenkanal	22	16	-6	51	28	-23	94	80	-14	32	21	-11
10	Gajapati	24	14	-10	60	25	-35	160	81	-79	24	17	-7
11	Ganjam	20	13	-7	77	42	-35	56	53	-3	30	20	-10
12	Jagatsinghpur	20	16	-4	58	42	-16	80	43	-37	25	21	-4
13	Jajpur	24	18	-6	69	44	-25	182	131	-51	31	22	-9
14	Jharsuguda	21	18	-3	51	43	-8	123	67	-56	29	37	8
15	Kalahandi	23	14	-9	75	37	-38	141	116	-25	31	29	-2
16	Kandhamal	31	17	-14	61	28	-33	165	161	-4	30	16	-14
17	Kendrapara	22	10	-12	62	34	-28	59	30	-29	33	24	-9
18	Keonjhar	24	18	-6	65	46	-19	112	88	-24	38	23	-15
19	Khurda	27	22	-5	73	51	-22	189	95	-94	34	30	-4
20	Koraput	31	10	-21	83	29	-54	115	61	-54	37	29	-8
21	Malkangiri	23	8	-15	59	32	-27	148	100	-48	28	16	-12
22	Mayurbhanj	21	16	-5	80	45	-35	85	58	-27	35	26	-9
23	Nabarangpur	23	11	-12	71	21	-50	95	95	0	17	14	-3
24	Nayagarh	30	17	-13	52	27	-25	65	16	-49	22	15	-7
25	Nuapada	23	11	-12	56	23	-33	90	90	0	22	19	-3
26	Puri	20	15	-5	81	55	-26	149	99	-50	37	35	-2
27	Rayagada	23	13	-10	49	30	-19	142	77	-65	24	18	-6
28	Sambalpur	21	15	-6	50	35	-15	154	129	-25	28	24	-4
29	Subarnapur	22	10	-12	50	24	-26	81	59	-22	26	16	-10
30	Sundargarh	22	14	-8	64	36	-28	139	103	-36	37	20	-17
31	Capital Hospital	69	57	-12	123	104	-19	158	138	-20	66	48	-18
32	RGH Rourkela	50	26	-24	89	41	-48	123	153	30	29	49	20
	TOTAL	824	523	-301	2,101	1,234	-867	3,677	2,573	-1,104	906	731	-175

(Source: Data obtained from DHS & DHHs)

*Paramedics include Pharmacists, Lab Technicians and Radiographers

Appendix 2.3
(Refer Paragraph 2.1.2)
Department-wise availability of specialists in the DHHs of the State, as on 31 March 2022

Sl. No.	DHHs	Medicine		Surgery		O&G		Paediatric		Anaesthesia		Ophthalmology		Orthopaedic		Radiology		Pathology		ENT		TB&CD		Dermatology		Psychiatric		Others			
		SS	PIP	SS	PIP	SS	PIP	SS	PIP	SS	PIP	SS	PIP	SS	PIP	SS	PIP	SS	PIP	SS	PIP	SS	PIP	SS	PIP	SS	PIP	SS	PIP		
1	Angul	2	2	2	2	2	1	3	2	2	2	2	2	1	1	1	0	1	0	1	1	1	1	1	1	1	1	1	0	0	
2	Balasore	2	2	5	3	3	2	4	4	5	4	2	1	2	1	1	0	1	1	1	0	1	1	1	1	1	1	1	1	1	
3	Bolangir	2	1	2	2	5	3	4	1	2	1	2	1	1	0	1	1	2	1	1	1	1	1	1	1	0	1	1	0	0	
4	Bargarh	2	1	2	2	2	1	3	2	2	0	2	0	1	1	1	1	1	0	1	1	1	0	1	0	1	1	0	0		
5	Bhadrak	2	1	5	5	3	3	3	2	4	1	2	2	2	2	1	1	1	1	1	1	1	1	1	1	0	1	1	0	0	
6	Boudh	2	2	2	2	5	2	3	1	2	1	2	1	1	0	1	1	1	0	1	1	1	1	1	1	0	1	1	0	0	
7	Cuttack	2	2	2	2	3	3	2	2	2	2	2	2	1	0	1	1	1	1	1	1	1	1	1	1	1	1	1	0	0	
8	Deogarh	2	2	2	1	5	3	3	0	2	1	2	0	1	0	1	1	1	1	1	0	1	0	1	0	1	0	0	0	0	
9	Dhenkanal	2	1	2	1	3	2	3	2	2	2	2	2	1	1	1	1	2	1	1	1	1	0	1	1	1	1	0	0	0	
10	Gajapati	2	1	2	2	5	3	4	2	2	1	2	0	1	1	1	1	0	1	1	1	1	1	1	0	1	1	1	0	0	
11	Ganjam	2	1	2	2	3	1	2	1	2	2	2	2	1	1	1	0	1	0	1	1	1	1	1	1	1	1	1	0	0	
12	Jagatsinghpur	2	2	2	2	3	2	3	2	2	2	2	2	1	0	1	1	1	1	1	1	1	0	0	0	1	1	0	0	0	
13	Jajpur	2	2	2	0	3	2	3	3	2	2	3	2	1	0	1	1	1	1	1	1	1	1	1	1	1	0	2	2	2	
14	Jharsuguda	2	2	2	2	3	3	3	3	2	0	2	2	1	1	1	1	1	0	1	1	1	1	1	1	1	1	1	0	0	
15	Kalahandi	2	1	2	2	3	1	4	3	2	0	2	1	1	1	1	1	1	0	1	1	1	1	1	1	1	1	0	1	1	
16	Kandhamal	3	2	3	3	5	2	8	2	2	2	2	1	1	0	1	0	2	1	1	1	1	1	1	1	1	1	1	0	0	
17	Kendrapara	2	1	2	0	3	3	3	1	2	2	2	0	1	1	1	0	2	1	1	1	1	0	1	0	1	0	0	0	0	
18	Keonjhar	2	2	2	2	5	3	4	2	2	2	2	1	1	1	1	1	1	1	1	1	1	1	1	0	1	1	0	0	0	
19	Khurda	2	0	5	4	3	3	3	3	4	4	2	2	2	1	1	1	1	1	1	1	1	1	1	0	1	1	0	0	0	
20	Koraput	2	1	2	1	5	3	9	3	2	0	2	1	1	0	1	0	1	0	1	0	1	0	1	1	1	1	0	2	0	
21	Malkangiri	2	1	2	2	5	3	3	0	2	0	2	0	1	1	1	0	1	0	1	0	1	0	1	0	1	0	1	0	0	
22	Mayurbhanj	2	2	2	2	3	3	5	1	1	1	1	1	1	1	1	1	1	0	1	1	1	1	1	1	1	1	1	0	0	
23	Nabarangpur	2	1	2	1	5	2	3	2	2	0	2	2	1	1	1	1	1	0	1	0	1	0	1	0	1	0	1	0	0	
24	Nayagarh	3	3	3	3	4	2	3	3	3	2	3	2	2	0	2	1	2	0	1	1	2	0	1	0	1	0	1	0	0	0
25	Nuapada	2	1	2	1	5	1	3	2	2	0	2	2	1	1	1	1	1	1	1	1	1	0	1	0	1	0	1	0	0	0
26	Puri	2	2	2	2	3	2	2	1	2	1	2	1	1	1	1	1	1	1	1	1	1	1	1	1	1	1	0	0	0	0
27	Rayagada	2	2	2	2	5	2	3	1	2	2	2	2	1	0	1	0	1	0	1	0	1	1	1	0	1	1	0	0	0	
28	Sambalpur	2	2	2	2	3	3	3	2	2	1	2	2	1	0	1	1	1	1	1	0	1	0	1	0	1	0	1	0	0	0
29	Subarnapur	2	1	2	2	5	1	2	0	2	1	2	1	1	0	1	1	1	0	1	1	1	1	1	1	0	1	1	0	0	0

Sl. No.	DHHS	Medicine		Surgery		O&G		Paediatric		Anaesthesia		Ophthalmology		Orthopaedic		Radiology		Pathology		ENT		TB&CD		Dermatology		Psychiatric		Others	
		SS	PIP	SS	PIP	SS	PIP	SS	PIP	SS	PIP	SS	PIP	SS	PIP	SS	PIP	SS	PIP	SS	PIP	SS	PIP	SS	PIP	SS	PIP	SS	PIP
30	Sundargarh	2	2	2	2	5	3	2	1	2	2	2	1	1	0	1	1	1	0	1	1	1	1	1	0	1	0	0	0
31	Capital Hospital, BBSR	7	6	5	5	8	8	14	4	5	5	4	4	3	3	3	3	3	3	2	2	3	3	3	3	2	2	7	6
32	RGH, Rourkela	4	2	6	1	7	6	12	5	8	5	3	2	2	1	1	1	1	1	2	1	1	0	1	0	1	1	1	0
Total		73	54	82	65	130	82	129	63	80	51	68	44	39	22	35	26	39	19	34	26	35	22	33	15	33	24	14	10

(Source: Data furnished by DHS, Odisha)

SS: Sanctioned Strength and PIP: Persons-in-position

Appendix 2.4
(Refer Paragraph 2.1.3)
Availability of Manpower in the CHCs of the State, as on 31 March 2022

Sl. No.	Districts	Number of CHCs	Medicine		Surgery		Paediatric		O&G		GDMO		Doctors		Dental		Ayush doctors		Emergency doctors		Nurses		Paramedics	
			SS	PIP	SS	PIP	SS	PIP	SS	PIP	SS	PIP	SS	PIP	SS	PIP	SS	PIP	SS	M	PIP	IP	SS	PIP
1	Angul	9	9	1	9	1	9	2	9	5	19	1	44	21	9	9	8	8	0	0	144	84	51	39
2	Bolangir	15	15	2	15	0	15	1	15	4	4	3	75	26	15	9	15	15	0	0	158	110	86	58
3	Balasore	17	17	2	17	1	17	4	17	11	2	0	85	55	17	14	13	13	0	0	131	97	83	55
4	Baragarh	16	14	2	15	3	15	0	15	1	0	0	85	44	15	10	15	11	0	0	112	97	66	35
5	Bhadrak	7	7	1	7	2	7	2	7	3	0	0	35	20	7	7	7	7	0	0	25	25	38	29
6	Boudh	5	5	1	5	2	5	2	5	2	0	0	25	16	5	2	5	5	0	0	30	16	25	15
7	Cuttack	21	20	2	20	3	20	3	20	10	3	1	0	40	18	18	14	13	0	0	153	97	84	66
8	Deogarh	4	4	0	4	0	4	0	4	0	0	0	0	0	3	1	3	3	0	0	24	12	20	6
9	Dhenkanal	10	8	0	8	0	8	0	8	2	0	0	40	35	8	8	8	8	0	0	117	44	46	21
10	Gajapati	8	8	0	8	0	8	0	8	0	0	0	73	57	8	5	25	12	0	0	60	31	44	25
11	Ganjam	28	28	1	28	6	28	4	28	4	140	77	0	0	28	19	23	21	0	0	201	171	143	92
12	Jagatsinghpur	11	9	1	9	1	9	3	9	2	65	30	14	9	9	8	11	11	0	0	178	126	93	55
13	Jajpur	12	12	5	12	5	12	4	12	6	1	1	60	47	12	10	10	10	0	0	102	89	61	38
14	Jharsuguda	6	6	4	6	4	6	4	6	3	0	0	30	11	6	4	5	4	0	0	54	28	23	22
15	Kalahandi	17	16	2	17	7	16	2	16	4	0	0	119	69	16	7	17	5	0	0	132	120	66	41
16	Kandhamal	14	14	0	14	0	14	0	14	0	0	0	96	67	14	6	0	0	0	0	149	129	90	56
17	Kendrapara	8	8	0	8	2	8	4	8	2	0	0	95	63	8	8	8	8	0	0	198	133	73	51
18	Keonjhar	17	17	12	17	9	17	7	17	8	0	0	85	26	17	10	13	13	0	0	202	149	95	56
19	Khurda	16	15	6	15	3	15	4	16	9	1	1	64	58	14	14	14	14	0	0	128	118	82	49
20	Koraput	16	16	2	16	1	16	1	16	2	80	74	0	0	16	7	16	4	0	0	133	96	96	62
21	Malkangiri	6	6	0	6	0	6	0	6	0	0	0	30	27	6	2	0	0	0	0	44	27	34	20
22	Mayurbhanj	28	28	2	28	3	28	7	28	8	0	0	140	82	28	15	24	23	0	0	196	110	123	104
23	Nabarangpur	10	10	0	10	0	10	0	10	1	0	0	70	37	10	5	10	10	0	0	120	6	32	21
24	Nayagarh	12	12	1	12	3	12	0	12	3	2	2	60	34	12	12	0	8	0	0	74	55	45	34
25	Nuapada	5	5	3	5	3	5	2	5	3	0	0	34	10	5	2	1	1	0	0	53	47	25	17
26	Puri	16	16	6	16	8	16	9	16	8	13	7	11	2	15	14	14	10	0	0	121	62	65	44
27	Rayagada	11	11	0	11	0	11	0	11	0	1	0	55	49	11	3	11	7	0	0	69	62	52	26
28	Sambalpur	11	11	0	11	0	11	2	11	0	0	0	55	31	11	6	9	6	11	11	78	60	28	25
29	Subarnapur	5	5	1	5	0	5	1	5	2	0	0	25	11	5	0	5	5	0	0	89	58	26	17
30	Sundargarh	21	21	2	21	1	23	6	23	5	104	52	0	0	22	21	17	17	0	0	222	108	114	65
	TOTAL	382	373	59	375	68	376	74	377	108	435	249	1,505	947	370	256	321	272	11	11	3,497	2,367	1,909	1,244

(Source: Data obtained from the DHHs) (SS of GDMOs and Doctors may be seen together for the purpose of comparison across districts, as their duties are broadly the same)

Appendix 2.5
(Refer Paragraph 2.1.3 and Paragraph 7.2.1)
Availability of Manpower in the PHCs of the State, as on 31 March 2022

Sl. No.	District	Number of PHCs	Sanctioned				In-position			
			Doctors	Nurses	Paramedics	Others	Doctors	Nurses	Paramedics	Others
1	Angul	32	32	9	48	77	18	16	46	105
2	Bolangir	46	46	136	110	93	33	14	96	56
3	Balasore	74	73	174	179	50	49	13	119	91
4	Bargarh	49	49	5	72	50	29	2	52	37
5	Bhadrak	53	53	15	87	49	25	8	71	46
6	Boudh	12	11	6	22	15	9	1	12	11
7	Cuttack	70	70	140	140	140	63	66	108	99
8	Deogarh	7	7	21	7	13	3	3	5	12
9	Dhenkanal	34	34	102	66	86	18	21	46	87
10	Gajapati	21	23	60	60	38	19	47	57	31
11	Ganjam	101	101	289	260	0	34	136	175	0
12	Jagatsinghpur	36	36	4	84	95	15	2	63	88
13	Jajpur	59	59	177	102	90	53	29	60	65
14	Jharsuguda	20	20	58	39	42	11	25	47	42
15	Kalahandi	44	44	36	71	51	39	20	83	62
16	Kandhamal	37	43	152	116	97	39	46	83	53
17	Kendrapara	46	46	25	46	45	44	8	33	41
18	Keonjhar	63	63	63	126	126	39	62	126	126
19	Khurda	67	67	115	121	91	59	65	108	278
20	Koraput	52	54	58	169	52	45	28	107	8
21	Malkangiri	25	25	33	31	29	23	17	31	29
22	Mayurbhanj	85	87	118	164	159	55	16	140	258
23	Nabarangpur	41	40	68	70	49	27	8	77	38
24	Nayagarh	38	38	8	72	62	53	3	59	54
25	Nuapada	17	20	23	40	12	18	18	30	15
26	Puri	49	56	27	147	104	37	15	115	89
27	Rayagada	39	37	108	68	57	24	0	48	31
28	Sambalpur	37	37	0	37	70	26	19	74	118
29	Subarnapur	18	18	54	18	18	14	0	24	18
30	Sundargarh	68	68	72	143	76	57	45	125	63
	TOTAL	1,340	1,357	2,156	2,715	1,936	978	753	2,220	2,051

(Source: Data obtained from H&FW Department)

Appendix 2.6
(Refer Paragraph 2.1.5)
Availability of Doctors in the test-checked CHCs

Sl. No.	Posts	Bhadrak						Sundargarh					
		CHC, Basudevpur			CHC, Barapada			CHC, Lahunipara			CHC, Kuarmunda		
		Sanctioned position	Persons-in-position	Vacant Position	Sanctioned position	Persons-in-position	Vacant Position	Sanctioned position	Persons-in-position	Vacant Position	Sanctioned position	Persons-in-position	Vacant Position
1	Medical Officer/ Superintendent	1	0	1	1	1	0	1	0	1	1	1	0
2	Public Health Specialist	0	0	0	0	0	0	0	0	0	0	0	0
3	Gen. Surgeon	1	1	0	0	0	0	0	0	0	0	0	0
4	Physician/ Medicine specialist	0	0	0	0	0	0	0	0	0	0	0	0
5	O&G specialist	1	1	0	1	0	1	1	1	0	1	0	1
6	Paediatrician	1	1	0	1	0	1	1	0	1	1	1	0
7	Anaesthetist	0	0	0	0	0	0	0	0	0	0	0	0
8	GDMO	0	0	0	1	1	0	5	4	1	2	2	0
9	MO (Ayush)	1	1	0	1	1	0	1	1	0	1	1	0
10	Dental Surgeon	1	1	0	1	0	1	1	1	0	1	1	0
	Total	6	5	1	6	3	3	10	7	3	7	6	1

Sl. No.	Posts	Dhenkanal						Kandhamal					
		CHC, Khajuriakata			CHC, Sriramchandrapur			CHC, Raikia			CHC, Tikabali		
		Sanctioned strength	Persons-in-position	Vacant Position	Sanctioned strength	Persons-in-position	Vacant Position	Sanctioned strength	Persons-in-position	Vacant Position	Sanctioned strength	Sanctioned strength	Vacant Position
1	Medical Officer/ Superintendent	1	0	1	1	0	1	1	0	1	1	1	0
2	Public Health Specialist	0	0	0	0	0	0	1	1	0	1	1	0
3	Gen. Surgeon	0	0	0	0	0	0	1	0	1	1	0	1
4	Physician/ Medicine Specialist	0	0	0	0	0	0	0	0	0	1	0	1
5	O&G specialist	1	0	1	1	0	1	1	0	1	1	0	1

Sl. No.	Posts	Dhenkanal						Kandhamal					
		CHC, Khajuriakata			CHC, Sriramchandrapur			CHC, Raikia			CHC, Tikabali		
		Sanctioned strength	Persons-in-position	Vacant Position	Sanctioned strength	Persons-in-position	Vacant Position	Sanctioned strength	Persons-in-position	Vacant Position	Sanctioned strength	Sanctioned strength	Vacant Position
6	Paediatrician	1	0	1	1	0	1	1	0	1	1	0	1
7	Anaesthetist	0	0	0	0	0	0	1	0	1	0	0	0
8	GDMO	3	2	1	2	1	1	7	7	0	7	7	0
9	MO (Ayush)	1	1	0	1	1	0	0	0	0	0	0	0
10	Dental Surgeon	1	1	0	1	1	0	1	1	0	0	0	0
	Total	8	4	4	7	3	4	14	9	5	13	9	4

Sl. No.	Posts	Nuapada						Nabarangpur					
		CHC, Khariar Road			CHC, Komna			CHC, Kosagumuda			CHC, Papadahandi		
		Sanctioned strength	Persons-in-position	Vacant Position	Sanctioned strength	Persons-in-position	Vacant Position	Sanctioned strength	Persons-in-position	Vacant Position	Sanctioned strength	Persons-in-position	Vacant Position
1	Medical Officer/ Superintendent	1	1	0	1	0	1	2	0	2	8	7	1
2	Public Health Specialist	1	0	1	1	0	1	0	0	0	0	0	0
3	Gen. Surgeon	1	0	1	1	1	0	1	0	1	0	0	0
4	Physician/ Medicine Specialist	1	0	1	1	1	0	0	0	0	0	0	0
5	O&G specialist	1	1	0	1	0	1	1	0	1	1	1	0
6	Paediatrician	1	1	0	1	1	0	1	0	1	1	1	0
7	Anaesthetist	0	0	0	0	0	0	0	0	0	0	0	0
8	GDMO	8	5	3	5	1	4	5	1	4	0	0	0
9	MO (Ayush)	NA	0	0	NA	0	0	1	0	1	1	1	0
10	Dental Surgeon	1	1	0	1	1	0	1	1	0	1	1	0
	Total	15	9	6	12	5	7	12	2	10	12	11	1

Sl. No.	Posts	Puri					
		CHC, Nimapara			CHC, Bangurigaon		
		Sanctioned strength	Persons-in-position	Vacant Position	Sanctioned strength	Persons-in-position	Vacant Position
1	Medical Officer/ Superintendent	2	2	0	11	6	5
2	Public Health Specialist	0	0	0	0	0	0
3	Gen. Surgeon	2	2	0	0	0	0
4	Physician	0	0	0	1	0	1
5	O&G specialist	1	1	0	1	0	1
6	Paediatrician	1	1	0	1	0	1
7	Anaesthetist	0	0	0	0	0	0
8	GDMO	0	0	0	0	0	0
9	MO (Ayush)	0	0	0	0	0	0
10	Dental Surgeon	1	1	0	1	1	0
	Total	7	7	0	15	7	8

(Source: Data supplied by the test-checked CHCs)

Appendix 2.7
(Refer Paragraph 2.1.7)
Availability of Manpower in the SCs of the State, as on 31 March 2022

Sl. No.	Districts	Number of SCs sanctioned for the district	Sanctioned strength		Persons-in-Position	
			ANM (Health worker Female)	Health worker (Male)	ANM (Health worker Female)	Health worker (Male)
1	Angul	166	254	115	236	100
2	Balasore	275	275	214	262	85
3	Bargarh	204	204	153	204	91
4	Bhadrak	178	178	163	146	116
5	Bolangir	226	333	176	322	165
6	Boudh	67	67	47	67	35
7	Cuttack	332	326	285	314	205
8	Deogarh	42	65	35	47	27
9	Dhenkanal	167	198	129	177	97
10	Gajapati	133	196	122	184	90
11	Ganjam	460	460	349	430	131
12	Jagatsinghpur	199	199	142	166	93
13	Jajpur	260	260	209	227	145
14	Jharsuguda	66	66	52	63	51
15	Kalahandi	241	335	185	334	172
16	Kandhamal	172	172	141	161	99
17	Kendrapara	227	227	180	191	156
18	Keonjhar	351	419	245	397	233
19	Khurda	202	202	190	185	160
20	Koraput	307	375	214	375	158
21	Malkangiri	158	158	99	158	85
22	Mayurbhanj	589	602	309	502	199
23	Nabarangpur	289	289	167	304	114
24	Nayagarh	166	166	145	166	127
25	Nuapada	96	96	96	112	90
26	Puri	241	241	208	193	112
27	Rayagada	235	235	153	217	108
28	Sambalpur	160	160	120	133	8
29	Subarnapur	89	89	69	81	46
30	Sundargarh	390	390	241	362	201
	TOTAL	6688	7237	4953	6716	3499

(Source: Data furnished by NHM, Odisha and the DHHs)

Appendix 2.8
(Refer Paragraph 2.1.8)
Availability of human resources under AYUSH (Ayurvedic)

Sl. No.	Districts	Number of Government Ayurvedic Dispensaries	Ayurvedic Medical Officer				Ayurvedic Assistant			
			Sanctioned Strength	Persons-in-position	Shortage	%age of shortage	Sanctioned Strength	Persons-in-position	Shortage	% age of shortage
1	Angul	16	16	14	2	13	16	13	3	19
2	Balasore	23	23	21	2	9	23	20	3	13
3	Bargarh	22	22	18	4	18	22	14	8	36
4	Bhadrak	21	21	17	4	19	21	15	6	29
5	Bolangir	33	33	28	5	15	33	17	16	48
6	Boudh	10	10	8	2	20	10	5	5	50
7	Cuttack	21	21	20	1	5	21	15	6	29
8	Deogarh	8	8	6	2	25	8	5	3	38
9	Dhenkanal	22	22	18	4	18	22	17	5	23
10	Gajapati	7	7	4	3	43	7	5	2	29
11	Ganjam	48	48	37	11	23	48	38	10	21
12	Jagatsinghpur	11	11	10	1	9	11	9	2	18
13	Jajpur	25	25	22	3	12	25	18	7	28
14	Jharsuguda	9	9	7	2	22	9	7	2	22
15	Kalahandi	20	20	19	1	5	20	8	12	60
16	Kandhamal	17	17	13	4	24	17	8	9	53
17	Kendrapara	15	15	13	2	13	15	11	4	27
18	Keonjhar	48	48	42	6	13	48	35	13	27
19	Khurda	22	22	20	2	9	22	15	7	32
20	Koraput	18	18	13	5	28	18	7	11	61
21	Malkangiri	7	7	6	1	14	7	4	3	43
22	Mayurbhanj	45	45	37	8	18	45	30	15	33
23	Nabarangpur	22	22	16	6	27	22	8	14	64
24	Nayagarh	15	15	12	3	20	15	13	2	13
25	Nuapada	10	10	9	1	10	10	3	7	70

Sl. No.	Districts	Number of Government Ayurvedic Dispensaries	Ayurvedic Medical Officer				Ayurvedic Assistant			
			Sanctioned Strength	Persons-in-position	Shortage	%age of shortage	Sanctioned Strength	Persons-in-position	Shortage	% age of shortage
26	Puri	23	23	19	4	17	23	14	9	39
27	Rayagada	20	20	17	3	15	20	5	15	75
28	Sambalpur	15	15	13	2	13	15	8	7	47
29	Subarnapur	14	14	12	2	14	14	6	8	57
30	Sundargarh	33	33	25	8	24	33	20	13	39
Total		620	620	516	104	17	620	393	227	37

(Source: Data obtained from Directorate of AYUSH)

Appendix 2.9
(Refer Paragraph 2.1.8)
Availability of human resources under AYUSH (Homeopathy)

Sl. No.	Districts	Number of Government Homeopathy Dispensaries	Homoeopathic Medical Officer				Homeopathic Assistant			
			Sanctioned Strength	Persons-in-position	Shortage	%age of shortage	Sanctioned Strength	Persons-in-position	Shortage	%age of shortage
1	Angul	19	19	19	0	0	19	11	8	42
2	Balasore	32	32	31	1	3	32	22	10	31
3	Bargarh	17	17	15	2	12	17	12	5	29
4	Bhadrak	25	25	21	4	16	25	16	9	36
5	Bolangir	18	18	16	2	11	18	12	6	33
6	Boudh	4	4	3	1	25	4	1	3	75
7	Cuttack	29	29	25	4	14	29	21	8	28
8	Deogarh	2	2	1	1	50	2	2	0	0
9	Dhenkanal	19	19	19	0	0	19	11	8	42
10	Gajapati	6	6	4	2	33	6	1	5	83
11	Ganjam	43	43	39	4	9	43	28	15	35
12	Jagatsinghpur	17	17	15	2	12	17	12	5	29
13	Jajpur	21	21	18	3	14	21	12	9	43
14	Jharsuguda	8	8	7	1	13	8	5	3	38
15	Kalahandi	18	18	11	7	39	18	10	8	44
16	Kandhamal	19	19	11	8	42	19	3	16	84
17	Kendrapara	19	19	15	4	21	19	14	5	26
18	Keonjhar	34	34	29	5	15	34	25	9	26
19	Khurda	26	26	26	0	0	27	17	10	37
20	Koraput	18	18	8	10	56	18	7	11	61
21	Malkangiri	8	8	5	3	38	8	3	5	63
22	Mayurbhanj	44	44	33	11	25	43	34	9	21
23	Nabarangpur	16	16	6	10	63	16	6	10	63
24	Nayagarh	20	20	18	2	10	21	14	7	33
25	Nuapada	5	5	3	2	40	5	1	4	80

Sl. No.	Districts	Number of Government Homeopathy Dispensaries	Homoeopathic Medical Officer				Homeopathic Assistant			
			Sanctioned Strength	Persons-in-position	Shortage	%age of shortage	Sanctioned Strength	Persons-in-position	Shortage	%age of shortage
26	Puri	16	16	15	1	6	16	9	7	44
27	Rayagada	14	14	10	4	29	14	5	9	64
28	Sambalpur	16	16	14	2	13	15	10	5	33
29	Subarnapur	5	5	4	1	20	5	4	1	20
30	Sundargarh	24	24	20	4	17	24	18	6	25
Total		562	562	461	101	18	562	346	216	38

(Source: Data obtained from Directorate of AYUSH)

Appendix 2.10
(Refer Paragraph 2.1.8)
Availability of human resources under AYUSH (UNANI)

Sl. No.	Districts	Number of Government UNANI Dispensaries	Unani Medical Officer				Unani Assistant			
			Sanctioned Strength	Persons-in-position	Shortage	%age of shortage	Sanctioned Strength	Persons-in-position	Shortage	%age of shortage
1	Angul	0	0	0	0	0	0	0	0	0
2	Balasore	2	2	1	1	50	2	0	2	100
3	Bargarh	0	0	0	0	0	0	0	0	0
4	Bhadrak	2	2	1	1	50	2	2	0	0
5	Bolangir	0	0	0	0	0	0	0	0	0
6	Boudh	0	0	0	0	0	0	0	0	0
7	Cuttack	2	2	1	1	50	2	0	2	100
8	Deogarh	0	0	0	0	0	0	0	0	0
9	Dhenkanal	0	0	0	0	0	0	0	0	0
10	Gajapati	0	0	0	0	0	0	0	0	0
11	Ganjam	0	0	0	0	0	0	0	0	0
12	Jagatsinghpur	0	0	0	0	0	0	0	0	0
13	Jajpur	0	0	0	0	0	0	0	0	0
14	Jharsuguda	0	0	0	0	0	0	0	0	0
15	Kalahandi	0	0	0	0	0	0	0	0	0
16	Kandhamal	0	0	0	0	0	0	0	0	0
17	Kendrapara	1	1	0	1	100	1	0	1	100
18	Keonjhar	1	1	0	1	100	1	0	1	100
19	Khurda	0	0	0	0	0	0	0	0	0
20	Koraput	0	0	0	0	0	0	0	0	0
21	Malkangiri	0	0	0	0	0	0	0	0	0
22	Mayurbhanj	0	0	0	0	0	0	0	0	0
23	Nabarangpur	0	0	0	0	0	0	0	0	0
24	Nayagarh	0	0	0	0	0	0	0	0	0
25	Nuapada	0	0	0	0	0	0	0	0	0

Sl. No.	Districts	Number of Government UNANI Dispensaries	Unani Medical Officer				Unani Assistant			
			Sanctioned Strength	Persons-in-position	Shortage	%age of shortage	Sanctioned Strength	Persons-in-position	Shortage	%age of shortage
26	Puri	1	1	0	1	100	1	0	1	100
27	Rayagada	0	0	0	0	0	0	0	0	0
28	Sambalpur	0	0	0	0	0	0	0	0	0
29	Subarnapur	0	0	0	0	0	0	0	0	0
30	Sundargarh	0	0	0	0	0	0	0	0	0
Total		9	9	3	6	67	9	2	7	78

(Source: Data obtained from Directorate of AYUSH)

Appendix 2.11
(Refer Paragraph 2.2)

Manpower availability (Teaching) in the Medical College & hospitals of the State as on 31 March 2022

Sl. No.	Medical College & Hospitals	Faculty									Resident doctors						Tutors		
		Professor		Excess(+)/ Shortages (-)	Associate Professor		Excess(+)/ Shortages (-)	Assistant Professor		Excess(+)/ Shortages (-)	Senior Resident		Excess(+)/ Shortages (-)	Junior Resident		Excess(+)/ Shortages (-)	SS	PIP	Excess(+)/ Shortages (-)
		SS	PIP		SS	PIP		SS	PIP		SS	PIP		SS	PIP				
1	SCB MCH, Cuttack	63	46	-17	106	69	-37	232	204	-28	176	131	-45	0	0	0	43	30	-13
2	MKCG MCH, Berhampur	39	36	-3	81	63	-18	162	147	-15	84	53	-31	17	8	-9	40	24	-16
3	VIMSAR, Burla	41	29	-12	76	46	-30	149	118	-31	200	29	-171	0	0	0	47	8	-39
4	PRM MCH, Baripada	21	15	-6	29	23	-6	47	42	-5	39	21	-18	38	24	-14	27	9	-18
5	SLN MCH, Koraput	21	16	-5	29	17	-12	47	45	-2	39	13	-26	38	16	-22	27	19	-8
6	FM MCH, Balasore	21	11	-10	29	19	-10	47	44	-3	39	21	-18	38	18	-20	27	15	-12
7	B.B MCH, Bolangir	21	15	-6	29	19	-10	47	44	-3	39	23	-16	38	26	-12	27	26	-1
8	S.J MCH, Puri	21	12	-9	29	18	-11	45	35	-10	39	19	-20	38	32	-6	27	19	-8
	TOTAL	248	180	-68	408	274	-134	776	679	-97	655	310	-345	207	124	-83	265	150	-115

(Source: Data obtained from Directorate of Medical Education & Training, Odisha)

SS: Sanctioned strength; PIP: Persons-in-position

Appendix 2.12
(Refer Paragraph 2.2)

Availability of Manpower (Non-Teaching Clinical) in the Medical College & hospitals of the State, as on 31 March 2022

Sl. No.	Medical College & Hospitals	Nursing Officers/Nurse*			Paramedics**		
		Sanctioned strength	Persons-in-position	Excess(+)/Shortages (-)	Sanctioned strength	Persons-in-position	Excess(+)/Shortages (-)
1	SCB MCH, Cuttack	1333	992	-341	411	272	-139
2	MKCG MCH, Berhampur	1020	700	-320	147	93	-54
3	VIMSAR, Burla	974	819	-155	200	153	-47
4	PRM MCH, Baripada	337	220	-117	70	53	-17
5	SLN MCH, Koraput	338	189	-149	98	63	-35
6	FM MCH, Balasore	332	206	-126	96	64	-32
7	B.B MCH, Bolangir	695	116	-579	131	62	-69
8	S.J MCH, Puri	0	0	0	50	0	-50
	TOTAL	5,029	3242	-1,787	1,203	760	-443

Source: Data obtained from DMET, Odisha

*Nursing Superintendent, Asst. Nursing Superintendent, Dy. Nursing Superintendent, Nurse, Nursing Officer, Nursing Sister, O.T. Nurse, OT Sister, Psy. Nurse, Public Health Nurse, Staff Nurse, Staff Nurse (ICU)

**Paramedics includes Lab Technicians, Lab assistant/attendant, Pharmacists, radiographer

Appendix 3.1
(Refer Paragraph 3.1)
District-wise shortage of CHCs, PHCs and SCs

Sl. No.	District	Population	CHCs			PHCs			SCs		
			Requirement	Functional	Shortages	Requirement	Functional	Shortages	Requirement	Functional	Shortages
1	Angul	1396000	12	9	3	46	32	14	279	166	113
2	Balasore	2574000	21	17	4	84	74	10	515	275	240
3	Bargarh	1545000	13	16	0	54	49	5	309	204	105
4	Bhadrak	1674000	14	7	7	54	53	1	335	178	157
5	Bolangir	1762000	15	15	0	60	46	14	352	226	126
6	Boudh	489000	4	5	0	16	12	4	98	67	31
7	Cuttack	2802000	24	21	3	95	70	25	560	332	228
8	Deogarh	343000	3	4	0	11	7	4	69	42	27
9	Dhenkanal	1261000	11	10	1	43	34	9	252	167	85
10	Gajapati	616000	8	8	0	31	21	10	123	136	0
11	Ganjam	3829000	32	28	4	128	101	27	766	460	306
12	Jagatsinghpur	1190000	10	11	0	41	36	5	238	189	49
13	Jajpur	1990000	17	12	5	66	61	5	398	260	138
14	Jharsuguda	628000	5	6	0	21	20	1	126	66	60
15	Kalahandi	1753000	14	17	0	57	44	13	351	242	109
16	Kandhamal	807000	10	14	0	40	37	3	161	172	0
17	Kendrapara	1523000	13	8	5	52	46	6	305	227	78
18	Keonjhar	1976000	24	17	7	98	62	36	395	351	44
19	Khurda	2600000	20	16	4	81	68	13	520	202	318
20	Koraput	1501000	19	16	3	75	52	23	300	307	0
21	Malkangiri	692000	8	6	2	33	24	9	138	158	0
22	Mayurbhanj	2764000	34	28	6	137	85	52	553	589	0
23	Nabarangpur	1382000	17	10	7	66	41	25	276	289	0
24	Nayagarh	1002000	9	12	0	35	38	0	200	166	34
25	Nuapada	654000	6	5	1	22	17	5	131	95	36
26	Puri	1833000	15	16	0	61	49	12	367	241	126
27	Rayagada	1062000	13	11	2	53	39	14	212	235	0
28	Sambalpur	1115000	9	11	0	38	36	2	223	167	56
29	Subarnapur	651000	6	5	1	22	18	4	130	89	41
30	Sundargarh	2281000	28	21	7	114	68	46	456	390	66
	State	4,56,95,000	434	382	72	1,734	1,340	397	9,138	6,688	2,573

(Source: Data furnished by DHS, NHM Odisha; Requirement of SCs computed, as per population norms)

Appendix 3.2
(Refer Paragraph 3.1.1)

District-wise sanctioned and available HCIs under AYUSH

Sl. No.	District	Ayurvedic						Homeopathic				Unani	
		Sanctioned			Available			Sanctioned		Available		Sanctioned	Available
		MCHs	Dispensaries	Hospital	MCHs	Dispensaries	Hospital	MCHs	Dispensaries	MCHs	Dispensaries	Dispensaries	Dispensaries
1	Angul	0	16	0	0	16	0	0	19	0	19	0	0
2	Balasore	0	23	0	0	23	0	0	32	0	32	2	2
3	Bargarh	0	22	1	0	22	1	0	17	0	17	0	0
4	Bhadrak	0	21	0	0	21	0	0	25	0	25	2	2
5	Bolangir	1	33	0	1	33	0	0	18	0	18	0	0
6	Boudh	0	10	0	0	10	0	0	4	0	4	0	0
7	Cuttack	0	21	0	0	21	0	0	29	0	29	2	2
8	Deogarh	0	8	0	0	8	0	0	2	0	2	0	0
9	Dhenkanal	0	22	0	0	22	0	0	19	0	19	0	0
10	Gajapati	0	7	0	0	7	0	0	6	0	6	0	0
11	Ganjam	1	48	0	1	48	0	1	43	1	43	0	0
12	Jagatsinghpur	0	11	0	0	11	0	0	17	0	17	0	0
13	Jajpur	0	25	0	0	25	0	0	21	0	21	0	0
14	Jharsuguda	0	9	0	0	9	0	0	8	0	8	0	0
15	Kalahandi	0	20	0	0	20	0	0	18	0	18	0	0
16	Kandhamal	0	17	0	0	17	0	0	19	0	19	0	0
17	Kendrapara	0	15	0	0	15	0	0	19	0	19	1	1
18	Keonjhar	0	48	0	0	48	0	0	34	0	34	1	1
19	Khurda	0	22	1	0	22	1	1	26	1	26	0	0
20	Koraput	0	18	0	0	18	0	0	18	0	18	0	0
21	Malkangiri	0	7	0	0	7	0	0	8	0	8	0	0
22	Mayurbhanj	0	45	0	0	45	0	0	44	0	44	0	0
23	Nabarangpur	0	22	0	0	22	0	0	16	0	16	0	0
24	Nayagarh	0	15	0	0	15	0	0	20	0	20	0	0
25	Nuapada	0	10	0	0	10	0	0	5	0	5	0	0
26	Puri	1	23	0	1	23	0	0	16	0	16	1	1
27	Rayagada	0	20	0	0	20	0	0	14	0	14	0	0
28	Sambalpur	0	15	0	0	15	0	1	16	1	16	0	0
29	Subarnapur	0	14	0	0	14	0	0	5	0	5	0	0
30	Sundargarh	0	33	0	0	33	0	1	24	1	24	0	0
	TOTAL	3	620	2	3	620	2	4	562	4	562	9	9

(Source: Data obtained from Directorate of AYUSH, Odisha)

Appendix 3.3
(Refer Paragraph 3.2.1.1)

Availability of OPD Services at DHHs of the State, as on 31 March 2022

Sl. No.	DHH/ Name of OPD Services	General Medicine	General Surgery	Obstetrics & Gynaecology	Paediatrics	Eye	ENT	Skin and VD	Psychiatry	Orthopedics	Dentistry
1	Angul	Yes	Yes	Yes	Yes	Yes	Yes	Yes	Yes	Yes	Yes
2	Balasore	Yes	Yes	Yes	Yes	Yes	Yes	Yes	Yes	Yes	No
3	Bargarh	Yes	Yes	Yes	Yes	Yes	Yes	Yes	Yes	Yes	Yes
4	Bhadrak	Yes	Yes	Yes	Yes	Yes	Yes	Yes	Yes	Yes	Yes
5	Bolangir	Yes	Yes	Yes	Yes	Yes	Yes	Yes	Yes	Yes	Yes
6	Boudh	Yes	Yes	Yes	Yes	Yes	Yes	Yes	No	Yes	Yes
7	Cuttack	Yes	Yes	Yes	Yes	Yes	Yes	Yes	Yes	Yes	Yes
8	Deogarh	Yes	Yes	Yes	Yes	Yes	Yes	Yes	Yes	No	Yes
9	Dhenkanal	Yes	Yes	Yes	Yes	Yes	Yes	No	Yes	Yes	Yes
10	Gajapati	Yes	Yes	Yes	Yes	Yes	Yes	No	Yes	Yes	Yes
11	Ganjam	Yes	Yes	Yes	Yes	Yes	Yes	Yes	Yes	Yes	Yes
12	Jagatsinghpur	Yes	Yes	Yes	Yes	Yes	Yes	Yes	Yes	Yes	Yes
13	Jajpur	Yes	Yes	Yes	Yes	Yes	Yes	Yes	Yes	Yes	Yes
14	Jharsuguda	Yes	Yes	Yes	Yes	Yes	Yes	Yes	Yes	Yes	Yes
15	Kalahandi	Yes	Yes	Yes	Yes	Yes	Yes	No	Yes	Yes	Yes
16	Kandhamal	Yes	Yes	Yes	Yes	Yes	Yes	Yes	Yes	Yes	Yes
17	Kendrapara	Yes	Yes	Yes	Yes	Yes	Yes	Yes	Yes	Yes	Yes
18	Keonjhar	Yes	Yes	Yes	Yes	Yes	Yes	Yes	Yes	Yes	Yes
19	Khurda	Yes	Yes	Yes	Yes	Yes	Yes	Yes	Yes	Yes	Yes
20	Koraput	Yes	Yes	Yes	Yes	Yes	Yes	Yes	No	Yes	Yes
21	Malkangiri	Yes	Yes	Yes	Yes	Yes	Yes	Yes	Yes	Yes	Yes
22	Mayurbhanj	Yes	Yes	Yes	Yes	Yes	Yes	Yes	Yes	Yes	Yes
23	Nabarangpur	Yes	Yes	Yes	Yes	Yes	Yes	No	Yes	Yes	Yes
24	Nayagarh	Yes	Yes	Yes	Yes	Yes	No	No	No	Yes	Yes
25	Nuapada	Yes	Yes	Yes	Yes	Yes	Yes	No	Yes	Yes	Yes
26	Puri	Yes	Yes	Yes	Yes	Yes	Yes	Yes	Yes	Yes	Yes
27	Rayagada	Yes	Yes	Yes	Yes	Yes	Yes	No	Yes	Yes	Yes
28	Sambalpur	Yes	Yes	Yes	Yes	Yes	Yes	Yes	Yes	Yes	Yes
29	Subarnapur	Yes	Yes	Yes	Yes	Yes	Yes	No	Yes	No	Yes
30	Sundargarh	Yes	Yes	Yes	Yes	Yes	Yes	Yes	Yes	Yes	Yes
31	Capital Hospital	Yes	Yes	Yes	Yes	Yes	Yes	Yes	Yes	Yes	Yes
32	RGH, Rourkela	Yes	Yes	Yes	Yes	Yes	Yes	Yes	No	Yes	Yes

(Source: Data furnished by the DHHs)

Appendix 3.4
(Refer Paragraph 3.2.2)
Department-wise OPD patients in the test-checked DHHs

DHHs	Name of the Department	Number of OPD patients					
		2016-17	2017-18	2018-19	2019-20	2020-21	2021-22
Kandhamal	ENT	NA	2440	544	645	658	1177
	General Medicine	NA	3688	4574	6276	6480	6456
	Pediatrics	NA	11844	8839	27555	11496	18690
	General Surgery	NA	2356	2784	1897	1860	1572
	Ophthalmology	NA	11891	12409	36436	24475	24642
	Dental	NA	1337	1036	1334	2640	2040
	Obstetric & Gynaecology	NA	13764	14789	14236	11616	16572
	Psychiatry	NA	1437	1544	1860	1237	1282
	Orthopedics	NA	1156	1320	1252	1320	2196
	Dermatology & venereology	NA	0	0	4032	1140	3084
	Other if any maybe mentioned (General OPD, Emergency)	NA	129384	180571	206462	99248	125542
	Total			1,79,297	2,28,410	3,01,985	1,62,170
Nuapada	ENT	1721	1703	2052	2293	2209	2197
	General Medicine	3215	3331	4676	6506	4945	5461
	Pediatrics	6053	4290	5572	8063	7410	8101
	General Surgery	2198	3273	5321	6211	1041	656
	Ophthalmology	3713	4200	6283	7931	5727	5547
	Dental	1524	2263	1921	2623	1776	2294
	Obstetrics & Gynaecology	5197	5421	6013	6600	5735	5616
	Psychiatry	0	0	0	0	0	0
	Orthopedics	0	0	0	0	2753	3181
	Dermatology & venereology	0	0	0	0	0	0
	Other if any maybe mentioned (General OPD, Emergency)	46791	62397	85685	96355	54759	44209
	Total	70,412	86,878	1,17,523	1,36,582	86,355	77,262
Bhadrak	ENT	1467	3752	808	1117	706	5210
	General Medicine	175556	136290	151973	224127	115254	129260
	Pediatrics	24976	26021	34121	35991	17117	18222
	General Surgery	9272	10164	38550	31891	10463	14837
	Ophthalmology	45446	42598	44291	51886	37426	39174
	Dental	8141	13758	10456	10454	6030	8101
	Obstetrics & Gynaecology	10661	11594	14931	12878	6647	7552
	Psychiatry	0	0	359	323	618	1202
	Orthopedics	10016	9470	11090	5959	6251	10595
	Dermatology & venereology	29404	28643	30934	22678	4761	15758
	Other if any maybe mentioned	0	0	0	0	0	0

DHHs	Name of the Department	Number of OPD patients					
		2016-17	2017-18	2018-19	2019-20	2020-21	2021-22
	Total	3,14,939	2,82,290	3,37,513	3,97,304	2,05,273	2,49,911
Puri	ENT	602	1202	2136	2865	3127	2873
	General Medicine	98118	154802	219399	292389	191022	171578
	Pediatrics	11964	16850	22322	53571	42021	38066
	General Surgery	6523	8542	8768	8974	45004	41561
	Ophthalmology	28875	30255	29959	36968	25844	18675
	Dental	15986	16120	16754	36968	12401	11203
	Obstetrics & Gynaecology	9918	12215	12521	11907	12655	11662
	Psychiatry	402	705	593	827	185	713
	Orthopedics	4253	6120	9880	12390	14111	11457
	Dermatology & venereology	3678	4325	4320	4998	5741	5324
	Other if any maybe mentioned	71396	92875	123956	177794	138071	162380
	Total	2,51,715	3,44,011	4,50,608	6,39,651	4,90,182	4,75,492
Dhenkanal	ENT	NA	NA	2864	3197	1369	2046
	General Medicine	NA	NA	NA	2763	2056	2726
	Pediatrics	NA	NA	5015	15743	7408	11796
	General Surgery	NA	NA	826	875	1863	2946
	Ophthalmology	14204	15181	14262	12595	6747	8335
	Dental	NA	NA	6717	5882	4408	4619
	Obstetrics & Gynaecology	7473	5573	4554	4119	4571	4320
	Psychiatry	2459	3078	2931	3230	3315	4318
	Orthopedics	5095	4015	5883	4795	4959	7171
	Dermatology & venereology	NA	NA	NA	NA	NA	NA
	Other if any maybe mentioned	NA	NA	NA	NA	NA	NA
	Total	29,231	27,847	43,052	53,199	36,696	48,277
Nabarangpur	ENT	0	0	18	22	22	0
	General Medicine	15569	18697	22650	24698	30650	9560
	Pediatrics	15098	16259	18236	20256	22560	2650
	General Surgery	2620	2856	598	896	920	12
	Ophthalmology	18	20	20	130	152	0
	Dental	3560	3859	3999	4200	3966	156
	Obstetrics & Gynaecology	7348	7748	9015	10091	11830	7517
	Psychiatry	0	0	0	0	0	0
	Orthopedics	265	290	302	420	452	56
	Dermatology & venereology	0	0	0	0	0	12
	Other if any maybe mentioned	26478	35236	54827	82355	8782	2261
	Total	70,956	84,965	1,09,665	1,43,068	79,334	22,224
Sundargarh	ENT	1719	3561	3607	3424	3374	4141
	General Medicine	161265	171920	189777	172422	143322	143289
	Pediatrics	38769	41384	5005	56820	42150	44910

DHHs	Name of the Department	Number of OPD patients					
		2016-17	2017-18	2018-19	2019-20	2020-21	2021-22
	General Surgery	0	0	0	0	0	0
	Ophthalmology	5035	11106	15471	16155	12055	14982
	Dental	2398	5555	5860	4986	5333	7544
	Obstetrics & Gynaecology	3104	3415	3639	5313	7985	8500
	Psychiatry	0	0	0	0	0	0
	Orthopedics	0	0	0	0	0	0
	Dermatology & venereology	3521	9052	12394	11826	9434	9435
	Other if any maybe mentioned	33547	67927	32239	41570	69342	86324
	Total	2,49,358	3,13,920	2,67,992	3,12,516	2,92,995	3,19,125

(Source: Data furnished by the test-checked DHHs)

Appendix 3.5
(Refer Paragraph 3.2.2.1)
OPD cases per doctor per annum in the test-checked DHHs

Year	District Headquarter Hospitals													
	Bhadrak		Dhenkanal		Kandhamal		Nabarangpur		Nuapada		Puri		Sundargarh	
	OPD patients	OPD cases per doctor per annum	OPD patients	OPD cases per doctor per annum	OPD patients	OPD cases per doctor per annum	OPD patients	OPD cases per doctor per annum	OPD patients	OPD cases per doctor per annum	OPD patients	OPD cases per doctor per annum	OPD patients	OPD cases per doctor per annum
2016-17	314939	24226	29231	1218	NA	NA	70691	7855	70412	5029	251715	17980	249358	7556
2017-18	282290	21715	27847	928	179297	14941	84965	7080	86878	6206	344011	24572	313920	10825
2018-19	337513	21095	43052	1133	228410	20765	109665	4387	117523	6913	450608	32186	267992	10720
2019-20	397304	20911	53199	2217	301985	30199	143068	4471	136582	7189	639651	45689	312516	13022
2020-21	205273	10804	36696	1835	162170	11584	79334	3173	86355	4318	490182	27232	292995	9156
2021-22	249911	13153	48277	1857	203253	15635	22224	889	77262	2759	475492	26416	319125	9118

(Source: Data obtained from the test-checked DHHs)

Appendix 3.6
(Refer Paragraph 3.3.1.1)
Availability of IPD Services in the DHHs, as on 31st March 2022

Sl. No.	DHHs	ENT	General Medicine	Pediatrics	General Surgery	Ophthalmology	Dental	Obstetrics & Gynaecology	Psychiatry	Orthopedics	Dermatology & venereology	SNCU
1	Angul	Yes	Yes	Yes	Yes	Yes	Yes	Yes	Yes	Yes	No	Yes
2	Balasore	Yes	Yes	Yes	Yes	Yes	Yes	Yes	Yes	Yes	Yes	Yes
3	Bargarh	Yes	Yes	Yes	Yes	Yes	Yes	Yes	No	No	Yes	Yes
4	Bhadrak	No	Yes	Yes	Yes	Yes	No	Yes	No	Yes	No	Yes
5	Bolangir	Yes	Yes	Yes	Yes	Yes	Yes	Yes	Yes	Yes	Yes	Yes
6	Boudh	Yes	Yes	Yes	Yes	Yes	Yes	Yes	Yes	Yes	Yes	Yes
7	Cuttack	No	Yes	Yes	Yes	Yes	No	Yes	No	No	No	No
8	Deogarh	Yes	Yes	Yes	Yes	Yes	Yes	Yes	Yes	No	Yes	Yes
9	Dhenkanal	No	Yes	Yes	Yes	Yes	No	Yes	No	Yes	No	Yes
10	Gajapati	Yes	Yes	Yes	Yes	Yes	Yes	Yes	No	Yes	No	Yes
11	Ganjam	No	Yes	Yes	Yes	Yes	No	Yes	Yes	No	No	Yes
12	Jagatsinghpur	Yes	Yes	Yes	Yes	Yes	Yes	Yes	Yes	Yes	Yes	Yes
13	Jajpur	Yes	Yes	Yes	Yes	Yes	Yes	Yes	Yes	Yes	Yes	Yes
14	Jharsuguda	Yes	Yes	Yes	Yes	Yes	Yes	Yes	Yes	Yes	Yes	Yes
15	Kalahandi	Yes	Yes	Yes	Yes	Yes	Yes	Yes	Yes	Yes	Yes	Yes
16	Kandhamal	Yes	Yes	Yes	Yes	Yes	Yes	Yes	No	Yes	No	Yes
17	Kendrapara	Yes	Yes	Yes	Yes	Yes	Yes	Yes	Yes	Yes	Yes	Yes
18	Keonjhar	Yes	Yes	Yes	Yes	Yes	Yes	Yes	Yes	Yes	Yes	Yes
19	Khurda	No	Yes	Yes	Yes	Yes	No	Yes	Yes	No	No	Yes
20	Koraput	Yes	Yes	Yes	Yes	Yes	Yes	Yes	Yes	Yes	Yes	Yes
21	Malkangiri	Yes	Yes	Yes	Yes	Yes	No	Yes	No	Yes	No	Yes
22	Mayurbhanj	Yes	Yes	Yes	Yes	Yes	Yes	Yes	Yes	Yes	Yes	Yes
23	Nabarangpur	No	Yes	Yes	Yes	Yes	No	Yes	No	Yes	No	Yes
24	Nayagarh	No	Yes	Yes	Yes	Yes	No	Yes	No	No	No	Yes
25	Nuapada	Yes	Yes	Yes	Yes	Yes	Yes	Yes	Yes	Yes	No	Yes
26	Puri	Yes	Yes	Yes	Yes	Yes	Yes	Yes	Yes	Yes	Yes	Yes
27	Rayagada	Yes	Yes	Yes	Yes	Yes	Yes	Yes	Yes	Yes	No	Yes
28	Sambalpur	Yes	Yes	Yes	Yes	Yes	Yes	Yes	Yes	Yes	Yes	Yes
29	Subarnapur	Yes	Yes	Yes	Yes	Yes	Yes	Yes	Yes	No	No	No
30	Sundargarh	Yes	Yes	Yes	Yes	Yes	No	Yes	Yes	Yes	Yes	Yes
31	Capital Hospital	Yes	Yes	Yes	Yes	Yes	Yes	Yes	Yes	Yes	Yes	Yes
32	RGH Rourkela	Yes	Yes	Yes	Yes	Yes	Yes	Yes	No	Yes	Yes	Yes

(Source: Data obtained from the DHHs)

Appendix 3.7
(Refer Paragraph 3.3.1.2)
Availability of IPD Services in the test-checked CHCs, as on 31 March 2022

CHCs	General Medicine	General surgery	Obstetrics & Gynaecology	Paediatrics	Dental
Bangurigaon	Yes	Yes	Yes	Yes	No
Barapada	No	No	No	No	No
Basudevpur	Yes	Yes	Yes	Yes	Yes
Khajuriakata	Yes	No	Yes	No	No
Khariar road	Yes	No	Yes	No	Yes
Komna	Yes	No	Yes	No	Yes
Kosagmunda	Yes	Yes	Yes	Yes	No
Kuarmund	Yes	No	Yes	Yes	No
Lahunipada	Yes	Yes	Yes	Yes	No
Nimapara	Yes	Yes	Yes	Yes	No
Papdahandi	Yes	Yes	Yes	No	Yes
Raikia	Yes	No	Yes	No	No
Sriramchandrapur	Yes	Yes	Yes	No	No
Tikabali	Yes	Yes	Yes	Yes	No

(Source: Data furnished by the DHHs)

Appendix 3.8
(Refer Paragraph 3.4)

Availability of Line Services in the DHHs, as on 31 March 2022

Sl. No.	Name of the DHHs	Emergency Services	Accident and Trauma Care services	Imaging Services	Pathology Services	Ambulance Services	Blood Bank	Bio-Medical Waste Management	ICU	Oxygen Services (Plants)	Mortuary Services
1	Angul	Yes	Yes	Yes	Yes	Yes	Yes	Yes	Yes	Yes	Yes
2	Balasore	Yes	Yes	Yes	Yes	Yes	Yes	Yes	Yes	Yes	Yes
3	Bargarh	Yes	No	Yes	Yes	Yes	No	Yes	No	Yes	Yes
4	Bhadrak	Yes	Yes	Yes	Yes	Yes	Yes	Yes	No	No	Yes
5	Bolangir	Yes	No	Yes	Yes	Yes	Yes	Yes	Yes	Yes	Yes
6	Boudh	Yes	Yes	Yes	Yes	Yes	Yes	Yes	No	Yes	Yes
7	Cuttack	Yes	Yes	Yes	Yes	Yes	Yes	Yes	No	Yes	No
8	Deogarh	Yes	No	Yes	Yes	Yes	Yes	Yes	No	No	Yes
9	Dhenkanal	Yes	Yes	Yes	Yes	Yes	Yes	Yes	No	No	Yes
10	Gajapati	Yes	No	Yes	Yes	Yes	Yes	Yes	No	Yes	Yes
11	Ganjam	Yes	No	Yes	Yes	Yes	No	Yes	No	Yes	No
12	Jagatsinghpur	Yes	No	Yes	Yes	Yes	Yes	Yes	No	Yes	No
13	Jajpur	Yes	No	Yes	Yes	Yes	Yes	Yes	Yes	Yes	Yes
14	Jharsuguda	Yes	No	Yes	Yes	Yes	Yes	Yes	No	Yes	Yes
15	Kalahandi	Yes	No	Yes	Yes	Yes	Yes	Yes	Yes	Yes	Yes
16	Kandhamal	Yes	No	Yes	Yes	Yes	Yes	Yes	No	No	Yes
17	Kendrapara	Yes	Yes	Yes	Yes	Yes	Yes	Yes	Yes	Yes	Yes
18	Keonjhar	Yes	Yes	Yes	Yes	Yes	Yes	Yes	No	Yes	Yes
19	Khurda	Yes	Yes	Yes	Yes	Yes	Yes	Yes	No	Yes	Yes
20	Koraput	Yes	No	Yes	Yes	Yes	Yes	Yes	No	Yes	Yes
21	Malkangiri	Yes	No	Yes	Yes	Yes	Yes	Yes	Yes	Yes	Yes
22	Mayurbhanj	Yes	No	Yes	Yes	Yes	Yes	Yes	Yes	Yes	Yes
23	Nabarangpur	Yes	No	Yes	Yes	Yes	Yes	Yes	Yes	No	Yes
24	Nayagarh	Yes	No	Yes	Yes	Yes	Yes	Yes	Yes	Yes	Yes
25	Nuapada	Yes	No	Yes	Yes	Yes	Yes	Yes	Yes	Yes	Yes
26	Puri	Yes	No	Yes	Yes	Yes	Yes	Yes	Yes	Yes	Yes

Sl. No.	Name of the DHHs	Emergency Services	Accident and Trauma Care services	Imaging Services	Pathology Services	Ambulance Services	Blood Bank	Bio-Medical Waste Management	ICU	Oxygen Services (Plants)	Mortuary Services
27	Rayagada	Yes	Yes	Yes	Yes	Yes	Yes	Yes	No	Yes	Yes
28	Sambalpur	Yes	No	Yes	Yes	Yes	Yes	Yes	No	Yes	Yes
29	Subarnapur	Yes	No	Yes	Yes	No	Yes	Yes	No	No	Yes
30	Sundargarh	Yes	Yes	Yes	Yes	Yes	Yes	Yes	No	Yes	Yes
31	Capital Hospital	Yes	No	Yes	Yes	Yes	Yes	Yes	Yes	Yes	Yes
32	RGH Rourkela	Yes	No	Yes	Yes	Yes	Yes	Yes	No	Yes	Yes

(Source: Data furnished by the DHHs)

Appendix 3.9

(Refer Paragraph 3.4.1.1)

Shortage of equipment in the Central Casualty Departments of the test-checked MCHs

Sl. No.	Item	PRM MCH (100 admissions)			MKCG MCH (250 admissions)		
		No. of items required	No. of items available	Shortage	No. of items required	No. of items available	Shortage
1	Ventilators	3	2	1	4	4	0
2	ECG machines	3	1	2	4	4	0
3	Nebulizers	3	1	2	4	4	0
4	Fully equipped disaster trolleys (emergency trolleys).	3	2	1	4	1	3
5	Emergency X-ray (Fixed 300/500mA)	1	0	1	1	1	0
6	Emergency X-ray Mobile 100mA	1	1	0	1	1	0
7	Sonography machines in the casualty	1	0	1	2	0	2
8	Pedestal lights	2	0	2	2	0	2
9	Electro-surgical cautery unit	2	2	0	2	1	1
10	Assorted surgical instrument sets	5	2	3	5	5	0
11	Pocket masks with oxygen port	1	1	0	1	0	1
12	Oropharyngeal airways, sizes 2, 3 and 4	1	1	0	1	0	1
13	Nasopharyngeal airways, sizes 6 and 7	1	0	1	1	1	0
14	Portable suction equipment	1	0	1	4	4	0
15	Laryngeal mask airways (sizes 4 and 5), or Pro Seal LMAs (sizes 4 and 5)	1	0	1	1	1	0
16	Seldinger central venous catheter kits	1	0	1	1	1	0
17	Arterial blood gas syringes	1	1	0	1	0	1
18	Tourniquets	1	1	0	1	0	1
	Total shortage	32	15	17	40	28	12

(Source: Information furnished by the test-checked MCHs)

Appendix 3.10
(Refer Paragraph 3.5)
Availability of Maternal and Child Care services and availability of Beds in DHHs, as on 31 March 2022

Sl. No.	DHHs	Availability of Maternal and Child care services (Yes/No)	Number of Sanctioned Beds	Number of Functional Beds
1	Angul	Yes	100	167
2	Balasore	Yes	100	250
3	Bargarh	Yes	125	125
4	Bhadrak	Yes	96	143
5	Bolangir	Yes	125	125
6	Boudh	Yes	28	36
7	Cuttack	Yes	40	40
8	Deogarh	Yes	71	71
9	Dhenkanal	Yes	72	72
10	Gajapati	Yes	101	101
11	Ganjam	Yes	20	20
12	Jagatsinghpur	Yes	60	102
13	Jajpur	Yes	100	100
14	Jharsuguda	Yes	30	56
15	Kalahandi	Yes	100	100
16	Kandhamal	Yes	100	100
17	Kendrapara	Yes	100	55
18	Keonjhar	Yes	50	95
19	Khurda	Yes	100	100
20	Koraput	Yes	50	50
21	Malkangiri	Yes	0	92
22	Mayurbhanj	Yes	124	214
23	Nabarangpur	Yes	50	50
24	Nayagarh	Yes	100	100
25	Nuapada	Yes	100	100
26	Puri	Yes	100	140
27	Rayagada	Yes	50	50
28	Sambalpur	Yes	50	50
29	Subarnapur	Yes	24	24
30	Sundargarh	Yes	80	85
31	Capital Hospital	Yes	100	150
32	RGH Rourkela	Yes	100	110
	TOTAL		2446	3073

(Source: Data obtained from the DHHs)

Appendix 3.11
(Refer Paragraph 3.6.1.2)

Surgeries per surgeon per annum in the test-checked DHHs, during FYs 2016-17 to 2021-22

DHHs	Year	Total Surgeries			Number of Surgeons			Surgeries per Surgeon		
		General Surgery	Orthopaedics	Eye	General Surgery	Orthopaedics	Eye	General Surgery	Orthopaedics	Eye
Bhadrak	2016-17	873	1638	577	3	2	1	291	819	577
	2017-18	1040	1482	496	3	2	2	347	741	248
	2018-19	6321	4344	193	3	2	2	2107	2172	97
	2019-20	4401	3500	96	3	2	2	1467	1750	48
	2020-21	685	1215	173	3	2	2	228	608	87
	2021-22	984	1157	124	3	2	2	328	579	62
Dhenkanal	2016-17	1868	89	514	2	1	1	934	89	514
	2017-18	2242	169	276	2	1	1	1121	169	276
	2018-19	2319	65	34	3	1	1	773	65	34
	2019-20	2903	96	224	3	1	1	968	96	224
	2020-21	2731	82	310	3	1	2	910	82	155
	2021-22	3670	9	398	3	1	2	1223	9	199
Kandhamal	2016-17	368	23	256	4	1	1	92	23	256
	2017-18	476	NA	38	3	0	2	159	NA	19
	2018-19	604	53	96	2	1	1	302	53	96
	2019-20	645	48	240	3	1	2	215	48	120
	2020-21	365	72	211	2	1	2	183	72	106
	2021-22	338	62	488	3	1	2	113	62	244
Nabarangpur	2016-17	1285	180	230	1	1	1	1285	180	230
	2017-18	1470	220	450	1	1	1	1470	220	450
	2018-19	1639	254	378	1	1	1	1639	254	378
	2019-20	1423	180	580	1	1	1	1423	180	580
	2020-21	1841	253	308	1	1	1	1841	253	308
	2021-22	893	347	50	1	1	1	893	347	50
Nuapada	2016-17	1104	0	0	1	0	0	1104	0	0
	2017-18	1494	0	145	1	0	2	1494	0	73
	2018-19	1286	0	245	1	0	2	1286	0	123
	2019-20	327	3	243	1	1	2	327	3	122
	2020-21	289	104	175	1	1	2	289	104	88
	2021-22	75	206	200	1	2	2	75	103	100

DHHs	Year	Total Surgeries			Number of Surgeons			Surgeries per Surgeon		
		General Surgery	Orthopaedics	Eye	General Surgery	Orthopaedics	Eye	General Surgery	Orthopaedics	Eye
Puri	2016-17	38447	583	981	3	2	1	12816	292	981
	2017-18	39309	647	1166	4	2	1	9827	324	1166
	2018-19	40317	921	1189	4	2	1	10079	461	1189
	2019-20	40636	1116	1288	4	2	1	10159	558	1288
	2020-21	41583	1173	1330	5	3	2	8317	391	665
	2021-22	41988	1294	1457	5	3	2	8398	431	729
Sundargarh	2016-17	308	0	825	4	0	1	77	0	825
	2017-18	353	0	391	4	0	1	88	0	391
	2018-19	642	0	1200	4	0	2	161	0	600
	2019-20	515	0	663	5	1	2	103	0	332
	2020-21	355	75	223	2	2	2	178	38	112
	2021-22	677	22	703	3	3	2	226	7	352

(Source: Data obtained from the test-checked DHHs)

Appendix 3.12
(Refer Paragraph 3.9.3.1)
Availability of 108-Ambulances in the State

Sl. No	Districts	ALS	BLS	TOTAL
1	Angul	4	16	20
2	Bolangir	4	19	23
3	Balasore	5	34	39
4	Bargarh	3	17	20
5	Boudh	2	8	10
6	Bhadrak	4	20	24
7	Cuttack	6	22	28
8	Deogarh	2	3	5
9	Dhenkanal	4	14	18
10	Gajapati	2	6	8
11	Ganjam	8	33	41
12	Jagatsinghpur	2	11	13
13	Jajpur	4	19	23
14	Jharsuguda	2	6	8
15	Kalahandi	4	20	24
16	Kandhamal	3	12	15
17	Kendrapara	4	14	18
18	Keonjhar	7	24	31
19	Khurda	4	27	31
20	Koraput	4	19	23
21	Malkangiri	2	10	12
22	Mayurbhanj	7	34	41
23	Nabarangpur	2	15	17
24	Nayagarh	2	13	15
25	Nuapada	2	9	11
26	Puri	3	24	27
27	Rayagada	4	16	20
28	Sambalpur	4	15	19
29	Subarnapur	2	8	10
30	Sundargarh	6	24	30
Total		112	512	624

(Source: Data obtained from NHM, Odisha)

Appendix 4.1
(Refer Paragraph 4.1.1)
Short and excess supply of essential medicines, compared to the approved/ indented quantities

Name of District	Financial Year	Short supply			Excess supply			No supply	
		Number of drugs	Quantity approved (in crore)	Quantity supplied (in crore) (%)	Number of drugs	Quantity approved (in crore)	Quantity supplied (in crore) (%)	Number of drugs	Quantity approved
Bhadrak	2019-20	387	11.99	6.51 (54)	47	0.46	0.86 (187)	145	3290344
	2020-21	395	18.11	7.56 (42)	54	0.41	1.34 (327)	156	11723614
	2021-22	564	25.79	7.00 (27)	31	0.2	0.28 (140)	248	37603912
Dhenkanal	2019-20	273	3.84	2.12(55)	123	1.58	4.34 (275)	103	1078693
	2020-21	326	9.82	5.33(54)	107	0.83	1.72 (207)	82	7650984
	2021-22	299	12.89	5.78(45)	72	0.59	0.89 (151)	221	33517464
Kandhamal	2019-20	205	3.54	2.49 (70)	118	1.13	1.64 (145)	88	1242320
	2020-21	287	8.16	3.32 (41)	61	0.76	0.97 (128)	408	5947877
	2021-22	353	11.09	4.27 (39)	54	0.22	0.36 (164)	504	25070107
Nuapada	2019-20	322	2.56	1.47 (57)	72	0.32	1.27 (397)	100	1033198
	2020-21	385	4.9	2.42 (49)	92	0.46	1.1 (239)	149	3573894
	2021-22	540	7.88	2.28 (29)	78	0.58	0.87 (150)	466	5134441
Puri	2019-20	206	6.34	4.19 (66)	47	1.5	1.88 (125)	94	1059752
	2020-21	267	11.63	7.9 (68)	42	4.13	4.66 (113)	109	16240218
	2021-22	274	19.31	6.47 (34)	41	1.01	1.64 (162)	128	30160766
Sundargarh	2019-20	224	6.13	3.55 (58)	18	0.26	0.40 (154)	86	1213222
	2020-21	240	15.47	6.42 (41)	31	0.3	0.93 (310)	121	4495229
	2021-22	301	19.2	7.44 (39)	24	0.23	0.41 (178)	198	44300157

(Source: Data obtained from the test-checked DHHs)

Appendix 4.2
(Refer Paragraph 4.2.6.1)
Equipment, not put to use, in MCHs

Sl. No.	Equipment	Quantity	Department	Date of purchase	Date of installation	Price (in ₹)	Reasons for non-use, as furnished by the MCH
(A)	PRM MCH, Baripada						
1	Large Extension Kymograph	3	Physiology	21.3.2018	17.6.2019	3,52,800	As Mammalian experiments have not been permitted since March 2014.
2	Dale's Bath for Internal Organ	10	Physiology	2.5.2018	17.6.2019	63,22,912	
3	Dale's Bath for Internal Organ	5	Physiology	17.2.2020	13.02.2020	31,61,456	
4	Operation Table	3	Physiology	13.2.2020	13.2.2020	21,41,700	
5	Gas Analyser (Co2, N2, O2)	1	Physiology	17.2.2020	17.2.2020	40,01,568	Due to non-supply of reagents, it has not been used since September 2020.
6	ECG Machine	1	Physiology	02.03.2019	12.03.2019	23,660	Out of order, from the date of installation (March 2019).
7	Semi-automatic Rotary Microtomes	1	Pathology	1.1.2018	01.04.2018	6,43,100	Out of order, from the date of installation (1.4.2018).
8	Parafin Embedding Bath	1	Pathology		10.5.2018	5,38,080	Out of order, since September 2019.
9.	Hot Plate	1	Biochemistry (Central Research Lab)	06.12.2017	26.03.2018	43,680	The Central Research Laboratory would be functional after opening of PG course, in future.
10.	Deep Freezer	1	Biochemistry (Central Research Lab)	01.01.2018	26.03.2018	1,36,880	
11	Autoclaves	4	Biochemistry (Central Research Lab)	23.12.2017	26.03.2018	7,55,200	
12	Hot Air Oven	1	Biochemistry (Central Research Lab)	06.12.2017	26.03.2018	77,280	

Sl. No.	Equipment	Quantity	Department	Date of purchase	Date of installation	Price (in ₹)	Reasons for non-use, as furnished by the MCH
13	Water Stills for Distilled Water	1	Biochemistry (Central Research Lab)	01.01.2018	26.03.2018	69,000	
14	Laminar Flow Bench	1	Biochemistry (Central Research Lab)	10.01.2018	26.03.2018	2,95,000	
15	Vacuum Pump	2	Biochemistry (Central Research Lab)	10.01.2018	26.03.2018	98,000	
16	ELISA Reader and Washer	3	Biochemistry (Central Research Lab)	04.12.2017	24.05.2018	5,86,500	
17	Fume Hood	2	Biochemistry (Research Laboratory)	04.12.2017	17.07.2018	3,30,000	Equipment were retained for use in PG course.
18	Autoclave	1	Biochemistry (Research Laboratory)	23.12.2017	12.03.2018	1,88,769	
19	Hot Air Oven	1	Biochemistry (Research Laboratory)	04.12.2017	12.03.2018	77,280	
20	Actimeter	1	Pharmacology	04.12.2017	12.07.2018	2,10,000	Not required for UG students. They will be used for PG Students, in future.
21	Rotarod Apparatus (Acceleration mode)	1	Pharmacology	04.12.2017	12.07.2018	3,55,000	
22	Rotarod apparatus	1	Pharmacology	04.12.2017	12.07.2018	1,42,500	
23	Hot Air Oven	1	Pharmacology	04.12.2017	28.02.2018	77,280	
24	Hot Plates	2	Pharmacology	04.12.2017	28.02.2018	79,000	
25	Cook's Pole Climbing Apparatus	1	Pharmacology	04.12.2017	12.07.2018	76,700	
26	Water stills for Distilled water	2	Pharmacology	04.12.2017	28.02.2018	69,000	
27	Metabolic cage for small rodents	1	Pharmacology	04.12.2017	12.07.2018	41,300	

Sl. No.	Equipment	Quantity	Department	Date of purchase	Date of installation	Price (in ₹)	Reasons for non-use, as furnished by the MCH
28	Metabolic cage for small rodents	1	Pharmacology	04.12.2017	12.07.2018	35,400	
29	Metabolic cage for large rodents	1	Pharmacology	04.12.2017	12.07.2018	47,040	
30	Autoclave	1	Pharmacology	04.12.2017	28.02.2018	1,60,000	
31	Digital Physiograph	1	Pharmacology	04.12.2017	06.07.2020	8,09,622	
32	Computerised Physiograph	1	Pharmacology	04.12.2017	06.07.2020	16,07,608	
33	Parafin Embedding Bath with Cold Plate	2	Forensic Medicine & Toxicology Department (FMT)	24.01.2018	26.02.2018	1076160	
34	Semi-automatic Microtones	1	FMT	24.01.2018	24.02.2018	5,90,000	The equipment would be used by the FMT Department after operation of mortuary in new attached hospital which was under construction.
35	Embalming Pump	1	FMT	24.01.2018	26.02.2018	1,56,800	
36	Potable X-ray machine	1	FMT	24.06.2020	24.06.2020	9,38,100	
37	Anthrometric Set	1	FMT	02.03.2020	24.03.2020	92,040	
38	Digital Spectrometer	1	FMT	18.02.2020	18.02.2020	2,95,000	
39	Dissection Set Complete	4	FMT	02.03.2020	24.03.2020	2,73,760	
40	Deep Freezer for keeping Tissue	2	FMT	09.01.2020	28.02.2018	2,19,008	
41	Automatic Tissue Processing Machine	1	FMT	12.01.2018	26.02.2018	6,43,000	
42	Four Body Mortuary Chamber	1	FMT	23.12.2017	26.02.2018	8,23,640	
43	Autopsy Table	2	FMT	19.02.2018	26.02.2018	9,55,800	
44	Autopsy Saw with Accessories	3	FMT	12.01.2018	26.02.2018	7,39,200	
45	Instrument trolley	20	FMT	24.01.2018	26.02.2018	2,12,400	
46	Ventilator (for paediatric covid 19)	24	Issued to 30 bedded ICU	11.11.2021	08.04.2022	OSMCL supplied	As the 30-bedded ICU is not functioning
47	Oxygen concentrator	84	Kept in Central Stock	16.7.2021	1.9.2021	OSMCL supplied	Due to decrease of Covid patients
48	Motorized ICU bed (paediatric covid 19) prm	10	Issued to 30 bedded ICU	11.11.2021	1.12.2021	OSMCL supplied	As the 30-bedded ICU is not functioning

Sl. No.	Equipment	Quantity	Department	Date of purchase	Date of installation	Price (in ₹)	Reasons for non-use, as furnished by the MCH
49	Defibrillator (covid 19)	1	Issued to 30 bedded ICU	11.11.2021	9.3.2022	OSMCL supplied	
50	Laboratory refrigerator (covid 19)	2	Kept in Central Stock	11.11.2021	Not installed	OSMCL supplied	
51	ECG machine(12 channels)for covid 19)	1	Issued to 30 bedded ICU	11.11.2021	10.3.2022	OSMCL supplied	
52	X-ray view box(paediatic covid 19)prm	2	Issued to 30 bedded ICU	11.11.2021	10.3.2022	OSMCL supplied	
53	Phototherapy (for paediatric covid-19)	2	Issued to 30 bedded ICU	11.11.2021	10.3.2022	OSMCL supplied	
54	Refrigerated Centrifuge	1	Blood Bank	12.6.2017	28.6.2017	22,22,325	In the absence of a license & Pathologist, it was lying idle
55	Intensive Care Ventilator	1	SNCU	25.3.2017	30.8.2017	12,23,333	As the central oxygen pipe line was not connected to the SNCU, machine was not used.
56	Blood Gas & Electrolyte Analyzer	1	Central Lab	6.4.2017	8.1.2018	4,30,500	Non-available of Separate AC Room. It is meant for ICU, for examining veinous blood
57	Non Contact Tonometer	1	Ophthalmology	25.5.2018	25.7.2018	4,35,120	Due to space constraints in the Ophthalmology Department
58	Retina Laser	1	Ophthalmology	27.11.2018	27.11.2018	31,63,948	Lack of infrastructure facilities
59	Tread Mill Test Machine	1	Medicine	12.6.2018	7.3.2019	9,48,080	Non-availability of a specific room
60	Elisa Reader & Washer	1	Ophthalmology	31.5.2019	23.8.2019	2,18,000	For use at the time of Eye bank functioning
61	Biomedical Waste Microwaves	1	Biomedical Waste Management	11.11.2019	28.11.2019	33,06,592	As the machine was shifted to a new building .
62	Blood Gas Analyzer	1	ICU DEPT	10.4.2017	4.7.2018	2,59,500	Required Cartridge was not supplied
63	Bubble CPAP Machine	2	SNCU	10.8.2018	25.11.2019	5,01,556	The central oxygen pipe line was not connected to the SNCU. Hence, the machine was not used.

Sl. No.	Equipment	Quantity	Department	Date of purchase	Date of installation	Price (in ₹)	Reasons for non-use, as furnished by the MCH
64	RETCAM 3 wide Field Digital Imaging System	1	Ophthalmology	6.1.2020	5.2.2020	1,41,12,000	As AC room was not available, therefore the machine was not used.
65	Ventilator (Infant to Adult)	20	30 bedded ICU	3.12.2019	13.3.2020	2,68,98,300	As 30-bedded ICU is not functioning
B.	MKCG MCH, Berhampur						
66	Rat cage bin grill & cage grill	100	Pharmacology	02.12.2019	-	74,340	Kept in the store room, as use of animals, for research, for education, could not be conducted due to non-posting of a Veterinary Officer since April 2020
67	Rat Metabolic Cage	5	Pharmacology	28.12.2019	-	2,00,010	
68	Physiograph, Laptop, printer	4	Pharmacology	06.01.2020	-	5,94,720	
69	Electric Balance	2	Pharmacology	11.06.2021	-	1,98,240	
70	pH Meter	2	Pharmacology	27.09.2021	-	1,06,200	
71	Stepdown Latency Apparatus	2	Pharmacology	27.09.2021	-	2,73,760	
72	Digital Plethysmograph	1	Pharmacology	27.09.2021	-	2,26,560	
73	Computer Assisted Learning module (CAL Software)	1	Pharmacology	15.04.2021	-	2,57,122	Due to lack of the security and renovation of the new lab building, computers and accessories are kept in the store room. These are to be installed in another lab soon
74	Desktop and monitor	25	Pharmacology	08.06.21 to 21.08.2021	-	22,12,500	
75	25 UPS for 25 Desktop	25	Pharmacology			1,10,000	
76	BOD Incubators	1	Microbiology			1,03,000	Complaint given to KTPL. Not yet rectified.
77	Deep freezer (-20 degree C)	1	Microbiology			1,11,360	Telephonic complaint given to KTPL, but not yet repaired.
78	Real Time PCR Machine (BIO RAD)	1	Microbiology	6.8.2020	6.8.2020	13,60,000	Complaint has been lodged with concerned supplier. But problem has not been resolved till date.
79	Refrigerated Centrifuge, PCR Plate Centrifuge and Auto pipette set	1	Microbiology	14.5.2020	14.5.2020	13,03,900	Complaint was lodged to KTPL. But, problem has not been resolved till date.
80	Tarson Spinwin Mini Centrifuge	1	Microbiology	22.6.2020	22.6.2020	30,723	

Sl. No.	Equipment	Quantity	Department	Date of purchase	Date of installation	Price (in ₹)	Reasons for non-use, as furnished by the MCH
81	Bio Safety Cabinet Class	1	Microbiology	21.4.2020	Not installed	4,01,200	Due to non-installation of equipment
82	Deep Freezer -20 Degree to -40 degree)	1	Microbiology	7.10.2020	Not installed	3,01,000	Due to non-installation of equipment
83	Water Purification System Brand-Millipore	1	Pathology	8.3.2021		16,80,320	Not completed due to renovation of building
84	Five Part Fully Automated Cell Counter	1	Pathology	9.4.2021	Not installed	NA	Due to non-installation of equipment
85	CO ₂ Incubator (Model: ICO150MED)	1	MRU	16.7.2019	16.7.2019	6,54,900	The equipment would be used after collection of required research samples.
86	Orbital Shaking Incubator Brand- Remi	1	MRU	19.06.2019	19.06.2019	3,48,100	The equipment would be used after collection of required research samples.
87	CO ₂ Cylinder with Regulator Brand- Lab Items	1	MRU	12.7.2019	12.7.2019	17,110	The equipment would be used after collection of required research samples.
88	RT-PCR (Model: Quanta Studio 5 Real Time PCR System)	1	MRU	20.9.2021	20.9.2021	19,80,040	The equipment will be used after procurement of required consumables (Probe-primer).
89	Water Bath	1	Physiology	July 2014		78,315	Unused at Research Lab
90	Meditech England Monitor	10	54 bedded ICU	Not available	Not available	OSMCL supplied	Due to non-functioning of 54-bedded ICU in the PMSSY building
91	Mindray Syringe Pump	16	54 bedded ICU	NA	NA	OSMCL supplied	
92	Maquet Ventilator- High End (ICU)	14	54 bedded ICU	NA	NA	OSMCL supplied	
93	Skan Respiro Plus Ventilator	14	54 bedded ICU	30-12-2018	NA	OSMCL supplied	
94	Cardio Lab Ventilator	5	54 bedded ICU	20-03-2020	NA	OSMCL supplied	

Sl. No.	Equipment	Quantity	Department	Date of purchase	Date of installation	Price (in ₹)	Reasons for non-use, as furnished by the MCH
95	CV 20 Skanray Ventilator	12	54 bedded ICU	NA	NA	OSMCL supplied	
96	Medi Tech England 1700 Ventilator	5	54 bedded ICU	NA	NA	OSMCL supplied	
97	Neu movent Schiller Ventilator	6	54 bedded ICU	NA	NA	OSMCL supplied	
98	Nellcor Puritan benneth 840 Vent System Ventilator	6	54 bedded ICU	NA	NA	OSMCL supplied	
99	Nihon Kohden Defibrillator	1	54 bedded ICU	NA	NA	OSMCL supplied	
100	Laryngo Scope	4	54 bedded ICU	NA	NA	OSMCL supplied	
101	Nebulisation Machine	7	54 bedded ICU	NA	NA	OSMCL supplied	
102	Cardiac Cath Lab Accessories	1	Cardiology Cath Lab	July 2010		3,13,00,000	Operation of the Cath Lab had been discontinued since 04 March 2022, due to setting up of a new Cath Lab in the PMSSY building. No arrangement has been made to shift the Cath lab, from the unsafe building, to another location, for treatment of patients.
103	Intra Aortic Balloon Pump (IABP)	1	Cardiology (Cath-Lab.)	19.5.2014		52,50,000	It was unused since 4 March 22, due to the Cath Lab having been shifted from the unsafe Indoor Hospital Building to the PMSSY building.
104	Extra Corporeal Shockwave Lithotripter	1	Urology	14.11.2014	21.11.2014	3,21,83,457	Lithotripter machine was laying in an unsafe building and had not been used since March 2020.
105	Bubble CPAP	4	Paediatric SNCU	28.1.2020	21.1.2022	11,23,485	As the central oxygen pipe line was not connected to the SNCU, the machine was not used.

Sl. No.	Equipment	Quantity	Department	Date of purchase	Date of installation	Price (in ₹)	Reasons for non-use, as furnished by the MCH
106	Stroboscope	1	ENT (OPD)	3.2.2020	1.3.2020	9,40,844	Non-available of display unit (Monitor etc.)
107	Prachy Meter with Non-Contact Tono Meter	1	Ophthalmology	19.4.2018	20.4.2018	8,40,479	Complaint has been lodged with KTPL, but, problem has not been resolved till date.
108	Automated Clinical Chemistry Analyser	1	Endocrinology	12.8.2021	3.9.2021	18,88,000	Due to technical problem with the machine, it has not functioning from the date of installation.
109	Basic Anaesthesia Machine	1	Anaesthesiology Department. Installed in Main OT	7.12.2018	31.12.2018	6,25,400	Complain had been lodged with KTPL. But the problem had not been resolved till date of audit.
110	Basic Anaesthesia Machine	1	Anaesthesiology Department. Installed in Surgery OT	8.6.2019	21.6.2019	6,25,400	
111	Boyle's Apparatus	1	Anaesthesiology Department. Installed in Trauma OT	3.1.2011	NA	1,21,874	
112	Operating Table, Electro Hydraulic	1	Ortho OT	31.7.2018	10.10.2018	18,15,254	
113	C-Arm	1	Ortho OT	28.4.2018	1.5.2018	14,48,113	
114	Electro Surgical Unit (Frequency Energy Platform with vessel sealing)	1	Neuro Surgery	1.2.2014	4.3.2014	25,20,000	Due to shortage of Neurosurgery doctor, delay occurred in functioning of Neurosurgery OT.
	Total	553				17,75,93,203	

(Source: Information furnished by the two test-checked MCHs)

Appendix 4.3

(Refer Paragraph 4.2.9.2)

Excess expenditure, due to procurement of EIF higher than contract price of OSMCL

Sl. No	Item	Date of procurement	Quantity	Unit cost (contract price of OSMCL) (in ₹)	GST per cent	Procured price per unit (in ₹)	Excess per unit (in ₹)	Total excess on unit cost (in ₹)	Extra GST (in ₹)	Total excess including GST (in ₹)
1	Emergency and Recovery Trolley	05.03.2018	1	29,475	18	54,000	24,525	24,525	4,415	28,940
2	Infantometer	22.08.2018	2	1,800	12	2,900	1,100	2,200	264	2,464
3	Patient examination table	30.07.2018	1	3,200	18	16,500	13,300	13,300	2,394	15,694
4	Direct Ophthalmoscope	27.03.2019	1	12,950	12	30,576	17,626	17,626	2,115.10	19,741
6	Instrument Trolley	17.12.2019	20	5,740	18	67,10	970	19,400	3,492	22,892
7	Examination table	17.12.2019	1	3,200	18	7,260	4,060	4,060	731	4,791
8	Infantometer Standard Brand-INCO	30.08.2021	4	1,800	12	7,800	6,000	24,000	2,880	26,880
10	Autoclave Brand-Equitron	15.06.2019	2	2,02,000	28	3,90,000	1,88,000	3,76,000	1,05,280	4,81,280
11	Hot Air Oven Brand-Equitron	15.06.2019	2	30,500	28	1,16,900	86,400	1,72,800	48,384	2,21,184
12	Incubator Brand-Equitron	15.06.2019	2	28,500	18	99,700	71,200	1,42,400	25,632	1,68,032
	Total		36					7,96,311	1,95,587	9,91,898

(Source: Information and records, supplied by MKCG MCH)

Appendix 4.4
(Refer Paragraph 4.2.12)

Defunct equipment in various departments of MKCG MCH, as per data maintained by M/s KTPL

Sl. No.	Barcode No	Department	Device Name	Manufacturer	Purchase value (in ₹)	Installation Date	Contract Status	Current Status
1	229968	Orthopedic OT	Anaesthesia Workstation	Meditec International England Ltd	590000	21-06-2019	No warranty/ cmc/ amc	Not working
2	229939	Labor Room	Light, Examination	Medinain	41720	31-03-2021	Under warranty	Not working
3	149365	Chest & TB	Pulse Oximeter, High End	Covidien	49404	28-06-2019	No warranty/ cmc/ amc	Not working
4	149366	Chest & TB	Pulse Oximeter, High End	Covidien	49404	28-07-2019	No warranty/ cmc/ amc	Not working
5	129400	PICU	Syringe Infusion Pump	Mindray	23800	02-02-2021	Under warranty	Not working
6	129399	PICU	Syringe Infusion Pump	Mindray	23800	02-02-2021	Under warranty	Not working
7	129572	Pediatric Ward	Multipara Monitor	Schiller	154000		No warranty/ cmc/ amc	Not working
8	129574	Pediatric Ward	Syringe Infusion Pump	Plenumtek	27699		Under warranty	Not working
9	177702	Blood Bank	Platelet Incubator	Remi	165000		Under warranty	Not working
10	177672	ENT OT	Micro Motor Drill	Stryker	1203111		Under warranty	Not working
11	177689	SNCU	Radiant Heat Warmer	Phoenix	26631	01-09-2019	Under warranty	Not working
12	177678	SNCU	Radiant Heat Warmer	Phonix Medical	26631	01-10-2019	Under warranty	Not working
13	177620	Pediatric Ward	Multipara Monitor	Schiller	154000		No warranty/ cmc/ amc	Not working
14	177697	Surgery OT	Bowl Steriliser	Geeta Industries Pvt. Ltd.	54700	13-10-2018	Under warranty	Not working
15	177798	SNCU	Radiant Heat Warmer	Phoenix Medical System	26631	01-10-2019	Under warranty	Not working

Sl. No.	Barcode No	Department	Device Name	Manufacturer	Purchase value (in ₹)	Installation Date	Contract Status	Current Status
16	177802	SNCU	Radiant Heat Warmer	Phoenix Medical System	26631	01-10-2019	Under warranty	Not working
17	177804	SNCU	Radiant Heat Warmer	Phoenix Medical System	26631	01-10-2019	Under warranty	Not working
18	177860	Plastic Surgery	Electro Surgical Unit, Bipolar/ Mono Polar	Covidien	624000	20-09-2018	No warranty/ cmc/ amc	Not working
19	150128	NICU	Cpap	Phoenix	250778	03-12-2019	Under warranty	Not working
20	150129	NICU	Cpap	Phoenix	250778	03-12-2019	Under warranty	Not working
21	177901	Male Surgery Ward	Sterilizer, Basic	Local	4660		No warranty/ cmc/ amc	Not working
22	177894	Male Surgery Ward	Patient Monitor	Schiller	120000	12-09-2019	Under warranty	Not working
23	114493	PICU	Multipara Monitor	Schiller	154000	18-08-2016	No warranty/ cmc/ amc	Not working
24	114491	PICU	Multipara Monitor	Schiller	154000	18-08-2016	No warranty/ cmc/ amc	Not working
25	113884	SNCU	Oxygen Concentrator	Longfian Scitech Co Ltd	25900	16-09-2015	Under warranty	Not working
26	115714	CICU	Monitor, Multipara, Cardiac Output	Mindray	795000	19-12-2018	Under warranty	Not working
27	115625	Radiology	Cr System Single Loader, With Printer	Fujifilm	1138673	01-02-2019	Under warranty	Not working
28	115626	Radiology	X-Ray Machine, 100ma	Skarray	264797	16-03-2018	Under warranty	Not working
29	114393	SNCU	Radiant Heat Warmer	Neotech	50410	15-02-2018	Under warranty	Not working
30	115768	CICU	Hospital Bed, Electronic	Medimek	85000	03-09-2019	Under warranty	Not working
31	115774	CICU	Hospital Bed, Electronic	Medimek	85000	03-09-2019	Under warranty	Not working
32	115776	CICU	Hospital Bed, Electronic	Medimek	85000	03-09-2019	Under warranty	Not working
33	115780	CICU	Hospital Bed, Electronic	Medimek	85000	03-09-2019	Under warranty	Not working

Sl. No.	Barcode No	Department	Device Name	Manufacturer	Purchase value (in ₹)	Installation Date	Contract Status	Current Status
34	115777	CICU	Hospital Bed, Electronic	Medimek	85000	03-09-2019	Under warranty	Not working
35	113868	CICU	Hospital Bed, Electronic	Medimek	85000	03-09-2019	Under warranty	Not working
36	115703	CICU	Hospital Bed, Electronic	Medimek	85000	03-09-2019	Under warranty	Not working
37	113297	CICU	Hospital Bed, Electronic	Medimek	85000	03-09-2019	Under warranty	Not working
38	115702	CICU	Hospital Bed, Electronic	Medimek	85000	03-09-2019	Under warranty	Not working
39	113291	CICU	Hospital Bed, Electronic	Medimek	85000	03-09-2019	Under warranty	Not working
40	113288	CICU	Hospital Bed, Electronic	Medimek	85000	03-09-2019	Under warranty	Not working
41	115452	NICU	Multipara Monitor	Schiller	154000	18-08-2016	No warranty/ cmc/ amc	Not working
42	115237	SNCU	Oxygen Concentrator	Longfian Scitech Co Ltd	25900	05-01-2014	Under warranty	Not working
43	115436	NICU	Syringe Infusion Pump	Plenum Tech Pvt Ltd	22300	17-02-2018	Under warranty	Not working
44	124665	Gynecology	Fetal Monitor	Bpl Medical Technologies	8840	04-10-2018	Under warranty	Not working
45	115427	Casualty	Ecg Machine 6 Channel	Contech	43658	28-02-2019	Under warranty	Not working
46	115553	Casualty	Ecg Machine 6 Channel	Contech	43658	28-02-2019	Under warranty	Not working
47	124577	Ophthalmology	Microscope, Operating, Ophthalmic	Topcon	700000	27-12-2017	No warranty/ cmc/ amc	Not working
48	124667	Gynecology	Multipara Monitor	Schiller	287350	06-02-2019	No warranty/ cmc/ amc	Not working
49	124671	Gynecology	Multipara Monitor	Schiller	287350	06-02-2019	Under warranty	Not working
50	124601	Ophthalmology	Auto Refractometer/Keratometer	Unicos	294636	18-01-2018	Under warranty	Not working
51	124700	Gynecology	Ot Stand Light Single Dome/Movable	Dr. Mach	575000	16-01-2018	Under warranty	Not working

Sl. No.	Barcode No	Department	Device Name	Manufacturer	Purchase value (in ₹)	Installation Date	Contract Status	Current Status
52	124697	Gynecology	Ot Light, Ceiling, Dual Dome	Dr-Mach	2048000	08-08-2018	Under warranty	Not working
53	124727	Physiotherapy	Traction Machine	Akay Hi-Trac Unit	35000		No warranty/ cmc/ amc	Not working
54	115562	Orthopedic OT	C Arm Image Intensifier, Basic	Kiran	1448113	01-05-2018	Under warranty	Not working
55	114553	Surgery T	Operating Table, Electro Hydraulic	Palakkad Surgical	274000	01-11-2018	Under warranty	Not working
56	114544	Emergency OT	Operating Table, Electro Hydraulic	Palakkad Surgical	274000	01-11-2018	Under warranty	Not working
57	114555	Surgery OT	Anaesthesia Workstation	Meditec England	590000	01-02-2019	Under warranty	Not working
58	115283	ENT OT	Cold Light Source	Sure Well	32000		No warranty/ cmc/ amc	Not working
59	134046	Pathology	Centrifuge 8 Tube	Remi	30100		No warranty/ cmc/ amc	Not working
60	115274	ENT OT	Anaesthesia Workstation	Meditec England	590000	01-02-2019	Under warranty	Not working
61	114548	Emergency OT	Anaesthesia Workstation	Meditec England	590000	31-12-2018	Under warranty	Not working
62	115637	Minor OT	Anaesthesia Workstation	Meditec England	590000	01-02-2019	Under warranty	Not working
63	115524	Orthopedic OT	Operating Table, Electro Hydraulic	Benq Medical	1815254	10-10-2018	Under warranty	Not working
64	115299	Orthopedic OT	Anaesthesia Workstation	Meditec England	590000	31-12-2018	Under warranty	Not working
65	124608	Orthopedic OT	Operating Table, Electronic	Benq Medical	1815254	10-10-2018	Under warranty	Not working
Total					20602202			

(Source: Data supplied by MKCG MCH, Berhampur)

Appendix 5.1
(Refer Paragraph 5.1.7.1)
Availability of beds in DHHs, as on 31 March 2022

Sl. No.	DHHs	Sanctioned Beds	Functional Beds
1	Angul	300	444
2	Balasore	330	773
3	Bargarh	91	300
4	Bhadrak	191	336
5	Bolangir	212	500
6	Boudh	93	162
7	Cuttack	130	130
8	Deogarh	200	200
9	Dhenkanal	300	300
10	Gajapati	111	161
11	Ganjam	137	172
12	Jagatsinghpur	300	190
13	Jajpur	201	305
14	Jharsuguda	116	300
15	Kalahandi	330	377
16	Kandhamal	186	236
17	Kendrapara	250	195
18	Keonjhar	330	460
19	Khurda	158	205
20	Koraput	250	221
21	Malkangiri	200	376
22	Mayurbhanj	255	659
23	Nabarangpur	200	252
24	Nayagarh	250	188
25	Nuapada	120	315
26	Puri	280	451
27	Rayagada	99	229
28	Sambalpur	271	325
29	Subarnapur	110	192
30	Sundargarh	330	330
31	Capital Hospital	557	750
32	RGH Rourkela	400	437
	TOTAL	7,288	10,471

(Source: Data furnished by DHS, Odisha and DHHs)

Appendix 6.1
(Refer Paragraph 6.3.2.4)
Irregular payments made to M/s Neelachal Hospital

Sl. No.	Name of patient	Date of Admission	Date of Discharge	Report of MO, Balakati as on 14-7-21	DCH claimed	No of days stayed	Fraudulently Claimed (Amount in ₹)	Report of MO,CHC Balakati
1.	***** Das	23-6-21	10-8-21	General	Fully HDU	49	4,04,250	Semicritical, 2lt Oxygen
2.	***** Prusty	25-6-21	10-8-21	General	Fully HDU	47	3,87,750	Stable, Room air
3.	***** Mallick	26-6-21	11-8-21	General	Fully HDU	47	3,87,750	Stable, Room air
4.	***** Nayak	27-6-21	26-7-21	General	Fully ICU	30	3,07,500	Stable, 2lt Oxygen
5.	***** Mansingh	27-6-21	26-7-21	General	Fully HDU	30	2,47,500	Stable, Room air
6.	***** Barik	28-6-21	13-8-21	General	Fully HDU	47	3,87,750	Stable, 2lt Oxygen
7.	***** Digal	29-6-21	15-8-21	General	Fully HDU	48	3,96,000	Semicritical, 2lt Oxygen
8.	***** Sahoo	29-6-21	15-8-21	General	Fully HDU	48	3,96,000	Stable, Room air
9.	***** Bhoi	1-7-21	15-8-21	General	Fully HDU	46	3,79,500	Stable, Room air
10.	***** Nayak	3-7-21	10-8-21	General	Fully HDU	39	3,63,000	Stable, Room air
11.	***** Mahakud	3-7-21	27-7-21	General	Fully HDU	25	2,06,250	Stable, Room air
12.	***** Patra	6-7-21	15-8-21	General	Fully ICU	41	4,20,250	Stable, Room air
13.	***** Ray	6-7-21	18-8-21	HDU	Fully ICU	44	18,000	Critical
14.	***** Harichandan	5-7-21	14-8-21	HDU	Fully ICU	41	20,000	Critical
15.	***** Pradhan	2-7-21	11-8-21	HDU	Fully ICU	41	26,000	Critical
16.	***** Mangaraj	1-7-21	9-8-21	HDU	Fully ICU	40	28,000	Critical
17.	***** Sahoo	30-6-21	26-7-21	HDU	Fully ICU	27	54,000	Room Air, semi critical

Sl. No.	Name of patient	Date of Admission	Date of Discharge	Report of MO, Balakati as on 14-7-21	DCH claimed	No of days stayed	Fraudulently Claimed (Amount in ₹)	Report of MO,CHC Balakati
18.	***** Khatai	30-6-21	27-7-21	HDU	Fully ICU	28	56,000	Room Air, semi critical
19.	***** Roula	28-6-21	12-8-21	HDU	Fully ICU	46	92,000	Critical
20.	*****	6-7-21	1-8-21	-	ICU	27	3,32,000	Admission after scheduled date
21.	***** Swain	6-7-21	14-8-21	-	ICU	40	4,80,000	Admission after scheduled date
22.	***** Dash	6-7-21	15-8-21	-	ICU	41	4,92,000	Admission after scheduled date
23.	***** Mohanty	6-7-21	15-8-21	-	ICU	41	4,92,000	Admission after scheduled date
24.	***** Parida	6-7-21	15-8-21	-	HDU	41	4,10,000	Admission after scheduled date
25.	***** Pal	6-7-21	15-8-21	-	HDU	41	4,10,000	Admission after scheduled date
26.	***** Behera	6-7-21	15-8-21	-	ICU	41	4,92,000	Admission after scheduled date
27.	***** Rao	6-7-21	15-8-21	-	ICU	41	4,92,000	Admission after scheduled date
28.	***** Patra	6-7-21	15-8-21	-	ICU	41	4,92,000	Admission after scheduled date
29.	***** Ray	6-7-21	15-8-21	-	ICU	41	4,10,000	Admission after scheduled date
30.	***** Muduli	6-7-21	30-7-21	-	ICU	25	3,07,000	Admission after scheduled date
Total							93,86,500	

(Source: Data provided by the test-checked DCHs)

Appendix 6.2
(Refer Paragraph 6.3.2.9)
Inadmissible payments made towards more bed occupancy

Sl. No.	Name of the Hospital	Period	Number of days claimed	ICU beds approved	Actual Bed days	Bed days claimed	Excess bed days claimed	Excess amount claimed (In ₹)
1	SUM	1-9-20 to 30-9-20	30	125	3,750	3,911	161	19,32,000
2	Ashwini	16-8-20 to 31-8-20	16	30	480	524	44	5,28,000
3	Ashwini	1-9-20 to 15-9-20	15	30	450	484	34	4,08,000
4	Ashwini	16-9-20 to 30-9-20	15	30	450	484	34	4,08,000
5	Ashwini	1-10-20 to 15-10-20	15	30	450	471	21	2,52,000
6	Ashwini	16-10-20 to 31-10-20	16	30	480	492	12	1,44,000
Total					6,060	6,366	306	36,72,000

(Source: Data provided by the test-checked DCHs)

Appendix 7.1
(Refer Paragraph 7.2.1)
Ayushman Bharat (Operationalisation of Health and Wellness centres)

Sl. No.	District	Number of SCs	Target for converting SC into HWC by March 2022	SCs converted into HWC by March 2022	PHCs/Other Hospitals	Target for converting PHC+OH into HWC by March 2022	PHCs +OH converted into HWC by March 2022	Number of UPHC	Target for converting UPHC into HWC by March 2022	UPHCs converted into HWC by March 2022
1	Angul	166	92	58	31	31	29	1	1	1
2	Bolangir	226	121	111	46	46	44	2	2	2
3	Balasore	275	137	141	71	71	68	3	3	3
4	Bargarh	204	106	130	47	47	45	2	2	2
5	Boudh	67	37	32	12	12	12	0	0	0
6	Bhadrak	178	85	51	52	52	51	3	3	3
7	Cuttack	332	184	72	59	59	56	13	13	13
8	Deogarh	42	23	29	8	8	8	0	0	0
9	Dhenkanal	167	88	86	37	37	35	1	1	1
10	Gajapati	136	78	83	21	21	21	1	1	1
11	Ganjam	460	246	178	93	93	86	8	8	8
12	Jagatsinghpur	189	104	98	35	35	33	1	1	1
13	Jajpur	260	133	116	62	62	59	0	0	0
14	Jharsuguda	66	33	56	17	17	16	4	4	4
15	Kalahandi	242	133	130	45	45	45	1	1	1
16	Kandhamal	172	89	109	40	40	40	1	1	1
17	Kendrapara	227	122	100	46	46	46	1	1	1
18	Keonjhar	351	192	169	66	66	66	3	3	3
19	Khurda	202	102	118	50	50	47	24	24	24
20	Koraput	307	175	111	48	48	47	4	4	4
21	Malkangiri	158	88	47	27	27	24	1	1	1
22	Mayurbhanj	589	336	290	86	86	85	3	3	3
23	Nabarangpur	289	167	107	41	41	38	1	1	1
24	Nayagarh	166	86	90	38	38	37	0	0	0
25	Nuapada	95	52	68	17	17	17	0	0	0

Sl. No.	District	Number of SCs	Target for converting SC into HWC by March 2022	SCs converted into HWC by March 2022	PHCs/Other Hospitals	Target for converting PHC+OH into HWC by March 2022	PHCs +OH converted into HWC by March 2022	Number of UPHC	Target for converting UPHC into HWC by March 2022	UPHCs converted into HWC by March 2022
26	Puri	241	131	121	47	47	43	5	5	5
27	Rayagada	235	133	136	38	38	36	3	3	3
28	Sambalpur	167	93	73	29	29	26	8	8	8
29	Subarnapur	89	46	68	20	20	20	0	0	0
30	Sundargarh	390	222	164	59	59	55	12	12	12
Total		6688	3634	3142	1288	1288	1235	106	106	106

(Source: Data obtained from NHM, Odisha)

Appendix 8.1
(Refer Paragraph 8.2.2)
Inspection of the test-checked CEs

Sl. No.	Name of the clinical Establishment	Display of certificates, like CE registration, PCPNDT, etc. & rate chart in the clinic premises for public knowledge (as per Odisha Clinical Establishment Rules, 2018)	Maintenance of records	Others
1	Salandi Hospital, Bhadrak	Only PC-PNDT Certificate	OPD, IPD and OT registers were maintained. Medico legal case register, Register of staff engaged, deployed, on call and consultants, Acquaintance Ledger, showing payment to Doctors, paramedical and other staff and Register showing the list of doctors/ staff attending the Clinical Establishments, were not made available.	
2	Sonocare Ultrasound Clinic, Bhadrak	Only Rate chart displayed	Patient registers were maintained.	
3	SR Dr Micro Diagnostics and Analytica, Bhadrak	Only registration of CE displayed	Patient registers were maintained, both online and offline	
4	Zass Midtown Hospital, Bhadrak	No certificates displayed	OPD, IPD and OT registers were maintained. Medico legal case register, Register of staff engaged, deployed, on call and consultants, Acquaintance Ledger, showing payment to Doctors, paramedical and other staff and Register showing the list of doctors/staff attending the Clinical Establishments, were not made available.	There was one ICU bed in the hospital
5	New Omm Shanti Diagnostic Centre, Bhadrak	All certificates displayed	Patient registers were maintained.	
6	Shree Jagannath Hospital, Dhenkanal	Only Registration Certificate and Approved Rate Chart displayed.	OPD, IPD and OT registers were maintained. Medico legal case register, Register of staff engaged, deployed, on call and consultants, Registers showing the list of doctors/staff attending	

Sl. No.	Name of the clinical Establishment	Display of certificates, like CE registration, PCPNDT, etc. & rate chart in the clinic premises for public knowledge (as per Odisha Clinical Establishment Rules, 2018)	Maintenance of records	Others
			the Clinical Establishment and Complaint Register, were not maintained.	
7	Shree Krishna Ultrascan, Dhenkanal	Only PCPNDT Certificate and Rate chart displayed	Patient registers were maintained.	
8	S.R. Laboratory, Dhenkanal	Registration Certificate and Approved Rate Chart displayed	Patient register was maintained online.	
9	New Hope Nursing Home, Dhenkanal	Only Registration Certificate and SPCB authorization displayed.	OPD, IPD and OT register were maintained. Medico legal case register, Register of staff engaged, deployed, on call and consultants, Acquaintance Ledger showing payment to Doctors, paramedical and other staff and Register showing the list of doctors/staff, attending the Clinical Establishment, were not maintained.	
10	Sun Hospital, Dhenkanal	All certificates, except Trade License displayed	OPD Register (Computerised), IPD Register, OT Register, Death Register, Register of staff engaged, deployed, on call and Consultants and Acquaintance Ledger were maintained. Medico Legal Case Register was not maintained.	
11	Mother Sai Pathological, Sundargarh	No certificates displayed	Laboratory register was maintained	Shifted to new premises but online application of shifting of premises awaited.
12	Aastha Mother and child care hospital, Rourkela	Trade license, Fire Safety certificate not displayed	Medico Legal Case Register and register showing government doctors attending the clinical establishments, was not maintained	

Sl. No.	Name of the clinical Establishment	Display of certificates, like CE registration, PCPNDT, etc. & rate chart in the clinic premises for public knowledge (as per Odisha Clinical Establishment Rules, 2018)	Maintenance of records	Others
13	Vesaj Patel Hospital, Rourkela	No certificates displayed	Medico Legal Case register and register on staff engaged on call and acquaintance register showing payment to doctors and staff was not maintained.	Fire Safety certificate not obtained, Trade License expired, Pollution certificate expired on 31.03.2022
14	Samaleswari Hospital, Sundargarh	All certificated displayed	Medico Legal Case Register was not maintained.	
15	Maa Anapurna Diagnostic, Sundargarh	Rate Chart not available	Ultrasound register was maintained.	

(Source: Joint Physical Inspection along with departmental officials)