

Appendices

Appendices

Appendix-1.1

(Refer paragraph: 1.8; page 4)

Year-wise break up of outstanding Inspection Reports/ Paragraphs as on 31 March 2018 of selected Drawing and Disbursing Officers

(₹ in crore)

Period	Social Justice and Empowerment Department		
	IRs	Paras	Amount
Upto March 2008	48	82	1.55
2008-09	1	2	0.21
2010-11	6	7	9.57
2011-12	9	15	4.06
2012-13	22	55	44.56
2013-14	16	25	2.15
2014-15	7	14	0.74
2015-16	20	54	121.90
2016-17	9	31	45.31
Total	138	285	230.05

Appendix-1.2

(Refer paragraph: 1.8; page 4)

Statement showing irregularities commented upon in the outstanding Inspection Reports and Paragraphs as on 31 March 2018

(₹ in crore)

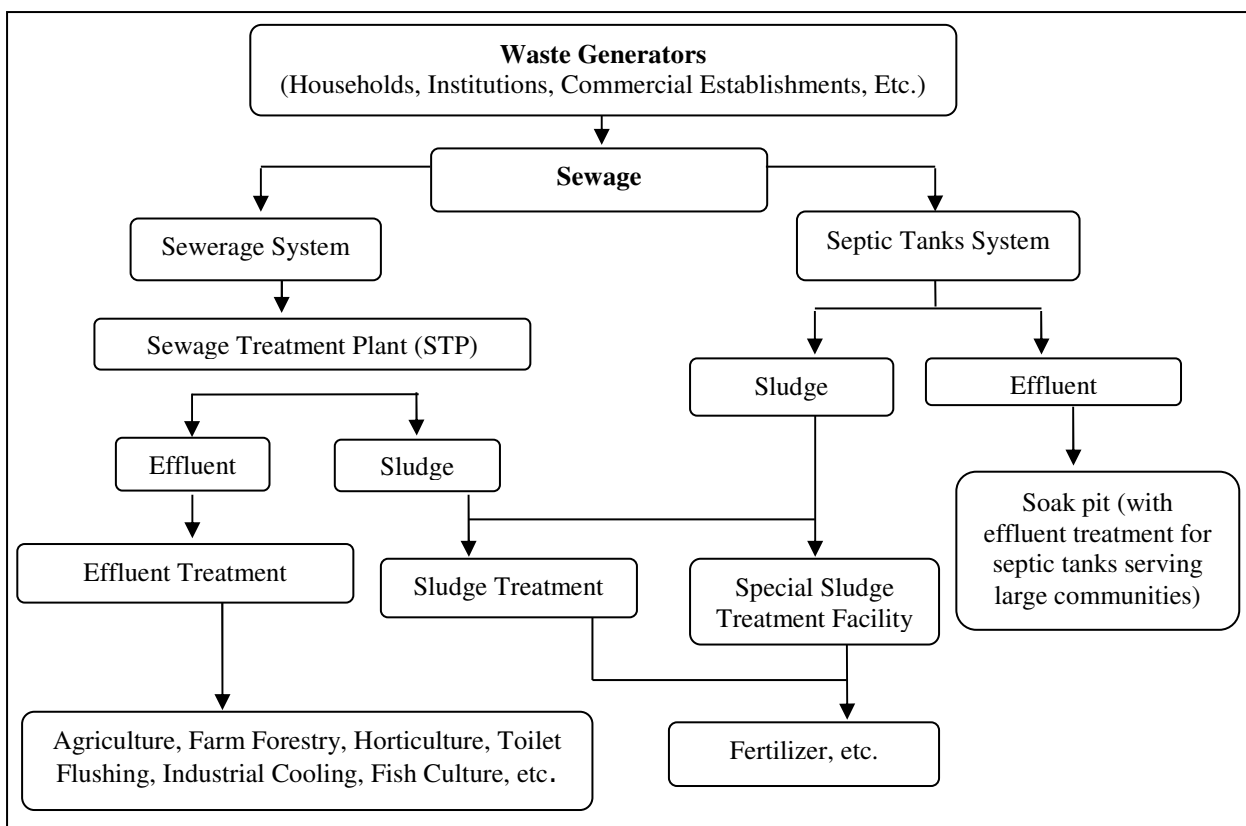
Sl. No.	Types of Irregularities	Social Justice and Empowerment Department	
		Para	Amount
1.	Drawal of funds in advance of requirements/ blocking of funds	74	79.23
2.	Non-adjustment of advances	06	69.29
3.	Excess/ unauthorised/ irregular expenditure for want of sanctions	45	19.02
4.	Wasteful/ in fructuous/ unfruitful expenditure	24	18.22
5.	Diversion of funds	02	0.14
6.	Overpayments, non-recovery of rent/ advances/ miscellaneous recoveries	35	0.12
7.	Non-production of actual payees receipts	02	0.00
8.	Outstanding loans	01	0.01
9.	Idle machinery/ equipment including vehicles	01	0.36
10.	Non-accountal/ shortage of stores	12	0.08
11.	Misappropriation of stores/ cash/ funds	08	0.21
12.	Incomplete abandoned works	12	11.87
13.	Loss/ theft/ embezzlement/ defalcations, avoidable expenditure, etc.	10	3.21
14.	Non-production of UCs	04	15.17
15.	Non-disposal of unserviceable articles of stores	05	0.17
16.	Non-reconciliation with treasuries/ banks	01	0.01
17.	Non-utilisation of grants-in-aid	05	1.37
18.	Non-deposits/ refund of interest/ unspent amounts in treasuries/ sanctioning authority	11	1.48
19.	Miscellaneous irregularities	27	10.09
Total		285	230.05

Appendix-2.1

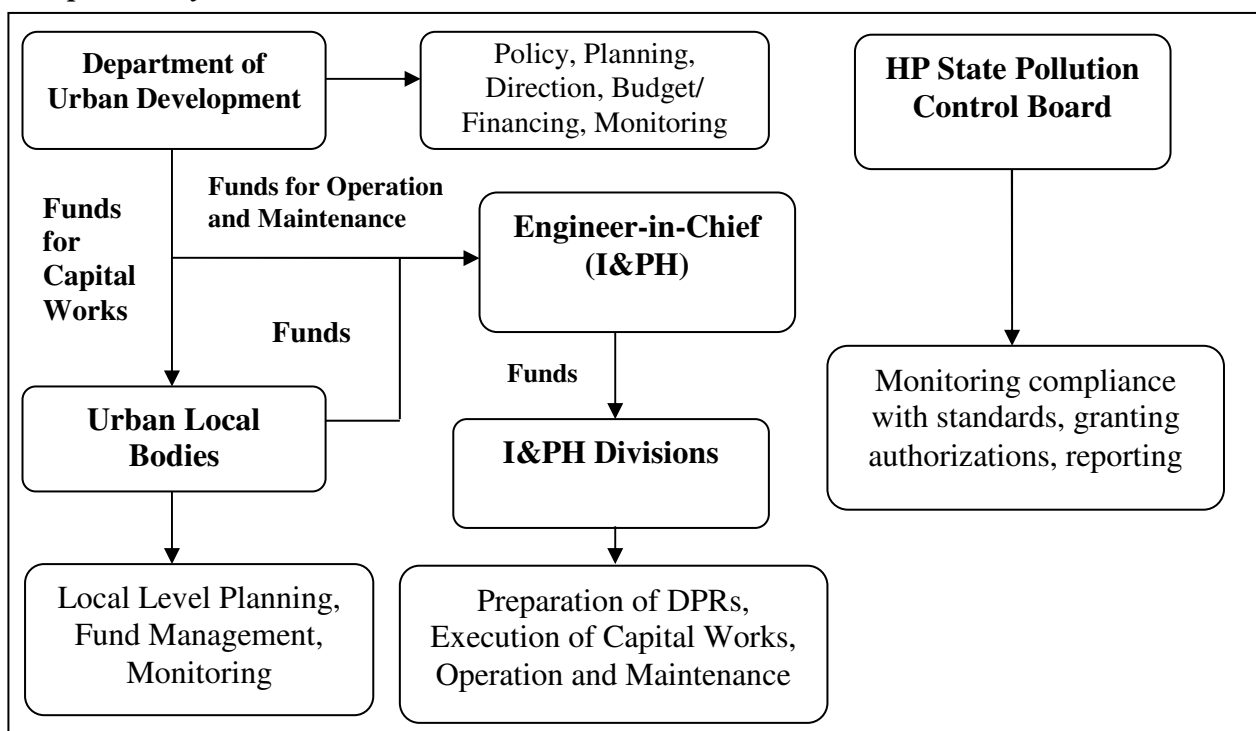
(Refer paragraph: 2.2.1; page 34)

Flow chart showing Sewage Management Process and responsibility framework

Sewage Management Process



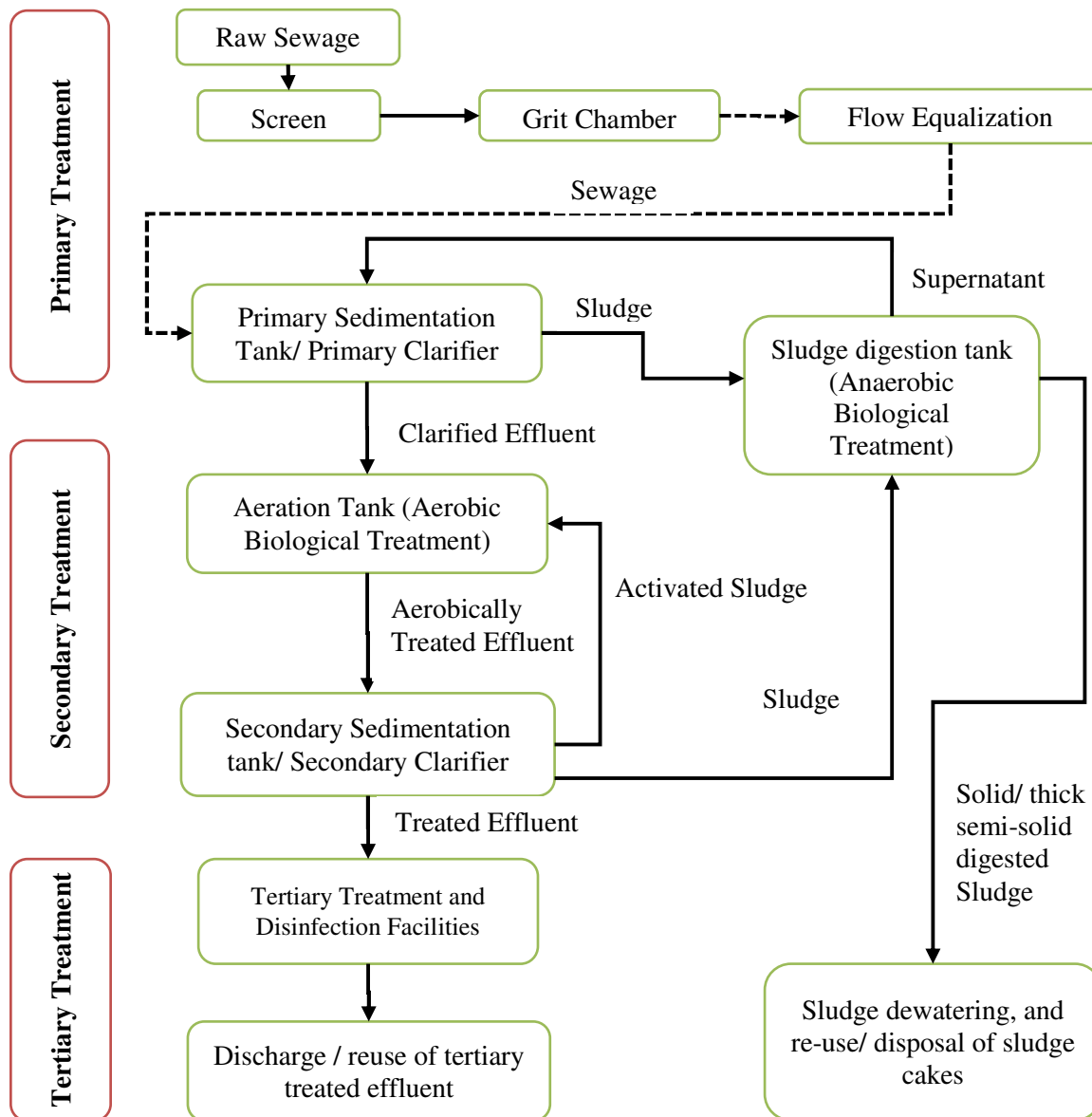
Responsibility Framework



Appendix-2.2

(Refer paragraph: 2.2.9; page 47)

Flow chart showing process of sewage treatment and disposal in STP



Appendix-3.1

(Refer paragraph: 3.2; page 62)

Shortfalls of deliverables under "Community Led Assessment, Awareness, Advocacy and Action Programme (CLAP)"

Sl. No.	Deliverables as recorded in MOU	Status/ shortfall
1.	Creation of design and finalisation of action plans for the programme.	This has not been done.
2.	Training and capacity building of 'Coordination Agencies' selected Field Implementation Agencies (FIAs) undertaken/ upgraded.	Screening of Eco-clubs, <i>Mahila Mandals</i> was not undertaken for training.
3.	Training tools/ kits for 'Coordination Agencies' selected Field Implementation Agencies (FIAs) developed and implemented.	Training of FIAs selected for programme implementation was undertaken. However, as stipulated in the MOU, 500 carbon calculators (against 36,000) were distributed and no coliform vials (against 7,200) were distributed.
4.	Assessment and documentation of the existing environmental quality and carbon foot prints of all the Panchayats, Urban Local Bodies, Blocks, and Districts through network of Eco-clubs, <i>Mahila Mandals</i> , NGOs etc.	Out of 3,243 Panchayats in the State assessment of existing environmental quality was made in 562 (17 <i>per cent</i>) Panchayats and documentation was completed in 374 (12 <i>per cent</i>) Panchayats and none of the ULBs was assessed and documented. However, verifiable evidence of the work done by the Programme Management Agency was not on records of the Department.
5.	Preparation of thematic data base on environment and carbon footprints documented and prepared.	Thematic data base of environment and carbon foot prints was not prepared as the same was not possible without full data in respect of all Panchayats and ULBs.
6.	Preparation of seasonal and annual environmental status maps and reports.	
7.	Awareness generation of at least 30 <i>per cent</i> of concerned stakeholders (Panchayats and ULBs).	
8.	Veritable improvements in the environmental quality and reduction in the carbon footprints of the Panchayats, Urban Local Bodies, Blocks, and Districts.	Not started. This could be undertaken only after substantial advancement of action component of the project.
9.	Establishment of sustainable systems and mechanism to sustain the endeavour even after the completion of project/ programme.	
10.	Ongoing capacity for the continuity of the programme is established.	
11.	Requisite audio visual publicity material developed/ generated and disseminated.	
12.	State and District level advocacy activities undertaken.	The PMA had disseminated three videos about the programme to FIAs in covered Panchayats. None of ULBs was covered.
13.	Development of monitoring and evaluation strategy for all the three phases of programme.	The advocacy activities undertaken have been limited to organisation of official meetings. A State level meet-cum-advocacy workshop was organised in October 2009. Two State Steering Committee meetings and one District Steering Committee meeting in each district was held.
14.	Documentation of experience and learning and its sharing with stakeholders undertaken.	Monitoring and evaluation strategy for each of the phases of the programme was not developed and shared with the Department.
		Not started as this could be undertaken after completion of substantive part of the project.

Appendix-3.2

(Refer paragraph: 3.6.3.4; page 84)

Details regarding short/ non-supply/ excess supply/ supply without demand of medicines to test-checked health institutions during 2016-18

Details regarding short-supply of medicines against demand during 2016-18

Sl. No.	Name of Health Institution	Year	Sl. No.	Name of Medicine	Quantity demanded	Quantity received	Difference
1.	BMO Kotli, Mandi	2017-18	1.	Inj. Gentamycin	300	200	100
			2.	Inj. Ceftriaxone	2000	1860	140
			3.	Inj. Oxytocin	250	235	15
			4.	Inj. Pantoprazole	3000	155	2845
			5.	Tab. Domperidone	15000	4000	11000
			6.	Tab. Azithromycin	50000	10000	40000
			7.	Tab. B-Complex	80000	42000	38000
			8.	Tab. Albendazole	40000	12400	27600
			9.	Tab. Metronidazole	70000	30000	40000
			10.	Tab. Ranitidine	80000	58000	22000
			11.	Cough Syrup	15000	2000	13000
				355550	160850	194700 (55%)	
2.	BMO Rohanda, Mandi	2017-18	1.	Inj. Gentamycin	907	452	455
			2.	Inj. Ceftriaxone	870	400	470
			3.	Inj. Pantoprazole	19400	6330	13070
			4.	Tablet Folic Acid	118700	30000	88700
			5.	Tab. Diclomine	58900	29100	29800
			6.	Tab. Domperidone	21350	4500	16850
			7.	Tab. Azithromycin	73000	11300	61700
			8.	Tab. B-Complex	154500	13000	141500
			9.	Tab. Paracetamol	111000	104000	7000
			10.	Tab. Albendazole	36570	3900	32670
			11.	Tab. Cetirizine	680000	12245	667755
			12.	Tab. Clotrimazole	16320	10000	6320
			13.	Tab. Metronidazole	32400	18600	13800
			14.	Tab. Ranitidine	64340	18200	46140
			15.	Cough syrup	10290	2800	7490
			16.	Vitamin A	557	300	257
				1399104	265127	1133977 (81%)	
3.	BMO Kihar, Chamba	2017-18	1.	Inj. Gentamycin	1750	1660	90
			2.	Inj. Diazepam	380	350	30
			3.	Tab. B-Complex	200000	144800	55200
			4.	Tab. Paracetamol	25000	11690	13310
			5.	Tab. Albendazole	40000	26000	14000
			6.	Tab. Cetrizine	60000	57000	3000
			7.	Tab. Clotrimazole	20000	14000	6000
			8.	Tab. Metronidazole	50000	45000	5000
			9.	Tab. Ranitidine	50000	48300	1700
			10.	Cough Syrup	5000	2540	2460
				452130	351340	100790 (22%)	
4.	BMO Samote, Chamba	2017-18	1.	Inj. Gentamycin	10000	500	9500
			2.	Tab. Dicyclomine	50000	20000	30000
			3.	Tab. Domperidone	40000	20000	20000
			4.	Tab. Atenolol	80000	52920	27080
			5.	Tab. Metronidazole	60000	33600	26400
			6.	Cough Syrup	8000	4000	4000
				248000	131020	116980 (47%)	
5.	SDH Baijnath, Kangra	2016-17	1.	Tab. Atenolol 50 mg	10000	5000	5000
			2.	Tab. Zinc Sulphate 20mg	5000	3000	2000
			3.	Inj. Adrenaline	200	150	50
		2017-18	4.	Inj. ARV (Anti Rabies Vaccine)	1200	600	600
			5.	Povidone Iodine solution 5%	500	20	480
				16900	8770	8130 (48%)	
6.	SDH Nurpur, Kangra	2016-17	1.	Inj. Ringer Lactate	10000	1400	8600
			2.	Tab. Atonlol 50 mg	10000	7800	2200
					20000	9200	10800 (54%)

Audit Report- Social, General and Economic Sectors (Non-PSUs) for the year ended 31 March 2018

7.	CHC Shahpur, Kangra	2017-18	1.	Tab Vitamin B complex	222000	80000	142000
			2.	IV set adult	5000	1250	3750
			3.	Surgical suture 1/0	425	10	415
					227425	81260	146165 (64%)
8.	CHC Indora, Kangra	2017-18	1.	Cap. Doxycyclin 100 mg	210000	15000	195000
			2.	Inj. Antisnake venom	315	230	85
					210315	15230	195085 (93%)
9.	CHC Gangath, Kangra	2017-18	1.	Gamma Benzene Hexachloride	2000	720	1280
			2.	Syp. Paracetamol 60 ml	30000	13000	17000
					32000	13720	18280 (57%)
10.	CHC Bhawarna Kangra	2017-18	1.	Tab Atenolol 50 mg	150000	105840	44160 (29%)
11.	PHC Mahakal, Kangra	2016-17	1.	Ciprofloxacin eye drops	9000	3000	6000
			2.	IV set	3000	500	2500
		2017-18	3.	Tab Metronidazole 400 mg	54000	1000	53000
			4.	Adhesive Plaster 5X5	400	150	250
			5.	Inj. Metronidazole IV	1200	50	1150
					67600	4700	62900 (93%)
12.	PHC Tiara, Kangra	2017-18	1.	Silver Sulphadiazine cream	800	40	760
			2.	Syp. Albendazole 10 ml	5000	1800	3200
					5800	1840	3960 (68%)
13.	CH Thural, Kangra	2016-17	1.	Tab Pentaprozol 40 mg	200000	155000	45000 (23%)
14.	CHC Jari, Kullu	2017-18	1.	Atenolol 50 mg	5000	4200	800
			2.	Phinarmine Maleate Inj.	400	100	300
			3.	Syp. Domperidon	500	400	100
			4.	Inj. Metaclopramide	1000	600	400
			5.	Inj. Etophylline	100	70	30
			6.	Povidone Iodine Solution	50	20	30
					7050	5390	1660 (24%)
15.	BMO Naggar, Kullu	2016-17	1.	Metformin Tablet 500 mg	20000	1000	19000
			2.	Inj. Vitamin K	200	100	100
			3.	Tab Diclofenac Sodium	30000	20000	10000
			4.	Cap Doxycycline	25000	15000	10000
			5.	Tab Azithromycin 500 mg	15000	12000	3000
			6.	Tab Metronidazole 400 mg	25000	20000	5000
			7.	Cefixime	10000	2000	8000
			8.	Tab Albendazole 400 mg	5000	4800	200
			9.	Inj. Diazepam	3000	230	2770
					133200	75130	58070 (44%)
16.	CH Manali, Kullu	2017-18	1.	Pantoprazole Inj.	200	100	100
			2.	Adrenaline Inj.	50	02	48
			3.	Hydrocortisone Inj.	200	80	120
			4.	Inj. Diclofenac Sodium	500	100	400
			5.	Inj. Etophylline + Theophylline	100	10	90
					1050	292	758 (72%)
17.	BMO Anni, Kullu	2016-17	1.	Tab Atenolol 50 mg	75000	7000	68000 (91%)
18.	BMO Banjar, Kullu	2016-17	1.	Tab Atenolol 50 mg	14000	340	13660 (98%)
19.	CH Banjar, Kullu	2016-17	1.	Tab Glimipride 1 mg	15500	3000	12500
			2.	Tab Albendazole 400 mg	8000	4100	3900
					23500	7100	16400 (70%)
20.	CH Nirmand, Kullu	2016-17	1.	Tab Atenolol 50 mg	40000	2100	37900
			2.	Tab Albendazole 400 mg	10000	2000	8000
					50000	4100	45900 (92%)
21.	PHC Garsa, Kullu	2016-17	1.	Inj. Adrenaline	20	10	10
			2.	Syp. PCM	2000	100	1900
			3.	Tab Atenolol 500 mg	2000	1400	600
			4.	Inj. Fortwin	50	10	40
			5.	Inj. Diclofenac Sodium	5000	1000	4000
			6.	Syp. Albendazole	200	50	150
			7.	Tab Azithromycin 500 mg	5000	3000	2000
		2017-18	8.	Tab Cetrizine 10 mg	10000	8000	2000
		24270	13570	10700 (44%)			
Grand Total					3712894	1416819	2296075 (62%)

Details regarding non-supply of medicines against demand during 2016-18

Sl. No.	Name of Health Institution	Year	Sl. No.	Name of Medicine	Quantity demanded	Quantity received	Difference
1.	BMO Kotli, Mandi	2017-18	1.	Inj. Ampicillin	500	0	500
			2.	Inj. Diazepam	100	0	100
			3.	Tab Dicyclomine	40000	0	40000
			4.	Tab Atenolol	10000	0	10000
			5.	Tab Cetrizine	70000	0	70000
			6.	Vitamin A	500	0	500
					121100	0	121100 (100%)
2.	BMO Kihar, Chamba	2017-18	1.	Inj. Ampicillin	200	0	200 (100%)
3.	BMO Samote, Chamba	2017-18	1.	Inj. Oxytocin	1000	0	1000
			2.	Tab. Folic Acid	50000	0	50000
			3.	Tab. B-Complex	200000	0	200000
			4.	Tab. Paracetamol	150000	0	150000
			5.	Tab. Ranitidine	50000	0	50000
					451000	0	451000 (100%)
4.	SDH Nurpur, Kangra	2017-18	1.	Inj. Atropine Sulphate	1000	0	1000
			2.	Inj. Diazepam	1500	0	1500
					2500	0	2500 (100%)
5.	CH Fatehpur, Kangra	2017-18	1.	Vit. A solution 50 ml	500	0	500 (100%)
6.	CHC Jari, Kullu	2017-18	1.	Tab Ranitidine 150 mg	20000	0	20000
			2.	Lotion Gamma Benzene	500	0	500
			3.	Inj. Oxytocine 1 ml	200	0	200
			4.	Inj. Diazepam	100	0	100
			5.	Inj. Vitamin K	100	0	100
			6.	Inj. Metronidazole 100 ml	600	0	600
					21500	0	21500 (100%)
7.	BMO Naggar, Kullu	2016-17	1.	Lotion Gamma Benzene	3000	0	3000
			2.	Inj. Frusemide	500	0	500
			3.	Tab Phenotoin Sodium	2000	0	2000
			4.	Inj. Adrenaline	100	0	100
			5.	Tab Domperidone	4000	0	4000
			6.	Tab Vit. B Complex	30000	0	30000
					39600	0	39600 (100%)
8.	CH Manali, Kullu	2016-17	1.	Inj. Dopamine	10	0	10
			2.	Inj. Ethamsylate	10	0	10
			3.	Isolyte-P (IV Fluid)	50	0	50
			4.	Inj. Paracetamol	200	0	200
					270	0	270 (100%)
9.	PHC Garsa, Kullu	2016-17	1.	Inj. Oxytocin	10	0	10
		2017-18	2.	Inj. Dextrose 5%	150	0	150
			3.	IV Ringer Lactate	150	0	150
			4.	Tab Sodium Valporate	100	0	100
			5.	Tab Folic Acid	5000	0	5000
					5410	0	5410 (100%)
					642080	0	642080 (100%)

Details regarding excess supply of medicines against demand during 2016-18

Sl. No.	Name of Health Institution	Year	Sl. No.	Name of Medicine	Quantity demanded	Quantity received	Difference
1.	BMO Kotli, Mandi	2017-18	1.	Tab. Folic Acid	50000	102000	52000
			2.	Tab Paracetamol	200000	228000	28000
			3.	Tab Clotrimazole	1000	3000	2000
					251000	333000	82000 (33%)
2.	BMO Rohanda, Mandi	2017-18	1.	Inj. Ampycillin	70	400	330
			2.	Tab Atenonol	8100	18800	10700
					8170	19200	11030 (135%)

Audit Report- Social, General and Economic Sectors (Non-PSUs) for the year ended 31 March 2018

3.	BMO Samote, Chamba	2017-18	1.	Tab Azithromycin	10000	11200	1200
			2.	Tab Albendazole	20000	25200	5200
					30000	36400	6400 (21%)
4.	CHC Jari, Kullu	2017-18	1.	Inj. Frusimide	100	120	20 (20%)
5.	BMO Naggar, Kullu	2016-17	1.	Inj. Atropine	500	1500	1000
			2.	Inj. Gentamycin	1000	2000	1000
					1500	3500	2000 (133%)
6.	CH Manali, Kullu	2016-17	1.	IV Ringer Lactate	400	825	425
			2.	Inj. Pentoprazole	200	240	40
			3.	Tab Metornidazole 400 mg	2000	14000	12000
					2600	15065	12465 (479%)
7.	BMO Anni, Kullu	2016-17	1.	Tab Amlodipine 5 mg	30000	45000	15000 (50%)
8.	RH Kullu	2016-17	1.	Tab Amlodipine 5 mg	1300	10000	8700 (669%)
9.	CH Nirmand, Kullu	2016-17	1.	Tab Glimipride 1 mg	5000	6500	1500
			2.	Inj. Oxytocin 1 ml	400	500	100
					5400	7000	1600 (30%)
10.	PHC Garsa, Kullu	2016-17	1.	ARV solution	50	60	10
			2.	Tab Ofloxacin 200 mg	3000	5000	2000
			3.	Inj. Diazepam	10	50	40
			4.	Inj. Phenotoin Sodium	10	50	40
			5.	Tab Citrizine	5000	20000	15000
		2017-18	6.	Inj. Ceftriaxzone	100	400	300
			7.	Inj. Xylocaine 2%	10	29	19
			8.	Tab Amlodipine 5 mg	5000	8000	3000
			9.	Tab Domperidone	5000	7000	2000
		18180	40589	22409 (123%)			
11.	SDH Kangra	2016-17	1.	Tab Vitamin B complex	30000	80000	50000 (167%)
12.	SDH Nurpur, Kangra	2016-17	1.	Inj. Sodium Diclofenac	10000	24000	14000 (140%)
13.	CH Fatehpur, Kangra	2016-17	1.	Ciprofloxacin eye drops	1800	4200	2400 (133%)
14.	PHC Mahakal, Kangra	2016-17	1.	Tab Diclofenac Sodium	178000	290000	112000
			2.	Inj. Ceftriaxone 250 mg	125	500	375
			3.	Tab Paracetamol 500 mg	227000	405500	178500
					405125	696000	290875 (72%)
15.	PHC Tiara, Kangra	2017-18	1.	ORS (WHO formula)	15000	18960	3960 (26%)
Grand Total					810175	1333034	522859 (65%)

Details regarding supply of medicines without demand during 2016-17

Sl. No.	Name of Health Institution	Year	Sl. No.	Name of Medicine	Quantity demanded	Quantity received	Difference
1.	SDH Kangra	2016-17	1.	Tab Pantaprozole 40 mg	0	45000	45000
			2.	IV set	0	7400	7400
			3.	Disposable Syringe	0	17000	17000
					0	69400	69400 (100%)
2.	CH Fatehpur, Kangra	2016-17	1.	Tab Amoxiclyline 250 mg	0	20000	20000 (100%)
3.	PHC Tiara, Kangra	2016-17	1.	Inj. Ante Snake Venom	0	20	20 (100%)
4.	CH Manali, Kullu	2016-17	1.	Inj. Ante Snake Venom	0	10	10
			2.	Tab Zinc Sulphate	0	7000	7000
					0	7010	7010 (100%)
Grand Total					0	96430	96430 (100%)

Appendix-3.3

(Refer paragraph; 3.6.3.4; page 84)

Details regarding short/ non-supply of medicines from district stores against the indents by the test-checked field units

Sl. No.	Name of the Institution	Date of indent	Number of medicines indented	Number of medicines not supplied	Percentage of medicines not supplied	Number of medicines short -supplied	Quantity indented	Quantity received	Short supplied	Number of medicines excess supplied	Quantity indented	Quantity received	Excess supplied
1.	BMO Kihar	26.03.18	37	15	41	0	0	0	0	2	4600	15260	10660
2.	PHC Hunera	03.10.17	49	15	31	15	114900	34620	80280	2	20010	21620	1610
		04.07.16	80	44	55	12	52420	9735	42685	2	2030	5075	3045
3.	CHC Kihar	03.08.17	10	8	80	0	0	0	0	0	0	0	0
		22.08.17	13	5	38	0	0	0	0	0	0	0	0
		08.09.17, 22.04.16, 02.02.18	79	15	19	12	74000	49210	24790	3	4500	5440	940
		30.06.17	22	0	0	4	20000	11000	9000	0	0	0	0
4.	CH Dalhausie	05.01.18	218	172	79	3	2200	1082	1118	4	18100	25880	7780
5.	PHC Sundla	23.11.17	55	19	35	7	99000	41600	57400	0	0	0	0
District Chamba			11	563	52	53	362520	147247	215273	13	49240	73275	24035
6.	CHC Gangath	22.11.16	15	2	13	0	0	0	0	0	0	0	0
		24.01.08	6	1	17	0	0	0	0	0	0	0	0
7.	PHC Kherian	09.12.16	21	1	05	0	0	0	0	0	0	0	0
8.	PHC Jassur	17.06.16	14	2	14	0	0	0	0	0	0	0	0
9.	CH Jawali	10.02.16	19	2	11	1	20	15	5	0	0	0	0
District Kangra			5	75	8	11	20	15	5	0	0	0	0
10.	CHC Jari	26/29.09.17	14	6	43	0	0	0	0	0	0	0	0
11.	RH Kullu	02.06.18, 07.03.18, 26.10.17, 06.09.17, 17.10.17, 23.02.18	14	10	71	0	0	0	0	0	0	0	0
District Kullu			8	28	57	0	0	0	0	0	0	0	0
12.	CHC Kotli	02.02.16	28	0	0	0	0	0	0	1	7000	8000	1000
		08.11.16	31	0	0	4	57500	9600	47900	0	0	0	0
		05.01.17	29	0	0	2	20080	10025	10055	1	11200	22400	11200
13.	PHC Nanawan	12.09.16	84	6	7	1	100	50	50	5	3100	7420	4320
14.	PHC Gokhra	14.12.16	19	15	79	0	0	0	0	0	0	0	0
15.	HSC Kalaud	15.06.17	28	3	11	0	0	0	0	0	0	0	0
16.	BMO Rohanda	01.07.16	14	3	21	1	20000	16000	4000	1	3000	3200	200
17.	HSC Upper Behli	25.05.16, 23.03.18	11	2	18	0	0	0	0	0	0	0	0
District Mandi			9	244	12	8	97680	35675	62005	8	24300	41020	16720
Grand Total			33	910	38	62	460220	182937	277283	21	73540	114295	40755

Appendix-3.4

(Refer paragraph: 3.6.3.15; page 92)

Details regarding idle machinery and equipment in four test-checked districts

Details regarding idle machinery and equipment due to lack of manpower

District	Name of METP	Name of Health Institutions	Amount (₹ in lakh)	Date since idle
Chamba	USG	CH Bharmour	4.07	April 2016
	USG	CH Chowari	6.41	April 2016
	USG	CH Killar	--	April 2016
Mandi	USG	CH Sunder Nagar	24.65	November 2015
	USG	CH Joginder Nagar	5.13	March 2017
	USG	CH Karsog	24.48	March 2016
Kangra	USG	CH Fatehpur	5.29	January 2017
	USG	CH Jai Singhpur	2.36	June 2015
	USG	CH Kangra	5.96	September 2017
	09		78.35	
Chamba	X-Ray	PHC Diur	2.00	January 2014
Mandi	X-Ray	CHC Nihri	8.10	July 2017
	X-Ray	CH Sandhol	8.10	November 2015
	X-Ray	CHC Kotli	1.47	November 2015
	X-ray	CHC Rohanda	4.12	Since six years
Kangra	X-Ray	PHC Tiara	--	March 2013
	X-Ray	PHC Lapiana	--	September 2014
	X-ray	CHC Indora	--	2009
	X-Ray	CHC Rehan	--	2013
	X-Ray	CHC Dadasiba	3.24	October 2014
	X-Ray	CHC Bir	--	2015
Kullu	X-Ray	CH Nirmand	--	October 2014
	12		27.03	
Kangra	Hi care Incubator	CH Jaisinghpur	140.55	September 2014
	Water bath HWB-20	-do-	14.09	September 2014
	Phototherapy	CH Thural	0.53	June 2016
	03		155.17	
Total	24		260.55	

Details regarding idle machinery and equipment due to being out of order

Name of institution	Sl. No.	Name of machinery/ quantity	Date since machinery is out of order	Period since lying idle	Amount (Amount in ₹)	Remarks
ZH Dharamshala, Kangra	1.	Electrolyte Analyzer	September 2016	20 months	84,000	--
	2.	CT Scan	2014	04 years	Not available	Services of CT scan had been outsourced. AMC not renewed.
CHC Bhawarna, Kangra	3.	Dental Chair	January 2017	16 months	1,36,000	--
CH Fatehpur, Kangra	4.	ECG Machine	Since last two years	02 years	41,731	--
	5.	X ray film processor	Since last two years	02 years	2,07,007	--
PHC Mahakal, Kangra	6.	Autoclave	25 December 2016	17 months	22,500	--
ZH Mandi	7.	Dental chair with accessories	Since last three years	03 years	1,50,536	--
	8.	Minor OT table	9 March 2018	04 months	2,60,049	--
	9.	Horizontal Sterliser	24 March 2018	14 months	3,59,100	--
CH Sandhol, Mandi	10.	Automated Haematology Analyser	April 2017	13 months	2,64,831	Defective supply not replaced.
RH Chamba	11.	CT Scan	26 December 2015	29 months	97,00,000	Services of CT Scan had been outsourced.
Total					1,12,25,754	

Details regarding unutilised machinery and equipment due to non-requirement

Sl. No.	Name of equipment	Quantity	Name of Health Institutions	Date of receiving/ purchasing	Amount (₹ in lakh)
1.	X-Ray Unit	1	CH Kihar, Chamba	20 August 2015	8.71
2.	Mobile X-Ray Unit	1	Zonal Hospital, Mandi (Ortho Ward)	May 2015	2.41
3.	X-Ray Unit (Dental)	1	Dental Section, RH Chamba	17 January 2017	0.32
4.	Nuvo Lite Oxygen Concentrator	5	TB, Hospital, Chamba	22 February 2015	3.90
5.	Labour Table	1	PHC, Samote, Chamba	19 September 2017	0.29
6.	Dressing Trolley	28	CMO, Kullu	9 August 2017	2.80
7.	Stretcher Trolley	16	CMO, Kullu	9 August 2017	0.58
Total		53			19.01

Appendix-3.5

(Refer paragraph: 3.15; page 108)

Details of short realisation of dues from telecom companies for laying of optical fibre cable

(₹ in lakh)

Sl. No.	Telecom company	Name of road	Funds due from company as per prescribed rates	Estimates sent to company		Funds actually received		Short receipt
				Month	Amount	Month	Amount	
Sundernagar Division								
1.	Reliance Jio Infocomm Limited	Saronitali link road to Haripur near Mahamaya temple: 16 km (Katcha road : 4.5 km and MTRs: 11.5 km)	144.09 (4500x695=3127500 and 11500x981=11281500)	February 2015	120.97 (4500x 392.95=1768275 and 11500x 898.16= 10328840)	March 2015	120.97	23.12
2.	Reliance Jio Infocomm Limited	Hamsafar Chowk to Mahamaya temple via Bari road: 8 km (Rural Road)	72.40 (8000x905)	April 2015	71.85 (8000x 898.16)	May 2015	71.85	0.55
3.	Reliance Jio Infocomm Limited	NH-21: 0.800 km	10.58 (800x1323)	September 2015	6.62 (800x827.87)	September 2015	6.62	3.96
4.	Reliance Jio Infocomm Limited	NH-21: 0.300 km	3.97 (300x1323)	October 2015	3.18 (300x1059.48)	October 2015	3.18	0.79
5.	Idea cellular Limited	NH-21: 2.600 km	34.40 (2600x1323)	October 2015	30.93 (2600x1189.50)	November 2015	30.93	3.47
6.	Idea Cellular Limited	NH-21 and Sundernagar circular road: 1.070 km	14.16 (1070x1323)	October 2015	12.73 (1070x1189.50)	November 2015	12.73	1.43
Total			279.60		246.28		246.28	33.32
Bilaspur Division No. I								
1.	Bharti Airtel Limited	Barmana to Kandraur and Kandraur to Dehar: 14 km (MTRs)	137.34 (14000x 981)	November 2014	70.73 (14000x505.23)	November 2014	70.73	66.61
Total			137.34		70.73		70.73	66.61
Mandi Division No. II								
1.	Idea Cellular Limited	Nerchowk to Sidhyani : 10 km (Rural Road)	90.50 (10000x905)	October 2015	81.24 (2000x 1059.48=2118960 and 8000x750.60=6004800)	November 2015	81.24	9.26
2.	Idea Cellular Limited	Rewalsar to Kalkhar and Kalkhar to Sidhayani: 8.830 km (NH/SH/ MDRs)	116.82 (8830x1323)	October 2015	71.73 (1766x1059.48 =1871042 and 7064x750.60= 5302238)	November 2015	71.73	45.09
3.	Idea Cellular Limited	Durgapur to Rewalsar road: 8.200 km (Rural Road)	74.21 (8200x905)	October 2015	66.61 (1640x1059.48 =1737547 and 6560x750.60= 4923936)	November 2015	66.61	7.60
4.	Reliance JioInfocomm Limited	Chakkar challah road: 2.5 km (Rural Road)	22.63 (2500x905)	November 2015	18.77 (2500x750.60 = 187650)	December 2015	18.77	3.86
Total			304.16		238.35		238.35	65.81
Grand Total			721.10		555.36		555.36	165.74

Appendix-3.6

(Refer paragraph: 3.18; page 114)

Details regarding amount of recovery due from 12 HPP developers

Sl. No.	Name of HPP	Capacity	Date of commission	Project cost (₹ in crore)	LADF contribution (₹ in crore)			Interest on short deposited LADF amount (₹ in crore)	Total recoverable amount (₹ in crore)
					Due	Deposited	Short deposited		
District Shimla (Six HPPs)									
1.	Sumej	14 MW	19.09.12	92.03	1.36	1.05	0.31	0.52	0.83
2.	Jogini	16 MW	28.03.14	88.13	1.30	0.30	1.00	0.52	1.52
3.	Nanti	14 MW	13.05.14	88.36	1.31	0.40	0.91	0.46	1.37
4.	Ghanvi-II	10 MW	30.04.14	99.08	1.50	1.37	0.13	0.11	0.24
5.	Kurmi	8 MW	25.03.14	68.49	1.01	0.30	0.71	0.37	1.08
6.	Upper Nanti	12 MW	26.10.17	114.50	1.69	0.25	1.44	0.10	1.54
District Kangra (Five HPPs)									
7.	Manjhi-II	5 MW	06.11.10	27.68	0.28	0	0.28	0.25	0.53
8.	Binwa Prai	5 MW	09.05.11	28.32	0.28	0.18	0.10	0.08	0.18
9.	Awa	4.50 MW	01.05.14	28.73	0.29	0.03	0.26	0.13	0.39
10.	Upper Awa	5 MW	23.05.08	29.13	0.29	0.25	0.04	0.06	0.10
11.	Neogal-II	4.50 MW	01.08.14	28.53	0.28	0.09	0.19	0.09	0.28
District Kullu (One HPP)									
12.	Balargha	9 MW	22.01.18	77.68	1.17	0.40	0.77	0.03	0.80
	Total				10.76	4.62	6.14	2.72	8.86

Source: Departmental figures.

Appendix-3.7

(Refer paragraph: 3.19; page 115)

Statement showing avoidable payment of interest paid to land owners

(Amount in ₹)

Sl. No.	Name of land owner S/Sh.	Area acquired (In Bigha)	Total amount due as on 27 March 2006	15 per cent interest payable from 29 March 2006 to 10 November 2008 (957 days)	Total	Amount deposited with High Court on 28 March 2006	Amount less deposited	Total amount paid on 3.11.2016	Avoidable interest payment
1	2	3	4	5	6 = (4 + 5)	7	8 = (6 - 7)	9	10
1.	Dawa Gaylong	00.05.00	3,24,684	40,727	3,65,411	2,21,130	1,44,281	2,69,652	1,25,371
2.	Prithvi Singh/ Ravinder Singh	09.16.00	1,27,27,587	15,96,469	1,43,24,056	86,68,296	56,55,760	1,05,70,283	49,14,523
3.	Tamding Angmo	01.12.00	20,77,974	2,60,648	23,38,622	14,15,232	9,23,390	17,25,762	8,02,372
4.	Kunti Bodh	21.02.06	2,76,82,504	34,72,321	3,11,54,825	1,88,53,544	1,23,01,281	2,29,90,370	1,06,89,089
5.	Prem Singh/ Veer Singh	01.11.00	20,13,037	2,52,503	22,65,540	13,71,006	8,94,534	16,71,831	7,77,297
6.	Babu Ram	00.05.00	3,24,684	40,727	3,65,411	2,21,130	1,44,281	2,69,652	1,25,371
7.	Suman Kumari	00.05.00	3,24,684	40,727	3,65,411	2,21,130	1,44,281	2,69,652	1,25,371
	Total		4,54,75,154	57,04,122	5,11,79,276	3,09,71,468	2,02,07,808	3,77,67,202	1,75,59,394