

ANNEXURES

Annexure – 1.1

(Referred to in Paragraphs 1.1 and 1.15)

Summarised financial position and working results of Government companies and Statutory corporations as per their latest finalized statements/accounts

(Figures in columns 5 to 12 are ₹ in crore)

Sl. No.	Sector/Name of the Company	Period of accounts	Year in which accounts finalised	Paid-up Capital	Loans outstanding at the end of year (as on 31.3.2015)	Accumulated Profit(+)/ Loss(-)	Turnover	Net profit(+)/Loss(-)	Net Impact of Audit Comments [#]	Capital employed [@]	Return on capital employed ^{\$}	Percentage of return on capital employed	Manpower (as on 31.03.2015)
(1)	(2)	(3)	(4)	(5)	(6)	(7)	(8)	(9)	(10)	(11)	(12)	(13)	(14)
	A.WORKING GOVERNMENT COMPANIES												
	AGRICULTURE & ALLIED												
1.	Bihar Rajya Beej Nigam Limited	1999-00	2013-14	3.71	27.93	(-)58.45	1.89	(-)4.99	-	0.82	(-)2.25	-	71
2.	Bihar Rajya Matasya Vikas Nigam Limited	1992-93	1996-97	1.75	2.63	(-)1.92	-	(-)0.22	-	1.74	(-)0.05	-	21
3.	SCADA Agro Business Company Limited	2011-12	2015-16	0.05	-	(-)1.78	-	0.03	-	1.14	0.03	2.63	NA
	Sector wise total			5.51	30.56	(-)62.15	1.89	(-)5.18	-	3.70	(-)2.27	-	92
	FINANCE												
4.	Bihar State Credit & Investment Corporation Limited	2006-07 2007-08 2008-09	2015-16	15.12	53.48	(-)155.24	3.06	(-)1.45	-	31.29	1.72	5.50	39
5.	Bihar State Backward Classes Finance & Development Corporation	1997-98	2006-07	3.62	16.00	0.53	0.64	(-)0.29	-	3.86	0.39	10.10	18
6.	Bihar State Minorities Finance Corporation Limited	2010-11	2015-16	28.29	27.55	(-)8.49	3.24	(-)0.01	-	43.69	0.86	1.97	30
7.	Bihar State Film Development & Finance Corporation Limited	1995-96	2014-15	1.00	0.15	(-)0.13	-	0.01	-	1.01	0.03	2.97	07
	Sector wise total			48.03	97.18	(-)163.33	6.94	(-)1.74	-	79.85	3.00	3.76	94
	INFRASTRUCTURE												
8.	Bihar Police Building Construction Corporation Limited	2008-09	2014-15	0.10	0.43	(-)10.84	1.05	3.06	-	(-)10.31	3.06	-	350

Audit Report on Public Sector Undertakings for the year ended 31 March 2015

Sl. No.	Sector/Name of the Company	Period of accounts	Year in which accounts finalised	Paid-up Capital	Loans outstanding at the end of year (as on 31.3.2015)	Accumulated Profit(+)/ Loss(-)	Turnover	Net profit(+)/Loss(-)	Net Impact of Audit Comments [#]	Capital employed [@]	Return on capital employed ^{\$}	Percentage of return on capital employed	Manpower (as on 31.03.2015)
(1)	(2)	(3)	(4)	(5)	(6)	(7)	(8)	(9)	(10)	(11)	(12)	(13)	(14)
9.	Bihar Rajya Pul Nirman Nigam Limited	2011-12 2012-13	2014-15	3.50	-	182.17	117.37	106.99	0.05	316.84	106.99	33.77	272
10.	Bihar State Building Construction Corporation Limited	2012-13 2013-14	2014-15	5.00	-	8.69	28.76	14.59	0.25	13.90	26.96	193.96	140
11.	Bihar State Road Development Corporation Limited	2013-14	2015-16	20.00	193.00	225.63	749.07	58.57	(-)690.97	370.63	58.57	15.80	109
12.	Bihar Urban Infrastructure Development Corporation Limited	2013-14	2014-15	5.00	-	14.28	220.93	10.94	-	24.86	10.94	44.01	81
13.	Bihar State Educational Infrastructure Development Corporation Limited	2013-14 2014-15	2014-15 2015-16	20.00	-	111.26	83.34	72.63	**	131.26	72.63	55.33	230
Sector wise total				53.60	193.43	531.19	1200.52	266.78	(-)690.67	847.18	279.15	32.95	1182
MANUFACTURING													
14.	Bihar State Electronics Development Corporation Limited	2011-12 2012-13 2013-14	2014-15 2014-15	5.66	6.00	35.04	57.57	8.14	-	70.41	9.06	12.87	69
15.	Bihar State Mineral Development Corporation Limited	2000-01	2004-05	9.97	-	7.04	31.55	9.29	-	20.68	9.29	44.92	01
16.	Bihar State Beverages Corporation Limited	2013-14	2015-16	5.00	-	39.57	3155.31	132.87	3.58	50.17	132.87	264.84	240
Sector wise total				20.63	6.00	81.65	3244.43	150.30	3.58	141.26	151.22	107.05	310
POWER													
17.	Bihar State Hydroelectric Power Corporation Limited	2000-01	2013-14	99.04	466.43	(-)28.18	9.12	(-)1.42	(-) 11.01	279.75	4.49	1.61	171
18.	Bihar State Power (Holding) Company Limited	2013-14	2015-16	8923.96	91.32	-	-	-	-	9504.03	-	-	335
19.	Bihar State Power Generation Company Limited	2013-14	2014-15	2005.42	2133.87	-	-	-	-	4414.22	-	-	441
20.	Bihar State Power Transmission Company Limited	2013-14	2014-15	2307.08	289.30	(-)24.19	223.21	(-)24.19	(-) 23.15	4115.92	(-)9.99	-	1641
21.	North Bihar Power	2012-13											

Sl. No.	Sector/Name of the Company	Period of accounts	Year in which accounts finalised	Paid-up Capital	Loans outstanding at the end of year (as on 31.3.2015)	Accumulated Profit(+)/ Loss(-)	Turnover	Net profit(+)/Loss(-)	Net Impact of Audit Comments [#]	Capital employed [@]	Return on capital employed ^{\$}	Percentage of return on capital employed	Manpower (as on 31.03.2015)
(1)	(2)	(3)	(4)	(5)	(6)	(7)	(8)	(9)	(10)	(11)	(12)	(13)	(14)
	Distribution Company Limited	2013-14	2014-15	2170.84	1548.48	(-)714.34	2581.26	(-)74.26	635.96	5854.03	(-)29.62	0.51	3706
22.	South Bihar Power Distribution Company Limited	2013-14	2014-15	2268.85	2097.11	(-)1410.37	4038.28	(-)268.69	1656.42	5194.74	(-)248.63	-	5665
23.	Bihar Grid Company Limited	2014-15	2015-16	20.05	38.50	-	-	-	(-)0.74	58.55	-	-	21
24.	Pirpainti Bijli Company Private Limited	A/c not finalised	-	-	-	-	-	-	-	-	-	-	NA
25.	Lakhisarai Bijli Company Private Limited	A/c not finalised	-	-	-	-	-	-	-	-	-	-	NA
Sector wise total		-	-	17795.24	6665.01	(-)2177.08	6851.87	(-)368.56	2257.48	29421.24	(-)283.75	-	11980
SERVICES													
26.	Bihar State Tourism Development Corporation Limited	2011-12	2015-16	5.00	-	9.38	9.79	2.16	-	75.64	2.16	2.86	261
27.	Bihar State Food & Civil Supplies Corporation Limited	1990-91	2012-13	4.46	3924.83	(-)46.04	140.14	(-)11.18	(-) 3.37	39.12	(-) 3.02	-	661
28.	Bihar Medical Services & Infrastructure Corporation Limited	2012-13	2013-14	6.74	-	2.31	0.36	2.49	-	9.05	2.49	27.51	37
Sector Wise Total				16.20	3924.83	(-)34.35	150.29	(-)6.53	(-)3.37	123.81	1.63	1.32	959
Miscellaneous													
29.	Bihar State Forest Development Corporation Limited	2000-01	2005-06	2.29	-	0.32	22.81	0.28	(-)0.40	1.17	0.28	23.93	108
30.	Bihar State Text Book Publishing Corporation Limited	1999-00 2000-01	2014-15 2014-15	0.48	-	1.64	12.59	4.15	-	2.12	4.15	195.75	77
Sector wise total		-	-	2.77	-	1.96	35.40	4.43	(-)0.40	3.29	4.43	-	185
Total A (All sector wise working Government companies)		-	-	17941.98	10917.01	(-)1818.55	11491.34	39.50	1566.62	30620.33	153.41	0.50	14802
B. WORKING STATUTORY CORPORATION													
FINANCE													
1.	Bihar State Financial Corporation	2014-15	2015-16	77.84	228.47	(-)421.65	5.03	(-)17.66	***	54.76	(-)0.59	-	180

Audit Report on Public Sector Undertakings for the year ended 31 March 2015

Sl. No.	Sector/Name of the Company	Period of accounts	Year in which accounts finalised	Paid-up Capital	Loans outstanding at the end of year (as on 31.3.2015)	Accumulated Profit(+)/ Loss(-)	Turnover	Net profit(+)/Loss(-)	Net Impact of Audit Comments [#]	Capital employed [@]	Return on capital employed ^{\$}	Percentage of return on capital employed	Manpower (as on 31.03.2015)
(1)	(2)	(3)	(4)	(5)	(6)	(7)	(8)	(9)	(10)	(11)	(12)	(13)	(14)
	Sector wise total			77.84	228.47	(-)421.65	5.03	(-)17.66		54.76	(-)0.59	-	180
	SERVICES												
2.	Bihar State Road Transport Corporation	2005-06	2015-16	101.28	547.79	(-)902.98	56.33	(-)59.23	-	(-)713.22	(-)22.09	-	750
3.	Bihar State Warehousing Corporation	2010-11	2014-15	6.42	-	5.42	66.94	0.81	(-)8.47	19.26	0.99	5.14	158
	Sector wise total			107.70	547.79	(-)897.56	123.27	(-)58.42	(-)8.47	(-)693.96	(-)21.10	-	908
	Total B (All sector wise working Statutory corporations)			185.54	776.26	(-)1319.21	128.30	(-)76.08	(-)8.47	(-)639.20	(-)21.69	-	1088
	Grand Total (A + B)			18127.52	11693.27	(-)3137.76	11619.64	(-)36.58	1558.15	30017.13	131.72	0.44	15890
	C. NON-WORKING GOVERNMENT COMPANIES												
	AGRICULTURE & ALLIED												
1.	Bihar State Water Development Corporation Limited	1978-79	1997-98	5.00	49.68	11.20	-	2.17	-	26.70	2.42	9.06	NA
2.	Bihar State Dairy Corporation Limited	1997-98	2014-15	6.72	-	(-)10.57	-	(-)0.00 ¹	-	4.86	0.00 ²	-	-
3.	Bihar Hill Area Lift Irrigation Corporation Limited	1982-83	1983-84	5.60	8.55	(-)0.86	0.01	(-)0.26	-	9.53	(-) 0.13	-	NA
4.	Bihar State Agro Industries Development Corporation Limited	1990-91 1991-92	2013-14	7.57	12.60	(-)34.73	3.70	(-)2.22	-	(-)6.64	(-)1.65	-	136
5.	Bihar State Fruit & Vegetables Development Corporation Limited	1994-95	2010-11	2.10	1.12	(-)7.82	-	(-)0.92	(-)0.14	(-) 0.07	(-)0.19	-	09
6.	Bihar Insecticide Limited	1986-87	1991-92	0.57	1.54	(-)1.03	-	(-)1.03	-	2.35	(-)0.87	-	53
7.	SCADA Agro Business Limited, Khagaul	-	-	-	NA	-	-	-	-	-	-	-	NA
8.	SCADA Agro Business Limited, Dehri.	-	-	-	NA	-	-	-	-	-	-	-	NA
9.	SCADA Agro Business	-	-	-	NA	-	-	-	-	-	-	-	NA

¹ ₹ 45,560

² ₹ 45,560

Sl. No.	Sector/Name of the Company	Period of accounts	Year in which accounts finalised	Paid-up Capital	Loans outstanding at the end of year (as on 31.3.2015)	Accumulated Profit(+)/ Loss(-)	Turnover	Net profit(+)/Loss(-)	Net Impact of Audit Comments [#]	Capital employed [@]	Return on capital employed ^{\$}	Percentage of return on capital employed	Manpower (as on 31.03.2015)
(1)	(2)	(3)	(4)	(5)	(6)	(7)	(8)	(9)	(10)	(11)	(12)	(13)	(14)
	Limited, Arrah												
10.	SCADA Agro Business Limited, Aurangabad	-	-	-	NA	-	-	-	-	-	-	-	NA
11.	SCADA Agro Business Limited, Mohania	-	-	-	NA	-	-	-	-	-	-	-	NA
12.	SCADA Agro Forestry Company Limited, Khagaul	-	-	-	NA	-	-	-	-	-	-	-	NA
	Sector wise total	-	-	27.56	73.49	(-)43.81	3.71	(-)2.26	(-) 0.14	36.73	(-)0.42	-	198
	FINANCE												
13.	Bihar Panchayati Raj Finance Corporation Limited	1984-85	1991-92	1.44	-	(-)0.03	-	(-)0.01	-	5.86	0.23	3.92	54
14.	Bihar State Handloom and Handicrafts Corporation Limited	1983-84	1996-97	6.28	1.16	(-)0.44	-	(-)0.10	(-)0.01	7.08	0.01	0.14	NA
15.	Bihar State Small Industries Corporation Limited	1990-91	2005-06	7.18	21.23	(-)16.56	15.22	(-)1.42	(-)0.53	1.86	(-)0.27	-	49
16.	Bihar State Industrial Development Corporation Limited	1988-89 to 2003-04 2004-05	2015-16	14.04	66.56	(-)133.78	-	(-)13.56	-	127.62	(-)4.22	-	768
	Sector wise total			28.94	88.95	(-)150.81	15.22	(-)15.09	(-) 0.54	142.42	(-)4.25		871
	INFRASTRUCTURE												
17.	Bihar State Construction Corporation Limited	1995-96 1996-97 1997-98 1998-99	2015-16	7.00	2.03	(-)23.60	10.35	(-)2.41	-	(-)15.09	(-)2.41	-	146
	Sector wise total			7.00	2.03	(-)23.60	10.35	(-)2.41	-	(-)15.09	(-)2.41	-	146
	MANUFACTURING												
18.	Bihar Solvent & Chemicals Limited	1986-87	1995-96	0.66	0.89	(-)0.32	-	(-)0.32	(-) 0.24	1.67	(-)0.21	-	NA
19.	Magadh Mineral Limited	-	-	-	0.47	-	-	-	-	-	-	-	05
20.	Kumardhubi Metal Casting & Engineering Limited	1994-95	1995-96	2.17	6.63	(-)8.16	10.89	(-)2.39	-	0.91	(-)2.01	-	NA
21.	Beltron Video System Limited	1987-88	1998-99	1.21	4.51	(-)0.22	0.75	(-)0.15	-	1.02	(-)0.10	-	NA
22.	Beltron Mining System	1989-90	2002-03	1.26	-	(-)0.49	0.41	(-)0.10	-	0.52	(-)0.10	-	NA

Audit Report on Public Sector Undertakings for the year ended 31 March 2015

Sl. No.	Sector/Name of the Company	Period of accounts	Year in which accounts finalised	Paid-up Capital	Loans outstanding at the end of year (as on 31.3.2015)	Accumulated Profit(+)/ Loss(-)	Turnover	Net profit(+)/Loss(-)	Net Impact of Audit Comments [#]	Capital employed [@]	Return on capital employed ^{\$}	Percentage of return on capital employed	Manpower (as on 31.03.2015)
(1)	(2)	(3)	(4)	(5)	(6)	(7)	(8)	(9)	(10)	(11)	(12)	(13)	(14)
	Limited												
23.	Beltron Informatics Limited	-	-	-	-	-	-	-	-	-	-	-	NA
24.	Bihar State Sugar Corporation Limited	1984-85	1996-97	9.97	322.95	(-72.31)	-	(-9.20)	(-4.67)	(-10.24)	(-3.20)	-	NA
25.	Bihar State Cement Corporation Limited	-	-	-	0.03	-	-	-	-	-	-	-	NA
26.	Bihar State Pharmaceuticals & Chemicals Development Corporation Limited	1985-86	1992-93	3.62	4.25	(-0.74)	-	(-0.17)	-	6.87	(-0.17)	-	52
27.	Bihar Maize Product Limited	1983-84	1987-88	0.67	0.02	(-0.06)	-	(-0.03)	-	0.80	(-0.03)	-	NA
28.	Bihar Drugs and Chemicals Limited	1985-86	1991-92	0.94	1.28	(-0.16)	-	(-0.03)	-	1.16	(-0.03)	-	NA
29.	Bihar State Textiles Corporation Limited	1987-88	1995-96	4.98	2.27	(-0.32)	-	(-0.09)	(-0.02)	3.72	(-0.09)	-	51
	Sector wise total			25.48	343.30	(-82.78)	12.05	(-12.48)	(-4.93)	6.43	(-5.94)		108
	SERVICES												
30.	Bihar State Export Corporation Limited	1991-92	1999-00	2.00	1.22	(-0.01)	4.94	(-0.10)	(-0.03)	3.75	0.10	2.69	23
	Sector wise total			2.00	1.22	(-0.01)	4.94	(-0.10)	(-0.03)	3.75	0.10		23
	MISCELLANEOUS												
31.	Bihar Paper Mills Limited	1985-86	1997-98	1.56	10.72	(-0.31)	-	(-0.06)	0.00 ³	1.44	(-0.06)	-	NA
32.	Bihar State Glazed Tiles & Ceramics Limited	1985-86	1997-98	0.16	3.66	(-0.51)	-	(-0.08)	-	3.50	0.06	-	32
33.	Vishwamitra Paper Industries Limited	1984-85	1988-89	0.40	0.81	(-0.01)	-	(-0.01)	-	0.69	(-0.01)	-	NA
34.	Jhanjharpur Paper Industries Limited	1985-86	1991-92	0.42	0.46	(-0.02)	-	(-0.01)	(-0.03)	0.59	(-0.01)	-	13
35.	Bihar State Tannin Extract Limited	1988-89	1993-94	1.03	2.14	(-0.67)	-	(-0.32)	-	2.49	(-0.16)	-	NA
36.	Bihar State Finished Leathers Corporation Limited	1983-84	1986-87	1.47	9.18	(-2.13)	-	(-1.49)	-	6.15	(-1.49)	-	NA
37.	Synthetic Resins (Eastern) Limited	1983-84	1987-88	0.09	1.05	(-0.01)	-	(-0.02)	-	0.17	(-0.02)	-	-

³ ₹ 36,000

Sl. No.	Sector/Name of the Company	Period of accounts	Year in which accounts finalised	Paid-up Capital	Loans outstanding at the end of year (as on 31.3.2015)	Accumulated Profit(+)/ Loss(-)	Turnover	Net profit(+)/Loss(-)	Net Impact of Audit Comments [#]	Capital employed [@]	Return on capital employed ^{\$}	Percentage of return on capital employed	Manpower (as on 31.03.2015)
(1)	(2)	(3)	(4)	(5)	(6)	(7)	(8)	(9)	(10)	(11)	(12)	(13)	(14)
38.	Bhavani Active Carbon Limited	1985-86	1989-90	0.02	-	(-)0.01	-	(-)0.01	-	0.01	(-)0.01	-	NA
39.	Bihar State Leather Industries Development Corporation Limited	1982-83	2004-05	5.14	14.13	(-)2.92	-	(-)0.37	(-)0.01	2.56	(-)0.29	-	NA
40.	Bihar Scooters Limited	-	-	-	6.09	-	-	-	-	-	-	-	NA
	Sector wise total			10.29	48.24	(-)6.59	-	(-)2.37	(-)0.04	17.60	(-)1.99		45
	Total C (All sector wise non working Government companies)			101.27	548.23	(-)307.60	46.27	(-)34.71	(-)5.68	191.84	(-)14.91		1391
	Grand Total (A + B + C)			18228.79	12241.50	(-)3445.36	11665.91	(-)71.29	1552.47	30208.97	116.81	0.39	17281

Above includes other companies referred to in Section 139 (5) and 139(7) of the companies Act 2013 at Sl. No. 3 of working companies and Sl. No. 7 to 12 of non-working companies.

[#] Impact of accounts comments include the net impact of comments of CAG and is denoted by (+) increase in profit/ decrease in losses (-) decrease in profit/ increase in losses.

[@] Capital employed represents net fixed assets (including capital works-in-progress) plus working capital except in case of finance companies/ corporations where the capital employed is worked out as a mean of aggregate of the opening and closing balances of paid up capital, free reserves, bonds, deposits and borrowings (including refinance).Consequent upon amendment in Schedule IV of the Companies Act, 1956, Capital Employed has been computed as Shareholders fund (i.e. Share capital, Share application money pending allotment and Free reserve after adjusting accumulated loss if any) plus Long term Borrowings.

^{\$} Return on capital employed has been worked out by adding profit and interest charged to profit and loss account.

** Audit of Accounts of these PSUs is under progress.

*** Audit of Accounts by CAG who is the sole auditor for these corporations is under progress.

Annexure – 1.2

(Referred to in Paragraph 1.11)

Statement showing investments made by the State Government in PSUs whose accounts were in arrears.

(Amount: ₹ in crore)

Sl. No.	Name of PSU	Year upto which Accounts finalised	Paid up capital	Investment made by the State Government during the years for which Accounts are in arrears				
				Equity	Loans	Grants	Others to be specified (subsidy)	Total
A. Working Government Companies								
1.	Bihar Rajya Beej Nigam Limited	1999-00	3.71	-	2.28	59.69	-	61.97
2.	Bihar Rajya Matasya Vikash Nigam Limited	1992-93	1.75	1.25	5.63	0.26	-	7.14
3.	Bihar State Credit & Investment Corporation Limited	2008-09	15.12	-	53.48	-	-	53.48
4.	Bihar State Backward Classes Finance & Development Corporation	1997-98	3.62	17.74	7.49	-	-	25.23
5.	Bihar State Minorities Finance Corporation Limited	2010-11	28.29	2.10	-	90.00	-	92.10
6.	Bihar State Film Development & Finance Corporation Limited	1995-96	1.00	-	0.01	-	0.50	0.51
7.	Bihar State Mineral Development Corporation Limited	2000-01	9.97	-	-	11.00	-	11.00
8.	Bihar State Hydroelectric Power Corporation Limited	2000-2001	99.04	-	157.70	-	-	157.70
9.	Bihar State Power Generation Company Limited	2013-14	2005.42	211.24	-	3.47	-	214.71
10.	Bihar State Power Transmission Company Limited	2013-14	2307.08	721.94	-	70.00	-	791.94
11.	North Bihar Power Distribution Company Limited	2013-14	2170.84	848.83	14.08	816.09	1087.74	2766.74
12.	South Bihar Power Distribution Company Limited	2013-14	2268.85	661.00	27.58	-	1794.03 [#]	2482.61
13.	Bihar State Tourism Development Corporation Limited	2011-12	5.00	-	-	-	12.00	12.00

14.	Bihar State Food & Civil Supplies Corporation Limited	1990-91	4.46	0.81	1201.23	-	-	1202.04
15.	Bihar Medical Services & Infrastructure Corporation Limited	2012-13	6.74	-	-	363.90	-	363.90
16.	Bihar State Text Book Publishing Corporation Limited	2000-01	0.48	-	-	-	23.00	23.00
	Total (A)		8931.37	2464.91	1469.48	1414.41	2917.27	8266.07
B Working Statutory Corporation								
1.	Bihar State Road Transport Corporation	2005-06	101.28	-	456.77	-	-	456.77
2.	Bihar State Warehousing Corporation	2010-11	6.42	-	-	16.00	31.37	47.37
	Total (B)		107.70	-	456.77	16.00	31.37	504.14
	Total (A+B)		9039.07	2464.91	1926.25	1430.41	2948.64	8770.21

* Figures are based on the information furnished by the PSUs.

The figure includes the amount of subsidy as well as grant.

Annexure-2.1.1

(Referred to in Paragraphs 2.1.1 and 2.1.23)

Statement showing the details of projects allotted to the Company and projects completed by the Company

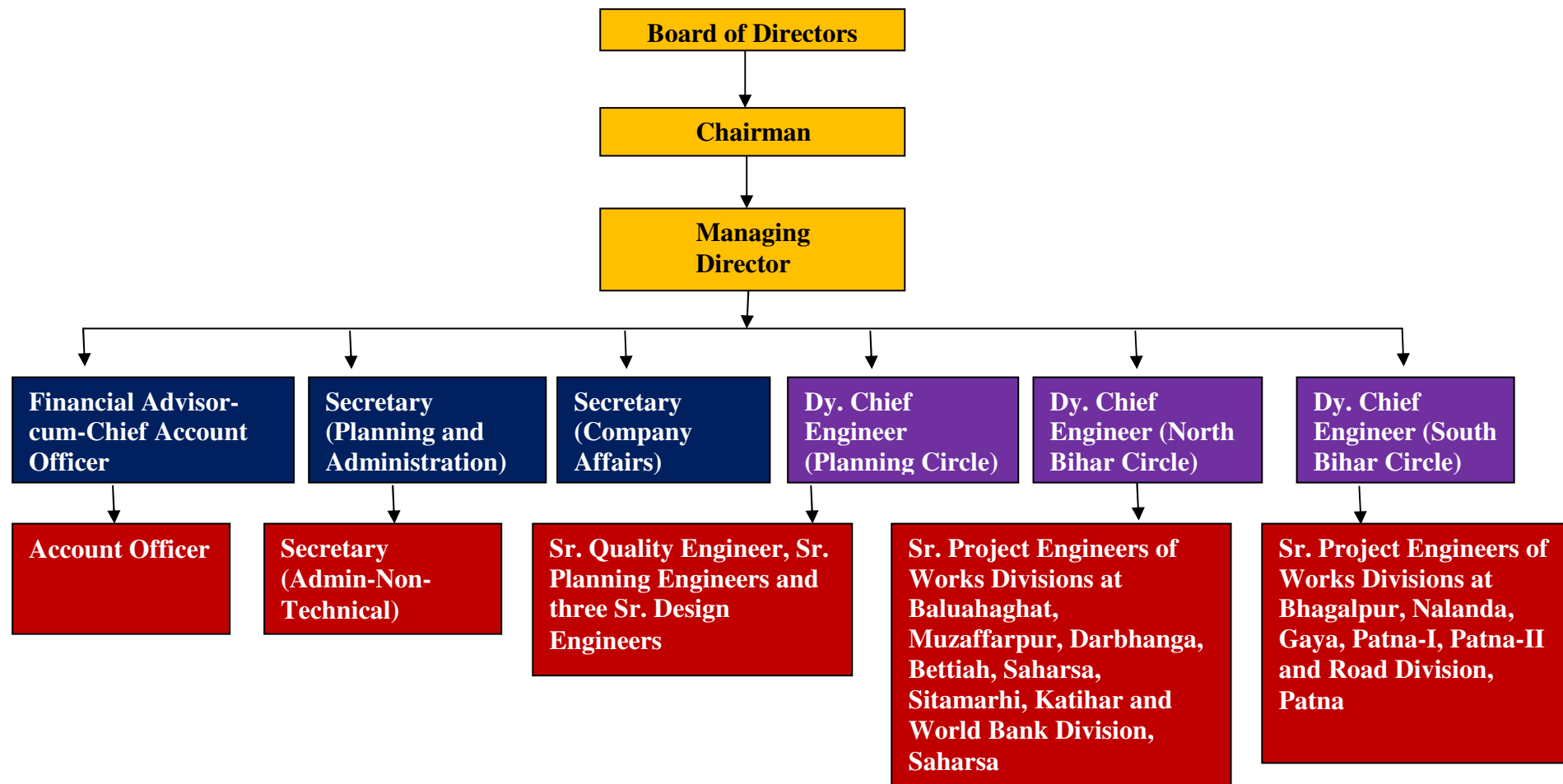
Year		Opening Balance		Addition during the year		Total		Completed		Incomplete	
		No. of Projects	Estimated Cost (₹ in crore)	No. of Projects	Estimated Cost (₹ in crore)	No. of Projects	Estimated Cost (₹ in crore)	No. of Projects	Estimated Cost (₹ in crore)	No. of Projects	Estimated Cost (₹ in crore)
2010-11	Bridges	240	3502.89	303	1378.86	543	4881.76	195	797.70	348	4084.06
	Other Structures	41	714.51	42	47.21	83	761.726	5	9.94	78	751.78
2011-12	Bridges	348	4084.06	171	1174.59	519	5258.64	255	875.54	264	4383.10
	Other Structures	78	751.78	51	66.12	129	817.9	32	30.68	97	787.22
2012-13	Bridges	264	4383.10	263	2366.42	527	6749.52	134	744.10	393	6005.42
	Other Structures	97	787.22	4	11.46	101	798.68	15	61.28	86	737.40
2013-14	Bridges	393	6005.42	148	4401.56	541	10407	98	1193.55	443	9213.43
	Other Structures	86	737.40	146	135.45	232	872.85	24	24.91	208	847.94
2014-15	Bridges	443	9213.43	127	670.73	570	9884.16	139	579.50	431	9304.66
	Other Structures	208	847.94	4	10.50	212	858.44	17	27.09	195	831.35
Total				1259	10262.90			914	4344.29	626	10136.01

Source: Information furnished by the Company

Annexure – 2.1.2

(Referred to in Paragraph 2.1.1)

Organisational Chart



Annexure - 2.1.3

(Referred to in Paragraph 2.1.5)

(A) Financial Position of Bihar Rajya Pul Nirman Nigam Limited for the period from 2010-11 to 2014-15

(₹ in crore)

Particulars	2010-11	2011-12	2012-13	2013-14 (Provisional)	2014-15 (Provisional)
Paid up Capital	3.50	3.50	3.50	3.50	3.50
Reserves & Surplus	166.50	250.14	313.34	385.19	464.86
Non-current liabilities	4945.30	6622.74	8063.44	9809.14	11725.38
Current Liabilities & Provisions	20.27	42.68	32.26	38.27	44.89
Total	5135.57	6919.06	8412.54	10236.10	12238.63
Gross Block	62.48	63.75	64.89	64.80	70.37
Less: Depreciation	17.32	24.02	29.56	34.11	42.41
Net Fixed Assets	45.16	39.73	35.33	30.68	27.96
Capital work in progress	0.03	0.29	0.51	0.52	0.55
Current Assets, Loans & Advances	5090.38	6879.04	8376.70	10204.90	12210.12
Total	5135.57	6919.06	8412.54	10236.10	12238.63

(B) Working results of Bihar Rajya Pul Nirman Nigam Limited for the period from 2010-11 to 2014-15

Working result	2010-11	2011-12	2012-13	2013-14 (Provisional)	2014-15 (Provisional)
Total Income	114.69	175.61	141.94	159.22	183.22
Total expenditure	44.05	49.62	34.95	39.04	44.12
Profit/(loss) before tax and adjustment	70.63	125.99	106.99	120.18	139.09
Centage charge earned	86.91	118.20	117.37	127.86	145.08
Centage as <i>per cent</i> of total income	75.78	67.31	82.69	80.30	79.18
Interest on fixed Deposit	16.88	33.77	15.96	26.39	34.50
Interest on fixed Deposit as <i>per cent</i> of total income	14.71	19.23	11.24	16.57	18.83

Source: Annual Accounts of the Company

Annexure – 2.1.4

(Referred to in paragraph 2.1.14)

Statement showing delays in completion of Approach road in case of completed bridges under various heads.

Sl. No.	Name of Bridge Completed during 2010-15	Name of Division	Date of Completion Bridge Portion	Date of Completion Approach Portion	Delay in Months	Cost of Bridge portion (₹ in Lakh)
1.	Bridge at Jatwaghat	Muzaffarpur	31 January 2012	30 April 2014	15	1154.10
2.	Bridge at Nijay-Gonawan Path on 2.29 KM on Panchane river	Nalanda	16 July 2012	19 February 2013	7	72.00
3.	Bridge at Bhore -Pagara path on 3rd KM	Patna 2	23 March 2013	30 December 2013	9	137.07
4.	Bridge at Bhore -Pagara path on 12th KM	Patna 2	26 June 2013	09 June 2014	11	93.87
5.	Bridge at Khaira Sattarghat path on 32nd KM	Patna 2	26 May 2012	10 June 2013	12	37.63
	Total					1494.67

Source: Information furnished by the Company

Annexure – 2.1.5

(Referred to in paragraph 2.1.14)

Statement showing delays in completion of approach roads in case of ongoing bridges under various heads.

Sl.No.	Name of Bridge Completed 2010-15	Name of Division	Date of Completion Bridge Portion	Date of Completion Approach Portion	Lapse of time till June 2015 (in months)	Cost of Bridge portion (₹ in Lakh)
1.	Bridge at 19th KM of Chakia-Kesharia-sattarghat path	Muzaffarpur	14 August 2013	Not completed	22	121.95
2.	Bridge on Budhi Gandak at Anjankot-Bharkurwaghat	Muzaffarpur	30 September 2014	Not completed	9	1933.19
3.	Bridge at fardo nala on NH-77 on Maripur powerhouse to sakri chauk road	Muzaffarpur	30 May 2014	Not completed	13	197.47
4.	Bridge at Madhopur on the way of Turki chauk to Pakki sarai chauk (NH-77)	Muzaffarpur	12 November 2014	Not completed	7	176.65
5.	Bridge at Mandarghat	Sitamarhi	29 June 2012	Not completed	32	4030.00
6.	Bridge at 8th KM of Garhi Rupawel on Missing link of Jamui Kauakol Road	Bhagalpur	20 August 2012	Not completed	34	464.14
	Total					6923.4

Source: Information furnished by the Company

Annexure – 2.1.6

(Referred to in paragraph 2.1.22)

Statement showing delays in completion of approach roads in case of completed bridges under MMSNY Head

Sl. No.	Name of Bridge Completed during 2010-15	Name of Division	Date of Completion Bridge Portion	Date of Completion Approach Portion	Delay in Months	Cost of Bridge portion (₹ in Lakh)
1.	Bridge on Dakara river	Bhagalpur	01 July 2011	07 March 2012	8	538.77
2.	Bridge at Bhatbaliya-Chathghat	Patna 2	04 June 2011	05 January 12	7	164.21
3.	Bridge at Siwan-guthni Path across Daha river	Patna 2	26 January 2012	28 July 2014	30	153.78
4.	Bridge across Gandki river at Mohamdpur Path	Patna 2	23 July 2011	26 January 2013	6	125.37
5.	Bridge at canal in Manjholiya village	Patna 2	15 December 2013	31 July 2014	7	39.07
6.	Bridge across river Gandki at Hariharpur	Patna 2	24 May 2013	26 February 2014	8	157.35
7.	Bridge Near Khed chapra	Patna 2	26 December 2013	31 July 2014	7	64.39
8.	Bridge across river Daha at Harpur	Patna 2	24 July 2013	25 May 2014	10	186.08
9.	Bridge at Bhore -Pagara path on 5th KM	Patna 2	24 July 2013	15 February 2014	6	99.93
10.	Bridge across river Dhamai at Pachrukhiya	Patna 2	26 July 2013	02 June 2014	10	110.68
	Total					1639.63

Source: Information furnished by the Company

Annexure – 2.1.7

(Referred to in paragraph 2.1.22)

Statement showing delays in completion of approach roads in case of ongoing bridges under MMSNY Head

Sl.No.	Name of Bridge Completed during 2010-15	Name of Division	Date of Completion Bridge Portion	Lapse of time till June 2015 (in months)	Cost of Bridge portion (₹ in Lakh)
1.	Bridge between Saraiya Basantpur on Dhamai river	Patna 2	24 July 2013	23	273.75
2.	Bridge on Daha river connecting Madhwapur Bhakhari village	Patna 2	25 July 2013	23	241.84
3.	Bridge on Gandaki river at Mujhona village to Bhairopur	Patna 2	07 May 2014	13	173.83
4.	Bridge on Jamuniya river at Laluchack	Bhagalpur	30 September 2011	45	368.03
	Total				1057.45

Source: Information furnished by the Company

Annexure – 2.1.8

(Referred to in paragraph 2.1.26)

Statement showing construction of Chhatrawaas completed or to be completed

Amount ₹ in lakh

Sl.No.	Name of the Division/District	Amount of AA	Revised AA	Date of start of work	Actual date of completion	Expenditure incurred	Reason for non-completion
Works Division, Muzaffarpur							
1.	East Champaran	187.00	285.12	31-12-12	Yet to be completed	188.62	Revised AA has not yet been received
2.	Muzaffarpur	187.00	270.63	31-12-12	Yet to be completed	185.30	Revised AA has not yet been received
Works Division, Sitamarhi							
3.	Seowhar	187.00	-	-	-	0	Project returned due to non-availability of land
4.	Sitamarhi	187.00	286.29	01-01-13	Yet to be completed	185.30	
Works Division, Bettiah							
5.	West Champaran	187.00	308.02	26-06-12	Yet to be completed	185.17	Revised AA has not yet been received
Works Division, Nalanda							
6.	Lakhisarai	187.00	-	-	-	0	Project returned due to non-availability of land
7.	Nawada	187.00	-	-	-	5.45	Project returned due to non-availability of land
8.	Nalanda	187.00	261.35	20-12-11	15-12-13	239.80	
9.	Shekhpura	187.00	254.92	21-03-12	30-11-13	239.60	
Works Division, Bhagalpur							
10.	Jamui	187.00	257.33	22-12-11	31-10-13	208.40	
11.	Banka	187.00	263.88	31-03-13	30-03-14	261.60	
12.	Munger	187.00	279.07	26-07-13	Yet to be completed	159.69	Revised AA has not yet been received

13.	Bhagalpur	187.00	295.41	31-03-13	Yet to be completed	185.30	Revised AA has not yet been received
Works Division, Patna-2							
14.	Gopalganj	187.00	333.73	31-03-13	Yet to be completed	185.30	Revised AA has not yet been received
15.	Saran	187.00	324.00	28-02-13	Yet to be completed	185.30	Revised AA has not yet been received
16.	Siwan	187.00	-	-		0.97	Project returned due to non-availability of land
17.	Vaishali	187.00	-	-		0.65	Project returned due to non-availability of land

Source: Information furnished by the Company

Annexure-2.2.1

(Referred to in Paragraphs 2.2.1, 2.2.11, 2.2.18 and 2.2.20)

Statement showing details of projects under different schemes

Completed projects:

Sl. No.	Name of the project	Year of sanction	Administrative Approval (₹ in crore)	Fund received (₹ in crore)	Agreement Cost (₹ in crore)	Payment against work done (₹ in crore)	Scheduled date of completion as per the agreement	Actual date of completion	Time over run in months
	JnNURM (UIDSSMT⁴)								
1	Road Drainage project, Murliganj	2009-10	11.44	10.97	10.94	6.83	March 2012	September 2013	18
2	Road Drainage project, Narkatiaganj	2009-10	47.13	25.71	33.85	21.35	December 2012	February 2014	14
3	Road Drainage project, Bakhtiyarpur	2009-10	5.11	4.03	3.58	2.78	January 2012	July 2013	18
4	Road Drainage project, Rosera	2009-10	29.21	22.08	23.74	19.83	December 2012	May 2014	17
	JnNURM (UG⁵)								
5	Water Supply Scheme, Khagaul	2009-10	13.15	9.21	16.64	9.69	December 2012	December 2014	24
	05		106.04	72.00	88.75	60.48			

State funded projects									
6	Storm Water Drainage Scheme, Rajgir	2009-10	21.90	21.50	29.11	19.66	March 2014	February 2014	Nil
7	Sewerage System and Sewage Treatment Plant, Rajgir	2009-10	55.80	50.55	51.31	51.01	March 2015	March 2015	Nil
	Development of Park								

⁴ Urban Infrastructure Development Scheme for Small and Medium Towns.⁵ Urban Infrastructure and Governance.

Audit Report on Public Sector Undertakings for the year ended 31 March 2015

8	Kankerbagh	2009-10	0.65	0.65	0.98	0.94	August 2012	February 2014	18
	Shastripark		0.85	0.85	1.27	1.10	March 2013	March 2013	Nil
	Anishabad		0.70	0.70	0.62	0.75	September 2013	June 2014	9
9	Budha Smriti Park (BSP) and Museum	2009-10	149.18 ⁶	40.85 ⁷	125.53	41.21 ⁸	September 2013	Complete	Nil
10	Nooranibagh Park	2011-12	0.80	0.80	0.61	0.64	September 2013	November 2012	02
Total	05		229.88	115.90	209.43	115.31			

Incomplete projects

Sl. No.	Name of the project	Year of sanction	Administrative Approval (₹ in crore)	Fund received (₹ in crore)	Agreement Cost (₹ in crore)	Payment against work done up to July-2015 (₹ in crore)	Progress in per cent (col.7/col.6*100)	Scheduled date of completion as per agreement	Time over run in months up to July-15
1	2	3	4	5	6	7	8	9	10
	JnNURM (UIDSSMT)								
11	Water Supply Scheme, Muzaffarpur	2009-10	98.72	49.36	59.31	8.56	14.43	June 2014	13
	JnNURM (UIG)								
12	Water Supply Scheme, Phulwari	2009-10	24.70	17.29	27.68	15.56	56.21	March 2013	28
13	Water Supply Scheme, Bodh Gaya	2009-10	33.56	17.29	28.99	16.34	56.36	September 2013	22
14	Water Supply Scheme, Danapur	2009-10	68.96	31.03	70.18	9.24	13.17	September 2013	22
15	Water Supply Scheme, Patna	2010-11	427.00	157.48	548.83	59.90	10.91	March	16

⁶ ₹ 135.57 crore (BSP) + ₹ 13.61 crore (BSP Museum).

⁷ ₹ 27.24 crore (BSP) + ₹ 13.61 crore (BSP Museum).

⁸ ₹ 28.37 crore (BSP) + ₹ 12.84 crore (BSP Museum).

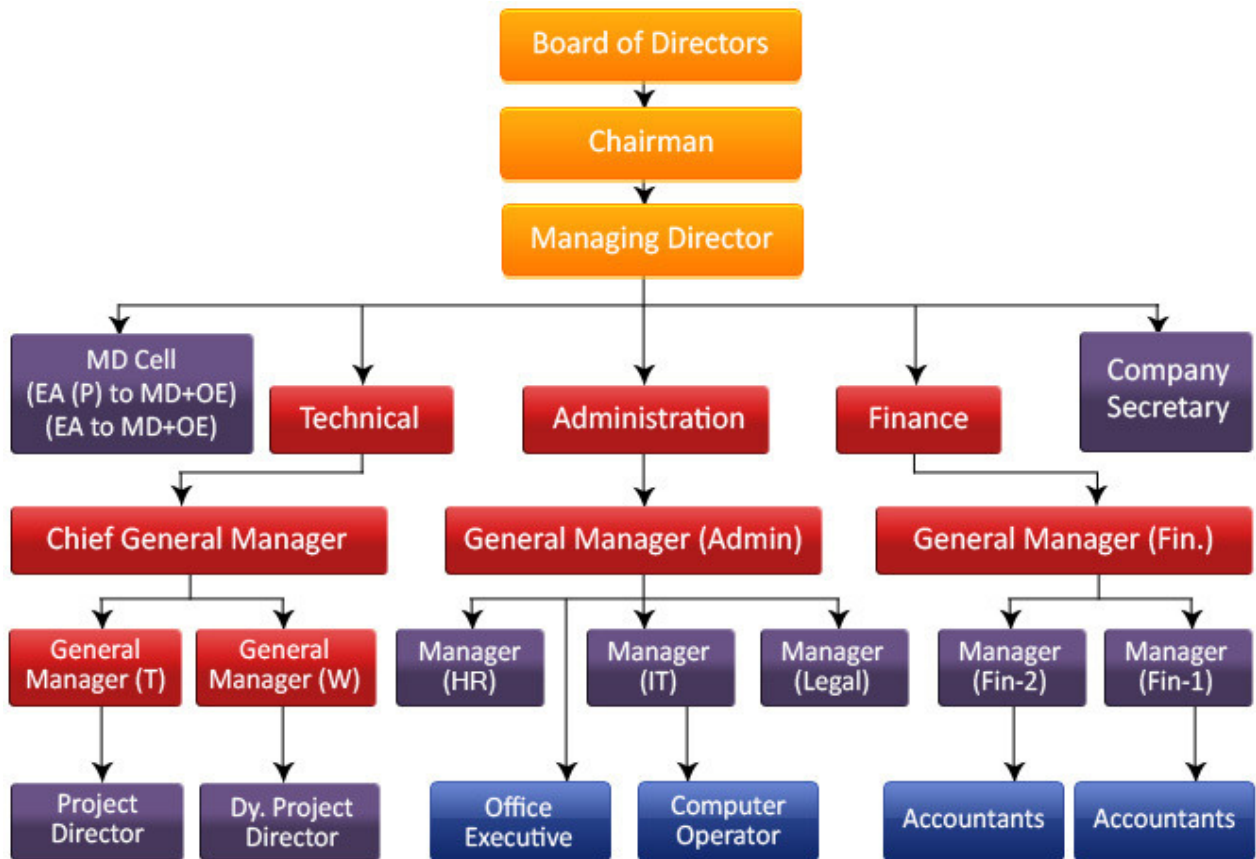
Sl. No.	Name of the project	Year of sanction	Administrative Approval (₹ in crore)	Fund received (₹ in crore)	Agreement Cost (₹ in crore)	Payment against work done up to July-2015 (₹ in crore)	Progress in per cent (col.7/col .6*100)	Scheduled date of completion as per agreement	Time over run in months up to July-15
1	2	3	4	5	6	7	8	9	10
								2014	
16	Sewerage System and Sewage Treatment Plant, Bodh Gaya	2009-10	95.94	49.89	92.72	59.16	63.80	December 2013	19
Total	06		748.88	322.50	827.71	168.76			
NGRBA Projects									
17	Sewerage System and Sewage Treatment Plant, Hazipur	2010-11	113.62	40.73	94.88	17.21	18.14	December 2013	19
18	Sewerage System and Sewage Treatment Plant, Begusarai	2010-11	65.40	20.09	58.88	4.13	7.01	December 2013	19
19	Sewerage System and Sewage Treatment Plant, Buxar	2010-11	74.95	19.69	52.05	6.61	12.70	December 2013	19
20	Sewerage System and Sewage Treatment Plant, Munger	2010-11	188.00	35.41	122.85	1.93	1.57	March 14	16
Total	04		441.97	115.92	328.66	29.88			
State Funded Infrastructural Development Projects									
21	Water Supply Scheme, Jhanjharpur	2012-13	4.43	1.60	4.16	0.31	7.45	September 2014	10
22	Water Supply Scheme, Naubatpur	2012-13	0.99	0.99	1.02	0.41	40.20	September 2014	10
23	Shahid Veer Kunwar Singh Ajadi Park	2012-13	8.37	7.58	7.56	4.84	64.02	May 2013	26
24	Renovation of Mauryalok Complex, Patna	2014-15	3.97	3.97	3.38	1.79	52.96	October 2014	09
25	Construction of Deluxe toilet:								
	Rajgir	2014-15	0.55	0.36	0.55	0.34	61.82	April 2014	15
	Bodhgaya		1.52	0.62	0.78	0.57	73.08	October 2013	22
	Gaya		0.13	0.55	0.12	21.82	April 2014	16	

Sl. No.	Name of the project	Year of sanction	Administrative Approval (₹ in crore)	Fund received (₹ in crore)	Agreement Cost (₹ in crore)	Payment against work done up to July-2015 (₹ in crore)	Progress in per cent (col.7/col.6*100)	Scheduled date of completion as per agreement	Time over run in months up to July-15
1	2	3	4	5	6	7	8	9	10
26	Construction of Bus terminal, Jehanabad	2014-15	5.29	4.00	2.68	1.36	32.46	April 2015	
27	Construction of Bus Que shelter at Patna	2014-15	15.36	7.50	13.72	7.67	55.90	-	-
Total	07		40.48	26.75	34.40	17.41			

Annexure-2.2.2

(Referred in Paragraph 2.2.1)

Organisational Chart



Annexure-2.2.3

(Referred to in Paragraph 2.2.5)

Financial Position and working results of Bihar Urban Infrastructure Development Corporation Limited

Financial Position

(₹ in crore)

Particulars	2010-11	2011-12	2012-13	2013-14	2014-15*
I. EQUITY AND LIABILITIES					
1. Shareholders' Funds					
(a) Share Capital	5.00	5.00	5.00	5.00	5.00
(b) Reserves & Surplus	0.27	2.98	5.50	14.28	22.62
2. Non-Current liabilities					
Other long term liabilities	162.68	346.99	497.35	5.58 ⁹	31.35
3. Current Liabilities					
(a) Other current liabilities	0.36	12.16	11.92	845.11	1103.40
(b) Short term provisions	0.33	0.97	3.79	12.14	10.93
Total Equity and Liabilities	168.64	368.10	523.56	882.11	1173.30
II. ASSETS					
1. Non Current Asset					
(a) Fixed Assets					
(i) Gross Block	1.28	1.46	2.16	2.48	2.80
Less Depreciation	0.12	0.23	0.44	0.82	1.53
Net Block	1.16	1.23	1.72	1.66	1.27
Capital work in progress	0	0	0	368.74	555.39
(b) Other Non-Current Assets	0.23	62.94	108.38	89.04	53.87
2. Current Assets					
(a) Civil WIP	0	4.72	139.55	0 ¹⁰	0
(b) Cash and Cash Equivalents	163.06	295.29	263.34	400.01	545.79
(c) Short term loans and Advances	3.59	0.08	0.33	10.82	11.51
(d) other current assets	0.60	3.84	10.24	11.84	5.47
Total	168.64	368.10	523.56	882.11	1173.30
Capital Employed¹¹	167.95	354.97	507.85	24.86	58.97
Net Worth¹²	5.27	7.98	10.50	19.28	27.62
Return on Capital Employed¹³ (in percent)	0.18	0.61	0.60	35.32	9.45

* Figures for the financial year 2014-15 are provisional.

⁹ The capital employed decreased in 2013-14 due to regrouping of fund received for execution of various projects as current liabilities, prior to 2013-14 it was shown under non-current liabilities.

¹⁰ Due to regrouping of figures in compliance of scheduled III of the Company's Act 2013.

¹¹ Capital employed represents net fixed Assets (including capital work in progress) plus working capital. Consequent upon amendment in Schedule IV of the Companies Act, 1956, Capital Employed has been computed as Shareholders fund (i.e. Share Capital, Share application money pending allotment and Free reserve after adjusting accumulated loss if any) plus Long term Borrowings.

¹² Net worth represents paid up capital + Reserves and surplus – intangible assets.

¹³ Return on Capital Employed represents profit after tax / capital employed × 100.

Working Results

(₹ in crore)

Particulars	2010-11	2011-12	2012-13	2013-14	2014-15*
Income					
Revenue from operations	1.57	11.10	107.72	220.93	205.43
Other Income	0.46	1.52	2.04	1.58	3.62
Total Revenue	2.03	12.62	109.76	222.51	209.05
Expenses					
Employee Benefit Expenses	0.79	1.50	2.11	2.64	3.39
Depreciation & Amortization Exp	0.17	0.30	0.21	0.45	0.70
Auditor's Remuneration	0.01	0.11	0.12	0.02	0.04
Administrative Expenses	0.60	1.64	2.67	2.98	3.68
Project Expenditure	0	4.37	98.82	205.48	193.20
Donation to CM Relief Fund	-	2.00	2.00	-	1.00
Total Expenses	1.57	9.92	105.93	211.57	202.08
Prior period income	00	00	00	0.17	00
Profit before Tax	0.46	2.70	3.83	11.11	7.04
Less : Provision for Income Tax	0.15	0.54	0.77	2.33	1.47
Profit after tax. C/F to Balance Sheet	0.31	2.16	3.06	8.78	5.57
Percentage of profit from operation to revenue from operations.	29.30	24.32	3.56	5.03	3.43
Centage & contingency earned	1.57	6.73	8.90	15.45	12.23

* Figures for the financial year 2014-15 are provisional.

Annexure-2.2.4

(Referred to in Paragraph 2.2.6)

Statement showing Scheme-wise receipt of funds during the five years ending on 31 March 2015.

(₹ in crore)

Scheme	2009-10	2010-11	2011-12	2012-13	2013-14	2014-15	Total
UIG	44.52	7.08	121.70	21.17	70.00	54.64	319.11
UIDSSMT	54.28	0.00	3.00	46.61	8.00	3.00	114.89
NGBRA	00	35.37	8.32	21.00	66.04	23.55	154.28
State Plan	2.20	13.31	33.10	24.59	56.14	92.94	222.28
ADB	0.00	0.00	0.00	0.00	14.35	45.65	60.00
BUIDF	0.00	0.00	0.00	0.00	41.07	28.67	69.74
Total	101	55.76	166.12	113.37	255.60	248.45	940.30

Annexure-2.2.5

(Referred to in paragraph 2.2.22)

Statement showing details of excess payment/unfruitful expenditure to CSQC

(₹ in crore)

Sl. No.	Name of Project	Agreement cost of the project	Expenditure incurred till March 2015	Maximum limit of expenditure to CSQC (As per policy)	Actual Amount paid to CSQC (till March 2015)	Progress of work in Percentage	Payment to CSQC, if linked to progress of work	Excess payment/unfruitful expenditure
1	2	3	4	5	6	7	8=5*7/100	9=6-8
1	Water Supply Scheme, Danapur	70.18	9.24	0.84	0.95	13.17	0.11	0.84
2	Water Supply Scheme, Phulwari	27.69	14.36	0.33	0.49	51.88	0.17	0.32
3	Water Supply Scheme, Muzaffarpur	59.31	8.56	0.71	0.68	14.43	0.10	0.58
4	Water Supply Scheme, Jhanjharpur	4.16	0.31	0.05	0.008	7.45	0.004	0.004
5	Water Supply Scheme, Bodhgaya	28.99	15.92	0.35	0.49	54.52	0.19	0.30
6	Water Supply Scheme, Patna	548.83	59.90	4.77	3.38	10.91	0.52	2.86
7	Sewerage System and Sewage Treatment Plant, Buxar	52.05	6.25	0.62	0.56	12.00	0.07	0.49
8	Sewerage System and Sewage Treatment Plant, Hazipur	94.88	15.21	1.14	0.71	16.03	0.18	0.53
9	Sewerage System and Sewage Treatment Plant, Munger	122.85	1.93	1.23	0.43	1.57	0.02	0.41
10	Sewerage System and Sewage Treatment Plant, Begusarai	58.88	3.75	0.71	0.73	6.37	0.05	0.68
11	Sewerage System and Sewage Treatment Plant, Bodhgaya	92.75	57.21	1.11	1.13	61.70	0.68	0.45
12	Storm Water Drainage Scheme and Sewerage System and Sewage Treatment Plant, Rajgir	85.10	62.54	1.02	2.54	82.48	0.84	1.70
13	Jehanabad Bus Stand	2.68	0.87	0.03	0.04	32.46	0.01	0.03
14	River Front Development, Patna	254.52	30.52	5.38	0.99	11.99	0.65	0.34
	Total		286.57		13.13		3.60	9.53