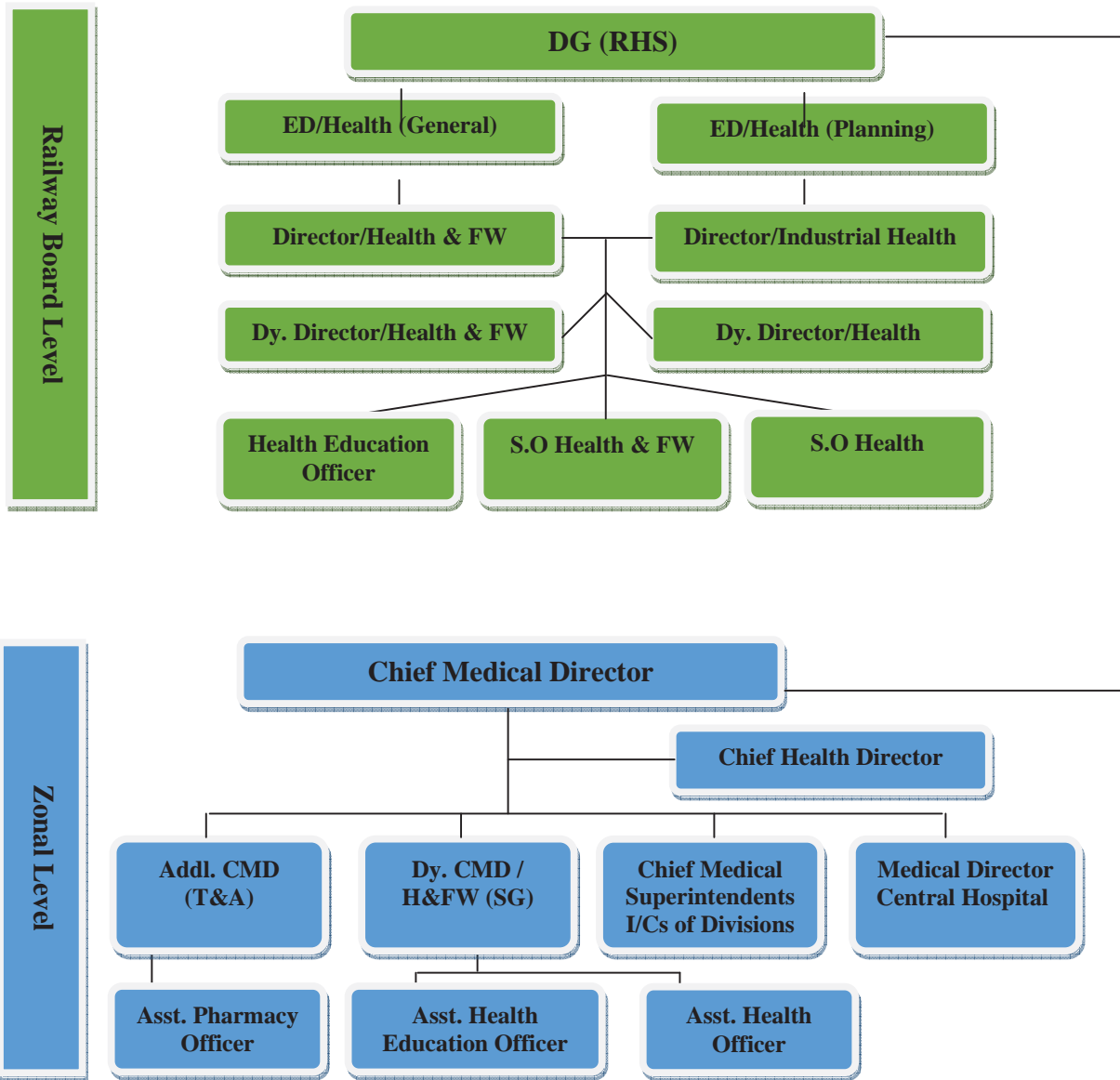


Appendix – I (Ref Para 1.1)

**Ministry of Railways
(Railway Board/Member (Staff))**



Source: www.indianrailways.gov.in

Appendix – II (Ref Para 1.4)**Statement showing the selection of sample size for test audit**

| Sl. No. | Description | Size | Total | Sample size selected | Per cent of Sample size selected |
|---------|--------------------------------------|---|-------|----------------------|----------------------------------|
| 1 | Central Hospital | 100 per cent | 17 | 17 | 100 |
| 2 | Super Specialty Hospital at Varanasi | 100 per cent | 1 | 1 | 100 |
| 3 | Production Unit Hospitals | 100 per cent | 5 | 5 | 100 |
| 4 | Divisional Hospital | i. One, where the number of hospital is less than four. ii. Two, where the number of hospital is equal to or more than four. | 55 | 22 | 40 |
| 5 | Sub-Divisional Hospitals | i. One, where the number of hospital is less than four ii. Two, where the number of hospital is equal to or more than four | 42 | 19 | 45 |
| 6 | Health Units | Five units from each zone. | 588 | 89 | 15 |
| 7 | Workshop Hospitals | One from each zone, wherever available | 9 | 5 | 56 |

Appendix – II (Ref Para 1.4)**Statement showing the selection of sample size for test audit**

| Sl. No | Zonal Railways | Central Hospital (100%) | Divisional Hospital | | Sub Divisional Hospital | | Workshop Hospitals | | Health Units | |
|--------|----------------|---|---------------------|----------------------------|-------------------------|--------------------------|--------------------|--|-------------------|--|
| | | | Available in Zone | Selected | Available in Zone | Selected | Available in Zone | Selected | Available in Zone | Selected |
| 1 | CR | Central Hospital , Byculla, Mumbai | 5 | 2 Kalyan, Pune | 5 | 2 Igatpuri, Manmad | | - | 33 | 5 Thane, Kalwa, Lonavala, Nasikroad, Ghorpuri |
| 2 | ER | Central Hospital , B.R.Singh Hospital. Sealdah/ Kolkata | 3 | 1 Malda | 2 | 1 Andal | 3 | 1 Kanchrapara Workshop Hospital | 45 | 5 Barddhaman Main, Naihati, Asansol Traffic, Liluah Workshop, Jamalpur Workshop |
| 3 | ECR | Central Hospital Patna | 5 | 2 Sonpur, Samastipur | 3 | 1 Gaya | 2 | 1 Rail Wheel Plant, Bela | 41 | 5 Gomoh Main, PC/Hajipur, Loco Danapur, Darbhanga, Imali Road /Muzaffarpur |
| 4 | ECoR | Central Hospital , Bhubneswar | 3 | 1 Khurda Road | NIL | - | NIL | - | 29 | 5 Vizainagaram, DLS/Vizag, Talcher, Brahmapur, Titlagarh |

| | | | | | | | | | | |
|----|-----|---|---|---|---|--|-----|--|----|---|
| 5 | NR | Central Hospital , New Delhi | 5 | 2 Charbagh- Lucknow, Moradabad | 3 | 1 Amritsar | 1 | 1 Jagadhari Workshop Hospital | 62 | 5 Arya Nagar at Ghaziabad, Amritsar Main, Ludhiana, C&W Lucknow, ROSA |
| 6 | NCR | Central Hospital , Allahabad | 3 | 1 Jhansi | 2 | 1 Kanpur | NIL | - | 27 | 5 Fatehpur, Mirzapur, Agra Fort, Mathura, Gwalior |
| 7 | NER | Central Hospital , Gorakhpur Super Speciality Hospital, Cancer Research Institute, Varanasi | 3 | 1 Badshahnagar | 1 | 1 Gonda | NIL | - | 27 | 5 Bareilly City, Basti, Deoria, Mau, Kanpur Anwarganj |
| 8 | NFR | Central Hospital , Maligoan, Guwahati | 3 | 1 Lumding | 5 | 2 New Jalpaiguri, New Tinsukia | 2 | 1 Dibrugarh | 45 | 5 Guwahati, New Coochbehar, Siliguri Town, Rangiya, Lumding South |
| 9 | NWR | Central Hospital, Jaipur | 3 | 1 Lalgarh | 4 | 2 Bandikui, Rewari | NIL | - | 31 | 5 Jaipur Hqrs, Gatore Jagtapura, Bikaner, Sadulpur, Suratgarh |
| 10 | SR | Central Hospital , Perambur, Chennai | 5 | 2 Golden Rock, Palghat | 4 | 2 Villupuram, Erode | NIL | - | 42 | 5 Sullurpet, Thanjavur, Salem, Trichur, Tirunelveli |

| | | | | | | | | | | |
|----|------|---|---|----------------------|-----|------------------------|-----|-------------|----|---|
| 11 | SCR | Central Hospital Lallaguda, Secunderabad | 3 | 1 Vijayawada | 2 | 1 Kazipet | 1 | 1 Rayanpadu | 44 | 5 Mahbubnagar , Renigunta, Ramagundam , Nanded, Guntur |
| 12 | SER | Central Hospital , Garden Reach /Kolkata | 4 | 2 Kharagpur, Adra | 2 | 1 Bondamunda | NIL | - | 38 | 5 Santragachi, Old Settlement and New Settlement in Kharagpur, North Settlement, Bokaro |
| 13 | SECR | Central Hospital , Bilaspur | 1 | 1 Raipur | 3 | 1 Shahadol | NIL | - | 18 | 5 Loco HU/ Bilaspur, Bhilai, PC/Motibagh/ Nagpur, Gondia, Dongargarh |
| 14 | SWR | Central Hospital , Hubli | 2 | 1 Bangalore | NIL | - | NIL | - | 21 | 5 Bangarpet, Loco Colony Mysore, Arsikere, Belgaum, Hospet |
| 15 | WR | Central Hospital , Jagjivan Ram Hospital Mumbai | 5 | 2 Pratapnagar Ratlam | 2 | 1 Valsad | 1 | 1 Dahod | 56 | 5 Bandra, Borivli, Ahmedabad, Godhra, Ujjain |
| 16 | WCR | Central Hospital , Jabalpur | 2 | 1 Kota | 4 | 2 New Katni Jn, Itarsi | NIL | - | 20 | 5 Satna, Narsinghpur, Swai Madhopur, Baran, Habibganj |

| | | | | | | | | | | |
|----|--------------|--|-----------|-----------|-----------|-----------|-----------|----------|------------|--|
| 17 | MR | Tapan Sinha Memorial Hospital, Kolkata | NIL | - | NIL | - | NIL | - | 3 | 3 Metro Bhavan Dispensary, Belgachia Lockup Dispensary, Noapara Firstaid Post |
| 18 | CLW | Kasturba Gandhi Hospital | NIL | - | NIL | - | NIL | - | 5 | 5 Amladari, Simjury, Fatehpur, SP North, SP East |
| 19 | DLW | Railway Hospital | NIL | - | NIL | - | NIL | - | 1 | 1 Dispensary, DLW |
| 20 | DMW | Railway Hospital, Patiala | NIL | - | NIL | - | NIL | - | NIL | - |
| 21 | RWF | Railway Hospital, Yelahanka | NIL | - | NIL | - | NIL | - | NIL | - |
| 22 | RCF | Lala Lajpat Rai Hospital, Kapurtala | NIL | - | NIL | - | NIL | - | NIL | - |
| | Total | 23 | 55 | 22 | 42 | 19 | 10 | 6 | 588 | 89 |

Appendix – III (Ref Para 2.2.II)**Statement showing variations between Budget Grant (BG)/Final Grant (FG) and the Actual Expenditure (AE) of “Hospitals at Production Units” (₹ in crore)**

| Year | BG | FG | AE | Variation between BG and AE (in per cent) | Variation between FG and AE (in per cent) |
|----------------|-------|-------|-------|---|---|
| 2008-09 | 29.64 | 36.35 | 16.91 | -42.95 | -53.48 |
| 2009-10 | 34.51 | 44.30 | 39.02 | 13.07 | -11.92 |
| 2010-11 | 36.98 | 45.80 | 60.51 | 63.63 | 32.12 |
| 2011-12 | 49.94 | 59.23 | 45.28 | -9.33 | -23.55 |
| 2012-13 | 65.49 | 75.18 | 52.16 | -20.35 | -30.62 |

Source: Demand for Grants

Appendix – IV (Ref Para 2.2.III)

Statement showing allotment and expenditure of funds and number of patients treated at Central Hospitals during 2008-13 (Allotment/Expenditure in ₹ in crore and Variation in per cent)

| | 2008-09 | | 2009-10 | | 2010-11 | | 2011-12 | | 2012-13 | |
|------------------|----------------|------------------------|----------------|------------------------|----------------|------------------------|----------------|------------------------|----------------|------------------------|
| | No of Patients | Allotment/ Expenditure | No of Patients | Allotment/ Expenditure | No of Patients | Allotment/ Expenditure | No of Patients | Allotment/ Expenditure | No of Patients | Allotment/ Expenditure |
| ECoR | 101176 | 2.04/2.09 | 98430 | 2.23/2.26 | 107488 | 2.44/2.59 | 107681 | 2.06/3.22 | 105612 | 2.08/3.71 |
| Variation | - | - | -2.71 | 9.31/8.13 | 9.2 | 10.76/14.60 | 0.18 | - | -1.92 | 0.97/15.22 |
| ER | 816098 | 8.54/25.09 | 910011 | 5.62/30.76 | 686387 | 9.11/37.53 | 619211 | 14.33/58.94 | 613453 | 10.39/55.29 |
| Variation | - | - | 11.51 | - | -24.57 | 62.10/22.01 | -9.79 | 57.30/57.05 | -0.93 | -27.49/-6.19 |
| NCR | 418684 | 32.92/32.06 | 203590 | 45.65/35.82 | 122624 | 39.95/37.08 | 84519 | 44.99/45.41 | 101319 | 51.87/50.54 |
| Variation | - | - | -51.37 | 38.67/11.73 | -39.77 | -12.94/3.52 | -31.07 | 12.62/22.46 | 19.88 | 15.29/11.30 |
| NR | 360181 | 61.29/46.02 | 359240 | 56.0/45.73 | 385328 | 47.9/45.66 | 369850 | 57.43/53.78 | 358525 | 59.5/53.89 |
| Variation | - | - | -0.26 | -8.63/-0.63 | 7.26 | -14.46/-0.15 | -4.02 | 19.90/17.78 | -3.06 | 3.60/0.20 |
| SECR | 130121 | 10.15/10.64 | 143671 | 13.06/13.21 | 170556 | 16.57/17.11 | 176314 | 16.52/18.59 | 176768 | 23.1/22.43 |
| Variation | - | - | 10.41 | 28.67/24.15 | 18.71 | 26.88/29.52 | 3.38 | -0.30/8.65 | 0.26 | 39.83/20.66 |
| SR | 390071 | 18.29/25.54 | 440688 | 18.67/24.09 | 451811 | 26.05/31.83 | 407378 | 23.03/39.07 | 461304 | 39.34/40.95 |
| Variation | - | - | 12.98 | 2.08/-5.68 | 2.52 | 39.53/32.13 | -9.83 | - | 13.24 | 70.82/4.81 |
| SWR | 341115 | 15.11/13.36 | 339555 | 16.78/15.23 | 409100 | 17.33/17.65 | 388286 | 18.23/17.88 | 347405 | 26.39/24.66 |
| Variation | - | - | -0.46 | 11.05/14.00 | 20.48 | 3.28/15.89 | -5.09 | 5.19/1.30 | -10.53 | 44.76/37.92 |
| WCR | 174986 | 9.75/11.22 | 168656 | 14.87/15.26 | 170963 | 12.67/15.51 | 186318 | 15.15/15.74 | 166304 | 17.52/17.15 |
| Variation | - | - | -3.61 | 53.54/36.01 | 1.37 | -14.79/1.64 | 8.98 | 19.57/1.48 | -10.74 | 15.64/8.96 |
| WR | 638460 | 46.2/46.79 | 599924 | 54.95/55.4 | 620138 | 60.86/62.69 | 606049 | 63.38/62.34 | 596367 | 68.88/68.73 |
| Variation | - | - | -6.04 | 18.94/18.40 | 3.37 | 10.76/13.16 | -2.27 | 4.14/-0.56 | -1.6 | 8.68/10.25 |
| MR | 44852 | 2.08/2.12 | 38680 | 2.92/2.96 | 42051 | 3.28/3.34 | 43609 | 3.66/3.69 | 43719 | 4.28/4.21 |
| Variation | - | - | -13.76 | 40.38/39.62 | 8.72 | 12.33/12.84 | 3.71 | 11.59/10.48 | 0.25 | 16.94/14.09 |

Source: CMD/CMSs OFFICES and Central Hospitals

Appendix – V (Ref Para 3.1.1 (I), (II) & (III))**Statement showing Shortage of Doctors in selected hospitals in 2012-13**

| Central Hospital | | | | |
|--|------------------------------------|--------------------------|---------------------|-----------------------------------|
| Name of the Hospital/Zone | Doctors as per sanctioned strength | No. of doctors available | Shortage of doctors | Percentage of shortage of doctors |
| CH, Byculla/CR | 41 | 27 | 14 | 34.15 |
| CH/ BBS/ECOR | 9 | 9 | 0 | 0.00 |
| CH/ Patna/ECR | 20 | 19 | 1 | 5.00 |
| CH/ Sealdah/ER | 73 | 67 | 6 | 8.22 |
| CH/ Allahabad/NCR | 57 | 54 | 3 | 5.26 |
| CH/ Gorakhpur/NER | 33 | 22 | 11 | 33.33 |
| CH/ Maligaon/NFR | 34 | 33 | 1 | 2.94 |
| CH/ NDLS/NR | 63 | 60 | 3 | 4.76 |
| CH/ Jaipur/NWR | 19 | 15 | 4 | 21.05 |
| CH/ LGD/SCR | 41 | 36 | 5 | 12.20 |
| CH/ Bilaspur/SECR | 30 | 29 | 1 | 3.33 |
| CH/Gardenreach/SER | 39 | 37 | 2 | 5.13 |
| CH/ Perumbur/SR | 72 | 67 | 5 | 6.94 |
| CH/ Hubli/SWR | 20 | 17 | 3 | 15.00 |
| CH/ Jabalpur/WCR | 17 | 13 | 4 | 23.53 |
| CH-JRH-BCT/WR | 43 | 37 | 6 | 13.95 |
| CH/MR | 6 | 5 | 1 | 16.67 |
| Production Units Hospital | | | | |
| CLW | 25 | 19 | 6 | 24.00 |
| DLW | 14 | 9 | 5 | 35.71 |
| RWF | 9 | 7 | 2 | 22.22 |
| DMW | 8 | 5 | 3 | 37.50 |
| RCF | 12 | 12 | 0 | 0.00 |
| Divisional/Sub-divisional Hospitals | | | | |
| DH/SDH Hospitals | 611 | 471 | 140 | 22.91 |

Source: CMD/CMSs OFFICES

Appendix – VI (Ref Para 3.1.1(I))**Statement showing Patient to Doctor Ratio in selected hospitals****Central Hospital**

| CH/Zonal Railway | OPD | IPD | Total No. of Patients | Doctors | Paramedical | No of Patients per One Doctor | No of Patients per One Paramedic |
|-------------------------|--------|-------|-----------------------------|---------|-------------|--|---|
| CH/Byculla/ CR | 238816 | 9663 | 248479 | 27 | 115 | 9202.93 | 2160.69 |
| CH/BBS / ECoR | 77316 | 1692 | 79008 | 9 | 99 | 8778.67 | 798.06 |
| CH/Patna / ECR | 89402 | 756 | 90158 | 19 | 111 | 4745.16 | 812.23 |
| CH/Sealdah / ER | 597424 | 16029 | 613453 | 67 | 538 | 9156.01 | 1140.25 |
| CH /Allahabad /NCR | 94751 | 6568 | 101319 | 54 | 912 | 1876.28 | 111.10 |
| CH / Gorakhpur/NER | 437592 | 11517 | 449109 | 22 | 142 | 20414.05 | 3162.74 |
| CH / Maligaon / NFR | 101905 | 7203 | 109108 | 33 | 119 | 3306.30 | 916.87 |
| CH / NDLS/ NR | 344107 | 14418 | 358525 | 60 | 510 | 5975.42 | 702.99 |
| CH / Jaipur/ NWR | 193493 | 6556 | 200049 | 15 | 137 | 13336.60 | 1460.21 |
| CH /LGD / SCR | 471650 | 12910 | 484560 | 36 | 364 | 13460.00 | 1331.21 |
| CH / Bilaspur / SECR | 171064 | 5704 | 176768 | 29 | 80 | 6095.45 | 2209.60 |
| CH/Garden reach/ SER | 174007 | 7746 | 181753 | 37 | 165 | 4912.24 | 1101.53 |
| CH/ PER/ SR | 442309 | 18995 | 461304 | 67 | 12 | 6885.13 | 38442.00 |
| CH/Hubli/ SWR | 335703 | 4529 | 340232 | 17 | 161 | 20013.65 | 2113.24 |
| CH / Jabalpur/WCR | 161164 | 5140 | 166304 | 13 | 50 | 12792.62 | 3326.08 |
| CH /JRH-BCT/ WR | 181496 | 11772 | 193268 | 37 | 121 | 5223.46 | 1597.26 |

Appendix – VI (Ref Para 3.1.1(III))

Statement showing Patient to Doctor Ratio in selected hospitals

Divisional and Sub –Divisional Hospital

| ZR | DH / SDH | Doctor | Paramedic | OPD | IPD | Total Patients | No. of Patients per Doctor | No. of Patients per Paramedic |
|------|-------------------------|--------|-----------|--------|-------|----------------|----------------------------|-------------------------------|
| CR | DH Kalyan | 15 | 134 | 331616 | 8385 | 340001 | 22667 | 2537 |
| | DH, Pune | 7 | 60 | 107982 | 2495 | 110477 | 15782 | 1841 |
| | SDH, Igatpuri | 2 | 23 | 39112 | 328 | 39440 | 19720 | 1715 |
| | SDH, Manmad | 1 | 12 | 23012 | 127 | 23139 | 23139 | 1928 |
| ECR | SDH, Gaya | 6 | 43 | 20858 | 912 | 21770 | 3628 | 506 |
| | SDH, Samastipur | 16 | 70 | 157675 | 2642 | 160317 | 10020 | 2290 |
| | SDH, Sonapur | 12 | 111 | 194859 | 4152 | 199011 | 16584 | 1793 |
| ECoR | Divl Hospital / KUR | 8 | 61 | 39902 | 1848 | 41750 | 5219 | 684 |
| ER | DH, MALDA | 9 | 135 | 132530 | 2791 | 135321 | 15036 | 1002 |
| | SDH, ANDAL | 7 | 59 | 58941 | 2047 | 60988 | 8713 | 1034 |
| NCR | DH, Jhansi / SDH Kanpur | 35 | 541 | 612273 | 12997 | 625270 | 17865 | 1156 |
| NEFR | New Jalpaiguri | 15 | 117 | 83940 | 4453 | 88393 | 5893 | 755 |
| | New Tinsukia | 6 | 55 | 27238 | 1042 | 28280 | 4713 | 514 |
| | Lumding | 13 | 63 | 138765 | 5565 | 144330 | 11102 | 2291 |
| NER | DH/BNZ, SDH, GD | 11 | 151 | 491617 | 8083 | 499700 | 45427 | 3309 |
| NR | DH, Moradabad Division | 10 | 35 | 143615 | 4309 | 147924 | 14792 | 4226 |
| | DH, Lucknow Division | 23 | 118 | 550173 | 8493 | 558666 | 24290 | 4734 |

| | | | | | | | | |
|------|---|-----|-----|--------|-----------|--------|-------|------|
| | SDH, Amritsar /Firozpur Division | 5 | 18 | 99560 | 1073 | 100633 | 20127 | 5591 |
| NWR | DH/SDHs | 12 | 135 | 324545 | 7093 | 331638 | 27637 | 2457 |
| SCR | DH/BZA | 24 | 174 | 424107 | 8495 | 432602 | 18025 | 2486 |
| SECR | D H/Raipur | 5 | 38 | 157331 | 4859 | 162190 | 32438 | 4268 |
| | SDH/ Sahadol | 3 | 16 | 29288 | 580 | 29868 | 9956 | 1867 |
| SER | DHs/SDH | 55 | 678 | 783504 | 1855 1 | 802055 | 14583 | 1183 |
| SR | DHs/SDHs | 101 | 588 | 487107 | 1036 7 | 497474 | 4925 | 846 |
| SWR | RH /SBC | 23 | 143 | 143431 | 3128 | 146559 | 6372 | 1025 |
| WCR | SDH, NKJ. | 4 | 0 | 121416 | 1999 | 123415 | 30854 | - |
| | SDH, Itarsi | 2 | 38 | 45417 | 933 | 46350 | 23175 | 1220 |
| | DH, Kota | 16 | 185 | 473289 | 8570 | 481859 | 30116 | 2605 |
| WR | DH, Pratapnagar | 9 | 52 | 243889 | 5748 | 249637 | 27737 | 4801 |
| | DH, Ratlam | 8 | 59 | 426248 | 7495 | 433743 | 54218 | 7352 |

Appendix VII

Annexure to Chapter 3 (Manpower Management)

| Reference | Zonal Railways | CH | DH | SDH | HU | WH |
|---|-------------------------|-----------------------|---|--|----|----|
| <i>Medical Equipments remained idle for different spells during the review period 2008-13</i> | | | | | | |
| Para 3.1.1 (IV) (ix) | SECR | Bilaspur | Raipur | | | |
| | NWR | Jaipur | Lalgarh | 1. Bandikui 2. Rewari | | |
| | CR | Byculla, Mumbai | 1. Kalyan 2. Pune | 1. Igatpuri 2. Manmad | | |
| | ER | Sealdah/ Kolkata | Malda | Andal | | |
| | WR | Mumbai | 1. Pratapnagar 2. Ratlam | Valsad | | |
| | NEFR | Maligoan, Guwahati | Lumding | 1. New Jalpaiguri 2. New Tinsukia | | |
| | NR | New Delhi | 1. Charbagh- Lucknow 2. Moradabad | Amritsar | | |
| | ECoR | Bhubaneswar | Khurda Road | | | |
| | CLW | Chittranjan | | | | |
| | DLW | Varanasi | | | | |
| TOTAL | (8 + 2) = 10 | (8 + 2) = 10 | 11 | 9 | | |
| <i>Medical Equipments procured but could not be utilized due to various reasons</i> | | | | | | |
| 3.1.3 .IV (iv) | WR | Mumbai | Pratapnagar | | | |
| | NCR | Allahabad | Jhansi | Kanpur | | |
| | MR | Kolkata | | | | |
| | CR | Byculla | | | | |
| TOTAL | 4 | 4 | 2 | 1 | | |
| <i>Perspective plan for training was not prepared by medical departments</i> | | | | | | |

| | | | | | | |
|-------------------|----------|----------------------------|---|--------------------------|---|-----------|
| Para 3.1.5 | CR | Byculla, Mumbai | 1. Kalyan 2. Pune | 1. Igatpuri 2. Manmad | 1. Thane 2. Kalwa, 3. Lonavala 4. Nasikroad 5. Ghorpuri | |
| | ECR | Patna | 1. Sonpur 2. Samastipur | Gaya | 1. Gomoh Main 2. Hajipur, 3. Danapur, 4. Darbhanga, 5. Imali Road /Muzaffarpur | |
| | NR | New Delhi | 1. Charbagh- Lucknow 2. Moradabad | Amritsar | 1. Arya Nagar (Ghaziabad) 2. Amritsar Main, 3. Ludhiana 4. C&W Lucknow | |
| | SER | Garden Reach, Kolkata | 1. Kharagpur 2. Adra | Bondamunda | 1. Santragachi, Old Settlement Kharagpur 3. New Settlement in Kharagpur 4. North Settlement 5. Bokaro | |
| | SCR | Lallaguda, Secunderabad | Vijayawada | Kazipet | 1. Mahbubnagar 2. Renigunta, 3. Ramagundam, 4. Nanded, 5. Guntur | Rayanpadu |
| | MR | Kolkata | | | 1. Metro Bhavan Dispensary, 2. Belgachia Lockup Dispensary, 3. Noapara Firstaid Post | |
| TOTAL: | 6 | 6 | 9 | 6 | 28 | 1 |

Source: Zonal Reports/Annexures

Appendix VIII (Para 4.1.2(I))

Statement showing the extra expenditure towards procurement of medicines on single tender basis under PAC category instead of procurement on limited tender basis in SCR

| Name of the Medicine | Quantity and rates for PAC category medicines procured on single tender basis | | | Total quantity of medicines procured under PAC on single tender basis and expenditure incurred | Rates in limited tender | Expenditure involved Quantity of medicines procured under PAC category at Limited tender rate | Differential Amount |
|---|---|-----------------------|-----------------------|--|-------------------------|---|---------------------|
| | 1 | 2 | 3 | | | | |
| | 2008-09 | 2010-11 | 2011-12 | | 2012-13 | | |
| Minipress XL 5mg | 94700 @ 96/15 tab | 193075 @ 95.50/15 tab | 107590 @ 90.45/15 tab | 395365 | 26.98 per ten tablet | | |
| Total | 606080 | 1229244 | 648768 | 2484092 | | 1066695 | 1417397 |
| Minipress XL 2.5mg | 104390 @ 71.80/15 tab | 310175 @ 77.48/15 tab | Nil | 414565 | 16.26 per ten tablet | | |
| Total | 499680 | 1602157 | | 2101837 | | 674083 | 1427754 |
| Taze Inj (Piperacillin 4000mg + Tazobactam 5 mg Inj) | Nil | Nil | 200 @ 615/1 unit | 200 | 68 per unit | | |
| Total | | | 123000 | 123000 | | 13600 | 109400 |
| Grand Total | | | | | | | 2954551 |

Source: Purchase Orders

| <i>Appendix IX</i> | | | | | | |
|--|----------------|----------------|------------|------------|-----------|--------|
| Annexure to Chapter 4 (Material Management) | | | | | | |
| Para Reference | Zonal Railways | CH | DH | SDH | HU | WH |
| <i>Incorrect assessment of medicines</i> | | | | | | |
| 4.1.2 (II) | ER | Sealdah | Malda | | | |
| | ECoR | BBS | KUR | | | |
| | | | VSKP | | | |
| | SWR | UBL | SBC | | | |
| ECR | | Samastipur | | | | |
| TOTAL | 4 | 3 | 5 | | | |
| <i>Delay in supply of medicine</i> | | | | | | |
| 4.1.2 (V) | ER | Sealdah | | | | |
| | ECoR | Bhubneshwar | | | | |
| | NR | New Delhi | Lucknow | | | |
| | | | Moradabad | | | |
| NWR | Jaipur | Lalgarh | | | | |
| TOTAL | 4 | 4 | 3 | | | |
| <i>Lack of space in hospitals</i> | | | | | | |
| 4.2 (I) | SCR | LGD | BZA | Kazipet | RDM | |
| | SER | | | Bondamonda | | |
| | SECR | Bilaspur | Raipur | | | |
| TOTAL | 3 | 2 | 2 | 2 | 1 | |
| <i>Storage conditions Lack of proper space</i> | | | | | | |
| 4.2 (II) | ECoR | Bhubneshwar | | | TIG | |
| | NCR | Allahabad | | | Agra Fort | |
| | NWR | | | | Bikaner | |
| | SCR | Lallaguda | Vijayawada | Kazipet | RDM | |
| | SWR | Hubli | Bangalore | | | |
| | SER | | | Bondamonda | | |
| | WCR | Jabalpur | | | | |
| | WR | Mumbai Central | | Ratlam | Valsad | Bandra |
| Borivali | | | | | | |
| Ahmedabad | | | | | | |
| Dahod | | | | | | |
| | | | | | Vadodara | |
| TOTAL | 8 | 6 | 3 | 3 | 9 | |
| <i>Seepage from roofs and walls</i> | | | | | | |

| | | | | | | |
|--|----------|--------------|-------------------|------------|--------------------------------------|-----------|
| 4.2 (III) | CR | Byculla | | | | |
| | ECoR | BBS | | | | |
| | NER | | | | Deoria | |
| | WCR | Jabalpur | | | | |
| | WR | | | | Bandra | |
| TOTAL | 5 | 3 | | | 2 | |
| Departmental Stock Verification | | | | | | |
| 4.3 (I) | CR | | Kalyan | Manmad | Lonavala | |
| | | | Pune | Igatpuri | Nasik | |
| | | | | | Ghorpuri | |
| | | | | | Thana | |
| | Kalva | | | | | |
| | ER | Seldah | Malda | Andal | | |
| | NFR | Maligaon | Lumding | | Lumding South | Dibrugarh |
| | | | | | Rangiya | |
| | | | | | New Coochbehar | |
| | | | | | Guwahathi | |
| | SER | Garden Reach | Kharagpur Adra | Bondamonda | Santragachi, Old settlement | |
| | | | | | New settlement in Kharagpur division | |
| | | | | | North settlement | |
| | | | | | Bokaro in Adra division | |
| | SR | Perambur | Golden Rock | | | |
| Palghat | | | | | | |
| SWR | Hubli | SBC | | | | |
| WCR | Jabalpur | | | | | |
| MR | Kolkata | | | | | |
| TOTAL | 8 | 7 | 10 | 4 | 14 | |
| Expired medicine | | | | | | |
| 4.4 (I) | CR | Byculla | | | | |
| | ER | | | Andal | | |
| | WR | JRH | Sabarmati | | | |

| | | | | | | |
|------------------------------------|----------|-----------|----------------------|----------|----------|--------------|
| | | | Ratlam | | | |
| | NEFR | Maligaon | | | | Dibrugarh |
| | NER | | Badshahnagar | | | |
| TOTAL | 5 | 3 | 3 | 1 | | 1 |
| Shortfall in drug (2008-09) | | | | | | |
| 4.5 (I) | CR | Byculla | Pune | | | |
| | | | Bhusaval | | | |
| | | | Solapur | | | |
| | | | Kalyan | | | |
| | ECoR | BBS | Khurda Road | | | |
| | NFR | Maligaon | New Jalpaiguri | | | Dibrugarh |
| | NER | Gorakhpur | Badshahnagar | | | |
| | NR | New Delhi | Charbagh Lucknow | | | Jagadhari |
| | NWR | Jaipur | | | | |
| | SCR | Lallaguda | | | | RU |
| | | | | | | Mahboobnagar |
| | SECR | Bilaspur | | | | |
| MR | Kolkata | | | | | |
| Total | 9 | 9 | 8 | | 2 | 2 |
| Shortfall in drug (2009-10) | | | | | | |
| 4.5 (I) | CR | Byculla | Pune | | | |
| | | | Bhusaval | | | |
| | | | Solapur | | | |
| | | | Kalyan | | | |
| | ECoR | | KUR | | | |
| | NFR | | New Jalpaiguri | | | Dibrugarh |
| | | | Tinsukia | | | |
| | NER | Gorakhpur | Badshahnagar | | | |
| | NR | New Delhi | Charbagh- Lucknow | | | Jagadhari |
| | NWR | Jaipur | | | | |
| | SCR | Lallaguda | | | | RU |
| | | | | | | Mahboobnagar |
| Total | 7 | 5 | 9 | | 2 | 2 |
| Shortfall in drug (2010-11) | | | | | | |
| 4.5 (I) | NFR | Maligaon | Tinsukia | | | |
| | | | New Jalpaiguri | | | |
| | NER | | Badshahnagar | | | |

| | | | | | | | |
|------------------------------------|----------|--------------|----------------------|-------------------------------------|--------------|-----------|-----------|
| | NR | New Delhi | Charbagh- Lucknow | | | Jagadhari | |
| | NWR | Jaipur | | | | | |
| | SCR | Lallaguda | BZA | | RU | | |
| | | | | | Mahboobnagar | | |
| Total | 5 | 4 | 5 | | 2 | 1 | |
| Shortfall in drug (2011-12) | | | | | | | |
| 4.5 (I) | ECoR | | KUR | | | | |
| | NFR | Maligaon | Tinsukia | | | Dibrugarh | |
| | | | New Jalpaiguri | | | | |
| | NR | New Delhi | | | | Jagadhari | |
| | NWR | Jaipur | | | | | |
| | NER | | Badshahnagar | | | | |
| Total | 5 | 3 | 4 | | | 2 | |
| Shortfall in drug (2012-13) | | | | | | | |
| 4.5 (I) | CR | | Pune | | | | |
| | | | Bhusaval | | | | |
| | | | Solapur | | | | |
| | | | Kalyan | | | | |
| | NFR | | Tinsukia | | | | |
| | | | New Jalpaiguri | | | | Dibrugarh |
| | NR | New Delhi | | Moradabad | | | |
| | | | Charbagh | | | | |
| NWR | Jaipur | | | | | | |
| Total | 4 | 2 | 8 | | | 1 | |
| Substandard Drugs | | | | | | | |
| 4.5 (III) | SECR | Bilaspur | Raipur | | | | |
| | NWR | CH/Jaipur | | | Bikaner | | |
| | ECoR | BBS | KUR | | | | |
| | ER | CH/ Sealdah | | | | | |
| | WR | JRH-BCT | | Pratapnagar | | Ahmedabad | |
| | | | | Ratlam | | | |
| | | | | Rajkot | | | |
| | | | | Bhavnagar | | | |
| | | | | Divisional Medical Store/ BCT | | | |
| | NFR | Maligaon | Lumding | | | | |
| NER | | Badshahnagar | | | | | |

| | | | | | | |
|--|------------|------------|--------------|----------|-----------|-------------|
| | WCR | Jabalpur | Kota | NKJ | | |
| TOTAL: | 8 | 7 | 10 | 1 | 2 | |
| Substandard Drugs | | | | | | |
| 4.5 (III) | ER | | | | | Kanchrapara |
| | WR | JRH-BCT | Ratlam | | Ahmedabad | |
| | | | Rajkot | | | |
| MR | Kolkata | | | | | |
| TOTAL: | 3 | 2 | 2 | | 1 | 1 |
| Equipments each costing more than Rs. 15 lakh sanctioned during 2008-13 were not procured | | | | | | |
| 4.6 (II) | CR | Byculla | | | | |
| | ECoR | BBS | KUR | | | |
| | ER | Sealdah | | | | |
| | NCR | Allahabad | Jhansi | Kanpur | | |
| | NER | Gorakhpur | CRI/BSB | | | |
| | NEFR | Maligaon | | | | |
| | NR | New Delhi | Moradabad | | | |
| | SCR | CH/LGD | BZA | | | |
| | SECR | Bilaspur | | | | |
| | SER | GRC | KGP | | | |
| | SR | PER | CMS/GOC | | | |
| | | | CMS/MDU | | | |
| | | | CMS/PGT | | | |
| | SWR | UBL | SBC | | | |
| | WR | Mumbai | | | | |
| | MR | Tollygunge | | | | |
| TOTAL | 14 | 14 | 10 | 1 | | |
| Equipments each cost less than Rs. 15 lakh which were sanctioned during 2008-13 crore were not procured | | | | | | |
| 4.6 (II) | ER | Sealdah | Malda | | | Kanchrapara |
| | NCR | Allahabad | Jhansi | Kanpur | | |
| | NER | | Badshahnagar | | | |
| | SECR | Bilaspur | | | Nagpur | |
| | SER | GRC | KGP | | | |
| | WR | | Pratapnagar | | | |
| | | | | Ratlam | Valsad | |
| | NWR | Jaipur | | | Bikaner | |
| MR | Tollygunge | | | | | |
| TOTAL: | 8 | 6 | 6 | 2 | 2 | 2 |
| Non-commissioning of Medical Equipment | | | | | | |

| | | | | | | |
|--|----------|-----------|--------------|------------|--|--|
| 4.6 (III) | ECoR | BBS | | | | |
| | NCR | | Jhansi | Kanpur | | |
| | NR | New Delhi | | | | |
| | NWR | CH/Jaipur | | | | |
| | SCR | LGD | | | | |
| | SECR | Bilaspur | | | | |
| | SER | GRC | KGP | | | |
| | SR | | Palghat | | | |
| | WR | BCT | | | | |
| TOTAL | 9 | 7 | 3 | 1 | | |
| <i>Maintenance of History cards/ Log books for records relating to down time of medical equipment</i> | | | | | | |
| 4.6.1 (I) | ECoR | BBS | | | | |
| | NCR | | Jhansi | | | |
| | NER | CRI/BSB | | | | |
| | SR | Perambur | | | | |
| | WCR | Jabalpur | | New Katni | | |
| | | | | Etarsi | | |
| Total | 5 | 4 | 1 | 2 | | |
| <i>Medical Equipments each costing more than Rs. 15 lakh remained out of order</i> | | | | | | |
| 4.6.1 (II) | ECoR | BBS | | | | |
| | ER | Sealdah | | | | |
| | NER | | CRI/BSB | | | |
| | NCR | | Jhansi | | | |
| | NR | New Delhi | | | | |
| | SCR | LGD | | | | |
| | SER | GRC | | | | |
| | WR | | Pratapnagar. | | | |
| TOTAL | 8 | 5 | 3 | | | |
| <i>Patients referred to recognized Private Hospitals</i> | | | | | | |
| 4.6.1 (VI) | ER | Sealdah | Malda | | | |
| | NCR | Allahabad | Jhansi | | | |
| | | | | Sub Kanpur | | |
| | NER | Gorakhpur | Badshahnagar | Gonda | | |
| TOTAL | 3 | 3 | 3 | 2 | | |

Source: Zonal reports/Annexures

| Appendix X (Ref para 4.1.3 (II)) | | | | |
|--|---------|---|--|--|
| Statement Showing local purchase of medicine and surgical items more than 15 per cent of Budget Allotment | | | | |
| Zonal Railway | Year | Budget allotment of Medicine & Surgical items | Total expenditure incurred on local purchase | Per Cent of local purchase w.r.t. Budget allotment |
| CR | 2008-09 | 123209 | 29948 | 24.31 |
| ECoR | 2008-09 | 49075 | 9062 | 18.47 |
| NCR | 2008-09 | 69119 | 51711 | 74.81 |
| NFR | 2008-09 | 113923 | 10724 | 9.41 |
| NER | 2008-09 | 62310 | 33800 | 54.24 |
| NWR | 2008-09 | 131601 | 54835 | 41.67 |
| SECR | 2008-09 | 41056 | 12808 | 31.2 |
| SER | 2008-09 | 110243 | 58631 | 53.18 |
| SR | 2008-09 | 74703 | 37693 | 50.46 |
| WCR | 2008-09 | 43461 | 22410 | 51.56 |
| WR | 2008-09 | 256859 | 49338 | 19.21 |
| MR | 2008-09 | 7000 | 3275 | 46.79 |
| CR | 2009-10 | 115767 | 50814 | 43.89 |
| ECoR | 2009-10 | 45531 | 10123 | 22.23 |
| NCR | 2009-10 | 83371 | 61564 | 73.84 |
| NFR | 2009-10 | 116566 | 17477 | 14.99 |
| NER | 2009-10 | 65676 | 40809 | 62.14 |
| NWR | 2009-10 | 139466 | 73722 | 52.86 |
| SECR | 2009-10 | 58729 | 16143 | 27.49 |
| SER | 2009-10 | 101623 | 52415 | 51.58 |
| SR | 2009-10 | 126210 | 35782 | 28.35 |
| SWR | 2009-10 | 56288 | 95706 | 170.03 |
| WCR | 2009-10 | 46372 | 18470 | 39.83 |
| WR | 2009-10 | 309479 | 92154 | 29.78 |
| MR | 2009-10 | 7295 | 3118 | 42.74 |
| CR | 2010-11 | 169269 | 56637 | 33.46 |
| ECoR | 2010-11 | 50500 | 12778 | 25.3 |
| NCR | 2010-11 | 108433 | 52730 | 48.63 |
| NFR | 2010-11 | 105601 | 16403 | 15.53 |

| | | | | |
|-------------|---------|--------|--------|--------|
| NER | 2010-11 | 83859 | 52554 | 62.67 |
| NWR | 2010-11 | 110392 | 74407 | 67.4 |
| SECR | 2010-11 | 66239 | 14237 | 21.49 |
| SER | 2010-11 | 132421 | 35687 | 26.95 |
| SR | 2010-11 | 174809 | 31000 | 17.73 |
| WCR | 2010-11 | 52572 | 23338 | 44.39 |
| WR | 2010-11 | 287604 | 75321 | 26.19 |
| MR | 2010-11 | 7147 | 1989 | 27.83 |
| CR | 2011-12 | 196186 | 33180 | 16.91 |
| ECoR | 2011-12 | 49424 | 16377 | 33.14 |
| ER | 2011-12 | 362395 | 31294 | 8.64 |
| NCR | 2011-12 | 130591 | 40550 | 31.05 |
| NFR | 2011-12 | 134158 | 16424 | 12.24 |
| NER | 2011-12 | 84454 | 37110 | 43.94 |
| NWR | 2011-12 | 105968 | 131324 | 123.93 |
| SECR | 2011-12 | 48287 | 13514 | 27.99 |
| SER | 2011-12 | 152980 | 35653 | 23.31 |
| SR | 2011-12 | 188943 | 28597 | 15.14 |
| SWR | 2011-12 | 69928 | 30795 | 44.04 |
| WCR | 2011-12 | 57966 | 25436 | 43.88 |
| WR | 2011-12 | 312823 | 84463 | 27 |
| MR | 2011-12 | 11133 | 2483 | 22.3 |
| CR | 2012-13 | 148720 | 47763 | 32.12 |
| ECoR | 2012-13 | 44997 | 15780 | 35.07 |
| ER | 2012-13 | 434118 | 41747 | 9.62 |
| NCR | 2012-13 | 117617 | 53988 | 45.9 |
| NFR | 2012-13 | 125004 | 27104 | 21.68 |
| NER | 2012-13 | 115409 | 44523 | 38.58 |
| NWR | 2012-13 | 145599 | 126660 | 86.99 |
| SECR | 2012-13 | 34783 | 24455 | 70.31 |
| SER | 2012-13 | 146571 | 45031 | 30.72 |
| SR | 2012-13 | 270145 | 28674 | 10.61 |
| SWR | 2012-13 | 84920 | 129443 | 152.43 |
| WCR | 2012-13 | 76891 | 22270 | 28.96 |
| WR | 2012-13 | 338465 | 80343 | 23.74 |
| MR | 2012-13 | 13000 | 2242 | 17.25 |

| <i>Appendix XI</i> | | | | | | |
|--|-----------------------|-----------|-----------------------|---------------------|---|----------------|
| Annexure to Chapter 5 (Hospital Administration) | | | | | | |
| Para Reference | Zonal Railways | CH | DH | SDH | HU | WH |
| <i>Status of implementation of HMIS</i> | | | | | | |
| 5.1 | NR | New Delhi | | | | |
| | SCR | | Guntakal | | | |
| | ECR | Patna | | | | |
| | NER | Gorakhpur | | | | |
| | SECR | Bilaspur | | | | |
| | ER | Seladah | Malda | | | |
| TOTAL | 6 | 5 | 2 | | | |
| <i>Medical Identity cards not updated</i> | | | | | | |
| 5.2.2 (I) | SCR | Lallaguda | Vijayawada, Guntur | Kazipet | 1. Chilkalaguda 2. Guntur 3. Renigunta 4. DRM office, Nanded 5. Mahabubnagar | Rayana padu |
| | CR | Byculla | Kalyan, Pune | Igatpuri, Manmad | Thane Kalva Lonawala Nasik Road Station Ghorpuri | |
| | NWR | Jaipur | | | | |
| TOTAL | 3 | 3 | 4 | 3 | 10 | 1 |
| <i>Non-maintenance of medical history folders</i> | | | | | | |
| 5.2.3 (I) | CR | Byculla | Kalyan, Pune | Igatpuri, Manmad | Thane Kalva Lonawala Nasik Road Station Ghorpuri | |
| | SWR | Hubli | SBC | | Bangrapet Loco Colony Mysore Arsikere Belgaum Hospet | |

| | | | | | | |
|---|-----------|-------------------|--------------------|-------------------------|---|----------|
| | NWR | Jaipur | Lalgarh | Bandikui, Rewari | Bikaner Sadulpur Suratgarh Jaipur Jagatpur | |
| | WCR | Jabalpur | Kota | New Katni Jn, Itarsi | Habibgunj Narsinghpur Satna Sawai Madhopur Baran | |
| | SER | Garden Reach | Kharagpur, Adra | Bondamunda | Santragachi New Settlement (KGP) Old Settlement (KGP) North Settlement (Bokaro) North Settlement (Adra) | |
| | WR | Mumbai Central | Pratapnagar | Valsad | Bandra Borivali Ahmedabad Godhra Ujjain | Dahod |
| | MR | Kolkata | | | Metro Bhawan Belgachia Lockup Noapara | |
| | CLW | | | | Amaladhi Simjury Fatehpur SP East SP West | |
| | DLW | | | | DLW | |
| | CLW | | | | CLW | |
| TOTAL | 10 | 7 | 8 | 8 | 40 | 1 |
| <i>Non Recovery of diet charges in respect of treatment at CGHS package rates</i> | | | | | | |

| | | | | | | |
|---------------------------|----------|-------------------|------------------------|-------------------------|--|----------------|
| 5.4 (IV) (i) | NR | New Delhi | Charbagh, Moradabad | Amritsar | Arya Nagar Ghaziabad DLI Amritsar (FZR) Ludhiana (FZR) C&W Lucknow (LKO) Rosa (MB Dn) | Jagadh ari |
| | SR | Perambur | GOC | | | |
| | WCR | Jabalpur | Kota | New Katni Jn, Itarsi | Habibgunj Narsinghpur Satna Sawai Madhopur Baran | |
| | WR | Mumbai Central | Pratapnagar, Ratlam | Valsad | Bandra Borivali Ahmedabad Godhra Ujjain | Dahod |
| TOTAL | 4 | 4 | 5 | 4 | 15 | 2 |
| MEDICAL AUDIT | | | | | | |
| 5.9.1 (II) | CR | | Kalyan, | Igatpuri | | |
| | | | Pune | Manmad | | |
| | ER | | | Andal | | |
| | SR | Perambur | | Villupuram | | |
| | | | | Erode | | |
| WCR | | | New Katni | | | |
| TOTAL | 4 | 1 | 2 | 6 | | |
| FIRE DRILLS | | | | | | |
| PARA 5.9.3(ii) | SCR | Lallaguda | Vijayawada | Kazipet | Chilkalaguda (SC) | Rayana padu |
| | | | Guntur | | Guntur (GNT) | |
| | | | | | Renigunta (GTL) | |
| | | | | | DRM office, Nanded | |
| | | | | | Mahabubnagar (HYB) | |
| | ECoR | Bhubaneswar | Khurda Road | | Vizianagaram | |
| | | | | | Talcher | |
| | | | | | Brahmpur | |
| | | | Titlagarh | | | |

| | | | | | | |
|---------------------|-----------|--------------|-------------|----------|-----------------------------|---------------|
| | CR | Byculla | Kalyan | Igatpuri | Thane | |
| | | | Pune | Manmad | Kalva | |
| | | | | | Lonawala | |
| | | | | | Nasik Road Station | |
| | | | | | Ghorpuri | |
| | NR | New Delhi | Charbagh- I | Amritsar | Arya Nagar Ghaziabad DLI | |
| | | | Lucknow | | Amritsar (FZR) | |
| | | | | | Ludhiana (FZR) | |
| | | | | | C&W Lucknow (LKO) | |
| | SECR | Bilaspur | Raipur | Shahdol | Bilaspur (Bilaspur) | |
| | | | | | Bhilai (Raipur) | |
| | | | | | Motibagh Nagpur (Nagpur) | |
| | | | | | Gondia (Nagpur) | |
| | MR | Kolkata | | | | |
| | ER | | | Andal | | |
| | NWR | Jaipur | | | | |
| | CLW | Chittaranjan | | | | |
| | DLW | Varanasi | | | | |
| | DMW | Patiala | | | | |
| | RCF | Kapurthala | | | | |
| TOTAL | 12 | 11 | 8 | 6 | 23 | 1 |
| TELEMEDICINE | | | | | | |
| PARA 5.9.4 (I) | CR | Byculla | Kalyan | Igatpuri | Thane | |
| | | | Pune | Manmad | Kalva | |
| | | | | | Lonawala | |
| | | | | | Nasik Road Station | |
| | | | | | Ghorpuri | |
| | NR | New Delhi | Charbagh- I | Amritsar | Arya Nagar Ghaziabad DLI | Jagadh ari |
| | | | Lucknow | | Amritsar (FZR) | |
| | | | | | Ludhiana (FZR) | |

| | | | | | | |
|--------------|-----------|------------------------------------|--------------|--------------|--------------------|-------------|
| | | | | | C&W Lucknow (LKO) | |
| | | | | | Rosa (MB Dn) | |
| | NER | Gorakhpur | Badshahnagar | Gonda | Bareilly City | |
| | | Super Specialty Hospital, Varanasi | | | Basti | |
| | | | | | Deoria | |
| | | | | | Mau | |
| | | | | | Anwarganj (Kanpur) | |
| | SCR | Lallaguda | Vijayawada | Kazipet | Chilkalaguda (SC) | Rayana padu |
| | | | Guntur | | Guntur (GNT) | |
| | | | | | Renigunta (GTL) | |
| | | | | | DRM office, Nanded | |
| | | | | | Mahabubnagar (HYB) | |
| | SWR | Hubli | Bangalore | | Bangarpet | |
| | | | | | Loco Colony Mysore | |
| | | | | | Arsikere | |
| | | | | | Belgaum | |
| | | | | | Hospet | |
| | WCR | Jabalpur | Kota | New Katni Jn | Habibgunj | |
| | | | | Itarasi | Narsinghpur | |
| | | | | | Satna | |
| | | | | | Sawai Madhopur | |
| | | | | | Baran | |
| | MR | Kolkata | | | | |
| | DLW | Varanasi | | | | |
| | DMW | Patiala | | | | |
| | RCF | Kapurthala | | | | |
| | RWF | Yelahanka | | | | |
| Total | 11 | 12 | 9 | 7 | 30 | 2 |

Source: Zonal reports/Annexures

| Appendix XII (Reference Para 5.3.2 (IV)) | | | | | | | | | | | | | | |
|---|-----------------|-------------------|-------------------------|------------------------|-------------------------|-----------------------|--------------------|----------------------------|----------------------|-----------------------|--------------------|------------------|------------------|---|
| Statement showing shortage in the extent of minimum hospital specialty services at selected Divisional Hospitals | | | | | | | | | | | | | | |
| Zone | Hospital | No of Beds | General Medicine | General Surgery | Gynae & Obst | Dental Surgery | Paediatrics | Orthopedics Surgery | Ophthalmology | Chest Medicine | ENT Surgery | Radiology | Pathology | Shortage in number of Speciality |
| CR | Pune | 50 | Yes | Yes | Yes | | | | Yes | | | | Yes | 7 |
| ECoR | Khurda Road | 80 | Yes | Yes | | Yes | Yes | | | | | | Yes | 7 |
| ER | Malda | 101 | Yes | Yes | Yes | | Yes | | Yes | | | | | 7 |
| NCR | Jhansi | 205 | Yes | Yes | Yes | | Yes | Yes | | Yes | Yes | | | 5 |
| NWR | Lalgarh | 100 | Yes | Yes | Yes | Yes | Yes | Yes | Yes | Yes | | Yes | | 3 |

Source: Respective Zonal websites

APPENDIX XIII (Reference Para 5.4(c))

| STATEMENT SHOWING LOSS DUE TO INADEQUATE PROVISION OF OVERHEAD FOR CALCULATING THE COST OF DIET | | | | | | | | | | | | | | | |
|---|------------|--------------------------|----------------------------|--------------------------------|----------|--------------------------|----------------------------|--------------------------------|------------|--------------------------|---|---|--------------------------------|---------|---|
| Zonal Railways | 2008-09 | | 2009-10 | | 2010-11 | | 2011-12 | | 2012-13 | | Shortfall in charging overhead Hospital on diet | Actual expenditure incurred by the Hospital on diet | Shortfall in charging overhead | Total | |
| | Hospital | Amount due from patients | Actual Expenditure on diet | Shortfall in charging overhead | Hospital | Amount due from patients | Actual Expenditure on diet | Shortfall in charging overhead | Hospital | Amount due from patients | | | | | Actual expenditure incurred by the Hospital on diet |
| CR | CH | 26406 | 101712 | 75306 | 0 | 30968 | 39500 | 0 | CH | 26055 | 125450 | 99395 | 127140 | 73350 | 333675 |
| | DH/SDH | | | | | | | | DH/SDH | | | | | | 30968 |
| ECR | CH | | | | 0 | | | | CH | | | | | | 0 |
| | DH/SDH (1) | 7602.00 | 50000.00 | 42398 | 0 | 38357 | 65337 | 0 | DH/SDH | | | | | | 0 |
| ECaR | CH | | | | 0 | 114913 | 160303 | 0 | CH | 89315 | 155374 | 66059 | 197780 | 76989 | 282466 |
| | DH/SDH | | | | 0 | 250960 | 421443 | 0 | DH/SDH (1) | 235539 | 462772 | 227233 | 450120 | 273340 | 984749 |
| | WSH | | | | 0 | | | | WSH | | | | | | 0 |
| ER | CH | 29351 | 119199 | 89848 | 0 | 5478310 | 5478310 | 0 | CH | 5516488 | 6032918 | 516430 | 7132393 | 1069371 | 3613853 |
| | DH/SDH (2) | 140509 | 348687 | 208178 | 0 | 439229 | 202942 | 0 | DH/SDH (2) | 221135 | 379648 | 158513 | 349602 | 148048 | 860771 |
| | WSH | 51570 | 646654 | 595084 | 0 | 629433 | 629433 | 0 | WSH | 133997 | 438517 | 304520 | 322764 | 220345 | 2164047 |
| NCR | CH | 6966 | 14706 | 7740 | 0 | 13860 | 13860 | 0 | CH | 2943 | 9156 | 6213 | 78624 | 65016 | 105798 |
| | DH/SDH (1) | | | | 0 | | | | DH/SDH (1) | | | | | | 0 |
| | WSH | | | | 0 | | | | WSH | | | | | | 0 |
| NEFR | CH | 874956 | 2212257 | 1337301 | 0 | 2308362 | 2308362 | 0 | CH | 1377947 | 2908290 | 1530343 | 2981256 | 2375953 | 7221403 |
| | DH/SDH (2) | 261422 | 466354 | 204932 | 0 | 466962 | 466962 | 0 | DH/SDH (2) | 424891 | 567308 | 142417 | 479281 | 131923 | 694302 |
| | WSH | 234271 | 406789 | 172518 | 0 | 108538 | 108538 | 0 | WSH | 383834 | 623575 | 239741 | 663894 | 373601 | 1075819 |
| NER | CH | 868525 | 999759 | 131234 | 0 | 1118033 | 1118033 | 0 | CH | 1223640 | 1318046 | 94406 | 1061834 | 81314 | 902719 |
| | DH/SDH (2) | 150012 | 455116 | 305104 | 0 | 448538 | 159298 | 0 | DH/SDH (2) | 414945 | 620150 | 205205 | 502605 | 526597 | 239 |
| | WSH | | | | 0 | | | | WSH | | | | | | 0 |
| NR | CH | 617454 | 1938418 | 1320964 | 0 | 3528497 | 3528497 | 0 | CH | 920796 | 3164604 | 2243808 | 3658512 | 2625220 | 12236365 |
| | DH/SDH (3) | 52317 | 744645 | 692328 | 0 | 674792 | 619779 | 0 | DH/SDH (3) | 77328 | 417904 | 340576 | 523795 | 466723 | 2527219 |
| | WSH | 713 | 70798 | 70085 | 0 | 57037 | 56127 | 0 | WSH | 0 | 27876 | 27876 | 11302 | 11302 | 208964 |
| NWR | CH | | | | 0 | | | | CH | | | | | | 0 |
| | DH/SDH (1) | | | | 0 | 12886 | 12886 | 0 | DH/SDH | | | | | | 23665 |
| | WSH | | | | 0 | | | | WSH | | | | | | 0 |
| SCR | CH | 0 | 2414715 | 2414715 | 0 | 963152 | 2523150 | 0 | CH | 996734 | 2244789 | 1248055 | 2221742 | 1402419 | 7004293 |
| | DH/SDH | | | | 0 | | | | DH/SDH | | | | | | 0 |
| | WSH | | | | 0 | | | | WSH | | | | | | 0 |
| SECR | CH | 121440 | 427950 | 306510 | 0 | 567311 | 567311 | 0 | CH | 277311 | 838906 | 561595 | 853950 | 556019 | 2143667 |
| | DH/SDH (1) | 22165 | 73928 | 51763 | 0 | 129899 | 83974 | 0 | DH/SDH (1) | 37125 | 117837 | 80712 | 76835 | 63580 | 341800 |
| | WSH | | | | 0 | | | | WSH | | | | | | 0 |

Hospital Management in Indian Railways

| STATEMENT SHOWING LOSS DUE TO INADEQUATE PROVISION OF OVERHEAD FOR CALCULATING THE COST OF DIET | | | | | | | | | | | | | | | | | | | |
|---|--------------|---------|----------|----------|--------------|----------|----------|----------|--------------|----------|----------|---------|--------------|----------|--------------|----------|----------|----------|----------|
| SER | CH | 1854907 | 2295786 | 440873 | CH | 1859628 | 2973108 | 1113480 | CH | 2084708 | 2953385 | 868677 | CH | 953642 | CH | 2375295 | 3994572 | 1619277 | 4995949 |
| | DH/SDH (2) | 702431 | 1197281 | 494850 | DH/SDH (3) | 367088 | 670920 | 303832 | DH/SDH (3) | 710466 | 1359961 | 649495 | DH/SDH (3) | 549711 | DH/SDH (3) | 778539 | 1754262 | 975723 | 2973611 |
| | WSH | | | 0 | WSH | | | 0 | WSH | | | | WSH | | WSH | | | | 0 |
| SR | CH | 1566720 | 1929112 | 362392 | CH | 1864800 | 2610876 | 746076 | CH | 649825 | 877000 | 227175 | DH/SDH (1) | 37705 | DH/SDH (1) | 685780 | 771743 | 85963 | 1108468 |
| | DH/SDH | 2106240 | 2683949 | 577709 | DH/SDH (2) | 470270 | 506460 | 36190 | DH/SDH (3) | | | | | | | | | | 964742 |
| SWR | CH | | | 0 | CH | 540588 | 1061934 | 521346 | CH | | | | CH | | CH | 584854 | 847263 | 262409 | 1031322 |
| | DH/SDH (1) | 81129 | 125585 | 44456 | DH/SDH (1) | 78050 | 134631 | 56581 | DH/SDH (1) | 83561 | 123649 | 4008800 | DH/SDH (1) | 247567 | DH/SDH (1) | 61406 | 100236 | 38830 | 206612 |
| WGR | CH | 233440 | 482851 | 249411 | CH | 252886 | 471016 | 218130 | CH | 285042 | 518072 | 233030 | CH | 370670 | CH | 460029 | 686233 | 226204 | 1297445 |
| | DH/SDH (3) | 180037 | 646810 | 614853 | DH/SDH (3) | 200138 | 449933 | 411665 | DH/SDH (2) | 157823 | 497663 | 339840 | DH/SDH (2) | 283135 | DH/SDH (2) | 157116 | 511639 | 354523 | 2004016 |
| | WSH | | | 0 | WSH | | | 0 | WSH | | | | WSH | | WSH | | | | 0 |
| WR | CH | | | 0 | CH | | | 0 | CH | | | | CH | | CH | 3779485 | 5466958 | 1687473 | 2765723 |
| | DH/SDH (4) | 465576 | 1524535 | 1058959 | DH/SDH (4) | 496296 | 1568158 | 1071862 | DH/SDH (4) | 832739 | 2040885 | 1208146 | DH/SDH (4) | 1119205 | DH/SDH (4) | 486817 | 1750365 | 1263548 | 5721720 |
| | WSH | 156177 | 323055 | 166878 | WSH | 200848 | 355641 | 154793 | WSH | 237206 | 489961 | 252755 | WSH | 355421 | WSH | 0 | 459497 | 459497 | 1389344 |
| Metro Railway | | | | 0 | | | | 0 | | 80914 | 388699 | 307785 | | 437537 | | 436244 | 862762 | 426518 | 1171840 |
| CLW | Chittaranjan | 166807 | 511912 | 345105 | Chittaranjan | 170114 | 596167 | 426053 | Chittaranjan | 389804 | 525274 | 135470 | Chittaranjan | 614254 | Chittaranjan | 154255 | 555302 | 401047 | 1709030 |
| DLW | Varanasi | 39817 | 64482 | 24665 | Varanasi | 45037 | 80362 | 35325 | Varanasi | 30740 | 58363 | 27623 | Varanasi | 17180 | Varanasi | 71400 | 81058 | 9658 | 114451 |
| DMW | Patiala | | | 0 | Patiala | | | 0 | Patiala | | | | Patiala | | Patiala | | | | 0 |
| RCF | Kapurthala | 0 | 876404 | 876404 | Kapurthala | 0 | 1346633 | 1346633 | Kapurthala | 0 | 1287082 | 1287082 | Kapurthala | 1427924 | Kapurthala | 0 | 1642177 | 1642177 | 6580220 |
| RWF | Yelahanka | | | 0 | Yelahanka | | | 0 | Yelahanka | | | | Yelahanka | | Yelahanka | | | | 0 |
| Total | CH | 6399823 | 14374551 | 7974728 | CH | 13788472 | 24824062 | 11035590 | CH | 12737478 | 22410435 | 9672957 | CH | 11294216 | CH | 17835554 | 32370932 | 14535398 | |
| | DH/SDH | 4176406 | 8342375 | 4314049 | DH/SDH | 3074801 | 6630587 | 3717656 | H | 3748511 | 7370287 | 3621776 | DH/SDH | 3177282 | H | 3481890 | 7373099 | 3891209 | |
| | WSH | 442731 | 1447296 | 1004565 | WSH | 611863 | 1516351 | 904488 | WSH | 695904 | 1632722 | 936818 | WSH | 927558 | WSH | 392712 | 1457457 | 1064745 | |
| 2008-09 | | | | 13293342 | 2009-10 | | | 15657734 | 2010-11 | | 14231551 | | 2011-12 | | 15399056 | 2012-13 | | 19491352 | 78073035 |