

# Annexures

**Annexure – 1.1**

**Statement showing particulars of up to date paid-up capital, loans outstanding and manpower as on 31 March 2013 in respect of Government companies and Statutory corporation**  
(Referred to in paragraph 1.8)

Sl. No.	Sector & Name of the Company	Name of the Department	Month and year of incorporation	Paid-up Capital <sup>†</sup>			Loans outstanding at the close of 2012-13			Debt equity ratio for 2012-13 (Previous year)	Manpower (No. of employees as on 31.3.2013)		
				State Government	Central Government	Others	Total	State Government	Central Government			Others	Total
(1)	(2)	(3)	(4)	5 (a)	5 (b)	5 (c)	5 (d)	6 (a)	6 (b)	6 (c)	6 (d)	(7)	(8)
<b>A. Working Government Companies</b>													
<b>AGRICULTURE &amp; ALLIED</b>													
1.	Jharkhand State Forest Development Corporation Limited	Forest & Environment	27.3.2002	5.00	-	-	5.00	-	-	-	-	-	318
2.	Jharkhand Hill Area Lift Irrigation Corporation Limited	Water Resources	22.3.2002	500.00	-	-	500.00	525.00	-	-	525.00	1.05:1	219
<b>Sector wise total</b>				<b>505.00</b>	<b>-</b>	<b>-</b>	<b>505.00</b>	<b>525.00</b>	<b>-</b>	<b>-</b>	<b>525.00</b>	<b>1.04:1</b>	<b>537</b>
<b>INFRASTRUCTURE</b>													
3.	Jharkhand Industrial Infrastructure Development Corporation Limited	Industry	15.12.2004	900.00	-	-	900.00	-	-	-	-	-	15
4.	Jharkhand Police Housing Corporation Limited	Home	13.03.2002	200.00	-	-	200.00	-	-	-	-	-	42
5.	Greater Ranchi Development Agency Limited	Urban Development	23.01.2003	2500.00 (2450.00)	-	-	2500.00 (2450.00)	-	-	-	-	-	17
<b>Sector wise total</b>				<b>3600.00 (2450.00)</b>	<b>-</b>	<b>-</b>	<b>3600.00 (2450.00)</b>	<b>-</b>	<b>-</b>	<b>-</b>	<b>-</b>	<b>-</b>	<b>74</b>
<b>MANUFACTURING</b>													
6.	Jharkhand Silk Textile and Handicraft Development Corporation Limited	Industry	23.08.2006	1000.00	-	-	1000.00	-	-	725.00	725.00	0.73:1	267
7.	Jharkhand State Mineral Development Corporation Limited	Mines & Geology	07.05.2002	200.00	-	-	200.00	-	-	-	-	-	365
<b>Sector wise total</b>				<b>1200.00</b>	<b>-</b>	<b>-</b>	<b>1200.00</b>	<b>-</b>	<b>725.00</b>	<b>725.00</b>	<b>725.00</b>	<b>0.60:1</b>	<b>632</b>
<b>POWER</b>													
8.	Tenughat Vidyut Nigam Limited	Energy	26.11.1987	10500.00	-	-	10500.00	66589.87	-	-	66589.87	6.34:1	674
9.	Karapura Energy Limited	Energy	19.09.2008	-	-	5.00	5.00	-	-	1195.75	1195.75	239.15:1	❖
<b>Sector wise total</b>				<b>10500.00</b>	<b>-</b>	<b>5.00</b>	<b>10505.00</b>	<b>66589.87</b>	<b>-</b>	<b>1195.75</b>	<b>67785.62</b>	<b>6.45:1</b>	<b>674</b>

*Audit Report on Public Sector Undertakings for the year ended 31 March 2013*

Sl. No.	Sector & Name of the Company	Name of the Department	Month and year of incorporation	Paid-up Capital <sup>§</sup>			Loans outstanding at the close of 2012-13				Debt equity ratio for 2012-13 (Previous year)	Manpower (No. of employees as on 31.3.2013)	
				State Government	Central Government	Others	Total	State Government	Central Government	Others			Total
(1)	(2)	(3)	(4)	5 (a)	5 (b)	5 (c)	5 (d)	6 (a)	6 (b)	6 (c)	6 (d)	(7)	(8)
<b>SERVICES</b>													
10.	Jharkhand Tourism Development Corporation Limited	Tourism	22.3.2002	300.00 (50.00)	-	-	300.00 (50.00)	-	-	-	-	-	92
11.	Jharkhand State Beverages Corporation Limited	Excise & Prohibition	26.11.2010	500.00 (300.00)	-	-	500.00 (300.00)	25.00	-	-	25.00	0.05:1	16
12.	Jharkhand State Food and Civil Supplies Corporation Limited	Public Distribution & Consumer Affairs	18.06.2010	500.00	-	-	500.00	4396.00	-	-	4396.00	8.79:1	268
13.	Jharkhand State Minorities Finance Development Corporation	Welfare	15.03.2012	#	-	-	-	-	-	-	-	-	-
<b>Sector wise total</b>				<b>1300.00 (350.00)</b>	<b>-</b>	<b>-</b>	<b>1300.00 (350.00)</b>	<b>4421.00</b>	<b>-</b>	<b>-</b>	<b>4421.00</b>	<b>3.40:1</b>	<b>376</b>
<b>Total A (All sector wise working Government companies) (Share Application Money)</b>				<b>17105.00 (2800.00)</b>	<b>-</b>	<b>5.00</b>	<b>17110.00 (2800.00)</b>	<b>71535.87</b>	<b>-</b>	<b>1920.75</b>	<b>73456.62</b>	<b>4.29:1</b>	<b>2293</b>
<b>B. Working Statutory corporations</b>													
<b>POWER</b>													
1.	Jharkhand State Electricity Board	Energy	20.3.2001	-	-	-	-	548281.00	-	21791.27	570072.27	-	5480
<b>Sector wise total</b>				<b>-</b>	<b>-</b>	<b>-</b>	<b>-</b>	<b>548281.00</b>	<b>-</b>	<b>21791.27</b>	<b>570072.27</b>	<b>-</b>	<b>5480</b>
<b>Total B (All sector wise working Statutory corporations)</b>				<b>-</b>	<b>-</b>	<b>-</b>	<b>-</b>	<b>548281.00</b>	<b>-</b>	<b>21791.27</b>	<b>570072.27</b>	<b>-</b>	<b>5480</b>
<b>Grand Total (A + B) (Share Application Money)</b>				<b>17105.00 (2800.00)</b>	<b>-</b>	<b>5.00</b>	<b>17110.00 (2800.00)</b>	<b>619816.87</b>	<b>-</b>	<b>23712.02</b>	<b>643528.89</b>	<b>37.61:1</b>	<b>7773</b>
<b>C. Non working Government companies</b>													
<b>D. Non working Statutory corporations</b>													
<b>Grand Total (A + B + C + D) (Share Application Money)</b>				<b>17105.00 (2800.00)</b>	<b>-</b>	<b>5.00</b>	<b>17110.00 (2800.00)</b>	<b>619816.87</b>	<b>-</b>	<b>23712.02</b>	<b>643528.89</b>	<b>37.61:1</b>	<b>7773</b>

Source: Data furnished by Government companies/Statutory corporation.

The figures appearing in brackets in col. 5(a) & 5(d) represent Share Application Money.

§ Paid-up capital includes Share Application Money.

❖ The affairs of the company are managed by the officials of the JSEB.

# Subscribed capital of ₹ 1.00 lakh has not been paid by the Government yet.

## Annexure – 1.2

**Statement showing equity, loans, grants and subsidy received/receivable, guarantees received, waiver of dues, loans written off and loans converted into equity during the year and guarantee commitment at the end of March 2013**  
(Referred to in paragraph 1.11)

(Figures in column 3 (a) to 6 (d) are ₹ in lakh)

Sl. No.	Sector & Name of the Company	Equity/loans received out of budget during the year		Grants and subsidy received during the year			Guarantees received during the year and commitment at the end of the year		Waiver of dues during the year				
		Equity	Loans	Central Government	State Government	Others	Total	Received	Commitment	Loans repayment written off	Loans converted into equity	Interest/penal interest waived	Total
(1)	(2)	3 (a)	3 (b)	4 (a)	4 (b)	4 (c)	4 (d)	5 (a)	5 (b)	6 (a)	6 (b)	6 (c)	6 (d)
<b>A. Working Government Companies</b>													
<b>INFRASTRUCTURE</b>													
1.	GRDA	1400.00	-	-	-	-	-	-	-	-	-	-	-
<b>Sector wise total</b>		<b>1400.00</b>	<b>-</b>	<b>-</b>	<b>-</b>	<b>-</b>	<b>-</b>	<b>-</b>	<b>-</b>	<b>-</b>	<b>-</b>	<b>-</b>	<b>-</b>
<b>MANUFACTURING</b>													
2.	JHARCRAFT	50.00	-	-	-	-	-	-	-	-	-	-	-
<b>Sector wise total</b>		<b>50.00</b>	<b>-</b>	<b>-</b>	<b>-</b>	<b>-</b>	<b>-</b>	<b>-</b>	<b>-</b>	<b>-</b>	<b>-</b>	<b>-</b>	<b>-</b>
<b>AGRICULTURE</b>													
3.	JHALCO	-	-	-	542.00	-	542.00	-	-	-	-	-	-
<b>Sector wise total</b>		<b>-</b>	<b>-</b>	<b>-</b>	<b>542.00</b>	<b>-</b>	<b>542.00</b>	<b>-</b>	<b>-</b>	<b>-</b>	<b>-</b>	<b>-</b>	<b>-</b>
<b>SERVICES</b>													
4.	JTDC	50.00	-	-	-	-	-	-	-	-	-	-	-
5.	JSBCL	-	2000.00 <sup>#</sup>	-	-	-	-	-	-	-	-	-	-
6.	JFCSCL	-	-	-	7500.00	-	7500.00	-	-	-	-	-	-
<b>Sector wise total</b>		<b>50.00</b>	<b>2000.00</b>	<b>-</b>	<b>7500.00</b>	<b>-</b>	<b>7500.00</b>	<b>-</b>	<b>-</b>	<b>-</b>	<b>-</b>	<b>-</b>	<b>-</b>
<b>Total A (All sector wise working Government companies)</b>		<b>1500.00</b>	<b>2000.00</b>	<b>-</b>	<b>8042.00</b>	<b>-</b>	<b>8042.00</b>	<b>-</b>	<b>-</b>	<b>-</b>	<b>-</b>	<b>-</b>	<b>-</b>
<b>B. Working Statutory corporations</b>													
<b>Power</b>													
1.	JSEB	-	54170.00	-	110725.00	-	110725.00	-	-	-	-	-	-
<b>Sector wise total</b>		<b>-</b>	<b>54170.00</b>	<b>-</b>	<b>110725.00</b>	<b>-</b>	<b>110725.00</b>	<b>-</b>	<b>-</b>	<b>-</b>	<b>-</b>	<b>-</b>	<b>-</b>
<b>Total B (All sector wise working Statutory corporations)</b>		<b>-</b>	<b>54170.00</b>	<b>-</b>	<b>110725.00</b>	<b>-</b>	<b>110725.00</b>	<b>-</b>	<b>-</b>	<b>-</b>	<b>-</b>	<b>-</b>	<b>-</b>
<b>Grand Total (A + B)</b>		<b>1500.00</b>	<b>56170.00</b>	<b>-</b>	<b>118767.00</b>	<b>-</b>	<b>118767.00</b>	<b>-</b>	<b>-</b>	<b>-</b>	<b>-</b>	<b>-</b>	<b>-</b>

Source: Data furnished by Government companies/Statutory corporation.

<sup>#</sup> Repayment of ₹ 1975 lakh was made during the year by the Company

Annexure – 1.3

**Summarised financial results of Government companies and Statutory corporation for the latest year for which accounts were finalised**  
(Referred to in paragraph 1.15)

(Figures in column 5 (a) to (11) are ₹ in lakh)

Sl. No.	Sector & Name of the Company	Period of Accounts	Year in which finalised	Net Profit (+)/ Loss (-)		Net Profit/ Interest	Depreciation	Net Profit/ Loss	Turnover	Impact of Accounts Comments <sup>#</sup>	Paid up Capital	Accumulated Profit (+)/ Loss (-)	Capital employed <sup>@</sup>	Return on capital employed <sup>\$</sup>	Percentage return on capital employed
				Net Profit/ Loss before Interest & Depreciation	5 (a)										
<b>A. Working Government Companies</b>															
<b>AGRICULTURE &amp; ALLIED</b>															
1.	Jharkhand State Forest Development Corporation Limited	2011-12	2012-13	671.55	-	-	10.06	661.49	6369.74	-	5.00	1689.02	1694.02	661.49	39.05
2.	Jharkhand Hill Area Lift Irrigation Corporation Limited	2009-10	2013-14	(-)133.39	-	-	0.73	(-)134.12	71.02	36.28	500.00	(-)1040.86	(-)15.86	(-)134.12	-
<b>Sector wise total</b>				<b>538.16</b>	<b>-</b>	<b>-</b>	<b>10.79</b>	<b>527.37</b>	<b>6440.76</b>	<b>36.28</b>	<b>505.00</b>	<b>648.16</b>	<b>1678.16</b>	<b>527.37</b>	<b>31.43</b>
<b>INFRASTRUCTURE</b>															
3.	Jharkhand Industrial Infrastructure Development Corporation Limited	2010-11	2013-14	38.14	-	-	2.48	35.66	51.00	1.47	500.00	112.13	612.13	35.66	5.83
4.	Jharkhand Police Housing Corporation Limited	2011-12	2012-13	186.41	-	-	6.16	180.25	239.97	-	200.00	1572.11	1772.11	180.25	10.17
5.	Greater Ranchi Development Agency Limited <sup>1</sup>	2011-12	2013-14	320.14	-	-	1.54	318.61	-	-	1100.00 (1050.00)	736.73	1836.73	318.61	17.35
<b>Sector wise total</b>				<b>544.69</b>	<b>-</b>	<b>-</b>	<b>10.18</b>	<b>534.52</b>	<b>290.97</b>	<b>1.47</b>	<b>1800.00 (1050.00)</b>	<b>2420.97</b>	<b>4220.97</b>	<b>534.52</b>	<b>12.66</b>
<b>MANUFACTURING</b>															
6.	Jharkhand Silk Textile and Handicraft Development	2011-12	2013-14	200.50	95.83	-	71.27	33.40	1867.89	(-)15.17	950.00 (150.00)	63.16	1013.16	129.23	12.76

Sl. No.	Sector & Name of the Company	Period of Accounts	Year in which finalised	Net Profit (+)/ Loss (-)			Turnover	Impact of Accounts Comments <sup>4</sup>	Paid up Capital	Accumulated Profit (+)/ Loss (-)	Capital employed <sup>5</sup>	Return on capital employed <sup>5</sup>	Percentage return on capital employed (12)	
				Net Profit/ Loss before Interest & Depreciation	Net Profit/ Interest	Depreciation								Net Profit/ Loss
(1)	(2)	(3)	(4)	5 (a)	5 (b)	5 (c)	5 (d)	(6)	(7)	(8)	(9)	(10)	(11)	(12)
7.	Corporation Limited Jharkhand State Mineral Development Corporation Limited <sup>1</sup>	2008-09	2013-14	1409.10	-	15.00	1394.10	5190.59	-	200.00	9824.24	10024.24	1394.10	13.91
<b>Sector wise total</b>				<b>1609.60</b>	<b>95.83</b>	<b>86.27</b>	<b>1427.50</b>	<b>7058.48</b>	<b>(-15.17)</b>	<b>1150.00 (150.00)</b>	<b>9887.40</b>	<b>11037.40</b>	<b>1523.33</b>	<b>13.80</b>
<b>POWER</b>														
8.	Tenughat Vidyut Nigam Limited <sup>1</sup>	1999-00	2013-14	5183.65	9957.73	9276.61	(-14050.69)	19587.66	-	10000.00	(-27772.19)	154848.92	(-4092.96)	-
9.	Karampura Energy Limited <sup>1</sup>	\$\$	-	-	-	-	-	-	-	-	-	-	-	-
<b>Sector wise total</b>				<b>5183.65</b>	<b>9957.73</b>	<b>9276.61</b>	<b>(-14050.69)</b>	<b>19587.66</b>	<b>-</b>	<b>10000.00</b>	<b>(-27772.19)</b>	<b>154848.92</b>	<b>(-4092.96)</b>	<b>-</b>
<b>SERVICES</b>														
10.	Jharkhand Tourism Development Corporation Limited	2004-05	2012-13	15.61	-	4.19	11.42	103.38	1.47	50.00	44.30	94.30	11.42	12.11
11.	Jharkhand State Beverages Corporation Limited	2011-12	2012-13	(-6.98)	-	-	(-6.98)	-	-	500.00 (300.00)	(-6.98)	493.02	(-6.98)	-
12.	Jharkhand State Food and Civil Supplies Corporation Limited	\$\$	-	-	-	-	-	-	-	-	-	-	-	-
13.	Jharkhand State Minorities Finance Development Corporation	\$\$	-	-	-	-	-	-	-	-	-	-	-	-
<b>Sector wise total</b>				<b>8.63</b>	<b>-</b>	<b>4.19</b>	<b>4.44</b>	<b>103.38</b>	<b>1.47</b>	<b>550.00 (300.00)</b>	<b>37.32</b>	<b>587.32</b>	<b>4.44</b>	<b>0.76</b>
<b>Total A (All sector wise working Government)</b>				<b>7884.73</b>	<b>10053.56</b>	<b>9388.04</b>	<b>(-11556.86)</b>	<b>33481.25</b>	<b>24.05</b>	<b>14005.00 (1500.00)</b>	<b>(-14778.34)</b>	<b>172372.77</b>	<b>(-1503.30)</b>	<b>-</b>

*Audit Report on Public Sector Undertakings for the year ended 31 March 2013*

Sl. No.	Sector & Name of the Company	Period of Accounts	Year in which finalised	Net Profit (+)/ Loss (-)		Turnover	Impact of Accounts Comments <sup>§</sup>	Paid up Capital	Accumulated Profit (+)/ Loss (-)	Capital employed <sup>@</sup>	Return on capital employed <sup>§</sup>	Percentage return on capital employed (12)
				Net Profit/ Interest	Depreciation							
(1)	(2)	(3)	(4)	5 (a)	5 (c)	(6)	(7)	(8)	(9)	(10)	(11)	(12)
<b>B. Working Statutory Corporations</b>												
<b>Power</b>												
1.	Jharkhand State Electricity Board	2011-12	2013-14	(-)259417.34	11736.75	222904.99	2743.00	-	(-)929014.77	81166.54	(-)271154.09	-
<b>Sector wise total</b>				(-)259417.34	11736.75	222904.99	2743.00	-	(-)929014.77	81166.54	(-)271154.09	-
<b>Total B (All sector wise working Statutory corporations)</b>				(-)259417.34	11736.75	222904.99	2743.00	-	(-)929014.77	81166.54	(-)271154.09	-
<b>Grand Total (A + B)</b>				(-)251532.61	21124.79	256386.24	2767.05	14005.00 (1500.00)	(-)943793.11	253539.31	(-)272657.39	-

**Note: There is no non-working Government Company/Statutory Corporation in the State of Jharkhand.**

# Impact of accounts comments include the net impact of comments of Statutory Auditors and CAG and is denoted by (+) increase in profit/ decrease in losses and (-) decrease in profit/ increase in losses.

@ Capital employed represents Shareholders Fund plus Long Term Borrowings as per requirement of schedule VI of the Companies Act, 1956. In case of JSEB capital employed represents net fixed assets + capital expenditure in progress + working capital as schedule VI is not applicable to JSEB.

§ Return on capital employed has been worked out by adding profit and interest charged to profit and loss account.

§§ The company has not submitted first accounts so far.

1 Supplementary audit of accounts of TVNL (1998-99 & 1999-2000), JSMDC (2008-09) and GRDA (2008-09 to 2011-12) was in progress.

**Annexure – 1.4**  
**Statement showing financial position of Jharkhand State Electricity Board**  
*(Referred to in paragraph 1.15)*

(Amount: ₹ in crore)

Particulars	2009-10	2010-11	2011-12
<b>A. Assets</b>			
Gross Block	1982.01	2351.60	2500.79
Less: Depreciation	1064.55	1115.61	1232.97
Net Fixed Assets	917.46	1235.99	1267.82
Capital Expenditure in progress	1815.03	1813.99	1752.26
Assets not in use	2.29	2.29	2.29
Investment	162.10	200.27	179.07
Total Current Assets	4013.19	4740.45	5450.15
Deficit	5356.29	6079.12	9290.15
<b>Total A</b>	<b>12266.36</b>	<b>14072.11</b>	<b>17941.74</b>
<b>B. Liabilities</b>			
Borrowings for working Capital	73.92	218.98	274.93
Payment due on capital liabilities	3745.38	4481.13	5383.28
Capital liabilities	264.39	210.10	205.58
Funds from State Government	3005.93	2958.65	2743.16
Contributions, Grants and Subsidies	1494.91	1570.38	1676.22
Total Current liabilities	3681.83	4632.87	7658.57
<b>Total B</b>	<b>12266.36</b>	<b>14072.11</b>	<b>17941.74</b>
<b>C. Capital Employed*</b>	<b>3063.85</b>	<b>3157.56</b>	<b>811.66</b>

\* Capital employed represents net fixed assets (including Capital Expenditure-in-Progress) plus working capital.



**Annexure – 1.5**  
**Statement of working results of Jharkhand State Electricity Board**  
*(Referred to in paragraph 1.15)*

(Amount: ₹ in crore)

Sl. No.	Particulars	2009-10	2010-11	2011-12
1.	a. Revenue Receipts	1634.37	2010.69	2229.05
	b. Revenue Subsidies and Grants, Other income	701.44	652.85	961.23
	c. Total	2335.81	2663.54	3190.28
2.	Revenue expenditure (net of expenses capitalised including write off of intangible assets but excluding depreciation and interest)*	2385.22	3036.58	3531.75
3.	Gross surplus (+)/ deficit (-) for the year (Dr.)	(-) 49.41	(-) 373.04	(-) 341.47
4.	Adjustment relating to previous year (Dr.)	(-) 147.44	97.26	(-) 2252.70
5.	Final gross surplus (+)/deficit (-) for the year (3+4)	(-) 196.85	(-) 275.78	(-) 2594.17
6.	Appropriation			
	A) Depreciation	49.79	50.99	117.37
	B) Interest on Capital / Loans	609.75	554.67	622.13
	C) Interest on the other Loans, Advances etc.	-	-	-
	D) Total Interest on Loans (B+C)	609.75	554.67	622.13
	E) Less Interest Capitalised	149.82	158.61	122.64
	F) Net Interest charged to revenue (D-E)	459.93	396.06	499.49
7.	Surplus (+) Deficit (-) before account of subsidy from State Government {5-6A-6F-1b (grant only)}	(-) 1106.57	(-) 1172.83	(-) 3961.03
8.	Net surplus (+) Deficit (-) (5-6A-6F)	(-) 706.57	(-) 722.83	(-) 3211.03
9.	Total return on capital employed** (8+6F)	(-) 246.64	(-) 326.76	(-) 2711.54
10.	Percentage of return on capital employed***	-	-	-

**NOTES:** \* Revenue expenditure does not include depreciation and interest on the loans

\*\* Total return on capital employed represents net surplus/deficit plus total interest charged to profit and loss account (less interest on capital)

\*\*\* Percentage of return on Capital Employed not calculated as there was deficit in all the year.

**Annexure – 1.6**  
**Statement showing investments made by State Government in PSUs whose accounts are in arrears**

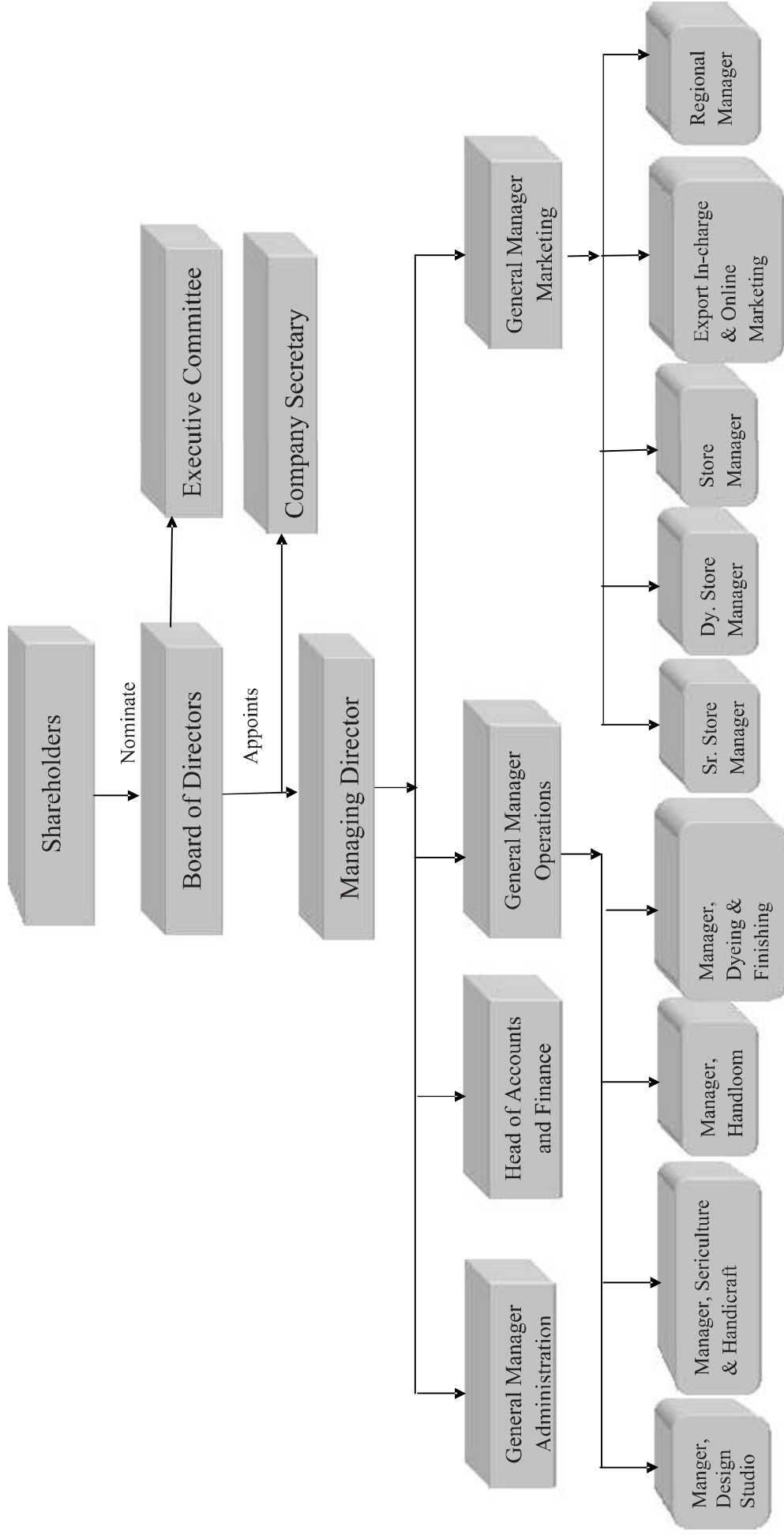
*(Referred to in paragraph 1.21)*

*(₹ in lakh)*

Sl No.	Name of PSU	Year upto which accounts finalised	Paid up capital as per latest finalised accounts	Period during which accounts are in arrears	Investment made by State Government during the years for which accounts are in arrears			
					Equity	Loan	Grant	Others
<b>Working Companies/Corporations</b>								
<b>A. Government companies</b>								
1.	Jharkhand Hill Area Lift Irrigation Corporation Limited	2009-10	500.00	2010-11	-	-	-	-
				2011-12	-	-	-	-
				2012-13	-	-	542.00	-
2.	Jharkhand Tourism Development Corporation Limited	2004-05	50.00	2005-06	25.00	-	-	-
				2006-07	-	-	-	-
				2007-08	-	-	-	-
				2008-09	-	-	-	-
				2009-10	25.00	-	-	-
				2010-11	50.00	-	-	-
				2011-12	100.00	-	-	-
				2012-13	50.00	-	-	-
3.	Greater Ranchi Development Agency Limited	2011-12	1100.00 (1050.00)	2012-13	1400.00	-	-	-
4.	Tenughat Vidyut Nigam Limited	1999-2000	10000.00	2000-01	-	-	-	-
				2001-02	-	1500.00	-	-
				2002-03	-	1500.00	-	-
				2003-04	-	-	-	-
				2004-05	-	500.00	-	-
				2005-06	500.00	1400.00	-	-
				2006-07	-	800.00	-	-
				2007-08 to 2012-13	-	-	-	-
5.	Jharkhand Silk Textile and Handicraft Development Corporation Limited	2011-12	950.00 (150.00)	2012-13	50.00	-	-	-
6.	Jharkhand State Beverages Corporation Limited	2011-12	500.00 (300.00)	2012-13	-	2000.00	-	-
7.	Jharkhand State Food and Civil Supplies Corporation Limited	-	-	2010-11	500.00	-	9400.00	-
				2011-12	-	4396.00	20000.00	-
				2012-13	-	-	7500.00	-
<b>Total (A)</b>			<b>13100.00 (1500.00)</b>		<b>2700.00</b>	<b>12096.00</b>	<b>37442.00</b>	<b>-</b>
<b>B Statutory corporation</b>								
1.	Jharkhand State Electricity Board	2011-12	-	2012-13	-	54170.00	110725.00	-
<b>Total(B)</b>					<b>-</b>	<b>54170.00</b>	<b>148167.00</b>	<b>-</b>
<b>Total (A)+(B)</b>			<b>13100.00 (1500.00)</b>		<b>2700.00</b>	<b>66266.00</b>	<b>148167.00</b>	<b>-</b>

Source: Data furnished by Government companies/Statutory corporation.  
The figures appearing in brackets represent Share Application Money.

**Annexure – 2.1**  
**Organisation Structure of Jharcraft**  
*(Referred to in paragraph 2.2)*



## Annexure – 2.2

## Statement showing the details of Cocoons produced during 2008-09 to 2011-12

(Referred to in paragraph 2.10)

(Numbers in lakh)

Sl. No.	Particulars	2008-09	2009-10	2010-11	2011-12	Total
1.	Cocoon preserved for production of basic DFLs	28.50	47.80	73.54	139.34	289.18
2.	Basic DFL produced	4.07	4.45	9.08	9.82	27.42
3.	Basic DFL to be produced	5.42	9.08	13.97	26.47	54.94
4.	Basic DFL purchased	3.04	1.51	2.78	7.05	14.38
5.	Total basic DFL available (2+4)	7.11	5.96	11.86	16.87	41.80
6.	Total basic DFL to be available (3+4)	8.46	10.59	16.75	33.52	69.32
7.	Commercial DFL produced	44.00	21.64	69.69	143.49	278.82
8.	Commercial DFL to be produced (6*40/5)	67.64	84.74	134.02	268.20	554.60
9.	Commercial DFL of local species produced (Iaria, modia etc.)	0.94	0.53	1.41	2.14	5.02
10.	Total commercial DFL available (7+9)	44.94	22.17	71.10	145.63	284.54
11.	Total commercial DFL to be available (8+9)	68.58	85.27	135.43	270.34	560.02
12.	Commercial cocoon produced	1855.31	1910.92	2266.52	8016.02	14048.77
13.	Commercial cocoon to be produced (11*40)	2743.20	3410.64	5417.23	10813.47	22384.54
14.	Cocoon short produced (13-12)	887.89	1499.72	3150.71	2797.45	8335.77
15.	Short fall in production (In %) (14/13*100)	32.37	43.97	58.16	25.87	37.24
16.	Average cost <sup>1</sup> (₹)	0.95	1.05	0.96	1.07	-
17.	Potential loss (₹ in crore)	8.43	15.75	30.25	29.93	84.36

*(Source: Data furnished by the Department)**Note: Information relating to the year 2012-13 was not made available by the Department*

<sup>1</sup> Rate prevailing at Kharsawan in 2008-09 = ₹ (1.25+0.64)/2= ₹ 0.95, 2009-10= ₹ (1.37+0.73)/2= ₹ 1.05, 2010-11= ₹ (1.25+0.66)/2= ₹ 0.96 and 2011-12= ₹ (1.50+0.63)/2= ₹ 1.07

**Annexure-2.3**

**Statement showing the details of sanctioned amount, targets and achievements in respect of cluster development scheme**  
*((Referred to in paragraph 2.17))*

Date of sanction	No. of clusters	Sanctioned Amount (₹ in lakh)	Target (In Nos)					Achievement (In Nos)				
			CFC shed	Dye house	Weaving training	Dye training	Design training	CFC shed	Dye house	Weaving training	Dye training	Design training
February 2008	10	541.35	10	10	200	200	200	Nil	Nil	200	200	120
October 2008	11	635.25	11	11	220	220	220	Nil	Nil	220	220	160
November 2009	5	283.50	5	Nil	100	100	100	Nil	Nil	60	100	Nil
December 2010	5	283.50	5	Nil	100	100	100	Nil	Nil	40	Nil	Nil
February 2011	4	226.80	4	Nil	80	80	80	Nil	Nil	40	Nil	Nil
<b>Total</b>	<b>35</b>	<b>1970.40</b>	<b>35</b>	<b>21</b>	<b>700</b>	<b>700</b>	<b>700</b>	<b>Nil</b>	<b>Nil</b>	<b>560</b>	<b>520</b>	<b>280</b>

*(Source: Data compiled from scheme and information furnished by the Company)*

## Annexure-2.4

## Statement showing the details of sanctioned amount, targets and achievements in respect of group approach scheme

*(Referred to in paragraph 2.18)*

Date of sanction	No. of Groups sanctioned	Sanctioned amount (₹ in crore)	Target (In Nos)			Achievement (In Nos)		
			Construction of Workshed	Training		Construction of Workshed	Training	
				Weaving	Dyeing		Weaving	Dyeing
October 2008	11	0.66	07	80	140	06	60	120
February 2009	12	0.70	07	100	120	06	80	100
November 2009	19	1.13	19	Nil	Nil	15	Nil	Nil
February 2011	48	2.86	48	Nil	Nil	35	Nil	Nil
<b>Total</b>	<b>90</b>	<b>5.35</b>	<b>81</b>	<b>180</b>	<b>260</b>	<b>62</b>	<b>140</b>	<b>220</b>

*(Source: Data compiled from scheme and information furnished by the Company)*

**Annexure-2.5**

**Statement showing the details of sanctioned amount, targets and achievements in respect of PWCS scheme**

*(Referred to in paragraph 2.19)*

Year	Sanctioned amount (₹ in crore)	Target (In Nos)		Achievement (In Nos)	
		Number of Worksheds to be Constructed	Weavers to be trained	Number of Worksheds Constructed	Weavers trained
2008-09	3.00	14	Nil	Nil	Nil
2009-10	4.00	23	460	7	288
2010-11	8.10	40	600	16	928
2011-12	8.70	100	2000	7	866
2012-13	7.32	59	1180	Nil	1542
<b>Total</b>	<b>31.12</b>	<b>236</b>	<b>4240</b>	<b>30</b>	<b>3624</b>

*(Source: Data compiled from scheme and information furnished by the Company)*

**Annexure- 3.1****Statement showing the amount paid for extra quantity of kendu leaves collected over notified yield***(Referred to in paragraph 3.1.3)*

Season	No. of lots	Notified yield (Std bag)	Total collection (Std bag)	Excess collection (Std bag) (D-C)	Sale price of excess quantity at full value (₹)	Sale price at 50 per cent of F (₹)	Percentage of excess collection over notified yield (E/CX100)
(A)	(B)	(C)	(D)	(E)	(F)	(G)	(H)
2008	85	232375	288440	56065	15092754	7546377	24.13
2009	86	228200	290296	62096	20085336	10042668	27.21
2010	90	211075	270629	59554	25013258	12506629	28.21
2011	24	45650	50739	5089	4334934	2167467	11.15
2012	122	338025	459507	121482	86474136	43237068	35.94
<b>Total</b>	<b>407</b>	<b>1055325</b>	<b>1359611</b>	<b>304286</b>	<b>151000418</b>	<b>75500209</b>	<b>28.83</b>

*(Source: Data furnished by the company)*



**Annexure - 3.2**

**Statement showing paragraphs/Reviews for which replies were not received**  
(Referred to in paragraph-3.6.1)

Sl. No.	Name of Department	2007-08		2008-09		2009-10		2010-11		2011-12	
		No. of paras in Audit Report	No. of paras for which replies were not received	No. of paras in Audit Report	No. of paras for which replies were not received	No. of paras in Audit Report	No. of paras for which replies were not received	No. of paras in Audit Report	No. of paras for which replies were not received	No. of paras in Audit Report	No. of paras for which replies were not received
1.	Energy	7	7	4	4	6	6	2	2	3	3
2.	Forest & Environment	-	-	1	1	-	-	-	-	1	1
3.	Home	1	1	-	-	1	1	1	1	1	1
4.	Mines & Geology	1	-	-	-	-	-	1	1	-	-
5.	Water Resources, Industry, Energy, Home, Tourism, Forest & Environment, Urban Development, and Mines & Geology	-	-	-	-	-	-	-	-	1	1
	<b>Total</b>	<b>9</b>	<b>8</b>	<b>5</b>	<b>5</b>	<b>7</b>	<b>7</b>	<b>4</b>	<b>4</b>	<b>6</b>	<b>6</b>

**Annexure – 3.3**  
**Statement of department wise outstanding Inspection Reports (IRs)**

*(Referred to in paragraph-3.6.3)*

Sl. No.	Name of Department	No. of PSUs	No. of outstanding IRs	No. of outstanding paragraphs	Year from which paragraphs outstanding
1.	Energy	2	309	1221	2005-06
2.	Forest & Environment	1	26	94	2006-07
3.	Mines and Geology	1	4	18	2010-11
4.	Tourism	1	13	59	2007-08
5.	Industry	2	4	6	2008-09
6.	Home	1	12	55	2006-07
7.	Water Resources	1	16	45	2006-07
8.	Urban Development	1	2	12	2009-10
<b>Total</b>		<b>10</b>	<b>386</b>	<b>1510</b>	

**Annexure – 3.4**

**Statement of department wise draft paragraphs replies to which were awaited**

*(Referred to in paragraph-3.6.3)*

<b>Sl. No.</b>	<b>Name of Department</b>	<b>No. of draft paragraphs</b>	<b>Period of issue</b>
1.	Energy	4	June/July 2013
2.	Forest & Environment	1	August 2013
	<b>Total</b>	<b>5</b>	