

## APPENDIX – I

## Statement showing status of devolution of functions to Panchayati Raj Institutions

(Reference : Paragraph 1.4; Page 3)

Sr. No.	Functions as per 11 <sup>th</sup> Schedule of the Constitution	Status
1.	Agriculture, including Agriculture Extension	Fully devolved
2.	Minor Irrigation	Fully devolved
3.	Animal husbandry	Fully devolved
4.	Rural Housing	Fully devolved
5.	Drinking water – water distribution	Fully devolved
6.	Roads, culverts, bridges, ferries, waterways	Fully devolved
7.	Fuel (Energy) and fodder	Fully devolved
8.	Minor forest projects	Fully devolved
9.	Poverty alleviation programmes	Fully devolved
10.	Fair and markets	Fully devolved
11.	Health and sanitation, including PHCs dispensaries	Fully devolved
12.	Family welfare	Fully devolved
13.	Women and child development	Fully devolved
14.	Welfare of weaker sections particularly of the SCs and STs	Fully devolved
15.	Primary and Secondary Education	Partially devolved
16.	Adult and non-formal education	Partially devolved
17.	Cultural activities	Partially devolved
18.	Social welfare, including welfare of handicapped and mentally retarded	Partially devolved
19.	Maintenance of community assets	Partially devolved
20.	Land improvement, implementation of land reforms	Yet to be devolved
21.	Fisheries	Yet to be devolved
22.	Social forestry and farm forestry	Yet to be devolved
23.	Small scale industry	Yet to be devolved
24.	Khadi, village and cottage industries	Yet to be devolved
25.	Rural electrification including distribution of electricity	Yet to be devolved
26.	Non-conventional source of energy	Yet to be devolved
27.	Technical training and vocational education	Yet to be devolved
28.	Libraries	Yet to be devolved
29.	Public distribution system	Yet to be devolved

**APPENDIX - II**

**Details of grant received and expenditure incurred under IAY scheme in the test checked Districts during the period 2008-09 to 2012-13**

(Reference : Paragraph 2.1.6.2; Page 18)

(₹ in crore)

Name of District	Year	Opening Balance <sup>1</sup>	Grant Released		Miscellaneous income with interest	Total Available Fund	Expenditure	Closing Balance	Percentage of expenditure against available fund
			Central	State					
Anand	2008-09	5.67	9.08	1.57	0.49	16.81	14.16	2.65	84
	2009-10	2.64	23.04	7.68	3.48	36.84	25.05	11.79	68
	2010-11	11.78	47.05	15.68	3.22	77.73	53.05	24.68	68
	2011-12	24.68	5.97	1.00	1.56	33.21	20.34	12.87	61
	2012-13	12.88	8.86	2.95	0	24.69	6.34	18.35	26
Banaskantha	2008-09	6.07	23.09	4.99	0.22	34.37	23.48	10.89	68
	2009-10	10.89	25.28	12.42	0.83	49.42	33.28	16.14	67
	2010-11	16.14	52.35	17.38	0.87	86.74	49.20	37.54	57
	2011-12	37.53	29.55	4.99	2.91	74.98	40.85	34.13	54
	2012-13	34.14	13.97	9.58	0.01	57.70	41.12	16.58	71
Dahod	2008-09	2.30	21.37	4.12	0.26	28.05	12.35	15.70	44
	2009-10	15.70	25.00	9.92	0.65	51.27	26.35	24.92	51
	2010-11	24.94	39.22	10.07	3.88	78.11	38.74	39.37	50
	2011-12	39.37	122.45	44.17	3.37	209.36	99.53	109.83	48
	2012-13	110.10	40.59	15.25	0.52	166.46	120.70	45.76	73
Junagadh	2008-09	4.84	18.50	3.32	0.66	27.32	14.73	12.59	54
	2009-10	12.59	11.03	5.65	5.00	34.27	23.5	10.77	69
	2010-11	10.77	0	0	0.83	11.60	6.73	4.87	58
	2011-12	4.87	3.46	1.15	0.28	9.76	3.49	6.27	36
	2012-13	6.26	0	0	0.25	6.51	3.62	2.89	56
Porbandar	2008-09	0.27	2.32	0.52	0.02	3.13	2.10	1.03	67
	2009-10	1.03	2.61	0.83	0.16	4.63	2.51	2.12	54
	2010-11	2.11	1.28	0.70	0.46	4.55	4.26	0.29	94
	2011-12	0.30	0.81	0.30	0.24	1.65	0.79	0.86	48
	2012-13	0.85	1.39	0.47	0.06	2.77	1.55	1.22	56
Surat	2008-09	2.46	38.88	8.92	0.42	50.68	45.46	5.22	90
	2009-10	5.22	46.40	18.65	0.40	70.67	56.93	13.74	81
	2010-11	8.50	40.29	14.29	1.21	64.29	29.87	34.42	46
	2011-12	34.42	3.01	1.00	1.96	40.39	11.13	29.26	28
	2012-13	29.27	0	0	1.24	30.51	0	30.51	0
Surendranagar	2008-09	1.76	9.09	2.05	0.21	13.11	9.59	3.52	73
	2009-10	3.52	13.55	5.36	0.43	22.86	15.91	6.95	70
	2010-11	6.95	13.30	4.72	2.58	27.55	20.57	6.98	75
	2011-12	6.98	7.16	2.04	0.41	16.59	12.66	3.93	76
	2012-13	3.93	7.23	3.54	0.43	15.13	6.38	8.75	42
Vadodara	2008-09	3.64	32.19	7.13	0.34	43.30	28.78	14.52	66
	2009-10	14.51	38.95	16.58	0.81	70.85	52.60	18.25	74
	2010-11	18.26	49.65	16.55	1.28	85.74	67.09	18.65	78
	2011-12	18.65	48.76	8.13	1.71	77.25	53.98	23.27	70
	2012-13	23.27	23.50	15.96	1.32	64.05	20.24	43.81	32

(Source : Information furnished by CRD)

<sup>1</sup> The opening balance does not tally with the closing balance of the previous year. These figures were provided by the test checked DRDAs. Clarifications sought for the difference is awaited from the CRD and test checked DRDAs (March 2014)

**APPENDIX-III**  
**Non-release of allocated fund by GoI**  
**(Reference : Paragraph 2.1.6.2; Page 18)**

(₹ in crore)

District	Year	Non- release of grant by GoI due to			Total Grant not released
		Excess carry over	Late submission of proposal for second instalment	Non-submission of proposal for second instalment	
Dahod	2008-09	0.70	Nil	Nil	0.70
	2012-13	66.87	12.43	Nil	79.30
	<b>Total</b>				<b>80.00</b>
Banaskantha	2008-09	3.21	Nil	Nil	3.21
	2009-10	6.46	Nil	Nil	6.46
	<b>Total</b>				<b>9.67</b>
Junagadh	2008-09	2.57	Nil	Nil	2.57
	2011-12	Nil	Nil	3.46	3.46
	<b>Total</b>				<b>6.03</b>
Porbandar	2008-09	0.21	Nil	Nil	0.21
	<b>Total</b>				<b>0.21</b>
Surendranagar	2008-09	1.62	Nil	Nil	1.62
	2010-11	3.50	Nil	Nil	3.50
	<b>Total</b>				<b>5.12</b>
Vadodara	2008-09	1.54	Nil	Nil	1.54
	2010-11	10.26	Nil	Nil	10.26
	<b>Total</b>				<b>11.80</b>
<b>Grand Total</b>					<b>112.83</b>

(Source : Information compiled from Grant release orders)

**APPENDIX – IV**

**Contingent/office expense booked under the scheme**

**(Reference : Paragraph 2.1.6.3; Page 19)**

**(Amount in ₹ )**

<b>Sr. No.</b>	<b>Name of Taluka/DRDA</b>	<b>Amount</b>
1	Dantivada ( Banaskantha)	62,824
2	Deesa ( Banaskantha)	1,50,888
3	Limkheda (Dahod)	1,85,687
4	Jalod (Dahod)	14,96,893
5	DRDA Surendranagar	3,18,451
6	Chotila (Surendranagar)	19,567
7	Sayla (Surendranagar)	66,121
8	Karjan (Vadodara)	1,00,000
<b>Total</b>		<b>24,00,431</b>

**(Source: Information compiled from the Cash Book of test checked Talukas and DRDA)**

## APPENDIX - V

## Payment of assistance to beneficiaries by cheque

(Reference : Paragraph 2.1.7.3; Page 21)

(₹ in crore)

Name of the Taluka	Name of the District	Period of payment	Number of beneficiaries to whom assistance was paid by cheque	Amount of Assistance paid
Anand	Anand	2008-09 to 2012-13	3,184	12.59
Tarapur	Anand	2008-09 to 2012-13	2,671	2.78
Palanpur	Banaskantha	2008-09 to 2012-13	5,822	5.72
Jalod	Dahod	2009-10 to 2011-12	2,627	2.17
Limkheda	Dahod	2008-09 to 2012-13	4,759	4.13
Junagadh	Junagadh	2008-09 to 2012-13	565	0.61
Keshod	Junagadh	2008-09 to 2012-13	435	0.49
Kutiyana	Porbandar	2008-09 to 2012-13	460	0.47
Chotila	Surendranagar	2008-09 to 2012-13	3,187	2.32
Sayla	Surendranagar	2008-09 to 2012-13	7,200	3.03
Sankheda	Vadodara	2008-09 to 2011-12	56	0.07
		<b>Total</b>	<b>30,966</b>	<b>34.38</b>

(Source : Information compiled from the data book and cash book of test checked Talukas)

**APPENDIX - VI**

**Physical performance in respect of construction of new houses in the test checked Districts during 2008-13**

(Reference : Paragraph 2.1.8.1; Page 22)

<b>District</b>	<b>Number of new houses to be sanctioned during the year</b>	<b>Houses actually sanctioned during the year</b>	<b>Number of new houses completed as on 31 March of the respective year</b>	<b>Houses under construction</b>
Anand	33,598	33,388	33,846	2,195
Banaskantha	49,050	48,521	42,995	17,531
Dahod	96,777	98,089	67,784	94,146
Junagadh	13,949	10,800	11,817	11,519
Porbandar	2,745	2,266	2,945	4,095
Surat	34,084	30,779	31,388	3,065
Surendranagar	19,119	21,922	16,600	14,771
Vadodara	68,648	73,231	51,105	51,031

(Source : Information compiled from the State Monthly Progress Report)

## APPENDIX – VII

## Details of number of houses not completed as of March 2013

(Reference : Paragraph 2.1.8.1; Page 22)

Taluka	District	Number of houses			Percentage of incomplete houses
		Sanctioned during 2008-11	Completed (up to 31 March 2013)	Incomplete (as on 31 March 2013)	
Anand	Anand	2,903	1,829	1,074	37
Tarapur	Anand	1,513	979	534	35
Deesa	Banaskantha	3,084	1,154	1,930	63
Jalod	Dahod	4,553	933	3,620	80
Limkheda	Dahod	4,093	859	3,234	79
Bhesan	Junagadh	455	427	28	6
Junagadh	Junagadh	322	215	107	33
Keshod	Junagadh	391	363	28	7
Kutiyana	Porbandar	294	179	115	39
Chotila	Surendranagar	3,044	1,708	1,336	44
Sayala	Surendranagar	2,174	1,809	365	17
Dabhoi	Vadodara	3,285	2,182	1,103	34
Karjan	Vadodara	3,661	1,954	1,707	47
Sankheda	Vadodara	5,291	3,750	1,541	29
<b>Total</b>		<b>35,063</b>	<b>18,341</b>	<b>16,722</b>	<b>48</b>

(Source : Information furnished by the test checked Talukas)

**APPENDIX - VIII**

**Details of DLVMC meetings held in test checked Districts**

**(Reference : Paragraph 2.1.12.3; Page 29)**

<b>District</b>	<b>Prescribed number of meetings to be held during 2011-13</b>	<b>Number of meetings held</b>
Anand	8	3
Banaskantha	8	5
Dahod	8	7
Junagadh	8	2
Porbandar	8	3
Surat	8	4
Surendranagar	8	3
Vadodara	8	2

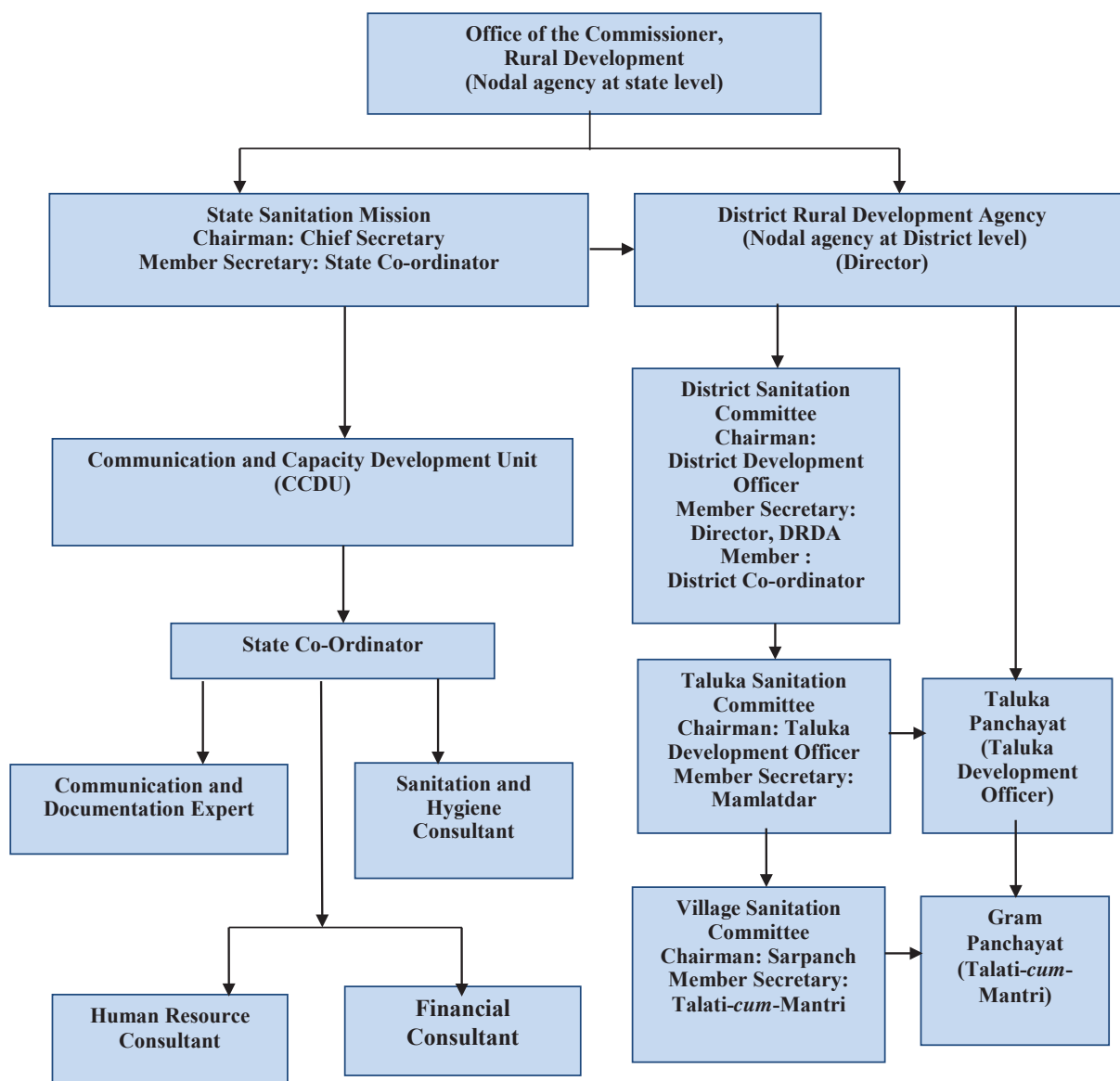
**(Source:- Information furnished by the test checked Districts)**



APPENDIX - IX

Organisational chart

(Reference: Paragraph 2.2.2; Page 34)



**APPENDIX - X**

**List of GPs which had not refunded unspent balance of  
TSC to TLSC as on 31 March 2013**

(Reference : Paragraph 2.2.7.3; Page 38)

District	Taluka	Sr. No	Name of GPs	Unspent Amount (in ₹)
Ahmedabad	Dascroi	1.	Gamdi	1,60,320
		2.	Navapura	7,800
	Ranpur	3.	Aniyali	1,25,875
		4.	Keira	1,50,958
		5.	Gunda	8,345
		6.	Gadhiyadareli	10,750
		7.	Umralla	30,981
		8.	Godhavata	53,020
	Dholka	9.	Vataman	35,693
		10.	Vautha	49,635
Dang	Ahwa	11.	Bheskatri	9,767
Navsari	Vansda	12.	Limberpada	11,208
		13.	Kandha	1,86,250
		14.	Vanarsi	36,000
	Navsari	15.	Amadpore	1,44,860
		16.	Jamalpore	3,26,019
		17.	Itarava	9,000
Jamnagar	Dhrol	18.	Haripar	27,606
		19.	Vankiya	93,610
	Jamnagar	20.	Motavagudad	8,804
		21.	Vibhapar	50,000
		22.	Chandragadh	54,821
	Jodia	23.	Aliya	12,982
		24.	Bhadara	63,456
25.		Rasnal	42,549	
Sabarkantha	Prantij	26.	Ananda	70,084
		27.	Ghadkan	19,175
		28.	Amarapur	10,000
	Bayad	29.	Aminpur	5,000
		30.	Gabat	38,831
		31.	Vajepurakampa	4,000
Panchmahal	Ghoghambha	32.	Chhaubhau	1,11,316
		33.	Ghoghambha	1,11,439
		34.	Kharod	13,000
	Kalol	35.	Paroli	70,573
		36.	Satamna	4,61,500
		37.	Nandarkha	80,498
		38.	Vyasda	71,097
		39.	Chalali	26,686
	Lunawada	40.	Karoli	17,594
		41.	Ucharpi	2,84,748
42.		Thanasavli	2,50,000	
43.		Aagarwada	1,85,000	
		44.	Bhalada	2,15,726
			<b>TOTAL</b>	<b>37,56,576</b>

## APPENDIX - XI

## Target and achievements for construction of school toilets as of March 2013

(Reference : Paragraph 2.2.11.1; Page 47)

(₹ in crore)

Sr. No	Name of District	Approved Cost	Expenditure incurred	Number of school toilets to be constructed	Number of school toilets actually constructed	Percentage of toilets completed
1	Ahmedabad	2.14	2.15	920	920	100
2	Dang	0.68	0.69	216	216	100
3	Jamnagar	5.23	3.41	1,877	1,005	54
4	Panchmahal	8.39	7.69	3,272	3,272	100
5	Porbandar	2.23	1.44	715	462	65
6	Navsari	3.83	2.06	1,347	1,347	100
7	Sabarkantha	9.70	9.50	3,611	3,577	99
<b>Total</b>		<b>32.20</b>	<b>26.94</b>	<b>11,958</b>	<b>10,799</b>	<b>90</b>
<b>State</b>		<b>102.07</b>	<b>90.84</b>	<b>40,439</b>	<b>36,438</b>	<b>90</b>

(Source : Information furnished by CRD)

APPENDIX - XII

The details of ATs constructed and expenditure incurred in test checked Districts and at State level as of March 2013

(Reference : Paragraph 2.2.12; Page 48)

Sr. No.	District	Approved cost (₹ in lakh)	Expenditure (₹ in lakh)	Number of ATs to be constructed	Number of ATs constructed	Percentage of ATs completed
1	Ahmedabad	42.85	23.65	678	473	70
2	Dang	14.90	14.15	290	290	100
3	Jamnagar	96.84	41.75	1,435	678	47
4	Navsari	77.85	55.83	1,369	1,118	82
5	Panchmahal	82.72	67.80	1,578	1,388	88
6	Porbandar	11.55	11.87	178	128	72
7	Sabarkantha	82.82	82.64	1,304	1,304	100
	<b>Total</b>	<b>409.53</b>	<b>297.69</b>	<b>6,832</b>	<b>5,379</b>	<b>79</b>
	<b>State</b>	<b>1,801.39</b>	<b>1,253.71</b>	<b>30,516</b>	<b>25,422</b>	<b>83</b>

(Source : Information furnished by test checked DRDAs and CRD)

## APPENDIX - XIII

The details of CSCs constructed and expenditure incurred in test checked Districts and at State level as of March 2013

(Reference : Paragraph 2.2.13; Page 49)

Sr. No.	District	Approved cost (₹ in crore)	Expenditure (₹ in crore)	Number of CSCs to be constructed	Number of CSCs con- structed	Percentage of CSCs completed
1	Ahmedabad	0.70	0.32	35	26	74
2	Dang	0.31	0.26	40	40	100
3	Jamnagar	2.04	0.65	150	75	50
4	Navsari	0.45	0.66	45	52	116
5	Panchmahal	0.37	0.50	61	91	149
6	Porbandar	1.28	0.22	64	64	100
7	Sabarkantha	0.30	0.35	63	31	49
<b>Total</b>		<b>5.45</b>	<b>2.96</b>	<b>458</b>	<b>379</b>	<b>83</b>
<b>State</b>		<b>19.41</b>	<b>17.45</b>	<b>1,671</b>	<b>1,774</b>	<b>106</b>

(Source : Information furnished by CRD)

**APPENDIX - XIV**

**The details of expenditure on solid and liquid waste management as of March 2013**

**(Reference : Paragraph 2.2.14; Page 51)**

**(₹ in crore)**

Name of DSCs	Approved cost	Expenditure incurred			Percentage of expenditure to approved cost
		Solid Waste	Liquid Waste	Total	
Ahmedabad	1.77	0	0.47	0.47	27
Dang	0.64	0	0	0	0
Jamnagar	1.23	1.08	0.01	1.09	89
Navsari	1.13	0.32	0	0.32	28
Panchmahal	3.40	0.91	1.04	1.95	57
Porbandar	0.44	0	0	0	0
Sabarkantha	1.68	0.85	0.61	1.46	87
<b>Total</b>	<b>10.29</b>	<b>3.16</b>	<b>2.13</b>	<b>5.29</b>	<b>51</b>
<b>State</b>	<b>43.10</b>			<b>24.54</b>	<b>57</b>

**(Source: Information furnished by test checked DRDAs and CRD)**

## APPENDIX - XV

The details of availability of TCM and Cluster Co-ordinators as of  
March 2013

(Reference: Paragraph 2.2.15; Page 52)

District	Number of GPs	TCM availability			Cluster Co-ordinators availability		
		Number of TCM required	Number of TCM available	Percentage	Number of Cluster Co-ordinators required	Number of Cluster Co-ordinators available	Percentage
Ahmedabad	565	565	293	52	20	14	70
Dang	70	70	36	51	07	05	71
Jamnagar	679	679	368	54	34	18	53
Navsari	366	366	180	49	13	09	69
Panchmahal	677	677	346	51	29	23	79
Porbandar	151	151	57	38	07	07	100
Sabarkantha	725	725	424	58	30	17	57
<b>Total</b>	<b>3,233</b>	<b>3,233</b>	<b>1,704</b>	<b>53</b>	<b>140</b>	<b>93</b>	<b>66</b>

(Source : Information furnished by test checked DRDAs)

**APPENDIX - XVI**

**The details of Target and Achievement of number of Training Programmes as of March 2013**

(Reference : Paragraph 2.2.15; Page 52)

District	2010-11		2011-12		2012-13		Total		Percentage of achievement
	Target	Achievement	Target	Achievement	Target	Achievement	Target	Achievement	
Ahmedabad	00	00	22	02	80	08	102	10	10
Dang	00	00	00	00	74	02	74	02	03
Jamnagar	01	01	19	00	19	00	39	01	03
Navsari	00	00	16	00	17	00	33	00	00
Panchmahal	22	22	48	24	01	01	71	47	66
Porbandar	10	07	27	00	30	00	67	07	10
Sabarkantha	03	03	01	01	23	14	27	18	67
<b>Total</b>	<b>36</b>	<b>33</b>	<b>133</b>	<b>27</b>	<b>244</b>	<b>25</b>	<b>413</b>	<b>85</b>	<b>21</b>

(Source : Information furnished by test checked DRDAs)



**APPENDIX - XVII**  
**Schools without all-weather building**  
**(Reference: Paragraph 2.3.3.1; Page 59)**

Sl. No.	Name of School	Village	Block	District	Cat-egory	Year Es- tablished
1	Baliyadev PS	Gatrad	Dascroi	Ahmadabad	UPS	2004
2	Branch -1 PS (Girls)	Borsad	Borsad	Anand	UPS	1958
3	Udeshi Goliya PS	Vadgamda	Tharad	Banaskantha	PS	2006
4	Shree Mavaji Goliya PS	Bhordu	Tharad	Banaskantha	PS	2007
5	Nakalang PS	Bhachar	Tharad	Banaskantha	PS	2009
6	Rambhai PS	Idhata	Tharad	Banaskantha	PS	2009
7	Hakamaji Goliya PS	Naroli	Tharad	Banaskantha	PS	2012
8	Dhedhiyonesh PS	Modpar	Bhanvad	Jamnagar	PS	2010
9	Sarkari Madhyamik Shala Hamusar	Hamusar	Dwarka	Jamnagar	UPS	2011
10	Govana Vadi Shala-4	Govana	Lalpur	Jamnagar	PS	2011
11	Juna Galodar Sim Shala	Juna Galodar	Malia Hatina	Junagadh	PS	1998
12	Hadala Nes PS	Hadala Nesh	Una	Junagadh	PS	2000
13	Kerala Sim Shala	Kerala	Malia Hatina	Junagadh	PS	2007
14	Paldi Sim Nes Shala	Paldi	Veraval	Junagadh	PS	2010
15	Sheriyj PS	Sheriyaj	Mangrol	Junagadh	UPS	2010
16	Ukadiya Vadi Vistar Sim PS	Ukadiya	Veraval	Junagadh	PS	2012
17	Sidokar Kanya PS	Sidokar	Veraval	Junagadh	UPS	2012
18	Navjivan PS	Gandhidham	Gandhidham	Kachchh	UPS	2006
19	Shri Viravandh(Ratiya) PS	Ratiya	Bhuj	Kachchh	PS	2007
20	Dedhiya Nana (Dadhar)	Dedhiya	Bhuj	Kachchh	PS	2009
21	Adarji Ni Muvadi PS	Fatiyavad	Kapadvanj	Kheda	PS	2007
22	Madari Nagar (Taiyabpura) PS	Taiyabpura	Kapadvanj	Kheda	PS	2012
23	Rajgadh PS	Raska	Mahemdavad	Kheda	PS	2012
24	Satvirda Nes PS	Satvirda	Ranavav	Porbandar	UPS	1985
25	Ranavana Nes	Adityana	Ranavav	Porbandar	UPS	2005
26	Bhukbara Nes PS	Bhukbara Nes	Ranavav	Porbandar	UPS	2007
27	Boriyavaro Nes PS	Khambhala	Ranavav	Porbandar	PS	2009
28	Bandhno Nes PS	Khambhala	Ranavav	Porbandar	PS	2009
29	Fuljar Nes PS	Adityana	Ranavav	Porbandar	PS	2009
30	Boricha Sim PS	Adityana	Ranavav	Porbandar	PS	2009
31	Fuvara Nes PS	Ranavav	Ranavav	Porbandar	PS	2009
32	Ajamapat Nes PS	Khambhala	Ranavav	Porbandar	PS	2012
33	Ladhadhar Nes PS	Ladhadhar Nesh	Ranavav	Porbandar	PS	2012
34	Gondal Shala No. 4	Gondal	Gondal	Rajkot	UPS	1950
35	Railway Broadgage School	Maliya	Maliya	Rajkot	PS	1986
36	Bhimsar Vanth School	Maliya	Maliya	Rajkot	UPS	2007
37	Rakhodiya Vanth school	Maliya	Maliya	Rajkot	UPS	2007
38	Shree Khara Vanth PS	Maliya	Maliya	Rajkot	UPS	2007
39	Pushkardham PS	Jasdan	Jasdan	Rajkot	PS	2011
40	Sonakuba PS	Modhuka	Jasdan	Rajkot	UPS	2011
41	Limbdi Nagar Palika School-2	Limbdi	Limbdi	Surendranagar	UPS	1918
42	Nava Vadi Vasahat	Nava	Chotila	Surendranagar	PS	2006
43	Dhrangadhra Para Vasa- 16	Dhrangadhra	Dhrangadhra	Surendranagar	PS	2007
44	Kavadiya Sim School	Kavadiya	Halvad	Surendranagar	PS	2009
45	Virendragadh Vadi Vistar	Virendragadh	Dhrangadhra	Surendranagar	PS	2009
46	Piyava PS – 2	Piyava	Chotila	Surendranagar	PS	2011
47	Shree Suryalilapur PS	Garambhadi	Sayla	Surendranagar	PS	2011
48	Nana Harniya Sim School	Nana Harniya	Sayla	Surendranagar	UPS	2011

(Source: Information furnished by GCEE)

APPENDIX - XVIII

Boards and Authorities under the Department<sup>2</sup>

(Reference : Paragraph 3.2.2; Page 73)

Sr. No.	Details of Boards/Authorities	Function
1.	Gujarat Municipal Finance Board	To provide grants and loans for basic and infrastructure facilities through various development schemes for ULBs.
2.	Gujarat Urban Development Mission	Established as State Level Nodal Agency for the purpose of Jawaharlal Nehru National Urban Renewal Mission (JNNURM) and other State sponsored schemes.
3.	Gujarat Urban Development Company Limited	To facilitate urban development by assisting state government and existing agencies in formulation of policy, institutional capacity building and project implementation, and to assist in the funding and implementation of projects. The Company is appointed as Nodal Agency for implementation of Gujarat Urban Development Projects (GUDP) programme, Municipal Solid Waste Management project for the ULBs of the state of Gujarat, Infrastructure Facilities in the Towns identified under Tribal Sub Plan and for implementing the drainage projects under Swarnim Jayanti Mukhya Mantri Shaheri Vikas Yojana (SJMMSVY).
4.	Gujarat Housing Board	The Board constructs houses for Economically Weaker Section (EWS), Lower Income Group (LIG), Middle Income Group (MIG) and Higher Income Group (HIG).
5.	12 Urban Development Authorities <sup>3</sup> (UDA) and 13 Area Development Authorities <sup>4</sup> (ADA)	Preparation and execution of town planning schemes, acquire, hold, manage and dispose of property, executive works in connection with supply of water, disposal of sewerage and provision of other services and amenities, <i>etc.</i>

<sup>2</sup> Urban Development and Urban Housing Department

<sup>3</sup> Ahmedabad, Anand-Karamsad-Vallabhvidyanagar, Bharuch-Ankleshwar, Gandhinagar, Gujarat International Finance Tec-City, Himatnagar, Junagadh, Morbi-Wankaner, Rajkot, Surat, Surendranagar-Wadhwan and Vadodara,

<sup>4</sup> Alang, Ambaji, Anjar, Bavla, Bhachau, Bhavnagar, Bhuj, Dhandhuka, Jamnagar, Khambhaliya, Rapar, Shamlaji and Vadinar

## APPENDIX - XIX

## Details of Audit Coverage

(Reference: Paragraph 4.1.5; Page 86)

Sr. No.	District	Nagarपालikas
1	Ahmedabad	Bareja, Barvala, Bavla, Dhandhuka, Dholka, Sanand and Viramgam
2	Amreli	Amreli, Babra, Bagsara, Chalala, Damnagar, Jafrabad, Lathi, Rajula and Savarkundla
3	Banaskantha	Bhabhar, Deesa, Dhanera, Palanpur, Thara and Tharad
4	Surat	Bardoli, Kansad, Mandvi and Tarsadi
5	Surendranagar	Chotila, Dhrangadhra, Halvad, Limbdi, Patadi, Surendranagar, Thangadh and Wadhwan
6	Tapi	Songadh and Vyara
7	Vadodara	Chhotaudepur, Dabhoi, Karjan, Padra and Savali

**APPENDIX-XX**

**Non-availability of Land for VCPs**

**(Reference: Paragraph 4.1.6.6; Page 93)**

Sr No	Name of Nagarpalika	Whether land allotted to GUDC	Whether the allotted land was encroachment free	Remarks /Issues
1	Halvad	Yes	Yes	Land allotted was found not suitable for construction of VCP due to hard rock. A request for allotment of an alternate site is pending with the Collector.
2	Chotila	No	NA	Request for allotment of land is pending with the Collector.
3	Jetpur	Yes	Yes	Recently an alternate site had been allotted and construction of VCP would be taken up.
4	Dhoraji	Yes	Yes	Land allotted was found not suitable for construction of VCP as it was on the upstream of Bhadar dam. A request for allotment of an alternate site is pending with the Collector.
5	Mangrol	Yes	Yes	Land allotted was found not suitable for construction of VCP due to hard rock. A request for allotment of an alternate site is pending with the Collector.
6	Keshod	Yes	Yes	Land allotted was found not suitable for construction of VCP as the site was highly uneven. A request for allotment of an alternate site is pending with the Collector.
7	Kodinar	Yes	Yes	VCP could not be constructed due to public opposition. A request for allotment of an alternate site is pending with the Collector.
8	Shihor	Yes	Yes	Land allotted was found not suitable for construction of VCP due to its distance from the NP. A request for allotment of an alternate site is pending with the Collector.
9	Palitana	Yes	Yes	Land allotted was found not suitable for construction of VCP. Selection of an alternate site by the NP is under process.
10	Botad	Yes	Yes	Land allotted was found not suitable for construction of VCP as the land was in three different parts, insufficient and there was a deep valley on the site. A request for allotment of an alternate site is pending with the Collector.
11	Gandhidham	No	NA	Order pending from Collector for allotment of site.
12	Rajula	Yes	Yes	The construction would be taken up on completion of the work of cleaning of MSW dumped by NP.
13	Ranavav	No	NA	Allotment of land by the Collector is awaited.
14	Chhaya	Yes	Yes	Land allotted was found not suitable for construction of VCP as the land was regularly water logged. A request for allotment of an alternate site is pending with the Collector.
15	Mehsana	Yes	Yes	A request for allotment of an alternate site is pending with the Collector as the local public and air force had objected to the construction of VCP at the allotted site.
16	Bhuj	Yes	Yes	A request for allotment of an alternate site is pending with the Collector as the Airport Authority had objected to the construction of VCP at the allotted site.
17	Sanand	Yes	Yes	Land allotted was found not suitable for construction of VCP as the land was situated on a Deep valley. A request for allotment of an alternate site is pending with the Collector.
18	Dholka	No	NA	Allotment of land by the Collector is awaited.
19	Dhanera	Yes	Yes	Land allotted was found not suitable for construction of VCP. A request for allotment of an alternate site is pending with the Collector.

Sr No	Name of Nagarpalika	Whether land allotted to GUDC	Whether the allotted land was encroachment free	Remarks / Issues
20	Dessa	Yes	Yes	Land allotted was found not suitable for construction of VCP. A request for allotment of an alternate site is pending with the Collector.
21	Lunawada	Yes	Yes	Land allotted was found not suitable for construction of VCP as the land was in hilly area, major leveling work/blasting would be required which would be costly. A request for allotment of an alternate site is pending with the Collector.
22	Santrampur	Yes	No	Site allotted has been encroached and the NP had not taken any action to remove the encroachment.
23	Gandhinagar	Yes	Yes	A request for allotment of an alternate site is pending with the Collector as the local public and air force had objected to the construction of VCP at the allotted site.
24	Mahudha	Yes	Yes	Local people have objected to spare the allotted site for VCP.
25	Nadiad	No	NA	Allocation of site by the NP is pending
26	Vallabh Vidyanagar	No	NA	Allocation of site by the NP is pending
27	Umreth	Yes	Yes	No Objection Certificate from the GPCB and the Director of Land Records is awaited.
28	Borsad	No	NA	Allocation of site by the NP is pending.
29	Petlad	No	NA	Allocation of site by the NP is pending.
30	Chhotaudepur	Yes	No	The local public had encroached the allocated site.
31	Vyara	Yes	No	Local people have objected to spare the allotted site for VCP.
32	Bilimora	Yes	No	Local people have objected to spare the allotted site for VCP.
33	Vijalpor	No	NA	Allocation of site by the NP is pending.
34	Valsad	No	NA	Nagarpalika has its own compost plant.
35	Umargam	No	NA	Allocation of site by the NP is pending.
36	Navsari	Yes	Yes	The land allotted was insufficient. A request for allotment of an alternate site is pending with the Collector.

APPENDIX - XXI

Statement showing the status of compliance of activities under MSW Rules by test checked NPs

(Reference : Paragraph 4.1.6.8; Page 101)

Parameter	1	2	3	4	5	6	7	8	9	10	11	12	13	14
	Bareja	Barvala	Bavala	Dhandhuka	Dholka	Sanand	Virangam	Amreli	Babra	Bagasara	Chalala	Damnagar	Jafrabad	Lathi
Authorization	No	No	No	No	No	No	Yes	No	No	No	No	No	No	No
<b>Collection</b>														
Door to door	Yes	Yes	Yes	Yes	Yes	Yes	Yes	Yes	Yes	Yes	Yes	Yes	Yes	Yes
Slums, hotels	No	No	No	No	No	No	No	No	No	No	No	No	No	No
Slaughter houses	N.A.	N.A.	N.A.	N.A.	N.A.	N.A.	N.A.	N.A.	N.A.	N.A.	N.A.	N.A.	N.A.	N.A.
Bio-med waste	No	Yes	Yes	No	No	Yes	No	No	Yes	No	No	Yes	Yes	Yes
Demolition waste	No	No	No	No	No	No	No	No	No	No	No	No	No	No
Industrial waste	There are total 8 Treatment Stabilisation Disposal Facilities (TSDFs) and 4 Common HW Incinerators in Gujarat for disposal of Industrial Waste and Hazardous wastes. Such wastes are regulated under Hazardous waste (Management and Handling) Rules, 2008. While issuing authorization to any HW generating industrial unit, GPCB ensures that they first become member of the Common HW facilities for disposal of HWs generated by them otherwise they shall have their own captive Hazardous waste facilities.													
Plastic waste	Yes	Yes	Yes	Yes	Yes	Yes	Yes	Yes	Yes	Yes	Yes	Yes	Yes	Yes
Hazardous waste	There are total 8 TSDFs and 4 Common HW Incinerators in Gujarat for disposal of Industrial Waste and Hazardous wastes. Such wastes are regulated under Hazardous waste (Management and Handling) Rules, 2008. While issuing authorization to any HW generating industrial unit, GPCB ensures that they first become member of the Common HW facilities for disposal of HWs generated by them otherwise they shall have their own captive Hazardous waste facilities.													
Segregation facilities	No	No	No	No	No	No	No	No	No	Partially at VCP	No	No	No	Partially at VCP
Storage facilities	Yes	Yes	Yes	Yes	Yes	Yes	Yes	Yes	Yes	Yes	Yes	Yes	Yes	Yes
Transportation facilities	Yes	Yes	Yes	Yes	Yes	Yes	Yes	Yes	Yes	Yes	Yes	Yes	Yes	Yes
Processing facilities	No	No	Yes	Yes	No	No	Yes	No	No	Yes	Yes	No	No	Yes
Disposal facilities	Open dumping	Open dumping	Open dumping	Open dumping	Open dumping	Open dumping	Open dumping	Open dumping	Open dumping	Open dumping	Open dumping	Open dumping	Open dumping	Open dumping
Facilities at the sites	No such facilities in operation													
Pollution prevention	Not done	Not done	Not done	Not done	Not done	Not done	Not done	Not done	Not done	Not done	Not done	Not done	Not done	Not done
Water quality monitoring	Not done	Not done	Not done	Not done	Not done	Not done	Not done	Not done	Not done	Not done	Not done	Not done	Not done	Not done
Plantation at landfill sites	No such facilities in operation													
Closure of landfill sites and post care	NA	NA	NA	NA	NA	NA	NA	NA	NA	NA	NA	NA	NA	NA

Parameter	Rajula	Savarkundla	Bhabhar	Deesa	Dhanera	Palanpur	Thara	Tharad	Bardoli	Kansad	Mandvi	Tarsadi	Chotila	Dhira-gadhra
Authorization	15	16	17	18	19	20	21	22	23	24	25	26	27	28
Collection	No	Yes	No	Yes	Yes	Yes	No	Yes	Yes	No	No	No	No	Yes
Door to door	Yes	Yes	Yes	Yes	Yes	Partially	Yes	Yes	Yes	Yes	Yes	No	Yes	Yes
Slums, hotels	No	No	No	No	No	No	No	No	No	No	No	No	No	No
Slaughter houses	N.A.	N.A.	N.A.	N.A.	N.A.	N.A.	N.A.	N.A.	N.A.	N.A.	N.A.	N.A.	N.A.	N.A.
Bio-med waste	Yes	No	No	No	No	No	No	Yes	No	No	Yes	Yes	No	Yes
Demolition waste	No	No	No	No	No	No	No	No	No	No	No	No	No	No
Industrial waste	There are total 8 TSDFs and 4 Common HW Incinerators in Gujarat and the facilities available for disposal of Industrial Waste/Hazardous wastes. Such wastes are regulated under Hazardous waste (Management and Handling) Rules, 2008. While issuing authorization to any HW generating industrial unit. GPCB ensures that they first become member of the Common HW facilities for disposal of HWs generated by them otherwise they shall have their own captive Hazardous waste facilities.													
Plastic waste	Yes	Yes	Yes	Yes	Yes	Yes	Yes	Yes	Yes	Yes	Yes	Yes	Yes	Yes
Hazardous waste	There are total 8 TSDFs and 4 Common HW Incinerators in Gujarat and the facilities available for disposal of Industrial Waste/Hazardous wastes. Such wastes are regulated under Hazardous waste (Management and Handling) Rules, 2008. While issuing authorization to any HW generating industrial unit. GPCB ensures that they first become member of the Common HW facilities for disposal of HWs generated by them otherwise they shall have their own captive Hazardous waste facilities.													
Segregation facilities	No	No	No	No	No	No	No	Partially	Partially	No	No	No	No	No
Storage facilities	Yes	Yes	Yes	Yes	Yes	Yes	Yes	Yes	Yes	Yes	Yes	Yes	Yes	Yes
Transportation facilities	Yes	Yes	Yes	Yes	Yes	Yes	Yes	Yes	Yes	Yes	Yes	Yes	Yes	Yes
Processing facilities	No	Yes	No	Yes	No	No	No	Yes	Yes	No	No	No	No	Yes
Disposal facilities	Open dumping	Open dumping	Open dumping	Open dumping	Open dumping	Open dumping	Open dumping	Open dumping	Open dumping	Open dumping	Open dumping	Open dumping	Open dumping	Open dumping
Facilities at the sites	No such facilities in operation													
Pollution prevention	Not done	Not done	Not done	Not done	Not done	Not done	Not done	Not done	Not done	Not done	Not done	Not done	Not done	Not done
Water quality monitoring	Not done	Not done	Not done	Not done	Not done	Not done	Not done	Not done	Not done	Not done	Not done	Not done	Not done	Not done
Plantation at landfill sites	No such facilities in operation													
Closure of landfill sites and post care	NA	NA	NA	NA	NA	NA	NA	NA	NA	NA	NA	NA	NA	NA

Parameter	Halvad	Limbadi	Pataadi	S'nagar	Thangadh	Wadhwan	Songadh	Vyara	Chhotu- udepur	Dabhoi	Karjan	Padara	Savali
Authorization	29	30	31	32	33	34	35	36	37	38	39	40	41
	Yes	No	No	No	No	No	No	No	No	No	Yes	Yes	No
Collection													
Door to door	Yes	Yes	Yes	Yes	Partially	Yes	Yes	Yes	Yes	Partially	Yes	Yes	Yes
Slums, hotels	No	No	No	No	No	No	No	No	No	No	No	No	No
Slaughter houses	N.A.	N.A.	N.A.	N.A.	N.A.	N.A.	N.A.	N.A.	N.A.	N.A.	N.A.	N.A.	N.A.
Bio-med waste	No	No	No	No	No	No	Yes	No	Yes	Yes	No	Yes	Yes
Demolition waste	No	No	No	No	No	No	Yes	Yes	No	No	No	No	No
Industrial waste	There are total 8 TSDFs and 4 Common HW Incinerators in Gujarat and the facilities available for disposal of Industrial Waste/Hazardous wastes. Such wastes are regulated under Hazardous waste (Management and Handling) Rules, 2008. While issuing authorization to any HW generating industrial unit. GPCB ensures that they first become member of the Common HW facilities for disposal of HWs generated by them otherwise they shall have their own captive Hazardous waste facilities.												
Plastic waste	Yes	Yes	Yes	Yes	Yes	Yes	Yes	Yes	Yes	Yes	Yes	Yes	Yes
Hazardous waste	There are total 8 TSDFs and 4 Common HW Incinerators in Gujarat and the facilities available for disposal of Industrial Waste/Hazardous wastes. Such wastes are regulated under Hazardous waste (Management and Handling) Rules, 2008. While issuing authorization to any HW generating industrial unit. GPCB ensures that they first become member of the Common HW facilities for disposal of HWs generated by them otherwise they shall have their own captive Hazardous waste facilities.												
Segregation facilities	No	No	No	No	No	No	No	No	No	No	No	No	No
Storage facilities	Yes	Yes	Yes	Yes	Yes	Yes	Yes	Yes	Yes	Yes	Yes	Yes	Yes
Transportation facilities	Yes	Yes	Yes	Yes	Yes	Yes	Yes	Yes	Yes	Yes	Yes	Yes	Yes
Processing facilities	No	Yes	No	Yes	Yes	Yes	Yes	No	No	Yes	Yes	Yes	No
Disposal facilities	Open dumping	Open dumping	Open dumping	Open dumping	Open dumping	Open dumping	Open dumping	Open dumping	Open dumping	Open dumping	Open dumping	Open dumping	Open dumping
Facilities at the sites	No such facilities in operation												
Pollution prevention	Not done	Not done	Not done	Not done	Not done	Not done	Not done	Not done	Not done	Not done	Not done	Not done	Not done
Water quality monitoring	Not done	Not done	Not done	Not done	Not done	Not done	Not done	Not done	Not done	Not done	Not done	Not done	Not done
Plantation at landfill sites	No such facilities in operation												
Closure of landfill sites and post care	NA	NA	NA	NA	NA	NA	NA	NA	NA	NA	NA	NA	NA



## APPENDIX - XXII

Statement showing Budget and Expenditure on Municipal Solid Waste (MSW)  
in the Nagarpalikas test checked in Performance Audit

(Reference : Paragraph 4.1.8.2; Page 102)

(₹ in lakh)

Sr. No.	Name of District	Name of NP	Category	2010-11			2011-12			2012-13		
				Budget	Expenditure	Percentage	Budget	Expenditure	Percentage	Budget	Expenditure	Percentage
1	A'bad	Dholka	B	136.25	120.82	89	213.25	147.28	69	313.70	171.40	55
2	-do-	Viramgam	B	57.50	57.99	101	10.00	5.00	50	10.00	5.00	50
3	-do-	Sanand	C	57.50	57.99	101	61.35	64.16	105	79.30	75.95	96
4	-do-	Bavala	C	57.28	44.00	77	50.11	40.03	80	83.70	49.83	60
5	-do-	Dhandhuka	C	55.00	54.80	100	48.00	43.24	90	48.50	37.82	78
6	-do-	Barvala	D	5.00	3.90	78	5.00	4.89	98	5.00	4.62	92
7	-do-	Bareja	D	42.02	36.42	87	41.44	22.90	55	40.07	13.60	34
8	Amreli	Amreli	B	244.75	258.76	106	285.50	246.39	86	327.00	236.75	72
9	-do-	Savarkundla	B	105.23	57.61	55	115.48	74.69	65	104.35	76.03	73
10	-do-	Rajula	C	76.47	75.57	99	84.85	74.87	88	81.25	76.99	95
11	-do-	Bagasara	C	95.65	81.64	85	136.60	72.76	53	145.80	83.67	57
12	-do-	Jafrabad	C	14.13	14.74	104	15.16	16.85	111	17.84	19.34	108
13	-do-	Lathi	D	320.00	31.50	10	40.50	34.38	85	44.00	41.32	94
14	-do-	Babara	D	1.34	0.53	40	0.32	0.66	206	0.39	0.67	172
15	-do-	Chalala	D	21.11	20.84	99	22.89	21.38	93	35.17	28.89	82
16	-do-	Damnagar	D	0.00	16.83	-	0.00	18.83	-	0.00	20.72	-
17	Banaskantha	Palanpur	A	52.00	20.58	40	84.00	16.52	20	32.10	13.01	41
18	-do-	Deesa	B	412.50	175.93	43	293.80	326.85	111	472.10	293.32	62
19	-do-	Tharad	D	39.00	31.66	81	55.80	32.83	59	59.00	34.21	58
20	-do-	Dhanera	D	73.00	49.00	67	78.00	46.43	60	86.00	60.00	70
21	-do-	Bhabhar	D	16.17	14.60	90	24.08	16.66	69	28.35	24.80	87
22	-do-	Thara	D	6.10	0.10	2	0.50	36.75	7350	3.75	36.70	979
23	Surat	Bardoli	B	104.56	94.51	90	117.00	111.76	96	124.00	120.83	97
24	-do-	Tarsadi	D	20.00	13.75	69	25.00	15.14	61	30.00	18.18	61
25	-do-	Mandvi	D	48.90	18.29	37	21.25	26.86	126	92.11	36.77	40
26	-do-	Kanakpur	D	50.00	42.11	84	40.00	36.49	91	30.00	23.36	78
27	Tapi	Vyara	C	0.00	0.00	-	0.00	0.00	0	0.00	1.18	-
28	-do-	Songadh	D	0.00	34.80	-	0.00	24.65	-	0.00	35.21	-
29	S'nagar	S'nagar	A	44.00	12.47	28	57.25	15.28	27	24.00	12.72	53
30	-do-	Dhangadhra	B	125.00	153.00	122	171.00	179.00	105	185.00	203.00	110
31	-do-	Wadhwan	B	60.00	69.68	116	85.00	82.03	97	125.00	56.37	45
32	-do-	Limbadi	C	141.04	136.06	96	148.79	147.04	99	184.09	161.74	88
33	-do-	Thangadh	C	0.95	0.95	100	1.15	1.15	100	00.00	00.00	0
34	-do-	Halvad	D	66.82	61.64	92	64.47	78.55	122	78.91	96.95	123
35	-do-	Chotila	D	2.50	2.94	118	3.65	3.50	96	5.20	3.06	59
36	-do-	Patadi	D	00.00	00.00	--	00.00	00.00	0	00.00	00.00	0
37	Vadodara	Dabhoi	B	12.00	1.86	16	12.00	0.00	0	0.00	0.00	0
38	-do-	Padra	C	1.00	0.53	53	1.00	0.00	0	1.00	0.00	0
39	-do-	Karjan	C	68.75	37.59	55	79.50	49.06	62	82.40	68.27	83
40	-do-	Chhotaudepur	D	33.32	37.61	113	49.34	38.61	78	69.36	51.01	74
41	-do-	Savali	D	Awaited (March 2014)	Awaited (March 2014)	Awaited (March 2014)	Awaited (March 2014)	Awaited (March 2014)	Awaited (March 2014)	Awaited (March 2014)	Awaited (March 2014)	Awaited (March 2014)

**APPENDIX –XXIII**  
**Deficient services of consultants**  
**(Reference: Paragraph 4.1.9.3; Page 106)**

Details	(₹ in crore)						
	SLF-01 Khambhat	SLF-02 Himmatnagar	SLF-03 Dhandhuka	SLF-04 Viramgam	SLF-05 Palampur	SLF-06 Patan	SLF-07 Godhra
Name of the agency	Niraj Construction	Niraj Construction	Ramky Enviro Engineering Limited	Varun Construction	Sevani Construction	Varun Construction	Varun Construction
Date of work order	30.01.2009	21.02.2009	07.11.2009	07.11.2009	07.11.2009	07.11.2009	07.11.2009
Stipulated date of completion	29.10.2009	20.11.2009	06.11.2010	06.11.2010	06.11.2010	06.11.2010	06.11.2010
Actual Date of Completion	31.01.2013	30.06.2011	31.01.2013	31.01.2013	31.01.2013	31.01.2013	31.01.2013
<b>Delay in completion (in months)</b>	<b>39</b>	<b>19</b>	<b>26</b>	<b>26</b>	<b>26</b>	<b>26</b>	<b>26</b>
Estimated cost	5.29	3.90	4.14	4.44	7.74	6.60	8.96
Tender Cost	6.23	6.95	4.13	4.22	6.35	5.92	8.19
Total expenditure	9.88	7.00	Final bill pending	5.09	8.62	7.79	8.51
<b>Excess expenditure</b>	<b>3.65</b>	<b>0.05</b>	<b>Final bill pending</b>	<b>0.87</b>	<b>2.27</b>	<b>1.87</b>	<b>0.32</b>
Name of the Consultants	Senes Consultants	Mahindra Acres Consulting Engineers Limited	Senes Consultants	Senes Consultants	Mahindra Acres Consulting Engineers Limited	Mahindra Acres Consulting Engineers Limited	Senes Consultants

## APPENDIX –XXIV

## Benefits of ‘tendered rate’ not received

(Reference : Paragraph 4.1.9.3; Page 107)

Place of SLF	Tender Items	Quantity of Earth work including bentonite (Cubic meter)	Tender Rate per cubic meter (in ₹)	Quantity of Bentonite to be used as per tender (cubic meter) {three per cent of Col. 3}	Amount payable for tendered quantity (₹ in lakh) {Col. 3 x Col. 4}	Total quantity of Bentonite used (cubic meter)	Excess Quantity of Bentonite used against tendered quantity (cubic meter) {Col.7- Col.5}	Unit cost of Bentonite per Cubic metre (in ₹) {Col.6/ Col. 5}	SOR rates for quantities above 130 per cent of tender quantity of Bentonite (in ₹)	Amount paid for excess Bentonite (₹ in crore) (Col. 8 x 10)	Extra avoidable expenditure {(Col. 10 – Col. 9) x Col. 8} (₹ in crore)
1	2	3	4	5	6	7	8	9	10	11	12
Patan	Soil liner by adding three per cent Bentonite	22,407	60	672	13.44	6,274	5,602	2,000	2,692	1.51	0.39
Palanpur		28,557	35	857	10.00	9,839	8,982	1,167	2,500	2.25	1.20
Total										1.59	

APPENDIX - XXV

Statement showing status of sanction of funds and expenditure thereagainst in the NPs covered under UIDSSMT

(Reference: Paragraph 4.2.8.1 and 4.2.9; Page 116 and 118)

(₹ in lakh)

Sr. No.	Name of the NP	Date of approval	Approved cost	Share of			Amount released to GUDM		Total amount released by GUDM to ULBs			ULB share	Total funds available (Govt+State Government +ULB)	Total Expenditure (Per cent)	Physical Progress (Percentage of progress)
				Govt (80 per cent)	State Government (10 per cent)	ULB (10 per cent)	Govt	State Government	Govt share	State Government share	Total				
1	Amreli	11.10.2006	1,041.30	833.04	104.13	104.13	833.04	104.13	833.04	104.13	937.17	104.13	1041.30	992.09 (95)	Completed
2	Balasinor	26.09.2007	521.60	417.28	52.16	52.16	418.81	52.16	417.28	52.16	469.44	134.56	604.00	604.00 (100)	In progress (80)
3	Bardoli	26.09.2007	512.65	410.12	51.27	51.27	410.66	50.89	407.13	50.89	458.02	217.51	675.53	605.13 (90)	Completed
4	Bharuch	11.10.2006	1,319.21	1,055.37	131.92	131.92	1,097.58	131.92	1,055.37	131.92	1,187.29	338.62	1,525.91	1,514.95 (99)	Completed
5	Bhavnagar	11.10.2006	2,096.07	1,676.86	209.61	209.61	1,676.86	209.61	1,676.86	209.61	1,886.47	210.00	2,096.47	2,096.47 (100)	Completed
6	Billimora	22.01.2007	806.25	645.00	80.63	80.63	645	80.63	645.00	80.63	725.63	0.00	725.63	474.09 (65)	In progress (40)
7	Boriavi	22.01.2007	434.37	347.50	43.44	43.44	354	43.44	347.50	43.44	390.94	6.51	397.45	433.33 (109)	In progress (70)
8	Chaklasi	22.01.2007	713.20	570.56	71.32	71.32	570.56	71.32	570.56	71.32	641.88	217.81	859.69	859.69 (100)	In progress (80)
9	Chalala	22.01.2007	503.64	402.91	50.36	50.36	402.91	50.36	402.91	50.36	453.27	105.29	558.56	511.19 (92)	Completed
10	Chho-taudepur	26.09.2007	371.66	297.33	37.17	37.17	297.34	37.17	297.33	37.17	334.50	4.99	339.49	426.11 (126)	Completed
11	Dakor	22.01.2007	451.98	361.58	45.20	45.20	368.38	45.20	361.58	45.20	406.78	69.25	476.03	528.37 (111)	In progress (75)
12	Dhanera	22.01.2007	416.35	333.08	41.64	41.64	339.33	41.64	333.08	41.64	374.72	12.25	386.97	338.08 (87)	Completed
13	Dhangadhara	16.03.2007	1,461.04	1,168.83	146.10	146.10	584.42	73.05	584.42	73.05	657.47	80.36	737.83	608.83 (83)	In progress (66)
14	Dhoraji	10.11.2006	809.24	647.39	80.92	80.92	647.39	80.92	647.39	80.92	728.31	43.28	771.59	821.50 (106)	In progress (85)
15	Dwarka	21.01.2009	1,665.81	1,332.65	166.58	166.58	1,332.64	124.92	999.48	124.92	1,124.40	40.00	1,164.40	1,124.40 (97)	In progress (50)
16	Gandevi	26.09.2007	362.94	290.35	36.29	36.29	290.36	36.29	290.35	36.29	326.64	119.50	446.14	409.42 (92)	Completed
17	Godhra	18.03.2006	1,446.52	1,157.22	144.65	144.65	1,157.22	144.65	1,157.22	144.65	1,301.87	138.50	1,440.37	936.20 (65)	In progress (70)
18	Gondal	11.10.2005	1,378.88	1,103.10	137.89	137.89	1,103.1	137.89	1,103.10	137.89	1,240.99	66.92	1,307.91	1,282.18 (98)	In progress (90)
19	Himmatnagar	18.03.2006	814.90	651.92	81.49	81.49	651.95	81.49	651.92	81.49	733.41	81.49	814.90	815.00 (100)	Completed
20	Jamnagar	13.12.2006	1,973.83	1,579.06	197.38	197.38	1,550.23	193.80	1,550.24	193.80	1,744.04	141.00	1,885.04	2,094.47 (111)	Completed
21	Jasdan	26.09.2007	337.90	270.32	33.79	33.79	270.32	33.79	270.32	33.79	304.11	172.83	476.94	407.42 (85)	Completed
22	Jetpur-Navagadh	22.01.2007	2,384.09	1,907.27	238.41	238.41	1,907.28	238.40	1,907.20	238.40	2,145.60	130.52	2,276.12	2,306.21 (101)	In progress (90)
23	Junagedh	11.10.2006	1,537.15	1,229.72	153.72	153.72	1,278.91	115.29	922.29	115.29	1,037.58	0.00	1,037.58	922.38 (89)	In progress (55)
24	Kodi	18.03.2006	523.51	418.81	52.35	52.35	418.81	52.35	418.81	52.35	471.16	52.35	523.51	523.50 (100)	Completed
25	Kapadvanji	11.10.2006	799.81	639.85	79.98	79.98	639.18	79.98	639.85	79.98	719.83	203.31	923.14	826.66 (90)	Completed

Sr. No.	Name of the NP	Date of approval	Approved cost	Share of			Amount released to GUDM		Total amount released by GUDM to ULBs			ULB share	Total funds available (CoI+State Government +ULB)	Total Expenditure (Per cent)	Physical Progress (Percentage of progress)	
				CoI (80 per cent)	State Government (10 per cent)	ULB (10 per cent)	CoI	State Government	GoI share	State Government share	Total					
26	Kathlal	26.09.2007	392.44	313.95	39.24	39.24	313.96	39.24	313.95	39.24	353.19	0.01	353.20	282.47 (80)	In progress (75)	
27	Keshod	26.09.2007	1,080.97	864.78	108.10	108.10	864.76	108.10	864.78	108.10	972.88	616.01	1,588.89	1,313.87 (83)	In progress (90)	
28	Khambhat	26.09.2007	881.93	705.54	88.19	88.19	704.94	66.14	529.16	66.14	595.30	993.59	1,588.89	406.60 (26)	In progress (60)	
29	Kheda	18.03.2006	496.30	397.04	49.63	49.63	397.27	49.63	397.04	49.63	446.67	148.63	595.30	483.46 (81)	In progress (85)	
30	Lunawada	22.01.2007	477.04	381.63	47.70	47.70	381.63	35.78	286.22	35.78	322.00	207.00	529.00	423.14 (80)	In progress (60)	
31	Mahudha	26.09.2007	528.52	422.82	52.85	52.85	422.82	52.85	422.82	52.85	475.67	29.72	505.39	446.44 (88)	In progress (75)	
32	Mehsana	18.03.2006	940.74	752.59	94.07	94.07	752.59	94.07	752.59	94.07	846.66	94.08	940.74	940.73 (100)	Completed	
33	Modasa	21.01.2009	856.90	685.52	85.69	85.69	685.52	85.69	685.52	85.69	771.21	169.53	940.74	871.56 (93)	In progress (65)	
34	Palitana	11.10.2006	455.47	364.38	45.55	45.55	378.96	22.78	182.18	22.78	204.96	660.32	865.28	274.00 (32)	In progress (70)	
35	Pethapur	16.03.2007	428.20	342.56	42.82	42.82	348.98	42.82	342.56	42.82	385.38	0.00	385.38	282.42 (73)	In progress (60)	
36	Petlad	21.01.2009	1,063.28	850.62	106.33	106.33	425.31	26.58	212.66	26.58	239.24	152.56	391.80	365.00 (93)	In progress (30)	
37	Prantij	18.03.2006	279.92	223.94	27.99	27.99	223.94	27.99	223.94	27.99	251.93	20.00	271.93	271.93 (100)	Completed	
38	Radhampur	18.03.2006	224.52	179.62	22.45	22.45	179.62	22.45	179.62	22.45	202.07	69.86	271.93	198.57 (73)	In progress (55)	
39	Rajula	16.03.2007	366.89	293.51	36.69	36.69	299.02	36.69	293.51	36.69	330.20	36.69	366.89	492.05 (134)	Completed	
40	Savarkundla	16.03.2007	555.45	444.36	55.55	55.55	452.69	55.55	444.36	55.55	499.91	55.55	555.46	533.51 (96)	In progress (85)	
41	Shehera	26.09.2007	369.72	295.78	36.97	36.97	295.78	36.97	295.78	36.97	332.75	231.04	563.79	513.12 (91)	Completed	
42	Sojitra	21.01.2009	533.45	426.76	53.35	53.35	213.39	5.33	106.69	5.33	112.02	401.10	513.12	0.00 (0)	Just started	
43	Songadh	22.01.2007	334.30	267.44	33.43	33.43	272.45	33.43	267.44	33.43	300.87	0.00	300.87	305.88 (102)	Completed	
44	Suren- dranagar	18.03.2006	765.12	612.10	76.51	76.51	612.1	76.51	612.10	76.51	688.61	54.00	742.61	583.37 (79)	Completed	
45	Sutarpada	26.09.2007	657.74	526.19	65.77	65.77	526.2	65.77	526.19	65.77	591.96	150.65	742.61	425.67 (57)	In progress (50)	
46	Umreth	26.09.2007	762.98	610.38	76.30	76.30	305.18	19.07	152.60	19.07	171.67	430.64	602.31	0.00 (0)	Just started	
47	Unjha	26.09.2007	1,699.78	1,359.82	169.98	169.98	1,359.82	169.98	1,359.82	169.98	1,529.80	233.76	1,763.56	1,981.46 (112)	In progress (60)	
48	Upleta	26.09.2007	1,450.47	1,160.38	145.05	145.05	1,160.38	145.05	1,160.38	145.05	1,305.43	939.66	2,245.09	1,457.47 (65)	In progress (95)	
49	Valsad	18.03.2006	618.59	494.87	61.86	61.86	494.87	61.86	494.87	61.86	556.73	1,081.24	1,637.97	507.11 (31)	Completed	
50	Vijapur	16.03.2007	273.04	218.43	27.30	27.30	218.44	27.30	218.00	27.30	245.30	411.82	657.12	272.86 (42)	Completed	
51	Viramgam	26.9.2007	770.22	616.18	77.02	77.02	617.78	77.02	616.18	77.02	693.20	0.00	693.20	693.21 (100)	In progress (80)	
52	Wadhwan	26.09.2007	1,539.29	1,231.43	153.93	153.93	615.71	153.93	1,231.42	153.93	1,385.35	2.50	1,387.85	1,086.50 (78)	In progress (80)	
<b>TOTAL</b>				<b>43,487.17</b>	<b>34,789.74</b>	<b>4,348.72</b>	<b>4,348.72</b>	<b>32,770.39</b>	<b>394.87</b>	<b>32,770.39</b>	<b>394.87</b>	<b>35,612.48</b>	<b>9,880.94</b>	<b>45,493.42</b>	<b>37,874.07 (83)</b>	

(Source: Information furnished by Gujarat Urban Development Mission and Chief Officer of Balasinor, Palitana and Petlad)

**APPENDIX - XXVI**

**Statement showing details of delays in release of funds by the State Government  
(Reference: Paragraph 4.2.8.2; Page 117)**

( ₹ in crore)

Period of delay (in months)	Names of the NPs	Amount
1-6	Amreli, Bardoli, Bharuch, Bhavnagar, Billimora, Boriavi, Chalala, Chotaudepur, Dakor, Dhanera, Dhoraji, Dwarka, Gandevi, Gondal, Jamnagar, Jasdan, Junagadh, Kapadwanj, Keshod, Lunawada, Mahuda, Palitana, Rajula, Sahera, Songadh, Unjha (2 cases), Upleta, Vadhwani and Viramgam, (30 cases)	68.59
6-12	Amreli, Balasinor, Bardoli, Bharuch, Boriavi, Chaklasi, Dhanera, Dhangadhra, Dwarka, Godhra, Gondal, Himmatnagar, Jamnagar, Kadi, Kathlal, Keshod, Kheda, Mehsana, Modasa, Prantij, Radhanpur, Rajula, Shahera, Surendranagar, Sutrapada, Vadhwani, Valsad, Unjha and Viramgam (29 cases)	59.57
12-18	Bhavnagar, Dakor, Dhanera, Dhoraji, Gandevi, Gondal, Himmatnagar, Kathlal, Khambhat, Kheda, Mahuda, Palitana, Radhanpur, Rajula, Savarkundla, Umreth, Vijapur and Valsad (18 cases)	25.00
18-24	Bilimora, Dwarka, Godhra, Himmatnagar, Kadi, Kapadwanj, Mehsana, Prantij (2 cases), Surendranagar and Sutrapada (11 cases)	17.96
24-40	Bharuch, Dakor, Dhoraji, Godhra, Junagadh, Lunawada, Pethapur, Songadh and Valsad (9 cases)	14.85
<b>Total</b>	<b>97 cases</b>	<b>185.97</b>

(Source: Information furnished by GUDM)

## APPENDIX – XXVII

## Loss of Central assistance

(Reference: Paragraph 4.2.9.1; Page 118)

(₹ in crore)

Name of the Project	Amount of Central assistance lost	Reasons
Dwarka	0.78	<p>The CSMC approved (January 2009) a WS project for Dwarka NP at a cost of ₹ 16.66 crore to augment the existing WS scheme. The component of construction of Elevated Storage Reservoir (ESR) was not included in the DPR as two ESRs each having a capacity of eight lakh litres constructed 10 to 15 years ago already existed in the extant WS scheme. However, it was observed that the NP awarded (June 2012) the work for construction of an ESR at a tender cost (TC) of ₹ 0.98 crore against the estimated cost (EC) of ₹ 1.11 crore under a State sponsored scheme<sup>5</sup>. Thus, non-inclusion of ESR component in the DPR submitted under UIDSSMT resulted in loss of Central assistance of ₹ 0.78 crore (being 80 per cent of ₹ 0.98 crore).</p> <p>The Government stated (August 2013) that at the time of survey, two ESRs existed and one of them got damaged (February 2010) after approval of the DPR. The reply was not acceptable as the ESR was constructed 10-15 years back, the strength and condition of the ESR was required to be assessed during the course of the survey and could have been included in the DPR for its repair.</p>
Himmatnagar	1.83	<p>The CSMC approved (September 2006) a WS project for Himatnagar NP at a cost of ₹ 8.15 crore. Audit observed that the NP executed (March 2011) a WS project at a cost of ₹ 2.29 crore under State Sponsored Scheme<sup>6</sup> for Sarnam Housing Society and its surrounding areas as it was not included in the DPR submitted under UIDSSMT. Thus, failure of NP to include the same in the DPR resulted in non-availing of Central assistance of ₹ 1.83 crore (80 per cent of ₹ 2.29 crore).</p> <p>The Government stated (August 2013) that Sarnam Housing Society was not developed when the DPR was prepared. The reply was not acceptable as the NP executed the WS project under UIDSSMT under the long term planning upto the absolute year 2025 and the area in question was already included in the NP records as 'residential/commercial' well before launching the UIDSSMT.</p>
Keshod	0.66	<p>The CSMC approved (October 2007) a WS project for Keshod NP at a cost of ₹ 10.81 crore. Audit observed that (i) 450mm dia DI connectivity pipeline from Dhar and Pipalia sumps to Alap Colony ESR and (ii) connectivity pipeline at Agatrai Road sump to ESR, Amrutnagar sump to ESR, Trangarsha Pir sump to Suman Society ESR and Rajmahal ESR were not included in the DPR submitted under UIDSSMT. Since, the connectivity pipelines were not laid under this WS project, the expenditure of ₹ 13.14 crore incurred under the project did not yield complete result. The NP awarded (September 2010 and February 2013) the work for the above missing components at a cost of ₹ 0.82 crore by demanding funds under State Scarcity Grant<sup>7</sup>. Thus, failure of NP to include the same in the DPR resulted in non-availing of Central assistance of ₹ 0.66 crore (80 per cent of ₹ 0.82 crore).</p> <p>Government stated (August 2013) that during the survey carried out by the consultant it was found that connectivity existed to fill up the tanks of Aalap colony and Agatrai road through sumps of Dhar and Pipaliya and therefore no provision for the same had been made in the DPR at the relevant time. The reply was not acceptable as taking up the work of missing components subsequently indicates that the strength and condition of existing connectivity was not as per required specification for commissioning of the WS project.</p>
<b>Total</b>	<b>3.27</b>	

5 Swarnim Jayanti Mukhya Mantri Shaheri Vikas Yojna

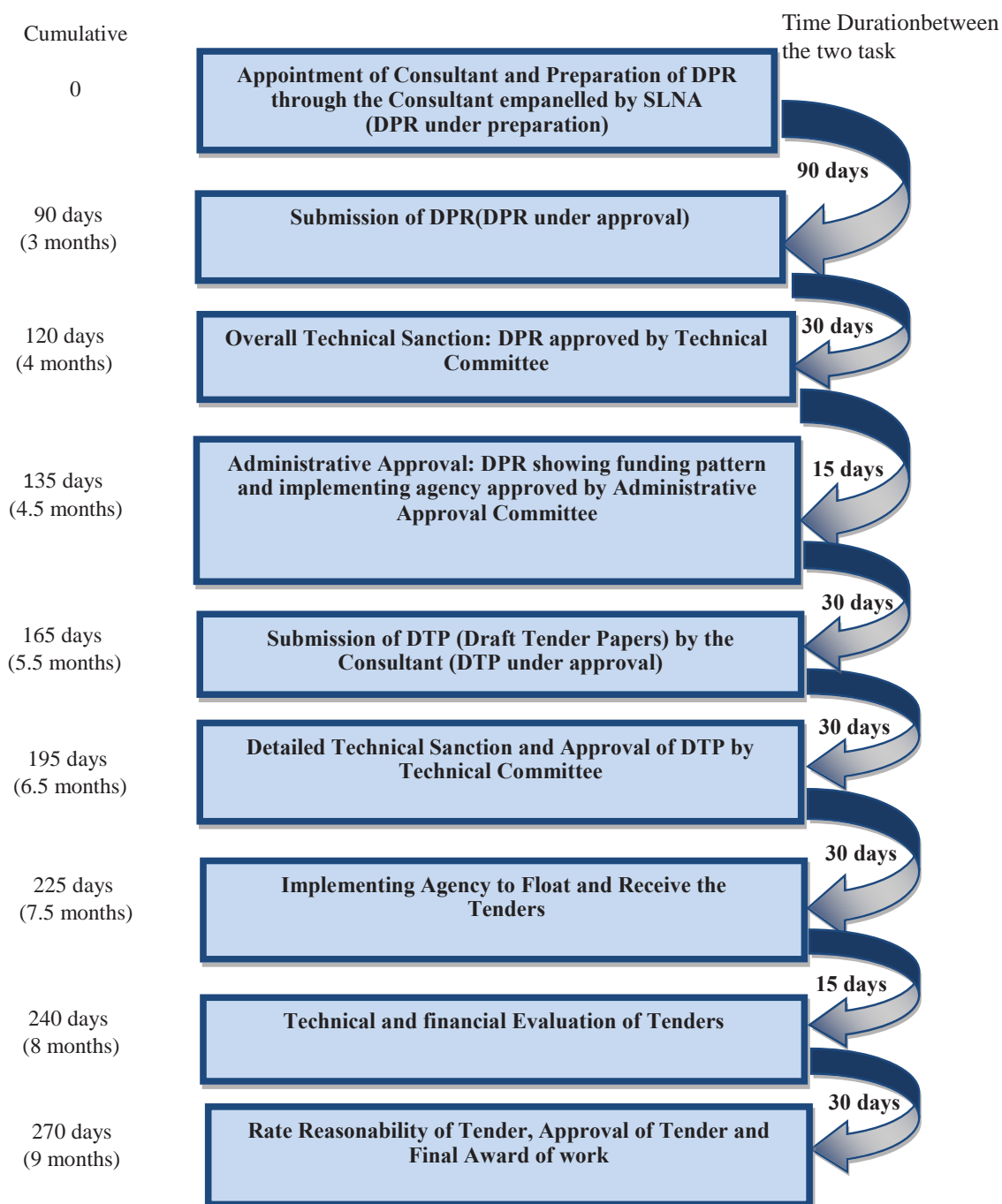
6 Swarnim Jayanti Mukhya Mantri Shaheri Vikas Yojna

7 Lack of sufficient availability of fund during special circumstances

APPENDIX – XXVIII

Flow chart for implementation of water supply scheme  
(Reference : Paragraph 4.2.10 and 4.2.10.1; Page 118 and 120)

**FLOW CHART FOR IMPLEMENTATION OF WATER SUPPLY SCHEME**





## APPENDIX - XXIX

## Statement showing details of cost overrun due to delay in commencement of work

(Reference: Paragraph 4.2.10.1; Page 119)

(₹ in crore)

Sl. No.	Name of NPs	Date of administrative approval	Scheduled date of completion as per AA	Date of work order	Time taken for issue of work order	Approved project cost	Esti-mated Cost put to tender	Tendered cost	Cost over-run
1	Bardoli	05.10.2007	04.10.2009	19.12.2008	14 months	5.13	4.73	7.55	2.42
2	Balasinor	05.10.2007	04.10.2009	06.10.2008	12 months	5.22	5.02	8.24	3.02
3	Dakor	28.02.2007	27.10.2007	12.12.2008	22 months	4.52	4.37	5.57	1.05
4	Dwarka <sup>8</sup>	22.06.2009	21.06.2011	12.06.2009	0 months	16.66	10.91	10.57	0.00
5	Gondal	13.12.2006	12.12.2008	17.01.2008	13 months	13.79	12.81	14.38	0.59
6	Himmat-nagar <sup>9</sup>	12.09.2006	11.03.2008	27.02.2006	0 months	8.15	8.15	8.19	0.04
7	Jetpur	28.02.2007	27.10.2007	10.10.2007	8 months	23.84	19.60	26.04	2.20
8	Keshod	05.10.2007	04.10.2009	20.11.2008	13 months	10.81	10.37	16.46	5.65
9	Pethapur	05.06.2007	04.02.2008	10.10.2007	4 months	4.28	4.11	4.98	0.70
10	Petlad <sup>10</sup>	22.06.2009	21.06.2011	19.03.2012	33 months	10.63	5.57	7.23	0.00
11	Prantij	12.09.2006	11.03.2008	15.12.2006	3 months	2.80	2.80	3.15	0.35
12	Radhanpur	12.09.2006	11.03.2008	21.09.2007	12 months	2.25	2.85	3.59	1.34
13	Songadh	28.02.2007	27.10.2007	22.06.2009	28 months	3.34	3.00	5.29	1.95
14	Sutrapada	05.10.2007	04.10.2009	12.06.2009	20 months	6.58	5.71	11.73	5.15
15	Valsad	12.09.2006	11.03.2008	15.03.2007	6 months	6.19	6.48	7.36	1.17
	<b>Total</b>					<b>124.19</b>			<b>25.63</b>

(Source: Information furnished by the Chief Officers of selected NPs)

8 Three components are not taken up

9 The project was originally sanctioned under "Gujarat Urban Development Year" 2005 a State sponsored scheme. On launching of UIDSSMT in December 2005 the project was shifted to UIDSSMT to avail central assistance

10 Part-II of the Project is not taken up

## APPENDIX – XXX

### Issues relating to delay in completion of projects (Reference : Paragraph 4.2.10.2; Page 121 and 122)

Name of the NP and project approval date	Reasons for delay
<b>Failure in obtaining permission/clearance</b>	
Gondal (December 2006)	Audit observed that the NP had approached (March 2008) the Railway authorities for laying the pipeline across railway track after 1 <sup>1/4</sup> years from the date of approval of the project and thereafter approached after six months. Though the work was completed (April 2012) by the Railways, the work remained incomplete as the work of joining the pipeline laid below the railway track with the remaining pipeline was not completed till date (April 2013) as the agency engaged for the project was relieved (May 2009) under foreclose <sup>11</sup> condition of the contract.
Petlad (June 2009)	The work was divided into two parts (a) Underground sump, pumping main, distribution main, pump house and pumping machinery at an EC of ₹ 5.57 crore and (b) Water Treatment Plant (WTP), gravity main <sup>12</sup> and intake well at an EC of ₹ 5.07 crore. The work of Part-I was awarded (March 2012) to an agency at Tender cost (TC) of ₹ 7.73 crore with the stipulated date of completion as March 2013. Audit observed that the NP had approached (October 2010) the Executive Engineer, Irrigation Division, Anand for drawing of water from Mahi Canal for the project. It had also approached the Executive Engineer, Roads and Buildings Division, Anand (October 2012) and Divisional Railway Manager, Vadodara (June 2012) for laying of pipeline across State Highway and Railway line respectively. However, the permission has not yet been received (March 2013). Thus, the work of Part-I remained incomplete. Further, the tenders for the work of Part-II had not been invited (March 2013). Non-completion of project resulted in deprival of potable water to the targeted population of 55,330.
<b>Failure in identification of water source</b>	
Dakor (February 2007)	NP applied (January 2008) to the Irrigation sub-division, Dakor for reservation of water from Shedhi Branch Canal. Irrigation sub-division Dakor offered remarks whether actual water was required or only in principal permission was sought for providing water during shut down of the canal for maintenance and repairs. Further, offered remarks for execution of agreement. However, the NP failed to comply with the remarks of the Irrigation Department for water source. This resulted in deprival of the project benefits to the targeted population of 24,396.
Radhanpur (March 2006)	As per the DPR, the source of water was from Santalpur Group WS Scheme (GWSS) based on Narmada Canal. However, it was observed that the NP and the State Government decided (March 2008 and September 2011) to lay separate pipeline from Ranakpur Head works to Radhanpur sump at a cost of ₹ 25.73 crore instead of from Santalpur GWSS as the water available from Santalpur GWSS was found inadequate <sup>13</sup> . This indicates that the source of water earmarked at the time of preparation of DPR was faulty resulting in delay in completion of the project besides loss of Central assistance of ₹ 20.58 crore (being 80 per cent of ₹ 25.73 crore) towards extra cost.  The Government stated (August 2013) that due to development of rural areas, adequate water could not be supplied to both city and rural areas, therefore GWSSB decided to setup a new line for Radhanpur town. However, the fact remains that the long term planning was faulty which resulted in extra cost and loss of central assistance.
<b>Reduction in scope of work leading to non-commissioning of project</b>	
Balasinor (October 2007)	The work of the project was divided into three parts (i) Renovation of existing intake well (EC of ₹ 0.10 crore), (ii) construction of RCC sump, two ESR <sup>14</sup> , etc. (EC of ₹ 4.92 crore) and (iii) electrification (₹ 0.04 crore) and three per cent contingent charges (₹ 0.15 crore) for tendering. GUDM released grant of ₹ 4.69 crore. The work of first part was completed (October 2012) at a cost of ₹ 0.11 crore. The work order for second part was issued (February 2009) at a cost of ₹ 8.13 crore with stipulated date of completion being February 2010.  As against the anticipated requirement of ₹ 7.73 crore, the NP could manage only ₹ 6.04 crore. Audit observed that the NP had dropped (March 2013), the construction of one pump house, chlorination plant and compound wall (EC of ₹ 0.11 crore) due to paucity of funds. It was further observed that inspite of incurring ₹ 6.04 crore (a) the pumping machinery was not put to use for want of electricity, (b) testing of rising main <sup>15</sup> was pending, (c) one out of two ESRs was not commissioned and (d) laying of 18 km. High Density Poly Ethylene (HDPE) distribution line was still in progress (August 2013). This resulted in deprival of benefit of the project to the targeted population of 39,330.  The Government stated (August 2013) that majority of the work under the project has been completed and water is being supplied through the existing scheme. The reply was not acceptable as most of the works carried out as mentioned above could not be put to use despite an expenditure of ₹ 6.04 crore having been incurred.

11 Means to declare the work as deemed to be completed at that stage

12 Pipeline for transmission of clear water by gravitational pull

13 As against demand of 40 lakh litre daily, only 30-32 litre water was drawn from Ranakpur Head works by three polder pumps. Further, due to taping in existing GWSS pipeline, tail-end villages of Santalpur GWSS were getting less water.

14 RCC ESR of 6.50 lakh litre capacity at Indira Nagar and six lakh litre capacity at Kalupur

15 Supplying and laying of rising main from Umvada Filter Plant

## APPENDIX - XXXI

## Statement showing details of excess expenditure incurred due to purchase of pipes from open market

(Reference : Paragraph 4.2.12.1; Page 127)

Dimension of pipe (dia in mm)	Quantity purchased in Running Metre (RMT)	Rate as per GWSSB Rate Contract in RMT (Amount in ₹)	Cost as per GWSSB Rate Contract (₹ in crore)	Cost of the actual purchase (₹ in crore)	Excess expenditure due to purchase at higher rate (₹ in crore)
1	2	3	4 (2 x 3)	5	6 (5 - 4)
200	7,338	429.77	0.32	0.50	0.18
160	3,132	276.40	0.09	0.13	0.04
110	10,098	132.21	0.13	0.21	0.08
90	13,728	92.90	0.13	0.19	0.06
<b>Total</b>	<b>34,296</b>		<b>0.67</b>	<b>1.03</b>	<b>0.36</b>

(Source : Information furnished by the Chief Officer, Valsad NP and GWSSB, Gandhinagar)