

**APPENDIX-1.1**

*(Referred to in paragraph 1.7.1)*

**Statement showing year-wise position of inspection reports and paragraphs pending settlement**

Sl. No.	Name of the Department	Upto 2007-08		2008-09		2009-10		2010-11		2011-12		2012-13		Total	
		IR	Para	IR	Para	IR	Para	IR	Para	IR	Para	IR	Para	IR	Para
1.	Agriculture	2	3	6	7	-	-	1	2	2	3	-	-	11	15
2.	Animal Husbandry and Veterinary Services	-	-	-	-	-	-	1	1	-	-	-	-	1	1
3.	Archives, Archaeology and Museum	-	-	1	1	-	-	1	8	-	-	-	-	2	9
4.	Art and Culture	2	3	1	6	-	-	1	1	-	-	-	-	4	10
5.	Civil Supplies	-	-	-	-	-	-	1	2	-	-	-	-	1	2
6.	Commercial Taxes	-	-	1	1	-	-	-	-	-	-	1	5	2	6
7.	Co-operation	-	-	3	8	1	6	-	-	-	-	-	-	4	14
8.	Education	2	5	6	11	6	11	3	23	2	4	-	-	19	54
9.	Electoral Office	-	-	1	5	-	-	-	-	-	-	-	-	1	5
10.	Excise	-	-	-	-	-	-	-	-	-	-	1	8	1	8
11.	Fisheries	-	-	-	-	-	-	-	-	1	3	-	-	1	3
12.	Forests	-	-	-	-	1	4	3	10	1	1	-	-	5	15
13.	General Administration	3	3	1	1	-	-	2	2	-	-	1	5	7	11
14.	Housing	-	-	-	-	1	1	-	-	1	6	-	-	2	7
15.	Health	5	8	6	12	3	6	4	12	4	21	5	36	27	95
16.	Higher Education	2	2	2	2	1	1	1	12	-	-	-	-	6	17
17.	Home	5	5	1	3	-	-	1	1	2	10	-	-	9	19
18.	Information and Technology	-	-	-	-	-	-	-	-	-	-	1	10	1	10
19.	Information and Publicity	3	3	1	1	2	5	1	12	1	4	-	-	8	25
20.	Inland Water Transport	1	2	-	-	-	-	-	-	-	-	-	-	1	2
21.	Industries, Trade and Commerce	-	-	-	-	-	-	1	5	1	7	-	-	2	12
22.	Irrigation	2	2	-	-	4	5	6	9	5	18	5	29	22	63
23.	Labour	-	-	-	-	-	-	-	-	-	-	3	19	3	19
24.	Law	4	5	3	4	1	1	1	2	-	-	-	-	9	12
25.	Legislature	-	-	1	1	-	-	1	6	-	-	-	-	2	7
26.	Mines	1	3	-	-	1	1	-	-	-	-	-	-	1	3
27.	Panchayati Raj	6	9	2	9	1	2	1	9	4	41	2	8	16	78
28.	Printing and Stationery	-	-	-	-	-	-	1	1	-	-	-	-	1	1
29.	Public Works	6	7	3	6	16	41	10	34	10	64	4	27	49	179

*Audit Report for the year ended 31 March 2013*

30.	Revenue	6	16	5	11	4	13	2	8	1	3	-	-	18	51
31.	Rural Development	2	3	1	2	2	9	1	6	-	-	-	-	6	20
32.	Social Welfare	2	5	-	-	-	-	1	3	-	-	2	14	5	22
33.	Sports and Youth Affairs	1	1	-	-	1	1	-	-	1	2	-	-	3	4
34.	Technical Education	1	1	3	5	3	7	-	-	-	-	3	16	10	29
35.	Transport	2	3	-	-	1	1	-	-	1	11	-	-	4	15
36.	Town and Country Planning	4	13	-	-	-	-	-	-	-	-	1	6	5	19
37.	Tourism	-	-	-	-	1	1	-	-	1	8	-	-	2	9
38.	Urban Development	13	26	6	22	12	59	8	60	13	123	14	152	66	442
39.	Vigilance	-	-	1	1	-	-	-	-	-	-	-	-	1	1
40.	Women and Child Development	1	1	1	1	1	2	1	2	-	-	2	17	6	23
	<b>Total</b>	<b>76</b>	<b>129</b>	<b>56</b>	<b>120</b>	<b>62</b>	<b>176</b>	<b>54</b>	<b>231</b>	<b>51</b>	<b>329</b>	<b>45</b>	<b>352</b>	<b>344</b>	<b>1337</b>

## APPENDIX-1.2

*(Referred to in paragraph 1.7.3)*

**Statement showing number of paragraphs/reviews in respect of which Government explanatory memoranda had not been received**

Sl. No.	Name of Department	2008-09	2009-10	2010-11	Total
(1)	(2)	(3)	(4)	(5)	(6)
1.	Urban Development	1	1	-	2
2.	Forest	-	-	2	2
3.	Home	1	-	-	1
4.	Rural Development	-	-	1	1
5.	Health	-	-	1	1
6.	Public Works	-	1	-	1
7.	Water Resources	-	-	2	2
8.	Finance	-	-	2	2
<b>Total</b>		<b>2</b>	<b>2</b>	<b>8</b>	<b>12</b>

**Note:** Report of the C&AG for the year ended 31 March 2012 was placed in the legislature in October 2013.

APPENDIX-1.3

*(Referred to in paragraph 1.7.4)*

Statement showing Paragraphs (excluding General and Statistical) yet to be discussed by PAC as of September 2013

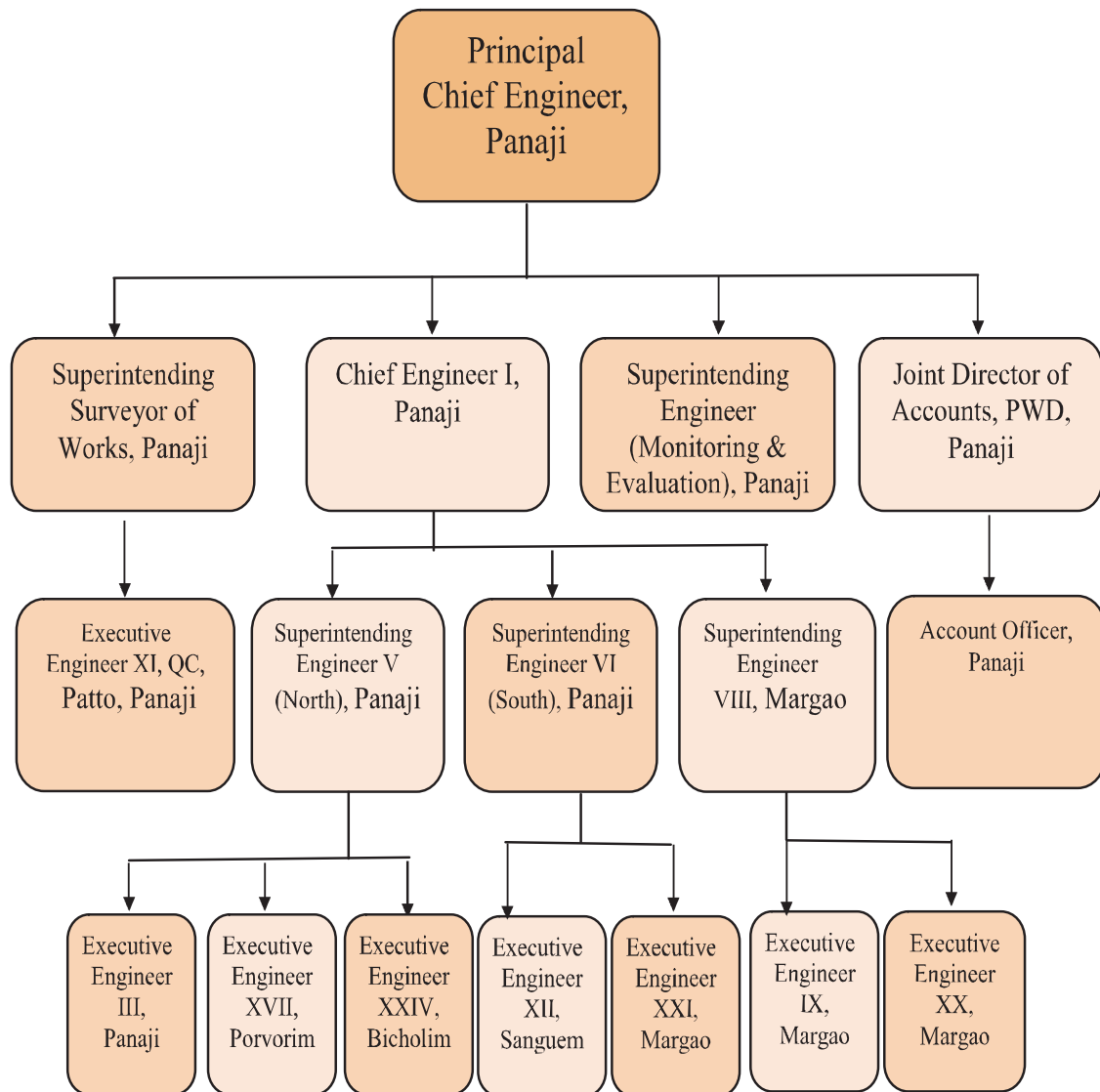
Sl. No.	Name of the Department	2008-09	2009-10	2010-11	Total
1.	Art and Culture	1	-	-	1
2.	Civil Supplies	-	1	-	1
3.	Finance	4	3	4	11
4.	Forests	1	-	2	3
5.	Housing	1	-	-	1
6.	Health	-	1	3	4
7.	Home	1	-	-	1
8.	Public Works	1	2	-	3
9.	Revenue	1	2	1	4
10.	Rural Development	-	1	-	1
11.	Transport	1	-	-	1
12.	Urban Development	1	1	1	3
13.	Water Resources	-	-	2	2
<b>Total</b>		<b>12</b>	<b>11</b>	<b>13</b>	<b>36</b>

**Note:** Report of the C&AG for the year ended 31 March 2012 was placed in the legislature in October 2013.

**APPENDIX-2.1**

*(Referred to in paragraph 2.3)*

**Organisational set up of PHE wing of PWD**



APPENDIX – 2.2

(Referred to in paragraph 2.8.1)

Water consumed by various categories of consumers in cubic metre

Sl. No.	Category	2008-09	2009-10	2010-11	2011-12	2012-13	Water consumed in MLD (Col. No. 7/365000)
1	2	3	4	5	6	7	8
1.	Domestic	61406718	73571589	66517462	81186680	83356655	228.37 <sup>1</sup>
2.	Commercial	10709677	11063909	11820778	19383554	20477290	56.10
3.	Government	1911324	1817538	1242124	2343217	2221037	6.09
4.	Industries	23748224	13970338	13698571	11953485	12610575	34.55
5.	Municipality	310566	268933	239006	306174	322673	0.88
6.	V. Panchayat	513577	114553	93264	95532	92848	0.25
7.	Defence	3281215	2666119	2537449	2590548	2277194	6.24
8.	Temporary Supply	193168	213363	180064	197428	822377	2.25
9.	Institutional	615020	1191789	1073966	1558445	2273343	6.23
10.	Public Stand Post	1101005	1121471	1117939	1081019	1070170	2.93
	<b>Total</b>	<b>103790494</b>	<b>105999602</b>	<b>98520623</b>	<b>120696082</b>	<b>125524162</b>	<b>343.89</b>

(Source: Furnished by the Department)

<sup>1</sup> 228.37 MLD is equivalent to 22,83,70,000 liter per day. Considering the total population of 14.59 lakh the liter per-capita per day (lpcd) works out to 156.52 liter.

**APPENDIX -2.3**  
**(Referred to in paragraph 2.9.3, 2.9.4)**  
**Details of execution of works under various packages of water supply sector under JICA project**

Pack-ages	Name of works	Date of opening of tender	Date of submission to GSWB by Bid Evaluation Committee (BEC)	Date of acceptance by GSWB	Date of work order	Stipulated date of completion	Number of months taken for issue of work order after opening tender	Number of months taken by GSWB for acceptance of tenders	Accepted tender cost (₹ in crore)	Escalation payable for the period @ 0.95 per cent per month (₹ in crore)		Status of physical completion as on January 2014 in percentage
										For total time taken for acceptance	For time taken by GSWB	
<b>1</b>	Expansion of 100 MLD WTP	June 2010	January 2011	February 2011	April 2011	October 2013	9	1	138.50	11.84	1.31	60
<b>2</b>	Transmission lines	February 2010	August 2010	February 2011	March 2011	April 2013	13	7	246.50	30.44	16.39	75
<b>3</b>	MBR at Sirvoi	January 2010	April 2010	November 2010	February 2011	February 2013	12	8	10.10	1.15	0.77	80
<b>4-8+ 10b</b>	Transmission lines, distribution lines and reservoirs	November 2011	June 2012	June 2012	September 2012	October 2014	10	0	104.51	9.93	0	25
<b>5</b>	Distribution main	December 2010	December 2011	January 2012	May 2012	June 2014	16	1	44.96	6.83	0.43	25
<b>6</b>	Transmission reservoirs, pumping stations in Sanguem taluka	February 2010	May 2010	June 2010	July 2010	August 2012	5	1	12.77	0.61	0.12	70
<b>7</b>	-do- Quepem taluka	February 2010	NA	NA	June 2010	August 2011	4	0	4.03	0.15	0	40

*Audit Report for the year ended 31 March 2013*

<b>9</b>	Rehabilitation of SWTP and Verna pumping station	Not tendered										0	0	0	0
<b>10 a</b>	Central water testing laboratory	February 2011	NA	NA	March 2011	April 2012	1	0	2.44	0	0	0	100		
<b>11</b>	Water meters and automatic reading component	October 2011	February 2012	December 2012	January 2013	February 2015	15 (from second call)	11	53.73	7.66	5.61	15			
<b>12</b>	Power supply to SWTP and Verna pumping station	February 2010	May 2010	June 2010	July 2010	August 2011	5	1	8.68	0.41	0.08	80			
									626.22	69.02	24.71				

*(Source: Compiled by Audit, from the records and information furnished by the Department)*



## APPENDIX -2.4

(Referred to in paragraph 2.10.1)

## Details of works divided into phases and awarded to same agencies

Sl. No.	Name of work	Estimated cost (₹ in lakh)	Name of agency	Awarded amount (₹ in lakh)	Date of work order
1.	Replacement of 200 mm dia. AC line from Codiem junction to Bhuipal Pump house at Poriem constituency (Phase I)	4.75	Sadanand Barve	4.98	25/7/2011
2.	Do- (Phase II)	4.75	Sadanand Barve	4.98	25/7/2011
3.	Replacement of old 200mm dia. AC pipeline from Hath junction to petrol pump in town Valpoi (Phase V)	4.75	M.D.K. Construction	4.94	17/6/2010
4.	-Do- (Phase IV)	4.75	M.D.K. Construction	4.95	24/6/2010
5.	-Do- (Phase I)	4.67	Vaibhav Construction	4.90	24/6/2010
6.	-Do- (Phase II)	4.64	Vaibhav Construction	4.88	24/6/2010
7.	Replacement of old 100 mm dia dist. main from Sawardem Bridge towards Sonal in VP Sawardem (Phase-I) - Valpoi Constituency	4.76	Damodar Construction	4.99	30/7/2010
8.	-Do- (Phase-II)	4.71	Damodar Construction	4.95	30/7/2010
9.	Replacement of old AC line from Copardem village to RWSS Pali Sump(Phase I) - Poriem Constituency	9.21	Sumitra Construction	9.67	1/3/2011
10.	-Do- Phase II	9.15	Sumitra Construction	9.61	20/6/2011
11.	-Do- Phase III	9.47	Sumitra Construction	9.94	21/6/2011

(Source: Compiled by Audit from the records of divisions)

**APPENDIX -2.5**

*(Referred to in paragraph 2.10.2)*

**Power factor penalty paid on eight electrical installations**

<b>Water supply scheme</b>	<b>Name of installation</b>	<b>Period covered</b>	<b>Power factor</b>	<b>Amount of penalty paid (in ₹)</b>
<b>Opa WSS</b>	Opa pumping station (HTC-26)	June 2012 to May 2013	0.86 to 0.90	1880119
	Opa treatment plant (HTC-137)	March 2010 to May 2013	0.15 to 0.73	116193
<b>Assanora WSS</b>	Lamgao pumping station, Mayem (HTC-19(B))	March 2010 to May 2013	0.62 to 0.84	82104
<b>Sanquelim WSS</b>	Sanquelim pumping station, Govt. Hospital, Sanquelim	June 2010 to May 2013	0.67 to 0.80	397111
<b>Podocem WSS</b>	40 MLD water treatment plant, Podocem-Sanquelim	April 2011 to May 2013	0.51 to 0.66	87513
	40 MLD Jack well	November 2010 to May 2013	0.83 to 0.89	697565
<b>Salaulim WSS</b>	Pumping station, Sanguem	July 2010 to May 2013	0.73 to 0.82	300916
	Salaulim WTP	July 2011 to May 2013	0.84 to 0.85	2310182
<b>Total amount of power factor penalty paid</b>				<b>5871703</b>

*(Source: Compiled by Audit from electricity bills)*

## APPENDIX -2.6

*(Referred to in paragraph 2.11.1)*

## Number of consumers under various categories

Sl. No.	Category	2008-09	2009-10	2010-11	2011-12	2012-13
1.	Domestic	211989	223645	239905	249410	258201
2.	Commercial	4102	4894	5125	5345	5392
3.	Government	1022	1041	1304	1311	1452
4.	Industries	286	285	285	318	289
5.	Municipality	250	122	120	123	106
6.	V. Panchayat	391	374	354	375	374
7.	Defence	38	40	40	40	40
8.	Temporary Supply	279	277	262	272	283
9.	Institutional	373	383	402	416	431
10.	Public Stand Post	815	692	685	735	787
	<b>Total</b>	<b>219545</b>	<b>231753</b>	<b>248482</b>	<b>258345</b>	<b>267355</b>

*(Source: Furnished by the Department)*

APPENDIX -2.7

(Referred to in paragraph 2.11.2)

Water tariffs during the period 2008-09 to 2012-13

Sl. No.	Category of consumer	Rates prevailing in April 2013	Rates prevailing in April 2008	Percentage increase/decrease in the maximum slab
1.	Domestic/registered co-operative societies	₹ 2.5/m <sup>3</sup> upto 25 m <sup>3</sup> , ₹ 7/m <sup>3</sup> from 25 m <sup>3</sup> to 35m <sup>3</sup> , ₹ 10/m <sup>3</sup> from 35 m <sup>3</sup> to 50 m <sup>3</sup> and ₹ 15/m <sup>3</sup> above 50 m <sup>3</sup> . MC- ₹ 40 pm	₹ 2.5/m <sup>3</sup> up to 20 m <sup>3</sup> ₹ 5/m <sup>3</sup> above 20 m <sup>3</sup> , MC- ₹ 30 pm	200
2.	Student hostels, hospitals, dispensaries and recognised charitable trust(G)	₹ 7/m <sup>3</sup> MC- ₹ 70 pm	₹ 5.5/m <sup>3</sup> Minimum ₹ 30/month	45
3.	Student hostels, hospital, dispensaries, business profession, educational institution not falling under Goa, Daman and Diu Shops and Establishment Act	₹ 15/m <sup>3</sup> upto 250 m <sup>3</sup> and ₹ 18/m <sup>3</sup> above 250 m <sup>3</sup> . MC- ₹ 140 pm	₹ 12/m <sup>3</sup> upto 300 m <sup>3</sup> ₹ 15/m <sup>3</sup> above 300 m <sup>3</sup> Minimum ₹ 30/month	20
4.	Small hotels having no restaurant attached, rooms less than 15 with A/C rooms ≤ 3 and government tourist hostels/small restaurants non-A/C area upto 150 sqm	₹ 17/m <sup>3</sup> upto 80 m <sup>3</sup> and ₹ 22/m <sup>3</sup> above 80 m <sup>3</sup> . MC- ₹ 170 pm	₹ 12/m <sup>3</sup> upto 100 m <sup>3</sup> and ₹ 15/m <sup>3</sup> above 100 m <sup>3</sup> , MC- ₹ 150 pm	46
5.	Akhil Gomantak Nabhik Samaj	₹ 15/m <sup>3</sup> (flat rate). MC- ₹ 150 pm	₹ 12/m <sup>3</sup> (flat rate), MC- ₹ 30 pm	25
6.	Defence	₹ 17/m <sup>3</sup> MC- ₹ 170 pm	₹ 12/m <sup>3</sup> Minimum ₹ 150/month	41
7.	Fishing boat owners/operators, jetties associations, SGPDA market complex	₹ 15/m <sup>3</sup> MC- ₹ 180 pm	₹ 12/m <sup>3</sup> Minimum ₹ 150/month	25
8.	Small/medium/large scale and all type of industries/hotels	₹ 30/m <sup>3</sup> MC- ₹ 280 pm	₹ 22/m <sup>3</sup> Minimum ₹ 150/month	36

9.	Commercial/Mormugoa Port Trust/Bar/Cinema theatres/establishments registered under Goa, Daman and Diu Shops and Establishments Act. including building construction	₹ 35/m <sup>3</sup> , MC- ₹ 300 pm	₹ 30/m <sup>3</sup> Minimum ₹ 150/month	16
10.	Public water taps installed in to the municipality/panchayat areas	₹ 300 per tap per month charged to municipality/GP	₹ 180 per tap per month charged to municipality/GP	66
11.	Supply of water by tankers	₹ 700 per trip(small tanker upto 6 m <sup>3</sup> ) and ₹ 900(big tanker, 6 m <sup>3</sup> to 10 m <sup>3</sup> )	₹ 500 per trip(small tanker upto 6 m <sup>3</sup> ) and ₹ 700(big tanker, 6 m <sup>3</sup> to 10 m <sup>3</sup> )	40

(Source: Furnished by the Department)

**APPENDIX -2.8**

*(Referred to in paragraph 2.11.3.4)*

**Calculation of potential revenue on unaccounted water**

Sl. No.	Category	Total quantity consumed and metered in 2012-13 ie after NRW of 35 per cent (in m <sup>3</sup> ) (refer Appendix-2)	NRW @ 35 Per cent Col. C/65x35 (in cubic metre)	NRW in excess of 15 per cent (Col. C/65x20)	Rates per cubic metre (in ₹)	NRW in value Col. DxE (in ₹)
A	B	C	D	E	F	G
1.	Domestic	83356655	44884353	25648202	15	384723030
2.	Commercial	20477290	11026233	6300705	35	220524675
3.	Government	2221037	1195943	683396	17	11617732
4.	Industries	12610575	6790310	3880177	30	116405310
5.	Municipality	322673	173747	99284	17	1687828
6.	V. Panchayat	92,848	49995	28569	17	485673
7.	Defence	2277194	1226181	700675	17	11911475
8.	Temporary Supply	822377	442818	253039	35	8856365
9.	Institutional	2273343	1224108	699490	18	12590820
10.	Public Stand Post	1070170	576245	329283	15	4939245
	<b>Total</b>	<b>125524162</b>	<b>67589933</b>	<b>38622820</b>		<b>773742153</b>

## APPENDIX -3.1

(Referred to in paragraph 3.1.1)

Details of agreements entered into with contractors for supply of pipes despite having pipes in store

Sl. No.	Name of work	Agreement No	Quantity in meter	Diameter	Cost as per tender
1.	Replacement of AC pipelines opp. Ruth Furtado house at Machado Cave, Dona paula	129/12-13	154	150 mm	436548
2.	Replacement of AC pipelines from Girish Prabhu house to Housing Board building, Durgawadi, Taleigao	166/12-13	300	150 mm	850419
3.	Replacement of AC pipelines from Radesham bar to Adarsh Colony at Carambolim	151/12-13	130	150 mm	368515
4.	Replacement of AC pipelines from Raikar house to Chaves's house at Carambolim	152/12-13	126	150 mm	367416
5.	Replacement of AC pipelines near Sati temple at Dongrim	124/12-13	130	150 mm	368515
6.	Replacement of AC pipelines near Western street at Donapaula	228/12-13	49.50	150 mm	140319
7.	Replacement of AC pipelines behind Damodar Mangalji building, Donapaula	130/12-13	124.50	150 mm	351473
			27.50	200 mm	94836
8.	Replacement of AC pipelines opp. Cidade de Goa, Donapaula	178/12-13	121	200 mm	417280
9.	Replacement of AC pipelines from Hirson metal factory to Classic cafe at Nagalim, Taleigao	12/12-13	164	150 mm	522504
10.	Replacement of AC pipelines behind Kamat house near Satteri Temple, Bhatulem	266/12-13	22	150 mm	62322
11.	Replacement of AC pipelines from Cidades de Goa guest house to NIO qtrs junction at Donapaula	265/12-13	149	150 mm	422013
12.	Shifting of 200 mm PVC pipeline opp. Ocean Park, Donapaula	125/12-13	115	200 mm	396286

13.	Replacement of AC pipelines from ICAR to culvert at Old Goa	118/12-13	265	150 mm	751203
14.	Replacement of AC pipelines from Anil Durbhatkar house to culvert at Marzuawado, Diwar	126/12-13	143	150 mm	405366
15.	Procurement of 200 mm and 250 mm dia. DI Pipes	123/12-13	50 (3448)	200 mm	172446
16.	Procurement of 150 and 250 mm dia. DI pipes	167/12-13	60 (2835)	150 mm	170100
	<b>Total</b>		<b>1837 213.50</b>	<b>150 mm 200 mm</b>	<b>6297561</b>



**APPENDIX 3.2**  
(Referred to in paragraph 3.1.2)

**Details of payments made to contractors for supply of pipes over and above the market rates**

Sl. No.	Pipes procured	Quantity in running metre (Rmt)	Rates of pipes as per supply order to manufacturer (per Rmt)	Amount payable as per tender (per Rmt)	Excess amount as per tender (per Rmt)	Total excess amount (in ₹)
<b>Phase III covering Zones 1,2,3,7,8 and 9</b>						
1.	450 mm CI pipe	414	8045.36	12000	3954.64	1637220.96
2.	300 mm CI pipe	123	4006.46	9000	4993.54	614205.42
3.	200 mm CI pipe	1878	2282.87	3500	1217.13	2285770.14
4.	150 mm CI pipe	496	1571.42	3000	1428.58	708575.68
5.	400 mm DI pipe	63	3650	10000	6350	400050
6.	200 mm DI pipe	546	1435	3800	2365	1291290
7.	150 mm DI pipe	273	1068	3000	1932	527436
8.	100 mm DI pipe	1102.50	722	1800	1078	1188495
9.	180 mm HDPE pipe	17098	440	1560	1120	19149760
10.	200 mm HDPE pipe	231.60	540	2500	1960	453936
11.	250 mm HDPE pipe	116	845	3000	2155	249980
<b>Total (A)</b>						<b>28506719</b>
<b>Phase II covering Zone 16 (part) &amp;17 (part)</b>						
1.	700 mm CI pipe	323.05	18113	27000	8887	2870945
2.	600 mm DI pipe	750	6650	20300	13650	10237500
3.	180 mm HDPE pipe	1385.70	440	1500	1060	1468842
4.	250 mm HDPE pipe	562.35	845	2100	1255	705749
<b>Total (B)</b>						<b>15283036</b>
<b>Grand total for two works (A+B)</b>						<b>43789755</b>

**APPENDIX 3.3**

*(Referred to in paragraph 3.1.2)*

**Calculation of excess amount paid to contractor**

Sl. No.	Pipes procured	Quantity procured in Running metre (Rmt)	Purchase price of pipes procured by the contractor	Rate as per tender	Amount payable as per tender	Total excess amount payable (in ₹)
1.	150mm CI pipe	1519.65	4869600	8435	24240906	19371306
2.	200	465.90		12405		
3.	250	339.50		16622		
4.	250mm DI pipe	960	1876600	5687	5459520	3582920
5.	180mm HDPE pipe	5873.20	2501604	2481	14571409	12069805
	<b>Total</b>		<b>9247804</b>		<b>44271835</b>	<b>35024031</b>

## APPENDIX 3.4

*(Referred to in paragraph 3.1.2)*

## Calculation of excess amount paid to contractor

Sl. No.	Details of pipes	Quantity in Rmt	Market rate of the pipes	Payable as per tender	Excess amount per Rmt	Total excess amount (in ₹)
1.	600 mm CI pipe	878.95	16000	26000	10000	8789500
2.	500 mm CI pipe	439.40	12000	18000	6000	2636400
3.	450 mm CI pipe	799.50	8045.36	16000	7954.64	6359734
4.	350 mm CI pipe	374	6030	11000	4970	1858780
5.	300 mm CI pipe	354.20	4006.46	9000	4993.54	1768712
6.	250 mm CI pipe	10	3150	7500	4350	43500
7.	200 mm CI pipe	380.10	2282.87	5000	2717.13	1032781
8.	150 mm CI pipe	599.85	1571.42	3500	1928.58	1156916
9.	300 mm DI pipe	819	2550	6500	3950	3235050
10.	100 mm DI pipe	63	722	2000	1278	80514
11.	180 mm HDPE pipe	11906.45	440	1050	610	7262934
12.	200 mm HDPE pipe	172.45	540	1250	710	122439
13.	225 mm HDPE pipe	726.40	700	1500	800	581120
14.	250 mm HDPE pipe	304.30	845	1800	955	290606
<b>Total</b>						<b>35218986</b>

**APPENDIX 3.5**

*(Referred to in paragraph 3.1.5)*

**Calculation of excess amount paid to Marketing Federation**

CDPO	Wheat			Rice		
	Quantity in Kgs	Rate (average)	Amount (in ₹)	Quantity in Kgs	Rate (average)	Amount (in ₹)
<b>Tiswadi</b>	70754	20.95	1482495	41535	25.60	1063155
<b>Bicholim</b>	44119	20.60	908851	37222	26.78	996805
<b>Bardez</b>	82539	18.60	1535268	88416	26.78	2367780
<b>Pernem</b>	21208	18.54	393196	0		0
<b>Ponda</b>	13994	21.30	298192	0		0
<b>Sattari</b>	159991	18.60	2976361	125	25.74	3218
<b>Quepem</b>	72600	19.57	1420782	0		0
<b>Canacona</b>	7895	19.57	154505	0		0
<b>Salcete</b>	94187	19.57	1843240	0		0
<b>Sanguem</b>	31205	19.52	609063	1763	26.65	46983
<b>Mormugao</b>	1652	19.64	32441	109490	26.08	2855140
<b>Total</b>	<b>600144</b>		<b>11654394</b>	<b>278551</b>		<b>7333081</b>

**Total payment ₹ 1.90 crore (Wheat ₹ 1.17 crore and Rice ₹ 0.73 crore)**

## APPENDIX-4.1

(Referred to in paragraphs 4.2.5 and 4.2.6.5)

## Rates of stamp duty and registration fees during the period 2008-2013

## Rates of stamp duty

Sl. No.	Particulars	Period	Consideration/ Market Value (in ₹)	Percentage of stamp duty
1.	Sale Deed	Upto 07/08/2008	Any amount	2
		08/08/2008 to 31/05/2013	Up to 50 lakh,	2
			50 lakh to 1 crore, Above 1crore	2.5 3
01/06/2013 onwards	Up to 50 lakh, 50 lakh to 1 crore, Above 1crore	3 3.5 4		
2.	Agreement for sale	18/08/2006 onwards	Any amount	1
		01/06/2013 onwards		2.9

## Rates of registration fee

Sl. No.	Particulars	Period	Consideration Value (in ₹)	Percentage of Regn. fee
1.	Sale deed	Upto 31/03/2012	Any amount	2
		01/04/2012 to 31/05/2013	Upto 25 lakh,	2
			25 lakh to 50 lakh, 50 lakh to 1crore, Above 1crore	3 4 5
1/6/2013 onwards	Upto 25 lakh, 25 lakh to 50 lakh, 50 lakh to 1crore, Above 1crore	1 2 3 4		
2.	Agreement for sale with possession	Upto 31/5/2013	Any amount	Full registration fee as for sale deed
		1/6/2013 onwards	Upto 25 lakh, 25 lakh to 50 lakh, 50 lakh to 1crore, Above 1crore	1 2 3 4
	Agreement for sale without possession	Upto 31/5/2013 01/06/2013 onwards	Any amount	₹ 50.00 ₹ 500.00

**APPENDIX-4.2**

*(Referred to in paragraph 4.2.6.6)*

**Cases of Re-transfer of properties acquired by agreement**

Details of properties acquired only by agreements alone without executing sale deeds, between first and second parties and then fully or partly retransferred to third parties									Reference to document in which re-transfer proved	
Sl. No.	Registration office	Document reference No.	Whether property in the land has passed on to the developer	If yes, the maximum of market value of the land and the consideration paid by the developer	Stamp duty payable on (e)	Stamp duty paid	Loss of revenue difference between (f) and (g)	Total land area (M2)	Document reference no.	Date of Reg.
(a)	(b)	(c)	(d)	(e)	(f)	(g)	(h)	(i)	(j)	(k)
1.	CRSR Mormugao, Vasco	Reg- 56 vol-1039	Yes	20000000	600000	200000	400000	1667	Reg.391, vol.1062	04/03/10
2.	do	Reg- 1594 vol-629	Yes	10350000	207000	104000	103000	10350	Sr. No.181 Vol.1231	10/2/11
3.	do	Reg- 220 vol-929	Yes	3000000	60000	30000	30000	632.81	Reg.133, Vol-1045	22/01/10
4.	do	Reg- 669 vol-961	Yes	46800000	1404000	468000	936000	40800 +21470	Reg.1485, Vol.1019	09/11/09
5.	do	Reg-152 vol-788	Yes	4200000	84000	39100	44900	1346	Reg.189, Vol.1228	03/02/11
6.	do	Reg- 1276 vol-1005	Yes	12112500	363375	122000	241375	8075	Reg.110, Vol.1222	13/01/11
7.	CRSR Ilhas, Panaji	PNJ-BK1-000954-2012-PNJD-14	Yes	12000000	360000	120000	240000	2300	PNJ-KB1-1220-2012,CD-15	2012
8.	do	PNJ-BK1-03135-2011, PNJD-11	Yes	9010000	225250	91000	134250	1863	PNJ-BK1-0032-2012,CD-12	04/1/2012
9.	do	709/vol.2065	Yes	9300000	232500	93000	139500	1000	PNJ-BK1-100,2011,CD-10	22/08/2011
10.	do	1796/vol.1969	Yes	6900000	138000	69000	69000	3771	PNJ-BK1-2444-2010,CD-1	16/8/2010
11.	do	PNJ-BK1-1262-2011, PNJD8	Yes	30000000	900000	300000	600000	9395	PNJ-BK1-313-2011,CD-11	23/11/2011
12.	CRSR, Salcete, Margao	5761/vol 3200	Yes	2400000	48000	24000	24000	2662	MGO-BK1-4230-2011, CD-53	-
13.	do	MGO-BK1-01761-2010-MGOD-13	Yes	4933435	98669	49400	49269	139	MGO-BK1-0694-2011, CD-48	01/02/2011
14.	do	MGO-BK1-01762-2010-MGOD-13	Yes	4901485	98030	49100	48930	139	MGO-BK1-0695-2011, CD-48	01/02/2011
15.	CRSR, Bardez, Mapusa	BRZ-BK1-01872-2009, BRZD-27	Yes	10000000	300000	100000	200000	7758	BRZ-BK1-2420-2011,CD-174	13/05/2010
16.	do	Reg.2334/vol.2893	Yes	22000000	660000	220000	440000	8122	BRZ-BK1-4820-2010,CD-109	23/12/2010
17.	do	Reg.2680/vol.2605	Yes	16100000	322000	157700	164300	2300	BRZ-BK1-1169-2011,CD-143	08/03/2011
18.	do	Reg.2144/Vol.2567	Yes	4500000	90000	45000	45000	2700	BRZ-BK1-1792-2010,CD-63	18/5/2010
					<b>6190824</b>	<b>2281300</b>	<b>3909524</b>			

**APPENDIX – 4.3**  
*(Referred to in paragraph 4.4)*  
**Short Collection of renewal fees from five star hotels**

Name of hotel/Licensee	Licence No.	Fees not paid since	Amount due till May 2012	Amount paid (in ₹)	Amount due (in ₹)
Goa Marriot Resort Palms Hotels (India) Ltd. (M. Salgaocar & Company)	21/53/99-HD(G) dated 27/07/2004(20 Machines)	27/02/2004	2922 days x 10 x 173 rooms = ₹ 5055060	505060	Nil
	21/53/99-HD(G) dated 06/11/2008 (14 Machines)	06/11/2008	1461 days x 10 x 173 rooms = ₹ 2527530	2527530	Nil
M/s Holiday Inn Resort, Goa	21/48/96-HD(G) dated 05/08/2003	16/02/2004	3028 days x 10 x 203 rooms = ₹ 6146840	4449760	1697080
Vainguinim Valley Resort M/s Brito Amusements Pvt. Ltd.	21/1/2007-HD(G) dated 10/03/2008	10/03/2008	1544 days x 10 x 25 rooms = ₹ 386000	304240	81760
Majorda Beach Resort M/s Eastern International Hotels Ltd.	21/14/92-HD(G) dated 19/07/2006	01/04/2010	945 days x 10 x 120 rooms = ₹ 1134000	877200	256800
Intercontinental – the Grand Resort Goa M /s Bharat Hotels Limited	21/05/2006-HD(G) dated 14/06/2006	08/06/2006	2489 days x 10 x 255 rooms = ₹ 5571750	Nil	5571750
Ramada Carvela Beach Resort M/s Sunder G Advani, CMD, Renaissance, Varca (Advani Hotels & Resorts (India) Ltd.)	21/11/92-HD(G) dated 25/04/2008	25/04/2008	1826 days x 10 x 200 rooms = ₹ 3044000	Nil	3045000
<b>Total</b>			<b>23865180</b>	<b>13213790</b>	<b>10651390</b>

APPENDIX 4.4

(Referred to in paragraph 4.6)

Short levy of license fee from hoteliers

(₹ in lakh)

Sl. No.	Name of the Hotel	Registration category as per		Period involved	License fee		Short levy
		Excise Department	Tourism Department		Payable	Paid	
1.	Acron Hospitality	B	A	2008-09	8.89	0.65	8.24
				2009-10	7.96	0.65	7.31
				2010-11	7.04	0.65	6.39
				2011-12	6.12	0.65	5.47
				2012-13	5.49	0.65	4.84
2.	Ria Hospitality	B	A	2009-10	7.96	0.65	7.31
				2010-11	7.04	0.65	6.39
				2011-12	6.12	0.65	5.47
				2012-13	5.49	0.65	4.84
3.	Acerock Developers	B	A	2009-10	7.96	0.65	7.31
				2010-11	7.04	0.65	6.39
				2011-12	6.12	0.65	5.47
				2012-13	5.49	0.65	4.84
4.	Neelam's The Glitz	B	A	2007-08	9.95	0.55	9.40
				2008-09	8.89	0.65	8.24
				2009-10	7.96	0.65	7.31
				2010-11	7.04	0.65	6.39
				2011-12	6.12	0.65	5.47
				2012-13	5.49	0.65	4.84
5.	Ocean Palms Goa	B	A	2011-12	6.29	0.22	6.07
				2012-13	5.56	0.22	5.34
6.	Brisa Leisure Resorts Pvt. Ltd.	C	B	2009-10	1.50	0.13	1.37
				2010-11	1.32	0.13	1.19
				2011-12	1.15	0.13	1.02
				2012-13	0.98	0.13	0.85
7.	Horizon View (Horizon Grill Bar and Rest.)	C	B	2007-08	0.91	0.03	0.88
				2008-09	0.79	0.06	0.73
				2009-10	1.16	0.08	1.08
				2010-11	1.02	0.10	0.92
				2011-12	0.88	0.09	0.79
				2012-13	0.75	0.10	0.65
8.	Rahi Coral Beach Resort	C	B	2008-09	0.78	0.07	0.71
				2009-10	0.70	0.07	0.63
				2010-11	0.62	0.07	0.55
				2011-12	0.54	0.07	0.47
				2012-13	0.46	0.07	0.39
				<b>Total</b>	<b>159.59</b>	<b>14.03</b>	<b>145.56</b>



**APPENDIX-5.1**

(Referred to in paragraph 5.1.5)

**Statement showing particulars of up to date paid-up capital, loans outstanding and Manpower as on 31 March 2013 in respect of Government Companies and Statutory Corporations**

Sl. No	Sector and Name of the Company	Name of the Department	Month and year of incorporation	Paid-up Capital*			Loans outstanding at the close of 2012-13#				Debt Equity Ratio for 2012-13 (Previous Year)	Manpower (No. of employees as on 31.3.2013)	
				State Government	Central Government	Others	Total	State Government	Central Government	Others			Total
(1)	(2)	(3)	(4)	5 (a)	5 (b)	5 (c)	5 (d)	6 (a)	6 (b)	6 (c)	6 (d)	(7)	(8)
<b>A. Working Government Companies</b>													
<b>AGRICULTURE &amp; ALLIED</b>													
1.	Goa Forest Development Corporation Limited (GFDCL)	Forest	April 1997	268.91	-	-	268.91	-	-	-	-	-	83
2.	Goa Meat Complex Limited (GMCL)	Animal Husbandry	March 1971	25.00	23.96	12.86	61.82	-	-	-	-	-	68
3.	Goa State Horticultural Corporation Limited (GSHCL)	Agriculture	August 1993	499.50	-	-	499.50	-	-	-	-	-	29
	<b>Sector wise total</b>			<b>793.41</b>	<b>23.96</b>	<b>12.86</b>	<b>830.23</b>	<b>-</b>	<b>-</b>	<b>-</b>	<b>-</b>	<b>-</b>	<b>180</b>
<b>FINANCE</b>													
4.	EDC Limited (EDCL)	Finance	March 1975	8620.26	-	1472.22	10092.48	-	-	-	-	-	87
5.	Goa Handicraft Rural and Small Scale Industries Development Corporation Limited (GHRSSIDCL)	Industries, Trade & Commerce	November 1980	783.00	17.00	-	800.00	-	-	-	-	-	61
6.	Goa State Scheduled Casts and Other Backward Classes Finance and Development Corporation Limited (GSSCOBCFDCL)	Social Welfare	April 1990	612.33	158.21	-	770.54	-	750.36	-	750.36	0.97:1 (0.66:1)	15
7.	Goa State Schedule Tribes Finance and Development Corporation Limited (GSSTFDCL)	Tribal Welfare	March 2004	3060.00	300.00	-	3360.00	25.00	-	71.31	96.31	0.03:1 (0.05:1)	20
	<b>Sector wise total</b>			<b>13075.59</b>	<b>475.21</b>	<b>1472.22</b>	<b>15023.02</b>	<b>25.00</b>	<b>750.36</b>	<b>71.31</b>	<b>846.67</b>	<b>0.06:1</b>	<b>183</b>

(Figures in column 5(a) to 6(d) are ₹ in lakhs)

*Audit Report for the year ended 31 March 2013*

Sl. No.	Sector and Name of the Company	Name of the Department	Month and year of incorporation	Paid-up Capital*				Loans outstanding at the close of 2012-13#				Debt Equity Ratio for 2012-13 (Previous Year)	Manpower (No. of employees as on 31.3.2013)
				State Government	Central Government	Others	Total	State Government	Central Government	Others	Total		
(1)	(2)	(3)	(4)	5 (a)	5 (b)	5 (c)	5 (d)	6 (a)	6 (b)	6 (c)	6 (d)	(7)	(8)
	<b>INFRASTRUCTURE</b>												
8.	Goa State Infrastructure Development Corporation Limited (GSIDCL)	Finance	February 2001	366.00	-	6.00	372.00	-	-	13700.00	13700.00	36.83:1 (17.9:1)	62
9.	Info Tech Corporation of Goa Limited (ITCGL)	Information Technology	April 1990	1314.56	-	318.90	1633.46	-	-	11650.00	11650.00	7.13:1	40
10.	Sewerage and Infrastructural Development Corporation Limited (SIDCL)	Public Works	February 2001	705.00	-	-	705.00	-	-	-	-	-	13
	<b>Sector wise total</b>			<b>2385.56</b>	<b>-</b>	<b>324.90</b>	<b>2710.46</b>	<b>-</b>	<b>-</b>	<b>25350.00</b>	<b>25350.00</b>	<b>9.35:1</b>	<b>115</b>
	<b>MANUFACTURING</b>												
11.	Goa Auto Accessories Limited (GAAL)	Finance	September 1976	-	-	559.00	559.00	-	-	90.00	90.00	0.16:1 (0.16:1)	79
12.	Goa Antibiotics and Pharmaceuticals Limited (GAPL)	Finance	December 1980	-	-	1902.00	1902.00	-	-	1166.81	1166.81	0.61:1 (0.68:1)	207
	<b>Sector wise total</b>			<b>-</b>	<b>-</b>	<b>2461.00</b>	<b>2461.00</b>	<b>-</b>	<b>-</b>	<b>1256.81</b>	<b>1256.81</b>	<b>0.51:1</b>	<b>286</b>
	<b>SERVICES</b>												
13.	Goa Electronic Limited (GEL)	Finance	March 1976	-	-	180.00	180.00	-	-	907.46	907.46	5.04:1 (11.24:1)	9
14.	Goa Tourism Development Corporation Limited (GTDCL)	Tourism	March 1982	2264.69	-	-	2264.69	545.84	-	-	545.84	0.24:1 (0.30:1)	352
15.	Kadamba Transport Corporation Limited (KTCL)	Transport	January 1980	8964.33	-	-	8964.33	-	-	2500.00	2500.00	0.28:1 (0.66:1)	1861
	<b>Sector wise total</b>			<b>11229.02</b>	<b>-</b>	<b>180.00</b>	<b>11409.02</b>	<b>545.84</b>	<b>-</b>	<b>3407.46</b>	<b>3953.30</b>	<b>0.35:1</b>	<b>2222</b>

Total A (All sector wise working Government companies)													
Sl. No.	Sector & Name of the Company	Name of the Department	Month and year of incorporation	Paid-up Capital *			Loans outstanding at the close of 2012-13#			Debt Equity Ratio for 2012-13 (Previous Year)	Manpower (No. of employees as on 31.3.2013)		
				State Government	Central Government	Others	State Government	Central Government	Others			Total	
(1)	(2)	(3)	(4)	5 (a)	5 (b)	5 (c)	5 (d)	6 (a)	6 (b)	6 (c)	6 (d)	(7)	(8)
<b>B.</b>	<b>Working Statutory Corporations</b>												
	<i>INFRASTRUCTURE</i>												
1.	Goa Industrial Development Corporation (GIDC)	Industries, Trade & Commerce	1966	1802.18	1437.66	-	3239.84	-	-	-	-	-	233
2.	Goa Information Technology Development Corporation (GITDC)	Information Technology	November 2006	25.00	-	-	25.00	-	-	-	-	-	-
	<b>Sector wise total</b>			<b>1827.18</b>	<b>1437.66</b>	<b>-</b>	<b>3264.84</b>	<b>-</b>	<b>-</b>	<b>-</b>	<b>-</b>	<b>-</b>	<b>233</b>
	<b>Total B (All sector wise working Statutory corporations)</b>			<b>1827.18</b>	<b>1437.66</b>	<b>-</b>	<b>3264.84</b>	<b>-</b>	<b>-</b>	<b>-</b>	<b>-</b>	<b>-</b>	<b>233</b>
<b>C.</b>	<b>Non-Working Government Companies</b>			NIL									
<b>D.</b>	<b>Non-Working Statutory Corporations</b>			NIL									
	<b>Grand Total (A + B + C + D)</b>			<b>29310.76</b>	<b>1936.83</b>	<b>4450.98</b>	<b>35698.57</b>	<b>570.84</b>	<b>750.36</b>	<b>30085.58</b>	<b>31406.78</b>	<b>0.88:1</b>	<b>3219</b>

\* Paid up capital includes share application money

# Loans outstanding at the close of 2012-13 represent long term loans only

**APPENDIX-5.2**

(Referred to in paragraphs 5.1.13 and 5.1.14)

**Summarised financial results of Government Companies and Statutory Corporations for the latest year for which accounts were finalised**  
(Figures in column 5(a) to (11) are ₹ in lakh)

Sl. No	Sector and Name of the Company	Period of Accounts	Year in which finalised	Net Profit (+)/ Loss (-)			Turnover	Impact of Accounts Comments #	Paid up Capital (@/₹)	Accumulated Profit (+)/ Loss (-)	Capital employed (@)	Return on capital employed \$	Percentage return on capital employed	
				Net Profit/ Interest & Depreciation	Interest	Depre-ciation								Net Profit/ Loss φ
(1)	(2)	(3)	(4)	(5 (a))	(5 (b))	(5 (c))	(5 (d))	(6)	(7)	(8)	(9)	(10)	(11)	(12)
<b>A.</b>	<b>Working Government Companies</b>													
	<b>AGRICULTURE &amp; ALLIED</b>													
1.	Goa Forest Development Corporation Limited (GFDCL)	2011-12	2012-13	17.70	-	5.66	12.04	360.85	Nil comment	268.91	(+) 117.39	1853.30	12.04	0.65
2.	Goa Meat Complex Limited (GMCL)	2009-10	2011-12	(-)3.20	-	21.61	(-)24.81	194.30	Non Review	61.82	(+) 95.71	429.25	(-)24.81	-
3.	Goa State Horticultural Corporation Limited (GSHCL)	2006-07	2010-11	1.10	-	2.67	(-)1.57	345.63	(-)20.58	499.50	(-) 134.53	488.97	(-)1.57	-
	<b>Sector wise total</b>			<b>15.60</b>	<b>-</b>	<b>29.94</b>	<b>(-)14.34</b>	<b>900.78</b>		<b>830.23</b>	<b>(+) 78.57</b>	<b>2771.52</b>	<b>(-)14.34</b>	<b>-</b>
	<b>FINANCE</b>													
4.	EDC Limited (EDCL)	2012-13	2013-14	5264.04	1170.05	47.34	4046.65	6596.64	Under Finalisation	10092.48	(+) 10574.19	28962.45	5216.70	18.01
5.	Goa Handicraft Rural and Small Scale Industries Development Corporation Limited (GHRSSIDCL)	2011-12	2011-12	(-)121.71	1.44	9.01	(-)132.16	3683.87	(-)161.08	800.00	(-) 443.25	800.00	(-)130.72	-
6.	Goa State Scheduled Caste and Other Backward Classes Finance and Development Corporation Limited (GSSCOBCFDCL)	2002-03	2012-13	18.97	9.73	4.51	4.73	41.31	3.34	263.43	(-) 18.35	547.38	14.46	2.64
7.	Goa State Schedule Tribes Finance and Development Corporation Limited (GSSTFDCL)	2010-11	2012-13	18.97	4.27	4.79	9.91	54.39	-	1560.00	(-) 63.89	1331.49	14.18	1.06
	<b>Sector wise total</b>			<b>5180.27</b>	<b>1185.49</b>	<b>65.68</b>	<b>3929.13</b>	<b>10376.21</b>	<b>-</b>	<b>12715.91</b>	<b>(+) 10048.70</b>	<b>31641.32</b>	<b>5114.62</b>	<b>16.16</b>

Sl No	Sector and Name of the Company	Period of Accounts	Year in which finalised	Net Profit (+)/ Loss (-)				Turnover	Impact of Accounts Comments #	Paid up Capital @ (₹)	Accumulated Profit (+)/ Loss (-)	Capital employed @	Return on capital employed \$	Percentage return on capital employed
				Net Profit/ Loss before Interest & Depreciation	Interest	Depreciation	Net Profit/ Loss φ							
(1)	(2)	(3)	(4)	5 (a)	5 (b)	5 (c)	5 (d)	(6)	(7)	(8)	(9)	(10)	(11)	(12)
	<b>INFRASTRUCTURE</b>													
8.	Goa State Infrastructure Development Corporation Limited (GSIDCL)	2011-12	2012-13	1241.81	1011.41	17.63	212.77	20245.07	-	372.00	(+) 828.95	5536.86	1224.18	22.11
9.	Info Tech Corporation of Goa Limited (ITCGL)	2006-07	2012-13	23.92	0.17	15.22	8.53	6301.42	(-) 2.69	1633.47	(-) 214.37	1427.04	8.70	0.61
10.	Sewerage and Infrastructural Development Corporation Limited (SIDCL)	2010-11	2012-13	206.45	-	2.66	203.79	356.99	Non Review	605.00	(+) 279.92	709.74	203.79	28.71
	<b>Sector wise total</b>			<b>1472.18</b>	<b>1011.58</b>	<b>35.51</b>	<b>425.09</b>	<b>26903.48</b>	<b>-</b>	<b>2610.47</b>	<b>(+) 894.50</b>	<b>7673.64</b>	<b>1436.67</b>	<b>18.72</b>
	<b>MANUFACTURING</b>													
11.	Goa Auto Accessories Limited (GAAL)	2012-13	2013-14	(-) 130.37	26.17	14.79	(-) 171.33	546.57	Non Review	559.00	(-) 1036.41	(-) 260.31	(-) 145.16	-
12.	Goa Antibiotics and Pharmaceuticals Limited (GAPL)	2011-12	2012-13	324.64	63.27	51.36	210.01	2944.85	-	1902.00	(-) 2066.34	984.09	273.28	27.77
	<b>Sector wise total</b>			<b>194.27</b>	<b>89.44</b>	<b>66.15</b>	<b>38.68</b>	<b>3491.42</b>	<b>-</b>	<b>2461.00</b>	<b>(-) 3102.75</b>	<b>723.78</b>	<b>128.12</b>	<b>17.70</b>
	<b>SERVICES</b>													
13.	Goa Electronic Limited (GEL)	2011-12	2011-12	77.44	8.90	5.35	63.19	990.86	Non Review	180.00	(-) 1990.61	1515.25	72.09	4.76
14.	Goa Tourism Development Corporation Limited (GTDCL)	2011-12	2012-13	(-) 446.95	-	180.54	(-) 627.49	2476.66	33.69	2264.69	(-) 952.31	2095.88	(-) 627.49	-
15.	Kadamba Transport Corporation Limited (KTCL)	2011-12	2012-13	(-) 772.90	617.65	448.99	(-) 1839.54	9348.20	(-) 19.54	5964.33	(-) 14787.34	(-) 4159.59	(-) 1221.89	-
	<b>Sector wise total</b>			<b>(-) 1442.41</b>	<b>626.55</b>	<b>634.88</b>	<b>(-) 2403.84</b>	<b>12815.72</b>		<b>8409.02</b>	<b>(-) 17730.26</b>	<b>(-) 548.46</b>	<b>(-) 1777.29</b>	
	<b>Total A</b>			<b>5719.91</b>	<b>2913.06</b>	<b>832.16</b>	<b>1974.72</b>	<b>54487.61</b>		<b>27026.63</b>	<b>(-) 9811.24</b>	<b>42261.80</b>	<b>4887.78</b>	<b>11.57</b>
	<b>(All sector wise working Government Companies)</b>													

**Audit Report for the year ended 31 March 2013**

Sl No	Sector and Name of the Company	Period of Accounts	Year in which finalised	Net Profit (+) / Loss (-)			Turnover	Impact of Accounts Comments #	Paid up Capital @/@@	Accumulated Profit (+)/ Loss (-)	Capital employed @	Return on capital employed \$	Percentage return on capital employed
				Net Profit/ Loss before Interest & Depreciation 5 (a)	Interest 5 (b)	Depreciation 5 (c)							
(1)	(2)	(3)	(4)										
<b>B.</b>	<b>Working Statutory Corporations</b>												
	<b>INFRASTRUCTURE</b>												
1.	Goa Industrial Development Corporation (GIDC)	2011-12	2012-13	702.57	-	1119.20	(-) 416.63	2447.42	-	3141.39	7760.11	(-) 416.63	-
2.	Goa Information Technology Development Corporation (GITDC)	First Accounts awaited		-	-	-	-	-	-	-	-	-	-
	<b>Sector wise total</b>			<b>702.57</b>	<b>-</b>	<b>1119.20</b>	<b>(-) 416.63</b>	<b>2447.42</b>	<b>-</b>	<b>3141.39</b>	<b>7760.11</b>	<b>(-) 416.63</b>	<b>-</b>
	<b>Total B</b>												
	<b>(All sector wise working Statutory corporations)</b>												
<b>C.</b>	<b>Non Working Government Companies</b>												
<b>D.</b>	<b>Non Working Statutory Corporations</b>												
	<b>Grand Total (A + B + C + D)</b>			<b>6422.48</b>	<b>2913.06</b>	<b>1951.36</b>	<b>1558.09</b>	<b>56935.03</b>	<b>-</b>	<b>30168.02</b>	<b>50021.91</b>	<b>4471.15</b>	<b>8.94</b>

$\phi$  Net profit/loss is net profit/loss before tax

# Impact of accounts comments include the net impact of comments of Statutory Auditors and CAG and is denoted by (+) for 'increase in profit/decrease in losses' and by (-) for 'decrease in profit/increase in losses'

@ Capital employed represents net fixed assets (including capital works-in-progress) plus working capital except in case of finance companies/corporations where the capital employed is worked out as a mean of aggregate of the opening and closing balances of paid up capital, free reserves, bonds, deposits and borrowings (including re finance)

\$ For calculating total return on capital employed, interest on borrowed funds is added to net profit/subtracted from the loss as disclosed in the profit and loss account

@/@ Paid up capital including Share application money

**APPENDIX-5.3**

(Referred to in paragraph 5.1.8)

**Statement showing Equity, Loans, Grants and Subsidy received/receivable, guarantees received, waiver of dues, loans written off and loans converted in to equity during the year and guarantee commitment at the end of March 2013**

(Figures in column 3(a) to 6(d) are ₹ in lakh)

Sl. No.	Sector and Name of the Company	Equity/ loans received out of budget during the year		Grants and subsidy received during the year				Guarantees received during the year and commitment at the end of the year @		Waiver of dues during the year								
		Equity	Loans	Central Government	State Government	Others	Total	Received	Commitment	Loans repayment written off	Loans converted into equity	Interest/ penal interest waived	Total					
														3 (a)	3 (b)	4 (a)	4 (b)	4 (c)
<b>A.</b>	<b>Working Government Companies</b>																	
	<b>AGRICULTURE &amp; ALLIED</b>																	
1.	Goa Forest Development Corporation Limited (GFDCL)	-	-	25.12	-	-	25.12	-	-	-	-	-	-	-	-	-	-	-
2.	Goa Meat Complex Limited (GMCL)	-	-	-	234.00	-	234.00	-	-	-	-	-	-	-	-	-	-	-
3.	Goa State Horticulture Corporation Limited (GSHCL)	-	-	-	(1774.33)	-	(1774.33)	-	-	-	-	-	-	-	-	-	-	-
	<b>Sector wise total</b>	-	-	<b>25.12</b>	<b>234.00</b>	-	<b>259.00</b>	-	-	-	-	-	-	-	-	-	-	-
	<b>FINANCE</b>																	
4.	EDC Limited (EDCL)	-	-	-	(148.50)	-	(148.50)	-	-	-	-	-	-	-	-	-	-	-
5.	Goa Handicraft Rural and Small Scale Industries Development Corporation Limited (GHRSSIDCL)	-	-	-	121.00	-	121.00	-	-	-	-	-	-	-	-	-	-	-
6.	Goa State Scheduled Caste and Other Backward Classes Finance and Development Corporation Limited (GSSCOBCFDCL)	166.00	438.93	-	10.00	-	10.00	-	-	-	-	-	-	-	-	-	-	-
7.	Goa State Schedule Tribes Finance and Development Corporation Limited (GSSTFDCL)	800.00	-	-	-	-	-	-	71.85	-	-	-	-	-	-	-	-	-
	<b>Sector wise total</b>	<b>966.00</b>	<b>438.93</b>	-	<b>131.00</b>	-	<b>131.00</b>	-	<b>71.85</b>	-	-	-	-	-	-	-	-	-







*Audit Report for the year ended 31 March 2013*

Sl. No.	Sector and Name of the Company	Equity/ loans received out of budget during the year		Grants and subsidy received during the year $\phi$			Guarantees received during the year and commitment at the end of the year @		Waiver of dues during the year				
		Equity	Loans	Central Government	State Government	Others	Total	Received	Commitment	Loans repayment written off	Loans converted into equity	Interest/ penal interest waived	Total
(1)	(2)	3 (a)	3 (b)	4 (a)	4 (b)	4 (c)	4 (d)	5 (a)	5 (b)	6 (a)	6 (b)	6 (c)	6 (d)
<b>B.</b>	<b>Working Statutory corporations</b>												
	<b>INFRASTRUCTURE</b>												
1.	Goa Industrial Development Corporation (GIDC)	-	-	-	-	-	-	-	-	-	-	-	-
2.	Goa Information Technology Development Corporation (GITDC)	-	-	-	-	-	-	-	-	-	-	-	-
	<b>Sector wise total</b>	-	-	-	-	-	-	-	-	-	-	-	-
	<b>Total B (All sector wise working Statutory corporations)</b>	-	-	-	-	-	-	-	-	-	-	-	-
<b>C.</b>	<b>Non-Working Government Companies</b>	-	-	-	-	-	-	-	-	-	-	-	-
<b>D.</b>	<b>Non-working Statutory Corporations</b>	-	-	-	-	-	-	-	-	-	-	-	-
	<b>Grand Total (A + B + C + D)</b>	<b>4016.00</b>	<b>438.93</b>	<b>201.54</b>	<b>12579.46</b> <b>(5264.65)</b>	<b>600.00</b>	<b>13381.00</b> <b>(5264.65)</b>	<b>4500.00</b>	<b>8071.85</b>	<b>-</b>	<b>-</b>	<b>-</b>	<b>-</b>

$\phi$  Figures in bracket indicate subsidy  
@ Figures indicate total guarantees at the end of the year

**APPENDIX-5.4**

(Referred to in paragraph 5.1.21)

**Statement showing investments made by State Government in PSUs whose accounts were in arrears as on 30 September 2013**  
(₹ in lakh)

Sl. No.	Name of PSUs	Year up to which Accounts finalised	Paid up capital as per latest finalised accounts	Investment made by State Government during the years for which accounts are in arrears				
				Year	Equity	Loans	Grants	Subsidy
1	2	3	4	5	6	7	8	9
<b>A</b>	<b>Working Companies</b>							
1.	Goa Meat Complex Limited (GMCL)	2009-10	61.82	2010-11	-	-	172.00	-
				2011-12	-	-	381.07	-
				2012-13	-	-	234.00	-
				2007-08	-	-	35.00	-
				2008-09	-	-	99.45	-
				2009-10	-	-	-	177.52
				2010-11	-	-	-	1017.89
				2011-12	-	-	250.00	1113.06
				2012-13	-	-	-	1774.33
				2003-04	5.00	-	-	-
				2004-05	5.00	-	-	0.29
				2005-06	5.00	-	-	0.26
				2006-07	5.00	-	-	-
				2007-08	5.00	-	-	-
				2008-09	1.66	-	25.00	-
				2009-10	1.66	-	25.00	-
				2010-11	5.00	-	25.00	-
				2011-12	250.00	-	30.00	-
				2012-13	166.00	438.93	10.00	-
3.	Goa State Scheduled Caste and Other Backward Classes Finance and Development Corporation Limited (GSSCOBCFDCL)	2002-03	263.43	2008-09	1.66	-	25.00	-
				2009-10	1.66	-	25.00	-
				2010-11	5.00	-	25.00	-
				2011-12	250.00	-	30.00	-
				2012-13	166.00	438.93	10.00	-

Sl. No.	Name of PSUs	Year up to which Accounts finalised	Paid up capital as per latest finalised accounts	Investment made by State Government during the years for which accounts are in arrears				
				Year	Equity	Loans	Grants	Subsidy
1	2	3	4	5	6	7	8	9
4.	Goa State Schedule Tribes Finance and Development Corporation Limited (GSSTFDCL)	2010-11	1560.00	2011-12	940.00	-	-	-
				2012-13	800.00	-	-	-
5.	Goa Handicraft Rural and Small Scale Industries Development Corporation Limited (GHRSSIDCL)	2011-12	800.00	2012-13	-	-	121.00	-
6.	Goa State Infrastructure Development Corporation Limited (GSIDCL)	2011-12	372.00	2012-13	-	-	9000.00	-
7.	Info Tech Corporation Limited (ITCGL)	2006-07	1633.47	2007-08 to 2011-12	-	-	-	-
				2012-13	-	-	114.46	-
8.	Sewerage and Infrastructural Development Corporation Limited (SIDCL)	2010-11	605.00	2011-12	50.00	-	2100.00	-
				2012-13	50.00	-	3100.00	-
9.	Kadamba Transport Corporation Limited (KTCL)	2011-12	5964.33	2012-13	3000.00	-	-	3341.82
<b>B.</b>	<b>Working Corporation</b>							
				2006-07	25.00	-	-	-
				2007-08	-	-	-	-
		First accounts awaited		2008-09	-	-	-	-
				2009-10	-	-	-	-
				2010-11	-	-	1.10	-
				2011-12	-	-	-	-
				2012-13	-	-	-	-
	<b>TOTAL</b>				<b>5314.32</b>	<b>438.93</b>	<b>15723.08</b>	<b>7425.17</b>

**APPENDIX-5.5**  
(Referred to in paragraph 5.1.13)  
**Statement showing financial position of Statutory Corporations**  
**(Goa Industrial Development Corporation)**

(₹ in crore)

<b>Financial Position</b>				
<b>Particulars</b>		<b>2009-10</b>	<b>2010-11</b>	<b>2011-12</b>
<b>LIABILITIES</b>				
<b>A</b>	Amount payable to Government	31.41	32.40	32.81
<b>B</b>	Reserves and Surplus	58.88	56.06	51.89
<b>C</b>	Deposits			
<b>i</b>	From Govt. for Schemes undertaken and/or on behalf of Govt. and others	0.01	0.01	0.01
<b>ii</b>	From private parties (for lease of plots etc.)	11.79	12.47	12.57
<b>D</b>	Current Liabilities, provisions and refunds	357.45	366.70	370.62
<b>Total</b>		<b>459.54</b>	<b>467.64</b>	<b>467.90</b>
<b>ASSETS</b>				
<b>A</b>	Fixed Assets	9.18	9.43	9.54
	Less : Depreciation (Cumulative)	5.73	6.34	6.78
	Net Fixed Assets	3.45	3.09	2.76
<b>B</b>	Work in progress	31.81	30.27	36.15
<b>C</b>	Development of Industrial areas/Estates	218.11	245.74	262.03
	Less : Depreciation	48.15	58.29	69.00
	Net development of Industrial areas/Estates	169.96	187.45	193.03
<b>D</b>	Investments	4.86	4.98	7.11
<b>E</b>	Cash at Bank/in hand	179.63	168.16	154.95
<b>F</b>	Other current assets, loans and advances	69.83	73.69	73.90
<b>Total</b>		<b>459.54</b>	<b>467.64</b>	<b>467.90</b>
<b>Capital employed*</b>		<b>85.44</b>	<b>83.48</b>	<b>77.60</b>

\*Capital employed represents Net Fixed Assets plus capital work-in progress plus net development of industrial areas/estates plus working capital less deposits

**APPENDIX– 5.6**

*(Referred to in paragraph 5.1.13)*

**Statement showing working results of Statutory Corporations  
(Goa Industrial Development Corporation)**

*(₹ in crore)*

<b>B.WORKING RESULTS</b>				
		<b>2009-10</b>	<b>2010-11</b>	<b>2011-12</b>
<b>A</b>	<b>Income</b>			
	a. Rent	5.19	5.25	4.06
	b. Interest	20.72	12.99	18.73
	c. Other charges	3.00	4.42	1.68
	<b>Total</b>	<b>28.91</b>	<b>22.66</b>	<b>24.47</b>
<b>B</b>	<b>Expenditure</b>			
	a. Executive/Administrative	9.96	11.30	14.08
	b. Depreciation	8.90	10.75	11.19
	c. Maintenance and repairs	2.76	3.39	3.37
	<b>Total</b>	<b>21.62</b>	<b>25.44</b>	<b>28.64</b>
	<b>Surplus (+) /Deficit (-)</b>	<b>(+)7.29</b>	<b>(-)2.78</b>	<b>(-)4.17</b>
	<b>Prior period Adjustments</b>	<b>(-)1.26</b>	<b>(-)0.04</b>	<b>0.01</b>
	<b>Net surplus (+)/Deficit (-) after prior period adjustment</b>	<b>(+)6.03</b>	<b>(-)2.82</b>	<b>(-)4.16</b>
	<b>Total interest charged to Income and Expenditure account</b>	<b>-</b>	<b>-</b>	<b>-</b>
	<b>Accumulated surplus</b>	<b>58.88</b>	<b>56.06</b>	<b>51.90</b>
	<b>Return on capital employed<sup>@</sup></b>	<b>6.03</b>	<b>(-)2.74</b>	<b>(-)4.16</b>
	<b>Percentage of return on capital employed</b>	<b>7.06</b>	<b>(-)3.28</b>	<b>(-)5.36</b>

<sup>@</sup> Return on capital employed represents net surplus after prior period adjustments plus total interest charges to Income and Expenditure Account

## APPENDIX – 5.7

(Referred to in Paragraph 5.1.30)

Summarised financial results of Departmentally managed commercial undertakings as per their latest proforma accounts

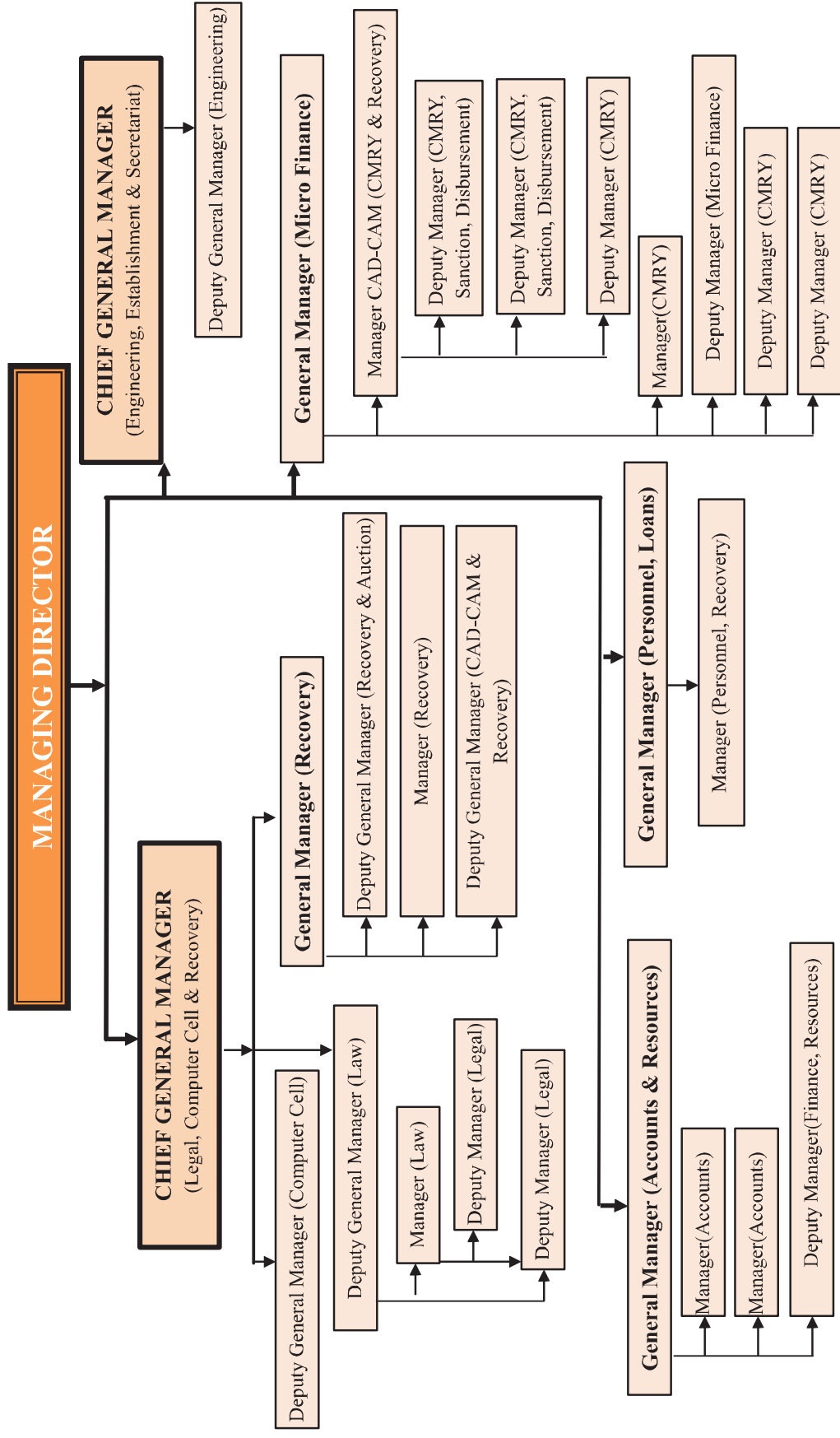
## I. Electricity Department

Sl. No.	Particulars	Year of commencement : 1962-63		
		Period of accounts		
		2004-05	2005-06	2006-07
		(₹ in Lakh)		
1.	Government capital	43569.24	53696.88	63987.11
2.	Block assets at depreciated cost	16136.00	17263.90	20152.89
3.	Cummulative depreciation	6323.11	7456.21	7795.66
4.	Net Profit	15580.80	9442.55	15226.73
5.	Interest on capital	-	-	-
6.	Total returns (5 + 4)	15580.80	9442.55	15226.73
7.	Percentage of returns on mean capital	39.77	19.41	25.88

## II. River Navigation Department

Sl. No.	Particulars	Year of commencement : 1965-66		
		Period of accounts		
		2003-04	2004-05	2005-06
		(₹ in Lakh)		
1.	Government capital	9257.46	9854.59	10828.55
2.	Block assets at depreciated cost	879.61	1061.28	928.64
3.	Depreciation	98.36	102.99	103.32
4.	Net Loss (-)	(-) 937.00	(-) 832.70	(-) 1052.95
5.	Interest on capital	39.91	40.68	41.30
6.	Total returns (5 + 4)	(-) 897.09	(-)792.02	(-) 1011.65
7.	Percentage of returns on mean capital	Nil	Nil	Nil

**APPENDIX – 5.8**  
*(Referred to in paragraph 5.2.2)*  
**ORGANISATIONAL CHART – EDC LIMITED**





## APPENDIX – 5.9

*(Referred to in paragraph 5.2.10)*

## Loan recovery position during the last five years

*(₹ in crore)*

Sl. No.	Particulars	2008-09	2009-10	2010-11	2011-12	2012-13
1.	Amount Due at the beginning of the year	330.71	335.31	331.65	340.41	338.82
2.	Current Demand (Including rescheduling of loan repayment)	104.09	79.60	87.56	86.94	97.19
3.	Amount Waived/Written off	20.56	6.77	2.02	11.28	2.49
4.	Net Recoverable during the year (1 + 2 - 3)	414.24	408.14	417.19	416.07	433.52
5.	Recovery of old dues	16.52	21.30	14.27	8.93	12.63
6.	Recovery of current demand	60.04	52.95	60.30	63.53	67.86
7.	Prepayments Received	2.36	2.25	2.22	4.78	5.21
8.	Total Recovery during the year	78.92	76.50	76.79	77.24	85.70
9.	Amount Due at the end of the year	335.32	331.64	340.40	338.83	347.82
10.	Percentage of recovery of old dues to amount due at the beginning of the year [ 5 to (1-3) ]	5.33%	6.48%	4.33%	2.71%	3.76%
11.	Percentage of recovery of current demand (6 to 2)	57.68%	66.52%	68.87%	73.07%	69.82%
12.	Percentage of recovery to net recoverable (8 to 4)	19.05%	18.74%	18.41%	18.56%	19.77%
13.	Targets of Recovery	79.00	80.00	80.00	83.40	86.05
14.	Percentage of target to net recoverable (13 to 4)	19.07%	19.60%	19.18%	20.04%	19.85%
15.	Achievement	78.29	74.98	75.46	78.35	84.78
16.	Percentage of achievement to targets (15 to 13)	98.30%	91.85%	92.68%	95.27%	97.45%
17.	OTS/Advance against sale of unit Recovered	-0.63	-1.51	-1.32	1.11	-0.92

**APPENDIX – 5.10**

*(Referred to in paragraph 5.2.12)*

**Details of delayed recovery of loans etc.**

Sl. No.	Name of Borrower	Loan declared doubtful		Delay in attachment/reference to DRO	Amount waived where loan settled under OTS (₹ in lakh)
		Date	Outstanding (₹ in lakh)		
1.	Enarai Vapour Lamp Ignitor Pvt. Ltd.	30/09/1992	4.28	October 1993, within a year of declaring the account as NPA.	-
2.	Costaio Morais	31/12/1998	2.88	January 2000, about 1 year after date of NPA.	-
3.	Phoenix	31/12/1989	3.35	Referred to DRO in August 1991, about 1½ years after date of NPA.	-
4.	Gracious Electroleads	30/09/1995	1.32	February 1997, about 1½ years after date of NPA.	-
5.	Sahadeo Laxman Patil	31/12/1998	5.93	May 2000, about 1½ years after date of NPA.	-
6.	Jaybee Laminations Pvt. Ltd.	30/06/2002	163.90	December 2003, about 1½ years after date of NPA.	74.23
7.	Trixila D'Souza Pereira	30/09/1993	1.35	January 1996, about 2¼ years after date of NPA.	-
8.	Anant Resistors Pvt. Ltd.	30/06/1998	6.62	February 2001, about 2½ years after date of NPA.	-
9.	Raj & Yash Alloys Pvt. Ltd.	31/12/1998	50.12	February 2001, about 3 years after date of NPA.	-
10.	Tejsneha Industries	31/12/1999	4.63	February 2003, about 3 years after date of NPA.	-
11.	Maruti Cement Products	30/09/1999	9.75	July 2003, about 3½ years after date of NPA.	-
12.	Mayur Cashew Factory	30/09/2000	91.62	February 2004, about 3½ years after date of NPA.	-
13.	Swan Enamels Products Pvt. Ltd.	30/06/1995	99.63	December 1998, about 3½ years after date of NPA.	20.04

Sl. No.	Name of Borrower	Loan declared doubtful		Delay in attachment/ reference to DRO	Amount waived where loan settled under OTS (₹ in lakh)
		Date	Outstanding (₹ in lakh)		
14.	Leisure Ventures	31/03/1999	25.72	February 2004, about 4 years after date of NPA.	-
15.	Kesar Pulp & Canning Pvt. Ltd.	30/06/1993	60.80	July 1997, about 4 years after date of NPA.	-
16.	Swan Distilleries Pvt. Ltd.	31/03/2003	525.32	July 2007, about 4 years after date of NPA.	-
17.	Decibells Electronics	30/09/1999	193.10	September 2003, about 4 years after date of NPA.	337.47
18.	Shivam Synthetics Pvt. Ltd.	30/06/1992	112.84	November 1996, about 4½ years after date of NPA.	142.39
19.	Ameya Systems & Printers	30/06/1992	1.14	July 1997, about 5 years after date of NPA.	-
20.	Shruti Informatics	30/06/1999	1.65	February 2005, about 5 years after date of NPA.	-
21.	Shubhdwar Engg. Pvt. Ltd.	30/09/1989	18.44	September 1994 (DRO), about 5 years after date of NPA.	-
22.	Penguin Alcohols Pvt. Ltd.	30/06/2003	278.15	February 2010, about 6 years after date of NPA.	-
23.	Aarnav Exports Pvt. Ltd.	31/07/1998	35.99	January 2005, about 7 years after date of NPA.	109.49
24.	Chamunda Cashew Industries	31/12/1989	2.60	February 1997, about 7 years after date of NPA.	-
25.	Perfect Dies	31/03/1987	7.69	December 1994 (DRO), about 7¾ years after date of NPA.	21.08
26.	Rahul Exports Pvt. Ltd.	30/09/1995	58.66	January 2004, about 8 years after date of NPA.	222.26
27.	Siddheshwar Lime Industry	30/09/1996	8.45	February 2005, about 8½ years after date of NPA.	-

Sl. No.	Name of Borrower	Loan declared doubtful		Delay in attachment/ reference to DRO	Amount waived, where loan settled under OTS (₹ in lakh)
		Date	Outstanding (₹ in lakh)		
28.	Hi-Tech Capsules Pvt. Ltd.	30/09/1995	35.20	April 2005, about 9 ½ years after date of NPA.	-
29.	Super Urethane Products Pvt. Ltd.	31/12/1993	50.28	December 2003, about 10 years after date of NPA.	238.11
30.	Vidya Furniture Works	31/03/1995	0.57	February 2005, about 10 years after date of NPA.	-
31.	Harichandra Enterprises	31/03/1992	2.17	October 2002, about 10 years after date of NPA.	-
32.	Manguesh Steel Foundry	31/03/1985	0.49	April 1995 (MSFC), about 10 years after date of NPA.	-
33.	Pure Water Beverages	31/12/2001	10.11	May 2013, about 11½ years after date of NPA.	-
34.	Elar Fashions Ltd.	30/06/1992	82.71	January 2004, about 11½ years after date of NPA.	-
35.	Shri Kamaxi Bakery	30/09/1995	1.59	February 2008, about 13 years after date of NPA.	-
36.	Pneumatic Tools Mfg. Co.	30/09/1986	7.08	April 1990 (DRO), about 13½ years after date of NPA.	196.45
37.	Aqua Bakers Pvt. Ltd.	30/09/1990	4.72	January 2006, about 15 years after date of NPA.	-
<b>Total</b>					<b>1361.52</b>

## APPENDIX – 5.11

*(Referred to in paragraph 5.2.13)***Details of loans sanctioned and disbursed without sufficient tangible security**

Sl. No.	Borrowing entities	₹ in lakh		Percentage of Security offered
		Loan availed	Value of tangible Security offered	
1.	Nilesh Wooden Arts	2.59	0.53	20.46
2.	Leisure Ventures	17.46	5.60	32.07
3.	Rajani Dresses	1.51	0.51	33.77
4.	Mayur Cashew Factory	1.62	75.58	46.65
5.	S. N. Plastics	20.40	11.15	54.66
6.	Supreme Industries	1.30	0.88	67.69
7.	Pure Water Beverages	23.38	17.15	73.35
8.	Gracious Electroleads	3.01	2.23	74.09
9.	Harichandra Enterprises	1.64	1.23	75.00
10.	Vidya Furniture Works	0.43	0.33	76.74
11.	Anant Resistors Pvt. Ltd.	73.00	57.87	79.27
12.	Aqua Bakers Pvt. Ltd.	31.50	25.42	80.70
13.	Shri Kamaxi Bakery	1.13	0.92	81.42
14.	Swan Enamels Products Pvt. Ltd.	84.12	75.68	89.97
15.	Jaybee Laminations Pvt. Ltd.	146.00	134.75	92.29
16.	Chamunda Cashew Industries	2.45	2.29	93.47
17.	Sahdev Laxman Patil	6.01	5.85	97.34
18.	Ameya System & Printers	8.26	8.08	97.82

**APPENDIX – 5.12**

*(Referred to in paragraph 5.2.15)*

**Details of cases where the value of security had deteriorated consequent to which EDC could not recover the full amount due**

*(₹ in lakh)*

Sl. No.	Name of Borrower	Security Value at		Deterioration	
		Sanction	Sale	Value	Percentage
1.	Chamunda Cashew Industries	4.94	0.01	4.93	99.80
2.	Rahul Exports Pvt. Ltd.	91.33	6.05	85.28	93.38
3.	Aarnav Exports Pvt. Ltd.	47.52	5.15	42.37	89.16
4.	Shri Kamaxi Bakery	1.54	0.17	1.37	88.96
5.	Pneumatic Tools Mfg. Co.	11.96	1.52	10.44	87.29
6.	Leisure Ventures	5.85	0.80	5.05	86.32
7.	Maruti Cement Products	14.23	2.40	11.83	83.13
8.	Harichandra Enterprises	2.12	0.40	1.72	81.13
9.	Sharvani Service Centre	2.21	0.45	1.76	79.64
10.	Gracious Electroleads	4.64	0.95	3.69	79.53
11.	Unex Exports Pvt. Ltd.	100.15	27.00	73.15	73.04
12.	Costa Morais	3.56	1.00	2.56	71.91
13.	Jaybee Laminations Pvt. Ltd.	194.70	64.00	130.70	67.13
14.	Goa Milk Foods & Allied Products	17.22	6.73	10.49	60.92
15.	Sahadeo Laxman Patil	5.98	2.35	3.63	60.70
16.	Decibells Electronics	220.00	91.00	129.00	58.64
17.	Swan Enamels Products Pvt. Ltd.	105.06	44.00	61.06	58.12
18.	Kesar Pulp & Canning Pvt. Ltd.	50.14	22.10	28.04	55.92
19.	Millennium Winery & Distilleries	40.89	20.00	20.89	51.09
20.	Raj & Yash Alloys Pvt. Ltd.	108.05	54.46	53.59	49.60
21.	Elar Fashions Ltd.	118.91	63.00	55.91	47.02
22.	Shivam Synthetics Pvt. Ltd.	128.75	69.86	58.89	45.74
23.	Trixila D'Souza Pereira	1.24	0.80	0.44	35.48
24.	Enarai Vapour Lamp Ignitor	5.85	3.96	1.89	32.31
25.	Phoenix	4.36	3.01	1.35	30.96
26.	Super Urethane	104.52	80.00	24.52	23.46

## APPENDIX – 5.13

*(Referred to in Paragraph 5.6)***Details of shortfall in power supply as compared to the guaranteed quantity**

<b>Month / Year</b>	<b>Short supply Units (kwh) worked out on hourly basis where supply is below 14000 units/hour*</b>	<b>Value @ ₹ 2.40/unit</b>
April 2011	1645970	3950328
May 2011	1310605	3145453
June 2011	1680809	4033941
July 2011	1239737	2975370
August 2011	1378226	3307742
September 2011	1310939	3146253
October 2011	1925472	4621132
November 2011	1204435	2890643
December 2011	3099065	7437757
January 2012	1321511	3171627
February 2012	4282887	10278928
March 2012	2970173	7128416
<b>Total</b>	<b>23369829</b>	<b>56087589</b>

\*14MW of Minimum Guaranteed supply equals 14,000 units of power per hour. Hourly data of power received in units was compared with minimum requirement of 14,000 units per hour.