

ANNEXURES

Annexure-1

Statement showing particulars of up to date paid up capital, loans outstanding and manpower as on 31 March 2012 in respect of Government companies¹ and Statutory corporations

(Referred to in paragraph 1.7)

(Figures in column 5(a) to 6(d) are ₹ in crore)

Sl. No.	Sector & Name of the PSU	Name of the Department	Month and year of incorporation	Paid-up Capital ²			Loans ³ outstanding at the close of 2011-12			Debt equity ratio for 2011-12 (Previous year)	Manpower (No. of employees)		
				State Government	Central Government	Others	State Government	Central Government	Others			Total	
1	2	3	4	5 (a)	5 (b)	5 (c)	5 (d)	6 (a)	6 (b)	6 (c)	6 (d)	7	8
A. Working Government Companies													
AGRICULTURE & ALLIED													
1	Madhya Pradesh State Agro Industries Development Corporation Limited	Farmer welfare and Agriculture Development	21 March 1969	2.10	1.20	--	3.30	7.59	--	--	7.59	2.3:1	385
2	Madhya Pradesh Rajya Van Vikas Nigam Limited	Forest	24 July 1975	37.93	1.39	--	39.32	--	--	--	--	--	1059
Sector wise total				40.03	2.59	--	42.62	7.59	--	--	7.59	0.18:1	1444
FINANCE													
3	M.P. Audyogik Kendra Vikas Nigam (Bhopal) Limited	Commerce & Industry	16 October 1987	--	--	1.35	1.35	--	--	--	--	--	263
4	M.P. Audyogik Kendra Vikas Nigam (Indore) Limited	--do--	16 November 1981	--	--	1.65	1.65	--	--	--	--	--	210
5	M.P. Audyogik Kendra Vikas Nigam (Jabalpur) Limited	--do--	16 November 1981	--	--	1.33	1.33	--	--	--	--	--	66
6	M.P. Audyogik Kendra Vikas Nigam (Rewa) Limited	--do--	16 November 1981	--	--	0.80	0.80	2.60	--	--	2.60	3.25:1 (1.36:1)	89
7	M.P. Audyogik Kendra Vikas Nigam (Ujjain) Limited	--do--	02 September 2008	--	--	10.00	10.00	--	--	--	--	--	39
8	Industrial Infrastructure Development Corporation (Gwalior) M.P. Limited	--do--	28 May 1985	--	--	0.75	0.75	--	--	--	--	--	151
9	Madhya Pradesh Pichhara Varg Tatha Alpankhyak Vitta Evam Vikas Nigam Limited	Pichhra Varg Kalyan	29 September 1994	7.05	--	--	7.05	0.89	--	41.90	42.79	6.07:1 (3.77:1)	20
10	Madhya Pradesh Adhvasi Vitta Evam Vikas Nigam Limited	Schedule Tribe Welfare	29 September 1994	24.67	5.38	--	30.05	--	--	16.93	16.93	0.56:1 (0.58:1)	--
11	The Provident Investment Company Limited	Finance	04 December 1926	0.49	--	0.01	0.50	--	--	--	--	--	19
12	Madhya Pradesh State Industrial Development Corporation Limited	Commerce & Industry	13 September 1965	81.09	--	--	81.09	119.61	--	511.61	631.22	7.78:1 (6.62:1)	91
Sector wise total				113.30	5.38	15.89	134.57	123.10	--	570.44	693.54	5.15:1 (4.35:1)	948

Report on Public Sector Undertakings (General, Social, Economic and Revenue Sectors) for the year ended 31 March 2012

Sl. No.	Sector & Name of the PSU	Name of the Department	Month and year of incorporation	Paid-up Capital ²				Loans ³ outstanding at the close of 2011-12				Debt equity ratio for 2011-12 (Previous year)	Manpower (No. of employees)
				State Government	Central Government	Others	Total	State Government	Central Government	Others	Total		
1	2	3	4	5 (a)	5 (b)	5 (c)	5 (d)	6 (a)	6 (b)	6 (c)	6 (d)	7	8
INFRASTRUCTURE													
13.	Madhya Pradesh Police Housing Corporation Limited	Home (Police)	31 March 1981	4.58	--	--	4.58	--	--	10.00	10.00	2.18:1	142
14.	Madhya Pradesh Road Development Corporation Limited	Public Works	14 July 2004	20.00	--	--	20.00	--	--	--	--	--	153
15	Narmada Basin Projects Company Limited	Narmada Valley Development	27 October 2011	5.00	--	--	5.00	--	--	--	--	--	--
Sector wise total				29.58	--	--	29.58	--	10.00	10.00	10.00	0.34:1	295
MANUFACTURING													
16.	Pithampur Auto Cluster Limited	Commerce & Industry	27 December 2004	--	--	11.98	11.98	--	--	--	--	--	2
17.	Madhya Pradesh State Electronics Development Corporation Limited	--do--	18 November 1983	21.91	--	--	21.91	17.12	--	--	17.12	0.78:1 (0.78:1)	60
18.	Crystal I.T. Park Indore Limited.	--do--	16 September 2004	--	--	0.05	0.05	--	--	--	--	--	--
19.	Madhya Pradesh Hasiba Ship Evam Hath Kargha Vikas Nigam Limited	Gram Udyog	28 November 1981	0.02	0.52	0.72	1.26	0.35	--	1.26	1.61	1.28:1 (0.18:1)	280
20.	Madhya Pradesh State Mining Corporation Limited	Mineral Resources	19 January 1962	2.20	--	--	2.20	--	--	--	--	--	386
21.	MP AMRL (Semaria) Coal Company Limited	--do--	19 November 2009	--	--	1.00	1.00	--	--	--	--	--	--
22.	MP AMRL (Morga) Coal Company Limited	--do--	19 November 2009	--	--	1.00	1.00	--	--	--	--	--	--
23.	MP AMRL (Bichampur) Coal Company Limited	--do--	19 November 2009	--	--	1.00	1.00	--	--	--	--	--	--
24.	MP AMRL (Marki Bakra) Coal Company Limited	--do--	19 November 2009	--	--	1.00	1.00	--	--	--	--	--	--
25.	MP Jaypee Coal Limited	--do--	14 May 2009	--	--	10.00	10.00	--	--	7.56	7.56	0.76:1	--
26.	MP Monnet Mining Company Limited	--do--	16 November 2009	--	--	2.00	2.00	--	--	0.17	0.17	0.09:1	1
27.	MP Jay Pee Minerals Limited	--do--	21 February 2006	--	--	21.43	21.43	--	--	144.52	144.52	6.74:1	--
28.	MP Jay Pee Coal fields Limited	--do--	4 January 2010	--	--	1.00	1.00	--	--	12.49	12.49	12.49:1	--
29.	M.P. Sainik Coal Mining Pvt. Ltd	--do--	22 July 2005	--	--	29.98	29.98	--	--	--	--	--	15
Sector wise Total				24.13	0.52	81.16	105.81	17.47	166.00	183.47	1.73:1 (0.13:1)	744	

Sl. No.	Sector & Name of the PSU	Name of the Department	Month and year of incorporation	Paid-up Capital ²				Loans ³ outstanding at the close of 2011-12				Debt equity ratio for 2011-12 (Previous year)	Manpower (No. of employees)
				State Government	Central Government	Others	Total	State Government	Central Government	Others	Total		
1	2	3	4	5 (a)	5 (b)	5 (c)	5 (d)	6 (a)	6 (b)	6 (c)	6 (d)	7	8
POWER													
30	Madhya Pradesh Urja Vikas Nigam Limited	Energy Department	25 August 1982	0.69	--	--	0.69	--	--	--	--	--	215
31.	Madhya Pradesh Power Transmission Company Limited	--do--	22 November 2001	2184.44	--	--	2184.44	1490.64	--	343.22	1833.86	0.84:1 (1.04:1)	5365
32.	Madhya Pradesh Poorv Kshetra Vidyut Vitaran Company Limited	--do--	31 May 2002	1391.44	--	--	1391.44	5420.33	--	199.47	5619.80	4.04:1 (2.31:1)	13761
33.	Madhya Pradesh Paschim Kshetra Vidyut Vitaran Company Limited	--do--	31 May 2002	1630.91	0	0	1630.91	1003.36	--	444.49	1447.85	0.89:1 (0.76:1)	11930
34.	Madhya Pradesh Madhya Kshetra Vidyut Vitaran Company Limited	--do--	31 May 2002	1436.39	--	--	1436.39	1717.62	--	1427.76	3145.38	2.19:1 (0.77:1)	11145
35.	Madhya Pradesh Power Generating Company Limited	--do--	22 November 2001	3924.50	--	185.00	4109.50	9.37	--	6038.64	6048.01	1.47:1 (1.20:1)	5934
36.	Shahpura Thermal Power Company Limited	--do--	05 February 2007	--	--	0.05	0.05	--	--	2.26	2.26	45.2:1 (23.4:1)	4
37.	Madhya Pradesh Power Trading Company Limited ⁴	--do--	02 May 2006	20.00	--	--	20.00	--	--	201.47	201.47	10.07:1	120
38.	Dada Dhuni Wale Khandwa Power Limited.	--do--	25 February 2010	--	--	45.00	45.00	--	--	--	--	--	7
39.	Bansagar Thermal Power Company Limited	--do--	09 June 2011	--	--	0.05	0.05	15.00	--	--	15.00	300:1	17
40.	Shri Singaji Power Project Limited	--do--	12 October 2011	--	--	0.05	0.05	--	--	--	--	--	--
Sector wise Total				10588.37	--	230.15	10818.52	10754.02	--	8667.20	19421.22	1.80:1 (1.18:1)	48498
SERVICE													
41.	M.P.Trade and Investment Facilitation Corporation Limited	Commerce & Industry	14 February 1977	0.80	--	--	0.80	--	--	--	--	--	24
42.	Madhya Pradesh Laghu Udyog Nigam Limited	--do--	28 December 1961	2.68	0.15	--	2.83	--	--	--	--	--	338
43.	SEZ Indore Limited	--do--	20 February 2003	--	--	26.97	26.97	--	--	--	--	--	3

Report on Public Sector Undertakings (General, Social, Economic and Revenue Sectors) for the year ended 31 March 2012

Sl. No.	Sector & Name of the PSU	Name of the Department	Month and year of incorporation	Paid-up Capital ²				Loans ³ outstanding at the close of 2011-12				Debt equity ratio for 2011-12 (Previous year)	Manpower (No. of employees)
				State Government	Central Government	Others	Total	State Government	Central Government	Others	Total		
1	2	3	4	5 (a)	5 (b)	5 (c)	5 (d)	6 (a)	6 (b)	6 (c)	6 (d)	7	8
44.	Madhya Pradesh State Civil Supplies Corporation Limited	Food, Civil Supplies & Consumer Protection	03 April 1974	8.47	--	--	8.47	--	--	--	--	--	958
45.	Madhya Pradesh State Tourism Development Corporation Limited	Tourism	24 May 1978	24.97	--	--	24.97	--	--	--	--	--	1871
46.	Indore City Transport Services Limited	Urban Development	01 December 2005	--	--	0.25	0.25	--	--	--	--	--	7
47.	Jabalpur City Transport Services Limited	--do--	31 August 2006	0.25	--	--	0.25	--	--	--	--	--	4
48.	Bhopal City Link Limited	--do--	25 July 2006	0.30	--	--	0.30	--	--	--	--	--	4
49.	Ujjain City Transport Services Limited	--do--	05 June 2008	--	--	--	--	--	--	--	--	--	--
50.	Katni City Transport Services Limited	--do--	10 September 2009	--	--	0.15	0.15	--	--	--	--	--	--
51.	Madhya Pradesh Knowledge City (Ujjain) Limited	Education	18 March 2010	--	--	1.00	1.00	--	--	--	--	--	--
Sector wise Total				37.22	0.15	28.62	65.99	--	--	--	--	--	3209
Total A (All Sector wise working Government companies)				10832.63	8.64	355.82	11197.09	10902.18	--	9413.64	20315.82	1.81:1 (1:20:1)	55138
B. Working Statutory corporations													
AGRICULTURE & ALLIED													
1	Madhya Pradesh Warehousing and Logistics Corporation	Food, Civil Supplies & Consumer Protection	19 February 1958	4.28	--	3.78	8.06	--	--	1.66	1.66	0.21:1 (0.61:1)	1426
Sector wise Total				4.28	--	3.78	8.06	--	--	1.66	1.66	0.21:1 (0.61:1)	1426

Sl. No.	Sector & Name of the PSU	Name of the Department	Month and year of incorporation	Paid-up Capital ²				Loans ³ outstanding at the close of 2011-12				Debt equity ratio for 2011-12 (Previous year)	Manpower (No. of employees)	
				State Government	Central Government	Others	Total	State Government	Central Government	Others	Total			
1	2	3	4	5 (a)	5 (b)	5 (c)	5 (d)	6 (a)	6 (b)	6 (c)	6 (d)	7	8	
FINANCE														
2.	Madhya Pradesh Financial Corporation	Finance	30 June 1955	354.08	--	2.06	356.14	--	---	502.19	502.19	1.41:1 (1.49:1)	208	
Sector wise Total				354.08	--	2.06	356.14	--	---	502.19	502.19	1.41:1 (1.49:1)	208	
POWER														
3.	Madhya Pradesh State Electricity Board ⁵	Energy	01 April 1957/ 1 January, 2001	79.61	---	---	79.61	--	---	--	---	--	726	
Sector wise Total				79.61	---	---	79.61	--	---	--	---	---	--	726
SERVICES														
4.	Madhya Pradesh Road Transport Corporation	Transport	21 May 1962	109.96	31.85	--	141.81	573.35	--	143.49	716.84	5.05:1 (5.05:1)	300	
Sector wise Total				109.96	31.85	--	141.81	573.35	--	143.49	716.84	5.05:1 (5.05:1)	300	
Total B (All sector wise working Statutory corporations)				547.93	31.85	5.84	585.62	573.35	--	647.34	1220.69	2.08:1 (2.14:1)	2660	
Grand Total (A+B)				11330.56	40.49	361.66	11782.71	11475.53	--	10060.98	21536.51	3.90:1 (1.25:1)	57798	
C. Non working Government companies⁶														
AGRICULTURE & ALLIED														
1.	Madhya Pradesh Corporation Limited	Irrigation	13 July 1976	5.92	--	--	5.92	--	--	--	--	--	Under liquidation	

Report on Public Sector Undertakings (General, Social, Economic and Revenue Sectors) for the year ended 31 March 2012

Sl. No.	Sector & Name of the PSU	Name of the Department	Month and year of incorporation	Paid-up Capital ²				Loans ³ outstanding at the close of 2011-12				Debt equity ratio for 2011-12 (Previous year)	Manpower (No. of employees)
				State Government	Central Government	Others	Total	State Government	Central Government	Others	Total		
1	2	3	4	5 (a)	5 (b)	5 (c)	5 (d)	6 (a)	6 (b)	6 (c)	6 (d)	7	8
2.	Madhya Pradesh State Dairy Development Corporation Limited	Agriculture	22 March 1975	--	--	--	--	--	--	--	--	--	Under liquidation
Sector wise Total				5.92	--	--	5.92	--	--	--	--	--	--
FINANCE													
3.	Madhya Pradesh Film Development Corporation Limited	Culture	16 December 1981	1.04	--	--	1.04	--	--	--	--	--	Under liquidation
4.	Madhya Pradesh Panchayati Raj Vitta Evam Gramin Vikas Nigam Limited	Panchayat and Rural Development	30 March 1981	0.16	--	--	0.16	--	--	--	--	--	Under liquidation
Sector wise Total				1.20	--	--	1.20	--	--	--	--	--	--
INFRASTRUCTURE													
5.	Madhya Pradesh State Industries Corporation Limited	Commerce and Industry	11 April 1961	13.14	--	--	13.14	--	--	--	--	--	Closed
6.	Madhya Pradesh Rajya Setu Nirman Nigam Limited	Public Works	04 October 1978	5.00	--	--	5.00	--	--	--	--	--	Under liquidation
Sector wise Total				18.14	--	--	18.14	--	--	--	--	--	--
MANUFACTURING													
7	Optel Telecommunication Limited	Commerce and Industry	23 December 1988	--	--	23.97	23.97	17.12	--	29.48	46.60	1.94:1 (1.94:1)	Under liquidation
8.	Madhya Pradesh State Textile Corporation Limited	--do--	27 November 1970	6.86	--	--	6.86	86.74	--	1.10	87.84	12.80:1 (12.80:1)	4
9.	Madhya Pradesh Vidhyut Yantra Limited	--do--	3 December 1974	--	--	1.50	1.50	--	--	--	--	--	Under liquidation

Sl. No.	Sector & Name of the PSU	Name of the Department	Month and year of incorporation	Paid-up Capital ²				Loans ³ outstanding at the close of 2011-12				Debt equity ratio for 2011-12 (Previous year)	Manpower (No. of employees)
				State Government	Central Government	Others	Total	State Government	Central Government	Others	Total		
1	2	3	4	5 (a)	5 (b)	5 (c)	5 (d)	6 (a)	6 (b)	6 (c)	6 (d)	7	8
	Sector wise total			6.86	--	25.47	32.33	103.86	--	30.58	134.44	5.28:1 (3.97:1)	
	Total C (All Sector wise non working Government Companies)			32.12	--	25.47	57.59	103.86	--	30.58	134.44	2.33:1 (2.87:1)	4
	Grand Total (A+B+C)			11412.68	40.49	387.13	11840.30	11579.39	--	10091.56	21670.95	1.83:1 (1.26:1)	57802

¹ Above includes, S. No.C-1 to C-9 (Non-working companies).

² Paid up Capital up includes Share Application Money.

³ Loans outstanding at the close of 2011-12 represent long term loans only.

⁴M.P. Power Trading Company Ltd at has been renamed as M.P. Power Management Company Limited with effect from 10 April 2012.

⁵Madhya Pradesh State Electricity Board shall wound up without liquidation as per GoMP notification dated 26 April 2012.

⁶Details of non functional companies at Sl. No. C-1, C-2, C-3, C-4, C-7, and C-9 have been adopted from Audit Report 2010-11 as no information was received from the companies.

Annexure 2

Summarised financial results of Government companies and Statutory corporations for the latest year for which accounts were finalised

(Referred to in paragraph 1.15)

(Figures in column 5(a) to 11 are ₹ in crore)

Sl. No.	Sector & Name of the company	Period of Accounts	Year in which finalised	Net Profit (+)/ Loss (-)			Turnover	Impact of Accounts Comments ⁷	Paid up Capital	Accumulated Profit (+)/ Loss (-)	Capital employed	Return on capital employed ⁸	Percentage return on capital employed	
				Net Profit/ Interest & Depreciation	Interest	Depreciation								Net Profit/ Loss
(1)	(2)	(3)	(4)	5(a)	5(b)	5(c)	(6)	(7)	(8)	(9)	(10)	(11)	(12)	
A. Working Government companies														
AGRICULTURE & ALLIED														
1.	Madhya Pradesh State Agro Industries Development Corporation Limited	2009-10	2011-12	9.02	0.19	0.34	8.49	520.84	(-) 2.71	3.30	(-) 2.96	9.36	8.68	92.74
2.	Madhya Pradesh Rajya Van Vikas Nigam Limited	2010-11	2011-12	20.65	--	0.34	20.31	59.88	--	39.32	65.24	118.72	20.31	17.11
Sector wise total				29.67	0.19	0.68	28.80	580.72	(-) 2.71	42.62	62.28	128.08	28.99	22.63
FINANCE														
3.	M.P. Audyogik Kendra Vikas Nigam (Bhopal) Limited	2011-12	2012-13	3.73	--	0.19	3.54	13.78	(-) 1.70	1.35	8.63	9.98	3.54	35.47
4.	M.P. Audyogik Kendra Vikas Nigam (Indore) Limited	2010-11	2012-13	10.79	0.11	2.12	8.56	30.20	(-) 1.07	1.65	28.22	121.39	8.67	7.14
5.	M.P. Audyogik Kendra Vikas Nigam (Jabalpur) Limited	2010-11	2011-12	0.54	--	--	0.54	1.45	(-) 0.03	1.33	8.48	9.81	0.54	5.50
6.	M.P. Audyogik Kendra Vikas Nigam (Rewa) Limited	2010-11	2011-12	1.98	0.14	--	1.84	2.60	--	0.80	3.14	6.54	1.98	30.28
7.	M.P. Audyogik Kendra Vikas Nigam (Ujjain) Limited	2011-12	2012-13	2.23	--	0.30	1.93	2.78	--	10.00	3.67	13.67	1.93	14.12
8.	Industrial Infrastructure Development Corporation (Gwalior) Limited	2011-12	2012-13	0.50	--	0.11	0.39	4.70	(-) 13.43	0.75	4.29	5.83	0.39	6.69
9.	Madhya Pradesh Pichhara Vang Tatha Apsankhyak Vita Evam Vikas Nigam Limited	2007-08	2012-13	2.04	2.14	0.01	(-) 0.10	2.41	0.19	7.05	0.03	49.88	2.03	4.07

Sl. No.	Sector & Name of the company	Period of Accounts	Year in which finalised	Net Profit (+)/ Loss (-)				Turnover	Impact of Accounts Comments ⁷	Paid up Capital	Accumulated Profit (+)/ Loss (-)	Capital employed	Return on capital employed ⁸	Percentage return on capital employed
				Net Loss before Interest & Depreciation	5(a)	5(b)	Interest							
(1)	(2)	(3)	(4)	5(a)	5(b)	5(c)	5(d)	(6)	(7)	(8)	(9)	(10)	(11)	(12)
10.	Madhya Pradesh Adivasi Vitta Evam Vikas Nigam Limited	2003-04	2011-12	3.37	1.33	0.10	1.94	4.38	(-) 0.36	18.36	2.51	20.07	3.27	16.29
11.	The Provident Investment Company Limited	2009-10	2011-12	5.66	--	0.04	5.62	4.67	--	0.50	20.03	22.54	5.62	24.93
12.	Madhya Pradesh State Industries Development Corporation Limited	2010-11	2012-13	5.34	0.07	0.18	5.09	7.86	(-) 407.02	81.09	(-) 601.54	712.30	5.16	0.72
Sector wise Total				36.18	3.79	3.05	29.34	74.83	(-) 423.42	122.88	(-) 522.54	972.01	33.13	3.41
INFRASTRUCTURE														
13.	Madhya Pradesh Police Housing Corporation Limited	2010-11	2011-12	1.36	--	--	1.36	69.90	--	4.58	29.95	35.89	1.36	3.79
14.	Madhya Pradesh Road Development Corporation Limited	2011-12	2012-13	26.57	--	0.41	26.16	43.22	--	20.00	65.35	85.29	26.16	30.67
15.	Narmada Basin Projects Corporation Limited	First A/c not received												
Sector wise Total				27.93	--	0.41	27.52	113.12	--	24.58	95.30	121.18	27.52	22.71
MANUFACTURING														
16.	Prithampur Auto Cluster Pvt. Limited	2011-12	2012-13	2.94	--	6.15	(-) 3.21	4.31	--	11.98	(-) 7.89	47.78	(-) 3.21	0.00
17.	Madhya Pradesh State Electronics Development Corporation Limited	2010-11	2012-13	1.85	--	0.33	1.52	8.56	(-) 36.29	21.91	1.75	39.80	1.52	3.82
18.	Crystal I.T. Park Indore Limited	2010-11	2011-12	--	--	--	--	--	--	0.05	--	--	--	--
19.	Madhya Pradesh Hastha Ship Evam HathKargha Vikas Nigam Limited	2008-09	2012-13	0.26	0.08	0.21	(-) 0.03	18.07	--	1.26	0.61	36.37	0.05	0.14
20.	Madhya Pradesh State Mining Corporation Limited	2010-11	2011-12	33.18	--	0.21	32.97	95.50	--	2.20	89.66	75.61	32.97	43.61
21.	MP AMRL (Semaria) Coal Company Limited ^A	2011-12	2012-13	(-) 0.01	--	--	(-) 0.01	0.00	--	1.00	(-) 0.37	0.59	(-) 0.01	0.00
22.	MP AMRL (Morgat) Coal Company Limited	2011-12	2012-13	0.00	--	--	0.00	0.00	--	1.00	(-) 0.29	0.67	--	--
23.	MP AMRL (Bicharpur) Coal Company Limited	2011-12	2012-13	(-) 0.04	--	--	(-) 0.04	0.00	--	1.00	(-) 0.33	0.63	(-) 0.04	0.00

Report on Public Sector Undertakings (General, Social, Economic and Revenue Sectors) for the year ended 31 March 2012

Sl. No.	Sector & Name of the company	Period of Accounts	Year in which finalised	Net Profit (+)/ Loss (-)				Turnover	Impact of Accounts Comments ⁷	Paid up Capital	Accumulated Profit (+)/ Loss (-)	Capital employed	Return on capital employed ⁸	Percentage return on capital employed
				Net Loss Interest Depreciation	Net Profit before Interest & Depreciation	Interest	Depreciation							
(1)	(2)	(3)	(4)	5(a)	5(b)	5(c)	5(d)	(6)	(7)	(8)	(9)	(10)	(11)	(12)
24.	MP AMRL (Marki Bakra) Coal Company Limited	2011-12	2012-13	(-) 0.01	--	--	(-) 0.01	0.00	--	1.00	(-) 0.31	0.65	(-) 0.01	0.00
25.	MP Jaypee Coal Limited	2011-12	2012-13	(-) 0.08	--	--	(-) 0.08	--	--	10.00	(-) 0.08	17.47	(-) 0.08	0.00
26.	MP Monnet Mining Company Limited	2011-12	2012-13	(-) 0.34	--	--	(-) 0.34	--	--	2.00	(-) 0.34	1.83	(-) 0.34	0.00
27.	MP Jay Pee Minerals Limited	2011-12	2012-13	0.76	---	0.82	(-) 0.06	--	--	21.43	(-) 1.23	161.08	(-) 0.06	0.00
28.	MP Jay Pee Coal fields Limited	2011-12	2012-13	(-) 0.29	--	--	(-) 0.29	--	--	1.00	(-) 0.38	13.12	(-) 0.29	0.00
29.	M.P. Samik Coal Mining Pvt. Limited	2011-12	2012-13	(-) 0.02	--	--	(-) 0.02	--	--	29.98	(-) 0.68	29.42	(-) 0.02	0.00
Sector wise Total				38.20	0.08	7.72	30.40	126.44	(-) 36.29	105.81	80.12	425.02	30.48	7.17
POWER														
30.	Madhya Pradesh Uija Vikas Nigam Limited	2010-11	2011-12	(-) 5.16	--	0.05	(-) 5.21	0.06	0.28	0.69	0.12	24.68	(-) 5.21	0.00
31.	Madhya Pradesh Power Transmission Company Limited	2011-12	2012-13	419.28	155.60	266.78	(-) 3.10	1717.27	--	2184.44	(-) 138.62	3190.12	152.50	4.78
32.	Madhya Pradesh Poorv Kshetra Vidyut Vitran Company Limited	2011-12	2012-13	(-) 923.02	126.80	117.01	(-) 1166.83	3753.65	--	1391.44	(-) 4552.33	1855.95	(-) 1040.03	0.00
33.	Madhya Pradesh Paschim Kshetra Vidyut Vitran Company Limited	2011-12	2012-13	(-) 324.87	182.57	116.70	(-) 624.14	5485.02	--	1630.91	(-) 3617.40	4370.24	(-) 441.57	0.00
34.	Madhya Pradesh Madhya Kshetra Vidyut Vitran Company Limited	2010-11	2011-12	(-) 145.94	355.79	108.71	(-) 610.44	2845.69	--	1436.39	(-) 3279.63	3095.01	(-) 254.65	0.00
35.	Madhya Pradesh Power Generating Company Limited	2011-12	2012-13	575.69	279.64	346.88	(-) 50.83	4838.03	39.70	4109.50	(-) 11348.57	8876.69	228.81	2.58
36.	Shahpura Thermal Power Company Limited*	2011-12	2012-13	--	--	--	--	--	--	0.05	0.01	--	--	--
37.	Madhya Pradesh Power Trading Company Limited	2011-12	2012-13	56.08	65.15	0.05	(-) 9.12	12859.95	--	20.00	--	(-) 74.73	56.03	0.00
38.	Dada Dhuni Wale Khandwa Power Limited.	2011-12	2012-13	0.80	--	--	0.80	0.80	--	45.00	0.25	7.33	0.80	10.91
39.	Bansagar Thermal Power Company Limited	First A/c not received												
40.	Shri Singaji Thermal	2011-12	2012-13	--	--	--	--	--	--	0.05	--	--	--	--

Sl. No.	Sector & Name of the company	Period of Accounts	Year in which finalised	Net Profit (+)/ Loss (-)			Turnover	Impact of Accounts Comments ⁷	Paid up Capital	Accumulated Profit (+)/ Loss (-)	Capital employed	Return on capital employed ⁸	Percentage return on capital employed
				Net Profit before Interest & Depreciation	Interest	Depreciation							
(1)	(2)	(3)	(4)	5(a)	5(b)	5(c)	5(d)	(8)	(9)	(10)	(11)	(12)	
	Power Company Limited												
	Sector wise Total			(-) 347.94	1165.55	956.18	(-) 2468.87	10818.47	(-) 13186.38	21345.29	(-) 1303.32	--	
SERVICES													
41.	M.P. Trade and Investment Facilitation Corporation Limited	2010-11	2011-12	0.74	--	0.06	0.68	0.80	7.45	23.19	0.68	2.93	
42.	Madhya Pradesh Laghu Udyog Nigam Limited	2010-11	2012-13	23.89	--	1.27	22.62	2.83	62.58	64.97	22.62	34.82	
43.	SEZ Indore Limited (SEZIL)	2010-11	2012-13	12.69	1.21	1.05	10.43	26.97	22.15	59.92	11.64	19.43	
44.	Madhya Pradesh State Civil Supplies Corporation Limited	2010-11	2011-12	368.90	365.87	0.83	2.20	8.47	140.10	3176.51	368.07	11.59	
45.	Madhya Pradesh State Tourism Development Corporation Limited	2009-10	2011-12	3.14	0.06	2.84	0.24	24.97	(-) 4.34	285.46	0.30	0.11	
46.	Indore City Transport Services Limited		First Account not received										
47.	Jabalpur City Transport Services Limited	2010-11	2011-12	0.12	---	0.02	0.10	0.17	0.40	0.65	0.10	15.38	
48.	Bhopal City Link Limited		First Account not received										
49.	Ujjain City Transport Services Limited		First Account not received										
50.	Katni City Transport Services Limited	2010-11	2011-12	--	--	--	--	0.15	(-) 0.01	0.13	--	--	
51.	Madhya Pradesh Vikramaditya Knowledge City (Ujjain) Limited	2011-12	2012-13	0.08	--	--	0.08	1.00	0.04	1.00	0.08	8.00	
	Sector wise Total			409.56	367.14	6.07	36.35	65.44	228.37	3611.83	403.49	11.17	
	Total A (All sector wise working Government companies)			194.40	1536.75	974.11	(-) 2316.46	11179.80	(-) 13872.85	26603.41	(-) 779.71	--	
B. Working Statutory corporation													
AGRICULTURE & ALLIED													
1.	Madhya Pradesh Warehousing and Logistics Corporation	2010-11	2011-12	33.75	0.69	6.10	26.96	8.06	--	186.35	27.65	14.84	
	Sector wise total			33.75	0.69	6.10	26.96	8.06	0.52	186.35	27.65	14.84	

Report on Public Sector Undertakings (General, Social, Economic and Revenue Sectors) for the year ended 31 March 2012

Sl. No.	Sector & Name of the company	Period of Accounts	Year in which finalised	Net Profit (+)/ Loss (-)			Turnover	Impact of Accounts Comments ⁷	Paid up Capital	Accumulated Profit (+)/ Loss (-)	Capital employed	Return on capital employed ⁸	Percentage return on capital employed	
				Net Profit/ Interest & Depreciation	Net Profit/ Interest & Depreciation	Net Profit/ Interest & Depreciation								5(d)
(1)	(2)	(3)	(4)	(5)	(6)	(7)	(8)	(9)	(10)	(11)	(12)			
FINANCE														
2.	Madhya Pradesh Financial Corporation	2011-12	2012-13	53.24	48.15	--	5.09	66.42	--	356.14	(-) 233.66	891.46	53.24	5.97
Sector wise total				53.24	48.15	--	5.09	66.42	--	356.14	(-) 233.66	891.46	53.24	5.97
POWER														
3.	Madhya Pradesh State Electricity Board	2011-12	2012-13	6.31	3.86	1.83	0.62	47.57	--	79.61	--	110.74	4.48	4.05
Sector wise total				6.31	3.86	1.83	0.62	47.57	--	79.61	--	110.74	4.48	4.05
SERVICE														
4.	Madhya Pradesh Road Transport Corporation	2007-08	2008-09	1.08	10.10	4.60	(-) 13.62	210.05	--	141.81	(-) 1024.52	(-) 144.80	(-) 3.52	0.00
Sector wise total				1.08	10.10	4.60	(-) 13.62	210.05	--	141.81	(-) 1024.52	(-) 144.80	(-) 3.52	0.00
Total B (All sector wise working statutory corporations)				94.38	62.80	12.53	19.05	424.00	0.52	585.62	(-) 1178.93	1043.75	81.85	7.84
Grand Total (A+B)				288.78	1599.55	986.64	(-) 2297.41	37949.25	(-) 592.15	11765.42	(-) 15051.78	27647.16	(-) 697.86	--
C. Non working Government companies														
AGRICULTURE & ALLIED														
1.	Madhya Pradesh Irrigation Corporation Limited	2003-10	2010-11	0.04	--	--	0.04	Under liquidation	--	5.92	(-) 6.33	(-) 0.36	0.04	0.00
2.	Madhya Pradesh Dairy Development Corporation Limited	2001-02	2002-03	--	--	--	--	Under liquidation	--	--	--	--	--	--
Sector wise total				0.04	--	--	0.04	---	--	5.92	(-) 6.33	(-) 0.36	0.04	--
FINANCE														
3.	Madhya Pradesh Development Corporation Limited	2009-10	2010-11	--	--	--	--	Under liquidation	--	1.04	--	1.02	--	--
4.	Madhya Pradesh Panchayati Raj Evam Gramin Vikas Nigam Limited	2005-06	2006-07	0.03	--	--	0.03	Under liquidation	--	0.16	0.02	0.16	0.03	18.75
Sector wise total				0.03	--	--	0.03	---	--	1.20	0.02	1.18	0.03	18.75
INFRASTRUCTURE														
5.	Madhya Pradesh Industries Corporation Limited	2007-08	2010-11	0.09	---	0.02	0.07	1.42	--	13.14	(-) 48.41	7.80	0.07	0.90

Sl. No.	Sector & Name of the company	Period of Accounts	Year in which finalised	Net Profit (+)/ Loss (-)			Turnover	Impact of Accounts Comments ⁷	Paid up Capital	Accumulated Profit (+)/ Loss (-)	Capital employed	Return on capital employed ⁸	Percentage return on capital employed	
				Net Loss before Interest & Depreciation	Interest	Depreciation								Net Profit/ Loss
(1)	(2)	(3)	(4)	5(a)	5(b)	5(c)	5(d)	(6)	(7)	(8)	(9)	(10)	(11)	(12)
6.	Madhya Pradesh Seta Nirman Nigam Limited	1989-90	1993-94	(-) 1.13	--	--	(-) 1.13	Under liquidation	--	5.00	(-) 2.15	2.87	(-) 1.13	0.00
Sector wise total				(-) 1.04	--	0.02	(-) 1.06	1.42	--	18.14	(-) 50.56	10.67	(-) 1.06	--
MANUFACTURING														
7.	Optel Telecommunication Limited	2009-10	2010-11	(-) 27.07	2.14	--	(-) 29.21	Under liquidation	--	23.97	(-) 13.76	(-) 24.48	(-) 27.07	110.58
8.	Madhya Pradesh State Textile Corporation Limited	2006-07	2010-11	(-) 4.88	--	0.02	(-) 4.90	0.66	--	6.86	(-) 107.90	(-) 11.89	(-) 4.90	--
9.	Madhya Pradesh Vidyut Yantra Limited	--	--	--	--	--	--	Under liquidation	--	1.50	0.04	--	--	--
Sector wise total				(-) 31.95	2.14	0.02	(-) 34.11	--	---	32.33	(-) 239.62	(-) 36.37	31.97	--
Total C (All sector wise non working Government companies)				(-) 32.92	2.14	0.04	(-) 35.10	2.08	---	57.59	(-) 296.49	(-) 24.88	(-) 32.96	0.00
Grand Total (A+B+C)				255.86	1601.69	986.68	(-) 2332.51	37951.33	(-) 592.15	11823.01	(-) 15348.27	27622.28	(-) 730.82	0.00

• For Working companies at S.No. A-5, 10, 11,13, 18, 20, 44, 47 and B-1, B-4 data from Annual Report 2010-11 has been adopted, as Companies did not furnished any latest finalised accounts.

⁷ Impact of accounts comments include the net impact of comments of Statutory Auditors and CAG and is denoted by (+) increase in net profit/ decrease in loss and (-) decrease in profit/ increase in losses

⁸ Return on capital employed has been worked out by adding profit and interest charged to profit and loss account.

Annexure-3

Statement showing equity, loans, grants and subsidy received/receivable, guarantees received, waiver of dues, loans written off and loans converted into equity during the year and guarantee commitment at the end of March 2012

(Referred to in paragraph 1.10)

(Figures in column 3(a) to 6(d) are ₹ in crore)

Sl. No.	Sector & Name of the company	Equity/loans received out of budget during the year		Grants and subsidy received during the year				Guarantees received during the year and commitment at the end of the year		Waiver of dues during the year			
		Equity	Loans	Central Government	State Government	Others	Total	Received	Commitment	Loans repayment written off	Loans converted into equity	Interest/penal interest waived	Total
1	2	3(a)	3(b)	4(a)	4(b)	4(c)	4(d)	5(a)	5(b)	6(a)	6(b)	6(c)	6(d)
A.	Working Government companies												
1.	Madhya Pradesh State Agro Industries Development Corporation Limited	--	--	8.79	0.21	--	9.00	--	--	--	--	--	--
2.	Madhya Pradesh Rajya Van Vikas Nigam Limited	--	--	---	4.00	--	4.00	--	--	--	--	--	--
3.	M.P. Audyogik Kendra Vikas Nigam (Indore) Limited	--	--	6.16	--	--	6.16	--	--	--	--	--	--
4.	M.P. Audyogik Kendra Vikas Nigam (Ujjain) Limited	--	--	1.50	--	--	1.50	--	--	--	--	--	--
5.	M.P. Audyogik Kendra Vikas Nigam (Jabalpur) Limited	--	--	5.01	5.51	--	10.52	--	--	--	--	--	--
6.	Industrial Development Corporation (Gwalior) Limited	--	--	2.07	1.00	--	3.07	--	--	--	--	--	--
7.	Madhya Pradesh Pichhara Varg Tatha Alpsankhyak Vitta Evam Vikas Nigam Limited	0.50	--	--	0.20	--	0.20	0.01	31.18	--	--	--	--
8.	Madhya Pradesh Adivasi Vitta Evam Vikas Nigam Limited	1.00	--	---	2.00	---	2.00	51.00	--	--	--	--	--
9.	Madhya Pradesh State Industries Development Corporation Limited	--	--	22.16	--	--	22.16	0.58	--	--	--	--	--
10.	M.P. Police Housing Corporation Limited	--	--	--	--	--	--	198.80	--	--	--	--	--

Sl. No.	Sector & Name of the Company	Equity/loans received out of budget during the year		Grants and subsidy received during the year				Guarantees received during the year and commitment at the end of the year				Waiver of dues during the year			
		Equity	Loans	Central Government	State Government	Others	Total	Received	Commitment	Loans repayment written off	Loans converted into equity	Interest/penal interest waived	Total		
1	2	3(a)	3(b)	4(a)	4(b)	4(c)	4(d)	5(a)	5(b)	6(a)	6(b)	6(c)	6(d)		
11.	Madhya Pradesh Road Development Corporation Limited	--	--	--	605.92	--	605.92	--	--	--	--	--	--		
12.	Narmada Basin Projects Company Limited	5.00	--	--	--	--	--	--	--	--	--	--	--		
13.	Madhya Pradesh State Electronic Development Corporation Limited	--	--	7.48	19.43	--	26.91	--	--	--	--	--	--		
14.	Madhya Pradesh Urja Vikas Nigam Limited	--	--	21.84	12.36	--	34.20	--	--	--	--	--	--		
15.	Madhya Pradesh Power Transmission Company Limited	30.00	148.23	--	--	--	--	--	131.86	--	--	--	--		
16.	Madhya Pradesh Poorv Kshetra Viyut Vitaran Company Limited	196.99	1450.88	--	724.48	--	724.48	149.06	65.64	--	--	--	--		
17.	Madhya Pradesh Paschim Kshetra Viyut Vitaran Company Limited	407.86	47.13	--	798.95	--	798.95	108.00	195.17	3216.83	--	419.89	3636.72		
18.	Madhya Pradesh Madhya Kshetra Viyut Vitaran Company Limited	118.60	82.25	--	642.32	--	642.32	--	490.87	--	--	--	--		
19.	Madhya Pradesh Power Generating Company Limited	382.43	2.50	--	--	--	--	1821.70	1821.70	--	--	--	--		
20.	Bansagar Thermal Power Company Limited	--	15.00	--	--	--	--	--	--	--	--	--	--		
21.	Madhya Pradesh State Civil Supplies Corporation Limited	--	--	2639.86	341.80	--	2981.67	--	--	--	--	--	--		
22.	Madhya Pradesh State Tourism Development Corporation Limited	--	--	41.32	64.30	--	105.62	--	--	--	--	--	--		
Total A (All Working Government companies)		1142.38	1745.99	2756.19	3222.48	--	5978.67	2329.15	2736.42	3216.83	--	419.89	3636.72		
B	Working Statutory corporations														
1.	Madhya Pradesh Warehousing and Logistics Corporation	--	--	2.70	--	--	2.70	--	--	--	--	--	--		
2.	Madhya Pradesh Financial Corporation	5.00	--	--	--	--	--	100.00	523.00	--	--	--	--		
Total B (All Working Statutory corporations)		5.00	0.00	2.70	--	--	2.70	100.00	523.00	--	--	--	--		
Grand Total (A+B)		1147.38	1745.99	2758.89	3222.48	--	5981.37	2429.15	3259.42	3216.83	--	419.89	3636.72		

Annexure-4
**Statement showing investment made by the State Government in working PSUs,
whose accounts are in arrears**

(Referred to in paragraph 1.25)

(₹ in crore)

Sl. No.	Name of PSU	Year upto which accounts finalised	Paid up capital as per latest finalised accounts	Arrear years in which investment received	Investment made by State Government during the year in which accounts are in arrears			
					Equity	Loan	Subsidy	Grants
1	2	3	4	5	6	7	8	9
1	Madhya Pradesh State Agro Industries Development Corporation Limited, Bhopal.	2009-10	3.30	Upto 2010-11	--	--	0.20	--
				2011-12			0.21	
2	Madhya Pradesh Rajya Van Vikas Nigam Limited, Bhopal.	2010-11	39.32	2011-12	--	--	--	4.00
3	Madhya Pradesh Audyogik Kendra Vikas (Jabalpur) Limited, Jabalpur	2010-11	1.33	2011-12	--	--	5.51	--
4	Madhya Pradesh Pichhara Varg Tatha Alp-Sankhayak Vitta Aivam Vikas Nigam, Bhopal.	2007-08	7.05	Upto 2010-11	1.50	--	--	0.24
				2011-12	0.50	--	--	0.20
5	Madhya Pradesh Adivasi Vitta Aivam Vikas Nigam, Bhopal.	2003-04	30.05	Upto 2010-11	4.50	--	--	8.80
				2011-12	1.00	--	--	2.00
6	Madhya Pradesh State Electronics Development Corporation Limited, Bhopal.	2010-11	21.91	2011-12	--	--	19.43	--
7	Madhya Pradesh Hastashilp Aivam Hathkargha Vikas Nigam Limited, Bhopal.	2008-09	1.26	Upto 2010-11	--	--	--	25.24
				2011-12	--	--	--	--
8	Madhya Pradesh Urja Vikas Nigam Limited, Bhopal	2010-11	0.69	2011-12	--	--	12.36	--
9	Madhya Pradesh Madhya Kshetra Vidyut Vitran Company Limited	2010-11	1436.39	2011-12	118.60	82.25	543.32	99.00
10	Madhya Pradesh State Civil Supplies Corporation Limited	2010-11	8.47	2011-12	--	--	341.80	--
11	Madhya Pradesh State Tourism Development Corporation Limited, Bhopal	2009-10	24.97	Upto 2010-11	--	--	29.02	27.78
				2011-12			43.66	20.64
Total					126.10	82.25	995.41	187.90
Grand Total					1391.66			

Annexure-5

Statement showing financial position of Statutory corporations

(Referred to in paragraph 1.15)

(₹ in crore)

Working Statutory corporations			
1. Madhya Pradesh State Electricity Board			
	2009-10	2010-11	2011-12
A. Liabilities			
Equity capital	1131.68	79.61	79.61
Contribution/ Grant or Subsidy receivable from towards cost of capital	0.00	2.31	2.31
Loans from Government	83.76	---	--
Other long-term loans (including bonds)	0.00	95.16	96.04
Reserves and surplus	2.34	0.02	0.03
Current liabilities and provisions	85.10	87.84	74.39
Total A	1302.88	264.94	252.38
B. Assets			
Gross fixed assets	72.86	73.96	74.10
Less : Depreciation	47.86	49.38	51.21
Net fixed assets	25.00	24.58	22.89
Capital works-in-progress	1.15	1.15	1.15
Current assets	1199.44	161.07	161.09
Subsidy receivable from Government	0.00	0.00	1.10
Investments	77.29	77.04	66.15
Total B	1302.88	264.94	252.38
(C) Capital employed⁹	1140.88	98.86	110.74
2. Madhya Pradesh Road Transport Corporation¹⁰			
	2005-06	2006-07	2007-08
A. Liabilities			
Capital (including capital loan and equity capital)	141.81	141.81	141.81
Borrowings (Government)	17.50	574.12	573.35
(Others)	466.24	13.79	143.49
Funds ¹¹	422.57	27.43	21.09
Trade dues and other current liabilities (including provisions)	597.75	920.01	873.52
Total A	1645.87	1677.16	1753.26
B. Assets			
Gross Block	460.74	460.77	457.50
Less : Depreciation	64.07	69.49	74.59
Net fixed assets	396.67	391.28	382.91
Capital works-in-progress (including cost of chassis)	1.74	1.92	1.16
Investments	0.02	0.02	0.02
Current assets, loans and advances	380.14	273.04	344.65
Accumulated loss	867.30	1010.90	1024.52
Total B	1645.87	1677.16	1753.26
C. Capital employed¹²	180.80	(-)253.77	(-)144.80

⁹ Capital employed represents net fixed assets (including capital works-in-progress) plus working capital. While working out working capital, the element of investments have been excluded from current assets.

¹⁰ Figures adopted from the Audit Report 2010-11 as Corporation did not furnish the latest accounts.

¹¹ Excluding depreciation funds.

¹² Capital employed represents net fixed assets (including capital works-in-progress) plus working capital.

3. Madhya Pradesh Financial Corporation			
	2009-10	2010-11	2011-12
A. Liabilities			
Paid-up capital	346.14	351.14	356.14
Reserve fund and other reserves and surplus	38.82	38.73	35.63
Borrowings (Including interest due):			
(i) Bonds and debentures	63.33	108.17	112.67
(ii) Fixed deposits			
(iii) Industrial Development Bank of India & Small Industries Development Bank of India	334.60	330.50	319.80
(iv) Others (including State Government)	50.00	84.87	69.72
Other Liabilities and provisions	38.38	42.61	52.69
Total A	871.27	956.02	946.65
B. Assets			
Cash and Bank balances	16.59	46.64	0.73
Investments	187.05	187.05	187.05
Loans and advances	405.75	461.99	502.16
Net fixed assets	8.23	8.06	7.86
Other assets	13.98	14.61	15.19
Miscellaneous expenditure	239.67	237.66	233.66
Total B	871.27	956.02	946.65
C. Capital employed¹³	800.93	839.92	891.46
4. Madhya Pradesh Warehousing and Logistics Corporation¹⁴			
	2008-09	2009-10	2010-11
A. Liabilities			
Paid-up capital	8.06	1.50	1.50
Advances against Capital/Pending share Allotment	---	6.56	6.56
Reserves and surplus	97.66	102.47	117.13
Borrowings (Including interest due):			
Government	--	--	--
Others	3.31	4.75	5.05
Trade dues and current liabilities (including provisions)	41.64	69.39	97.28
Total A	150.67	184.67	227.52
B. Assets			
Gross Block	147.94	151.39	163.41
Less : Depreciation	52.97	58.00	63.98
Net Fixed assets	94.97	93.39	99.43
Capital works-in-progress	5.45	8.79	17.03
Current assets, loan and advances	50.25	82.49	111.06
Total B	150.67	184.67	227.52
Capital employed¹⁵	125.55	110.52	186.35

¹³ Capital employed represents the mean of the aggregate of opening and closing balances of paid-up capital, loans in lieu of capital, seed money, debentures, reserves (other than those which have been funded specifically and backed by investments outside), bonds, deposits and borrowings (including refinance).

¹⁴ Figures adopted from the last year Audit Report as the Corporation did not furnish the latest accounts.

¹⁵ Capital employed represents net fixed assets (including capital works-in-progress) plus working capital.

Annexure-6

Statement showing working results of Statutory corporations

(Referred to in paragraph 1.15)

(`in crore)

A. Working Statutory corporations				
1.	Madhya Pradesh State Electricity Board	2009-10	2010-11	2011-12
	Particulars			
1	(a) Revenue receipts	77.06	73.42	47.56
	(b) Subsidy/Subvention from Government	0.00	0.00	0.00
	Total	77.06	73.42	47.56
2	Revenue expenditure (net of expenses capitalised) including write-off of intangible assets but excluding depreciation and interest	76.16	43.64	41.25
3	Gross Surplus (+)/Deficit(-) for the year (1-2)	0.90	29.78	6.31
4	Adjustments relating to previous years (Credit)	(-0.90)	--	--
5	Final Gross Surplus (+)/Deficit(-) for the year (3+4)	0.00	29.78	6.31
6	Appropriations :			
	(a) Depreciation (less capitalised)	1.51	1.51	1.83
	(b) Interest on Government loans	0.00	0.00	0.00
	(c) Interest on others, bonds, advance, etc. and finance charges	32.22	20.27	3.86
	(d) Total interest on loans & finance charges (b+c)	32.22	20.27	3.86
	(e) Less :- Interest capitalized	0.00	0.00	0.00
	(f) Net interest charged to revenue (d-e)	32.22	20.27	3.86
	(g) Total appropriations (a+f)	33.73	21.78	5.69
7	Surplus(+)/deficit(-)before accounting for subsidy from State Government {5-6(g)-1(b)}	0.00	8.00	0.62
8	Net Surplus(+)/Deficit (-) {5-6(g)}	(-)33.73	8.00	0.62
9	Total return on capital employed¹⁶	33.12	28.26	4.48
10	Percentage of return on capital employed	2.90	28.58	4.05
11.	Capital employed	1140.48	98.86	110.74
2. Madhya Pradesh Road Transport Corporation ¹⁷				
		2005-06	2006-07	2007-08
1	Operating			
	(a) Revenue	218.34	204.97	205.41
	(b) Expenditure	294.38	340.86	202.16
	(c) Surplus(+)/Deficit(-)	(-)76.04	(-)135.89	3.25
2	Non-operating			
	(a) Revenue	5.42	2.15	4.64
	(b) Expenditure	15.44	9.86	21.51
	(c) Surplus(+)/Deficit(-)	(-)10.02	(-)7.71	(-)16.87
3	Total			
	(a) Revenue	223.76	207.12	210.05
	(b) Expenditure	309.82	350.72	223.67
	(c) Net Profit(+)/Loss(-)	(-)86.06	(-)143.60	(-)13.62
4	Interest on capital and loans	11.00	9.05	10.10
5	Total return on Capital employed¹⁸	(-)75.06	(-)134.55	(-)3.52

¹⁶ Total return on capital employed represents net Surplus/ Deficit plus total interest charged to Profit and Loss Account (less interest capitalized).

¹⁷ Figures adopted from the Audit Report (2010-11) as the Corporation did not furnished the latest finalised annual accounts

¹⁸ Total return on capital employed represents net Surplus/ Deficit plus total interest charged to Profit and Loss Account (less interest capitalized).

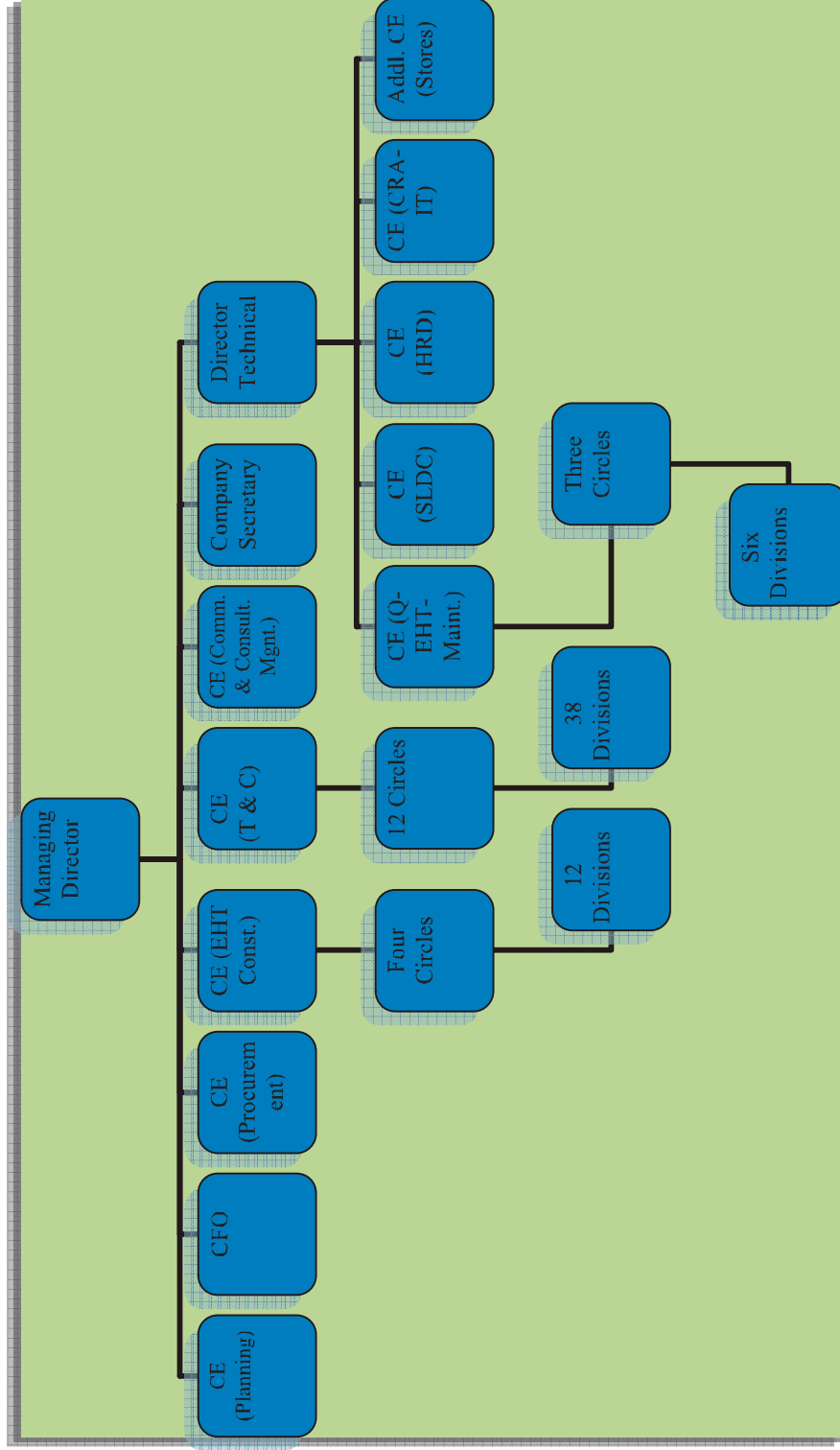
3. Madhya Pradesh Financial Corporation		2009-10	2010-11	2011-12
1	Income			
	(a) Interest on loans	50.29	54.16	64.43
	(b) Other Income	1.30	1.00	1.99
	Total-1	51.59	55.16	66.42
2	Expenses			
	(a) Interest on long-term loans	40.26	39.77	48.15
	(b) Provision for standard assets	0.14	0.49	0.27
	(c) Other expenses	9.60	11.85	12.72
	(d) Depreciation	0.21	0.23	0.20
	Total-2	50.21	52.34	61.34
3	Profit/Loss before tax (1-2)	(+)1.38	2.82	5.08
4	Provision for tax	(-)0.26	0.62	1.08
5	Other appropriations	(+)0.02	0.19	0.01
6	Amount available for dividend	1.10	2.01	4.01
7	Dividend declared	--	---	--
8	Total return on capital employed	41.64	41.78	53.24
9	Percentage of return on capital employed	5.21	4.97	5.97
4. Madhya Pradesh Warehousing and Logistics Corporation ¹⁹		2008-09	2009-10	2010-11
1	Income			
2	(a) Warehousing charges	46.34	61.64	89.65
	(b) Other Income	2.63	4.89	10.31
	Total	48.97	66.53	99.96
3	Expenses			
	(a) Establishment charges	24.50	33.01	37.29
	(b) Other expenses	16.09	15.41	21.76
	Total	40.59	48.42	59.05
4	Profit (+)/Loss(-) before tax	8.38	18.11	40.91
5	Other appropriations	8.08	17.81	40.61
6	Amount available for dividend	0.30	0.30	0.30
7	Dividend for the year	0.30	0.30	0.30
8	Total return on capital employed	4.99	12.14	27.65
9	Percentage of return on capital employed	3.97	10.53	14.84

¹⁹ Figures adopted from the Audit Report (2010-11) as the Corporation did not furnish the latest finalised Accounts.

Annexure-7

Organisation Chart of Madhya Pradesh Power Transmission Company Limited, Jabalpur

(Referred to in Paragraph 2.1.2)



Annexure- 8

**Statement showing voltage-wise capacity additions planned, actual additions and shortfall during five years up to 2011-12
(Referred to in paragraph 2.1.11)**

Sl. No.	Description	2007-08	2008-09	2009-10	2010-11	2011-12
(1)	(2)	(3)	(4)	(5)	(6)	(7)
400 kV EHT SSs (Numbers)						
1	At the beginning of the year	4	4	4	4	5
2	Additions Planned for the year	0	0	1	1	0
3	Actual Additions during the year	0	0	0	1	0
4	At the end of the year (1+3)	4	4	4	5	5
5	Shortfall/Excess (-) in Additions (2-3)	0	0	1	0	0
400 kV Transformers Capacity (MVA)						
1	At the beginning of the year	3885	3885	3885	3885	4515
2	Additions/ augmentation Planned for the year	0	0	315	630	0
3	Actual Additions during the year	0	0	0	630	0
4	Capacity at the end of the year (1+3)	3885	3885	3885	4515	4515
5	Shortfall/Excess (-) in Additions/ Augmentation (2-3)	0	0	315	0	0
400 kV Lines (CKM)						
1	At the beginning of the year	2314.31	2314.31	2343.01	2343.01	2343.01
2	Additions Planned for the year	29.4	28.7	0	0	0
3	Actual Additions during the year	0	28.7	0	0	0
4	At the end of the year (1+3)	2314.31	2343.01	2343.01	2343.01	2343.01
5	Shortfall/Surplus (-) in Additions (2-3)	29.4	0	0	0	0
220 kV EHT SSs (Numbers)						
1	At the beginning of the year	37	38	44	49	53
2	Additions Planned for the year	4	8	4	4	1
3	Actual Additions during the year	1	6	5	4	2
4	At the end of the year (1+3)	38	44	49	53	55
5	Shortfall/Excess (-) in Additions (2-3)	3	2	-1	0	-1
220 kV Transformers Capacity (MVA)						
1	At the beginning of the year	9650	10230	11970	13610	14350
2	Additions/ augmentation Planned for the year	1000	1800	1580	740	760
3	Actual Additions during the year	580	1740	1640	740	760
4	Capacity at the end of the year (1+3)	10230	11970	13610	14350	15110
5	Shortfall/Excess (-) in Additions/ Augmentation (2-3)	420	60	60	0	0
220 kV Lines (CKM)						
1	At the beginning of the year	7709.12	8173.87	9045.41	9810.17	10859.5
2	Additions Planned for the year	956.23	874.26	537.6	1005.93	338.66
3	Actual Additions during the year	464.75	871.54	764.76	1049.33	228.92
4	At the end of the year (1+3)	8173.87	9045.41	9810.17	10859.5	11088.42
5	Shortfall/Surplus (-) in Additions (2-3)	491.48	2.72	-227.16	-43.4	109.74
132 kV EHT SSs (Numbers)						
1	At the beginning of the year	157	162	168	174	181
2	Additions Planned for the year	7	8	10	12	8
3	Actual Additions during the year	5	6	6	7	6

4	At the end of the year (1+3)	162	168	174	181	187
5	Shortfall/Excess (-) in Additions (2-3)	2	2	4	5	2
132 kV Transformers Capacity (MVA)						
1	At the beginning of the year	11315.5	11879.5	13202.5	14524.5	15347
2	Additions/ augmentation Planned for the year	640	1153	1069	663	686
3	Actual Additions during the year	564	1323	1322	822.5	572
4	Capacity at the end of the year (1+3)	11879.5	13202.5	14524.5	15347	15919
5	Shortfall/Excess (-) in Additions/ Augmentation (2-3)	76	-170	-253	-159.5	114
132 kV Lines (CKM)						
1	At the beginning of the year	10864.7	11118.17	11514.27	12411.01	13208.41
2	Additions Planned for the year	438.26	390.04	974.40	931.60	409.80
3	Actual Additions during the year	253.47	396.10	896.74	797.40	420.83
4	At the end of the year (1+3)	11118.17	11514.27	12411.01	13208.41	13629.24
5	Shortfall/Surplus (-) in Additions (2-3)	184.79	-6.06	77.66	134.2	-11.03

Annexure- 9

**Statement showing the Financial Position of Madhya Pradesh Power Transmission Company Limited for five years ending 2011-12
(Referred to in paragraph 2.1.34)**

(₹ in crore)

Particulars	2007-08	2008-09	2009-10	2010-11	2011-12
A. Liabilities					
Paid up Capital	1149.13	1324.53	2110.76	2154.44	2184.44
Reserves & surplus(including Capital Grants)	0.00	0.00	0.00	0.00	0.00
Consumer Contribution Received	0.00	0.00	0.00	139.84	169.14
Deferred tax	0.00	0.00	88.73	106.81	113.90
Borrowings(Loan Funds)	2016.95	2073.37	2174.66	2500.08	2713.31
Current Liabilities & Provisions(CL)	338.25	294.92	433.85	238.66	290.38
Terminal Benefit Liability	66.96	103.27	196.44	236.39	286.95
Total	3571.29	3796.09	5004.44	5376.22	5758.12
B. Assets					
Gross Block	3575.99	3954.12	4544.60	5023.64	5260.08
Less: Depreciation	1682.44	1877.18	2091.65	2336.78	2598.49
Net Fixed Assets(NFA)	1893.55	2076.94	2452.95	2686.86	2661.59
Capital Work-in-progress(CWIP)	480.23	721.73	691.13	418.59	594.46
Investments	0.00	0.00	0.00	0.00	0.00
Current Assets, Loans & Advances(CA)	1187.74	982.99	1750.30	2142.35	2363.45
Misc. Expenditure not Written Off	0.03	0.02	0.00	0.00	0.00
Net Loss(C/F)	9.74	14.41	110.06	128.42	138.62
Assets not in use	0.00	0.00	0.00	0.00	0.00
Total	3571.29	3796.09	5004.44	5376.22	5758.12
Debt equity ratio	1.76:1	1.57:1	1.03:1	1.16:1	1.24:1
Profit Before Tax	-39.94	-5.26	-6.81	-0.29	-3.10
Interest (net after capitalised)	202.31	70.46	138.94	338.34	155.52
Total return(PBIT)	162.37	65.20	132.13	338.05	152.42
Capital Employed	3223.27	3486.74	4460.53	5009.14	5329.12
Percentage Return on Capital Employed	5.04	1.87	2.96	6.75	2.86

Capital Employed= Net Fixed Assets plus Capital Work-in-Progress plus Current Assets minus Current Liabilities Percentage

Return on Capital Employed= Total Return / Capital Employed x 100

Annexure- 10

Statement showing the Working Results of Madhya Pradesh Power Transmission Company
Limited for five years ending 2011-12
(Referred to in paragraph 2.1.35)

(₹ in crore)

SL. NO.	Description	2007-08	2008-09	2009-10	2010-11	2011-12
1	Income					
	Revenue from wheeling of power (Transmission Charges & SLDC charges)	792.4641	745.9005	1090.9976	1437.0198	1717.2771
	Other income (includes interest, supervision charges & misc. receipt)	12.3874	72.9546	8.5349	17.2589	8.8131
	Total Income	804.8516	818.8551	1099.5325	1454.2787	1726.0902
2	Transmission (in MU)					
a)	Installed Capacity(MW)	7220	7483	8200	8489	8809
b)	Power received from state generation units (MU)	19136	19440	19619	19366	22345
c)	Power received regional grid (MU)	16012	14840	14727	18314	19830
d)	Loss in Transmission (MU)	1438	1402	1439	1409	1483
	Net Power Transmitted (MU)	33710	32878	32907	36271	40692
3	Expenditure					
a)	Fixed cost:					
(i)	Employees cost	123.8045	140.4138	225.1985	173.2325	191.7900
(ii)	Administrative & General Expenses	17.1428	19.5479	24.4648	19.1115	34.3736
(iii)	Depreciation	177.5954	194.7445	216.6277	248.0420	266.7776
(iv)	Interest & Finance Charges (Net after capitalisation)	202.3083	70.4607	138.9435	338.3407	155.5233
(v)	Terminal benefit cost	308.0186	337.4510	482.5750	642.7902	708.4093
	Total Fixed Cost	828.8696	762.6179	1087.8095	1421.5168	1356.8738
b)	Variable (Repair & Maintenance)	15.9178	21.5826	18.5365	33.0532	45.0167
	Total Cost(a+b)	844.7873	784.2005	1106.3460	1454.5701	1401.8905
4	Realisation / Unit (₹ per Unit)	0.2351	0.2269	0.3315	0.3962	0.4220
5	Fixed cost/Unit (₹ per Unit)	0.2459	0.2320	0.3306	0.3919	0.3334
6	Variable cost/Unit (₹ per Unit)	0.0047	0.0066	0.0056	0.0091	0.0111
7	Total Cost Unit (₹ per Unit) (5 + 6)	0.2506	0.2385	0.3362	0.4010	0.3445
8	Contribution (₹ per Unit) (4-6)	0.2304	0.2203	0.3259	0.3871	0.4109
9	Profit(+)/ Loss(-) (4-7) (₹ per Unit)	(0.0155)	(0.0116)	(0.0047)	(0.0048)	0.0775

Annexure 11

Performance of Marketing offices of Madhya Pradesh State Tourism Development

Corporation Limited

(Referred to in paragraph 2.2.20)

(₹ in crore)

Year	Total Business	Business through Travel Agents (TA)	MOs own Business	Percentage of business through TAs to total business	Total expenditure incurred by MO excluding TAs commission	Percentage of total expenditure to total business	Percentage of total expenditure to MOs own business
Marketing Office, Delhi							
2009-10	3.52	1.23	2.29	35	2.43	69	106
2010-11	3.34	1.16	2.18	35	1.92	57	88
2011-12	4.02	1.12	2.90	28	2.59	64	89
Marketing Office, Mumbai							
2010-11	1.83	0.63	1.22	34	0.49	27	40
2011-12	1.68	0.48	1.20	29	0.65	39	54

Annexure 12
Financial Position of Madhya Pradesh State Tourism Development Corporation Limited
from 2007-08 to 2011-12
(Referred to in paragraph 2.2.21)

(₹ in crore)					
Particulars	2007-08	2008-09	2009-10	2010-11	2011-12
Liabilities					
(a) Paid Up Capital					
i. Government	24.97	24.97	24.97	24.97	
ii. Others	--	--	--	--	
(b) Reserves & Surplus					
i. Free Reserves & Surplus	----	----	----	----	
ii. Share Premium Account	----	----	----	----	
iii. Capital Reserve	160.73	214.19	265.61	300.77	
(c) Borrowings					
i. From Govt. of India	--	--	--	--	
ii. From Financial Institutions	--	--	--	1.88	
iii. Foreign Currency Loan	--	--	--	--	
iv. Cash credit	--	--	--	--	
v. Others	--	--	--	--	
vi. Interest accrued & due	--	--	--	--	
(d) i. Current Liabilities & Prov.	10.17	21.42	34.44	53.58	
ii. Provision for Gratuity	--	--	--	--	
(e) Deferred Tax liability	--	--	--	--	
Total	195.87	260.58	325.02	381.20	
Assets					
Particulars					
(f.) Gross block	64.38	67.13	71.03	75.58	
(g) Less: depreciation	14.25	16.84	19.51	22.39	
(h) Net Block	50.13	50.28	51.52	53.19	
(i) Capital Works in Progress	52.43	95.38	153.30	198.56	
(j) Investment	0.78	0.78	0.78	0.78	
(k) Current Assets Loans & Advances	86.46	109.57	115.08	124.99	
(l) Deferred tax Assets	--	---	---	--	
(m) Misc. Exp. Not written off	--	---	---	--	
(n) Accumulated losses	6.07	4.57	4.34	3.68	
Total	195.87	260.58	325.02	381.20	
Net worth(a(i)+b(iii))	185.70	239.16	290.58	325.74	

Provisional
figures are
not available
with the
Company

Annexure-13

Statement showing the working results of Madhya Pradesh State Tourism Development Corporation Limited for the period from 2007-08 to 2011-12

(Referred to in paragraph 2.2.21)

(₹ in crore)

Particulars	Year				2011-12
	2007-08	2008-09	2009-10	2010-11	
Income-					
(a)Accommodation, Restaurant & Transport income	35.77	41.16	50.59	58.08	
(b) Other Income	7.30	8.90	9.96	11.00	
(c) Grant received for Tourism Promotion	15.47	16.47	15.77	18.33	
Total Income	58.54	66.53	76.32	87.41	
Expenditure-					Provisional figures are not available with the Company
(a) Operating Expenses	19.16	19.71	21.45	25.28	
(b) Payment to and provision for employees	11.23	13.53	21.74	20.97	
(c) administrative Expenses	9.21	14.02	15.02	17.21	
(d)Publicity promotion and festival	15.17	15.12	15.03	20.14	
(e) Depreciation	2.06	2.63	2.84	3.12	
Total Expenditure	56.83	65.01	76.08	86.72	
Profit/ Loss before tax	1.71	1.52	0.24	0.69	
Provision for tax	---	---	---	0.34	
Prior profit adjustment	(0.04)	(0.007)	(0.01)	0.30	
Profit/ Loss after tax	1.67	1.51	0.23	0.65	
Capital Employed	178.85	233.81	285.46	323.16	
Interest Paid	---	---	---	---	
Total return on capital employed	1.67	1.51	0.30	0.73	
Percentage return on capital employed	0.93	0.64	0.11	0.23	

Annexure-14

**Statement showing the expenditure incurred by Madhya Pradesh State Tourism Development Corporation Limited for development of software during the period from 2007-08 to 2011-12
(Referred to in paragraph 2.2.27)**

Sl. No.	Name of Unit/Office	Name of Agency	Nature of Work	Date of Payment	Bill Amount
1.	Hotel Palash, Bhopal	M/s Extranet Technology Pvt. Ltd.	Development and installation of Hotel Management Software at Hotel Palash Bhopal (Bill Amount ₹ 123596)	28/11/07, 17/11/08	123596
2.	Project Department	MP State Electronics Development Corp. Bhopal	Development of Software for Project Management in ASPX, ASP, HTML with SQL 2000 back end (Bill Amount ₹ 562361)	07/06/08, 11/02/09	562361
3.	Hotel Gateway Retreat Sanchi	M/s Extranet Technology Pvt. Ltd.	Development and installation of Hotel Management software at Hotel Gateway Retreat Sanchi (Bill Amount ₹ 86517)	17/11/08	86517
4.	Project Department	MP State Electronics Development Corp. Bhopal	Development of Software for Project Management in ASPX, ASP, HTML with SQL 2000 back end (Bill Amount ₹ 157585)	11/02/09	157585
5.	Finance & Accounts Department	M/s Extranet Technology Pvt. Ltd.	Financial Accounts & Payroll Management System (Bill Amount ₹ 330900)	12/08/09	330900
6.	Hotel Tansen Residency, Gwalior	IDS, Software Pvt. Ltd. Bangalore	Implementation of Fortune Express 4.1 Software product for Hotel Tansen Gwalior (Bill Amount ₹ 200000)	15/07/09 25/07/09	200000

Report on Public Sector Undertakings (General, Social, Economic and Revenue Sectors) for the year ended 31 March 2012

7.	Highway Retreat Dodi	M/s Extranet Technology Pvt. Ltd.	Implementation of Restaurant software at Dodi (Bill Amount ₹ 59562)	22/09/09	59562
8.	Hotel Kalchuri Residency, Jabalpur	IDS, Software Pvt. Ltd. Bangalore	Implementation of fortune Express 4.1 software product for Hotel Kalchuri Residency, Jabalpur (Bill Amount ₹ 200000)	31/03/10	200000
9.	Hotel Shipra Residency, Ujjain	IDS, Software Pvt. Ltd. Bangalore	Implementation of fortune Express 4.1 software product for Hotel Shipra Residency, Ujjain Bill amount ₹ 200000)	31/03/10	200000
10.	Transport Department	MP State Electronics Development Corp. Bhopal	Web based software for Transport Management System (Online bus Booking System) Bill Amount ₹ 538822)	19/01/09	538822

The total value of the work of software development was ₹ 24,59,343

Annexure-15

Statement containing details of Provisional tariff petition and dates of Provisional tariff orders
(Referred to Paragraphs 3.3)

Unit	Date of Commercial Operation	Date of filing Provisional tariff petition	Date of Provisional Order
Bansagar IV	20-Aug-06	11-Oct-06	18-Jan-08
Madhikheda HPS Unit-1	28-Aug-06	11-Oct-06	18-Jan-08
Jhinna Unit No.1	30-Aug-06	11-Oct-06	18-Jan-08
Madhikheda HPS Unit-2	09-Sep-06	11-Oct-06	18-Jan-08
Madhikheda HTPS Unit No.3	18-Aug-07	20-Aug-09	05-Jan-10
SGTPS Extn Unit- 5	28-Aug-08	24-Mar-09	24-Nov-09

Annexure-16

Statement showing fixed charges approved and allowed by MPERC
(Referred to Paragraphs 3.3)

Unit	2006-07			2007-08			2008-09			Total		
	Approved by MPERC	Allowed 95 per cent	difference	Approved by MPERC	Allowed 95 per cent	difference	Approved by MPERC	Allowed 95 per cent	difference	Approved by MPERC	Allowed 95 per cent	difference
Madhikheda HPS Unit-1 & 2	13.68	12.99	0.69	25.99	24.69	1.3	25.31	24.04	1.27	64.98	61.72	3.26
Madhikheda HPS Unit-3	-	-	0	3.7	3.52	0.18	7.17	6.81	0.36	10.87	10.33	0.54
Bansagar IV & Jhinna Unit 1	9.2	8.74	0.46	17.33	16.46	0.87	16.94	16.09	0.85	43.47	41.29	2.18
SGTPS Extn Unit- 5	-	-	-	-	-	-	206.28	195.96	10.31	206.28	195.96	10.31
Total	22.88	21.73	1.15	47.02	44.67	2.35	255.7	242.9	12.79	325.6	309.3	16.29

Unit	2009-10			2010-11			Total		
	Approved by MPERC	Allowed 95 per cent	difference	Approved by MPERC	Allowed 95 per cent	difference	Approved by MPERC	Allowed 95 per cent	difference
Madhikheda Unit-1, 2 & 3	28.52	27.09	1.43	27.92	26.52	1.4	56.44	53.62	2.82
Bansagar IV & Jhinna Unit I	14.6	13.87	0.73	14.31	13.59	0.72	28.91	27.46	1.45
SGTPS Extn Unit- 5	383.29	364.13	19.16	376.27	357.46	18.81	759.56	721.59	37.97
Total	426.41	405.09	21.32	418.5	397.58	20.92	844.91	802.67	42.24

Annexure-17

**Statement showing Outstanding Inspection Report (IRs) and Paragraphs to which
replies are awaited**

(Referred to Paragraphs 3.8.3)

Sl. No.	Name of the Department	Number of PSUs	Number of Outstanding IRs	Number of Outstanding Paragraphs	Earliest Year from which paragraphs outstanding
1	Energy	10	430	1268	2004-05
2	Commerce and Industry	3	3	9	2010-11
3	Mining Resources	1	1	2	2010-11
4	Tribal Welfare	1	1	9	2010-11
5	Tourism	1	1	8	2010-11
6	Home (Police)	1	2	3	2009-10
7	Rural industries	1	1	3	2010-11
8	Agriculture	1	2	12	2009-10
9	Minorities Welfare	1	1	3	2010-11
10	Forest	1	1	7	2010-11
11	Food, Civil supplies & Consumer protection	2	2	16	2010-11
12	PWD	1	1	1	2010-11
13	Urban Development	5	7	21	2008-09
14	Transport	1	35	76	2004-05
	Total	30	488	1438	

Annexure-18

Performance Audit and Draft Paragraphs (DPs) to which the replies are awaited

(Referred to in Paragraph 3.8.3)

S. No.	Name of Department	No. of Performance Audit	No. of DPs	Period of Issue
1.	Commerce & Industry Department	--	01	June 2012
2.	Mineral Resource Department	--	01	July 2012
3.	Department of Farmer welfare and Agriculture Development	--	01	June 2012
4.	Energy Department	01	05	June 2012 to August 2012
	TOTAL	01	7²⁰	

²⁰ One Draft Paragraph (3.1) was issued to two companies viz MPAKVN (Indore) Limited and Madhya Pradesh State Agro Industries Development Corporation Limited (MPAI) , which are under Department of Commerce & Industry and Department of Farmer welfare and Agriculture Development respectively.