

Annexures

Annexure – 1.1
(Reference to paragraph 1.2 page 2)

List of audited entities falling within the Economic Sector

A. Departments

- Agriculture and Co-operation
- Animal Husbandry and Fisheries
- Energy
- Environment, Forests, Science and Technology
- Industries and Commerce
- Information Technology and Communications
- Infrastructure and Investment
- Irrigation and Command Area Development
- Public Enterprises
- Transport, Roads and Buildings

B. State Public Sector Undertakings (State Government Companies and Statutory Corporations)

(i) Working Government Companies and Statutory Corporations

Department	Government Companies and Statutory Corporations
Agriculture and Co-operation	<ul style="list-style-type: none"> • Andhra Pradesh State Agro Industries Development Corporation Limited • Andhra Pradesh State Seeds Development Corporation Limited • Andhra Pradesh State Warehousing Corporation
Animal Husbandry and Fisheries	<ul style="list-style-type: none"> • Andhra Pradesh Meat Development Corporation Limited • Indira Gandhi Centre for Advances Research on Livestock Private Limited
Energy	<ul style="list-style-type: none"> • Andhra Pradesh Heavy Machinery and Engineering Limited • Andhra Pradesh Power Finance Corporation Limited • Andhra Pradesh Power Development Company Limited • Andhra Pradesh Power Generation Corporation Limited • Central Power Distribution Company of Andhra Pradesh Limited • Eastern Power Distribution Company of Andhra Pradesh Limited • Northern Power Distribution Company of Andhra Pradesh Limited • New and Renewable Energy Development Corporation of Andhra Pradesh Limited • Southern Power Distribution Company of Andhra Pradesh Limited • The Singareni Collieries Company Limited • Transmission Corporation of Andhra Pradesh Limited

Department	Government Companies and Statutory Corporations
Environment, Forests, Science and Technology	<ul style="list-style-type: none"> Andhra Pradesh Forest Development Corporation Limited
Industries and Commerce	<ul style="list-style-type: none"> Andhra Pradesh Handicrafts Development Corporation Limited Andhra Pradesh Industrial Development Corporation Limited Andhra Pradesh Industrial Infrastructure Corporation Limited Andhra Pradesh Gas Infrastructure Corporation Private Limited Andhra Pradesh Mineral Development Corporation Limited Andhra Pradesh State Financial Corporation Andhra Pradesh Trade Promotion Corporation Limited Damodhara Minerals Private Limited Fab City (India) Private Limited Krishnapatnam International Leather Complex Private Limited Leather Industries Development Corporation of Andhra Pradesh Limited Pashamylaram Textile Park The Nizam Sugars Limited Vizag Apparel Park for Export
Information Technology and Communications	<ul style="list-style-type: none"> Andhra Pradesh Technology Services Limited
Infrastructure and Investment	<ul style="list-style-type: none"> Andhra Pradesh Aviation Corporation Limited Andhra Pradesh Gas Distribution Corporation Limited Infrastructure Corporation of Andhra Pradesh Limited
Irrigation and Command Area Development	<ul style="list-style-type: none"> Andhra Pradesh State Irrigation Development Corporation Limited
Transport, Roads and Buildings	<ul style="list-style-type: none"> Andhra Pradesh State Road Transport Corporation Limited

(ii) Non-working Government Companies

Department	Government Companies and Statutory Corporations
Agriculture and Co-operation	<ul style="list-style-type: none"> Hyderabad Chemicals and Fertilisers Limited
Animal Husbandry and Fisheries	<ul style="list-style-type: none"> Andhra Pradesh Dairy Development Corporation Limited Andhra Pradesh Fisheries Corporation Limited Proddutur Milk Foods Limited
Industries and Commerce	<ul style="list-style-type: none"> Allwyn Auto Limited Allwyn Watches Limited Andhra Pradesh Automobile Tyres and Tubes Limited Andhra Pradesh Electronics Development Corporation Limited Andhra Pradesh Small Scale Industries Development Corporation Limited

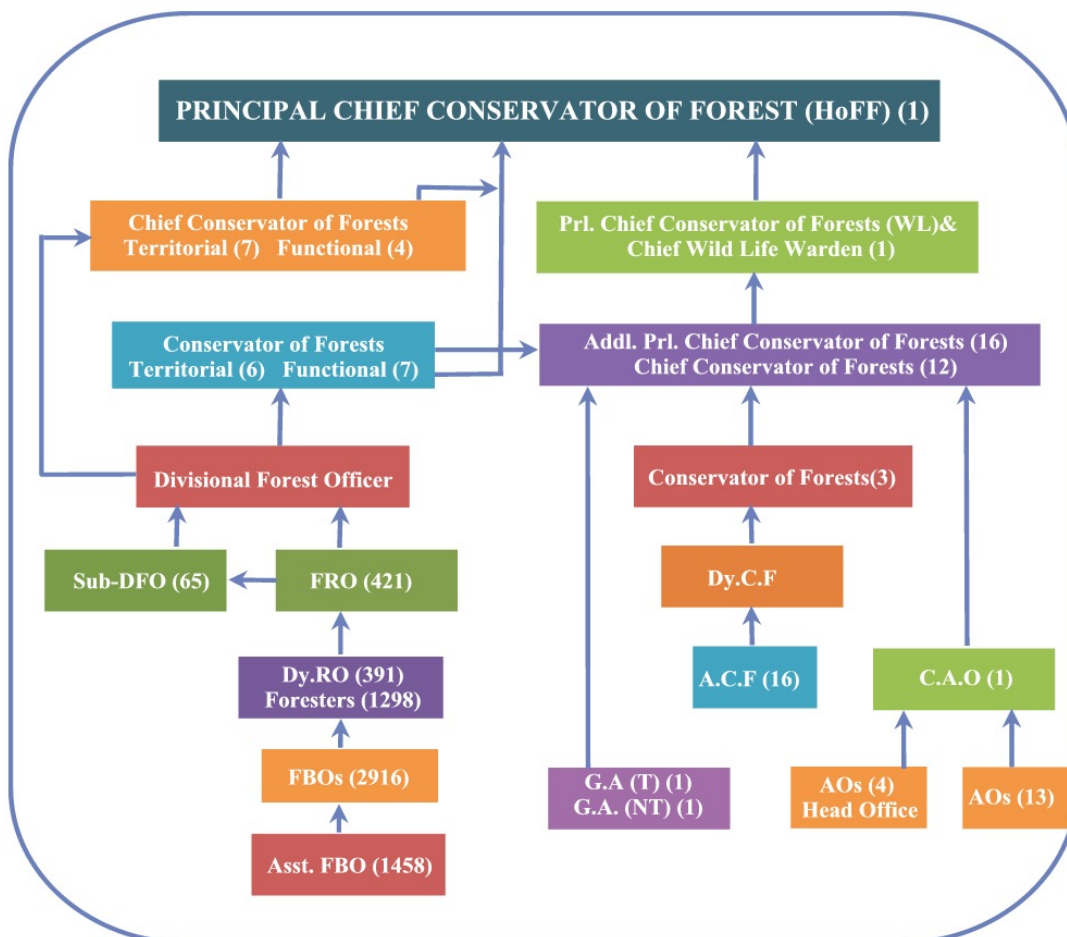
Department	Government Companies and Statutory Corporations
	<ul style="list-style-type: none"> • Andhra Pradesh Scooters Limited • Andhra Pradesh State Non Resident Indian Investment Corporation Limited • Andhra Pradesh State Textile Development Corporation Limited • Andhra Pradesh Steels Limited • Apronix Communications Limited • Golkonda Abrasives Limited • Krishi Engineering Limited • Marine and Communication Electronics (India) Limited • PJ Chemicals Limited • Republic Forge Company Limited • Southern Transformers and Electricals Limited • Suganthy Alloy Castings Limited • Vidyut Steels Limited

C. Autonomous Bodies involving issue of Separate Audit Reports (SARs), where CAG is the sole auditor

- Andhra Pradesh Khadi and Village Industries Board
- Environment Protection Training and Research Institute

Annexure – 3.1
(Reference to paragraph 3.1.4 page 39)

Organisational structure of Forest Department



Sub-DFO	:	Sub-Divisional Forest Officer
FRO	:	Forest Range Officer
Dy.RO	:	Deputy Range Officer
FBO	:	Forest Beat Officer
Asst. FBO	:	Assistant Forest Beat Officer
Dy. CF	:	Deputy Conservator of Forests
CAO	:	Chief Accounts Officer
ACF	:	Assistant Conservator of Forests
AO	:	Accounts Officer
GA (T)	:	Gazetted Assistant (Technical)
GA (NT)	:	Gazetted Assistant (Non-Technical)

Annexure – 3.2
(Reference to paragraph 3.4 page 40)

Test-checked Audit Sample

Sl. No.	Circles	Sl. No.	Circles
1	Territorial Circle, Hyderabad	7	Territorial Circle, Guntur
2	P&E Circle, Hyderabad	8	Territorial Circle, Kurnool
3	STC Circle, Hyderabad	9	P&E Circle, Ananthapur
4	R&D Circle, Hyderabad	10	P&E Circle, Visakhapatnam
5	Territorial Circle, Khammam	11	FDPT, Srisailem
6	Territorial Circle, Warangal	12	Territorial Circle, Visakhapatnam

Sl. No.	Divisions	Sl. No.	Divisions
1	DFO (T), Hyderabad	14	DFO (T), Adilabad
2	DFO (SF), RR District, Hyderabad	15	DFO (WLM), Jannaram
3	SS, Rajahmundry	16	DFO (WLM), Atmakur
4	DFO (T), Khammam	17	DFO (WLM), Eluru
5	DFO (T), Bhadrachalam South	18	DFO (Logging), Nirmal
6	DFO (T), Warangal North	19	DFO (Logging), Jangareddygudem
7	DFO (T), Karimnagar West	20	DFO (Logging), Bhadrachalam
8	DFO (WLM), Warangal	21	DFO (T), Narasipatnam
9	DFO (T), Nellore	22	DFO (T), Vizianagaram
10	DFO (T), Kadapa	23	Nehru Zoological Park, Hyderabad
11	DFO (FSD), Kurnool	24	WLM, Hyderabad
12	DFO (SF), Ananthapur	25	APFA, Dulapally, Hyderabad
13	DFO (T), Chittoor West		

Annexure - 3.3
(Reference to paragraph 3.5.6.8 page 56)

Failure of Plantations

Sl. No	Name of the Division	Scheme under which raised	Year of plantation & area planted	Location of plantation	Amount spent on plantation (₹ in lakh)	Survival percentage	Reasons for failure
1	Khammam	RIDF-XIII	2007-08, 25 Ha	Pallewada VSS Sathupalli Range	5.68	9	Failure in raising year itself due to unsuitable climate
2	Kothagudem	RIDF-XIII	2007-08, 11.15 Ha	Thippannapally VSS, Ramavaram Range	1.65	0	Damaged in Bhoopartam
3	Kothagudem	RIDF-XIII	2009-10	Anugulabodu VSS, Komararam Range	1.91	0	Encroachments
4	Warangal North	FDA - NAP	2007-08, 20 Ha	Machapur, VSS- Mulugu range	--	--	Failure due to poor maintenance on account of delayed funding
5	Warangal North	FDA- NAP	2007-08, 3 Ha	Mullakatta VSS, Eturunagaram Range	--	--	Failure due to poor maintenance on account of delayed funding
6	Warangal North	FDA- NAP	2007-08, 7 Ha	Etur VSS, Eturunagaram Range	--	--	Failure due to poor maintenance on account of delayed funding
7	Warangal North	FDA- NAP	2007-08, 7 Ha	Papkapur VSS, Eturunagaram Range	--	--	Failure due to poor maintenance on account of delayed funding
8	Warangal North	FDA- NAP	2009-10, 15 Ha	L.B Nagar VSS, Pasara Range	--	--	Damaged
9	Warangal North	FDA- NAP	2009-10 10 Ha	Narayanpur VSS, Bhupalpalli (N) Range	1.69	--	Damaged
10	Warangal North	FDA- NAP	2009-10 5 Ha	Roheer VSS, Eturunagaram Range	--	--	Failure due to poor maintenance on account of delayed funding
11	Warangal North	FDA- NAP	2008-09 7 Ha	Dubbagudem VSS., Mulugu Range	--	--	Failure due to poor maintenance on account of delayed funding
12	Warangal North	FDA- NAP	2008-09 11 Ha	Tondyal laxmipur VSS, Eturunagaram Range	--	--	Failure due to poor maintenance on account of delayed funding

Sl. No	Name of the Division	Scheme under which raised	Year of plantation & area planted	Location of plantation	Amount spent on plantation (₹ in lakh)	Survival percentage	Reasons for failure
13	Warangal North	FDA-NAP	2009-10 20 Ha	Katrapally VSS, Mulugu Range	--	--	Failure due to poor maintenance on account of delayed funding
14	Warangal North	FDA-NAP	2009-10 10 Ha	Andhukuthanda VSS, Bhupalpally North Range	--	--	Failure due to poor maintenance on account of delayed funding
15	Warangal North	FDA-NAP	2009-10 5 Ha	Ontippathanda VSS, Bhupalpally Range	--	--	Damaged
16	Warangal North	FDA-NAP	2009-10 5 Ha	Ramnaikthanda VSS, Bhupalpalli North Range	--	--	Damaged
17	Warangal North	FDA-NAP	2009-10 11 Ha	Tondyal laxmipur VSS, Eturunagaram	--	--	Failure due to encroachments
18	Warangal North	FDA-NAP	2008-09 15 Ha	Etur VSS, Eturunagaram Range	--	--	Failure due to encroachments
19	Warangal North	FDA-NAP	2008-09 15 Ha	Tondyal Laxmipur VSS, Eturunagaram Range	--	--	Failure due to encroachments
20	Warangal North	FDA-NAP	2008-09 15 Ha	Papkapur VSS, Eturunagaram	--	--	Failure due to encroachments
21	Warangal North	FDA-NAP	2010-11 2 Ha	Ekkela VSS, Tadvai Range	0.16	--	Failure due to encroachments
22	Warangal North	RIDF-Bio Diesel	2009-10 5 Ha	JaggaiPET VSS, Bhupalpally (N)	1.60	--	Damaged
23	Warangal North	RIDF-Bio Diesel	2009-10 5 Ha	Jubilee Nagar, Bhupalpally (N)	0.82	--	Damaged
24	Warangal North	RIDF-Bio Diesel	2009-10 5 Ha	Immadigudem VSS, Tadvai Range	0.37	--	Failure due to poor management and funds crunch
25	Warangal North	RIDF-Bio Diesel	2009-10 5 Ha	Ekkela VSS, Tadvai Range	0.30	--	Failure due to poor management and funds crunch
26	Warangal North	RIDF-Bio Diesel	2009-10 5 Ha	Manzoor nagar VSS, Bhupalpally (N) Range	0.25	--	Failure due to poor management and funds crunch
27	Warangal North	RIDF-Bio Diesel	2009-10 5 Ha	Rajeev nagar VSS, Bhupalpally (N) Range	--	--	Failure due to poor management and funds crunch
28	Warangal North	RIDF-Bio Diesel	2009-10 10 Ha	Laxmipur VSS, Bhupalpally (N) Range	0.48	--	Failure due to poor management and funds crunch

Sl. No	Name of the Division	Scheme under which raised	Year of plantation & area planted	Location of plantation	Amount spent on plantation (₹ in lakh)	Survival percentage	Reasons for failure
29	Warangal North	RIDF-Bio Diesel	2009-10 10 Ha	Laxmipur VSS, Bhupalpally (N) Range	0.48	--	Failure due to poor management and funds crunch
30	Warangal North	FDA-NAP	2011-12 10 Ha	Ramnaikthanda VSS, Bhupalpally (N) Range	1.89	--	Failure due to poor management and funds crunch
31	Warangal North	CAMPA (NPV)	2011-12 5 Ha	Puredupalli- 1 VSS, Eturunagaram Range	3.29	--	Failure due to encroachments
32	Warangal North	CAMPA (NPV)	2011-12 5 Ha	Puredupalli -2 VSS, Eturunagaram Range	0.67	--	Failure due to encroachments
33	S.S. Rajahmundry	C.S.S	2010-11 50 Ha	Marlagudem RF, Compartment No. 136 & 137	15.00	--	Damaged due to fire, due to non clearance of weeding, non execution of fire tracing and absence of watch and ward
Total					36.24		

Annexure – 3.4
(Reference to paragraph 3.5.7 page 56)

Profile of Functioning of Vana Samrakshana Samithis

Sl. No.	Name of the Division	No. of VSSs formed	Year wise expenditure involving VSSs					
			2009-10		2010-11		2011-12	
			No. of VSSs	Amount (₹ in lakh)	No. of VSSs	Amount (₹ in lakh)	No. of VSSs (FDA VSSs given in brackets)	Amount (₹ in lakh)
1	Khammam	110	29	80.35	19	21.30	26 (23%) (FDA- 14)	130.97
2	Warangal North	127	19	20.81	12	2.01	15 (12%) (FDA- 10)	40.99
3	Warangal WLM	43	10	0.92	NIL	NIL	1 (FDA) (2%)	0.350
4	Karimnagar West	236	17	24.82	17	18.33	18 (8%) (FDA- 18)	31.89
5	Chittoor West	232	96	111.97	90	61.97	71 (30%) (FDA- 60)	83.80
6	Hyderabad	123	50	103.12	38	90.11	23 (19%) (NIL)	43.88
7	Adilabad	325	44	39.47	Nil	Nil	17 (5%) (NIL)	1.03
8	Kakinada	528	116	214.77	113	175.25	100 (19%) (FDA-75)	243.48
9	Jannaram WLM	73	16	51.89	13	63.94	16 (22%) (NIL)	49.24
10	WLM Eluru	40	18	32.61	24	61.72	14 (35%) (NIL)	132.25

Annexure – 3.5
(Reference to paragraph 3.5.9.2 page 60)

Delay in Funds Flow

Sl. No.	Name of the Division	Scheme	Year	Date of release by PCCF - Amount	Date of authorization by PAO	Delay
1	SF Division, RR Dist., Hyderabad	09-Mixed Plantation	2009-10	1. 1 st Quarter 22.05.09 - ₹1.70 lakh	24.06.09	1 month 2 days
				2. IV th Quarter 20.03.10 - ₹ 3.16 lakh	NIL	NIL
			2010-11	1. 19.06.10 - ₹ 2 lakh	25.07.10	1 month 6 days
				2. 15.03.10 - ₹0.50 lakh	No authorization	
		2011-12	27.05.11- ₹2.685 lakh	25.06.11	28 days	
		12 th Finance Commission	2009-10	15.10.10 - ₹ 2.80 lakh	December 2009	1 month 15 days
		13 th Finance Commission	2010-11	8.12.10 - ₹ 53.23 lakh 15.12.10 - ₹ 47.88 lakh (SF)	January 2012	1 month
			2011-12	22.11.11 - ₹ 67.73 lakh	February 2012	More than 2 months
2	All Divisions	ACA	2010-11	17.02.11	Last week of March 2011	40 days
			2011-12	2.11.11	Jan./Feb. 2011	3 months
3	Chittoor West	Project Elephant	2009-10	14.09.09 - ₹ 21.50 lakh	3.10.09	20 days
			2010-11	19.06.10	4.07.10	15 days
			2011-12	22.06.11 - ₹15.850 lakh	Feb. 2012	7 months 8 days
		13 th Finance Commission (FDA)	2010-11	8.12.10 - ₹ 4.20 lakh	Jan. 2011	1 month
			2011-12	22.11.11- ₹ 34 lakh	Feb. 2012	2 month
4	Warangal North	IFMS	2009-10	27.10.09 - ₹ 0.67 lakh	29.01.10	3 month
		ACA	2011-12	2.11.11 - ₹ 2 lakh	Jan.2012	2 month
		13 th Finance Commission	2011-12	22.11.11- ₹ 11.535 & ₹10.320 lakh	5.05.12	1 month 13 days
5	Khammam	13 th Finance Commission	2010-11	8.12.10 - ₹ 8.925 lakh	Jan. 2011	1 month
			2011-12	22.11.11 - ₹ 34.37 lakh	Feb. 2012	2 month
6	SS, Rajahmundry	13 th Finance Commission	2010-11	7.01.11 - ₹ 8.25 lakh	Feb. 2011	1 Month

Annexure - 4.1
(Reference to paragraph 4.1.1.2 page 65)

Process for planning and execution of ROBs/ RUBs

Stage	Details
Proposal for ROBs/ RUBs for inclusion in Railway Budget	<ul style="list-style-type: none"> • Every year, the Chief Bridge Engineer of the Railway Zone¹ communicates a list of eligible LCs with TVU of more than 1 lakh for construction of ROBs/RUBs on cost-sharing basis. • Field officers of both Departments (Railways and R&B) Department conduct a joint inspection of the site, and finalise the proposal for ROB/RUB (including LC closure declaration by the State Government, traffic census by R&B Department etc.) and submit the same to the Chief Bridge Engineer through the State Government. • The Chief Bridge Engineer submits the total consolidated proposals in the State to the Railway Board for approval, after which the proposed ROBs/RUBs are sanctioned as Railway Safety Works (RSWs) in the Railway Work Programme (RWP), as part of the annual Railway Budget.
Finalisation of alignment, and approval of GAD (General Arrangement Drawing)	<ul style="list-style-type: none"> • On receipt of sanctions in the Railway Board, the R&B Department and Railways conduct joint inspection of the proposed site, and finalise the feasible alignment of approaches, including the Road Crest Level (RCL). • On submission of alignment by R&B Department, the Railways prepare the General Arrangement Drawing (GAD) and forwards it to the R&B Department for approval. The GAD will be approved by the R&B Department, unless a geometric parameter (e.g. skew angle, RCL) attracts attention.
Finalisation of Estimates	<ul style="list-style-type: none"> • After approval of GAD, the R&B Department and the Railways take up preparation of designs and estimates for the approaches and bridge proper respectively. The process of detailed technical estimates and land acquisition is to be completed within 3 to 12 months. • The R&B Department submits the estimates for approaches to the Railways for preparation of the Combined Estimate of the Bridge Proper and Approaches, which is then furnished by the Railways to R&B Department for approval. • In the meanwhile, GoAP is addressed for according administrative sanction².

¹ South Central Railway, Southern Railway and East Coast Railway

² The administrative sanction is generally taken for 50 *per cent* of the cost of the bridge proper and 100% of the approaches (including land acquisition); this is subject to subsequent adjustment with the Railways

Stage	Details
Land Acquisition process	<ul style="list-style-type: none"> • Simultaneously, the land acquisition process is initiated in consultation with Revenue authorities after approval of the final alignment and Railway GAD. The process of land acquisition involves various stages - (a) preparation of land plan schedules indicating the areas to be acquired, separately for Government land and private land, which is furnished to the District Collector by the R&B Department; (b) deposit of amount with Revenue authorities for compensation payable to land losers; (c) joint inspections by R&B Department and Revenue authorities; (d) publication of Draft Notification and Draft Declaration by the Revenue authorities, indicating details of the area and owners; and (e) handing over the land to R&B Department by the Revenue authorities after due process, as per the LA Act.
Tendering and Contracting, and Project Execution	<ul style="list-style-type: none"> • After receipt of administrative and technical sanctions, tenders are invited by the R&B Department for the approaches, contracts awarded and works are to be executed within 18 to 24 months of award.
LC closure	<ul style="list-style-type: none"> • After opening of ROBs/RUBs, the LCs are to be closed by GoAP (in line with the LC closure declaration at the time of the ROB/RUB proposal).

Annexure - 4.2
(Reference to paragraph 4.1.3.3 page 67)

List of ROB/RUBs selected for test-check

Sl. No.	Name of the ROB/RUB in short	Full nomenclature of the work	Financial progress in Percentage as reported by Department	Physical Status	Agreement / Estimate cost (₹ in crore)	Expenditure as reported by Department (₹ in crore)
A.	COMPLETED					
1	ROB at Eluru (Vijayawada – Visakhapatnam section)	Construction of ROB at Eluru in lieu of LC 349 at railway km.487/12-14 and km 64/374 of Vijayawada – Visakhapatnam road (old NH road) in Eluru municipal limits, in West Godavari District	100	Completed	14.60	14.56
2	ROB at Kovur Gate (Gudur-Vijayawada section)	Construction of ROB at Kovur gate (near Polytechnic college) in Nellore town in lieu of LC No 119 at railway km 176/12-15 of Gudur-Vijayawada section at km 0/2 of Nellore-Bellary-Bombay road in SPS Nellore District	100	Completed	13.51	30.96
3	ROB at Lankelapalem (Vijayawada-Visakhapatnam section)	Construction of ROB at Lankelapalem in lieu of LC No 490 at railway km755/3-6 of Vijayawada-Visakhapatnam section at km 7/4 of Parawada-Asakapalli road in Visakhapatnam District	100	Completed	14.01	23.28
4	ROB at Kazipet yard (Railway km 324/1-2 in Kazipet yard)	Construction of ROB in lieu of LC No 59A at railway km 324/1-2 in Kazipet yard at km 132/370 of Hyderabad-Hanamkonda road in Warangal District	100	Completed	5.24	9.80
5	ROB at Milk Project (Kazipet-Vijayawada section)	Construction of ROB at Milk Project in Vijayawada at LC Nos 315A, 315B and G6 at railway km 581/01-03 and km 581/20-22 of Kazipet-Vijayawada section at km 5/640 of Vijayawada-Vissannapeta road in Krishna District	100	Completed	17.50	18.98
6	ROB at Bhalabhadrapuram (Vijayawada-Visakhapatnam section)	Construction of ROB at Bhalabhadrapuram in lieu of LC No 417 at railway km 607/30-32 of Vijayawada and Visakhapatnam section corresponding to road km 14/8-10 of Someswaram – Rajanagaram road in East Godavari District	100	Completed (but not opened for traffic)	11.50	13.20

Sl. No.	Name of the ROB/RUB in short	Full nomenclature of the work	Financial progress in Percentage as reported by Department	Physical Status	Agreement / Estimate cost (₹ in crore)	Expenditure as reported by Department (₹ in crore)
7	ROB at Hanuman Junction (Vijayawada–Visakhapatnam section)	Construction of ROB at Hanuman Junction in lieu of LC No 336 at railway km 470/12 of Vijayawada – Visakhapatnam section at km 61/8 of Machilipatnam-Nuzvid-Kalluru road in Krishna District	100	Completed	12.53	16.44
8	ROB at Anaparthi (Vijayawada–Visakhapatnam section)	Construction of ROB at Anaparthi in lieu of LC No 412T and 413T at railway km 601/7-8 of Vijayawada – Visakhapatnam section at km 0/6 of ILTD road in East Godavari District	100	Completed	9.48	9.87
9	ROB on Vallabhai road (Kakinada – Samalkot section)	Construction of ROB at Kakinada in lieu of L.C No 9 at railway km 12/22-23 of Kakinada – Samalkot section on Vallabhai road from NH-214 at Jagannaickpur to NH-214 Junction at SP office in Kakinada town limits, in East Godavari District	100	Completed	9.49	11.31
10	ROB on Matwada (Kazipet-Vijayawada section)	Construction of ROB in lieu of L.C. No 63/T-3 at railway km377/45-47 of Kazipet-Vijayawada section on Matwada diversion road connecting Hanamkonda-Narsampet-Mahabubabad road at km 3/5 and joining at km 7/8-10 of Hanamkonda-Khammam road in Warangal District	100	Completed	7.37	10.40
11	ROB at Tanuku (Bhimavaram-Nidadavole section)	Construction of ROB at Tanuku in lieu of L.C No 153 at railway km 138/6-7 of Bhimavaram-Nidadavole section at km 131/914 of old Vijayawada-Visakhapatnam road in West Godavari District	100	Completed	8.38	9.09
12	ROB at Kakinada town (Kakinada town-Kakinada port section)	Construction of ROB at Kakinada town limits in lieu of L.C No 11 at railway km 14.05 of Kakinada town-Kakinada port section on Brahmarshi street from NH214 Junction at Manasarovar hotel to Dairy farm centre, in East Godavari District	100	Completed	10.34	11.74

Sl. No.	Name of the ROB/RUB in short	Full nomenclature of the work	Financial progress in Percentage as reported by Department	Physical Status	Agreement / Estimate cost (₹ in crore)	Expenditure as reported by Department (₹ in crore)
13	ROB at Dornakal (Kazipet–Vijayawada section)	Construction of ROB at Dornakal in lieu of LC No 92 at railway km 463/06-08 Kazipet–Vijayawada section corresponding to road km 1/ 4 of Dornakal – Lingala road in Khammam District	100	Completed	10.89	11.39
14	ROB at Rayavaram (Guntur-Nandyal section)	Construction of ROB at Rayavaram in lieu of LC No 236 at railway km 143/10-12 of Guntur – Nandyal section at R&B road at 37/2 of Podili-Markapur road in Prakasam District	100	Completed	14.05	12.06
SUB TOTAL (Completed)					158.89	203.08
B.	IN PROGRESS					
1	4 Lane ROB at Renigunta (Renigunta–Tirupati sections)	Construction of ROB at Renigunta in lieu of LC No 111 on NH 205 at km 84/25-37 between Renigunta–Tirupati stations in Chittoor District	80	In progress	26.34	19.69
2	RUB at RIMS, Kadapa town	Construction of RUB at RIMS in Kadapa town limits at railway km 257/11-12 between Kadapa-Kanamolapalli stations, in YSR District <i>(fully state funded)</i>	90	In progress	4.32	3.90
3	ROB at Dwarapudi (Vijayawada–Visakhapatnam section)	Construction of ROB at Dwarapudi in lieu of LC No 410 at railway km 598/18-20 of Vijayawada–Visakhapatnam section corresponding to road km 14/10 of Tokada-Dwarapudi road in East Godavari District	40	In progress	17.81	6.70
4	ROB at Dendukuru (Kazipet–Vijayawada section)	Construction of ROB at Dendukuru in lieu of LC No 125 D&U at railway km 534/8-10 of Kazipet–Vijayawada section at km 5/4-6 of Madhira-Yerrupalem road in Khammam District	77	In progress	19.68	17.56
5	ROB at Rajampet (Renigunta-Guntakal section)	Construction of ROB at Rajampet in lieu of LC No 103 at railway km 208/13-14 of Renigunta-Guntakal sections corresponding to road km 1/6-8 of Rajampet-Kadiri-Tumkur road in YSR District	100	In progress	11.90	10.88

Sl. No.	Name of the ROB/RUB in short	Full nomenclature of the work	Financial progress in Percentage as reported by Department	Physical Status	Agreement / Estimate cost (₹ in crore)	Expenditure as reported by Department (₹ in crore)
6	ROB at Palakol (Bhimavaram–Narasapur section)	Construction of ROB at Palakol in lieu of LC No 23 at railway km 21/10-11 of Bhimavaram –Narasapur section at km 22/0 +71m in Palakol municipal limits of Palakol town on Bhimavaram-Palakol road in West Godavari District	50	In progress	7.53	11.66
7	ROB at Yerraguntla (Renigunta-Guntakal section)	Construction of ROB at Yerraguntla yard in lieu of LC No 138 at railway km 298/4-5 of Renigunta-Guntakal section corresponding to road km 0/4-8 of Yerraguntla-Proddatur road in YSR District	98	In progress	8.82	15.91
8	2 nd ROB at Tadepalligudem (Vijayawada – Visakhapatnam section)	Construction of 2 nd ROB at Tadepalligudem municipal limits at 160 metres towards Tadepalligudem railway station from LC No.371 at railway km 534/28-31 of Vijayawada –Visakhapatnam section and at km 112/8 of Old NH-5 and ends at km 60/10 of N.A road in West Godavari District (<i>fully state funded</i>)	100	In progress	11.67	21.70
9	ROB at Ghanpur (Secunderabad–Kazipet section)	Construction of ROB at Ghanpur in lieu of LC No 49 at railway km 305/120-140 on Secunderabad –Kazipet section in km 0/8-10 of branch road to railway station connecting Ghanpur-Zaffarghad and Ghanpur–Palakurthy road in Warangal District	30	In progress	13.65	3.35
10	ROB at Tummikapalli (between stations Kothavalasa–Kantakapalli in Vizianagaram District)	Construction of ROB at Tummikapalli in lieu of LC No 481 at km 0/2 of Kothavalasa Deverapalli road at railway km 851/0-1 between stations Kothavalasa Kantakapalli – in Vizianagaram District	30	In progress	10.77	3.26
11	RUB at Puttur (Renigunta-Chennai section)	Construction of RUB in Puttur Town limits in lieu of LC No 57 between Renigunta-Chennai section in Chittoor District	100	In progress	2.52	2.30
12	RUB at Mahabubabad (Kazipet–Vijayawada)	Construction of RUB at Mahabubabad in lieu of LC No 81 at railway km 437/3-15 of Kazipet–Vijayawada section in km 0/4 of Mahabubabad-Maripeda road in Warangal District	67	In progress	7.62	1.40

Sl. No.	Name of the ROB/RUB in short	Full nomenclature of the work	Financial progress in Percentage as reported by Department	Physical Status	Agreement / Estimate cost (₹ in crore)	Expenditure as reported by Department (₹ in crore)
13	ROB at Puttur (Renigunta–Chennai section)	Construction of ROB at Puttur in lieu of LC No 58 at railway km 111/38 to 112/2 of Renigunta – Chennai section in Chittoor District	90	In progress	18.59	18.13
14	RUB at Nandalur yard	Construction of RUB at km 219/14-15 in Nandalur station yard, YSR District (fully state funded)	0	In progress	1.95	1.62
15	ROB at Tuni (Vijayawada–Visakhapatnam section)	Construction of ROB at Tuni in lieu of LC No 449 at railway km 682/16-18 of Vijayawada–Visakhapatnam section corresponding to road km 0/0 to 0/660 in Tuni town limits in East Godavari District	90	In progress	8.82	11.27
16	ROB on Madhira-Yerrupalem road (Kazipeta–Vijayawada section)	Construction of ROB in lieu of LC NO.128/T at railway km 542/30-32 of Kazipet-Vijayawada section in km 17/2-4 of Madhira-Yerrupalem road in Khammam District	15	In progress	11.94	1.70
17	ROB at Kadium (Vijayawada-Visakhapatnam section)	Construction of ROB at Kadium in lieu of LC No.398 at railway km.579/12-14 of Vijayawada-Visakhapatnam section corresponding to road at km 0/6 of Rajahmundry–Kesavaram road in East Godavari District	100	In progress	9.66	8.93
18	ROB at Bonakal (Kazipet–Vijayawada section)	Construction of ROB at Bonakal Yard in lieu of L.C No 117 at km 512/35-37 of Kazipet–Vijayawada section and km 25/2-4 of Jaggaiahpet-Wyra road in Khammam District	73	In progress	17.55	15.27
19	ROB at Gannavaram (Vijayawada-Visakhapatnam section)	Construction of ROB at Gannavaram in lieu of LC No 320 at railway km 448/6-8 of Vijayawada-Visakhapatnam section in km30/2 of Nuzvid-Gannavaram road in Krishna District	100	In progress	12.96	10.37

Sl. No.	Name of the ROB/RUB in short	Full nomenclature of the work	Financial progress in Percentage as reported by Department	Physical Status	Agreement / Estimate cost (₹ in crore)	Expenditure as reported by Department (₹ in crore)
20	ROB on SH 30 at Renigunta (connecting Gooty Renigunta line to Gudur-Renigunta line)	Construction of ROB at km 1/4-6 on SH-30 in connection with proposed railway Bye pass line connecting Gooty-Renigunta and Gudur-Renigunta lines near Renigunta, in Chittoor District. (Fully Railway Funded)	83	In Progress	7.48	10.12
SUB TOTAL (In Progress)					231.58	195.72
C.	IN INITIAL STAGES					
1	ROB at Veleru (Vijayawada-Visakhapatnam)	Construction of ROB at Veleru village limits in lieu of LC No 334E at railway km 467/8-10 of Vijayawada – Visakhapatnam and km 30/2 of Sobhanapuram Hanuman Junction in Krishna District	0	Initial stage	0	0
2	RUB at Kodur (Guntakal–Renigunta section)	Construction of RUB at Kodur railway station in YSR District in Guntakal–Renigunta section (fully state funded)	0	Initial stage	0	0
3	ROB at Kamalapuram (Chennai–Guntakal section)	Construction of ROB at km 14/4-8 of Khajipeta Kamalapuram road in Kamalapuram Town in lieu of LC No 134 of Madras–Guntakal section corresponding to railway km 282/16-283/1 in YSR District (fully state funded)	0	Initial stage	0	0
4	ROB at Gunadala (Vijayawada–Gudivada section)	Construction of ROB in lieu of LC No 8 at Gunadala at railway km 5/6-7 of Vijayawada – Gudivada section at km 5/204 of Vijayawada-Gudivada road in Vijayawada municipal limits in Krishna District	0	Initial stage	19.60	0
5	ROB at Powerpet (Vijayawada–Visakhapatnam section)	Construction of ROB in lieu of LC No 347 at railway km 486/26-28 of Vijayawada – Visakhapatnam section and km 64/2 of Vijayawada – Visakhapatnam road in Eluru town limits (Powerpet Gate) in West Godavari District	0	Initial stage	0	0

Sl. No.	Name of the ROB/RUB in short	Full nomenclature of the work	Financial progress in Percentage as reported by Department	Physical Status	Agreement / Estimate cost (₹ in crore)	Expenditure as reported by Department (₹ in crore)
6	ROB at Vatluru (Vijayawada-Visakhapatnam section)	Construction of ROB in lieu of LC No 343 at railway km 480/26-28 Vijayawada – Visakhapatnam section at Vatluru on Vijayawada Visakhapatnam road in West Godavari District	0	Initial stage	0	0
7	ROB at Muddanur (Renigunta-Guntakal section)	Construction of ROB in lieu of LC No 145 (Chennai-Mumbai lane) at km 316/01 between Muddanur and Mangapatnam station on Renigunta-Guntakal section in YSR District	0	Initial stage	0	0
8	ROB at Battala bazar (Kazipet-Vijayawada section)	Construction of ROB in lieu of LC No 62/T at Battala Bazar in Warangal town limits at railway km 376/2-4 of Kazipet-Vijayawada section on Hanamkonda – Khammam road at km 6/8-10 in Warangal District	0	Initial stage	0	0
9	ROB at Bhanugudi Junction (Samalkot-Kakinada section)	Construction of ROB at Kakinada in lieu of LC No 7 at railway km 11/19-20 of Samalkota-Kakinada section on the road from Kakinada-Rajahmundry road at ZP Junction to NH-214 at Bhanugudi Junction in Kakinada city limits in East Godavari District	0	Initial stage	0	0
10	ROB at Kakinada (Kakinada Port Yard)	Construction of ROB in lieu of LC No 13 at km 166/4-5 in Kakinada Port Yard and LC No 1 at km 0/8-9 between Kakinada Port Yard and NFCL siding on Kakinada-Rajanagaram (ADB) road in East Godavari District.	0	Initial stage	0	0
SUB TOTAL (In Initial Stages)					19.60	0
GRAND TOTAL					410.07	398.80

Annexure – 4.3
(Reference to paragraph 4.1.6.1 page 70)

**Instances of bridge proper complete but approaches incomplete
and vice versa etc.**

ROB	Expenditure incurred (as reported by Department) (₹ in crore)	Brief Description
ROB at Dwarapudi	6.70	Tenders were floated and work was awarded (November 2009), prior to completion of land acquisition, which is now sub-judice. The bridge proper is completed, while approaches are still incomplete (June 2012).
ROB at Rajampet	10.88	The work was awarded in June 2007, without completion of land acquisition. The Bridge proper was completed however, the approaches are still incomplete (November 2011).
ROBs at Tummikapalli	3.26	The bridge proper is completed, while the approaches are still incomplete, due to land acquisition problems (July 2012).
2 nd ROB at Tadepalligudem	21.70	The bridge proper and ROB structure are complete, but approach road is incomplete due to incomplete land acquisition and a pending court case (March 2012).
ROB at Puttur	18.13	Railway Bridge proper completed, but the approaches are still incomplete due to land acquisition problem and delay in finalization of designs of the super structure and substructure of ROB approaches (August 2012).
ROB on SH-30 Renigunta	10.12	Though the work was entrusted in January 2009 with a stipulation to complete by January 2010, enormous delay was noticed in land acquisition due to which though the Bridge proper completed by Railways, the approaches remain incomplete (August 2012).
RUB at Nandalur	1.62	The railway portion of the RUB is complete, but the approaches (R&B portion) are yet to be grounded. (November 2012).
RUB at RIMS (Kadapa)	3.90	Bridge proper completed but approaches were not taken up, due to land acquisition problems (October 2012).
RUB at Puttur Town	2.30	Water gets stagnated in Subway portion for even small rains and there is interruption of traffic due to non completion of the work of construction of sump well to collect the rain water in subway and pumping the water (August 2012).
ROB at Milk Project, Vijayawada	18.98	While the ROB has been opened for traffic, works relating to service roads, side drains and pipe culverts are yet to be completed, due to non-completion of UGD pipeline by the Municipal Corporation (February 2012).
ROB at Tuni	11.27	R&B Department called for tenders in April 2007 and entrusted the work in June 2007, without completion of land acquisition and shifting of utilities, and even the communication of the combined estimate by the Railways (November 2007). In fact, the RCL was not finalised even by 2010. The approaches were completed by March 2010, and held up for want of completion of the bridge proper by the Railways (June 2012).

ROB	Expenditure incurred (as reported by Department) (₹ in crore)	Brief Description
ROB at Yerraguntla	15.91	Agreement was concluded in March 2008, before completion of land acquisition. Further, alignment of approaches was modified after opening of tenders. R&B approach portion is completed (except slabs near common piers), while the Railway portion was still incomplete (November 2011). However, a link road for one of the approaches (Proddatur side) facilitating movement of heavy traffic is not yet taken up (October 2012).
ROB at Bhalabhadrapuram	13.20	The bridge proper and ROB are complete, but the ROB is not usable due to non-shifting of HT Transmission Lines of 220 and 400 KV. As per the electricity authorities, the clearance from the ROB RCL level as 7.13 metres and 7.27 metres for the 220 and 400 KV lines, against the stipulated minimum clearances of 7.926 metres and 8.84 metres. However, the ROB records showed clearances of 9.005 metres and 9.476 metres respectively (June 2012).
ROB at Bonakal Yard	15.27	Two spans on Jaggaiahpetta side are obstructed by a 132 KV HT Transmission line, which is crossing the ROB slabs without minimum clearance over RCL. Consequently, part of the work was stopped for want of shifting of HT line (February 2012).
ROB at Anaparthi	9.87	Originally, the ROB was to be constructed at LC 413T as per RWP. Subsequently, the ROB was shifted to LC 412T (1km away) on grounds of difficulties with acquisition of land and structures in a heavily built-up area; this was accepted by the Railways with the proviso that both LCs – 412T and 413T – would be closed. However, despite completion of the ROB, the LC at 413T has not been closed (April 2012).
ROB at Lankelapalem	23.28	Although the work was entrusted in July 2006, the site was physically handed over only in April 2007; this was due to delay in the land acquisition process. Although the ROB was finally completed and opened for traffic (August 2010), the LC was not closed; reasons were not available on record (July 2012).

Annexure - 4.4
(Reference to paragraph 4.2 page 85)

Details of sugar factories under the cooperative sector

Sl. No.	Name of the CSF
1	The Kadapa Co-operative Sugars Limited, Kadapa
2	NVR&ADR Co-operative Sugars Limited, Guntur
3	The Chittoor Co-operative Sugar Limited, Chittoor
4	The Kovur Co-operative Sugars Limited, Nellore
5	The Anakapalle V.V.Ramana Co-op. Sugars Limited, Anakapalle
6	The Nizamabad Co-operative Sugars Factory Limited, Nizamabad
7	The Thandava Co-operative Sugars Limited, East Godavari District
8	Sri Venkateswara Co-operative Sugars Factory Limited, Chittoor
9	Sri Vijayarama Gajapati Co-operative Sugars Factory Limited, Vizianagaram District
10	Chodavaram Co-operative Sugars Factory Limited, Visakhapatnam
11	Etikoppaka Co-operative Sugars Factory Limited, Visakhapatnam

Annexure – 4.5
(Reference to paragraph 4.2 page 86)

Details of loans sanctioned by GoAP to Cooperative Sugar Factories

Sl. No.	Name of the CSF	Yearly Details of Loans taken by CSFs (₹ in lakh)						Total Loans	Re-payment
		2006-07	2007-08	2008-09	2009-10	2010-11	2011-12		
1	The Kadapa Co-operative Sugars Limited, Kadapa	700.00	502.56	-	-	-	-	1202.56	Nil
2	NVR & ADR Co-operative Sugars Limited, Guntur	-	-	-	-	749.00	-	749.00	Nil
3	The Chittoor Co-operative Sugar Limited, Chittoor	-	-	-	-	350.00	2356.63	2706.63	Nil
4	The Kovur Co-operative Sugars Limited, Nellore	-	-	-	-	688.00	962.63	1650.63	Nil
5	The Anakapalle V.V.Ramana Co-op. Sugars Limited, Anakapalle	-	-	-	-	30.22	609.71	639.93	Nil
6	The Nizamabad Co-operative Sugars Factory Limited, Nizamabad	-	-	-	-	558.00	-	558.00	Nil
7	The Thandava Co-operative Sugars Limited, East Godavari District	-	-	-	-	-	373.52	373.52	Nil
8	Sri Venkateswara Co-operative Sugars Factory Limited, Chittoor	-	-	-	-	-	1333.37	1333.37	Nil
	Total Amount	700.00	502.56	-	-	2375.22	5635.86	9213.64	Nil

Annexure – 4.6
(Reference to paragraph 4.2 page 87)
Statement showing Profit and Loss of
Cooperative Sugar Factories from 2007-08 to 2011-12

(₹ in lakh)

Sl. No.	Name of the C.S.F	2007-08	2008-09	2009-10	2010-11	2011-12	Accumulated losses as on 31 March 2012
1	The Kadapa Co-operative Sugars Ltd, Kadapa	(-) 699.42	(-) 48.94	(-) 150.50	(-) 165.40	---	2801.12 (31.03.2011)
2	NVR & ADR Co-operative Sugars Limited, Guntur	(-) 456.01	(-) 341.87	(-) 45.93	(-) 180.39	---	2982.90 (31.03.2011)
3	The Chittoor Co-operative Sugar Ltd. Chittoor	(-)1252.04	(+)285.67	(-) 667.93	(-)1711.88	(-) 936.00	9365.50
4	The Kovur Co-operative Sugars Limited, Nellore	(-)1938.81	(-) 345.02	(-) 611.14	(-)1187.04	(-) 681.00	9920.70
5	The Anakapalle V.V.Ramana Co-op. Sugars Ltd.,Anakapalle	(-) 151.12	(-) 46.97	(-) 296.36	(-) 304.23	(-) 450.33	3977.19
6	The Nizamabad Co-operative Sugars Factory Ltd, Nizamabad	(-) 943.09	(-) 261.68	(-) 353.42	(-) 454.33	---	6281.30 (31.03.2011)
7	The Thandava Co-operative Sugars Limited, East Godavari District	(-) 688.20	(+)365.90	(+)129.66	(+) 28.16	---	2338.75 (31.03.2011)
8	Sri Venkateswara Co-operative Sugars Factory Ltd, Chittoor	(-)1115.48	(+)760.20	(-) 90.81	(-) 811.65	---	5274.92 (31.03.2011)
	Total						42942.38