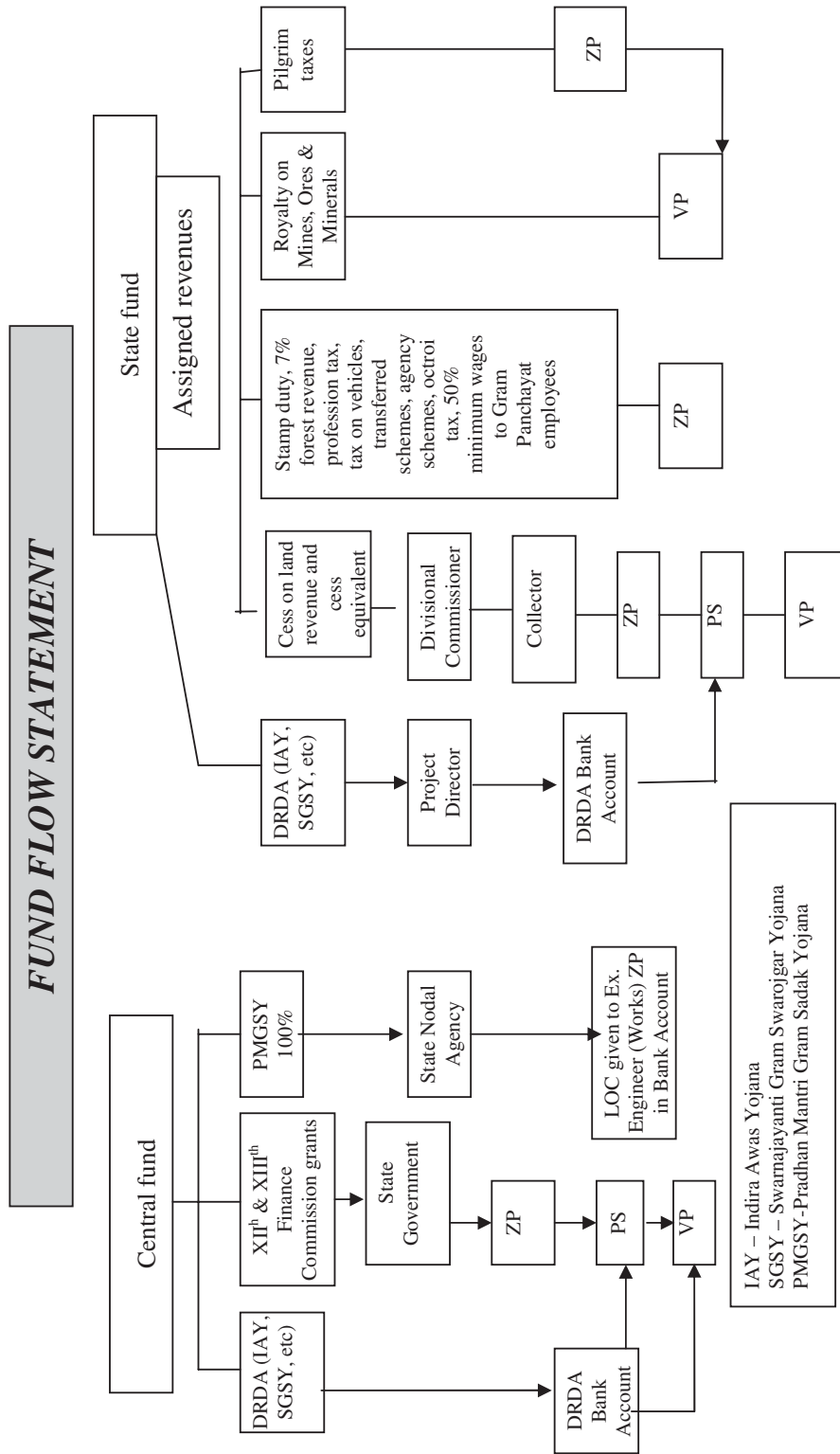


# APPENDICES

**APPENDIX I**

(Reference: Paragraph 1.4.4 ; Page 3 )



## APPENDIX II

(Reference: Paragraph 1.7.3; Page 6)

### Details of expenditure on transferred schemes, agency schemes and Zilla Parishad's Own Schemes for the year 2010-11

(₹ in crore)

Sr. No.	Name of Zilla Parishad	Expenditure on Transferred Schemes	Expenditure on Agency Schemes	Expenditure on ZPs Own Schemes	Total Expenditure
1	AHMEDNAGAR	797.00	53.00	47.00	897.00
2	AKOLA	289.90	46.10	14.31	350.31
3	AMRAVATI	495.94	59.50	33.19	588.63
4	AURANGABAD	477.29	47.11	60.22	584.62
5	BHANDARA	251.50	25.80	30.87	308.17
6	BULDHANA	516.00	61.00	462.00	1039.00
7	CHANDRAPUR	841.96	91.88	86.31	1020.15
8	DHULE	312.84	32.68	28.54	374.06
9	GADCHIROLI	287.86	33.39	8.82	330.07
10	GONDIA	530.70	68.07	64.79	663.56
11	HINGOLI	224.10	13.76	2.77	240.63
12	JALGAON	559.06	137.24	509.84	1206.14
13	JALNA	304.66	29.86	9.66	344.18
14	KOLHAPUR	619.52	52.63	16.68	688.83
15	LATUR	460.83	31.78	7.50	500.11
16	NAGPUR	873.65	110.61	52.13	1036.39
17	NANDED	528.12	57.17	3.33	588.62
18	NANDURBAR	248.49	43.36	19.91	311.76
19	NASHIK	793.38	56.83	35.57	885.78
20	OSMANABAD	360.11	23.49	3.37	386.97
21	PARBHANI	316.24	33.10	3.23	352.57
22	PUNE	779.91	97.65	552.46	1430.02
23	RATNAGIRI	475.51	38.04	23.01	536.56
24	RAIGAD	452.26	47.66	43.64	543.56
25	SANGLI	530.31	41.80	6.27	578.38
26	SATARA	648.25	62.35	18.93	729.53
27	SINDHUDURG	310.55	26.00	17.91	354.46
28	SOLAPUR	1251.78	92.22	51.03	1395.03
29	THANE	667.97	60.06	44.41	772.44
30	WARDHA	273.68	44.49	219.47	537.64
31	WASHIM	201.60	26.15	3.05	230.80
	<b>Total</b>	<b>15680.97</b>	<b>1644.78</b>	<b>2480.22</b>	<b>19805.97</b>

(Source: Information received from CAFOs of respective ZPs)

### Appendix III

(Reference : Paragraph 2.1.7.2, Page No. 17)

#### Non-reconciliation of cash book balances and bank balances as on 31 March 2011

Sl. No.	Name of the cash book	Cash book balance	Bank balance	Difference	Reconciliation done up to	Arrears in reconciliation as on 31.3.2011
		(In ₹)				
1	District fund	136143238.2	212430080.8	76286842.60	March 2008	3 years
2	Agency scheme	30489365.34	117020420.3	86531055.04	March 2006	5 years
3	Maintenance and repair	1081066.2	977120.2	-103946	January 2007	4 years and 2 months
4	MP fund Shri Waghmare	473368	417287	-56081	March 2009	2 years
5	MP fund Shri Joshi	485918	259238	-226680	September 2005	5 years 6 months
6	MP fund Shri Deshpande	72610	75358	2748	March 2009	2 years
7	MP fund Shri Goyal	57726	74357	16631	March 2008	3 years
8	MP fund Shri Bajaj	7319974	10121432	2801458	March 2008	3 years
9	MP fund Shri Gawai	33867	34282	415	March 2009	2 years
10	MP fund Shri Darda	36028	35973	-55	March 2009	2 years
11	Sampoorna Rural Emp Scheme	123405	125582	2177	March 2007	4 years

## Appendix IV

(Reference : Paragraph 2.1.8.4, Page No. 21)

### Block-wise position of the construction of Jalpurty Irrigation wells and expenditure incurred in Wardha district

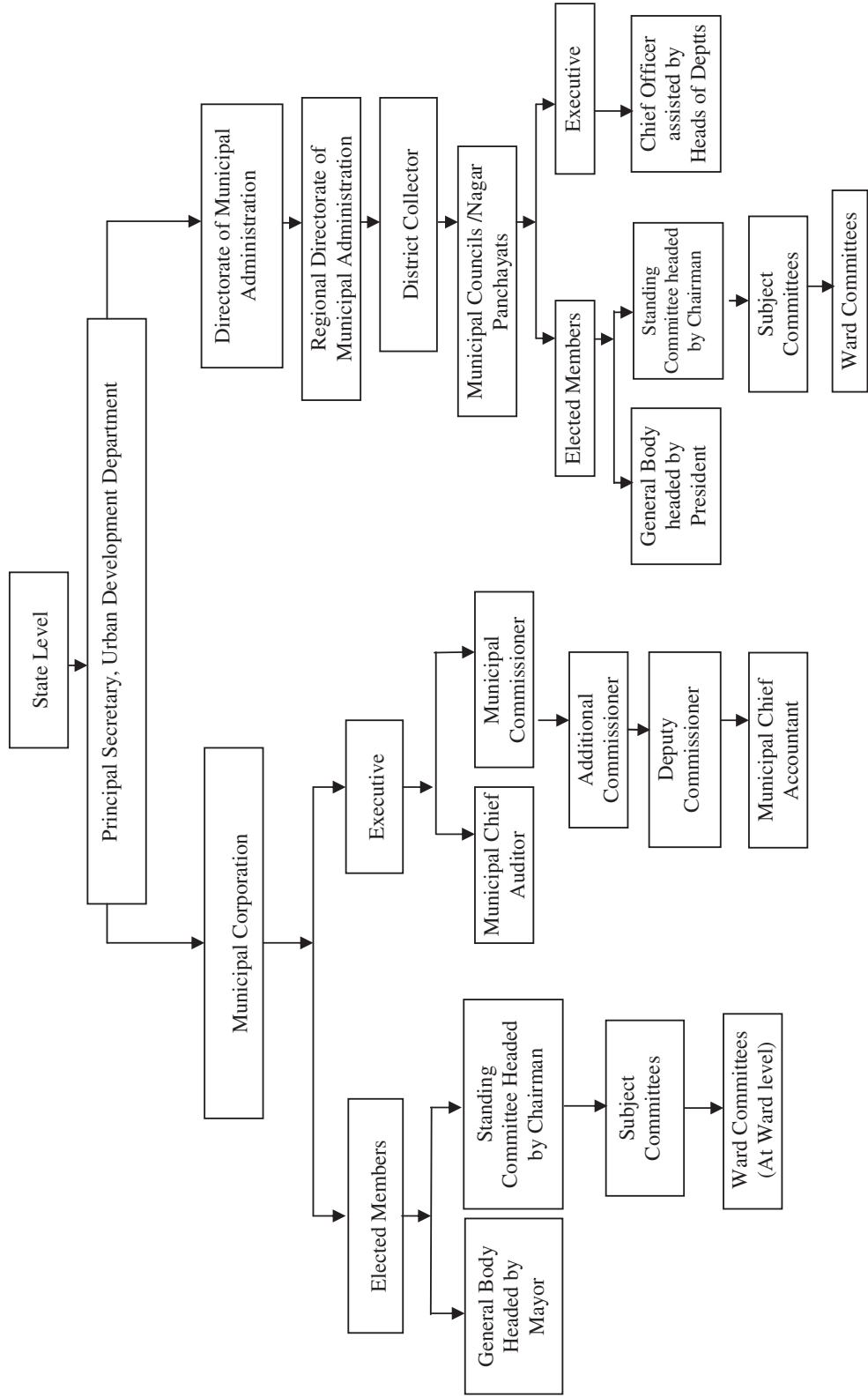
(₹ in lakh)

Sr. No.	Taluka	Sanctioned Target	No. of agreements executed with beneficiaries	No. of works started	No. of wells completed	Grant received	Expenditure incurred	Unspent grant lying with BDO
1	Wardha	1005	942	697	358	692.5	580.32	112.18
2	Selu	1001	895	605	355	503.5	472.69	30.81
3	Deoli	1028	893	644	350	619.5	562.08	57.42
4	Arvi	1011	872	645	235	458.5	458.5	--
5	Hinganghat	1004	737	737	541	753.5	654.84	98.67
6	Samudrapur	943	857	695	509	633.43	604.72	28.71
7	Ashti	987	836	651	191	468.5	418.08	50.42
8	Karanja	970	870	663	205	449.5	449.5	--
<b>TOTAL</b>		<b>7949</b>	<b>6902</b>	<b>5337</b>	<b>2744</b>	<b>4578.93</b>	<b>4200.73</b>	<b>378.21</b>

## Appendix V

(Reference: Paragraph 4.3.1; Page 34)

### Organisational Structure



## Appendix VI

(Reference: Paragraph 4.4.5; Page 35)

### Financial position of Municipal Corporations

(₹ in crore)

Sr. No.	Name of the Corporations	2008-09		2009-10		2010-11	
		Receipts	Expenditure	Receipts	Expenditure	Receipts	Expenditure
1	Ahmednagar	106.40	121.90	115.50	100.80	140.58	118.54
2	Akola	117.40	118.89	245.85	192.16	137.55	182.24
3	Amravati	93.22	96.78	156.80	138.87	124.55	113.43
4	Aurangabad	244.47	251.72	242.82	248.11	263.51	264.42
5	Bhivandi	242.03	236.77	409.21	187.03	227.08	265.93
6	MCGM	15658.44	15709.16	19035.16	18972.82	19053.07	17683.94
7	Dhule	69.82	76.21	109.93	100.32	106.73	96.30
8	Jalgaon	104.46	104.53	111.21	111.15	128.24	128.14
9	Kalyan-Dombivli	439.46	565.64	569.46	598.97	749.79	704.39
10	Kolhapur	124.38	120.30	139.04	155.80	184.33	182.85
11	Malegaon	63.84	61.44	151.39	123.35	129.01	134.08
12	Mira Bhayander	267.99	248.94	332.90	267.52	413.65	361.05
13	Nagpur	508.96	507.98	654.71	652.89	807.79	833.07
14	Nanded Waghala	427.20	425.00	385.39	311.05	348.78	367.11
15	Nashik	516.80	519.64	509.75	570.57	665.53	647.47
16	Navi Mumbai	735.32	650.54	823.63	916.26	1011.38	727.18
17	Pimpri Chinchwad	1575.31	1786.02	1281.34	996.58	1576.10	1013.10
18	Pune	1455.28	1469.83	2031.64	2190.85	2327.37	2062.29
19	Sangli	107.54	101.23	86.70	82.01	116.05	108.73
20	Solapur	144.45	144.45	162.52	196.43	364.40	305.08
21	Thane	793.06	806.36	1074.62	1003.15	1038.88	1019.08
22	Ulhasnagar	177.00	155.00	230.51	191.32	222.58	239.57
	<b>Total</b>	<b>23972.83</b>	<b>24278.33</b>	<b>28860.08</b>	<b>28308.01</b>	<b>30136.95</b>	<b>27557.99</b>

(Source: Information received from all Corporations)

## Appendix VII

(Reference: Paragraph 4.4.7; Page 36)

### Statement of expenditure of all Municipal Corporations during the period 2006-07 to 2010-11

(₹ in crore)

Municipal Corporation	2006-07		2007-08		2008-09		2009-10		2010-11	
	Total Expenditure	Percentage to total	Total Expenditure	Percentage to total	Total Expenditure	Percentage to total	Total Expenditure	Percentage to total	Total Expenditure	Percentage to total
1. Administration	4265	28.78	4741	29.05	4735	19.50	4674	16.51	6700	24.31
(a) Establishment										
(b) Others	209	1.41	196	1.20	850	3.50	1692	5.98	613	2.22
2. Recovery of taxes	45	0.30	20	0.12	131	0.54	0	0	0	0
3. Street lighting	274	1.85	235	1.44	368	1.52	321	1.13	449	1.63
4. Water Supply	1410	9.51	1362	8.35	1857	7.65	1154	4.08	3700	13.43
5. Public Security	42	0.28	190	1.16	164	0.68	74	0.26	117	0.42
6. Public Health	651	4.39	1383	8.48	1736	7.15	572	2.02	1187	4.31
7. Drainage and sewerage	1047	7.07	1207	7.40	1121	4.62	506	1.79	1163	4.22
8. Construction works	1462	9.87	3540	21.69	5048	20.79	7082	25.02	3505	12.72
9. Transport	439	2.96	30	0.18	69	0.28	104	0.37	97	0.35
10. Education	289	1.95	793	4.86	1182	4.87	477	1.68	777	2.82
11. Expenditure on weaker sections	58	0.39	402	2.46	541	2.23	237	0.84	227	0.82
12. Extraordinary expenditure and loans extended	871	5.88	547	3.35	687	2.83	266	0.94	440	1.60
13. Other expenditure	3758	25.36	1674	10.26	5789	23.84	11149	39.38	8583	31.15
Total Col 2 to 13	10346	69.81	11383	69.75	18693	77.00	21942	77.51	20245	73.47
<b>Total expenditure</b>	<b>14820</b>	<b>100</b>	<b>16320</b>	<b>100</b>	<b>24278</b>	<b>100</b>	<b>28308</b>	<b>100</b>	<b>27558</b>	<b>100</b>

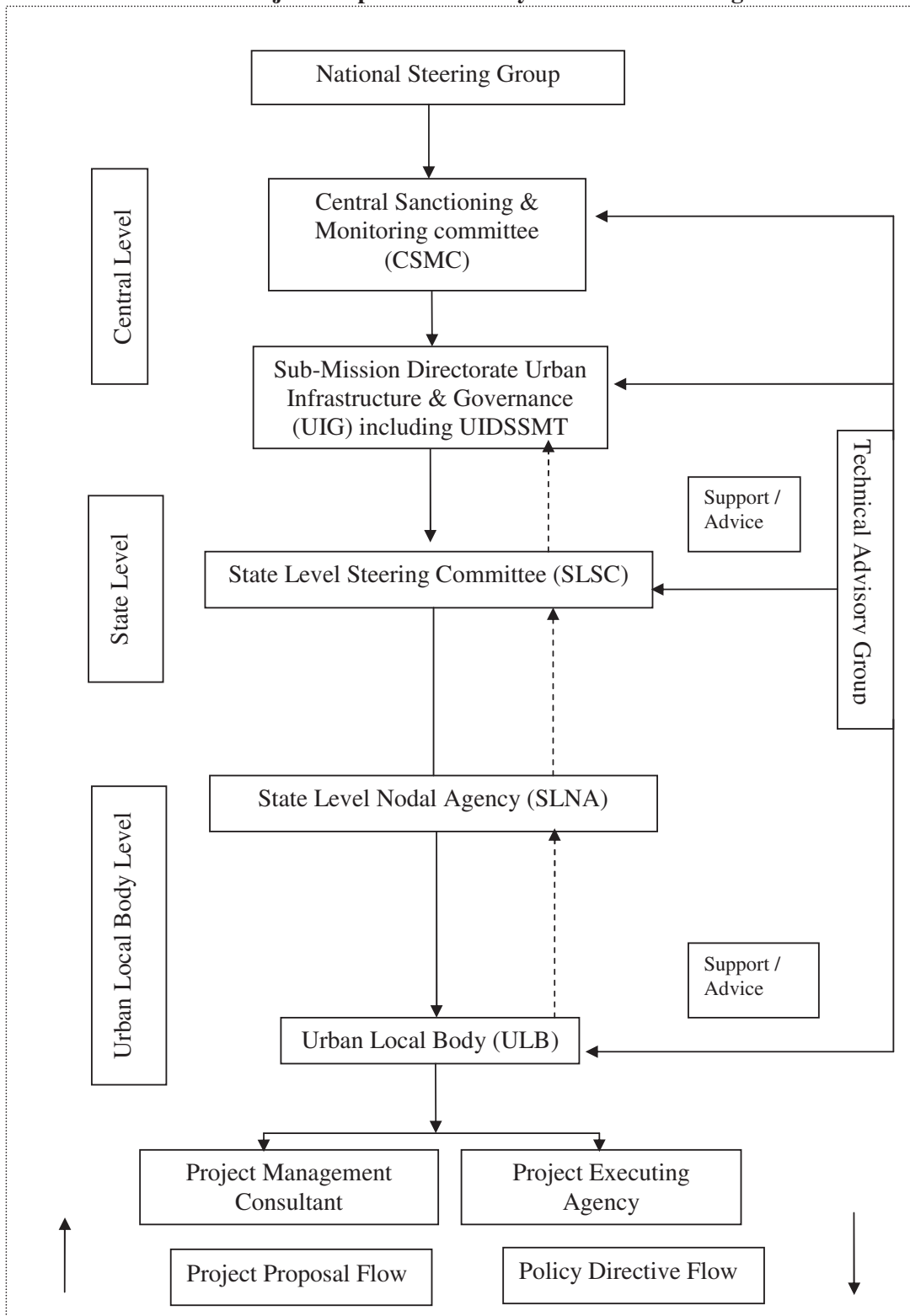
(Source : Information received from all corporations)



### Appendix VIII

(Reference : Paragraph 5.1.2, Page No. 40)

#### Project Proposal and Policy Directive Flow diagram



Source: JNNURM guidelines)

## Appendix IX

(Reference : Paragraph 5.1.5, Page 40)

### Projects selected for scrutiny under UIG & UIDSSMT

UIG			UIDSSMT		
Sr. No.	City	PROJECT	Sr. No.	City	PROJECT
1	Pune	Augmentation & Upgradation of STPs & Pumping Station	1.	Katol	Water Supply Scheme
2	Kalyan	Augmentation of Existing Water Supply Sch. in KDMC	2.	Latur	1) Construction of drains 2) Construction of roads 3) Construction of road divider
3	Nanded	Improvement to sewerage sys in North Nanded - Zone III	3.	Jalna	Water Supply Scheme
4	Nagpur	Kanhan Augmentation Scheme	4.	Parbhani	Water Supply Scheme
5	Mumbai	Middle Vaitarna Water Supply for Mumbai-IV	5.	Washim	Water Supply Scheme
6	Mumbai	Mumbai Sewage Disposal Project Stage -II priority works	6.	Chandrapur	Sewerage Scheme
7	Nagpur	Road Over Bridges - 2 numbers	7	Malegaon	Water Supply Scheme
8	Pimpri	Sewerage Proposals - 2 nos	8	Chalisgaon	Water Supply Scheme
9	Pimpri	Sewerage System Phase 2	9	Ahmednagar	Water Supply Scheme
10	Pimpri	Solid Waste Management	10	Shirdi	Sewerage Scheme
11	Pimpri	Storm Water Drainage Phase I	11	Ichalkaranji	Water Supply Scheme
12	Kalyan	Underground Sewerage for Part of KDMC	12	Kolhapur	1) Sewerage Scheme 2) Water Supply Scheme 3) Mahalaxmi Temple Development
13	Thane	Underground Sewerage Scheme Phase-1	13	Solapur	Water Supply Scheme
14	Navi Mumbai	Underground Sewerage System for NMMC			
15	Nanded	Water Supply (Nanded South)			
16	Thane	Additional 110 MLD Water supply scheme			
17	Thane	Railway System Area Traffic Improvement Scheme (SATIS)			
18	Nagpur	Expansion and Upgradation of WS Distribution Network			
19	Nagpur	Energy Audit Project for Water Supply			
20	Nagpur	Water Sector-Leak Detection, Bulk Meters & Zone Residential			
21	Pune	Rd network and urban trans.: BRT-Pilot project			
22	Pune	Subway on Westerly Bypass at Baner Junction			
23	Nashik	Solid waste management			
24	Nanded	Improvement to movement in Nanded – Package IIIB - Structures			
25	Nanded	River front development of north bank Zone-3			

(Source: Quarterly Progress Reports of UIG & UIDSSMT)

## Appendix X

(Reference : Paragraph 5.1.6.4; Page 43)

### Projects delayed due to non-acquisition of land

(₹ in crore)

Corporations	Name of Project/component	Approved cost of work	Month of sanction of project	Month of completion as per DPR	Expenditure incurred	Physical progress as of March 2011. (per cent)
PCMC	Construction of STP at Sanghvi	17.90	August 2008	December 2010	5.69	5
	Storm Water Drainage Phase I	116.30	January 2009	April 2010	20.05	21
Nashik	Transfer Station with Ramp and Sanitation System	2.20	December 2006	December 2008	0	0
KDMC	100 MLD WTP Mohili	62.38	February 2009	February 2011	28.21	45
	Sewerage Pumping Station rising mains and STP in Dombivli East & West.	46.55	July 2008	May 2011	12.71	28
<b>Total</b>		<b>245.33</b>			<b>66.66</b>	

(Source: Running account bills and Quarterly Progress Reports)

## Appendix XI

(Reference : Paragraph 5.1.7.1; Page 45)

### Details of works awarded in excess of approved cost

(₹ in crore)

Sr. No.	Name of Project	Sanctioned project cost	Awarded cost	Increased cost	Percentage increased
<b>Municipal Corporation of Greater Mumbai</b>					
1	Middle Vaitarna Water Supply for Mumbai-IV	1329.50	2006.66	677.16	51
2	Mumbai Sewage Disposal Project Stage-II priority works	364.47	436.86	72.39	20
<b>Thane Municipal Corporation</b>					
3	Additional 110 MLD Water supply scheme	71.18	87.53	16.35	23
4	Railway System Area Traffic Improvement Scheme (SATIS)	23.25	29.36	6.11	26
5	Underground Sewerage Scheme Phase-1	149.57	248.17	98.60	66
<b>Navi Mumbai Municipal Corporation</b>					
6	Underground Sewerage System for NMMC	353.67	467.65	113.98	32
<b>Kalyan Dombivli Municipal Corporation</b>					
7	Underground sewerage part of KDMC	169.63	221.45	51.82	31
<b>Nagpur City Municipal Corporation</b>					
8	Expansion and Upgradation of WS Distribution Network	37.93	43.49	5.56	15
9	Energy Audit Project for Water Supply	25.04	28.90	3.86	15
10	Kanhan Augmentation Scheme	82.17	87.65	5.48	7
<b>Pune Municipal Corporation</b>					
11	Rd network and urban trans.: BRT-Pilot project	103.14	135.03	31.89	31
12	Augmentation & Upgradation of STPs & Pumping Stations	86.13	138.46	52.33	61
13	Subway on Westerly Bypass at Baner Junction	7.26	7.90	0.64	9
<b>Pimpri Chinchwad Municipal Corporation</b>					
14	Sewerage Proposals - 2 nos	119.39	139.97	20.58	17
<b>Nashik Municipal Corporation</b>					
15	Solid waste management	59.99	68.91	8.92	15
<b>Nanded-Waghala Municipal Corporation</b>					
16	Improvement to sewerage system in North Nanded - Zone III	39.31	46.77	7.46	19
17	UG Sewerage and Sewage Treatment (Nanded South)	40.93	52.26	11.33	28
18	Improvement to movement network in Nanded Package IIIB Structures	58.15	64.28	6.13	11
19	River front development or north bank Zone-3	43.13	56.87	13.74	32
<b>Total</b>		<b>3163.84</b>	<b>4368.17</b>	<b>1204.33</b>	

(Source: Quarterly Progress Reports)

## Appendix XII

(Reference : Paragraph 5.1.7.3; Page 46)

### Non-release of grants by GOI/GOM

(₹ in crore)

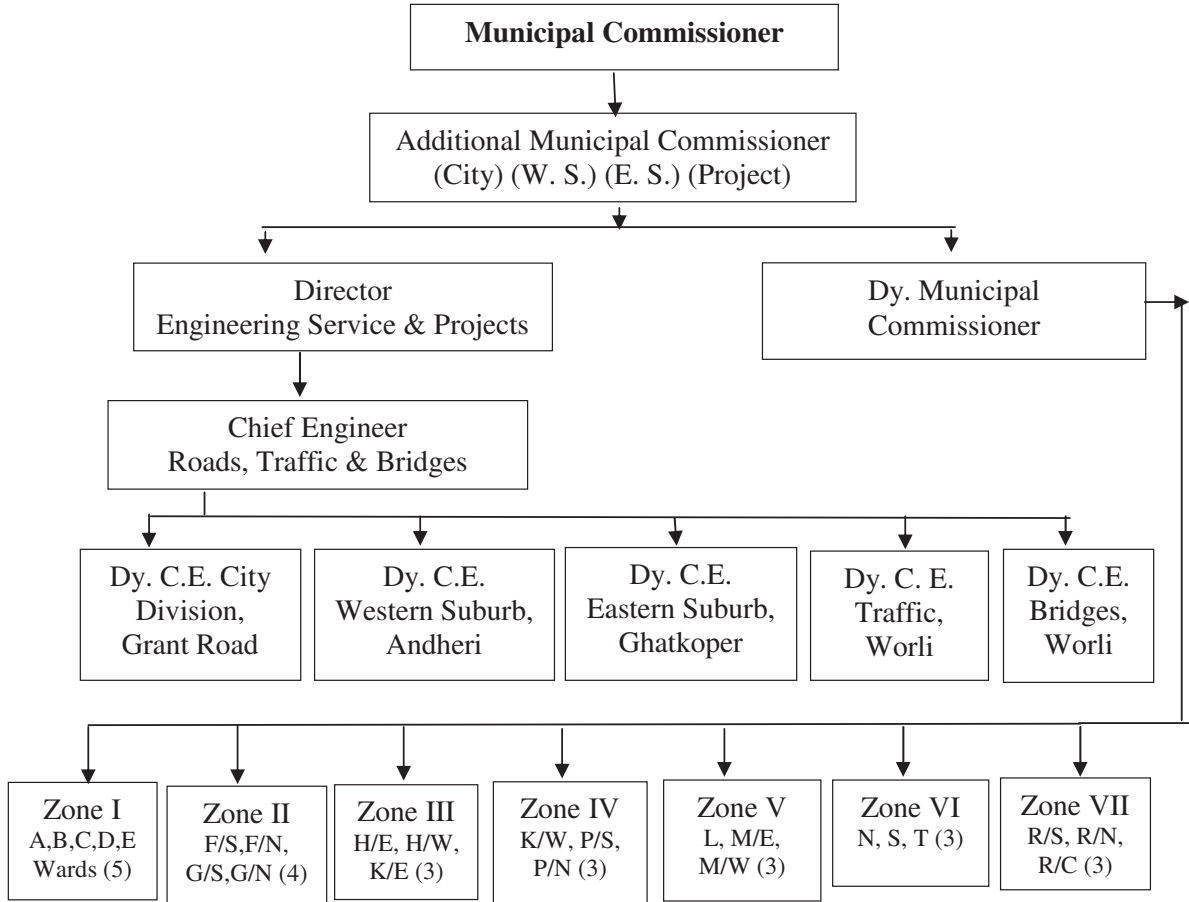
Corporations	Name of Project/component	Project cost	Date of claim	Pending claim		Reasons for non-release
				GOI	GOM	
Mumbai	MUIP Eastern freeway from POW Museum to APLR	336.13	13.09.10	29.43	12.61	Deviation from approved DPR and shortcomings like non submission of test reports of construction material as noticed in inspection of IRMA.
Pimpri Chinchwad	Water Supply Proposals (4 Nos.) for Pimpri Chinchwad.	358.62	23.03.10	44.83	17.93	Deviation from approved DPR and shortcomings like non submission of test reports of Pipes, material, Excess excavation etc. as noticed in inspection of IRMA.
Nashik	Strom Water Drain for Nashik Municipal Corporation.	310.31	01.02.11	38.79	14.52	Non achievement of reforms
Nanded	Under-ground sewerage and Sewerage Treatment ( Nanded South)	40.93	16.02.09	08.19	01.02	Non achievement of reforms
			<b>Total</b>	<b>121.24</b>	<b>46.08</b>	

(Source: Progress Report of MMRDA)

### Appendix XIII

(Reference : Paragraph 6.9.2, Page No. 87)

#### Organisational set up of MCGM- Road repairs



### Appendix XIV

(Reference : Paragraph 6.9.7.6; Page No. 92)

#### Details of works awarded by variations directly to the ongoing contracts during the year 2007-08 to 2010-11 without inviting tenders

(₹ in crore)

Division	No. of works awarded		No. of works varied		Original contract cost		Additional contract cost		Revised contract cost	
	CC	Asphalt	CC	Asphalt	CC	Asphalt	CC	Asphalt	CC	Asphalt
City	6	18	4	10	192.24	147.89	91.6	65.49	283.84	213.38
Western	24	14	16	11	327.14	159.38	193.68	90.51	520.82	249.89
Eastern	16	10	10	8	235.67	98.43	183.81	77.22	419.48	175.65
<b>Total</b>	<b>46</b>	<b>42</b>	<b>30</b>	<b>29</b>	<b>755.05</b>	<b>405.70</b>	<b>469.09</b>	<b>233.22</b>	<b>1224.14</b>	<b>638.92</b>
<b>Grand Total</b>	<b>88</b>		<b>59</b>		<b>1160.75</b>		<b>702.31</b>		<b>1863.06</b>	

Variation to the original cost for CC road 62 per cent

Variation to the original cost for Asphalt road 57 per cent