

**Annexure – 1**

**(Referred to in paragraph 1.7)**

**Statement showing particulars of up to date paid-up capital, loans outstanding and Manpower as on 31 March 2010 in respect of Government companies and Statutory corporations**

Sl. No.	Sector & Name of the Company	Name of the Department	Month and year of incorporation	Paid-up Capital <sup>1</sup>			Loans <sup>2</sup> outstanding at the close of 2009-10			Debt equity ratio for 2009-10 (Previous year)	Manpower (No. of employees) (as on 31.3.2010)		
				State Government	Central Government	Others	State Government	Central Government	Others			Total	
(1)	(2)	(3)	(4)	5 (a)	5 (b)	5 (c)	5 (d)	5 (e)	6 (a)	6 (b)	6 (c)	(7)	(8)
<b>A. Working Government Companies</b>													
AGRICULTURE & ALLIED													
1.	Bihar Rajya Beej Nigam Limited (BRBNL)	Agriculture	18.7.1977	2.27 (0.65)	1.22 (0.02)	0.22 (0.03)	3.71 (0.70)	-	-	-	-	--	89
2.	Bihar Rajya Matasya Vikas Nigam Ltd. (BRMVNL)	Animal Husbandry & Fisheries	23.3.1980	3.00 (1.25)	-	-	3.00 (1.25)	2.63	0.03	-	2.66	0.89:1 (0.89:1)	41
3.	SCADA Agro Business Co. Limited (SABCL)	Water Resources		-	-	0.05	0.05	-	-	-	-	--	NA
<b>Sector wise total</b>				<b>5.27 (1.90)</b>	<b>1.22 (0.02)</b>	<b>0.27 (0.03)</b>	<b>6.76 (1.95)</b>	<b>2.63</b>	<b>0.03</b>	<b>-</b>	<b>2.66</b>	<b>-</b>	<b>130</b>
FINANCE													
4.	Bihar State Credit & Investment Corporation Limited. (BSCICL)	Industry	30.1.1975	15.12 (0.12)	-	-	15.12 (0.12)	20.48	-	37.01	57.49	3.80:1 (3.80:1)	54
5.	Bihar State Backward Classes Finance & Development Corporation Limited (BSBCFDCL)	Welfare	17.6.1993	17.36 (4.00)	-	-	17.36 (4.00)	-	21.56	-	21.56	1.24:1 (1.30:1)	16
6.	Bihar State Minorities Finance Corporation Limited. (BSMFCL)	Minority Welfare	22.3.1984	11.50	-	-	11.50	-	-	34.99	34.99	3.04:1 (3.04:1)	27
7.	Bihar State Film Development & Finance Corporation Limited. (BSFDCL)	Industry	6.3.1983	2.00 (1.00)	-	-	2.00 (1.00)	0.15	-	-	0.15	0.08:1 (0.07:1)	08
<b>Sector wise total</b>				<b>45.98 (5.12)</b>	<b>-</b>	<b>-</b>	<b>45.98 (5.12)</b>	<b>20.63</b>	<b>21.56</b>	<b>72.00</b>	<b>114.19</b>	<b>-</b>	<b>105</b>
INFRASTRUCTURE													
8.	Bihar Police Building Construction Corporation Limited (BPBCCCL)	Home (police)	26.6.1974	0.10 (0.00)	-	-	0.10 (0.00)	-	0.43	-	0.43	4.30:1 (4.30:1)	292
9.	Bihar Rajya Pul Nirman Nigam Limited (BRPNL)	Road Construction	11.6.1975	3.50	-	-	3.50	-	-	-	-	-	513

<sup>1</sup> ₹ 0.01 Lakh

**Audit Report (Commercial) for the year ended 31 March 2010**

(Figures in column 5 (a) to 6 (c) are ₹ in crore)

Sl. No.	Sector & Name of the Company	Name of the Department	Month and year of incorporation	Paid-up Capital <sup>s</sup>			Loans <sup>**</sup> outstanding at the close of 2009-10			Debt equity ratio for 2009-10 (Previous year)	Manpower (No. of employees) (as on 31.3.2010)		
				State Government	Central Government	Others	Total	State Government	Central Government			Others	Total
(1)	(2)	(3)	(4)	5 (a)	5 (b)	5 (c)	5 (d)	5 (e)	6 (a)	6 (b)	6 (c)	(7)	(8)
10.	Bihar Health Project Development Corporation Limited. (BHPDCL)	Building Construction	20.3.2008	0.06	-	-	0.06	-	-	-	-	-	09
11.	Bihar State Road Development Corporation Limited (BSRDCL)	Road Construction	20.04.2009	20.00	-	-	20.00	-	-	-	-	-	105
12.	Bihar Urban Infrastructure Development Corporation Limited (BUIDCL)	Urban Development & Housing	16.06.2009	5.00	-	-	5.00	-	-	-	-	-	11
<b>Sector wise total</b>				<b>28.66 (0.00)</b>	<b>-</b>	<b>-</b>	<b>28.66 (0.00)</b>	<b>-</b>	<b>0.43</b>	<b>-</b>	<b>0.43</b>	<b>-</b>	<b>930</b>
<b>MANUFACTURING</b>													
13.	Bihar State Electronics Development Corporation Limited (BSEDCL)	Information Technology	21.2.1978	5.67 (1.59)	-	-	5.67 (1.59)	5.93	-	-	5.93	1.05:1 (1.05:1)	66
14.	Bihar State Mineral Development Corporation Limited (BSMDCL)	Mines & Geology	12.6.1972	9.97	-	-	9.97	-	-	-	-	-	15
15.	Bihar State Beverages Corporation Limited (BSBCL)	Excise	25.5.2006	5.00	-	-	5.00	-	-	-	-	-	308
16.	Bihar Air Products Limited. (BAPL)	Industry	-	-	-	0.80	0.80	-	-	0.60	0.60	(0.75:1) (0.75:1)	30
<b>Sector wise total</b>				<b>20.64 (1.59)</b>	<b>-</b>	<b>0.80</b>	<b>21.44 (1.59)</b>	<b>5.93</b>	<b>-</b>	<b>0.60</b>	<b>6.53</b>	<b>-</b>	<b>419</b>
<b>POWER</b>													
17.	Bihar State Hydro Electro Power Corporation Limited (BSHPCL)	Energy	31.3.1982	99.04	-	-	99.04	176.37	-	75.80	252.17	2.55:1 (2.20:1)	137
<b>Sector wise total</b>				<b>99.04</b>	<b>-</b>	<b>-</b>	<b>99.04</b>	<b>176.37</b>	<b>-</b>	<b>75.80</b>	<b>252.17</b>	<b>-</b>	<b>137</b>
<b>SERVICES</b>													
18.	Bihar State Tourism Development Corporation Limited (BSTDCL)	Tourism	28.11.1980	5.00	-	-	5.00	-	-	-	-	-	211
19.	Bihar State Food & Civil Supplies Corporation Limited (BSFCSCL)	Food & Civil Supplies	22.4.1973	5.27	-	-	5.27	118.64	1.94	-	120.58	22.88:1 (22.88:1)	1389
<b>Sector wise total</b>				<b>10.27</b>	<b>-</b>	<b>-</b>	<b>10.27</b>	<b>118.64</b>	<b>1.94</b>	<b>-</b>	<b>120.58</b>	<b>-</b>	<b>1600</b>
<b>MISCELLANEOUS</b>													
20.	Bihar State Forest Development Corporation Limited (BSFDCL)	Forest & Environment	10.2.1975	1.75	0.54	-	2.29	-	-	-	-	-	NA
21.	Bihar State Text Book Publishing Corporation Ltd. (BSTBPCL)	Education	2.4.1965	0.36	-	0.12	0.48	-	-	-	-	-	197

(Figures in column 5 (a) to 6 (c) are ₹ in crore)

Sl. No.	Sector & Name of the Company	Name of the Department	Month and year of incorporation	Paid-up Capital <sup>5</sup>		Total	Loans <sup>6*</sup> outstanding at the close of 2009-10			Debt equity ratio for 2009-10 (Previous year)	Manpower (No. of employees) (as on 31.3.2010)		
				State Government	Central Government		Others	State Government	Central Government			Others	Total
(1)	(2)	(3)	(4)	5 (a)	5 (b)	5 (c)	5 (d)	5 (e)	6 (a)	6 (b)	6 (c)	(7)	(8)
<b>Sector wise total</b>				2.11	0.54	0.12	2.77	-	-	-	-	-	197
<b>Total A (All sector wise working Government companies)</b>				211.97 (8.61)	1.76 (0.02)	1.19 (0.03)	214.92 (8.66)	324.20	23.96	148.40	496.56	-	3518
<b>B. Working Statutory corporations</b>													
<b>FINANCE</b>													
1.	Bihar State Financial Corporation (BSFC)	Industry	2.11.1954	39.95	37.70	0.19	77.84	228.47	-	35.52	263.99	3.39:1 (4.00:1)	307
<b>Sector wise total</b>				39.95	37.70	0.19	77.84	228.47	-	35.52	263.99	-	307
2.	Bihar State Electricity Board (BSFB)	Energy	1.4.1958	-	-	-	-	7151.26	32.49	245.82	7429.57	-	13813
<b>Sector wise total</b>				-	-	-	-	7151.26	32.49	245.82	7429.57	-	13813
3.	Bihar State Road Transport Corporation (BSRTC)	Transport	1.5.1959	74.75	26.52	-	101.27	297.11	-	-	297.11	2.93:1 (0.98:1)	2006
4.	Bihar State Warehousing Corporation (BSWC)	Co-Operative	29.3.1957	3.21	-	3.21	6.42	-	-	2.39	2.39	0.37:1 (0.63:1)	247
<b>Sector wise total</b>				77.96	26.52	3.21	107.69	297.11	-	2.39	299.50	-	2253
<b>Total B (All sector wise working Statutory corporations)</b>				117.91	64.22	3.40	185.53	7676.84	32.49	283.73	7993.06	-	16373
<b>Grand Total (A + B)</b>				329.88 (8.61)	65.98 (0.02)	4.59 (0.03)	400.45 (8.66)	8001.04	56.45	432.13	8489.62	-	19891
<b>C. Non working Government companies</b>													
<b>AGRICULTURE &amp; ALLIED</b>													
1.	Bihar State Water Development Corporation Limited (BSWDCL)	Water Resources	12.4.1973	10.00	-	-	10.00	49.68	-	-	49.68	4.97:1 (4.97:1)	NA
2.	Bihar State Dairy Corporation Limited (BSDCL)	Animal Husbandry & Fisheries	13.3.1972	6.72	-	-	6.72	1.75	-	-	1.75	0.26:1 (0.26:1)	-
3.	Bihar Hill Area Lift Irrigation Corporation Limited (BSHADCL)	Minor Irrigation	3.6.1975	10.82	-	-	10.82	8.55	-	-	8.55	0.86:1 (0.86:1)	NA
4.	Bihar State Agro Industries Development Corporation Limited (BSAIDCL)	Agriculture	28.4.1966	7.64 (0.07)	-	-	7.64 (0.07)	12.60	-	-	12.60	1.65:1 (1.65:1)	283
5.	Bihar State Fruit & Vegetables Development Corporation Limited (BSFVDCCL)	Agriculture	8.10.1980	1.61	0.49	-	2.10	0.42	0.70	-	1.12	0.53:1 (0.53:1)	10
6.	Bihar Insecticide Limited (BIL)	Industry	27.2.1983	-	-	2.96 (2.39)	2.96 (2.39)	-	-	1.54	1.54	0.52:1 (0.52:1)	69
7.	SCADA Agro Business Khagaul Ltd. (SABLIK)	Agriculture	NA	NA	NA	NA	NA	NA	NA	NA	NA	NA	NA

**Audit Report (Commercial) for the year ended 31 March 2010**

(Figures in column 5 (a) to 6 (c) are ₹ in crore)

Sl. No.	Sector & Name of the Company	Name of the Department	Month and year of incorporation	Paid-up Capital <sup>5</sup>			Loans <sup>**</sup> outstanding at the close of 2009-10			Debt equity ratio for 2009-10 (Previous year)	Manpower (No. of employees) (as on 31.3.2010)		
				State Government	Central Government	Others	Total	State Government	Central Government			Others	Total
(1)	(2)	(3)	(4)	5 (a)	5 (b)	5 (c)	5 (d)	5 (e)	6 (a)	6 (b)	6 (c)	(7)	(8)
8.	SCADA Agro Business Ltd., Dehri. (SABLD)	Agriculture	NA	NA	NA	NA	NA	NA	NA	NA	NA	NA	NA
9.	SCADA Agro Business Ltd. Arrah (SABLA)	Agriculture	NA	NA	NA	NA	NA	NA	NA	NA	NA	NA	NA
10.	SCADA Agro Business Ltd. Aurangabad (SABLA)	Agriculture	NA	NA	NA	NA	NA	NA	NA	NA	NA	NA	NA
11.	SCADA Agro Business Ltd. Mohania (SABLM)	Agriculture	NA	NA	NA	NA	NA	NA	NA	NA	NA	NA	NA
12.	SCADA Agro Forestry Company limited Khagaul. (SAFCLK)	Agriculture	NA	NA	NA	NA	NA	NA	NA	NA	NA	NA	NA
<b>Sector wise total</b>				<b>36.79 (0.07)</b>	<b>0.49</b>	<b>2.96 (2.39)</b>	<b>40.24 (2.46)</b>	<b>73.00</b>	<b>0.70</b>	<b>1.54</b>	<b>75.24</b>	<b>-</b>	<b>362</b>
FINANCE													
13.	Bihar Panchayati Raj Finance Corporation Limited (BPRFCL)	Panchayati Raj	20.4.1974	1.44 (0.38)	--	--	1.44 (0.38)	-	-	-	-	-	NA
14.	Bihar State Handloom and Handicrafts Corporation Limited (BSHHCL)	Industry	21.5.1974	10.00	--	--	10.00	1.16	-	-	1.16	0.12:1 (0.12:1)	NA
15.	Bihar State Small Industries Corporation Limited (BSSICL)	Industry	29.10.1961	7.18	-	-	7.18	10.40	-	1.83	12.23	1.70:1 (1.70:1)	49
16.	Bihar State Industrial Development Corporation Limited (BSIDCL)	Industry	5.11.1960	14.04	-	-	14.04	66.54	-	0.02	66.56	4.74:1 (4.44:1)	823
<b>Sector wise total</b>				<b>32.66 (0.38)</b>	<b>-</b>	<b>-</b>	<b>32.66 (0.38)</b>	<b>78.10</b>	<b>-</b>	<b>1.85</b>	<b>79.95</b>	<b>-</b>	<b>872</b>
INFRASTRUCTURE													
17.	Bihar State Construction Corporation Limited (BSCCL)	Water Resources	22.8.1974	11.00	-	-	11.00	-	-	-	-	-	1086
<b>Sector wise total</b>				<b>11.00</b>	<b>-</b>	<b>-</b>	<b>11.00</b>	<b>-</b>	<b>-</b>	<b>-</b>	<b>-</b>	<b>-</b>	<b>1086</b>
MANUFACTURING													
18.	Bihar Solvent & Chemicals Limited (BS&CL)	Forest & Environment	Aug-79	0.20	-	0.88	1.08	-	-	0.89	0.89	0.82:1 (0.82:1)	NA
19.	Magadh Mineral Limited (MML)	Industry	22.11.1984	-	-	0.36 (0.36)	0.36 (0.36)	-	-	0.47	0.47	1.31:1 (1.31:1)	05
20.	Kumardhubi Metal Casting & Engineering Limited (KMC&EL)	Industry	25.10.1983	-	-	2.17	2.17	-	-	6.63	6.63	3.06:1 (3.06:1)	NA
21.	Betrom Video System Limited (BVSL)	Industry	19.9.1984	-	-	5.05	5.05	-	-	4.51	4.51	0.89 (0.89:1)	NA
22.	Betrom Mining System Limited (BMSL)	Industry	30.1.1986	-	-	2.48	2.48	-	-	-	-	-	NA
23.	Betrom Informatics Limited (BIL)	Industry	1.3.1988	-	-	0.00 <sup>6</sup>	0.00	-	-	-	-	-	NA

2 ₹ 0.28 lakh

(Figures in column 5 (a) to 6 (c) are ₹ in crore)

Sl. No.	Sector & Name of the Company	Name of the Department	Month and year of incorporation	Paid-up Capital <sup>3</sup>			Loans <sup>4</sup> outstanding at the close of 2009-10			Debt equity ratio for 2009-10 (Previous year)	Manpower (No. of employees) (as on 31.3.2010)		
				State Government	Central Government	Others	State Government	Central Government	Others			Total	
(1)	(2)	(3)	(4)	5 (a)	5 (b)	5 (c)	5 (d)	5 (e)	6 (a)	6 (b)	6 (c)	(7)	(8)
24.	Bihar State Sugar Corporation Limited (BSSCL)	Sugar Cane	26.12.1974	20.00	-	-	20.00	322.95	-	-	322.95	16.15:1 (16.15:1)	NA
25.	Bihar State Cement Corporation Limited (BSCCL)	Industry	17.10.1981	-	-	0.00 <sup>5</sup>	0.00	0.03	-	-	0.03	42.86:1 (45.29:1)	NA
26.	Bihar State Pharmaceuticals & Chemicals Development Corporation Ltd. (BSP&CDCL)	Industry	22.2.1978	16.54 (0.78)	-	-	16.54 (0.78)	4.28	-	-	4.28	0.26:1 (4.60:1)	52
27.	Bihar Maize Product Limited (BMPL)	Industry	2.9.1982	-	-	0.74 (0.74)	0.74 (0.74)	-	-	0.02	0.02	0.03:1 (0.03:1)	NA
28.	Bihar Drugs and Chemicals Limited (BD&CL)	Industry	12.8.1983	-	-	4.00	4.00	1.28	-	-	1.28	0.32:1 (0.32:1)	NA
29.	Bihar State Textiles Corporation Limited (BSTCL)	Industry	21.2.1978	10.78	-	-	10.78	2.27	-	-	2.27	0.21:1 (0.42:1)	51
<b>Sector wise total</b>				<b>47.52 (0.78)</b>	-	<b>15.68 (1.10)</b>	<b>63.20 (1.88)</b>	<b>330.81</b>	-	<b>12.52</b>	<b>343.33</b>	-	<b>108</b>
SERVICES													
30.	Bihar State Export Corporation Limited (BSECL)	Industry	29.12.1974	2.00	-	-	2.00	1.22	-	-	1.22	0.61:1 (0.61:1)	23
<b>Sector wise total</b>				<b>2.00</b>	-	-	<b>2.00</b>	<b>1.22</b>	-	-	<b>1.22</b>	-	<b>23</b>
MISCELLANEOUS													
31.	Bihar Paper Mills Limited (BPML)	Industry	8.7.1977	-	-	7.77	7.77	-	-	10.72	10.72	1.38:1 (1.38:1)	NA
32.	Bihar State Glazed Tiles & Ceramics Limited (BSGT&CL)	Industry	2.4.1984	-	-	1.40 (0.25)	1.40 (0.25)	-	-	3.66	3.66	2.61:1 (2.61:1)	32
33.	Vishwamitra Paper Industries Limited (VPIL)	Industry	18.6.1983	-	-	1.74 (0.60)	1.74 (0.60)	-	-	0.81	0.81	0.47:1 (0.47:1)	NA
34.	Jhanchampur Paper Industries Limited (JPIL)	Industry	27.2.1982	-	-	1.49 (0.42)	1.49 (0.42)	-	-	0.46	0.46	0.31:1 (0.31:1)	13
35.	Bihar State Tannin Extract Limited (BSTEL)	Forest & environment	27.1.1984	-	-	1.57	1.57	-	-	2.14	2.14	1.36:1 (1.36:1)	NA
36.	Bihar State Finished Leathers Corporation Limited (BSFLCL)	Industry	20.4.1982	-	-	1.47	1.47	9.18	-	-	9.18	6.24:1 (6.24:1)	NA
37.	Synthetic Resins (Eastern) Limited (SREL)	Industry	14.12.1982	-	-	0.31	0.31	-	-	1.05	1.05	3.39:1 (3.39:1)	-
38.	Bhavani Active Carbon Limited (BACL)	Industry	26.3.1985	-	-	0.09	0.09	-	-	-	-	-	NA
39.	Bihar State Leather Industries Development	Industry	23.3.1974	17.40	-	-	17.40	12.43	-	1.70	14.13	0.81:1	NA

<sup>3</sup> ₹ 0.07 lakh

**Audit Report (Commercial) for the year ended 31 March 2010**

(Figures in column 5 (a) to 6 (e) are ₹ in crore)

Sl. No.	Sector & Name of the Company	Name of the Department	Month and year of incorporation	Paid-up Capital <sup>§</sup>			Loans <sup>**</sup> outstanding at the close of 2009-10			Debt equity ratio for 2009-10 (Previous year)	Mampower (No. of employees) (as on 31.3.2010)		
				State Government	Central Government	Others	Total	State Government	Central Government			Others	Total
(1)	(2)	(3)	(4)	5 (a)	5 (b)	5 (c)	5 (d)	5 (e)	6 (a)	6 (b)	6 (c)	(7)	(8)
40.	Corporation Limited (BSL/IDCL) Bihar Scooters Limited (BSL)	Industry	19.1.1978	-	-	1.63	1.63	6.09	-	-	6.09	(1.41:1)	NA
	<b>Sector wise total</b>			17.40	-	17.47 (1.27)	34.87 (1.27)	27.70	-	20.54	48.24	-	45
	<b>Total C (All sector wise non working Government companies)</b>			147.37 (1.23)	0.49	36.11 (4.76)	183.97 (5.99)	510.83	0.70	36.45	547.98	-	2496
	<b>Grand Total (A + B + C)</b>			477.25 (9.84)	66.47 (0.02)	40.70 (4.79)	584.42 (14.65)	8511.87	57.15	468.58	9037.60	-	22387

Above includes Section 619-B companies at Sr. No. 3 & 16 of working companies and Sr. No. 7 to 12 of non-working companies.

<sup>§</sup> Paid-up capital includes share application money which is appearing in brackets in column 5(a) to 5 (d)

<sup>\*\*</sup> Loans outstanding at the close of 2009-10 represent long-term loans only.

NA indicates that the information has not been provided by the respective companies.

Figures of the companies at Sl. No. A-7, A-20, C-1 to C-3, C-6 to C-14 and C-17 to 40 have been taken from the Audit Report (Commercial), Govt. of Bihar, 2008-09 as the required information has not been furnished by the respective companies.

**Annexure – 2**  
**(Referred to in paragraph 1.14)**  
**Summarised financial results of Government companies and Statutory corporations for the latest year for which accounts were finalised**

Sl. No.	Sector & Name of the Company	Period of Accounts	Year in which finalised	Net Profit/ Loss before Interest & Depreciation	Net Profit/ Interest	Depre- ciation	Net Profit/ Loss	Turn- over	Impact of Accounts Comments #	Paid up Capital	Accumulated Profit (+)/ Loss (-)	Capital employed @	Return on capital employed \$	Percentage return on capital employed
(1)	(2)	(3)	(4)	(5)	(6)	(7)	(8)	(9)	(10)	(11)	(12)			
<b>A. Working Government Companies</b>														
<b>AGRICULTURE &amp; ALLIED</b>														
1.	BRBNL	1998-99	2010-11	(-2.73)	2.77	0.07	(-35.57)	5.33	(-1).53	3.71	(-53.45)	2.90	(-2.80)	-
2.	BRMVNL	1992-93	1996-97	(-0.01)	0.17	0.04	(-0.22)	-	-	1.75	(-1.92)	1.74	(-0.05)	-
3.	SABCL	2005-06	2009-10	0.02	-	0.02	0.00 <sup>4</sup>	0.51	-	0.05	(-1.91)	1.17	0.00	-
	<b>Sector wise total</b>			<b>(-2.72)</b>	<b>2.94</b>	<b>0.13</b>	<b>(-35.79)</b>	<b>5.84</b>	<b>(-1).53</b>	<b>5.51</b>	<b>(-57.28)</b>	<b>5.81</b>	<b>(-2.85)</b>	<b>-</b>
<b>FINANCE</b>														
4.	BSCICL	2002-03	2008-09	4.40	8.55	0.04	(-4.19)	6.44	(-4).15	15.00	(-139.71)	15.66	4.36	27.84
5.	BSBCFDCL	1997-98	2006-07	0.41	0.68	0.02	(-0.29)	0.64	-	3.62	0.53	3.86	0.39	10.10
6.	BSMFCL	2006-07	2009-10	(-0.38)	0.37	0.00 <sup>5</sup>	(-0.75)	0.35	(-1).59	8.95	(-4.69)	8.95	(-0.38)	-
7.	BSFDCL	1991-92	2000-01	0.02	-	0.00 <sup>6</sup>	0.02	-	-	0.95	(-0.12)	0.88	0.02	2.27
	<b>Sector wise total</b>			<b>4.45</b>	<b>9.60</b>	<b>0.06</b>	<b>(-5.21)</b>	<b>7.43</b>	<b>(-5).74</b>	<b>28.52</b>	<b>(-143.99)</b>	<b>29.35</b>	<b>4.39</b>	<b>-</b>
<b>INFRASTRUCTURE</b>														
8.	BPBCL	1994-95	2009-10	(-1.13)	-	0.01	(-1.14)	0.00 <sup>7</sup>	-	0.10	(-8.22)	(-9).77	(-1).14	-
9.	BRPNL	2001-02	2010-11	(-0.73)	-	0.22	(-0.95)	5.07	**	3.50	(-14.02)	42.03	(-0.95)	-
10.	BHPDCL	-	-	-	-	-	-	-	-	-	-	-	-	-
11.	BSRDCL	-	-	-	-	-	-	-	-	-	-	-	-	-
12.	BUIDCL	-	-	-	-	-	-	-	-	-	-	-	-	-
	<b>Sector wise total</b>			<b>(-1.86)</b>	<b>-</b>	<b>0.23</b>	<b>(-2.09)</b>	<b>5.07</b>	<b>-</b>	<b>3.60</b>	<b>(-22.24)</b>	<b>32.26</b>	<b>(-2).09</b>	<b>-</b>
<b>MANUFACTURING</b>														
13.	BSEDCL	2002-03	2010-11	(-0.27)	0.92	0.04	(-1.23)	1.46	(-0).17	5.67	(-15.90)	2.12	(-0.31)	-
14.	BSMDCL	2000-01	2004-05	9.42	-	0.13	9.29	31.55	-	9.97	7.04	20.68	9.29	44.92
15.	BSBCL	2007-08	2009-10	1.27	-	0.18	1.09	502.84	-	5.00	1.43	5.60	1.09	19.46
16.	BAPL	1992-93	1994-95	0.39	0.23	0.10	0.06	2.21	-	0.80	(-1.03)	1.33	0.29	21.80
	<b>Sector wise total</b>			<b>10.81</b>	<b>1.15</b>	<b>0.45</b>	<b>9.21</b>	<b>538.06</b>	<b>(-0).17</b>	<b>21.44</b>	<b>(-8.46)</b>	<b>29.73</b>	<b>10.36</b>	<b>-</b>
<b>POWER</b>														

4 ₹ (-)0.18 lakh

5 ₹ 0.49 lakh

6 ₹ 0.29 lakh

7 ₹ 0.79 lakh

**Audit Report (Commercial) for the year ended 31 March 2010**

(Figures in column 5 (a) to (6) and (8) to (10) are ₹ in crore)

Sl. No.	Sector & Name of the Company	Period of Accounts	Year in which finalised	Net Profit (+) / Loss (-)			Turn-over	Impact of Accounts Comments #	Paid up Capital	Accumulated Profit (+) / Loss (-)	Capital employed @	Return on capital employed \$	Percentage return on capital employed
				Net Profit/ Interest	Depre- ciation	Net Profit/ Loss							
(1)	(2)	(3)	(4)	5 (a)	5 (b)	5 (c)	5 (d)	(7)	(8)	(9)	(10)	(11)	(12)
17.	BSPICL	1995-96	2004-05	(-11.08)	5.52	0.30	(-6.90)	2.96	89.26	(-5.48)	128.34	(-11.38)	-
	<b>Sector wise total SERVICES</b>			<b>(-11.08)</b>	<b>5.52</b>	<b>0.30</b>	<b>(-6.90)</b>	<b>2.96</b>	<b>89.26</b>	<b>(-5.48)</b>	<b>128.34</b>	<b>(-11.38)</b>	<b>-</b>
18.	BSTDCL	1997-98	2010-11	0.19	-	0.09	0.10	1.97	5.00	2.07	7.63	0.10	1.31
19.	BSFC SCL	1988-89	2007-08	2.53	5.65	0.63	(-3.75)	166.38	4.46	(-29.20)	31.78	1.90	5.98
	<b>Sector wise total MISCELLANEOUS</b>			<b>2.72</b>	<b>5.65</b>	<b>0.72</b>	<b>(-3.65)</b>	<b>168.35</b>	<b>9.46</b>	<b>(-27.13)</b>	<b>39.41</b>	<b>2.00</b>	<b>-</b>
20.	BSFDCL	2000-01	2005-06	0.34	-	0.06	0.28	22.81	2.29	0.32	1.17	0.28	23.93
21.	BSTPCL	1997-98	2009-10	(-4.30)	-	0.06	(-4.36)	7.28	0.48	(-5.97)	(-6.51)	(-4.36)	-
	<b>Total A (All sector wise working Government companies)</b>			<b>8.36</b>	<b>24.86</b>	<b>2.01</b>	<b>(-18.15)</b>	<b>757.80</b>	<b>160.56</b>	<b>(-270.23)</b>	<b>259.56</b>	<b>6.35</b>	<b>-</b>
<b>B. Working Statutory Corporations</b>													
<b>FINANCE</b>													
1.	BSFC	2008-09	2009-10	20.52	19.12	0.04	1.36	15.35	77.84	(-383.93)	444.17	20.48	4.61
	<b>Sector wise total POWER</b>			<b>20.52</b>	<b>19.12</b>	<b>0.04</b>	<b>1.36</b>	<b>15.35</b>	<b>77.84</b>	<b>(-383.93)</b>	<b>444.17</b>	<b>20.48</b>	<b>-</b>
2.	BSEB**	2008-09	2010-11	(-144.09)	902.64	55.55	(-1102.28)	1675.56	-	(-3113.98)	3374.64	(-199.64)	-
	<b>Sector wise total SERVICES</b>			<b>(-144.09)</b>	<b>902.64</b>	<b>55.55</b>	<b>(-1102.28)</b>	<b>1675.56</b>	<b>-</b>	<b>(-3113.98)</b>	<b>3374.64</b>	<b>(-199.64)</b>	<b>-</b>
3.	BSRTC	2002-03	2009-10	(-25.57)	28.77	1.40	(-55.74)	18.19	101.27	(-680.17)	(-428.03)	(-26.97)	-
4.	BSWC	2007-08	2009-10	2.00	0.56	0.86	0.58	41.93	5.31	4.10	20.10	1.14	5.67
	<b>Total B (All sector wise working Statutory corporations)</b>			<b>(-23.57)</b>	<b>29.33</b>	<b>2.26</b>	<b>(-55.16)</b>	<b>60.12</b>	<b>106.58</b>	<b>(-676.07)</b>	<b>(-407.93)</b>	<b>(-25.83)</b>	<b>-</b>
	<b>Grand Total (A + B)</b>			<b>(-138.78)</b>	<b>975.95</b>	<b>59.86</b>	<b>(-1174.59)</b>	<b>2508.83</b>	<b>344.98</b>	<b>(-4444.21)</b>	<b>3670.44</b>	<b>(-198.64)</b>	<b>-</b>
<b>C. Non working Government companies</b>													
<b>AGRICULTURE &amp; ALLIED</b>													
1.	BSWDCL	1978-79	1997-98	3.03	0.25	0.61	2.17	-	5.00	11.20	26.70	2.42	9.06
2.	BSDCL	1994-95	2007-08	(-0.02)	-	-	(-0.02)	-	6.72	(-10.58)	3.68	(-0.02)	-
3.	BHALJCL	1982-83	1993-94	0.18	0.13	0.31	(-0.26)	0.01	5.60	(-0.86)	9.53	(-0.13)	-
4.	BSADCL	1989-90	2009-10	(-5.02)	0.65	0.03	(-5.70)	2.79	7.57	(-28.96)	(-1.41)	(-5.05)	-
5.	BSF&VDCL	1994-95	2010-11	(-0.12)	0.73	0.07	(-0.92)	0.00	2.10	(-7.82)	(-0.07)	(-0.19)	-
6.	BIL	1986-87	1991-92	(-0.52)	0.16	0.35	(-1.03)	-	0.57	(-1.03)	2.35	(-0.87)	-
7.	SABKL	-	-	-	-	-	-	-	-	-	-	-	-
8.	SABLD	-	-	-	-	-	-	-	-	-	-	-	-
9.	SABLA	-	-	-	-	-	-	-	-	-	-	-	-



Sl. No.	Sector & Name of the Company	Period of Accounts	Year in which finalised	Net Profit (+)/ Loss (-)			Turn-over	Impact of Accounts Comments #	Paid up Capital	Accumulated Profit (+)/ Loss (-)	Capital employed <sup>(a)</sup>	Return on capital employed <sup>(b)</sup>	Percentage return on capital employed	
				Net Profit/ Interest	Depre- ciation	Net Profit/ Loss								
(1)	(2)	(3)	(4)	5 (a)	5 (b)	5 (c)	5 (d)	(6)	(7)	(8)	(9)	(10)	(11)	(12)
10.	SABLA	-	-	-	-	-	-	-	-	-	-	-	-	-
11.	SABLEM	-	-	-	-	-	-	-	-	-	-	-	-	-
12.	SAFCK	-	-	-	-	-	-	-	-	-	-	-	-	-
<b>Sector wise total</b>				<b>(-2.47)</b>	<b>1.92</b>	<b>1.37</b>	<b>(-35.76)</b>	<b>2.80</b>	<b>(-0.31)</b>	<b>27.56</b>	<b>(-38.05)</b>	<b>40.78</b>	<b>(-33.84)</b>	
FINANCE														
13.	BPRECL	1984-85	1991-92	0.23	0.24	0.00 <sup>8</sup>	(-0.01)	-	-	1.44	(-0.03)	5.86	0.23	3.92
14.	BSHHCL	1983-84	1996-97	0.02	0.11	0.01	(-0.10)	-	(-0.01)	6.28	(-0.44)	7.08	0.01	0.14
15.	BSSIICL	1990-91	2005-06	(-0.21)	1.15	0.06	(-1.42)	15.22	(-0.53)	7.18	(-16.56)	1.86	(-0.27)	-
16.	BSDICL	1987-88	2009-10	2.22	5.35	0.38	(-3.51)	6.59	(-9.28)	14.04	(-26.42)	29.54	1.84	6.23
<b>Sector wise total</b>				<b>2.26</b>	<b>6.85</b>	<b>0.45</b>	<b>(-35.04)</b>	<b>21.81</b>	<b>(-9.82)</b>	<b>28.94</b>	<b>(-43.45)</b>	<b>44.34</b>	<b>1.81</b>	
INFRASTRUCTURE														
17.	BSCCL	1986-87	2004-05	1.38	0.00 <sup>9</sup>	0.13	1.25	18.70	(-6.65)	7.00	(-2.79)	(-10.27)	1.25	-
<b>Sector wise total</b>				<b>1.38</b>	<b>0.00</b>	<b>0.13</b>	<b>1.25</b>	<b>18.70</b>	<b>(-6.65)</b>	<b>7.00</b>	<b>(-2.79)</b>	<b>(-10.27)</b>	<b>1.25</b>	
MANUFACTURING														
18.	BS&CL	1986-87	1995-96	(-0.05)	0.11	0.16	(-0.32)	-	(-0.24)	0.66	(-0.32)	1.67	(-0.21)	-
19.	MMIL	-	-	-	-	-	-	-	-	-	-	-	-	-
20.	KMC&EL	1994-95	1995-96	(-1.13)	0.38	0.88	(-2.39)	10.89	-	2.17	(-8.16)	0.91	(-2.01)	-
21.	BVSL	1987-88	1998-99	(-0.09)	0.05	0.01	(-0.15)	0.75	-	1.21	(-0.22)	1.02	(-0.10)	-
22.	BMSL	1989-90	2002-03	(-0.07)	-	0.03	(-0.10)	0.41	-	1.26	(-0.49)	0.52	(-0.10)	-
23.	BIL	-	-	-	-	-	-	-	-	-	-	-	-	-
24.	BSSCL	1984-85	1996-97	(-2.84)	6.00	0.36	(-9.20)	-	(-4.67)	9.97	(-72.31)	(-10.24)	(-3.20)	-
25.	BSCCL	-	-	-	-	-	-	-	-	-	-	-	-	-
26.	BSP&DCL	1985-86	1992-93	(-0.16)	0.00 <sup>10</sup>	0.01	(-0.17)	-	-	3.62	(-0.74)	6.87	(-0.17)	-
27.	BMPIL	1983-84	1987-88	(-0.03)	-	0.00 <sup>11</sup>	(-0.03)	-	-	0.67	(-0.06)	0.80	(-0.03)	-
28.	BD&CL	1985-86	1991-92	(-0.03)	-	0.00 <sup>12</sup>	(-0.03)	-	-	0.94	(-0.16)	1.16	(-0.03)	-
29.	BSTCL	1987-88	1995-96	(-0.08)	-	0.01	(-0.09)	-	(-0.02)	4.98	(-0.32)	3.72	(-0.09)	-
<b>Sector wise total</b>				<b>(-14.48)</b>	<b>6.54</b>	<b>1.46</b>	<b>(-12.48)</b>	<b>12.05</b>	<b>(-4.93)</b>	<b>25.48</b>	<b>(-82.78)</b>	<b>6.43</b>	<b>(-5.94)</b>	
SERVICES														
30.	BSECL	1991-92	1999-00	0.11	0.20	0.01	(-0.10)	4.94	(-0.03)	2.00	(-0.01)	3.75	0.10	0.27
<b>Sector wise total</b>				<b>0.11</b>	<b>0.20</b>	<b>0.01</b>	<b>(-0.10)</b>	<b>4.94</b>	<b>(-0.03)</b>	<b>2.00</b>	<b>(-0.01)</b>	<b>3.75</b>	<b>0.10</b>	<b>0.27</b>
MISCELLANEOUS														

8 ₹ 16,235.26

9 ₹ 11,589.31

10 ₹ 1,680.50

11 ₹ 9,052.80

12 ₹ 328.52

**Audit Report (Commercial) for the year ended 31 March 2010**

(Figures in column 5 (a) to (6) and (8) to (10) are ₹ in crore)

Sl. No.	Sector & Name of the Company	Period of Accounts	Year in which finalised	Net Profit (+)/ Loss (-)		Turn-over	Impact of Accounts Comments #	Paid up Capital	Accumulated Profit (+)/ Loss (-)	Capital employed @	Return on capital employed \$	Percentage return on capital employed
				5 (a)	5 (b)							
31.	BPML	1985-86	1997-98	(-0.05)	-	0.01	(-0.06)	1.56	(-0.31)	1.44	(-0.06)	(12)
32.	BSGL&CL	1985-86	1997-98	(-0.06)	0.02	0.00 <sup>14</sup>	(-0.08)	0.16	(-0.51)	3.50	0.06	-
33.	VPIIL	1984-85	1988-89	(-0.01)	-	0.00 <sup>15</sup>	(-0.01)	0.40	(-0.01)	0.69	(-0.01)	-
34.	JPIL	1985-86	1991-92	(-0.01)	0.00 <sup>16</sup>	0.00 <sup>17</sup>	(-0.01)	0.42	(-0.02)	0.59	(-0.01)	-
35.	BSTEL	1988-89	1993-94	(-0.16)	0.16	0.00 <sup>18</sup>	(-0.32)	1.03	(-0.67)	2.49	(-0.16)	-
36.	BSFCL	1983-84	1986-87	(-1.49)	-	-	(-1.49)	1.47	(-2.13)	6.15	(-1.49)	-
37.	SREL	1983-84	1987-88	(-0.02)	0.00 <sup>19</sup>	-	(-0.02)	0.09	(-0.01)	0.17	(-0.02)	-
38.	BACL	1985-86	1989-90	(-0.01)	-	-	(-0.01)	0.02	(-0.01)	0.01	(-0.01)	-
39.	BSLDC	1982-83	2004-05	(-0.25)	0.08	0.04	(-0.37)	5.14	(-2.92)	2.56	(-0.29)	-
40.	BSL	-	-	-	-	-	-	-	-	-	-	-
Sector wise total				(-2.06)	0.26	0.05	(-2.37)	10.29	(-6.59)	17.60	(-2.11)	-
Total C (All sector wise non working Government companies)				(-5.26)	15.77	3.47	(-24.50)	101.27	(-173.67)	102.63	(-8.73)	-
Grand Total (A + B + C)				(-1144.04)	991.72	63.33	(-1199.09)	446.25	(-14617.88)	3773.07	(-207.37)	-

Above includes Section 619-B companies at Sr. No. 3 & 16 of working companies and Sr. No. 7 to 12 of non-working companies.

# Impact of accounts comments include the net impact of comments of Statutory Auditors and CAG and is denoted by (+) increase in profit/ decrease in losses (-) decrease in profit/ increase in losses.

@ Capital employed represents net fixed assets (including capital works-in-progress) plus working capital except in case of finance companies/ corporations where the capital employed is worked out as a mean of aggregate of the opening and closing balances of paid up capital, free reserves, bonds, deposits and borrowings (including refinance).

\$ Return on capital employed has been worked out by adding profit and interest charged to profit and loss account.

\*\* Audit of Accounts by CAG who is the sole auditor for these corporations is in progress as of 30 September 2010.

<sup>13</sup> ₹ 36,000

<sup>14</sup> ₹ 47,550.94

<sup>15</sup> ₹ 7,623.00

<sup>16</sup> ₹ 2,533.30

<sup>17</sup> ₹ 421.36

<sup>18</sup> ₹ 22,074.77

<sup>19</sup> ₹ 5,814.45

**Annexure – 3**  
**(Referred to in paragraph 1.10)**  
**Statement showing equity/ loans received out of budget, grants and subsidy received/receivable, guarantees received, waiver of dues, loans written off and loans converted into equity during the year and guarantee commitment at the end of March 2010**  
**(Figures in column 3 (a) to 6 (d) are ₹ in crore)**

Sl. No.	Sector & Name of the Company	Equity/ loans received out of budget during the year		Grants and subsidy received during the year			Guarantees received during the year and commitment at the end of the year <sup>(a)</sup>		Waiver of dues during the year				
		Equity	Loans	Central Government	State Government	Others	Total	Received	Commitment	Loans repayment written off	Loans converted into equity	Interest/ penal interest waived	Total
(1)	(2)	3 (a)	3 (b)	4 (a)	4 (b)	4 (c)	4 (d)	5 (a)	5 (b)	6 (a)	6 (b)	6 (c)	6 (d)
<b>A. Working Government Companies</b>													
<b>AGRICULTURE &amp; ALLIED</b>													
1.	Bihar Rajya Beej Nigam Ltd.	-	-	-	15.46	-	15.46	-	-	-	-	-	-
2.	Bihar Rajya Matsya Vikas Nigam Ltd.	-	-	-	-	-	-	4.40 <sup>(a)</sup>	-	-	-	-	-
<b>Sector wise total</b>		-	-	-	<b>15.46</b>	-	<b>15.46</b>	-	-	-	-	-	-
<b>FINANCE</b>													
3.	Bihar State Backward Classes Finance & Development Corporation Ltd.	1.00	-	-	-	-	-	-	25.00 <sup>(a)</sup>	-	-	-	-
4.	Bihar State Minorities Finance Corporation Ltd.	-	-	-	-	-	-	-	30.00 <sup>(a)</sup>	-	-	-	-
<b>Sector wise total</b>		<b>1.00</b>	-	-	-	-	-	-	<b>59.40<sup>(a)</sup></b>	-	-	-	-
<b>INFRASTRUCTURE</b>													
5.	Bihar State Road Development Corporation Limited	20.00	-	-	-	-	-	-	-	-	-	-	-
6.	Bihar Urban Infrastructure Development Corporation Limited	5.00	-	-	-	-	-	-	-	-	-	-	-
<b>Sector wise total</b>		<b>25.00</b>	-	-	-	-	-	-	-	-	-	-	-
<b>POWER</b>													
7.	Bihar State Hydro electro Power Corporation Ltd.	-	17.88	-	-	-	-	-	-	-	-	-	-
<b>Sector wise total</b>		-	<b>17.88</b>	-	-	-	-	-	-	-	-	-	-

**Audit Report (Commercial) for the year ended 31 March 2010**

Sl. No.	Sector & Name of the Company	Equity/ loans received out of budget during the year		Grants and subsidy received during the year			Guarantees received during the year and commitment at the end of the year <sup>(a)</sup>		Waiver of dues during the year				
		Equity	Loans	Central Government	State Government	Others	Total	Received	Commitment	Loans repayment written off	Loans converted into equity	Interest/penal interest waived	Total
(1)	(2)	3 (a)	3 (b)	4 (a)	4 (b)	4 (c)	4 (d)	5 (a)	5 (b)	6 (a)	6 (b)	6 (c)	6 (d)
	<b>Total A (All sector wise Working Government Companies)</b>	26.00	17.88	-	15.46	-	15.46	-	59.40 <sup>(a)</sup>	-	-	-	-
	<b>B. Working Statutory corporations</b>												
	<b>FINANCE</b>												
	1. Bihar State Financial Corporation Ltd.	-	-	-	-	-	-	-	44.15	-	-	0.12	-
	<b>Sector wise total</b>	-	-	-	-	-	-	-	44.15	-	-	0.12	-
	<b>POWER</b>												
	2. Bihar State Electricity Board	-	546.39	-	840.00	-	840.00	-	61.49 <sup>(a)</sup>	-	-	-	-
	<b>Sector wise total</b>	-	546.39	-	840.00	-	840.00	-	61.49 <sup>(a)</sup>	-	-	-	-
	<b>SERVICES</b>												
	3. Bihar State Road Transport Corporation	-	206.09	-	-	-	-	-	-	-	-	-	-
	<b>Sector wise total</b>	-	206.09	-	-	-	-	-	-	-	-	-	-
	<b>Total B (All sector wise working Statutory corporations)</b>	-	752.48	-	840.00	-	840.00	-	44.15	-	-	0.12	-
	<b>Grand Total (A + B)</b>	26.00	770.36	-	855.46	-	855.46	-	44.15	-	-	0.12	-
	<b>C. Non working Government companies</b>												
	<b>AGRICULTURE &amp; ALLIED</b>												
	1. Bihar Fruit & Vegetable Development Corporation Ltd.	-	-	-	18.33	-	18.33	-	-	-	-	-	-
	<b>Sector wise total</b>	-	-	-	18.33	-	18.33	-	-	-	-	-	-
	<b>Total C (All sector wise non working Government companies)</b>	-	-	-	18.33	-	18.33	-	-	-	-	-	-
	<b>Grand Total (A + B + C)</b>	26.00	770.36	-	873.79	-	873.79	-	44.15	-	-	0.12	-

<sup>(a)</sup> Figures indicate total guarantees outstanding at the end of the year.

**Annexure – 4**  
(Referred to in paragraph 1.24)

**Statement showing investments made by the State Government in PSUs whose accounts are in arrears**

(Amount: ₹ in crore)

Name of PSU	Year up to which Accounts finalised	Paid up capital as per latest finalised accounts	Investment made by the State Government during the years for which accounts are in arrears			
			Equity	Loans	Grants	Others to be specified (Subsidy)
<b>A. Working Companies</b>						
Bihar Rajya Beej Nigam Limited	1998-99	3.71	-	2.28	41.22	-
Bihar State Text Book Publishing Corporation Limited	1997-98	0.48	-	-	-	205.00
Bihar State Backward Classes Finance & Development Corporation	1997-98	3.62	12.74	7.49	-	-
Bihar State Tourism Development Corporation Limited.	1997-98	5.00	-	-	-	-
Bihar State Food & Civil Supplies Corporation Limited	1988-89	4.46	0.81	202.25	-	-
Bihar Rajya Pul Nirman Nigam Limited	2001-02	3.50	-	-	-	-
Bihar Police Building Construction Corporation Limited	1994-95	0.10	-	-	-	-
Bihar State Hydro Electric Power Corporation Limited	1995-96	89.26	9.78	165.65	-	-
Bihar Rajya Matasya Vikas Nigam Limited	1992-93	1.75	1.25	5.63	-	-
Bihar State Forest Development Corporation Limited	2000-01	2.29	-	-	-	-
Bihar State Credit & Investment Corporation Limited	2002-03	15.12	-	57.49	-	-
Bihar State Film Development & Finance Corporation Limited	1991-92	0.95	1.05	0.01	-	-
Bihar State Electronic Development Corporation Limited	2001-02	5.67	-	-	-	-
Bihar State Mineral Development Corporation Limited	2000-01	9.97	-	-	11.00	-
Bihar State Minorities Finance Corporation Limited	2006-07	8.95	2.55	-	-	-
Bihar State Beverages Corporation Limited	2007-08	5.00	-	-	-	-
Bihar Health Project Development Corporation	No Accounts finalised since inception	0.06*	0.06	-	-	-

Name of PSU	Year up to which Accounts finalised	Paid up capital as per latest finalised accounts	Investment made by the State Government during the years for which accounts are in arrears			
			Equity	Loans	Grants	Others to be specified (Subsidy)
Bihar State Road Development Corporation Limited	No Accounts finalised since inception	20.00*	20.00	-	-	-
Bihar Urban Infrastructure Development Corporation Limited	No Accounts finalised since inception	5.00*	5.00	-	-	-
<b>Total (A)</b>			<b>53.24</b>	<b>440.80</b>	<b>52.22</b>	<b>205.00</b>
<b>B. Working Statutory Corporations</b>						
Bihar State Electricity Board	2008-09	-	-	546.39	840.00	-
Bihar State Road Transport Corporation	2002-03	101.27	-	297.11	-	-
Bihar State Financial Corporation	2008-09	77.84	-	-	-	-
Bihar State Warehousing Corporation	2007-08	5.31	-	-	-	-
<b>Total (B)</b>			-	<b>843.50</b>	<b>840.00</b>	-
<b>Total (A+B)</b>			<b>53.24</b>	<b>1284.30</b>	<b>892.22</b>	<b>205.00</b>
<b>Non-working Companies</b>						
Bihar State Small Industries Corporation Limited	1990-91	7.18	-	1.66	-	2.46
Bihar State Pharmaceuticals & Chemical Development Corporation Limited	1985-86	3.62	12.92	6.30	-	-
Bihar State Industrial Development Corporation Limited	1987-88	14.04	-	38.47	-	-
Bihar State Leather Industries Development Corporation Limited	1982-83	5.14	12.26	43.18	-	-
Bihar State Textile Corporation Limited	1987-88	4.98	5.80	2.74	-	-
Bihar State Dairy Corporation Limited	1994-95	6.72	-	-	-	-
Bihar State Construction Corporation Limited	1986-87	7.00	4.00	1.05	-	-
Bihar Hill Area Lift Irrigation Corporation Limited	1982-83	5.60	5.22	18.78	-	55.41
Bihar State Sugar Corporation Limited	1984-85	9.97	10.03	365.32	-	-
Bihar Panchayati Raj Finance Corporation Limited	1984-85	1.44	-	-	-	-
Bihar State Water Development Corporation Limited	1978-79	5.00	5.00	154.33	-	-
Bihar State Agro Industries Development Corporation Limited	1989-90	7.57	0.07	24.66	-	-
Bihar Fruits & Vegetables Development Corporation Limited	1994-95	2.10	-	4.65	21.07	-

Name of PSU	Year up to which Accounts finalised	Paid up capital as per latest finalised accounts	Investment made by the State Government during the years for which accounts are in arrears			
			Equity	Loans	Grants	Others to be specified (Subsidy)
Bihar State Export Corporation Limited	1991-92	2.00	-	2.21	-	0.07
Bihar State Handloom & Handicrafts Corporation Limited	1983-84	6.28	3.72	0.25	-	0.48
Bihar Solvent & Chemicals Limited	1986-87	0.66	-	-	-	-
Bihar State Cement Corporation Limited	A/c has not been finalised since inception	-	-	-	-	-
Bihar Drugs and Chemicals Limited	1985-86	0.94	NA	NA	NA	NA
Bihar State Tannin Extract Limited	1988-89	1.03	NA	NA	NA	NA
<b>Total</b>			<b>59.02</b>	<b>663.60</b>	<b>21.07</b>	<b>58.42</b>
<b>Grand Total</b>			<b>112.26</b>	<b>1947.90</b>	<b>913.29</b>	<b>263.42</b>

\*Figures are based on the information furnished by the Companies.

NA indicates that the information has not been provided by the respective Company.

**Annexure - 5**  
**(Referred to in paragraph 1.14)**  
**Statement of financial position of Statutory corporations**

(Amount: ₹ in crore)

<b>1. Bihar State Electricity Board</b>			
Particulars	2006-07	2007-08	2008-09
<b>A Liabilities</b>			
Equity Capital	---	---	---
Loans from Government	5,577.62	5,764.95	6151.01
Reserves and Surplus(excluding depreciation reserve)	---	---	---
Current Liabilities and provisions	2,812.26	3,049.34	3302.59
Capital liabilities	3,829.17	4,423.27	5616.64
<b>Total – A</b>	<b>12,219.05</b>	<b>13,237.56</b>	<b>15070.24</b>
<b>B Assets</b>			
Gross fixed assets	2,242.43	2418.34	2556.51
Less depreciation	1,630.81	1684.44	1740.85
Net fixed assets	611.62	733.89	815.66
Capital work-in- progress	833.97	808.74	934.10
Current assets	4,454.49	4,702.33	4927.47
Investments	415.01	503.94	899.78
Subsidy receivable from Government	4,315.65	4,315.65	4,315.65
Assets not in use	3.61	3.61	3.61
Regulatory assets	60.00	60.00	60.00
Miscellaneous expenditure	---	---	---
Deficits	1524.70	2109.41	3113.98
<b>Total – B</b>	<b>12,219.05</b>	<b>13,237.56</b>	<b>15070.24</b>
<b>C Capital employed*</b>	3,087.81	3195.62	3374.64
<b>2. Bihar State Road Transport Corporation<sup>^</sup></b>			
Particulars	2007-08	2008-09 (provisional)	2009-10 (provisional)
<b>A Liabilities</b>			
Capital (including capital loan & equity capital)	182.29	200.91	404.01
Borrowings (Government)	--	--	--
(Others)	--	--	--
Funds**	0.30	0.30	0.30
Trade dues and other current liabilities (including provisions)	1,109.90	1173.69	1215.52
<b>Total – A</b>	<b>1,292.49</b>	<b>1374.90</b>	<b>1619.53</b>
<b>B Assets</b>			
Gross Block			
Less depreciation			
Net fixed assets	47.00	41.60	37.00
Capital works in progress (including cost of chassis)	-	-	-

\* Capital employed represents net fixed assets (including Capital Work-in-Progress) plus working capital. While working out working Capital the element of deferred cost and investments are excluded from the current assets.

<sup>^</sup> Figures are as per information provided by the Corporation.

\*\* Excluding depreciation funds.



Investments	-	-	-
Current Assets, loans and advances	298.92	310.16	495.90
Accumulated Losses	946.57	1023.14	1086.63
<b>Total – B</b>	<b>1,292.49</b>	<b>1374.90</b>	<b>1619.53</b>
<b>C. Capital employed *</b>	<b>(-)763.98</b>	<b>(-)821.93</b>	
<b>3. Bihar State Financial Corporation</b>			
<b>Particulars</b>	<b>2007-08</b>	<b>2008-09</b> (provisional)	<b>2009-10</b> (provisional)
<b>A Liabilities</b>			
Paid-up capital*	77.84	77.84	77.84
Reserve fund, other reserves	10.05	10.05	10.05
Borrowings	260.81	-	-
Bonds and Debentures	87.52	79.47	35.32
Others paid by State Govt.	--	232.02	228.47
Current liabilities and provisions	241.19	290.94	293.27
<b>Total – A</b>	<b>677.41</b>	<b>690.32</b>	<b>644.94</b>
<b>B Assets</b>			
Cash and Bank balance	76.35	91.82	48.76
Investments	0.04	0.04	0.04
Loans and advances	202.22	204.82	204.86
Net fixed assets	0.67	0.64	0.68
Current assets	11.83	9.07	7.56
Dividend deficit account	1.01	-	-
Deficit	385.29	383.93	383.04
<b>Total – B</b>	<b>677.41</b>	<b>690.32</b>	<b>644.94</b>
<b>C. Capital employed**</b>	<b>439.28</b>	<b>390.81</b>	<b>375.53</b>
<b>4. Bihar State Warehousing Corporation*</b>			
<b>Particulars</b>	<b>2007-08</b>	<b>2008-09</b> (provisional)	<b>2009-10</b> (provisional)
<b>A. Liabilities</b>			
Paid-up capital	5.31	5.31	6.42
Reserves and surplus	16.23	15.56	23.01
Trade dues and other liabilities (including provisions)	17.89	39.76	28.09
<b>Total -A</b>	<b>39.43</b>	<b>60.63</b>	<b>57.52</b>
<b>B Assets</b>			
Gross block	17.28	17.28	17.28
Less depreciation	0.86	1.69	2.52
Net fixed assets	16.42	15.59	14.76
Capital work-in-progress	--	--	--
Current assets, loans and advances	23.01	45.04	42.76
Profit and loss Account	--	--	--
<b>Total – B</b>	<b>39.43</b>	<b>60.63</b>	<b>57.52</b>
<b>C. Capital employed<sup>#</sup></b>	<b>26.22</b>	<b>24.94</b>	<b>31.82</b>

\*Capital employed represents net fixed assets (including capital work-in-progress) plus working capital.

\*Paid-up capital includes share application money.

\*\*Capital employed represents the mean of the aggregate of opening and closing balances of paid-up capital, reserves (Other than those which have been funded specifically and backed by investment outside) bond, deposits and borrowings (including refinance).

#Figures are as per information provided by the Corporation.

**Annexure - 6**  
**(Referred to in paragraph 1.14)**

**Statement of working results of Statutory corporations**

(Amount: ₹ in crore)

<b>1. Bihar State Electricity Board</b>				
<b>Sl. No.</b>	<b>Particulars</b>	<b>2006-07</b>	<b>2007-08</b>	<b>2008-09</b>
1	(a) Revenue Receipts	1,392.26	1588.26	1765.30
	(b) Subsidy from the Government	720.00	720.00	720.00
	<b>Total</b>	<b>2,112.26</b>	<b>2,308.26</b>	<b>2485.30</b>
2	Revenue Expenditure (net of expenses capitalised) including write off of intangible assets but excluding depreciation and Interest)	2,041.09	2277.08	2643.65
3	Gross Surplus (+)/deficit (-) for the year (1-2)	71.17	31.18	(-) 158.35
4	Adjustment relating to previous years	(-)58.25	266.24	97.71
5	Final Gross Surplus (+)/deficit (-) for the year (3+4)	12.92	297.42	(-) 60.64
6	<b>Appropriation</b>			
(a)	Depreciation (less capitalised)	58.22	53.62	55.55
(b)	Interest on capital loans	482.73	570.03	611.23
(c)	Interest on other loans, bonds, advances etc.	339.58	278.68	291.40
(d)	Total Interest on loans and finance charges (b+c)	822.31	848.71	902.63
(e)	Less : Interest capitalised	13.00	20.20	14.26
(f)	Net Interest Charged to revenue (d-e)	809.31	828.51	888.37
(g)	Total appropriation (a+f)	867.53	882.13	943.92
7	Surplus (+) /deficit (-) before account of subsidy from State Government (5-6(g) -1(b))	(-)1574.61	(-)1304.71	(-) 1709.96
8	Net surplus (+)/deficit (-) 5-6(g)	(-)854.62	(-) 584.71	(-) 1004.56
9	Total return on Capital employed*	(-)45.31	243.80	(-) 116.19
10	Percentage of return on Capital employed	--	7.63	--
<b>2. Bihar Road Transport Corporation<sup>?</sup></b>				
	<b>Particulars</b>	<b>2007-08</b>	<b>2008-09</b> (provisional)	<b>2009-10</b> (provisional)
	<b>Operating</b>			
(a)	Revenue	51.84	39.85	19.50
(b)	Expenditure	71.56	78.77	49.54
(c)	Surplus (+)/Deficit (-)	(-)19.72	(-) 38.92	(-) 30.04
	<b>Non-operating</b>			
(a)	Revenue	3.63	2.90	2.73
(b)	Expenditure	35.87	37.70	36.18
(c)	Surplus (+)/Deficit (-)	(-)32.24	(-)34.80	(-) 33.45
	Revenue	55.47	42.75	22.23
	Expenditure	107.43	116.47	85.72
	Net Profit (+)/ Loss (-)	(-)51.96	(-) 73.72	(-) 63.42
	Interest on capital and loans	18.53	18.80	18.53
	Total return on Capital employed	(-)33.43	(-)54.92	

\*Total return on capital employed represents Net surplus/deficit plus total interest charged to profit and loss account (less interest capitalised).

? Figures are provided by the Corporation.

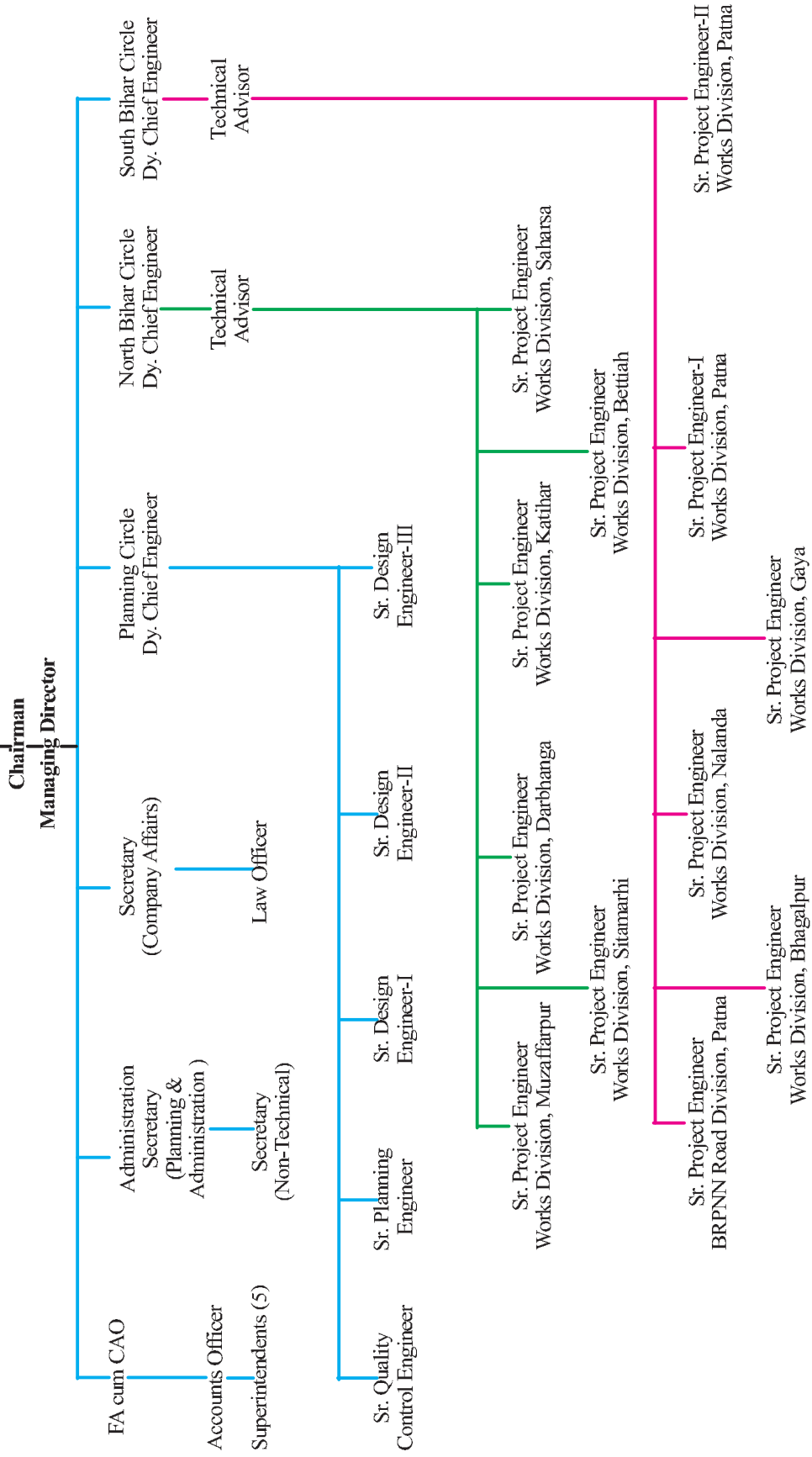
<b>3. Bihar State Financial Corporation<sup>-</sup></b>				
	<b>Particulars</b>	<b>2007-08</b>	<b>2008-09</b> (provisional)	<b>2009-10</b> (provisional)
<b>1</b>	<b>Income</b>			
i)	Interest on loans	9.29	8.85	13.33
ii)	Other income	47.97	23.44	6.78
	<b>Total - 1</b>	<b>57.26</b>	<b>32.29</b>	<b>20.11</b>
<b>2.</b>	<b>Expenses<sup>*</sup></b>			
i)	(a) Interest on long term loans and short term loans	20.45	19.12	5.96
	(b) Provision for non-performing assets	--	--	1.72
	(c) Other Expenses	8.51	11.78	11.54
	<b>Total - 2</b>	<b>28.96</b>	<b>30.90</b>	<b>19.22</b>
3.	Profit (+)/Loss (-) before tax (1-2)	28.30	1.39	0.89
4.	Provision for tax	0.02	0.02	--
5.	Other appropriations	--	--	--
6.	Amount available for dividend <sup>#</sup>	--	--	--
7.	Dividend	--	--	--
8.	Total return on capital employed	48.75	20.51	6.85
9.	Percentage of return on capital employed	11.10	5.25	1.82
<b>4. Bihar State Warehousing Corporation<sup>-</sup></b>				
	<b>Particulars</b>	<b>2007-08</b>	<b>2008-09</b> (provisional)	<b>2009-10</b> (provisional)
<b>1.</b>	<b>Income</b>			
(a)	Ware housing charges	7.85	8.69	10.00
(b)	Other income	34.53	47.29	55.10
	<b>Total - 1</b>	<b>42.38</b>	<b>55.98</b>	<b>65.10</b>
<b>2.</b>	<b>Expenses</b>			
(a)	Establishment Charges	4.90	4.93	5.06
(b)	Other Expenses	36.34	45.68	53.53
	<b>Total - 2</b>	<b>41.24</b>	<b>50.61</b>	<b>58.59</b>
3	Profit (+)/Loss (-) before tax	1.14	5.37	6.51
4.	Prior period adjustment	--	--	--
5.	Other appropriation	--	2.03	--
6.	Amount available for dividend	1.14	3.34	6.51
7.	Dividend for the year	0.19	0.60	0.60
8.	Total return on Capital employed	1.14	3.34	6.51
9.	Percentage of return on Capital employed	4.35	13.39	20.46

<sup>-</sup> Figures are provided by the Corporation.

<sup>\*</sup> Provision for Non-Performing Assets for the year may be distinctly shown under the head Expenses.

<sup>#</sup> Represents profit of current year available for dividend after considering the specific reserve.

**Annexure 7**  
**(Referred to in paragraph 2.1)**  
**Organisation chart of Bihar Rajya Pul Nirman Nigam Ltd.**  
**Board of Directors**



**Annexure -8**  
**(Referred to in paragraph 2.9.2)**  
**Statement of non utilisation of bridges**

Sl. No.	Name of Bridges	Date of completion of bridge	Date of completion of approach road	Cost of Bridge (₹ in crore)	Delay in months
1.	RCC bridge on Belha river near Simanagardi in Banka District	30-04-2008	24-11-2008	0.68	07
2.	RCC bridge on Bilasi river in Banka Distt.	31-03-2009	June 2009	1.19	03
3.	SP bridge in Sanhaua Baisa road in Baisa viilage in Bhagalpur Distt.	30-04-2008	24-11-2008	1.21	07
4.	RCC bridge in Sonuchak Puraini in Bhagalpur Distt.	30-04-2008	24-11-2008	0.85	07
5.	RCC bridge on Lohari river in Mamlakha Lailakh in Bhagalpur District	31.03.2009	In progress	7.65	13
6.	RCC bridge in NH 80 Shivpur to Mangarh Sindhiya road in Munger Distt.	30-06-2008	24-11-2008	0.56	05
7.	RCC Bridge in Henjapur to Maharana Road 2nd KM in Munger Distt.	30-06-2008	24-11-2008	0.54	05
8.	RCC Bridge in Henjapur to Maharana Road 3rd KM in Munger Distt	30-06-2008	January 2009	0.55	07
9.	RCC Bridge in Henjapur to Maharana Road 4th KM in Munger Distt	30-06-2008	January 2009	0.56	07
10.	RCC bridge on Bilasi river near Gorgama Kenduar in Banka Distt.	31-07-2009	24-11-2009	1.81	04
11.	RCC Bridge in Kataria river near Brindavan Bhawan korma in Banka Distt.	29-07-2009	24-11-2009	1.96	04
12.	RCC Bridge in Lohagarh river between Shakti Ghat Khesar in Banka Distt	31-05-2009	December 2009	2.39	07
13.	RCC Bridge on Dakai river Dudhari Gogiadih in Banka Distt.	31-07-2009	November 2009	1.36	04

Sl. No.	Name of Bridges	Date of completion of bridge	Date of completion of approach road	Cost of Bridge (₹ in crore)	Delay in months
14.	RCC Bridge in Nonia Basar Between Mangara to Balianahar in Banka Distt	30-06-2009	24-11-2009	0.76	05
15.	RCC Bridge over river Pirpanti Dargah Ghat in Bhagalpur Distt	31-03-2009	15-03-2010	1.87	12
16.	RCC foot Bridge at Sultanganj from Sidhighat to Ajgaibinath in Bhagalpur Distt.	30-06-2009	24-11-2009	5.59	05
17.	RCC Bridge at Kathara river on Dhamana Kitta Khaira Baijal road in Jammui Distt.	30-06-2009	April 2010	1.26	10
18.	RCC Bridge on Bahuar river near Lahila Akauni road Jamui Distt	31-05-2009	April 2010	1.68	11
19.	RCC Bridge on Bahuar river at Khutkhat Nawabganj road in Jamui Distt	31-12-2009	April 2010	1.57	04
20.	RCC Bridge on Bahuar river near Sikandra Durgasthan in Jamui Distt	30-06-2009	October 2009	1.61	04
21.	RCC Bridge on Bahuar river near Gaditelwa Ghasi tari in Jamui Distt	30-06-2009	16-04-2010	2.81	10
22.	RCC Bridge on river Morhar in Narhat village	06-02-2007	30-05-2007	1.16	3.5
23.	Bridge on Mundershah in Ashiyana Digha road in Patna	28-02-2008	September 2010	0.28	27
24.	Bridge on SPM Daulatpur Alwalpur road	30-06-2008	31-03-2009	2.08	09
25.	Bridge on 8 <sup>th</sup> Km on Lai road of Baghakol Laghar Shivpur Chauraha	30-06-2008	31-03-2009	2.68	09
26.	Bridge on Sabnima to Ramnagar in the branch of river Ganga	30-06-2008	30-06-2009	4.35	12
27.	Bridge over river Punpun near Fatehpur village	30-06-2008	31-07-2009	7.91	13
28.	Bridge in Manas main road in Manas Panchyat bridge No. 2	31-05-2009	31-03-2010	2.13	10

Sl. No.	Name of Bridges	Date of completion of bridge	Date of completion of approach road	Cost of Bridge (₹ in crore)	Delay in months
29.	Bridge in Manas main road in Manas Panchyat bridge No. 3	31-05-2009	31-03-2010	2.12	10
30.	Bridge over river Kohira in Manar road from Biur to Devargi	30-06-2009	31-08-2009	1.08	02
31.	Bride on Rehua Morbia across Harohar river in Lakhisarai	November 2009	March 2010	8.70	04
32.	Bridge on Falgu river Ghosi – Sukhiyanwan-Hulasganj road	June 2006	8-02-2007	6.478	07
33.	Bridge on Falgu river Ghosi – Islampur road near Ratanbigha	September 2006	8-02-2007	4.894	04
34.	Bridge on Keshhar river on Madanpur Dev path	September 2009	24-1-2009	3.609	02
35.	Bridge on Ramrekha river on Ekwania bigha	December 2009	22-01-2010	1.329	01
36.	Bridge on Adri river on Obra Surkhi road	December 2009	22-01-2010	0.845	01
37.	Bridge on Budh river on Sadipur Dihuri Nawadih road	February 2010	September 2010	1.333	04
38.	Bridge on Jamune river Akaunadhina Bigha	April 2009	11-06-2009	1.603	1.5
39.	Bridge on Muthai river on Bajitpur road	April 2009	11-06-2009	2.631	1.5
40.	Bridge on Morhar river near Kamarpur Dawa	April 2009	11-06-2009	0.793	1.5
41.	Bridge on Falgu river Charoi Okri path	January 2010	In progress	4.367	5
42.	Bridge on Dardha river Irki Thithai Bigha road	January 2010	31-03-2010	4.593	02
43.	Bridge on Jamune river on Kurmawa- Gaya-Dhobhi road	September 2009	24-11-2009	1.183	1.5
44.	Bridge on Sone Canal near bus stand arwal	September 2009	24-11-2009	1.203	1.5
45.	Bridge on Nala near Bajalpur – Goh Uphara road	September 2009	September 2010	0.904	06
	<b>Total</b>			<b>106.715</b>	

**Annexure-9**  
(Referred to in paragraph 2.9.3)

**Statement of Cost Overrun in case of bridges constructed under Plan/Non-Plan Head during 2005-06 to 2009-10**

(Amount: ₹ in lakh)

Sl. No.	Name of Bridge	Head	Year of allotment	Amount of AA	Expenditure incurred including Centage Charges (as on Sep. 2010)	Excess expenditure
1	Bridge on 11 <sup>th</sup> KM of Mohania-Bhabhua road in Kaimur Distt	Plan	2005-06	89.45	101.06	11.61
2	Bridge on Thora river on 2 <sup>nd</sup> KM of Buxar-Chausa road in Buxar Distt	Plan	2005-06	325.00	598.33	273.33
3	Bridge on 16 <sup>th</sup> KM of Makhdumpur Sonwa Bauri Hulasganj road in Jehanabad Distt	Plan	2005-06	900.00	1623.35	723.35
4	Bridge on Basahi river in 9 <sup>th</sup> KM of Kudra Parsathua road in Kaimur Distt	Plan	2005-06	300.00	467.26	167.26
5	Bridge on Harohar river in 13 <sup>th</sup> KM of Puraina Barahia road in Shekhpura Distt	Plan	2005-06	326.53	657.18	330.65
6	Bridge on Dhaus river on 17 <sup>th</sup> KM of Ara Salempur road in Bhojpur Distt	Plan	2005-06	232.16	412.96	180.80
7	Construction of Hume pipe, culver and road raging in 3 <sup>rd</sup> KM of Ghoshi Islampur road on Falgu River in Jehanabad Distt	Plan	2006-07	43.94	47.30	3.36
8	Bridge on Sursar River near Korla Patti on Triveniganj Jadia Balua Road in Supaul Distt	Plan	2006-07	298.17	488.82	190.65
9	Bailey Bridge from Garden Rich Ship Builders and Engineers Ltd.	Plan	2006-07	530.00	557.22	27.22



10	Bridge on 13.8 <sup>th</sup> KM near Bhaya Ghat Kusumba on Shekhpura Barahia Road in Shekhpura Distt	Plan	2006-07	137.30	164.90	27.60
11	Bridge on 14.4 <sup>th</sup> KM near Bhaya Ghat Kusumba on Shekhpura Barahia Road in Shekhpura Distt	Plan	2006-07	137.30	145.90	8.60
12	Bridge on 13.8 <sup>th</sup> KM near Bhaya Ghat Kusumba on Shekhpura Barahia Road in Shekhpura Distt	Plan	2006-07	228.50	229.35	0.85
13	Bridge on 22 <sup>nd</sup> KM of Barh urban Sarmera Road in Patna Distt	Plan	2006-07	184.64	194.84	10.20
14	Bridge on 26 <sup>th</sup> KM of Barh urban Sarmera Road in Patna Distt	Plan	2006-07	275.84	279.31	3.47
15	Bridge on Sakri River near Dariyapur on Warsliganj Kharat road in Nawada Distt	Plan	2006-07	1340.00	1346.76	6.76
16	Bridge on 2 <sup>nd</sup> KM in Purnea-Kadwa-Sonauli-Azamgarh Abadpur road on Kachaura (Mahant Sthan) in Katihar Distt	Plan	2006-07	545.47	612.67	67.20
17	Bridge on 2 <sup>nd</sup> KM in Gerua-Dalmalpur-Jokihat road near Doriya in Katihar Distt	Plan	2006-07	545.84	668.50	122.66
18	Bridge on 2 <sup>nd</sup> KM in Purnea-Kadwa-Sonauli-Azamgarh Abadpur road on Marangikund (East of Sausachak) in Katihar Distt	Plan	2006-07	303.04	396.45	93.41

19	Bridge on 1 <sup>st</sup> KM in Purnea-Kadwa-Sonauli-Azamgarh Abadpur road on Chaparghat in Katihar Distt	Plan	2006-07	303.17	352.28	49.11
20	Bridge on 1 <sup>st</sup> KM in Purnea-Kadwa-Sonauli-Azamgarh Abadpur road on Simalkund in Katihar Distt	Plan	2006-07	228.77	285.73	56.96
21	Bridge on 3 <sup>rd</sup> KM in Purnea-Kadwa-Sonauli-Azamgarh Abadpur road on Uttamkund in Katihar Distt	Plan	2006-07	545.47	588.51	43.04
22	Bridge on 2 <sup>nd</sup> Km in Nariyawan Ghat on Khira-Sonipath in Jamui District.	Plan	2006-07	1131.19	1350.45	219.26
23	Bridge on 1 <sup>st</sup> Km of Ara Salempur road in Bhojpur Distt	Plan	2007-08	63.17	69.18	6.01
24	Bridge on Ganga river near Azgaibinath Mandir in Sultanganj in Bhagalpur District	Plan	2007-08	558.66	594.63	35.97
25	Bridge on 10 <sup>th</sup> Km of Shiohar-Minapur-Jhapaha road on Bagmati River in Shiohar Distt	Plan	2007-08	194.31	442.23	247.92
26	Bridge on 15 <sup>th</sup> Km of Shiohar-Minapur-Jhapaha road on Bagmati River in Shiohar Distt	Plan	2007-08	181.00	195.03	14.03
27	Bridge on 1 <sup>st</sup> Km of Shiohar-Minapur-Jhapaha road on Bagmati River in Shiohar Distt	Plan	2007-08	177.63	245.29	67.66
28	Bridge on Kamla River on Ghanshyampur-Rasiyari Road in Darbhanga Distt	Plan	2007-08	1900.07	1974.32	74.25

29	Protection work of Baisaghat Bridge on 9 <sup>th</sup> Mile of Amout-Bahadurganj Road in Purnea Distt	Plan	2008-09	124.24	127.30	3.06
30	Remodeling of Training hall and attached rooms of Vishwesariya Council under RCD	Plan	2009-10	22.55	73.02	50.47
31	Bridge on 11 <sup>th</sup> Km of Pehlagarh-Belhari road in Mogiadhar in Katihar Distt	Central Road Fund	2007-08	107.57	139.18	31.61
32	Bridge near Palsaghat on Palsa-Macharhatta in Parmanedhar in Purnea Distt	Central Road Fund	2008-09	1038.60	1118.99	80.39
33	Bridge on 7 <sup>th</sup> Km of Maheshkhunt-Maulichak Road on NH-107	Road Sector	2007-08	238.04	376.61	138.57
34	Bridge on 8 <sup>th</sup> Km of Maheshkhunt-Maulichak Road on NH-107	Road Sector	2007-08	355.56	583.17	227.61
35	Bridge on 21 <sup>st</sup> Km of Maheshkhunt-Maulichak Road near Pansalwa on NH-107	Road Sector	2007-08	309.54	589.07	279.53
36	Flyover on Kankarbagh T Junction in Patna Distt	Road Sector	2007-08	3034.12	3836.73	802.61
37	Construction of Nala and Channel cover with Footpath in Kankarbagh Main road (Old Bypass) in New Capital Road Division in Patna Distt	Road Sector	2007-08	418.06	1099.79	681.73
<b>Total</b>				<b>17674.90</b>	<b>23033.67</b>	<b>5358.77</b>

**Annexure -10**  
(Referred to in paragraph 2.11.4)

**Statement showing details of loss due to award of work on nomination basis above 8 to 15 per cent from ceiling rate**

(Amount: ₹ in Lakh)

Sl. No.	Name of Bridge	Number of Nominations	Percent above ceiling Rate	Total Amount	Loss (v)- (v*107/100+Percent above)
(i)	(ii)	(iii)	(iv)	(v)	(vi)
<b>Katihar Division</b>					
1.	Bridge in 42 <sup>nd</sup> Km of Araria Kursela Palas Raod	8	15	16.20	1.13
2.	--do--	2	10	4.98	0.14
3.	Bridge in 18 <sup>th</sup> Km Katihar Pranpur Road	15	10	302.30	8.24
4.	Bridge in 1 <sup>st</sup> Km Kadma Kuruahat Road in Katihar	19	12	33.11	1.48
5.	---do--	35	10	69.54	1.90
6.	Bridge in 16 <sup>th</sup> Km Katihar Pranpur Road	17	10	59.50	1.62
7.	Bridge in 15 <sup>th</sup> Km Katihar Pranpur Road	08	10	68.51	1.87
8.	Bridge in 14 <sup>th</sup> Km Katihar Pranpur Road	4	12	33.51	1.50
9.	Bridge in 46 <sup>th</sup> Km Purnia Kadma Azampur Road	20	12	44.19	1.97
10.	Bridge in 10 <sup>th</sup> Km Araria Palasi Road	10	15	12.81	0.89
11.	Bridge in 28 <sup>th</sup> Km Araria Jokihat Road	12	15	14.40	0.99
12.	Bridge in 27 <sup>th</sup> Km Jokihat Palasi Road	8	15	18.96	1.32
13.	--do--	10	10	6.49	0.17
14.	Bridge in 40 <sup>th</sup> Km Araria Kursakanta Road	3	15	7.38	0.51
15.	Total	171		691.88	23.73
<b>Darbhanga Division</b>					
16.	Pusa Bridge	15	15	1227.44	85.39
17.	--do--	01	12	5.38	0.24
18.	--do--	02	10	0.76	0.04
	Total	18		1233.58	85.67

Sl. No.	Name of Bridge	Number of Nominations	Percent above ceiling Rate	Total Amount	Loss (v)- (v*107/100+Percent above)
<b>Bhagalpur Division</b>					
19.	Siddhighat to Ajgaibinath in Sultanganj	5	15	234.09	16.28
20.	--do--	10	10	152.68	4.16
21.	Bridge at 2 <sup>nd</sup> Km Khaira sona Road in Jamui	18	15	755.34	52.55
22.	--do--	4	10	55.77	1.52
23.	10 <sup>th</sup> Km Khaira Sona Road in Jamui	1	15	6.09	0.42
24.	---do---	5	10	219.16	5.98
25.	17 <sup>th</sup> Km Khaira Sona Road in Jamui	3	10	146.74	4.11
26.	Bridge in River Badua between Kumharsar and Dhauri Dhramsala in Banka	2	10	25.69	0.70
27.	Total	48		1595.56	85.72
	<b>Grand Total</b>	<b>237</b>		<b>3521.02</b>	<b>195.12</b>

Total number of nominations 15 percent above ceiling rate = 80

Total number of nominations 12 percent above ceiling rate = 44

Total number of nominations 10 percent above ceiling rate = 113

**Total Number of Nominations** **237**

**Annexure 11**  
**(Referred to in paragraph 2.13)**

**Statement showing Financial Performance of Bihar Rajya Pul Nirman Nigam Ltd. during 2005-10 (figures are provisional)**

(Amount: ₹ in crore)

<b>Particulars</b>	<b>2005-06 (Provisional)</b>	<b>2006-07 (Provisional)</b>	<b>2007-08 (Provisional)</b>	<b>2008-09 (Provisional)</b>	<b>2009-10 (Provisional)</b>
Paid up Capital	3.50	3.50	3.50	3.50	3.50
Bridge Development Fund	81.39	85.83	93.37	98.72	102.71
Reserves & Surplus (including capital grants but excluding depreciation reserve)	-	-	44.74	89.95	131.61
Current Liabilities & Provisions	616.43	1238.80	1802.38	2568.07	3290.70
<b>Total</b>	<b>701.32</b>	<b>1328.13</b>	<b>1943.99</b>	<b>2760.24</b>	<b>3528.52</b>
Gross Block	7.15	8.74	15.27	36.09	56.65
Less: Depreciation	4.70	4.94	5.52	6.38	10.64
Net Fixed Assets	2.45	3.80	9.75	29.71	46.01
Bridge Development Fund	24.97	34.87	85.58	96.03	96.17
Current Assets, Loans & Advances	662.72	1289.20	1848.66	2634.50	3386.34
Accumulated Losses	11.18	0.26	-	-	-
<b>Total</b>	<b>701.32</b>	<b>1328.13</b>	<b>1943.99</b>	<b>2760.24</b>	<b>3528.52</b>
Capital employed	48.74	54.20	56.03	96.14	141.65
<b>Working Results</b>					
Total Income	13.13	28.38	88.26	110.73	111.60
Total expenditure	7.16	11.16	12.21	20.30	23.79
Profit/(loss) before tax and adjustments	5.97	17.22	76.05	90.43	87.81
Centage charges earned	7.75	12.94	41.75	75.60	85.38
Centage as per cent of total income	59.03	45.60	47.30	68.27	76.51
Interest on Fixed Deposits	4.85	14.61	40.55	28.89	16.38
Interest on Fixed Deposits as per cent of total income	36.94	51.48	45.94	26.09	14.68

**Annexure – 12**  
**(Referred to in paragraph 3.5)**

**Statement showing cost of generation of electricity, revenue realisation, net surplus/loss and earnings and cost per unit of operation in respect of the Company during 2005-06 to 2009-10**

**(₹ in crore)**

Sl. No.	Description	2005-06	2006-07	2007-08	2008-09	2009-10 (Provisional)
1.	Income					
	Generation Revenue	13.61	12.86	11.67	10.48	6.78
	Other income including interest/subsidy	0.52	1.11	3.84	3.33	3.06
	<b>Total Income</b>	<b>14.13</b>	<b>13.97</b>	<b>15.51</b>	<b>13.81</b>	<b>9.84</b>
2.	Generation					
	Total generation (In MUs)	72.75	68.61	61.48	60.37	34.66
	Less: Auxiliary consumption (In MUs)	1.77	3.65	2.67	2.18	0.84
	<b>Total generation available for Transmission and Distribution (In MUs)</b>	<b>70.98</b>	<b>64.96</b>	<b>58.81</b>	<b>58.19</b>	<b>33.82</b>
3.	Expenditure					
(a)	Fixed cost					
(i)	Employees cost	2.00	2.20	2.49	2.80	3.65
	Administrative and General expenses	3.43	3.77	4.32	5.80	1.85
(ii)	Depreciation	4.06	4.79	5.48	6.28	7.33
(iii)	Interest and finance charges	5.08	6.20	11.45	11.80	15.92
	<b>Total fixed cost</b>	<b>14.57</b>	<b>16.96</b>	<b>23.74</b>	<b>26.68</b>	<b>28.75</b>
(b)	Variable cost					
(i)	Lubricants and consumables	1.34	1.86	2.05	2.01	2.16
(ii)	Depreciation and maintenance	0.39	0.83	0.56	1.54	1.08
	<b>Total variable cost</b>	<b>1.73</b>	<b>2.69</b>	<b>2.61</b>	<b>3.55</b>	<b>3.24</b>
C.	<b>Total cost 3(a) + (b)</b>	<b>16.30</b>	<b>19.65</b>	<b>26.35</b>	<b>30.23</b>	<b>31.99</b>
4.	Realisation (per unit)	1.92	1.98	1.98	1.80	2.00
5.	Fixed cost (₹ per unit)	2.05	2.61	4.04	4.58	8.50
6.	Variable cost (₹ per unit)	0.24	0.41	0.44	0.61	0.96
7.	Total cost per unit (5+6)	2.29	3.02	4.48	5.19	9.46
8.	Contribution (4-6) (₹ per unit)	1.68	1.57	1.54	1.19	1.04
9.	Profit (+)/Loss(-) (4-7)	-0.37	-1.04	-2.50	-3.39	-7.46

**Annexure – 13**  
(Referred to in paragraph 3.5)

**Statement showing cost of generation of electricity, revenue realisation, net surplus/ loss and earnings and cost per unit of operation in respect of the BTPS during 2005-06 to 2009-10**

(₹ in crore)

Sl. No.	Description	2005-06	2006-07	2007-08	2008-09	2009-10
1.	Income					
	Generation Revenue	25.58	7.66	35.45	29.23	68.66
	Other income including interest/subsidy	0.19	0.15	0.68	0.68	0.17
	<b>Total Income</b>	<b>25.77</b>	<b>7.81</b>	<b>36.13</b>	<b>29.91</b>	<b>68.83</b>
2.	Generation					
	Total generation (In MUs)	120.95	37.25	132.75	102.94	264.71
	Less: Auxiliary consumption (in MUs)	25.13	10.65	18.40	12.73	38.11
	<b>Total generation available for Transmission and Distribution (in MUs)</b>	<b>95.82</b>	<b>26.60</b>	<b>114.35</b>	<b>90.21</b>	<b>226.60</b>
3.	Expenditure					
(a)	Fixed cost					
(i)	Employees cost	16.43	17.71	19.82	21.72	30.46
(ii)	Administrative and General expenses	1.14	0.79	0.90	0.98	1.08
(iii)	Depreciation	4.41	3.76	0.94	2.43	2.43
	<b>Total fixed cost</b>	<b>21.98</b>	<b>22.26</b>	<b>21.66</b>	<b>25.13</b>	<b>33.97</b>
(b)	Variable cost					
(i)	Fuel consumption					
	(a) Coal	17.32	5.34	26.12	14.85	46.31
	(b) Oil	4.74	1.30	10.81	5.72	16.34
	(c) Gas	0.34	0.20	0.13	0.37	-
	(d) Other fuel related cost including shortages/surplus	-	0.02	-	-	4.01
(ii)	Cost of water (hydel/ thermal/ gas/ others)	2.43	2.38	2.81	2.76	3.15
(iii)	Lubricants and consumables	0.27	0.08	0.15	0.80	0.50
(iv)	Repair and maintenance	2.87	1.24	2.18	3.56	4.96
	<b>Total variable cost</b>	<b>27.97</b>	<b>10.56</b>	<b>42.20</b>	<b>28.06</b>	<b>75.27</b>
C.	<b>Total cost 3(a) + (b)</b>	<b>49.95</b>	<b>32.82</b>	<b>63.86</b>	<b>53.19</b>	<b>109.24</b>
4.	Realisation (₹ per unit)	2.67	2.88	3.10	3.24	3.03
5.	Fixed cost (₹ per unit)	2.29	8.37	1.89	2.79	1.50
6.	Variable cost (₹ per unit)	2.92	3.97	3.69	3.11	3.32
7.	<b>Total cost per unit (5+6)</b>	<b>5.21</b>	<b>12.34</b>	<b>5.58</b>	<b>5.90</b>	<b>4.82</b>
8.	Contribution (4-6) (₹ per unit)	-0.25	-1.09	-0.59	0.13	-0.29
9.	<b>Profit (+)/Loss(-) (4-7)</b>	<b>-2.54</b>	<b>-9.46</b>	<b>-2.48</b>	<b>-2.66</b>	<b>-1.79</b>



## Annexure – 14

(Referred to in paragraph 3.7)

## Statement showing operational performance of Bihar State Electricity Board/Bihar State Hydro Electric Power Corporation Limited

Sl. No	Particulars	2005-06	2006-07	2007-08	2008-09	2009-10
1.	Installed capacity	(MW)				
(a)	Thermal	320.00	320.00	320.00	320.00	320.00
(b)	Hydel	44.10	45.10	47.10	51.10	52.80
	TOTAL	364.10	365.10	367.10	371.10	372.80
2.	Normal maximum demand	1175.00	1275.00	1800.00	1900.00	2500.00
	Percentage increase over previous year	-	8.51	41.18	5.56	31.58
3.	Power generated	(MKWH)				
(a)	Thermal	120.95	37.25	132.75	102.94	264.71
(b)	Hydel	72.75	68.61	61.48	60.37	34.66
	TOTAL	193.70	105.86	194.23	163.31	299.37
	Percentage increase/decrease (-) over previous year	-	(-45.35)	83.48	(-15.92)	83.31
4	LESS: Auxiliary consumption					
(a)	Thermal	25.13	10.65	18.40	12.73	38.11
	(Percentage)	20.78	28.59	13.86	12.37	14.40
(b)	Hydel	1.77	3.65	2.67	2.18	0.84
	(Percentage)	2.43	5.32	4.34	3.61	2.42
	TOTAL	26.90	14.30	21.07	14.91	38.95
	(Percentage)	13.89	13.51	10.85	9.13	13.01
5.	Net power generated	166.80	91.56	173.16	148.40	260.42
5A	Actual power fed into Grid (in MUs)	148.73 (52.91+95.82)	73.36 (46.76+26.60)	159.58 (45.23+114.35)	131.75 (41.54+90.21)	241.89 (15.29+226.60)
6.	Total demand (in MUs)	10293.00	11169.00	15768.00	16644.00	21900.00
7.	Deficit(-)power (In MU)	(-)10144.27	(-)11095.64	(-)15608.42	(-)16512.25	(-)21658.11
8.	Power purchased (MU)					
(a)	Within the State					
	(i)Government Undertakings	7234.69	7884.60	7707.68	8588.71	9349.88
	(ii)Private (sugar mills)	-	-	2.32	13.12	11.12
(b)	Total power purchased(as furnished by BSEB)	7234.69	7884.60	7710.00	8601.83	9361.00
9.	Net deficit (MU) 7 – 8(b)	2909.58	3211.04	7898.42	7910.42	12297.11

Annexure – 15

(Referred to in paragraph 3.9)

Statement showing case studies of Small Hydroelectric Projects (SHP) executed by the Company during 2005-06 to 2009-10

Sl. No.	Title of the case study	Provisions made in the DPR/agreement	Status of execution of the projects	Deficiency in execution	Final impact
<b>1</b>	<b>Triveni SHP</b>				
	(a) Delay in execution	-Estimated cost ₹ 9.15 crore -To be completed within 48 months from the date of payment of first mobilization advance; -Scheduled time for completion of this project was October 2005.	-Awarded (April 2001) to an agency on turnkey basis, for ₹ 13.50 crore; -Mobilisation advance Granted in October 2001; - Project commissioned in February 2009; -Actual expenditure as on 31 <sup>st</sup> March 2010 was ₹ 19.38 crore; - Final bills of the agency yet to settled.	-Delay in granting of advance (six months); -Delay in acquisition of land; -Delay in supply of (E/M)equipments by the contractor etc.	-Cost overrun to estimated cost (₹ 10.23 crore); - Time overrun (39 months); - Delay was controllable by the Management by better planning and monitoring of project execution activities.
	(b) Loss of generation due to delay in completion of the project	-Company envisaged generation of 15.77 MUs of power per annum by October 2005.	-Since, water for generation of power was available; the delay in commissioning of the project caused potential loss of revenue to the company.	-do-	-Loss of generation valued ₹ 10.25 crore
	(c) Avoidable payment to the agency	-Execution of project was awarded to an agency (M/s Pareek Power Pvt. Ltd., Ranchi) on turnkey basis; - supply of E/M equipment was to be made by sub agency-(M/s Jyoti Limited, Varodara) at a cost of ₹ 4.41 crore for which both agency had made an agreement.	-Supply of the E/M equipments were being delayed due to financial constraint of the subcontractor; - Company directly made advance payment to the sub agency and decided (July 2003) that M/s Pareek Power Pvt. Ltd. would get an extra payment of thirty per cent on actual bills of supply of E/M equipments by M/s Jyoti Ltd; -A payment of ₹ 1.09 crore (30 per cent of ₹ 3.96 crore paid to M/s Jyoti Ltd.) was paid to M/s Pareek Power Pvt. Ltd. as commission.	-When the agreement was made with the agency for turn key execution, the extra payment made of ₹ 1.09 crore was, an avoidable payment and lacked justification.	-Avoidable payment of ₹ 1.09 crore.



	(b) Extra expenditure on execution of works not envisaged in the DPR	-Not originally mentioned in the DPR and agreement	-Test check of the running account bills, DPR and the quantities incorporated in the agreement with the contractor revealed that extra expenditure of ₹ 1.23 crore was incurred.	-It reflected the perfunctory manner in which the survey/investigation, DPRs and estimates were prepared.	-Extra expenditure of: ₹ 1.23 crore
	(c) Extra expenditure due to increase in runner Diameter of Turbine and Gearbox		-Scrutiny of files/records of projects revealed that an additional amount of ₹ 0.76 crore was incurred due to increase in size of runner diameter and Gearbox from the designated size as per DPR/agreement.	-It reflected the perfunctory manner in which the survey/investigation, DPRs and estimates were prepared.	-Extra expenditure of ₹ 0.76 crore
<b>4</b>	<b>Nasiriganj SHP</b>				
	(a) Excess expenditure due to enhancement of tendered quantity	-In all major contracts a provision regarding variation in quantities is invariably included; -Usually the variation in agreed quantities is limited to 25 per cent.	-Percentage of excess work executed in respect of ten items exceeded the limit of 25 per cent ; -The absence of an enabling provision for capping the maximum limit of quantity of works in the agreement resulted (March 2010) in excess expenditure.	-Quantity variation clause i.e. capping the variation in the agreed quantities was not included in the contract agreements for execution of projects.	-Excess expenditure ₹ 1.65 crore; -It reflected the perfunctory manner in which the survey/investigation, DPRs and estimates were prepared.
	(b) Extra expenditure due to increase in runner Diameter of Turbine and Gearbox		-Scrutiny of files/records of projects revealed that an additional amount of ₹ 0.22 crore was incurred due to increase in size of runner diameter and Gearbox from the designated size as per DPR/agreement.	-It reflected the perfunctory manner in which the survey/investigation, DPRs and estimates were prepared.	-Extra expenditure of ₹ 0.22 crore
<b>5</b>	Lack of effective control over the completion of various projects .	-17 projects (total capacity of 16.75 MW funded/sanctioned (May 2003) by NABARD with the scheduled date of completion by 31 <sup>st</sup> March 2005;	-None of the 17 projects (total capacity of 16.75 MW) got completed in scheduled date of completion i.e. 31 <sup>st</sup> March 2005;	-After a lapse of seven years from the sanction of the projects, only six projects (of capacity of 7.7 MW) have been completed (November 2010).	-Lack of effective planning and monitoring over completion of projects.

**Annexure – 16**  
**(Referred to in paragraph 3.11)**

**Statement showing station-wise value of excess consumption of Coal in Bihar State Electricity Board**

Sl. No.	Particulars	2005-06	2006-07	2007-08	2008-09	2009-10
BTPS unit 6 & 7						
1.	Unit generated (MUs)	120.95	37.25	132.75	102.94	264.71
2.	Coal required as per norms (MT) 0.519 kg/kwh	62773	19333	68897	53426	137384
3.	Coal consumed (MT)	125985	39398	135280	98158	260304
4.	Excess consumption (MT) (3 – 2)	63212	20065	66383	44732	122920
5.	Rate per MT (₹)	1318.37	1496.95	1551.95	1243.76	1750
6.	Coal consumed per Unit (Kg.) [(3 x 1000) / 1]	1.042	1.058	1.019	0.954	0.983
7.	Value of excess coal (₹ in crore) (4 x 5)	8.33	3.01	10.30	5.56	21.51

**Annexure – 17**  
**(Referred to in paragraph 3.13)**

**Statement showing station wise year-wise details of energy to be generated as per design, actual generation and plant load factor as per design vis-à-vis actual in Bihar State Electricity Board**

Year	Energy Generation (MU)		Plant Load Factor (per cent)	
	As per design	Actual	As per design	Actual
Barauni Thermal Power Station Unit No. 6				
2005-06	963 .60	83.48	100	8.66
2006-07	Not in Operation			
2007-08	963 .60	132.75	100	13.77
2008-09	963 .60	102.94	100	10.68
2009-10	963 .60	264.71	100	27.47
Barauni Thermal Power Station Unit No. 7				
2005-06	963.60	37.47	100	3.88
2006-07	963.60	37.25	100	3.86
2007-08	Not in operation	-	-	--
2008-09	Not in operation	-	-	-
2009-10	Not in operation	-	-	-
Total	5781.60	658.60		

**Annexure – 18**  
**(Referred to in paragraph 3.13)**

**Statement showing year-wise details of energy to be generated as per design, actual generation and plant load factor as per design vis-à-vis actual in BSHPC Ltd.**

Year	Energy Generation (MU)		Plant Load Factor (per cent)	
	As per design	Actual	As per design	Actual
2005-06	243.60	72.75	50	29.86
2006-07	248.91	68.61	50	27.56
2007-08	264.54	61.48	50	23.24
2008-09	279.48	60.37	50	21.60
2009-10	284.83	34.66	50	11.60
Total	1321.36	297.87		

**Annexure – 19**  
**(Referred to in paragraph No. 3.15)**

**Statement showing delay in maintenance of Units in Barauni Thermal Power Station of Bihar State Electricity Board**

<b>Sl. No.</b>	<b>Unit Name/ No.</b>	<b>When due</b>	<b>When done</b>	<b>Delay</b>
1	4	1989	R&M / LE could not be taken up	-
2	5	1991	R&M / LE could not be taken up	-
3	6	2003	R&M / LE to be taken up after completion of the same work of unit no.7	7 years
4	7	2005	Taken up in June 2010 (work in progress in November 2010)	5 years



## Annexure-20

(Referred to in paragraph 4.11)

## Statement of department wise outstanding Inspection Reports (IRs)

Sl. No.	Name of Department	No. of PSUs	No. of outstanding IRs	No. of outstanding paragraphs	Year from which paragraphs outstanding
1.	Industry	3	8	45	2004-05
2.	Information Technology	1	2	8	2007-08
3.	Forest & Environment	1	4	22	2004-05
4.	Agriculture	1	3	5	2004-05
5.	Energy	2	466	1067	2004-05
6.	Animal Husbandry	1	1	5	2006-07
7.	Food & Consumer Protection	1	6	41	2004-05
8.	Tourism	1	2	15	2005-06
9.	Human Resources Development	1	2	10	2004-05
10.	Road Construction	1	1	2	2007-08
11.	Home	1	4	23	2004-05
12.	Mines and Geology	1	1	6	2004-05
13.	Transport	1	2	12	2004-05
14.	Co-operative	1	5	21	2004-05
15.	Excise	1	1	5	2008-09
16.	Minority welfare	1	2	4	2005-06
<b>Total</b>		<b>19</b>	<b>510</b>	<b>1291</b>	

**Annexure – 21**

**(Referred to in paragraph 4.11)**

**Statement of department wise draft paragraphs/reviews, reply to which are awaited**

<b>Sl. No.</b>	<b>Name of Department</b>	<b>No. of draft paragraphs</b>	<b>No. of reviews</b>	<b>Periods of issue</b>
1.	Energy	7	1	April-September 2010
2.	Food and Consumer Protection	3	-	April-November 2010
3.	Information Technology	1	-	May 2010
4.	Road Construction	-	1	July 2010