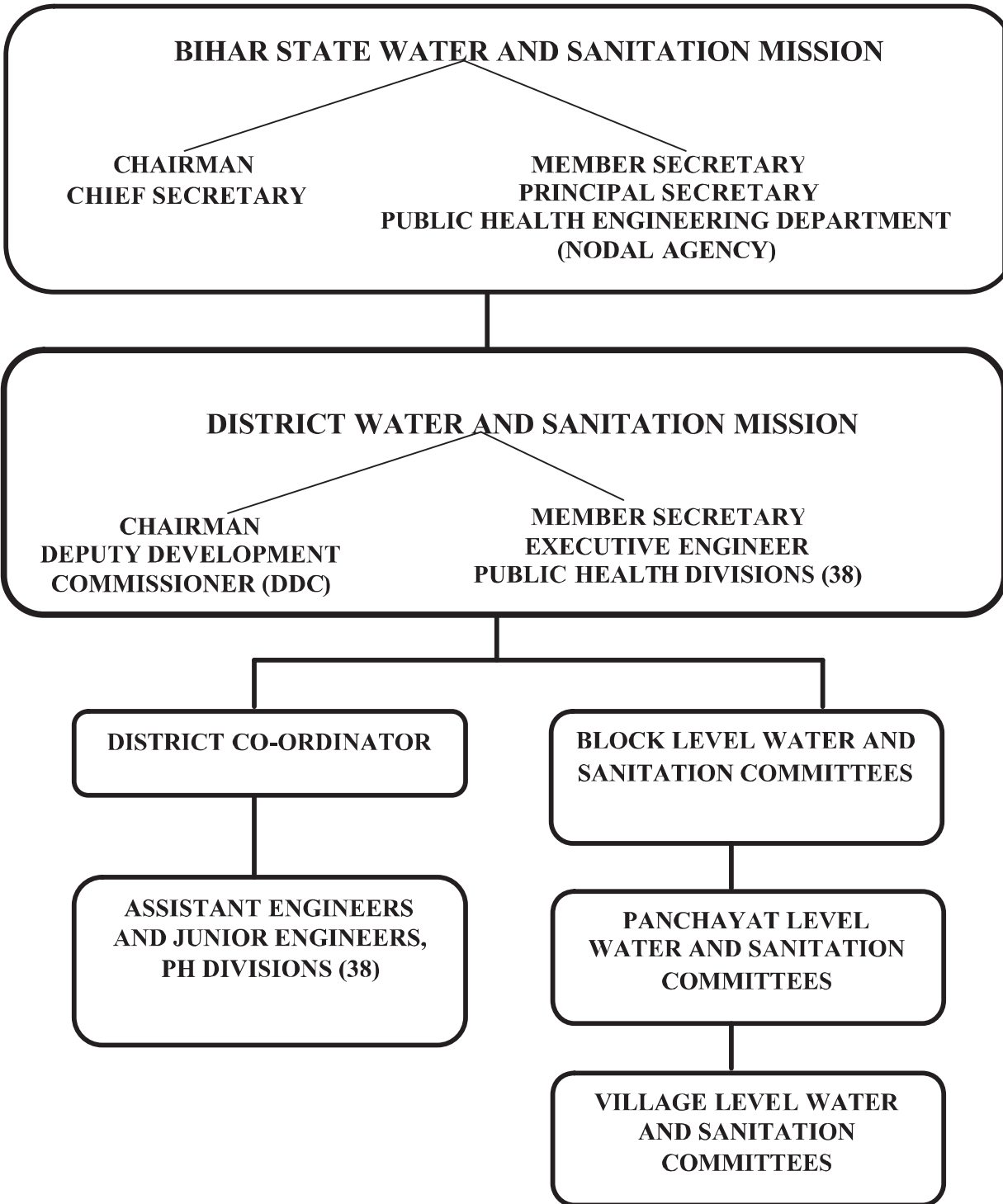


**APPENDIX – 1.1.1**  
*(Refer Paragraph 1.1.2; Page-2)*

*Organogram of Total Sanitation Campaign*



**APPENDIX – 1.1.2**  
(Refer Paragraph 1.1.8.1; Page-6)

**Statement regarding release of funds by Central and State Governments in test-checked districts**

(₹ in lakh)

Sl. No.	Name of District	Project cost		Central share released		Matching share required	Matching share released		Delay of release of state share			
		Central	State	Date	Amount		Date	Amount				
1	Bhagalpur	3485.00	1443.51	upto	59.72	297.80	upto	18.66	1.5 to 26 months			
				2004-05				2004-05				
							29.03.07	119.44			19.1.06	1.20
							01.05.08	599.5109			30.3.07	9.00
											1.11.07	18.18
											14.1.08	48.00
											11.4.08	31.51
											15.7.08	47.00
											10.6.09	90.14
											30.6.10	139.75
					<b>778.6709</b>		<b>403.44</b>					
					(22.34 %)							
2	Gaya	6000.47	2571.30	3.1.02	417.24	556.94	29.3.02	26.00	2 to 63 months			
							31.12.07	882.61			3.1.04	17.10
											2.3.05	14.88
											19.1.06	9.94
											26.7.06	23.83
											30.3.07	19.20
											17.1.08	26.82
											27.3.08	63.96
											11.4.08	33.95
					15.7.08	97.20						
					27.3.10	110.00						
					<b>1299.85</b>		<b>442.87</b>					
					(21.66 %)							
3	Jamui	2438.81	989.17	9.6.04	10.00	124.54	26.7.06	50.51	2 to 63 months			
							17.12.05	297.09			30.3.07	36.51
											17.1.08	50.82
											11.4.08	20.84
											15.7.08	14.00
											11.6.09	61.77
											29.3.10	47.80
					<b>307.09</b>		<b>282.25</b>					
					(12.59 %)							

Sl. No.	Name of District	Project cost		Central share released		Matching share required	Matching share released		Delay of release of state share
		Central	State	Date	Amount		Date	Amount	
4	Katihar	4685.81	1803.63	upto 2004-05	400.51	823.68	upto 2004-05	58.23	5 to 17 months
				2.8.07	669.45		3.3.06	10.80	
				1.10.08	1069.96		24.11.06	22.95	
							24.4.07	20.40	
							28.1.08	28.26	
							17.4.08	26.76	
							30.4.08	32.09	
							18.7.08	149.30	
							13.6.09	112.63	
							28.3.10	111.22	
					<b>2139.92</b>			<b>572.64</b>	
					<b>(45.67%)</b>				
5	Muzaffarpur	6389.71	2370.69	1.2.02	380.47	1422.41	29.3.03	26.00	8 to 76 months
				13.7.07	1111.91		3.1.04	17.00	
				18.12.08	2341.45		2.3.05	16.13	
							19.1.06	8.40	
							25.5.06	0.99	
							26.7.06	21.58	
							8.2.07	0.26	
							8.2.07	1.60	
							17.4.07	17.40	
							30.6.07	2.68	
							31.3.08	79.32	
							31.3.08	24.42	
							29.4.08	55.13	
							29.7.08	229.50	
							28.3.10	237.33	
					<b>3833.83</b>			<b>737.74</b>	
					<b>(60 %)</b>				
6	Patna	4850.11	2104.22	26.3.01	263.29	796.87	31.3.02	35.38	2 to 33 months
				15.2.02	152.86		31.1.04	13.10	
				27.9.07	678.14		2.3.05	12.38	
				2009-10	742.46		14.1.06	10.02	
							30.3.07	42.91	
							26.7.06		
							1.11.07	104.40	
							14.7.08		
							11.4.08	125.44	
							15.7.08		
							11.6.09	131.40	
							2009-10	101.67	
					<b>1836.75</b>			<b>576.69</b>	
					<b>(37.87 %)</b>				

Sl. No.	Name of District	Project cost		Central share released		Matching share required	Matching share released		Delay of release of state share				
		Central	State	Date	Amount		Date	Amount					
7	Saharsa	2057.77	867.11	2005-06	10.00	266.29	1.12.06	51.47	2 to 42 months				
							17.3.06			204.94	7.6.07		
							21.12.09			416.90	17.1.08		
											27.3.08		
											11.4.08	72.90	
											15.7.08		
											30.3.09	96.53	
											12.6.09		
											26.6.09		
											1.9.09		
											11.3.10		
											<b>631.84</b>		<b>220.90</b>
											<b>(30.71 %)</b>		
8	Samastipur	6364.40	2775.37	2003-04	59.72	575.89	2003-04	13.70					
							2007-08	1260.64	2004-05	4.90			
									2005-06	1.20			
									2007-08	70.32			
									2008-09	145.94			
									2009-10	115.00			
										<b>1320.36</b>	<b>351.06</b>		
										<b>(20.75 %)</b>			
9	Saran	4085.42	1691.65	upto 2004-05	392.91	646.21	upto 2004-05	53.22					
							2007-08	551.52	2005-06	9.00			
							2009-10	616.05	2006-07	22.27			
									2007-08	108.40			
									2008-09	114.83			
									2009-10	145.09			
										<b>1560.48</b>	<b>452.80</b>		
					<b>(38.20 %)</b>								

**APPENDIX – 1.1.3***(Refer Paragraph 1.1.8.1; Page-6)***Statement regarding component wise Central, State and beneficiary shares and expenditure thereagainst during 2005-10**

Sl. No.	Component	Amount earmarked as per cent of the TSC project outlay	Contribution per cent			Expenditure		Percentage of expenditure against the fund available (₹ 47818.01 lakh) in the State	Percentage of expenditure against the fund available (₹ 17749.18 lakh) in the test-checked districts
			GOI	State	Beneficiary Households/Community	State	Test-checked districts		
1	Start up and IEC	up to 15%	80	20	0	2485.98	1024.15	5.20	5.77
2	Alternate Delivery Mechanism (PCs/RSMs)	up to 5%	80	20	0	314.49	47.09	0.66	0.27
3	(i) Individual latrines for BPL/ disabled households	Actual amount required for full coverage	60	20	20	26562.76	10371.00	55.55	58.43
	(ii) Community Sanitary Complexes	Actual amount required for full coverage	60	20	20	160.67	70.46	0.34	0.40
4	Individual household latrines for APL	Nil	0	0	100	7128.64	1344.64	14.91	7.58
5	Institutional Toilets including School and Anganwadi Sanitation (Hardware and Support Services)	Actual amount required for full coverage	70	30	0	8510.34	2499.81	17.80	14.08
6	Administrative charges, including training, staff support, services, monitoring and evaluation etc.	less than 5%	80	20	0	582.85	201.29	1.22	1.13
7	Solid/ liquid waste management (Capital cost)	up to 10%	60	20	20	0	0	0.00	0.00

**APPENDIX- 1.2.1**

*(Refer: Paragraph: 1.2.8.3; Page -25)*

**Statement showing expenditure of Detailed Appropriation Accounts and figures provided by the Secondary Education Department**

*(₹ in crore)*

Year	Expenditure						Difference		
	As per detailed appropriation account			As per Department			Plan	Non-Plan	Total
	Plan	Non-Plan	Total	Plan	Non-Plan	Total			
2005-06	2.10	712.14	714.24	13.18	NA	13.18	11.08	NA	11.08
2006-07	66.66	1029.30	1095.96	NA	NA	NA	NA	NA	NA
2007-08	13.03	869.45	882.48	NA	728.65	728.65	NA	140.80	140.80
2008-09	50.89	1397.29	1448.18	56.47	882.64	939.11	5.58	514.65	520.23
2009-10	147.32	1377.69	1525.01	NA	1570.92	1570.92	NA	193.23	193.23
<b>Total</b>	<b>280.00</b>	<b>5385.87</b>	<b>5665.87</b>	<b>69.65</b>	<b>3182.21</b>	<b>3251.86</b>	<b>16.66</b>	<b>848.68</b>	<b>865.34</b>

**APPENDIX- 1.2.2***(Refer: Paragraph: 1.2.9.1; Page - 25)***Statement showing enrolment of students in Classes IX to XII during 2005-10**

Class		2005-06	2006-07	2007-08	2008-09	2009-10
IX	Boys	33737	31328	33454	36308	46207
	Girls	20032	18269	21022	25645	35516
X	Boys	29833	29003	29735	31926	40906
	Girls	16424	16222	18832	20949	29810
XI	Boys	466	554	1446	2705	3401
	Girls	389	429	911	1218	1917
XII	Boys	322	507	795	1462	2944
	Girls	342	359	505	900	1526
<b>Total</b>	<b>Boys</b>	<b>64358</b>	<b>61392</b>	<b>65430</b>	<b>72401</b>	<b>93458</b>
	<b>Girls</b>	<b>37187</b>	<b>35279</b>	<b>41270</b>	<b>48712</b>	<b>68769</b>
<b>Grand total</b>		<b>101545</b>	<b>96671</b>	<b>106700</b>	<b>121113</b>	<b>162227</b>

**Category wise enrolment of students in class IX to XII during 2005-10**

Category of students	2005-06					2009-10				
	IX	X	XI	XII	Total	IX	X	XI	XII	Total
SC	4785	3998	59	36	8878	8977	7500	480	313	17270
ST	517	436	7	10	970	851	596	77	33	1557
OBC	29268	24705	405	270	54648	46539	39254	3010	2317	91120
Others	19199	17118	384	348	37049	25356	23366	1751	1807	52280
<b>Total</b>	<b>53769</b>	<b>46257</b>	<b>855</b>	<b>664</b>	<b>101545</b>	<b>81723</b>	<b>70716</b>	<b>5318</b>	<b>4470</b>	<b>162227</b>

### APPENDIX- 1.2.3

(Refer: Paragraph: 1.2.10; Page - 27)

#### Statement showing non-availability of infrastructural facilities in 241 test-checked schools

Sl. No.	Name of districts	Total no. of test-checked schools	Required class-rooms (i.e. 8 rooms as per the norm) not available in number of schools	Number of schools lacking infrastructure facilities						
				Laboratory room	Library room	Computer room	Sports room	Head-masters rooms	Electricity	Utilities for students
1	Begusarai	21	16	10	14	15	19	14	15	14
2	Bhagalpur	28	15	24	17	21	25	10	9	12
3	Katihar	16	10	2	8	10	14	4	10	4
4	Muzaffarpur	27	18	21	19	17	25	13	22	12
5	Nalanda	36	26	32	26	31	35	8	30	15
6	Nawada	18	8	14	7	15	13	8	14	8
7	Saharsa	15	9	13	9	10	12	8	10	7
8	Samastipur	29	13	28	21	20	23	15	19	15
9	Saran	26	13	24	18	24	24	12	26	9
10	Vaishali	25	16	21	21	0	0	0	19	0
	<b>Total</b>	<b>241</b>	<b>144</b>	<b>189</b>	<b>160</b>	<b>163</b>	<b>190</b>	<b>92</b>	<b>174</b>	<b>96</b>



**APPENDIX- 1.2.4***(Refer: Paragraph: 1.2.13.1; Page - 32)***Statement showing the status of District Computer Centres**

Sl.No.	Name of districts	No. of computer supplied	Period during which training was not provided	Remarks
1	Begusarai	50	January 2007 to June 2010	25 computers were stolen and balance computers were transferred (June 2010) to district authorities.
2	Bhagalpur	50	June 2008 to March 2010	Due to technical problem 21 computers were unusable and balance 29 computer were taken by the DDC for preparing BPL lists.
3	Katihar	50	April 2007 to June 2010	47 computers were out of order due to defective equipments since April 2007.
4	Muzaffarpur	50	April 2005 to August 2009	10 computers were out of order and 3 were lying with DM/DDC.
5	Nalanda	50	2005-06	05 computers were defective from (May 2009).
6	Nawada	49	NA	39 computers were defective due to leakage of roof of computer room since 2008.
7	Saharsa	50	Training not yet started	Generator set was not purchased as yet. Registration of society was not done and all computers were not fully installed.
8	Samastipur	50	July 2006 to July 2007	Faculty-cum-system administrator was not available as all the computers remained unused.
9	Saran	50	July 2008 to March 2010	24 computers were stolen (July 2006) and 19 were damaged during training (July 2008 to June 2009) of NAREGA. Generator set was not purchased as yet.
10	Vaishali	50	January 2008 to March 2010	BPL works were taken and in this process one UPS went out of order. Generator set was also not purchased as yet.

**APPENDIX 1.3.1**  
**(Refer: Paragraph 1.3.7.1; Page- 39)**  
**Statement of excess expenditure**

(₹ in lakh)

Name of item and head of account	2005-06			2006-07			2009-10			Total Excess expenditure
	Grant	Expenditure	Excess	Grant	Expenditure	Excess	Grant	Expenditure	Excess	
Jail Inspectorate 2056-001-0001	95.94	96.94	1.00	-	-	-	-	-	-	1.00
Training to prisoners 2056-003-0002	-	-	-	-	-	-	23.05	24.85	1.80	1.80
Non Plan Central jail 2056-101-0001	-	-	-	-	-	-	3533.87	3614.07	80.20	80.20
Non Plan District jail 2056-101-0002	-	-	-	3286.89	3317.10	30.21	5336.49	5384.93	48.44	78.65
Prison under police protection 2056-800-0002	4.19	19.26	15.07	-	-	-	-	-	-	15.07
	<b>100.13</b>	<b>116.20</b>	<b>16.07</b>	<b>3286.89</b>	<b>3317.10</b>	<b>30.21</b>	<b>8893.41</b>	<b>9023.85</b>	<b>130.44</b>	<b>176.72</b>

**APPENDIX – 1.3.2**  
(Refer: Paragraph 1.3.8.1; Page-41)

**Statement showing the ratio of warders to occupancy**

Year	Name of Jail	Fixed capacity	Occupancy	Percentage occupancy	Number of warders		Ratio	
					sanctioned	posted	6/4	7/4
1	2	3	4	5	6	7	8	9
2005-06	Central Jail, Beur, Patna	1620	3150	194	150	89	1:21	1:35
2006-07	Central Jail, Beur, Patna	1860	3289	177	150	87	1:22	1:38
2007-08	Central Jail, Beur, Patna	2240	2712	121	200	96	1:14	1:28
2008-09	Central Jail, Beur, Patna	2360	2785	118	200	88	1:14	1:32
2009-10	Central Jail, Beur, Patna	2360	2731	116	200	82	1:14	1:33
<b>2005-10</b>	<b>Central Jail, Beur, Patna</b>	<b>10440</b>	<b>14667</b>	<b>140</b>	<b>900</b>	<b>442</b>	<b>1:16</b>	<b>1:33</b>
2005-06	Central Jail, Bhagalpur	1962	1434	73	207	67	1:7	1:21
2006-07	Central Jail, Bhagalpur	1962	1659	85	207	67	1:8	1:25
2007-08	Central Jail, Bhagalpur	1962	1547	79	200	58	1:8	1:27
2008-09	Central Jail, Bhagalpur	1962	1361	69	200	57	1:7	1:24
2009-10	Central Jail, Bhagalpur	1962	1456	74	200	57	1:7	1:26
<b>2005-10</b>	<b>Central Jail, Bhagalpur</b>	<b>9810</b>	<b>7457</b>	<b>76</b>	<b>1014</b>	<b>306</b>	<b>1:7</b>	<b>1:24</b>
2005-06	Central Jail, Bhagalpur Special	3288	1313	40	236	183	1:6	1:7
2006-07	Central Jail, Bhagalpur Special	3288	1607	49	236	182	1:7	1:9
2007-08	Central Jail, Bhagalpur Special	3288	2176	66	236	180	1:9	1:12
2008-09	Central Jail, Bhagalpur Special	3288	2204	67	236	132	1:9	1:17
2009-10	Central Jail, Bhagalpur Special	3288	1731	53	236	120	1:7	1:14
<b>2005-10</b>	<b>Central Jail, Bhagalpur Special</b>	<b>16440</b>	<b>9031</b>	<b>55</b>	<b>1180</b>	<b>797</b>	<b>1:8</b>	<b>1:11</b>
2005-06	Central Jail, Buxar	994	1484	149	171	60	1:9	1:25
2006-07	Central Jail, Buxar	994	1225	123	171	59	1:7	1:21
2007-08	Central Jail, Buxar	1126	1020	91	200	65	1:5	1:16
2008-09	Central Jail, Buxar	1126	1010	90	200	64	1:6	1:16
2009-10	Central Jail, Buxar	1126	989	87	200	62	1:6	1:16
<b>2005-10</b>	<b>Central Jail, Buxar</b>	<b>5366</b>	<b>5728</b>	<b>107</b>	<b>942</b>	<b>310</b>	<b>1:6</b>	<b>1:18</b>
2005-06	Central Jail, Gaya	1032	2505	243	126	91	1:20	1:28
2006-07	Central Jail, Gaya	1032	2570	249	126	100	1:20	1:26
2007-08	Central Jail, Gaya	1032	2175	211	205	61	1:11	1:36
2008-09	Central Jail, Gaya	1478	1960	133	205	73	1:10	1:27
2009-10	Central Jail, Gaya	1478	1641	111	205	73	1:8	1:22
<b>2005-10</b>	<b>Central Jail, Gaya</b>	<b>6052</b>	<b>10851</b>	<b>179</b>	<b>867</b>	<b>398</b>	<b>1:13</b>	<b>1:27</b>
2005-06	Central Jail, Muzaffarpur	1211	2406	199	138	40	1:17	1:60
2006-07	Central Jail, Muzaffarpur	1211	2749	227	138	48	1:20	1:57

Year	Name of Jail	Fixed capacity	Occupancy	Percentage occupancy	Number of warders		Ratio	
					sanctioned	posted	6/4	7/4
1	2	3	4	5	6	7	8	9
2007-08	Central Jail, Muzaffarpur	1211	2277	188	138	81	1:17	1:28
2008-09	Central Jail, Muzaffarpur	2135	2079	97	200	57	1:10	1:36
2009-10	Central Jail, Muzaffarpur	2135	2333	109	200	55	1:12	1:42
<b>2005-10</b>	<b>Central Jail, Muzaffarpur</b>	<b>7903</b>	<b>11844</b>	<b>150</b>	<b>814</b>	<b>281</b>	<b>1:15</b>	<b>1:42</b>
2005-06	District Jail, Ara	400	1291	323	49	40	1:26	1:32
2006-07	District Jail, Ara	400	1414	354	49	47	1:28	1:30
2007-08	District Jail, Ara	400	1556	389	100	28	1:16	1:55
2008-09	District Jail, Ara	664	1351	203	100	24	1:14	1:56
2009-10	District Jail, Ara	664	1127	170	100	24	1:11	1:46
<b>2005-10</b>	<b>District Jail, Ara</b>	<b>2528</b>	<b>6739</b>	<b>267</b>	<b>398</b>	<b>163</b>	<b>1:17</b>	<b>1:41</b>
2005-06	District Jail, Begusarai	425	1435	338	45	38	1:32	1:38
2006-07	District Jail, Begusarai	825	1233	149	45	36	1:27	1:34
2007-08	District Jail, Begusarai	957	1227	128	45	42	1:27	1:29
2008-09	District Jail, Begusarai	957	1326	139	103	36	1:13	1:37
2009-10	District Jail, Begusarai	957	1315	137	103	37	1:13	1:36
<b>2005-10</b>	<b>District Jail, Begusarai</b>	<b>4121</b>	<b>6536</b>	<b>159</b>	<b>341</b>	<b>189</b>	<b>1:19</b>	<b>1:35</b>
2005-06	District Jail, Bhagalpur Women	83	99	119	12	07	1:8	1:14
2006-07	District Jail, Bhagalpur Women	83	102	123	12	07	1:9	1:15
2007-08	District Jail, Bhagalpur Women	83	118	142	12	06	1:10	1:20
2008-09	District Jail, Bhagalpur Women	83	95	114	12	06	1:8	1:16
2009-10	District Jail, Bhagalpur Women	83	85	102	12	06	1:7	1:14
<b>2005-10</b>	<b>District Jail, Bhagalpur Women</b>	<b>415</b>	<b>499</b>	<b>120</b>	<b>60</b>	<b>32</b>	<b>1:8</b>	<b>1:16</b>
2005-06	District Jail, Biharsharif	275	906	329	100	18	1:09	1:50
2006-07	District Jail, Biharsharif	275	1103	401	100	18	1:11	1:61
2007-08	District Jail, Biharsharif	539	952	177	100	18	1:10	1:53
2008-09	District Jail, Biharsharif	539	858	159	100	18	1:9	1:48
2009-10	District Jail, Biharsharif	739	629	85	100	18	1:6	1:35
<b>2005-10</b>	<b>District Jail, Biharsharif</b>	<b>2367</b>	<b>4448</b>	<b>188</b>	<b>500</b>	<b>90</b>	<b>1:09</b>	<b>1:49</b>
2005-06	District (now Central) Jail, Motihari	367	1880	512	50	29	1:38	1:65
2006-07	District (now Central) Jail, Motihari	367	1690	460	50	31	1:34	1:55
2007-08	District (now Central) Jail, Motihari	367	1437	392	103	29	1:14	1:50
2008-09	District (now Central) Jail, Motihari	1423	1231	87	103	29	1:12	1:42

Year	Name of Jail	Fixed capacity	Occupancy	Percentage occupancy	Number of warders		Ratio	
					sanctioned	posted	6/4	7/4
1	2	3	4	5	6	7	8	9
2009-10	District (now Central) Jail, Motihari	1423	1179	83	103	24	1:11	1:50
<b>2005-10</b>	<b>District (now Central) Jail, Motihari</b>	<b>3947</b>	<b>7417</b>	<b>188</b>	<b>409</b>	<b>142</b>	<b>1:18</b>	<b>1:52</b>
2005-06	District Jail, Nawada	218	879	403	23	23	1:38	1:38
2006-07	District Jail, Nawada	218	866	397	23	23	1:38	1:38
2007-08	District Jail, Nawada	218	857	393	23	23	1:37	1:37
2008-09	District Jail, Nawada	218	716	328	26	26	1:28	1:28
2009-10	District Jail, Nawada	218	517	237	26	26	1:20	1:20
<b>2005-10</b>	<b>District Jail, Nawada</b>	<b>1090</b>	<b>3835</b>	<b>352</b>	<b>121</b>	<b>121</b>	<b>1:31</b>	<b>1:31</b>
2005-06	District (now Central) Jail, Purnea	412	1105	268	74	32	1:15	1:35
2006-07	District (now Central) Jail, Purnea	412	1359	330	74	40	1:18	1:34
2007-08	District (now Central) Jail, Purnea	412	1082	263	100	24	1:11	1:45
2008-09	District (now Central) Jail, Purnea	412	981	238	100	23	1:10	1:43
2009-10	District (now Central) Jail, Purnea	412	1061	258	100	23	1:11	1:46
<b>2005-10</b>	<b>District (now Central) Jail, Purnea</b>	<b>2060</b>	<b>5588</b>	<b>271</b>	<b>448</b>	<b>142</b>	<b>1:12</b>	<b>1:39</b>
2005-06	Sub Jail, Bikramganj	NA	NA	NA	NA	NA	NA	NA
2006-07	Sub Jail, Bikramganj	175	282	161	35	07	1:8	1:40
2007-08	Sub Jail, Bikramganj	307	224	73	35	07	1:6	1:32
2008-09	Sub Jail, Bikramganj	307	190	62	35	07	1:5	1:27
2009-10	Sub Jail, Bikramganj	307	181	59	35	07	1:5	1:26
<b>2005-10</b>	<b>Sub Jail, Bikramganj</b>	<b>1096</b>	<b>877</b>	<b>80</b>	<b>140</b>	<b>28</b>	<b>1:6</b>	<b>1:31</b>
2005-06	Sub Jail, Jhanjharpur	120	329	274	38	09	1:9	1:37
2006-07	Sub Jail, Jhanjharpur	120	300	250	38	09	1:8	1:33
2007-08	Sub Jail, Jhanjharpur	120	240	200	38	09	1:6	1:27
2008-09	Sub Jail, Jhanjharpur	120	214	178	38	09	1:6	1:24
2009-10	Sub Jail, Jhanjharpur	120	226	188	38	09	1:6	1:25
<b>2005-10</b>	<b>Sub Jail, Jhanjharpur</b>	<b>600</b>	<b>1309</b>	<b>218</b>	<b>190</b>	<b>45</b>	<b>1:7</b>	<b>1:8</b>
	<b>Grand Total</b>	<b>74235</b>	<b>87056</b>	<b>117</b>	<b>8324</b>		<b>1:10</b>	

**APPENDIX - 1.3.3**  
(Refer: Paragraph 1.3.8.2; Page - 42)

**Non-installation of hand held metal detectors (HHMD) and walkie-talkies**

(₹ in lakh)

Sl. No.	Name of jail	HHMD		Walkie-talkie	
		Number	Amount	Number	Amount
1	CJ, Buxar	02	0.27	10	1.11
2	CJ, Muzaffarpur	02	0.27	10	1.11
3	CJ, Gaya	02	0.27	10	1.11
4	CJ, Bhagalpur	02	0.27	10	1.11
5	CJ, Beur, Patna	02	0.27	10	1.11
6	Spl. CJ, Bhagalpur	02	0.27	10	1.11
7	DJ, Bihar Sharif	-	-	05	0.56
8	DJ, Jahanabad	-	-	05	0.56
9	DJ, Ara	-	-	05	0.56
10	DJ, Aurangabad	-	-	05	0.56
11	DJ, Begusarai	-	-	05	0.56
12	DJ, Bettia	-	-	05	0.56
13	DJ, Chhapra	-	-	05	0.56
14	DJ, Darbhanga	-	-	05	0.56
15	DJ, Gopalganj	-	-	05	0.56
16	DJ, Hajipur	-	-	05	0.56
17	DJ, Katihar	-	-	05	0.56
18	DJ, Khagaria	-	-	05	0.56
19	DJ, Madhepura	-	-	05	0.56
20	DJ, Madhubani	-	-	05	0.56
21	DJ, Motihari	-	-	05	0.56
22	DJ, Munger	-	-	05	0.56
23	DJ, Nawada	-	-	05	0.56
24	DJ, Phulwari Sharif	-	-	05	0.56
25	DJ, Purnea	-	-	05	0.56
26	DJ, Saharsa	-	-	05	0.56
27	DJ, Samastipur	-	-	05	0.56
28	DJ, Sasaram	-	-	05	0.56
29	DJ, Sitamarhi	-	-	05	0.56
30	DJ, Siwan	-	-	05	0.56
31	DJ, Banka	-	-	05	0.56
32	DJ, Bhabhua	-	-	05	0.56
33	DJ, Jamui	-	-	05	0.56
34	DJ, Lakhsarai	-	-	05	0.56
35	DJ, Sheikhpura	-	-	05	0.56
36	DJ, Araria	-	-	05	0.56
37	DJ, Kishanganj	-	-	05	0.56
38	DJ, Supaul	-	-	10	1.11
<b>Total</b>		<b>12</b>	<b>1.62</b>	<b>225</b>	<b>25.13</b>

**APPENDIX – 1.3.4**  
(Refer: Paragraph 1.3.8.3; Page - 43)

**Statement showing discrepancies in the maintenance of Gate Register**

Name of Jail	No serial	Existence of blank space	Correction in serial number
CJ, Bhagalpur,	18.09.05 to 01.01.06, 07.10.06, 04.11.06, 01.12.06	07.10.06	
CJ, Bhagalpur Special,	27.1.06, 28.01.06, 10.02.06, 11.02.06, 21.02.06, 03.03.06, 18.03.06, 12.04.06, 19.04.06 to 21.04.06, 05.06.06, 08.06.06.	27.1.06,28.01.06, 10.02.06, 11.02.06, 21.2.06, 03.03.06, 18.3.06, 12.04.06, 19.04.06 to 21.4.06, 22.4.06, 7.6.06, 8.6.06, 17.10.06, 20.10.06, 22.10.06, 24.10.06 to11.11.06, 13.11.06 to 24.11.06, 21.2.07, 10.05.07 to 13.05.07, 23.05.07, 24.05.07, 1.2.09 to 7.2.09, 11.2.09 to 15.2.09 17.2.09 to 28.2.09, 28.2.10, 2.3.10 to 9.3.10	
CJ, Buxar,	30.01.06 to 01.02.06	after 17.01.06, 25.01.06, 31.01.06, 01.02.06, 10.02.06, 15.03.06, 25.03.06, 31.03.06	from 05.10.05 (16003) to 14.10.05 (16346), cutting in January 2006 from serial 891 to 899 (made to 901 to 909),
DJ, Purnea	05.02.06, 23.12.07, 24.12.07, 03.02.08, 04.02.08, 21.05.08 to 23.05.08, 26.05.08, 04.06.08, 05.06.08, 08.06.08, 09.06.08, 04.08.08 to 06.08.08, 01.11.08, 02.11.08, 07.01.09, 08.01.09, 12.01.09, 13.01.09, 11.02.09 to 13.02.09, 16.02.09 to 20.02.09, 27.05.09 to 29.05.09, 31.05.09, 01.06.09, 06.06.09, 08.06.09, 10.06.09 to 13.06.09, 15.06.09, 09.08.09, 10.08.09, 30.08.09 to 01.09.09, 24.09.09, 25.10.09, 26.10.09, 04.11.09, 03.12.09, 04.12.09	23.12.07, 20.05.08, 22.05.08, 26.05.08, 04.08.08, 06.08.08, 07.01.09, 04.02.09, 11.02.09, 18.02.09, 19.02.09, 31.05.09, 07.06.09, 08.06.09, 10.06.09, 11.06.09, 14.06.09, 01.07.09, 09.08.09, 10.08.09, 30.08.09, 31.08.09, 24.09.09, 25.10.09, 26.10.09, 03.12.09, 04.12.09,	

**APPENDIX- 1.3.5**  
(Refer: Paragraph 1.3.8.3; Page - 43)

**Statement showing recovery of prohibited items from jails**

Sl. No.	Name of Jail	Number of searches	Prohibited item recovered during the period 2007-10						
			Mobile set	Sim card	Mobile charger	Mobile battery	Knife	Ganja	Others
1	CJ, Bhagalpur Special	01	-	-	-	-	06	200 gm	2 Solding iron, 3 electric iron, Gutkha 300 pouch, 5 Ganga Chilam
2	CJ, Beur. Patna	52	70	07	44	12	-	2.395 Kg & 403 pouch.	Match box, electric wire, TV, one DVD player, 62 CDs. 16 packet cigarette, gas regulator, gutkha, 15 rope and heater
3	CJ, Bhagalpur	04	-	-	-	01	-	-	Bhang three pouch, one diary and walkman
4	CJ, Buxar	01	01	-	01	-	-	-	-
5	CJ, Gaya	03	01	-	01	-	-	150 gm	Four chulha, Khaini. Biri. cigarette, sattu and fruit
6	DJ, Ara	04	09	03	05	-	-	-	One stove, 10 litter kerosene oil
7	DJ, Araria	02	03	01	01	-	01	-	2 Electric iron, diary
8	DJ, Aurangabad	03	06	-	05	-	-	2 kg & 03 pouch	₹ 19825, four diaries
9	DJ, Banka	01	-	-	-	-	-	05 pouch	-
10	DJ, Begusarai	01	03	03	03	-	-	-	-
11	DJ, Bettiah	02	08	13	03	-	01	-	-
12	DJ, Bihar Sharif	15	28	09	07	05	08	One pouch	Three ganja chilam, 6 scissors, Chilam & Khaini, 1 razor
13	DJ, Chhapra	04	20	-	18	-	-	-	16 stove, one radio, two electric iron, 45 litter kerosene oil, ₹1305, one transister
14	DJ, Darbhanga	01	-	-	-	-	-	-	₹ 4320 & four packet cigarrate



Sl. No.	Name of Jail	Number of searches	Prohibited item recovered during the period 2007-10						
			Mobile set	Sim card	Mobile charger	Mobile battery	Knife	Ganja	Others
15	DJ, Gopalganj	06	20	01	36	01	01	10 pouch	Two electric iron, wine, 16 CDs, one CD player, gutkha & panmasala
16	DJ, Hajipur	03	01	2	01	-	01	-	₹ 39171, wine bottle, CDs, dekchi, jug, diary & handpump handle
17	DJ, Jahanabad	03	11	-	04	01	-	-	₹ 2600
18	DJ, Jamui	03	03	-	01	-	-	Two pouch	
19	DJ, Khagaria	03	09	-	02	-	01	5 gm	Three diaries, one packet cigarette, one match box, 20 pouch gutkha, one blade
20	DJ, Kishanganj	01	-	-	-	-	02	-	One nail cutter
21	DJ, Lakhisharai	03	13	12	10	-	-	-	Khaini
22	DJ, Madhepura	28	34	11	06	02	-	10 pouch	Five diaries and one ganja chilam
23	DJ, Madhubani	03	01	-	01	-	01	-	One sarauta, one chilam
24	DJ, Motihari	06	16	08	05	-	-	150 gm	One pistol
25	DJ, Mughher	03	02	02	01	-	-	-	One radio, one speaker, ₹3000, wire 3 mtr
26	DJ, Nawada	05	04	-	02	-	01	-	₹ 14500, one spoon, one hammer, one chilam, one khurpi
27	DJ, Purnea	01	01	01	-	-	-	-	-
28	DJ, Sasaram	04	07	04	05	02	-	-	-

Sl. No.	Name of Jail	Number of searches	Prohibited item recovered during the period 2007-10						
			Mobile set	Sim card	Mobile charger	Mobile battery	Knife	Ganja	Others
29	DJ, Sheikhpura	01	-	-	-	-	-	-	100g Khaini, 14 pc cigarette, four match box, one chheni, one tin pulse, red chilli powder 200 gm. Flour 3500 kg, garam masala one pouch, Zeera 50 gm., four Chilam, One ganja cutter, 35 no. wire 50 gm., multi channel TV, heater coil & wire, wire two feet
30	DJ, Sitamarhi	03	13	03	09	09	-	-	Iron rods
31	DJ, Siwan	04	48	47	26	44	09	-	₹ 13000, 15 diaries, seven perfume bottle, one fan, one head phone
32	SJ, Barh	03	03	01	02	-	-	-	One diary
33	SJ, Jhanjharpur	01	01	-	01	01	-	-	One diary
34	SJ, Patna City	02	-	01	04	-	-	-	One fire goli
	<b>Total</b>	<b>180</b>	<b>336</b>	<b>129</b>	<b>204</b>	<b>78</b>	<b>32</b>	<b>4.900 kg &amp; 434 pouch</b>	

**APPENDIX – 1.3.6**  
(Refer: Paragraph 1.3.8.6; Page - 45)

**Statement showing pending reports on custodial deaths**

Name of Jail	Number of Custodial deaths						Number of Magisterial reports pending					
	2005 -06	2006 -07	2007 -08	2008 -09	2009 -10	Total	2005 -06	2006 -07	2007 -08	2008 -09	2009 -10	Total
Central Jail, Beur, Patna	20	21	12	11	11	75	Nil	Nil	Nil	02	03	05
Central Jail, Bhagalpur	10	10	09	06	07	42	Nil	Nil	Nil	Nil	01	01
Central Jail, Bhagalpur Special	04	03	25	07	11	50	Nil	Nil	02	Nil	01	03
Central Jail, Buxar	17	12	15	10	07	61	Nil	Nil	Nil	Nil	Nil	Nil
Central Jail, Gaya	13	20	20	11	09	73	Nil	Nil	Nil	Nil	Nil	Nil
Central Jail, Muzaffarpur	14	15	10	14	17	70	Nil	Nil	Nil	Nil	Nil	Nil
District Jail, Ara	09	04	06	06	07	32	Nil	Nil	Nil	Nil	05	05
District Jail, Begusarai	07	04	11	04	03	29	Nil	Nil	Nil	Nil	Nil	Nil
District Jail, Bhagalpur Women	01	Nil	Nil	Nil	Nil	01	Nil	Nil	Nil	Nil	Nil	Nil
District Jail, Biharsharif	09	05	04	03	02	23	Nil	Nil	Nil	Nil	02	02
District (now Central) Jail, Motihari	04	07	05	01	04	21	Nil	01	02	Nil	01	04
District Jail, Nawada	01	04	02	01	Nil	08	01	04	02	01	Nil	08
District (now Central) Jail, Purnea	01	05	05	10	Nil	21	NA	NA	NA	NA	NA	NA
Sub Jail, Bikramganj	06	02	Nil	Nil	Nil	08	Nil	Nil	Nil	Nil	Nil	Nil
Sub Jail, Jhanjharpur	04	Nil	Nil	Nil	Nil	04	Nil	Nil	Nil	Nil	Nil	Nil
<b>Total</b>	<b>120</b>	<b>112</b>	<b>124</b>	<b>84</b>	<b>78</b>	<b>518</b>	<b>01</b>	<b>05</b>	<b>06</b>	<b>03</b>	<b>13</b>	<b>28</b>

**APPENDIX- 1.3.7**  
(Refer: Paragraph 1.3.9.1; page - 46)

**Statement showing prisoners occupancy during 2005-10**

S. N.	Name of jail	Capacity as on 31.12.05	Capacity as on 31.12.09	Percent age Occupancy 31.12.05	Percent age Occupancy 31.12.06	Percent age Occupancy 31.12.07	Percent age Occupancy 31.12.08	Percent age Occupancy 31.12.09
1	D.J. Bhabua	85	85	604 (SJ)	539 (SJ)	572	521	464
2	D.J. Nawada	348	218	207	253	338	393	405
3	D.J. Madhepura	99	99	672	100	476	501	393
4	D.J. Jahanabad	140	140	431 (SJ)	566 (SJ)	558	574	389
5	D.J. Khagaria	163	183	429	454	186	389	384
6	D.J. Supaul	138	138	435 (SJ)	329 (SJ)	322	383	358
7	D.J. Araria	162	162	342 (SJ)	308 (SJ)	300	345	310
8	SJ Barh	67	167	778	346	356	344	272
9	D.J. Jamui	158	188	414 (SJ)	400 (SJ)	379	313	228
10	SJ Hilsa	210	210	300	215	302	238	222
11	D.J. Sitamarhi	286	286	315	267	237	217	214
12	SJ Jhanjharpur	120	120	294	203	218	157	211
13	D.J. Purnea	412	412	316	291	250	280	175
14	D.J. Ara	400	664	298	374	137	187	175
15	D.J. Aurangabad	210	309	296	354	220	189	161
16	SJ Buxar	53	69	206	180	250	211	159
17	D.J. Biharsharif	435	435	200	249	191	197	145
18	D.J. Betia	225	623	558	712	222	176	143
19	D.J. Chapra	542	674	255	233	181	125	142
20	D.J. Begusarai	410	957	386	165	128	139	137
21	SJ Danapur	37	87	714	386	209	349	121
22	D.J. Sheikhpura	156	155	155 (SJ)	203 (SJ)	69	131	121
23	Model CJ, Beur, Patna	1708	2360	180	165	109	115	117
24	Sub. Jail Navgachia	NA	220	Nil	Nil	84	143	116
25	D.J. Kishanganj	214	221	194 (SJ)	168 (SJ)	137	157	115
26	D.J. Munger	453	482	176	144	111	128	113
27	W.D.J. Bhagalpur	83	83	117	106	130	114	112
28	CJ, Gaya	1032	1478	243	249	152	133	111
29	D.J. Gopalganj	55	550	1433	1131	924	107	106
30	D.J. Saharsa	425	557	160	134	123	80	103
31	D.J. Samastipur	210	576	532	333	147	95	100
32	D.J. Lakhisarai	257	419	279 (SJ)	154 (SJ)	105	75	98
33	D.J. Hajipur	225	753	621	229	147	131	93
34	D.J. Madhubani	250	621	350	225	112	78	93
35	S.K.R.B., C.JI, Muzaffarpur	1211	2135	240	199	161	107	92
36	Sub. Jail Masaurhi	193	193	134	134	109	87	92
37	D.J. Siwan	410	684	194 (SJ)	99	84	79	91
38	Sub. Jail Patnacity	35	193	603	746	627	419	87
39	Central Jail, Buxar	994	1126	146	153	88	90	83
40	D.J. Motihari	367	1423	512	460	122	87	83
41	Camp DJ, Phulwarisharif	600	700	165	151	95	67	83
42	D.J. Sasaram	610	970	205	180	148	85	82
43	D.J. Banka	103	732	919 (SJ)	357 (SJ)	106	103	82
44	SJ Bagaha	225	481	183	264	103	56	78
45	D.J. Katihar	463	779	214	149	95	96	76
46	SJ Rosera	100	232	316	297	88	205	66
47	CJ, Bhagalpur	1982	1962	83	80	70	72	66
48	D.J. Darbhanga	383	665	136	149	157	91	63
49	SJ Sherghati	250	250	96	99	137	114	62
50	SJ Bikramganj	225	307	129	117	65	65	59
51	SJ Benipur	215	215	64	47	72	61	53
52	Spl. CJ, Bhagalpur	3228	3288	49	45	63	58	47
53	SJ Dalsingarai	165	164	81	119	79	79	46
54	SJ Daudnagar	NA	560	NA	NA	NA	25	27

**APPENDIX – 1.3.8***(Refer: Paragraph 1.3.12.1; Page - 52)***Statement showing shortages in the manufacturing department and in dead stock**

Sl No	Name of article	CB of old Stock	OB of stock register opened on 01.09.06	Shortage	Rate (₹)	Amount (₹)
1	2	3	4	5 = 4-3	6	7= 5X6
1	Woolen grey yarn	5555 Kg	3755 Kg	1800 Kg	18.60 per Kg	33480
2	Aluminium thali	1500	NIL	1500	134 per Pc.	201000
3	Aluminium glass	779	NIL	779	134 per Pc.	104386
4	Jute mat	3308	1550	1758	72 per Pc.	126576
5	Crosit oil	3225 Kg	2000 Kg	1225 Kg	20 per Kg	24500
6	Rosin	2103.30 Kg	1377.00 Kg	726.30 Kg	59 per Kg	42852
7	Soap stone powder	9110.75 Kg	2500 Kg	6610.75 Kg	4.50 per Kg	29748
8	Sodium silicate	1837.75 Kg	1200 Kg	637.75 Kg	6.90 per Kg	4400
9	Red blanket	972	963	09	273 per Pc.	2457
10	Iron rod	200 Kg	62 Kg	138 Kg	21 per Kg	2898
11	Iron sheet 16 gauze	148 Kg	54 Kg	94 Kg	31.12 per Kg	2925
	<b>Total</b>					<b>575222</b>

**Dead stocks**

Sl No	Name of article	CB of old Stock	OB of stock register opened on 01.09.06	Shortage	Rate (₹)	Amount (₹)
1	2	3	4	5 = 4-3	6	7= 5X6
1	Drill Beat	6 Pcs	2 Pcs	4 Pcs	670 Pcs	2680
2	Wire Hildframe complete	22 Pcs	-	22 Pcs	1950 Pcs	42900
3	Liver Tension	17 Pcs	11 Pcs	6 Pcs	375 Pcs	2250
4	Take up Wheel Bracket	18 Pcs	-	18 Pcs	190 Pcs	3420
5	Plastic Pinker	66 Pcs	6 Pcs	60 Pcs	160 Pcs	9600
6	Nut Bolt	5 Kg	2 Kg	6 Kg/36 Pcs	10 Pcs	360
7	Picking Plate books RH/ LH	12 Pcs	-	12 Pcs	275 Pcs	3300
8	Iron Churna	72.500 Kg	22.500	50 Kg	8 Kg	400
9	Fast Pullifar Blamet Frame	12 Pcs	-	12 Pcs	1650 Pcs	19800
	<b>Total</b>					<b>84710</b>

**APPENDIX – 1.3.9**

**(Refer: Paragraph 1.3.12.2; Page - 53)**

**Statement showing non-disposal of scrap**

Sl. No	Name of Jail	Name of items	Quantity (in Kgs)	Rate (₹)*	Amount (₹)
1	Central Jail, Bhagalpur	Aluminum Scrap (cutting)	1341.50	57.50	77136
2	Central Jail, Bhagalpur	Condemned Aluminum	1170.55	65	76086
3	Central Jail, Bhagalpur	Scrap of Woolen yarn	56875	12	682500
4	Central Jail, Bhagalpur	Scrap and condemned Iron and GI sheet 24 gauze	17653	10	176530
5	Central Jail, Bhagalpur	Condemned Iron drum	57 nos.	70	3990
6	Central Jail, Bhagalpur	Tailor cutting/condemned cotton yarn	1207	8.30	10018
	<b>Total 1</b>				<b>1026260</b>
7	Central Jail, Buxar	Scrap of Woolen yarn	953	12	11436
8	Central Jail, Buxar	Scrap and condemned Iron and GI sheet 24 gauze	1674	10	16740
	<b>Total 2</b>				<b>28176</b>
	<b>Grand Total</b>				<b>1054436</b>

\* Rates are based on approved rates (2006-07) of Central Jail, Bhagalpur except for S.No. 7 for which Rate is based on approved rate of 2001 of the same Jail.

**ANNEXURE – 1.3.10**  
(Refer: Paragraph 1.3.12.3; Page - 53)

**Statement showing Idle machines**

<b>Carding section (Osaka Kiko Co. Ltd 1949)</b>		
<b>Sl. No</b>	<b>Name of machine</b>	<b>Number</b>
1	Carding machine	21
2	Blow machine	04
3	Card pressure top flat machine	01
4	Top flat finishing machine	01
5	Robin cutter machine	01
<b>Spinning section (Osaka Kiko Co. Ltd 1949)</b>		
1	Spinning machine	13
2	Doubling machine	01
3	Chesses machine	01
4	Riling machine	16
5	Rotocon machine	01
6	Inter machine	04
7	Salving machine	02
8	Draying machine	12

**APPENDIX 1.3.11**

(Refer: Paragraph 1.3.13.1; Page - 53)

**Statement of inspections conducted by IGP during 2005-10**

Name of Jail	Required Number of inspections	Inspections done	Remarks
CJ, Beur, Patna	10	01 (2009-10)	there was no entry in visitor's minute book
CJ, Bhagalpur	10	01 (2006-07)	there was no entry in visitor's minute book
CJ, Bhagalpur Special	10	NIL	
CJ, Buxar	10	NIL	
CJ, Gaya	10	01 (2009-10)	there was no entry in visitor's minute book
CJ, Muzaffarpur	10	02 (2008-09)	there was no entry in visitor's minute book
DJ, Ara	05	NIL	
DJ, Begusarai	05	NIL	
DJ, Bhagalpur Women	05	NIL	
DJ, Biharsarif	05	01 (2009-10)	there was no entry in visitor's minute book
DJ, Motihari	05	01 (2008-09)	there was no entry in visitor's minute book
DJ, Nawada	05	NIL	
DJ, Purnea	05	NA	
SJ, Bikramganj	03	NIL	
SJ, Jhanjharpur	03	NIL	
<b>Total</b>	<b>101</b>	<b>07</b>	



**APPENDIX 1.3.12***(Refer: Paragraph 1.3.13.1; Page - 53)***Statement of inspections conducted by DM during 2005-10**

Name of Jail	Required Number of Inspections	Inspections done by DM	Remarks
CJ, Beur, Patna	60	NIL	
CJ, Bhagalpur	60	01(2009-10)	There was no entry in the visitor's book
CJ, Bhagalpur Special	60	NIL	
CJ, Buxar	60	01(2005-06), 01(2006-07) and 01 (2007-08)	There was no entry in the visitor's book
CJ, Gaya	60	01(2007-08)	There was no entry in the visitor's book
CJ, Muzaffarpur	60	02(2005-06), 01(2009-10)	There was no entry in the visitor's book
DJ, Ara	60	NIL	
DJ, Begusarai	60	NIL	
DJ, Bhagalpur Women	60	NIL	
DJ, Biharsarif	60	01(2009-10)	There was no entry in the visitor's book
DJ, Motihari	60	01(2005-06)	There was no entry in the visitor's book
DJ, Nawada	60	01(2009-10)	There was no entry in the visitor's book
DJ, Purnea	60	NA	
SJ, Bikramganj	05	01(2005-06)	
SJ, Jhanjharpur	05	NIL	
<b>Total</b>	<b>790</b>	<b>12</b>	

**APPENDIX – 2.1**  
(Refer: Paragraph 2.2.1; Page - 73)

**Statement showing names of works and excess payment due to price escalation**

The price adjustment for increase or decrease in the cost of bitumen shall be paid in accordance with the following formula:-

$$V_b = 0.85 \times P_b / 100 \times R \times (B_1 - B_0) / B_0$$

$V_b$  = Increase or decrease in the cost of work during the month under consideration due to change in rates for bitumen.

$B_0$  = The official retail price of bitumen at the IOC depot at nearest centre on the day 28 days prior to date of opening of Bids.

$B_1$  = The official retail price of bitumen of IOC depot at nearest centre for the 15th day of the month under consideration.

$P_b$  = Percentage of bitumen component of the work.

$R$  = Total value of work.

Sl. No.	Name of work	Quantity of emulsion/ bitumen consumed in work (in MT)	Rate of bitumen/ emulsion (as per SOR) (in ₹)	Pb on which payment was made	Pb on which payment was to be made	Paid escalation (in ₹)	Payable escalation (in ₹)	Difference (in ₹)
(1)	W/s of Khaira-Sattarghat road 10 SBD/2007-08	Eml. - 53.448 Bit. - 508.783	19937.25 25857.51	22.70	12.01	5870187	3105569	2764618
(2)	Manpur-Garkha Road 26 SBD/07-08	Eml. - 30.63 Bit. - 273.79	25154.85 19195.90	17.89	14.78	3002997	2688631	314366
(3)	Balance work of Chapra-Marhaura Road 3 SBD/2008-09	Bit. - 637.787	33716.13	41.26	36.07	1642616	1435725	206891
(4)	Shitalpur-Parsa-Sonho Road 11 F2/2006-07	Bit. - 976.655	19082.30	27.50	24.03	11192880	9541701	1651179
(5)	Chapra-Manjhi-Darauli-Guthani road (31.40 to 86 km) (SBD-18/06-07) (Pkg. Prog. No.- BR/NBW/MDR/02/06-07)	Bit. - 2794.77	25857.50	28.25	23.35	11382102	9465185	1916917
(6)	Imp. of Siwan-Pagambarpur road (0 to 26.33 km) (SBD-18/06-07) (Pkg. Prog. No.- BR/NBW/MDR/02/06-07)	Bit. - 986.60	25857.50	25.73	21.21	7733506	6089360	1644146
(7)	Chainwa-Chainpur road (6.5 km to 10 km) (SBD-18/06-07) (Pkg. Prog. No.- BR/NBW/MDR/02/06-07)	Bit. - 184.71	25857.50	27.51	22.73	706977	571356	135618
(8)	Panchrukhi-Hariharpur-Lalganj road (9F2/06-07)	Bit. - 603.35	23728.85	25.85	21.61	4039996	3377222	662774
	<b>Total</b>							<b>9296509</b>

**APPENDIX – 2.2**  
(Refer: Paragraph 2.2.3; Page - 75)

***Statement showing delays at various stages of flood protection***

Sl. No	Events	Stipulated date as per Flood Calendar 2007-08	Actual date of execution	Delay (in days)
1	Inspection of site and reporting by High level Committee	10-31 October	13.10.2007 to 14.10.2007	
2	Meeting of TAC and its recommendation/ reporting	5-16 November	26.10.2007	
3	Submission of plan before SRC in light of recommendation by TAC	19-27 November		
4	Meeting of SRC and recommendation/reporting	29 November to 5 December	25.01.2008	
5	Meeting of Bihar State Flood Control Board	24 December		
6	Date of approval of execution of work (Go-ahead)	27 December		
7	Date of technical sanction of estimate	30 December	21.02.2008	52 Days
8	Date of NIT	31 December	20.12.2007	
9	Date of tender	up to 25th January	22.01.2008	
10	Date of finalization of tender	up to 31st January	22.02.2008	22 Days
11	Date of allotment of work	1st February	26.02.2008	26 Days
12	Actual date of start of work	2nd February	29.02.2008	27 Days
13	Date of completion of work	31st May		

**APPENDIX – 2.3**  
**(Refer: Paragraph 2.2.6; Page - 79)**

**Statement showing amounts paid to employees/teachers**

<b>Sl. No.</b>	<b>Period</b>	<b>Amount release/paid (in ₹)</b>
1	July 2005 to February 2006	2,49,49,484.00
2	March 2006	34,20,979.00
3	April 2006	34,20,979.00
4	May 2006	36,58,437.00
5	June 2006 to August 2006	1,09,89,438.00
6	September 2006 to 15th October 2006	51,35,276.00
7	Adhoc one month (Paid on 23.10.2008)	41,62,038.00
8	Adhoc one month (Paid on 13.01.2009)	38,67,896.00
9	Adhoc one month (Paid on 07.03.2009)	41,39,557.00
10	Adhoc one month (Paid on 05.06.2009)	18,65,000.00
11	Adhoc one month (Paid on 25.02.2010 and 30.03.2010)	19,02,500.00
	<b>Total</b>	<b>6,75,11,584.00</b>

**APPENDIX – 2.4**  
(Refer: Paragraph 2.3.2; Page - 81)

*Statement showing expenditure incurred on the same stretches of roads  
from State and Central funds within the defect liability period*

**State funds (2006-07)**

(₹ in crore)

Sl No	Agr. No.	Name of work	Agr. Value	Completion date	Payment made upto	Final/ Last payment	Voucher No and date	Defect liability period	Security refunded/ lapsed before the defect liability period
1	19F2/06-07	IRQP in k.m. 41 to 44 of NH-80	1.39	11.03.09	13th and Final	1.35	Vr. No. 33 dt 30.03.09	10.03.2012	0.04
2	23F2/06-07	PR in k.m. 45 to 54 of NH-80	1.63	14.01.09	6th and Final	1.61	Vr. No. 01 dt 06.02.09	13.01.2011	0.08
3	24F2/06-07	IRQP in k.m. 1(P) to 11 of NH-80	1.99	07.01.08	8th and Final	1.98	Vr. No. 02 dt 03.03.08	06.01.2011	0.10
4	25F2/06-07	IRQP in k.m. 12 to 17 of NH-80	2.16	10.01.09	12th and Final	1.58	Vr. No. 21 dt 30.03.09	09.01.2012	0.16
<b>Total</b>			<b>7.17</b>			<b>6.52</b>			<b>0.38</b>

**Central funds (2008-09 and 2009-10)**

(₹ in crore)

Sl. No.	Agr. No./ Year	Name of work	Agr. Value	Date of Agreement	Payment made	
					Upto Running Account bill & date	Amount
1	SBD.- 19/08-09	IRQP Work in KM 41 to 54 of NH-80	4.95	23.03.09	7 <sup>th</sup> dt. 10.11.2009	4.68
2	SBD.- 02/09-10	IRQP Work in KM 0 to 14 of NH-80	5.39	23.07.09	8 <sup>th</sup> dt. 29.03.2010.	5.00
3	SBD.- 01/09-10	IRQP Work in KM 15 to 28 of NH-80	5.10	27.04.09	11 <sup>th</sup> dt. 29.03.2010	0.95*
<b>Total</b>			<b>15.44</b>			<b>10.63</b>

\* Proportionate payment amount arrived at for first three kilometers i.e. 15 to 17 km = (₹ 4,44,48,755/14 km) × 3 km = ₹ 95,24,733 or ₹ 0.95 crore

**APPENDIX-2.5**  
**(Refer: Paragraph – 2.5.1.; Page - 86)**  
**Detail of outstanding Inspection Reports/ Paras**

Sl. No.	Name of Department	2003-2004		2004-2005		2005-2006		2006-2007		2007-2008		2008-2009		2009-10		Total	
		IR	Para	IR	Para	IR	Para	IR	Para	IR	Para	IR	Para	IR	Para	IR	Para
1.	Rural Development	211	2047	193	1489	238	1941	254	2026	203	1314	232	1575	225	1604	1556	11996
2.	Welfare	40	318	12	79	39	156	45	181	45	138	86	299	32	180	299	1351
3.	Finance	4	16	3	10	15	16	5	17	10	39	14	44	2	6	53	148
4.	Urban Development	15	76	1	5	0	0	3	14	39	98	5	10	0	0	63	203
5.	Labour Employment	41	123	1	1	0	0	0	0	10	22	0	0	3	10	55	156
6.	Planning and statistic	3	11	3	8	0	0	8	25	1	5	23	48	1	6	39	103
7.	Information and Broadcasting	8	28	1	1	2	8	5	15	1	2	5	10	0	0	22	64
8.	Panchayati Raj	38	95	12	35	0	0	1	6	12	35	0	0	0	0	63	171
9.	Health	3	5	41	250	95	249	51	185	98	415	68	124	131	470	487	1698
10.	Home	6	43	73	448	48	278	50	169	73	134	64	125	46	163	360	1360
11.	Land acquisition	43	135	8	24	28	32	24	47	15	56	57	78	9	26	184	398
12.	Human Resources	105	411	120	487	65	254	93	467	109	575	75	287	70	420	637	2901
13.	Agriculture	65	129	47	266	12	20	23	80	59	188	28	114	45	205	279	1002
14.	Industry	20	67	18	76	5	30	19	87	12	63	7	24	0	0	81	347
15.	Land Revenue	28	95	25	102	55	156	79	227	21	61	20	44	47	134	275	819
16.	Law	18	59	13	54	8	24	13	25	5	21	11	36	7	17	75	236
17.	Animal Husbandry	15	71	9	19	20	34	46	114	40	155	24	64	32	101	186	558
18.	Co-operative	2	3	19	40	5	12	37	151	14	43	11	30	7	16	95	295
19.	Excise	18	34	13	26	14	22	12	15	12	17	9	16	19	24	97	154
20.	Fishery	25	73	5	18	0	0	0	0	18	57	5	5	5	20	58	173
21.	Tourism	10	30	3	10	0	0	0	0	12	35	3	8	0	0	28	83
22.	DRDA, State Autonomous Body	47	256	49	387	31	257	36	169	108	608	123	597	61	313	455	2587
23.	Road Construction	18	86	59	348	25	94	40	249	21	131	56	316	45	288	264	1512
24.	Building Construction	17	54	22	130	28	169	37	258	31	177	48	371	43	259	226	1418

Sl. No.	Name of Department	2003-2004		2004-2005		2005-2006		2006-2007		2007-2008		2008-2009		2009-10		Total	
		IR	Para	IR	Para	IR	Para	IR	Para	IR	Para	IR	Para	IR	Para	IR	Para
25.	Public Health Engineering	19	155	9	40	10	72	35	185	19	68	53	317	45	244	190	1081
26.	Water Resources	76	628	48	368	36	192	58	483	48	282	104	548	97	549	467	3050
27.	Rural Works	21	87	76	452	27	125	40	200	37	265	55	419	71	433	327	1981
28.	National Highway	9	28	12	55	15	53	14	61	21	101	20	136	19	106	110	540
29.	Forest	16	76	11	28	19	30	16	105	11	65	22	160	17	77	112	541
30.	Minor Irrigation and Tube well	17	107	1	6	13	103	26	139	24	113	23	150	39	245	143	863
	<b>TOTAL</b>	<b>958</b>	<b>5346</b>	<b>907</b>	<b>5262</b>	<b>853</b>	<b>4327</b>	<b>1070</b>	<b>5700</b>	<b>1129</b>	<b>5283</b>	<b>1251</b>	<b>5955</b>	<b>1118</b>	<b>5916</b>	<b>7286</b>	<b>37789</b>

## APPENDIX- 2.6

(Refer: Paragraph – 2.5.2.; Page - 87)

### Department-wise details of non-submission of Action Taken Notes

Sl no.	Department	2000-01		2001-02		2002-03		2003-04		2004-05		2005-06		2006-07		2007-08		2008-09		Total		
		Review	Para	Review	Para	Review	Para	Review	Para	Review	Para	Review	Para	Review	Para	Review	Para	Review	Para	Review	Para	Review
1.	Health	0	0	0	0	0	0	1	0	0	1	1	0	0	0	0	0	0	1	2	3	3
2.	Human Resources	1	0	1	0	0	1	0	0	0	0	1	0	0	4	1	2	0	4	4	4	11
3.	Rural Development	0	0	0	0	0	2	0	1	1	4	0	1	1	4	1	5	1	4	4	4	21
4.	Agriculture	0	0	0	0	0	0	0	0	0	0	0	0	1	0	0	5	0	0	0	1	5
5.	Industry	0	0	0	0	0	0	0	0	0	0	0	1	0	0	0	0	0	0	0	0	1
6.	Energy	0	0	0	0	0	0	0	0	0	0	0	0	1	0	0	0	0	0	0	0	1
7.	Home	0	0	0	0	0	0	0	0	0	0	1	0	0	1	0	0	0	0	0	1	1
8.	Water Resources	0	0	0	0	0	1	0	0	0	0	0	6	0	4	1	4	0	3	1	1	18
9.	Minor Irrigation	0	0	0	0	0	0	0	0	0	0	0	1	1	0	0	0	0	0	0	1	1
10.	Building Construction	0	0	0	0	0	1	0	0	0	0	0	0	0	3	0	2	0	0	0	0	6
11.	Road Construction	0	1	0	0	0	0	0	0	0	0	0	1	1	1	0	2	0	1	1	1	6
12.	Public Health Engineering	1	0	0	0	0	0	0	0	0	0	0	0	0	0	0	0	0	0	0	1	0
13.	Revenue and Land Reforms	0	0	0	0	0	1	0	0	0	0	0	0	0	0	0	0	0	1	0	1	1
14.	Welfare	0	1	0	1	0	0	0	0	0	0	0	1	0	0	0	1	0	1	0	0	5
15.	Forest	0	0	0	1	0	0	0	0	0	0	1	0	0	2	0	0	0	1	1	1	4
16.	Animal Husbandry	0	0	0	0	0	0	0	0	0	0	0	0	0	2	0	0	0	0	0	0	2
17.	Local Body	1	3	0	2	0	0	0	0	0	0	0	0	0	0	0	0	0	0	0	1	5
18.	Urban Development	0	0	0	0	0	0	0	0	0	0	0	0	0	0	1	0	0	1	1	1	1
19.	Labour Employment and Training	0	0	0	0	0	1	0	0	0	0	0	0	0	1	0	0	0	0	0	0	2



Sl no.	Department	2000-01		2001-02		2002-03		2003-04		2004-05		2005-06		2006-07		2007-08		2008-09		Total		
		Review	Para	Review	Para	Review	Para	Review	Para	Review	Para	Review	Para	Review	Para	Review	Para	Review	Para	Review	Para	
20.	Vidhan Mandal	0	0	0	0	0	0	0	0	0	0	0	0	1	0	0	0	0	0	0	1	
21.	Cabinet Secretariat	0	0	0	0	0	0	0	0	0	0	1	0	0	0	0	0	0	0	0	1	0
22.	Commercial Authority	0	2	0	1	0	0	0	0	0	0	0	0	0	0	0	0	0	0	0	0	3
23.	Law	0	0	0	0	0	0	0	2	0	0	0	0	0	0	0	0	0	0	0	0	2
24.	Disaster Management	0	0	0	0	0	0	0	0	0	2	0	0	0	0	0	0	0	1	0	1	2
25.	Planning & Dev.	0	0	0	0	0	0	0	0	0	0	0	0	0	0	0	0	0	0	0	0	0
	<b>Total</b>	<b>3</b>	<b>7</b>	<b>1</b>	<b>5</b>	<b>00</b>	<b>07</b>	<b>1</b>	<b>03</b>	<b>01</b>	<b>7</b>	<b>05</b>	<b>11</b>	<b>04</b>	<b>24</b>	<b>04</b>	<b>21</b>	<b>5</b>	<b>17</b>	<b>24</b>	<b>102</b>	

**APPENDIX- 2.7**

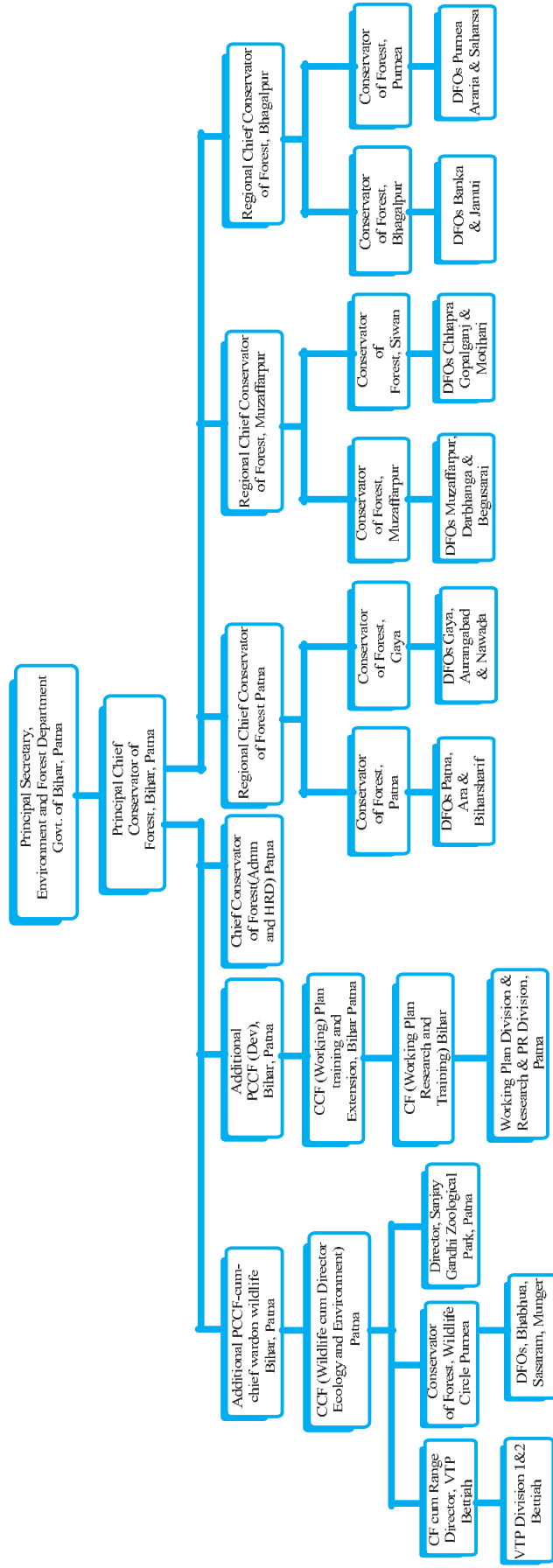
*(Refer: Paragraph – 2.5.3.; Page -87)*

**Status of Action Taken Notes on the recommendation of the PAC**

Sl. No.	Name of Department	P.A.C. Report No.	Number of Paras on which ATNs by department not furnished
1.	Rural Development Department	326*, 357, 446	32
2.	Rural Engineering Organisation	414, 473	14
3.	Road Construction Department	347, 369, 370, 430, 471	41
4.	Labour & Employment Department	388	01
5.	Science & Technology	396	03
6.	Urban Development Department	406, 447	08
7.	Public Health Engineering Department	348, 426, 453	12
8.	Finance Department	386, 461	05
9.	Health Department	335, 399, 464	54
10.	Panchayati Raj Department	451	02
11.	Energy Department	349	02
12.	Environment Department	384	01
13.	Home Department	334, 397, 419	12
14.	Agriculture Department	346, 421, 422, 469	16
15.	Co-operative Department	351, 428, 465	07
16.	Human Resources Development Department	358, 359, 379, 389, 390, 394, 395, 411, 417, 420, 455, 456, 457, 470	73
17.	Animal Husbandry Department	415, 445	18
18.	Relief & Rehabilitation	398, 400	09
19.	Water Resources Department	323, 367, 368, 374, 377, 378, 474	17
20.	Minor Irrigation Department	352, 416, 450	16
21.	Welfare Department	387, 397	07
22.	Planning & Development Department	466	02
23.	Revenue & Land Reforms Department	454, 463, 467, 472	06
24.	Personnel Department	459	01
25.	Cabinet Secretariat Department	460	01
26.	Food, Civil Supplies & Commerce Department	391, 448	04
27.	Institutional Finance & Programme Implementation Department	392	06
28.	Industry Department	438	08
29.	Building Construction Department	429	11
30.	Civil Aviation Department	425	04
		<b>Total</b>	<b>393</b>

\* 326- 08.11.2000 (Laid on 08.11.2000 in Bihar Vidhan Sabha).

**APPENDIX- 3.1**  
*(Refer: Paragraph 3.2 ; Page - 91)*  
**Organisational set-up**



## APPENDIX- 3.2

(Refer: Paragraph 3.8.2; Page - 95)

### Funds allotted and expenditure incurred in the test-checked divisions

(₹ in crore)

Name of division	Year	Allotment			Expenditure			Savings
		Non-plan	Plan	Total	Non-plan	Plan	Total	Total
Aurangabad	2005-06	0.86	0.27	1.13	0.86	0.27	1.12	0.01
	2006-07	0.78	1.07	1.85	0.76	1.07	1.83	0.02
	2007-08	1.24	1.69	2.93	1.20	1.64	2.84	0.09
	2008-09	1.31	1.27	2.58	1.29	1.18	2.47	0.11
	2009-10	1.97	1.12	3.08	1.95	1.11	3.06	0.02
	<b>Total</b>		<b>6.16</b>	<b>5.41</b>	<b>11.57</b>	<b>6.05</b>	<b>5.27</b>	<b>11.32</b>
Gaya	2005-06	3.12	1.04	4.16	2.70	0.96	3.66	0.50
	2006-07	2.65	1.95	4.60	2.59	0.87	3.46	1.14
	2007-08	3.21	1.52	4.73	3.15	1.52	4.67	0.06
	2008-09	3.38	2.28	5.66	3.37	2.20	5.57	0.09
	2009-10	5.20	2.38	7.58	4.97	2.37	7.34	0.24
	<b>Total</b>		<b>17.56</b>	<b>9.17</b>	<b>26.73</b>	<b>16.78</b>	<b>7.92</b>	<b>24.70</b>
Jamui	2005-06	1.60	0.54	2.14	1.58	0.54	2.12	0.02
	2006-07	1.49	0.30	1.79	1.49	0.26	1.75	0.04
	2007-08	1.84	0.38	2.22	1.72	0.38	2.10	0.12
	2008-09	2.71	0.99	3.70	2.55	0.93	3.48	0.22
	2009-10	3.04	1.04	4.08	2.99	0.97	3.96	0.12
	<b>Total</b>		<b>10.68</b>	<b>3.25</b>	<b>13.93</b>	<b>10.33</b>	<b>3.08</b>	<b>13.41</b>
Kaimur	2005-06	1.54	0.57	2.11	1.54	0.57	2.11	0.00
	2006-07	1.06	1.69	2.75	1.03	1.60	2.63	0.12
	2007-08	1.31	2.30	3.61	1.30	2.04	3.34	0.27
	2008-09	1.53	1.20	2.73	1.50	1.10	2.60	0.13
	2009-10	2.59	0.99	3.58	2.33	0.79	3.12	0.46
	<b>Total</b>		<b>8.03</b>	<b>6.75</b>	<b>14.78</b>	<b>7.70</b>	<b>6.10</b>	<b>13.80</b>
Nawada	2005-06	1.26	0.61	1.87	1.24	0.61	1.85	0.02
	2006-07	1.31	1.70	3.01	1.29	1.67	2.96	0.05
	2007-08	1.76	2.45	4.21	1.66	2.43	4.09	0.12
	2008-09	2.09	2.02	4.11	1.92	1.91	3.83	0.28
	2009-10	2.70	1.59	4.29	2.57	1.53	4.10	0.19
	<b>Total</b>		<b>9.12</b>	<b>8.37</b>	<b>17.49</b>	<b>8.68</b>	<b>8.15</b>	<b>16.83</b>
Rohtas	2005-06	1.33	0.53	1.86	1.33	0.53	1.86	0.00
	2006-07	1.38	0.38	1.76	1.35	0.38	1.73	0.03
	2007-08	1.90	1.50	3.40	1.90	1.42	3.32	0.08
	2008-09	1.96	1.85	3.81	1.96	1.79	3.75	0.06
	2009-10	3.14	1.53	4.67	3.12	1.50	4.62	0.05
	<b>Total</b>		<b>9.71</b>	<b>5.79</b>	<b>15.50</b>	<b>9.66</b>	<b>5.62</b>	<b>15.28</b>

Name of division	Year	Allotment			Expenditure			Savings
VTP-1	2005-06	1.33	0.50	1.83	1.30	0.45	1.75	0.08
	2006-07	1.24	0.52	1.76	1.23	0.49	1.72	0.04
	2007-08	1.47	0.59	2.06	1.35	0.56	1.91	0.15
	2008-09	1.91	0.30	2.21	1.81	0.27	2.08	0.13
	2009-10	1.51	1.06	2.57	1.34	1.02	2.36	0.21
	<b>Total</b>	<b>7.46</b>	<b>2.97</b>	<b>10.43</b>	<b>7.03</b>	<b>2.79</b>	<b>9.82</b>	<b>0.61</b>
VTP-2	2005-06	1.39	0.57	1.96	1.29	0.48	1.77	0.19
	2006-07	1.33	0.51	1.84	1.30	0.46	1.76	0.08
	2007-08	1.50	0.57	2.07	1.43	0.50	1.93	0.14
	2008-09	2.30	0.08	2.38	2.21	0.05	2.26	0.12
	2009-10	1.80	1.03	2.83	1.80	0.95	2.75	0.08
	<b>Total</b>	<b>8.32</b>	<b>2.76</b>	<b>11.08</b>	<b>8.03</b>	<b>2.44</b>	<b>10.47</b>	<b>0.61</b>
<b>Grand Total</b>		<b>77.04</b>	<b>44.47</b>	<b>121.51</b>	<b>74.26</b>	<b>41.37</b>	<b>115.63</b>	<b>5.88</b>

**APPENDIX- 3.3**  
(Refer: Paragraph 3.8.2.3; Page - 96)

**Delay in submission of monthly Forest Accounts during 2007-10**

Sl. No.	Name of division	Year	Apr	May	Jun	Jul	Aug	Sep	Oct	Nov	Dec	Jan	Feb	Mar
1	Aurangabad	2005-06	8	0	0	3	56	26	33	21	15	22	37	19
		2006-07	0	7	42	39	59	59	43	37	51	14	36	26
		2007-08	9	28	27	18	22	20	52	50	42	35	20	24
		2008-09	45	14	33	36	36	69	21	8	43	20	2	24
		2009-10	22	28	22	22	44	52	36	14	7	0	26	25
2	Kaimur	2005-06	19	16	6	7	30	39	34	10	14	8	35	29
		2006-07	26	15	20	16	22	45	45	42	61	68	38	38
		2007-08	37	15	0	30	63	103	73	65	98	67	60	30
		2008-09	66	35	23	59	43	71	43	32	1	53	37	33
		2009-10	37	6	25	11	33	3	50	35	4	70	42	28
3	Gaya	2005-06	35	5	30	30	22	39	37	41	31	32	38	30
		2006-07	11	28	32	51	7	39	40	40	41	21	37	34
		2007-08	53	21	20	18	29	99	67	33	41	33	54	23
		2008-09	12	0	24	22	30	43	0	17	54	49	33	25
		2009-10	2	13	15	16	33	61	62	33	32	61	43	31
4	Jamu	2005-06	40	10	9	7	23	36	19	16	14	38	46	32
		2006-07	59	38	47	16	69	70	20	68	45	65	41	33
		2007-08	59	28	26	33	41	63	45	79	33	42	19	23
		2008-09	58	27	34	37	44	41	49	19	31	28	28	0
		2009-10	67	36	20	27	39	35	32	53	41	29	26	25
5	Nawada	2005-06	25	0	7	0	31	43	25	24	18	22	38	28
		2006-07	22	18	7	9	6	18	36	17	30	26	35	30
		2007-08	12	0	12	33	37	66	35	38	20	11	58	24
		2008-09	4	0	12	22	20	13	21	28	33	8	16	36
		2009-10	31	0	4	0	12	33	21	16	13	1	35	28
6	Rohtas	2005-06	11	9	37	37	9	9	18	30	25	31	35	28
		2006-07	24	16	13	25	61	31	16	36	38	34	42	31
		2007-08	12	52	28	36	12	2	23	5	2	0	10	23
		2008-09	19	18	10	25	11	89	58	28	0	56	26	25

Sl. No.	Name of division	Year	Apr	May	Jun	Jul	Aug	Sep	Oct	Nov	Dec	Jan	Feb	Mar
		2009-10	32	1	46	27	23	26	78	60	46	52	39	26
7	VTP-1, Bettiah	2005-06	14	8	3	7	25	26	33	23	48	26	52	31
		2006-07	6	29	58	44	23	21	31	40	34	8	42	37
		2007-08	37	6	11	9	8	0	22	22	24	24	23	13
		2008-09	18	1	30	3	9	28	31	1	38	7	13	46
		2009-10	13	15	5	9	24	8	12	26	4	10	61	37
8	VTP-2, Bettiah	2005-06	13	4	8	27	11	0	17	10	13	24	17	32
		2006-07	4	9	8	17	23	29	18	28	32	26	42	37
		2007-08	19	21	69	43	22	57	26	21	24	57	29	51
		2008-09	21	25	53	48	18	20	19	22	67	37	68	37
		2009-10	35	22	71	41	66	56	72	41	44	15	42	39

**APPENDIX- 3.4**

**(Refer: Paragraph 3.8.5.2; Page - 99)**

**Statement showing outstanding recoveries of Compensatory Afforestation  
and Net Present Value**

Sl.No.	Name of the User Agency	No. of the cases	Amount outstanding (₹ in lakh)
1	Road Construction Division, Banka	9	653.21
2	Road Construction Division, Jamui	2	181.27
3	Road Construction Division, Patna	3	164.39
4	Road Construction Division, Chhapra	2	160.51
5	Road Construction Division, Araria	1	111.54
6	Road Construction Division, Biharsharif	2	41.32
7	Central Public Works Division, Bhagalpur	6	116.86
8	Central Public Works Division, Gaya	4	147.67
9	Central Public Works Division, Purnea	1	42.01
10	Central Public Works Division, Sasaram	6	67.94
11	Central Public Works Division, Motihari	1	143.13
12	National Highway Division, Biharsharif	3	234.02
13	National Highway Division, Chhapra	1	170.53
14	IRCON, Darbhanga	1	183.65
	<b>Total</b>	<b>42</b>	<b>2418.05</b>



**APPENDIX- 3.5**  
(Refer: Paragraph 3.9.2; Page - 101)

*Allotments and expenditure under Chhatra Vriksharopan Yojana during 2006-10 in eight test-checked divisions*

(In ₹)

Sl.No.	Name of division	Year	Allotment	Expenditure	Surrender	Percentage
1	Aurangabad	2006-07	616500	616500	0	0
		2007-08	1354200	938600	415600	31
		2008-09	2010520	828187	1182333	59
		2009-10	1569495	1569495	0	0
		<b>Total</b>	<b>5550715</b>	<b>3952782</b>	<b>1597933</b>	<b>29</b>
2	Kaimur	2006-07	660000	660000	0	0
		2007-08	1200000	700000	500000	42
		2008-09	1246415	818360	428055	34
		2009-10	850875	384040	466835	55
		<b>Total</b>	<b>3957290</b>	<b>2562400</b>	<b>1394890</b>	<b>35</b>
3	Gaya	2006-07	367000	367000	0	0
		2007-08	1324100	1324100	0	0
		2008-09	3024180	2472767	551413	18
		2009-10	3060290	3016131	44159	1
		<b>Total</b>	<b>7775570</b>	<b>7179998</b>	<b>595572</b>	<b>8</b>
4	Jamui	2006-07	470000	470000		0
		2007-08	1285000	785000	500000	39
		2008-09	1904360	1499900	404460	21
		2009-10	1680700	1220555	460145	27
		<b>Total</b>	<b>5340060</b>	<b>3975455</b>	<b>1364605</b>	<b>26</b>
5	Nawada	2006-07	536300	224000	312300	58
		2007-08	993600	827900	165700	17
		2008-09	1461285	1204325	256960	18
		2009-10	1413275	1339275	74000	5
		<b>Total</b>	<b>4404460</b>	<b>3595500</b>	<b>808960</b>	<b>18</b>
6	Rohtas	2006-07	610000	610000	0	0
		2007-08	1605000	979700	625300	39
		2008-09	2105575	1564792	540783	26
		2009-10	1953300	1827830	125470	6
		<b>Total</b>	<b>6273875</b>	<b>4982322</b>	<b>1291553</b>	<b>21</b>
7	VTP-1, Bettiah	2006-07	571500	571500		0
		2007-08	976500	976500		0
		2008-09	1518805	1274500	244305	16
		2009-10	1072740	1072740		0
		<b>Total</b>	<b>4139545</b>	<b>3895240</b>	<b>244305</b>	<b>6</b>
8	VTP-2, Bettiah	2006-07	190000	131400	58600	31
		2007-08	826400	107500	718900	87
		2008-09	546125	268777	277348	51
		2009-10	516880	69000	447880	87
		<b>Total</b>	<b>2079405</b>	<b>576677</b>	<b>1502728</b>	<b>72</b>
		<b>Grand Total</b>	<b>39520920</b>	<b>30720374</b>	<b>8800546</b>	<b>22</b>

**APPENDIX- 3.6**  
**(Refer Paragraph: 3.10.1 ; Page - 105)**

**Statement showing allotments and expenditure during 2005-10 in Valmiki Tiger Project**

(₹ in crore)

Year	Allotment			Expenditure			Excess(+)/ savings (-)		
	Non-plan	Plan	Total	Non-plan	Plan	Total	Non-plan	Plan	Total
2005-06	2.72	1.07	3.79	2.59	0.93	3.52	0.13	0.14	0.27
2006-07	2.56	1.03	3.59	2.52	0.95	3.47	0.04	0.08	0.12
2007-08	2.97	1.16	4.13	2.78	1.05	3.83	0.19	0.11	0.39
2008-09	4.22	0.38	4.60	4.03	0.33	4.36	0.19	0.05	0.24
2009-10	3.31	2.09	5.40	3.14	1.97	5.11	0.17	0.12	0.29
<b>Total</b>	<b>15.78</b>	<b>5.73</b>	<b>21.51</b>	<b>15.06</b>	<b>5.23</b>	<b>20.29</b>	<b>0.72</b>	<b>0.50</b>	<b>1.22</b>

**APPENDIX- 3.7***(Refer: Paragraph 3.11.1; Page - 107)***Statement showing offices for which no post of subordinate staff was sanctioned by Government**

Sl.No.	Name of offices for which post of Head of the office was sanctioned	Date of sanction	Post sanctioned for office establishment	Posting made by Government	Space for office building
1	Principle Chief Conservator of Forest (PCCF), Bihar	15.11.2000	0	0	<b>Insufficient space for working</b>
2	Addl. PCCF-cum-Chief Wildlife Warden, Bihar	25.5.2003	0	0	
3	APCCF (Dev.), Bihar	25.4.2003	0	0	
4	Regional Chief Conservator of Forest (RCCF), Muzaffarpur	19.6.1991	0	0	<b>Available</b>
5	RCCF, Bhagalpur	15.9.2006	0	0	<b>Not available</b>
6	Chief Conservator of Forest (Working Plan, Training & Extension), Bihar	15.9.2006	0	0	<b>Working in two rooms in the building of National Highway Authority</b>
7	CCF (Administration & HRD), Bihar	15.9.2006	0	0	<b>Not available</b>
8	Director, Ecology & Environment, Bihar	15.9.2006	0	0	<b>Not available</b>
9	Conservator of Forest (CF), Wildlife Circle, Patna	15.9.2006	0	0	<b>Not available</b>
10	CF, Working Plan Circle, Patna	15.9.2006	0	0	<b>Not available</b>
11	CF, Siwan Circle, Siwan	15.9.2006	0	0	<b>Not available</b>

**APPENDIX- 3.8**  
**(Refer: Paragraph 3.12; Page - 108)**

**Details of Inspection Reports**

Year in which IR issued	O/o the PCCF, APCCF (Development), APCCF (Wildlife), RCCF, CF			Forest Divisions		
	Inspection Reports	Outstanding Paragraph	Ist reply is yet to be received	Inspection Report	Outstanding Paragraph	Ist reply is yet to be received
Upto March 2006	4	17	-	42	199	86
2006-07	1	8	8	15	176	39
2007-08	0	0	0	11	113	31
2008-09	1	11	11	21	166	81
2009-10	1	4	4	13	73	69
<b>Total</b>	<b>7</b>	<b>40</b>	<b>23</b>	<b>102</b>	<b>727</b>	<b>306</b>