

APPENDIX II

(Reference: Paragraph 1.7.3; Page 6)

Details of expenditure on transferred schemes, agency schemes and Zilla Parishad's Own Schemes for the year 2009-10

(₹ in crore)

Sr. No.	Name of Zilla Parishad	Expenditure on Transferred Schemes	Expenditure on Agency Schemes	Expenditure on ZPs Own Schemes	Total Expenditure
1	Ahmednagar	669.00	50.00	26.00	745.00
2	Akola	556.44	85.07	31.39	672.90
3	Amravati	437.42	109.06	53.58	600.06
4	Aurangabad	429.29	51.04	16.62	496.95
5	Bhandara	208.11	26.33	19.63	254.07
6	Beed	902.00	111.00	28.00	1041.00
7	Buldhana	453.00	40.00	427.00	920.00
8	Chandrapur	390.04	46.40	70.93	507.37
9	Dhule	286.88	34.47	6.33	327.68
10	Gadchiroli	260.61	30.60	2.24	293.45
11	Gondia	471.45	74.39	64.79	610.63
12	Hingoli	350.37	37.26	2.80	390.43
13	Jalgaon	509.47	75.59	13.33	598.39
14	Jalna	254.96	30.90	3.14	289.00
15	Kolhapur	565.90	41.79	15.39	623.08
16	Latur	437.23	32.30	8.22	477.75
17	Nagpur	679.02	122.61	36.82	838.45
18	Nanded	528.12	57.17	3.33	588.62
19	Nandurbar	-	-	-	-
20	Nashik	-	-	-	-
21	Osmanabad	301.73	21.61	3.66	327.00
22	Parbhani	284.08	23.56	4.12	311.76
23	Pune	680.57	74.29	75.45	830.31
24	Ratnagiri	408.24	46.33	6.96	461.53
25	Raigad	-	-	-	-
26	Sangli	-	-	-	-
27	Satara	564.02	54.10	17.34	635.46
28	Sindhudurg	293.31	33.17	12.15	338.63
29	Solapur	605.02	56.34	32.97	694.33
30	Thane	597.46	28.34	40.84	666.64
31	Wardha	211.36	32.50	12.08	255.94
32	Washim	171.95	12.87	3.01	187.83
33	Yavatmal	516.83	52.10	18.05	586.98
	Total	13023.88	1491.19	1056.17	15571.24

(Source: As per information received from CAFOs of respective ZPs)

Appendix III

(Reference: Paragraph 1.12.4; Page 11)

Outstanding Inspection Reports and Paras from Chief Auditor, Local Fund Accounts Report

Year of the Report	Number of outstanding Paras		Objected amount (₹ in crore)	
	Government Funds	ZPs Own Funds	Government Funds	ZPs own Funds
1962-63 to 1998-99	40995	17673	1082.19	281.75
1999-00	4035	2537	223.18	55.20
2000-01	4233	1909	132.13	35.19
2001-02	3231	2064	103.87	21.87
2002-03	5265	2932	395.17	74.27
2003-04	4292	3210	421.81	53.45
2004-05	8587	4088	223.48	74.14
2005-06	11521	3894	448.36	108.98
2006-07	10157	2864	887.34	113.72
2007-08	13148	993	975.40	117.31
2008-09	Report not yet finalised			
Total	105464	42164	4892.93	935.88

(Source: As per CALFA report 2007-08)

Appendix IV

(Reference : Paragraph 2.1.5 ; Page 17)

List of selected Gram Panchayats

Gram Panchayat					Zilla Parishad	Region
Exited	Completed but not exited	Incomplete	Deleted	Total		
Hivarapen	Poharadevi Shelgaon-Bagade	Bramha Pimpalgaon Kh	Khirda	6	Washim	Amravati
Rudha	Sarai Savargaon	Jurang Mandva	Gourala	6	Yavatmal	
Marsoolwadi	Bhingi Tondapur	Garkheda Phalegaon	Mhatargaon	6	Hingoli	Aurangabad
Banshelki	Dhondi-Hipparaga Parchanda	Nitur Sumthana	----	5	Latur	
Kasti	Kaudgaon Terkheda	Koregaonwadi Rosa	Pachpimpla (Khairevasti)	6	Osmanabad	
Wangaon	Ashele Shenave	Ambiste Moj	----	5	Thane	Konkan
Mokhala	Chandankheda Padoli	Chekthanevasna Pimpalkhut	Sagra	6	Chandrapur	Nagpur
Dehgaon-Rangari	Borda-Sarakha Pota-Chankapur	Banpuri Panjari Bk	Alagondi Chimnazari	6	Nagpur	
Savkheda Bk	Pahur-Peth Wasre	Adgaon Loni Kh	Javkhede Kh Kurvel Mondhale	8	Jalgaon	Nashik
Lingnoor	Bagni Kasegaon	Kadegaon Umdi	Alsand	6	Sangli	Pune
10	20	20	10	60	10	6

Appendix V

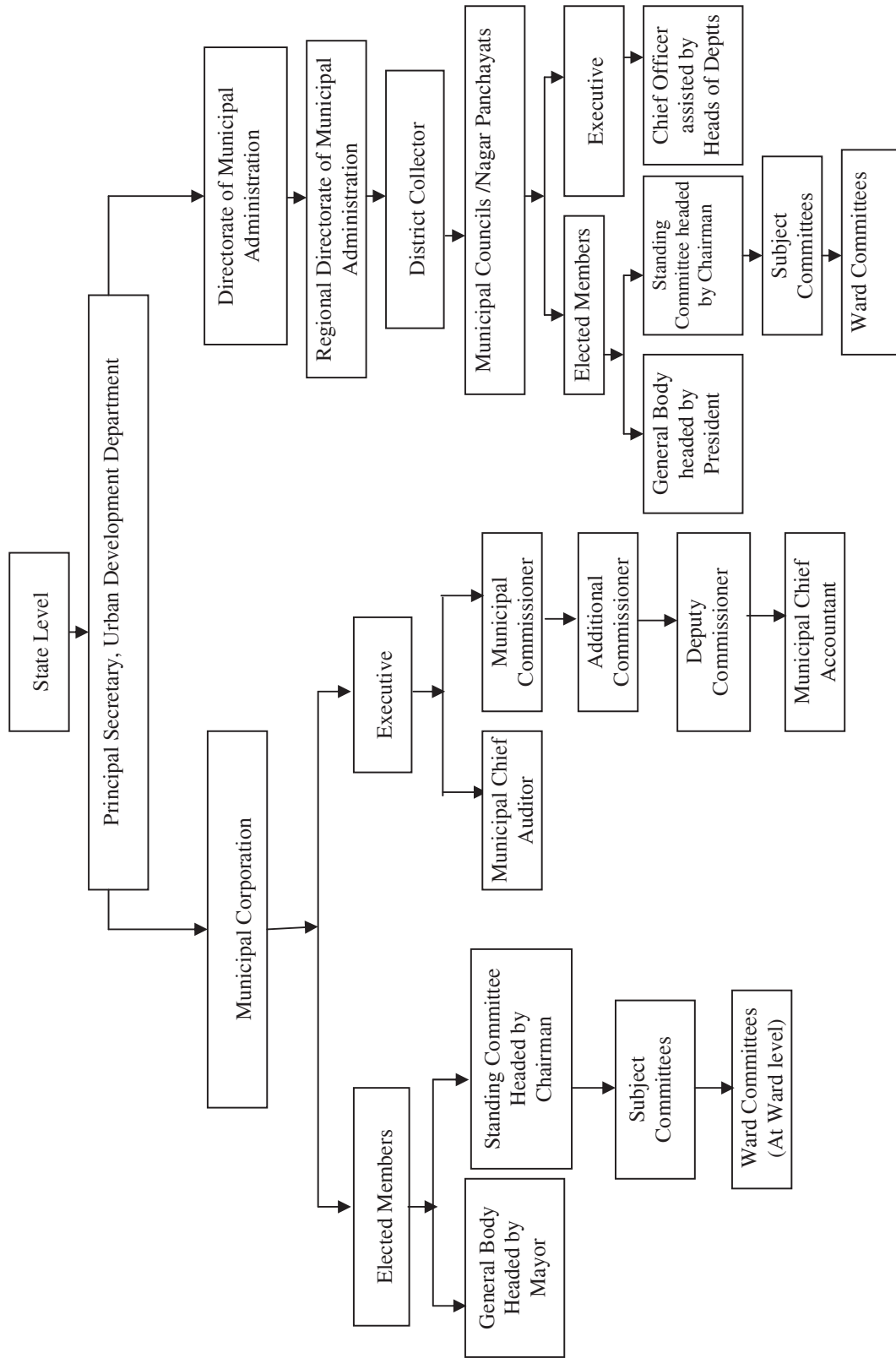
(Reference : Paragraph 2.1.8.2(vii); Page 27)

List of GPs with incomplete works

Gram Panchayat	Total	Zilla Parishad	Region
Incomplete			
Bramha Pimpalgaon Kh	2	Washim	Amravati
Jurang Mandva	2	Yavatmal	
Garkheda Phalegaon	2	Hingoli	Aurangabad
Nitur Sumthana	2	Latur	
Koregaonwadi Rosa	2	Osmanabad	
Ambiste Moj	2	Thane	Konkan
Chekthanevasna Pimpalkhut	2	Chandrapur	Nagpur
Banpuri Panjari Bk	2	Nagpur	
Adgaon Loni Kh	2	Jalgaon	Nashik
Kadegaon Umdi	2	Sangli	Pune
Total	20	10	6

Appendix VI
(Reference: Paragraph 4.3.1; Page 40)

Organisational Structure



Appendix VII

(Reference: Paragraph 4.4.5; Page 41)

Financial position of Municipal Corporations

(₹ in crore)

Sr. No.	Name of the Corporations	2007-08		2008-09		2009-10	
		Receipts	Expenditure	Receipts	Expenditure	Receipts	Expenditure
1	Ahmednagar	97	95	106.40	121.90	115.50	100.80
2	Akola	138	136	117.40	118.89	245.85	192.16
3	Amravati	86	87	93.22	96.78	156.80	138.87
4	Aurangabad	221	224	244.47	251.72	242.82	248.11
5	Bhiwandi-Nizampur	197	196	242.03	236.77	409.21	187.03
6	MCGM	10075	7528	15658.44	15709.16	19035.16	18972.82
7	Dhule	77	84	69.82	76.21	109.93	100.32
8	Jalgaon	107	105	104.46	104.53	111.21	111.15
9	Kalyan-Dombivli	270	278	439.46	565.64	569.46	598.97
10	Kolhapur	201	197	124.38	120.30	139.04	155.80
11	Malegaon	94	69	63.84	61.44	151.39	123.35
12	Mira-Bhayandar	214	201	267.99	248.94	332.90	267.52
13	Nagpur	471	424	508.96	507.98	654.71	652.89
14	Nanded-Waghala	146	227	427.20	425.00	385.39	311.05
15	Nashik	577	541	516.80	519.64	509.75	570.57
16	Navi Mumbai	578	530	735.32	650.54	823.63	916.26
17	Pimpri-Chinchwad	1304	1275	1575.31	1786.02	1281.34	996.58
18	Pune	3573	3506	1455.28	1469.83	2031.64	2190.85
19	Sangli	111	180	107.54	101.23	86.70	82.01
20	Solapur	151	151	144.45	144.45	162.52	196.43
21	Thane	754	612	793.06	806.36	1074.62	1003.15
22	Ulhasnagar	139	133	177.00	155.00	230.51	191.32
	Total	19581	16779	23972.83	24278.33	28860.08	28308.01

(Source: Information received from all corporations)

Appendix VIII

(Reference: Paragraph 4.4.6; Page 41)

Arrears in Water Tax Collection 2009-10

(₹ in crore)

Name of the Corporation	Opening Balance	Current Demand	Total Demand	Recovery		Closing Balance
				Current	Old outstanding	
Ahmednagar	18.14	7.03	25.17	2.98	3.98	18.21
Akola	0.00	0.00	0.00	0.00	0.00	0.00
Amravati	0.00	0.00	0.00	0.00	0.00	0.00
Aurangabad	36.96	17.43	54.39	8.20	9.08	37.11
Bhiwandi-Nizampur	13.02	7.20	20.22	3.69	2.09	14.44
MCGM	2199.38	2361.88	4561.26	1381.57	385.51	2794.18
Dhule	3.23	3.55	6.78	1.33	1.82	3.63
Jalgaon	0.00	0.00	0.00	0.00	0.00	0.00
Kalyan-Dombivli	20.14	40.99	61.13	32.42	4.59	24.12
Kolhapur	8.36	21.36	29.72	15.90	0.00	13.82
Malegaon	5.26	4.62	9.88	2.04	2.33	5.51
Mira-Bhayandar	3.02	25.83	28.85	11.34	1.95	15.56
Nagpur	0.00	0.00	0.00	0.00	0.00	0.00
Nanded-Waghala	5.81	4.75	10.56	2.88	1.60	6.08
Nashik	10.37	23.29	33.66	7.76	22.90	3.00
Navi Mumbai	19.40	54.99	74.39	48.07	5.19	21.13
Pune	261.38	60.03	321.41	48.36	0.00	273.05
Pimpri-Chinchwad	0.00	0.00	0.00	0.00	0.00	0.00
Sangli Miraj Kupwad	9.79	13.57	23.36	9.32	4.12	9.92
Solapur	23.30	13.14	36.44	8.45	4.07	23.92
Thane	41.00	61.00	102.00	12.00	44.00	46.00
Ulhasnagar	40.17	14.50	54.67	4.00	5.95	44.72
Total	2718.73	2735.16	5453.89	1600.31	499.18	3354.40

(Source: Information received from respective Corporations)

Appendix IX

(Reference: Paragraph 4.4.6; Page 41)

Arrears in Property Tax Collection 2009-10

(₹ in crore)

Name of the Corporation	Opening Balance	Current Demand	Total Demand	Recovery		Closing Balance
				Current	Old outstanding	
Ahmednagar	69.00	17.75	86.75	5.29	24.25	57.21
Akola	0.00	0.00	0.00	0.00	0.00	0.00
Amravati	26.82	19.52	46.34	14.21	5.32	26.81
Aurangabad	24.88	23.33	48.21	15.47	14.92	17.82
Bhiwandi-Nizampur	11.58	13.88	25.46	11.34	5.89	8.23
MCGM	3392.98	1550.31	4943.29	835.74	82.63	4024.92
Dhule	6.16	5.88	12.04	2.38	3.13	6.53
Jalgaon	0.00	0.00	0.00	0.00	0.00	0.00
Kalyan-Dombivli	53.45	110.71	164.16	73.85	17.14	73.17
Kolhapur	7.62	19.02	26.64	7.05	12.35	7.24
Malegaon	7.32	5.65	12.97	2.18	3.37	7.42
Mira-Bhayandar	20.19	53.51	73.70	48.56	9.58	15.56
Nagpur	111.82	85.28	197.10	63.11	45.77	88.22
Nanded-Waghala	10.57	10.15	20.72	0.00	10.55	10.17
Nashik	30.10	45.15	75.25	36.69	18.05	20.51
Navi Mumbai	32.17	201.39	233.56	169.78	30.08	33.70
Pune	329.38	396.51	725.89	269.98	87.45	368.46
Pimpri-Chinchwad	0.00	0.00	0.00	0.00	0.00	0.00
Sangli-Miraj-Kupwad	12.03	22.36	34.39	11.58	3.52	19.29
Solapur	27.56	19.38	46.94	13.55	5.07	28.32
Thane	88.30	160.74	249.04	30.94	144.13	73.97
Ulhasnagar	69.02	31.64	100.66	10.90	12.21	77.55
TOTAL	4330.95	2792.16	7123.11	1622.60	535.41	4965.10

(Source: Information received from respective Corporations)

Appendix X

(Reference: Paragraph 4.4.7; Page 43)

Statement of expenditure of all Municipal Corporations during the period 2005-06 to 2009-10

Municipal Corporation	2005-06		2006-07		2007-08		2008-09		2009-10	
	Total Expenditure	Percentage to total	Total Expenditure	Percentage to total	Total Expenditure	Percentage to total	Total Expenditure	Percentage to total	Total Expenditure	Percentage to total
1. Administration										
(a) Establishment	4677	37.92	4265	28.78	4741	29.05	4735	19.50	4674	16.51
(b) Others	235	1.91	209	1.41	196	1.20	850	3.50	1692	5.98
2. Recovery of taxes	37	0.30	45	0.30	20	0.12	131	0.54	0	0
3. Street lighting	205	1.66	274	1.85	235	1.44	368	1.52	321	1.13
4. Water Supply	1232	9.99	1410	9.51	1362	8.35	1857	7.65	1154	4.08
5. Public Security	29	0.24	42	0.28	190	1.16	164	0.68	74	0.26
6. Public Health	503	4.08	651	4.39	1383	8.48	1736	7.15	572	2.02
7. Drainage and sewerage	465	3.77	1047	7.07	1207	7.40	1121	4.62	506	1.79
8. Construction works	932	7.56	1462	9.87	3540	21.69	5048	20.79	7082	25.02
9. Transport	247	2.00	439	2.96	30	0.18	69	0.28	104	0.37
10. Education	183	1.48	289	1.95	793	4.86	1182	4.87	477	1.68
11. Expenditure on weaker sections	26	0.21	58	0.39	402	2.46	541	2.23	237	0.84
12. Extraordinary expenditure and loans extended	590	4.78	871	5.88	547	3.35	687	2.83	266	0.94
13. Other expenditure	2974	24.10	3758	25.36	1674	10.26	5789	23.84	11149	39.38
Total Col 2 to 13	7423	60.17	10346	69.81	11383	69.75	18693	77.00	21942	77.51
Total expenditure	12335	100	14820	100	16320*	100	24278	100	28308	100

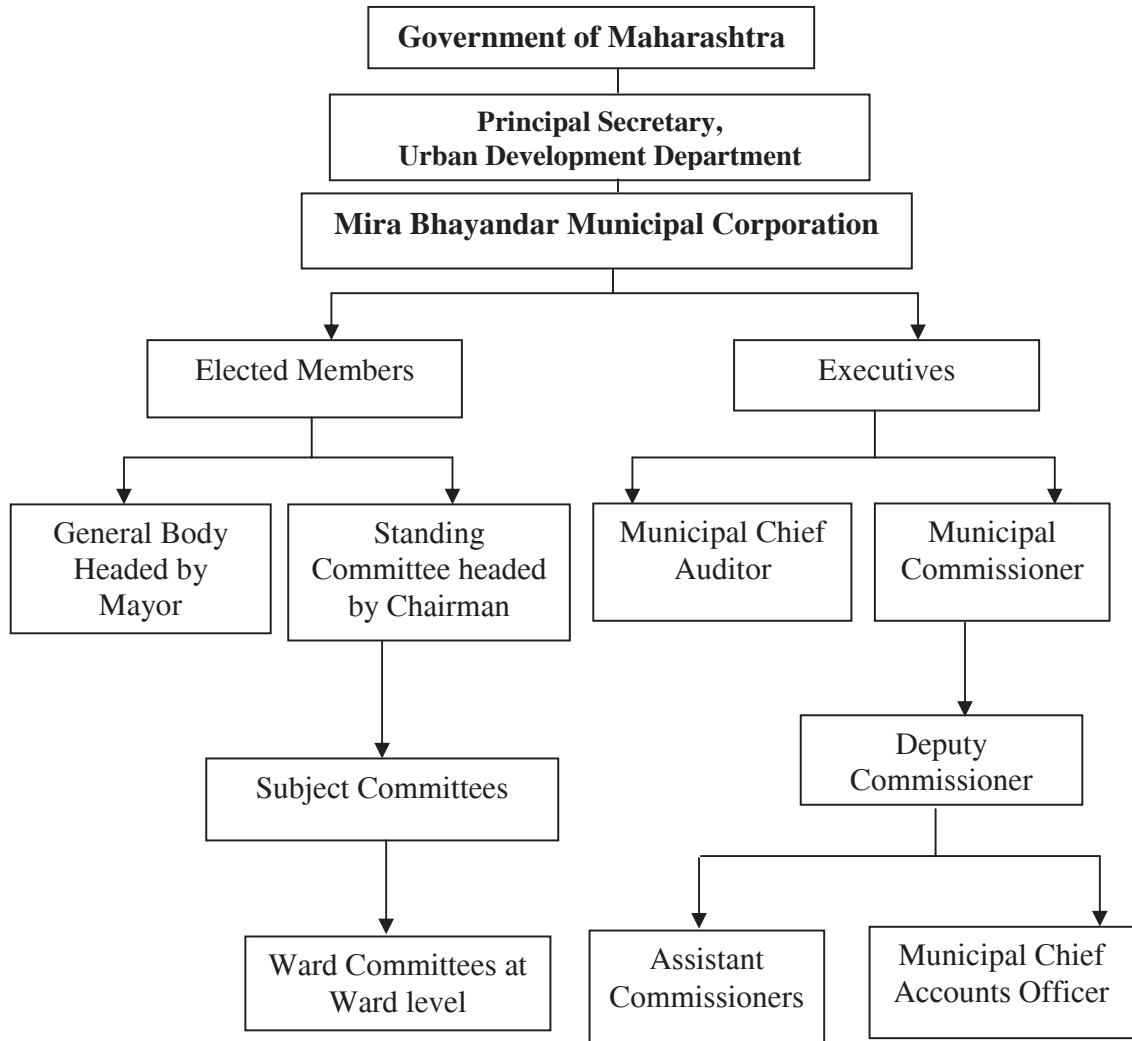
(Source : Information received from all Corporations)

*Includes unreconciled expenditure of MCGM for the year 2007-08 as ₹ 9100 crore as per budget estimate 2009-10 of MCGM and it differs from figures shown in the Audit Report 2007-08 as ₹ 9508 crore (as furnished by the MCGM).

Appendix XI

(Reference : Paragraph 5.2.2: Page 63)

Organisational set up of Mira Bhayandar Municipal Corporation



Appendix XII

(Reference: Paragraph 5.2.5; Page 64)

Services and Duties of Municipal Corporation (Obligatory Services) (Section 63 of BPMC Act)

- 1) Erection of substantial boundary marks for defining the limits or any alteration in the limits of the city.
- 2) Water scavenging and cleaning of all public streets and the places in the City and the removal of all garbage there from.
- 3) The collection, removal, treatment and disposal of sewage, preparations of compost manure from such sewage, offensive matter and rubbish.
- 4) The construction, maintenance and cleansing of drains and drainage works and of public latrines, water-closets, urinals and similar conveniences.
- 5) The entertainment of a fire-brigade equipped with suitable appliances for the extinguishment of fires and the protection of life and property against fire.
- 6) The construction or acquisition and maintenance of public hospitals and dispensaries including hospitals for the isolation and treatment of persons suffering or suspected to be infected with a contagious or infectious disease and carry out other measures necessary for public medical relief.
- 7) The lighting of public streets, municipal markets and public buildings vested in the Corporation.
- 8) The maintenance of a municipal office and of all public monuments and open spaces and other property vesting in the Corporation.
- 9) The naming or numbering of streets and of public places vesting in the Corporation and the numbering of premises.
- 10) The regulation and abatement of offensive and dangerous trades or practices.
- 11) The maintenance, change and regulation of places for the disposal of the dead and the provision of new places for the said purpose and disposing of unclaimed dead bodies.
- 12) The construction or acquisition and maintenance of public markets and slaughter-houses and the regulation of all markets and slaughter-houses.
- 13) The construction or acquisition and maintenance of cattle ponds.
- 14) Public vaccination in accordance with the provisions of the District Vaccination Act, 1892.

Appendix XII (contd.)

**Services and Duties of Municipal Corporation
(Obligatory Services) (Section 63 of BPMC Act)**

- 15) Maintaining, aiding and suitably accommodating stocks for primary education.
- 16) The reclamation of unhealthy localities, the removal of noxious vegetation and generally the abatement of all nuisances.
- 17) The registration of births and deaths.
- 18) The construction, maintenance, alteration and improvement of public streets, bridges, sub ways, culverts, cause-ways and the like.
- 19) The removal of obstructions and projections in or upon streets, bridges and the other public places.
- 20) The management of maintenance of all municipal water works and the construction or acquisition of new works necessary for a sufficient supply of water for public and private purposes.
- 21) Preventing and checking the spread of dangerous diseases.
- 22) The securing or removal of dangerous buildings and places.
- 23) The construction and maintenance of residential quarters for the municipal conservancy staff.
- 24) Fulfillment of any obligation imposed by or under this Act or any other law for the time being in force.
- 25) Subject to adequate provision being made for the matters specified above the provisions of relief to destitute persons in the City in times of famine and scarcity and the establishment and maintenance of relief works in such times.

Appendix XIII

(Reference : Paragraph 5.2.11.1; Page 72)

Arrears of Property Tax of Mira Bhayandar Municipal Corporation

Year	Nature of demand	Demand	Collection	Balance	Percentage of recovery
		(₹ in crore)			
2004-05	Arrears	15.78	6.75	9.03	
	Current	23.90	20.10	3.80	
	Total	39.68	26.85	12.83	68
2005-06	Arrears	17.64	6.47	11.17	
	Current	34.90	27.91	6.99	
	Total	52.54	34.38	18.16	65
2006-07	Arrears	19.23	8.52	10.71	
	Current	36.02	33.21	2.81	
	Total	55.25	41.73	13.52	76
2007-08	Arrears	23.03	12.19	10.84	
	Current	46.92	40.60	6.32	
	Total	69.95	52.79	17.16	75
2008-09	Arrears	19.48	8.43	11.05	
	Current	47.87	43.74	4.13	
	Total	67.35	52.17	15.18	77

Appendix XIV

(Reference : Paragraph 5.2.12; Page 73)

Arrears of Water Charges of Mira Bhayandar Municipal Corporation

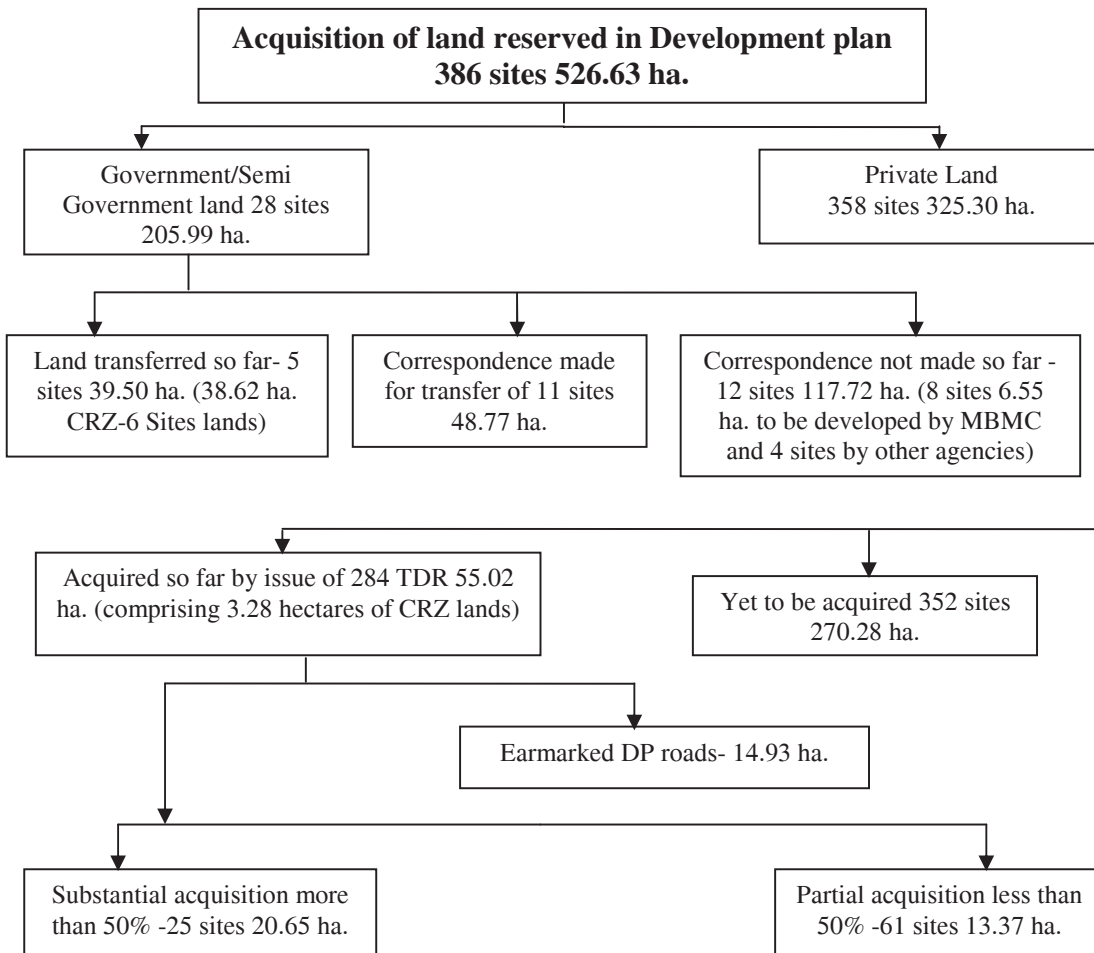
Year	Nature	Demand	Collection	Balance	Percentage
		(₹ in crore)			
2004-05	Arrears	1.00	0.44	0.56	
	Current	14.93	13.96	0.97	
	Total	15.93	14.40	1.53	90
2005-06	Arrears	1.86	1.06	0.80	
	Current	17.88	17.27	0.61	
	Total	19.74	18.33	1.41	93
2006-07	Arrears	1.97	1.06	0.91	
	Current	20.77	18.59	2.18	
	Total	22.74	19.65	3.09	86
2007-08	Arrears	3.03	2.08	0.95	
	Current	21.29	20.64	0.65	
	Total	24.32	22.72	1.60	93
2008-09	Arrears	2.41	1.40	1.01	
	Current	23.22	22.16	1.06	
	Total	25.63	23.56	2.07	92

Appendix XV

(Reference : Paragraph 5.2.14.1; Page 75)

Acquisition of lands reserved in Development Plan

Development Plan of Mira Bhayandar Municipal Corporation (MBMC) have 386 sites (526.63 hectare) to be developed for various purposes alongwith 415 kms of DP roads of various widths. Of this 128 sites comprising 175.88 hectare (ha) comes under CRZ/NDZ which could not be developed due to pending writ petition (PIL No. 87 of 2006) filed by Bombay Environmental Action Group V/s. GOM/BMC/MBMC/Coastal Zone Management Authority *etc.* for transfer of all mangroves areas owned by Government to Forest Department and not to allow any new construction within prescribed limits. Thus MBMC was to develop 258 sites comprising 350.75 ha of lands in its DP which was free from CRZ/NDZ.



NOTE: MBMC received its CRZ demarcation on 30.06.2005. Acquisition made earlier also includes CRZ/NDZ lands. Private land acquired for development- 55.02 ha. less DP Roads 14.93 ha.= 40.09 ha.

Appendix XVI

(Reference: Paragraph 5.2.14.2; Page 75)

Development of reservation sites in Development Plan as per DCR of Mira Bhayandar Municipal Corporation (MBMC)

