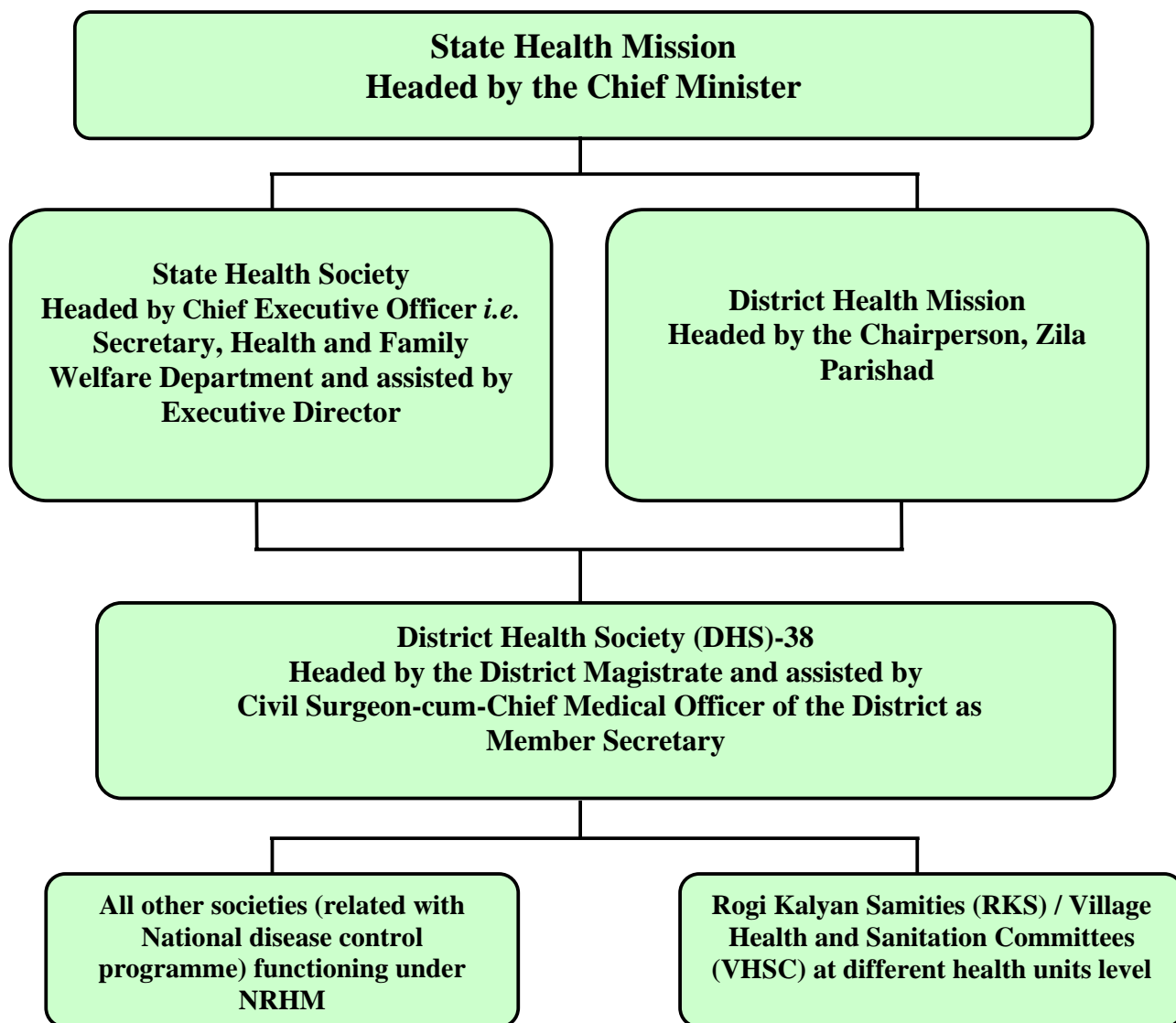


**APPENDIX – 1.1.1**  
*(Refer: Paragraph 1.1.2; Page -2)*

*Organisational set-up for implementation of NRHM*



**Health Units**

**Referral Hospitals (RHs),  
 Primary Health Centres (PHCs)  
 and Health Sub Centres (HSCs)**

**APPENDIX – 1.1.2**  
(Refer: Paragraph 1.1.7; Page - 5)

**Statement of funds proposed/approved under PIP and grants released by GOI**

*(Rupees in crore)*

Year	Amount Proposed in PIP	Amount approved in PIP	Grants received by SHS		Remarks
			as per Financial statement	On the basis of release orders of GOI	
2005-06	NA	NA	129.81	163.94	Due to improper classification of year wise funds which includes the grants of Rs 22.99 crore pertaining to the period 2004-05, booked in 2005-06 and funds pertaining to the period 2005-06 were further booked in 2006-07 and so on, resulted in difference of amount calculated as per the release orders of grants from GOI.
2006-07	178.94	146.62	341.26	303.65	
2007-08	849.25	1005.45 <sup>1</sup>	247.45	226.81	
2008-09	813.86	853.35	645.10	645.10	
<b>Total</b>	<b>1842.05</b>	<b>2005.42</b>	<b>1363.62</b>	<b>1339.50</b>	

<sup>1</sup> PIP approved amount includes the unspent balance (Rs 293.03 crore) of available funds at the end of financial year 2006-07 under RCH and Mission Flexible Pool and Rs 712.42 crore were approved for 2007-08 activities under NRHM.

**APPENDIX-1.1.3**  
(Refer: Paragraph 1.1.7; Page-6)

**Statement showing savings under Disease Control Programmes**

*(Rupees in lakh)*

Year	Heads	National Vector Borne Disease Control Programme	National TB Control Programme	National Leprosy Eradication Programme	National Programme for Control of Blindness**	Integrated Disease Surveillance Programme
2005-06	Opening Balance	0.65	376.88	404.10*	18.96	0
	Grant-in-aid received	553.49	396.39	0	100.75	0
	Total Expenditure/ Expenditure at SHS level	376.77/56.10	433.20/28.93	136.82/50.62	93.34/0.67	0
	Closing Balance (percentage savings)	177.37 (32)	340.07 (44)	267.28 (66)	26.37 (22)	0
2006-07	Opening Balance	177.37	340.07	272.33*	26.37	0
	Grant-in-aid received	473.87	479.26	39.16	421.41	0
	Total Expenditure/ Expenditure at SHS level	298.99/36.99	528.85/20.67	51.67/5.40	298.21/7.71	0
	Closing Balance (percentage savings)	352.25 (54)	290.48 (35)	259.82	149.57 (33)	0
2007-08	Opening Balance	352.25	290.48	268.30*	149.57	0
	Grant-in-aid received	469.49	655.00	0	85.00	125.00
	Total Expenditure/ Expenditure at SHS level	529.13/24.36	756.23/48.58	157.47/0.75	139.52/7.12	54.60/54.60
	Closing Balance (percentage savings)	292.61 (36)	189.25 (20)	110.83 (41)	95.05 (41)	70.40 (56)
2008-09	Opening Balance	292.61	189.25	110.83	95.05	70.40
	Grant-in-aid received	0	770.37	0	473.51	0
	Total Expenditure/ Expenditure at SHS level	206.55/2.55	690.09/3.67	12.77/0	152.73/1.32	0
Grand total during 2005-09	Grant-in-aid received including opening balance of 1.04.2005	1497.50	2677.90	456.79 <sup>2</sup>	1099.63	125.00
	Total expenditure/ Expenditure at SHS level	1411.44/120	2408.37/101.85	358.73	683.80/16.82	54.60/54.60
	Closing Balance (percentage savings)	86.06 (30)	269.53 (28)	98.06 (88)	415.83 (73)	70.40 (100)

\* Including interest earned in respective year.

\*\* Including released and spent amount for Medical College.

<sup>2</sup> Including interest.

**APPENDIX-1.1.4**  
(Refer: Paragraph 1.1.7.1; Page - 7)

*Statement showing different opening balances*

*(Rupees in crore)*

Opening balance	Amount as on 1 April 2005
As per SOE	47.66
As per Bank account	43.78
As per financial statement (August 2008)	52.67
As per the reply (December 2008) of the SHS	43.69

**APPENDIX-1.1.5**  
(Refer: Paragraph 1.1.7.1; Page -7)

*Statement showing incorrect SOEs issued to GOI by State Health Society*

*(Rupees in crore)*

Period of quarter ending	Closing balance	Period of succeeding quarter	Opening balance	Difference
April - September 2005	105.67	October - December 2005	81.03	(-) 24.64
April - June 2006	143.88	July - September 2006	103.21	(-) 40.67
July - September 2006	196.87	October - December 2006	215.70	(+) 18.83
<b>Total</b>				<b>(-) 46.48</b>

**APPENDIX-1.1.6**  
(Refer: Paragraph 1.1.7.1; Page - 7)

*Discrepancies in the Statements of Expenditure submitted by the State Health Society*

Heads	As per the SHS (December 2008)	As per the SHS (August 2008)	Remarks
<i>(Rupees in crore)</i>			
Opening balance as on 1.04.2005	43.69	43.78	AS per the Bank statements.
Grants from GOI and GOB	939.00	939.00	-
Interest	23.25	23.25	-
Other receipt	4.41	4.41	-
<b>Total (a)</b>	1010.35	1010.44	-
Expenditure at SHS and release of advances	<b>890.96</b>	<b>859.40</b>	Supportive records not furnished.
Refund to GOI	11.21	11.21	
<b>Total (b)</b>	902.17	870.61	
<b>Balance (a-b) as on 31.3.2008</b>	108.18	139.83	<i>As per Bank statements there was closing balance of Rs 116.22 crore as on 31.03.2008.</i>

**APPENDIX-1.1.7**  
(Refer: Paragraph 1.1.7.2; Page - 8)

**Statement showing loss of interest due to delayed transfer of funds**

*(Rupees in lakh)*

Sl. No.	Name of bank/ account number	Audit observations	Loss of interest <sup>3</sup>	Remarks
1	Canara Bank Account No. 21177	The account was opened with depositing Rs 10.34 crore (GIA- Untied Fund for HSCs) on 3.5.2006, thereafter the total sum was transferred (16.2.2007) to SBI, Ashiana Nagar Account No. 30043952661 and further it was transferred in Allahabad Bank Account No. 105965 on 20.4.2007.	6.03	The unnecessary transfer of funds in mid of the month resulted in loss of interest for two months.
2	PNB Account No. 13712	Rs 105.18 crore was transferred on 18.4.2007 to two Allahabad Bank accounts (No. 105964 and 105965)	30.68	The transfer of fund was resulted into loss of interest for one month.
3	Allahabad Bank Account No. 105965	Rs 158 crore was transferred (25.7.2007) from the account to SBI A/c No. 30210746398 and further it was transferred (28.7.2007) to SBI A/c No. 30210763380.	46.08	The unnecessary transfer of funds in mid of the month resulted in loss of interest for one month.
4	Allahabad Bank Account No.105966	Rs 10 crore was transferred (25.7.2007) from the account to SBI A/c No. 30210746398 and further the amount was transferred (30.7.2007) to the SBI account No. 30210763380.	2.92	Resulted in loss of interest for one month.
<b>Total</b>			<b>85.71</b>	

<sup>3</sup>

*At the rate of 3.5 per cent per annum*

**APPENDIX-1.1.8**  
(Refer: Paragraph 1.1.7.3; Page - 8)

**Non-execution of basic activities of NRHM in State**  
(Rupees in Lakh)

Sl No.	Name of the activity/month in which the fund received	Amount received by the SHS	Expenditure up to March 2008
1	Upgradation of CHCs in FRUs (October 2005 and April 2006)	3080.00	Nil
2	MNGO scheme (May 2006)	472.50	Nil
3	IEC (February 2007)	22.20	Nil
4	Untied Fund for PHCs (April 2007)	412.00	Nil
5	Constitution of VHSCs (April 2007)	1000.00	Nil
6	Upgradation of District Hospitals (April 2007)	500.00	Nil
7	Annual Maintenance Grant of PHCs (April 2007)	824.00	Nil
	<b>Total</b>	<b>6310.7</b>	
8	Japanese Encephalitis	89.66	2.51
9	Training of Doctors (Anesthetic skills and emergency obstetric cases) March 2006	22.80	0.16
10	Health Mela in constituency (April 2005 and October 2006)	640.00	39.00
11	Untied Fund for Health Sub-Centres (April 2005 and May 2006)	2067.00	148.27
12	Prescription slip and other stationeries (May 2005)	40.36	10.28 (as per SOE September 2006, thereafter the activities was not mentioned)
13	Preparation of District Action Plan (May 2005 and April 2006)	380.00	51.00
14	Procurement of ASHA Kits and other medical kits (April 2006)	1843.00	100.17
15	Routine Immunization (2005-08)	4428.85	2461.87
	<b>Total</b>	<b>22133.07</b>	<b>2813.26</b>
	<b>Grand Total</b>	<b>15822.37</b>	<b>2813.26</b>

**APPENDIX– 1.1.9**  
(Refer: Paragraph 1.1.7.5; Page - 9)

**Statement of fraudulent payments under Janani Suraksha Yojana**

*(Rupees in lakh)*

Name of district	Name of PHC	No of cases having double to four time payment	Total payment under JSY (2005-09)	Fraudulent payment
Kishanganj	Pothia	22	121.85	0.35
Bhagalpur	Sahkund	24	117.16	0.58
	Sanhaulla	11	90.58	0.24
	Nathnagar	06	99.55	0.12
	Bihpur	01	37.19	0.02
	Gopalpur	10	120.34	0.20
Nalanda	Asthawan	204	43.69	4.84
Gopalganj	Baikunthpur	03	90.47	0.04
East Champaran	Areraj	10	40.95	0.17
	Paharpur	01	12.86	0.01
	Harshiddhi	01	31.16	0.01
	Ghorashan	01	68.50	0.02
	Dhaka	03	13.17	0.05
	Kalyanpur	01	29.53	0.01
<b>Total</b>		<b>298</b>	<b>917.00</b>	<b>6.66</b>



**APPENDIX-1.1.10**  
(Refer: Paragraph 1.1.8.2; Page - 12)

*Status of infrastructure in health units in selected districts*

Sl. No.	Particulars	No. of HSCs	No. of APHCs	No. of PHCs	No. of RHs
	<b>Records of Health centres checked by Audit</b>	<b>2682</b>	<b>323</b>	<b>122</b>	<b>20</b>
1	Building was not available	1837	221	16	Nil
2	Building was in a dilapidated condition	445	66	17	9
3	OPD rooms/cubicles were not available	NA	323	38	Nil
4	Separate utilities for men and women were not available	NA	323	122	16
5	Operation theatre/minor operation theatre were not available (where applicable)	NA	323	60	02
6	Outdoor facility for patient was not available	NA	134	27	3
7	Indoor facility for patient was not available	NA	323	34	3
8	Labour room was not available (where applicable)	NA	323	38	3
9	Labour room was available but not functional (where applicable)	Nil	Nil	10	3
10	Separate ward for male and female patients were not available/ non-functional (where applicable)	NA	323	122	20
11	No provision of water supply	2682	310	16	1
12	No provision for storage of water	2682	323	95	9
13	Waiting rooms for patients and Doctors were not available/not in good condition	NA	323	122	Nil
14	Accommodation facilities for Doctors were not available	NA	323	55	5
15	Accommodation facilities for staff were not available	NA	323	34	2
16	No accommodation facilities for attendants of admitted patients	NA	323	122	20
17	No standby power supply/generator	NA	233	17	3
18	No electricity connection/ power supply	2682	323	38	2
19	No facility of medical waste disposal	2682	323	122	20
20	Percentage of beds not available in the health units against sanction	NA	100	28	53
21	Citizen's Charter was not displayed prominently in local language	2682	323	122	17
22	Cleanliness was poor	1731	297	86	14
23	Suggestion/complaint box was not kept prominently	2682	323	122	17

(Source : Selected DHS and Health units, NA-Not applicable)

**APPENDIX-1.1.11**  
(Refer: Paragraph 1.1.8.3; Page - 13)

**Statement of vacancy position of health care personnel in test-checked districts**

Sl. No.	Name of District	Specialist doctor in RHs		Medical Officers in PHCs/APHCs		Staff Nurse		ANM		LHV		MHW	
		S	A	S	A	S	A	S	A	S	A	S	A
1	Bhagalpur	8	0	115	75	18	8	768	351	31	7	34	32
2	Bhojpur	8	2	90	61	18	1	758	456	24	15	106	42
3	Darbhanga	8	4	111	66	18	0	718	307	25	16	131	96
4	East Champaran	12	3	154	62	27	1	904	401	43	14	48	28
5	Gopalganj	12	2	86	65	27	2	516	230	21	7	30	3
6	Kishanganj	8	0	39	26	18	3	336	125	31	15	64	27
7	Muzaffarpur	4	2	128	92	9	2	1174	680	28	14	140	82
8	Nalanda	12	2	102	62	27	10	782	474	35	22	36	21
9	Samastipur	4	1	140	100	9	4	960	607	42	17	29	18
10	Sheikhpura	4	0	47	21	9	1	228	146	15	6	18	4
	<b>Total</b>	<b>80</b>	<b>16 (20)</b>	<b>1012</b>	<b>630 (62)</b>	<b>180</b>	<b>32 (18)</b>	<b>7144</b>	<b>3777 (53)</b>	<b>295</b>	<b>133 (45)</b>	<b>636</b>	<b>353 (56)</b>

(Source : Test-checked DHS and health units)

(Figures in bracket represent percentage of vacant post to sanctioned post)

S : Sanctioned post

A : Available man power

**APPENDIX-1.1.12**  
(Refer: Paragraph 1.1.10; Page- 17)

*Statement showing excess expenditure incurred on purchase of medicines*

*(Rupees in lakh)*

<b>Name of Districts</b>	<b>No. of medicines purchased at higher rates</b>	<b>Amount admissible as per SHS rate contract</b>	<b>Amount paid by Districts</b>	<b>Excess expenditure</b>
Gopalganj	52	46.16	116.75	70.59
East Champaran	05	0.98	1.53	0.55
Bhagalpur	30	42.27	99.01	56.74
Darbhanga	02	0.76	1.50	0.74
Purnia	61	38.79	79.96	41.17
<b>Total</b>	<b>150</b>	<b>128.96</b>	<b>298.75</b>	<b>169.79</b>

**APPENDIX– 1.1.13**  
(Refer: Paragraph 1.1.13; Page - 23)

**Statement showing villages covered for spray of DDT in test-checked districts**

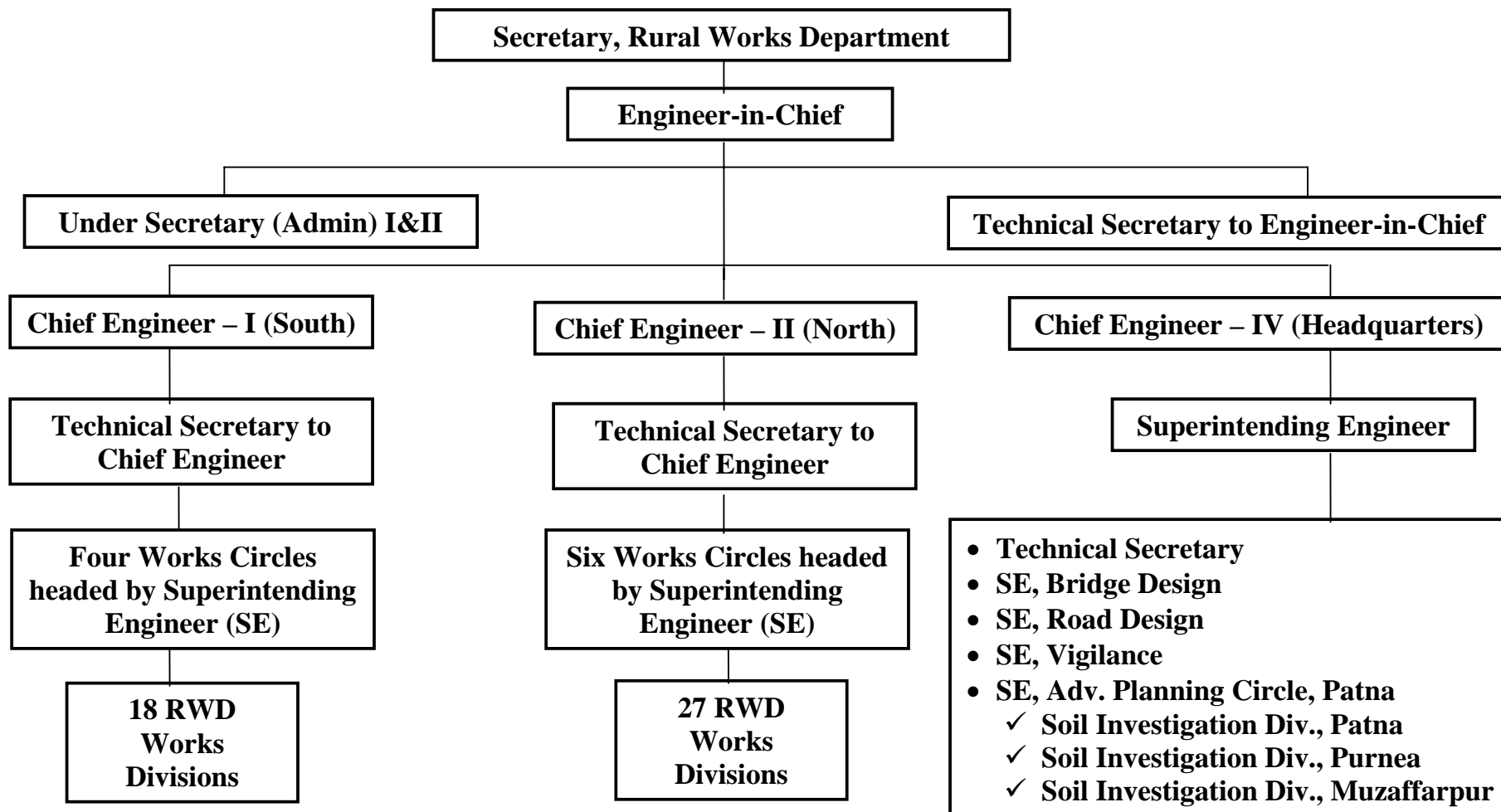
Name of the district	Year	No. of Municipal Bodies	No. of Municipal Bodies where spray was done		Frequency of spray during the year		No. of villages	No. of villages where spray was done		Frequency of spray during the year.	
			DDT	Anti-larvae solution	DDT	Anti-larvae solution		DDT	Anti-larvae solution	DDT	Anti-larvae solution
Bhojpur	2005-06	4	4	0	1	0	1244	220	0	1	0
	2006-07	4	4	0	1	0	1244	1244	0	1	0
	2007-08	4	1	0	1	0	1244	4	0	1	0
	2008-09	4	0	0	0	0	1244	28	0	01	0
Samastipur	2005-06	3	3	1	1	52	1247	804	16	1	52
	2006-07	3	3	1	1	52	1247	747	16	1	52
	2007-08	3	3	1	2	52	1247	1221	16	2	52
	2008-09	3	0	0	0	0	1247	0	0	0	0
East Champaran	2005-06	5	1	0	1	0	1716	374	0	1	0
	2006-07	5	3	0	2	0	1716	169	0	2	0
	2007-08	5	1	0	2	0	1716	22	0	2	0
	2008-09	5	0	0	0	0	1716	0	0	0	0
Kishanganj	2005-06	3	0	0	0	0	730	0	0	0	0
	2006-07	3	3	0	1	0	730	397	0	1	0
	2007-08	3	3	0	1	0	730	408	0	1	0
	2008-09	3	0	0	0	0	730	64	0	01	0
Nalanda	2005-06	3	3	0	1	0	142	142	0	1	0
	2006-07	3	3	0	1	0	159	159	0	1	0
	2007-08	3	3	0	1	0	1620	1620	0	1	0
	2008-09	3	0	0	0	0	1620	37	0	01	0
Sheikhpura	2005-06	2	0	0	0	0	268	0	0	0	0
	2006-07	2	0	0	0	0	268	0	0	0	0
	2007-08	2	0	0	0	0	268	0	0	0	0
	2008-09	2	0	0	0	0	268	0	0	0	0
Muzaffarpur	2005-06	38	7	0	1	0	1851	362	0	1	0
	2006-07	38	36	0	1	0	1851	518	0	1	0
	2007-08	42	34	0	1	0	1851	1813	0	1	0
	2008-09	42	0	0	0	0	1851	0	0	0	0
Gopalganj	2005-06	10	6	0	2	0	1499	831	0	2	0
	2006-07	10	10	0	2	0	1499	1499	0	2	0
	2007-08	10	8	0	2	0	1499	100	0	2	0

Name of the district	Year	No. of Municipal Bodies	No. of Municipal Bodies where spry was done		Frequency of spray during the year		No. of villages	No. of villages where spray was done		Frequency of spray during the year.	
			DDT	Anti-larvae solution	DDT	Anti-larvae solution		DDT	Anti-larvae solution	DDT	Anti-larvae solution
	2008-09	10	0	0	0	0	1499	119	0	01	0
Darbhanga	2005-06	0	1	0	1	0	1269	201	0	1	0
	2006-07	0	2	0	1	0	1269	138	0	1	0
	2007-08	37	17	0	1	0	1547	1153	0	1	0
	2008-09	37	0	0	0	0	1547	70	0	01	0
Bhagalpur	2005-06	4	1	0	1	0	442	442	0	1	0
	2006-07	4	3	0	1	0	780	780	0	1	0
	2007-08	4	4	0	1	0	1929	1744	0	1	0
	2008-09	4	0	0	0	0	1929	77	0	01	0
<b>Total</b>	<b>2005-06</b>	<b>72</b>	<b>26</b>	<b>1</b>			<b>10408</b>	<b>3376</b>	<b>16</b>		
	<b>2006-07</b>	<b>72</b>	<b>67</b>	<b>1</b>			<b>10763</b>	<b>5651</b>	<b>16</b>		
	<b>2007-08</b>	<b>113</b>	<b>74</b>	<b>1</b>			<b>13651</b>	<b>8085</b>	<b>16</b>		
	<b>2008-09</b>	<b>113</b>	<b>0</b>	<b>0</b>			<b>13651</b>	<b>395</b>	<b>0</b>		

**APPENDIX – 1.2.1**

(Refer: Paragraph – 1.2.2; Page - 28)

*Organisational set up for Mukhya Mantri Gram Sadak Yojana*



**APPENDIX – 1.2.2**  
(Refer: Paragraph – 1.2.6 ; Page - 29)

*Proforma ‘Ka’ and ‘Kha’ for planning and selection of roads*

*Proforma ‘Ka’ (details of villages with facility of all-weather road connectivity)*

Sl. No.	District	Block	Village	Name of road	Length	Benefited population	Present position of road (Good/Satisfactory/Bad)	Classification (NH/ SH/ MDR/ ODR/ VR)	Ownership (RCD/ REO/ ZP/ others)	Name of concerned REO works division	Name of MLA constituency and number
1	2	3	4	5	6	7	8	9	10	11	12

*Proforma ‘Kha’ (details of villages without facility of all-weather road connectivity)*

Sl. No.	District	Block	Village	Name of road	Length	Benefited population	Habitations to be connected	Present position of road (Good/Satisfactory/Bad)	Classification (NH/ SH/ MDR/ ODR/ VR)	Ownership (RCD/ REO/ ZP/ others)	Estimated cost (Rupees in lakh)	Whether land is available or required to acquire	Name of concerned REO works division	Name of MLA constituency and number
1	2	3	4	5	6	7	8	9	10	11	12	13	14	15

**APPENDIX – 1.2.3**  
(Refer: Paragraph-1.2.6; Page - 30)

**Priority criteria for selection of roads under Mukhya Mantri Gram Sadak Yojana**

<b>Population of unconnected village/ habitation (Total : 70 marks)</b>		<b>Population of SC/ST (percentage of SC/ST compared to total population) (Total : 20 marks)</b>		<b>Length of road from unconnected village to existing road (Total : 10 marks)</b>	
<b>Population</b>	<b>Marks</b>	<b>Percentage</b>	<b>Marks</b>	<b>Length</b>	<b>Marks</b>
900 to 999	70	5 to 30	5	Over 4 km	10
800 to 899	65	30 to 50	10	3 km to 4 km	8
700 to 799	60	50 to 75	15	2 km to 3 km	6
600 to 699	55	75 to 100	20	1 km to 2 km	4
500 to 599	50			1 km and less	2



**APPENDIX – 1.2.4**  
(Refer: Paragraph – 1.2.7; Page - 32)

**Statement showing budget allocation, funds released and expenditure incurred**

*(Rupees in crore)*

Sl. No.	Name of District	Name of Division	Year	Budget allocation/ Target of expenditure	Opening balance with Division	Fund released by BRRDA	Total fund available with Division (6+7)	Expenditure (percentage of funds available)	Saving (+)/ Excess (-)
(1)	(2)	(3)	(4)	(5)	(6)	(7)	(8)	(9)	(10)
1	Bhojpur	Ara	2006-07	7.64	0.00	3.82	3.82	1.38(36)	2.44
			2007-08	14.18	2.44	10.82	13.26	10.18(77)	3.08
			2008-09	12.04	3.08	15.00	18.08	17.95 (99)	0.13
			<b>Total</b>	<b>33.86</b>		<b>29.64</b>	<b>35.16</b>	<b>29.51 (84)</b>	
2	Aurangabad	Aurangabad	2006-07	9.69	0.00	4.85	4.85	0.17(4)	4.68
			2007-08	18.60	4.68	14.00	18.68	12.73(68)	5.95
			2008-09	15.28	5.95	0.00	5.95	5.91(99)	0.04
			<b>Total</b>	<b>43.57</b>		<b>18.85</b>	<b>29.48</b>	<b>18.81(64)</b>	
3	Saran	Chapra	2006-07	9.68	0.00	4.84	4.84	0.00	4.84
			2007-08	18.75	4.84	5.00	9.84	7.32(74)	2.52
			2008-09	15.26	2.52	15.50	18.02	16.52(92)	1.50
			<b>Total</b>	<b>43.69</b>		<b>25.34</b>	<b>32.70</b>	<b>23.84(73)</b>	
4	Vaishali	Hajipur	2006-07	9.72	0.00	4.86	4.86	4.86(100)	0.00
			2007-08	18.51	0.00	20.86	20.86	15.05(72)	5.81
			2008-09	15.33	5.81	0.00	5.81	4.43(76)	1.38
			<b>Total</b>	<b>43.56</b>		<b>25.72</b>	<b>31.53</b>	<b>24.34(77)</b>	
5	Jehanabad	Jehanabad	2006-07	3.35	0.00	2.86	2.86	0.30(10)	2.56
			2007-08	7.47	2.56	8.50	11.06	9.54 (86)	1.52
			2008-09	5.28	1.52	9.50	11.02	10.75 (98)	0.27
			<b>Total</b>	<b>16.10</b>		<b>20.86</b>	<b>24.94</b>	<b>20.59 (83)</b>	
6	Kishanganj	Kishanganj	2006-07	4.59	0.00	2.30	2.30	1.79(78)	0.51
			2007-08	8.72	0.51	7.50	8.01	6.25(78)	1.76
			2008-09	7.24	1.76	3.50	5.26	3.08(59)	2.18
			<b>Total</b>	<b>20.55</b>		<b>13.30</b>	<b>15.57</b>	<b>11.12(71)</b>	
7	Madhubani	Madhubani	2006-07	12.10	0.00	2.02	2.02	0.14 (7)	1.88
			2007-08	23.27	1.88	10.00	11.88	7.25 (61)	4.63
			2008-09	19.08	4.63	3.00	7.63	7.25 (95)	0.38
			<b>Total</b>	<b>54.45</b>		<b>15.02</b>	<b>21.53</b>	<b>14.64 (68)</b>	
7	Madhubani	Jhanjharpur	2006-07	0	0.00	2.02	2.02	1.00 (50)	1.02
			2007-08	0	1.02	4.00	5.02	3.75 (75)	1.27
			2008-09	0	1.27	2.00	3.27	0.71 (22)	2.56
			<b>Total</b>			<b>8.02</b>	<b>10.31</b>	<b>5.46 (53)</b>	

Sl. No.	Name of District	Name of Division	Year	Budget allocation/ Target of expenditure	Opening balance with Division	Fund released by BRRDA	Total fund available with Division (6+7)	Expenditure (percentage of funds available)	Saving (+)/ Excess (-)
(1)	(2)	(3)	(4)	(5)	(6)	(7)	(8)	(9)	(10)
7	Madhubani	Benipatti	2006-07	0	0.00	2.02	2.02	0	2.02
			2007-08	0	2.02	0	2.02	1.76 (87)	0.26
			2008-09	0	0.26	2.00	2.26	1.15 (51)	1.11
			<b>Total</b>		<b>2.28</b>	<b>4.02</b>	<b>6.30</b>	<b>2.91 (46)</b>	
8	East Champaran	Motihari	2006-07	13.39	0.00	3.35	3.35	3.35 (100)	0.00
			2007-08	25.75	0.00	19.35	19.35	18.07 (93)	1.28
			2008-09	21.11	1.28	3.00	4.28	4.22 (100)	0.06
			<b>Total</b>	<b>60.25</b>		<b>25.70</b>	<b>26.98</b>	<b>25.64 (95)</b>	
8	East Champaran	Dhaka	2006-07	-	0.00	3.35	3.35	1.10 (33)	2.25
			2007-08	-	2.25	6.00	8.25	7.11 (86)	1.14
			2008-09	-	1.14	1.00	2.14	1.88 (88)	0.26
			<b>Total</b>			<b>10.35</b>	<b>13.74</b>	<b>10.09 (73)</b>	
9	Munger	Munger	2006-07	3.72	0.00	1.86	1.86	0.05(3)	1.81
			2007-08	7.56	1.81	4.50	6.31	5.54(88)	0.77
			2008-09	5.87	0.77	2.50	3.27	2.43(74)	0.84
			<b>Total</b>	<b>17.15</b>		<b>8.86</b>	<b>11.44</b>	<b>8.02(70)</b>	
10	Nalanda	Biharshariff	2006-07	8.67	0.00	2.17	2.17	0	2.17
			2007-08	16.50	2.17	5.00	7.17	5.30 (74)	1.87
			2008-09	13.67	1.87	3.50	5.37	3.67 (68)	1.70
			<b>Total</b>	<b>38.84</b>		<b>10.67</b>	<b>14.71</b>	<b>8.97 (61)</b>	
10	Nalanda	Hilsa	2006-07	0	0.00	2.17	2.17	0.35 (16)	1.82
			2007-08	0	1.82	5.73	7.55	5.24 (69)	2.31
			2008-09	0	2.31	0.50	2.81	1.49 (53)	1.31
			<b>Total</b>			<b>8.40</b>	<b>12.53</b>	<b>7.08 (57)</b>	
11	Samastipur	Samastipur	2006-07	11.99	0.00	2.99	2.99	0.60 (20)	2.39
			2007-08	22.25	2.39	4.50	6.89	6.39 (93)	0.50
			2008-09	18.91	0.50	5.70	6.25	5.76 (92)	0.49
			<b>Total</b>	<b>53.15</b>		<b>13.19</b>	<b>16.13</b>	<b>12.75 (79)</b>	
11	Samastipur	Rosera	2006-07	-	0.00	2.99	2.99	0.26 (89)	2.73
			2007-08	-	2.73	3.50	6.23	6.03 (97)	0.20
			2008-09	-	0.20	5.20	5.40	4.14 (77)	1.26
			<b>Total</b>			<b>11.69</b>	<b>14.62</b>	<b>10.43 (71)</b>	
12	Supual	Supaul	2006-07	7.47	0.00	3.73	3.73	0.00	3.73
			2007-08	14.34	3.73	2.00	5.73	5.73(100)	0.00
			2008-09	11.78	0.00	10.00	10.00	7.78(78)	2.22
			<b>Total</b>	<b>33.59</b>		<b>15.73</b>	<b>19.46</b>	<b>13.51(69)</b>	<b>2.22</b>
	<b>Total</b>		<b>2006-07</b>	<b>102.01</b>	<b>0.00</b>	<b>52.20</b>	<b>52.20</b>	<b>15.35 (29)</b>	<b>36.85</b>
			<b>2007-08</b>	<b>195.90</b>	<b>36.85</b>	<b>131.26</b>	<b>168.11</b>	<b>133.24 (79)</b>	<b>34.87</b>
			<b>2008-09</b>	<b>160.85</b>	<b>34.87</b>	<b>81.90</b>	<b>116.82</b>	<b>99.12 (86)</b>	<b>17.69</b>
	<b>Grand Total</b>			<b>458.76</b>		<b>265.36</b>		<b>247.71</b>	

(Source : Rural Works Department)

**APPENDIX – 1.2.5**  
(Refer: Paragraph – 1.2.8.1; Page - 34)

**Statement showing physical progress of road works**

(Rupees in crore)

Sl. No.	Name of Division	Year	Number of roads test-checked	Physical status (As of March 2009)		Expenditure (As of March 2009)	
				Complete	Incomplete	Complete	Incomplete
1	Aurangabad	2006-07	08	03	05	4.08	6.77
2	Ara	2006-07	10	10	00	9.35	0.00
3	Jehanabad	2006-07	06	06	00	3.83	0.00
		2007-08	04	01	03	0.38	1.94
4	Kishanganj	2006-07	06	05	01	5.37	1.78
5	Madhubani	2006-07	10	06	04	7.50	5.85
6	Benipatti	2006-07	03	00	03	0.00	3.08
7	Jhanjharpur	2006-07	05	03	02	3.09	1.88
8	Motihari	2006-07	06	04	02	5.41	2.52
9	Dhaka	2006-07	08	08	00	10.10	0.00
10	Munger	2006-07	05	02	03	1.01	1.94
11	Biharshariff	2006-07	07	00	07	0.00	4.93
12	Hilsa	2006-07	10	06	04	3.46	3.48
		2007-08	01	00	01	0.00	0.13
13	Samastipur	2006-07	09	05	04	2.89	3.81
		2007-08	03	02	01	2.04	1.86
14	Rosera	2006-07	11	06	05	5.55	5.24
15	Chapra	2006-07	16	04	12	4.89	10.21
		2007-08	07	00	07	0.00	5.33
16	Supaul	2006-07	05	01	04	1.39	2.04
17	Hajipur	2006-07	07	06	01	6.80	0.83
	<b>Total</b>	<b>2006-07</b>	<b>132</b>	<b>75</b>	<b>57</b>	<b>74.72</b>	<b>54.36</b>
		<b>2007-08</b>	<b>15</b>	<b>03</b>	<b>12</b>	<b>2.42</b>	<b>9.26</b>
	<b>Grand Total</b>		<b>147</b>	<b>78</b>	<b>69</b>	<b>77.14</b>	<b>63.62</b>

**APPENDIX – 1.2.6**  
*(Refer: Paragraph -1.2.8.2 ; Page - 34)*

**Statement showing incomplete roads**

Sl. No.	Name of Division	Number of roads	Expenditure (Rupees in crore)
1	Aurangabad	19	14.07
2	Ara	04	2.20
3	Motihari	03	3.44
4	Jehanabad	01	0.72
5	Kishanganj	01	1.70
6	Madhubani	10	9.41
7	Jhanjharpur	03	1.86
8	Benipatti	03	2.92
9	Munger	09	6.26
10	Biharshariff	08	4.60
11	Hilsa	02	1.46
12	Samastipur	04	3.81
13	Rosera	05	1.92
14	Chapra	16	13.64
15	Supaul	10	6.73
16	Hajipur	04	3.44
	<b>Total</b>	<b>102</b>	<b>78.18</b>

**APPENDIX – 1.2.7**  
(Refer: Paragraph -1.2.8.3 ; Page - 35)

**Statement showing allotment of more than one work to the same contractors**

**(Rupees in crore)**

Sl. No.	Name of agency	Name of Division	No. of works allotted	Period of Agreement	Agreement value	Payment made to contractor	No. of incomplete roads	Agreement Value of incomplete roads	Expenditure of incomplete roads
1	M/s Alam & Co.	Munger	5	03/07 to 07/07	4.41	4.05	3	3.30	2.98
2	M/s Anil Kr. Singh	Samastipur	3	06/07	8.68	5.44	3	8.68	5.44
3	M/s Ashok Kr. & Brothers	Madhubani	5	03/07 to 08/07	7.94	6.31	3	6.23	4.76
4	M/s Hari Om Construction	Aurangabad	4	03/07 to 06/07	2.76	1.85	3	2.58	1.68
5	M/s Madan Pd. Sinha	Aurangabad	3	05/07 to 02/09	3.66	2.16	3	3.66	2.16
6	M/s Magadh Eng. Works	Jehanabad	3	11/08 to 01/09	2.71	0.91	3	2.71	0.91
7	M/s Prahlad Kumar Singh	Munger, Jehanabad, Motihari	3	03/07 to 01/09	1.90	1.37	2	1.45	0.93
8	M/s Pramod Nr. Sinha	Biharsharif	2	03/07 to 04/07	0.92	1.13	2	1.90	0.71
9	M/s R. K. Const.	Jehanabad	3	11/08 to 12/08	1.28	0.61	3	1.28	0.61
10	M/s Ramsagar Jha & Co.	Samastipur	3	04/07 to 10/08	6.38	4.62	2	4.47	2.81
11	M/s Ramvilash Purvey	Madhubani	7	02/07 to 10/08	13.77	11.80	4	9.72	8.01
12	M/s S. K. Enterprises	Samastipur & Rosera	5	03/07 to 05/07	10.22	6.03	3	8.29	4.36
13	M/s Shiv Narayan Singh	Aurangabad	2	03/07 to 06/07	2.43	1.37	2	2.43	1.37
14	M/s Sunny Engineering Works	Aurangabad	10	03/07 to 05/07	15.27	13.38	2	8.71	7.02
15	M/s Tirupati Construction	Aurangabad	2	03/07 to 06/07	4.31	3.30	1	3.21	2.35
16	R. L. Choudhary & Co.	Samastipur	2	03/07	3.15	2.44	1	2.41	1.78
17	Sri Devendra Jha	Benipatti	2	03/07	3.02	2.08	2	3.02	2.08
18	Sri Kumar Saroj	Biharsharif	4	02/07 to 05/07	3.83	3.77	3	2.65	1.91
19	Sri Ram Naresh Singh	Aurangabad	3	06/07	2.91	1.22	3	2.91	1.22
20	Sri Sanjay Choudhary	Munger	2	02/09	0.88	0.18	2	0.88	0.18
21	Sri Sanjay Kr. Singh	Biharsharif	2	4/09 to 6/09	0.33	0.39	2	0.91	0.39
22	Sri Santosh Kumar	Biharsharif	2	05/07	1.89	0.68	2	1.89	0.68
23	Systemetic & Adv. Const.	Jehanabad	2	12/08	3.30	1.12	2	3.30	1.12
	<b>Total</b>		<b>79</b>		<b>105.95</b>	<b>76.21</b>	<b>56</b>	<b>86.59</b>	<b>55.46</b>

**APPENDIX – 1.2.8**

(Refer: Paragraph – 1.2.8.4 ; Page - 35)

**Statement showing non-recovery of penalty and undue aid to contractors**

(Rupees in lakh)

Name of Division	Sl. No.	Agreement No. (F <sub>2</sub> )/ Year	Stipulated date of completion	Agreement value	Amount as compensation to be deducted	Amount of compensation deducted	Month upto which compensation deducted for time extension
RWD Works Division, Madhubani	1	83/2006-07	13.12.2007	248.93	24.89	5.49	November 2008
	2	10/2007-08	01.02.2008	82.69	8.27	1.73	March 2009
	3	12/2007-08	13.09.2007	87.89	8.79	4.70	May 2008
	4	15/2007-08	09.07.2008	168.11	16.81	1.64	July 2009
	5	16/2007-08	18.03.2008	84.26	8.43	1.99	June 2009
	6	04/2007-08	08.03.2008	146.79	14.68	1.00	March 2009
	7	82/2006-07	06.12.2007	182.14	18.21	8.09	January 2009
<b>Total</b>					<b>100.08</b>	<b>24.64</b>	
RWD Works Division, Benipatti	8	66/2006-07	15.12.2007	198.35	19.84	11.19	May 2009
	9	67/2006-07	29.09.2007	103.61	10.36	3.41	March 2009
	10	01/2007-08	21.02.2008	149.11	14.91	3.68	May 2008
<b>Total</b>					<b>45.11</b>	<b>18.28</b>	
RWD Works Division, Dhaka	11	61/2006-07	19.08.2007	142.99	14.30	4.69	October 2008
	12	62/2006-07	13.08.2007	66.51	6.65	3.62	June 2008
	13	65/2006-07	14.08.2007	131.34	13.13	2.82	February 2008
	14	84/2006-07	14.09.2007	118.47	11.85	7.84	August 2008
	15	85/2006-07	26.12.2007	227.99	22.80	13.31	June 2008
<b>Total</b>					<b>68.73</b>	<b>32.28</b>	
RWD Works Division, Samastipur	16	53/2006-07	05.09.2007	79.70	7.97	3.77	August 2008
	17	45/2006-07	22.08.2007	53.20	5.32	2.69	May 2008
	18	47/2006-07	22.08.2007	81.20	8.12	3.22	March 2009
	19	46/2006-07	22.08.2007	85.60	8.56	3.66	March 2009
	20	01/2007-08	24.01.2008	141.60	14.16	7.76	June 2009
<b>Total</b>					<b>44.13</b>	<b>21.10</b>	
RWD Works Division, Rosera	21	73/2006-07	22.09.2007	39.28	3.93	0.00	
	22	74/2006-07	21.09.2007	67.18	6.72	0.00	
	23	01/2007-08	08.01.2008	190.57	19.06	0.00	
	24	10/2007-08	08.06.2008	323.66	32.37	0.00	
<b>Total</b>					<b>62.08</b>	<b>0.00</b>	
RWD Works Division, Biharsharif	25	65/2006-07	25.08.2007	118.00	11.80	0.00	
	26	82/2006-07	15.09.2007	45.90	4.59	0.00	
	27	01/2007-08	15.10.2007	105.11	10.51	0.00	
	28	03/2007-08	26.10.2007	160.21	16.02	0.00	
	29	05/2007-08	08.11.2007	98.85	9.89	0.00	
	30	08/2007-08	09.11.2007	146.59	14.66	0.00	
31	09/2007-08	14.11.2007	145.89	14.59	0.00		
<b>Total</b>					<b>82.06</b>	<b>0.00</b>	
RWD Works Division, Hilsa	32	49/2006-07	05.08.2007	37.62	3.76	0.00	
	33	51/2006-07	06.08.2007	58.31	5.83	0.00	
	34	53/2006-07	06.08.2007	64.15	6.42	0.00	
	35	60/2006-07	15.09.2007	157.94	15.79	0.00	
	36	63/2006-07	21.09.2007	96.45	9.65	0.00	
	37	07/2007-08	24.11.2007	30.04	3.00	0.00	
<b>Total</b>					<b>44.45</b>	<b>0.00</b>	
<b>Grand Total</b>					<b>446.63</b>	<b>96.30</b>	

**APPENDIX – 1.2.9***(Refer: Paragraph – 1.2.9.1 (A) ; Page - 36)***Statement showing delayed bitumenous surfacing works**

Name of Division	Sl. No.	Agreement No./Year	Qty. of Gr. III exec.	Date of exec.	Rate	Value (Rs in lakh)	Date of surfacing	Value (Rs in lakh)	Total (Rs in lakh) (7+9)
1	2	3	4	5	6	7	8	9	10
RWD Works Division, Madhubani	1	11/06-07	666.54	30.3.08	2712.24	18.08	15.1.09	16.35	34.43
	2	5/07-08	1157.90	25.2.08	2796.99	32.39	25.11.08	28.74	61.13
	3	83/06-07	2254.87	18.4.08	2519.55	56.81	26.08.08	23.70	80.51
	4	1/07-08	928.64	10.8.08	2519.54	23.40	27.6.09	20.73	44.13
	5	10/07-08	759.37	1.2.08	2403.94	18.25	28.11.08	16.80	35.05
	6	15/07-08	1290.89	15.6.08	2581.20	33.32	20.7.09	16.35	49.67
<b>Total</b>	<b>6</b>					<b>182.25</b>		<b>122.67</b>	<b>304.92</b>
RWD Works Division, Dhaka	1	3/07-08	438.31	25.10.07	2392.45	10.49	20.3.08	21.10	31.59
	2	5/07-08	1265.62	15.1.08	1265.62	16.02	11.5.08	60.33	76.35
	3	61/06-07	506.05	28.6.07	2368.20	11.98	3.6.08	28.49	40.47
	4	62/06-07	491.84	29.12.07	2311.65	11.37	13.5.08	22.59	33.96
	5	65/06-07	885.48	2.8.07	2368.20	20.97	3.12.07	44.27	65.24
	6	84/06-07	1124.99	18.2.08	2068.70	23.27	14.8.08	50.37	73.64
	7	85/06-07	1243.13	18.2.08	2300.35	28.60	10.6.08	65.97	94.57
	8	04/07-08	682.09	29.12.07	2311.65	15.77	30.5.08	32.85	48.62
<b>Total</b>	<b>8</b>					<b>138.47</b>		<b>325.97</b>	<b>464.44</b>
RWD Works Division, Hilsa	1	49/06-07	281.25	5.8.07	1486.26	4.18	10.3.08	4.13	8.31
	2	53/06-07	730.78	8.6.07	1542.30	11.27	15.5.08	11.27	22.54
	3	60/06-07	893.74	19.6.08	1296.04	11.58	16.2.09	14.61	26.19
	4	63/06-07	803.25	5.7.08	1483.19	11.91	6.7.09	13.37	25.28
	5	7/07-08	232.03	7.12.07	1094.86	2.54	28.3.08	3.92	6.46
<b>Total</b>	<b>5</b>					<b>41.48</b>		<b>47.30</b>	<b>88.78</b>
RWD Works Division, Samastipur	1	47/06-07	477.30	28.2.08	2080.24	9.93	28.3.09	10.77	20.70
	2	1/07-08	1232.86	30.4.08	2129.32	26.25	12.6.09	28.99	55.24
<b>Total</b>	<b>2</b>					<b>36.18</b>		<b>39.76</b>	<b>75.94</b>
RWD Works Division, Rosera	1	24/06-07	562.73	26.3.08	2166.22	12.19	17.12.08	12.80	24.99
	2	1/07-08	1700.22	20.6.08	1803.53	30.66	16.10.08	36.94	67.60
<b>Total</b>	<b>2</b>					<b>42.85</b>		<b>49.74</b>	<b>92.59</b>
<b>Grand total</b>	<b>23</b>					<b>441.23</b>		<b>585.44</b>	<b>1026.67</b>

**APPENDIX – 1.2.10**  
(Refer: Paragraph –1.2.9.2 ; Page - 37)

**Statement showing irregular payment without ensuring quantity and specifications**

Name of Division	Sl. No.	Agreement No./Year	Qty. of Gr. III exec. (Cum.)	Rate (Rs)	Value (Rs in lakh)	Qty. of Gr. II exec. (Cum.)	Rate (RS)	Value (Rs in lakh)	Total (Rs in lakh) (6+9)
(1)	(2)	(3)	(4)	(5)	(6)	(7)	(8)	(9)	(10)
RWD Works Division, Madhubani	1	11/06-07	666.54	2712.24	18.08	666.56	2772.77	18.48	36.56
	2	05/07-08	1171.91	2796.99	32.78	1171.91	2864.50	33.57	66.35
	3	83/06-07	2254.87	2519.55	56.81	2086.74	2564.25	53.51	110.32
	4	01/07-08	928.64	2519.54	23.40	928.64	2564.25	23.81	47.21
	5	10/07-08	759.37	2403.94	18.25	759.37	2439.16	18.52	36.78
	6	15/07-08	1290.89	2581.20	33.32	1290.89	2219.11	28.65	61.97
<b>Total</b>					<b>182.64</b>			<b>176.54</b>	<b>359.19</b>
RWD Works Division, Benipatti	1	01/07-08	1012.50	2650.56	26.84	0.00	0.00	0.00	26.84
<b>Total</b>					<b>26.84</b>			<b>0.00</b>	<b>26.84</b>
RWD Works Division, Dhaka	1	03/07-08	438.31	2392.45	10.49	438.31	2400.42	10.52	21.01
	2	05/07-08	1265.62	1265.62	16.02	1265.62	2313.00	29.27	45.29
	3	61/06-07	590.41	2368.20	13.98	590.41	2373.90	14.02	28.00
	4	62/06-07	491.84	2311.65	11.37	492.01	2312.70	11.38	22.75
	5	65/06-07	885.48	2368.20	20.97	908.03	2373.85	21.56	42.53
	6	84/06-07	1124.99	2068.70	23.27	1124.99	2056.80	23.14	46.41
	7	85/06-07	1243.13	2300.35	28.60	1402.03	2307.60	32.35	60.95
	8	04/07-08	682.09	2311.65	15.77	688.96	2312.70	15.93	31.70
<b>Total</b>					<b>140.47</b>			<b>158.17</b>	<b>298.64</b>
RWD Works Division, Biharsharif	1	03/07-08	1125.32	1333.97	15.01	1195.65	1296.04	15.50	30.51
	2	05/07-08	900.00	1147.50	10.33	1012.50	1296.04	13.12	23.45
	3	08/07-08	750.94	1649.53	12.39	885.94	1296.04	11.48	23.87
	4	09/07-08	1124.93	1606.50	18.07	1335.85	1296.04	17.31	35.39
<b>Total</b>					<b>55.80</b>			<b>57.41</b>	<b>113.22</b>
RWD Works Division, Hilsa	1	49/06-07	281.25	1486.26	4.18	281.25	1502.45	4.23	8.41
	2	51/06-07	466.88	1582.79	7.39	466.88	1582.79	7.39	14.78
	3	53/06-07	730.78	1542.30	11.27	731.53	1542.30	11.28	22.55
	4	60/06-07	893.74	1296.04	11.58	942.17	1296.04	12.21	23.79
	5	63/06-07	803.25	1483.19	11.91	843.75	1483.19	12.51	24.43
	6	07/07-08	232.03	1094.86	2.54	232.03	1056.86	2.45	4.99
<b>Total</b>					<b>48.87</b>			<b>50.07</b>	<b>98.95</b>
RWD Works Division, Chapra	1	38/07-08	285.00	1723.00	4.91	758.66	1792.86	13.60	18.51
	2	18/08-09	1124.81	2310.16	25.98	1012.78	2505.56	25.38	51.36
	3	30/07-08	727.81	1854.33	13.50	727.81	1886.36	13.73	27.23
	4	33/07-08	1802.25	1849.81	33.34	1802.25	1908.21	34.39	67.73
	5	22/07-08	1124.81	1794.78	20.19	1124.81	1846.92	20.77	40.96
	6	25/07-08	1757.14	1732.56	30.44	1757.14	1774.92	31.19	61.63
	7	34/07-08	2404.51	1854.28	44.59	2404.51	1913.69	46.01	90.60
<b>Total</b>					<b>172.95</b>			<b>185.07</b>	<b>358.02</b>
RWD Works Division, Samastipur	1	53/06-07	624.38	2043.61	12.76	624.38	2055.01	12.83	25.59
	2	47/06-07	477.30	2080.24	9.93	477.30	2089.11	9.97	19.90
	3	01/07-08	1232.86	2129.32	26.25	1232.86	2122.72	26.17	52.42
	4	46/06-07	582.19	2113.29	12.30	582.19	2105.93	12.26	24.56
<b>Total</b>					<b>61.24</b>			<b>61.23</b>	<b>122.47</b>
RWD Works Division, Rosera	1	73/06-07	373.71	2167.45	8.10	374.04	2105.93	7.88	15.98
	2	24/06-07	562.73	2166.22	12.19	562.73	2122.72	11.95	24.14
	3	01/07-08	1700.22	1803.53	30.66	1700.22	1799.98	30.60	61.27
<b>Total</b>					<b>50.95</b>			<b>50.43</b>	<b>101.39</b>
<b>Grand total</b>					<b>739.76</b>			<b>738.92</b>	<b>1478.71</b>



**APPENDIX – 1.2.11***(Refer: Paragraph – 1.2.9.3 ; Page - 37)***Details of irregular payments without verification of bitumen challans**

Sl. No.	Name of District/ Division	Agreement No./ Year	Item of bituminous work executed	Quantity of bituminous work executed (Sq.m)	Quantity of bitumen required per Sq.m (Kg)	Bitumen required to execute the bituminous work (MT)	Challan produced by the contractor in support of bitumen lifted (MT)	Difference (MT)	Value (@ 22189.01/ MT) (Rs. In lakh)
1	Kishanganj/ RWD Works Division, Kishanganj	30/2006-07	Primer coat	11250.00	0.60	6.750	18.15	16.05	3.56
			20 mm Premix	11250.00	1.46	16.425			
			Seal coat	11250.00	0.98	11.025			
						<b>34.200</b>			
		27/2006-07	Primer coat	17033.43	0.60	10.220	36.31	15.47	3.43
			20 mm Premix	17033.43	1.46	24.869			
Seal coat	17033.43		0.98	16.693					
					<b>51.782</b>				
2	Bhojpur/ RWD works Division, Ara	08/2007-08	BuSG	20126.25	3.00	60.379	99.50	14.01	3.11
			Tack coat	20126.25	0.20	4.025			
			20 mm Premix	20126.25	1.46	29.384			
			Seal coat	20126.25	0.98	19.724			
						<b>113.512</b>			
		02/2008-09	BuSG	8082.50	3.00	24.248	17.94	30.66	6.80
			Tack coat	9226.25	0.20	1.845			
			20 mm Premix	9226.25	1.46	13.470			
Seal coat	9226.25		0.98	9.042					
					<b>48.605</b>				
3	Supaul/ RWD Works Division, Supaul	06/2007-08	Primer coat	36750.00	0.60	22.050	108.92	10.15	2.25
			Tack coat	36750.00	0.20	7.350			
			20 mm Premix	36750.00	1.46	53.655			
			Seal coat	36750.00	0.98	36.015			
							<b>119.070</b>		
4	Nalanda/ RWD Works Division, Hilsa	51/2006-07	Primer coat	6303.75	0.60	3.782	12.05	2.20	0.49
			Tack coat	6303.75	0.20	1.261			
			20 mm Premix	6303.75	1.46	9.203			
							<b>14.246</b>		
		53/2006-07	Primer coat	8625.00	0.60	5.175	15.47	4.02	0.89
			Tack coat	8625.00	0.20	1.725			
			20 mm Premix	8625.00	1.46	12.593			
					19.493				
<b>Total</b>						<b>400.908</b>	<b>308.34</b>	<b>92.56</b>	<b>20.53</b>

*(Source : RWD Works Divisions)*

**APPENDIX- 1.3.1**

*(Refer: Paragraphs 1.3.1 and 1.3.4.1; Page- 41 & 44)*

**Statement of funds released, expenditure incurred and balances under RSVY**

*(Rupees in crore)*

Sl. No.	Name of District	Allotment on GOI release i.e. total allotment	Number of Sectors	Number of approved schemes	Total approved amount	Flow to SCP	Number of scheme sanctioned	Total sanctioned amount	Total release	Actual expenditure	Physical achievement (in number)			Required balance in district (3-11) and percentage of total allotment (15/3)	Balance shown in district	Less exhibiton of balance (15-16)
											Complete	On going	Not started			
1	2	3	4	5	6	7	8	9	10	11	12	13	14	15	16	17
1	Gaya \$	45	8	1469	45	7.77	1366	45.50	30.84	34.64	1084 (74%)	283	102	10.36 (23%)	14.16	-3.8
2	Jahanabad \$	45	15	897	45	3.06	892	44.68	38.49	34.59	490 (55%)	404	03	10.41 (23%)	6.51	3.9
3	Aurangabad	45	13	205	45	7.84	201	44.68	37.46	33.50	140 (68%)	54	11	11.50 (26%)	7.54	3.96
4	Nawada	45	13	513	45	10.87	505	44.72	33.91	34.52	289 (56%)	204	20	10.48 (23%)	11.09	-0.61
5	Patna	45	10	672	45	7.21	642	45.02	44.28	39.27	506 (75%)	136	30	5.73 (13%)	0.72	5.01
6	Nalanda	37.5	14	388	46	6.82	384	45.28	38.38	34.71	311 (80%)	73	04	2.79 (07%)	(-)0.88	3.67
7	Bhojpur*	45	10	482	46	6.05	482	45.12	38.06	36.78	293 (61%)	189	00	8.22 (18%)	6.94	1.28
8	Rohtas \$	45	16	711	45	9.07	711	44.44	35.28	29.73	366 (51%)	399	55	15.27 (34%)	9.72	5.55
9	Kaimur	45	14	392	45	7.59	391	44.86	37.30	34.54	320 (82%)	71	01	10.46 (23%)	7.70	2.76
10	Muzaffarpur	45	12	612	45	7.1	612	45.00	36.51	34.60	337 (55%)	275	00	10.40 (23%)	8.49	1.91
11	Vaishali	45	11	190	45	5.54	189	45.10	36.71	34.51	154 (81%)	34	02	10.49 (23%)	8.29	2.2
12	Sheohar*	37.5	10	305	45	5.37	291	43.44	24.70	34.52	108 (35%)	183	14	2.98 (08%)	12.80	-9.82
13	Darbhanga*	45	13	286	45	7.16	278	44.89	37.50	34.66	208 (73%)	70	08	10.34 (23%)	7.50	2.84
14	Madhubani	45	11	689	45	8.32	683	44.25	32.47	34.53	255 (37%)	428	06	10.47 (23%)	12.53	-2.06
15	Samastipur	45	15	384	46	4.37	384	45.49	37.30	34.53	233 (61%)	151	00	10.47 (23%)	7.70	2.77
16	Supaul	45	14	329	45	0	329	45.42	37.52	34.53	206 (63%)	123	00	10.47 (23%)	7.48	2.99
17	Purnia	45	10	320	45	7.3	320	45.00	36.30	35.84	170 (53%)	150	00	9.16 (20%)	8.70	0.46
18	Katihar	45	12	775	45	7.08	775	44.98	37.07	38.31	534 (69%)	241	00	6.69 (15%)	7.93	-1.24
19	Araria	37.5	10	372	45	2.6	370	44.77	36.05	27.08	105 (28%)	265	02	10.42 (28%)	1.45	8.97
20	Jamui	45	13	761	45	6.22	761	45.00	37.35	34.50	420 (55%)	341	00	10.50 (23%)	7.65	2.85
21	Lakhisarai	45	14	263	45	4.14	263	45.04	35.21	34.54	122 (46%)	128	13	10.46 (23%)	9.79	0.67
	<b>Total</b>	<b>922.5</b>	<b>258</b>	<b>11015</b>	<b>948</b>	<b>131.48</b>	<b>10829</b>	<b>942.68</b>	<b>758.69</b>	<b>724.43</b>	<b>6651(60%)</b>	<b>4202</b>	<b>271</b>	<b>198.07(21%)</b>	<b>163.81</b>	<b>34.26</b>

Notes: (1)\*Differs from district progress report,

(2) \$ Total of complete and ongoing schemes does not tally to the total sanctioned schemes

**APPENDIX-1.3.2***(Refer: Paragraph 1.3.4.2; Page- 44)**Details of works taken up outside the scope of RSVY*

Sl. No.	Name of districts	Nature of work	Number of works	Amount incurred (Rs in crore)
1	Araria, Bhojpur, Gaya, Jamui, Muzaffarpur, Sheohar	Police morchas, compound walls and barbed wire fencing	100	5.94 <sup>2</sup>
2	Gaya, Muzaffarpur	Repairs	20	4.25 <sup>3</sup>
3	Darbhangha, Muzaffarpur,	Construction of health, veterinary, anganwadis and educational buildings without staff, requisite equipment	56	2.74 <sup>4</sup>
4	Bhojpur, Sheohar,	Construction / renewal of administrative building and its approach roads	06	0.82 <sup>5</sup>
5	Darbhangha, Gaya, Jamui	Small items such as furniture, utensils	17	0.41
	<b>TOTAL</b>		<b>199</b>	<b>14.16</b>

<sup>2</sup> Araria- (Rs 50 lakh), Bhojpur - ( Rs 1.42 crore) , Gaya - (Rs 1.62 crore), Jamui- (Rs 61 lakh), Muzaffarpur- (Rs 1.20 crore)  
Sheohar - (Rs 59 lakh)

<sup>3</sup> Gaya- (Rs 6 lakh), Muzaffarpur- ( Rs 4.19 crore)

<sup>4</sup> Darbhanga - (Rs 84 lakh), Muzaffarpur- (Rs 1.90 crore)

<sup>5</sup> Bhojpur- (Rs 27 lakh), Sheohar- ( Rs 55 lakh)

### APPENDIX 1.3.3

(Refer: Paragraph 1.3.5.1; Page- 45)

*Details of funds released, expenditure incurred, balances and physical progress*

(Rupees in crore)

Year	No. of schemes approved	Cumulative fund provision/ allocation	Cumulative release by GOI (Rs in crore)	Cumulative release by State Government to districts	Cumulative expenditure incurred	Cumulative completion of schemes (per centage)	Balance amount in districts (Rs in crore) and (per centage of total release by State Government)
1	2	3	4	5	6	7	8
2004-05	N.A.*	315.00	157.50	120.00	N.A.*	N.A.*	N.A.*
2005-06	N.A.*	630.00	442.50	450.00	N.A.*	N.A.*	N.A.*
2006-07	12204	945.00	570.00	727.50	281.66	2833 (26)	445.84 (61)
2007-08	11185	Nil	630.00	780.00	497.71	5340 (48)	282.29 (36)
2008-09	11015	Nil	922.50	922.50	724.43	6651 (60)	198.07 (21)

\*N.A: Not available on the records of the department

**APPENDIX-1.3.4**  
(Refer: Paragraph 1.3.5.3; Page- 46)

## Statement showing blocking of funds

(Rupees in lakh)

Name of District	Sector	Executing agency	Number of schemes	Estimated Cost	Funds Released		Reasons
					Date	Amount	
Araria	Health	BCD	02	45.00	01.12.06	29.26	Procedural delays in finalization of tender
	Education	BCD	11	57.41	08.01.07	37.17	
	Agriculture	BCD	29	197.98	01.12.06, 11.12.07	128.69	
	Fisheries	BCD	02	15.78	25.09.07, 11.04.07	10.25	
	Animal Husbandry	BCD	05	22.06	26.10.06, 11.04.07	16.73	
	Security related	BCD	03	37.90	11.01.05, 29.03.07	24.54	
	Flood alleviation	BCD	32	384.57	16.01.07	249.93	
	<b>Total- 1</b>	<b>01</b>	<b>84</b>	<b>760.70</b>		<b>496.57</b>	
Bhojpur	Education	BCD	01	6.51	15.11.07	4.23	Procedural delays in preparation of estimate, finalisation of tender, Land problem
	Animal Husbandry	RWD-II	01	6.11	06.10.06	2.68	
	Security	BCD	02	17.00	28.02.07	11.04	
	Welfare	BDO,Ara,Udawan Nagar,Sahar, Barharwa, Charpokhari, Terari and BCD.	16	127.29	14.02.06,19.05.06	82.73	
	<b>Total- 2</b>	<b>08</b>	<b>20</b>	<b>156.91</b>		<b>100.68</b>	
Darbhanga	Health	BCD	03	47.50	31.03.06	30.87	No reply
	Education	BCD,HM, DEO,RWD-II	11	47.07	01.03.06	30.42	
	Fisheries	BCD,RWD-II	03	26.98	08.03.06	17.54	
	Animal Husbandry	BCD	03	9.00	11.02.06	5.85	
	<b>Total- 3</b>	<b>04</b>	<b>20</b>	<b>130.55</b>		<b>84.68</b>	
Gaya	Security	Mohanpur BDO,PHED	03	8.52	25.07.06	3.53	No reply
	Spiritual Tourism	SH Div	04	483.18	11.02.06	285.94	
	Welfare	BCD	01	129.99	13.03.07	76.71	
	<b>Total- 4</b>	<b>04</b>	<b>08</b>	<b>621.69</b>		<b>366.18</b>	
Jamui	Education	BCD & RWD	03	23.99	24.11.06	20.49	No specific reply
	Health	RWD	01	10.00	02.02.06	6.50	
	Fisheries	RWD	11	50.58	23.01.06	32.88	
	Security	BCD	03	0.75	04.01.06	0.49	
	<b>Total- 5</b>	<b>02</b>	<b>18</b>	<b>85.32</b>		<b>60.36</b>	
Muzaffarpur	Animal Husbandry	DAHO	01	17.00	23.08.06	11.05	Due to procedural delays at different stages in finalisation of tender
	Drainage	RCD2	01	15.19	11.09.06	7.60	Not specific. Noted for future guidance.
	Drinking Water	PHD	01	533.80	07.12.06	346.97	Delay in finalization of tender
	Education	BCD, DEO	51	141.93	31.03.06	125.69	Procedural delay, non availability of land
	Health	BCD	09	39.08	07.04.05	20.04	
	Police	BCD	03	8.90	12.03.08	4.45	Delay in approval of revised estimate, FIR on some schemes, flood problem
	Rural Road	REO (W) Div	01	81.43	18.09.06	40.71	
	<b>Total- 6</b>	<b>06</b>	<b>67</b>	<b>837.33</b>		<b>556.51</b>	
	<b>Grand Total</b>	<b>25</b>	<b>217</b>	<b>2592.50</b>		<b>1664.98</b>	

**APPENDIX-1.3.5**  
(Refer: Paragraph 1.3.6.1; Page- 47)

*Statement showing delay in finalisation of tenders*

Sl. No.	Name of the District	Name of the Division	Date of receipt of tenders	Date of Agreement		Delay in Agreement beyond 45 days (in days)
				Date	Number of agreements	
01	Araria	RWD-II	05.10.07	10.12.07 to 17.01.08	03	21 to 59
02	Araria	RWD-II	16.01.08	14.04.08	01	44
03	Araria	RWD-II	28.06.08	07.01.09	01	86
04	Araria	RWD-II	20.12.08	25.02.09 ,18.07.09	02	20 , 169
05	Araria	RWD-I	16.02.06	20.09.06	01	168
06	Araria	RWD-I	12.06.06	04.11.06 to 10.01.07	03	95 to 160
07	Araria	RWD-I	05.01.08	15.10.08	01	239
08	Araria	BCD	27.09.06	04.01.07 to 18.02.07	03	54 to 99
09	Araria	BCD	06.12.06	07.03.07 to 06.02.08	05	44 to 382
10	Araria	BCD	23.12.06	01.03.07 to 09.03.09	24	23 to 760
11	Araria	BCD	21.02.07	03.08.07 to 16.03.09	28	118 to 712
12	Araria	BCD	23.02.07	13.08.07 to 19.03.09	29	126 to 710
13	Araria	BCD	28.02.07	21.09.07 to 09.03.09	16	160 to 705
14	Araria	BCD	02.11.07	18.02.08 to 25.03.09	21	63 to 463
15	Araria	BCD	27.09.06	Not done till 10/09	02	951
16	Araria	BCD	06.12.06	Not done till 10/09	01	1021
17	Araria	BCD	23.12.06	Not done till 10/09	22	1038
18	Araria	BCD	21.02.07	Not done till 10/09	16	940
19	Araria	BCD	23.02.07	Not done till 10/09	08	938
20	Araria	BCD	28.02.07	Not done till 10/09	06	933
21	Araria	BCD	02.11.07	Not done till 10/09	13	685
	<b>Total 1</b>	<b>03</b>			<b>206</b>	
22	Gaya	RWD	05.07.06	27.01.07 to 20.03.07	04	161 to 202
23	Gaya	RWD	08.07.06	21.02.07	01	199
	<b>Total 2</b>	<b>01</b>			<b>05</b>	
24	Muzaffarpur	RCD 02	08.06.06	05.08.06 to 19.03.07	08	13 to 239
25	Muzaffarpur	RCD 02	19.09.06	20.11.06 to 18.01.07	07	17 to 76
26	Muzaffarpur	RCD 02	29.09.06	25.11.06	01	13
27	Muzaffarpur	RCD 02	15.02.07	12.04.07 to 25.04.07	02	11, 24
28	Muzaffarpur	RCD 02	16.03.07	27.06.07 , 30.10.07	02	58 , 183
29	Muzaffarpur	RWD	26.04.06	15.07.06	01	35
30	Muzaffarpur	RWD	10.01.08	12.04.08	01	47
	<b>Total 3</b>	<b>02</b>			<b>22</b>	
31	Sheohar	BCD	29.12.06	28.03.07	01	42
32	Sheohar	BCD	04.01.07	26.03.07	01	35
33	Sheohar	BCD	12.01.07	18.09.07	01	205
34	Sheohar	Bagmati Division	17.02.06	14.04.06 , 15.04.06	05	11, 12
35	Sheohar	REO at Sitamarhi	02.06.06	10.08.06 to 03.11.06	05	24 to 109
36	Sheohar	REO at Sitamarhi	08.03.07	13.09.07, 10.10.07	03	143 , 170
	<b>Total 4</b>	<b>03</b>			<b>16</b>	
	<b>Grand Total</b>	<b>09</b>			<b>249</b>	

## APPENDIX-1.3.6

(Refer: Paragraph 1.3.6.2; Page- 47)

## Statement of allotment of more than one work to the contractors

(Rupees in lakh)

Sl. No.	Name of District	Name of Division	Name of Agency	Agreement Number	Date of Agreement	Irregularly allotted agreements	Period prescribed for completion	Agreed value	As on the date of subsequent agreement		Upto date payment made
									Status	Payment made	
1	Araria	BCD	Mohd. Zafrul Islam	18F2/06-07	01.03.07		31.08.07	8.31	NA	NA	7.61
2	Araria	BCD	Mohd. Zafrul Islam	<b>34F2/06-07</b>	01.03.07	01	31.08.07	8.45	NA	NA	<i>7.54</i>
3	Araria	BCD	Mohd. Zafrul Islam	<b>10F2/07-08</b>	21.09.07	01	20.01.08	4.95	Less than 50 per cent complete	4.04	<i>4.20</i>
4	Araria	BCD	Mohd. Zafrul Islam	<b>26F2/07-08</b>	06.12.07	01	05.06.08	10.97	65 per cent complete	5.43	<i>9.99</i>
5	Araria	BCD	Mohd. Zafrul Islam	<b>27F2/07-08</b>	06.12.07	01	05.04.08	4.99	65 per cent complete	5.43	<i>3.54</i>
6	Araria	BCD	Mohd. Zafrul Islam	<b>51F2/07-08</b>	18.01.08	01	17.07.08	8.42	65 per cent complete	5.43	<i>3.70</i>
7	Araria	BCD	Mohd. Zafrul Islam	<b>52F2/07-08</b>	18.01.08	01	17.07.08	12.07	65 per cent complete	5.43	<i>5.69</i>
	<b>Total- 1</b>	<b>01</b>	<b>01</b>			<b>06</b>		<b>58.16<sup>6</sup></b>			<b>42.27<sup>7</sup></b>
1	Gaya	RWD	Dwarika Singh	33F2/06-7	27.01.07		26.07.07	102.77			46.95
2	Gaya	RWD	Dwarika Singh	92F2/06-07	30.03.07	01	30.06.07	167.33	20 per cent complete	15.10	<i>29.99</i>
	<b>Total- 2</b>	<b>01</b>	<b>01</b>			<b>01</b>		<b>270.10<sup>8</sup></b>			<b>76.94<sup>9</sup></b>
1	Muzaffarpur	RWD	Shyam Bihari	10F2/06-07	15.07.06		14.01.07	24.98	NA	NA	23.27
2	Muzaffarpur	RWD	Shyam Bihari	<b>11F2/06-07</b>	15.07.06	01	14.01.07	93.18	NA	NA	<i>48.37</i>
3	Muzaffarpur	RWD	Uday Shankar Chaudhry	02F2/06-07	17.04.06		16.10.06	7.93	NA	NA	7.03
4	Muzaffarpur	RWD	Uday Shankar Chaudhry	<b>03F2/06-07</b>	17.04.06	01	16.10.06	11.92	NA	NA	<i>5.69</i>
5	Muzaffarpur	RWD	Madhup Kumar Singh	04F2/06-07	05.05.06		04.11.06	18.33	NA	NA	13.73
6	Muzaffarpur	RWD	Madhup Kumar Singh	<b>05F2/06-07</b>	05.05.06	01	04.11.06	17.75	NA	NA	16.13 (Complete)
	<b>Total- 3</b>	<b>01</b>	<b>03</b>			<b>03</b>		<b>174.09<sup>10</sup></b>			<b>114.22<sup>11</sup></b>
	<b>Grand Total</b>	<b>03</b>	<b>05</b>			<b>10</b>		<b>502.35<sup>12</sup></b>			<b>233.43<sup>13</sup></b>

Note: Agreement number shown in bold are irregular and payment made on incomplete irregular works are shown in bold and italics. Payments made on these incomplete works are Rs (48.37+ 5.69+29.99+ 7.54+ 4.20+9.99+3.54+ 3.70+5.69) lakh = Rs 118.71 lakh

<sup>6</sup> Rs 49.85 lakh for irregular allotment.

<sup>7</sup> All works remained incomplete after expenditure of Rs 42.27 lakh..

<sup>8</sup> Rs 167.33 lakh for irregular allotment.

<sup>9</sup> Both works remained incomplete after expenditure of Rs 76.94 lakh..

<sup>10</sup> Rs 122.85 lakh for irregular allotment.

<sup>11</sup> Five works remained incomplete after expenditure of Rs 98.09 lakh..

<sup>12</sup> Rs 340.03 lakh for irregular allotment.

<sup>13</sup> 14 works (out of 15) remained incomplete after expenditure of Rs 217.30 lakh. (Rs 233.43 lakh - Rs 16.13 lakh)

**APPENDIX- 1.3.7**  
(Refer: Paragraph 1.3.6.3; Page- 48)

*Statement showing irregular payment and doubtful use of minor minerals*

Name of District	Name of the division	Number of Agreements	Name of Minor mineral	As per agreement to be brought from	Was sample of material obtained and approved	Name of document obtained	Payment made for carriage (Rs in crore)
Araria	BCD.	15	Stone Chips	Pakur	Not	No	0.20
			Bricks	Locally	Not	No	
			Chopra Sand	Chopra	Not	No	
			Local Sand	Locally	Not	No	
	RWD –I	10	Stone Chips	Siliguri	Yes	No	0.28
			Bricks	Locally	Yes	No	
			Chopra Sand	Chopra	Yes	No	
			Local Sand	Locally	Yes	No	
	RWD-II	5	Stone Chips	Pakur	Not	No	0.10
			Bricks	Locally	Not	No	
			Chopra Sand	Chopra	Not	No	
			Local Sand	Locally	Not	No	
<b>Total- 1</b>	<b>3</b>	<b>30</b>					<b>0.58</b>
Bhojpur	BCD	1	Local sand	Locally	Not	No	0.01
			Sone sand	Koilwar	Not	No	
			Stone Chips	Karbandiya	Not	No	
			Bricks	locally	Not	No	
	BEP	47	Stone chips	Karbandiya	Not	No	0.16
			Bricks	Locally	Not	No	
			Sone sand	Koilwar	Not	No	
<b>Total- 2</b>	<b>2</b>	<b>48</b>					<b>0.17</b>
Darbhanga	RWD Benipur	6	Stone Chips	Pakur	Not	No	0.59
			Sand	Kiul	Not	No	
			Brick	Locally	Not	No	
<b>Total- 3</b>	<b>1</b>	<b>6</b>					<b>0.59</b>
Gaya	RWD	5	Stone metal Gr .I, II, III	Badhua	Not	No	0.63
			Moorum	Badhua	Not	No	
			Stone Chips	Manpur	Not	No	
			Sand	Locally	Not	No	
			Brick	Locally	Not	No	
<b>Total- 4</b>	<b>1</b>	<b>5</b>					<b>0.63</b>
Jamui	RWD	7	Stone Metal Gr I, II, III	Sheikhpura	Not	No	1.29
			Sand	Locally	Not	No	
			Brick	Locally	Not	No	
<b>Total- 5</b>	<b>1</b>	<b>7</b>					<b>1.29</b>



Name of District	Name of the division	Number of Agreements	Name of Minor mineral	As per agreement to be brought from	Was sample of material obtained and approved	Name of document obtained	Payment made for carriage (Rs in crore)
Muzaffarpur	RWD	12	Stone Chips	Sheikhpura	Not	No	0.50
			Sand	Koilwar & locally	Not	No	
			Brick, Jhamma metal	Locally	Not	No	
	RCD-2	24	Stone Chips	Sheikhpura	Not	No	1.34
			Sand	Koilwar & locally	Not	No	
			Brick, Jhamma metal	Locally	Not	No	
	RCD- 1	19	Stone Chips	Sheikhpura	Not	No	0.72
			Sand	Koilwar & locally	Not	No	
			Brick, Jhamma metal	Locally	Not	No	
<b>Total- 6</b>	<b>3</b>	<b>55</b>					<b>2.56</b>
Sheohar	BCD	6	Stone Chips	Pakur	Not	No	0.20
			Bricks	Locally	Not	No	
			Sand	Koilwar	Not	No	
			Local Sand	Locally	Not	No	
	RWD-II	14	Stone Chips	Pakur	Not	No	0.14
			Bricks	Locally	Not	No	
			Sand	Koilwar	Not	No	
			Local Sand	Locally	Not	No	
<b>Total 7</b>	<b>2</b>	<b>20</b>					<b>0.34</b>
<b>Grand Total</b>	<b>13</b>	<b>171</b>					<b>6.16</b>

**APPENDIX-1.3.8**  
(Refer: Paragraph 1.3.6.4; Page- 48)

*Detail of irregular payment without verification of bitumen challans*

Sl. No.	Name of executing office	Name of work	Name of Material	Quantity (MT)			Price (Rs in lakh)
				Required	Challan/ Quality test report available	No proof	
1	RCD, Bhojpur	Sandesh Sahar Road	Bitumen	275.080	268.138	6.942	2.13
2	RWD Jamui	Barhat Thana Chowk to Navodaya Vidyalaya village	Bitumen	81.927	72.373	9.554	2.25
3	RCD1, Muzaffarpur	Different works <sup>14</sup>	Bitumen	69.845	13.44	56.405	9.83
4	RWD, Muzaffarpur	Different works <sup>15</sup>	Bitumen	18.375	NIL	18.375	3.50
			<b>TOTAL</b>	<b>445.227</b>	<b>353.951</b>	<b>91.276</b>	<b>17.71</b>

<sup>14</sup> Mithanpura chowk to Narayanpur Anant Railway station road part A,B,C, Sikandarpur to Rameshwar NG College road and Sikandarpur to MIT road via bandh (1F2,7F2,9F2,10F2,13F2/0506).

<sup>15</sup> Construction of RCC bridge in Mubarakpur and Jaffarpur to Chik patti road (6F2 and 10 F2/06-07).

**APPENDIX – 2.1**  
(Refer: Paragraph 2.1.4; Page- 64)

*Statement showing plantation done and percentage of survival of plants*

Sl. No.	Plantation site	Area (Hectare)	No. of plants planted during 2004 - 2006	60% of plantation after two years	Survival of plant in October 2008		No. of plants less than 60% (5-6)	Total expenditure (Rs.)	Exp. per plant (Rs.)	Loss on plantation (Rs)
					6. In number	7. In per cent				
1.	2.	3.	4.	5.	6.	7.	8.	9.	10.	11.
1.	Kushabija	27	28275	16965	10090	36	6875	725422	8.71	205991
2.	Kushabija	50	55000	33000	16225	29	16775			
3.	Lodhawe (Telani)	28	29375	17625	588	2	17037	329830	11.23	191326
4.	Lodhwe, Mahavari	28	29375	17625	881	3	16744	329830	11.23	188035
5.	Kathotia Kewal	28	29375	17625	0	Nil	17625	238892	8.13	143291
6.	Patwas	29	30000	18000	0	Nil	18000	243306	8.11	145980
7.	Dundu	29	30000	18000	0	Nil	18000	243306	8.11	145980
8.	Taro	29	30000	18000	0	Nil	18000	243306	8.11	145980
9.	Alakhdiha	28	29375	17625	882	3	16743	238892	8.00	133944
10.	Ajanwa, Jarlahi,	28	29305	17583	15374	52	2209	1235338	8.87	458659
11.	Bela	100	110000	66000	16500	15	49500			
12.	Dhanwa	28	28812	17287	0	Nil	17287	269890	9.37	161979
13.	Kahudag	29	37552	22531	16500	44	6031	449830	11.98	72251
14	Bagula	28	30472	18283	0	Nil	18283	378046	12.41	226892
15	Sawkala, Daudpur & Mahapur	100	110000	66000	32945	30	33055	1042550	9.48	313361
	<b>Total</b>	<b>592</b>	<b>636920</b>	<b>382154</b>	<b>109985</b>			<b>5968447</b>		<b>2533680</b>

**APPENDIX – 2.2**  
(Refer: Paragraph 2.1.6; Page- 67)

*Statement showing fraudulent payments on muster rolls*

Sl. No.	Offices	Scheme No./name	Amount (Rs)	No. of MR
1	RD Special Division –I, Bettiah.	75,57 /06-07 (MLA)	27608	5
2	RD Special Division –II, Bettiah.	2,3/06-07 (MLA)	53304	12
3	RW Division-II, Biharsharif, Nalanda	210,421,430,425, 426,431,432,688, 211,422,423 and 532 of 2006-07 (MLC)	37756	15
4	M.I. Division, Bhagalpur	1. Renovation work at Andher Dam /06-07 (MLA) 2. Renovation work of Kunda Dam/06-07 3. Renovation work of Bilasi Dam/06-07 4. Work of Chandan Dam, /06-07 5. Rural Road Work Indrakshetra/06-07	57000	8
5	RD Spl. Division-II, Gaya	63/06-07 ,133/04-05 ,58/06-07, 55/06-07 , 75/04-05 (MLA)	75187	24
6	NREP, Nalanda	3/05-06, 8/05-06 , 9/05-06 (MLA)	17680	6
	<b>Total</b>	<b>29</b>	<b>268535</b>	<b>70</b>

**APPENDIX – 2.3**  
(Refer: Paragraph 2.2.2; Page- 70)

*Statement showing delays at various stages of execution of flood protection works*

Sl. No.	Event	Stipulated date of completion as per flood calendar	Date of actual execution	Delay
1	Inspection of site and reporting by sub-committee of High Level Committee (HLC)	5-10 October	State inspection by sub-committee of TAC on 24.10.2006	14 days
2	Inspection of site and reporting by HLC	12-17 October	Report submission by sub-committee of TAC on 07.11.2006	21 days
3	Meeting of TAC and its recommendation/ reporting	12-18 November	6-22 November 2006	4 days
4	Submission of plan before SRC in light of recommendation by TAC	20-25 November	25.11.2006	--
5	Meeting of SRC and recommendation/ Reporting	8-13 November	23.11.2006 to 11.12.2006	28 days
6	Meeting of Bihar State Flood Control Board	5 December	17.01.2007 to 18.01.2007	43 days
7	Date of approval of execution of work	10 December	19.04.2007	130 days
8	Date of technical sanction of estimate	12 December	23.02.2007	73 days
9	Date of Notice Inviting Tender (NIT)	14 December	15.02.2007	63 days
10	Date of tender	Upto 10 January	06.03.2007	55 days
11	Date of finalization of tender	Upto 17 January	19.04.2007	92 days
12	Date of allotment of work	18-20 January	19.04.2007	89 days
13	Actual date of start of work	20-27 January	20.04.2007	83 days
14	Date of completion of work	30 April	15.06.2007	46 days

**APPENDIX -2.4**  
(Refer: Paragraph 2.2.3; Page- 73)

*Statement showing excess payment due to irregular counting of services*

Sl No.	Name	Present Post and Scale	Actual Post after rectification of date of absorption and Scale	Date of appointment as temporary lecturer	Excess amount drawn (Amount in Rs)	Remarks
1	Dr./Prof. Raghvendra Prasad Singh	Professor (16400-22400)	Reader (12000-18300)	06.01.77	593316.00	Lecturers were promoted to the post of Reader after 10 years and to the post of Professor after 16 years under Time Bound Promotion Scheme and the scheme was discontinued since 23.09.95
2	Birendra Kumar Singh	Do	-Do-	01.09.76	593316.00	
3	Dr.D.K.Tiwary	Do	Do-	10.01.77	593316.00	
4	Dr. Kamini Sinha,	Do	Do	03.01.79	593316.00	
5	Dr.B. N. Choudhary	Do	Do	19.09.77	522901.00	
6	Dr. Rajesh Kumar	Do	Do	20.09.77	522901.00	
7	B.P. Bhaghat	Do	Do	20.09.77	522901.00	
8	K. M. Jha	Do	Do	17.09.77	522901.00	
				Total	4464868.00	

**APPENDIX-2.5**  
(Refer: Paragraph 2.4.3; Page- 81)

**Statement showing expenditure incurred on purchase of equipment and ambulance**

Year	Sl No.	Name of Machine/equipment	Value (Rs)
2004-05	1	Micropipette (200-1000UI)	6,950
	2	Micropipette (5-50 UI)	6500
	3	Water bath Doubled wall	5460
	4	Incubator- 355×355×355mm	9500
	5	Hot air oven-355×355×355mm	9800
	6	Portable Autoclave-350×325mm	10500
	7	Hospital bed with accessories	2500
	8	Digital Haemoglobin meter	9500
	9	Steel tank for Developer, fixer and Wastes Cap-9 Lt, set of three	2300
	10	X-ray cassette 15''×12''	650
	11	Intensifying screen 15''×12''	2500
	12	X-ray cassette 10''× 8''	450
	13	Intensifying screen 10''×8''	2200
	14	Chest stand	1550
	15	Divider	350
	16	Infugen stand	250
	17	Beaker- 250 ml (2)	120
	18	Beaker- 500 ml (2)	170
	19	Conical flask- 150 ml (2)	170
	20	Conical flask- 250 ml (2)	180
	21	Test tube -15×150 (12)	120
	22	Test tube -18×150 (12)	132
	23	Test tube stand (2)	120
	24	Petri Dish (2)	130
	25	E.S.R. Stand	130
	26	W.B.C. Pipette (2)	160
	27	R.B.C. Pipette (2)	160
	28	Counting chamber for Haemocytometer	570
	29	Hanger Different size (8)	1200
		<b>Total:</b>	<b>74322</b>
		<b>CST/BST/TOT(+)</b>	<b>9989</b>
		<b>IT (-)</b>	<b>1686</b>
			<b>82625</b>
	30	Centrifuge Remi	5519
	31	Semi Auto analyser	320469
	32	Flame Photometer	48693
	33	300m X-ray machine	465000
	34	Elisa reader, ECG machine model-108 MK VII and Model 8308 With accessories	263496
	35	Binocular microscope	34360
	36	Fridge and Stabiliser	9736
	37	Ambulance and accessories	298575
		<b>Total: (2004-05)</b>	<b>1528473</b>
2006-07	38	SONOLINE G-50 Color Doppler System with accessories	1795000
		<b>G.T.(2004-05 &amp; 2006-07)</b>	<b>3323473</b>

**APPENDIX-2.6**  
*(Refer: Paragraph 2.4.3; Page- 81)*

*Details of idle equipment and ambulance*

<b>Year</b>	<b>Sl No.</b>	<b>Name of Machine/equipment</b>	<b>Value (Rs)</b>
2004-05	1	Incubator- 355×355×355mm	10,777
	2	Digital Haemoglobin meter	10,777
	3	X-ray cassetter 15''×12''	737
	4	Intensifying screen 15''×12''	2,836
	5	X-ray cassetter 10''× 8''	510
	6	Intensifying screen 10''×8''	2,496
	7	Chest stand	1,758
	8	Divider	397
	9	Centrifuge Remi	5,519
	10	Semi Auto analyser	3,20,469
	11	Flame Photometer	48,693
	12	300m X-ray machine	4,65,000
	13	Elisa reader	1,49,440
2006-07	14	SONOLINE G-50 Color Doppler System with accessories	17,98,000
		<b>Grand Total</b>	<b>28,17,409</b>



**APPENDIX- 2.7***(Refer: Paragraph – 2.5.1.; Page - 84)***Detail of outstanding Inspection Reports/ paras**

Sl. No.	Name of Department	2003-2004		2004-2005		2005-2006		2006-2007		2007-2008		2008-2009		Total	
		IR	Para	IR	Para	IR	Para	IR	Para	IR	Para	IR	Para	IR	Para
1.	Rural Development	211	2065	193	1511	238	1952	254	2052	203	1337	232	1607	1331	10524
2.	Welfare	40	324	12	83	39	160	45	201	45	257	86	348	267	1373
3.	Finance	4	16	3	10	15	18	5	18	10	39	14	44	51	145
4.	Urban Development	15	76	1	5	0	0	3	14	39	98	5	10	63	203
5.	Labour Employment	42	130	1	5	1	6	0	0	10	22	1	1	55	164
6.	Planning and statistic	3	11	3	9	0	0	8	26	1	5	23	48	38	99
7.	Information and Broad casting	8	28	1	1	2	8	5	15	1	2	5	10	22	64
8.	Panchayati Raj	38	95	12	35	0	0	1	9	12	35	0	0	63	174
9.	Health	3	16	42	291	101	301	51	220	100	456	100	296	397	1580
10.	Home	22	144	73	475	48	296	57	201	75	302	66	201	341	1619
11.	Land acquisition	43	135	8	24	28	32	24	49	15	57	57	86	175	383
12.	Human Resources	105	420	120	495	65	257	93	477	109	580	75	302	567	2531
13.	Agriculture	65	152	48	280	12	24	23	98	60	200	28	119	236	873
14.	Industry	20	75	18	78	5	30	19	88	12	63	7	29	81	363
15.	Land Revenue	28	95	25	102	55	156	79	227	21	61	20	44	228	685
16.	Law	18	66	13	55	8	24	13	27	5	21	11	39	68	232
17.	Animal Husbandry	16	78	9	27	20	56	49	157	40	159	24	75	158	552
18.	Co-operative	2	3	19	40	5	12	37	151	14	45	11	32	88	283
19.	Excise	18	34	13	26	14	22	12	16	12	18	9	17	78	133
20.	Fishery	25	75	5	18	0	0	0	0	18	61	5	10	53	164

21.	Tourism	10	30	3	10	0	0	0	0	12	35	3	8	28	83
22.	Road Construction	18	86	59	354	25	105	40	256	21	145	56	335	219	1281
23.	Building Construction	17	54	22	130	28	169	37	258	31	177	48	388	183	1176
24.	Public Health Engineering	19	155	09	40	10	72	35	207	19	84	53	339	145	897
25.	Water Resources	76	628	48	368	36	198	58	487	48	288	104	554	370	2523
26.	Rural Works	21	87	76	454	27	131	40	202	37	268	55	421	256	1563
	TOTAL	887	5078	836	4926	782	4029	988	5456	970	4815	1098	5363	5561	29667

**APPENDIX- 2.8***(Refer: Paragraph – 2.5.2.; Page - 85)**Department-wise details of non-submission of Action Taken Notes*

Sl no.	Department	1999-2000		2000-01		2001-02		2002-03		2003-04		2004-05		2005-06		2006-07		2007-08		Total
		Review	Para	Review	Para	Review	Para	Review	Para	Review	Para	Review	Para	Review	Para	Review	Para	Review	Para	
1.	Health	Nil		2	--	--	1	2	1	2	--	--	1	1	--	--	1	--	1	12
2.	Human Resources	--	2	1	--	1	1	--	1	1	2	--	1	1	3	--	5	1	2	22
3.	Rural Development	--	--	--	1	3	1	--	3	1	4	1	9	--	5	1	5	1	6	41
4.	Agriculture	--	1	--	2	--	--	--	--	--	1	--	--	--	--	1	--	--	5	10
5.	Industry	--	1	--	--	--	--	--	--	1	--	--	--	--	1	--	--	--	--	03
6.	Energy	--	--	--	--	--	--	--	--	--	--	--	--	--	--	--	1	--	--	01
7.	Home	--	1	--	1	--	2	1	1	--	2	--	--	1	--	--	1	--	--	10
8.	Water Resources	--	--	--	1	--	3	1	5	--	1	1	2	--	7	--	7	1	4	33
9.	Minor Irrigation	--	1	--	--	--	--	--	--	--	--	--	--	--	--	--	--	--	--	01
10.	Building Construction	1	2	--	1	--	1	--	1	--	--	--	--	--	1	--	3	--	2	12
11.	Road Construction	--	--	--	5	--	4	--	9	--	3	--	3	--	2	1	2	--	1	30
12.	Public Health Engineering	--	1	2	--	--	--	--	--	--	--	--	--	--	1	1	3	--	2	10
13.	Revenue and Land Reforms	--	--	--	--	--	1	--	1	--	--	--	2	--	--	--	1	--	--	05
14.	Welfare	--	3	--	1	--	1	2	2	--	--	--	--	--	1	1	--	--	1	12
15.	Forest	--	2	1	2	--	1	--	1	--	--	--	--	1	--	--	2	--	--	10
16.	Animal Husbandry	--	--	--	--	1	--	--	3	--	--	1	--	--	--	--	2	--	--	07
17.	Local Body	--	--	--	4	--	2	--	--	--	--	--	--	--	--	--	--	--	--	06

Sl no.	Department	1999-2000		2000-01		2001-02		2002-03		2003-04		2004-05		2005-06		2006-07		2007-08		Total
		Review	Para	Review	Para	Review	Para	Review	Para	Review	Para	Review	Para	Review	Para	Review	Para	Review	Para	
18.	Urban Development	2	4	--	--	--	--	--	--	--	--	--	1	--	--	--	--	1	--	08
19.	Labour Employment and Training	--	1	--	--	--	--	--	1	1	--	--	1	--	--	--	1	--	--	05
20.	Vidhan Mandal	--	9	--	--	--	--	--	--	--	--	--	--	--	--	--	1	--	--	10
21.	Co-operative	--	--	--	--	--	2	--	--	--	--	--	--	--	--	--	--	--	--	02
22.	Commercial Authority	--	--	--	2	--	1	--	--	--	--	--	--	--	--	--	--	--	--	03
23.	Law	--	--	--	--	--	--	--	--	--	2	--	--	--	--	--	--	--	--	02
24.	Disaster Management	--	--	--	--	--	--	--	--	--	1	2	--	--	--	--	--	--	--	03
	<b>Total</b>	<b>03</b>	<b>28</b>	<b>06</b>	<b>20</b>	<b>05</b>	<b>21</b>	<b>06</b>	<b>29</b>	<b>06</b>	<b>16</b>	<b>05</b>	<b>20</b>	<b>04</b>	<b>21</b>	<b>05</b>	<b>35</b>	<b>04</b>	<b>24</b>	<b>258</b>

**APPENDIX- 2.9**  
(Refer: Paragraph – 2.5.3.; Page - 85)

**Status of Action Taken Notes on the recommendation of PAC**

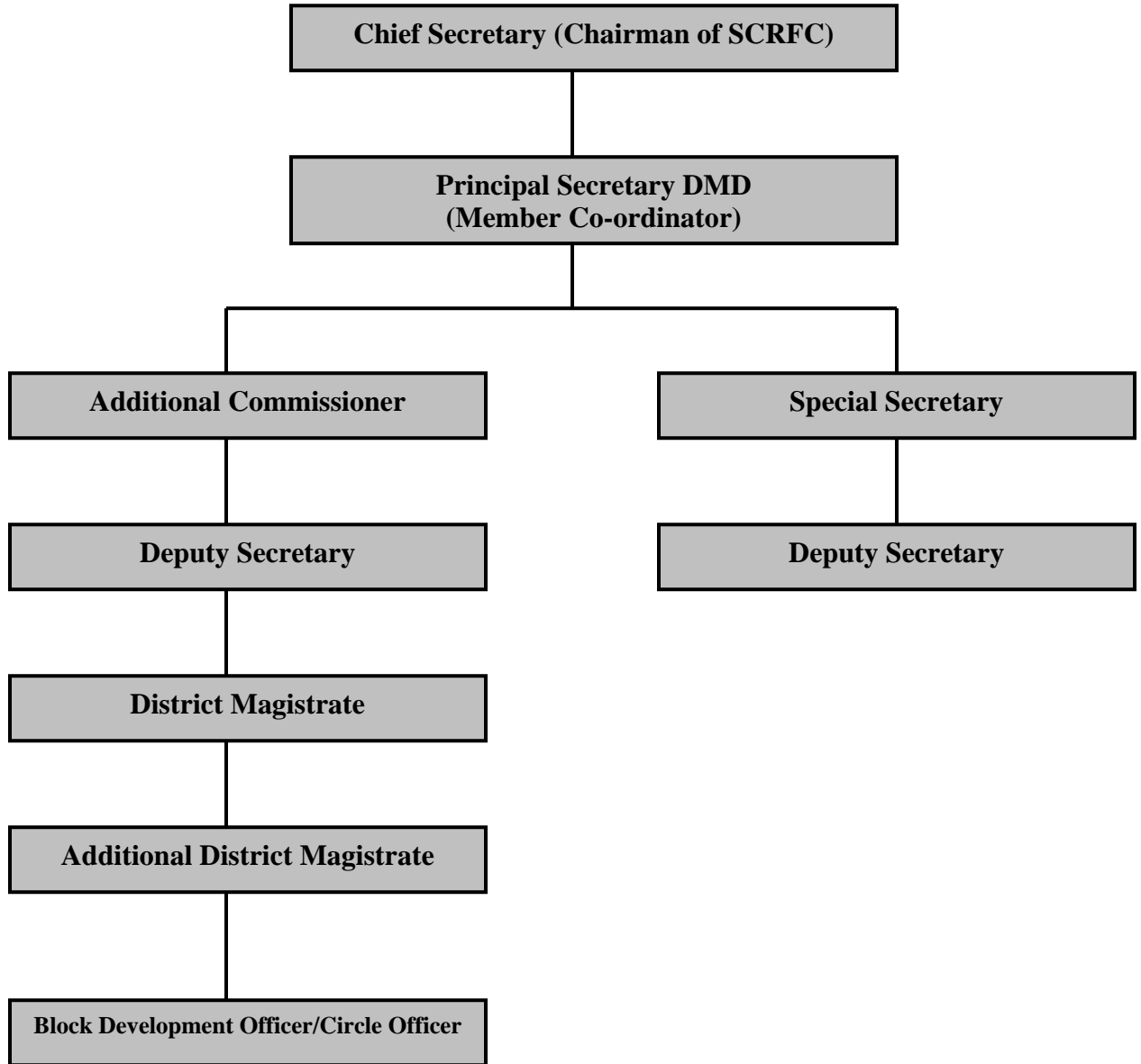
Sl. No.	Name of Department	P.A.C. Report No.	Number of Paras on which ATNs by department not furnished
1.	Rural Development Department	326*, 357, 446	32
2.	Rural Engineering Organisation	414	11
3.	Road Construction Department	347, 369, 430	31
4.	Labour & Employment Department	388	01
5.	Science & Technology	396	03
6.	Urban Development Department	406, 447	08
7.	Public Health Engineering Department	348, 453, 426	12
8.	Finance Department	386	04
9.	Health Department	335, 399	52
10.	Panchayati Raj Department	451	02
11.	Energy Department	349	02
12.	Environment Department	384	01
13.	Home Department	334, 419, 397	12
14.	Agriculture Department	346, 521, 422	14
15.	Co-operative Department	351, 465, 428	07
16.	Human Resources Development Department	358, 359, 379, 411, 417, 457, 470, 394, 395, 420, 390, 389	70
17.	Animal Husbandry Department	415, 445	18
18.	Relief & Rehabilitation	398, 400	09
19.	Water Resources Department	323, 374, 377, 368, 367, 378	14
20.	Minor Irrigation Department	352, 416, 450	16
21.	Welfare Department	387, 397	07
22.	Planning & Development Department	466	02
23.	Revenue & Land Reforms Department	454, 463	05
24.	Personnel Department	459	01
25.	Cabinet Secretariat Department	460	01
26.	Food, Civil Supplies & Commerce Department	448, 391	04
27.	Institutional Finance & Programme Implementation Department	392	06
28.	Industry Department	438	08
29.	Building Construction Department	429	11
30.	Civil Aviation Department	425	04
<b>Total</b>			<b>368</b>

\* 326- 08.11.2000 (Laid on 08.11.2000 in Bihar Vidhan Sabha).

**APPENDIX-3.1**

*(Refer: Paragraph- 3.2; Page- 89)*

**Organisational set-up of Disaster Management Department**



*(Source: Disaster Management Department)*

**APPENDIX -3.2**  
(Refer: Paragraph-3.2; Page- 89)

***Organisational Set up***

***Details of Disaster Management Authorities***

- (1) **State Disaster Management Authority shall consist of following members, namely:-**
- a) the Chief Minister of the State, Chairperson, ex-officio
  - b) other members, not exceeding eight, to be nominated by the chairperson of the State Authority
  - c) The Chief Secretary, Member, ex-officio
- (2) **The State Executive Committee shall consist of the following members, namely:-**
- a) the Chief Secretary – Chairperson, ex-officio
  - b) the Development Commissioner – Member
  - c) the Secretary, Finance Department – Member
  - d) the Secretary, Water Resource Department – Member
  - e) the Secretary, Disaster Management Department – Member (Convenor of Committee)
- (3) **District Disaster Management Authority consist of the following members, namely:-**
- a) District Magistrate or Deputy Commissioner as the case may be- Chairperson, ex-officio
  - b) Chairman, Zila Parishad- Co-Chairperson, ex-officio
  - c) Deputy Development Commissioner- Member, ex-officio
  - d) Superintendent of Police- Member, ex-officio
  - e) Civil Surgeon cum Chief Medical Officer- Member, ex-officio
  - f) Additional District Magistrate\*( Relief) – Member, ex-officio
  - g) Senior Engineer of district- Member, ex-officio

(\* Additional District Magistrate (Relief) in the district shall work as Chief Executive Officer of the district authority.)

***(Source: The Disaster Management Act, 2005)***

**APPENDIX-3.3**  
(Refer: Paragraph 3.7.2; Page- 93)

*Statement showing transfer of funds to blocks/circles in selected districts*

*(Rupees in lakh)*

<b>Name of District</b>	<b>Year</b>	<b>Allotment</b>	<b>Fund allotted to block/ circle/ others</b>	<b>Surrender</b>
Sitamarhi	2006-07	76.50	37.22	39.28
	2007-08	16903.71	16719.68	184.03
	2008-09	1057.98	476.68	581.30
Madhepura	2006-07	368.14	104.39	263.75
	2007-08	1144.30	517.70	626.60
	2008-09	35274.02	30164.13	5109.89
Saharsa	2006-07	90.50	53.00	37.50
	2007-08	1178.95	1150.05	28.90
	2008-09	12502.23	10786.22	1716.01
Patna	2006-07	209.02	52.36	156.66
	2007-08	3350.52	2704.97	645.55
	2008-09	4199.72	2472.48	1727.24
Araria	2006-07	41.00	2.90	38.10
	2007-08	90.43	19.63	70.80
	2008-09	9051.49	8501.27	550.22
East Champaran	2006-07	907.07	903.00	4.07
	2007-08	9881.28	9767.97	113.31
	2008-09	10467.11	4055.20	6411.91
Supaul	2006-07	119.28	11.17	108.11
	2007-08	2269.34	1725.56	543.78
	2008-09	22737.00	19427.77	3309.23
Purnia	2006-07	77.00	28.52	48.48
	2007-08	108.20	17.33	90.87
	2008-09	6629.84	3833.48	2796.36
Total (Rs in lakh)	2006-07	1888.51	1192.56	695.95
	2007-08	34926.73	32622.89	2303.84
	2008-09	101919.39	79717.23	22202.16
<b>Total (Rs in crore)</b>	<b>2006-07</b>	<b>18.89</b>	<b>11.93</b>	<b>6.96</b>
	<b>2007-08</b>	<b>349.27</b>	<b>326.23</b>	<b>23.04</b>
	<b>2008-09</b>	<b>1019.19</b>	<b>797.17</b>	<b>222.02</b>

*(Source: Concerned DM's Offices)*



**APPENDIX –3.4**  
(Refer: Paragraph 3.7.2; Page- 93)

**Statement showing drawal of funds without immediate requirement**

			(Rupees in lakh)
<i>Name of District</i>	<i>No.of Block</i>	<i>Year</i>	<i>Amount</i>
<b>Madhepura</b>			
	CO, Alamnagar	2007-08	17.44
	CO, Alamnagar	2008-09	1371.53
	<b>Total</b>		<b>1388.97</b>
<b>Saharsa</b>	CO, Mahesi	2008-09	11.49
	CO, Patarghat	2008-09	557.07
	CO, Banwa Itahari	2008-09	275.45
	CO, Salakhua	2008-09	251.47
	CO, Simri Bakhityarpur	2007-08	55.09
		2008-09	137.52
	CO, Saharsa	2008-09	20.61
	DMD, Saharsa	2007-08	26.69
		2008-09	163.31
	ICDS, Saharsa	2008-09	50.00
<b>Total</b>		<b>1548.70</b>	
<b>Sitamarhi</b>	DMD, Sitamarhi	2006-07	28.00
		2007-08	90.83
		2008-09	758.17
	CO, Dumra	2007-08	42.94
	<b>Total</b>		<b>919.94</b>
<b>Araria</b>	DMD, Araria	2008-09	430.16
	<b>Total</b>		<b>430.16</b>
<b>Purnia</b>	DMD, Purnea	2008-09	1111.00
	CO, Banmankhi	2008-09	28.15
	<b>Total</b>		<b>1139.15</b>
<b>Patna</b>	DMD, Patna	2007-08	2.39
		2008-09	13.16
	<b>Total</b>		<b>15.55</b>
<b>Supaul</b>	DMD, Supaul	2008-09	634.75
	CO, Saraigarh Bhaptiyahi	2008-09	27.40
	CO, Pratappanj	2008-09	193.00
	CO, Supaul	2008-09	66.87
	<b>Total</b>		<b>922.02</b>
<b>East Champaran</b>	DMD, East Champaran	2008-09	1518.75
	CO, Banzaria	2008-09	49.83
	CO, Turkoliya	2008-09	1.16
	BDO, Sangrampur	2008-09	93.97
	CO, Motihari	2008-09	115.16
	<b>Total</b>		<b>1778.87</b>
		<b>2006-07</b>	<b>28.00</b>
		<b>2007-08</b>	<b>235.38</b>
		<b>2008-09</b>	<b>7879.98</b>
<b>Grand Total</b>			<b>8143.36 or say 81.43 crore</b>

**APPENDIX -3.5**  
(Refer: Paragraph 3.7.3; Page- 94)

**Statement showing outstanding advances**

(Rupees in lakh)

<b>Name of District</b>	<b>No.of Block</b>	<b>Year</b>	<b>Amount</b>
<b>Madhepura</b>	CO, Singeshwar	2008-09	538.92
	CO, Madhepura	2008-09	185.10
	Nagar Parishad, Madhepura	2008-09	675.42
	Nagar Panchyat, Murliganj	2008-09	346.92
	CO, Murliganj	2008-09	1384.55
	SDO, Madhepura	2008-09	106.59
	CO, Kumar Khand	2008-09	1899.00
	CO, Alam Nagar	2008-09	56.21
	<b>Total</b>		<b>5192.71</b>
<b>Saharsa</b>	CO, Mahesi	2006-09	22.40
	CO, Patarghat	2006-09	1211.75
	CO, Banwa Itahari	2006-09	16.43
	CO, Salakhua	2008-09	14.03
	CO, Saharsa	2008-09	3.44
	CO, Simri Bakhtiyarpur	2008-09	52.64
	CO, Sonbarsa	2007-09	2522.14
	<b>Total</b>		<b>3842.83</b>
<b>Sitamarhi</b>	DMD, Sitamarhi	2006-08	7.34
	CO, Dumra	2007-08	1.60
	CO, Bathnaha	2006-07	2.99
	<b>Total</b>		<b>11.93</b>
<b>East Champaran</b>	CO, Motihari	2006-09	80.19
	CO, Banzaria	2008-09	0.23
	CO, Turkoliya	2007-09	0.03
	BDO, Sangrampur	2006-09	85.71
	<b>Total</b>		<b>166.16</b>
<b>Supaul</b>	DMD, Supaul	2006-09	76.73
	CO, Pratapganj	2006-09	2.45
	CO, Supaul	2006-09	3.39
	<b>Total</b>		<b>82.57</b>
<b>Patna</b>	DMD, Patna	2007-08	2.81
	CO, Danapur	2006-09	0.35
	CO, Fatuha	2006-09	31.17
	<b>Total</b>		<b>34.33</b>
<b>Araria</b>	DMD, Araria	2006-09	2.97
	CO, Narpatganj	2007-09	2073.00
	CO, Farbisganj	2007-09	62.98
	BDO, Forbisganj	2006-09	18.14
	<b>Total</b>		<b>2157.09</b>
<b>Purnia</b>	CO, Banmankhi	2008-09	2.68
	<b>Total</b>		<b>2.68</b>
<b>Grand Total</b>			<b>11490.30 or Say 114.90 crore</b>

**APPENDIX -3.6**  
(Refer: Paragraph 3.7.4; Page- 94)

**Statement showing outstanding abstract contingent bills**

**(Rupees in lakh)**

<b>Name of District</b>	<b>Name of Offices</b>	<b>Year</b>	<b>No.of AC bills</b>	<b>Amount</b>
<b>Madhepura</b>	CO, Singeshwar	2008-09	16	1583.24
	CO, Murliganj	2008-09	21	3286.62
	SDO, Madhepura	2008-09	9	160.78
	CO, Madhepura	2008-09	19	2088.37
	CO, Kumarkhand	2008-09	12	4354.40
	Nagar Panchyat, Murliganj	2008-09	9	422.79
	CEO, Nagar Parishad, Madhepura	2008-09	9	601.29
	<b>Total</b>		<b>95</b>	<b>12497.49</b>
<b>Saharsa</b>	CO, Mahesi	2006-07	4	1.35
		2007-08	20	45.75
		2008-09	11	293.16
	CO, Banwa Itahari	2007-08	17	120.70
		2008-09	29	1158.34
	CO, Salakhua	2006-07	2	0.66
		2007-08	16	131.43
		2008-09	12	528.08
	CO, Patarghat	2008-09	33	1873.12
	CO, Sonbarsa	2007-08	8	135.74
		2008-09	15	3530.35
	CO, Simri Bakhtiyarpur	2006-07	1	4.12
		2007-08	5	216.42
2008-09		10	945.70	
	<b>Total</b>		<b>183</b>	<b>8984.92</b>
<b>Supaul</b>	DMD, Supaul	2007-08	8	985.79
		2008-09	11	11877.61
		<b>Total</b>		<b>19</b>
<b>Purnia</b>	DMD, Purnea	2008-09	13	60.68
	CO, Banmankhi	2008-09	7	742.08
		<b>Total</b>	<b>20</b>	<b>802.76</b>
<b>East Champaran</b>	DMD, East Champaran	2006-07	17	707.04
		2007-08	65	3590.72
		<b>Total</b>	<b>82</b>	<b>4297.76</b>
<b>Sitamarhi</b>	DMD, Sitamarhi	2006-07	12	37.22
		2007-08	25	14409.59
		2008-09	1	4.00
		<b>Total</b>	<b>38</b>	<b>14450.81</b>
<b>Patna</b>	DMD, Patna	2007-08	3	10.33
	CO, Fatuha	2007-08	5	126.11
		2008-09	5	132.68
	CO, Patna Sadar	2007-08	10	35.43
		2008-09	21	82.49
	<b>Total</b>	<b>44</b>	<b>387.04</b>	
<b>Araria</b>	DMD, Araria	2006-07	6	9.00
		2007-08	3	7.98
		2008-09	21	7882.66
	CO, Forbisganj	2008-09	1	117.49
	CO, Narpaganj	2008-09	7	419.16
		<b>Total</b>	<b>38</b>	<b>8436.29</b>
<b>Grand Total</b>			<b>519</b>	<b>62720.47 or say 627.20 Crore</b>

**APPENDIX -3.7**  
**(Refer: Paragraph-3.9.1; Page- 98)**

***Details of proposed and approved flood protection works***

SI.No.	Site where work was proposed	Brief of proposals of diversions	Recommendations' of KHLC	Finally approved and executed works	Curtailed works
1	Between 12.80 km to 12.90 km of EAB	Construction of three studs. (12 m X 6 m)	Wait & watch.	As recommended by KHLC.	Construction of three studs.
2	Between 12.90 km to 13.60 km of EAB	Construction of eight studs. (12 m X 6 m)	Construction of five studs. (12 m X 6 m)	Construction of five studs (12 m X 6 m)	Construction of three studs.
3	Spur at 11.90 km of EAB	(A) Restoration of nose apron (12m X 1.20 m) with slope on N/C base. (B) Restoration of U/S shanks portion in 76.0 m and D/S shanks in 38.0 (12 m X 6 m) with slopes on N/C base.	Restoration of nose apron in 9 m width nose slope pitching and negotiate the nose apron with the existing apron in U/S and D/S shank of the spur near the junction point of shank and nose apron after due probing.	As recommended by KHLC.	The area of nose apron restoration and length of U/S and D/S shanks.
4	Spur at 12.10 km of EAB	(A) Restoration of nose apron (12 m X 1.20 m) with slope on N/C base. (B) Restoration of U/S shanks portion in 76.0 m and D/S shanks in 38.0 m (12m to 6m) with slopes on N/C base.	Restoration of U/S nose apron corner in three meter width in embayed portion.	As recommended by KHLC.	The area of nose apron restoration and length of U/S and D/S shanks.
5	Spur at 12.90 km of EAB	Restoration of nose slope and 12 H wide apron along with four nose teeth in U/S shank 6 m X 6m.	(1) Restoration in embayed portion of D/S corner of nose apron to negotiate it with the existing apron in U/S side after due probing. (2) Restoration in U/S shank portion in three meter width in a length of 21 m in the embayed portion near the nose of spur.	As recommended by KHLC.	Type of work changed
6	Between 0.60 km to 12.80 km of EAB (in country side)	Repairing of countryside slope at different points between 0.60 km to 12.80 km of EAB by crated toe and earthwork.	Wait & watch.	As recommended by KHLC.	Repair of countryside slope.

**APPENDIX -3.8**  
(Refer: Paragraph-3.9.5; Page- 102)

*Statement showing selection of ineligible persons and irregular payments*

*(Rupees in crore)*

<b>Name of District</b>	<b>No. of Block</b>	<b>No. of beneficiaries</b>	<b>No. of beneficiaries checked</b>	<b>payment</b>
East Champaran	09	5537	325	0.78
Purnia	02	409	136	0.33
Madhepura	03	857	288	0.69
Patna	02	626	34	0.08
Saharsa	02	2176	2176	5.22
Supaul	02	1652	172	0.41
<b>Total</b>	<b>20</b>	<b>11257</b>	<b>3131</b>	<b>7.51</b>

**APPENDIX-3.9**  
(Refer: Paragraph-3.9.5; Page- 102)

*Statement showing non-adherence to the norms for selection of beneficiaries*

Name of District	Photographs of hutments shows them in good condition	Washed out hutments	Selection without approval of case file by BDO/CO	Land was not in the name of beneficiaries/land not available	Payment made without land receipts (on self affidavit)	Without maintaining age, surroundings of land, date of damage of hutments	Payment other than approved beneficiaries	Total
Madhepura	--	--	--	288	--	--	--	288
Saharsa	--	--	--	--	2176	--	--	2176
Patna	--	--	--	13	--	--	21	34
Supaul	--	--	--	--	--	172	--	172
East Champaran	55	73	42	--	--	155	--	325
Purnia	54	42	--	--	--	40	--	136
<b>Total</b>	<b>109</b>	<b>115</b>	<b>42</b>	<b>301</b>	<b>2176</b>	<b>367</b>	<b>21</b>	<b>3131</b>

**APPENDIX -3.10**  
(Refer: Paragraph 3.9.5; Page- 102)

***Details of assistance given for damaged houses/hutments and houses constructed***

*(Rupees in crore)*

<b>Name of District</b>	<b>Amount Distributed</b>	<b>Total No. of affected Block</b>	<b>No. of beneficiaries</b>	<b>No. of house completed</b>	<b>Date of completion</b>
East Champaran	25.40	20	10583	2220	June 2009
Purnia	1.02	03	427	-	-
Sitamarhi	49.23	17	20513	-	-
Madhepura	2.06	03	857	580	July 2009
Patna	16.77	20	6851	2389	July 2009
Saharsa	15.82	06	6592	1345	July 2009
Supaul	10.08	05	4202	-	-
<b>Total</b>	<b>120.38</b>	<b>74</b>	<b>50025</b>	<b>6534</b>	<b>-</b>

**APPENDIX- 3.11**  
(Refer: Paragraph 3.10; Page- 103)

*Statement showing sanctioned posts and vacancy position*

Sl. No.	Grade	Name of Post	2007-08			2008-09		
			Sanctioned strength	Men-in-position	Vacant Post	Sanctioned strength	Men-in-position	Vacant Post
1	I	Additional District Magistrate	4	1	3	4	-	4
2	III	Stenographer	4	1	3	4	1	3
3	III	Divisional Assistant	4	4	-	4	3	1
4	III	Assistant/Head clerk	35	27	8	17	13 (9+4)	4
5	III	Assistant/ Clerk	34	29	5	47	40 (9+14+17)	7
6	III	Motorboat Driver	14	11	3	12	11	1
7	IV	Motorboat Khalasi	12	8	4	10	9	1
8	IV	Peon	35	21	14	26	20	6
9	III	Truck Driver	1	1	-	1	1	-
10	IV	Truck Khalasi	2	1	1	2	1	1
11	III	Typist/UDC	5	2	3	2	1	1
		<b>Total</b>	<b>150</b>	<b>106</b>	<b>44</b>	<b>129</b>	<b>100</b>	<b>29</b>



**APPENDIX-3.12**  
**(Refer: Paragraph-3.11; Page- 104)**

***Statement showing monitoring-cum-vigilance committees for supervision of relief works***

- (A) District level relief monitoring-cum-vigilance committee**
- a) Incharge Minister, District Twenty Point Programme Implementation Committee - President
  - b) Chairman, District Board –Member
  - c) All honourable MP, MLA, MLC and Block Chief under District--Member
  - d) One member of each political parties –Member
  - e) District Magistrate –Member Secretary
  - f) District level officer of all departments –Member
- (B) Block level relief monitoring-cum-vigilance committee**
- a) Chief of Block Panchayat Committee
  - b) MP, MLA and Mukhiyas –Member
  - c) One member of each political parties –Member
  - d) Circle Officer –Member Secretary
  - e) Block level officer of all departments –Member
- (C) Panchayat level relief monitoring-cum-vigilance committee**
- a) Mukhiya -- President
  - b) Member of Panchayat Ward –Member
  - c) Nearest defeating candidates for mukhiya post in last election –Member
  - d) One member of each political parties –Member
  - e) Member of Panchayat Committee who is resident in panchayat area – Member
  - f) Panchayat Sevak/Revenue Clerk –Member Secretary
- (D) Urban local bodies level relief monitoring-cum-vigilance committee**
- a) President/Vice- President of Municipal Corporation/Nagar Parishad/Nagar Panchayat - President
  - b) Ward member of Municipal Corporation/Nagar Parishad/Nagar Panchayat –Member
  - c) Nearest defeating candidates for ward member post of Nagar Parishad/Nagar Ward/Nagar Panchayat in last election –Member
  - d) One member of each political parties –Member
  - e) Executive Officer of Municipal Corporation –Member Secretary