

**OFFICE OF THE ACCOUNTANT GENERAL (A&E)-II,
UTTAR PRADESH, PRAYAGRAJ**

No. AE-II/03/WM-I/Gr.II/2022-23/332/Vol.I/ 1201

dated: 05.08.2024

Office Order

Competent Authority is pleased to order two tier link charges in supersession of Office Order No. AE-II/03/WM-I/Gr.II/2022-23/332/Vol.I/1081 dated 28.08.2023, as per the list annexed, in respect of officials of Divisional Accountant cadre during their leave or otherwise.

This office order will be effective from the date of issue and till further orders.

Annexure: As stated above.


Deputy Accountant General (DACC)

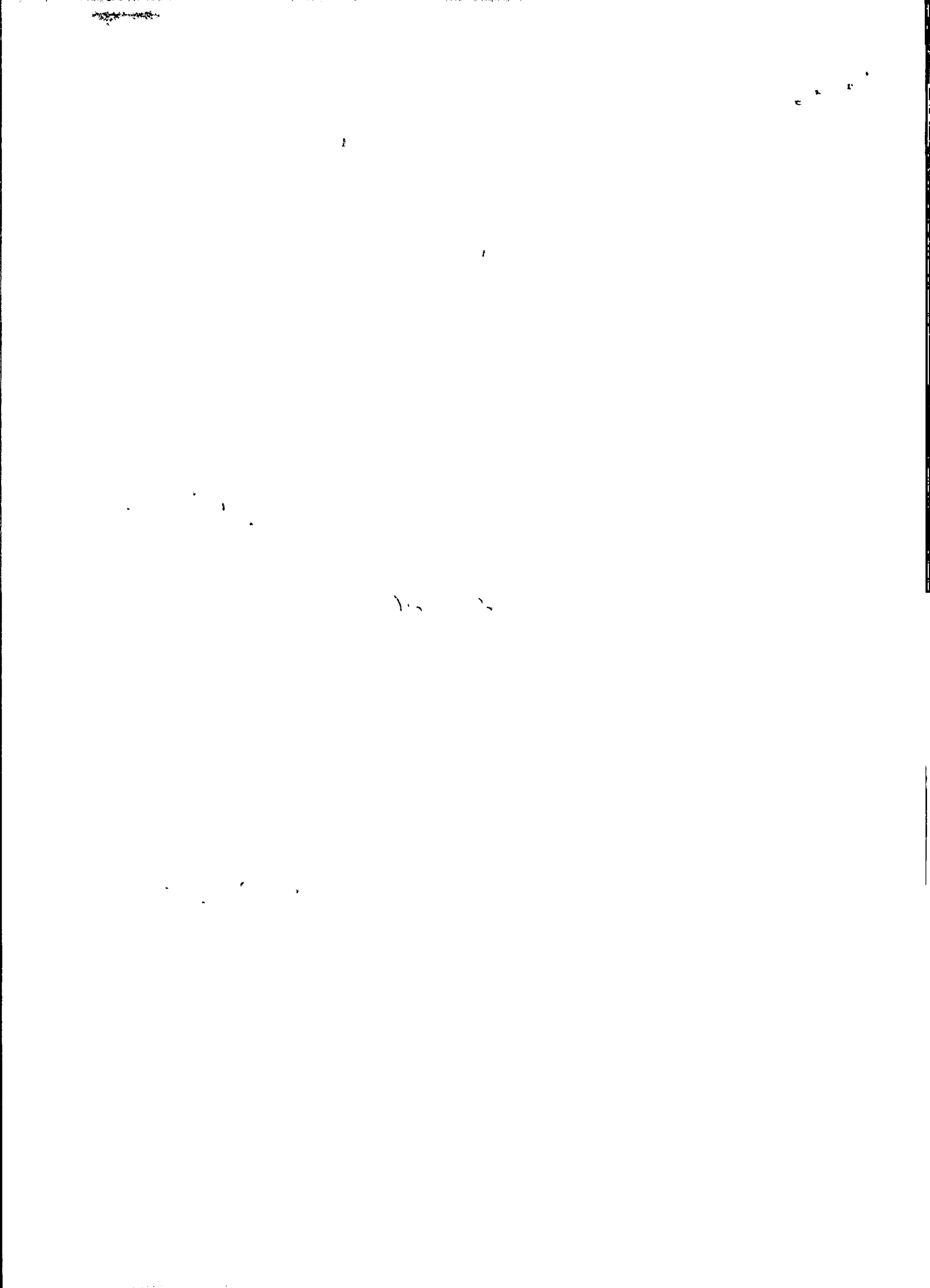
No. AE-II/03/WM-I/Gr.II/2022-23/332/Vol.I/ 255-260

of date

Copy forwarded to the following for information and necessary action:

1. Secretary to the Accountant General (A&E)-II, U.P., Prayagraj.
2. Sr. Accounts Officer (Computer Cell), Office of the A.G. (A&E)-II, U.P., Prayagraj to upload the office order on the office website.
3. All concerned officials/officers of Divisional Accountant cadre through office website.
4. Executive Engineers concerned through office website.
5. Senior Accounts Officer (WM-II), Office of the A.G. (A&E)-II, U.P., Prayagraj with the request to mention the link charge while sanctioning the leave of the officials of Divisional Accountant cadre.
6. Notice Board.


Sr. Accounts Officer/WM-I



Reference: Office Order No.: AE-11/03/AMA-1/61-11/2022-23/332/Vol.1/1201 dated: 05.08.2024

| Sl. No. | Particulars | Division | Grade | Particulars | Division | Grade | Particulars |
|---------|---|----------------|-------|---|----------------|-------|---|
| 1 | PROVINCIAL DIVISION, PWD, AGRA | AGRA | HD | CONSTRUCTION DIVISION-1(TTAJ TRIPOLIUM), PWD, AGRA | AGRA | HD | CONSTRUCTION DIVISION-2, PWD, AGRA |
| 2 | CONSTRUCTION DIVISION-1(TTAJ TRIPOLIUM), PWD, AGRA | AGRA | HD | CONSTRUCTION DIVISION-2, PWD, AGRA | AGRA | HD | RURAL ENGINEERING DEPARTMENT DIVISION, AGRA |
| 3 | CONSTRUCTION DIVISION-2, PWD, AGRA | AGRA | HD | RURAL ENGINEERING DEPARTMENT DIVISION, AGRA | AGRA | HD | PROVINCIAL DIVISION, PWD, AGRA |
| 4 | RURAL ENGINEERING DEPARTMENT DIVISION, AGRA | AGRA | HD | PROVINCIAL DIVISION, PWD, AGRA | AGRA | HD | CONSTRUCTION DIVISION-1(TTAJ TRIPOLIUM), PWD, AGRA |
| 5 | TJA BARRAGE CONSTRUCTION DIVISION, AGRA | AGRA | MD | TUBEWELL DIVISION, AGRA | AGRA | MD | PROVINCIAL DIVISION, PWD, AGRA |
| 6 | TUBEWELL DIVISION, AGRA | AGRA | MD | TJA BARRAGE CONSTRUCTION DIVISION, AGRA | AGRA | MD | CONSTRUCTION DIVISION-1(TTAJ TRIPOLIUM), PWD, AGRA |
| 7 | PRADHANMANTRI GRAM SADAK YOJNA, AGRA | AGRA | LD | TUBE WELL CONSTRUCTION DIVISION, AGRA | AGRA | LD | NATIONAL HIGHWAY DIVISION, PWD, AGRA |
| 8 | TUBE WELL CONSTRUCTION DIVISION, AGRA | AGRA | LD | NATIONAL HIGHWAY DIVISION, PWD, AGRA | AGRA | LD | MINOR IRRIGATION DIVISION, AGRA |
| 9 | NATIONAL HIGHWAY DIVISION, PWD, AGRA | AGRA | LD | MINOR IRRIGATION DIVISION, AGRA | AGRA | LD | ELECTRICAL & MECHANICAL DIVISION, PWD, AGRA |
| 10 | MINOR IRRIGATION DIVISION, AGRA | AGRA | LD | ELECTRICAL & MECHANICAL DIVISION, PWD, AGRA | AGRA | LD | LD AGRA CANAL, AGRA |
| 11 | ELECTRICAL & MECHANICAL DIVISION, PWD, AGRA | AGRA | LD | LD AGRA CANAL, AGRA | AGRA | LD | PRADHANMANTRI GRAM SADAK YOJNA, AGRA |
| 12 | PRADHANMANTRI GRAM SADAK YOJNA, AGRA | AGRA | LD | PRADHANMANTRI GRAM SADAK YOJNA, AGRA | AGRA | LD | TUBE WELL CONSTRUCTION DIVISION, AGRA |
| 13 | LD AGRA CANAL, AGRA | AGRA | LD | TUBE WELL CONSTRUCTION DIVISION, AGRA | AGRA | LD | NATIONAL HIGHWAY DIVISION, PWD, AGRA |
| 14 | PROVINCIAL DIVISION, PWD, ALIGARH | ALIGARH | VHD | WORLD BANK DIVISION II, PWD, ALIGARH | ALIGARH | VHD | CONSTRUCTION DIVISION-1, PWD, ALIGARH |
| 15 | WORLD BANK DIVISION II, PWD, ALIGARH | ALIGARH | VHD | PROVINCIAL DIVISION, PWD, ALIGARH | ALIGARH | VHD | RURAL ENGINEERING DEPARTMENT DIVISION, ALIGARH |
| 16 | CONSTRUCTION DIVISION-1, PWD, ALIGARH | ALIGARH | HD | RURAL ENGINEERING DEPARTMENT DIVISION, ALIGARH | ALIGARH | HD | NARORA LGC DIVISION, ALIGARH |
| 17 | RURAL ENGINEERING DEPARTMENT DIVISION, ALIGARH | ALIGARH | HD | NARORA LGC DIVISION, ALIGARH | ALIGARH | HD | MGCC 12, ALIGARH |
| 18 | RURAL LGC DIVISION, ALIGARH | ALIGARH | HD | MGCC 12, ALIGARH | ALIGARH | HD | ALIGARH GC DIVISION, ALIGARH |
| 19 | MGCC 12, ALIGARH | ALIGARH | HD | ALIGARH GC DIVISION, ALIGARH | ALIGARH | HD | CONSTRUCTION DIVISION-1, PWD, ALIGARH |
| 20 | ALIGARH GC DIVISION, ALIGARH | ALIGARH | HD | CONSTRUCTION DIVISION-1, PWD, ALIGARH | ALIGARH | HD | RURAL ENGINEERING DEPARTMENT DIVISION, ALIGARH |
| 21 | MINOR IRRIGATION DIVISION, ALIGARH | ALIGARH | MD | CONSTRUCTION DIVISION-1, PWD, ALIGARH | ALIGARH | MD | RURAL ENGINEERING DEPARTMENT DIVISION, ALIGARH |
| 22 | CONSTRUCTION DIVISION (BUILDING), PWD, ALIGARH | ALIGARH | LD | TUBEWELL DIVISION-1, ALIGARH | ALIGARH | LD | TUBEWELL DIVISION-2, ALIGARH |
| 23 | TUBEWELL DIVISION, ALIGARH | ALIGARH | LD | TUBEWELL DIVISION-1, ALIGARH | ALIGARH | LD | TY, MECHANICAL DIVISION, PWD, ALIGARH |
| 24 | TUBEWELL DIVISION-2, ALIGARH | ALIGARH | LD | TY, MECHANICAL DIVISION-2, ALIGARH | ALIGARH | LD | DRAINAGE DIVISION, ALIGARH |
| 25 | TY, MECHANICAL DIVISION, PWD, ALIGARH | ALIGARH | LD | DRAINAGE DIVISION, ALIGARH | ALIGARH | LD | I&P DIVISION, ALIGARH |
| 26 | DRAINAGE DIVISION, ALIGARH | ALIGARH | LD | I&P DIVISION, ALIGARH | ALIGARH | LD | TUBEWELL DIVISION-1, ALIGARH |
| 27 | I&P DIVISION, ALIGARH | ALIGARH | LD | TUBEWELL DIVISION-1, ALIGARH | ALIGARH | LD | TUBEWELL DIVISION-2, ALIGARH |
| 28 | PROVINCIAL DIVISION, PWD, AMBEDKAR NAGAR | AMBEDKAR NAGAR | VHD | CONSTRUCTION DIVISION, PWD, AMBEDKAR NAGAR | AMBEDKAR NAGAR | VHD | PRADHANMANTRI GRAM SADAK YOJNA, AMBEDKAR NAGAR |
| 29 | CONSTRUCTION DIVISION, PWD, AMBEDKAR NAGAR | AMBEDKAR NAGAR | VHD | PROVINCIAL DIVISION, PWD, AMBEDKAR NAGAR | AMBEDKAR NAGAR | VHD | IRRIGATION DIVISION, TANDA, AMBEDKAR NAGAR |
| 30 | PRADHANMANTRI GRAM SADAK YOJNA, AMBEDKAR NAGAR | AMBEDKAR NAGAR | MD | IRRIGATION DIVISION, TANDA, AMBEDKAR NAGAR | AMBEDKAR NAGAR | MD | RURAL ENGINEERING DEPARTMENT DIVISION, AMBEDKAR NAGAR |
| 31 | IRRIGATION DIVISION, TANDA, AMBEDKAR NAGAR | AMBEDKAR NAGAR | MD | RURAL ENGINEERING DEPARTMENT DIVISION, AMBEDKAR NAGAR | AMBEDKAR NAGAR | MD | PRADHANMANTRI GRAM SADAK YOJNA, AMBEDKAR NAGAR |
| 32 | RURAL ENGINEERING DEPARTMENT DIVISION, AMBEDKAR NAGAR | AMBEDKAR NAGAR | MD | PRADHANMANTRI GRAM SADAK YOJNA, AMBEDKAR NAGAR | AMBEDKAR NAGAR | MD | IRRIGATION DIVISION, TANDA, AMBEDKAR NAGAR |
| 33 | TUBEWELL DIVISION, AMBEDKAR NAGAR | AMBEDKAR NAGAR | LD | RURAL ENGINEERING DEPARTMENT DIVISION, AMBEDKAR NAGAR | AMBEDKAR NAGAR | LD | PRADHANMANTRI GRAM SADAK YOJNA, AMBEDKAR NAGAR |
| 34 | CONSTRUCTION DIVISION, PWD, GAURIGANJ, AMETHI | AMETHI | HD | PROVINCIAL DIVISION, PWD, GAURIGANJ, AMETHI | AMETHI | HD | RURAL ENGINEERING DEPARTMENT DIVISION, AMETHI |
| 35 | PROVINCIAL DIVISION, PWD, GAURIGANJ, AMETHI | AMETHI | HD | CONSTRUCTION DIVISION, PWD, GAURIGANJ, AMETHI | AMETHI | HD | CONSTRUCTION DIVISION, PWD, GAURIGANJ, AMETHI |
| 36 | PRADHANMANTRI GRAM SADAK YOJNA, AMETHI | AMETHI | MD | RURAL ENGINEERING DEPARTMENT DIVISION, AMETHI | AMETHI | MD | PROVINCIAL DIVISION, PWD, GAURIGANJ, AMETHI |
| 37 | RURAL ENGINEERING DEPARTMENT DIVISION, AMETHI | AMETHI | MD | PRADHANMANTRI GRAM SADAK YOJNA, AMETHI | AMETHI | MD | PROVINCIAL DIVISION, PWD, GAURIGANJ, AMETHI |
| 38 | SSK 41, GAURIGANJ, AMETHI | AMETHI | LD | TUBE WELL DIVISION, GAURIGANJ, AMETHI | AMETHI | LD | PRADHANMANTRI GRAM SADAK YOJNA, AMETHI |
| 39 | TUBE WELL DIVISION, GAURIGANJ, AMETHI | AMETHI | LD | SSK 41, GAURIGANJ, AMETHI | AMETHI | LD | RURAL ENGINEERING DEPARTMENT DIVISION, AMETHI |
| 40 | PROVINCIAL DIVISION, PWD, AMROHA | AMROHA | VHD | MGCC DIV-4, AMROHA | AMROHA | VHD | CONSTRUCTION DIVISION, PWD, AMROHA |
| 41 | MGCC DIV-4, AMROHA | AMROHA | VHD | CONSTRUCTION DIVISION, PWD, AMROHA | AMROHA | VHD | MGCC DIV-3, AMROHA |
| 42 | CONSTRUCTION DIVISION, PWD, AMROHA | AMROHA | HD | MGCC DIV-3, AMROHA | AMROHA | HD | MGCC DIV-4, AMROHA |
| 43 | MGCC DIV-3, AMROHA | AMROHA | HD | MGCC DIV-4, AMROHA | AMROHA | HD | CONSTRUCTION DIVISION, PWD, AMROHA |
| 44 | PRADHANMANTRI GRAM SADAK YOJNA, AMROHA | AMROHA | MD | CONSTRUCTION DIVISION, PWD, AMROHA | AMROHA | MD | MGCC DIV-3, AMROHA |
| 45 | RURAL ENGINEERING DEPARTMENT DIVISION, AMROHA | AMROHA | LD | TUBE WELL DIVISION, AMROHA | AMROHA | LD | MGCC DIV-4, AMROHA |
| 46 | TUBE WELL DIVISION, AMROHA | AMROHA | LD | RURAL ENGINEERING DEPARTMENT DIVISION, AMROHA | AMROHA | LD | CONSTRUCTION DIVISION, PWD, AMROHA |
| 47 | PROVINCIAL DIVISION, PWD, AURAIYA | AURAIYA | HD | CONSTRUCTION DIVISION, PWD, DIBYAPUR, AURAIYA | AURAIYA | HD | IRRIGATION DIVISION, DIBYAPUR, AURAIYA |
| 48 | CONSTRUCTION DIVISION, PWD, AURAIYA | AURAIYA | MD | IRRIGATION DIVISION, DIBYAPUR, AURAIYA | AURAIYA | MD | PROVINCIAL DIVISION, PWD, AURAIYA |
| 49 | IRRIGATION DIVISION, DIBYAPUR, AURAIYA | AURAIYA | MD | CONSTRUCTION DIVISION, PWD, DIBYAPUR, AURAIYA | AURAIYA | MD | PROVINCIAL DIVISION, PWD, AURAIYA |
| 50 | RURAL ENGINEERING DEPARTMENT DIVISION, AURAIYA | AURAIYA | LD | PRADHANMANTRI GRAM SADAK YOJNA, AURAIYA | AURAIYA | LD | TUBEWELL DIVISION, AURAIYA |
| 51 | PRADHANMANTRI GRAM SADAK YOJNA, AURAIYA | AURAIYA | LD | TUBEWELL DIVISION, AURAIYA | AURAIYA | LD | RURAL ENGINEERING DEPARTMENT DIVISION, AURAIYA |
| 52 | TUBEWELL DIVISION, AURAIYA | AURAIYA | LD | RURAL ENGINEERING DEPARTMENT DIVISION, AURAIYA | AURAIYA | LD | PRADHANMANTRI GRAM SADAK YOJNA, AURAIYA |

| | | | | | |
|-----|--|-----------|-----|---|--|
| 53 | PROVINCIAL DIVISION, PWD, AYODHYA | AYODHYA | VHD | CONSTRUCTION DIVISION-2, PWD, AYODHYA | SARYU CANAL CONSTRUCTION DIVISION, AYODHYA |
| 54 | CONSTRUCTION DIVISION-2, PWD, AYODHYA | AYODHYA | VHD | PROVINCIAL DIVISION, PWD, AYODHYA | CONSTRUCTION DIVISION-4, PWD, AYODHYA |
| 55 | SARYU CANAL CONSTRUCTION DIVISION, AYODHYA | AYODHYA | HD | CONSTRUCTION DIVISION-4, PWD, AYODHYA | RURAL ENGINEERING DEPARTMENT DIVISION, AYODHYA |
| 56 | CONSTRUCTION DIVISION-4, PWD, AYODHYA | AYODHYA | HD | RURAL ENGINEERING DEPARTMENT DIVISION, AYODHYA | MINOR IRRIGATION DIVISION, AYODHYA |
| 57 | RURAL ENGINEERING DEPARTMENT DIVISION, AYODHYA | AYODHYA | HD | MINOR IRRIGATION DIVISION, AYODHYA | SARYU CANAL CONSTRUCTION DIVISION, AYODHYA |
| 58 | MINOR IRRIGATION DIVISION, AYODHYA | AYODHYA | HD | FLOOD WORKS DIVISION, AYODHYA | CONSTRUCTION DIVISION-4, PWD, AYODHYA |
| 59 | IRRIGATION DIVISION, AYODHYA | AYODHYA | MD | E & M DIVISION, PWD, AYODHYA | E & M DIVISION, PWD, AYODHYA |
| 60 | FLOOD WORKS DIVISION, AYODHYA | AYODHYA | MD | TUBE WELL CONSTRUCTION DIVISION, AYODHYA | TUBE WELL CONSTRUCTION DIVISION, AYODHYA |
| 61 | E & M DIVISION, PWD, AYODHYA | AYODHYA | MD | IRRIGATION DIVISION, AYODHYA | IRRIGATION DIVISION, AYODHYA |
| 62 | TUBE WELL CONSTRUCTION DIVISION, AYODHYA | AYODHYA | MD | TUBE WELL DIVISION-2, AYODHYA | FLOOD WORKS DIVISION, AYODHYA |
| 63 | CONSTRUCTION DIVISION-3, PWD, AYODHYA | AYODHYA | LD | LIFT IRRIGATION DIVISION, AYODHYA | LIFT IRRIGATION DIVISION, AYODHYA |
| 64 | TUBE WELL DIVISION-2, AYODHYA | AYODHYA | LD | GROUND WATER DIVISION, AYODHYA | GROUND WATER DIVISION, AYODHYA |
| 65 | LIFT IRRIGATION DIVISION, AYODHYA | AYODHYA | LD | CONSTRUCTION DIVISION-3, PWD, AYODHYA | CONSTRUCTION DIVISION-3, PWD, AYODHYA |
| 66 | GROUND WATER DIVISION, AYODHYA | AYODHYA | LD | CONSTRUCTION DIVISION-5, PWD, AZAMGARH | TUBE WELL DIVISION-2, AYODHYA |
| 67 | CONSTRUCTION DIVISION, PWD, AZAMGARH | AZAMGARH | VHD | CONSTRUCTION DIVISION-5, PWD, AZAMGARH | CONSTRUCTION DIVISION-2, PWD, AZAMGARH |
| 68 | CONSTRUCTION DIVISION-5, PWD, AZAMGARH | AZAMGARH | VHD | CONSTRUCTION DIVISION, PWD, AZAMGARH | PROVINCIAL DIVISION, PWD, AZAMGARH |
| 69 | CONSTRUCTION DIVISION-2, PWD, AZAMGARH | AZAMGARH | VHD | CONSTRUCTION DIVISION, PWD, AZAMGARH | PROVINCIAL DIVISION, PWD, AZAMGARH |
| 70 | PROVINCIAL DIVISION, PWD, AZAMGARH | AZAMGARH | HD | PROVINCIAL DIVISION, PWD, AZAMGARH | PRADHANMANTRI GRAM SADAK YOJNA, AZAMGARH |
| 71 | PRADHANMANTRI GRAM SADAK YOJNA, AZAMGARH | AZAMGARH | HD | PRADHANMANTRI GRAM SADAK YOJNA, AZAMGARH | CONSTRUCTION DIVISION-2, PWD, AZAMGARH |
| 72 | RURAL ENGINEERING DEPARTMENT DIVISION, AZAMGARH | AZAMGARH | HD | CONSTRUCTION DIVISION-2, PWD, AZAMGARH | CONSTRUCTION DIVISION-2, PWD, AZAMGARH |
| 73 | FLOOD DIVISION, AZAMGARH | AZAMGARH | MD | FLOOD DIVISION, AZAMGARH | PROVINCIAL DIVISION, PWD, AZAMGARH |
| 74 | SSK 32, AZAMGARH | AZAMGARH | MD | SSK 32, AZAMGARH | SSK 32, AZAMGARH |
| 75 | MINOR IRRIGATION DIVISION, AZAMGARH | AZAMGARH | MD | MINOR IRRIGATION DIVISION, AZAMGARH | MINOR IRRIGATION DIVISION, AZAMGARH |
| 76 | SSK 23, AZAMGARH | AZAMGARH | MD | MINOR IRRIGATION DIVISION, AZAMGARH | RURAL ENGINEERING DEPARTMENT DIVISION, AZAMGARH |
| 77 | E&M DIVISION, PWD, AZAMGARH | AZAMGARH | MD | RURAL ENGINEERING DEPARTMENT DIVISION, AZAMGARH | RURAL ENGINEERING DEPARTMENT DIVISION, AZAMGARH |
| 78 | TUBEWELL DIVISION, AZAMGARH | AZAMGARH | LD | E&M DIVISION, PWD, AZAMGARH | FLOOD DIVISION, AZAMGARH |
| 79 | GROUND WATER DIVISION, AZAMGARH | AZAMGARH | LD | TUBEWELL DIVISION, AZAMGARH | TUBEWELL DIVISION, AZAMGARH |
| 80 | PROVINCIAL DIVISION, PWD, BAGPAT | AZAMGARH | LD | SSK 23, AZAMGARH | SSK 23, AZAMGARH |
| 81 | RURAL ENGINEERING DEPARTMENT DIVISION, BAGPAT | BAGPAT | LD | E&M DIVISION, PWD, AZAMGARH | E&M DIVISION, PWD, AZAMGARH |
| 82 | IRRIGATION DIVISION, BARAUT, BAGPAT | BAGPAT | MD | RURAL ENGINEERING DEPARTMENT DIVISION, BAGPAT | TUBEWELL DIVISION, AZAMGARH |
| 83 | TUBE WELL DIVISION WEST, BAGPAT | BAGPAT | MD | IRRIGATION DIVISION, BARAUT, BAGPAT | IRRIGATION DIVISION, BARAUT, BAGPAT |
| 84 | CONSTRUCTION DIVISION-1, PWD, BAHRACH | BAGPAT | MD | PROVINCIAL DIVISION, PWD, BAGPAT | PROVINCIAL DIVISION, PWD, BAGPAT |
| 85 | PROVINCIAL DIVISION, PWD, BAHRACH | BAHRACH | LD | PROVINCIAL DIVISION, PWD, BAGPAT | RURAL ENGINEERING DEPARTMENT DIVISION, BAGPAT |
| 86 | SNK 4, KALPIPARA, BAHRACH | BAHRACH | VHD | PROVINCIAL DIVISION, PWD, BAHRACH | RURAL ENGINEERING DEPARTMENT DIVISION, BAGPAT |
| 87 | PRADHANMANTRI GRAM SADAK YOJNA, BAHRACH | BAHRACH | VHD | CONSTRUCTION DIVISION-1, PWD, BAHRACH | SNK 4, KALPIPARA, BAHRACH |
| 88 | SAYU DRAINAGE DIVISION-1, BAHRACH | BAHRACH | HD | PRADHANMANTRI GRAM SADAK YOJNA, BAHRACH | PRADHANMANTRI GRAM SADAK YOJNA, BAHRACH |
| 89 | RURAL ENGINEERING DEPARTMENT DIVISION, BAHRACH | BAHRACH | HD | SNK 4, KALPIPARA, BAHRACH | CONSTRUCTION DIVISION-1, PWD, BAHRACH |
| 90 | SNK 7, KALPIPARA, BAHRACH | BAHRACH | HD | RURAL ENGINEERING DEPARTMENT DIVISION, BAHRACH | PROVINCIAL DIVISION, PWD, BAHRACH |
| 91 | SNK 3, KALPIPARA, BAHRACH | BAHRACH | MD | SNK 7, KALPIPARA, BAHRACH | SNK 7, KALPIPARA, BAHRACH |
| 92 | SNK 5, BAHRACH | BAHRACH | MD | SNK 3, KALPIPARA, BAHRACH | SNK 3, KALPIPARA, BAHRACH |
| 93 | SNK 1, NANPARA, BAHRACH | BAHRACH | MD | SAYU DRAINAGE DIVISION-1, BAHRACH | SAYU DRAINAGE DIVISION-1, BAHRACH |
| 94 | CD-3 (Indo Nepal Border), PWD, BAHRACH | BAHRACH | LD | SNK 1, NANPARA, BAHRACH | RURAL ENGINEERING DEPARTMENT DIVISION, BAHRACH |
| 95 | TUBEWELL DIVISION, BAHRACH | BAHRACH | LD | CD-3 (Indo Nepal Border), PWD, BAHRACH | CD-3 (Indo Nepal Border), PWD, BAHRACH |
| 96 | SNK, NANPARA, BAHRACH | BAHRACH | LD | TUBEWELL DIVISION, BAHRACH | TUBEWELL DIVISION, BAHRACH |
| 97 | SNK 1, KALPIPARA, BAHRACH | BAHRACH | LD | SNK, NANPARA, BAHRACH | SNK, NANPARA, BAHRACH |
| 98 | TUBEWELL DIVISION, NANPARA, BAHRACH | BAHRACH | LD | SNK 1, KALPIPARA, BAHRACH | SNK 1, KALPIPARA, BAHRACH |
| 99 | VAHYA SAHAYATIT PARIYOJNA, PWD, BAHRACH | BAHRACH | LD | TUBEWELL DIVISION, NANPARA, BAHRACH | TUBEWELL DIVISION, NANPARA, BAHRACH |
| 100 | CONSTRUCTION DIVISION, PWD, BALLIA | BAHRACH | LD | VAHYA SAHAYATIT PARIYOJNA, PWD, BAHRACH | VAHYA SAHAYATIT PARIYOJNA, PWD, BAHRACH |
| 101 | PROVINCIAL DIVISION, PWD, BALLIA | BALLIA | LD | SNK 5, BAHRACH | SNK 5, BAHRACH |
| 102 | FLOOD DIVISION, BALLIA | BALLIA | VHD | PROVINCIAL DIVISION, PWD, BAHRACH | SNK 1, NANPARA, BAHRACH |
| 103 | RURAL ENGINEERING DEPARTMENT DIVISION, BALLIA | BALLIA | VHD | FLOOD DIVISION, BALLIA | FLOOD DIVISION, BALLIA |
| 104 | IRRIGATION DIVISION, BALLIA | BALLIA | VHD | CONSTRUCTION DIVISION, PWD, BALLIA | CONSTRUCTION DIVISION, PWD, BALLIA |
| 105 | TUBEWELL DIVISION, BALLIA | BALLIA | HD | CONSTRUCTION DIVISION, PWD, BALLIA | PROVINCIAL DIVISION, PWD, BALLIA |
| 106 | CONSTRUCTION DIVISION, BALLIA | BALLIA | MD | IRRIGATION DIVISION, PWD, BALLIA | PROVINCIAL DIVISION, PWD, BALLIA |
| 107 | BALRAMPUR | BALLIA | LD | RURAL ENGINEERING DEPARTMENT DIVISION, BALLIA | FLOOD DIVISION, BALLIA |
| 108 | CONSTRUCTION DIVISION, PWD, BALRAMPUR | BALRAMPUR | LD | CONSTRUCTION DIVISION, PWD, BALLIA | RURAL ENGINEERING DEPARTMENT DIVISION, BALLIA |
| 109 | Rapli Canal Construction Division-2, Tulsipur, Balrampur | BALRAMPUR | VHD | PROVINCIAL DIVISION, PWD, BALRAMPUR | Rural Canal Construction Division-2, Tulsipur, Balrampur |
| 110 | Rapli Canal Construction Division-1, Tulsipur, Balrampur | BALRAMPUR | VHD | CONSTRUCTION DIVISION, PWD, BALRAMPUR | CONSTRUCTION DIVISION, PWD, BALRAMPUR |
| 111 | CONSTRUCTION DIVISION, PWD, BALRAMPUR | BALRAMPUR | HD | FLOOD DIVISION, BALRAMPUR | CONSTRUCTION DIVISION, PWD, BALRAMPUR |

| | | | | | |
|-----|--|-----------|-----|--|---|
| 110 | FLOOD DIVISION, BALRAMPUR | BALRAMPUR | HD | Rajati Canal Construction Division-1, Tuispur, Balampur | PROVINCIAL DIVISION, PWD, BALRAMPUR |
| 111 | RURAL ENGINEERING DEPARTMENT DIVISION, BALRAMPUR | BALRAMPUR | MD | PRADHAMANTRI GRAM SADAK YOJNA, BALRAMPUR | Rajati Canal Construction Division-1, Tuispur, Balampur |
| 112 | PRADHAMANTRI GRAM SADAK YOJNA, BALRAMPUR | BALRAMPUR | MD | RURAL ENGINEERING DEPARTMENT DIVISION, BALRAMPUR | FLOOD DIVISION, BALRAMPUR |
| 113 | SNK-1, BALRAMPUR | BALRAMPUR | LD | CHITTOGARH DAM CONSTRUCTION DIVISION, BALRAMPUR | SARVU CANAL DIVISION-4, BALRAMPUR |
| 114 | CHITTOGARH DAM CONSTRUCTION DIVISION, BALRAMPUR | BALRAMPUR | LD | SARVU CANAL DIVISION-4, BALRAMPUR | SARVU DRAINAGE DIVISION-2, BALRAMPUR |
| 115 | SARVU CANAL DIVISION-4, BALRAMPUR | BALRAMPUR | LD | SARVU DRAINAGE DIVISION-2, BALRAMPUR | TUBEWELL DIVISION, BALRAMPUR |
| 116 | SARVU DRAINAGE DIVISION-2, BALRAMPUR | BALRAMPUR | LD | TUBEWELL DIVISION, BALRAMPUR | SNK-3, BALRAMPUR |
| 117 | TUBEWELL DIVISION, BALRAMPUR | BALRAMPUR | LD | SARVU NAHAR KHAND-7, BALRAMPUR | SARVU NAHAR KHAND-7, BALRAMPUR |
| 118 | SNK-3, BALRAMPUR | BALRAMPUR | LD | C.D.-1 (Indo Nepal Border), PWD, BALRAMPUR | C.D.-1 (Indo Nepal Border), PWD, BALRAMPUR |
| 119 | SARVU NAHAR KHAND-7, BALRAMPUR | BALRAMPUR | LD | SNK-1, BALRAMPUR | CHITTOGARH DAM CONSTRUCTION DIVISION, BALRAMPUR |
| 120 | C.D.-1 (Indo Nepal Border), PWD, BALRAMPUR | BALRAMPUR | LD | PROVINCIAL DIVISION, PWD, BANDA | CONSTRUCTION DIVISION-2, PWD, BANDA |
| 121 | CONSTRUCTION DIVISION-1, PWD, BANDA | BANDA | VHD | CONSTRUCTION DIVISION-1, PWD, BANDA | RURAL ENGINEERING DEPARTMENT DIVISION, BANDA |
| 122 | PROVINCIAL DIVISION, PWD, BANDA | BANDA | HD | CONSTRUCTION DIVISION-1, PWD, BANDA | PROVINCIAL DIVISION, PWD, BANDA |
| 123 | CONSTRUCTION DIVISION-2, PWD, BANDA | BANDA | MD | MINOR IRRIGATION DIVISION, BANDA | CONSTRUCTION DIVISION-2, PWD, BANDA |
| 124 | RURAL ENGINEERING DEPARTMENT DIVISION, BANDA | BANDA | MD | RURAL ENGINEERING DEPARTMENT DIVISION, BANDA | CONSTRUCTION DIVISION-2, PWD, BANDA |
| 125 | MINOR IRRIGATION DIVISION, BANDA | BANDA | LD | TUBEWELL DIVISION, BANDA | IRRIGATION DIVISION-3, BANDA |
| 126 | KEN CANAL DIVISION, BANDA | BANDA | LD | IRRIGATION DIVISION-3, BANDA | NATIONAL HIGHWAY DIVISION, PWD, BANDA |
| 127 | CONSTRUCTION DIVISION (BHAWANI), PWD, BANDA | BANDA | LD | MINOR LIFT CANAL DIVISION, PWD, BANDA | MINOR LIFT CANAL DIVISION, BANDA |
| 128 | TUBEWELL DIVISION, BANDA | BANDA | LD | NATIONAL HIGHWAY DIVISION, PWD, BANDA | MINOR LIFT CANAL DIVISION, BANDA |
| 129 | IRRIGATION DIVISION-3, BANDA | BANDA | LD | MINOR LIFT CANAL DIVISION, BANDA | KENBETWA LINK CANAL CONSTRUCTION DIVISION-1, BANDA |
| 130 | NATIONAL HIGHWAY DIVISION, PWD, BANDA | BANDA | LD | KENBETWA LINK CANAL CONSTRUCTION DIVISION-1, BANDA | KENBETWA LINK CANAL CONSTRUCTION DIVISION-2, BANDA |
| 131 | MINOR LIFT CANAL DIVISION, BANDA | BANDA | LD | KENBETWA LINK CANAL CONSTRUCTION DIVISION-2, BANDA | I&P DIVISION, BANDA |
| 132 | KENBETWA LINK CANAL CONSTRUCTION DIVISION-1, BANDA | BANDA | LD | I&P DIVISION, BANDA | GROUND WATER DIVISION, BANDA |
| 133 | KENBETWA LINK CANAL CONSTRUCTION DIVISION-2, BANDA | BANDA | LD | GROUND WATER DIVISION, BANDA | KEN CANAL DIVISION, BANDA |
| 134 | I&P DIVISION, BANDA | BANDA | LD | KEN CANAL DIVISION, BANDA | CONSTRUCTION DIVISION (BHAWANI), PWD, BANDA |
| 135 | GROUND WATER DIVISION, BANDA | BANDA | VHD | CONSTRUCTION DIVISION-1, PWD, BARABANKI | PROVINCIAL DIVISION, PWD, BARABANKI |
| 136 | CONSTRUCTION DIVISION-3, PWD, BARABANKI | BARABANKI | HD | PROVINCIAL DIVISION, PWD, BARABANKI | FLOOD WORKS DIVISION, BARABANKI |
| 137 | CONSTRUCTION DIVISION-1, PWD, BARABANKI | BARABANKI | HD | FLOOD WORKS DIVISION, BARABANKI | RURAL ENGINEERING DEPARTMENT DIVISION, BARABANKI |
| 138 | PROVINCIAL DIVISION, PWD, BARABANKI | BARABANKI | HD | RURAL ENGINEERING DEPARTMENT DIVISION, BARABANKI | CONSTRUCTION DIVISION-1, PWD, BARABANKI |
| 139 | FLOOD WORKS DIVISION, BARABANKI | BARABANKI | HD | RURAL ENGINEERING DEPARTMENT DIVISION, BARABANKI | PROVINCIAL DIVISION, PWD, BARABANKI |
| 140 | RURAL ENGINEERING DEPARTMENT DIVISION, BARABANKI | BARABANKI | MD | FLOOD WORKS DIVISION, BARABANKI | RURAL ENGINEERING DEPARTMENT DIVISION, BARABANKI |
| 141 | SARDA CANAL DIVISION, BARABANKI | BARABANKI | LD | TUBEWELL DIVISION-4, BARABANKI | SARDA CANAL DIVISION, BARABANKI |
| 142 | SSK-28, HAJDARGARH, BARABANKI | BARABANKI | LD | PROVINCIAL DIVISION, PWD, BARABANKI | PRADHAMANTRI GRAM SADAK YOJNA, BARABANKI |
| 143 | TUBEWELL DIVISION-1, BARABANKI | BARABANKI | HD | PROVINCIAL DIVISION, PWD, BARABANKI | NATIONAL HIGHWAY (R C) DIVISION, BARABANKI |
| 144 | CONSTRUCTION DIVISION (BUILDING), PWD, BARABANKI | BARABANKI | HD | NATIONAL HIGHWAY (R C) DIVISION, BARABANKI | CONSTRUCTION DIVISION-1, PWD, BARABANKI |
| 145 | PROVINCIAL DIVISION, PWD, BARABANKI | BARABANKI | HD | CONSTRUCTION DIVISION (BUILDING), PWD, BARABANKI | PROVINCIAL DIVISION, PWD, BARABANKI |
| 146 | PRADHAMANTRI GRAM SADAK YOJNA, BARABANKI | BARABANKI | HD | CONSTRUCTION DIVISION-1, PWD, BARABANKI | CONSTRUCTION DIVISION-1, PWD, BARABANKI |
| 147 | NATIONAL HIGHWAY (R C) DIVISION, BARABANKI | BARABANKI | HD | RURAL ENGINEERING DEPARTMENT DIVISION, BARABANKI | CONSTRUCTION DIVISION-1, PWD, BARABANKI |
| 148 | CONSTRUCTION DIVISION-1, PWD, BARABANKI | BARABANKI | MD | RURAL ENGINEERING DEPARTMENT DIVISION, BARABANKI | HEAD WORK SHARDA CANAL DIVISION, BARABANKI |
| 149 | IRRIGATION WORKSHOP DIVISION, BARABANKI | BARABANKI | MD | MINOR IRRIGATION DIVISION, BARABANKI | MINOR IRRIGATION DIVISION, BARABANKI |
| 150 | RURAL ENGINEERING DEPARTMENT DIVISION, BARABANKI | BARABANKI | MD | HEAD WORK SHARDA CANAL DIVISION, BARABANKI | FLOOD DIVISION, BARABANKI |
| 151 | R KHAND CANAL DIVISION, BARABANKI | BARABANKI | MD | IRRIGATION WORKSHOP DIVISION, BARABANKI | RURAL ENGINEERING DEPARTMENT DIVISION, BARABANKI |
| 152 | MINOR IRRIGATION DIVISION, BARABANKI | BARABANKI | MD | TUBEWELL DIVISION-4I, BARABANKI | TUBEWELL DIVISION-4I, BARABANKI |
| 153 | HEAD WORK SHARDA CANAL DIVISION, BARABANKI | BARABANKI | MD | TUBEWELL DIVISION-4I, BARABANKI | IRRIGATION DIVISION, BARABANKI |
| 154 | FLOOD DIVISION, BARABANKI | BARABANKI | MD | TUBEWELL DIVISION-4I, BARABANKI | IRRIGATION DIVISION, BARABANKI |
| 155 | E&M DIVISION-1, PWD, BARABANKI | BARABANKI | LD | I&P DIVISION (WR), BARABANKI | E&M DIVISION-1, PWD, BARABANKI |
| 156 | TUBEWELL DIVISION-4I, BARABANKI | BARABANKI | LD | Badam Irrigation Project Construction Division, Bareilly | TUBEWELL DIVISION-4I, BARABANKI |
| 157 | TUBEWELL DIVISION-4I, BARABANKI | BARABANKI | LD | CONSTRUCTION DIVISION-1, PWD, BASTI | FLOOD WORKS DIVISION-4, BASTI |
| 158 | IRRIGATION DIVISION, BARABANKI | BARABANKI | LD | CONSTRUCTION DIVISION-1, PWD, BASTI | CONSTRUCTION DIVISION-1, PWD, BASTI |
| 159 | I&P DIVISION (WR), BARABANKI | BARABANKI | LD | NATIONAL HIGHWAY DIVISION, PWD, BASTI | SNK-4, BASTI |
| 160 | Badam Irrigation Project Construction Division, Bareilly | BARABANKI | LD | NATIONAL HIGHWAY DIVISION, PWD, BASTI | RURAL ENGINEERING DEPARTMENT DIVISION, BASTI |
| 161 | PROVINCIAL DIVISION, PWD, BASTI | BASTI | VHD | SNK-4, BASTI | NATIONAL HIGHWAY DIVISION, PWD, BASTI |
| 162 | CONSTRUCTION DIVISION-1, PWD, BASTI | BASTI | VHD | RURAL ENGINEERING DEPARTMENT DIVISION, BASTI | NATIONAL HIGHWAY DIVISION, PWD, BASTI |
| 163 | FLOOD WORKS DIVISION-4, BASTI | BASTI | VHD | | |
| 164 | RURAL ENGINEERING DEPARTMENT DIVISION, BASTI | BASTI | HD | | |
| 165 | NATIONAL HIGHWAY DIVISION, PWD, BASTI | BASTI | HD | | |
| 166 | SNK-4, BASTI | BASTI | HD | | |

| | | | | | |
|-----|---|-------------|-----|---|---|
| 167 | MINOR IRRIGATION DIVISION, BASTI | BASTI | MD | RURAL ENGINEERING DEPARTMENT DIVISION, BASTI | NATIONAL HIGHWAY DIVISION, PWD, BASTI |
| 168 | CONSTRUCTION DIVISION (BHAWAN), PWD, BASTI | BASTI | LD | TUBEWELL DIVISION-I, BASTI | QUALITY CONTROL DIVISION, BASTI |
| 169 | TUBEWELL DIVISION-I, BASTI | BASTI | LD | QUALITY CONTROL DIVISION, BASTI | VAHYA SAHAYATI PARIYOJNA, PWD, BASTI |
| 170 | I&P (WB) DIVISION, BASTI | BASTI | LD | VAHYA SAHAYATI PARIYOJNA, PWD, BASTI | CONSTRUCTION DIVISION (BHAWAN), PWD, BASTI |
| 171 | QUALITY CONTROL DIVISION, BASTI | BASTI | LD | CONSTRUCTION DIVISION (BHAWAN), PWD, BASTI | TUBEWELL DIVISION-I, BASTI |
| 172 | VAHYA SAHAYATI PARIYOJNA, PWD, BASTI | BASTI | VHD | RURAL ENGINEERING DEPARTMENT DIVISION, GYANPUR, BHADOHI | GYANPUR CANAL DIVISION, BHADOHI |
| 173 | PROVINCIAL DIVISION, GYANPUR, BHADOHI | BHADOHI | | | |
| 174 | RURAL ENGINEERING DEPARTMENT DIVISION, GYANPUR, BHADOHI | BHADOHI | MD | PROVINCIAL DIVISION, GYANPUR, BHADOHI | TUBEWELL MAINTENANCE DIVISION, BHADOHI |
| 175 | GYANPUR CANAL DIVISION, BHADOHI | BHADOHI | LD | TUBEWELL MAINTENANCE DIVISION, BHADOHI | RURAL ENGINEERING DEPARTMENT DIVISION, GYANPUR, BHADOHI |
| 176 | TUBEWELL MAINTENANCE DIVISION, BHADOHI | BHADOHI | LD | GYANPUR CANAL DIVISION, BHADOHI | RURAL ENGINEERING DEPARTMENT DIVISION, GYANPUR, BHADOHI |
| 177 | CONSTRUCTION DIVISION-2, PWD, BIJNOR | BIJNOR | VHD | PROVINCIAL DIVISION, PWD, BIJNOR | MGCC DIVISION-5, BIJNOR |
| 178 | PROVINCIAL DIVISION, PWD, BIJNOR | BIJNOR | VHD | CONSTRUCTION DIVISION-2, PWD, BIJNOR | MGCC DIVISION-7, BIJNOR |
| 179 | MGCC DIVISION-5, BIJNOR | BIJNOR | HD | MGCC DIVISION-7, BIJNOR | CONSTRUCTION DIVISION-2, PWD, BIJNOR |
| 180 | MGCC DIVISION-7, BIJNOR | BIJNOR | HD | MGCC DIVISION-5, BIJNOR | PROVINCIAL DIVISION, PWD, BIJNOR |
| 181 | PRADHANMANTRI GRAM SADAK YOJNA, BIJNOR | BIJNOR | MD | RURAL ENGINEERING DEPARTMENT DIVISION, BIJNOR | AF JAL GARRH IRRIGATION DIVISION, DHAMPUR, BIJNOR |
| 182 | RURAL ENGINEERING DEPARTMENT DIVISION, BIJNOR | BIJNOR | MD | AF JAL GARRH IRRIGATION DIVISION, DHAMPUR, BIJNOR | PRADHANMANTRI GRAM SADAK YOJNA, BIJNOR |
| 183 | AF JAL GARRH IRRIGATION DIVISION, DHAMPUR, BIJNOR | BIJNOR | MD | PRADHANMANTRI GRAM SADAK YOJNA, BIJNOR | RURAL ENGINEERING DEPARTMENT DIVISION, BIJNOR |
| 184 | IRRIGATION DIVISION, BIJNOR | BIJNOR | LD | TUBEWELL DIVISION-I, BIJNOR | EGCC DIVISION-6, NAZIBABAD, BIJNOR |
| 185 | TUBEWELL DIVISION-I, BIJNOR | BIJNOR | LD | EGCC DIVISION-6, NAZIBABAD, BIJNOR | CMD, KALAGARH, BIJNOR |
| 186 | EGCC DIVISION-6, NAZIBABAD, BIJNOR | BIJNOR | LD | CMD, KALAGARH, BIJNOR | EGCC DIVISION-4, BIJNOR |
| 187 | CMD, KALAGARH, BIJNOR | BIJNOR | LD | R.G. DAM, KALAGARH, BIJNOR | R.G. DAM, KALAGARH, BIJNOR |
| 188 | R.G. DAM, KALAGARH, BIJNOR | BIJNOR | LD | EGCC DIVISION-4, BIJNOR | CSD-III, KALAGARH, BIJNOR |
| 189 | EGCC DIVISION-4, BIJNOR | BIJNOR | LD | CSD-III, KALAGARH, BIJNOR | IRRIGATION DIVISION, BIJNOR |
| 190 | CSD-III, KALAGARH, BIJNOR | BIJNOR | LD | IRRIGATION DIVISION, BIJNOR | TUBEWELL DIVISION-I, BIJNOR |
| 191 | CONSTRUCTION DIVISION, PWD, BUDAUN | BUDAUN | VHD | PROVINCIAL DIVISION, PWD, BUDAUN | RURAL ENGINEERING DEPARTMENT DIVISION, BUDAUN |
| 192 | PROVINCIAL DIVISION, PWD, BUDAUN | BUDAUN | HD | RURAL ENGINEERING DEPARTMENT DIVISION, BUDAUN | CONSTRUCTION DIVISION-2, PWD, BUDAUN |
| 193 | RURAL ENGINEERING DEPARTMENT DIVISION, BUDAUN | BUDAUN | HD | CONSTRUCTION DIVISION-2, PWD, BUDAUN | PROVINCIAL DIVISION, PWD, BUDAUN |
| 194 | CONSTRUCTION DIVISION-2, PWD, BUDAUN | BUDAUN | HD | PROVINCIAL DIVISION, PWD, BUDAUN | RURAL ENGINEERING DEPARTMENT DIVISION, BUDAUN |
| 195 | FLOOD DIVISION, BUDAUN | BUDAUN | MD | RURAL ENGINEERING DEPARTMENT DIVISION, BUDAUN | CONSTRUCTION DIVISION-2, PWD, BUDAUN |
| 196 | TUBEWELL CONSTRUCTION DIVISION, BUDAUN | BUDAUN | LD | TUBEWELL DIVISION-I, BUDAUN | TUBEWELL DIVISION-II, BUDAUN |
| 197 | TUBEWELL CONSTRUCTION DIVISION, BUDAUN | BUDAUN | LD | TUBEWELL DIVISION-I, BUDAUN | TUBEWELL DIVISION-III, BUDAUN |
| 198 | TUBEWELL DIVISION-I, BUDAUN | BUDAUN | LD | TUBEWELL DIVISION-III, BUDAUN | BUDAUN IRRIGATION CONSTRUCTION DIVISION, BUDAUN |
| 199 | TUBEWELL DIVISION-III, BUDAUN | BUDAUN | LD | BUDAUN IRRIGATION CONSTRUCTION DIVISION, BUDAUN | TUBEWELL CONSTRUCTION DIVISION, BUDAUN |
| 200 | BUDAUN IRRIGATION CONSTRUCTION DIVISION, BUDAUN | BUDAUN | LD | TUBEWELL CONSTRUCTION DIVISION, BUDAUN | TUBEWELL DIVISION-I, BUDAUN |
| 201 | MGCC DIVISION-10, BULANDSHAHR | BULANDSHAHR | VHD | PROVINCIAL DIVISION, PWD, BULANDSHAHR | MGCC DIVISION-8, BULANDSHAHR |
| 202 | PROVINCIAL DIVISION, PWD, BULANDSHAHR | BULANDSHAHR | HD | MGCC DIVISION-8, BULANDSHAHR | CONSTRUCTION DIVISION, PWD, KHURJA, BULANDSHAHR |
| 203 | MGCC DIVISION-8, BULANDSHAHR | BULANDSHAHR | HD | CONSTRUCTION DIVISION, PWD, KHURJA, BULANDSHAHR | BDGC DIVISION, BULANDSHAHR |
| 204 | CONSTRUCTION DIVISION, PWD, KHURJA, BULANDSHAHR | BULANDSHAHR | HD | BDGC DIVISION, BULANDSHAHR | CONSTRUCTION DIVISION-2, PWD, BULANDSHAHR |
| 205 | BDGC DIVISION, BULANDSHAHR | BULANDSHAHR | HD | CONSTRUCTION DIVISION-2, PWD, BULANDSHAHR | UMGGC DIVISION, KHURJA, BULANDSHAHR |
| 206 | CONSTRUCTION DIVISION-2, PWD, BULANDSHAHR | BULANDSHAHR | HD | UMGGC DIVISION, KHURJA, BULANDSHAHR | RURAL ENGINEERING DEPARTMENT DIVISION, BULANDSHAHR |
| 207 | UMGGC DIVISION, KHURJA, BULANDSHAHR | BULANDSHAHR | HD | RURAL ENGINEERING DEPARTMENT DIVISION, BULANDSHAHR | PROVINCIAL DIVISION, PWD, BULANDSHAHR |
| 208 | RURAL ENGINEERING DEPARTMENT DIVISION, BULANDSHAHR | BULANDSHAHR | HD | PROVINCIAL DIVISION, PWD, BULANDSHAHR | MGCC DIVISION-8, BULANDSHAHR |
| 209 | TUBEWELL DIVISION NORTH, BULANDSHAHR | BULANDSHAHR | LD | MGCC DIVISION-8, BULANDSHAHR | CONSTRUCTION DIVISION, PWD, KHURJA, BULANDSHAHR |
| 210 | PROVINCIAL DIVISION, PWD, CHANDAULI | CHANDAULI | VHD | CONSTRUCTION DIVISION, PWD, CHANDAULI | PRADHANMANTRI GRAM SADAK YOJNA, CHANDAULI |
| 211 | CONSTRUCTION DIVISION, PWD, CHANDAULI | CHANDAULI | HD | PROVINCIAL DIVISION, PWD, CHANDAULI | RURAL ENGINEERING DEPARTMENT DIVISION, CHANDAULI |
| 212 | PRADHANMANTRI GRAM SADAK YOJNA, CHANDAULI | CHANDAULI | MD | RURAL ENGINEERING DEPARTMENT DIVISION, CHANDAULI | CHANDRAPRABHA DAM DIVISION, CHANDAULI |
| 213 | RURAL ENGINEERING DEPARTMENT DIVISION, CHANDAULI | CHANDAULI | MD | CHANDRAPRABHA DAM DIVISION, CHANDAULI | PRADHANMANTRI GRAM SADAK YOJNA, CHANDAULI |
| 214 | CHANDRAPRABHA DAM DIVISION, CHANDAULI | CHANDAULI | MD | PRADHANMANTRI GRAM SADAK YOJNA, CHANDAULI | RURAL ENGINEERING DEPARTMENT DIVISION, CHANDAULI |
| 215 | TUBEWELL DIVISION, CHANDAULI | CHANDAULI | LD | PRADHANMANTRI GRAM SADAK YOJNA, CHANDAULI | RURAL ENGINEERING DEPARTMENT DIVISION, CHANDAULI |
| 216 | PROVINCIAL DIVISION, PWD, KARVI, CHITRAKOOT | CHITRAKOOT | VHD | CONSTRUCTION DIVISION-1, PWD, CHITRAKOOT | IRRIGATION CONSTRUCTION DIVISION, KARVI, CHITRAKOOT |
| 217 | CONSTRUCTION DIVISION-1, PWD, CHITRAKOOT | CHITRAKOOT | HD | IRRIGATION CONSTRUCTION DIVISION, KARVI, CHITRAKOOT | PROVINCIAL DIVISION, PWD, KARVI, CHITRAKOOT |
| 218 | IRRIGATION CONSTRUCTION DIVISION, KARVI, CHITRAKOOT | CHITRAKOOT | HD | CONSTRUCTION DIVISION-1, PWD, CHITRAKOOT | PROVINCIAL DIVISION, PWD, KARVI, CHITRAKOOT |
| 219 | RURAL ENGINEERING DEPARTMENT DIVISION, CHITRAKOOT | CHITRAKOOT | MD | MINOR IRRIGATION DIVISION, CHITRAKOOT | CONSTRUCTION DIVISION-1, PWD, CHITRAKOOT |
| 220 | MINOR IRRIGATION DIVISION, CHITRAKOOT | CHITRAKOOT | MD | RURAL ENGINEERING DEPARTMENT DIVISION, CHITRAKOOT | IRRIGATION CONSTRUCTION DIVISION, KARVI, CHITRAKOOT |

| | | | | | |
|-----|---|----------------------|-----|---|---|
| 221 | IRRIGATION DIVISION, KARVI, CHITRAKOOT | CHITRAKOOT | LD | PRADHANMANTRI GRAM SADAK YOJNA, CHITRAKOOT | RURAL ENGINEERING DEPARTMENT DIVISION, CHITRAKOOT |
| 222 | PRADHANMANTRI GRAM SADAK YOJNA, CHITRAKOOT | CHITRAKOOT | LD | IRRIGATION DIVISION, KARVI, CHITRAKOOT | MINOR IRRIGATION DIVISION, CHITRAKOOT |
| 223 | PROVINCIAL DIVISION, PWD, DEORIA | DEORIA | VHD | CONSTRUCTION DIVISION, PWD, DEORIA | FLOOD WORKS DIVISION, DEORIA |
| 224 | CONSTRUCTION DIVISION, PWD, DEORIA | DEORIA | VHD | PROVINCIAL DIVISION, PWD, DEORIA | RURAL ENGINEERING DEPARTMENT DIVISION, DEORIA |
| 225 | FLOOD WORKS DIVISION, DEORIA | DEORIA | HD | RURAL ENGINEERING DEPARTMENT DIVISION, DEORIA | PROVINCIAL DIVISION, PWD, DEORIA |
| 226 | RURAL ENGINEERING DEPARTMENT DIVISION, DEORIA | DEORIA | HD | FLOOD WORKS DIVISION, DEORIA | CONSTRUCTION DIVISION, PWD, DEORIA |
| 227 | MINOR IRRIGATION DIVISION, DEORIA | DEORIA | MD | FLOOD WORKS DIVISION, DEORIA | RURAL ENGINEERING DEPARTMENT DIVISION, DEORIA |
| 228 | IRRIGATION DIVISION-2, DEORIA | DEORIA | LD | TUBEWELL MAINTENANCE DIVISION, DEORIA | TUBEWELL DIVISION-2, DEORIA |
| 229 | TUBEWELL MAINTENANCE DIVISION, DEORIA | DEORIA | LD | TUBEWELL DIVISION-2, SALEMPUR, DEORIA | IRRIGATION DIVISION-2, DEORIA |
| 230 | TUBEWELL DIVISION-2, SALEMPUR, DEORIA | DEORIA | LD | IRRIGATION DIVISION-2, DEORIA | TUBEWELL MAINTENANCE DIVISION, DEORIA |
| 231 | PROVINCIAL DIVISION, PWD, ETAWAH | ETAWAH | HD | IRRIGATION DIVISION, ETAWAH | RURAL ENGINEERING DEPARTMENT DIVISION, ETAWAH |
| 232 | IRRIGATION DIVISION, ETAWAH | ETAWAH | HD | RURAL ENGINEERING DEPARTMENT DIVISION, ETAWAH | CONSTRUCTION DIVISION-1, PWD, ETAWAH |
| 233 | RURAL ENGINEERING DEPARTMENT DIVISION, ETAWAH | ETAWAH | HD | CONSTRUCTION DIVISION-1, PWD, ETAWAH | PROVINCIAL DIVISION, PWD, ETAWAH |
| 234 | CONSTRUCTION DIVISION-1, PWD, ETAWAH | ETAWAH | HD | PROVINCIAL DIVISION, PWD, ETAWAH | IRRIGATION DIVISION, ETAWAH |
| 235 | TUBEWELL DIVISION, ETAWAH | ETAWAH | LD | DRAINAGE DIVISION, ETAWAH | PROVINCIAL DIVISION, PWD, ETAWAH |
| 236 | DRAINAGE DIVISION, ETAWAH | ETAWAH | LD | TUBEWELL DIVISION, ETAWAH | IRRIGATION DIVISION, ETAWAH |
| 237 | MINOR IRRIGATION DIVISION, ETAWAH | ETAWAH | HD | CONSTRUCTION DIVISION-1, PWD, ETAWAH | RURAL ENGINEERING DEPARTMENT DIVISION, ETAWAH |
| 238 | CONSTRUCTION DIVISION-1, PWD, ETAWAH | ETAWAH | HD | MINOR IRRIGATION DIVISION, ETAWAH | CONSTRUCTION DIVISION, PWD, ETAWAH |
| 239 | RURAL ENGINEERING DEPARTMENT DIVISION, ETAWAH | ETAWAH | MD | CONSTRUCTION DIVISION-1, PWD, ETAWAH | L G C DIVISION, ETAWAH |
| 240 | CONSTRUCTION DIVISION, PWD, ETAWAH | ETAWAH | MD | L G C DIVISION, ETAWAH | CONSTRUCTION DIVISION-3, PWD, ETAWAH |
| 241 | L G C DIVISION, ETAWAH | ETAWAH | MD | CONSTRUCTION DIVISION-3, PWD, ETAWAH | PROVINCIAL DIVISION, PWD, ETAWAH |
| 242 | CONSTRUCTION DIVISION-3, PWD, ETAWAH | ETAWAH | MD | PROVINCIAL DIVISION, PWD, ETAWAH | B L G C DIVISION, ETAWAH |
| 243 | PROVINCIAL DIVISION, PWD, ETAWAH | ETAWAH | MD | B L G C DIVISION, ETAWAH | RURAL ENGINEERING DEPARTMENT DIVISION, ETAWAH |
| 244 | B L G C DIVISION, ETAWAH | ETAWAH | MD | RURAL ENGINEERING DEPARTMENT DIVISION, ETAWAH | CONSTRUCTION DIVISION, PWD, ETAWAH |
| 245 | NATIONAL HIGHWAY DIVISION, ETAWAH | ETAWAH | LD | TUBEWELL DIVISION-1, ETAWAH | IRRIGATION DIVISION, ETAWAH |
| 246 | TUBEWELL DIVISION-1, ETAWAH | ETAWAH | LD | IRRIGATION DIVISION, ETAWAH | MECHANICAL DIVISION I, PWD, ETAWAH |
| 247 | IRRIGATION DIVISION, ETAWAH | ETAWAH | LD | MECHANICAL DIVISION I, PWD, ETAWAH | NATIONAL HIGHWAY DIVISION, ETAWAH |
| 248 | MECHANICAL DIVISION I, PWD, ETAWAH | ETAWAH | LD | NATIONAL HIGHWAY DIVISION, ETAWAH | TUBEWELL DIVISION-1, ETAWAH |
| 249 | CONSTRUCTION DIVISION, PWD, FATEHGARH FARUKHABAD | FARUKHABAD | HD | PROVINCIAL DIVISION, PWD, FATEHGARH FARUKHABAD | RURAL ENGINEERING DEPARTMENT DIVISION, FARUKHABAD |
| 250 | PROVINCIAL DIVISION, PWD, FATEHGARH FARUKHABAD | FARUKHABAD | HD | RURAL ENGINEERING DEPARTMENT DIVISION, FARUKHABAD | CONSTRUCTION DIVISION, PWD, FATEHGARH FARUKHABAD |
| 251 | RURAL ENGINEERING DEPARTMENT DIVISION, FARUKHABAD | FARUKHABAD | HD | CONSTRUCTION DIVISION, PWD, FATEHGARH FARUKHABAD | PROVINCIAL DIVISION, PWD, FATEHGARH FARUKHABAD |
| 252 | IRRIGATION DIVISION, FATEHGARH FARUKHABAD | FARUKHABAD | LD | TUBEWELL DIVISION, FATEHGARH FARUKHABAD | CONSTRUCTION DIVISION, PWD, FATEHGARH FARUKHABAD |
| 253 | TUBEWELL DIVISION, FATEHGARH FARUKHABAD | FARUKHABAD | LD | IRRIGATION DIVISION, FATEHGARH FARUKHABAD | PROVINCIAL DIVISION, PWD, FATEHGARH FARUKHABAD |
| 254 | PROVINCIAL DIVISION, PWD, FATEHGARH FARUKHABAD | FATEHGARH FARUKHABAD | VHD | CONSTRUCTION DIVISION-2, PWD, FATEHGARH FARUKHABAD | RURAL ENGINEERING DEPARTMENT DIVISION, FATEHGARH FARUKHABAD |
| 255 | CONSTRUCTION DIVISION-2, PWD, FATEHGARH FARUKHABAD | FATEHGARH FARUKHABAD | HD | RURAL ENGINEERING DEPARTMENT DIVISION, FATEHGARH FARUKHABAD | PROVINCIAL DIVISION, PWD, FATEHGARH FARUKHABAD |
| 256 | RURAL ENGINEERING DEPARTMENT DIVISION, FATEHGARH FARUKHABAD | FATEHGARH FARUKHABAD | HD | CONSTRUCTION DIVISION-2, PWD, FATEHGARH FARUKHABAD | IRRIGATION DIVISION, FATEHGARH FARUKHABAD |
| 257 | L G C DIVISION, FATEHGARH FARUKHABAD | FATEHGARH FARUKHABAD | MD | PRADHANMANTRI GRAM SADAK YOJNA, FATEHGARH FARUKHABAD | IRRIGATION DIVISION, FATEHGARH FARUKHABAD |
| 258 | PRADHANMANTRI GRAM SADAK YOJNA, FATEHGARH FARUKHABAD | FATEHGARH FARUKHABAD | MD | IRRIGATION DIVISION, FATEHGARH FARUKHABAD | L G C DIVISION, FATEHGARH FARUKHABAD |
| 259 | IRRIGATION DIVISION, FATEHGARH FARUKHABAD | FATEHGARH FARUKHABAD | MD | L G C DIVISION, FATEHGARH FARUKHABAD | PRADHANMANTRI GRAM SADAK YOJNA, FATEHGARH FARUKHABAD |
| 260 | TUBEWELL DIVISION-1, FATEHGARH FARUKHABAD | FATEHGARH FARUKHABAD | LD | DRAINAGE DIVISION, FATEHGARH FARUKHABAD | MECHANICAL DIVISION, FATEHGARH FARUKHABAD |
| 261 | DRAINAGE DIVISION, FATEHGARH FARUKHABAD | FATEHGARH FARUKHABAD | LD | TUBEWELL DIVISION-1, FATEHGARH FARUKHABAD | DRAINAGE DIVISION, FATEHGARH FARUKHABAD |
| 262 | MECHANICAL DIVISION, FATEHGARH FARUKHABAD | FATEHGARH FARUKHABAD | LD | TUBEWELL DIVISION-1, FATEHGARH FARUKHABAD | CONSTRUCTION DIVISION-2, PWD, FIROZABAD |
| 263 | PROVINCIAL DIVISION, PWD, FIROZABAD | FIROZABAD | HD | CONSTRUCTION DIVISION, PWD, FIROZABAD | IRRIGATION CONSTRUCTION DIVISION, FIROZABAD |
| 264 | CONSTRUCTION DIVISION, PWD, FIROZABAD | FIROZABAD | HD | PROVINCIAL DIVISION, PWD, FIROZABAD | PRADHANMANTRI GRAM SADAK YOJNA, FIROZABAD |
| 265 | CONSTRUCTION DIVISION-2, PWD, FIROZABAD | FIROZABAD | MD | IRRIGATION CONSTRUCTION DIVISION, FIROZABAD | RURAL ENGINEERING DEPARTMENT DIVISION, FIROZABAD |
| 266 | IRRIGATION CONSTRUCTION DIVISION, FIROZABAD | FIROZABAD | MD | PRADHANMANTRI GRAM SADAK YOJNA, FIROZABAD | CONSTRUCTION DIVISION, FIROZABAD |
| 267 | PRADHANMANTRI GRAM SADAK YOJNA, FIROZABAD | FIROZABAD | MD | RURAL ENGINEERING DEPARTMENT DIVISION, FIROZABAD | CONSTRUCTION DIVISION-2, PWD, FIROZABAD |
| 268 | RURAL ENGINEERING DEPARTMENT DIVISION, FIROZABAD | FIROZABAD | MD | IRRIGATION DIVISION, FIROZABAD | IRRIGATION CONSTRUCTION DIVISION, FIROZABAD |
| 269 | IRRIGATION DIVISION, FIROZABAD | FIROZABAD | MD | CONSTRUCTION DIVISION-2, PWD, FIROZABAD | CONSTRUCTION DIVISION-2, PWD, FIROZABAD |
| 270 | MINOR IRRIGATION DIVISION, FIROZABAD | FIROZABAD | LD | TUBEWELL DIVISION, FIROZABAD | CONSTRUCTION DIVISION-2, PWD, FIROZABAD |
| 271 | TUBEWELL DIVISION, FIROZABAD | FIROZABAD | LD | MINOR IRRIGATION DIVISION, FIROZABAD | IRRIGATION CONSTRUCTION DIVISION, FIROZABAD |
| 272 | PROVINCIAL DIVISION, PWD, GAUTAM BUDDH NAGAR | GAUTAM BUDDH NAGAR | HD | RURAL ENGINEERING DEPARTMENT DIVISION, GAUTAM BUDDH NAGAR | IRRIGATION CONSTRUCTION DIVISION, FIROZABAD |
| 273 | RURAL ENGINEERING DEPARTMENT DIVISION, GAUTAM BUDDH NAGAR | GAUTAM BUDDH NAGAR | MD | PROVINCIAL DIVISION, PWD, GAUTAM BUDDH NAGAR | |
| 274 | CONSTRUCTION DIVISION-2, PWD, GHAZIABAD | GAZIABAD | HD | RURAL ENGINEERING DEPARTMENT DIVISION, GHAZIABAD | IRRIGATION CONSTRUCTION DIVISION, GHAZIABAD |
| 275 | RURAL ENGINEERING DEPARTMENT DIVISION, GHAZIABAD | GAZIABAD | MD | IRRIGATION CONSTRUCTION DIVISION, GHAZIABAD | PRADHANMANTRI GRAM SADAK YOJNA, GHAZIABAD |

| | | | | | |
|-----|--|-----------|-----|--|--|
| 276 | IRRIGATION CONSTRUCTION DIVISION, GHAZIABAD | GHAZIABAD | MD | PRADHANMANTRI GRAM SADAK YOJNA, GHAZIABAD | RURAL ENGINEERING DEPARTMENT DIVISION, GHAZIABAD |
| 277 | PRADHANMANTRI GRAM SADAK YOJNA, GHAZIABAD | GHAZIABAD | MD | RURAL ENGINEERING DEPARTMENT DIVISION, GHAZIABAD | IRRIGATION CONSTRUCTION DIVISION, GHAZIABAD |
| 278 | MINOR IRRIGATION DIVISION, GHAZIABAD | GHAZIABAD | LD | NATIONAL HIGHWAY DIVISION, GHAZIABAD | TUBEWELL DIVISION, GHAZIABAD |
| 279 | NATIONAL HIGHWAY DIVISION, GHAZIABAD | GHAZIABAD | LD | TUBEWELL DIVISION, GHAZIABAD | MINOR IRRIGATION DIVISION, GHAZIABAD |
| 280 | TUBEWELL DIVISION, GHAZIABAD | GHAZIABAD | LD | MINOR IRRIGATION DIVISION, GHAZIABAD | NATIONAL HIGHWAY DIVISION, GHAZIABAD |
| 281 | PROVINCIAL DIVISION, PWD, GHAZIPIUR | GHAZIPIUR | VHD | CONSTRUCTION DIVISION-1, PWD, GHAZIPIUR | CONSTRUCTION DIVISION-3, PWD, GHAZIPIUR |
| 282 | CONSTRUCTION DIVISION-1, PWD, GHAZIPIUR | GHAZIPIUR | VHD | PROVINCIAL DIVISION, PWD, GHAZIPIUR | DEOKALI PUMP CD-1, GHAZIPIUR |
| 283 | CONSTRUCTION DIVISION-3, PWD, GHAZIPIUR | GHAZIPIUR | HD | DEOKALI PUMP CD-1, GHAZIPIUR | PRADHANMANTRI GRAM SADAK YOJNA, GHAZIPIUR |
| 284 | DEOKALI PUMP CD-1, GHAZIPIUR | GHAZIPIUR | HD | PRADHANMANTRI GRAM SADAK YOJNA, GHAZIPIUR | CONSTRUCTION DIVISION-3, PWD, GHAZIPIUR |
| 285 | PRADHANMANTRI GRAM SADAK YOJNA, GHAZIPIUR | GHAZIPIUR | HD | CONSTRUCTION DIVISION-3, PWD, GHAZIPIUR | DEOKALI PUMP CD-1, GHAZIPIUR |
| 286 | DEOKALI PUMP CD-2, GHAZIPIUR | GHAZIPIUR | MD | RURAL ENGINEERING DEPARTMENT DIVISION, GHAZIPIUR | PRADHANMANTRI GRAM SADAK YOJNA, GHAZIPIUR |
| 287 | RURAL ENGINEERING DEPARTMENT DIVISION, GHAZIPIUR | GHAZIPIUR | MD | DEOKALI PUMP CD-2, GHAZIPIUR | CONSTRUCTION DIVISION-3, PWD, GHAZIPIUR |
| 288 | MINOR LIFT CANAL DIVISION, GHAZIPIUR | GHAZIPIUR | LD | TUBE WELL DIVISION-1, GHAZIPIUR | TUBE WELL DIVISION-2, GHAZIPIUR |
| 289 | TUBE WELL DIVISION-1, GHAZIPIUR | GHAZIPIUR | LD | TUBE WELL DIVISION-2, GHAZIPIUR | MINOR LIFT CANAL DIVISION, GHAZIPIUR |
| 290 | TUBE WELL DIVISION-2, GHAZIPIUR | GHAZIPIUR | LD | MINOR LIFT CANAL DIVISION, GHAZIPIUR | TUBE WELL DIVISION-1, GHAZIPIUR |
| 291 | CONSTRUCTION DIVISION-2, PWD, GONDA | GONDA | VHD | PROVINCIAL DIVISION, PWD, GONDA | CONSTRUCTION DIVISION-1, PWD, GONDA |
| 292 | PROVINCIAL DIVISION, PWD, GONDA | GONDA | VHD | CONSTRUCTION DIVISION-1, PWD, GONDA | RURAL ENGINEERING DEPARTMENT DIVISION, GONDA |
| 293 | CONSTRUCTION DIVISION-1, PWD, GONDA | GONDA | VHD | RURAL ENGINEERING DEPARTMENT DIVISION, GONDA | CONSTRUCTION DIVISION-2, PWD, GONDA |
| 294 | RURAL ENGINEERING DEPARTMENT DIVISION, GONDA | GONDA | VHD | CONSTRUCTION DIVISION-2, PWD, GONDA | PROVINCIAL DIVISION, PWD, GONDA |
| 295 | FLOOD WORKS DIVISION, GONDA | GONDA | HD | MINOR IRRIGATION DIVISION, GONDA | CONSTRUCTION DIVISION-2, PWD, GONDA |
| 296 | MINOR IRRIGATION DIVISION, GONDA | GONDA | HD | FLOOD WORKS DIVISION, GONDA | CONSTRUCTION DIVISION-2, PWD, GONDA |
| 297 | SARYU DRAINAGE DIVISION-3, GONDA | GONDA | MD | SARYU CANAL DIVISION-5, GONDA | PROVINCIAL DIVISION, PWD, GONDA |
| 298 | SARYU CANAL DIVISION-5, GONDA | GONDA | MD | SARYU CANAL DIVISION-4, GONDA | SARYU CANAL DIVISION-4, GONDA |
| 299 | SARYU CANAL DIVISION-4, GONDA | GONDA | MD | SARYU DRAINAGE DIVISION-3, GONDA | SARYU DRAINAGE DIVISION-3, GONDA |
| 300 | S N K-2, GONDA | GONDA | LD | S N K-3, GONDA | SARYU CANAL DIVISION-5, GONDA |
| 301 | S N K-3, GONDA | GONDA | LD | S N K-1, GONDA | S N K-1, GONDA |
| 302 | S N K-1, GONDA | GONDA | LD | TUBE WELL DIVISION, GONDA | TUBE WELL DIVISION, GONDA |
| 303 | TUBE WELL DIVISION, GONDA | GONDA | LD | SARYU DRAINAGE DIVISION-1, GONDA | SARYU DRAINAGE DIVISION-1, GONDA |
| 304 | SARYU DRAINAGE DIVISION-1, GONDA | GONDA | LD | ANUSADHAN & NIYOJAN DIVISION, GONDA | ANUSADHAN & NIYOJAN DIVISION, GONDA |
| 305 | ANUSADHAN & NIYOJAN DIVISION, GONDA | GONDA | LD | QUALITY CONTROL DIVISION, GONDA | QUALITY CONTROL DIVISION, GONDA |
| 306 | QUALITY CONTROL DIVISION, GONDA | GONDA | LD | S N K-2, GONDA | S N K-2, GONDA |
| 307 | GROUND WATER DEPARTMENT DIVISION, GONDA | GONDA | LD | S N K-3, GONDA | S N K-3, GONDA |
| 308 | CONSTRUCTION DIVISION-3, PWD, GORAKHPUR | GORAKHPUR | VHD | CONSTRUCTION DIVISION-1, PWD, GORAKHPUR | PROVINCIAL DIVISION, PWD, GORAKHPUR |
| 309 | CONSTRUCTION DIVISION-1, PWD, GORAKHPUR | GORAKHPUR | VHD | PROVINCIAL DIVISION, PWD, GORAKHPUR | TY, D C U (NATIONAL HIGHWAY)-1, GORAKHPUR |
| 310 | PROVINCIAL DIVISION, PWD, GORAKHPUR | GORAKHPUR | VHD | TY, D C U (NATIONAL HIGHWAY)-1, GORAKHPUR | RURAL ENGINEERING DEPARTMENT DIVISION, GORAKHPUR |
| 311 | TY, D C U (NATIONAL HIGHWAY)-1, GORAKHPUR | GORAKHPUR | VHD | RURAL ENGINEERING DEPARTMENT DIVISION, GORAKHPUR | CONSTRUCTION DIVISION-3, PWD, GORAKHPUR |
| 312 | RURAL ENGINEERING DEPARTMENT DIVISION, GORAKHPUR | GORAKHPUR | VHD | CONSTRUCTION DIVISION-3, PWD, GORAKHPUR | CONSTRUCTION DIVISION-1, PWD, GORAKHPUR |
| 313 | FLOOD DIVISION, GORAKHPUR | GORAKHPUR | HD | FLOOD DIVISION-2, GORAKHPUR | DRAINAGE DIVISION, GORAKHPUR |
| 314 | FLOOD DIVISION-2, GORAKHPUR | GORAKHPUR | HD | DRAINAGE DIVISION, GORAKHPUR | FLOOD DIVISION, GORAKHPUR |
| 315 | DRAINAGE DIVISION, GORAKHPUR | GORAKHPUR | HD | FLOOD DIVISION, GORAKHPUR | FLOOD DIVISION-2, GORAKHPUR |
| 316 | IRRIGATION WORKSHOP DIVISION, GORAKHPUR | GORAKHPUR | MD | IRRIGATION DIVISION-1, GORAKHPUR | MINOR IRRIGATION DIVISION, GORAKHPUR |
| 317 | IRRIGATION DIVISION-1, GORAKHPUR | GORAKHPUR | MD | MINOR IRRIGATION DIVISION, GORAKHPUR | TUBE WELL DIVISION-1, GORAKHPUR |
| 318 | MINOR IRRIGATION DIVISION, GORAKHPUR | GORAKHPUR | MD | TUBE WELL DIVISION-1, GORAKHPUR | E & M DIVISION, PWD, GORAKHPUR |
| 319 | TUBE WELL DIVISION-1, GORAKHPUR | GORAKHPUR | MD | E & M DIVISION, PWD, GORAKHPUR | IRRIGATION WORKSHOP DIVISION, GORAKHPUR |
| 320 | E & M DIVISION, PWD, GORAKHPUR | GORAKHPUR | MD | IRRIGATION WORKSHOP DIVISION, GORAKHPUR | IRRIGATION DIVISION-1, GORAKHPUR |
| 321 | TUBE WELL CONSTRUCTION DIVISION, GORAKHPUR | GORAKHPUR | LD | CONSTRUCTION DIVISION-2, PWD, GORAKHPUR | S N K-1, GORAKHPUR |
| 322 | CONSTRUCTION DIVISION-2, PWD, GORAKHPUR | GORAKHPUR | LD | S N K-1, GORAKHPUR | TUBE WELL DIVISION-2, GORAKHPUR |
| 323 | S N K-1, GORAKHPUR | GORAKHPUR | LD | TUBE WELL DIVISION-2, GORAKHPUR | LIFT IRRIGATION DIVISION, GORAKHPUR |
| 324 | TUBE WELL DIVISION-2, GORAKHPUR | GORAKHPUR | LD | LIFT IRRIGATION DIVISION, GORAKHPUR | I & P, GORAKHPUR |
| 325 | LIFT IRRIGATION DIVISION, GORAKHPUR | GORAKHPUR | LD | I & P, GORAKHPUR | TUBE WELL CONSTRUCTION DIVISION, GORAKHPUR |
| 326 | I & P, GORAKHPUR | GORAKHPUR | LD | TUBE WELL CONSTRUCTION DIVISION, GORAKHPUR | CONSTRUCTION DIVISION-2, PWD, GORAKHPUR |
| 327 | CONSTRUCTION DIVISION-2, PWD, HAMIRPUR | HAMIRPUR | LD | PROVINCIAL DIVISION, PWD, HAMIRPUR | MAUDHA DAM CONSTRUCTION DIVISION, HAMIRPUR |
| 328 | PROVINCIAL DIVISION, PWD, HAMIRPUR | HAMIRPUR | VHD | MAUDHA DAM CONSTRUCTION DIVISION, HAMIRPUR | CONSTRUCTION DIVISION-2, PWD, HAMIRPUR |
| 329 | MAUDHA DAM CONSTRUCTION DIVISION, HAMIRPUR | HAMIRPUR | HD | PROVINCIAL DIVISION, PWD, HAMIRPUR | CONSTRUCTION DIVISION-2, PWD, HAMIRPUR |
| 330 | RURAL ENGINEERING DEPARTMENT DIVISION, HAMIRPUR | HAMIRPUR | MD | MINOR IRRIGATION DIVISION, HAMIRPUR | PRADHANMANTRI GRAM SADAK YOJNA, HAMIRPUR |
| 331 | MINOR IRRIGATION DIVISION, HAMIRPUR | HAMIRPUR | MD | PRADHANMANTRI GRAM SADAK YOJNA, HAMIRPUR | RURAL ENGINEERING DEPARTMENT DIVISION, HAMIRPUR |
| 332 | PRADHANMANTRI GRAM SADAK YOJNA, HAMIRPUR | HAMIRPUR | MD | RURAL ENGINEERING DEPARTMENT DIVISION, HAMIRPUR | MINOR IRRIGATION DIVISION, HAMIRPUR |

| | | | | | |
|-----|--|----------|-----|--|--|
| 333 | TUBE WELL DIVISION, HAMIRPUR | HAMIRPUR | LD | MINOR LIFT CANAL DIVISION, HAMIRPUR | RURAL ENGINEERING DEPARTMENT DIVISION, HAMIRPUR |
| 334 | MINOR LIFT CANAL DIVISION, HAMIRPUR | HAMIRPUR | LD | TUBE WELL DIVISION, HAMIRPUR | MINOR IRRIGATION DIVISION, HAMIRPUR |
| 335 | MGCC DIV-14, GARMUKTESHWAR, HAPUR | HAPUR | HD | PROVINCIAL DIVISION, PWD, HAPUR | MGCC DIV-13, GARMUKTESHWAR, HAPUR |
| 336 | PROVINCIAL DIVISION, PWD, HAPUR | HAPUR | HD | MGCC DIV-13, GARMUKTESHWAR, HAPUR | MGCC DIV-14, GARMUKTESHWAR, HAPUR |
| 337 | MGCC DIV-13, GARMUKTESHWAR, HAPUR | HAPUR | HD | MGCC DIV-14, GARMUKTESHWAR, HAPUR | PROVINCIAL DIVISION, PWD, HAPUR |
| 338 | PRADHANMANTRI GRAM SADAK YOJNA, HAPUR | HAPUR | MD | MGCC DIV-14, GARMUKTESHWAR, HAPUR | PROVINCIAL DIVISION, PWD, HAPUR |
| 339 | RURAL ENGINEERING DEPARTMENT DIVISION, HAPUR | HAPUR | LD | MINOR IRRIGATION DIVISION, HAPUR | MGCC DIV-14, GARMUKTESHWAR, HAPUR |
| 340 | MINOR IRRIGATION DIVISION, HAPUR | HAPUR | LD | RURAL ENGINEERING DEPARTMENT DIVISION, HAPUR | PROVINCIAL DIVISION, PWD, HAPUR |
| 341 | CONSTRUCTION DIVISION-1, PWD, HARDOI | HARDOI | VHD | CONSTRUCTION DIVISION-2, PWD, HARDOI | PROVINCIAL DIVISION, PWD, HARDOI |
| 342 | CONSTRUCTION DIVISION-2, PWD, HARDOI | HARDOI | VHD | CONSTRUCTION DIVISION-1, PWD, HARDOI | PRADHANMANTRI GRAM SADAK YOJNA, HARDOI |
| 343 | PROVINCIAL DIVISION, PWD, HARDOI | HARDOI | HD | PRADHANMANTRI GRAM SADAK YOJNA, HARDOI | PRADHANMANTRI GRAM SADAK YOJNA, HARDOI |
| 344 | PRADHANMANTRI GRAM SADAK YOJNA, HARDOI | HARDOI | HD | HARDOI SHARDA CANAL DIVISION, HARDOI | HARDOI SHARDA CANAL DIVISION, HARDOI |
| 345 | HARDOI SHARDA CANAL DIVISION, HARDOI | HARDOI | HD | PROVINCIAL DIVISION, PWD, HARDOI | PRADHANMANTRI GRAM SADAK YOJNA, HARDOI |
| 346 | RURAL ENGINEERING DEPARTMENT DIVISION, HARDOI | HARDOI | MD | PROVINCIAL DIVISION, PWD, HARDOI | PRADHANMANTRI GRAM SADAK YOJNA, HARDOI |
| 347 | N.W.M.P SHARDA CANAL DIVISION, HARDOI | HARDOI | LD | TUBE WELL DIVISION, HARDOI | RURAL ENGINEERING DEPARTMENT DIVISION, HARDOI |
| 348 | TUBE WELL DIVISION, HARDOI | HARDOI | LD | N.W.M.P SHARDA CANAL DIVISION, HARDOI | RURAL ENGINEERING DEPARTMENT DIVISION, HARDOI |
| 349 | MGC QUALITY CONTROL DIVISION-2, HARIDWAR | HARIDWAR | HD | EGC DIVISION-2, MAYAPUR, HARIDWAR | NORTH DIVISION GANGA CANAL, ROORKEE, HARIDWAR |
| 350 | EGC DIVISION-2, MAYAPUR, HARIDWAR | HARIDWAR | MD | NORTH DIVISION GANGA CANAL, ROORKEE, HARIDWAR | MGC QUALITY CONTROL DIVISION-2, HARIDWAR |
| 351 | NORTH DIVISION GANGA CANAL, ROORKEE, HARIDWAR | HARIDWAR | MD | EGC DIVISION-2, MAYAPUR, HARIDWAR | EGC DIVISION-2, MAYAPUR, HARIDWAR |
| 352 | Samanantar Deyband Branch Division, Roorkhee, Haridwar | HARIDWAR | LD | R&P (QUALITY CONTROL) (W.B), ROORKEE, HARIDWAR | NORTH DIVISION GANGA CANAL, ROORKEE, HARIDWAR |
| 353 | R&P (QUALITY CONTROL) (W.B), ROORKEE, HARIDWAR | HARIDWAR | LD | Samanantar Deyband Branch Division, Roorkhee, Haridwar | EGC DIVISION-2, MAYAPUR, HARIDWAR |
| 354 | PROVINCIAL DIVISION, PWD, HATHRAS | HATHRAS | HD | IRRIGATION DIVISION, HATHRAS | PROVINCIAL DIVISION, PWD, HATHRAS |
| 355 | IRRIGATION DIVISION, HATHRAS | HATHRAS | MD | PRADHANMANTRI GRAM SADAK YOJNA, HATHRAS | PROVINCIAL DIVISION, PWD, HATHRAS |
| 356 | PRADHANMANTRI GRAM SADAK YOJNA, HATHRAS | HATHRAS | MD | IRRIGATION DIVISION, HATHRAS | PRADHANMANTRI GRAM SADAK YOJNA, HATHRAS |
| 357 | RURAL ENGINEERING DEPARTMENT DIVISION, HATHRAS | HATHRAS | LD | IRRIGATION DIVISION, HATHRAS | PROVINCIAL DIVISION, PWD, HATHRAS |
| 358 | CONSTRUCTION DIVISION-1, PWD, ORAI, JALAU | JALAU | HD | PROVINCIAL DIVISION, PWD, ORAI, JALAU | CONSTRUCTION DIVISION-3, PWD, ORAI, JALAU |
| 359 | PROVINCIAL DIVISION, PWD, ORAI, JALAU | JALAU | HD | CONSTRUCTION DIVISION-3, PWD, ORAI, JALAU | CONSTRUCTION DIVISION-1, PWD, ORAI, JALAU |
| 360 | CONSTRUCTION DIVISION-3, PWD, ORAI, JALAU | JALAU | HD | CONSTRUCTION DIVISION-1, PWD, ORAI, JALAU | PROVINCIAL DIVISION, PWD, ORAI, JALAU |
| 361 | RURAL ENGINEERING DEPARTMENT DIVISION, ORAI, JALAU | JALAU | MD | BETWA CANAL DIVISION-1, ORAI, JALAU | BETWA CANAL DIVISION-2, ORAI, JALAU |
| 362 | BETWA CANAL DIVISION-1, ORAI, JALAU | JALAU | MD | BETWA CANAL DIVISION-2, ORAI, JALAU | RURAL ENGINEERING DEPARTMENT DIVISION, ORAI, JALAU |
| 363 | BETWA CANAL DIVISION-2, ORAI, JALAU | JALAU | MD | RURAL ENGINEERING DEPARTMENT DIVISION, ORAI, JALAU | BETWA CANAL DIVISION-1, ORAI, JALAU |
| 364 | PRADHANMANTRI GRAM SADAK YOJNA, JALAU | JALAU | LD | MINOR IRRIGATION DIVISION, JALAU | TUBE WELL CONSTRUCTION DIVISION, ORAI, JALAU |
| 365 | MINOR IRRIGATION DIVISION, JALAU | JALAU | LD | TUBE WELL CONSTRUCTION DIVISION, ORAI, JALAU | TUBE WELL DIVISION-2, ORAI, JALAU |
| 366 | TUBE WELL CONSTRUCTION DIVISION, ORAI, JALAU | JALAU | LD | TUBE WELL DIVISION-2, ORAI, JALAU | TUBE WELL DIVISION, ORAI, JALAU |
| 367 | TUBE WELL DIVISION-2, ORAI, JALAU | JALAU | LD | TUBE WELL DIVISION, ORAI, JALAU | PRADHANMANTRI GRAM SADAK YOJNA, JALAU |
| 368 | TUBE WELL DIVISION, ORAI, JALAU | JALAU | LD | PRADHANMANTRI GRAM SADAK YOJNA, JALAU | CONSTRUCTION DIVISION, PWD, JALAU |
| 369 | PROVINCIAL DIVISION, PWD, JALAU | JALAU | VHD | CONSTRUCTION DIVISION, PWD, JALAU | CONSTRUCTION DIVISION-2, PWD, JALAU |
| 370 | CONSTRUCTION DIVISION, PWD, JALAU | JALAU | VHD | PROVINCIAL DIVISION, PWD, JALAU | RURAL ENGINEERING DEPARTMENT DIVISION, JALAU |
| 371 | CONSTRUCTION DIVISION-2, PWD, JALAU | JALAU | HD | RURAL ENGINEERING DEPARTMENT DIVISION, JALAU | PROVINCIAL DIVISION, PWD, JALAU |
| 372 | RURAL ENGINEERING DEPARTMENT DIVISION, JALAU | JALAU | HD | CONSTRUCTION DIVISION-2, PWD, JALAU | CONSTRUCTION DIVISION, PWD, JALAU |
| 373 | S.S.K-36, JALUNPUR | JALUNPUR | MD | CONSTRUCTION DIVISION-2, PWD, JALUNPUR | RURAL ENGINEERING DEPARTMENT DIVISION, JALUNPUR |
| 374 | MINOR IRRIGATION DIVISION, JALUNPUR | JALUNPUR | LD | MINOR LIFT CANAL DIVISION, JALUNPUR | IRRIGATION DIVISION, JALUNPUR |
| 375 | MINOR LIFT CANAL DIVISION, JALUNPUR | JALUNPUR | LD | IRRIGATION DIVISION, JALUNPUR | TUBE WELL DIVISION-1, JALUNPUR |
| 376 | IRRIGATION DIVISION, JALUNPUR | JALUNPUR | LD | TUBE WELL DIVISION-1, JALUNPUR | MINOR IRRIGATION DIVISION, JALUNPUR |
| 377 | TUBE WELL DIVISION-1, JALUNPUR | JALUNPUR | LD | MINOR IRRIGATION DIVISION, JALUNPUR | MINOR LIFT CANAL DIVISION, JALUNPUR |
| 378 | CONSTRUCTION DIVISION-3, PWD, JHANSI | JHANSI | VHD | NATIONAL HIGHWAY DIVISION, JHANSI | PROVINCIAL DIVISION, PWD, JHANSI |
| 379 | NATIONAL HIGHWAY DIVISION, JHANSI | JHANSI | HD | PROVINCIAL DIVISION, PWD, JHANSI | IRRIGATION WORKSHOP DIVISION, JHANSI |
| 380 | PROVINCIAL DIVISION, PWD, JHANSI | JHANSI | HD | IRRIGATION WORKSHOP DIVISION, JHANSI | CONSTRUCTION DIVISION (BUILDING), PWD, JHANSI |
| 381 | IRRIGATION WORKSHOP DIVISION, JHANSI | JHANSI | HD | CONSTRUCTION DIVISION (BUILDING), PWD, JHANSI | IRRIGATION CONSTRUCTION DIVISION-5, JHANSI |
| 382 | CONSTRUCTION DIVISION (BUILDING), PWD, JHANSI | JHANSI | HD | IRRIGATION CONSTRUCTION DIVISION-5, JHANSI | NATIONAL HIGHWAY DIVISION, JHANSI |
| 383 | IRRIGATION CONSTRUCTION DIVISION-5, JHANSI | JHANSI | HD | NATIONAL HIGHWAY DIVISION, JHANSI | PROVINCIAL DIVISION, PWD, JHANSI |
| 384 | RURAL ENGINEERING DEPARTMENT DIVISION, JHANSI | JHANSI | MD | JHANSI DIVISION BETWA CANAL, JHANSI | SAPPAR DIVISION, JHANSI |
| 385 | JHANSI DIVISION BETWA CANAL, JHANSI | JHANSI | MD | SAPPAR DIVISION, JHANSI | PRADHANMANTRI GRAM SADAK YOJNA, JHANSI |
| 386 | SAPPAR DIVISION, JHANSI | JHANSI | MD | PRADHANMANTRI GRAM SADAK YOJNA, JHANSI | MINOR IRRIGATION DIVISION, JHANSI |
| 387 | PRADHANMANTRI GRAM SADAK YOJNA, JHANSI | JHANSI | MD | MINOR IRRIGATION DIVISION, JHANSI | LIFT CANAL DIVISION, JHANSI |
| 388 | MINOR IRRIGATION DIVISION, JHANSI | JHANSI | MD | LIFT CANAL DIVISION, JHANSI | RURAL ENGINEERING DEPARTMENT DIVISION, JHANSI |
| 389 | LIFT CANAL DIVISION, JHANSI | JHANSI | MD | RURAL ENGINEERING DEPARTMENT DIVISION, JHANSI | JHANSI DIVISION BETWA CANAL, JHANSI |

| | | | | | |
|-----|---|--------------|-----|---|---|
| 390 | ELECTRICAL & MECHANICAL DIVISION, JHANSI | JHANSI | LD | MATATILA DAM DIVISION, JHANSI | IRRIGATION CONSTRUCTION DIVISION-1, JHANSI |
| 391 | MATATILA DAM DIVISION, JHANSI | JHANSI | LD | IRRIGATION CONSTRUCTION DIVISION-1, JHANSI | I & P DIVISION, JHANSI |
| 392 | GROUNDWATER DEPARTMENT DIVISION, JHANSI | JHANSI | LD | IRRIGATION CONSTRUCTION DIVISION-1, JHANSI | I & P DIVISION, JHANSI |
| 393 | IRRIGATION CONSTRUCTION DIVISION-1, JHANSI | JHANSI | LD | I & P DIVISION, JHANSI | QUALITY CONTROL DIVISION, JHANSI |
| 394 | I & P DIVISION, JHANSI | JHANSI | LD | QUALITY CONTROL DIVISION, JHANSI | ELECTRICAL & MECHANICAL DIVISION, JHANSI |
| 395 | QUALITY CONTROL DIVISION, JHANSI | JHANSI | LD | ELECTRICAL & MECHANICAL DIVISION, JHANSI | MATATILA DAM DIVISION, JHANSI |
| 396 | CONSTRUCTION DIVISION, PWD, KANNAUJ | KANNAUJ | HD | PROVINCIAL DIVISION, PWD, KANNAUJ | CONSTRUCTION DIVISION-1, PWD, KANNAUJ |
| 397 | PROVINCIAL DIVISION, PWD, KANNAUJ | KANNAUJ | HD | CONSTRUCTION DIVISION-1, PWD, KANNAUJ | CONSTRUCTION DIVISION, PWD, KANNAUJ |
| 398 | CONSTRUCTION DIVISION-1, PWD, KANNAUJ | KANNAUJ | HD | CONSTRUCTION DIVISION, PWD, KANNAUJ | PROVINCIAL DIVISION, PWD, KANNAUJ |
| 399 | IRRIGATION DIVISION, KANNAUJ | KANNAUJ | MD | CONSTRUCTION DIVISION, PWD, KANNAUJ | PROVINCIAL DIVISION, PWD, KANNAUJ |
| 400 | RURAL ENGINEERING DEPARTMENT DIVISION, KANNAUJ | KANNAUJ | LD | TUBE WELL DIVISION, KANNAUJ | IRRIGATION DIVISION, KANNAUJ |
| 401 | TUBE WELL DIVISION, KANNAUJ | KANNAUJ | LD | RURAL ENGINEERING DEPARTMENT DIVISION, KANNAUJ | IRRIGATION DIVISION, KANNAUJ |
| 402 | IRRIGATION DIVISION, KANPUR DEHAT | KANPUR DEHAT | VHD | CONSTRUCTION DIVISION-1, PWD, KANPUR DEHAT | PROVINCIAL DIVISION, PWD, KANPUR DEHAT |
| 403 | CONSTRUCTION DIVISION-1, PWD, KANPUR DEHAT | KANPUR DEHAT | VHD | IRRIGATION DIVISION, KANPUR DEHAT | PROVINCIAL DIVISION, PWD, KANPUR DEHAT |
| 404 | PROVINCIAL DIVISION, PWD, KANPUR DEHAT | KANPUR DEHAT | HD | IRRIGATION DIVISION, KANPUR DEHAT | CONSTRUCTION DIVISION-1, PWD, KANPUR DEHAT |
| 405 | RURAL ENGINEERING DEPARTMENT DIVISION, KANPUR DEHAT | KANPUR DEHAT | MD | PROVINCIAL DIVISION, PWD, KANPUR DEHAT | IRRIGATION DIVISION, KANPUR DEHAT |
| 406 | TUBEWELL DIVISION, AKBARPUR, KANPUR DEHAT | KANPUR DEHAT | LD | RURAL ENGINEERING DEPARTMENT DIVISION, KANPUR DEHAT | PROVINCIAL DIVISION, PWD, KANPUR DEHAT |
| 407 | PARIYOJANA BHANDAR KHAND, KANPUR | KANPUR NAGAR | VHD | WORLD BANK DIVISION, PWD, KANPUR | CONSTRUCTION DIVISION-2, PWD, KANPUR |
| 408 | WORLD BANK DIVISION, PWD, KANPUR | KANPUR NAGAR | VHD | CONSTRUCTION DIVISION-2, PWD, KANPUR | PROVINCIAL DIVISION, PWD, KANPUR |
| 409 | CONSTRUCTION DIVISION-2, PWD, KANPUR | KANPUR NAGAR | VHD | PROVINCIAL DIVISION, PWD, KANPUR | PARIYOJANA BHANDAR KHAND, KANPUR |
| 410 | PROVINCIAL DIVISION, PWD, KANPUR | KANPUR NAGAR | VHD | PARIYOJANA BHANDAR KHAND, KANPUR | WORLD BANK DIVISION, PWD, KANPUR |
| 411 | CONSTRUCTION DIVISION (BUILDING), PWD, KANPUR | KANPUR NAGAR | HD | BARRAGE MECHANICAL MAINTENANCE DIVISION, KANPUR | PARIYOJANA BHANDAR KHAND, KANPUR |
| 412 | BARRAGE MECHANICAL MAINTENANCE DIVISION, KANPUR | KANPUR NAGAR | HD | CONSTRUCTION DIVISION (BUILDING), PWD, KANPUR | WORLD BANK DIVISION, PWD, KANPUR |
| 413 | RURAL ENGINEERING DEPARTMENT DIVISION, KANPUR | KANPUR NAGAR | MD | MINOR IRRIGATION DIVISION, KANPUR | L G C DIVISION, KANPUR |
| 414 | MINOR IRRIGATION DIVISION, KANPUR | KANPUR NAGAR | MD | L G C DIVISION, KANPUR | WORKSHOP ERECTION DIVISION, KANPUR |
| 415 | L G C DIVISION, KANPUR | KANPUR NAGAR | MD | WORKSHOP ERECTION DIVISION, KANPUR | IRRIGATION WORKSHOP DIVISION, KANPUR |
| 416 | WORKSHOP ERECTION DIVISION, KANPUR | KANPUR NAGAR | MD | IRRIGATION WORKSHOP DIVISION, KANPUR | MINOR LIFT CANAL DIVISION, KANPUR |
| 417 | IRRIGATION WORKSHOP DIVISION, KANPUR | KANPUR NAGAR | MD | MINOR LIFT CANAL DIVISION, KANPUR | PRADHANMANTRI GRAM SADAK YOJNA, KANPUR |
| 418 | MINOR LIFT CANAL DIVISION, KANPUR | KANPUR NAGAR | MD | PRADHANMANTRI GRAM SADAK YOJNA, KANPUR | TUBE WELL CONSTRUCTION DIVISION, KANPUR |
| 419 | PRADHANMANTRI GRAM SADAK YOJNA, KANPUR | KANPUR NAGAR | MD | TUBE WELL CONSTRUCTION DIVISION, KANPUR | BARRAGE CONSTRUCTION DIVISION-2, KANPUR |
| 420 | TUBE WELL CONSTRUCTION DIVISION, KANPUR | KANPUR NAGAR | MD | BARRAGE CONSTRUCTION DIVISION-2, KANPUR | RURAL ENGINEERING DEPARTMENT DIVISION, KANPUR |
| 421 | BARRAGE CONSTRUCTION DIVISION-2, KANPUR | KANPUR NAGAR | MD | RURAL ENGINEERING DEPARTMENT DIVISION, KANPUR | MINOR IRRIGATION DIVISION, KANPUR |
| 422 | BARRAGE CONSTRUCTION DIVISION-1, KANPUR | KANPUR NAGAR | LD | TY, ELECTRICAL & MECHANICAL DIVISION, KANPUR | NATIONAL HIGHWAY DIVISION, KANPUR |
| 423 | TY, ELECTRICAL & MECHANICAL DIVISION, KANPUR | KANPUR NAGAR | LD | NATIONAL HIGHWAY DIVISION, KANPUR | TUBE WELL DIVISION-1, KANPUR |
| 424 | NATIONAL HIGHWAY DIVISION, KANPUR | KANPUR NAGAR | LD | TUBE WELL DIVISION-1, KANPUR | I & P (WR) DIVISION, KANPUR |
| 425 | TUBE WELL DIVISION-1, KANPUR | KANPUR NAGAR | LD | I & P (WR) DIVISION, KANPUR | QUALITY CONTROL DIVISION, KANPUR |
| 426 | I & P (WR) DIVISION, KANPUR | KANPUR NAGAR | LD | QUALITY CONTROL DIVISION, KANPUR | BARRAGE CONSTRUCTION DIVISION-1, KANPUR |
| 427 | QUALITY CONTROL DIVISION, KANPUR | KANPUR NAGAR | LD | BARRAGE CONSTRUCTION DIVISION-1, KANPUR | TY, ELECTRICAL & MECHANICAL DIVISION, KANPUR |
| 428 | GROUNDWATER DEPARTMENT DIVISION, KANPUR | KANPUR NAGAR | LD | TY, ELECTRICAL & MECHANICAL DIVISION, KANPUR | NATIONAL HIGHWAY DIVISION, KANPUR |
| 429 | GROUNDWATER DEPARTMENT DIVISION, KANPUR | KANPUR NAGAR | LD | IRRIGATION DIVISION, KASGANJ | CONSTRUCTION DIVISION, PWD, KASGANJ |
| 430 | IRRIGATION DIVISION, KASGANJ | KASGANJ | HD | CONSTRUCTION DIVISION, PWD, KASGANJ | PROVINCIAL DIVISION, PWD, KASGANJ |
| 431 | CONSTRUCTION DIVISION, PWD, KASGANJ | KASGANJ | HD | PROVINCIAL DIVISION, PWD, KASGANJ | IRRIGATION DIVISION, KASGANJ |
| 432 | RURAL ENGINEERING DEPARTMENT DIVISION, KASGANJ | KASGANJ | MD | PROVINCIAL DIVISION, PWD, KASGANJ | IRRIGATION DIVISION, KASGANJ |
| 433 | TUBEWELL DIVISION, KASGANJ | KASGANJ | LD | RURAL ENGINEERING DEPARTMENT DIVISION, KASGANJ | CONSTRUCTION DIVISION, PWD, KASGANJ |
| 434 | PROVINCIAL DIVISION, PWD, KAUSHAMBI | KAUSHAMBI | VHD | CONSTRUCTION DIVISION, PWD, KAUSHAMBI | PRADHANMANTRI GRAM SADAK YOJNA, KAUSHAMBI |
| 435 | CONSTRUCTION DIVISION, PWD, KAUSHAMBI | KAUSHAMBI | VHD | PROVINCIAL DIVISION, PWD, KAUSHAMBI | RURAL ENGINEERING DEPARTMENT DIVISION, KAUSHAMBI |
| 436 | PRADHANMANTRI GRAM SADAK YOJNA, KAUSHAMBI | KAUSHAMBI | MD | RURAL ENGINEERING DEPARTMENT DIVISION, KAUSHAMBI | CONSTRUCTION DIVISION, PWD, KAUSHAMBI |
| 437 | RURAL ENGINEERING DEPARTMENT DIVISION, KAUSHAMBI | KAUSHAMBI | MD | PRADHANMANTRI GRAM SADAK YOJNA, KAUSHAMBI | RURAL ENGINEERING DEPARTMENT DIVISION, KAUSHAMBI |
| 438 | IRRIGATION DIVISION, KAUSHAMBI | KAUSHAMBI | LD | CONSTRUCTION DIVISION, PWD, KUSHINAGAR | FLOOD DIVISION, KUSHINAGAR |
| 439 | PROVINCIAL DIVISION, PWD, KUSHINAGAR | KUSHI NAGAR | VHD | FLOOD DIVISION, KUSHINAGAR | RURAL ENGINEERING DEPARTMENT DIVISION, PADRAUNA, KUSHINAGAR |
| 440 | CONSTRUCTION DIVISION, PWD, KUSHINAGAR | KUSHI NAGAR | VHD | RURAL ENGINEERING DEPARTMENT DIVISION, PADRAUNA, KUSHINAGAR | PROVINCIAL DIVISION, PWD, KUSHINAGAR |
| 441 | FLOOD DIVISION, KUSHINAGAR | KUSHI NAGAR | VHD | PROVINCIAL DIVISION, PWD, KUSHINAGAR | CONSTRUCTION DIVISION, PWD, KUSHINAGAR |
| 442 | RURAL ENGINEERING DEPARTMENT DIVISION, PADRAUNA, KUSHINAGAR | KUSHI NAGAR | VHD | CONSTRUCTION DIVISION, PWD, KUSHINAGAR | CONSTRUCTION DIVISION, PWD, KUSHINAGAR |
| 443 | IRRIGATION DIVISION, KUSHINAGAR | KUSHI NAGAR | MD | PROVINCIAL DIVISION, PWD, KUSHINAGAR | CONSTRUCTION DIVISION, PWD, KUSHINAGAR |

| | | | | | |
|-----|--|-----------------|-----|--|--|
| 444 | IRRIGATION DIVISION-2, KUSHINAGAR | KUSHI NAGAR | LD | IRRIGATION DIVISION, KUSHINAGAR | FLOOD DIVISION, KUSHINAGAR |
| 445 | NATIONAL HIGHWAY DIVISION, LAKHIMPUR KHERI | LAKHIMPUR KHERI | VHD | CONSTRUCTION DIVISION-3, PWD, LAKHIMPUR KHERI | CONSTRUCTION DIVISION-1, PWD, LAKHIMPUR KHERI |
| 446 | CONSTRUCTION DIVISION-3, PWD, LAKHIMPUR KHERI | LAKHIMPUR KHERI | VHD | CONSTRUCTION DIVISION-1, PWD, LAKHIMPUR KHERI | NATIONAL HIGHWAY DIVISION, LAKHIMPUR KHERI |
| 447 | CONSTRUCTION DIVISION-1, PWD, LAKHIMPUR KHERI | LAKHIMPUR KHERI | VHD | NATIONAL HIGHWAY DIVISION, LAKHIMPUR KHERI | CONSTRUCTION DIVISION-3, PWD, LAKHIMPUR KHERI |
| 448 | PROVINCIAL DIVISION, PWD, LAKHIMPUR KHERI | LAKHIMPUR KHERI | HD | FLOOD DIVISION, SHARDAAGAR, LAKHIMPUR KHERI | NATIONAL HIGHWAY DIVISION, LAKHIMPUR KHERI |
| 449 | FLOOD DIVISION, SHARDAAGAR, LAKHIMPUR KHERI | LAKHIMPUR KHERI | HD | PROVINCIAL DIVISION, PWD, LAKHIMPUR KHERI | CONSTRUCTION DIVISION-3, PWD, LAKHIMPUR KHERI |
| 450 | RURAL ENGINEERING DEPARTMENT DIVISION, LAKHIMPUR KHERI | LAKHIMPUR KHERI | MD | PRADHANMANTRI GRAM SADAK YOJNA, LAKHIMPUR KHERI | IRRIGATION DIVISION, SHARDAAGAR, LAKHIMPUR KHERI |
| 451 | PRADHANMANTRI GRAM SADAK YOJNA, LAKHIMPUR KHERI | LAKHIMPUR KHERI | MD | IRRIGATION DIVISION, SHARDAAGAR, LAKHIMPUR KHERI | RURAL ENGINEERING DEPARTMENT DIVISION, LAKHIMPUR KHERI |
| 452 | IRRIGATION DIVISION, SHARDAAGAR, LAKHIMPUR KHERI | LAKHIMPUR KHERI | MD | RURAL ENGINEERING DEPARTMENT DIVISION, LAKHIMPUR KHERI | PRADHANMANTRI GRAM SADAK YOJNA, LAKHIMPUR KHERI |
| 453 | IRRIGATION DIVISION-1, LAKHIMPUR KHERI | LAKHIMPUR KHERI | LD | TUBE WELL DIVISION-1, LAKHIMPUR KHERI | CD-4 (Indo Nepal Border), PWD, LAKHIMPUR KHERI |
| 454 | TUBE WELL DIVISION-1, LAKHIMPUR KHERI | LAKHIMPUR KHERI | LD | CD-4 (Indo Nepal Border), PWD, LAKHIMPUR KHERI | IRRIGATION DIVISION-1, LAKHIMPUR KHERI |
| 455 | CD-4 (Indo Nepal Border), PWD, LAKHIMPUR KHERI | LAKHIMPUR KHERI | LD | IRRIGATION DIVISION-1, LAKHIMPUR KHERI | TUBE WELL DIVISION-1, LAKHIMPUR KHERI |
| 456 | IRRIGATION CONSTRUCTION DIVISION-1, LALTPUR | LALTPUR | HD | PROVINCIAL DIVISION, PWD, LALTPUR | IRRIGATION CONSTRUCTION DIVISION-2, LALTPUR |
| 457 | PROVINCIAL DIVISION, PWD, LALTPUR | LALTPUR | HD | IRRIGATION CONSTRUCTION DIVISION-2, LALTPUR | CONSTRUCTION DIVISION, LALTPUR |
| 458 | IRRIGATION CONSTRUCTION DIVISION-2, LALTPUR | LALTPUR | HD | CONSTRUCTION DIVISION, LALTPUR | IRRIGATION CONSTRUCTION DIVISION, MATATILA, LALTPUR |
| 459 | CONSTRUCTION DIVISION, LALTPUR | LALTPUR | HD | IRRIGATION CONSTRUCTION DIVISION, MATATILA, LALTPUR | PROVINCIAL DIVISION, PWD, LALTPUR |
| 460 | IRRIGATION CONSTRUCTION DIVISION, MATATILA, LALTPUR | LALTPUR | HD | IRRIGATION CONSTRUCTION DIVISION-1, LALTPUR | IRRIGATION DIVISION, LALTPUR |
| 461 | RURAL ENGINEERING DEPARTMENT DIVISION, LALTPUR | LALTPUR | MD | MINOR IRRIGATION DIVISION, LALTPUR | IRRIGATION DIVISION, LALTPUR |
| 462 | MINOR IRRIGATION DIVISION, LALTPUR | LALTPUR | MD | IRRIGATION DIVISION, LALTPUR | RURAL ENGINEERING DEPARTMENT DIVISION, LALTPUR |
| 463 | IRRIGATION DIVISION, LALTPUR | LALTPUR | MD | RURAL ENGINEERING DEPARTMENT DIVISION, LALTPUR | MINOR IRRIGATION DIVISION, LALTPUR |
| 464 | RAUGHAT CANAL CONSTRUCTION DIVISION, LALTPUR | LALTPUR | LD | RURAL ENGINEERING DEPARTMENT DIVISION, LALTPUR | MINOR IRRIGATION DIVISION, LALTPUR |
| 465 | CONSTRUCTION DIVISION-2, PWD, LUCKNOW | LUCKNOW | VHD | TUBE WELL DIVISION, LUCKNOW | BHAVAN PRAKOSH KHAND, PWD, LUCKNOW |
| 466 | TUBE WELL DIVISION, LUCKNOW | LUCKNOW | VHD | BHAVAN PRAKOSH KHAND, PWD, LUCKNOW | MAINTENANCE DIVISION-1 (CIVIL), LUCKNOW |
| 467 | BHAVAN PRAKOSH KHAND, PWD, LUCKNOW | LUCKNOW | VHD | MAINTENANCE DIVISION-1 (CIVIL), LUCKNOW | PROVINCIAL DIVISION, PWD, LUCKNOW |
| 468 | MAINTENANCE DIVISION-1 (CIVIL), LUCKNOW | LUCKNOW | VHD | PROVINCIAL DIVISION, PWD, LUCKNOW | NATIONAL HIGHWAY DIVISION, LUCKNOW |
| 469 | PROVINCIAL DIVISION, PWD, LUCKNOW | LUCKNOW | VHD | CONSTRUCTION DIVISION-1, PWD, LUCKNOW | CONSTRUCTION DIVISION-2, PWD, LUCKNOW |
| 470 | CONSTRUCTION DIVISION-1, PWD, LUCKNOW | LUCKNOW | VHD | NATIONAL HIGHWAY DIVISION, LUCKNOW | TUBE WELL DIVISION, LUCKNOW |
| 471 | NATIONAL HIGHWAY DIVISION, LUCKNOW | LUCKNOW | VHD | CONSTRUCTION DIVISION-2, PWD, LUCKNOW | ELECTRICAL MAINTENANCE DIVISION-1, PWD, LUCKNOW |
| 472 | ELECTRICAL MAINTENANCE DIVISION-2, PWD, LUCKNOW | LUCKNOW | HD | TY. DCU MAINTENANCE (ELECTRICAL), PWD, LUCKNOW | MAINTENANCE DIVISION-2 (CIVIL), LUCKNOW |
| 473 | TY. DCU MAINTENANCE (ELECTRICAL), PWD, LUCKNOW | LUCKNOW | HD | ELECTRICAL MAINTENANCE (ELECTRICAL), PWD, LUCKNOW | LUCKNOW DIVISION SHARDA CANAL, LUCKNOW |
| 474 | ELECTRICAL MAINTENANCE DIVISION-1, PWD, LUCKNOW | LUCKNOW | HD | MAINTENANCE DIVISION-2 (CIVIL), LUCKNOW | WORLD BANK DIVISION, PWD, LUCKNOW |
| 475 | MAINTENANCE DIVISION-2 (CIVIL), LUCKNOW | LUCKNOW | HD | WORLD BANK DIVISION, PWD, LUCKNOW | ELECTRICAL MAINTENANCE DIVISION-2, PWD, LUCKNOW |
| 476 | LUCKNOW DIVISION SHARDA CANAL, LUCKNOW | LUCKNOW | HD | WORLD BANK DIVISION, PWD, LUCKNOW | TY. DCU MAINTENANCE (ELECTRICAL), PWD, LUCKNOW |
| 477 | WORLD BANK DIVISION, PWD, LUCKNOW | LUCKNOW | HD | ELECTRICAL MAINTENANCE DIVISION-2, PWD, LUCKNOW | TY. MAINTENANCE DIVISION-3, LUCKNOW |
| 478 | RURAL ENGINEERING DEPARTMENT DIVISION, LUCKNOW | LUCKNOW | MD | MINOR IRRIGATION DIVISION, LUCKNOW | TY. MAINTENANCE DIVISION-3, LUCKNOW |
| 479 | MINOR IRRIGATION DIVISION, LUCKNOW | LUCKNOW | MD | TY. MAINTENANCE DIVISION-3, LUCKNOW | WORLD BANK DIVISION-1, PWD, LUCKNOW |
| 480 | TY. MAINTENANCE DIVISION-3, LUCKNOW | LUCKNOW | MD | WORLD BANK DIVISION-1, PWD, LUCKNOW | MECHANICAL DIVISION, PWD, LUCKNOW |
| 481 | WORLD BANK DIVISION-1, PWD, LUCKNOW | LUCKNOW | MD | TY DCU (EM), PWD, LUCKNOW | SHARDA CANAL DIVISION-2, LUCKNOW |
| 482 | TY DCU (EM), PWD, LUCKNOW | LUCKNOW | MD | MECHANICAL DIVISION, PWD, LUCKNOW | IRRIGATION DIVISION, LUCKNOW |
| 483 | MECHANICAL DIVISION, PWD, LUCKNOW | LUCKNOW | MD | SHARDA CANAL DIVISION-2, LUCKNOW | PRADHANMANTRI GRAM SADAK YOJNA, LUCKNOW |
| 484 | SHARDA CANAL DIVISION-2, LUCKNOW | LUCKNOW | MD | IRRIGATION DIVISION, LUCKNOW | TUBE WELL CONSTRUCTION DIVISION, LUCKNOW |
| 485 | IRRIGATION DIVISION, LUCKNOW | LUCKNOW | MD | PRADHANMANTRI GRAM SADAK YOJNA, LUCKNOW | COORD. & CHECK DIVISION, LUCKNOW |
| 486 | PRADHANMANTRI GRAM SADAK YOJNA, LUCKNOW | LUCKNOW | MD | TUBE WELL CONSTRUCTION DIVISION, LUCKNOW | RURAL ENGINEERING DEPARTMENT DIVISION, LUCKNOW |
| 487 | TUBE WELL CONSTRUCTION DIVISION, LUCKNOW | LUCKNOW | MD | COORD. & CHECK DIVISION, LUCKNOW | MINOR IRRIGATION DIVISION, LUCKNOW |
| 488 | COORD. & CHECK DIVISION, LUCKNOW | LUCKNOW | MD | RURAL ENGINEERING DEPARTMENT DIVISION, LUCKNOW | MINOR IRRIGATION DIVISION, LUCKNOW |
| 489 | State Project Monitoring Unit (SPMU) | LUCKNOW | LD | TY. MECHANICAL DIVISION-2, PWD, LUCKNOW | RAJYA Jai Sansadhan Abhiyan, Lucknow |
| 490 | TY. MECHANICAL DIVISION-2, PWD, LUCKNOW | LUCKNOW | LD | RAJYA Jai Sansadhan Abhiyan, Lucknow | SURVEY & INVESTIGATION DIVISION, LUCKNOW |
| 491 | RAJYA Jai Sansadhan Abhiyan, Lucknow | LUCKNOW | LD | SURVEY & INVESTIGATION DIVISION, LUCKNOW | IRRIGATION CONSTRUCTION DIVISION-1, LUCKNOW |
| 492 | SURVEY & INVESTIGATION DIVISION, LUCKNOW | LUCKNOW | LD | IRRIGATION CONSTRUCTION DIVISION-1, LUCKNOW | MINOR LIFT IRRIGATION DIVISION, LUCKNOW |
| 493 | IRRIGATION CONSTRUCTION DIVISION-1, LUCKNOW | LUCKNOW | LD | MINOR LIFT IRRIGATION DIVISION, LUCKNOW | Infigation Dam Automation Division, Lucknow |
| 494 | MINOR LIFT IRRIGATION DIVISION, LUCKNOW | LUCKNOW | LD | Infigation Dam Automation Division, Lucknow | INVENTORY CONTROL DIVISION, LUCKNOW |
| 495 | Infigation Dam Automation Division, Lucknow | LUCKNOW | LD | INVENTORY CONTROL DIVISION, LUCKNOW | PROJECT & PLANNING DIVISION-2, LUCKNOW |
| 496 | INVENTORY CONTROL DIVISION, LUCKNOW | LUCKNOW | LD | PROJECT & PLANNING DIVISION-2, LUCKNOW | RESEARCH INSTITUTE (PMD), LUCKNOW |
| 497 | PROJECT & PLANNING DIVISION-2, LUCKNOW | LUCKNOW | LD | RESEARCH INSTITUTE (PMD), LUCKNOW | TUBE WELL (1 & P) DIVISION-3, LUCKNOW |
| 498 | RESEARCH INSTITUTE (PMD), LUCKNOW | LUCKNOW | LD | TUBE WELL (1 & P) DIVISION-3, LUCKNOW | Quality Control Division, Lucknow |


| | | | | | | |
|-----|--|-------------|-------------|-----|--|--|
| 489 | TUBE WELL (I & P) DIVISION-3, LUCKNOW | LUCKNOW | LUCKNOW | LD | Quality Control Division, Lucknow | STORE & SUPPLY (M) DIVISION, LUCKNOW |
| 490 | Quality Control Division, Lucknow | LUCKNOW | LUCKNOW | LD | STORE & SUPPLY (M) DIVISION, LUCKNOW | GROUND WATER MECHANICAL DIVISION, LUCKNOW |
| 501 | STORE & SUPPLY (M) DIVISION, LUCKNOW | LUCKNOW | LUCKNOW | LD | GROUND WATER MECHANICAL DIVISION, LUCKNOW | TY. MECHANICAL DIVISION-2, PWD, LUCKNOW |
| 502 | GROUND WATER MECHANICAL DIVISION, LUCKNOW | LUCKNOW | LUCKNOW | LD | State Project Monitoring Unit (SPMU) | TY. MECHANICAL DIVISION-2, PWD, LUCKNOW |
| 503 | GROUND WATER DEPARTMENT DIVISION, LUCKNOW | LUCKNOW | LUCKNOW | LD | TY. MECHANICAL DIVISION-2, PWD, LUCKNOW | Rajya Jai Sansadhat Abhikaran, Lucknow |
| 504 | PROVINCIAL DIVISION, PWD, MAHARAJGANJ | MAHARAJGANJ | MAHARAJGANJ | VHD | CONSTRUCTION DIVISION, PWD, MAHARAJGANJ | IRRIGATION DIVISION-2, MAHARAJGANJ |
| 505 | CONSTRUCTION DIVISION, PWD, MAHARAJGANJ | MAHARAJGANJ | MAHARAJGANJ | VHD | IRRIGATION DIVISION-2, MAHARAJGANJ | PROVINCIAL DIVISION, PWD, MAHARAJGANJ |
| 506 | IRRIGATION DIVISION-2, MAHARAJGANJ | MAHARAJGANJ | MAHARAJGANJ | VHD | PROVINCIAL DIVISION, PWD, MAHARAJGANJ | CONSTRUCTION DIVISION, PWD, MAHARAJGANJ |
| 507 | RURAL ENGINEERING DEPARTMENT DIVISION, MAHARAJGANJ | MAHARAJGANJ | MAHARAJGANJ | HD | CD-I (INDO NEPAL BORDER), PWD, MAHARAJGANJ | PROVINCIAL DIVISION, PWD, MAHARAJGANJ |
| 508 | CD-I (INDO NEPAL BORDER), PWD, MAHARAJGANJ | MAHARAJGANJ | MAHARAJGANJ | HD | RURAL ENGINEERING DEPARTMENT DIVISION, MAHARAJGANJ | CONSTRUCTION DIVISION, PWD, MAHARAJGANJ |
| 509 | IRRIGATION DIVISION-1, MAHARAJGANJ | MAHARAJGANJ | MAHARAJGANJ | MD | RURAL ENGINEERING DEPARTMENT DIVISION, MAHARAJGANJ | CD-I (INDO NEPAL BORDER), PWD, MAHARAJGANJ |
| 510 | TUBE WELL DIVISION, MAHARAJGANJ | MAHARAJGANJ | MAHARAJGANJ | LD | IRRIGATION DIVISION-1, MAHARAJGANJ | RURAL ENGINEERING DEPARTMENT DIVISION, MAHARAJGANJ |
| 511 | KEN-BETWA LINK CANAL CONSTRUCTION DIVISION-1, MAHOBA | MAHOBA | MAHOBA | VHD | MAUDHA DAM CONSTRUCTION DIVISION-1, MAHOBA | PROVINCIAL DIVISION, PWD, MAHOBA |
| 512 | MAUDHA DAM CONSTRUCTION DIVISION-1, MAHOBA | MAHOBA | MAHOBA | VHD | PROVINCIAL DIVISION, PWD, MAHOBA | KEN-BETWA LINK CANAL CONSTRUCTION DIVISION-1, MAHOBA |
| 513 | PROVINCIAL DIVISION, PWD, MAHOBA | MAHOBA | MAHOBA | HD | MAUDHA DAM CONSTRUCTION DIVISION-1, MAHOBA | KEN-BETWA LINK CANAL CONSTRUCTION DIVISION-1, MAHOBA |
| 514 | IRRIGATION DIVISION, MAHOBA | MAHOBA | MAHOBA | MD | MINOR IRRIGATION DIVISION, MAHOBA | CONSTRUCTION DIVISION-1, PWD, MAHOBA |
| 515 | MINOR IRRIGATION DIVISION, MAHOBA | MAHOBA | MAHOBA | MD | CONSTRUCTION DIVISION-1, PWD, MAHOBA | RURAL ENGINEERING DEPARTMENT DIVISION, MAHOBA |
| 516 | CONSTRUCTION DIVISION-1, PWD, MAHOBA | MAHOBA | MAHOBA | MD | RURAL ENGINEERING DEPARTMENT DIVISION, MAHOBA | IRRIGATION DIVISION, MAHOBA |
| 517 | RURAL ENGINEERING DEPARTMENT DIVISION, MAHOBA | MAHOBA | MAHOBA | MD | IRRIGATION DIVISION, MAHOBA | MINOR IRRIGATION DIVISION, MAHOBA |
| 518 | PROVINCIAL DIVISION, PWD, MAINPURI | MAINPURI | MAINPURI | HD | CONSTRUCTION DIVISION, PWD, MAINPURI | CONSTRUCTION DIVISION-3, PWD, MAINPURI |
| 519 | CONSTRUCTION DIVISION, PWD, MAINPURI | MAINPURI | MAINPURI | HD | CONSTRUCTION DIVISION-3, PWD, MAINPURI | PROVINCIAL DIVISION, PWD, MAINPURI |
| 520 | CONSTRUCTION DIVISION-3, PWD, MAINPURI | MAINPURI | MAINPURI | HD | PROVINCIAL DIVISION, PWD, MAINPURI | CONSTRUCTION DIVISION, PWD, MAINPURI |
| 521 | L G C DIVISION, MAINPURI | MAINPURI | MAINPURI | MD | PROVINCIAL DIVISION, PWD, MAINPURI | CONSTRUCTION DIVISION, PWD, MAINPURI |
| 522 | RURAL ENGINEERING DEPARTMENT DIVISION, MAINPURI | MAINPURI | MAINPURI | LD | TUBE WELL DIVISION, MAINPURI | L G C DIVISION, MAINPURI |
| 523 | TUBE WELL DIVISION, MAINPURI | MAINPURI | MAINPURI | LD | RURAL ENGINEERING DEPARTMENT DIVISION, MAINPURI | L G C DIVISION, MAINPURI |
| 524 | PROVINCIAL DIVISION, PWD, MATHURA | MATHURA | MATHURA | VHD | CONSTRUCTION DIVISION-1, PWD, MATHURA | IRRIGATION CONSTRUCTION DIVISION, MATHURA |
| 525 | CONSTRUCTION DIVISION-1, PWD, MATHURA | MATHURA | MATHURA | VHD | IRRIGATION CONSTRUCTION DIVISION, MATHURA | PROVINCIAL DIVISION, PWD, MATHURA |
| 526 | IRRIGATION CONSTRUCTION DIVISION, MATHURA | MATHURA | MATHURA | HD | CONSTRUCTION DIVISION-1, PWD, MATHURA | PROVINCIAL DIVISION, PWD, MATHURA |
| 527 | UPPER DIVISION AGRA CANAL, MATHURA | MATHURA | MATHURA | MD | RURAL ENGINEERING DEPARTMENT DIVISION, MATHURA | LOWER MONT BRANCH GANGA CANAL DIVISION, MATHURA |
| 528 | RURAL ENGINEERING DEPARTMENT DIVISION, MATHURA | MATHURA | MATHURA | MD | RURAL ENGINEERING DEPARTMENT DIVISION, MATHURA | UPPER DIVISION AGRA CANAL, MATHURA |
| 529 | LOWER MONT BRANCH GANGA CANAL DIVISION, MATHURA | MATHURA | MATHURA | MD | UPPER DIVISION AGRA CANAL, MATHURA | RURAL ENGINEERING DEPARTMENT DIVISION, MATHURA |
| 530 | CONSTRUCTION DIVISION, PWD, MAU | MAU | MAU | HD | PROVINCIAL DIVISION, PWD, MAU | IRRIGATION DIVISION, MAU |
| 531 | PROVINCIAL DIVISION, PWD, MAU | MAU | MAU | HD | IRRIGATION DIVISION, MAU | CONSTRUCTION DIVISION, PWD, MAU |
| 532 | IRRIGATION DIVISION, MAU | MAU | MAU | HD | CONSTRUCTION DIVISION, PWD, MAU | PROVINCIAL DIVISION, PWD, MAU |
| 533 | RURAL ENGINEERING DEPARTMENT DIVISION, MAU | MAU | MAU | MD | CONSTRUCTION DIVISION, PWD, MAU | PROVINCIAL DIVISION, PWD, MAU |
| 534 | PRADHANMANTRI GRAM SADAK YOJANA, MAU | MAU | MAU | LD | TUBE WELL DIVISION, MAU | RURAL ENGINEERING DEPARTMENT DIVISION, MAU |
| 535 | TUBE WELL DIVISION, MAU | MAU | MAU | LD | PRADHANMANTRI GRAM SADAK YOJANA, MAU | RURAL ENGINEERING DEPARTMENT DIVISION, MAU |
| 536 | PROVINCIAL DIVISION, PWD, MEERUT | MEERUT | MEERUT | VHD | CONSTRUCTION DIVISION (BUILDING), PWD, MEERUT | MGCC DIVISION-6, MEERUT |
| 537 | CONSTRUCTION DIVISION (BUILDING), PWD, MEERUT | MEERUT | MEERUT | VHD | CONSTRUCTION DIVISION (BUILDING), PWD, MEERUT | MEERUT DIVISION GANGA CANAL, MEERUT |
| 538 | MGCC DIVISION-6, MEERUT | MEERUT | MEERUT | HD | MGCC DIVISION-6, MEERUT | RURAL ENGINEERING DEPARTMENT DIVISION, MEERUT |
| 539 | MEERUT DIVISION GANGA CANAL, MEERUT | MEERUT | MEERUT | HD | MEERUT DIVISION GANGA CANAL, MEERUT | DRAINAGE DIVISION-4, MEERUT |
| 540 | RURAL ENGINEERING DEPARTMENT DIVISION, MEERUT | MEERUT | MEERUT | HD | RURAL ENGINEERING DEPARTMENT DIVISION, MEERUT | CONSTRUCTION DIVISION (BUILDING), PWD, MEERUT |
| 541 | DRAINAGE DIVISION-4, MEERUT | MEERUT | MEERUT | HD | CONSTRUCTION DIVISION (BUILDING), PWD, MEERUT | MGCC DIVISION-6, MEERUT |
| 542 | ANUPSAGAR BGC, MEERUT | MEERUT | MEERUT | MD | CONSTRUCTION DIVISION, PWD, MEERUT | CONSTRUCTION DIVISION (BUILDING), PWD, MEERUT |
| 543 | CONSTRUCTION DIVISION, PWD, MEERUT | MEERUT | MEERUT | MD | ANUPSAGAR BGC, MEERUT | MGCC DIVISION-6, MEERUT |
| 544 | IRRIGATION WORKSHOP DIVISION, MEERUT | MEERUT | MEERUT | LD | IRRIGATION CONSTRUCTION DIVISION, MEERUT | ELECTRICAL & MECHANICAL DIVISION, PWD, MEERUT |
| 545 | IRRIGATION CONSTRUCTION DIVISION, MEERUT | MEERUT | MEERUT | LD | ELECTRICAL & MECHANICAL DIVISION, MEERUT | MINOR IRRIGATION DIVISION, MEERUT |
| 546 | ELECTRICAL & MECHANICAL DIVISION, PWD, MEERUT | MEERUT | MEERUT | LD | MINOR IRRIGATION DIVISION, MEERUT | TUBE WELL DIVISION EAST, MEERUT |
| 547 | MINOR IRRIGATION DIVISION, MEERUT | MEERUT | MEERUT | LD | TUBE WELL DIVISION EAST, MEERUT | I&P (WR) DIVISION, MEERUT |
| 548 | TUBE WELL DIVISION EAST, MEERUT | MEERUT | MEERUT | LD | I&P (WR) DIVISION, MEERUT | IRRIGATION WORKSHOP DIVISION, MEERUT |
| 549 | IRRIGATION WORKSHOP DIVISION, MEERUT | MEERUT | MEERUT | LD | IRRIGATION WORKSHOP DIVISION, MEERUT | IRRIGATION CONSTRUCTION DIVISION, MEERUT |
| 550 | I&P (WR) DIVISION, MEERUT | MEERUT | MEERUT | LD | IRRIGATION CONSTRUCTION DIVISION, MEERUT | ELECTRICAL & MECHANICAL DIVISION, PWD, MEERUT |
| 551 | PROVINCIAL DIVISION, PWD, MIRZAPUR | MIRZAPUR | MIRZAPUR | VHD | CONSTRUCTION DIVISION-2, PWD, MIRZAPUR | NATIONAL HIGHWAY DIVISION, PWD, MIRZAPUR |
| 552 | CONSTRUCTION DIVISION-2, PWD, MIRZAPUR | MIRZAPUR | MIRZAPUR | VHD | PROVINCIAL DIVISION, PWD, MIRZAPUR | MIRZAPUR CANAL DIVISION, MIRZAPUR |
| 553 | NATIONAL HIGHWAY DIVISION, PWD, MIRZAPUR | MIRZAPUR | MIRZAPUR | HD | MIRZAPUR CANAL DIVISION, MIRZAPUR | PROVINCIAL DIVISION, PWD, MIRZAPUR |
| 554 | MIRZAPUR CANAL DIVISION, MIRZAPUR | MIRZAPUR | MIRZAPUR | HD | NATIONAL HIGHWAY DIVISION, PWD, MIRZAPUR | CONSTRUCTION DIVISION-2, PWD, MIRZAPUR |
| 555 | RURAL ENGINEERING DEPARTMENT DIVISION, MIRZAPUR | MIRZAPUR | MIRZAPUR | MD | IRRIGATION DIVISION, CHUNAR, MIRZAPUR | SIRSI DAM DIVISION, MIRZAPUR |

| | | | | | | |
|-----|--|---------------|-----|--|---------------|---|
| 556 | IRRIGATION DIVISION, CHUNAR, MIRZAPUR | MIRZAPUR | MD | SIRSI DAM DIVISION, MIRZAPUR | MIRZAPUR | BANSAGAR CANAL CONSTRUCTION DIVISION-5, MIRZAPUR |
| 557 | SIRSI DAM DIVISION, MIRZAPUR | MIRZAPUR | MD | BANSAGAR CANAL CONSTRUCTION DIVISION-5, MIRZAPUR | MIRZAPUR | MINOR IRRIGATION DIVISION, MIRZAPUR |
| 558 | BANSAGAR CANAL CONSTRUCTION DIVISION-5, MIRZAPUR | MIRZAPUR | MD | MINOR IRRIGATION DIVISION, MIRZAPUR | MIRZAPUR | MINOR IRRIGATION DIVISION, MIRZAPUR |
| 559 | MINOR IRRIGATION DIVISION, MIRZAPUR | MIRZAPUR | MD | MINOR IRRIGATION DIVISION, MIRZAPUR | MIRZAPUR | MINOR IRRIGATION DIVISION, MIRZAPUR |
| 560 | MINOR IRRIGATION DIVISION, MIRZAPUR | MIRZAPUR | MD | MINOR IRRIGATION DIVISION, MIRZAPUR | MIRZAPUR | MINOR IRRIGATION DIVISION, MIRZAPUR |
| 561 | Kanhar Canal Project Khand-6, Mirzapur | MIRZAPUR | MD | Kanhar Canal Project Khand-6, Mirzapur | MIRZAPUR | Kanhar Canal Project Khand-6, Mirzapur |
| 562 | BANSAGAR CANAL CONSTRUCTION DIVISION-8, MIRZAPUR | MIRZAPUR | MD | BANSAGAR CANAL CONSTRUCTION DIVISION-8, MIRZAPUR | MIRZAPUR | BANSAGAR CANAL CONSTRUCTION DIVISION-8, MIRZAPUR |
| 563 | BANSAGAR CANAL CONSTRUCTION DIVISION-10, MIRZAPUR | MIRZAPUR | MD | RURAL ENGINEERING DEPARTMENT DIVISION, MIRZAPUR | MIRZAPUR | RURAL ENGINEERING DEPARTMENT DIVISION, MIRZAPUR |
| 564 | TUBEWELL DIVISION, MIRZAPUR | MIRZAPUR | LD | TUBEWELL DIVISION, MIRZAPUR | MIRZAPUR | IRRIGATION DIVISION, CHUNAR, MIRZAPUR |
| 565 | BANSAGAR CANAL CONSTRUCTION DIVISION-7, MIRZAPUR | MIRZAPUR | LD | BANSAGAR CANAL CONSTRUCTION DIVISION-7, MIRZAPUR | MIRZAPUR | BANSAGAR CANAL CONSTRUCTION DIVISION-7, MIRZAPUR |
| 566 | GRAND WATER GEOPHYSICAL DIVISION, MIRZAPUR | MIRZAPUR | LD | BANSAGAR CANAL CONSTRUCTION DIVISION-7, MIRZAPUR | MIRZAPUR | CONSTRUCTION DIVISION (BUILDING), PWD, MIRZAPUR |
| 567 | IRP DIVISION (WR), MIRZAPUR | MIRZAPUR | LD | CONSTRUCTION DIVISION (BUILDING), PWD, MIRZAPUR | MIRZAPUR | CONSTRUCTION DIVISION (BUILDING), PWD, MIRZAPUR |
| 568 | QUALITY CONTROL DIVISION-3, MIRZAPUR | MIRZAPUR | LD | QUALITY CONTROL DIVISION-3, MIRZAPUR | MIRZAPUR | CONSTRUCTION DIVISION (BUILDING), PWD, MIRZAPUR |
| 569 | CONSTRUCTION DIVISION (BUILDING), PWD, MIRZAPUR | MIRZAPUR | LD | CONSTRUCTION DIVISION (BUILDING), PWD, MIRZAPUR | MIRZAPUR | BANSAGAR CANAL CONSTRUCTION DIVISION-10, MIRZAPUR |
| 570 | WORLD BANK DIVISION, PWD, MORADABAD | MORADABAD | VHD | PROVINCIAL DIVISION, PWD, MORADABAD | MORADABAD | BANSAGAR CANAL CONSTRUCTION DIVISION-7, MIRZAPUR |
| 571 | PROVINCIAL DIVISION, PWD, MORADABAD | MORADABAD | VHD | WORLD BANK DIVISION, PWD, MORADABAD | MORADABAD | IRP DIVISION (WR), MIRZAPUR |
| 572 | MGCC 15, MORADABAD | MORADABAD | HD | RURAL ENGINEERING DEPARTMENT DIVISION, MORADABAD | MORADABAD | CONSTRUCTION DIVISION (BUILDING), PWD, MIRZAPUR |
| 573 | RURAL ENGINEERING DEPARTMENT DIVISION, MORADABAD | MORADABAD | HD | RURAL ENGINEERING DEPARTMENT DIVISION, MORADABAD | MORADABAD | CONSTRUCTION DIVISION (BUILDING), PWD, MIRZAPUR |
| 574 | CONSTRUCTION DIVISION-1, PWD, MORADABAD | MORADABAD | MD | MGCC 15, MORADABAD | MORADABAD | CONSTRUCTION DIVISION (BUILDING), PWD, MIRZAPUR |
| 575 | MINOR IRRIGATION DIVISION, MORADABAD | MORADABAD | MD | FLOOD DIVISION, MORADABAD | MORADABAD | CONSTRUCTION DIVISION (BUILDING), PWD, MIRZAPUR |
| 576 | FLOOD DIVISION, MORADABAD | MORADABAD | MD | IRRIGATION DIVISION, MORADABAD | MORADABAD | CONSTRUCTION DIVISION (BUILDING), PWD, MIRZAPUR |
| 577 | IRRIGATION DIVISION, MORADABAD | MORADABAD | MD | TY. ELECTRICAL & MECHANICAL DIVISION, PWD, MORADABAD | MORADABAD | CONSTRUCTION DIVISION (BUILDING), PWD, MIRZAPUR |
| 578 | TY. ELECTRICAL & MECHANICAL DIVISION, PWD, MORADABAD | MORADABAD | MD | CONSTRUCTION DIVISION-1, PWD, MORADABAD | MORADABAD | CONSTRUCTION DIVISION (BUILDING), PWD, MIRZAPUR |
| 579 | TUBEWELL CONSTRUCTION DIVISION, MORADABAD | MORADABAD | LD | TUBEWELL DIVISION-1, MORADABAD | MORADABAD | CONSTRUCTION DIVISION (BUILDING), PWD, MIRZAPUR |
| 580 | TUBEWELL DIVISION-1, MORADABAD | MORADABAD | LD | CONSTRUCTION DIVISION (BHAWANI), PWD, MORADABAD | MORADABAD | CONSTRUCTION DIVISION (BUILDING), PWD, MIRZAPUR |
| 581 | CONSTRUCTION DIVISION (BHAWANI), PWD, MORADABAD | MORADABAD | LD | IRP DIVISION, MORADABAD | MORADABAD | CONSTRUCTION DIVISION (BUILDING), PWD, MIRZAPUR |
| 582 | IRP DIVISION, MORADABAD | MORADABAD | LD | TUBEWELL CONSTRUCTION DIVISION, MORADABAD | MORADABAD | CONSTRUCTION DIVISION (BUILDING), PWD, MIRZAPUR |
| 583 | GRAND WATER DEPARTMENT DIVISION, MORADABAD | MORADABAD | LD | TUBEWELL CONSTRUCTION DIVISION, MORADABAD | MORADABAD | CONSTRUCTION DIVISION (BUILDING), PWD, MIRZAPUR |
| 584 | PROVINCIAL DIVISION, PWD, MUZAFFARNAGAR | MUZAFFARNAGAR | VHD | CONSTRUCTION DIVISION-1, PWD, MUZAFFARNAGAR | MUZAFFARNAGAR | CONSTRUCTION DIVISION (BUILDING), PWD, MIRZAPUR |
| 585 | CONSTRUCTION DIVISION-1, PWD, MUZAFFARNAGAR | MUZAFFARNAGAR | HD | MUZAFFARNAGAR DIVISION GANGA CANAL, MUZAFFARNAGAR | MUZAFFARNAGAR | CONSTRUCTION DIVISION (BUILDING), PWD, MIRZAPUR |
| 586 | MUZAFFARNAGAR DIVISION GANGA CANAL, MUZAFFARNAGAR | MUZAFFARNAGAR | HD | RURAL ENGINEERING DEPARTMENT DIVISION, MUZAFFARNAGAR | MUZAFFARNAGAR | CONSTRUCTION DIVISION (BUILDING), PWD, MIRZAPUR |
| 587 | RURAL ENGINEERING DEPARTMENT DIVISION, MUZAFFARNAGAR | MUZAFFARNAGAR | HD | CONSTRUCTION DIVISION-1, PWD, MUZAFFARNAGAR | MUZAFFARNAGAR | CONSTRUCTION DIVISION (BUILDING), PWD, MIRZAPUR |
| 588 | TUBEWELL CONSTRUCTION DIVISION, MUZAFFARNAGAR | MUZAFFARNAGAR | LD | DRAINAGE DIVISION, MUZAFFARNAGAR | MUZAFFARNAGAR | CONSTRUCTION DIVISION (BUILDING), PWD, MIRZAPUR |
| 589 | DRAINAGE DIVISION, MUZAFFARNAGAR | MUZAFFARNAGAR | LD | TUBEWELL DIVISION, MUZAFFARNAGAR | MUZAFFARNAGAR | CONSTRUCTION DIVISION (BUILDING), PWD, MIRZAPUR |
| 590 | TUBEWELL DIVISION, MUZAFFARNAGAR | MUZAFFARNAGAR | LD | CONSTRUCTION DIVISION, MUZAFFARNAGAR | MUZAFFARNAGAR | CONSTRUCTION DIVISION (BUILDING), PWD, MIRZAPUR |
| 591 | HEAD WORKS AGRA CANAL, OKHLA, NEW DELHI | NEW DELHI | VHD | IRRIGATION CONSTRUCTION DIVISION, OKHLA, NEW DELHI | NEW DELHI | CONSTRUCTION DIVISION (BUILDING), PWD, MIRZAPUR |
| 592 | IRRIGATION CONSTRUCTION DIVISION, OKHLA, NEW DELHI | NEW DELHI | MD | HEAD WORKS AGRA CANAL, OKHLA, NEW DELHI | NEW DELHI | CONSTRUCTION DIVISION (BUILDING), PWD, MIRZAPUR |
| 593 | CONSTRUCTION DIVISION-1, PWD, PILIBHIT | PILIBHIT | HD | PROVINCIAL DIVISION, PWD, PILIBHIT | PILIBHIT | CONSTRUCTION DIVISION (BUILDING), PWD, MIRZAPUR |
| 594 | PROVINCIAL DIVISION, PWD, PILIBHIT | PILIBHIT | HD | RURAL ENGINEERING DEPARTMENT DIVISION, PILIBHIT | PILIBHIT | CONSTRUCTION DIVISION (BUILDING), PWD, MIRZAPUR |
| 595 | RURAL ENGINEERING DEPARTMENT DIVISION, PILIBHIT | PILIBHIT | HD | FLOOD DIVISION, PILIBHIT | PILIBHIT | CONSTRUCTION DIVISION (BUILDING), PWD, MIRZAPUR |
| 596 | FLOOD DIVISION, PILIBHIT | PILIBHIT | HD | CONSTRUCTION DIVISION-1, PWD, PILIBHIT | PILIBHIT | CONSTRUCTION DIVISION (BUILDING), PWD, MIRZAPUR |
| 597 | SARDA SAGAR DAM, PILIBHIT | PILIBHIT | MD | CONSTRUCTION DIVISION-1, PWD, PILIBHIT | PILIBHIT | CONSTRUCTION DIVISION (BUILDING), PWD, MIRZAPUR |
| 598 | C D 2 (Inho Nepal Border), PWD, PILIBHIT | PILIBHIT | LD | SARDA SAGAR DAM, PILIBHIT | PILIBHIT | CONSTRUCTION DIVISION (BUILDING), PWD, MIRZAPUR |
| 599 | PROVINCIAL DIVISION, PWD, PRAYAGRAH | PRAYAGRAH | VHD | CONSTRUCTION DIVISION-2, PWD, PRAYAGRAH | PRAYAGRAH | CONSTRUCTION DIVISION (BUILDING), PWD, MIRZAPUR |
| 600 | CONSTRUCTION DIVISION-2, PWD, PRAYAGRAH | PRAYAGRAH | VHD | CONSTRUCTION DIVISION-1, PWD, PRAYAGRAH | PRAYAGRAH | CONSTRUCTION DIVISION (BUILDING), PWD, MIRZAPUR |
| 601 | CONSTRUCTION DIVISION-1, PWD, PRAYAGRAH | PRAYAGRAH | VHD | RURAL ENGINEERING DEPARTMENT DIVISION, PRAYAGRAH | PRAYAGRAH | CONSTRUCTION DIVISION (BUILDING), PWD, MIRZAPUR |
| 602 | RURAL ENGINEERING DEPARTMENT DIVISION, PRAYAGRAH | PRAYAGRAH | VHD | PROVINCIAL DIVISION, PWD, PRAYAGRAH | PRAYAGRAH | CONSTRUCTION DIVISION (BUILDING), PWD, MIRZAPUR |
| 603 | IRRIGATION DIVISION, PRAYAGRAH | PRAYAGRAH | MD | PROVINCIAL DIVISION, PWD, PRAYAGRAH | PRAYAGRAH | CONSTRUCTION DIVISION (BUILDING), PWD, MIRZAPUR |
| 604 | IRP DIVISION, PRAYAGRAH | PRAYAGRAH | LD | IRRIGATION DIVISION-1, PRAYAGRAH | PRAYAGRAH | CONSTRUCTION DIVISION (BUILDING), PWD, MIRZAPUR |
| 605 | IRRIGATION DIVISION-1, PRAYAGRAH | PRAYAGRAH | LD | SSK 51, PRAYAGRAH | PRAYAGRAH | CONSTRUCTION DIVISION (BUILDING), PWD, MIRZAPUR |
| 606 | NATIONAL HIGHWAY DIVISION-1, PRAYAGRAH | PRAYAGRAH | VHD | CONSTRUCTION DIVISION-4, PWD, PRAYAGRAH | PRAYAGRAH | CONSTRUCTION DIVISION (BUILDING), PWD, MIRZAPUR |
| 607 | CONSTRUCTION DIVISION-4, PWD, PRAYAGRAH | PRAYAGRAH | VHD | CONSTRUCTION DIVISION-1, PWD, PRAYAGRAH | PRAYAGRAH | CONSTRUCTION DIVISION (BUILDING), PWD, MIRZAPUR |
| 608 | CONSTRUCTION DIVISION-1, PWD, PRAYAGRAH | PRAYAGRAH | VHD | PROVINCIAL DIVISION, PWD, PRAYAGRAH | PRAYAGRAH | CONSTRUCTION DIVISION (BUILDING), PWD, MIRZAPUR |
| 609 | PROVINCIAL DIVISION, PWD, PRAYAGRAH | PRAYAGRAH | VHD | CONSTRUCTION DIVISION-3, PWD, PRAYAGRAH | PRAYAGRAH | CONSTRUCTION DIVISION (BUILDING), PWD, MIRZAPUR |
| 610 | CONSTRUCTION DIVISION-3, PWD, PRAYAGRAH | PRAYAGRAH | VHD | NATIONAL HIGHWAY DIVISION-1, PRAYAGRAH | PRAYAGRAH | CONSTRUCTION DIVISION (BUILDING), PWD, MIRZAPUR |

| | | | | | |
|-----|---|------------------|-----|---|---|
| 611 | RURAL ENGINEERING DEPARTMENT DIVISION, PRAYAGRAJ | PRAYAGRAJ | HD | PRADHANMANTRI GRAM SADAK YOJNA, PRAYAGRAJ | MINOR IRRIGATION DIVISION, PRAYAGRAJ |
| 612 | PRADHANMANTRI GRAM SADAK YOJNA, PRAYAGRAJ | PRAYAGRAJ | HD | MINOR IRRIGATION DIVISION, PRAYAGRAJ | BELAN CANAL DIVISION, PRAYAGRAJ |
| 613 | MINOR IRRIGATION DIVISION, PRAYAGRAJ | PRAYAGRAJ | HD | BELAN CANAL DIVISION, PRAYAGRAJ | RURAL ENGINEERING DEPARTMENT DIVISION, PRAYAGRAJ |
| 614 | BELAN CANAL DIVISION, PRAYAGRAJ | PRAYAGRAJ | HD | RURAL ENGINEERING DEPARTMENT DIVISION, PRAYAGRAJ | PRADHANMANTRI GRAM SADAK YOJNA, PRAYAGRAJ |
| 615 | ELECTRICAL & MECHANICAL DIVISION, PWD, PRAYAGRAJ | PRAYAGRAJ | MD | FLOOD WORKS DIVISION, PRAYAGRAJ | SSK 39, PRAYAGRAJ |
| 616 | FLOOD WORKS DIVISION, PRAYAGRAJ | PRAYAGRAJ | MD | SSK 39, PRAYAGRAJ | ELECTRICAL & MECHANICAL DIVISION, PWD, PRAYAGRAJ |
| 617 | SSK 39, PRAYAGRAJ | PRAYAGRAJ | MD | ELECTRICAL & MECHANICAL DIVISION, PWD, PRAYAGRAJ | FLOOD WORKS DIVISION, PRAYAGRAJ |
| 618 | TUBEWELL CONSTRUCTION DIVISION, PRAYAGRAJ | PRAYAGRAJ | LD | TUBEWELL CONSTRUCTION DIVISION, PRAYAGRAJ | IRRIGATION DIVISION-1, PRAYAGRAJ |
| 619 | TUBEWELL DIVISION-2, PRAYAGRAJ | PRAYAGRAJ | LD | IRRIGATION DIVISION-2, PRAYAGRAJ | TUBEWELL DIVISION-3, PRAYAGRAJ |
| 620 | IRRIGATION DIVISION-1, PRAYAGRAJ | PRAYAGRAJ | LD | IRRIGATION DIVISION-3, PRAYAGRAJ | IRRIGATION WORKSHOP DIVISION, NAINI, PRAYAGRAJ |
| 621 | TUBEWELL DIVISION-3, PRAYAGRAJ | PRAYAGRAJ | LD | IRRIGATION WORKSHOP DIVISION, NAINI, PRAYAGRAJ | MINOR LIFT CANAL DIVISION, PRAYAGRAJ |
| 622 | IRRIGATION WORKSHOP DIVISION, NAINI, PRAYAGRAJ | PRAYAGRAJ | LD | MINOR LIFT CANAL DIVISION, PRAYAGRAJ | TONS PUMP CANAL DIVISION, PRAYAGRAJ |
| 623 | MINOR LIFT CANAL DIVISION, PRAYAGRAJ | PRAYAGRAJ | LD | TONS PUMP CANAL DIVISION, PRAYAGRAJ | TUBEWELL DIVISION-1, PRAYAGRAJ |
| 624 | TONS PUMP CANAL DIVISION, PRAYAGRAJ | PRAYAGRAJ | LD | TUBEWELL DIVISION-4, PRAYAGRAJ | BAGLA CANAL DIVISION, PRAYAGRAJ |
| 625 | TUBEWELL DIVISION-1, PRAYAGRAJ | PRAYAGRAJ | LD | BAGLA CANAL DIVISION, PRAYAGRAJ | LIFT IRRIGATION DIVISION, PRAYAGRAJ |
| 626 | BAGLA CANAL DIVISION, PRAYAGRAJ | PRAYAGRAJ | LD | LIFT IRRIGATION DIVISION, PRAYAGRAJ | BAN SAGAR CCD-1, PRAYAGRAJ |
| 627 | LIFT IRRIGATION DIVISION, PRAYAGRAJ | PRAYAGRAJ | LD | GROUND WATER DIVISION, PRAYAGRAJ | QUALITY CONTROL DIVISION, PRAYAGRAJ |
| 628 | BAN SAGAR CCD-1, PRAYAGRAJ | PRAYAGRAJ | LD | QUALITY CONTROL DIVISION, PRAYAGRAJ | GROUND WATER DIVISION, PRAYAGRAJ |
| 629 | GROUND WATER DIVISION, PRAYAGRAJ | PRAYAGRAJ | LD | ANUSANDHAN & NIYOJAN KHAND, PRAYAGRAJ | ANUSANDHAN & NIYOJAN KHAND, PRAYAGRAJ |
| 630 | QUALITY CONTROL DIVISION, PRAYAGRAJ | PRAYAGRAJ | LD | ANUSANDHAN & NIYOJAN KHAND, PRAYAGRAJ | TUBEWELL CONSTRUCTION DIVISION, PRAYAGRAJ |
| 631 | ANUSANDHAN & NIYOJAN KHAND, PRAYAGRAJ | PRAYAGRAJ | LD | TUBEWELL CONSTRUCTION DIVISION, PRAYAGRAJ | TUBEWELL DIVISION-2, PRAYAGRAJ |
| 632 | PROVINCIAL DIVISION, PWD, RAEBARELI | RAEBARELI | VHD | CONSTRUCTION DIVISION-2, PWD, RAEBARELI | CONSTRUCTION DIVISION-1, PWD, RAEBARELI |
| 633 | CONSTRUCTION DIVISION-1, PWD, RAEBARELI | RAEBARELI | VHD | PROVINCIAL DIVISION, PWD, RAEBARELI | MINOR IRRIGATION DIVISION, RAEBARELI |
| 634 | CONSTRUCTION DIVISION-2, PWD, RAEBARELI | RAEBARELI | HD | MINOR IRRIGATION DIVISION, RAEBARELI | RURAL ENGINEERING DEPARTMENT DIVISION, RAEBARELI |
| 635 | MINOR IRRIGATION DIVISION, RAEBARELI | RAEBARELI | HD | RURAL ENGINEERING DEPARTMENT DIVISION, RAEBARELI | RURAL ENGINEERING DEPARTMENT DIVISION, RAEBARELI |
| 636 | RURAL ENGINEERING DEPARTMENT DIVISION, RAEBARELI | RAEBARELI | HD | CONSTRUCTION DIVISION-1, PWD, RAEBARELI | CONSTRUCTION DIVISION-1, PWD, RAEBARELI |
| 637 | SARDA CANAL (SOUTH), RAEBARELI | RAEBARELI | MD | CONSTRUCTION DIVISION-1, PWD, RAEBARELI | MINOR IRRIGATION DIVISION, RAEBARELI |
| 638 | SSK-45, RAEBARELI | RAEBARELI | LD | TUBE WELL DIVISION, RAEBARELI | MINOR IRRIGATION DIVISION, RAEBARELI |
| 639 | TUBE WELL DIVISION, RAEBARELI | RAEBARELI | LD | SSK-6, RAEBARELI | SSK-6, RAEBARELI |
| 640 | SSK-6, RAEBARELI | RAEBARELI | LD | IRRIGATION DIVISION, RAEBARELI | IRRIGATION DIVISION, RAEBARELI |
| 641 | IRRIGATION DIVISION, RAEBARELI | RAEBARELI | LD | SSK-45, RAEBARELI | SSK-45, RAEBARELI |
| 642 | PROVINCIAL DIVISION, PWD, RAMPUR | RAMPUR | LD | CONSTRUCTION DIVISION, PWD, RAMPUR | TUBE WELL DIVISION, RAEBARELI |
| 643 | CONSTRUCTION DIVISION, PWD, RAMPUR | RAMPUR | HD | RURAL ENGINEERING DEPARTMENT DIVISION, RAMPUR | RURAL ENGINEERING DEPARTMENT DIVISION, RAMPUR |
| 644 | RURAL ENGINEERING DEPARTMENT DIVISION, RAMPUR | RAMPUR | HD | PROVINCIAL DIVISION, PWD, RAMPUR | PROVINCIAL DIVISION, PWD, RAMPUR |
| 645 | RAMPUR CANAL DIVISION, RAMPUR | RAMPUR | MD | PROVINCIAL DIVISION, PWD, RAMPUR | CONSTRUCTION DIVISION, PWD, RAMPUR |
| 646 | TUBE WELL DIVISION, RAMPUR | RAMPUR | MD | RAMPUR CANAL DIVISION, RAMPUR | CONSTRUCTION DIVISION, PWD, RAMPUR |
| 647 | CONSTRUCTION DIVISION-3, PWD, SAHARANPUR | SAHARANPUR | LD | RAMPUR CANAL DIVISION, RAMPUR | RURAL ENGINEERING DEPARTMENT DIVISION, RAMPUR |
| 648 | PROVINCIAL DIVISION, PWD, SAHARANPUR | SAHARANPUR | VHD | PROVINCIAL DIVISION, PWD, SAHARANPUR | CONSTRUCTION DIVISION, PWD, SAHARANPUR |
| 649 | CONSTRUCTION DIVISION, PWD, SAHARANPUR | SAHARANPUR | VHD | CONSTRUCTION DIVISION-3, PWD, SAHARANPUR | CONSTRUCTION DIVISION-3, PWD, SAHARANPUR |
| 650 | U D E Y CANAL DIVISION, SAHARANPUR | SAHARANPUR | HD | U D E Y CANAL DIVISION, SAHARANPUR | CONSTRUCTION DIVISION-3, PWD, SAHARANPUR |
| 651 | PRADHANMANTRI GRAM SADAK YOJNA, SAHARANPUR | SAHARANPUR | MD | CONSTRUCTION DIVISION, PWD, SAHARANPUR | PROVINCIAL DIVISION, PWD, SAHARANPUR |
| 652 | IRRIGATION CONSTRUCTION DIVISION, SAHARANPUR | SAHARANPUR | MD | IRRIGATION CONSTRUCTION DIVISION, SAHARANPUR | RURAL ENGINEERING DEPARTMENT DIVISION, SAHARANPUR |
| 653 | RURAL ENGINEERING DEPARTMENT DIVISION, SAHARANPUR | SAHARANPUR | MD | RURAL ENGINEERING DEPARTMENT DIVISION, SAHARANPUR | RURAL ENGINEERING DEPARTMENT DIVISION, SAHARANPUR |
| 654 | MINOR IRRIGATION DIVISION, SAHARANPUR | SAHARANPUR | MD | PRADHANMANTRI GRAM SADAK YOJNA, SAHARANPUR | IRRIGATION CONSTRUCTION DIVISION, SAHARANPUR |
| 655 | TUBE WELL DIVISION-1, SAHARANPUR | SAHARANPUR | LD | TUBE WELL DIVISION-1, SAHARANPUR | MECHANICAL DIVISION, PWD, SAHARANPUR |
| 656 | MECHANICAL DIVISION, PWD, SAHARANPUR | SAHARANPUR | LD | MECHANICAL DIVISION, PWD, SAHARANPUR | YAMUNA LINK CANAL CONSTRUCTION DIVISION, SAHARANPUR |
| 657 | YAMUNA LINK CANAL CONSTRUCTION DIVISION, SAHARANPUR | SAHARANPUR | LD | YAMUNA LINK CANAL CONSTRUCTION DIVISION, SAHARANPUR | MINOR IRRIGATION DIVISION, SAHARANPUR |
| 658 | PROVINCIAL DIVISION, PWD, SANT KABIR NAGAR | SAHARANPUR | VHD | MINOR IRRIGATION DIVISION, SAHARANPUR | TUBE WELL DIVISION-1, SAHARANPUR |
| 659 | DRAINAGE DIVISION-2, SANT KABIR NAGAR | SANT KABIR NAGAR | MD | DRAINAGE DIVISION-2, SANT KABIR NAGAR | RURAL ENGINEERING DEPARTMENT DIVISION, SANT KABIR NAGAR |
| 660 | RURAL ENGINEERING DEPARTMENT DIVISION, SANT KABIR NAGAR | SANT KABIR NAGAR | MD | RURAL ENGINEERING DEPARTMENT DIVISION, SANT KABIR NAGAR | RURAL ENGINEERING DEPARTMENT DIVISION, SANT KABIR NAGAR |
| 661 | SARYU NAHAR KHAND, KHALILABAD, SANT KABIR NAGAR | SANT KABIR NAGAR | MD | SARYU NAHAR KHAND, KHALILABAD, SANT KABIR NAGAR | DRAINAGE DIVISION-2, SANT KABIR NAGAR |
| 662 | PRADHANMANTRI GRAM SADAK YOJNA, SANT KABIR NAGAR | SANT KABIR NAGAR | MD | DRAINAGE DIVISION-2, SANT KABIR NAGAR | RURAL ENGINEERING DEPARTMENT DIVISION, SANT KABIR NAGAR |
| 663 | TUBE WELL DIVISION, SANT KABIR NAGAR | SANT KABIR NAGAR | LD | TUBE WELL DIVISION-2, SANT KABIR NAGAR | RURAL ENGINEERING DEPARTMENT DIVISION, SANT KABIR NAGAR |
| 664 | PROVINCIAL DIVISION, PWD, SHAHJAHANPUR | SHAHJAHANPUR | VHD | PRADHANMANTRI GRAM SADAK YOJNA, SANT KABIR NAGAR | SARYU NAHAR KHAND, KHALILABAD, SANT KABIR NAGAR |
| 665 | CONSTRUCTION DIVISION-1, PWD, SHAHJAHANPUR | SHAHJAHANPUR | VHD | CONSTRUCTION DIVISION-1, PWD, SHAHJAHANPUR | PRADHANMANTRI GRAM SADAK YOJNA, SHAHJAHANPUR |

| | | | | | |
|-----|--|-----------------|-----|--|--|
| 666 | PRADHANMANTRI GRAM SADAK YOJNA, SHAHLAHANPUR | SHAHLAHANPUR | HD | PROVINCIAL DIVISION, PWD, SHAHLAHANPUR | CONSTRUCTION DIVISION-1, PWD, SHAHLAHANPUR |
| 667 | SHARDA CANAL DIVISION, SHAHLAHANPUR | SHAHLAHANPUR | MD | MINOR IRRIGATION DIVISION, SHAHLAHANPUR | PRADHANMANTRI GRAM SADAK YOJNA, SHAHLAHANPUR |
| 668 | MINOR IRRIGATION DIVISION, SHAHLAHANPUR | SHAHLAHANPUR | MD | SHARDA CANAL DIVISION, SHAHLAHANPUR | PRADHANMANTRI GRAM SADAK YOJNA, SHAHLAHANPUR |
| 669 | RURAL ENGINEERING DEPARTMENT DIVISION, SHAHLAHANPUR | SHAHLAHANPUR | LD | TUBEWELL DIVISION, SHAHLAHANPUR | NMWP SHARDA CANAL DIVISION, SHAHLAHANPUR |
| 670 | TUBEWELL DIVISION, SHAHLAHANPUR | SHAHLAHANPUR | LD | NMWP SHARDA CANAL DIVISION, SHAHLAHANPUR | RURAL ENGINEERING DEPARTMENT DIVISION, SHAHLAHANPUR |
| 671 | NMWP SHARDA CANAL DIVISION, SHAHLAHANPUR | SHAHLAHANPUR | LD | RURAL ENGINEERING DEPARTMENT DIVISION, SHAHLAHANPUR | TUBEWELL DIVISION, SHAHLAHANPUR |
| 672 | PROVINCIAL DIVISION, PWD, SHAMBHAL | SHAMBHAL | VHD | MGCC DIVISION-16, CHANDAUZI, SAMBHAL | MGCC-9, SAMBHAL |
| 673 | MGCC DIVISION-16, CHANDAUZI, SAMBHAL | SHAMBHAL | HD | MGCC-9, SAMBHAL | RURAL ENGINEERING DEPARTMENT DIVISION, SHAMBHAL |
| 674 | MGCC-9, SAMBHAL | SHAMBHAL | HD | RURAL ENGINEERING DEPARTMENT DIVISION, SHAMBHAL | MGCC DIVISION-16, CHANDAUZI, SAMBHAL |
| 675 | RURAL ENGINEERING DEPARTMENT DIVISION, SHAMBHAL | SHAMBHAL | HD | MGCC DIVISION-16, CHANDAUZI, SAMBHAL | MGCC-9, SAMBHAL |
| 676 | TUBE WELL DIVISION, CHANDAUZI, SAMBHAL | SHAMBHAL | LD | MINOR IRRIGATION DIVISION, SHAMBHAL | MGCC DIVISION-16, CHANDAUZI, SAMBHAL |
| 677 | MINOR IRRIGATION DIVISION, SHAMBHAL | SHAMBHAL | LD | TUBE WELL DIVISION, CHANDAUZI, SAMBHAL | MGCC-9, SAMBHAL |
| 678 | PROVINCIAL DIVISION, PWD, SHAMLI | SHAMLI | HD | RURAL ENGINEERING DEPARTMENT DIVISION, SHAMLI | LOWER DIVISION, EASTERN YAMUNA CANAL, SHAMLI |
| 679 | RURAL ENGINEERING DEPARTMENT DIVISION, SHAMLI | SHAMLI | HD | PROVINCIAL DIVISION, PWD, SHAMLI | LOWER DIVISION, EASTERN YAMUNA CANAL, SHAMLI |
| 680 | LOWER DIVISION, EASTERN YAMUNA CANAL, SHAMLI | SHAMLI | MD | PROVINCIAL DIVISION, PWD, SHAMLI | LOWER DIVISION, EASTERN YAMUNA CANAL, SHAMLI |
| 681 | TUBE WELL DIVISION, SHAMLI | SHAMLI | LD | MINOR IRRIGATION DIVISION, SHAMLI | LOWER DIVISION, EASTERN YAMUNA CANAL, SHAMLI |
| 682 | MINOR IRRIGATION DIVISION, SHAMLI | SHAMLI | LD | TUBE WELL DIVISION, SHAMLI | LOWER DIVISION, EASTERN YAMUNA CANAL, SHAMLI |
| 683 | PROVINCIAL DIVISION, PWD, SHRAVASTI | SHRAVASTI | VHD | FLOOD DIVISION, SHRAVASTI | S.N.K.-6, SHRAVASTI |
| 684 | FLOOD DIVISION, SHRAVASTI | SHRAVASTI | MD | S.N.K.-6, SHRAVASTI | PRADHANMANTRI GRAM SADAK YOJNA, SHRAVASTI |
| 685 | S.N.K.-4, SHRAVASTI | SHRAVASTI | MD | PRADHANMANTRI GRAM SADAK YOJNA, SHRAVASTI | FLOOD DIVISION, SHRAVASTI |
| 686 | PRADHANMANTRI GRAM SADAK YOJNA, SHRAVASTI | SHRAVASTI | MD | FLOOD DIVISION, SHRAVASTI | S.N.K.-6, SHRAVASTI |
| 687 | RURAL ENGINEERING DEPARTMENT DIVISION, SHRAVASTI | SHRAVASTI | LD | CDD (Indo Nepal Border), PWD, Shrawasti | FLOOD DIVISION, SHRAVASTI |
| 688 | CDD (Indo Nepal Border), PWD, Shrawasti | SHRAVASTI | LD | RURAL ENGINEERING DEPARTMENT DIVISION, SHRAVASTI | S.N.K.-6, SHRAVASTI |
| 689 | CONSTRUCTION DIVISION, PWD, BANSI, SIDDHARTHANAGAR | SIDDHARTHANAGAR | VHD | PROVINCIAL DIVISION, PWD, SIDDHARTHANAGAR | S.N.K., BANSI, SIDDHARTHANAGAR |
| 690 | PROVINCIAL DIVISION, PWD, SIDDHARTHANAGAR | SIDDHARTHANAGAR | VHD | S.N.K., BANSI, SIDDHARTHANAGAR | CONSTRUCTION DIVISION-1, PWD, SIDDHARTHANAGAR |
| 691 | S.N.K., BANSI, SIDDHARTHANAGAR | SIDDHARTHANAGAR | VHD | CONSTRUCTION DIVISION-1, PWD, SIDDHARTHANAGAR | CONSTRUCTION DIVISION, PWD, BANSI, SIDDHARTHANAGAR |
| 692 | CONSTRUCTION DIVISION-1, PWD, SIDDHARTHANAGAR | SIDDHARTHANAGAR | VHD | CONSTRUCTION DIVISION, PWD, BANSI, SIDDHARTHANAGAR | PROVINCIAL DIVISION, PWD, SIDDHARTHANAGAR |
| 693 | Rajul Nahar, CD-3, Shohraiganj, Siddharthnagar | SIDDHARTHANAGAR | HD | C D-2 (Indo Nepal Border), PWD, Siddharthnagar | RURAL ENGINEERING DEPARTMENT DIVISION, SIDDHARTHANAGAR |
| 694 | C D-2 (Indo Nepal Border), PWD, Siddharthnagar | SIDDHARTHANAGAR | HD | RURAL ENGINEERING DEPARTMENT DIVISION, SIDDHARTHANAGAR | Rajul Nahar, CD-2, Shohraiganj, Siddharthnagar |
| 695 | RURAL ENGINEERING DEPARTMENT DIVISION, SIDDHARTHANAGAR | SIDDHARTHANAGAR | HD | Rajul Nahar, CD-2, Shohraiganj, Siddharthnagar | C D-2 (Indo Nepal Border), PWD, Siddharthnagar |
| 696 | Rajul Nahar, CD-2, Shohraiganj, Siddharthnagar | SIDDHARTHANAGAR | HD | Rajul Nahar, CD-1, Shohraiganj, Siddharthnagar | S.N.K. DIVISION-1, BANSI, SIDDHARTHANAGAR |
| 697 | SARVU DRAINAGE DIVISION-2, SIDDHARTHANAGAR | SIDDHARTHANAGAR | MD | IRRIGATION CONSTRUCTION DIVISION, SIDDHARTHANAGAR | DRAINAGE DIVISION, SIDDHARTHANAGAR |
| 698 | IRRIGATION CONSTRUCTION DIVISION, SIDDHARTHANAGAR | SIDDHARTHANAGAR | MD | S.N.K. DIVISION-1, BANSI, SIDDHARTHANAGAR | DRAINAGE DIVISION, SIDDHARTHANAGAR |
| 699 | S.N.K. DIVISION-1, BANSI, SIDDHARTHANAGAR | SIDDHARTHANAGAR | MD | DRAINAGE DIVISION, SIDDHARTHANAGAR | Rajul Nahar, CD-3, Shohraiganj, Siddharthnagar |
| 700 | DRAINAGE DIVISION, SIDDHARTHANAGAR | SIDDHARTHANAGAR | MD | Rajul Nahar, CD-3, Shohraiganj, Siddharthnagar | SARVU DRAINAGE DIVISION-2, SIDDHARTHANAGAR |
| 701 | Rajul Nahar, CD-3, Shohraiganj, Siddharthnagar | SIDDHARTHANAGAR | MD | SARVU DRAINAGE DIVISION-2, SIDDHARTHANAGAR | IRRIGATION CONSTRUCTION DIVISION, SIDDHARTHANAGAR |
| 702 | TUBEWELL DIVISION, SIDDHARTHANAGAR | SIDDHARTHANAGAR | LD | NATIONAL HIGHWAY DIVISION, SIDDHARTHANAGAR | SARVU DRAINAGE DIVISION-2, SIDDHARTHANAGAR |
| 703 | NATIONAL HIGHWAY DIVISION, SIDDHARTHANAGAR | SIDDHARTHANAGAR | LD | TUBEWELL DIVISION, SIDDHARTHANAGAR | IRRIGATION CONSTRUCTION DIVISION, SIDDHARTHANAGAR |
| 704 | PROVINCIAL DIVISION, PWD, SITAPUR | SITAPUR | VHD | CONSTRUCTION DIVISION, PWD, SITAPUR | CONSTRUCTION DIVISION-1, PWD, SITAPUR |
| 705 | CONSTRUCTION DIVISION, PWD, SITAPUR | SITAPUR | HD | CONSTRUCTION DIVISION-1, PWD, SITAPUR | CONSTRUCTION DIVISION-4, PWD, SITAPUR |
| 706 | CONSTRUCTION DIVISION-1, PWD, SITAPUR | SITAPUR | HD | CONSTRUCTION DIVISION-4, PWD, SITAPUR | SHARDA CANAL DIVISION, SITAPUR |
| 707 | CONSTRUCTION DIVISION-4, PWD, SITAPUR | SITAPUR | HD | SHARDA CANAL DIVISION, SITAPUR | RURAL ENGINEERING DEPARTMENT DIVISION, SITAPUR |
| 708 | SHARDA CANAL DIVISION, SITAPUR | SITAPUR | HD | RURAL ENGINEERING DEPARTMENT DIVISION, SITAPUR | MINOR IRRIGATION DIVISION, SITAPUR |
| 709 | RURAL ENGINEERING DEPARTMENT DIVISION, SITAPUR | SITAPUR | HD | MINOR IRRIGATION DIVISION, SITAPUR | PRADHANMANTRI GRAM SADAK YOJNA, SITAPUR |
| 710 | MINOR IRRIGATION DIVISION, SITAPUR | SITAPUR | HD | PRADHANMANTRI GRAM SADAK YOJNA, SITAPUR | CONSTRUCTION DIVISION, PWD, SITAPUR |
| 711 | PRADHANMANTRI GRAM SADAK YOJNA, SITAPUR | SITAPUR | HD | CONSTRUCTION DIVISION, PWD, SITAPUR | CONSTRUCTION DIVISION-1, PWD, SITAPUR |
| 712 | IRRIGATION DIVISION-1, SITAPUR | SITAPUR | LD | TUBEWELL DIVISION-1, SITAPUR | TUBEWELL DIVISION-2, SITAPUR |
| 713 | TUBEWELL DIVISION-1, SITAPUR | SITAPUR | LD | TUBEWELL DIVISION-2, SITAPUR | NATIONAL HIGHWAY DIVISION, SITAPUR |
| 714 | TUBEWELL DIVISION-2, SITAPUR | SITAPUR | LD | NATIONAL HIGHWAY DIVISION, SITAPUR | IRRIGATION DIVISION, SITAPUR |
| 715 | NATIONAL HIGHWAY DIVISION, SITAPUR | SITAPUR | LD | IRRIGATION DIVISION, SITAPUR | TUBEWELL DIVISION-1, SITAPUR |
| 716 | CONSTRUCTION DIVISION, SONBHADRA | SONBHADRA | VHD | PROVINCIAL DIVISION, PWD, ROBERTSGANJ, SONBHADRA | PRADHANMANTRI GRAM SADAK YOJNA, SONBHADRA |
| 717 | PROVINCIAL DIVISION, PWD, ROBERTSGANJ, SONBHADRA | SONBHADRA | VHD | CONSTRUCTION DIVISION, SONBHADRA | CONSTRUCTION DIVISION-2, PWD, SONBHADRA |
| 718 | PRADHANMANTRI GRAM SADAK YOJNA, SONBHADRA | SONBHADRA | HD | CONSTRUCTION DIVISION-2, PWD, SONBHADRA | KANHAR CONSTRUCTION DIVISION-3, PIPRI, SONBHADRA |
| 719 | CONSTRUCTION DIVISION-2, PWD, SONBHADRA | SONBHADRA | HD | KANHAR CONSTRUCTION DIVISION-3, PIPRI, SONBHADRA | OBRA DAM DIVISION, SONBHADRA |

| | | | | | |
|-----|--|-----------|-----|--|--|
| 720 | KANHAR CONSTRUCTION DIVISION-3, PIPRI, SONBHADRA | SONBHADRA | HD | OBRA DAM DIVISION, SONBHADRA | RURAL ENGINEERING DEPARTMENT DIVISION, SONBHADRA |
| 721 | OBRA DAM DIVISION, SONBHADRA | SONBHADRA | HD | RURAL ENGINEERING DEPARTMENT DIVISION, SONBHADRA | PRADHANMANTRI GRAM SADAK YOJNA, SONBHADRA |
| 722 | RURAL ENGINEERING DEPARTMENT DIVISION, SONBHADRA | SONBHADRA | HD | PRADHANMANTRI GRAM SADAK YOJNA, SONBHADRA | CONSTRUCTION DIVISION-2, PWD, SONBHADRA |
| 723 | RIHAND DAM CONSTRUCTION DIVISION, PIPRI, SONBHADRA | SONBHADRA | MD | Kanhar Canal Project -5, Dudhi, Sonbhadra | KANHAR CONSTRUCTION DIVISION-2, PIPRI, SONBHADRA |
| 724 | Kanhar Canal Project -5, Dudhi, Sonbhadra | SONBHADRA | MD | KANHAR CONSTRUCTION DIVISION-2, PIPRI, SONBHADRA | MINOR IRRIGATION DIVISION, SONBHADRA |
| 725 | KANHAR CONSTRUCTION DIVISION-2, PIPRI, SONBHADRA | SONBHADRA | MD | MINOR IRRIGATION DIVISION, SONBHADRA | RIHAND DAM CONSTRUCTION DIVISION, PIPRI, SONBHADRA |
| 726 | MINOR IRRIGATION DIVISION, SONBHADRA | SONBHADRA | MD | RIHAND DAM CONSTRUCTION DIVISION, PIPRI, SONBHADRA | Kanhar Canal Project -5, Dudhi, Sonbhadra |
| 727 | Kanhar Canal Project -4, Dudhi, Sonbhadra | SONBHADRA | CD | KANHAR CONSTRUCTION DIVISION-1, PIPRI, SONBHADRA | IRRIGATION CONSTRUCTION DIVISION, ROBERTSGANJ, SONBHADRA |
| 728 | KANHAR CONSTRUCTION DIVISION-1, PIPRI, SONBHADRA | SONBHADRA | LD | IRRIGATION CONSTRUCTION DIVISION, ROBERTSGANJ, SONBHADRA | BANDHI DIV 2 ROBERTSGANJ SONBHADRA |
| 729 | IRRIGATION CONSTRUCTION DIVISION, ROBERTSGANJ, SONBHADRA | SONBHADRA | LD | BANDHI DIV 2 ROBERTSGANJ SONBHADRA | Kanhar Canal Project-4, Dudhi, Sonbhadra |
| 730 | BANDHI DIV 2 ROBERTSGANJ SONBHADRA | SONBHADRA | LD | Kanhar Canal Project-4, Dudhi, Sonbhadra | KANHAR CONSTRUCTION DIVISION-1, PIPRI, SONBHADRA |
| 731 | CONSTRUCTION DIVISION-3, PWD, SULTANPUR | SULTANPUR | VHD | NATIONAL HIGHWAY DIVISION, SULTANPUR | PROVINCIAL DIVISION, PWD, SULTANPUR |
| 732 | NATIONAL HIGHWAY DIVISION, SULTANPUR | SULTANPUR | VHD | PROVINCIAL DIVISION, PWD, SULTANPUR | CONSTRUCTION DIVISION-3, PWD, SULTANPUR |
| 733 | PROVINCIAL DIVISION, PWD, SULTANPUR | SULTANPUR | VHD | CONSTRUCTION DIVISION-3, PWD, SULTANPUR | NATIONAL HIGHWAY DIVISION, SULTANPUR |
| 734 | RURAL ENGINEERING DEPARTMENT DIVISION, SULTANPUR | SULTANPUR | MD | PRADHANMANTRI GRAM SADAK YOJNA, SULTANPUR | CONSTRUCTION DIVISION-3, PWD, SULTANPUR |
| 735 | PRADHANMANTRI GRAM SADAK YOJNA, SULTANPUR | SULTANPUR | MD | RURAL ENGINEERING DEPARTMENT DIVISION, SULTANPUR | NATIONAL HIGHWAY DIVISION, SULTANPUR |
| 736 | MINOR IRRIGATION DIVISION, SULTANPUR | SULTANPUR | LD | S S K-16, SULTANPUR | IRRIGATION DIVISION II, SULTANPUR |
| 737 | S S K-16, SULTANPUR | SULTANPUR | LD | IRRIGATION DIVISION II, SULTANPUR | TUBE WELL DIVISION, SULTANPUR |
| 738 | IRRIGATION DIVISION II, SULTANPUR | SULTANPUR | LD | TUBE WELL DIVISION, SULTANPUR | IRRIGATION DIVISION, SULTANPUR |
| 739 | TUBE WELL DIVISION, SULTANPUR | SULTANPUR | LD | IRRIGATION DIVISION, SULTANPUR | S S K-49, SULTANPUR |
| 740 | IRRIGATION DIVISION, SULTANPUR | SULTANPUR | LD | S S K-49, SULTANPUR | MINOR IRRIGATION DIVISION, SULTANPUR |
| 741 | S S K-49, SULTANPUR | SULTANPUR | LD | MINOR IRRIGATION DIVISION, SULTANPUR | S S K-16, SULTANPUR |
| 742 | PROVINCIAL DIVISION, PWD, UNNAO | UNNAO | VHD | CONSTRUCTION DIVISION-1, PWD, UNNAO | RURAL ENGINEERING DEPARTMENT DIVISION, UNNAO |
| 743 | CONSTRUCTION DIVISION-1, PWD, UNNAO | UNNAO | HD | RURAL ENGINEERING DEPARTMENT DIVISION, UNNAO | PROVINCIAL DIVISION, PWD, UNNAO |
| 744 | RURAL ENGINEERING DEPARTMENT DIVISION, UNNAO | UNNAO | HD | CONSTRUCTION DIVISION-1, PWD, UNNAO | PROVINCIAL DIVISION, PWD, UNNAO |
| 745 | IRRIGATION DIVISION, UNNAO | UNNAO | MD | RURAL ENGINEERING DEPARTMENT DIVISION, UNNAO | CONSTRUCTION DIVISION-1, PWD, UNNAO |
| 746 | SARDA CANAL DIVISION, UNNAO | UNNAO | LD | IRRIGATION DIVISION-2, PWD, UNNAO | TUBE WELL DIVISION, UNNAO |
| 747 | IRRIGATION DIVISION-2, PWD, UNNAO | UNNAO | LD | TUBE WELL DIVISION, UNNAO | SARDA CANAL DIVISION, UNNAO |
| 748 | TUBE WELL DIVISION, UNNAO | UNNAO | LD | SARDA CANAL DIVISION, UNNAO | IRRIGATION DIVISION-2, PWD, UNNAO |
| 749 | PROVINCIAL DIVISION, PWD, VARANASI | VARANASI | VHD | CONSTRUCTION DIVISION-3, PWD, VARANASI | CONSTRUCTION DIVISION-2 (BUILDING), PWD, VARANASI |
| 750 | CONSTRUCTION DIVISION-3, PWD, VARANASI | VARANASI | VHD | CONSTRUCTION DIVISION-3, PWD, VARANASI | CONSTRUCTION DIVISION-1, PWD, VARANASI |
| 751 | CONSTRUCTION DIVISION-2 (BUILDING), PWD, VARANASI | VARANASI | VHD | CONSTRUCTION DIVISION-1, PWD, VARANASI | BARRAGE MECHANICAL MAINTENANCE DIVISION, VARANASI |
| 752 | CONSTRUCTION DIVISION-1, PWD, VARANASI | VARANASI | HD | BARRAGE MECHANICAL MAINTENANCE DIVISION, VARANASI | SON MECHANICAL CONSTRUCTION DIVISION, VARANASI |
| 753 | BARRAGE MECHANICAL MAINTENANCE DIVISION, VARANASI | VARANASI | HD | SON MECHANICAL CONSTRUCTION DIVISION, VARANASI | RURAL ENGINEERING DEPARTMENT DIVISION, VARANASI |
| 754 | SON MECHANICAL CONSTRUCTION DIVISION, VARANASI | VARANASI | HD | RURAL ENGINEERING DEPARTMENT DIVISION, VARANASI | IRRIGATION CONSTRUCTION DIVISION, VARANASI |
| 755 | RURAL ENGINEERING DEPARTMENT DIVISION, VARANASI | VARANASI | HD | IRRIGATION CONSTRUCTION DIVISION, VARANASI | CONSTRUCTION DIVISION-2 (BUILDING), PWD, VARANASI |
| 756 | IRRIGATION CONSTRUCTION DIVISION, VARANASI | VARANASI | HD | CONSTRUCTION DIVISION-2 (BUILDING), PWD, VARANASI | CONSTRUCTION DIVISION-1, PWD, VARANASI |
| 757 | NATIONAL HIGHWAY DIVISION-1, VARANASI | VARANASI | MD | BANDHI DIVISION, VARANASI | LIFT IRRIGATION CONSTRUCTION DIVISION, VARANASI |
| 758 | NATIONAL HIGHWAY DIVISION-1, VARANASI | VARANASI | MD | BANDHI DIVISION, VARANASI | MOOSA KHAND DAM DIVISION, VARANASI |
| 759 | LIFT IRRIGATION CONSTRUCTION DIVISION, VARANASI | VARANASI | MD | LIFT IRRIGATION CONSTRUCTION DIVISION, VARANASI | MINOR IRRIGATION DIVISION, VARANASI |
| 760 | MOOSA KHAND DAM DIVISION, VARANASI | VARANASI | MD | MINOR IRRIGATION DIVISION, VARANASI | TY. E&M DIVISION, VARANASI |
| 761 | MINOR IRRIGATION DIVISION, VARANASI | VARANASI | MD | TY. E&M DIVISION, VARANASI | NATIONAL HIGHWAY DIVISION-1, VARANASI |
| 762 | TY. E&M DIVISION, VARANASI | VARANASI | MD | NATIONAL HIGHWAY DIVISION-1, VARANASI | BANDHI DIVISION, VARANASI |
| 763 | PRADHANMANTRI GRAM SADAK YOJNA, VARANASI | VARANASI | LD | MINOR LIFT CANAL DIVISION, VARANASI | TUBE WELL CONSTRUCTION DIVISION, VARANASI |
| 764 | MINOR LIFT CANAL DIVISION, VARANASI | VARANASI | LD | TUBE WELL CONSTRUCTION DIVISION, VARANASI | TUBE WELL DIVISION-1, VARANASI |
| 765 | TUBE WELL CONSTRUCTION DIVISION, VARANASI | VARANASI | LD | TUBE WELL CONSTRUCTION DIVISION, VARANASI | I&P (WR) DIVISION, VARANASI |
| 766 | TUBE WELL CONSTRUCTION DIVISION, VARANASI | VARANASI | LD | I&P (WR) DIVISION, VARANASI | I&P DIVISION, VARANASI |
| 767 | I&P (WR) DIVISION, VARANASI | VARANASI | LD | I&P (WR) DIVISION, VARANASI | PRADHANMANTRI GRAM SADAK YOJNA, VARANASI |
| 768 | I&P DIVISION, VARANASI | VARANASI | LD | PRADHANMANTRI GRAM SADAK YOJNA, VARANASI | MINOR LIFT CANAL DIVISION, VARANASI |
| 769 | GROUNDWATER DEPARTMENT DIVISION, VARANASI | VARANASI | LD | MINOR LIFT CANAL DIVISION, VARANASI | TUBE WELL CONSTRUCTION DIVISION, VARANASI |


 Senior Accounts Officer (WIM-I)