

APPENDICES

Appendix 1.1
(Referred to in paragraph 1.7)
Statement showing details of outstanding Inspection Reports and paragraphs

S. No.	Name of Department	No of IRs Outstanding as on 31 March 2016	No of Outstanding Paragraphs	Total Amount involved	Year from Which paragraphs are outstanding	No of IRs outstanding more than five year at the end of March 2016	No. of para outstanding more than five year at the end of March 2016
1	2	3	4	5	6	7	8
1	Housing and Urban Planning	117	1008	34184.52	2008-09	60	421
2	Infrastructure and Industrial Development	2	7	8.08	2013-14	0	0
3	Department of Micro, Small and Medium Enterprises and Export Promotion	128	341	318.12	2007-08	60	132
4	Information Technology and Electronics	1	4	2.21	2014-15	0	0
5	Forest	662	2056	2454.08	2007-08	411	1115
6	Energy	28	78	4086.70	2008-09	4	6
7	Co-operative	51	123	2018.32	2007-08	12	17
8	Cane Development	70	193	14892.05	2008-09	26	58
9	Tourism	15	59	532.34	2007-08	6	17
10	Environment	7	28	1149.30	2008-09	3	15
11	Khadi and Village Industries	12	59	2955.32	2008-09	5	26
12	Handloom and Textile Industries	29	81	234.86	2008-09	11	30
13	Dairy Development	127	440	852.07	2008-09	47	139
14	Science and Technology	9	74	251.21	2008-09	3	15
15	Civil Aviation	3	9	42.29	2013-14	0	0
16	Madhya Nishedh	6	8	13.09	2008-09	1	1
17	Revenue(Except Collectorate)	23	58	721.34	2007-08	13	30
18	Additional Sources of Energy/Non conventional Energy	5	41	73.63	2008-09	2	19
	Total	1295	4667	64789.53		664	2041

Appendix 1.2

(Referred to in paragraph 1.11)

Statement showing details of outstanding Separate Audit Report to be presented in State Assembly

S.No.	Name of Autonomous Bodies	Year upto which SAR placed in Legislature	Year for which SAR not placed in Legislature		Reasons for not-placing of SAR
			Years of SAR	Date of Issue to Government	
1	2	3	4	5	6
1	Uttar Pradesh Electricity Regulatory Commission (UPERC).	No SAR placed in legislature since established (2003-04)	2003-04 2004-05 2005-06 2006-07 2007-08 2008-09 2009-10 2010-11 2011-12 2012-13 2013-14 2014-15	19 October 2006 5 October 2007 5 October 2007 3 October 2008 17 August 2009 15 August 2010 26 May 2011 08 June 2012 24 September 2014 20 February 2015 22 June 2015 28 December 2015	Reasons not furnished.

Appendix 2.1
(Referred to in Paragraph No. 2.1.1)
Role of the Board as per Water Act, Air Act and EP Act

to plan a comprehensive programme for the prevention, control or abatement of steam and well and air pollution in the State and to secure the execution thereof.

to advise the State Government on any matter concerning the prevention, control or abatement of water.

to collect and disseminate information relating to water and air pollution and the prevention, control or abatement thereof;

to inspect sewage or trade effluents, works and plants for the treatment of sewage and trade effluents and the system for the disposal of sewage or trade effluents or in connection with the grant of any consent as required by the Acts;

to assess and collect the Water Cess, under provision of Water Cess Act and to remit it to the Central Government;

to encourage, conduct and participate in investigations and research relating to problems of environment pollution and prevention, control or abatement of water and air pollution;

to collaborate with the Central Board in organising the training of persons engaged or to be engaged in programmes relating to prevention, control or abatement of water and air pollution and to organise mass education programmes relating thereto;

lay down, modify or annul effluent standards to be complied with and monitoring of air and water pollution in the State;

issue of authorisation under the various Waste Management Rules for hazardous waste, e-waste, bio-medical waste, etc.;

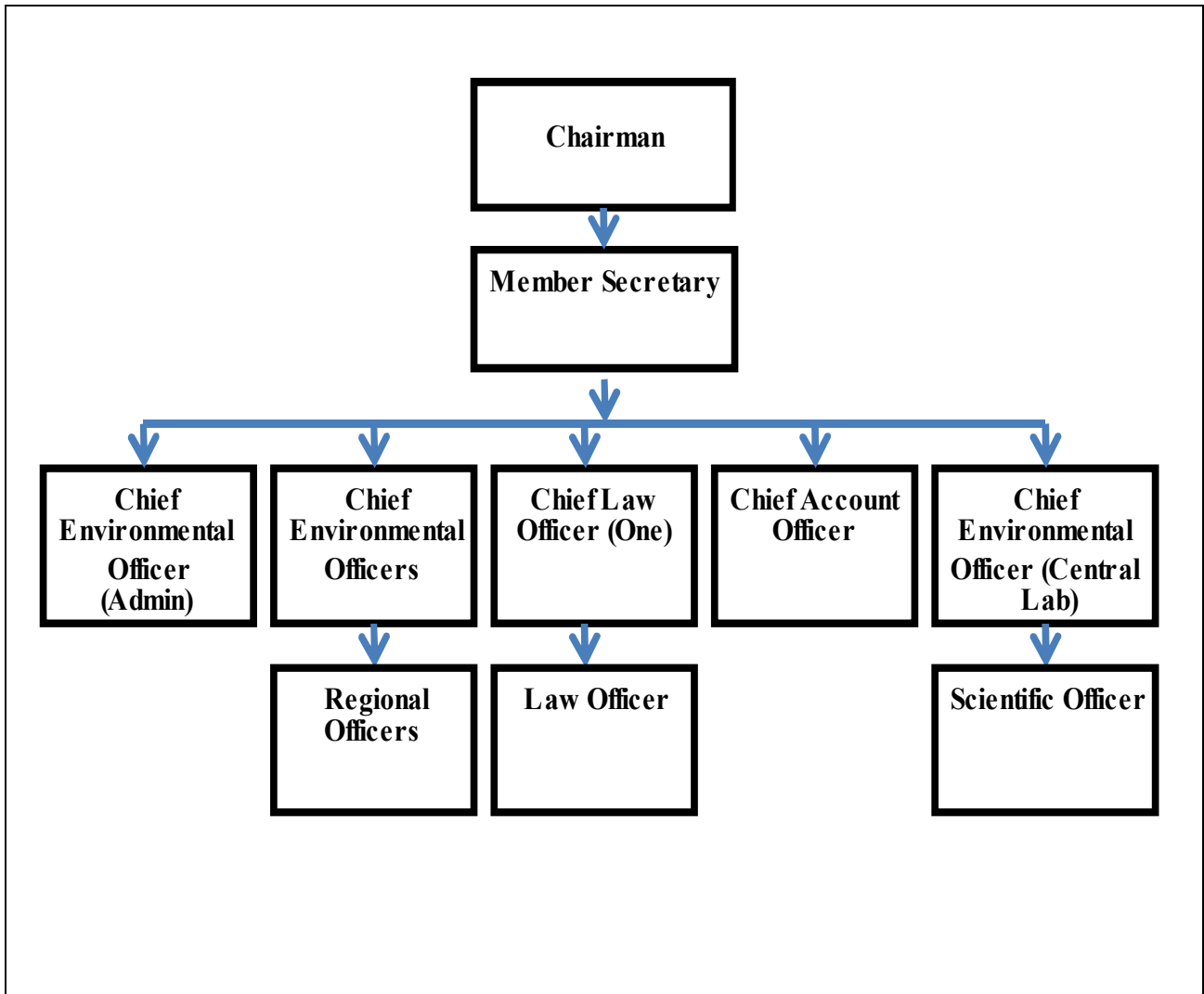
to impose penalties and institute legal action against defaulters; and

to perform such other functions as may be prescribed or as may, from time to time be entrusted to it by the Central Board or the State Government.

As per the Acts, the Board may establish or recognise a laboratory or laboratories to enable the Board to perform its functions efficiently, including the analysis of samples of water from any stream or well or of samples of any sewage or trade effluents.

(Source: Water Act, Air Act, EP Act and Rules framed under EP Act.)

Appendix 2.2
(Referred to in Paragraph No. 2.1.2)
Organisational Chart of UPPCB



(Source: Information provided by UPPCB)

Appendix 2.3

(Referred to in Paragraph No. 2.1.7.3)

Statement showing details of testing facilities available in the Board's Central laboratory

S. No.	Category of tests	No. of mandatory test parameters to be tested	No. of mandatory test parameters for which facilities were available in the Laboratory during the years 2011-12 to 2015-16
WATER/SOLIDS/SOIL/SLUDGE ANALYSIS			
A	Physical tests	10	10
B	Inorganic tests		
	General & non-metallic	13	13
	Trace Metals	15	15
C	Organic tests (general and trace organics)	5	5
D	Micro-biological tests	4	4
E	Toxicological tests	1	1
F	Biological tests	3	3
G	Characterisation of Hazardous waste	3	2
H	Soil/sludge/sediments and solid waste test	15	9
AIR ANALYSIS			
A	Ambient air/fugitive tests	4	4
B	Stack emission tests	8	8
C	Noise level tests	2	2
D	Meteorological tests	4	4
E	Vehicular emission tests	3	0

(Source: Guidelines of EP Act and Information provided by UPPCB)

Appendix 2.4
(Referred to in Paragraph No. 2.1.7.3)
Statement showing details of testing facilities available in the Board's Regional laboratory

S. No.	Category of tests	No. of mandatory test parameters to be tested	No. of mandatory test parameters for which facilities were available in the Regional Laboratory during the years 2011-12 to 2015-16				
			Kanpur Region	Ghaziabad Region	NOIDA Region	Aligarh Region	Bareilly Region
WATER/SOLIDS/SOIL/SLUDGE ANALYSIS							
A	Physical tests	10	10	10	10	10	10
B	Inorganic tests						
	General & non-metallic	13	13	10	10	10	10
	Trace Metals	15	6	4	3	6	6
C	Organic tests (general and trace organics)	5	3	3	3	3	3
D	Micro-biological tests	4	2	2	2	2	2
E	Toxicological tests	1	0	0	0	0	0
F	Biological tests	3	0	0	0	3	3
G	Characterisation of Hazardous waste	3	0	0	0	0	0
H	Soil/sludge/sediments and solid waste test	15	3	3	0	0	0
AIR ANALYSIS							
A	Ambient air/fugitive tests	4	4	4	4	4	4
B	Stack emission tests	8	8	8	8	8	8
C	Noise level tests	2	2	2	2	2	2
D	Meteorological tests	4	4	0	0	0	0
E	Vehicular emission tests	3	0	0	0	0	0

(Source: Guidelines of EP Act and Information provided by UPPCB)

Appendix 2.5 (a)

(Referred to in Paragraph No. 2.1.7.3)

Statement showing list of vital infrastructure and other equipment/instruments missing at regional laboratories for accreditation

A. Infrastructure equipment missing at regional laboratories				
Noida	Ghaziabad	Kanpur	Aligarh	Bareilly
1	2	3	4	5
Breathing apparatus	Breathing apparatus	Breathing apparatus	Breathing apparatus	Breathing apparatus
Cold room for sample storage	Cold room for sample storage	Cold room for sample storage	Cold room for sample storage	Cold room for sample storage
Face shield and helmet	Face shield and helmet	Face shield and helmet	Face shield and helmet	Face shield and helmet
Tool Kit (Electrical & Mechanical)	Tool Kit (Electrical & Mechanical)	Tool Kit (Electrical & Mechanical)	Tool Kit (Electrical & Mechanical)	Tool Kit (Electrical & Mechanical)
Fume Hood	Fume Hood	Fume Hood	Fume Hood	Fume Hood
Exhaust system	Exhaust system	Exhaust system	Exhaust system	Exhaust system
Gas Cylinder Trolleys	Gas Cylinder Trolleys	Gas Cylinder Trolleys	Gas Cylinder Trolleys	Gas Cylinder Trolleys
B. Other equipment/instruments missing at regional laboratories				
COD Digester with aluminium heating blocks	COD Digester with aluminium heating blocks	COD Digester with aluminium heating blocks	COD Digester with aluminium heating blocks	COD Digester with aluminium heating blocks
Flocculator	Flocculator	Flocculator	Flocculator	Flocculator
TKN Analyser semi automatic with aluminium block digester	Magnetic stirrer with hot plate	Noise meter	Noise meter	
Ekman Dredge	TKN Analyser semi automatic with aluminium block digester	Magnetic stirrer with hot plate	Magnetic stirrer with hot plate	Magnetic stirrer with hot plate
Chloroscope for residual chlorine	Ultrasonic water bath	TKN Analyser semi automatic with aluminium block digester	TKN Analyser semi automatic with aluminium block digester	TKN Analyser semi automatic with aluminium block digester
Alpha/Beta Radioactivity Counter	Ekman Dredge	Ekman Dredge	Ultrasonic water bath	Ultrasonic water bath
Atomic Absorption Spectrometer	Chloroscope for residual chlorine	Chloroscope for residual chlorine	Ekman Dredge	Ekman Dredge
Gas Chromatograph	Alpha/Beta Radioactivity Counter	Alpha/Beta Radioactivity Counter	Chloroscope for residual chlorine	Chloroscope for residual chlorine
High Pressure Liquid Chromatograph	Atomic Absorption Spectrometer	Flame Photometer	Alpha/Beta Radioactivity Counter	Alpha/Beta Radioactivity Counter
Ion Chromatograph	Flame Photometer	High Pressure Liquid Chromatograph	Atomic Absorption Spectrometer	Atomic Absorption Spectrometer
Inductively Coupled Plasma Spectrometer	Gas Chromatograph	Ion Chromatograph	Flame Photometer	Flame Photometer

1	2	3	4	5
Mercury Analyser Digital	High Pressure Liquid Chromatograph	Inductively Coupled Plasma Spectrometer	Gas Chromatograph	Gas Chromatograph
UV-visible spectrophotometer	Ion Chromatograph	Mercury Analyser Digital	High Pressure Liquid Chromatograph	High Pressure Liquid Chromatograph
Alpha/Beta Radioactivity Counter	Inductively Coupled Plasma Spectrometer	UV-visible spectrophotometer	Ion Chromatograph	Ion Chromatograph
BTX analyser (PID/FID detector)	Mercury Analyser Digital	Alpha/Beta Radioactivity Counter	Inductively Coupled Plasma Spectrometer	Inductively Coupled Plasma Spectrometer
BTX calibrator	Spectrophotometer (visible) or Ultraviolet & visible	BTX analyser (PID/FID detector)	Mercury Analyser Digital	Mercury Analyser Digital
Dust analyser (Beta attenuation/TOEN)	UV-visible spectrophotometer	BTX calibrator	UV-visible spectrophotometer	UV-visible spectrophotometer
Exhaust CO/HC analyser	Alpha/Beta Radioactivity Counter	Dust analyser (Beta attenuation/TOEN)	Alpha/Beta Radioactivity Counter	Alpha/Beta Radioactivity Counter
Gas Chromatograph with Air sampling port, FID & PFPD detectors	BTX analyser (PID/FID detector)	Exhaust CO/HC analyser	BTX analyser (PID/FID detector)	BTX analyser (PID/FID detector)
Low flow pump	BTX calibrator	Flue gas analyser	BTX calibrator	BTX calibrator
Meteorological sensors with mast	Dust analyser (Beta attenuation/TOEN)	Gas Chromatograph with Air sampling port, FID & PFPD detectors	Dust analyser (Beta attenuation/TOEN)	Dust analyser (Beta attenuation/TOEN)
Multi channel recorder	Exhaust CO/HC analyser	Low flow pump	Exhaust CO/HC analyser	Exhaust CO/HC analyser
No-NO ₂ -Nox Analyser (Chemiluminescence based)	Flue gas analyser	Meteorological sensors with mast	Flue gas analyser	Flue gas analyser
Ozone analyser (ultraviolet)	Gas Chromatograph with Air sampling port, FID & PFPD detectors	Multi channel recorder	Gas Chromatograph with Air sampling port, FID & PFPD detectors	Gas Chromatograph with Air sampling port, FID & PFPD detectors
	Low flow pump	No-NO ₂ -Nox Analyser (Chemiluminescence based)	Low flow pump	Low flow pump
	Meteorological sensors with mast	Ozone analyser (ultraviolet)	Meteorological sensors with mast	Meteorological sensors with mast
	Multi channel recorder		Multi channel recorder	Multi channel recorder
	No-NO ₂ -Nox Analyser (Chemiluminescence based)		No-NO ₂ -Nox Analyser (Chemiluminescence based)	No-NO ₂ -Nox Analyser (Chemiluminescence based)
	Ozone analyser (ultraviolet)		Ozone analyser (ultraviolet)	Ozone analyser (ultraviolet)

(Source: Information provided by UPPCB)

Appendix 2.5 (b)**(Referred to in Paragraph No. 2.1.7.3)****Statement showing list of specific equipment required for hazardous waste analysis as per Appendix-D (b) of guidelines for recognition of environmental laboratories under the EP Act not available in regional laboratories**

S. No.	List of equipment/ instruments
1	Bomb colorimeter
2	Elemental analyser
3	Flash point apparatus
4	Moisture content meter
5	Rotary evaporator
6	Toxicity characteristic leaching procedure (TCLP) extractor
7	Toxic Gas analyser
8	X-ray fluorescence (XRF) Spectrometer
9	Zero head space extractor (ZHE)

(Source: Guidelines of the CPCB for recognition of environmental labs under EP Act)

Appendix 2.6
(Referred to in Paragraph No. 2.1.8.3)
Statement showing difference in Bank Balance as per Bank Statement/Pass Book
and Cash Book

(Figures in column 4,5 and 6 are ₹ in lakh)

S.No.	Name of Bank	Bank A/c No.	Balance as per Bank Statement/Pass Book	Balance as per Cash Book	Difference
1	2	3	4	5	6
1	Indian Overseas Bank Daliganj	024801000001567	1545.89	1384.24	161.65
2	Union Bank of India	302202010043730	24.85	13.77	11.08
3	Union Bank of India Chandganj	437202010003242	443.63	427.60	16.03
4	Allahabad Bank	20299626800	2.56	1.45	1.11
5	Bank of India	1002	2.65	0.21	2.44
6	State bank of Patiyala	10000151104	83.12	52.84	30.28
Total			2102.70	1880.11	222.59

(Source – Data provided by UPPCB)

Appendix 2.7
(Referred to in Paragraph No. 2.1.8.5)
Statement showing actual expenditure against budgeted Amount in respect of pollution control measures
(Figures in Budgeted and Actual column are ₹ in lakh)

S. No.	Head of Expenditure	Year														
		2011-12			2012-13			2013-14			2014-15			2015-16		
		Budgeted	Actual	Percentage	Budgeted	Actual	Percentage	Budgeted	Actual	Percentage	Budgeted	Actual	Percentage	Budgeted	Actual	Percentage
1	2	3	4	5	6	7	8	9	10	11	12	13	14	15	16	17
1	Pollution Control Measures	35	7.42	21	34	9.73	29	34.50	9.61	28	34.50	10.17	29	34.50	3	9
2	Laboratory expenses	80.35	56.75	71	88.7	70.05	79	115.60	80.15	69.33	128.40	108.11	84.20	124.15	80.18	65
3	Mass Awareness programmes	14.10	16.85	120	15.10	11.61	77	18	8.81	49	149	24.78	17	124.30	17.21	14
4	Laboratory equipment	113.80	112.54	99	168.20	89.41	53	751.50	138.62	18	1582	282.89	18	1455.50	279.65	19
5	Air Monitoring Stations	200	0	0	600	0	0	400	0	0	400	0	0	400	0	0
6	Air Monitoring	60	10.24	17	108	0	0	108	21.43	20	108	42.22	39	70	4.81	7
7	Sound Monitoring Stations	0	0	0	450	0	0	450	0	0	450	0	0	450	0	0

Audit Report (Economic Sector) for the year ended 31 March 2016

1	2	3	4	5	6	7	8	9	10	11	12	13	14	15	16	17
8	Water Monitoring Stations	0	0	0	0	0	0	0	0	0	630	0	0	630	0	0
9	Electronic Display Boards	22	14.21	65	22	0.06	0	16.50	0	0	0	0	0	0	0	0
10	Mobile Laboratories	0	0	0	52	0	0	52	0	0	0	0	0	0	0	0
11	Construction of Regional Labs	500	0	0	0	0	0	0	0	0	0	0	0	970	0	0
12	Solar Power Station	0	0	0	0	0	0	0	0	0	0	0	0	200	0	0
Total		1025.25	218.01	21	1538	180.86	12	1946.10	258.62	13.29	3481.90	468.17	13	4458.45	384.85	9

(Source: Information provided by UPPCB)

Appendix No. 2.8 (a)
(Referred to in Paragraph No. 2.1.9.1)
Statement showing core quality parameters of water

S. No.	Pollutant	Impact
1	2	3
1	Dissolved Oxygen (DO)	Oxygen is introduced into water from the surrounding atmospheric air through aeration and as a product of photosynthesis by aquatic vegetation. DO is requirement for the metabolism and survival of aquatic, aerobic organisms and other species. More DO means better water.
2	Bio-chemical Oxygen Demand (BOD)	The BOD in the water ensures reasonable freedom from oxygen demanding pollutants and prevents production of obnoxious gases. More BOD means worse water.
3	pH	The pH is a numerical measure of the acidity or alkalinity. The normal range (6.6 to 8.5) of pH provides protection of the skin and delicate organs during outdoor bathing.
4	Temperature	Temperature affects the solubility and aquatic system. The solubility of oxygen (DO levels) decreases as temperature increases.
5	Conductivity	Significant increase in conductivity is an indicator that polluting discharges have entered the water.
6	Nitrate	Nitrate is toxic chemical and affects aquatic life and water quality.
7	Nitrite	Nitrite is more toxic than nitrate and affects aquatic life and water quality.
8	Faecal coliform	Faecal coliform is most common bacteria/microbiological contaminants of natural waters which are found in animals/humans excreta. This is a measure for suitability of drinking water which causes diseases.
9	Total coliform	Total coliform includes bacteria that are found in the soil, in water that has been influenced by surface water, and in human or animal waste.

(Source: Information provided by CPCB/UPPCB)

Appendix 2.8 (b)

(Referred to in Paragraph No. 2.1.9.1)

Statement showing level of pollution in the major rivers/lakes/ponds of Uttar Pradesh during the period from 2013 to 2015

S. No.	Name of River	2013				2014				2015			
		Sample Collection Point	D.O. (mg/l) range	B.O.D. (mg/l) range	Total Coliform (MPN/100 ml) range	Sample Collection Point	D.O. (mg/l) range	B.O.D. (mg/l) range	Total Coliform (MPN/100 ml) range	Sample Collection Point	D.O. (mg/l) range	B.O.D. (mg/l) range	Total Coliform (MPN/100 ml) range
1	2	3	4	5	6	7	8	9	10	11	12	13	14
1	Ganga	21	6.74 to 8.79	1.29 to 6.82	107 to 72917	21	6.51 to 9.04	1.43 to 5.66	113 to 51500	21	6.5 to 8.4	1.76 to 5.52	138 to 56500
2	Yamuna	4	4.69 to 8.06	2.13 to 8.62	3333 to 86583	4	3.83 to 8.10	2.33 to 9.22	5783 to 119167	4	4.5 to 8.2	2.4 to 9.62	7283 to 113273
3	Gomti	5	2.98 to 8.28	2.71 to 8.63	2083 to 113500	5	2.40 to 8.83	2.65 to 9.53	1723 to 144167	5	1.5 to 8.1	2.62 to 11.12	1092 to 122000
4	Ramganga	1	8.35	5.09	8250	1	6.78	3.89	5008	1	7.8	4.93	5475
5	Kali (East)	2	0 to 7.68	4.7 to 79.17	5025 to 240417	2	0 to 6.35	4.83 to 70.08	5025 to 280417	2	0 to 7.2	4.23 to 66.50	4533 to 215000
6	Hindon	3	0.56 to 1.27	23.83 to 46.33	6442 to 228333	3	0.09 to 0.34	26 to 76.58	8150 to 255000	3	0 to .1	39.367 to 254.08	27083 to 275833
7	Varuna	2	3.8 to 7.82	3.03 to 23	6925 to 194167	2	3.25 to 8.04	2.63 to 36.52	5758 to 225833	2	2.5 to 8.2	2.9 to 32.48	4517 to 222500
8	Sai River	2	7.13 to 7.65	3.11 to 3.34	4992 to 9733	2	7.49 to 7.83	2.94 to 3.71	4442 to 10192	2	7.6 to 7.8	3.33 to 3.43	3936 to 12333

1	2	3	4	5	6	7	8	9	10	11	12	13	14
9	Saryu	1	9.18	2.73	6726	1	9.15	2.71	7258	1	9.1	2.95	7358
10	Rihand Bandh	2	7.48 to 7.74	2.07 to 2.27	2933 to 3042	2	7.62 to 7.88	2.25 to 2.39	2367 to 2633	2	7.6 to 7.9	1.82 to 1.82	2158 to 2317
11	Ghaghara	2	7.53 to 7.62	2.97 to 3.21	343 to 493	2	7.53 to 7.68	2.87 to 3.37	455 to 1177	2	7.5 to 7.6	2.94 to 3.88	731 to 2442
12	Rapti	2	7.44 to 7.62	2.83 to 2.97	272 to 343	2	7.48 to 7.68	2.82 to 3.43	494 to 1175	2	7.4 to 7.6	2.74 to 4.51	638 to 3508
13	Ramgarh lake	1	8.73	4.66	760	1	8.38	5.22	1895	1	8.5	5.97	3517
14	Betva River	1	7.1	3.11	17818	1	7.11	3.27	15917	1	6.8	3.51	9292
15	Govind Sagar	1	6.96	3	14667	1	6.61	3.03	11592	1	7.1	3.08	8092
16	Samarpur Lake	1	5.49	4.56	8667	1	5.14	4.89	8942	1	5.2	4.73	8592
17	Mahil Talab	1	4.3	22.25	30775	1	1.52	29.5	24667	1	2.3	60	25250
18	Laxmi Talab	1	1.57	28.63	35083	1	0.21	44.25	30250	1	0	88	31417

(Source: Information provided by UPPCB)

Appendix 2.9 (a)
(Referred to in Paragraph No. 2.1.9.1)
Statement showing level of pollution in River Ganga during 2011-2015 (Average Value)

S No.	Regional Office	District	Sample Collection Point	Year														
				2011			2012			2013			2014			2015		
				BOD	TC	BOD	TC	BOD	TC	BOD	TC	BOD	TC	BOD	TC			
1	Muzaffarnagar	Muzaffarnagar	Shukratal	1.40	0	1.63	0	1.29	107	1.43	113	1.76	138					
2	Ghaziabad	Ghaziabad	Garh	3.42	2497	3.37	2125	2.93	1402	2.54	1268	2.77	1233					
3	Bulandshahar	Bulandshahar	Anoopshahar	2.72	1800	3.12	975	2.62	693	2.58	598	2.29	590					
4	Bulandshahar	Bulandshahar	Badaun	3.41	2233	2.76	1517	2.58	659	2.25	573	2.55	673					
5	Kanpur	Kanpur	Kanpur	8.35	151333	8.30	111818	6.82	72917	5.66	51500	5.52	56500					
6	Allahabad	Koshambi	Koshambi	3.63	4167	4.83	4958	3.51	22167	3.87	31833	4.05	32583					
7	Allahabad	Allahabad	Allahabad	3.95	8583	5.13	9583	3.63	24250	3.69	32417	4.12	34750					
8	Varanasi	Varanasi	Varanasi	3.67	18530	3.20	9167	2.99	8817	2.87	3950	3.12	3208					
9	Varanasi	Ghazipur	Ghazipur	4.15	18000	3.67	16833	3.70	23833	3.93	25667	4.28	34500					

BOD = Bio-chemical Oxygen Demand

TC = Total Coliform

(Source: Information provided by UPPCB)

Appendix 2.9 (b)
(Referred to in Paragraph No. 2.1.9.1)
Statement showing level of pollution in River Gomti at Lucknow during 2011-2015 (Average Value)

S. No.	Sampling point	2011			2012			2013			2014			2015		
		D.O. (mg/l)	B.O.D. (mg/l)	Total Coliform (MPN/100ml)	D.O. (mg/l)	B.O.D. (mg/l)	Total Coliform (MPN/100ml)	D.O. (mg/l)	B.O.D. (mg/l)	Total Coliform (MPN/100ml)	D.O. (mg/l)	B.O.D. (mg/l)	Total Coliform (MPN/100ml)	D.O. (mg/l)	B.O.D. (mg/l)	Total Coliform (MPN/100ml)
1	Manjhihat	8.3	2.7	2091	7.7	2.8	2650	7.89	2.98	2792	8.07	2.90	2440	7.83	2.99	2267
2	Gaughat	7.9	3.0	3408	7.4	3.1	3516	7.65	3.26	3917	7.67	3.31	3617	7.43	3.4	3783
3	Mohan Meakins	6.7	4.1	27833	6.0	4.5	35250	5.63	4.89	27667	5.40	5.42	21800	4.4	5.63	25917
4	Nishatganj	4.6	6.1	57833	4.1	6.4	69416	3.98	6.50	58833	3.27	7.34	71400	2.43	8.21	69000
5	Gomti Bairaj	3.7	7.1	86833	3.1	7.9	91250	3.24	7.79	94167	2.34	8.9	92500	1.61	9.92	96500
6	Pipraghat	3.1	7.9	102666	2.6	9.1	106583	2.93	8.72	116833	2.4	9.53	115583	1.46	11.12	122000
7	STP Bharwara	*	*	*	*	*	*	3.26	9.30	134800	1.17	11.95	138400	0.88	12.96	136667

Note* Sampling Started from year 2013

D.O. = Dissolved Oxygen

B.O.D. = Bio-chemical Oxygen Demand

(Source: Information provided by UPPCB)

Appendix No. 2.10 (a)

(Referred to in Paragraph No. 2.1.9.2)

Status of PM₁₀ (yearly average value in mcg/cum) in ambient air of major cities of Uttar Pradesh during the period 2011-15

S. No.	Name of the City	2011	2012	2013	2014	2015
1	Allahabad	266.85	316.20	235.85	250.35	251.70
2	Ghaziabad	233.00	246.15	278.45	246.45	258.45
3	Kanpur	196.53	225.85	202.46	196.82	201.04
4	Lucknow	185.92	185.92	191.36	174.90	163.91
5	Noida	138.70	139.85	139.85	148.10	148.10
6	Varanasi	125.55	139.35	147.90	142.45	145.15
Standard average yearly value of 60 mcg/cum.						

(Source: Data provided by UPPCB)

Appendix 2.10 (b)

(Referred to in Paragraph No. 2.1.9.2)

Statement showing detail of fly ash generated and utilised by thermal power stations during the period 2011-12 to 2015-16

(Figures in column 4,5,6,7 and 8 are in Metric Tonne)

S. No.	Name of Thermal Power Station	Year	Total fly ash generated	Percentage of fly ash to be utilised in the year	Total Fly ash to be utilised in the year	Total Fly ash actually utilised in the year	Short utilisation
1	2	3	4	5	6	7	8
1	M/s NTPC Ltd. Singrauli Super Thermal Power Station, Shaktinagar, Sonbhadra	2011-12	37.93	60	22.76	23.23	-0.47
		2012-13	37.77	75	28.33	22.66	5.67
		2013-14	37.56	90	33.80	9.85	23.95
		2014-15	37	100	37.00	6.21	30.79
		2015-16	45.49	100	45.49	3.97	41.52
	Total		195.75		167.38	65.92	101.46
2	M/s NTPC Ltd. Rihand Super Thermal Power Station Bijpur, Sonbhadra	2011-12	31.19	60	18.71	18.92	-0.21
		2012-13	34.89	75	26.17	19.71	6.46
		2013-14	44.87	90	40.38	18.94	21.44
		2014-15	48.31	100	48.31	4.93	43.38
		2015-16	43.75	100	43.75	6.57	37.18
	Total		203.01		177.32	69.07	108.25
3	M/s Anpara Thermal power Station Unit A & B Anpara, Sonbhadra	2011-12	23.63	60	14.18	0.08	14.10
		2012-13	21.29	75	15.97	0.06	15.91
		2013-14	23.98	90	21.58	0	21.58
		2014-15	25.25	100	25.25	0	25.25
		2015-16	30.94	100	30.94	0.01	30.93
	Total		125.09		107.92	0.15	107.77
4	M/s Lanco Anpara Ltd. Anpara, Sonbhadra	2011-12	0	0	0.00	0	0.00
		2012-13	9.74	50	4.87	0.08	4.79
		2013-14	16.41	70	11.49	0	11.49
		2014-15	20.38	90	18.34	0.44	17.90
		2015-16	19.49	100	19.49	1.34	18.15
	Total		66.02		54.19	1.86	52.33

Audit Report (Economic Sector) for the year ended 31 March 2016

1	2	3	4	5	6	7	8
5	M/s Obra Thermal Power Station Unit a & B Obra Sonbhadra	2011-12	15.63	60	9.38	1.60	7.78
		2012-13	12.62	75	9.47	3.06	6.41
		2013-14	13.56	90	12.20	2.92	9.28
		2014-15	13.47	100	13.47	3.09	10.38
		2015-16	14.77	100	14.77	2.92	11.85
		Total	70.05		59.29	13.59	45.70
6	NTPC Unchahar, Raebareilly	2011-12	20.59	60	12.35	12.97	-0.62
		2012-13	19.63	75	14.72	9.33	5.39
		2013-14	17.66	90	15.89	10.64	5.25
		2014-15	15.4	100	15.40	10.73	4.67
		2015-16	14.3	100	14.30	9.76	4.54
		Total	87.58		72.66	53.43	19.23
7	Harduaganj Thermal Power Station, Aligarh	2011-12	2.19	60	1.31	0	1.31
		2012-13	4.60	75	3.45	0.03	3.42
		2013-14	11.58	90	10.42	3.41	7.01
		2014-15	9.98	100	9.98	4.92	5.06
		2015-16	9.49	100	9.49	3.90	5.59
		Total	37.84		34.65	12.26	22.40
Grand Total			785.34		673.41	216.28	457.14

(Source: Guidelines issued by MoEF/CPCB and Information provided by UPPCB)

**Appendix 2.11
(Referred to in Paragraph No. 2.1.9.5)**

Present Status of Common Bio Medical Waste Treatment Facilities in Uttar Pradesh

S. No.	Name of the CBWTF Operator and Address	Capacity of the incinerator kg/hr	Treatment facility available	Remarks
1	2	3	4	5
1	M/s Spectrum Waste Solutions Pvt. Ltd. Khasra No.- 597, Jawar Nagar Mastemau, Sultanpur Road, Mohanlal Ganj Lucknow	250	Incinerator, Autoclave, shredder, E.T.P. Deep burial	Authorisation granted valid up to 31-12-16
2	M/s Synergy Waste Management (P) Ltd. Plot No. 36,37,72 Vill-Mohammadpur Nawabganj, Barabanki.	250	Incinerator, Autoclave, Shredder, E.T.P.	Authorisation granted valid up to 31-12-15
3	M/s S.N.G Mercantile Pvt. Ltd. Village Benipur Chaudhary, Bareilly	100	Incinerator, Autoclave, shredder, E.T.P., Deep burial	Self closed (Under up gradation)
4	M/s Envirad Medicare Pvt. Ltd. Parsakhera, Bareilly.	150	Incinerator, Autoclave Shredder, ETP, Deep burial	Authorisation granted valid up to 5-10-16
5	M/s Bio Medical Waste, Disposal Agency- Khasra No.- 622, Vill. Padrona Raya- Mat Mathura	100	Incinerator, Shredder, Autoclave, E.T.P.	Authorisation granted valid up to 22-7-17
6	M/s Dutt Enterprises Ltd. (Office)-29, Alkapuri Hirabag, Dayalbag, Agra-282003, (Plant)- Khasra No.- 670, Mauja- Darhera, Tahsil-Atmadpur, Agra	200	1- Incinerator	Authorisation granted valid up to 31.12.16
			2- Autoclave 100Kg/hr	
			3- Hydroclave 100 Kg/Hr, E.T.P.	
7	M/s MPCC Bijauli, Jhansi	100	Incinerator, Autoclave, Shredder, E.T.P. Static	Authorisation granted valid up to 31-12-15
8	M/s MPCC Bhelamau, Bhavti, Kanpur	200	Incinerator, Autoclave, Shredder, E.T.P.	Authorisation granted valid up to 09-5-15 Application For Renewal is under Consideration
9	M/s Willword Environmental Inc.-Chaudhrypur Mandhava, Kanpur	100	Incinerator, Autoclave, Shredder, E.T.P.	Earlier closer order issued on 27-5-14 then closer order suspended up to 29-3-15. Further Application is under Consideration
10	Synergy Waste Management (p) Ltd. 011-26933371 Subharti Medical College, Subharti Puram, Meerut	300	Incinerator, Shredding, Autoclaving, E.T.P.	Authorisation granted valid up to 31-12-15
11	Ferro Build Hard (India) Pvt. Ltd. 83-A Maheba Purab Patti, Naini, Allahabad.	200	Incinerator Chemical treatment Shredder-02 nos. Needle destroyer Effluent Treatment plant Autoclave	Authorisation granted valid up to 31-12-15
12	M/s Center for Pollution Control, Mohansarai, Varanasi.	150	Incinerator, Autoclave, Shredder, E.T.P.	Authorisation granted valid up to 2-9-15 Application For Renewal is under Consideration

Audit Report (Economic Sector) for the year ended 31 March 2016

1	2	3	4	5
13	S.S Medical System (India) Pvt. Ltd. Mau Shivala, Raibareli Road, Faizabad Mob. No.- 9838202281, 8090075708 Fax no.- 0522 4025395	100	Incinerator, Microwave Autoclave- 30 KL E.T.P.- 20 Kl/day Shredder- 100 kg/hr	Earlier closer order issued on 26.07.2013 then closer order suspended up to 12-12-14. Presently Self Closed
14	Semb Remky. Environmental Management Pvt. Ltd. C-21 Phas-1 Masuri Gulowthi Road, UPSIDC, Ghaziabad, Phone no.- 91203250674, Fax no- 0120 2678917	150	Incinerator, Autoclave 440 Lt/Batch, Shredder -50 Kg E.T.P.	Authorisation granted valid up to 16-7-16
15	MPCC, Khalilabad Industrial Area, Sant Kabir Nagar	100	Incinerator, Autoclave, Shredder E.T.P.	Authorisation granted valid up to 31-12-15
16	S.M.S.watergrase Mediowaste Management Pvt.Ltd. Mohanlalganj Lucknow	250	Incinerator, Autoclave, Shredder	Authorisation granted valid up to 31-12-16
17	Royal pollution control services, Vill-Chaspur saduwahi,Sultanpur	125	Incinerator, Autoclave, Shredder E.T.P.	Authorisation granted valid up to 28-8-15 Application for renewal is consideration
18	Silicon welfare society Vill-Banka Distt- Ghazipur	150	Incinerator, Autoclave, Shredder E.T.P.	Authorisation granted valid up to 31-12-15
19	Sangam Handiya Allahabad Medicare	250	Incinerator, Autoclave, Shredder E.T.P.	Authorisation granted valid up to 31-12-17
20	Integrated Pollution Committee Gorakhpur	100	Incinerator, Autoclave, Shredder E.T.P.	Self closed
Total Capacity		3325		

(Source: Information provided by UPPCB)

Appendix 2.12

(Referred to in Paragraph No. 2.1.9.7)

Status of E-waste Recycling/Collection/Generation units in the state of U.P.

S. No	Name and Address of the unit	Regional Office	Status of Authorisation	Status of Registration and validity	Type	Capacity (Tonne/Annum)
1	Auctus –E Recycling Solutions Pvt. Ltd., F-637, M.G. Road, Industrial Area, Ghaziabad	Ghaziabad	Grant	30.08.2019	Collection, Dismantle, Recycling	1800
2	Mahaluxmi Metal Alloys (India) Pvt. Ltd., Modinagar, Ghaziabad	Ghaziabad	Grant	24.06.2016	Collection, Dismantle,	600
3	M/s N.K. Products, 58-59, M. G. Road, Ghaziabad	Ghaziabad	Grant	22.06.2016	Collection, Dismantle	9000
4	M/s Bharat Oil Co., E-18, Site-IV, Sahibabad, Industrial Area, Ghaziabad	Ghaziabad	Grant	16.05.2018	Collection, Dismantle	4000
5	Planet Green Recycling Pvt. Ltd., G-129, Phase -1, M.G. Road, Ghaziabad	Ghaziabad	Grant	07.11.2015	Collection, Dismantle, Recycler	1500
6	Rocket Sales, Plot No. 1-12, I/A, M.G. Road, Hapur	Ghaziabad	Grant	27.08.2019	Collection, Dismantle	300
7	Arsh Recycling Pvt. Ltd., Plot No. 203, UPSDIC, I/A, M.G. Road, Ghaziabad	Ghaziabad	Grant	06.05.2016	Collection, Dismantle	9000
8	Auctus Recycling Solutions Pvt. Ltd. Habibpur, Greater Noida	Greater Noida	Grant	06.05.2016	Dismantle	19500
9	Khan Traders, B-5, site 4, Panki Industrial Area, Kanpur	Kanpur	Grant	29.06.2015	Collection, Dismantle	7190
10	Green Tech Recycling, Khasra No.-645, Acchraunds, Bahdurpur Road, Partapur, Meerut.	Meerut		19.03.2015	Collection, Dismantle	1800
11	M/s Faiz Recycling, Plot No. S-7, Industrial Area, Sikandrabad, Bulandshahar	Bulandshahar	Grant	21.12.2014	Collection	9000
12	M/s Narora Atomic Power Station, Narora, Bulandshahar	Bulandshahar	Grant	01.05.2017	Collection, Segregatio, Dismantle, Recycling	10
13	M/s Metal Alloys, E-46, Industrial Area, Ramnagar, Varanasi	Varanasi	Grant	31.05.2019	Collection	1825

Audit Report (Economic Sector) for the year ended 31 March 2016

1	2	3	4	5	6	7
14	M/s Comwen Information Technologies Pvt. Ltd., 127/35B, Chak Ragunath, Naini, Allahabad	Allahabad	Grant	11.08.2017	Storage	300
15	M/s Dasia Eco E-waste Recyclers, E-160, Industrial Area, Khalialabad, Santkabir Nagar	Basti	Grant	31.12.2017	Collection, Dismantle	720
16	M/s Sims Recycling Solutions Plot No. 1, Udyog Kendra II, Eco tech III, Greater Noida	Greater Noida	Not Applied	Not Applied	Collection, Dismantle, Recycling	1250
17	M/s J.A.O. E-Waste Recycling company, Jaitpur, Moradabad	Moradabad	Grant	23.11.2020	Collection	3001
18	M/s HIN Green E-waste, Recycling (P) Ltd. B-19/1, Summer Garden Colony, Meerut	Meerut	Grant	06.11.2017	Collection, Dismantle	750
19	M/s S R Metcast India (P) Ltd. , Agra-Mathura Road, Agra	Agra	Not Applied	27.12.2014	Collection	600
20	M/s K M Metals Suppliers, 9/270, 271, Agra	Agra	Not Applied	16.07.2012	Collection	5000
21	M/s Prakash Metal House, 39/223, Karwan, Lohamandi, Agra	Agra	Not applied	31.12.2017	Collection	1500
22	Sri Mahaveer Ji trading Company, 30/127, Chippitala, Agra	Agra	Applied	Applied	Collection	4500
23	M/s E-waste Recyclers India, E-50, UPSIDC Industrial Area, NH 2, Kosikalan, Mathura	Mathura	Grant	17.12.2016	Collection, Dismantle	6000
24	M/s Super Trading Company, Plot No. 3, Govt. Industrial Estate, Talkatora Road, Lucknow	Lucknow	Not Applied	03.04.2016	Collection, Dismantle	365
25	M/s V R Techno Enviro Services Pvt. Ltd. Khasra No. 440, Indira Priyadarshini Ward, Indira Nagar, Lucknow	Lucknow	Not Applied	09.04.2016	Collection, Dismantle	365
26	Sachin Enterprises, 84/1, plot no. 34-35, Fazalganj, Kanpur	Kanpur	Applied	Applied	Collection	5000 pieces p a (5 T/P)
27	Gandhi Traders, 91/103, Dalelpurwa, Kanpur	Kanpur	Grant	04.06.2018	Collection	5000 pieces p a (5 T/P)
Total Capacity						89,886

(Source: Information provided by UPPCB)

Appendix 2.13

(Referred to in Paragraph No. 2.1.10.1)

Statement showing cases of delays in issue of consent

S. No.	Name of the Industry M/s	Date of receipt of application	Date of Grant of NOC	Delay in issue of consent beyond prescribed time limit of four Months
1	Himalya Residency Pvt. Ltd., Rajnagar Extension, Ghaziabad	30.12.2014	28.03.2016	11
2	Nimla Organics Pvt. Ltd., S-74, & S75, M.G. Road, I/A, Hapur	19.03.2015	21.03.2016	8
3	Afcons Infrastructure Ltd, Vill. Devkhari, Bangarmau, Unnao	07.04.2015	09.03.2016	7
4	Aaradhya Alloys, Plot No. P-3, Ind. Area, Site-1, Unnao	18.05.2015	21.03.2016	6
5	Sangwan Landco Pvt. Ltd Aligarh	20.06.2015	22.03.2016	6
6	Lotus Greens Constrations Pvt.Ltd, Plot o-SC-02/A sector-150 Noida	03.06.2015	13.04.2016	6
7	L.M Mashinotech Pvt.Ltd, B-37A sector-132, Noida	03.06.2015	13.04.2016	6
8	Meejan Process, Gata No. 1460 ka & 1461, 1462, Magarwara Unnao.	24.06.2015	31.03.2016	6
9	Satyam Shakuntalam Engineering Pvt. Ltd. Sikandrabad, Bulandshahar	01.09.2015	18.03.2016	1.5
10	Juno Bitumix Pvt. Ltd., UPSIDC, Kosi, Mathura	01.09.2015	11.03.2016	1
11	C.P. Milk & Food Products (P) Ltd. 5, Agropark, Phase-II, Kursi Road, Lucknow.	09.09.2015	10.03.2016	1
12	Slaughter House, (Rendering Plant) Kamela Colony, Saharanpur	10.09.2015	03.03.2016	1
13	Tirumurti Handloom Factory, P-67, P-68 & P-122, Textiles Centre, Hapur	11.09.2015	10.03.2016	1
14	D.V.F. Infrastructures Pvt. Ltd., GHP, , Vill. Dasana, NH-24, Ghaziabad	30.09.2015	29.03.2016	2
15	L & T Construction, Gahora, Mahoba	12.10.2015	31.03.2016	1
16	Shivam Cottege Pvt. Ltd., Plot No. S111, Site-II, Loni, Road, I/A, Ghaziabad	23.10.2015	29.03.2016	1

(Source – Information provided by UPPCB)

Appendix 2.14

(Referred to in Paragraph No. 2.1.10.2)

Statement showing number of inspections to be carried out on the basis of category/size of the industry

S. No.	Size of industry	Category of industry	Frequency of visit and effluent sampling
1	Small scale	Red	Once in 12 months
		Orange	Once in three years
		Green	Once in three years
2	Large and Medium scale	Red	Once in three months
		Orange	Once in six months
		Green	Once in 12 months

(Source: MoEF orders)

Appendix 2.15
(Referred to in Paragraph No. 2.1.10.2)
Statement showing shortage of targets fixed

S N.	Year	Target Fixed by Board	Number of industries running during the year												Target to be fixed						Total Target to be fixed (15+18+21)	Short age (22-3)	
			Red						Orange						Green								
			L/M	S	T	L/M	S	T	L/M	S	T	L/M	S	T	L/M	S	T	L/M	S	T			
1	2	3	4	5	6	7	8	9	10	11	12	13	14	15	16	17	18	19	20	21	22	23	
1	2011-12	200	33	9	42	21	111	132	0	94	94	132	9	141	42	37	79	0	31	31	251	51	
2	2012-13	200	33	10	43	22	122	144	0	101	101	132	10	142	44	41	85	0	34	34	261	61	
3	2013-14	210	35	9	44	22	120	142	0	101	101	140	9	149	44	40	84	0	34	34	267	57	
4	2014-15	230	33	9	42	23	122	145	0	105	105	132	9	141	46	41	87	0	35	35	263	33	
5	2015-16	230	44	17	61	23	122	145	0	105	105	176	17	193	46	41	87	0	35	35	315	85	
Total		1070												766			422				169	1357	287

(Source: Information provided by UPPCB)

Appendix 2.16
(Referred to in Paragraph No. 2.1.10.2)

Statement showing achievement of targets set by UPPCB HQ for sample collection and analysis of Industrial Effluent

S No.	Name of the Region	2011-12				2012-13				2013-14				2014-15				2015-16			
		Target	Achievement	Shortage	Percentage of shortage	Target	Achievement	Shortage	Percentage of shortage	Target	Achievement	Shortage	Percentage of shortage	Target	Achievement	Shortage	Percentage of shortage	Target	Achievement	Shortage	Percentage of shortage
1	Kampur	675	601	74	10.96	700	618	82	11.71	710	689	21	2.96	750	652	98	13.07	750	581	169	22.53
2	Lucknow	260	232	28	10.77	260	243	0	0.00	270	210	60	22.22	300	225	75	25.00	300	170	130	43.33
3	Aligarh	180	129	51	28.33	180	150	30	16.67	186	81	105	56.45	186	82	104	55.91	185	121	64	34.59
4	Bareilly	200	130	70	35.00	200	225	(25)	(12.5)	210	218	(8)	(3.81)	230	222	8	3.48	230	235	(5)	(2.17)
5	Ghaziabad	650	730	(80)	(12.31)	700	866	(166)	(19.17)	750	1151	(401)	(53.47)	825	889	(64)	(7.76)	900	869	31	3.44
6	Noida	275	297	(22)	(8)	300	500	(200)	(66.67)	325	332	(7)	(2.15)	360	478	(118)	(32.78)	275	441	(166)	(60.36)
7	Greater Noida	0	0	0	0	0	0	0	0	0	0	0	0	0	0	0	0	225	308	(83)	(36.89)

(Source: Information provided by UPPCB)

Appendix 2.17
(Referred to in Paragraph No. 2.1.10.2)
Statement showing achievement of targets set by UPPCB HQ for sample collection and analysis of Surface water

S N	Name of the Region	2011-12				2012-13				2013-14				2014-15				2015-16			
		Target	Achievement	Shortage	Percent of shortage	Target	Achievement	Shortage	Percent of shortage	Target	Achievement	Shortage	Percent of shortage	Target	Achievement	Shortage	Percent of shortage	Target	Achievement	Shortage	Percent of shortage
1	Kanpur	1150	1066	84	7.30	1300	1347	(47)	(3.62)	1315	1032	283	21.52	1315	1017	298	22.66	1350	1154	196	14.52
2	NOIDA	150	172	(32)	(21.33)	150	152	(2)	(1.33)	175	163	12	6.86	175	322	(147)	(84)	175	196	(21)	(12)
3	Aligarh	80	132	(52)	(65)	100	103	(3)	(3)	102	122	(20)	(19.6)	102	82	20	19.61	110	120	(10)	(9.09)
4	Ghaziabad	300	539	(239)	(79.67)	400	859	(459)	(115)	465	1127	(662)	(142.4)	495	518	(23)	(4.65)	520	499	21	4.04
5	Bareilly	350	428	(78)	(22.29)	400	639	(239)	(59.75)	430	574	(144)	(33.49)	455	560	(105)	(23.08)	500	621	(121)	(24.2)
6	Lucknow	415	256	159	38.31	415	481	(66)	(15.90)	445	840	(395)	(88.76)	445	640	(195)	(43.82)	550	883	333	(60.55)
7	Greater Noida	0	0	0	0	0	0	0	0	0	0	0	0	0	0	0	0	175	20	155	88.57

(Source: Information provided by UPPCB)

Appendix 2.18
(Referred to in Paragraph No. 2.1.10.2)
Statement showing achievement of targets set by HQ for sample collection and analysis of Industrial Emission

S N	Name of the Region	2011-12				2012-13				2013-14				2014-15				2015-16			
		Target	Achievement	Shortage	Percentage of shortage	Target	Achievement	Shortage	Percentage of shortage	Target	Achievement	Shortage	Percentage of shortage	Target	Achievement	Shortage	Percentage of shortage	Target	Achievement	Shortage	Percentage of shortage
1	Kanpur	70	32	38	54.29	75	14	61	81.33	90	60	30	33.33	100	44	56	56.00	100	35	65	65.00
2	Aligarh	35	55	(20)	(57.14)	45	27	18	40.00	45	5	40	88.89	45	54	0	0	45	11	34	0
3	Ghaziabad	80	80	0	0	90	94	(4)	(4.44)	125	95	30	24.00	130	98	32	24.62	130	64	66	50.77
4	NOIDA	40	42	(2)	(5)	45	81	(36)	(80)	112	44	68	60.71	115	13	102	88.70	55	20	35	63.64
5	Lucknow	100	120	(20)	(20)	125	172	(47)	(37.60)	135	108	27	20.00	150	67	83	55.33	150	70	80	53.33
6	Bareilly	65	73	(8)	(12.31)	65	68	(3)	(4.62)	70	75	(5)	(7.14)	80	72	8	10.00	80	81	(1)	(1.23)
7	Greater Noida	0	0	0	0	0	0	0	0	0	0	0	0	0	0	0	0	75	4	71	94.67

(Source: Information provided by UPPCB)

Appendix 2.19
(Referred to in Paragraph No. 2.1.10.3)
Internal Control mechanism of the Board

The Head Office is the focus for setting policies and for providing support to the Regional Offices. It is the base for Board's Chairperson, Member Secretary and Senior Officials, whose responsibility is to ensure that the policies are delivered consistently, while allowing for local differences in environmental, social and economic climate where appropriate. The Head office issues NOC for polluting 40 category projects with and all projects attracting Environmental Impact Assessment (EIA) notification. Also Consent for 40 category projects are issued at Head office. The application of consent and NOC of all remaining industries are disposed off at Regional Offices.

Major administrative responsibilities of the Regional Offices are - inspection of industries, hospitals and local bodies; monitoring water bodies and wastewater; monitoring Ambient Air and stack emissions; inspection of sites proposed for setting up of industries to verify the suitability of the same from environmental point of view; furnishing details to the Head Office in matters relating to issue of Consent for NOC and Consent for Operation to industries and to attend to the works connected with investigations of complaints etc.; to verify cess returns, prepare assessment orders of small scale industries & collection of cess amount under Water (Prevention and Control of Pollution) Cess Act, 1977 and amendments from time to time; co-ordinating with different agencies for issue of early clearance for establishment of new industries in the area; arranging Seminars, Conferences, Training Programs and Public Awareness Programs in the area; to identify sites for disposal of Hazardous wastes; to make proposals for issue of authorisation under the Hazardous Waste Management Rules; to collect and consolidate the data in respect of schemes of NAAQM (National Ambient Air Quality Monitoring), and Board's Programs; to initiate action as per law on the complaints received in the jurisdiction; to receive and analyse the samples; to prepare/procure requirement of chemicals, equipment and instruments etc. required for proper functioning of regional labs; and any other matter pertaining to pollution at local level.

(Source: Relevant Acts/Rules and information provided by UPPCB)

Appendix 2.20
(Referred to in Paragraph No. 2.1.10.3)
Statement showing shortage of manpower

S. No.	Name of Cadre	Total sanctioned strength	Actual strength	Shortage	Shortage in percentage
1	Scientific	214	189	25	11.68
2	Engineering	181	120	61	33.70
3	Accounts	41	29	12	29.27
4	Law	17	9	8	47.06
5	Clerical & Others	366	300	66	18.03
Total		819	647	172	21 %

(Source: Information provided by UPPCB)

Appendix 2.21
(Referred to in paragraph no. 2.2.1)
Nature of work under selected schemes

(Figures in column 4 are ₹ in crore)

S. No.	Central/ State Plan	Name of the scheme	Sanctioned Cost	Nature of work
1	2	3	4	5
1	Central	Construction of Simauni tourist complex in Banda	4.48	Extension
2	Central	Tourism development of Barsana Mathura	3.56	Up-gradation
3	Central	Tourist destination development of Sarnath, Ramnagar (Mega Project) Varanasi	14.95	Up-gradation
4	Central	Development of Shahzahn Park, Fatehpur Sikari and Shilpgram	15.7	Up-gradation and Extension
5	Central	Development of Taj Nature Walk Agra	2.57	Up-gradation
6	Central	Construction of ghat near Awantikaa devi temple Bulandshahar	4.08	Extension
7	Central	Tourism development of Shiv dham at shahpur, Sultanpur	2.27	Up-gradation
8	Central	Beautification and development of Maa Chandrika Devi Dham Luckow	3.04	Up-gradation
9	Central	Installation of signage on the Historical Places of Varanasi	3.89	Extension
10	Central	Construction of ghat at Mandu Ashram on the bank of River Ganga Bulandshahar	4.52	Extension
11	Central	Tourism development of various places in Raibareilly	6.49	Up-gradation
12	Central	Development of Barua Sagar, tal behat in Jhansi/Lalitpur	5.59	Up-gradation
13	Central	Development of theme park at Kapilvastu, Siddharth nagar	3.67	Extension
14	Central	Development of Mathura Vrindavan as Mega Destination, Mathura	33.2	Up-gradation and Extension
15	Central	Tourism Development of chuharjan Devi Dham, swana baba mazar complex, Shiv mandir, Baba belghar nath dham. Pratapgarh	6.43	Up-gradation
16	Central	Development of Ayodhya as tourism circuit, Faizabad	8.65	Up-gradation
17	Central	Tourism development of Garhmau Kassaua, lake approach dam, Jhansi	6.27	Upgradation and Extension
18	Central	Tourism development of Budaun and Sambhal	6.27	Up-gradation
19	Central	Tourism development of Janki Kund Safipur, Chandrashekhar Azad's birth place, Badarika Pakshi vihar, Nawabganj, Gadakola and Rajaram Baksh fort in Unnao	4.11	Up-gradation and Extension
20	Central	Beautification of Pramukh ghats and Vishwanath temple, Varanasi	17.77	Up-gradation

1	2	3	4	5
21	Central	Development of Panchwati, Hanuman Chabutara, Gahmari park circuit, Ghazipur	6.41	Up-gradation and Extension
22	Central	Beautification of Kamadgiri Parikrama Marg, Chitrakoot	3.64	Up-gradation
23	Central	Renovation and beautification of Durghheswar Nath temple Ruddrpur, Deoria.	4.03	Up-gradation
24	Central	Tourism development of Gadhwa ghat, Varanasi	3.79	Extension
25	Central	Establishment of Institute of Hotel Management Raibareilly	16.73	Extension
26	Central	Establishment of food craft Institute Garh Mukteshwar, Hapur	9.89	Extension
27	Central	Road Facilities at Amhat Sultanpur	2.6	Up-gradation
28	Central	Tourism Development under Vrindavan Mega Destination, Mathura	9.16	Up-gradation and Extension
29	Central	Development of Night Bazar, Agra	2.77	Extension
30	State	Establishment of Lucknow Haat Lucknow (2007-08 modified in 2011-12)	9.38	Extension
31	State	Establishment of Lucknow Haat Lucknow (2011-12)	9.38	Extension
32	State	Construction of 150 bed dormitory at Shilp gram Agra	2.35	Extension
33	State	Development of Salkhan Fossil park and Lekhania painting, Sonebhdra	2.06	Up-gradation
34	State	Construction of Satsang Bhawan, Rainbasera Ayodhya, Faizabad	4.67	Extension
35	State	Renovation of roads in Tajganj Agra	197.27	Up-gradation
36	State	Beautification of Dudhwa National Park	17.96	Up-gradation
37	State	Development of Historical jalkunds Mathura	9.16	Up-gradation
38	State	Construction/tourism development/beautification of boat club, Jakhnaul canal pump and historical Sumera pond Lalitpur	6.7	Up-gradation and Extension
39	State	Upgradation of Urban Haat, Varanasi	2.05	Up-gradation
40	State	Construction of Guest House and beautification of Tulsi Smarak Rajapur Chitrakoot	2.4	Up-gradation and Extension
41	State	Development of Chandrika Devi Temple at Baxar, Unnao	2.76	Up-gradation and Extension
42	State	Installation of Flood Light at Kaiser Bagh Gate Lucknow	2.99	Extension
43	State	Construction of 3 tourist place/ghats Ghazipur	8.69	Extension
44	State	Extension and beautification work at Ramghat Chitrakoot	15.88	Up-gradation and Extension

1	2	3	4	5
45	State	Renovation of 10 Historical jalkunds and ponds	12.08	Up-gradation
46	State	Construction and renovation of Ghats at Garh Mukteshwar Brij ghat, Hapur	25.46	Up-gradation and Extension
47	State	Installation of sign boards under heritage golden arch scheme in Lucknow	4.99	Extension
48	State	Tourism Development of Mehndi Ghat at Kannauj	19	Extension
49	State	Development of Ghat at right bank of the river ganges at bara Ghazipur	2.29	Extension
50	State	Construction of Kinaram Ghat on the right bank of the river Ganga, Ghazipur	2.36	Extension
51	State	Development and beautification at Kamakhya Dham Gahmar, Ghazipur	3.17	Up-gradation and Extension
52	State	Renovation and extension of Rahi Tourist Benglow, Chitrakoot	3.94	Up-gradation and Extension
53	State	Construction of tourist reception centre at Sounauli Mahrajganj	7	Extension
54	State	Sound and lighting facility at Residency, Lucknow	5.58	Up-gradation

Note: No differentiation on the basis of up gradation and extension activities has been made by the Department for the schemes sanctioned. However in compliance of the instructions of the headquarter, schemes have been categorised on the basis of nature of work involved.

Appendix-2.22

(Referred to in paragraph no. 2.2.3)

Budget Details for the period from 2011-12 to 2015-16

(₹ in crore)

S. No.	Financial Year	State Capital Budget	Budget provided to DoT	Percentage of DoT Budget of State Budget
1	2011-12	43622.72	66.69	0.15
2	2012-13	47147.00	99.13	0.21
3	2013-14	53308.99	93.98	0.18
5	2014-15	77279.71	145.47	0.19
6	2015-16	86931.14	178.06	0.20
Total		308289.56	583.33	0.19

Appendix-2.23

Circuit wise Expenditure incurred in the State during 2011-12 to 2015-16

(Referred to in paragraph no. 2.2.3)

(₹ in crore)

S. No.	Name of the Circuits	Scheme Funded by	Number of schemes	Sanctioned Cost	Funds Released since April 2011	Expenditure incurred since April 2011	Circuit-wise percentage of Expenditure against release	Circuit-wise percentage of Expenditure incurred
1	Brij Circuit	Central	9	75.51	28.72	36.00		
		State	20	230.04	126.64	90.42		
		Total	29	305.55	155.36	126.42	81.37	37.24
2	Awadh Circuit	Central	14	62.63	28.34	22.99		
		State	95	88.35	57.84	41.17		
		Total	109	150.98	86.18	64.16	74.45	18.90
3	Vindhya Circuit	Central	9	50.48	30.66	17.11		
		State	156	62.45	47.48	33.65		
		Total	165	112.93	78.14	50.76	64.96	14.95
4	Buddhist Circuit	Central	9	36.19	20.52	25.77		
		State	39	16.47	9.90	5.18		
		Total	48	52.66	30.42	30.95	101.74	9.11
5	Bundelkhand Circuit	Central	7	28.53	5.60	9.95		
		State	31	44.78	30.89	20.44		
		Total	38	73.31	36.49	30.39	83.28	8.95
6	Eco Tourism & Adventure sports circuit	Central	0	0	0	0		
		State	2	19.94	14.98	5.66		
		Total	2	19.94	14.98	5.66	37.78	1.67
7	Water Cruise Circuit	Central	0	0.00	0.00	0.00		
		State	0	0.00	0.00	0.00		
		Total	0	0.00	0.00	0.00	0.00	0.00
8	Schemes not belonging to any defined circuits of state	Central	10	36.40	22.32	23.54		
		State	23	34.72	16.44	7.63		
		Total	33	71.12	38.76	31.17	80.42	9.17
	Grand Total	Central	58	289.74	136.16	135.36	99.41	39.87
		State	366	496.75	304.17	204.15	67.12	60.12
		Total	424	786.49	440.33	339.51	77.10	

Appendix-2.24

Circuit wise Expenditure of the selected schemes

(Referred to in paragraph no.2.2.3)

(Figures in column 5,6,7,8 and 9 are in ₹ in crore)

S. No.	Name of the Circuits	Scheme Funded by	Number of schemes	Sanctioned Cost	Fund Released			Expenditure incurred		Physical Status of Schemes		
					April 2011 to March 2016	Up to March 2016	Since April 2011 to March 2016	Up to March 2016	Completed	Running	Not Commenced	Abandoned
1	2	3	4	5	6	7	8	9	10	11	12	13
1	Brij Circuit	Central State Total	6 4 10	66.96 220.86 287.82	25.03 117.79 142.82	37.70 120.14 157.84	32.67 84.12 116.79	32.67 84.12 116.79	3 1 4	1 3 4	0 0 0	2 0 2
2	Awadh Circuit	Central State Total	8 8 16	49.04 49.37 98.41	23.37 26.77 50.14	30.42 31.78 62.20	20.95 20.31 41.26	20.95 20.31 41.26	3 2 5	4 5 9	0 1 1	1 0 1
3	Vindhya Circuit	Central State Total	4 6 10	36.34 21.12 57.46	15.60 13.20 28.80	20.08 13.02 33.10	9.12 9.93 19.05	9.12 9.93 19.05	1 0 1	3 6 9	0 0 0	0 0 0
4	Buddhist Circuit	Central State Total	3 1 4	22.65 7.00 29.65	12.48 2.00 14.48	19.57 2.00 21.57	19.34 0.00 19.34	19.34 0.00 19.34	1 0 1	2 0 2	0 0 0	0 1 1
5	Bundelkhand Circuit	Central State Total	4 4 8	14.78 28.92 43.70	3.63 19.77 23.40	8.21 19.77 27.98	7.43 14.29 21.72	7.43 14.29 21.72	1 0 1	3 4 7	0 0 0	0 0 0
6	Eco Tourism & Adventure sports circuit	Central State Total	0 1 1	0.00 17.96 17.96	0.00 13.00 13.00	0.00 13.00 13.00	0.00 3.76 3.76	0.00 3.76 3.76	0 0 0	0 1 1	0 0 0	0 0 0

1	2	3	4	5	6	7	8	9	10	11	12	13	
7	Water Cruise Circuit	Central	0	0.00	0.00	0.00	0.00	0.00	0	0	0	0	
		State	0	0.00	0.00	0.00	0.00	0.00	0	0	0	0	0
		Total	0	0.00	0.00	0.00	0.00	0.00	0.00	0	0	0	0
8	Schemes not belonging to any defined circuits of state	Central	4	19.62	7.69	11.00	8.93	8.93	2	1	1	0	
		State	1	25.45	10.00	10.00	3.75	3.75	0	1	1	0	0
		Total	5	45.07	17.69	21.00	12.68	12.68	2	2	2	1	0
Total		Central	29	209.39	87.80	126.98	95.19	98.44	11	14	1	3	
		State	25	370.68	202.53	209.71	136.16	136.16	3	20	1	1	
Grand Total			54	580.07	290.33	336.69	231.35	234.60	14	34	2	4	

Appendix-2.25

**Details of schemes directly forwarded to Ministry of Tourism, Government of India
(Referred to in paragraph no. 2.2.3.1)**

S. No.	Name of the scheme	Date of sending the Proposal to GoI	Sanctioned Cost (₹ in Crore)
1	Const of Simauni tourist complex in Banda	Oct-06	3.98
2	Tourist destination development of SarnathRamnagar (Mega Project) Varanasi	Sep-08	14.16
3	Tourism development of various places in Raibareilly	Feb-09	6.49
4	Development of Baruasagar, talbehat in Jhansi/Lalitpur	Feb-09	5.06
5	Beautification and development of Maa Chandrika Devi Dham, Luckow	Dec-09	3.02
6	Development of Taj Nature Walk Agra	Jan-10	3.33
7	Construction of ghat near awantikaadevi temple Bulandshahar	Mar-10	4.13
8	Tourism development of GarhmauKassaua, lake approach dam, Jhansi	Aug-10	5.86
9	Installation of Sinage on the Historical Places of Varanasi	Feb-11	3.89
10	Development of Ayodhaya as tourism circuit, Faizabad	Sep-12	6.56
11	Tourism Development under Vrindavan Mega Destination, Mathura	Sep-13	7.90
Total			64.38

Appendix-2.26
Statement showing status of completed schemes
(Referred to in paragraph no. 2.2.4.1)

S. No.	Central / State Plan	Name of the scheme	Total Sanctioned Cost (by Gol and GoUP)	Sanction by Gol/ GoUP (month-year)	Month of schedule completion	Month of actual completion	Delay in completion (in months)	Month of handover
1	2	3	4	5	6	7	8	9
1	Central	Construction of Simauni tourist complex in Banda	4.48	Nov-06	Nov-07	Oct-14	88	Dec-14
2	Central	Tourism development of Barsana Mathura	3.56	Oct-07	Apr-09	Oct-12	41	Jan-14
3	Central	Tourist destination development of Sarnath Ramnagar (Mega Project) Varanasi	14.95	Dec-08	Dec-10	Dec-14	48	Mar-15
4	Central	Tourism development of various places in Raibareilly	6.49	Feb-09	Feb-11	Mar-13	24	Awaited
5	Central	Development of Shahzahn Park, Fatehpur Sikari & Shilpgram	15.7	Feb-10	Feb-12	Nov-14	36	Mar-14
6	Central	Development of Taj Nature Walk Agra	2.57	Feb-10	Feb-12	Sep-13	19	Awaited
7	Central	Construction of ghat near Awantikaadevi temple Bulandshahar	4.08	Sep-10	Jan-12	Aug-12	6	May-13
8	Central	Tourism development of Shiv dham at shahpur, Sultanpur	2.27	Aug-11	Jan-12	Mar-15	32	Awaited
9	Central	Beautification and development of Maa Chandrika Devi Dham Lucknow	3.04	Oct-12	Oct-13	Mar-14	6	Mar-15
10	Central	Installation of Signage on the Historical Places of Varanasi	3.89	Oct-12	Apr-13	Jun-14	13	Awaited
11	Central	Construction of ghat at Mandu Ashram on the bank of River Ganga Bulandshahar	4.52	Jun-13	Dec-13	Dec-14	12	Dec-14
12	State	Establishment of Lucknow Haat Lucknow (2007-08)	9.38	Mar-08	Not Fixed	Mar-14	NA	Modified
13	State	Establishment of Lucknow Haat Lucknow (2011-12)	9.38	Aug-11	Not Fixed	Mar-14	NA	Awaited
14	State	Construction of 150 bed dormitory at Shilp gram Agra	2.35	Jan-10	Not Fixed	Feb-12	NA	Awaited

Appendix-2.27

Blockade of Fund released by GoUP for Centrally funded schemes under execution
(Referred to in paragraph no. 2.2.4.2)

(Figures in column 3& 9 are in ₹ in crore)

S. No.	Name of the scheme	Total sanctioned cost (by GoI and GoUP)	Sanction by GoI (month-year)	Sanction by GoUP (month-year)	Month of actual commencement	Month of scheduled completion	Delay in completion upto March 2016 (in months)	Fund released Upto March 2016
1	2	3	4	5	6	7	8	9
1	Development of Barua Sagar, tal behat in Jhansi/Lalitpur	5.59	Sep-10	Feb-11	Mar-11	Aug-12	43	5.59
2	Development of theme park at Kapilvastu Siddharth nagar	3.67	Sep-11	Mar-12	Sep-14	Mar-13	36	2.59
3	Development of Mathura Vrindavan as Mega Destination, Mathura	33.2	Dec-11	Sep-12	Sep-12	Nov-13	28	15.89
4	Tourism Development of chuharjan Devi Dham, swana baba mazar complex, Shiv mandir, Baba belghar nath dham. Pratapgarh	6.43	Mar-12	Mar-13	Aug-13	Sep-13	30	5.14
5	Development of Ayodhya as tourism circuit, Faizabad	8.65	Mar-13	Mar-14	Apr-14	Mar-15	12	4.81
6	Tourism development of Garhmu Kassaua, lake approach dam, Jhansi	6.27	Mar-13	Oct-14	Oct-14	Mar-15	12	1.17
7	Tourism development of Budaun and Sambhal	6.27	Mar-13	Jan-14	Apr-14	Mar-15	12	0.40

1	2	3	4	5	6	7	8	9
8	Tourism development of Janki Kund safipur, chandrashekhar azad's birth place, badarika pakshi vihar, nawabganj, gadakola and rajaram baksh fort in dist Unnao	2.82	Sep-13	Sep-14	Jan-15	Sep-14	18	2.82
9	Development of Panchwati, Hanuman Chabutara, Gahmari park circuit, Ghazipur	6.41	Mar-14	Sep-14	Dec-14	Mar-15	12	3.23
10	Beautification of Kamadgiri Parikrama Marg, Chitrakoot	2.92	Mar-14	Oct-14	Dec-14	Apr-15	11	1.45
11	Renovation and beautification of Dugheswar nath temple Ruddrpur, Deoria.	4.03	Mar-14	Sep-14	Mar-16	Sep-15	6	2.03
12	Tourism development of Gadwa ghat, Varanasi	3.79	Sep-12	Mar-13	Oct-13	Sep-13	30	1.28
	Total	90.05						46.40

Appendix-2.28

(Referred to in paragraph no. 2.2.4.2)

Lapse of Central Financial Assistance due to delay in execution of work

(Figures in column 3, 7, 9, 10 and 11 are ₹ in crore)

S. No	Name of the scheme	Amount sanctioned by GoI	Date of schedule completion	Date of actual completion of Scheme	Delay in completion (months)	CFA received	Date of receipt of CFA	CFA not received	CFA born/to be born by GoUP	Fund released against col. no. 9
1	2	3	4	5	6	7	8	9	10	11
1	Tourism development of Shiv dham at Shahpur, Sultanpur	2.27	Jan-12	Jun-15	40	1.81	Aug-2011	0.46	0.33	0.33
2	Development of theme park at Kapilvastu, Siddharthnagar	3.23	Feb-12	Still Running	49	2.58	Sept-2011	0.65	0.00	0.00
3	Development of Baruasagar, talbehat in Jhansi/Lalitpur	5.06	Aug-12	Still running	43	4.05	Aug-2010	1.01	0.00	0.00
4	Tourism Development of chuharjan Devi Dham, swana baba mazar complex, Shiv mandir, Baba belgharnath dham. Pratapgarh	6.43	Sep-13	Still running	30	5.14	April-2012 & Oct-2012	1.29	0.78	0.00
5	Tourism development of Janki Kund safipur, Chandrashekhar Azad's birth place, Badarika pakshi vihar, Nawabganj, gadakola and Rajaram Baksh fort in dist. Unnao	4.16	Sep-14	Still Running	16	0.83	Oct-2013	3.33	0.00	0.00

1	2	3	4	5	6	7	8	9	10	11
6	Development of Ayodhya as tourism circuit, Faizabad	6.56	Mar-15	Still running	12	3.07	Mar-2013	3.49	1.49	1.49
7	Development of Panchwati, Hanuman Chabutara, Gahmari park circuit, Ghazipur (also covered in District plan as per march 2014 sl no 25)	6.41	Mar-15	Still running	12	0.05	Mar-2014	6.36	3.18	3.18
8	Tourism development of Garhmu Kassaua, lake approach dam, Jhansi	5.86	Mar-15	Still running	12	1.17	Mar-2013	4.69	0.00	0.00
9	Tourism development of Budaun and Sambhal	7.96	Mar-15	Still running	12	0.40	April-2013	7.56	5.24	0.00
10	Development of Night Bazar, Agra	2.44	Apr-15	Abandoned	11	0.03	Dec-2014	2.41	0.00	0.00
	Total	50.38				19.13		31.25	11.02	5.00

Appendix 2.29

(Referred to in paragraph no. 2.2.4.2)

Centrally funded schemes not being implemented due to site/land not finalised

S. No.	Name of the scheme	Month of Sanction	Sanctioned Cost (₹ in crore)	Reasons and remarks
1	Construction of Waysides Amenities at Amhat, Sultanpur	July-10	2.61	Due to lapse of prior assessment of ownership of land on part of DoT, as required under the GoI guidelines. Work could not commence and scheme was ultimately dropped in February 2013.
2	Construction of Ghat at left bank of Ganga near Garhwa District, Varanasi	Sept-12	3.79	Despite running dispute since 2002 on selected land for work, Executing Agency (EA) of the DoT, commenced (18 October 2013) the work and incurred Rs. 0.65 crore by March 2013. Since then work is lying stopped.
Total			6.40	

Appendix-2.30

(Referred to in paragraph no. 2.2.4.2)

Detail of Centrally funded schemes in which funds kept idle by GoUP and Executing Agencies

(Figures in column 3, 4, 8 & 12 are ₹ in crore)

S. No	Name of the scheme	Sanction Amount	Funds kept idle by GoUP			Funds kept idle by Executing Agency					
			Amount received from Gol	Month of receipt of funds from Gol	Month of release of funds to EA	Funds kept idle beyond six months (months upto March 2016)	Fund released to EA	Month of release of funds	Month of commencement of work	Funds kept idle (in months upto March 2016)	Loss of interest on idle funds (at the rate of 4%)
1	2	3	4	5	6	7	8	9	10	11	12
1	Construction of Simauni tourist complex in Banda	4.48	3.18	Nov-06	Mar-08	9	3.18	Mar-08	Sep-10	29	0.31
2	Tourism development of Barsana Mathura	3.56	2.56	Oct-07	Mar-08	0	2.56	Mar-08	Jun-10	26	0.22
3	Establishment of FCI, Garh Mukteshwar, Hapur	4.75	2.00	Dec-07	Not released	92	NIL	NA	NA	0	0.00
4	Establishment of IHM, Raibareilly	16.73	4.00	Apr-08	Sep-10 (Refunded)	22	NIL	NA	NA	0	0.00
5	Tourism development of various places in Raibareilly	6.49	0.05	Feb-09	Mar-11	18	5.19	Mar-11	May-11	1	0.02
			5.14	Mar-09	Mar-11	17					
6	Development of Shahzahn Park, Fatehpur Sikari & Shilpgram	15.70	8.26	Feb-10	Oct-11	13	0.27	Oct-11	Jul-11	0	0.00
7	Development of Taj Nature Walk Agra	2.57	1.62	Feb-10	Jun-10	0	1.28	Jun-10	Oct-10	3	0.01
8	Road Facilities at Amhat Sultanpur	2.60	1.85	Jul-10	Feb-11	0	1.85	Feb-11	Feb-13 (refunded)	23	0.14
9	Development of Mathura Vrindavan as Mega Destination, Mathura	33.20	15.89	Dec-11	Oct-12	3	2.18	Oct-12	Sep-12	0	0.00
10	Tourism Development of chuharjan Devi Dham, Pratapgarh	6.43	2.06	May-12	Apr-13	4	1.03	Apr-13	Aug-13	3	0.01
			3.08	Oct-12	Aug-13	3					

Audit Report (Economic Sector) for the year ended 31 March 2016

1	2	3	4	5	6	7	8	9	10	11	12
11	Tourism development of Gadwa ghat, Varanasi	3.79	3.21	Sep-12	Apr-13	0	1.28	Apr-13	Oct-13	5	0.02
12	Beautification and development of Maa Chandrika Devi Dham Luckow	3.04	2.42	Oct-12	Mar-13	0	1.22	Mar-13	Aug-13	4	0.02
13	Installation of Signage on the Historical Places of Varanasi	3.89	3.11	Oct-12	Mar-13	0	3.11	Mar-13	Nov-13	7	0.07
14	Development of Ayodhaya as tourism circuit, Faizabad	8.65	1.31	Mar-13	Mar-14	5	1.31	Mar-14	Apr-14	0	0.00
15	Tourism development of Garhmau Kassaua, lake approach dam, Jhansi	6.27	1.17	Mar-13	Oct-14	12	1.17	Oct-14	Oct-14	0	0.00
16	Tourism development of Budaun and Sambhal	6.27	0.40	Apr-13	Mar-14	4	0.40	Mar-14	Apr-14	0	0.00
17	Tourism development of Janki Kund safipur, Unnao	4.11	0.83	Oct-13	Sep-14	4	0.83	Sep-14	Jan-15	3	0.01
18	Beatification of Pramukh ghat and Vishwanath temple, Varanasi	17.77	3.60	Feb-15	Mar-15	0	3.60	May-15	Aug-15	2	0.02
Total		150.29	65.74				30.46				0.85

Appendix 2.31
(Referred to in paragraph no. 2.2.4.3)

Details of schemes funded by GoUP running without any prefixed timeline

S. No.	Name of the scheme	Sanction Amount (₹ in Crore)	Sanction by GoUP (month-year)	Work actually commenced (month-year)	No. of Months upto March 2016 from date of sanction
1	Development of salkhan fossil park and lekhania painting Sonebhdra	1.85	Jan-13	Jan-13	38
2	Construction of Satsang Bhawan, Rainbasera Ayodhya, Faizabad	4.67	Mar-13	Oct-13	36
3	Renovation of roads in Tajganj Agra	197.27	Oct-13	Jun-14	29
4	Beautification of Dudhwa National Park	17.96	Dec-13	Jun-14	27
5	Development of Historical jalkunds Mathura	9.16	Jan-14	Jan-14	26
6	Construction/tourism development/beautification of boat club, Jakhnaul canal pump and historical Sumera pond Lalitpur	6.70	Mar-14	Jun-14	24
7	Upgradation of Urban Haat, Varanasi	2.05	Mar-14	Aug-14	24
8	Construction of Guest House and beautification of Tulsi Smarak Rajapur Chitrakoot	2.40	Mar-14	NA	24
9	Installation of Flood Light at Kaiser Bagh Gate Lucknow	2.99	Oct-14	Dec-14	17
10	Construction of 3 tourist place/ghats Ghazipur	8.69	Nov-14	NA	16
11	Extension and beautification work at Ramghat Chitrakoot	15.88	Nov-14	NA	16
12	Renovation of 10 Historical jalkunds and ponds	12.08	Mar-15	Apr-15	13
13	Construction and renovation of Ghats at Garh Mukteshwar Brijghat, Hapur	25.46	Mar-15	Oct-15	13
14	Installation of sign boards under heritage golden arch scheme in Lucknow	4.99	Mar-15	May-15	13
15	Tourism Development of Mehndi Ghat at Kannauj	19.00	May-15	Apr-15	10
16	Development of Ghat at right bank of the river ganges at bara Ghazipur	2.29	Jun-15	NA	9
17	Construction of Kinaram Ghat on the right bank of the river ganges, Ghazipur	2.36	Jun-15	NA	9
18	Development of Chandrika Devi Temple at Baxar, Unnao	2.76	Mar-14	Jan-15	24
19	Development and beautification at Kamakhya Dham Gahmar, Ghazipur	3.17	NA	NA	NA
20	Renovation and extensiton of Rahi Tourist Benglow Chitrakoot	3.94	NA	NA	NA
Total		345.67			

Appendix-2.32

Loss of interest due to keeping of fund idle by Executing Agencies in State funded schemes
(Referred to in paragraph no. 2.2.4.3)

(Figures in column 3, 4, 9 & 10 are ₹ in Crore)

S. No.	Name of the scheme	Sanctioned Cost	Fund released to EA	Name of EA	Month of funds released	Month of commencement of work	Funds kept Idle (months up to March 2016)	Loss of interest for idle months at the rate of 4%
1	2	3	4	5	7	8	9	10
1	Establishment of Lucknow Haat, Lucknow	9.38	5.00	UPRNN	Apr-08	Sep-11	40	0.67
2	Beautification of Dudhwa National Park	17.96	5.00	UPRNN	Dec-13	Jun-14	5	0.08
3	Construction/tourism development/beautification of boat club, Jakhnaul canal pump and historical Sumera pond Lalitpur	6.70	1.00	UPPCL (Project)	Mar-14	Jun-14	2	0.01
4	Development of Chandrika Devi Temple at Baxar, Unnao	2.76	1.10	UPAEVP	Mar-14	Jan-15	9	0.03
5	Construction of tourist reception centre at sounauli Mahrajganj	7.00	1.96	UPAEVP	Mar-15	Aug-15 (Fund returned by EA)	4	0.03
6	Construction and renovation of Ghats at Garh Mukteshwar Brijghat, Hapur	25.46	5.00	Irrigation Department	May-15	Oct-15	4	0.07
7	Sound and lighting facility at Residency Lucknow	5.58	2.79	UPRNN	Jun-15	Commencement awaited	8	0.07
8	Construction of Kinaram Ghat on the right bank of the river ganges, Ghazipur	2.36	1.00	Irrigation Department	Jun-15	Utilisation not received	8	0.03
	Total	77.20	22.85					0.99

Appendix-2.33
(Referred to in paragraph no. 2.2.4.4)
Statement showing award of work to Executing Agencies which were not notified

S. No.	Name of the scheme	Month of award	Sanctioned Cost (₹ in Crore)	Executing agencies to whom works were awarded	Nature of deficiency
1	Tourism development of various places in Raibareilly	Mar-09	6.49	Rural Engineering Services	Not notified as executing agency at the time of award of work
2	Development of Historical jalkunds Mathura	Jan-14	9.16	U P Project Corporation	U P Project Corporation
3	Construction/tourism development/beautification of boat club, Jakhnaul canal pump and historical Sumera pond Lalitpur	Mar-14	6.70	U P Project Corporation	is notified as executing agency for the work costing upto 5 crore
4	Renovation of 10 Historical jalkunds and ponds	Mar-15	12.08	U P Project Corporation	
5	Development of Panchwati, Hanuman Chabutara, Gahmari park circuit, Ghazipur	Sept-14	6.41	Irrigation Department	
6	Construction of ghat near Awantikaa devi temple Bulandshahar	Jan-11	4.08	Irrigation Department	
7	Tourism development of Garhmau Kassaua, lake approach dam, Jhansi	Oct-14	6.27	Irrigation Department	Not notified as executing agency
8	Extension and beautification work at Ramghat Chitrakoot	Nov-14	15.88	Irrigation Department	
9	Construction and renovation of Ghats at Garh Mukteshwar Brijghat, Hapur	Mar-15	25.46	Irrigation Department	
10	Beautification of Pramukh ghat and Vishwanath temple, Varanasi	Nov-14	17.77	Uttar Pradesh Power Corporation Ltd.& Nagar Nigam, Varanasi	Not notified as executing agency
Total			110.30		

Appendix-2.34

(Referred to in paragraph no. 2.2.4.4)

Commencement of work without Technical Sanction

S. No.	Name of Scheme	Sanction Cost (₹ in Crore)	Name of Executing Agency	Date of actual commencement	Date of Technical Sanction
1	Construction of 150 bed dormitory at Shilp gram Agra	2.35	UPRNN, Unit Agra	Jan-10	July -10
2	Development of Shahzahn Park, Fatehpur Sikari & Shilpgram	15.70	UPRNN Suda Unit-Agra	Sep-10	Nov-10
3	Development of Taj Nature Walk Agra	2.57	Forest Department	Oct-10	Yet not obtained
4	Development of Barua Sagar, tal behat in Jhansi/Lalitpur	5.59	UPRNN Unit-1 (Electrical Unit), Jhansi	Mar-11	April-14
5	Development of Mathura Vrindavan as Mega Destination, Mathura	33.20	UPRNN -SUDA Unit-3, Mathura	Sep-12	Oct-14
6	Tourism development of Shiv dham at Shahpur, Sultanpur	2.27	DDSF, Sultanpur	Oct-12	Feb-14
7	Development of Salkhan fossil Park and Iekhania painting Sonbhadra	1.85	Forest Department	Jan-13	Yet not obtained
8	Construction of Satsang Bhawan, Rainbasera Ayodhya, Faizabad	4.67	UPRNN Unit - Sultanpur	Oct-13	Aug-15
9	Tourism development of Budaun and Sambhal	6.27	Project Manager UPRNN	Apr-14	June-16
10	Installation of Flood Light at Quaisar Bagh Gate Lucknow	2.99	UPRNN High Court Electrical Unit Lucknow	Dec-14	June-15
Total		77.46			

Appendix-2.35

(Referred to in paragraph no. 2.2.4.4)

Detail of Labour Cess not deposited by Executing Agency

(Figures in column 6, 7, 8, & 9 are ₹ in lakh)

S. No.	Name of Scheme	Date of sanction	Date of release of funds	Name of executing agency	Value of work executed	Labour cess to be deposited	Labour cess deposited	Pending liability of labour cess
1	2	3	4	5	6	7	8	9
1	Development of Salkhan phasil park and Lekhania painting, Sonebhdra	11.01.2013	07.02.2013	Kaimoor wild life Division Mirzapur (Forest Department)	103.00	1.03	0	1.03
2	Tourism development of Shiv dham at Shahpur, Sultanpur	31.03.2012	16.04.2012	DDSF Sultanpur	214.00	2.14	0	2.14
Total					317.00	3.17	0	3.17

Appendix – 3.1
(Referred to in paragraph 3.1)
Statement showing not levy of surcharge

(Amount in ₹)

S. No.	Date of registry	Plot No.	Area of allotted plot (in sq. mtr.)	Allotment rate (₹ sq. mtr.)	Sale value of plot	Surcharge @ 10 per cent on sale value of plot
1	2	3	4	5	6 (4*5)	7(6*10/100)
A. Name of scheme-Preet Vihar-1						
1	11 December 2009	K-01	15	2505.00	37575.00	3757.50
2	24 February 2010	K-62	12	13905.00	166860.00	16686.00
3	30 March 2010	K-14	17.4	5241.38	91199.99	9120.00
4	14 May 2010	K-61	12	8105.00	97260.00	9726.00
5	23 February 2011	K-81	12	25000.00	300000.00	30000.00
6	12 May 2011	K-66	12	14255.00	171060.00	17106.00
7	12 May 2011	K-67	12	14605.00	175260.00	17526.00
8	21 June 2011	C-3/08	116.25	12900.00	1499625.00	149962.50
9	08 July 2011	C-3/13	116.25	11000.00	1278750.00	127875.00
10	01 November 2011	K-60	12	26000.00	312000.00	31200.00
11	01 November 2011	K-59	15	25000.00	375000.00	37500.00
12	16 November 2011	K-89	12	25600.00	307200.00	30720.00
13	27 December 2011	K-27	15	5600.00	84000.00	8400.00
14	27 December 2011	K-84	12	25000.00	300000.00	30000.00
15	02 March 2012	K-78	12	21500.00	258000.00	25800.00
16	30 March 2012	C-3/10	116.25	13000.00	1511250.00	151125.00
17	19 September 2012	C-3/05	116.25	16500.00	1918125.00	191812.50
18	22 October 2012	K-85	12	22500.00	270000.00	27000.00
19	17 July 2013	C-3/19	116.25	12500.00	1453125.00	145312.50
20	17 July 2013	C-3/18	116.25	12400.00	1441500.00	144150.00
Total(A)			879.90		12047789.99	1204779.00
B-Name of Scheme-Anand Vihar						
1	30 July 2011	J-68	450	6000.00	2700000.00	270000.00
2	31 January 2012	L-518	200	5500.00	1100000.00	110000.00
3	04 February 2012	L-541	200	5500.00	1100000.00	110000.00
4	05 March 2012	J-63	450	6000.00	2700000.00	270000.00
5	21 March 2012	L-503	200	5500.00	1100000.00	110000.00
6	26 March 2012	L-04	200	5500.00	1100000.00	110000.00
7	27 March 2012	J-083	450	6000.00	2700000.00	270000.00
8	28 March 2012	L-707	200	5500.00	1100000.00	110000.00
9	30 March 2012	L-504	200	5500.00	1100000.00	110000.00
10	12 April 2012	L-581	200	5500.00	1100000.00	110000.00
11	20 April 2012	L-501	200	5500.00	1100000.00	110000.00
12	21 May 2012	L-559	200	5500.00	1100000.00	110000.00
13	22 May 2012	L-524	200	5500.00	1100000.00	110000.00

1	2	3	4	5	6(4*5)	7(6*10/100)
14	25 May 2012	L-583	200	5500.00	1100000.00	110000.00
15	29 May 2012	L-557	200	5500.00	1100000.00	110000.00
16	29 May 2012	L-08	200	5500.00	1100000.00	110000.00
17	29 May 2012	L-11	200	5500.00	1100000.00	110000.00
18	29 May 2012	L-12	200	5500.00	1100000.00	110000.00
19	19 June 2012	L-515	200	5500.00	1100000.00	110000.00
20	19 June 2012	L-521	200	5500.00	1100000.00	110000.00
21	29 June 2012	L-526	200	5500.00	1100000.00	110000.00
22	12 July 2012	L-09	200	5500.00	1100000.00	110000.00
23	16 July 2012	L-15	200	5500.00	1100000.00	110000.00
24	04 September 2012	L-543	200	5500.00	1100000.00	110000.00
25	11 September 2012	L-510	200	5500.00	1100000.00	110000.00
26	12 September 2012	L-539	200	5500.00	1100000.00	110000.00
27	12 September 2012	L-540	200	5500.00	1100000.00	110000.00
28	12 September 2012	L-552	200	5500.00	1100000.00	110000.00
29	14 September 2012	L-546	200	5500.00	1100000.00	110000.00
30	14 September 2012	L-594	200	5500.00	1100000.00	110000.00
31	14 September 2012	L-508	200	5500.00	1100000.00	110000.00
32	14 September 2012	L-505	200	5500.00	1100000.00	110000.00
33	14 September 2012	L-500	200	5500.00	1100000.00	110000.00
34	19 September 2012	L-537	200	5500.00	1100000.00	110000.00
35	20 September 2012	L-544	200	5500.00	1100000.00	110000.00
36	20 September 2012	L-591	200	5500.00	1100000.00	110000.00
37	26 September 2012	L-525	200	5500.00	1100000.00	110000.00
38	08 October 2012	L-550	200	5500.00	1100000.00	110000.00
39	08 October 2012	L-551	200	5500.00	1100000.00	110000.00
40	08 October 2012	L-587	200	5500.00	1100000.00	110000.00
41	18 October 2012	L-592	200	5500.00	1100000.00	110000.00
42	09 November 2012	L-706	200	5500.00	1100000.00	110000.00
43	07 December 2012	L-502	200	5500.00	1100000.00	110000.00
44	10 December 2012	L-03	200	5500.00	1100000.00	110000.00
45	13 December 2012	L-702	200	5500.00	1100000.00	110000.00
46	19 December 2012	L-584	200	5500.00	1100000.00	110000.00
47	26 December 2012	L-520	200	5500.00	1100000.00	110000.00
48	07 January 2013	L-513	200	5500.00	1100000.00	110000.00
49	04 February 2013	L-542	200	5500.00	1100000.00	110000.00
50	04 February 2013	L-509	200	5500.00	1100000.00	110000.00
51	06 February 2013	L-590	200	5500.00	1100000.00	110000.00
52	23 February 2013	L-516	200	5500.00	1100000.00	110000.00
53	14 March 2013	L-13	200	5500.00	1100000.00	110000.00
54	23 March 2013	L-554	200	5500.00	1100000.00	110000.00
55	09 April 2013	L-533	200	5500.00	1100000.00	110000.00
56	16 April 2013	L-14	200	5500.00	1100000.00	110000.00
57	20 April 2013	L-547	200	5500.00	1100000.00	110000.00
58	25 June 2013	L-07	200	5500.00	1100000.00	110000.00

Audit Report (Economic Sector) for the year ended 31 March 2016

1	2	3	4	5	6 (4*5)	7 (6*10/100)
59	25 June 2013	L-523	200	5500.00	1100000.00	110000.00
60	17 July 2013	L585	200	5500.00	1100000.00	110000.00
61	14 August 2013	L-06	200	5500.00	1100000.00	110000.00
62	04 October 2013	J-64	450	6000.00	2700000.00	270000.00
63	21 October 2013	L-588	200	5500.00	1100000.00	110000.00
64	05 February 2014	L-514	200	5500.00	1100000.00	110000.00
65	28 March 2014	L-705	200	5500.00	1100000.00	110000.00
66	28 April 2014	L-01	250	5824.00	1456000.00	145600.00
67	26 May 2014	L-506	200	5500.00	1100000.00	110000.00
68	15 July 2014	L-519	200	5396.00	1079100.00	107910.00
69	28 July 2014	L-549	200	5401.00	1080200.00	108020.00
70	28 July 2014	L-704	200	5500.00	1100000.00	110000.00
71	30 July 2014	L-16	250	5104.00	1276040.00	127604.00
72	01 August 2014	K-4	20910	12340.00	258029400.00	25802940.00
73	12 December 2014	L-535	200	5500.00	1100000.00	110000.00
74	01 January 2015	L-570	220	5500.00	1210000.00	121000.00
75	23 February 2015	L-708	200	5500.00	1100000.00	110000.00
76	16 March 2015	L-548	200	5500.00	1100000.00	110000.00
77	07 May 2015	L-532	200	5500.00	1100000.00	110000.00
78	12 May 2015	L-534	200	5500.00	1100000.00	110000.00
79	23 May 2015	L-710	200	5500.00	1100000.00	110000.00
80	27 July 2015	L-713	200	5500.00	1100000.00	110000.00
81	29 July 2015	J-75	450	6000.00	2700000.00	270000.00
82	14 September 2015	G-289	91	5500.00	500500.00	50050.00
Total (B)			38371.00		355131240.00	35513124.00
Total (A)+(B)			39250.90		367179029.99	36717903.00

Appendix-3.2
(Referred to in paragraph 3.4)
Statement showing Loss of Interest on Government Fund

(Amount in ₹)

S. No.	Month/Year	Share of Government Department	Rate of Interest (in per cent)	Period of Blockade (in Months)	Interest*
1	2	3	4	5	6 (3X4X5/1200)
1	April-2013	719169	9.50	33	187882
2	May-2013	583005	9.50	32	147694
3	June-2013	1811650	9.25	31	432908
4	July-2013	4178610	9.25	30	966303
5	August-2013	7957174	9.25	29	1778759
6	September-2013	14259735	9.50	28	3160907
7	October-2013	8713456	9.50	27	1862501
8	November-2013	3461222	9.50	26	712434
9	December-2013	4391111	9.75	25	891944
10	January-2014	7991044	9.75	24	1558253
11	February-2014	2244059	9.75	23	419358
12	March-2014	4721838	10.00	22	865670
13	April-2014	1183401	10.00	21	207095
14	May-2014	3210901	10.00	20	535150
15	June-2014	4727438	10.00	19	748511
16	July-2014	14493537	10.00	18	2174030
17	August-2014	16539966	10.00	17	2343161
18	September-2014	17936497	10.00	16	2391532
19	October-2014	10640013	10.00	15	1330001
20	November-2014	2827915	10.00	14	329923
21	December-2014	3639867	10.00	13	394319
22	January-2015	4114888	10.00	12	411488
23	February-2015	7271848	10.00	11	666586
24	March-2015	3792241	9.50	10	300219
25	April-2015	2153565	9.50	9	153441
26	May-2015	7123131	9.50	8	451131
27	June-2015	11653696	9.25	7	628814
28	July-2015	13665971	9.25	6	632051
29	August-2015	21238865	9.25	5	818581
30	September-2015	20344506	9.25	4	627288
31	October-2015	7856199	8.75	3	171854
32	November-2015	8054614	8.75	2	117463
33	December-2015	2006448	8.75	1	14630
34	January-2016	4873732	8.75	0	-
Total		250381312			28431881

* Rate of interest is 2 per cent above the Repo Rate during 2013-14, 2014-15 and 2015-16.

